

Catalogue of Chrysomelini Species (Coleoptera: Chrysomelidae: Chrysomelinae) from the New Leaf Beetles Collection of “Grigore Antipa” National Museum of Natural History (Bucharest) (Part III)

Sanda MAICAN^{1,*}, Rodica SERAFIM²

¹Institute of Biology Bucharest of Romanian Academy, 296 Splaiul Independenței, 060031 Bucharest, P.O. Box 56–53, Romania.

²“Grigore Antipa” National Museum of Natural History, 1 Kiseleff, 011341 Bucharest, Romania.

*corresponding author, e-mail: sanda.maican@ibiol.ro

Received: April 15, 2018; Accepted: June 12, 2018; Available online: June 25, 2018; Printed: June 30, 2018

Abstract. The paper presents data on the Palaearctic species of Chrysomelini tribe (Coleoptera: Chrysomelidae: Chrysomelinae) preserved in the new leaf beetles Collection of “Grigore Antipa” National Museum of Natural History (Bucharest). A total of 4,442 specimens, belonging to 21 species from eight genera of tribe Chrysomelini, are listed. Among the rare species in Romanian fauna, stored in this collection, *Chrysomela lapponica* Linnaeus, 1758, *Prasocuris junci* (Brahm, 1790) and *Chrysomela cuprea* Fabricius, 1775 should be mentioned.

Key words: Chrysomelidae, Chrysomelinae, Chrysomelini tribe, collection, “Grigore Antipa” National Museum of Natural History Bucharest.

INTRODUCTION

Subfamily Chrysomelinae (Coleoptera: Chrysomelidae) includes approximately 130 genera with about 3000 species and subspecies. Most of them are widely distributed in dried tropical and temperate areas of the world, but several species occur in Arctic tundra and sandy desert. Chrysomelinae taxa are classified in two tribes, Chrysomelini and Timarchini. The monotypic tribe Timarchini occurs in the Western Palearctic and Nearctic, whereas the Chrysomelini is widespread (Bouchard et al., 2011; Reid, 2014). According to the *Catalogue of Palaearctic Coleoptera* (Kippenberg, 2010), 23 species of eight genera of tribe Chrysomelini are reported in Romanian fauna.

The “Grigore Antipa” Museum included the Chrysomelini material in the Collection of Palaearctic Coleoptera (some of the data have been published) and in the Collection of Chrysomelidae, which was recently formed (since 2016). In the first two parts of the Catalogue of New Chrysomelidae Collection, data on 64 species of the Donaciinae (Donaciini, Haemoniini and Plateumarini tribes), Criocerinae, and Cassidinae (Cassidini and Hispini tribes) were published (Maican & Serafim, 2016, 2017).

MATERIAL AND METHODS

The new Chrysomelini collection, preserved in the new Chrysomelidae collection of the “Grigore Antipa” National Museum of Natural History, Bucharest, comprises:

- material that was not included in the Collection of Palaearctic Coleoptera, containing specimens from Deszö (Dénes) Kenderessy (1846–1881?), Edmund Reitter (1845–1920), Arnold Lucien Montandon (1852–1922), Friedrich Deubel (1845–1933), Richard Canisius (1872–1934), and Emil Váradi collections. The material from “Deszö Kenderessy” collection, an amateur entomologist, was collected at the end of the 19th century from Transylvania (Hațeg Depression, Hunedoara County). The “Arnold Lucien Montandon” collection consists in material collected at the end of the 19th century and the beginning of the 20th one from Romania: the royal estate of Broșteni, the Carpathian Mountains (Suceava County), Bârlad County, Comana Forest (Giurgiu County), Dobrogea region and France. A part of the material preserved in the “Fridrich Deubel” collection originates especially in the surroundings of Brașov. The specimens from the “Emil Váradi” collection were collected from Maramureș and Banat regions, and Harghita County in the first half of the 20th century. The old collection includes also specimens collected by Richard Canisius (painter of the “Grigore Antipa” Museum during 1907–1934).
- material collected by the team of specialists of the “Grigore Antipa” Museum and their collaborators during different research projects on the Romanian fauna (1951–2017);
- material from Dr. Nicolae Săvulescu collection which was included in the Museum patrimony in 1992, after his death;
- specimens donated by Igor Ceianu (1925–2000), Mihai Șerban Procheș, Viorel Ungureanu, Vladimir Brădescu, Victor Gheorghiu;
- material collected during the scientific expeditions organized by “Grigore Antipa” Museum in the surroundings of the Mediterranean basin: “Focida” 2006 (Turkey) and Sabka “2010” (Syria).

The paper presents the results of the study of the Chrysomelini material (subtribes Chrysomelina, Gastrophysina, Phratorina and Prasocurina) preserved in the new Chrysomelidae collection of the “Grigore Antipa” National Museum of Natural History, Bucharest.

A part of the material of Chrysomelidae was published by Negru & Roșca (1967), Negru (1968), Hoinic (1994), Maican & Serafim (2001, 2004, 2009, 2012), Maican (2006, 2007 a, b), Serafim & Maican (2004, 2008, 2011), Ungureanu et al. (2008), Stan et al. (2016).

The species identification was made by Atena Roșca¹, Igor Ceianu², Cristina Hoinic³, Sanda Maican, Rodica Serafim, and Ștefan Negru⁴.

The specimens were identified based on the keys of Warchałowski papers (2003, 2010).

¹Atena Roșca (1930–1976), worked at the Museum during 1954 to 1976.

²Igor Ceianu (1925–2000), Romanian specialist in the field of plant protection.

³Cristina Hoinic (1967–1997), worked at the museum during 1992 to 1997.

⁴Ștefan Negru (1923–1970), worked at the Museum during 1963 to 1970.

The stereomicroscope Zeiss Stemi 2000-C was used to identify the specimens, and photos were taken with a Canon EOS 5D Mark IV digital camera.

The systematics and nomenclature are in accordance with the *Catalogue of the Palaearctic Coleoptera* (Kippenberg, 2010).

For each recorded species, information on the collecting date and place (presented in chronological order), the number of the specimens, the name of the collectors and the host plants are provided.

Abbreviations:

coll. – collection; f.c. – forest chalet; Mt. (Mts) – Mountain/Mountains; m a.s.l. - meters above sea level; spec. (s) - specimen/specimens.

Names of the collectors:

A.V. – Adriana Văraru; A.L. – Alexandra Levardă; A.K. – Ana-Maria Krapal; A.P. – Angela Petrescu; A.L.M. – Arnold Lucien Montandon; A.R. – Atena Roșca; A.P.G. – Aurelian Popescu-Gorj; A.S. – Aurora Stănescu; C.P. – Corneliu Pârvu; C.A. – Costică Adam; C.B. – Cristina Ban (Calefariu); C.C. – Cristina Constantinescu; Ct.C. – Constantin Ciubuc; D.D. – Dan Dumitrescu; D.K. – Deszo (Denes) Kenderessy; D.L. – Dochîța Lupu; D.R. – Dorel Ruști; D.S. – Dragoș Scăunașu; D.M. – Dumitru Murariu; Du.S. – Dumitru Stan; Ed.R. – Edmund Reitter; E.I. – Elena Iorgu (Pisică); E.R. – Elena Rusu; E.V. – Emil Váradi; Fr.D. – Friedrich Deubel; G.A. – Gabriela Andrei; G.C. – Gabriel Chișamera; I.Ca. – Ioana Cacoveanu; I.C. – Ileana Cursaru; I.M. – Ioana Matache; I.C. – Igor Ceianu; I.S. – Igor Sienkiewicz; I.D. – Ion Drăghia; I.N. – Ioan Nemeș; I.L. – Iosif Lepși; I.Șt.I. – Ionuț Ștefan Iorgu; Iu. M. – Iuliana Medve; L.M. – Liviu Moscaliuc; L.O.P. – Luis Ovidiu Popa; M.V. – Maria Vasiliu; M.T. – Marilena Taloi; M.W. – Medeea Weinberg; M.S. – Melanya Stan; M.B. – Mihai Băcescu; M.S.P. – Mihai Șerban Procheș; Mi.S. – Mihai Stănescu; M.A. – Mircea Andrei; M.M. – M. Manoliu; M.St. – Mihail Stan; N.R. – Năstase Răduleț; N.G. – Nicolae Gâldean; N.S. – Nicolae Săvulescu; R.C. – Richard Canisius; R.S. – Rodica Serafim; R.Z. – Răzvan Zaharia; S.G. – Sorin Grigore; S. – Spătaru; Șt.N. – Ștefan Negru; V.A. – Vasile Andreescu; V.G. – Victor Gheorghiu; V.I.R. – Victoria Iuga Raica; V.B. – Vladimir Brădescu; Vi.G. – Viorel Gavril; V.U. – Viorel Ungureanu; X.S.P. – Xenia Scobiola Palade.

Abbreviations of the county names in Romania (Fig. 1):

AB – Alba; AG – Argeș; BC – Bacău; BN – Bistrița-Năsăud; BR – Brăila; BH – Bihor; BV – Brașov; BZ – Buzău; CS – Caraș Severin; CL – Călărași; CJ – Cluj; CT – Constanța; DB – Dâmbovița; DJ – Dolj; GL – Galați; GJ – Gorj; GR – Giurgiu; HD – Hunedoara; HR – Harghita; IS – Iași; IJ – Ilfov; IL – Ialomița; IS – Iași; MH – Mehedinți; MM – Maramureș; MS – Mureș; NT – Neamț; PH – Prahova; SB – Sibiu; SV – Suceava; TM – Timiș; VN – Vrancea; VS – Vaslui; VL – Vâlcea; AG – Argeș; DB – Dâmbovița; PH – Prahova; BR – Brăila; TL – Tulcea; CS – Caraș-Severin; GJ – Gorj; HD – Hunedoara; SB – Sibiu; BV – Brașov; CV – Covasna; VN – Vrancea; GL – Galați; MH – Mehedinți; DJ – Dolj; OT – Olt; TR – Teleorman; GR – Giurgiu; CL – Călărași; CT – Constanța; B – Municipiul București; IF – Ilfov.



Fig. 1 – The map of the Romanian counties (modified from <http://www.oradesibiu.ro>)

RESULTS

Based on the material examined so far, the new Chrysomelidae Collection of “Grigore Antipa” National Museum of Natural History from Bucharest includes 4,442 specimens, belonging to 21 species of eight genera of the Chrysomelini tribe, presented below.

Family Chrysomelidae Latreille, 1802
 Subfamily Chrysomelinae Latreille, 1802
 Tribe Chrysomelini Latreille, 1802
 Subtribe Chrysomelina Latreille, 1802
Chrysomela Linnaeus, 1758
Chrysomela collaris Linnaeus, 1758

Material: 2 specs, Hațeg (Hatzeg) (HD), without other data, coll. D.K.; 1 spec., Transylvania, without other data, coll. D.K.; 5 specs, Mireșu Mare (Nagynyires) (MM), coll. E.V.; 2 specs, Buhuși (BC), 30.V.1944, coll. I.C.; Cămpulung Moldovenesc (SV), 30.V.1949, coll. I.C. (2 specs), 31.VII.1963, coll. I.C. (3 specs); 1 spec., Gurghiu (MS), 12.VII.1952, coll. I.C.; 1 spec., Șimleu Silvaniei (SJ), 1.VIII.1957, X.S.P.; 2 specs, Borsec (HR), 18.VI.1960, coll. I.C.; 2 specs, Adjud (VN), 22.III.-19.VI.1961; 6 specs, Frasin (SV), 24.-25.VII.1962, coll. I.C.; 2 specs, Eșelnița Valley (MH), 3.VI.1968, X.S.P.; 6 specs, Slătioara Secular Forest (SV), V.1983, M.B.; 3 specs, Cămărzana (SM), 19.V.1987, R.S.; 10 specs, Strâmtura (MM), 3.VII.1995, C.P.; 1 spec., Cârțișoara, Vama Cucului (SB), 30.VII.1994, A.S.; 7 specs, Ieud (MM), 4-9.VII.1995, G.A., I.M.; 1 spec., Bârsana (MM), 5.VII.1995, C.P.; 8 specs, Repedea f.c. (MM), 29.VI.1997, A.S.; 1 spec., Smereceni clearing, 7 km towards the Repedea (MM), 22.VIII.1997, E.R.; 1 spec., Mara (MM), 26.VI.1998; 1 spec., Făina, Vaser Valley Forestry Railway (MM), 21.VII.2004, C.P. (Fig. 2).

Host plants: *Salix* sp. (Warchałowski, 2010).

Chrysomela cuprea Fabricius, 1775

Material: 1 spec., Buștenari, Telega (PH), without other data, coll. R.C.; 3 specs, București, without other data, coll. R.C.; 1 spec., Mireșu Mare (MM), coll. E.V.; 2 specs, Stănița (NT), 7.V.1966; 1 spec., Eșelnița Valley (MH), 17.VI.1970, A.R.; Putna Valley (SV), 3.-4.VIII.1971, coll. I.C. (2 specs), 26.V.1980, coll. I.C. (2 specs); 2 specs, Metalici (Metaliferi) Mts (HD), 2.VII.1980, G.A.; 1 spec., Strâmtura (MM), 3.VII.1995, C.P.; 1 spec., Vadu Izei (MM), 9.VII.1995, I.M. (Fig. 3).

Host plants: *Salix* sp. (Mohr, 1966).

Chrysomela lapponica Linnaeus, 1758

Material: 1 spec., Transylvania, without other data, coll. D.K. (Fig. 4).

Host plants: *Betula* sp., *Salix* sp., *Populus* sp. (Mohr, 1966).

Chrysomela populi Linnaeus, 1758

Material: 10 specs, Buștenari, Telega (PH), without other data, coll. R.C.; 5 specs, Turda (Thörenburg) (CJ), without other data, coll. R.C.; 2 specs, Grăușorul (MS), without other data, coll. R.C.; 1 spec., Mireșu Mare (Nagynyires) (MM), 1942, coll. E.V.; 1 spec., Băile Pucioasa, Sântimbru (Büdösfürdő) (HR), 1952, coll. E.V.; Pitești, 4.V.1953, N.S. (1 spec.); 8 specs, Pasărea forest, Brănești (IF), 7.IV.1946, X.S.P.; 1 spec., Budești (CL), 16.VI.1947, X.S.P.; 4 specs, Voinești (DB), 23.V.1950, X.S.P.; Pitești (AG), 2.IV.1950, N.S. (2 specs), 9.V.1959, N.S. (3 specs), 9.V.1961 (2

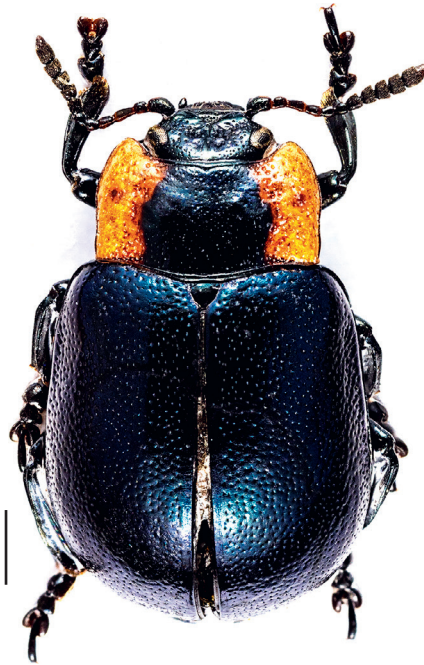


Fig. 2 – *Chrysomela collaris*. Scale bar 1 mm.



Fig. 3 – *Chrysomela cuprea*. Scale bar 1 mm.

specs), 24.IV.1970, N.S. (1 spec.); 1 spec., Băneasa forest (IF), 10.V.1952, N.S.; 2 specs, Braşov (BV), VII.1952, X.S.P.; 1 spec., Câmpulung Moldovenesc, Runc (SV), 24.V.1953, coll. I.C.; 2 specs, Vatra Dornei (SV), 30.VII.1953; 3 specs, Andronache forest, Bucureşti, 12.VI.1954, A.R.; 1 spec., Petroşani (HD), 25.VI.1954, V.I.R.; Comana forest (GR), 8-9.V.1958, N.S. (15 specs), 20.VIII.1970, A.R. (2 specs), 7.VI.2006, R.S. (3 specs); 4 specs, Jegălia (CL), 19.VI.-30.VII.1955, coll. I.C.; 1 spec., Breasta, Craiova (DJ), 21.VII.1956, X.S.P.; 1 spec., Şimleu Silvaniei (SJ), 29.VII.1956, X.S.P.; 4 specs, Târgovişte (DB), 23.VIII.1957, A.R.; 2 specs, Voineşti (DB), 23.VIII.1957, A.R.; Bucureşti, 18.VI.1958, A.R. (2 specs), 15.IV.1963, A.R. (1 spec.), 20.V.1980, M.T. (1 spec.); 1 spec., Suceava (SV), 12.V.1959, I.N.; 1 spec., Mogoşoaia forest (IF), 26.V.1959, X.S.P.; 1 spec., Căldăruşani (IF), 30.V.1959, A.R.; 1 spec., Cetate (DJ), 5.V.1960; 9 specs, Ciovârnaşani (MH), 24.VI.1961, N.S.; 1 spec., Dumbrava forest, Sibiu (SB), 29.VI.1961, A.P.G.; 1 spec., Pufeşti (VN), 4.V.1962; 1 spec., Rarău Mts, Eastern Carpathians (SV), 7.VII.1962; 3 specs, Bozovici (CS), 6.VII.1962, I.D.; Vidra (VN), 17-18.VII.1962, X.S.P., A.R. (4 specs), 19.VII.1963, A.R. (2 specs); 1 spec., Săcele (BV), 2.IX.1962, X.S.P.; 2 specs, Gârla Mare (MH), 24.IV.1964; 1 spec., Vaideeni (VL), 10.VI.1964, M.V.; Herculane Baths (Băile Herculane) (CS), 29.VII.1964, N.S. (3 specs), 23.VII.1965, N.S. (3 specs); 2.IX.1991, C.P. (1 spec.); 1 spec., Mraconia (MH), 23.V.1967, Şt.N.; 7 specs, Valea Lungă, Cricov (DB), 28.V.- 5.VII.1967, A.R.; 9 specs, Curtea de Argeş (AG), 21.VI.1967, V.A.; 5 specs, Gorgota (PH), 4.VII.1967-20.IV.1968, A.R., X.S.P.; 1 spec., Başta (NT), 16.IV.1968; 1 spec., Eşelniţa Valley (MH), 1.VI.1968, X.S.P.; 10 specs, Orşova (MH), 29.VI.1969- 18.VI.1970, Şt.N., A.R.; 9 specs, Eşelniţa (MH), 15-16.VI.1970, X.S.P., A.R.; 3 specs, Ogradena (MH), 21.VI.1970, A.R.; 1 spec., Şandru (BC), 8.VI.1971, M.W.; 1 spec., Dofteana (BC), 11.VI.1971, M.W.; 3 specs, Slănic Moldova (BC), 11.VI.1971; 1 spec., Moldova Nouă (CS), 22.V.1972, N.S.; 1 spec., Piatra Arsă, Bucegi Mts (PH), 22.VI.1972, M.W.; 2 specs, Crevedia Mare (GR0, 17.VIII.1976, M.A.; 1 spec., Predeal (BV), 31.VII.1977; 1 spec., Frunzaru forest, Sprâncenata (OT), 30.VIII.1980, G.A.; 1 spec., Buru, Trascău Mts (CJ), 30.IV.1980, M.A.; 4 specs, Sărata Monteoru (BZ), 19.VII.1981, V.B.; Gura Motrului (MH), 30.VII.1981, I.M. (1 spec.), 21-22.VI.1983, R.S., I.M. (9 specs); 1 spec., Strehaiia (MH), 17.V.1982, D.D.; 14 specs, Slătioara Secular Forest (SV), V.1983, M.B.; 12 specs, Argineşti forest, Gura Motrului (MH), 23.VI.1983, R.S., C.P.; 1 spec., Vânju Mare (MH), 15.VII.1983, I.M.; 164 specs, Foieni (SM), 14-15.VI.1985, R.S., I.M., C.P., N.G.; 2 specs, Livada (SM), 12.VI.1985, I.M.; 2 specs, Turulung Vii (SM), 13.VI.1985, R.S.; 6 specs, Moftin (SM0, 1.VII.1985, M.A.; 2 specs, Sâmbăta de Sus (SB), 4.VII.1985, N.G.; 1 spec., Poiana Neamţului (SB), 19.VII.1985, I.Ca.; 1 spec., Resighea (SM), 25.IV.1986, C.P.; 1 spec., Şelătruc f.c., Gutâi Mts (SM), 16.V.1986, R.S.; 1 spec., Măguri-Răcăţau (CJ), 21.IX.1986, M.M.; 2 specs, Cămârzana (SM), 19.V.1987, C.P.; 1 spec., Călineşti Oaş (SM), 21.V.1987, R.S.; 1 spec., Negureni, Valea Cişmelelor (CT), 18.V.1993, C.H.; 13 specs, Ieud (MM), 4.VII.-8.IX. 1995, P.C., G.A., I.M.; 2 specs, Ieud (MM), 4.VII.1995, I.M.; 8 specs, Slătioara f.c., Strâmtura (MM), 7.VII.-7.IX.1995, P.C., G.A., Mi.S., I.M.; 1 spec., Celic Dere Monastery (TL), 20.V.1997, C.P.; 1 spec., Colnic f.c., 2 km upstream from Mara, Deseşti (MM), 17.VII. 1998, A.V.; 1 spec., Nucet (DB), 19.X.1998, M.S.P.; 1 spec., Gârlişte (CS), 7.VII.2001, A.S.; 7 specs, Leordina (MM), 15.VI.2003, R.S., C.P.; 2 specs, Coşnea f.c., Poienile de sub Munte (MM), 16.VI.2003, C.P.; 1 spec., Repedea f.c., Repedea (MM), 18.VI.2003, R.S.; 2 specs, Baicu f.c., Dragomireşti (MM), 21.VI.2003, C.P., D.S.; 1 spec., Cetăţuia, Găujani (GR) (Danube River at kilometer 518), 26.IV.2004, M.S.; 2 specs, Pietroşani (Danube River at kilometer 519) (GR), 28.IV.2004, M.S.; 6 specs, 1 spec., the Cama

islet (the Danube River at kilometer 510) (GR), 29.IV.2004, M.S.; 9 specs, Penciu forest, Braniștea (Danube River at kilometer 480) (GR), 22.VI.2004, C.P.; 6 specs, Ochiul Boului Island (Danube River at kilometer 451) (GR), 23.VI.2004, D.M.; 1 spec., Măgura (BZ), 23.VI.2004, V.U.; 1 spec., Făina, Vaser Valley Forestry Railway (MM), 22.VII.2004, M.S.; 1 spec., Socolău forest, Poienile de sub Munte (MM), 23.VII.2004, C.B.; 1 spec., the confluence of the Tisza and Viseu rivers (MM), 24.VII.2004, R.S.; 2 specs, Sărata (SB), 27.VI.-2005-20.VIII.2008, C.B.; 10 specs, Crucea de Piatră (GR), 7.VI.2006, R.S.; 1 spec., Bârnova forest (IS), 26.V.2011, I.Șt.I.; 5 specs, Durău (NT), 1.VII.2011, I.Șt.I.; 19 specs, Gârla Mare (MH), 17.V.2015, G.C.; 1 spec., Sadu Valley (SB), 20.V.2015, C.C.; 1 spec., Sânpetru German (AR), 27.V.2015, E.I.; 2 specs, Șuvara Sașilor (SB), 27.VII.2015, C.C.; 1 spec., France, Besançon, without other data, coll. A.L.M.

Host plants: Salicaceae (*Populus alba*, *P. tremula*) (Warchałowski, 2010).

Chrysomela saliceti saliceti Weise, 1884

Material: 1 spec., Mireșu Mare (Nagynyires) (MM), 1942, coll. E.V.; 4 specs, Herculane Baths (Băile Herculane) (CS), without other data, coll. N.S.; 1 spec., without other data, coll. I.C.; 1 spec., Ardeluța, Tarcău (NT), 19.V.1949, coll. I.C.; 1 spec., Grienteș (NT), 20.V.1949, coll. I.C.; 1 spec., Pasărea forest (IF), 29.III.1951, N.S.; Jegălia (CL), 25.V.1955, coll. I.C. (2 specs), 19-24.VI.1955, coll. I.C. (3 specs), 14-30.VII.1955, coll. I.C. (3 specs); 2 specs, Șimleu Silvaniei (SJ), 30.VII.1957, X.S.P.; 1 spec., Târgu-Jiu (GJ), 2.VI.1959; 14 specs., Cetate (DJ), 5.V.1960; 3 specs, Pitești (AG), 9.V.1961, coll. N.S.; 5 specs, Ciutura (DJ), 15.VI.1963; 2 specs, Cărbunești (PH), 15.VII.1963; 1 spec., Craiova (DJ), 5.VI.1964, Șt.N.; 2 specs, Moșna (IS), 12.IX.1968; 1 spec., Orșova (MH), 29.VI.1969, Șt.N.; 1 spec., Eșelnița (MH), 29.III.1970, Șt.N.; 2 specs, Ogradena (MH), 21.VI.1970, A.R.; 1 spec., Slănic Moldova (BC), 7.VI.1971; 7 specs, Răstoaca (VN), 2.IX.1971, coll. N.S.; 1 spec., Sfântu-Gheorghe, Danube Delta (TL), 8.VII.1972; 1 spec., Văratec Monastery (NT), 12.VIII.1976, R.S.; 2 specs, Valley of Azuga River (PH), 1.VIII.1996, C.H.; 4 specs, Florești (GR), 24.V.1997, C.P.; 1 spec., Mara (MM), 26.VI.1998; 2 specs, the confluence of the Pop Ivan and Hututeanca rivers (MM), 18.VII.1994, G.C.; 1 spec., Lerești (AG), 19.VII.2003, Mi.S.; 1 spec., Izvorul Dulce, Beceni (BZ), 29.VII.2003, V.U.; 1 spec., Balauru Hill, Beceni (BZ), 15.VI.2004, V.U.; 2 specs, Făina, Vaser Valley (MM), 21.VII.2004, R.S.; 13 specs, Valley of the Socolău River, 2 km upstream of the confluence of the Socolău and Rica rivers (MM), 23.VII.2004, R.S.; 2 specs, Crucea de Piatră (GR), 7.VI.2006, R.S.

Host plants: Salicaceae (*Salix purpurea*, *S. viminalis*) (Warchałowski, 2010).

Chrysomela tremula tremula Fabricius, 1787

Material: 1 spec., without other data, coll. I.C.; 1 spec., Bucovăț (DJ), VIII.1951, X.S.P.; 1 spec., Jegălia (CL), 19.VI.1955, coll. I.C.; 1 spec., Tufa Valley, Sinaia (PH), 8.VII.1958, A.R.; 1 spec., Poiana Țapului (PH), 10.VII.1958, A.R.; 1 spec., Burdujeni forest (SV), 12.VI.1959, I.N.; 1 spec., Dumbrava forest (SB), 29.VI.1961, A.P.G.; 3 specs, Cumpătu, Sinaia (PH), 29.VI.1969, A.R.; 1 spec., Perchiu (BC), 12.VI.1971; 1 spec., Sinaia (PH), 19.VII.1972; 1 spec., Socolău forest, Poienile de sub Munte (MM), 19.07.2004, C.B.; 1 spec., Frumoasa Valley (SB), 6.VIII.2014, C.C.

Host plants: Salicaceae (*Populus alba*, *P. tremula*) (Warchałowski, 2010).

Chrysomela vigintipunctata vigintipunctata (Scopoli, 1763)

Material: 2 specs, Buștenari, Telega (PH), without other data, coll. R.C.; 2 specs, Mireșu Mare (Nagynyires) (MM), 1942, coll. E.V.; 1 spec., Tarcău (NT), 16.VI.1949, coll. I.C.; 2 specs, Pasărea forest (IF), 7.IV.1951, N.S.; 1 spec., Băile Pucioasa, Sântimbru (Büdösfürdő) (HR), 1952, coll. E.V.; 5 specs, București, V.1956; 1 spec., Tufa Valley, Sinaia (PH), 8.VII.1958; 1 spec., Gâdiniș (NT), 2.VII.1962, coll. I.C.; 1 spec., Periprava, Danube Delta (TL), 11.VII.1962, M.W.; 1 spec., Stănița (NT), 7.V.1966, coll. I.C.; 1 spec., Cheile Turzii (CJ), 4.VI.1966, D.L.; 1 spec., Slătioara Secular Forest (SV), 18.V.1969, M.B.; 1 spec., Strehaia (MH), 10.VI.1982, R.S.; 1 spec., Cămărzana (SM), 19.V.1987, R.S.; 3 specs, Tinosu forest (PH), 10.VI.1987, V.G.; 1 spec., Plopiș Mts, Aleșd (BH), 25.VI.1994, A.S.; 1 spec., Strâmtura, Slătioara River (Berșotă rivulet) (MM), 3.VII.1995, C.P.; 1 spec., Izvorul lui Dragoș, Moisei (MM), 13.VII.1996, C.P.; 1 spec., Florești (GR), 24.V.1997, C.P.; 2 specs, Valley of Frumușeaua River, 7 km upstream Crasna Vișeului (MM), 23-25.VI.1997, R.S., A.S.; 2 specs, Repedea f.c., Repedea (MM), 23-26.VI.1997, I.M., C.P.; 2 specs, Mara (MM), 26.VI.1998; 1 spec., Bârsa Tâmașului, The National Park “Piatra Craiului” (BV), 9.VI.2002, C.P.; 2 specs, Pietroșani, (the Danube River at kilometer 521) (GR), 28.IV.2004, M.S.; 1 spec., the islet Cama (the Danube River at kilometer 510) (GR), 29.IV.2004, M.S.; 10 specs, Onceoiaia Valley, Sătic, The National Park “Piatra Craiului” (AG), 23.V.2004, R.S.; 25 specs, Bârsa Valley, 2 km downstream Plaiul Foi, The National Park “Piatra Craiului” (BV), 24.V.2004, R.S., C.B.; 2 specs, the Elena Islet (the Danube River at kilometer 474), Gostinu (GR), 22.VI.2004, C.P.; 6 specs, Penciu forest (GR), 22.VI.2004, C.P.; 1 spec., “Gurile Argeșului” (Argeș River flows into the Danube at Oltenița) (CL), 23.VI.2004, C.P.; 1 spec., Dâmbovicioara Gorges, The National Park “Piatra Craiului” (AG), 21.VI.2005, R.S.; 6 specs, Frășinet, Valea Ierii (CJ), 19.VI.2012, M.S.; Sadu Valley (SB), 20.V.2015, C.C., L.M. (6 specs), 17.VI.2015, Mi.S. (1 spec.); 2 specs, Dobra Valley (SB), 3.VI.2015, C.A., G.C.; 7 specs, Podeni (MH), 10.VI.2015, G.C.; 2 specs, Micăsasa (SB), 18-19.VI.2017, C.C., Vi.G.; 1 spec., Serbia, Lazareva River canyon, Kučaj Mts, 1.VI.1996, V.G.

Host plants: Salicaceae (*Salix* sp.) (Warchałowski, 2010).

Plagioderia Chevrolat, 1836*Plagioderia versicolora* (Laicharting, 1781)

Material: 1 spec., Mogoșoaia forest (IF), 26.V.1959, A.R.; 1 spec., Chilia Veche, Danube Delta (TL), 7.V.1964, X.S.P.; 28.V.1967, A.R.; 2 specs, Gorgota (PH), 4.VII.1967, A.R.; 2 specs, Valea Lungă, Cricov (DB), 5.VII.1967, A.R.; 6 specs, Eșelnița (MH), 11.VIII.1969-16.VI.1970, X.S.P., A.R.; 1 spec., Ogradena (MH), 12.VIII.1969, X.S.P.; 7 specs, 21.VI.1970, A.R.; 13 specs, Orșova (MH), 1.X.1969-18.VI.1970, A.R.; 2 specs, Snagov forest (IF), 12.X.1979, R.S.; 1 spec., Nanov forest (TR), 13.V.1980, R.S.; 1 spec., Metalici Mts (HR), 2.VII.1980, G.A.; 48 specs, Afumați (IF), 9.IV.1981, C.P.; 41 specs, Dunavățu (TL), 31.V.-9.VI.1994, C.H.; 2 specs, Plopiș Mts, Aleșd (BH), 25.VI.1994, A.S.; 3 specs, Strâmtura (MM), 3.VII.1995, C.P.; 3 specs, Ieud (MM), 4.VII.1995, C.P.; 6 specs, Ieud (“Păcuri”), 8.VII.1995, leg. G.A.; 4 specs, Bârsana (MM), 5.VII.1995, C.P.; 4 specs, Vadu Izei (MM), 9.VII.1995, I.M.; 1 spec., Celic Dere Monastery (TL), 24.V.1997, R.S.; 4 specs, Valley of the Budac River, Simionești (BN), 28.VI.1997, D.R.; 1 spec., Săcel (MM), VI.1998; 2 specs, Tătaru dam, Mara River, Ona Șugatag (MM), 16-19.VII.1998, M.S.P.; 5 specs, Mara (MM), 21.VII.1998, I.M.; 1 spec., Izvoru Dulce, Beceni (BZ), 7.VII.2002, V.U.; 13 specs, Leordina (MM), 15.VI.2003, C.P., Mi.S.; 1 spec., Coșnea f.c., Poienile de sub Munte (MM), 16.VI.2003, C.P.; 1 spec.,

Repedea f.c., Repedea (MM), 18.VI.2003, C.P.; 1 spec., Copănița island (Danube River at kilometer 696) (DJ), 17.V.2004, C.P.; 1 spec., Măgura (BZ), 23.VI.2004, V.U.; 1 spec., Făina, Vaser Valley (MM), 21.VII.2004; 3 specs, Valley of the Socolău River, 2 km upstream of the confluence of the Socolău and Rica rivers (MM), 19-23.VII.2004, R.S., C.B.; 15 specs, the confluence of the Vișeu and Tisa rivers (MM), 24.VII.2004, R.S.; 2 specs, Făgăraș Mts, Valley of Buda River (AG), 4.VIII.2004, R.S.; 1 spec., Germany, Burgberg im Allgäu, Bavaria (whitout other data).

Host plants: Salicaceae (*Salix* sp., *Populus* sp.) (Warchałowski, 2010).

Plagiosterna Motschulsky, 1860

Plagiosterna aenea aenea (Linnaeus, 1758)

Material: 1 spec., Ardeluța, Tarcău (NT), 24.V.1949, coll. I.C.; 1 spec., Grintieș (NT), 30.V.1949, coll. I.C.; 1 spec., Sibișel (Beriu) (HD), VI.1950, I.L.; 1 spec., Agigea (CT), 31.VII.1957, X.S.P.; 1 spec., Broșteni (SV), V.1958, coll. I.C.; 1 spec., Tufa Valley, Sinaia (PH), 8.VII.1958, A.R.; 1 spec., Barnar, Crucea f.c., Bistrița Mts. (SV), 1.VIII.1958, coll. I.C.; 1 spec., Gemenea, Voinești (DB), 19.V.1961, A.R.; Rarău Mts, Eastern Carpathians (SV), VII.1962 (1 spec.), 10.VI.1992, I.C. (2 specs); 3 specs, Bălătău (Tarnița) Lake, Nemira Mts, Sălătruc (BC), 4-8.VII.1965 (2 specs), 10.VI.1971 (1 spec.); Lerești (AG), 12.V.1966, I.D. (4 specs), 20.VII.2003, M.S. (7 specs); 1 spec., Padiș, Bihor Mts (BH), 1.VII.1978, G.A.; 1 spec., Călugăreni (GR), 6.VII.1978; Poiana Neamțului (SB), 16.VII.-19.VIII.1985, R.S., I.M., I.D. (58 specs), 15.V.1996, I.D. (8 specs); 9 specs, Turnu Roșu (SB), 13.V.1986, I.D.; 3 specs, Covasna (CV), 20-24.VI.1987, V.B.; 5 specs, Valea Glodului, Leaota Mts, 4.V.1990, N.R.; 1 spec., Dâmbovicioara Gorges, 15.V.1990, G.A.; 2 specs, Comandău (CV), 11-27.VI.1992, I.C.; 1 spec., Canaraua Fetii (CT), 20.V.1993, C.P.; 3 specs, Cârțișoara, Vama Cucului (SB), 30.VII.1994, A.S.; 1 spec., Sinaia, Cumpătu (PH), 27.V.1994, coll. I.C.; 1 spec., Caraiman chalet, Bucegi Mts (PH), 11.VI.1995, D.M.; Piatra Craiului Mts, Sătic, Valley of Dâmbovița River (AG), 22.VI.1995, L.O.P. (3 specs), 22.VI.2005, M.S., C.B., I.M., E.I., M.St. (41 specs); 1 spec., Strâmtura (MM), 3.VII.1995, C.P.; 19 specs, Strâmtura, Slătioara River, Berșotă stream (MM), 3.VII.1995, C.P., I.M.; 17 specs, Bârsana (MM), 5.VII.1995, C.P.; 5 specs, Izvorul Izei (MM), 6.VII.1995, C.P.; 4 specs, Slătioara f.c., Strâmtura (MM), 12.VII.-7.IX.1995, G.A., I.M.; 1 spec., Moisei, Izvorul lui Dragoș f.c. (MM), 13.VII.1995, C.P.; 1 spec., Săpânța, Nireș stream, Șipote cascade (MM), 16.V. 1996, Mi.S.; 3 specs, Valley of Săpânța River, upstream Săpânța (MM), 18.V.1996, Mi.S., D.R.; 5 specs, Valley of Săpânțioara River, Igniș plateau (MM), 20.V.1996, D.R., Mi.S.; 1 spec., Călinești, Săcătura f.c. (MM), 7.VII.1996, I.M.; 38 specs, Smereceni clearing, 7 km upstream Repedea (MM), 22-27.VI.1997, R.S., I.M.; 40 specs, Repedea, Repedea f.c. (MM), 22-29.VI.1997, R.S., I.M., A.S., C.P.; 11 specs, Valley of Frumușeaua River, 7 km upstream Crasna Vișeuului (MM), 29.VIII.1997, A.S., R.S.; 1 spec., Izvorul Albastru al Izei (MM), 17.VI.1998; 1 spec., Runcu dam, upstream Tătaru Gorges (MM), 17.VI.1998; 2 specs, Colnic f.c., 2 km upstream Mara, Desești (MM), 17.VII.1998, I.M.; 2 specs, Valley of Mara River, 2 km upstream Mara, Desești, 18.VII. 1998, I.M.; 1 spec., 1 km upstream Mara (MM), 21.VII.1998, I.M.; 7 specs, Valley of Runcu River, Stedea f.c., Desești (MM), 29.VII. 1998, M.S.P.; 1 spec., Jepii Mici, Bucegi Mts, Bușteni (PH), 9.VIII.1998, M.S.P.; 2 specs, Tismana (GJ), 29.VII.1999, G.A.; 29 specs, Piatra Craiului Mts, Bârsa Groșetului, 4 km upstream Plaiul Foiie chalet (BV), 9.VI.2000, C.P.; 7 specs, Piatra Craiului Mts, Valley of Diana rivulet, 10.VI.2000, C.P.; 1 spec., Piatra Craiului Mts, Bârsa Valley (AG), 4.VII.2000, L.O.P.; 2 specs, Piatra Craiului Mts, Scorobia Valley (AG), 5.VII.2000, L.O.P., A.V.;

Piatra Craiului Mts, Gura Bârsei (BV), 10.VI.2000, C.P. (2 specs), 14.VI.2001, C.P. (30 specs), 1-2.VII.2002, C.P. (93 specs); 2 specs, Piatra Craiului Mts, Sătic, Scorobia Valley (AG), 5.VII.2000, A.S.; 11 specs, Piatra Craiului Mts, "Valea Scheilor" chalet (AG), 5.VII.2000, A.S.; Piatra Craiului Mts, Zăpodia Valley, Sătic (AG), 5.VII.2000, C.P. (1 spec.), 28.VI.2002, C.P. (4 specs); 10 specs, Piatra Craiului Mts, Sătic, Speriata Valley (AG), 6.VII.2000, A.S., C.P.; 15 specs, Piatra Craiului Mts, Dragoslăveni Valley, 8.VII.2000, C.P., A.V.; Piatra Craiului Mts, Valley of the Bârsa Fierului River (BV), 12.V.2001, C.P. (4 specs), 24.V.2004, R.S., C.B., C.P. (11 specs); 1 spec., Nera Gorges, Lindeni clearing (CS), 15.V.2002, M.S.; 1 spec., Piatra Craiului Mts, Valea lui Ivan, 27.VI.2002, C.P.; 66 specs, Piatra Craiului Mts, Berila Valley, Sătic (AG), 30.VI.2002, C.P.; Piatra Craiului Mts, Oncioaia Valley, Sătic (AG), 30.VI.2002, R.S. (47 specs), 3.VII.2002, C.P. (2 specs), 22-23.V.2004, R.S., C.P. (93 specs); 3 specs, Poienile de sub Munte, 500 m downstream the confluence of the rivers Rica and Budescu (MM), 14.VI.2003, C.P., R.S.; Făina, Valley of Vaser River (MM), 19.VI.2003, R.S., M.S., C.P. (83 specs), 21.VII.2004, M.S., C.P. (4 specs); 2 specs, Țibleș Mts, Lunca lui Cosiță, 4 km upstream Baicu f.c., Dragomirești (MM), 22.VI.2003, C.P.; 34 specs, Piatra Craiului Mts, Măgura (BV), 21.V.2004, R.S., C.P., C.B.; 120 specs, Piatra Craiului Mts, Valley of the Bârsa Mare River, 2 km downstream of Plaiul Foi chalet (BV), 24.V.2004, R.S., C.B.; 6 specs, Bucegi Mts, Predeal (BV), 5.VII.2004, V.U.; 3 specs, Bucegi Mts, Sinaia, Furnica Peak (PH), 7.VII.2004, V.U.; 3 specs, the confluence of the Pop Ivan and Hututeanca rivers (MM), 18.VII.2004, G.C., C.B.; 2 specs, Valley of Socolău River, Poienile de sub Munte (MM), 19.VII.2004, G.C.; 2 specs, Maramureș Mts, Făina, Valley of Vaser River (MM), 21.VII.2004, R.S.; 29 specs, Maramureș Mts, Valley of Făina River (MM), 22.VII.2004, R.S., M.S.; 1 spec., Maramureș Mts, Valley of Vaser River (MM), 22.VII.2004, C.P.; 4 specs, Valley of the Vaser River, Făina-Bardău transect (MM), 22.VII.2004, C.B.; 5 specs, the confluence of the Vișeu and Tisa rivers (MM), 24.VII.2004, R.S., C.P.; 1 spec., Poienile de sub Munte (MM), 25.VII.2004, R.S.; 58 specs, Făgăraș Mts, Valley of Buda River (AG), 4.VIII.2004, R.S., M.S., A.P.; 75 specs, Făgăraș Mts, Vidraru Lake, 5 km away from Cumpăna chalet (AG), 4.VIII.2004, R.S.; 17 specs, Făgăraș Mts, Valley of Otic River (AG), 4.VIII.2004, R.S.; 146 specs, Făgăraș Mts, Vidraru Lake, "Valea cu Pești" chalet (AG), 6.VIII.2004, M.S., R.S.; 43 specs, Făgăraș Mts, Vidraru Lake, Stan Valley (AG), 7.VIII.2004, R.S.; 13 specs, Făgăraș Mts, Vidraru Lake, Moliviș (AG), 7.VIII.2004, M.S.; 16 specs, Făgăraș Mts, Vidraru Lake, Curmătura Valley (AG), 8.VIII.2004, R.S.; 17 specs, Făgăraș Mts, Vidraru Lake, Cumpăna – Clăbucet Mt. route (AG), 8.VIII.2004, M.S.; 6 specs, Piatra Craiului Mts, Dâmbovicioara Gorges (AG), 9.VIII.2004, M.S.; 4 specs, Pasărea forest (IF), 5.VI.2005, C.P.; 22 specs, Piatra Craiului Mts, Sătic (AG), 22.VI.2005, R.S., M.S., E.I.; 1 spec., Sărata (SB), 4.V.2007, C.B.; 2 specs, the Natural Reserve Tișița Gorges (Cheile Tișiței), Vrancea Mts (VN), 21.V.2013, M.S.; Putna – Vrancea Natural Park, Lepșa (VN), 21.V.2013, M.S. (3 specs), 31.V.2015, A.K., A.L. (2 specs); 7 specs, Putna – Vrancea Natural Park, Valley of Băhneanu rivulet (VN), 29.VI.2013, C.C.; 3 specs, Putna – Vrancea Natural Park, Soveja, Valley of Cremeneț River (VN), 19.V.2014, C.C.; Voineasa, Jidoaia Valley (VL), 21.V.2014, E.I. (1 spec.), 4.IX.2014, C.C. (1 spec.), 21.V.2015, M.S., L.M. (2 specs); Lotrioara Valley (SB), 1-4.VII.2014, C.C., E.I. (38 specs), 5-17.VIII.2014, C.C. (4 specs); 3 specs, Tălmăcel, Râușor Valley (SB), 1-2.VII.2014, C.C.; 2 specs, Valley of Sebeș River (between Oașa Lake and Șugag) (AB), 11.VII.2014, C.C.; 7 specs, Sadu – Râu Sadului, Sadu Valley (SB), 20.V.2015, Mi.S., C.C., L.M.; spec., Postăvaru, Poiana Brașov (BV), 13.V.2015, M.S.; 3 specs, Sădurel Valley (SB), 20.V.2015, Mi.S., E.I.; 4 specs, Putna – Vrancea

Natural Park, Valley of Strâmba stream (VN), 30.V.2014, A.K.; 5 specs, Sadu Valley (SB), 20.V.2015, M.S.; 2 specs, Voineșița Valley (VL), 21.V.2015, Mi.S., E.I.; 4 specs, Dobra Valley (AB), 3.VI.2015, C.A.; 4 specs, Tău Bistra (AB), 19.VI.2015, C.C.; 14 specs, Retezat National Park, The Gemenea Scientific Reserve (HD), 3.VII.2015, C.A., G.C.; 1 spec., Brăduleț, Vâlsan Valley (AG), 29.VII.2015, M.S.; 3 specs, Paltin Valley (SB), 3.VIII.2015, M.S.; 1 spec., Crasna Monastery (PH), 14.V.2016, Du.S.

Host plants: Betulaceae (*Alnus* sp.) (Mohr, 1966).

Subtribe Gastrophysina Kippenberg, 2010

Gastrophysa Chevrolat, 1836

Gastrophysa (s.str.) *polygoni polygoni* (Linnaeus, 1758)

Material: 1 spec., Măcin (TL), without other data, coll. A.L.M.; Mireșu Mare (Nagynyires) (MM), 1940 (1 spec.), 1941 (3 specs), 1942 (2 specs), coll. E.V.; 1 spec., Hanu Conachi (GL), VII.1950, coll. I.C.; 2 specs, Câmpulung Moldovenesc (SV), 19.IV.1951 - 7.V.1952, coll. I.C.; Pasărea forest (IF), 8-28.IV.1951, N.S. (2 specs), 19.VI.1965, A.R. (1 spec.); Comana forest (GR), 5.V.1951, N.S. (1 spec.), 22-23.VII.1963, Șt.N. (2 specs), 18.IX.1964, A.R. (3 specs); București, 8.IV.1954, X.S.P. (1 spec.), 3.IV.1963, A.R. (1 spec.), 8-23.IV.1971, Ct.C. (5 specs), 6.VI.1971, A.R. (1 spec.); 4 specs, Negoiești (DJ), 25.IV.1954; 7 specs, Armășești (IL), 27.IV.1954; 2 specs, Rădulești (Brazi) (IL), 27.VI.1954; 1 spec., Agigea (CT), 21.VIII.1954; 2 specs, Căldărușani forest (IF), 9.VII.1955; 5 specs, Dăbuleni (DJ), 10.V.1956; 1 spec., Oltina (CT), 26.VI.1956, N.S.; 2 specs, Țigănești (Ciolpani) (IF), 4.V.1957, X.S.P.; 1 spec., Copăceni (IF), 17.VI.1958, A.R.; 2 specs, Scheia forest (SV), 8-12.V.1959, I.N.; 3 specs, Podari (DJ), 5.VI.1960, Șt.N.; Periprava, Danube Delta (TL), 12.VII.1962, M.W. (1 spec.), 2.VII.1963, X.S.P. (1 spec.), 9.V.1964, X.S.P. (4 specs), 26.IV.1966, Șt.N. (1 spec.), 16.VII.1966, X.S.P. (2 specs), 15.X.1966, Șt.N. (13 specs); 1 spec., Târnava forest (SB), 5.VI.1963; 1 spec., Tulcea (TL), 22.VI.1963, X.S.P.; Chilia Veche, Danube Delta (TL), 7.V.1964, M.W., I.S. (4 specs), 15.IV.1966, Șt.N. (1 spec.); Andronache forest, București, 29.IV.1965, A.R. (1 spec.), 20.XI.1966, A.R. (1 spec.); 1 spec., Sinaia (Cumpătu), 22.V.1965, Șt.N.; Hagieni forest (CT), 7.VI.1965, Șt.N. (26 specs), 21.VII.1997, C.P. (2 specs); 1 spec., C.A. Rosetti, Danube Delta (TL), 6.X.1965, X.S.P.; 2 specs, Voinești (DB), 8.VIII.1966, X.S.P.; 3 specs, Nanov (TR), 2.X.1966, X.S.P.; Eșelnița (MH), 8.VI.1967, I.D. (1 spec.), 13-25.VIII.1969, X.S.P. (5 specs), 15-19.VI.1970, X.S.P. (12 specs); 2 specs, Cazanele Dunării (Danube Boilers) (MH), 10.VI.1967, Șt.N.; 1 spec., Niculițel (TL), 27.VI.1967, M.V.; 4 specs, Fundulea (IF), 29.VI.1967, A.R.; 2 specs, Codru Istria (BZ), 14.IX.1967, X.S.P.; Caraorman, Danube Delta (TL), 5.X.1968, Șt.N. (1 spec.), 4.VIII.2006, E.I. (1 spec.); Orșova (MH), 28.X.1968, Șt.N. (1 spec.), 18.VI.1970, A.R. (5 specs); 4 specs, Ogradena (MH), 21.VI.1970, A.R.; 1 spec., Tușnad Baths (Băile Tușnad) (HR), 7.VIII.1970, X.S.P.; 1 spec., Bârlad (VS), 19.IX.1972, A.R.; Băneasa forest (București), 13.VII.1973, A.R. (1 spec.), 10.VII.2006, E.I. (1 spec.); 1 spec., Cocoș Monastery (TL), 2.IX.1973, M.W.; 1 spec. Prundu (GR), 28.IV.1977, R.S.; 3 specs, Zăvestreni forest (TR), 1.IX.1977, R.S.; 1 spec., Căscioarele forest, Dealu (IF), 7.VI.1979, R.S.; 6 specs, Dumitrana (IF), 3.VIII.1979, R.S.; 3 specs, Snagov forest (IF), 12.X.1979, R.S.; 2 specs, Poieni (TR), 20.VIII.1980, I.M.; 2 specs, Bistreț (DJ), 25.VI.1981, R.S.; 1 spec., Târnava (DJ), 21.VI.1982, R.S.; 2 specs, Foieni (SM), 14.VI.1985-24.IV.1986, C.P.; 1 spec., Cărășeu (SM), 29.VII.1985, I.D.; 9 specs, Sihlea (VN), 23.VI.1987, I.M., C.P.; 8 specs, Spătaru forest, Costești (BZ), 24.VI.1987, C.P., I.M.; 1 spec., Giulești (IF), 8.VII.1991; 4 specs, Maliuc, Mila 26 (TL), 8.VIII.1991, I.M.; 8 specs, Canaraua Fetii (CT), 20.V.1993 - 21.VI.1995, C.P.; 1 spec., Gârliște (CS),

VI.1994, coll. I.C.; 2 specs, Plopiș Mts, Aleșd (BH), 25.VI.1994, A.S.; 1 spec., Celic Dere Monastery (TL), 24.V.1997, C.P.; 1 spec., Piatra Craiului Mts, Gura Bârsei (BV), 4.VII.2000, C.P.; 1 spec., Furnica Peak, Bucegi Mts (PH), 23.VI.2001, V.U.; 1 spec., The Muddy Volcanoes (Vulcanii Noroiși), Pâcelele Mari (BZ), 18.IV.2002, V.U.; 1 spec., Izvoru Dulce, Beceni (BZ), 1.VI.2002, V.U.; 1 spec., Bârsa Tămașului, Piatra Craiului Mts, 9.VI.2002, C.P.; 1 spec., Valley of the Cvașnița River, Poienile de sub Munte (MM), 15.VI.2003, C.P.; 1 spec., Valley of the Pop Ivan River, 12 km upstream Crasna Vișeului (MM), 17.VI.2003, M.S.; 1 spec., the Natural Reserve “Marine Sand Dunes of Agigea” (CT), 17.VII.2003, A.P.; 1 spec., Cetățuia, Găujani (GR), (Danube River at kilometer 516), 26.IV.2004, M.S.; 1 spec., the Cama islet (the Danube River at kilometer 510) (GR), 29.IV.2004, M.S.; 1 spec., Lung islet (Ostrovul Lung) (the Danube River at kilometer km 470) (GR), 22.VI.2004, C.P.; 4 specs, Penciu forest, Braniștea (Danube River at kilometer 480) (GR), 23.VI.2004, M.S.; 2 specs, the Danube River at kilometer km 465 (GR), 24.VI.2004, C.P.; 1 spec., the confluence of the Pop Ivan and Hututeanca rivers (MM), 18.VII.2004, C.P.; 1 spec., Balauru Hill, West to Izvorul Dulce, Beceni (BZ), 4.V.2005, V.U.; 1 spec., Manafu forest, Izvoarele (GR), 22.VI.2006, R.S.; 13 specs, Moara Domnească (IF), 12.VI.2006, M.S.; 70 specs, Valea Gurbanului, Comana (GR), 11.VIII.2009, R.S., Iu.M.; 1 spec., Călimani National Park (SV), 20.VII.2012, I.Șt.I.; 11 specs, Turkey, Denizli Province, Koruçuk (“Focida” expedition), 3.08.2006, R.Z., S.G.; 4 specs, Turkey, Denizli Province, Buharkent (“Focida” expedition), 4.08.2006, C.P.; 1 spec., Syria, Al Assad Lake, 3.V.2010, V.G. (“Sabka” expedition).

Host plants: Polygonaceae (*Rumex* sp., *Polygonum* sp.) (Mohr, 1966).

Gastrophysa viridula viridula (De Geer, 1775)

Material: 1 spec., Transylvania, without other data, coll. D.K.; 2 specs, Comana forest (GR), 5.V.1951, N.S.; 3 specs, Lucina, Obcinele Bucovinei (SV), 3.VI.1951, coll. I.C.; 2 specs, Tecuci (GL), 5.VI.1954, N.S.; 16 specs, Beliș (CJ), 29.VII.1960, coll. I.C.; 1 spec., Beliș, Giurcuța de Sus, (CJ), 30.VII.1960, coll. I.C.; 1 spec., Călimani Mts., 1500-1700 m a.s.l., 25.V.1963, coll. I.C.; 145 specs, Sinaia, Bucegi Mts (PH), 1,330 m a.s.l., 28-30.V.1964, I.D., A.R.; 152 specs, Poiana Stâinii, Bucegi Mts (PH), 28.VI.1969, I.D.; 2 specs, Plopiș, Șișești (MM), 27.VI.1980, G.A.; 12 specs, Apuseni Mts, Onu Valley (?), 30.VI.1980; 4 specs, Diham chalet, Bucegi Mts (PH), 19.VII.1984, R.S.; 4 specs, Turulung VII (SM), 13.VI.1985, R.S.; 9 specs, Avrig (SB), 16.VII.1985, R.S., I.M.; Poiana Neamțului (SB), 17-20.VII.1985, R.S., I.Ca, I.M. (8 specs), 14 – 15.V.1986, I.M., I.D. (69 specs); 12 specs, Cărășeu (SM), 20-30.VII.1985, I.D., V.G.; 5 specs, Călinești Oaș (SM), 31.VII.1985, C.P.; 36 specs, Sebeșu de Sus (SB), 12.V.1986, I.M.; 9 specs, Turnu Roșu (SB), 13.V.1986, I.M.; 7 specs, Șelătruc chalet, Gutâi Mts (SM), 15-16.V.1986, R.S., I.C.; Plaiul Foi, Piatra Craiului Mts (BV), 25-27.IV.1990, R.S. (5 specs), 28.V.-1.VI.1990, R.S. (27 specs), 12.VII.1990, I.M. (3 specs); Bârsa Groșetului, 4 km upstream Plaiul Foi, Piatra Craiului Mts (BV), 13.V.1990 (3 specs), 9.VI.2000 C.P. (15 specs); 3 specs, Valley of Șpirala River, Piatra Craiului Mts (BV), 30.V.1990, N.G.; 15 specs, Măgura Răcătău (CJ), 4.VI.1992, N.G.; 1 spec., Sohodol Gorges, Runcu (GJ), 20.VI.1992, R.S.; 8 specs., Trăisteni, valley of Doftana River (PH), 22-28.VI.1994, A.P.; 1 spec., Cârțișoara, Vama Cucului (SB), 30.VII.1994, C.H.; Bârsana (MM), 5.VII.1995, I.M., C.P. (3 specs), 21.VII.1997, C.P. (8 specs); 17 specs Pietrosu Mt. (National Park “Pietrosu Rodnei”, 800-1,300 m a.s.l. (MM), 11-12.VII. 1995, M.I., A.S.; National Park “Pietrosu Rodnei”, Laboratory house, 1,370 m, Rodna Mts (MM), 11-13.VII.1995, P.C. (26 specs), 12.IX.1996, C.P., (20 specs); Moisei, Izvorul

lui Dragoș f.c. (MM), 13.VII. 1995, A.S. (4 specs), 21.VII. 1997, R.E. (4 specs); 1 spec., Strâmtura, Slătioara River, Berșotă stream (MM), 7.IX.1995, C.P.; 1 spec. Ieud (MM), 8.IX.1995, C.P.; 9 specs, Izvorul Izei (MM), 9.IX. 1995, C.P.; 32 specs, Săpânța, Colibi f.c. (MM), 12.VI.1996, I.M.; 1 spec., Valley of Azuga River (PH), 31.VII.1996; 21 specs, Predeal (BV), 3.V.1997, D.M.; 2 specs Smereceni clearing, 7 km upstream Repedeș (MM), 22-25.VI.1997, I.M., C.P.; 96 specs, Cârlișura valley, 17 km upstream Repedeș (MM), 27.VI.1997, M.I., A.S.; 2 specs, Simionești, Valley of Budaș River (BN), 28.VI.1997, D.R.; 1 spec. Bălăsăna Valley, 4 km upstream Baia Borșa (MM), 21.VIII.1997, E.R.; 1 spec. Valley of Frumușeaua River, Crasna Vișeuului (MM), 29.VIII.1997, C.P.; 1 spec., Desești, 2 km upstream Mara, Colnic f.c. (MM), 17.VII.1998, I.M.; 7 specs, Cornești, left bank of the river Coșeu (MM), 19.VII.1998, V.A.; 1 spec., Izvoarele resort (MM), 23.VII. 1998, I.M.; 2 specs, Piscul cu Brazi Valley, Piatra Craiului Mts, 5.VII.2000, L.O.P.; 11 specs, Piatra Craiului Mts, "Valea Scheilor" chalet (AG), 5.VII.2000, A.S.; 9 specs, Piatra Craiului Mts, Dragoslăveni Valley, 8.VII.2000, C.P., A.V.; Gura Bârsei chalet, Piatra Craiului Mts (BV), 9.VI.2000, C.P. (3 specs), 14.VI.2001, C.P. (3 specs), 2.VII.2002, C.P. (1 spec.); 1 spec., Galeș (AG), 8.VII.2001, C.P.; 5 specs, Bârșă Tămașului, Piatra Craiului Mts (BV), 9.VI.2002, C.P.; 3 specs, Șpirala Valley, Piatra Craiului Mts (BV), 3.VII.2002, C.P.; 5 spec. Poienile de sub Munte, the confluence of the rivers Rica and Budescu (MM), 14.VI.2003, C.P.; 3 specs, Poienile de sub Munte, Coșnea f.c. (MM), 15-16.VI.2003, C.P.; 7 specs, Valley of the Pop Ivan River, 11 km upstream Crasna Vișeuului (MM), 17.VI.2003, C.P.; 2 specs, Repedeș f.c., Repedeș (MM), 18.VI.2003, C.P.; Făina, Valley of the Vaser River (MM), 19.VI.2003, C.P., R.S., M.S. (9 specs), 21.VII.2004, C.B. (1 spec.); 1 spec. Dragomirești, Valley of Baicu River (MM), 21.VI.2003, C.P.; 25 specs, Baicu f.c., Dragomirești, Țibleș Mts, (MM), 21-22.VI.2003, R.S., M.S., D.S.; 1 spec., Valley of the streamlet Pălcut, Dragomirești, Țibleș Mts (MM), 22.VI.2003, D.S.; 22 specs, Lunca lui Cosiță, 4 km upstream Baicu f.c., the confluence of the rivers Idișor and Baicu, Dragomirești (MM), 22.VI.2003, R.S.; 1 spec., Săliște, Valley of the streamlet Idișor, Țibleș Mts (MM), 23.VI.2003, D.S.; 43 specs, National Park Piatra Craiului Mts, Sățic, Onceoia Valley (AG), 23.V.2004, C.B., R.S.; 6 specs, National Park Piatra Craiului Mts, Bârșă Fierului Valley (BV), 24.V.2004, S.R.; 3 specs, Sărata (SB), 24.VI.2004, C.B.; 2 specs, the confluence of the Pop Ivan and Hututeanca rivers (MM), 18.VII.2004, R.S.; 6 specs, Valley of the Vaser River, Bardău-Cozia transect (MM), 22.VII.2004, C.P.; 3 specs, Valley of the Vaser River, Făina-Bardău transect (MM), 22.VII.2004, C.B.; 1 spec., Predeal, Bucegi Mts (BV), 9.VII.2004, V.U.; 1 spec., Pârâul Rece, Bucegi Mts (BV), 9.VII.2004, V.U.; 1 spec., the confluence of the rivers Vișeu and Tisa (MM), 24.VII.2004, C.P.; 18 specs, the Oticu River Valley, Făgăraș Mts, 4.VIII.2004, R.S.; 7 specs, Făgăraș Mts, Valley of Buda River (AG), 4.VIII.2004, R.S., A.P.; 1 spec., Făgăraș Mts, Vidraru Lake, "Valea cu Pești" chalet (AG), 6.VIII.2004, R.S.; 12 specs, Pasărea Lake (IF), 2.V.2006, C.P.; 1 spec., Preluca (MM), 12.VI.2007, C.P.; 1 spec., "Frumoasa" Valley (AB), 6.VIII.2014, C.C.; 21 specs, Sadu Valley (SB), 20.V.2015, C.C., Mi.S., E.I., L.M.; 6 specs, Piatra Mare Mts (BV), 26.VII.2015, Vi.G.; 1 spec., Dobra Valley (AB), 3.VI.2016, C.A.; 8 specs, Omu Peak (Omu Hut) - Cerbului Valley route, Bucegi Mts (PH), 7.VII.2016, Vi.G.; 8 specs, Ciungetu Mt., Călimani National Park (SV), 26.VII.2017, Vi.G.; 4 specs, Reșițiș Mt., Călimani National Park (SV), 27.VII.2017, Vi.G.

Host plants: Polygonaceae (*Rumex acetosella*, *R. obtusifolius*, *R. alpinus*, *Polygonum aviculare*, *P. amphibium*, *P. hydropiper*), Scrophulariaceae (*Linaria vulgaris*).

Subtribe Phratorina Motschulsky, 1860

Phratora Chevrolat, 1836*Phratora* (s. str.) *tibialis tibialis* (Suffrian, 1851)

Material: 279 specs, Bârsana (MM), 5.VII.1995, C.P., I.M.; 1 spec., Vadul Izei (MM), 9.VII.1995, I.M.; 9 specs, Nănești (MM), 10.VII.1995, I.M.; 2 specs, Văleni (Călinești), “Săcățuri” f.c. (MM), 7.VII.1995, C.P.; 2 specs, Pietrosu Mt. (National Park “Pietrosu Rodnei”, 1500-2050 m), 12.VII.1995, I.M.; 2 specs., Strâmtura, Slătioara River, Berșotă stream (MM), 7.IX.1995, C.P.; 2 specs, Izvorul Izei (MM), 9.IX.1995, C.P.; 1 spec., Desești, Săpânța, Colibi f.c. (MM), 800 m, 8.VII.1996, I.M.; 3 specs, Celic Dere Monastery (TL), 24.V.1997, C.H., 1 spec., Repedea f.c., Repedea (MM), 29.VI.1997, A.S.; 1 spec., Moisei (MM), 21.VIII.1997, C.P.; 14 specs, Mara, 1 km upstream Mara (MM), 21.VII.1998, I.M.; 1 spec., Dragomirești, Valley of Baicu River (MM), 21.VI.2003, C.P.; 2 specs, Valley of the Socolău River, 2 km upstream of the confluence of the Socolău and Rica rivers (MM), 19.VII.2004, R.S.; 1 spec., Bârsa Valley, 2 km downstream Plaiul Foi, The National Park “Piatra Craiului” (BV), 24.V.2004, R.S. (Fig. 5).

Host plants: Salicaceae (*Salix* sp.) (Mohr, 1966).

Phratora (s. str.) *vitellinae* (Linnaeus, 1858)

Material: 1 spec., Valley of Frumușeaua River, 7 km upstream Crasna Vișeuului (MM), 25.VI.1997, A.S.; 1 spec., Poienile de sub Munte, 500 m downstream the confluence of the rivers Rica and Budescu (MM), 14.VI.2003, C.P.; 1 spec., Leordina (MM), 15.VI.2003, M.S.; 5 specs, National Park Piatra Craiului Mts, Sățic, Onceoaia Valley (AG), 23.V.2004, R.S.; 1 spec., Valley of the Socolău River, 2 km upstream of the confluence of the Socolău and Rica rivers (MM), 19.VII.2004, R.S.; 1 spec., the confluence of the rivers Vișeu and Tisa (MM), 24.VII.2004, C.P.

Host plants: Salicaceae (*Salix* sp., *Populus* sp.) (Mohr, 1966).

Subtribe Prasocurina Reitter, 1913

Neophaedon Jakobson, 1901*Neophaedon* *segnis* Weise, 1884

Material: 1 spec., Rodna Mts, Corongiș Peak (MM), without other data, coll. Fr.D. (Fig. 6).

Host plants: Caryophyllaceae (*Malachium* sp., *Stellaria* sp.) (Warchałowski, 2010).

Phaedon Latreille, 1829*Phaedon* (s. str.) *armoraciae* (Linnaeus, 1758)

Material: 2 specs, Brașov Mts., without other data, coll. Fr.D.; 1 spec., Dunavățu (TL), 9.VI.1994, C.H.; 1 spec., Vadul Izei (MM), 9.VII.1995, I.M.; 1 spec., Poienile de sub Munte, Valley of Budescu River (MM), 14.VI.2003, M.S.

Host plants: Scrophulariaceae (*Veronica anagallis*) (Warchałowski, 2010).

Phaedon (s. str.) *cochleariae cochleariae* (Fabricius, 1792)

Material: 2 specs, Smereceni clearing, 7 km upstream Repedea (MM), 22-27.VI.1997, R.S. A.S.; 1 spec., Repedea f.c., Repedea (MM), 26.VI.1997, I.M.; 1 spec., Canaraua Fetii (CT), 10.IV.1999, M.S.P.; 1 spec., the confluence of Vișeu and Tisa



Fig. 4 – *Chrysomela lapponica*. Scale bar 1 mm.



Fig. 5 – *Phratora tibialis*. Scale bar 1 mm.

rivers (MM), 24.VII.2004, C.P.; 1 spec., Bordușani (IL), 21.VIII.2006, E.I.; 1 spec., France, Pommera, without other data, coll. Ed.R. (Fig. 7).

Host plants: Brassicaceae (*Nasturtium officinale*, *Roripa amphibia*) (Mohr, 1966).

Phaedon (s. str.) *laevigatus laevigatus* (Duftschmid, 1825)

Material: 1 spec., Valea Oltului (Altfluss), without other data, coll. Fr.D.

Host plants: Lamiaceae (*Galeopsis pubescens*, *G. ladanum*) (Mohr, 1966).

Prasocuris Latreille, 1802

Prasocuris (*Hydrothassa*) *glabra* (Herbst, 1783)

Material: 3 specs, Postăvaru Mts (Schuler Gebirge) (BV), without other data, coll. Fr.D.; 1 spec., Baicu f.c., Țibles Mts, Dragomirești (MM), 22.VI.2003, C.P. (Fig. 8).

Host plants: Ranunculaceae (*Ranunculus* sp., *Caltha* sp.) (Warchałowski, 2010).

Prasocuris (*Hydrothassa*) *marginella marginella* (Linnaeus, 1758)

Material: 2 specs., Postăvaru Mts (Schuler Gebirge) (BV), without other data, coll. Fr.D.; 1 spec., Deia, Câmpulung Moldovenesc (SV), 3.XI.1951, coll. I.C.; 1 spec., Broșteni (SV), 27.V.1958; 1 spec., Făina, Valley of Vaser River (MM), 21.VII.2004, C.P. (Fig. 9).

Host plants: Ranunculaceae (*Ranunculus* sp., *Caltha* sp.) (Warchałowski, 2010).



Fig. 6 – *Phaedon segnis*. Scale bar 1 mm.



Fig. 7 – *Phaedon cochleariae*. Scale bar 1 mm.

Fig. 8 – *Prasocuris glabra*. Scale bar 1 mm.Fig. 9 – *Prasocuris marginella*. Scale bar 1 mm.*Prasocuris* (s. str.) *junci* (Brahm, 1790)

Material: 2 spec., Şpring (AB), without other data, coll. I.C. (Fig. 10).

Host plants: Primulaceae (*Anagallis* sp.), Scrophulariaceae (*Veronica beccabunga*) (Mohr, 1966).

Prasocuris (s. str.) *phellandrii* Linnaeus, 1758

Material: 1 spec., Titu (DB), VIII., coll. R.C.; 1 spec., Periprava, Danube Delta (TL), 9.V.1964, M.W.; 1 spec., Eşelniţa (MH), 3.IV.1968, S.; 1 spec., Foeni (SM), 24.IV.1986, C.P.; 1 spec., Poiana Neamţului (SB), 15.V.1986, I.D.; 1 spec., Taiţa Lake, Horia (TL), 26.V.2005, I.M. (Fig. 11).

Host plants: Apiaceae (*Oenanthe* sp., *Sium* sp., *Cicuta* sp., *Berula* sp.) (Warchałowski, 2010).

In the “Grigore Antipa” National Museum’s collections 21 species of the Chrysomelini tribe belonging to eight genera are preserved: *Chrysomela* (seven species), *Plagioder*a, *Plagiosterna*, *Neophaedon* (each with one species), *Gastrophysa* and *Phratora* (each with two species), *Phaedon* (three species) and *Prasocuris* (four species), representing over 90% of the total number of species recorded in the Romanian fauna.

All species of the *Chrysomela*, *Plagioder*a, *Plagiosterna*, *Gastrophysa* and *Prasocuris* genera reported in Romania are preserved in the museum’s collection (Maican, 2005; Kippenberg, 2010).

Among the rare species in Romanian fauna, stored in this collection, *Chrysomela lapponica*, *Prasocuris junci* and *Chrysomela cuprea* should be mentioned.



Fig. 10 – *Prasocuris junci*. Scale bar 1 mm.



Fig. 11 – *Prasocuris phellandrii*. Scale bar 1 mm.

Most part of the material originates in Romania, but the collection also includes specimens from Germany (belonging to species *Plagioderma versicolora*), France (*Phaedon cochleariae*, *Chrysomela populi*), Serbia (*Chrysomela vigintipunctata vigintipunctata*), Turkey and Syria (*Gastrophysa polygoni*).

Also, the material of Chrysomelini preserved in the old Collection of Palaearctic Coleoptera of “Grigore Antipa” Museum has been reviewed. This collection includes specimens donated or aquired by the museum specialists from different areas of the Palaearctic region. It was created by gathering all the collections entered into the scientific heritage of the museum, at the end of the 19th century and the beginning of the 20th century. The Collection of Palaearctic Coleoptera stores specimens belonging to six species which are not found in the recently established Chrysomelidae Collection, namely: *Phratora vulgatissima* (Linnaeus, 1758), *P. atrovirens* (Cornelius, 1857), *P. laticollis* (Suffrian, 1851), *Neophaedon pyritosus* (Rossi, 1792), *Phaedon tumidulus* (Germar, 1824) and *Prasocuris hannoveriana* (Fabricius, 1775).

ACKNOWLEDGMENTS

The authors express thanks to Dr. Melanya Stan, deputy director of “Grigore Antipa” National Museum of Natural History, for granting access to the collections, and to Dr. Jan Bezděk (Mendel University, Brno) for his constructive comments on the manuscript. Many thanks to Dr. Ionuț Ștefan Iorgu and Dr. Tiberiu Sahlean for photos, and also to Rada Tiță, Marinela Năzăreanu, Marcela Bugnar, Mariana Foaltin and Dana Ciopec for their help in preparation and labeling of the specimens, and the proper conservation of collections. A part of this study was funded by project no. RO1567-IBB01/2018 from the Institute of Biology Bucharest of Romanian Academy.

REFERENCES

- BOUCHARD, P., Y. BOUSQUET, A. E. DAVIES, M. A. ALONSO-ZARAZAGA, J. F. LAWRENCE, C. H. C. LYAL, A. F. NEWTON, C. A. M. REID, M. SCHMITT, S. A. ŚLIPÍŃSKI, A. B. T. SMITH (2011) Family-group names in Coleoptera (Insecta). *Zookeys*, 88: 1–972.
- HOINIC, C. (1994) A review of the species of *Macrolepa* Samouelle (Coleoptera: Chrysomelidae) in Romania. *Travaux du Muséum d’Histoire Naturelle “Grigore Antipa”*, 34: 17–30.
- KIPPENBERG, H. (2010) Subfamily Chrysomelinae Latreille, 1802. Pp. 390–442. *In*: I. Löbl, A. Smetana (eds) *Catalogue of Palaearctic Coleoptera, Chrysomeloidea*, 6, Apollo Books, Stenstrup, 924 pp.
- MAICAN, S. (2005) Checklist of Chrysomelidae (Coleoptera) of Romania. *Travaux du Muséum National d’Histoire Naturelle “Grigore Antipa”*, 48: 119–136.
- MAICAN, S. (2006) Clytrins (Coleoptera: Chrysomelidae: Clytrinae) from the collections of the “Grigore Antipa” National Museum of Natural History (Bucharest). *Travaux du Muséum National d’Histoire Naturelle “Grigore Antipa”*, 49: 239–257.
- MAICAN, S. (2007a) Some Mediterranean Chrysomelids species (Coleoptera: Chrysomelidae) newly entered in the collections of “Grigore Antipa” National Museum of Natural History [Results of expeditions from Turkey and Tunisia, 2005–2006]. *Travaux du Muséum National d’Histoire Naturelle “Grigore Antipa”*, 50: 421–429.
- MAICAN, S. (2007b) Contributions to the knowledge of the leaf beetle fauna (Coleoptera: Chrysomelidae) from Maramureş (northern Romania). *Entomologica Romanica*, 12: 301–324.
- MAICAN, S., R. SERAFIM (2001) Chrysomelidae (Coleoptera) from Maramureş. *Travaux du Muséum National d’Histoire Naturelle “Grigore Antipa”*, 43: 199–233.
- MAICAN, S., R. SERAFIM (2004) Leaf-beetles (Coleoptera: Chrysomelidae) from Maramureş (Romania). *Travaux du Muséum National d’Histoire Naturelle “Grigore Antipa”*, 46: 139–159.
- MAICAN, S., R. SERAFIM (2009) Data about Cerambycidae and Chrysomelidae (Coleoptera: Chrysomeloidea) collected from Mediterranean expeditions [Results of the “Taurus” 2005, “Focida” 2006, “Punia” 2006, “Atlas” 2007 and “Euphrates” 2008 expeditions]. *Travaux du Muséum National d’Histoire Naturelle “Grigore Antipa”*, 52: 415–428.
- MAICAN, S., R. SERAFIM (2012) Overview on the Chrysomeloidea superfamily (Coleoptera: Cerambycidae, Orsodacnidae, Chrysomelidae) in Dobrogea (Romania). *Travaux du Muséum National d’Histoire Naturelle “Grigore Antipa”*, 55 (1): 65–123.
- MAICAN S., R. SERAFIM (2016) The catalogue of Donaciinae and Criocerinae species (Coleoptera: Chrysomelidae) from the new leaf beetles collection from “Grigore Antipa” National Museum of Natural History (Bucharest) (Part I). *Travaux du Muséum National d’Histoire Naturelle “Grigore Antipa”*, Bucharest, 59 (2): 179–194.
- MAICAN S., R. SERAFIM (2017) Catalogue of Cassidinae (Coleoptera: Chrysomelidae) from the New Leaf Beetles Collection from “Grigore Antipa” National Museum of Natural History (Bucharest) (Part II). *Travaux du Muséum National d’Histoire Naturelle “Grigore Antipa”*, Bucharest, 60 (2): 477–494.
- MOHR, K.-H. (1966) Familie Chrysomelidae. Pp. 95–280. *In*: Freude, H., K. W. Harde, G. A. Lohse (eds), *Die Käfer Mitteleuropas, Band 9, Cerambycidae, Chrysomelidae*, Goecke & Evers Verlag, Krefeld, 299 pp.
- NEGRU, ŞT. (1968) Ord. Coleoptera (pars). *In*: *Entomofaune de l’île de Letea (Delta du Danube)*. *Travaux du Muséum d’Histoire Naturelle “Grigore Antipa”*, 9: 81–95. (In French)
- NEGRU, ŞT., A. ROŞCA (1967) Ord. Coleoptera. *In*: *L’entomofaune des forêts du sud de la Dobroudja*. *Travaux du Muséum d’Histoire Naturelle “Grigore Antipa”*, 7: 119–148. (In French)
- REID, C.A.M. (2014). Chrysomelinae Latreille, 1802. Pp. 243–251. *In*: Leschen R.A.B., R.G. Beutel (eds.) *Coleoptera Beetles, Vol. 3, Morphology and Systematics (Phytophaga)*. Walter de Gruyter GmbH & Co KG, Göttingen, 675 pp.
- SERAFIM, R., S. MAICAN (2004) Contributions to the knowledge of the Coleopterans from the littoral of the Black Sea (Romania). *Travaux du Muséum National d’Histoire Naturelle “Grigore Antipa”*, 47: 169–210.
- SERAFIM, R., S. MAICAN (2008) Data on Cerambycidae and Chrysomelidae (Coleoptera: Chrysomeloidea) from Bucureşti and surroundings. *Travaux du Muséum National d’Histoire Naturelle “Grigore Antipa”*, 51: 387–416.
- SERAFIM, R., S. MAICAN (2011) Catalogue of Cerambycidae, Megalopodidae and Chrysomelidae (Coleoptera: Chrysomeloidea) recently entered in the patrimony of “Grigore Antipa” National Museum of Natural History (Bucharest). Igor Ceianu collection. *Travaux du Muséum National d’Histoire Naturelle “Grigore Antipa”*, 54 (2): 425–460.

- STAN, M., R. SERAFIM, S. MAICAN (2016) Data on the Beetle Fauna (Insecta: Coleoptera) in "Frumoasa" Site of Community Importance (ROSCI0085, Romania) and Its Surroundings. *Travaux du Muséum National d'Histoire Naturelle "Grigore Antipa"*, 59 (2): 129–159.
- UNGUREANU, V., S. MAICAN, R. SERAFIM (2008) Diversity of coleopterans: Cerambycidae, Chrysomelidae, Coccinellidae from Buzău area (Romania). *Travaux du Muséum National d'Histoire Naturelle "Grigore Antipa"*, 51: 171–183.
- WARCHAŁOWSKI, A. (2003) Chrysomelidae. The leaf beetles of Europe and the Mediterranean area. *Natura Optima dux*. Foundation, Warszawa, 600 pp.
- WARCHAŁOWSKI, A. (2010) The Palaearctic Chrysomelidae. Identification keys. 1 & 2. Warszawa, 1212 pp.