



TIER II CERTIFIED

CX800 Excavator

ENGINE

Model 6WG1TC,
Tier II certified
Type..... 4-stroke, turbocharged
Cylinders 6
Bore/Stroke 5.79" x 6.07"
(147 x 154 mm)
Displacement 957 in³ (15 682 cc)
Fuel injection..... Direct
Fuel..... Diesel
Fuel filter In-line strainer
Cooling Liquid
Horsepower per SAE J1349
Net 444 hp (331.1 kW) @ 1800 rpm
Maximum torque @ 1500 rpm
Net 1410 lb-ft (1912 N-m)

BOOM/ARM

Boom (Reach)

Length 27'7" (8.4 m)
Boom w/arm cylinder
& plumbing..... 17,725 lb (8040 kg)
Hoist cylinders
(2) 1,764 lb (800 kg) each
Total weight..... 21,253 lb (9640 kg)

18'5" Arm (5.62 m)

Bare arm..... 7,147 lb (3242 kg)
Bucket cylinder linkage
& plumbing..... 3,126 lb (1418 kg)
Total weight..... 10,273 lb (4660 kg)

14'7" Arm (4.44 m)

Bare arm..... 6,019 lb (2730 kg)
Bucket cylinder linkage
& plumbing..... 3,126 lb (1418 kg)
Total weight..... 9,145 lb (4148 kg)

12'0" Arm (3.66 m)

Bare arm..... 5,251 lb (2382 kg)
Bucket cylinder linkage
& plumbing..... 3,126 lb (1418 kg)
Total weight..... 8,378 lb (3800 kg)

Boom (Mass Excavation)

Length 23'9" (7.25 m)
Boom w/arm cylinder
& plumbing..... 16,491 lb (7480 kg)
Hoist cylinders
(2) 1,764 lb (800 kg) each
Total weight..... 20,018 lb (9080 kg)

9'9" Arm (2.98 m) (Mass Excavation)

Bare arm..... 5,254 lb (2383 kg)
Bucket cylinder linkage
& plumbing..... 3,545 lb (1608 kg)
Total weight..... 8,799 lb (3991 kg)

UNDERCARRIAGE

Number of rollers
Top, each track..... 3
Bottom, each track 9
Number of shoes
Double grouser – each side 51
Link pitch 10.3" (260.35 mm)

HYDRAULICS

Pumps (2) Variable displacement
axial piston design
Capacity –
Maximum 2 x 132.1 gpm
(500 L/min)
System relief pressure –
Standard..... 4554 psi (31.4 MPa)
Power Boost 4974 psi (34.3 MPa)

Control valves –

4-spool section for left track travel,
boom, bucket, arm
5-spool section for right track
travel, boom, auxiliary, swing
and arm

Boom and arm anti-drift valves

Pilot control hydraulic system –
Pump (1) Gear design
Maximum capacity 7.1 gpm
(27 L/min)
Relief pressure..... 638 psi (4.4 MPa)

Swing –

Motor (1) Fixed displacement
axial piston design
Speed..... 0-7.6 rpm
Brake..... Spring-applied
hydraulically released
with dual cushion relief
Tail swing radius 13'5" (4.1 m)

Travel –

Motor (2) Two-speed
axial piston design
Final drive Planetary gear
reduction
Drawbar pull 12,229 lb (544 kN)

Travel Speeds –

Auto shift high to low
Forward/Reverse
Low..... 1.8 mph (2.9 km/h)
High..... 2.7 mph (4.3 km/h)

Travel control valve –

Dual stage relief and counter-
balance design

HYDRAULIC CYLINDERS

Boom cylinders (2) –

Bore diameter 7.9" (200 mm)
Rod diameter 5.5" (140 mm)
Stroke 74.5" (1893 mm)

Arm cylinder (1) –

Bore diameter 8.5" (215 mm)
Rod diameter 5.9" (150 mm)
Stroke 90.2" (2290 mm)

Bucket cylinder (1) –

Bore diameter 7.5" (190 mm)
Rod diameter 5.1" (130 mm)
Stroke 61.2" (1555 mm)

Arm cylinder (1) – (mass excavation)

Bore diameter 8.5" (215 mm)
Rod diameter 5.9" (150 mm)
Stroke 85.6" (2175 mm)

Bucket cylinder (1) – (mass excavation)

Bore diameter 8.5" (215 mm)
Rod diameter 5.9" (150 mm)
Stroke 59.8" (1520 mm)

ELECTRICAL

Voltage 24 volts,
negative ground
Alternator 90 amp
Batteries (2) Low-maintenance
200 Ah (5 hr rate)

SERVICE CAPACITIES

Hydraulic tank

Refill capacity 82 gal (310 L)
Total system 190 gal (720 L)

Final drive (per side) 14.3 qt (13.5 L)

Swing drive 14.3 qt (13.5 L)

Engine

w/filter change..... 49.7 qt (47 L)

Fuel 238 gal (900 L)

Radiator 105.7 qt (100 L)

OPERATING WEIGHT

With 12'0" (3.66 m) arm, 27'7" boom,
29.5" (750 mm) track shoes, 6,614 lb
(3000 kg) bucket, 175 lb (79 kg)
operator, full fuel and standard
equipment 175,210 lb (79 474 kg)

LIFT CAPACITIES — BOOM LENGTH 27' 7" (8.40 M)

18'5" (5.62 m) Arm Lift capacities calculated using a 5,709 lb (2590 kg) bucket, 27,668 lb (12,561 kg) counterweight operating in "Light" Mode

Load (Lift Point) Height	10' (3.05 m)		15' (4.57 m)		20' (6.10 m)		25' (7.62 m)		30' (9.14 m)		35' (10.67 m)		40' (12.19 m)		45' (13.72 m)		MAXIMUM REACH		
	END	SIDE	END	SIDE	END	SIDE	END	SIDE	END	SIDE	END	SIDE	END	SIDE	END	SIDE	@	END	SIDE
+35' (10.67 m)																	34' 9" (10.59 m)	11,800 lb* (5352 kg)	11,800 lb* (5352 kg)
+30' (9.14 m)												18,650 lb* (8459 kg)	18,650 lb* (8459 kg)				38' 1" (11.60 m)	10,800 lb* (4899 kg)	10,800 lb* (4899 kg)
+25' (7.62 m)												22,350 lb* (10,138 kg)	22,350 lb* (10,138 kg)	12,000 lb* (5443 kg)	12,000 lb* (5443 kg)		40' 5" (12.31 m)	10,200 lb* (4627 kg)	10,200 lb* (4627 kg)
+20' (6.10 m)												23,450 lb* (10,637 kg)	22,050 lb* (10,002 kg)			16,700 lb (7575 kg)	42' 1" (12.82m)	9,950 lb* (4513 kg)	9,950 lb* (4513 kg)
+15' (4.57 m)							32,600 lb* (14,787 kg)	32,600 lb* (14,787 kg)	28,000 lb* (12,701 kg)	27,700 lb (12,565 kg)	25,000 lb* (11,340 kg)	20,750 lb (9412 kg)	21,400 lb* (9707 kg)	15,850 lb (7189 kg)			43' 1" (13.13 m)	10,050 lb* (4559 kg)	10,050 lb* (4559 kg)
+10' (3.05 m)			72,400 lb* (32,840 kg)	72,400 lb* (32,840 kg)	48,900 lb* (22,181 kg)	48,900 lb* (22,181 kg)	37,500 lb* (17,010 kg)	35,250 lb (15,989 kg)	30,950 lb* (14,039 kg)	25,800 lb (11,703 kg)	26,800 lb* (12,156 kg)	19,500 lb (8845 kg)	24,050 lb* (10,909 kg)	15,050 lb (6827 kg)			43' 6" (13.25 m)	10,350 lb* (4695 kg)	10,350 lb* (4695 kg)
+5' (1.52 m)			48,250 lb* (21,886 kg)	48,250 lb* (21,886 kg)	55,750 lb* (25,288 kg)	47,100 lb (21,364 kg)	41,800 lb* (18,960 kg)	32,750 lb (14,855 kg)	33,650 lb* (15,263 kg)	24,150 lb (10,954 kg)	28,500 lb* (12,927 kg)	18,350 lb (8323 kg)	24,950 lb* (11,317 kg)	14,250 lb (6464 kg)			43' 4" (13.21 m)	11,050 lb* (5012 kg)	11,050 lb* (5012 kg)
Ground-line			48,200 lb* (21,863 kg)	48,200 lb* (21,863 kg)	59,700 lb* (27,079 kg)	44,700 lb (20,276 kg)	44,800 lb* (20,321 kg)	30,950 lb (14,039 kg)	35,700 lb* (16,193 kg)	22,850 lb (10,365 kg)	29,750 lb* (13,494 kg)	17,450 lb (7915 kg)	24,550 lb* (11,136 kg)	13,650 lb (6192 kg)			42' 7" (12.97 m)	12,200 lb* (5534 kg)	12,200 lb* (5534 kg)
-5' (-1.52 m)			57,050 lb* (25,877 kg)	57,050 lb* (25,877 kg)	60,750 lb* (27,556 kg)	43,400 lb (19,686 kg)	46,150 lb* (20,933 kg)	29,800 lb (13,517 kg)	36,700 lb* (16,647 kg)	21,950 lb (9956 kg)	30,050 lb* (13,630 kg)	16,800 lb (7620 kg)	22,550 lb* (10,229 kg)	13,300 lb (6033 kg)			41' 2" (12.54 m)	13,950 lb* (6328 kg)	12,700 lb* (5761 kg)
-10' (-3.05 m)			70,900 lb* (32,160 kg)	70,900 lb* (32,160 kg)	59,250 lb* (26,875 kg)	42,900 lb (19,459 kg)	45,600 lb* (20,684 kg)	29,250 lb (13,268 kg)	36,300 lb* (16,465 kg)	21,500 lb (9752 kg)	29,500 lb* (13,381 kg)	16,550 lb (7507 kg)					39' 0" (11.88 m)	16,750 lb* (7598 kg)	13,850 lb* (6282 kg)
-15' (4.57 m)	62,850 lb* (28,508 kg)	62,850 lb* (28,508 kg)	73,250 lb* (33,226 kg)	73,150 lb* (33,180 kg)	55,100 lb* (24,993 kg)	43,050 lb (19,527 kg)	42,900 lb* (19,459 kg)	29,250 lb (13,268 kg)	34,050 lb* (15,445 kg)	21,500 lb (9752 kg)	26,800 lb* (12,156 kg)	16,750 lb (7598 kg)					36' 1" (10.99 m)	21,550 lb* (9775 kg)	15,950 lb* (7235 kg)
-20' (6.10 m)	82,000 lb* (37,195 kg)	82,000 lb* (37,195 kg)	62,300 lb* (28,259 kg)	62,300 lb* (28,259 kg)	47,850 lb* (21,704 kg)	43,750 lb (19,845 kg)	37,350 lb* (16,942 kg)	29,800 lb (13,517 kg)	28,750 lb* (13,041 kg)	22,100 lb (10,024 kg)							32' 2" (9.80 m)	25,100 lb* (11,385 kg)	19,900 lb* (9026 kg)
-25' (7.62 m)			45,950 lb* (20,843 kg)	45,950 lb* (20,843 kg)	35,750 lb* (16,216 kg)	35,750 lb* (16,216 kg)	26,700 lb* (12,111 kg)	26,700 lb* (12,111 kg)									26' 8" (8.12 m)	23,550 lb* (10,682 kg)	23,550 lb* (10,682 kg)

14'7" (4.44 m) Arm Lift capacities calculated using a 6,616 lb (3001 kg) bucket, 27,668 lb (12,561 kg) counterweight operating in "Light" Mode

Load (Lift Point) Height	10' (3.05 m)		15' (4.57 m)		20' (6.10 m)		25' (7.62 m)		30' (9.14 m)		35' (10.67 m)		40' (12.19 m)		45' (13.72 m)		MAXIMUM REACH		
	END	SIDE	END	SIDE	END	SIDE	END	SIDE	END	SIDE	END	SIDE	END	SIDE	END	SIDE	@	END	SIDE
+35' (10.67 m)																	33' 9" (10.29 m)	11,000 lb* (4990 kg)	11,000 lb* (4990 kg)
+30' (9.14 m)												16,750 lb* (7598 kg)	16,750 lb* (7598 kg)				37' 3" (11.35 m)	9,700 lb* (4400 kg)	9,700 lb* (4400 kg)
+25' (7.62 m)												22,150 lb* (10,047 kg)	22,150 lb* (10,047 kg)				39' 9" (12.12 m)	9,500 lb* (4309 kg)	9,500 lb* (4309 kg)
+20' (6.10 m)									27,850 lb* (12,633 kg)	27,850 lb* (12,633 kg)	25,500 lb* (11,567 kg)	23,450 lb (10,637 kg)	15,450 lb* (7008 kg)	15,450 lb* (7008 kg)			41' 5" (12.62 m)	9,550 lb* (4332 kg)	9,550 lb* (4332 kg)
+15' (4.57 m)							35,800 lb* (16,239 kg)	35,800 lb* (16,239 kg)	30,600 lb* (13,880 kg)	29,600 lb* (13,426 kg)	27,150 lb* (12,315 kg)	22,350 lb (10,138 kg)	20,150 lb* (9140 kg)	17,100 lb (7756 kg)			42' 5" (12.93 m)	9,900 lb* (4491 kg)	9,900 lb* (4491 kg)
+10' (3.05 m)			64,200 lb* (29,121 kg)	64,200 lb* (29,121 kg)	52,450 lb* (23,791 kg)	52,450 lb* (23,791 kg)	40,450 lb* (18,348 kg)	37,400 lb* (16,964 kg)	33,450 lb* (15,173 kg)	27,700 lb (12,565 kg)	26,950 lb* (12,224 kg)	21,150 lb (9593 kg)	23,750 lb* (10,773 kg)	16,400 lb (7439 kg)			42' 10" (13.06 m)	10,500 lb* (4763 kg)	10,500 lb* (4763 kg)
+5' (1.52 m)			43,000 lb* (19,504 kg)	43,000 lb* (19,504 kg)	58,500 lb* (26,535 kg)	49,050 lb (22,249 kg)	44,400 lb* (20,140 kg)	34,800 lb (15,785 kg)	36,050 lb* (16,352 kg)	26,050 lb (11,816 kg)	30,550 lb* (13,857 kg)	20,050 lb (9095 kg)	20,050 lb (9140 kg)	15,700 lb (7120 kg)			42' 8" (13.0 m)	11,450 lb* (5194 kg)	11,450 lb* (5194 kg)
Ground-line	21,800 lb* (9888 kg)	21,800 lb* (9888 kg)	45,100 lb* (20,457 kg)	45,100 lb* (20,457 kg)	61,750 lb* (28,009 kg)	46,450 lb (21,069 kg)	47,050 lb* (21,342 kg)	32,900 lb (14,923 kg)	37,850 lb* (17,168 kg)	24,700 lb (11,204 kg)	31,700 lb* (14,379 kg)	19,150 lb (8686 kg)	25,250 lb* (11,453 kg)	15,150 lb (6872 kg)			41' 10" (12.75 m)	12,850 lb* (5829 kg)	12,850 lb* (5829 kg)
-5' (-1.52 m)	33,900 lb* (15,377 kg)	33,900 lb* (15,377 kg)	54,200 lb* (24,585 kg)	54,200 lb* (24,585 kg)	62,300 lb* (28,259 kg)	45,150 lb (20,480 kg)	46,050 lb* (20,888 kg)	31,750 lb (14,402 kg)	36,650 lb* (16,624 kg)	23,850 lb (10,818 kg)	31,950 lb (14,492 kg)	18,600 lb (8437 kg)	16,450 lb (7462 kg)	14,900 lb (6759 kg)			40' 5" (12.32 m)	14,900 lb* (6759 kg)	14,650 lb (6645 kg)
-10' (-3.05 m)	46,550 lb* (21,115 kg)	46,550 lb* (21,115 kg)	67,350 lb* (30,549 kg)	67,350 lb* (30,549 kg)	60,450 lb* (27,420 kg)	44,600 lb (20,230 kg)	47,250 lb* (21,432 kg)	31,300 lb (14,197 kg)	38,000 lb* (17,237 kg)	23,450 lb (10,637 kg)	31,100 lb (14,107 kg)	18,400 lb (8346 kg)					36' 3" (11.05 m)	18,150 lb* (8233 kg)	16,000 lb (7257 kg)
-15' (4.57 m)	60,800 lb* (27,578 kg)	60,800 lb* (27,578 kg)	73,100 lb* (33,158 kg)	73,100 lb* (33,158 kg)	56,100 lb* (25,447 kg)	45,200 lb (20,502 kg)	44,300 lb* (20,094 kg)	31,400 lb (14,243 kg)	35,500 lb* (16,103 kg)	23,600 lb (10,705 kg)	27,400 lb* (12,428 kg)	16,700 lb (7575 kg)					35' 4" (10.77 m)	23,600 lb* (10,705 kg)	18,450 lb (8369 kg)
-20' (6.10 m)	77,900 lb* (35,335 kg)	77,900 lb* (35,335 kg)	60,250 lb* (27,329 kg)	60,250 lb* (27,329 kg)	46,550 lb* (21,115 kg)	46,350 lb (21,024 kg)	38,400 lb* (17,418 kg)	32,250 lb (14,628 kg)	29,700 lb* (13,472 kg)	24,400 lb (11,068 kg)							31' 3" (9.53m)	27,450 lb* (12,451 kg)	23,050 lb (10,455 kg)
-25' (7.62 m)			45,450 lb* (20,616 kg)	45,450 lb* (20,616 kg)	35,950 lb* (16,307 kg)	35,950 lb* (16,307 kg)	26,650 lb* (12,088 kg)	26,650 lb* (12,088 kg)									25' 6" (7.77 m)	25,800 lb* (11,703 kg)	25,800 lb* (11,703 kg)

*Lift capacities do not exceed 75% of the minimum tipping load or 87% of the hydraulic lift capacity. Capacities that are marked with an asterisk are hydraulic limited.

12'0" (3.66 m) Arm Lift capacities calculated using a 6,616 lb (3001 kg) bucket, 27,668 lb (12,561 kg) counterweight operating in "Light" Mode

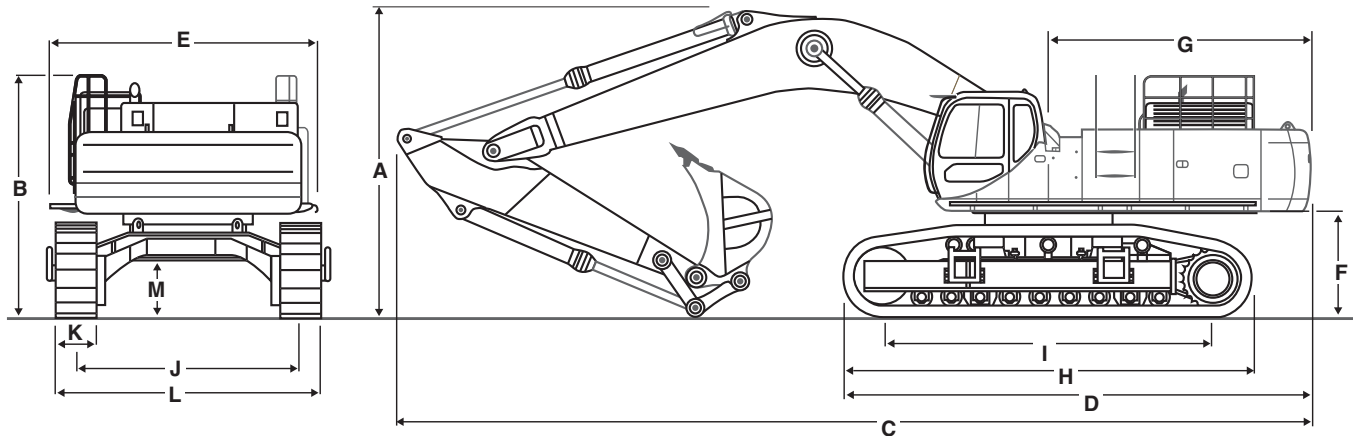
Load (Lift Point) Height	10' (3.05 m)		15' (4.57 m)		20' (6.10 m)		25' (7.62 m)		30' (9.14 m)		35' (10.67 m)		40' (12.19 m)		45' (13.72 m)		MAXIMUM REACH			
	END	SIDE	END	SIDE	END	SIDE	END	SIDE	END	SIDE	END	SIDE	END	SIDE	END	SIDE	@	END	SIDE	
+30' (9.14 m)																	33' 9" (10.29 m)	16,400 lb* (7439 kg)	16,400 lb* (7439 kg)	
+25' (7.62 m)									28,550 lb* (12,950 kg)	28,550 lb* (12,950 kg)	22,550 lb* (10,229 kg)	22,550 lb* (10,229 kg)					36' 5" (11.1 m)	16,350 lb* (7416 kg)	16,350 lb* (7416 kg)	
+20' (6.10 m)									30,550 lb* (13,857 kg)	30,550 lb* (13,857 kg)	27,850 lb* (12,633 kg)	23,200 lb* (10,523 kg)					38' 3" (11.66 m)	16,750 lb* (7598 kg)	16,750 lb* (7598 kg)	
+15' (4.57 m)			70,900 lb* (32,160 kg)	70,900 lb* (32,160 kg)	49,450 lb* (22,430 kg)	49,450 lb* (22,430 kg)	39,150 lb* (17,758 kg)	39,150 lb* (17,758 kg)	33,100 lb* (15,014 kg)	28,150 lb* (12,769 kg)	29,250 lb* (13,268 kg)	22,200 lb* (10,070 kg)					39' 4" (11.99 m)	17,600 lb* (7983 kg)	17,600 lb* (7983 kg)	
+10' (3.05 m)					56,700 lb* (25,719 kg)	51,600 lb* (23,405 kg)	43,400 lb* (19,686 kg)	36,700 lb* (16,647 kg)	35,700 lb* (16,193 kg)	27,450 lb* (12,451 kg)	30,800 lb* (13,971 kg)	21,150 lb* (9,593 kg)					39' 9" (12.12 m)	18,950 lb* (8596 kg)	16,850 lb* (7643 kg)	
+5' (1.52 m)			36,350 lb* (16,488 kg)	36,350 lb* (16,488 kg)	61,450 lb* (27,873 kg)	48,150 lb* (21,840 kg)	46,700 lb* (21,183 kg)	34,450 lb* (15,626 kg)	37,850 lb* (17,168 kg)	34,450 lb* (15,626 kg)	26,000 lb* (11,793 kg)	32,050 lb* (14,538 kg)	20,200 lb* (9,163 kg)				39' 7" (12.07 m)	20,950 lb* (9503 kg)	16,300 lb* (7394 kg)	
Ground-line			46,400 lb* (21,047 kg)	46,400 lb* (21,047 kg)	63,200 lb* (28,667 kg)	46,300 lb* (21,001 kg)	48,550 lb* (22,022 kg)	32,900 lb* (14,923 kg)	39,150 lb* (17,758 kg)	24,900 lb* (11,294 kg)	32,750 lb* (14,855 kg)	19,500 lb* (8,845 kg)					38' 9" (11.81 m)	23,950 lb* (10,864 kg)	16,500 lb* (7484 kg)	
-5' (-1.52 m)	40,300 lb* (18,280 kg)	40,300 lb* (18,280 kg)	60,950 lb* (27,646 kg)	60,950 lb* (27,646 kg)	62,300 lb* (28,259 kg)	45,600 lb* (20,684 kg)	46,650 lb* (21,160 kg)	32,100 lb* (14,560 kg)	39,300 lb* (17,826 kg)	24,250 lb* (11,000 kg)	32,450 lb* (14,719 kg)	19,100 lb* (8,664 kg)					37' 2" (11.33 m)	28,500 lb* (12,927 kg)	17,400 lb* (7893 kg)	
-10' (-3.05 m)	56,700 lb* (25,719 kg)	56,700 lb* (25,719 kg)	76,300 lb* (34,609 kg)	75,800 lb* (34,382 kg)	59,100 lb* (26,807 kg)	45,700 lb* (20,729 kg)	46,800 lb* (21,228 kg)	31,950 lb* (14,492 kg)	37,800 lb* (17,146 kg)	24,150 lb* (10,954 kg)							34' 10" (10.62 m)	30,700 lb* (13,925 kg)	19,300 lb* (8754 kg)	
-15' (4.57 m)	74,800 lb* (33,929 kg)	74,800 lb* (33,929 kg)	67,350 lb* (30,549 kg)	67,350 lb* (30,549 kg)	53,250 lb* (24,154 kg)	46,450 lb* (21,069 kg)	42,500 lb* (19,278 kg)	32,450 lb* (14,719 kg)	33,800 lb* (15,331 kg)	24,600 lb* (11,158 kg)							31' 6" (9.6 m)	31,250 lb* (14,175 kg)	22,900 lb* (10,387 kg)	
-20' (6.10 m)			54,200 lb* (24,585 kg)	54,200 lb* (24,585 kg)	43,650 lb* (19,799 kg)	43,650 lb* (19,799 kg)	34,400 lb* (15,604 kg)	33,700 lb* (15,286 kg)										26' 10" (8.18 m)	30,900 lb* (14,016 kg)	30,250 lb* (13,721 kg)

LIFT CAPACITIES — BOOM LENGTH 23' 9" (7.25 M) (MASS EXCAVATION)

9'9" (2.98 m) Arm Lift capacities calculated using a 7,623 lb (3450 kg) bucket, 27,668 lb (12,561 kg) counterweight operating in "Light" Mode

Load (Lift Point) Height	10' (3.05 m)		15' (4.57 m)		20' (6.10 m)		25' (7.62 m)		30' (9.14 m)		35' (10.67 m)		40' (12.19 m)		45' (13.72 m)		MAXIMUM REACH				
	END	SIDE	END	SIDE	END	SIDE	END	SIDE	END	SIDE	END	SIDE	END	SIDE	END	SIDE	@	END	SIDE		
+30' (9.14 m)																	26' 4" (8.03 m)	26,500 lb* (12,020 kg)	26,500 lb* (12,020 kg)		
+25' (7.62 m)																		29' 8" (9.04 m)	26,200 lb* (11,884 kg)	26,200 lb* (11,884 kg)	
+20' (6.10 m)							38,750 lb* (17,577 kg)	38,750 lb* (17,577 kg)	34,900 lb* (15,830 kg)	30,400 lb* (13,789 kg)								31' 11" (9.73 m)	26,900 lb* (12,202 kg)	26,900 lb* (12,202 kg)	
+15' (4.57 m)			71,000 lb* (32,205 kg)	71,000 lb* (32,205 kg)	52,050 lb* (23,609 kg)	52,050 lb* (23,609 kg)	42,400 lb* (19,232 kg)	40,000 lb* (18,144 kg)	36,750 lb* (16,670 kg)	29,150 lb* (13,222 kg)								33' 3" (10.13 m)	28,500 lb* (12,927 kg)	24,100 lb* (10,932 kg)	
+10' (3.05 m)			84,550 lb* (38,351 kg)	84,550 lb* (38,351 kg)	56,950 lb* (25,832 kg)	53,500 lb* (24,267 kg)	46,200 lb* (20,956 kg)	37,500 lb* (17,010 kg)	38,700 lb* (17,554 kg)	27,750 lb* (12,587 kg)								33' 9" (10.29 m)	31,200 lb* (14,152 kg)	22,550 lb* (10,229 kg)	
+5' (1.52 m)			68,450 lb* (31,048 kg)	68,450 lb* (31,048 kg)	63,600 lb* (28,848 kg)	50,150 lb* (22,748 kg)	49,100 lb* (22,271 kg)	35,450 lb* (16,080 kg)	40,250 lb* (18,257 kg)	26,550 lb* (12,043 kg)								33' 6" (10.21 m)	35,450 lb* (16,080 kg)	22,100 lb* (10,024 kg)	
Ground-line			77,700 lb* (35,244 kg)	77,700 lb* (35,244 kg)	64,950 lb* (29,461 kg)	48,250 lb* (21,886 kg)	50,250 lb* (22,793 kg)	34,100 lb* (15,468 kg)	40,600 lb* (18,416 kg)	25,700 lb* (11,657 kg)								32' 6" (9.91 m)	36,750 lb* (16,670 kg)	22,650 lb* (10,274 kg)	
-5' (-1.52 m)	59,100 lb* (26,807 kg)	59,100 lb* (26,807 kg)	83,300 lb* (37,784 kg)	78,050 lb* (35,403 kg)	62,950 lb* (28,554 kg)	47,600 lb* (21,591 kg)	49,050 lb* (22,249 kg)	33,500 lb* (15,195 kg)	38,950 lb* (17,667 kg)	25,400 lb* (11,521 kg)								30' 8" (9.35 m)	37,600 lb* (17,055 kg)	24,600 lb* (11,158 kg)	
-10' (-3.05 m)	84,400 lb* (38,283 kg)	84,400 lb* (38,283 kg)	73,900 lb* (33,520 kg)	73,900 lb* (33,520 kg)	57,200 lb* (25,945 kg)	47,950 lb* (21,750 kg)	44,600 lb* (20,230 kg)	33,750 lb* (15,309 kg)										27' 9" (8.46 m)	38,550 lb* (17,486 kg)	28,900 lb* (13,109 kg)	
-15' (4.57 m)			58,960 lb* (26,744 kg)	58,960 lb* (26,744 kg)	46,200 lb* (20,956 kg)	46,200 lb* (20,956 kg)													23' 5" (7.14 m)	38,050 lb* (17,259 kg)	38,050 lb* (17,259 kg)

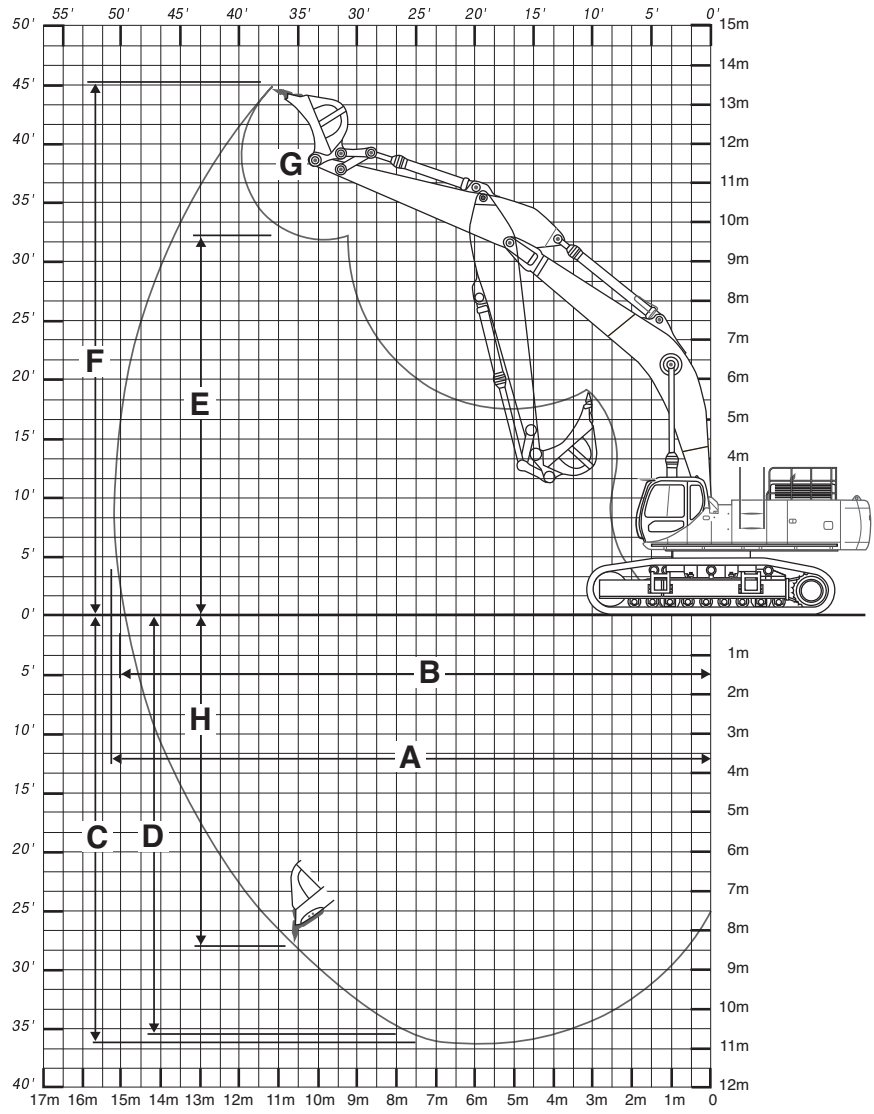
GENERAL DIMENSIONS



DIMENSIONS — BOOM LENGTH 27' 7" (8.40 M)

	18'5" (5.62 m) Arm	14'7" (4.44 m) Arm	12'0" (3.66 m) Arm
A. Overall height	20'4" (6.20 m)	16'5" (5.00 m)	15'9" (4.8 m)
B. Top hand rail height	12'5" (3.79 m)	12'5" (3.79 m)	12'5" (3.79 m)
C. Overall length	45'5" (13.79 m)	46'3" (14.10 m)	46'5" (14.11 m)
D. w/o attachment	23'9" (7.25 m)	23'9" (7.25 m)	23'9" (7.25 m)
E. Width of upperstructure	13'7" (4.13 m)	13'7" (4.13 m)	13'7" (4.13 m)
F. Upperstructure ground clearance	5'3" (1.59 m)	5'3" (1.59 m)	5'3" (1.59 m)
G. Tail swing radius	13'5" (4.10 m)	13'5" (4.10 m)	13'5" (4.10 m)
H. Track overall length	20'10" (6.36 m)	20'10" (6.36 m)	20'10" (6.36 m)
I. Center to center (idler to sprocket)	16'8" (5.07 m)	16'8" (5.07 m)	16'8" (5.07 m)
J. Track gauge — extended	11'4" (3.45 m)	11'4" (3.45 m)	11'4" (3.45 m)
K. Track shoe width	29.5" (750 mm)	29.5" (750 mm)	29.5" (750 mm)
L. Track overall width w/29.5" (750 mm) shoes	14'4" (4.36 m)	14'4" (4.36 m)	14'4" (4.36 m)
L. Track overall width w/29.5" (750 mm) side frames retracted	12'3" (3.74 m)	12'3" (3.74 m)	12'3" (3.74 m)
M. Minimum ground clearance	2'11" (0.84 m)	2'11" (0.84 m)	2'11" (0.84 m)
Working weight*	177,106 lb (80 334 kg)	175,997 lb (79 822 kg)	175,210 lb (79 474 kg)
Ground pressure	13.8 psi (95 bar)	13.7 psi (94 bar)	13.7 psi (94 bar)

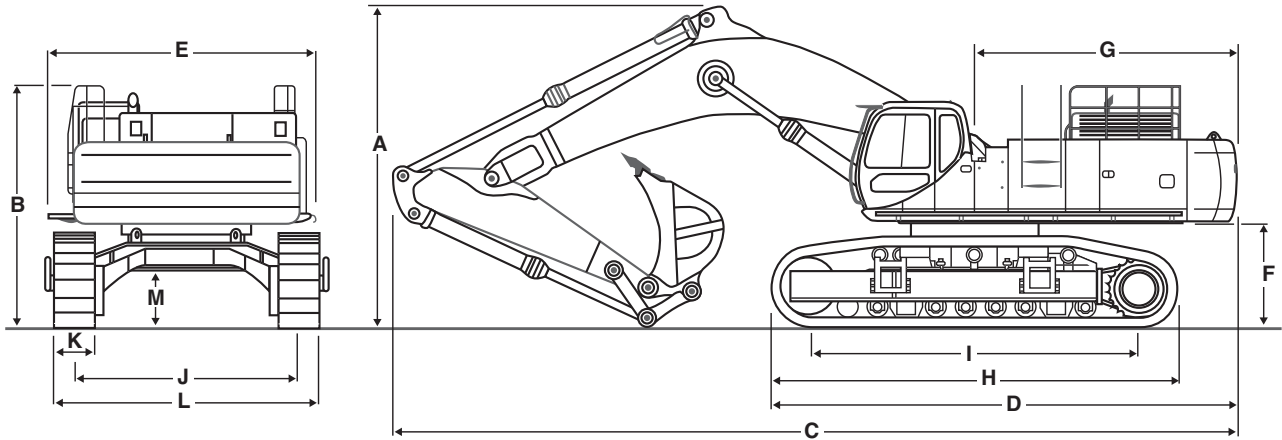
*With 29.5" (750 mm) track shoe, 6,614 lb (3000 kg) bucket, 165 lb (75 kg) operator, full fuel and standard equipment.



PERFORMANCE SPECS — BOOM LENGTH 27' 7" (8.40 M)

	18'5" (5.62 m) Arm	14'7" (4.44 m) Arm	12'0" (3.66 m) Arm
A. Maximum dig radius	52'10" (16.11 m)	49'0" (14.94 m)	46'4" (14.12 m)
B. Dig radius at groundline	52'1" (15.86 m)	48'2" (14.68 m)	45'5" (13.84 m)
C. Maximum dig depth	35'0" (10.66 m)	31'1" (9.47 m)	28'6" (8.69 m)
D. Dig depth - 8'0" (2.44 m) level bottom	34'8" (10.56 m)	30'9" (9.36 m)	28'1" (8.57 m)
E. Dump height	33'4" (10.17 m)	31'2" (9.51 m)	29'3" (8.92 m)
F. Overall reach height	48'1" (14.66 m)	44'7" (13.6 m)	42'4" (12.91 m)
G. Bucket rotation	167°	167°	167°
H. Vertical straight wall dig depth	29'11" (9.11 m)	25'5" (7.75 m)	21'3" (6.44 m)
J. Minimum swing radius	20'4" (6.21 m)	20'1" (6.13 m)	20'7" (6.27 m)
Arm digging force			
Standard	45,393 lb (201.9 kN)	52,156 lb (232 kN)	61,598 lb (274 kN)
Power Boost	49,819 lb (221.6 kN)	56,877 lb (253 kN)	67,443 lb (300 kN)
Bucket digging force			
Standard	74,187 lb (330 kN)	74,187 lb (330 kN)	74,187 lb (330 kN)
Power Boost	81,156 lb (361 kN)	81,156 lb (361 kN)	81,156 lb (361 kN)

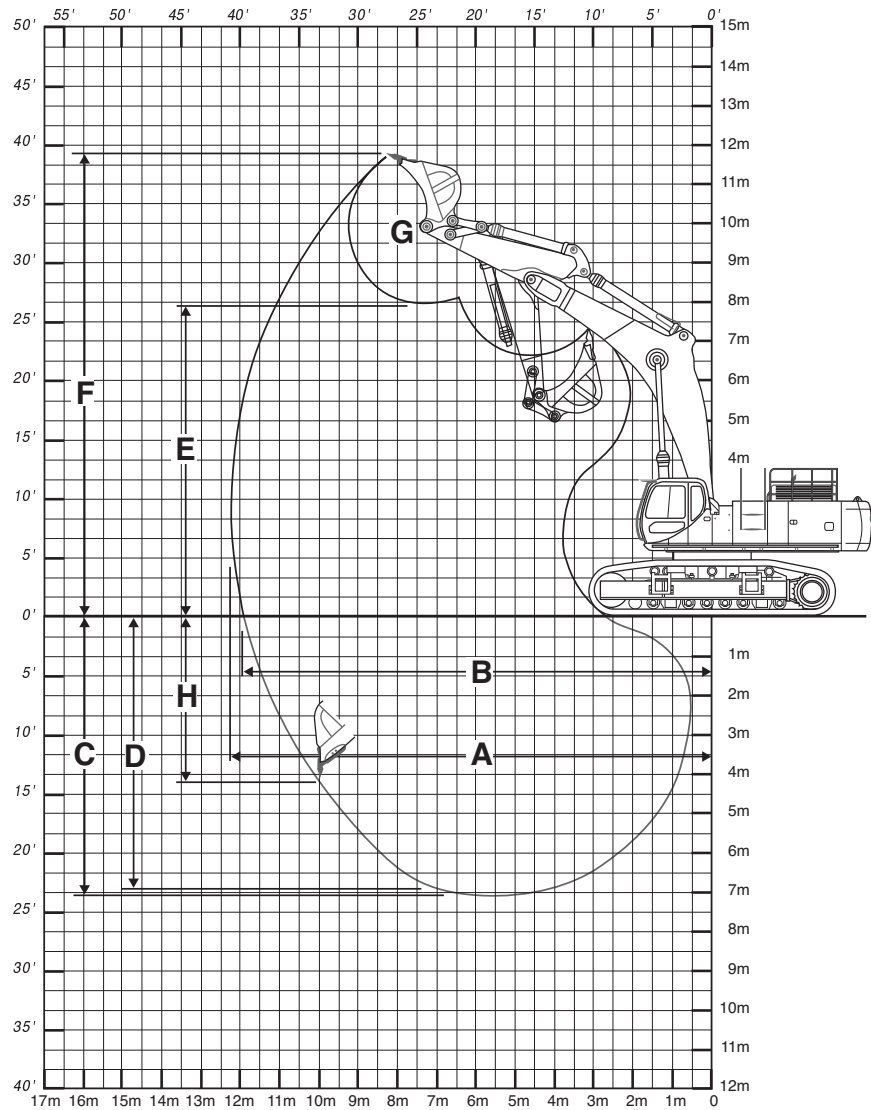
GENERAL DIMENSIONS



DIMENSIONS — BOOM LENGTH 23' 9" (7.25 M) (MASS EXCAVATION)

	9' 9" (2.98 m) Arm
A. Overall height	16' 7" (5.0 m)
B. Cab height	12' 5" (3.79 m)
C. Overall length	42' 8" (13.01 m)
D. w/o attachment	23' 9" (7.25 m)
E. Width of upperstructure	13' 7" (4.13 m)
F. Upperstructure ground clearance	5' 3" (1.59 m)
G. Tail swing radius	13' 5" (4.10 m)
H. Track overall length	20' 10" (6.36 m)
I. Center to center (idler to sprocket)	16' 8" (5.07 m)
J. Track gauge — extended.....	11' 4" (3.45 m)
K. Track shoe width	29.5" (750 mm)
L. Track overall width w/29.5" (750 mm) shoes	14' 4" (4.36 m)
L. Track overall width w/29.5" (750 mm) side frames retracted	12' 3" (3.74 m)
M. Minimum ground clearance	2' 11" (0.89 m)
Working weight*	175,405 lb (79 562 kg)
Ground pressure	13.7 psi (94 bar)

*With 29.5" (750 mm) track shoe, 7,623 lb (3450 kg) bucket, 165 lb (75 kg) operator, full fuel and standard equipment.



PERFORMANCE SPECS — BOOM LENGTH 23' 9" (7.25 M)

	9' 9" (2.98 m) Arm
A. Maximum dig radius	40' 5" (12.31 m)
B. Dig radius at groundline	39' 4" (11.99 m)
C. Maximum dig depth	23' 1" (7.03 m)
D. Dig depth - 8'0" (2.44 m) level bottom	22' 7" (6.88 m)
E. Dump height	25' 11" (7.89 m)
F. Overall reach height	38' 7" (11.76 m)
G. Bucket rotation	167°
H. Vertical straight wall dig depth	13' 11" (4.25 m)
J. Minimum swing radius	17' 8" (5.39 m)
Arm digging force	
Standard	71,264 lb (317 kN)
Power Boost	78,009 lb (347 kN)
Bucket digging force	
Standard	96,668 lb (430 kN)
Power Boost	105,660 lb (470 kN)

STANDARD EQUIPMENT

OPERATOR'S COMPARTMENT

Cab with Isomount® system
Adjustable deluxe seat with
3" (76 mm) retractable seat belt
Vandal cover
Front window safety glass
Climate Control System
AM/FM Radio w/auto tuner
Roof hatch, skylight
Sliding Lexan* windows
Windshield wiper w/washer

ENGINE

6WG1TC turbocharged diesel
Tier II certified
Warm up mode
Selectable one touch or auto
accelerator/decelerator

ELECTRICAL

Electronic Systems Monitor
Horn, dual

HYDRAULICS

ISO pattern pilot controls
4 Position mode selector:
H, S, F & Auto
Auto Power Boost
2 Variable flow piston pumps
Auxiliary attachment mode
Auto pump destroke
Auxiliary hydraulic valve
Boom and arm anti-drift valves
Selectable cushion control
for boom and arm
Controlled free swing
Ultra Clean filtration system
Boom priority

UNDERCARRIAGE

Shoes: 29.5" (750 mm) 2-bar,
51 per side
Track length: 20'10" (6.36 m)
Track gauge: 11'11" (3.64 m)

TRACK DRIVE

2-speed hydrostatic travel
Straight tracking travel priority
Disc-type parking brakes

UPPERSTRUCTURE

Boom: 27'7" (8.40 m) one piece
Free swing control
Hammer adaptable,
no reinforcing required
Swing brake

OTHER

Counterweight: 27,668 lb (12 561 kg)
Single key vandal lockup

OPTIONAL EQUIPMENT

UPPERSTRUCTURE

Arm: 14'7" or 12'0"
.....(4.44 m or 3.66 m)
Boom: 27'7" (8.4 m)

Mass Excavation

Arm: 9'9" (2.98 m)
Boom: 23'9" (7.25 m)

HYDRAULICS

Auxiliary hydraulics
Single acting, one pump
Double acting, single or dual pump
(includes heavy-duty
bucket linkage)
Double acting general purpose
for use with thumb kit
Control pattern selector valve

OTHER

Load holding control devices,
cylinder mounted
Case/JRB Slide-Loc* Hydraulic
Coupler

BUCKETS

Application	Width	SAE Heaped Capacity
Heavy-duty.....	42" thru 84" (1.06 m thru 2.13 m).....	2.53 yd ³ thru 5.91 yd ³ (1.93 m ³ thru 4.52 m ³)
Extreme-duty.....	45" thru 84" (1.14 m thru 2.13 m).....	2.47 yd ³ thru 5.30 yd ³ (1.89 m ³ thru 4.05 m ³)

NOTE: All specifications are stated in accordance with SAE Standards or Recommended Practices, where applicable.

NOTE: All engines meet current EPA emissions requirements.

IMPORTANT: CNH America LLC reserves the right to change these specifications without notice and without incurring any obligation relating to such change. CNH America LLC does not warrant the safety or reliability of attachments from other manufacturers.

Case is a registered trademark of CNH America LLC. Any trademarks referred to herein, in association with goods and/or services of companies other than CNH America LLC, are the property of those respective companies.



www.casece.com

CASE IS A BRAND OF CNH, A GLOBAL LEADER FOR CONSTRUCTION EQUIPMENT, AGRICULTURAL EQUIPMENT AND FINANCIAL SERVICES.