



# ATI FirePro™ V5800 Professional Graphics



## ATI FirePro™ V5800



- Outstanding performance for the 3D mid-range segment
- 2.5X computing capability over prior generation<sup>1</sup>
- AMD Eyefinity multi-display technology<sup>2</sup>
- Drive up to 3 independent 30" displays<sup>3</sup> 12.3 million pixels<sup>4</sup>
- Scalable ultra parallel processing architecture with 800 stream processors

### Perfect balance of price and performance in a single slot, full height/full length form factor

The ATI FirePro™ V5800 professional graphics is a mid-range solution featuring AMD Eyefinity multi-display technology, 800 stream processors for ultra parallel processing, and 1GB of ultra high speed GDDR5 memory. Ideally suited for CAD and DCC professionals who work with medium to large models or scenes, the ATI FirePro™ V5800 is an excellent combination of price and performance.

ATI FirePro™ V5800 professional graphics feature three independent DisplayPort outputs with AMD Eyefinity technology support, enabling improvement to productivity at a much lower acquisition and operating cost than multi-card solutions. In addition, with native multi-card support, users can see more and do more using up to six displays, driven by two ATI FirePro™ V5800 professional graphics in the same workstation<sup>5</sup>.

### Support for the most common digital interface for monitors makes it easier than ever to configure dual-display set ups

The ATI FirePro™ V5800 DVI professional graphics is an ideal solution for Medical Imaging, CAD or DCC professionals who need two large high resolution displays but don't require the latest display technologies. Extending prior DVI display investments, the ATI FirePro™ V5800 DVI drives two large high resolution DVI displays, allowing users to see more and do more.

Many professionals today are working on more than one display. They can view and interact with data from one or more applications on one display while animating a scene, manipulating a model or viewing medical images on the other. Like with the ATI FirePro™ V5800, users can also stretch an image or an application across both screens for one large view.

## ATI FirePro™ V5800 DVI



- Drive two 30", five megapixel displays
- Two independent Dual-link DVI outputs
- Full 30-bit precision display pipeline Requires 30-bit display
- Full 10 and 12 bit grayscale output
- Maximum digital resolution 2560x2048 at 60Hz with packed pixel mode

### Innovation and Reliability from a Technology Leader

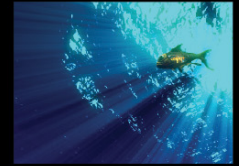
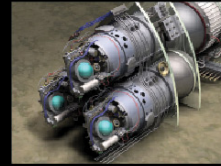
AMD FirePro™ cards are engineered to deliver innovation and reliability for a wide range of professional operating environments, including Windows® 7, Microsoft® Windows® XP, Windows Vista® and Linux®. The AMD FirePro™ Unified Driver, which supports all AMD FirePro™ products, helps reduce the total cost of ownership by simplifying installation, deployment and maintenance.

AMD FirePro™ professional graphics are thoroughly tested and certified with many major Computer Aided Design (CAD) and Digital Content Creation (DCC) applications, ensuring a level of reliability and compatibility not found in consumer graphics.

In addition, AMD FirePro™ products incorporate a unique AutoDetect technology. As users open new 3D applications, or move between them, driver settings are automatically configured for optimized performance of supported applications, no matter what the user's workflow demands.

© 2012 Advanced Micro Devices, Inc. All rights reserved. AMD, the AMD Arrow logo, ATI, the ATI logo, CrossFire, FirePro, and combinations thereof are trademarks of Advanced Micro Devices, Inc. Microsoft, Windows, Windows Vista, and DirectX are registered trademarks of Microsoft Corporation in the United States and/or other jurisdictions. Other names are for informational purposes only and may be trademarks of their respective owners. OpenCL and the OpenCL logo are trademarks of Apple Inc. used by permission by Khronos. Features, performance and specifications may vary by operating environment and are subject to change without notice. Images courtesy of NEC; StudioGPU; PTC; Factory Five; Youngwoong Jang; and Matt Allen at the University of Hertfordshire. Used by permission. Products may not be exactly as shown. 48152C





# ATI FirePro™ V5800

## Professional Graphics

Features	Benefits
Multi-Display Support	ATI FirePro™ V5800 supports up to three displays and the ATI FirePro™ V5800 DVI supports two, with independent display resolution, refresh rate and display rotation settings
Full 30-bit Display Pipeline	Enables more color values than 24-bit products for more accurate color and grayscale reproductions and superior visual fidelity; requires 30-bit display
1GB GDDR5 Memory	Helps to prevent system bog downs and latency issues when multi-tasking across multiple applications or working with more complex models and animations
AutoDetect Technology	As a user moves between applications, or opens new ones, the graphics driver settings are automatically configured for optimized performance
Full Shader Model 5.0 Support	Create more complex geometry and scenes without taxing the CPU
Certification	There is a high level of assurance when purchasing a configuration that is reliable and provides the performance necessary for professional 3D graphics needs
DirectX® 11 and OpenGL® 4.1 Support	Great performance, scalability and reliability
OpenCL™ 1.1 Support	Industry standard API - Open, multiplatform development platform for enabling broad adoption of heterogeneous computing

Ordering Information for Retail SKUs		
	V5800	V5800 DVI
Part Number	100-505605	100-505682
UPC Code	727419415156	727419415231
Retail Package Contents	<ul style="list-style-type: none"> <li>→ ATI FirePro™ V5800</li> <li>→ AMD CrossFire™ Pro connection cable</li> <li>→ Installation CD with drivers and documentation</li> <li>→ Quick Start Reference Guide</li> <li>→ One DP to DVI (single-link) adapter<sup>6</sup></li> <li>→ One DVI to VGA adapter<sup>7</sup></li> </ul>	<ul style="list-style-type: none"> <li>→ ATI FirePro™ V5800 DVI</li> <li>→ AMD CrossFire™ Pro connection cable</li> <li>→ Installation CD with drivers and documentation</li> <li>→ Quick Start Reference Guide</li> <li>→ Two DVI to VGA adapters</li> </ul>
Retail Package Weight & Dimensions	<ul style="list-style-type: none"> <li>→ 1.50 lbs (0.68 Kg)</li> <li>→ 11.5 x 9.5 x 2.87 in (29.21 x 24.13 x 7.30 cm)</li> </ul>	<ul style="list-style-type: none"> <li>→ 1.50 lbs (0.68 Kg)</li> <li>→ 11.5 x 9.5 x 2.87 in (29.21 x 24.13 x 7.30 cm)</li> </ul>

Product Specifications		
Display Outputs	V5800	V5800 DVI
DisplayPort	Two Standard	None
Dual-link DVI	One	Two
Max Resolution	2560x1600 at 60Hz	2560x2048, at 60Hz with packed pixel mode
GPU		
Stream Processors	800	800
Memory Interface	128-bit	128-bit
Memory		
Size/Type	1GB GDDR5	1GB GDDR5
Bandwidth (GB/s)	64.0	64.0
API/Feature/OS Support		
DirectX®	11.0	
OpenGL®	4.1	
Shader Model	5.0	
AMD Eyefinity Technology Support <sup>1</sup>	Yes, ATI FirePro V5800 only	
AMD CrossFire™ Pro Support <sup>5</sup>	Yes	
Stream Computing	Yes, OpenCL 1.1	
OS Support	Microsoft® Windows® XP, Windows Vista®, Windows® 7 or Linux® <sup>8</sup> (32-bit or 64-bit)	
Thermal/Power/Form Factor		
Max Power	74W	
Slot(s)	1	
Form Factor	Full Height / Full Length	
Support Energy Star® 5.0 Compliance	Yes	
Bus Interface	PCI Express® 2.1 x16	

Additional Details	
System Requirements	<ul style="list-style-type: none"> <li>→ 512MB of system memory</li> <li>→ CD-ROM drive (or internet access) for software installation</li> </ul>
Warranty and Support	<ul style="list-style-type: none"> <li>→ Three year limited product repair / replacement warranty</li> <li>→ Direct toll free phone and email access to dedicated workstation technical support team<sup>9</sup></li> <li>→ Advanced parts replacement option</li> </ul>

<sup>1</sup>Based on 800 stream processors for ATI FirePro™ V5800 vs. 320 stream processors for ATI FirePro™ V5700.

<sup>2</sup>Allows multiple displays to be supported using a single enabled AMD FirePro™ professional graphics card; number of supported displays varies by card model. Windows 7, Windows Vista™ or Linux® is required to support more than two displays. Depending on card model, native DisplayPort™ connectors and/or certified DisplayPort™ active or passive adapters to convert your monitor's native input to your card's DisplayPort™ or Mini-DisplayPort™ connector(s) may be required.

<sup>3</sup>Each ATI FirePro™ V5800 professional graphics card supports up to three independent displays, using two DisplayPort connectors and the one dual-link DVI connector (cables not included).

<sup>4</sup>2560 x 1600 resolution required for full 12.3 million pixel resolution.

<sup>5</sup>Specific power, chassis space, connector, and resource requirements may apply. Check with system manufacturer to see if dual cards are supported.

<sup>6</sup>Second DVI output supported through one included single-link DP to DVI adapters, dual-link and additional single-link adapters sold separately.

<sup>7</sup>VGA output supported through one included DP to VGA adapter, additional adapters sold separately.

<sup>8</sup>Linux® drivers can be downloaded from support.amd.com.

<sup>9</sup>Toll free hotline available in U.S. and Canada.



For more information, visit [www.amd.com/firepro](http://www.amd.com/firepro)