

BARRY COUNTY Parks and Recreation Plan 2019-2023





2018 Parks and Recreation Board

Cindy Vujea – Economics Development Alliance
Don Hutchens – Citizen at Large
Frank Jesensek – Citizen at Large
Douglas Klein – Citizen at Large
Sarah Nelson – Barry Conservation District
Rick Moore – Thornapple Trail Association
Catherine Getty, Chairperson – Thornapple Area Parks and Rec
Joyce Snow – Citizen at Large
Jim Cary – City of Hastings
Joe Sancimino – Citizen at Large
Dan Parker – Barry County Commissioner

2018 Charlton Park Village and Museum Board

Russ Yarger - Citizen at Large
Doris Lee Hale – Secretary, Citizen at Large
Sharon Zebrowski- Chair, Citizen at Large
Heather Wing – Barry County Commissioner
Daryl Cheeseman, Gas & Steam Club
Peggy Day - Charlton Park Village Foundation
Colleen Acker - Citizen at Large
Bob Spaulding - Citizen at Large
Rick Moore, Vice-Chair, Citizen at Large

TABLE OF CONTENTS

1. Introduction

- Introduction
- Plan Purpose
- Plan Summary

2. Community Description

- Community Description
- Natural Resources
- Regional Location Map

3. Administrative Structure

- Parks and Recreation Board
- Historic Charlton Park Village and Museum Board
- Park and Recreation Staff
- Organizational Chart
- Annual and Projected Budgets
- Parks and Recreation Board Policies and Procedures
- Charlton Park Village and Museum Board Policies and Procedures

4. Recreation Inventory

- Barry County Facilities
 - Historic Charlton Park
 - McKeown Bridge
 - Undeveloped Lands
 - Paul Henry Thornapple Trail
- Park Accessibility Assessment
- DNR Recreation Grant Inventory
- State of Michigan Facilities
- Other Municipalities
- School Facilities
- Private Recreational Facilities
- Recreation Facility Distribution Map
- Municipal Recreation Facilities Table
- School Recreation Facilities Table
- Campsite Table
- Boat Launch Table

5. Planning and Public Input Process

Recreation Planning
Plan Process and Development

6. Needs Assessment

Introduction
Recreation Standards
Needs analysis
Accessibility Analysis

7. Goals and Objectives

8. Action Program and Capital Improvement Schedule

Action Program
Capital Improvement Schedule

9. Local Adoption and Certification Plan

Certification Checklist
County Commission Resolution of Adoption
Parks and Recreation Board Resolution of Adoption
Charlton Park Village and Museum Board Resolution of Adoption
Publication Notice
Minutes of Public Hearing
Regional Planning Agency Transmittal Letter

10. Appendices

Aerial Photographs of Park sites
Public Notices
Public Meeting Notes

Barry County Parks and Recreation Master Plan 2019-2023

1. Introduction



SECTION 1 INTRODUCTION

Parks, recreation and open space are important elements of Barry County and reflect positively on the quality of life of residents and experiences of visitors. In recent years, a more holistic approach to recreational planning has been encouraged, stretching beyond the boundaries of traditional parks to include sidewalks, linear trails, greenways, and other publicly and privately owned lands. In addition to the human benefits of recreation and open space, there are also important environmental benefits such as water resource protection, reduced vehicular traffic, and plant and wildlife protection.

Plan Purpose

This 2019 Barry County Parks and Recreation Master Plan is a guide for the future development of recreation opportunities for the residents and visitors of the County. The plan addresses current recreation issues and identifies future needs of the community and the means for meeting those needs over the up-coming five-year period. It addresses both short and long-range goals and objectives and identifies an action program by which these goals and objectives can be accomplished. In addition, the plan serves as an educational tool to acquaint local officials and residents of the need for a sound and balanced recreation program.

This Plan has been developed both to reflect the needs and goals of the community and to meet the Michigan Department of Natural Resources requirements for qualifying for Federal and State funding assistance. These funds are available for land acquisition, facility development, and improvements to new and existing parklands.

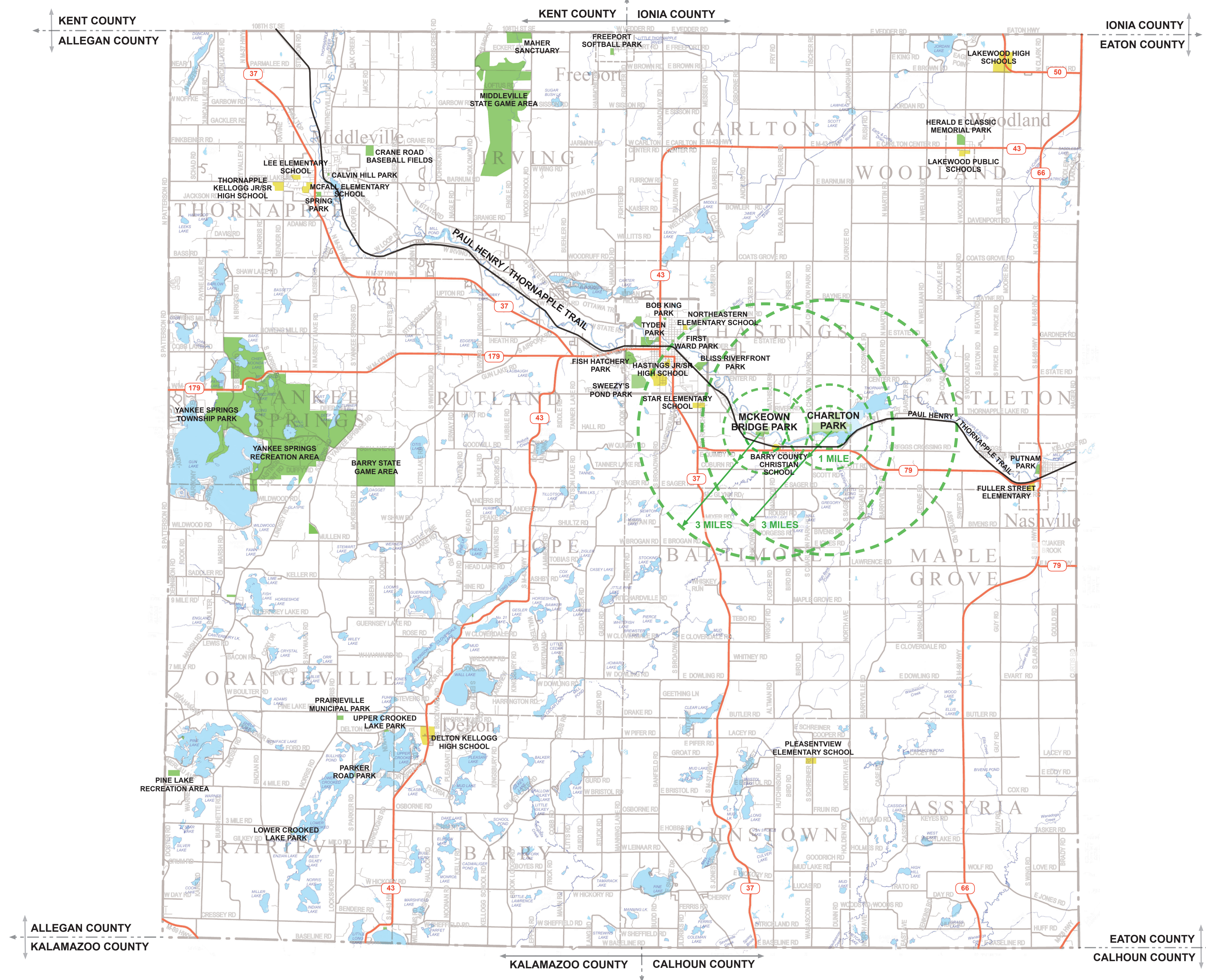
Plan Scope

The scope of this Plan includes proposals for the management and improvement of the County's existing sites as well as proposals to increase the facilities available. This Plan covers the major goals for management and development of Charlton Park Village and

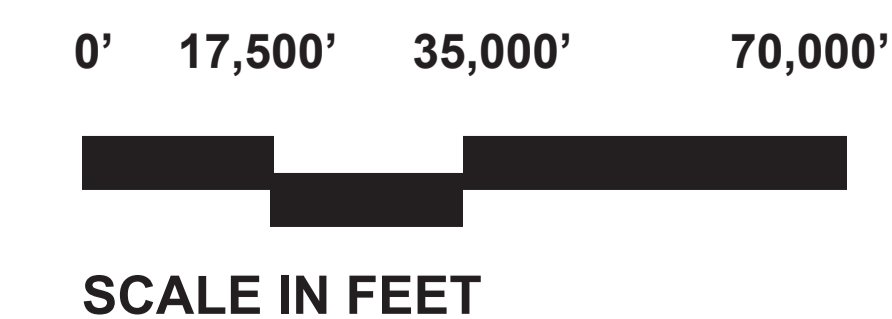
Museum. However, due to the unique nature of this facility, this document will be supplemented by a more specific Historic Charlton Park Strategic Plan. Although the Plan concentrates on County-owned land, consideration is also given to facilities owned and operated by other municipalities and private entities within the County. In terms of time, the Action Program section of this document covers development over the next five years. However, the Goals and Objectives developed to guide recreation planning may continue to be relevant for many more years to come.

Plan Summary

Barry County currently owns and manages three recreational facilities: Historic Charlton Park, McKeown Bridge Park, and the Paul Henry - Thornapple Trail. This Plan identifies proposed improvements to all of these assets. Other items considered in the Plan include planning for greenways and connectivity across the County.



BARRY COUNTY - VICINITY MAP
PARKS & RECREATION PLAN UPDATE
BARRY COUNTY, MICHIGAN



DATE
12.6.2018
PROJECT NO.
2049



Barry County Parks and Recreation Master Plan 2019-2023

2. Community Description



SECTION 2 COMMUNITY DESCRIPTION

Barry County is situated in the southwestern lower peninsula of Michigan in the center of the triangle with metropolitan areas of Grand Rapids, Lansing, and Kalamazoo/Battle Creek at its points. Numerous inland lakes, rivers, and rolling terrain mixed with upland forests characterize the County. Barry County continues to experience increasing growth pressures and the effects of growth and development are impacting the natural features and local quality of life.



The Barry County Parks and Recreation Plan will address needs for the 16 townships within the County, covering approximately 516 square miles:¹

- | | |
|---------------------------|--------------------------|
| Assyria Township | Johnstown Township |
| Baltimore Township | Maple Grove Township |
| Barry Township | Orangeville Township |
| Carlton Township | Prairieville Township |
| Castleton Township | Rutland Charter Township |
| Hastings Charter Township | Thornapple Township |
| Hope Township | Woodland Township |
| Irving Township | Yankee Springs Township |

The City of Hastings is the only city in the County and is the most urbanized area. The villages of Freeport, Middleville, Nashville, and Woodland are located in the north half of the County. The County also features many unincorporated communities, including Cloverdale, Delton, and Dowling.

The County is home to the Middleville and Barry State Game Areas. These areas provide lands for wildlife, recreation, and timber resources and are located in Hope, Irving, Orangeville, Rutland Charter, Thornapple, and Yankee Springs Townships.

Population

The study of population growth trends and changing indicators, such as age, education, income, and employment, is important in developing an understanding of the County’s recreational needs. The 2010 U.S. Census indicates a population in Barry County of 58,943. The U.S. Census estimates a population of 60,586 as of July 2, 2019.

Since the census has not been completed since 2010, the following table was used in the 2014 plan. Per the U.S. Census Bureau estimate of 2017. The population is not growing as estimated. The following table illustrates the particular areas of the County that have the highest population and the highest rate of population growth. This is useful in attempting to forecast the likely areas of future growth. The townships that experienced the highest rates of growth between 2000 and 2010 were Irving, Rutland Charter, and Thornapple Townships, all located in the northwest portion of the County.

Barry County Population Forecast

Township	1990 Population	2000 Population	2010 Population	2015* Estimate	2020* Estimate
Assyria	1799	1912	1984	2098	2164
Baltimore	1701	1845	1855	2089	2178
Barry	3300	3489	3372	3797	3906
Carlton	2069	2331	2337	2802	2980
Castleton	3380	3475	3456	3624	3674
Hastings, City	6549	7095	7299	8020	8354
Hastings Charter	2826	2930	2944	3095	3152
Hope	2883	3283	3217	4015	4293
Irving	1903	2682	3245	4689	5649
Johnstown	2932	3067	3005	3284	3359
Maple Grove	1401	1471	1588	1584	1624
Orangeville	2910	3321	3304	4075	4363
Prairieville	3409	3175	3390	2859	2761
Rutland Charter	2801	3646	3967	5557	6396
Thornapple	5226	6685	7879	9893	11,274
Woodland	2021	2129	2045	2304	2366
Yankee Springs	2947	4219	4056	7582	9219
	50,057	56,755	58,943	73,384	79,731

With 60,506 people in 2017, and 107 people per square mile, Barry County was the 33rd most populated county in the state of Michigan out of 83 counties. In 2017, the median household income of Barry County residents was \$57,312, with 8.8% of Barry County residents living in poverty.

In 2017 the median age of Barry County residents was 42.6 years. The state is growing older as well, with a median age of 39.3 years. The following was taken from the 2016 census. 17% of Barry County residents is age 65 or older, up from one in eight since the 2010 census. About 50% of the population falls in the 20 to 59 years age group, although a decrease from the 2000 census, it still shows a need for family orientated recreational facilities. School age children age 5 to 19 make up approximately 20% of the population of Barry County. This number is down one percent from the 2010 census of 21% of the total population.

In terms of ethnicity, Barry County is a very homogeneously a Caucasian community. The provision of recreational opportunities also needs to accommodate users with disabilities. The 2017 estimated population data for individuals in Barry County with disabilities under the age of 65 is 8.6%. This same report shows 18.1% of the population are age 65 or older.

Climate

According to the Midwestern Regional Climate Center (MRCC), which averaged annual climatic conditions between 1971 and 2001, in January, temperatures in the County range from an average low of 13 degrees Fahrenheit to an average high of 30 degrees Fahrenheit. These temperatures, along with an average of 57 inches of snowfall annually, are conducive to many wintertime activities such as cross country skiing, snowmobiling, and ice fishing.

In July, the average low temperature of 58 degrees Fahrenheit and average high of 82 degrees Fahrenheit makes for a pleasant and comfortable environment for fishing, golfing, hiking and many other outdoor summer activities. The average annual rainfall for the County is 35 inches.

Lakes and Rivers

Defining characteristics of the County are the abundance of water, farmland, and rolling terrain. Inland lakes, such as Gun Lake, Pine Lake, Upper and Lower Crooked Lake, Wall Lake, Long Lake, Cloverdale Lake, Wilkinson Lake, Algonquin Lake, and nearly 250 smaller lakes are found in the western portion of the County offering excellent recreational, residential, and wildlife opportunities. In the eastern portion of the County there are fewer and smaller lakes, which include Fine Lake, Thornapple Lake, Long Lake, Middle Lake, Leach Lake, and Jordan Lake.

Gun Lake

Gun Lake, one of the larger inland lakes in Michigan's Lower Peninsula, is located in Yankee Springs and Orangeville Townships in Barry County, and in Wayland and Martin Townships of Allegan County. The lake is 2,680 acres in size with approximately 17.8 miles of shoreline and an additional 1.4 miles of island shoreline.

The Gun Lake Watershed encompasses 30 square miles and is in the Kalamazoo River Basin, which drains into Lake Michigan. Eight lakes, including Payne, Long, Hall, and Fawn, drain into Gun Lake, and the outlet is the Gun River, which is a designated trout stream for most of its length. The Hall Lake inlet feeds three walleye rearing ponds on the east shore of the lake.

Gun Lake is divided into an east and west basin, with the west basin is almost uniformly shallow and has a maximum depth of 5 feet, with the exception of Robin's Bay and Pickerel Cove being 34 and 25 feet deep, respectively. Depths of the east basin vary greatly and reach up to 65 feet.² Fish species in the lake include bluegill, bass, walleye, sunfish, crappie, bullheads, musky, perch, and others. Like many lakes in Michigan, the lake has very heavy recreational boating traffic in the summer between Memorial Day and Labor Day.

Deep Lake and Hall Lake are also located in the Yankee Springs Recreation Area. Deep Lake is a 32.4-acre lake that reaches depths up to 35 feet. Other lakes in the Yankee Springs Recreation Area include Baker Lake, Chief Noonday Lake, McDonald Lake, Williams Lake, and Long Lake.

Thornapple River

The Thornapple River is a predominate feature in Barry County. Today, the riverfront offers excellent recreational destinations, residential locations, and wildlife habitat.

Thornapple River originates in eastern Eaton County and meanders west into Barry County. It enters the County in the Village of Nashville and flows westward through Castleton and Hastings Townships. Thornapple Lake, a natural lake formed from inlets that include the Thornapple River, Highbank Creek, and Mud Creek, is approximately 409 acres and reaches to depths up to 30 feet. The Thornapple River continues westward into the City of Hastings, creating an attractive amenity through the urban area. The River then flows through Rutland Charter, Irving, and Thornapple Townships and into the Village of Middleville. There are over 48 different types of fish species, including large and small mouth bass, bluegill, trout, catfish, walleye, and perch, in the Thornapple River

illustrating a healthy and clean river.

Watersheds

The Grand River and Kalamazoo River Watersheds are the two regional watersheds in Barry County. The Thornapple River Watershed, a sub-basin of the Grand, encompasses approximately 75% of Barry County.

The Thornapple River Watershed begins in Eaton County, extends into Barry and Ionia, and then enters the Grand River in the Village Ada in Kent County. A small portion of the Watershed enters into Leighton Township in Allegan. The Watershed covers 876 square miles and includes 227 lakes and 741 total river miles. Land in 14 of the 16 townships in Barry County is part of the Thornapple River Watershed.

Some of the major tributaries of the Thornapple within Barry County are Cedar Creek, Butler Creek, Mud Creek, Fall Creek, High Bank Creek, Podunk Creek, Hill Creek, Bassett Creek, and Duncan Lake Creek; the Coldwater River, Little Thornapple River, Algonquin Lake Outlet and Quaker Brook.

The Kalamazoo River Watershed drains 2,020 square miles of land in Allegan, Van Buren, Kalamazoo, Calhoun, Barry, Eaton, Hillsdale, and Jackson Counties. Two sub-watersheds of the Kalamazoo, the Gun River Watershed to the west, and the Battle Creek River Watershed to the south, cover approximately a quarter of the County, including most of Assyria, Barry, Orangeville and Prairieville Townships.

Wetlands

The wetlands in Barry County are dispersed and are primarily associated with low-lying areas and drainages. Wetlands play a critical role in regulating the movement of water within watersheds. Wetlands are characterized by water saturation in the root zone, or above the soil surface, for a certain amount of time during the year. The fluctuation of the water table above and below the soil surface is unique to each wetland type.

Wetlands store precipitation and surface water and then slowly release the water in associated water resources, ground water, and the atmosphere. They help maintain the level of the water table and may serve as filters for sediments and organic matter. They may also serve as a sink to catch water, or transform nutrients, organic compounds, metals, and components of organic matter. Wetlands have the ability to impact levels of nitrogen, phosphorous, carbon, sulfur, and various metals. Without them, water quality decreases, areas are prone to flash flooding, and habitat for specialized plants and animals is reduced.

Land Cover

COMPARISON OF CONSOLIDATED LAND COVER 1978-1994

Acres

Consolidated Land Cover Category	1978	1994	Change	% Change
Water	12,007	12,052	45	0.4%
Wetlands	28,884	29,846	963	3.3%
Forest	103,855	102,033	(1,823)	-1.8%
Open Land	31,054	30,811	(243)	-0.8%

The above Table provides a comparison of the existing land cover based on the most recent (albeit thirteen years old) land cover information with the previous state-wide land cover mapping done by MIRIS.

Barry County Parks and Recreation Master Plan 2019-2023

3. Administrative Structure



SECTION 3 ADMINISTRATIVE STRUCTURE

The parks and recreation of Barry County are under the guidance of two advisory boards. The Charlton Park Village and Museum Board (CPB) and the Parks & Recreation Board (PRB) were created by the Barry County Board of Commissioners on March 27, 2007 under authority of 1917 PA 156, MCL 123.51 *et seq.* These Boards replaced the Barry County Parks and Recreation Commission created by the Barry County Board of Commissioners in 1967. This change was in response to public comment and was intended to better serve the recreation needs of the County. The CPB and the PRB have such powers and responsibilities as are expressly set forth by the legislature and those fairly implied.

The CPB & PRB are agencies of the County and are under the general control of the County Board of Commissioners. The Board of Commissioners may make rules and regulations for the CPB & PRB, either at the request of these Boards or at its own discretion.

The powers and duties of the CPB & PRB are as specified in Public Act 156.

Charlton Park Village and Museum Board

The CPB has custody, control, and management of Historic Charlton Park and adjoining properties. Responsibilities include operation, long-range planning, approval of museum acquisitions, and preparation of an annual budget and approval of budget expenditures. The CPB meets on the second Monday of each month at Charlton Park.

The CPB is designed to receive input from community members representing a wide variety of interests. The Charlton Park Board consists of nine (9) members each possessing voting privileges. There are six (6) citizen at large positions, one (1) representative from the Charlton Park Gas & Steam Club, one (1) from the Charlton Park Foundation and one (1) Barry County Commissioner. Each term of service is three years.

Parks & Recreation Board

The PRB has custody, control, and management of all other real and personal property acquired by the County for public parks, preserves, parkways, playgrounds, recreation centers, wildlife areas, land reserved for flood conditions for impounding runoff water, and other conservation or recreation purposes. The primary function of the PRB is the operation of McKeown Bridge Park and the Paul Henry - Thornapple Trail. Responsibilities include long-range planning, preparation of an annual budget and approval of budget expenditures.

The PRB is composed of a variety of community members representing a wide variety of interests. There are twelve (12) voting members with staggered three-year terms, and a number of non-voting, ex-officio members. Six (6) of the Board members are drawn from a list of designated Stakeholder groups, five (5) are public-at-large members, and one (1) Barry County Commissioner. The Barry County Commissioner is appointed annually.

Current Funding Sources and Expenses Charlton Park Board

Charlton Park's operating budget is partially funded by a county-wide special millage that went into effect in 1987 and was renewed in 1992, 1996, 2007, 2010, 2016. The current .2266 mills will expire in 2023. Generally, funds from the millage make up approximately 70% of the operating budget. Another source of annual revenue is admission fees for educational programming and special events. These fees account for approximately 30% of the operating revenue. Other revenue sources include the Charlton Park Foundation, grants, facility rentals, donations, and concessions. Historic Charlton Park also benefitted from 2,298 hours of volunteer time in 2016 which supported educational programs, special events, collections, Gas & Steam Engine club, fund-raising activities, and park maintenance. The estimated value of volunteer time for 2016 is \$49,058 (hrs. x \$21.36 per/hr). Overall, Charlton Park's revenue is relatively stable with increases anticipated only through the attraction of additional grant funds and special programming.

The annual expense budget for Charlton Park is also fairly stable, with approximately \$20,000 annually (24,342 in 2016) earmarked for capital outlay in the Historic Village and Recreation Area. In 2016, \$15,707 in capital outlay came from the Charlton Park Foundation, which annually selects historic village and artifact collections focused projects to support.

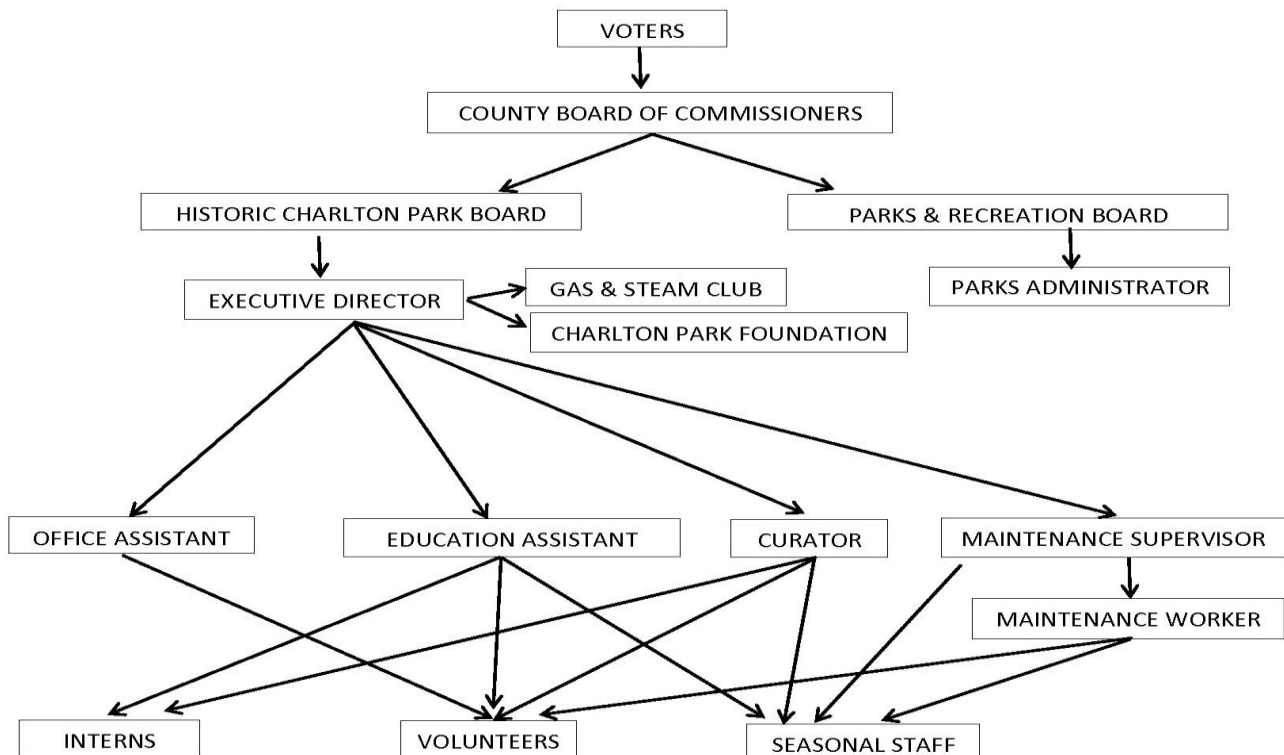
Funding for park maintenance, operations, and supplies falls under several line-items in the budget and totaled approximately \$173,225 in non- personnel expenses for 2016. Within the non-personnel expenses the three largest expenses comes from building maintenance, utilities, and special events.

Current Funding Sources and Expenses Parks & Recreation Board

Parks and Recreation revenue sources include an annual appropriation from the Barry County Board of Commissioners, with funding for special projects through grants and sponsorships/donations. Staff support is provided by a part-time administrator. The County Board appropriation in 2018 was \$58,140 and in 2019 \$63,621. Park and Recreation volunteers donate an average of 1,000 hours per year supporting parks and park programs with a value of \$21,360 (hours x \$21.36 per/hr).

Organizational Chart

Barry County Parks / Charlton Park Organizational Chart 2018



Parks and Recreation Board Policies and Procedures

The CPB and the PRB Policy Statement and Goals were established in 2007 and updated in 2013 with the update of the Barry County Parks and Recreation Plan. Their primary purpose is to expand on PA 156 and interpret this act in relation to the governance of Charlton Park and Barry County Park, respectfully. Goals for each policy provide CPB and PRB with direction regarding park development, land acquisition, fees, donations, law enforcement, and relationships with other agencies.

Charlton Park Budgets

Financial resources and security have been instrumental in the continued success of Historic Charlton Park. Voter approval of the dedicated operational millage for Charlton Park was at nearly 60% in 2010 and is currently assessed at .2266 mills due to rollback reductions from the original .2500 mills. However, even with a tremendous level of community support the CPB continues to work toward diversifying and exploring other revenue streams, partnerships, and donations. Currently, the CPB receives no general fund revenues for operations or expenditures toward the maintenance and upkeep of the Park.

Moving forward, the CPB will work toward including the following considerations as part of the comprehensive funding/revenue strategies for Charlton Park:

- Continued renewal of the original 1/4 mill for the maintenance and operational needs of Charlton Park in 2024.
- Continued emphasis on user fees and rental fees where applicable and appropriate.
- Continued development of partnerships with the private sector and other units of government.
- Securing federal and state grant dollars when applicable.
- Continued support toward assisting the Charlton Park Foundation in their efforts to seek donations for long-term stability.

- Seek out County General Fund Dollars as they become available and ensure an understanding of the need for those additional support dollars.

**HISTORIC CHARLTON PARK
FY 2019 BUDGET**

Account Title	Adopted 2019 Budget
PERSONNEL EXPENDITURES	\$355,072
OPERATIONAL EXPENDITURES	\$197,211
CAPITAL EXPENDITURES	\$29,000
TOTAL BUDGET	\$581,283

Parks and Recreation Budgets

As noted earlier, the County parks and recreation efforts outside of Charlton Park, led by the PRB, are funded nearly entirely by the Board of Commissioners through General Fund Dollars. The Parks and Recreation Board has no staff and the budget is minimal. For the structure to be sustainable, the PRB believes the County must evaluate the current structure and address the level of support given to County parks and recreational efforts to develop a more feasible, long-term structure that ensures this aspect of quality of life in Barry County is addressed.

250 Park & Recreation Fund
751 PARK

Expenditure Budget
2019
ADOPTED

751-704-000	PERMANENT SALARIES	11,700.00
751-715-000	EMPLOYERS SHARE FICA	896.00
751-719-050	UNEMPLOYMENT	40.00
751-719-050	W/COMP CLAIM APPROPRIATION	68.00
751-729-000	POSTAGE	275.00
751-730-000	PRINTING	2,000.00
751-810-000	SPECIAL PROJECTS	500.00
751-816-000	CONTRACTUAL SERVICES	20,000.00
751-901-000	ADVERTISING	1,000.00
751-921-000	UTILITIES	450.00
751-957-000	EMPLOYEE TRAINING	2,000.00
751-979-000	CAPITAL OUTLAY/YARD & BUILDING	<u>24,692.00</u>
	Park & Recreation Fund TOTAL	63,621.00

Barry County Parks and Recreation Master Plan 2019-2023

4. Recreation Inventory



SECTION 4 RECREATION INVENTORY

In order to determine the recreational needs for Barry County, an analysis of the existing facilities was undertaken. The intent of the analysis is to provide a clear evaluation of the strengths and weaknesses of the existing recreational opportunities the County has to offer its citizens. The inventory is based on information provided by County staff and site inspections carried out by MCSA Group as part of the planning process.

COUNTY PARK AND OPEN SPACE FACILITIES

Barry County owns and operates three (3) County Parks, for a total of 430 acres of recreational land. In addition, the county owns 7 miles of non-motorized trails. Other recreation opportunities include one (1) State Recreation Area, two trail systems, 5 City Parks (Hastings) and 8 Village Parks (Middleville). Surrounding communities includes parks in the Village of Nashville and Prairieville Township as well as Orangeville, Yankee Springs, Hope, Irving and Thornapple Township and Village of Woodland, and thirteen (13) public and private school sites provide public or quasi-public recreational facilities in the county.

NEIGHBORHOOD PARKS

A neighborhood park is the basic unit of the park system and typically serves a residential area of $\frac{1}{4}$ to $\frac{1}{2}$ mile distance. A size of 5-10 acres is considered optimal for this type of park. The focus is on informal active and passive recreational activities, such as field games, court games, playground equipment, and picnicking. The County has no neighborhood parks but surrounding communities fill that need.

In the City of Hastings there are three neighborhood parks; First Ward Park, Second Ward Park and Bob King Park provide additional playground and picnic facilities and a skate park. A new splash pad and stage provide entertainment in the City's downtown.

The Village of Middleville offers eight recreational sites. Lions Spring Park is the Villages' largest facility, comprising about 24 acres of land and offering a baseball/softball diamond, disc golf course, picnic shelter, play equipment, and natural area. Crane Road Ball Fields provides three ball fields for recreational programming. Calvin Hill Park is a traditional neighborhood park with a basketball court, playground equipment and skate park, while Sesquicentennial Park offers picnic facilities beside the Thornapple River. The Village also supports a canoe portage on the river and the Paul Henry - Thornapple Trailhead and Park. The newest park is Wildwood Trails Park which is a 20-acre park with 1.45 miles of rustic walking trails and a recently added mountain bike trail.

PARK ACCESSIBILITY ASSESSMENT

An accessibility assessment was undertaken for each of the County's parks using the ranking system recommended by the Michigan DNR. Improvements needed to bring the parks in line with the Americans with Disabilities Act Accessibility Guidelines (ADAAG) are included in the five-year Action Program.

The ranking system used is as follows:

- 1 = none of the facilities/park areas meet accessibility guidelines
- 2 = some of the facilities/park areas meet accessibility guidelines
- 3= most of the facilities/park areas meet accessibility guidelines
- 4 = the entire park meets accessibility guidelines
- 5 = the entire park was developed/renovated using the principals of universal design

McKeown Bridge Park

McKeown Road

23 acres

McKeown Bridge Park is located southeast of Hastings on the Thornapple River, and managed by the Parks and Recreation Board. The McKeown Bridge Park utilizes approximately 23 acres of a 98-acre County parcel which also houses the Barry County-owned Thornapple Manor medical care facility, County Emergency Management Services and 40 acres of farm land. This Park underwent significant improvements completed in 2010 with assistance from a Michigan Natural Resources Trust Fund grant. Facilities include a refurbished historic bridge, shade shelter, canoe launch, two accessible fishing decks, riverside boardwalk, trails, vault toilet, parking, and picnic facilities. The Paul Henry - Thornapple Trail crosses east/west through the center of the County land, south of Thornapple Manor.

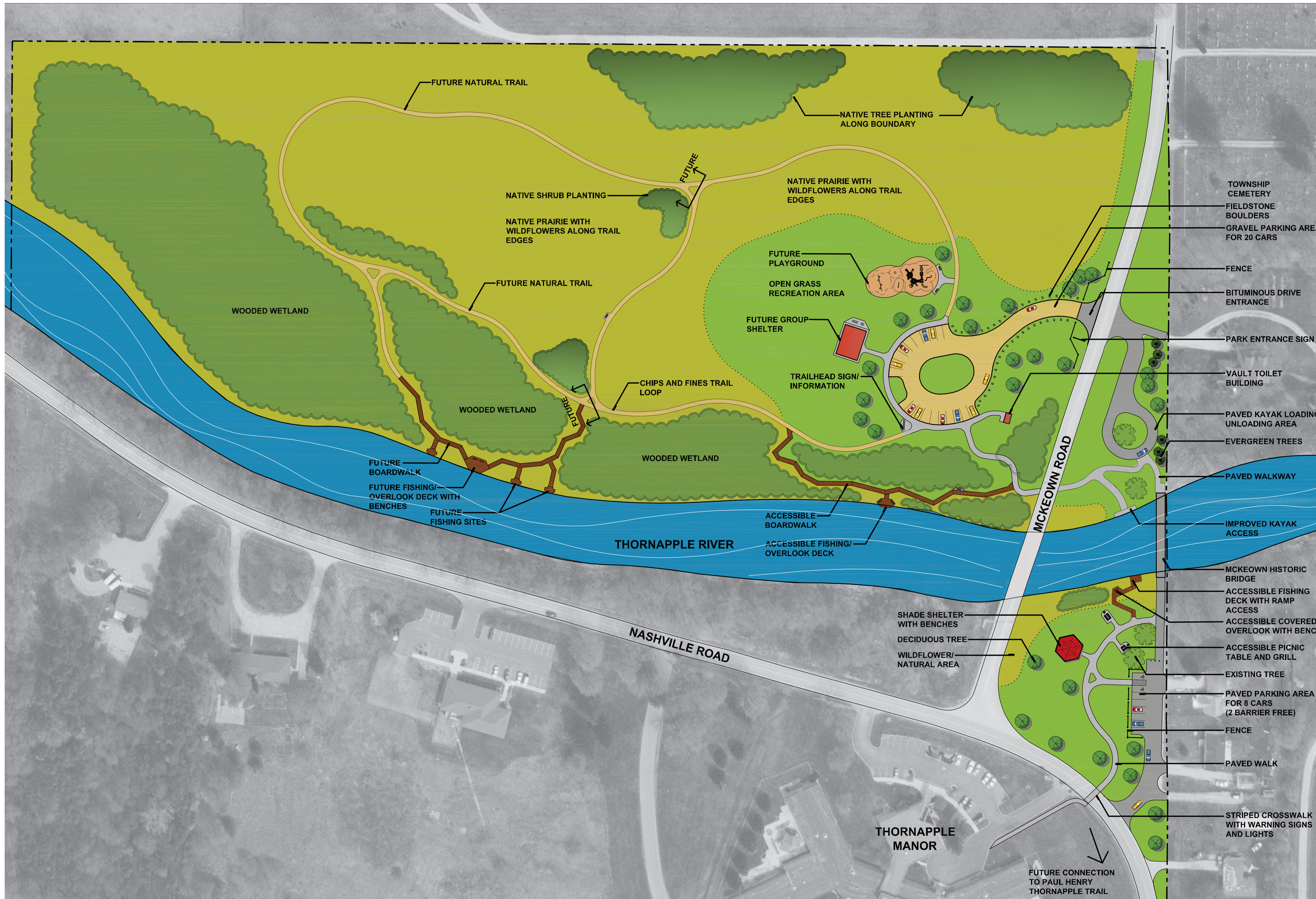
Accessibility Rating: 3

Accessibility Improvements:

- Provide accessible route to restroom building
- Reinstall accessible material to allow for adequate compaction
- Install hard surface barrier-free parking spaces

Condition: Improvements to the park were not properly executed and maintained.





FUTURE IMPROVEMENTS

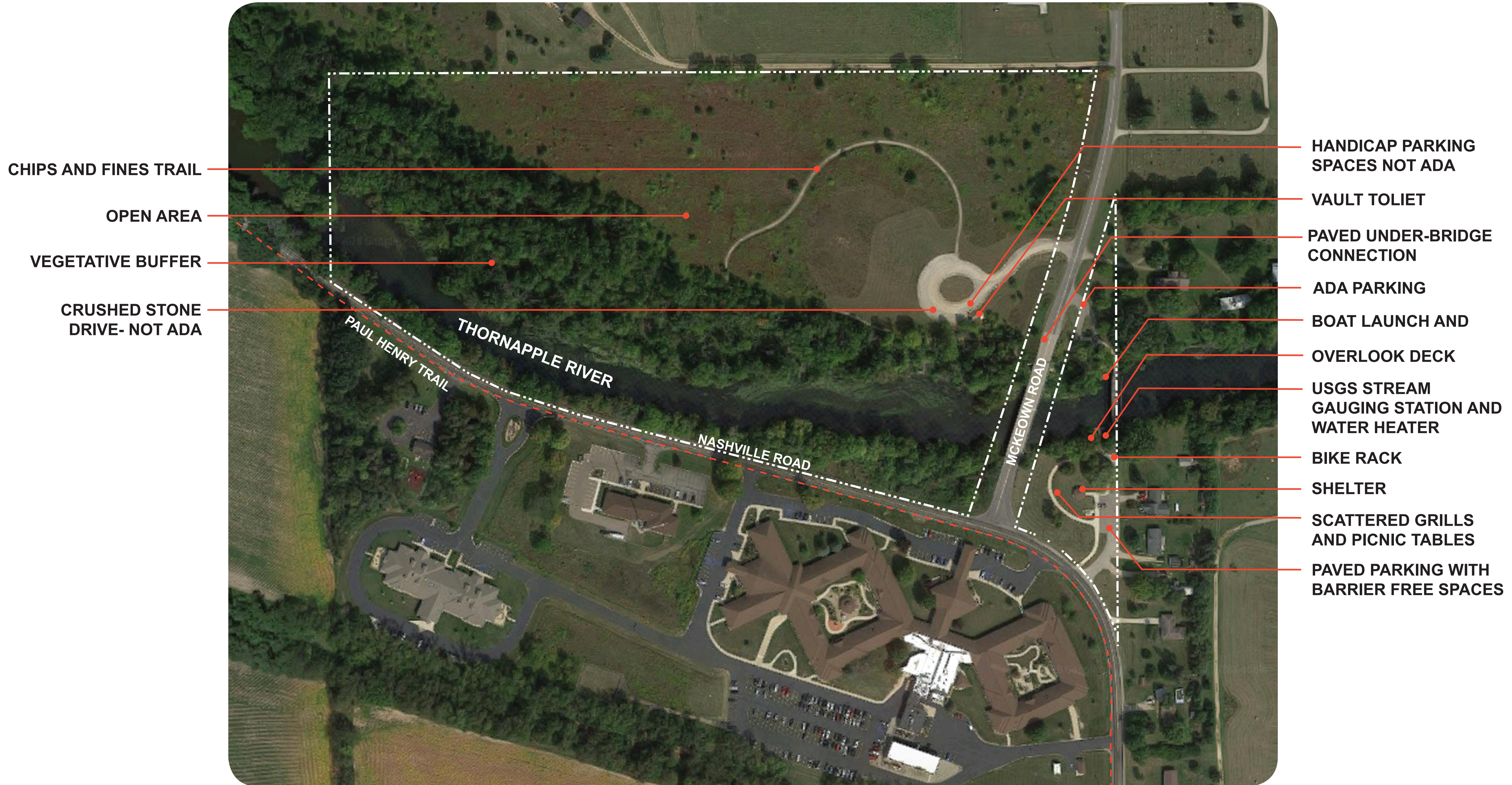
- RELOCATE EXISTING LAUNCH AND REPLACE WITH FISHING PIER.
- MAKE CURRENT PARK HANDICAP ACCESSIBLE. ADD RIVERBOAT / KAYAK LAUNCH ON THE NORTH SIDE OF THE THORNAPPLE RIVER JUST WEST OF MCKEOWN ROAD.
- ADD "RIVER TRAIL" SIGNAGE
- PROVIDE ADDITIONAL PARKING ADJACENT TO EXISTING PARKING.
- ADD ADDITIONAL FISHING OPPORTUNITIES ON NORTH SIDE OF THORNAPPLE RIVER.

**MCKEOWN BRIDGE PARK-
PARKS & RECREATION PLAN UPDATE
BARRY COUNTY, MICHIGAN**

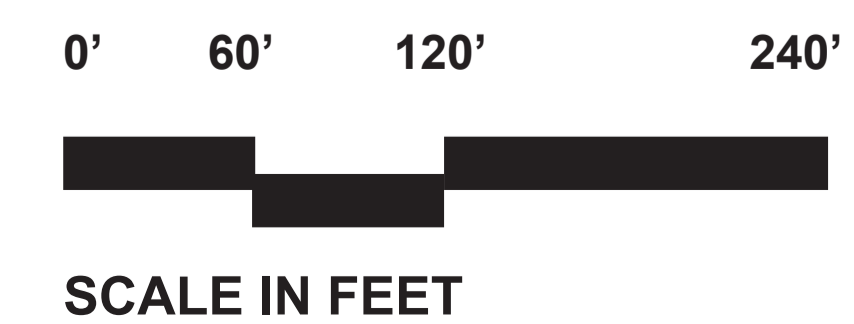


DATE
10.30.2018
PROJECT NO.
2049





MCKEOWN BRIDGE PARK- EXISTING CONDITIONS
PARKS & RECREATION PLAN UPDATE
BARRY COUNTY, MICHIGAN

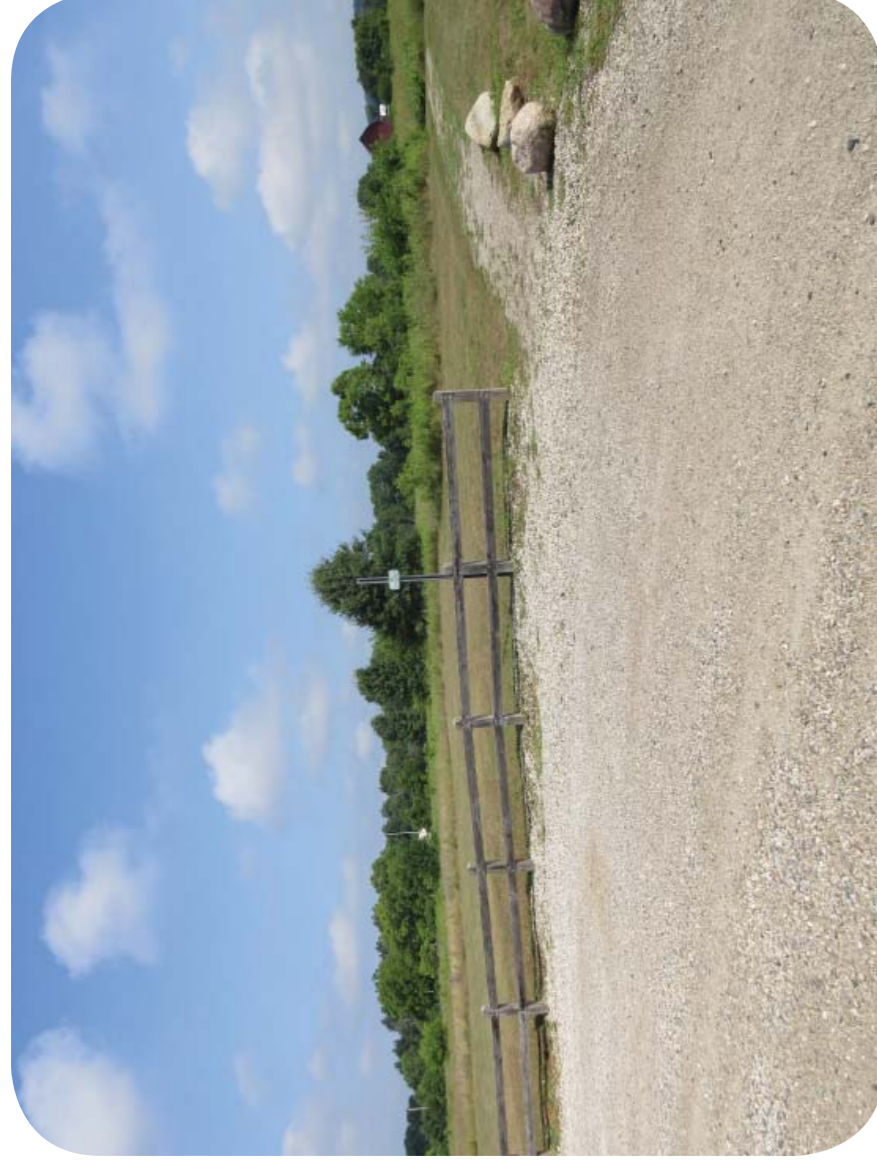


DATE
10.30.2018
PROJECT NO.
2049





GRAVEL PARKING WITH BOULDER BARRIERS.



PARKING SPACES ARE NOT BARRIER FREE MATERIAL, SIGN IS MISSING.



ROUTE TO RESTROOM BUILDING DOES NOT MEET ADA STANDARDS.



ACCESSIBLE ROUTE DOES NOT MEET ADA STANDARDS FOR MATERIALS AND GRADING.



CONCRETE WALKWAY UNDERNEATH MCKEOWN ROAD.



CRUSHED GRAVEL PATH CONNECTION TO CONCRETE SIDEWALK DOES NOT MEET ADA STANDARDS.



SOIL ERODING AT SIDES AND BASE OF THE CANOE AND KAYAK LAUNCH.



OVERLOOK DECK ON SOUTH SIDE OF THORNAPPLE RIVER.



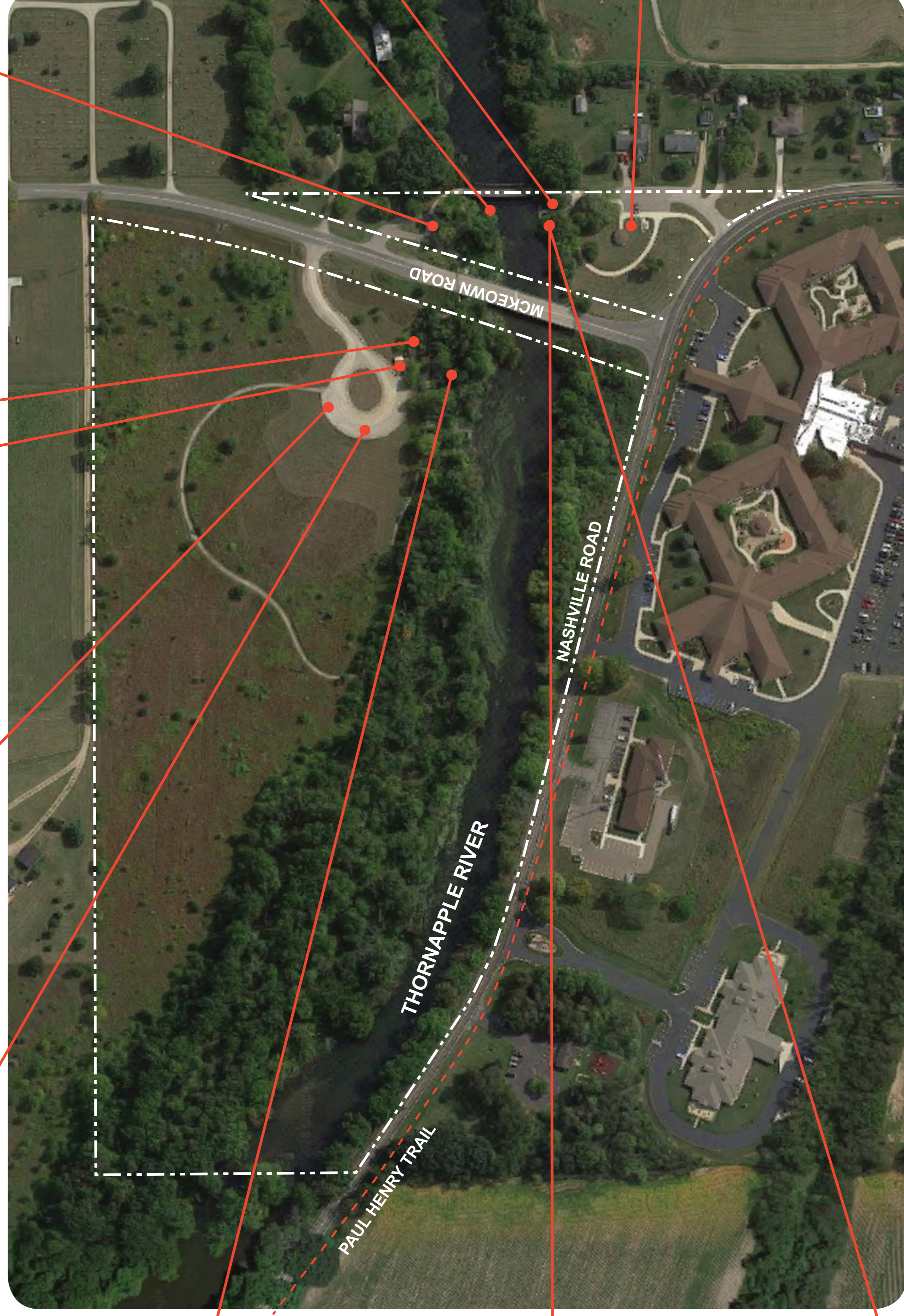
USGS STREAM GAUGING STATION AND SHED.



OVERLOOK DECK AND BOARDWALK.



BARRIER FREE PARKING SPACES AND SHELTER.



DATE
9.20.2018
PROJECT NO.
2049

MCKEOWN BRIDGE PARK- EXISTING CONDITIONS PARKS & RECREATION PLAN UPDATE BARRY COUNTY, MICHIGAN



Charlton Park Recreation Area

2545 S. Charlton Park Rd.

322 acres

There are no paved barrier-free parking spaces within the recreation area. None of the facilities offered in the Park, including the pavilion, picnic shelters, shade shelters at the beach or the restrooms, are served by an accessible route. The modern restrooms at the beach area meet ADA requirements inside, but have no connecting walkway. The vault toilets at the boat launch do not meet barrier-free requirements. The play equipment on site is limited and does not have connecting walkways or barrier-free surfacing. A number of barrier-free picnic tables are provided in the pavilion, but more accessible tables and grills with connecting walkways should be provided throughout the site. Other than the roadways, there are no paved trails within the recreation area and access to the waterfront for persons with disabilities is very limited. A transition plate is needed on the boat launch skid pier to meet accessibility guidelines.

Accessibility Rating: 2

Accessibility Improvements:

- Add paved accessible crushed stone walkways to access all elements within the park
- Add paved barrier-free parking spaces and accessible routes to all elements within the park

Condition: Recreation areas lack adequate accessibility

Charlton Park Village and Museum

2545 S. Charlton Park Rd.

322 acres

An American with Disabilities Act Compliance Assessment was completed for Historic Charlton Park Village and Museum. Of primary concern in this study were the approaches and entryways to village buildings.

Accessibility Rating: 2



HISTORIC VILLAGE BUILDINGS AND SHOPS.



BOARDWALK AT THE CITY BANK, CONCESSIONS, AND SHOPPING AREA BORDERING THE VILLAGE GREEN. RESTROOMS DO NOT MEET ADA STANDARDS.



LEE SCHOOL LANE ROAD WITH VILLAGE GREEN LEADING TO HISTORIC VILLAGE BUILDINGS.



MIXED USE OPEN AREA AND OVERFLOW PARKING.



GRASS BALLFIELD AND BACKSTOP AREA.



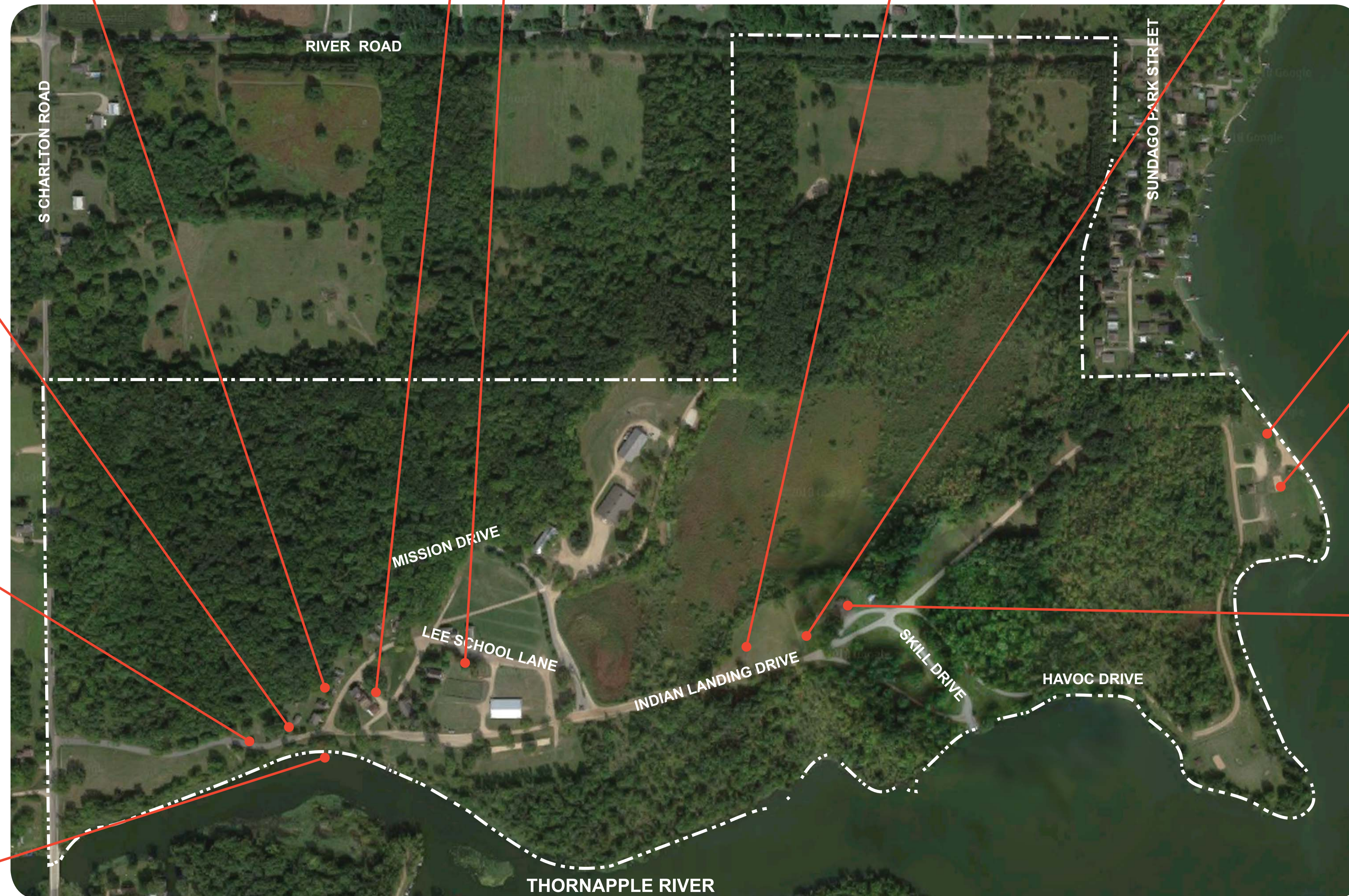
PAVED PEDESTRIAN WALKWAY TO VILLAGE IS NOT ADA ACCESSIBLE.



ENTRYWAY TO THE HISTORIC VILLAGE WITH VEHICLE CONTROL BOLLARDS.



THREE LANE BOAT LAUNCH AREA WITH SKID PIER.



PARKING AREA AND PICNIC SHELTER OVERLOOKING THORNAPPLE RIVER.



SAND VOLLEYBALL COURTS ADJACENT TO THORNAPPLE RIVER.



PICNIC SHELTER AND PAVILLION WITH RESTROOMS.

CHARLTON PARK -EXISTING CONDITIONS PARKS & RECREATION PLAN UPDATE BARRY COUNTY, MICHIGAN

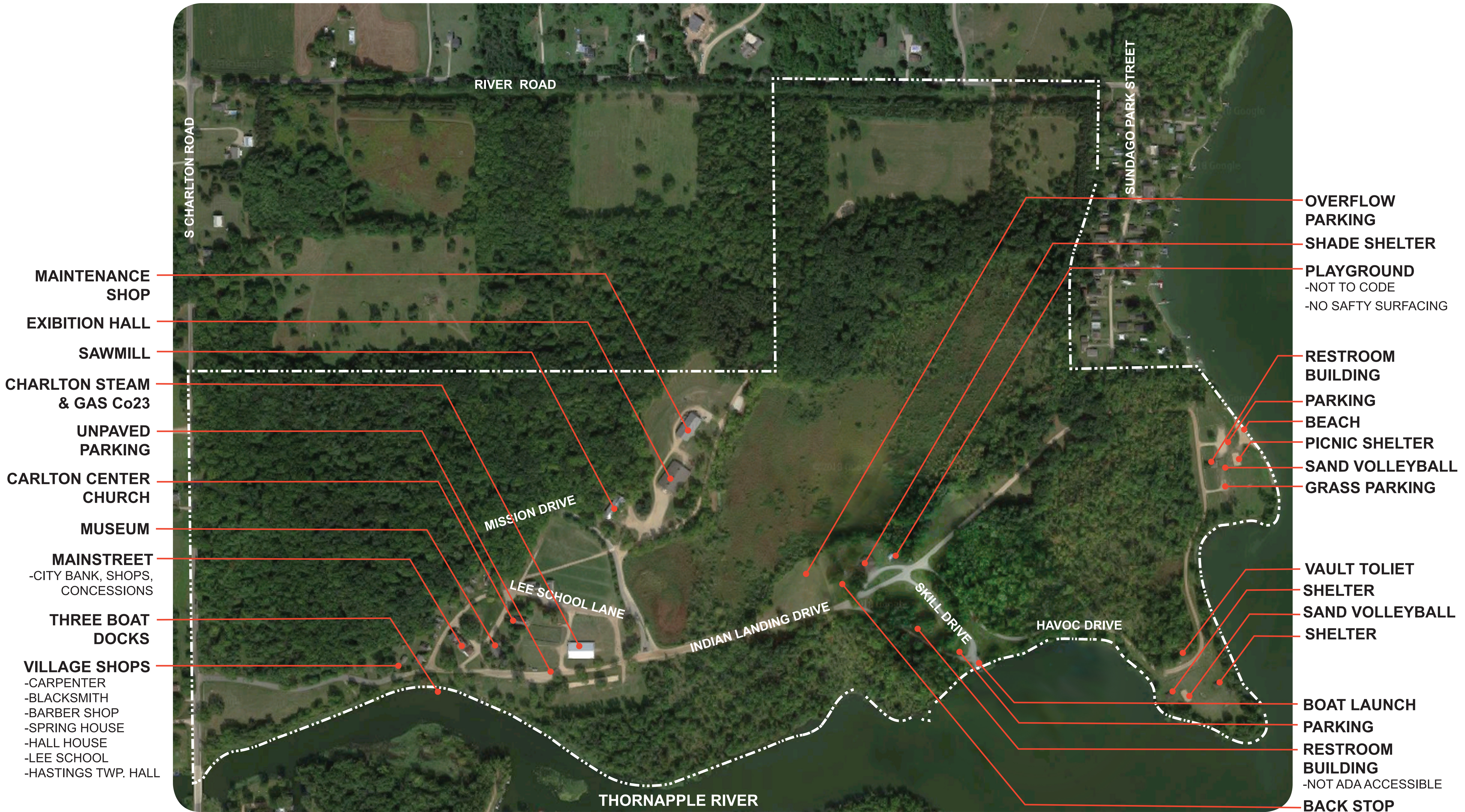


NORTH

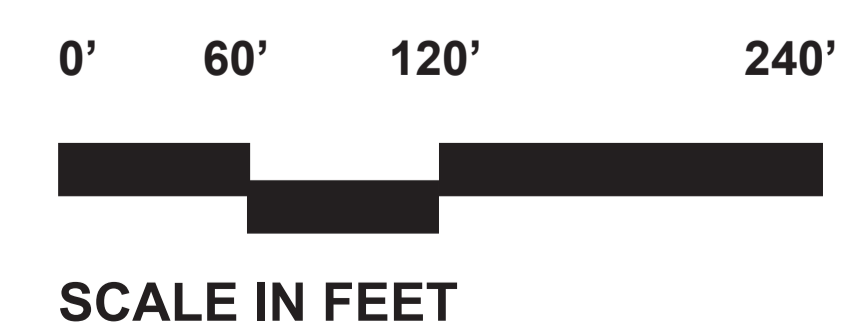


DATE
9.20.2018
PROJECT NO.
2049





**CHARLTON PARK -EXISTING CONDITIONS
PARKS & RECREATION PLAN UPDATE
BARRY COUNTY, MICHIGAN**



DATE
9.20.2018
PROJECT NO.
2049



Paul Henry – Thornapple Trail

7 Miles

The County-owned portions of this Trail are currently undeveloped and there are no facilities meeting accessibility guidelines. The long-term vision for this Trail is to provide accessible surfacing and facilities for all to enjoy. Paving of 3 miles of the Trail in the Village of Nashville is included in the Action Program

Accessibility Rating: 1

Accessibility Improvements:

- Add trailhead with paved barrier-free parking spaces to access trail
- Pave trail with hard surface or barrier-free crushed stone to provide accessible trail

Condition: Undeveloped

DNR RECREATION GRANT INVENTORY

In 2010, Barry County received a grant from the Michigan Natural Resources Trust Fund for the development of McKeown Park Bridge. Improvements included a new park entrance and parking area, vault toilet building, canoe launch, shade shelter, barrier-free fishing decks, boardwalks, trails, and site amenities. The facilities are well used and maintained in good condition.

Barry County has been fortunate to receive four grants from the Michigan Department of Natural Resources for development at Charlton Park Recreation Area. These grants were received in 1969, 1973, 1977 and 1991 and helped with the development of most of the Park's facilities, including gravel access drive and parking areas, boat launch, pavilion, swimming beach, restrooms, picnic facilities and playground equipment, and additional property for inclusion in the total Park acreage. The facilities have been well used and are generally in good condition given their age. Some accessibility improvements are needed to bring the facilities in line with current ADA guidelines.

OTHER RECREATION FACILITIES

STATE OF MICHIGAN FACILITIES

Yankee Springs Recreation Area, a 5,200-acre property located on the central western edge of Barry County, and the adjacent 13,000-acre Barry State Game Area provide diverse recreation opportunities. Campgrounds on Gun Lake, the County's main sports lake, and Deep Lake provide 320 modern and 100 rustic sites. Gun Lake, Deep Lake and seven other lakes within these state holdings provide ample fishing, boating, and water sports opportunities. Miles of trails, including a portion of the North Country National Scenic Trail, are available for hiking, wildlife viewing, and horseback riding. Mountain bikers utilize 12 miles of rough terrain biking trails. There is also an equestrian camp with 17 rustic sites and equestrian trails. Special trail features include the Devil's Soup Bowl, Graves Hill Overlook, and The Pines. Winter sports facilities include 10 miles of cross-country ski trails, snowmobile trails, and lake access for ice fishing. Additional accommodation is provided by cabins at the historic Chief Noonday Outdoor Center.

Both the State Game Area and part of the Recreation Area are open for hunting waterfowl, small game, and white-tailed deer.

The Middleville State Game Area, located in the County's north-west quadrant, provides an additional 4,000 acres of hunting, picnicking, and wildlife viewing area.

TRAILS

In addition to the trail system in Yankee Springs Recreation Area, the County features two long distance/ regional trails.

North Country National Scenic Trail

The North Country Trail (NCT) is a public-private partnership hiking trail that stretches 4,500 miles from North Dakota to the New York/Vermont border. The NCT enters Barry County north of Irving, travels south using portions of the Paul Henry - Thornapple Trail, then dissects the Yankee Springs Recreation Area and Barry State Game Area. Once south of the recreation area, it becomes mostly a road walk from Keller Road, through Prairieville, over

to the Kellogg Biological Station. The local Trail is maintained by the Chief Noonday Chapter.

Paul Henry - Thornapple Trail

The Paul Henry - Thornapple Trail follows the scenic Thornapple River from 44th Street and Kalamazoo Avenue in Grand Rapids to Middleville, Hastings, Nashville, and Vermontville with large gaps to be acquired for a total of approximately 43 miles. Within Barry County, the Village of Middleville has the best example of what a well-managed handicap accessible trail can be, with 5.1 miles of paved trail with 550- 750 users per week during April through October. The trail is closed in November for firearm deer season.

OTHER MUNICIPALITIES

The City of Hastings provides two community parks, Tyden Park and Fish Hatchery Park. Tyden Park, an 11-acre park near the city center, provides fishing and canoe access on the Thornapple River, a paved loop trail with river overlook areas, picnic shelters, limited play equipment, a soccer field, two basketball courts, two tennis courts, and a sand volleyball court. A pedestrian bridge leads across the river to the Tyden Natural Area, which features additional riverside trails. Fish Hatchery Park provides picnic shelters, play equipment, a lighted ball diamond, basketball court, soccer field, two tennis courts, fishing ponds and horseshoe pits on a 40-acre site.

The City also features three less developed parks/open spaces. The Hastings Outdoor Recreation Area, also known as Sweezy's Pond, is a 20-acre natural area in the southwest corner of the city. Bliss Riverfront Park is located in the southeast of the City and provides 35 acres of land alongside the Thornapple River for passive recreation. Facilities include a canoe/kayak launch, trails and boardwalks along the River, and a picnic shelter. This site serves as a trailhead for the Hastings Riverwalk, a 1.6 mile paved trail running along the river corridor and former railroad bed to Tyden Park. Hammond Road Recreation Area is the City's largest recreation site covering 76 acres in the northwest corner of the City. Only a small portion of the site is currently developed for recreation with a natural trail network, known as Zhigaawin Hiking Trail and a disc golf course.

Three neighborhood parks, First Ward Park, Second Ward Park and Bob King Park provide

additional playground and picnic facilities and a skate park. A new splash pad and stage provide entertainment in the City's downtown.

The Village of Nashville and Prairieville Township also support multiple neighborhood and community parks. Orangeville, Yankee Springs, Hope, Irving, and Thornapple Townships and the Village of Woodland each have one neighborhood park.

The Barry County Municipal Recreation Inventory table on page 24 provides a complete listing of municipal park features.

Maps showing the location of municipal parks and recreation facilities can be found at the end of this section.

SCHOOL FACILITIES

In spite of its relatively small population, Barry County includes 13 private and public school systems. Only five of these encompass major portions of the County and are included in this recreation inventory. While recreational facilities at school sites are primarily intended for school use, some facilities may be used by the general public at specified times. Some outdoor facilities are left open for public use after school and team practice hours, while others must have uses scheduled through the district office. All general public use must be scheduled around school activities. A School Recreation Facilities Table is included on page 25.

SEMI-PUBLIC/PRIVATE RECREATIONAL FACILITIES

Barry Expo Center, 1350 N. M-37, Hastings.

Owned and operated by the Barry County Agricultural Society, this complex includes several barns for 4-H and County Fair use as well as a ¼ mile dirt oval track for horse, Moto-cross and car racing and an expo hall available for rent. Besides the annual County Fair, the complex also hosts a variety of events and shows throughout the year.

Community Education & Recreation Center, Hastings.

Located on the Hastings High School Campus, this facility includes a pool with scheduled lap and open swim times Monday through Saturday, and a gym and Cardio Exercise Room with morning, evening and weekend hours.

Pennock Health & Wellness Center, 1009 W. Green, Hastings.

This membership-based indoor recreation facility offers gym, pool, and fitness services open seven days a week. Programming includes aquatic fitness, spinning, conditioning, yoga, Pilates and special children's and seniors' programs.

YMCA of Barry County and Camp Algonquin, 2055 Iroquois Trail, Hastings.

YMCA of Barry County's mission is to provide opportunities for all individuals and families to participate in quality activities and programs which promote the development of physical abilities and moral and ethical behaviors based on Christian values. The YMCA provides youth sports and adult sports programs, summer playground programs and youth social programs through the City of Hastings and area schools. Camp Algonquin provides summer resident, day and High Adventure activities and provides a facility for community use.

YMCA Camp Manitou-lin, Barlow Lake, Middleville.

Serving the Grand Rapids area, 155 acre Camp Manitou-lin features fishing and water sports areas, fitness, hiking and nature study trails, volleyball, baseball, basketball and playground facilities, tennis courts and a high ropes course.

Battle Creek Outdoor Education Center, 10160 S. M-37 Hwy. Delton.

This 176-acre facility owned by the Battle Creek Public Schools provides school camping for 5th and 6th graders from approximately 40 regional schools. Recreation opportunities include swimming, boating, and canoeing on Clear Lake, two miles of woods and prairie hiking trails, a high-ropes course and the oldest continuously operating School Garden Program in the U.S. (est. 1943). This 33-building private facility sleeps 160 and provides full food service. It is available for conferences on weekends and during the summer.

Boys and Girls Club (of Kalamazoo) Outdoor Experience camp.

This 200 acre summer residential camp is available for rent by outside groups. It has several sleeping cabins, swimming pool, ample open area, and an indoor gymnasium.

Circle Pines Center, Mullen Road, Delton.

Circle Pines Center is a member-owned and run non-profit cooperative organization featuring a children's summer camp and year round retreat and conference center with

programs for families, children and adults. The co-op owns 294 acres of land with trails for hiking and cross-country skiing, rolling hills, hardwood and pine forests, meadows and frontage on Stewart Lake.

Long Lake Outdoor Center

The Long Lake Outdoor Center was built by the Civil Conservation Corps in 1938 and is listed in the National Register of Historic Places. The center is located on over 300 acres in Yankee Springs Recreation Area and is run by a private concessionaire. It features a lodge, bathhouse and cabins that cater to a capacity of one hundred twenty campers. The camp includes a baseball diamond, volleyball court, horseshoe pits and a shuffleboard court.

Pierce Cedar Creek Institute, 701 W. Cloverdale Rd., Hastings.

Set on 661 acres, Pierce Cedar Creek Institute, an environmental education center, provides visitors with a unique exposure to a rare blend of diverse habitats including wetlands, forests, marshes, streams, lakes, and prairies. Visitors can explore over seven miles of nature trails, participate in programs and classes, or stop by the Visitor Center. Hiking trails are open from dawn to dusk. The Visitor Center is open Monday through Friday, 9 a.m. to 5 p.m. and for special events on the weekend.

Kellogg Biological Station, 3700 E. Gull Lake Drive, Hickory Corners.

The 4000 acre Lux Arbor facility, which extends into Kalamazoo County, includes Kellogg Farm, Kellogg Bird Sanctuary and the 32 acre Eagle Heights Conference facility. The full service conference center offers lodging, meeting rooms and meals. The Farm and Bird Sanctuary are open for self-guided and public tours at any time year round. Group tours are available by arrangement at either facility.

Gun Lake Tract, Marsh Road, Orangeville Township.

This 360 Acre conservation area is owned and managed by the Ruffed Grouse Society. The Gun Lake Tract is open daily, free of charge, for hiking, bird watching, tree and wildlife identification. Guided group tours and educational programming are available through the Barry Conservation District. Hunting rights belong to the Ruffed Grouse Society. The property features many managed natural communities, including upland and lowland woodlands, a peat bog, emergent wetlands and grasslands.

Michigan Audubon Otis Sanctuary.

This 120 acre wildlife sanctuary borders Glass Creek and has a canoe access, a cabin available for rental to members and hiking trails.

Michigan Audubon Warner Sanctuary.

This heavily wooded, 100 acre wildlife sanctuary hosts one of Barry County's last remaining stands of old growth forest.

Maher Sanctuary.

Owned by Grand Rapids Audubon, Inc., this 76.8 acre sanctuary is located at the southwest corner of 108th ST SE and Wood School Road. It has a mix of habitats, including frontage on Crane Creek. It has a parking area and hiking trail.

Southwest Michigan Land Conservancy Carter Lake Preserve.

This 80 acre preserve has a hiking trail.

Southwest Michigan Land Conservancy Bauer Natural Area.

A modest, 20-acre preserve that borders Highbank Creek. It has a hiking trail and is heavily wooded.

Fish Lake Wildlife Area.

Part of the Barry State Game Area, Fish Lake hosts an unimproved boat launch.

Barry Conservation Club, W. Green St., Hastings.

Features a clubhouse, horseshoe pits and shooting ranges.

Flying Horseshoe Ranch, S. Yankee Springs Road, Middleville.

Horseback riding in the Yankee Springs Recreation Area. Open from April through October.

Gilmore Classic Car Club Museum, 6865 Hickory Road, Delton.

This 80+ acre site houses one of the 10 best large classic car collections on display in America. In addition, the CCC also hosts a variety of themed auto shows on the premises.

Bernard Historical Museum, 7135 Delton Rd., Delton.

This museum complex includes an 1873 schoolhouse, a 1900's country store, a blacksmith shop and over 25,000 artifacts.

Historic Bowens Mills, 55 Briggs Rd., Middleville, MI 49333.

Privately owned and operated, this 19 acre historical park features an 1864 water powered grist and cider mill. Other historical attractions on site are a plank house, Victorian house, a post and beam barn, covered bridge, and water wheel, and other historic buildings. Special events are hosted at the park throughout the year.

Moo-ville Quality Creamery, 5875 S. M-66, Nashville, MI 49073.

Family owned dairy farm, petting zoo and ice cream parlor offering tours of the farm and dairy operation.

Campgrounds

Barry County is home to many campgrounds serving those drawn to the area for its numerous outdoor recreation opportunities. Aside from the state campgrounds at Yankee Springs and the organizational campgrounds listed above, there are 1661 sites in 23 licensed private campgrounds in the county.

Golf Courses

There are six golf courses within Barry County. Yankee Springs has 27 holes. The Legacy, Mullenhurst, Gun Ridge, and Ponderosa each have 18 holes.

Canoe Liveries

Three canoe liveries operate on the Thornapple River in Barry County. U-Rent-Em Canoes is located in Hastings Township; Whispering Waters Canoe and Kayak Rental is located in Hastings Township; Indian Valley Campground and Canoe Livery is located in Thornapple Township.

Municipal Recreation Facilities Table:

Barry County Municipal Recreation Inventory

Municipal Parks	Municipality	# Acres	Parking	Picnic Area	Gills	Shelter	Water (Drinking)	Pit Toilets	Flush Toilets	Water			Trails			Active							Special															
										Boat Launch	Boat Rental	Fishing	Swimming	Bike Trail	Cross Country Skiing	Fitness Trail	Hiking Trail	Nature Study	Snowmobiling	Volleyball	# Ball Diamonds	# Lighted Ball Diamonds	Basketball	Football	Soccer	Ice Skating	Playground Equipment	Skate park	# Tennis Courts	Special Features								
Historic Charlton Park	Barry County	332	X	X	23	3	X	7	26	1	X	X	X	X		X		X															Lake Access: Village/Museum					
McKeown Bridge Park	Barry County	22	X	X	X	1		1			X																					River frontage. Fishing deck						
Bliss Riverfront Park	City of Hastings	13.6	X	X	X	1				1	X	X																				River frontage. Trailhead						
Fish Hatchery Park	City of Hastings	30	X	X	X	2	X				X																					2 Fish Ponds						
Bob King Park	City of Hastings	3.8	X	X	X	1	X																									Wooden Play Structure						
Sweezy's Pond	City of Hastings	22									X																					Sweezy's Pond						
Second Ward Park	City of Hastings	1	X																																			
Third Ward Park	City of Hastings	2	X																																			
Tyden Park	City of Hastings	28.7	X	X	X	2	X				X																						2 Riverfront					
Zhigaawin Hiking Trail	City of Hastings	97.5	X																														Disk Golf					
Riverwalk	City of Hastings	1.6m	X																														Paved non-motorized trail					
Freepoint Softball Park	Freepoint	10	X	X	X	1																																
Johnstown Township Hall	Johnstown Twp.	8.3	X																																			
Calvin Hill Park	Middleville	1.5																																				
Crane Road Baseball Fields	Middleville	21.3	X																																			
Paul Henry Thornapple Trail	Middleville	5 m	X																																			
Stage Coach Park	Middleville	1	X																																			
Sesquicentennial Park	Middleville	0.3	X																																			
Spring Park	Middleville	25	X	X	X	1	X																															
Central Park	Nashville	1	X																																			
Putnam Park	Nashville	6	X	X	X	1	X																															
Riverside Park	Nashville	6	X	X																																		
Coldwater Park	Barry Twp.	1	X																																			
Wm. Smith Lions Park	Barry Twp.	0.5	X	X	X	1																																
Cloverdale Lake Park	Hope Twp.		X	X	1		X																															
Orangeville Twp. Mini-Park	Orangeville Twp.	20	X	X	X	1	X																															
Center Street Park	Prairieville Twp.	1	X																																			
Gull Lake Park	Prairieville Twp.	3	X	X	X	X	X																															
Lower Crooked Lake Access	Prairieville Twp.	2	X																																			
Prairieville Municipal Park	Prairieville Twp.	5	X	X	X	1	X																															
Pine Lake Recreation Area	Prairieville Twp.	18	X	X	X	1	X																															
Parker Road Park	Prairieville Twp.	1	X																																			
Upper Crooked Lake Access	Prairieville Twp.	1	X																																			
Woodland Twp. Memorial Pk.	Woodland Twp.	7	X	X	X	1	X																															
Yankee Springs Twp. Park	Yankee Springs Twp.	10	X	X	X	1																																
TOTALS		686	25	22	22	22			7	0	14	3	1	1	2	12	7	0	9	17	3	15	0	2	1	20	3	10										

School Facility	Location	# Acres	Parking	Picnic Area	Grills	Shelter	Fitness Trail	Hiking Trail	Nature Study	Volleyball	Soccer Fields	Baseball Diamonds	Lighted Baseball Diamonds	Basketball	Football	Soccer	Gym/Multi Purpose Rm.	Playground Equipment	Tennis Courts	All-weather track	Indoor Pool	Special Features	
Barry County Christian School	Hastings Twp.	6	X									1				1		X					
Delton-Kellogg	Delton	50	X									7	1	2	2	1	4	X	4				
Hastings High School	Hastings	30	X							2	2			2	1	1	1		8	1	1	Community Recreation Center	
Hastings Middle School	Hastings	8	X									2		1		2	X						
Central Elementary	Hastings		X													1	X						
Northeastern Elementary	Hastings	10	X									1	X			3	1	X					
Pleasantview Elementary	Hastings	8	X									1				1	1	X					
Southeastern Elementary	Hastings	14	X									1				2	1	X					
Star Elementary	Hastings	20	X									1				1	1	X					
Lakewood High School	Lake Odessa	40	X							3	3			2	1	1			6	1			
Lakewood Middle School	Lake Odessa	4	X									1				1							
Woodland Elementary	Woodland	5.5	X									2	X			1	X						
Maple Valley High School	Vermontville	15	X									3		1		1			5				
Kellogg Elementary School	Nashville	1	X										X			1	X						
Fuller St. Elementary School	Nashville	6	X											1	1	1	X						Lighted football/soccerfield
Thornapple Kellogg H.S.	Middleville	39	X							1	1			2	1	1			4		1		
Thornapple Kellogg M.S.	Middleville	10	X								1	X			2	2			4				
McFall Elementary	Middleville	28	X							1		X				1	X		6				
West Elementary	Middleville	11	X													1	X						
Page Elementary	Middleville	35	X								1	X				1	X						
Lee Elementary	Middleville	12.5	X								1					1	X						
TOTAL		353								7	29	1		11	15	25			37	2	2		

School Recreation Facilities Table:

LOCATION	WATERBODY	ACREAGE	TWP.	RAMP TYPE	PARKING	FEE	SITE RULES	WATERCRAFT CONTROLS
Airport Road	Thornapple River			4	10		X	
Baker Lake	Baker Lake	67	Yankee Springs	4	3			Speed restrictions
Bassett Lake	Bassett Lake	41	Yankee Springs	2	4			
Bristol Lake	Bristol Lake	140	Johnstown	2	15		X	
Carter Lake	Carter Lake	59	Rutland	3	12		X	
Charlton Park	Thornapple Lake	415	Hastings	2	31		X	
Chief Noonday Lake	Chief Noonday Lake	49	Yankee Springs	4	3	X	X	
Clear Lake	Clear Lake	186	Baltimore	2	6			
Cloverdale	Long Lake	261	Hope	2	10			
Deep Lake	Deep Lake	33	Yankee Springs	2	9	X	X	No Wake
Duncan Lake	Duncan Lake	129	Thornapple	2	15		X	
Fine Lake	Fine Lake	323	Johnstown	2	21		X	
Fish Lake	Fish Lake		Orangeville	3	5	X	X	
Hall Lake	Hall Lake	57	Yankee Springs	3	7	X	X	
Irving Road	Thornapple River		Irving	4	5		X	
Jordan Lake	Jordan Lake	417	Woodland	2	28		X	
Leach Lake	Leach Lake	107	Carlton	3	12		X	
Long Lake	Long Lake	147	Yankee Springs	3	10	X	X	
Long Lake	Long Lake	75	Johnstown	3	8			No wake 6.30pm-10am Ski restrictions
Lower Crooked Lake	Lower Crooked Lake	433	Prairieville	2	13	X	X	
Ludlow Lake	Ludlow Lake	9	Hope	4	3			
McDonald Lake	McDonald Lake	16	Yankee Springs	4	4	X	X	
Middle Lake	Middle Lake	134	Carlton	2	16		X	
Middleville	Thornapple River		Village of Middleville	4	5		X	
Otis Lake	Otis Lake	127	Rutland	4	4			
Payne Lake	Payne Lake	112	Yankee Springs	2	12	X	X	
Prairieville Twp Park	Gull Lake	2046	Prairieville	2	92	X	X	40mph speed limit
Thornapple Lake	Thornapple Lake	415	Castleton	2	15			
Upper Crooked Lake	Crooked Lake	644	Prairieville	2	18	X	X	
Williams Lake	Williams Lake	19	Yankee Springs	4	7	X	X	
Yankee Springs R.A.	Gun Lake	2046	Yankee Springs	2	49	X	X	No wake zones
Yankee Springs R.A.	Gun Lake	2046	Yankee Springs	2		X	X	No wake zones

Table:
Boat Launch

Barry County Public Lands & Recreational Facilities Map

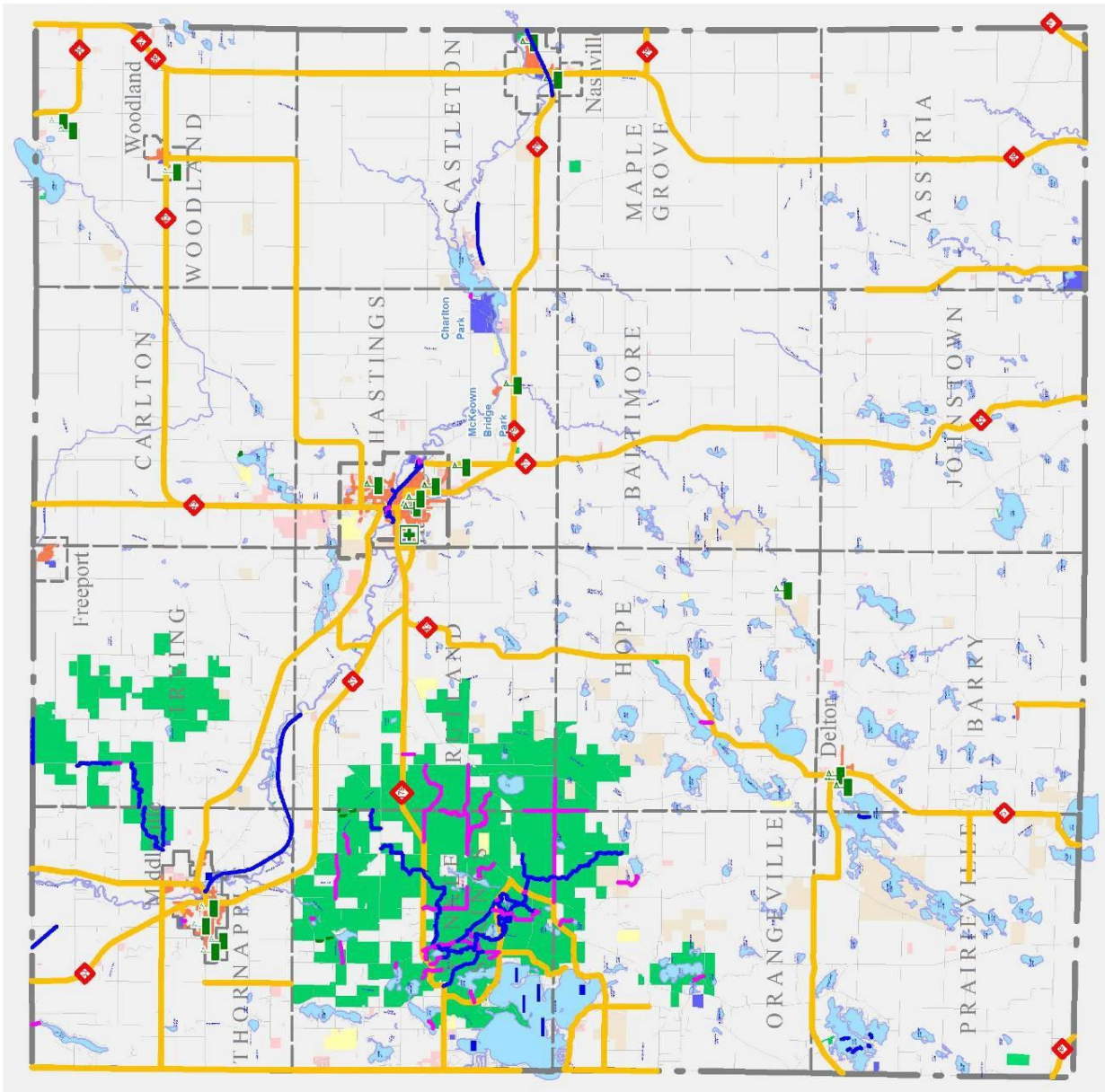
INVENTORY OF PUBLIC RECREATION LANDS IN BARRY COUNTY

LEGEND

- Trails**
Source: 911 roads
Recreation trail (purple line)
3 season road (yellow line)
- Facilities**
School (green square with cross)
Hospital (green square with cross)
- Roads with bike lanes or paved shoulders**
Source: Southwest MI Planning Comm.
Bike lanes (yellow line)
- Sidewalks**
Source: Village & City sidewalk inventories
Sidewalks (orange line)
- Township, City & Village Boundaries**
Municipal Boundaries (dashed grey line)
- Lakes & Rivers**
Hydrology (blue area)
- State & Federal Lands**
State & Federal Lands (green area)
- Conservation Reserves**
Source: SWMLC & others
Conserved lands (tan area)
- Commercial Districts**
Source: 2013 assessment roll
Commercial (pink area)
Commercial specific to recreation (yellow area)
- Parks**
Public / Quasi-public Parks (blue area)



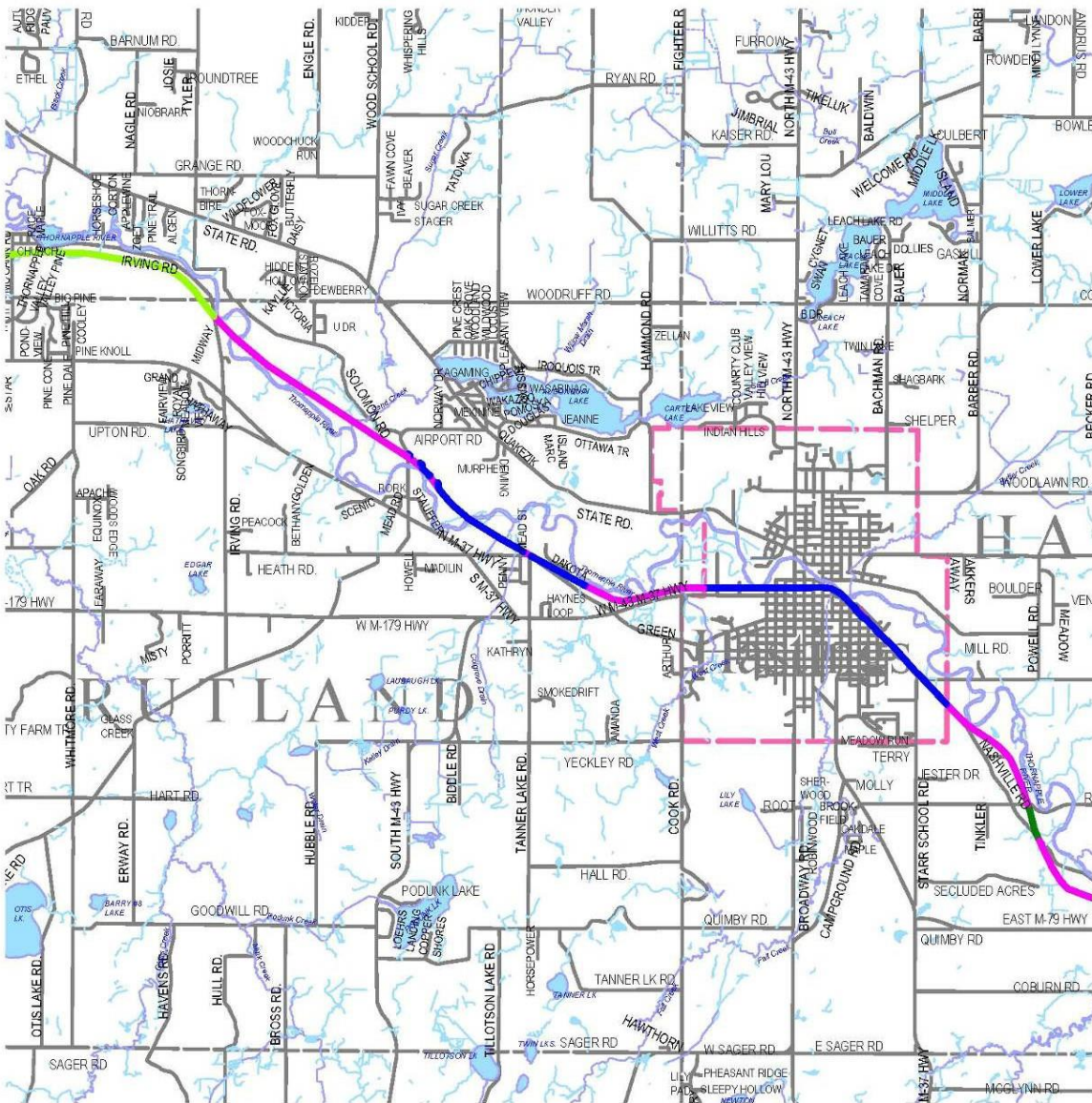
BARRY COUNTY LAND
INFORMATION SERVICE
DECEMBER 2013
SCALE 1" = 18000'



Paul Henry - Thornapple Trail Maps



MAP LOCATOR	FORMER RAILWAY OWNERSHIP AND TRAIL STATUS	- MIDDLEVILLE CORRIDOR
BARRY COUNTY, MICHIGAN	LEGEND	
		PRIVATE OWNERSHIP (CLOSED TO PUBLIC)
		VILLAGE OF MIDDLEVILLE
		RAILS TO TRAILS CONSERVANCY
		CITY OF HASTINGS
		BARRY COUNTY PAUL HENRY THORNAPPLE TRAIL PARK
		BARRY COUNTY OWNERSHIP (CLOSED TO PUBLIC BY AGREEMENT)
		 SCALE 1 INCH = 600 FT BARRY COUNTY LAND INFORMATION SERVICES JANUARY 2008



MAP LOCATOR

BARRY COUNTY,
MICHIGAN

FORMER RAILWAY OWNERSHIP AND TRAIL STATUS

- HASTINGS CORRIDOR

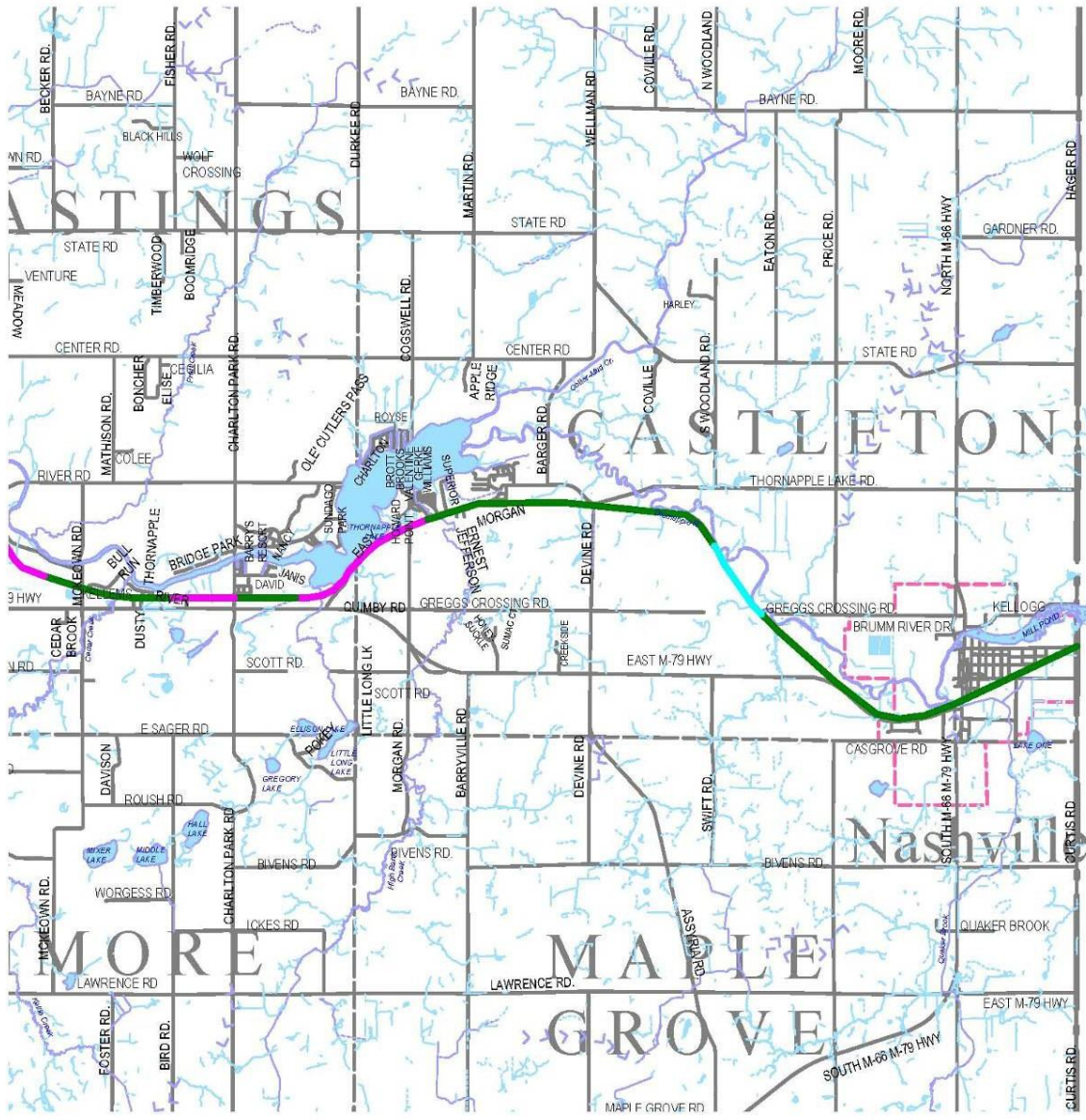
LEGEND

-  PRIVATE OWNERSHIP (CLOSED TO PUBLIC)
-  VILLAGE OF MIDDLEVILLE
-  RAILS TO TRAILS CONSERVANCY
-  CITY OF HASTINGS
-  BARRY COUNTY PAUL, HENRY
THORNAPPLE TRAIL PARK
-  BARRY COUNTY OWNERSHIP
(CLOSED TO PUBLIC BY AGREEMENT)



SCALE
1 INCH = 600FT

BARRY COUNTY LAND
INFORMATION SERVICES
JANUARY 2008



MAP LOCATOR

BARRY COUNTY,
MICHIGAN

FORMER RAILWAY OWNERSHIP AND TRAIL STATUS - NASHVILLE CORRIDOR

LEGEND

-  PRIVATE OWNERSHIP (CLOSED TO PUBLIC)
-  VILLAGE OF MIDDLEVILLE
-  RAILS TO TRAILS CONSERVANCY
-  CITY OF HASTINGS
-  BARRY COUNTY PAUL HENRY THORNAPPLE TRAIL PARK
-  BARRY COUNTY OWNERSHIP (CLOSED TO PUBLIC BY AGREEMENT)



SCALE
1 INCH = 6000FT
BARRY COUNTY LAND
INFORMATION SERVICES
JANUARY 2008



BARRY COUNTY 2018 EXISTING RECREATION FACILITIES

	Address	Acres/Miles *	Active Recreation													Amenities					Trails/ Natural Area			Other	
			Playground	Baseball Fields	Softball Fields	Soccer	Football	Rugby Field	Volleyball (sand)	Basketball	Tennis Court	Track	Open Play Field	Shuffleboard	Skate Park	Parking	Restroom	Concession Building	Picnic Shelter/ Pavilion	Picnic Tables/Grills	Natural Area	Natural Trail	Paved Walking/ Multi-Purpose Trail		
BARRY COUNTY PARKS																									
Historic Charlton Park	2545 S. Charlton Park Rd.	322.0	1	1	1				3																
McKeown Bridge Park	Nashville Rd.	23.0																							
Paul Henry - Thornapple Trail		7 miles																							Intermittent Locations - Non Continuous
Total		345.0	1	1	1	0	0	0	3	0	0	0	0	0	0	6	3	1	4	0	0	0	0		

* Percentage of land estimated for recreational use

Barry County Parks and Recreation Master Plan 2019-2023

5. Planning & Public Input Process



SECTION 5 PLANNING AND PUBLIC INPUT PROCESS

Recreation Planning

Recreation planning plays an important role in maintaining the quality of life in a community. If a community is to provide effective recreational opportunities, it needs to determine not only current, but also future recreation needs. Recreation planning also has important environmental implications. Green infrastructure and connected green spaces allow for the movement of wildlife, plants and people, as well as opportunities for watershed management to protect waterways, wetlands, floodplains, groundwater recharge and woodlands along rivers.

This Barry County Parks and Recreation Plan presents an evaluation of the County's recreational needs and opportunities. It considers the existing amenities in the County, the anticipated demand for additional or improved facilities, and the means for providing those facilities.

Since the adoption of the last Parks and Recreation Plan by the County in February 2014, the County has seen some significant changes in the management and administration of the County's parks and recreation. This plan is to serve as a guideline for directing the County in the operation and maintenance of existing and future facilities to meet the recreational needs of its citizen's. The plan summarizes long-term recommendations intended to guide the development of recreation opportunities, and describes an Action and Capital Improvement Program for implementation over the next five years.

Plan Process and Development

This 2019 Parks and Recreation Plan was written and developed by members of the Park and Recreation Board and the Charlton Park Board. MCSA GROUP, Inc., a park and recreation planning consultant, was hired to oversee the process and ensure the plan met with the DNR Guidelines. Representatives from both Boards met regularly between June 2018 and January 2019 for the development of this Parks and Recreation Plan. Prior to this, a Recreation Inventory Ad-hoc Committee was formed to verify and update the municipal and school recreation inventories for the County.

Criteria considered and evaluated for plan development evolved from the examination of goals and recreation standards determined through a wide variety of input sources. This information was collected from the inventory and review of existing facilities; the identification of recreation needs and deficiencies; public opinion; and future expectations.

Public input was sought by means of a public workshop held to solicit public desires and concerns regarding parks and recreation. This workshop took place at 6.00 p.m. on Tuesday, October 30, 2018 at the Barry County 911 Dispatch Center, 2600 Nashville Rd. Hastings, MI. An additional meeting was held on Wednesday, December 5, 2018 at 5:30 p.m. at the Tyden Center, 121 South Church Street, Hastings, MI. These meetings were advertised for one week prior to the event in the local press.

These meetings generated a good turnout from a wide cross-section of the population. Representatives from other municipalities within the County and interested citizens were among those making comment. Discussion was generated on a wide variety of topics.

Comments from the public meeting were incorporated as appropriate into a final draft of the Plan, which was made available to the public for 30 days commencing on January 10, 2019 to solicit further comments prior to a Public Hearing (February 26, 2019) and plan adoption. (See Appendix 3, page 64).

The Barry County Parks and Recreation Board voted to adopt the Plan and recommend adoption by the Barry County Board of Commissioners a joint meeting January 9, 2019.. The Charlton Park Village and Museum Board made a similar Resolution. Copies of both Resolutions can be found in Section 9 of this Plan.

A Public Hearing was held on January 26, 2019, during the regular scheduled Board of Commissioners meeting to consider public input regarding the new Barry County Parks & Recreation Plan. After this Hearing, a formal Resolution was made by the Barry County Board of Commissioners to adopt the Plan. A copy of this Resolution is also included in Section 9.

Barry County Parks and Recreation Master Plan 2019-2023

6. Recreation Needs and Deficiencies



SECTION 6 NEEDS ASSESSMENT

This section of the Plan identifies recreation needs determined through a variety of methods that include analysis of the Recreation Inventory, comparison to recreation standards, direct input from staff and Board Members, and comments received from members of the public. By combining these methods an accurate assessment of recreational needs and deficiencies can be made.

Facilities vs. Population

Recreational facilities in Barry County are virtually entirely held by other municipalities and school districts with a fair number in private hands. Barry County only owns Charlton Park, McKeown Bridge Park and isolated sections of the Paul Henry Thornapple Trail.

Barry County is an aging population, as evidenced by 2010 US Census data. Barry County is a “bedroom community” for Grand Rapids, Kalamazoo, Battle Creek, and Lansing, as over 75% of its residents work outside of the county. Counter that with the lack of a four year degree granting university, there is an out flux of high school graduates to work and education outside the county.

Although the 65 and older demographic is less than the state average in 2010, the 45 to 64 demographic is larger than the state average and will make Barry County’s Median age slightly higher in the next few years. Therefore, when planning new facilities, the needs of seniors should always be considered.

	Total Population	Under 18 years	18 to 24 years	25 to 44 years	45 to 64 years	65 years and over	Median age
Barry County	58,943	22.2%	8.7%	33.0%	24.3%	11.8%	41.2
Michigan	9,938,444	26.1%	9.4%	29.8%	22.4%	12.3%	38.9

Geography, Demographics, and Future Needs

Although 30% of Barry County's residents live in the northwest four townships (Irving, Rutland, Yankee Springs, and Thornapple), they are experiencing explosive growth and are projected to nearly double (88% increase) in population by 2020. Townships in the east half of the county will experience limited growth over the next twenty years. Therefore, recreational facilities will be most needed in these areas experiencing growth, as these likely will be working families with children needing ball fields and other recreational facilities. Even though the eastern side of the County is less populated, the lack of recreation facilities in this area means that they should be added as opportunities allow so that all residents are within easy reach of recreational lands.

Barry County is also surrounded by 1,192,000 people in bordering counties. As a bedroom community, we expect more in-migration in the future.

Accessibility

The Americans with Disabilities Act of 1990 requires any new builds to fully integrate accessible design so those with disabilities can use recreational facilities. Barry County's only recreational facilities, Charlton Park and McKeown Bridge, were both built before ADA went into effect but both have integrated accessibility modifications when the situation presents itself. However, the County is well aware that there is much work to be done in bringing both these facilities into full compliance in the near future. It is our goal to not only meet ADA guidelines but to provide universal accessibility at the County's facilities wherever possible.

Connectibility

Barry County's strength is that it already has green space and green corridors. Since we already have developing corridors and with the inevitable increase in transportation fuel prices, it is our vision to connect these spaces and corridors not only for recreational purposes, but for future transportation systems as well.

Green space is valued not only for its open space and benefits to wildlife, but frequently is valued due to its ability to provide clean drinking water. About 30,000 acres are held in trust by private and public entities, including the Barry State Game Area and Yankees Springs State Recreation Area. It is our intention to work to connect the green spaces and develop greenways where non-motorized transportation can use as transportation corridors.

Realizing that wetlands are valued for water resources and knowing they are slowly disappearing in Barry County due to development; we will investigate a Wetland Banking program to preserve these habitats and incorporate them into our recreational resources and greenways/green spaces.

A new program that the Barry County Park and Recreation Board will encourage is the development of a River Heritage Trail on the Thornapple River and its tributaries. A similar program is in place on the Kalamazoo and St. Joseph rivers. The river will be a recreational destination and our community will work to preserve the green space around this natural corridor while developing recreational and transportation resources.

Land Purchasing

Barry County government owns very little land. Vast areas of the County are still undeveloped and if we are to develop a good recreational system, we need to consider purchasing land for future use.

Land purchases will be planned around future needs of the County. Many park systems are successful today because of the planning and past land purchases that provide for today's parks. Communities such as Livonia and Ann Arbor had the foresight to purchase land for future use. Barry County may be in the same situation to purchase land for future use.

Charlton Park Historic Village and Museum

Historic Charlton Park was founded to serve as a reminder to present and future generations of what life was like in rural Michigan in the late 1800s. Since its meager

beginnings in 1936, the Park has slowly developed into a major educational and recreational area in southwest Michigan. However, much hard work remains before Historic Charlton Park will reach its full potential.

The needs of Historic Charlton Park are three fold: improvements to the existing infrastructure, maintenance and upkeep of the existing buildings, and improvements in the upkeep and display of the collections.

Infra-structure improvements are needed to make the facility more enjoyable by visitors and accessible to persons with disabilities. This includes the replacement of the village boardwalks using a handicap accessible design and the paving of at least some of the parks gravel driveways and parking areas. The challenge of improving accessibility while maintaining the historic integrity of the site will involve some innovative solutions.

Capital improvements are required to provide expanded space for collections storage and to stabilize and conserve existing collections. The Park must also update its computer system to facilitate inventory completion and better manage the resources entrusted to the agency.

Charlton Park Recreation Area

The current facilities in Charlton Park Recreation Area were developed primarily between 1969 and 1991 with the assistance of funding from the Michigan DNR. These facilities have been well maintained but are now showing signs of their age. In particular, the play equipment does not meet current safety guidelines and should be replaced by new equipment with barrier-free safety surfacing that allows for use by persons with disabilities.

Other accessibility improvements that are needed focus on connecting walkways between the parks facilities, increased access to the waterfront and expanded opportunities for on-shore fishing. Charlton Park features one of only four swimming beaches in the County, the others all being in the west of the County. The upkeep and maintenance of this facility is therefore important. The existing trails in the park are limited and do not relate well to the other recreation facilities, A need for family-orientated

mountain bike trails was expressed during the public input process. Charlton Park is one of the few sites in Barry County, other than Yankee Springs Recreation Area in the west, large enough to support a comprehensive trail network.

The protection and enhancement of Charlton Parks' natural resources, which include the Thornapple River and Lake, mature broadleaf woodlands and wetlands, is also important to ensure wildlife habitat is maintained for the enjoyment of future generations.

McKeown Bridge Park

McKeown Bridge is an important historical site which has been only marginally improved as a special use park. Only two acres of the site are currently developed for recreation use with 23 acres of vacant riverside woodland, scrub land and open grassland. With the lack of recreational acreage in the Barry County Parks system this land should be developed for appropriate recreational use.

This Park underwent significant improvements completed in 2010 with assistance from a Michigan Natural Resources Trust Fund grant. Facilities include a refurbished historic bridge, shade shelter, canoe launch, two accessible fishing decks, riverside boardwalk, trails, vault toilet, parking, and picnic facilities.

The 40 acre parcel south of Thornapple Manor and adjacent to East 79 is a level piece of land with good access. Since the lagoons that were on this site have been abandoned and restored, this land has potential for future development for active recreation opportunities to meet demand.

Barry County Parks and Recreation Master Plan 2019-2023

7. Goals and Objectives



SECTION 7

GOALS AND OBJECTIVES

Barry County Parks and Recreation Board has developed the following goals and objectives to guide the management and development of recreation opportunities in the County. These Goals are consistent with those laid out in the Barry County Master Plan. The goals are long-range in nature and intended to be broad in scope and flexible enough to accommodate future change. The objectives are short-range in nature and intended to direct specific development decisions to be made in the next five years. Goals and objectives are meant to guide the intent of the actions to be taken but flexible enough to reflect changing attitudes and opportunities. A degree of flexibility is essential for the County to be responsive to its citizens.

Barry County Parks and Recreation Board (PRB) Mission Statement:

PROMOTE BARRY COUNTY AS A RECREATION DESTINATION BY PROVIDING AND SUPPORTING RECREATIONAL OPPORTUNITIES THAT ENHANCE THE QUALITY OF LIFE FOR ALL RESIDENTS AND VISITORS.

Barry County Park and Recreation Board Goals and Objectives

GOAL 1

Develop and maintain a Recreation Plan to ensure that funds are spent efficiently, short-term and long-term goals are met, and to ensure eligibility for State and Federal grant programs.

Objective:

1. Evaluate progress against plan annually to ensure plan is utilized and progress is made.

GOAL 2

Provide a geographically balanced system of park and recreation facilities in the County, in coordination with local municipalities, recreation authorities, and schools, to provide opportunities for all.

Objectives:

1. Target areas that are deficient in recreation opportunities or are experiencing population growth for land acquisition or development.
2. Assist other recreation providers in the County to develop and maintain public recreation facilities.

GOAL 3

Continue to maintain and enhance existing park and recreation facilities to provide high quality recreational and aesthetic experience at all County parks and facilities.

Objectives:

1. Improve routine maintenance of McKeown Bridge Park, including implementation of an inspection schedule to determine any repairs etc. that may be required.
2. Continue maintenance of the Paul Henry - Thornapple Trail through mowing and vegetation control and as needed to improve and enhance its public usability.
3. Encourage and facilitate volunteer efforts to assist with maintenance at County owned park and recreation facilities.

GOAL 4

Expand the diversity of recreational facilities available to offer year-round opportunities for individuals of all ages and abilities to meet current and future demands.

Objectives:

1. Continue the development of McKeown Bridge Park in line with the master plan.
2. Strive towards providing universal accessibility at all recreational facilities.
3. Work towards development of a sports complex, including ball fields and soccer fields and supporting facilities, if demand develops within the community.

GOAL 5

Develop and encourage unique recreational experiences to attract visitors/tourists to Barry County.

Objectives:

1. Create a Thornapple River Water Trail to encourage canoe and kayak use and maintain navigational passage from Nashville to 108th Street.
2. Promote recreation events in Barry County.
3. Enhance the County website to fully inform residents and visitors of the recreation opportunities in the County.
4. Develop a County-Wide Birding Trail to highlight the many birding opportunities available throughout the area

GOAL 6

Promote and develop linear parks and trails to provide safe and enjoyable recreational experiences and non-motorized transportation, linking residential areas, parks, and recreational lands.

Objectives:

1. Work in collaboration with others to ensure the continuity and connectivity of the Paul Henry - Thornapple Trail across the County.
2. Make the best possible use of grant opportunities for property acquisition and development.
3. Actively pursue acquisitions of land or permanent easements as they become available.

GOAL 7

Seek to acquire, preserve and protect land of special interest, including historic, natural, scenic or environmentally sensitive areas for appropriate public use and enjoyment and habitat protection.

Objectives:

1. Protect and maintain the Historic McKeown Bridge and provide improved interpretation describing its historical significance.
2. Protect and enhance riverfront and wetland properties to protect water quality and provide educational opportunities.
3. Demonstrate best management techniques in all park development, management, and improvement to set an example for County residents.
4. Implement habitat improvements at McKeown Bridge Park and provide interpretation to promote enjoyment and provide education.

GOAL 8

Expand the availability of public waterfront access and fishing/boating opportunities on lakes and rivers within the County.

Objectives:

1. Continue to improve river access at McKeown Bridge Park in line with the master plan.
2. Look for opportunities to expand waterfront property under Barry County ownership or control.
3. In collaboration with partners, provide additional facilities in targeted locations along the Thornapple River for development of a water trail (ie. launch ramps, rest areas, bathrooms etc.)

GOAL 9

Encourage adopting a unified administrative structure that recognizes each county owned park as part of a County Park System and Develop the financial support needed for that systems operation and management.

Charlton Park Village and Museum Board (CPB) Mission Statement

The following mission statement was prepared in the early 1990's to provide the Historic Charlton Park Board with a sense of direction for current and future focus and purpose. This

mission has not changed over the past 20 plus years, and the Board continues to utilize this mission to create the foundation for moving forward into the future.

TO PROVIDE EDUCATIONAL AND RECREATIONAL OPPORTUNITIES, THROUGH THE COLLECTION, PRESERVATION AND DEMONSTRATION OF EARLY RURAL MICHIGAN LIFE, ARTIFACTS AND BUILDINGS, AND THE MANAGEMENT OF NATURAL AND RECREATIONAL AREAS.

Charlton Park Village and Museum Board Goals and Objectives

Utilizing the mission statement above, the Historic Charlton Park Board has identified five primary goals and outlined objectives to work toward meeting those goals. These goals and objectives are directly tied to the Historic Charlton Park action plan and identified needs for the park.

GOAL 1:

Preserve and manage artifacts, collections, and buildings that demonstrate early rural Michigan life and cultural history.

Objectives:

1. Identify objects and artifacts within collections not yet inventoried and seek to ensure proper historical data regarding collections artifacts.
2. Provide a high level of stewardship for the collections utilizing the MAP assessment, and best management practices.
3. Development of a collections plan to guide future acquisitions.

GOAL 2:

Provide high quality outdoor natural-resource centered recreational opportunities for county residents and visitors.

Objectives:

1. Provide natural resource-based activities that meet identified goals and provide public utilization of the park.

2. Develop standards of operation for high quality maintenance and operation of recreational area and open space lands.
3. Provide natural resources-based activities that are available to all individuals regardless of ability (comply with Americans with Disabilities Act).

GOAL 3:

Promote understanding of natural and cultural resources of Historic Charlton Park and the rich history of Barry County and Michigan.

Objectives:

1. Promote Historic Charlton Park programs, events, and facilities through advertising and public relations campaign.
2. Promote best practices management and stewardship of natural and cultural resources within Charlton Park.
3. Promote and provide buildings and facilities that reflect rural Michigan history and natural resources within our recreation area.

GOAL 4:

Provide and continue developing educational programming, events, and facilities that promote and enhance appreciation for history, natural resources, and family entertainment.

Objectives:

1. Provide educational programming that promotes an understanding of our rural history from the late 1800's and early 1900's.
2. Provide educational programming that focuses on natural resources and understanding our outdoor environment.
3. Provide educational programming, events, and facilities for people of all ages and abilities.
4. Host events that provide family entertainment are educational, and/or heighten an appreciation for the natural environment and cultural history.

GOAL 5:

Cultivate and sustain a financial standing for short- and long-term operational needs, maintenance, development and growth.

Objectives:

1. Develop and cultivate partnerships which help realize identified goals, needs, and objectives.
2. Sustain dedicated millage to assist with operational needs of the park.
3. Capitalize on grant programs and funds to complete the identified goals.
 - a. Utilize user fees where appropriate.

Barry County Parks and Recreation Master Plan 2019-2023

8. Action Program and Capital Improvement Schedule



SECTION 8

ACTION PROGRAM AND CAPITAL IMPROVEMENT SCHEDULE

ACTION PROGRAM

The Action Program and Capital Improvement Schedule of Barry County's Park and Recreation Plan states the proposed course of development or improvement that will be taken over the next five years. The Goals and Objectives, from the previous section, serve as guidelines for the development of the Action Program. The Capital Improvement Schedule which follows will focus on the needs identified in the Action Program and will project potential expenditures for the five-year action period on a year-by-year basis. The five-year period will begin in 2019 and extend through 2023. This time period may not be sufficient to accomplish all of the goals and objectives but begins to prioritize those projects that may be achievable within the initial five years.

The Action Program focuses on reduction of deficiencies and expansion and improvements of facilities in a manner that not only meets current needs, but also diversifies the type and quality of recreational opportunities within the County. The Parks and Recreation Plan identifies these needs in general terms in the Recreation Needs and Deficiencies section; the Action Plan describes specific actions to be taken to address these needs; and the Capital Improvement Schedule specifically itemizes those projects which will be most feasible during the next five years. The proposed schedule will allow for flexibility as funds become available and as opportunities are presented. The following actions are comprehensive and may require more than five years to complete.

Paul Henry – Thornapple Trail County Park

Included are improvements for paving of trail from the county line in Nashville to Greggs Crossing Road including the Nashville Trailhead (3 Miles); Refurbishment of the Quimby, Morgan and Greggs Crossing Bridges. County will continue to work towards gaining a

contiguous trail route by gaining easements across private property, property acquisition or by studying alternative routes.

McKeown Bridge Park

Included are improvements including the relocation of the existing canoe/ kayak launch to the West side of McKeown Road; Additional fishing opportunities, Water Trail signage; Parking Improvements and Redevelopment of Picnic Shelter.

Charlton Park Recreation Area

Overall Master Plan to include: Rustic and Modern Camping and Existing Park Improvements; Improvements to include: Playground Improvements/ Replacement; East and West Shelter Replacement; Beach & Restroom Replacement.

Charlton Park Historic Village

Improvements to include: Boardwalk Improvements/ Replacement; Village Site Lighting (Phase one).

Thornapple River Watertrail

Included are a complete plan for Thornapple River Water trail Wayfinding Signage located within the County Right of Way

Barry County Birding Trail

Included is wayfinding signage at birding locations

Park Land Acquisition

County will work toward acquiring additional park land as it becomes available targeting areas that are deficient in recreation facilities, property adjacent to existing parks and waterfront/natural areas.

CAPITAL IMPROVEMENT SCHEDULE

As stated in the Action Program, improvements and development will occur as funds and opportunities evolve. Assistance will be solicited from all available sources and will include

both physical and financial support. Local businesses, service organizations, land developers, governmental agencies and the school district will be solicited for monetary and material support. The County will also seek funding assistance from all available sources such as trusts, charitable foundations, and all Federal and State funding programs.

The following schedule is a breakdown of the anticipated projects and projected funding for the next five years. A range of prices is given for a number of items as the scope of work is yet to be determined. Changes in the program may occur if projected funding levels increase or decrease, but it is anticipated that the changes would be related more to adjustments in the time schedule rather than specific projects.

Other Funds (*) as indicated in the following table include:

Michigan Natural Resources Trust Fund (MNRTF);

Michigan Land and Water Conservation Fund (LWCF);

MDOT Transportation Enhancement Program;

MDOT Transportation Alternatives Program

Other State or Federal funding sources;

Foundation grants; private contributions and others

CAPITAL IMPROVEMENT SCHEDULE

<u>Year</u>	<u>Project</u>	<u>County</u>	<u>Other Funds</u>	<u>Total Project Costs</u>
2019	PAUL HENRY - THORNAPPLE TRAIL COUNTY PARK - GRANT APPLICATION TAP Grant TAP Grant Application for paving of trail from the county line in Nashville to Greggs Crossing Road including the Nashville Trailhead (3 Miles)	\$50,000		\$50,000
2019	CHARLTON PARK – MASTER PLAN Overall Master Plan to include: Rustic and Modern Camping and Existing Park Improvements	\$16,000		\$16,000
2019	CHARLTON PARK - RECREATION AREA IMPROVEMENTS Improvements to include: Playground Improvements/ Replacement	\$50,000	\$50,000	\$100,000
2019	CHARLTON PARK - HISTORIC VILLAGE IMPROVEMENTS Improvements to include: Boardwalk Improvements/ Replacement	\$25,000		\$25,000
2020	BARRY COUNTY BIRDING TRAIL Provide wayfinding signage at birding locations	\$5,000		\$5,000
2020	CHARLTON PARK - RECREATION AREA IMPROVEMENTS Improvements to include Beach & Restroom Replacement	\$100,000	\$175,000	\$275,000
2021	PAUL HENRY THORNAPPLE TRAIL COUNTY PARK BRIDGE IMPROVEMENTS Improvements to include: Refurbishment of the Quimby, Morgan and Greggs Crossing Bridges	\$50,000	\$50,000	\$100,000
2021	CHARLTON PARK - RECREATION AREA IMPROVEMENTS Improvements to include: East and West Shelter Replacement	\$50,000	\$50,000	\$100,000
2021	CHARLTON PARK - HISTORIC VILLAGE IMPROVEMENTS Improvements to include: Village Site Lighting (Phase one)	\$25,000		\$25,000
2022	PAUL HENRY - THORNAPPLE TRAIL COUNTY PARK GRANT MNRTF Grant Application for paving trail county line in Nashville to Greggs Crossing Road (3 miles)	\$6,000		\$6,000

CAPITAL IMPROVEMENT SCHEDULE

<u>Year</u>	<u>Project</u>	<u>County</u>	<u>Other Funds</u>	<u>Total Project Costs</u>
2023	PAUL HENRY - THORNAPPLE TRAIL COUNTY PARK - CONSTRUCTION Construct paved trail from the county line in Nashville to Greggs Crossing Road including the Nashville Trailhead (3 Miles)	\$250,000	\$675,000	\$925,000
2023	CHARLTON PARK - HISTORIC VILLAGE IMPROVEMENTS Improvements to include: Village Site Lighting (Phase one)	\$25,000		\$25,000
2024	MCKEOWN BRIDGE PARK PHASE TWO – MASTER PLAN Master Plan Improvements to include: the relocation of the existing canoe/ kayak launch to the West side of McKeown Road; Additional fishing opportunities, Water Trail signage; Parking Improvements and Redevelopment of Phase One Improvements	\$8,000		\$8,000
2025	THORNAPPLE RIVER WATERTRAIL Complete plan for Thornapple River Water trail Wayfinding Signage located within the County Right of Way	\$5,000	\$5,000	\$10,000
2025	MCKEOWN BRIDGE PARK PHASE 2 Implement Phase 2 of Master Plan Improvements to include: the relocation of the existing canoe/ kayak launch to the west side of the Thornapple River; additional fishing opportunities, Water Trail signage; and Parking Improvements	\$125,000	\$125,000	\$250,000
The following projects are either on-going or will be acted upon as property becomes available and matching funds are identified.				
2019-2025	PAUL HENRY – THORNAPPLE TRAIL COUNTY PARK Work towards gaining a continuous trail route by gaining easements across private property, property acquisition or by studying alternative routes.	To be determined	MNRTF MDOT TE	To be determined.
2019-2025	PARK LAND ACQUISITION Acquire additional park land as it becomes available targeting areas that are deficient in recreation facilities, property adjacent to existing parks and waterfront/natural areas.	Acquire property and develop as land becomes available, cost unknown.		

<u>Recreation Area Projects/Goals/Objectives</u>	Costs	Priority
Accessibility Improvements (Phases)	Make accessibility improvements that incorporate universal design components for water access, trails, and parking.	
Swimming Area Improvements/Reconstruction	Enlarging of sand beach area and creating better access & erosion control. Picnic facility, playground, restroom renovation.	
Playground Improvements/Replacement	Installation of new playground structure(s) throughout Park.	
Trail Improvements & Signage	Developing a sign plan, mapping and applying tread material to existing trail system.	
Campground Design & Engineering	Develop plans and program for financing and constructing a campground.	
River Trail & Fishing Platforms Phase 1	Design phase and engineering for developing an extensive universally accessible river/lake trail system with fishing platforms.	
Improve Habitat Areas	Develop natural resources plan and begin successional tree and vegetation planting.	
Boat Ramp Area Improvements/Reconstruction	Renovation of boat ramp area; including dock, ramp and restroom renovations/replacement.	
River Road Access Point	Developing motorized and non-motorized access from River Road to Recreation Area.	
Ball field Improvements or Conversion	Improve ball field for little league regulation play.	
East & West Shelter Replacement	Replace two smaller existing with one larger shelter	
Outdoor Recreational Opportunities	Outdoor court for pickle ball, basketball. Disc golf course and volleyball court improvements	

Master Plan Capital Improvement Schedule Historic Charlton Park 2019-2023 Draft 9-10-18

Fencing Replacement & Boundary Identifiers	Survey Northeast park boundary and place boundary signs along with fencing and tree removal.		
Restroom Facility Improvements & Upgrades	Renovation to existing facilities and infrastructure.		
<u>Historic Village Projects/Goals/Objectives</u>			
Boardwalk Improvements/Replacement	Begin replacement and developing new boardwalk/trail system.		
Collections Storage Space	Construction of a new collection storage and display building.		
Village Lighting	Feasibility and design work for developing time period correct outdoor lighting with the Village.		
Security System Improvements	Development of a security plan and installation of additional control measures.		

Barry County Parks and Recreation Master Plan 2019-2023

9. Local Adoption and Certification Plan



MEETING NOTICE

There will be a special joint meeting of the Historic Charlton Park Board of Directors and the Barry County Parks & Recreation Board of Directors on Wednesday, August 8, 2018, beginning at 6:30 p.m. at the Barry County Central Dispatch building, 2600 Nashville Rd, Hastings, MI 49058. The County Board of Commissioners have been invited to attend potentially creating a quorum of the board.

For information contact:
Dan Patton, Director
Historic Charlton Park
2545 S. Charlton Park Rd.
Hastings, MI 49058
(269) 945-3775



MEETING NOTICE

There will be a special joint meeting of the Historic Charlton Park Board of Directors and the Barry County Parks & Recreation Board of Directors on Thursday, September 20, 2018, beginning at 5:30 p.m. at the Tyden Building Community Room, 121 South Church Street, Hastings, MI 49058. The County Board of Commissioners have been invited to attend potentially creating a quorum of the board.

For information contact:
Dan Patton, Director
Historic Charlton Park
2545 S. Charlton Park Rd.
Hastings, MI 49058
(269) 945-3775

BARRY COUNTY PARKS & RECREATION BOARD
HISTORIC CHARLTON PARK VILLAGE & MUSEUM BOARD

PUBLIC NOTICE

A Public Meeting will be held on Tuesday, October 30, 2018 at 6:00 p.m. at the Barry County 911 Dispatch Center, 2600 Nashville Rd., Hastings, MI 49058, to solicit public input and suggestions on the Barry County Parks and Recreation Five-Year Master Plan. This plan will address both current recreational facilities and future needs within the County and is required by the Department of Natural Resources to allow the County to apply for State and Federal grant funds for recreational improvements.

Individuals with disabilities requiring aids or services should contact the Charlton Park office 5 days prior to the meeting.

**BARRY COUNTY PARKS & RECREATION BOARD
HISTORIC CHARLTON PARK VILLAGE & MUSEUM BOARD
PUBLIC HEARING NOTICE**

A Public Meeting will be held on Wednesday, December 5, 2018 at 5:30 p.m. at the Tyden Center, 121 South Church Street, Hastings, MI 49058, to solicit public input and suggestions on the Barry County Parks and Recreation Five-Year Master Plan. This plan will address both current recreational facilities and future needs within the County and is required by the Department of Natural Resources to allow the County to apply for State and Federal grant funds for recreational improvements.

Individuals with disabilities requiring aids or services should contact the Charlton Park office 5 days prior to the meeting.

Barry County Parks and Recreation Master Plan 2019-2023

10. Appendices

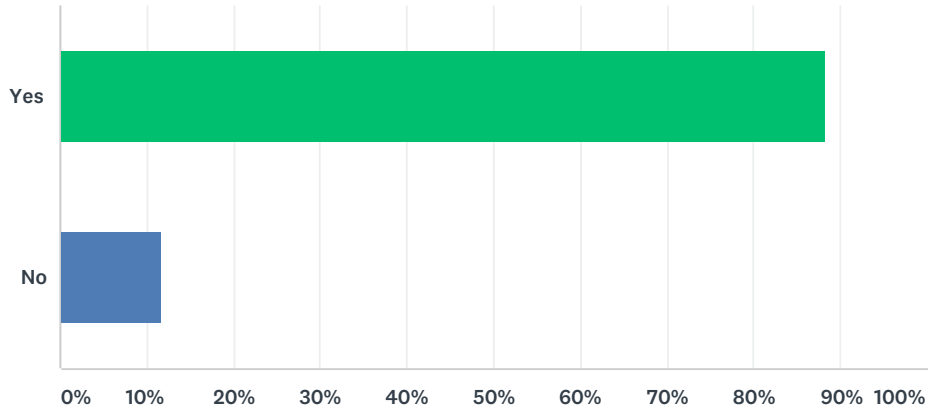


Barry County Parks and Recreation Survey

Barry County is currently updating its five year Parks and Recreation Master Plan. Part of this planning process involves a survey to receive input from County residents. We would appreciate a few moments of your time to complete this survey. Your input on future parks and recreation opportunities is very important.

Q1 Do you live in Barry County?

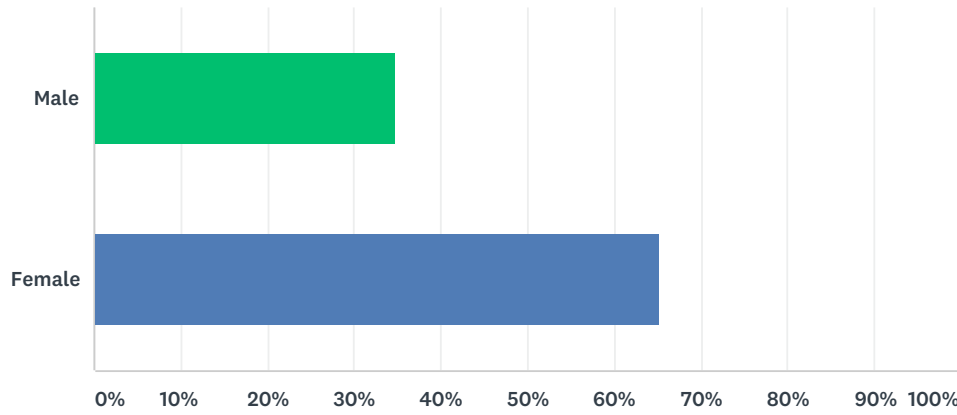
Answered: 348 Skipped: 3



ANSWER CHOICES	RESPONSES	
Yes	88.22%	307
No	11.78%	41
TOTAL		348

Q2 Are You:

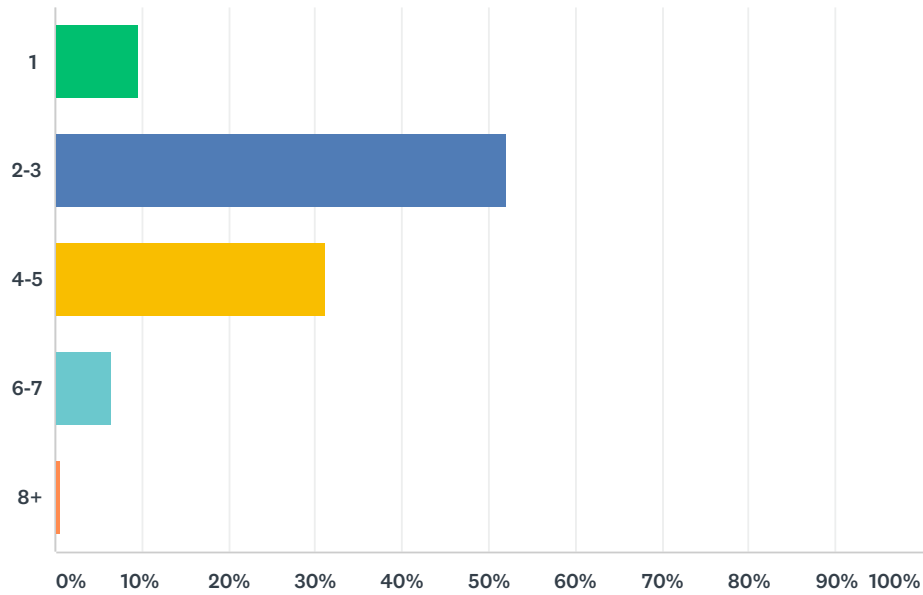
Answered: 349 Skipped: 2



ANSWER CHOICES	RESPONSES
Male	34.67% 121
Female	65.33% 228
Total Respondents: 349	

Q3 How many people currently live in your household?

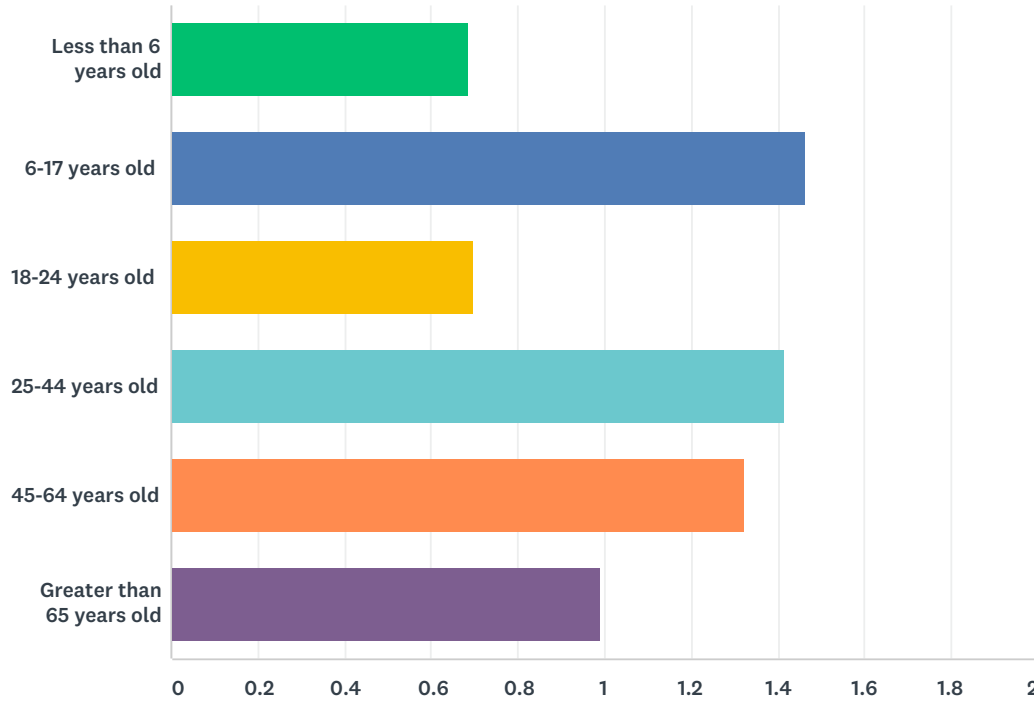
Answered: 350 Skipped: 1



ANSWER CHOICES	RESPONSES	
1	9.71%	34
2-3	52.00%	182
4-5	31.14%	109
6-7	6.57%	23
8+	0.57%	2
TOTAL		350

Q4 How many people in your household are:

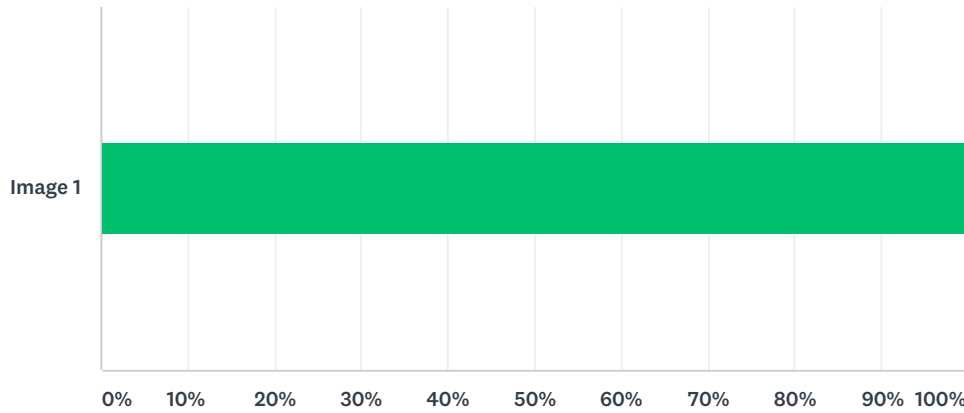
Answered: 351 Skipped: 0



ANSWER CHOICES	AVERAGE NUMBER	TOTAL NUMBER	RESPONSES
Less than 6 years old	1	87	127
6-17 years old	1	252	172
18-24 years old	1	79	113
25-44 years old	1	276	195
45-64 years old	1	275	208
Greater than 65 years old	1	137	138
Total Respondents: 351			

Q5 The following questions refer to the County Parks in Barry County, including the Thornapple Trail.

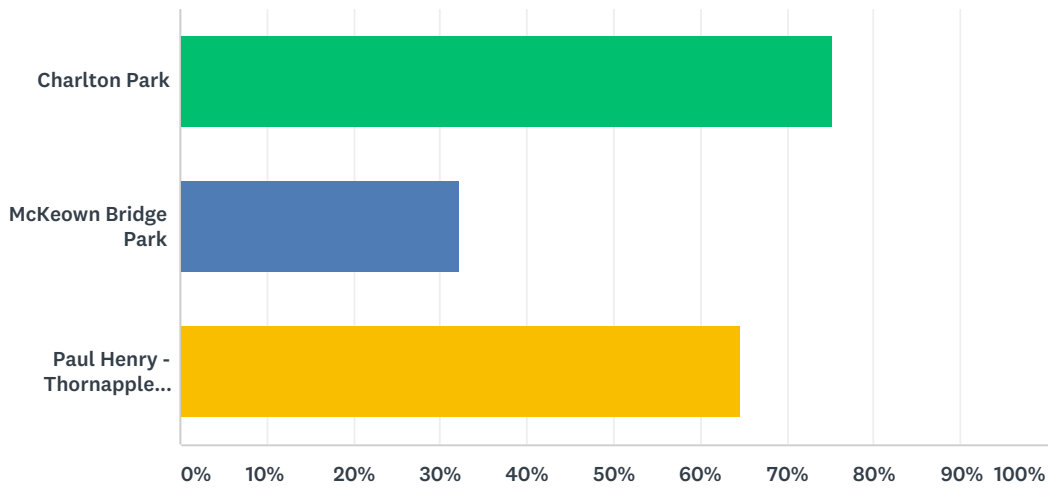
Answered: 84 Skipped: 267



ANSWER CHOICES	RESPONSES
Image 1	100.00% 84
TOTAL	84

Q6 Which of the County's parks and facilities have you or members of your household utilized in the last 12 months?

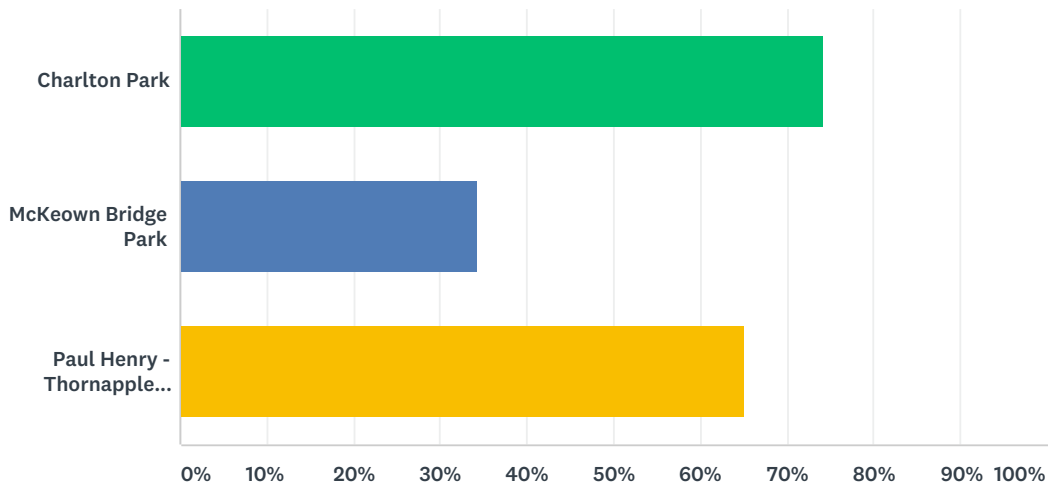
Answered: 320 Skipped: 31



ANSWER CHOICES	RESPONSES
Charlton Park	75.31% 241
McKeown Bridge Park	32.19% 103
Paul Henry - Thornapple Trail	64.69% 207
Total Respondents: 320	

Q7 Check any of these Parks and Recreation Facilities you or members of your household have utilized in the last 12 months.

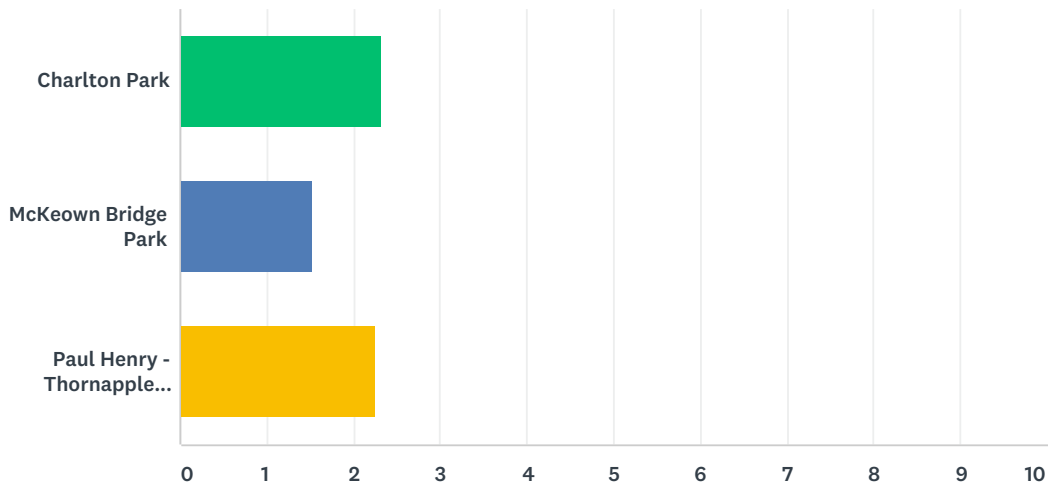
Answered: 318 Skipped: 33



ANSWER CHOICES	RESPONSES	
Charlton Park	74.21%	236
McKeown Bridge Park	34.28%	109
Paul Henry - Thornapple Trail	65.09%	207
Total Respondents: 318		

Q8 Please rank the County's facilities you would like to see improved or expanded. 1=High Priority, 4=Low Priority

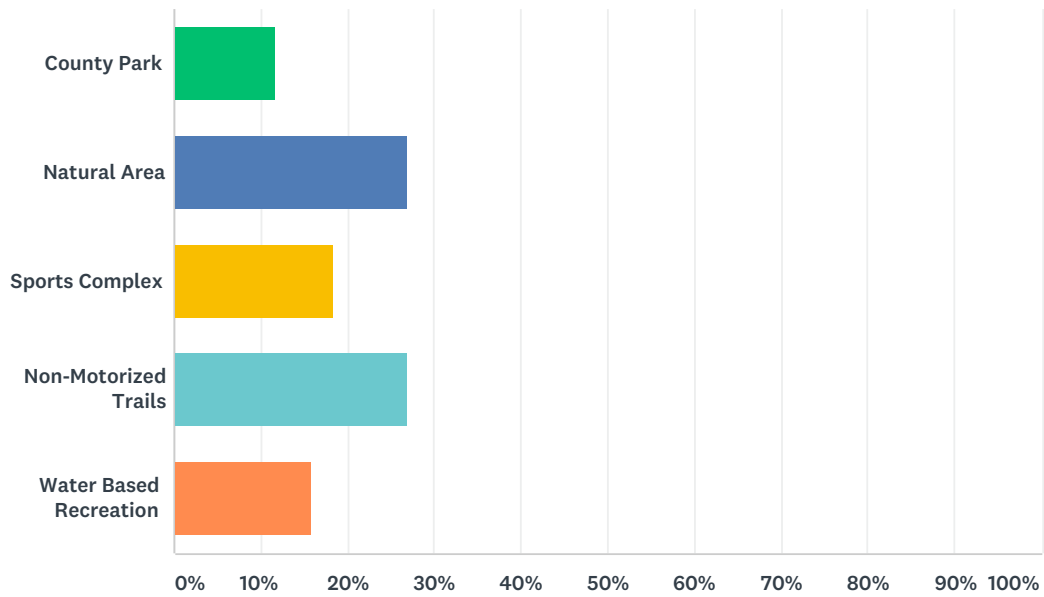
Answered: 316 Skipped: 35



	1	2	3	TOTAL	SCORE
Charlton Park	50.72% 141	31.29% 87	17.99% 50	278	2.33
McKeown Bridge Park	7.69% 19	37.65% 93	54.66% 135	247	1.53
Paul Henry - Thornapple Trail	48.38% 134	28.88% 80	22.74% 63	277	2.26

Q9 What additional types of new parks would you most like to see in the County?

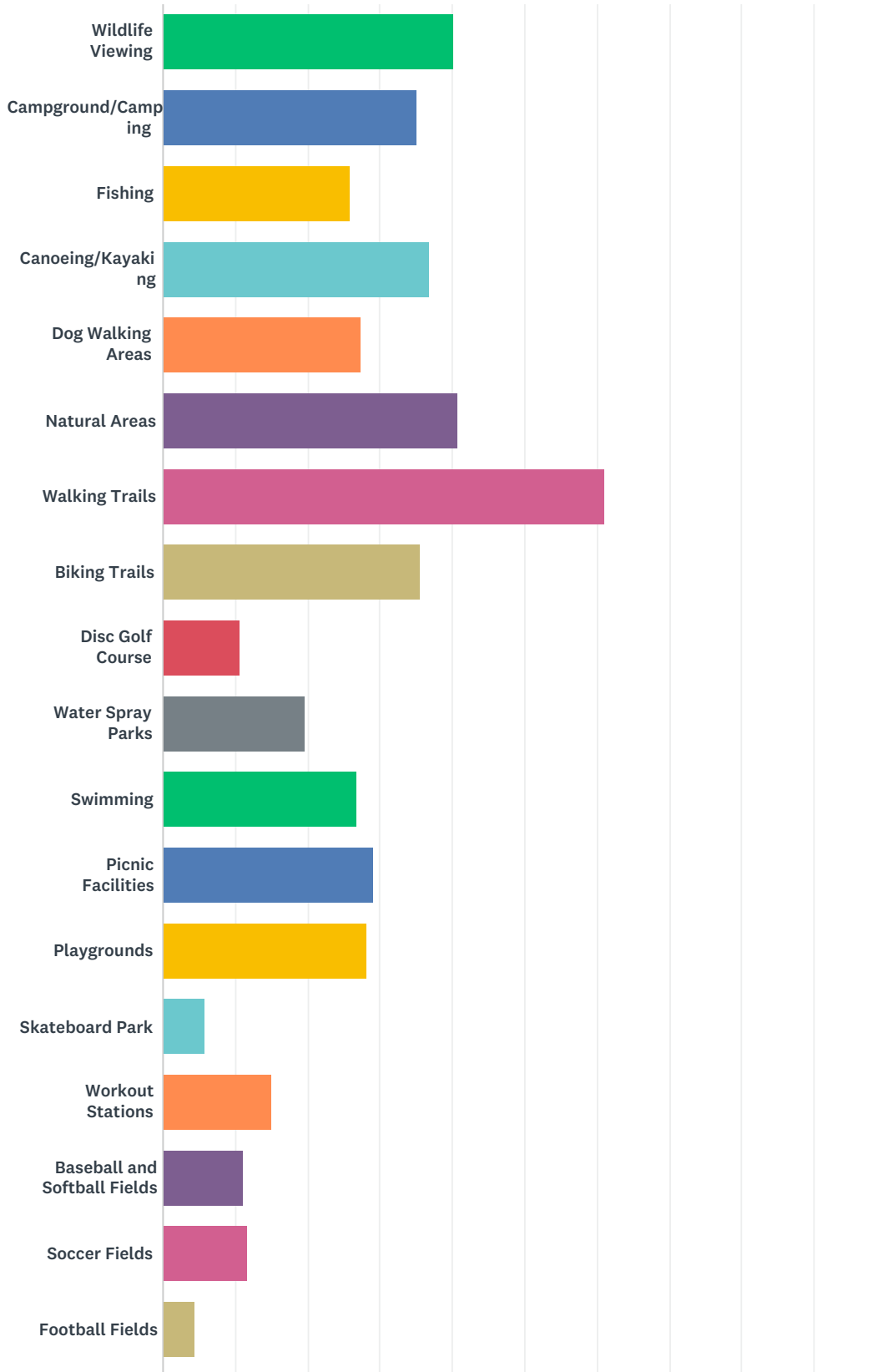
Answered: 315 Skipped: 36

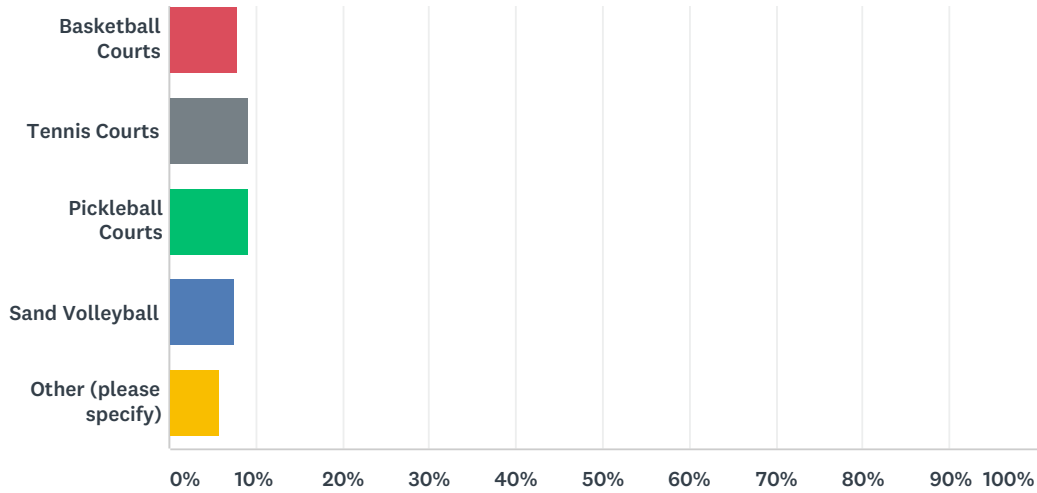


ANSWER CHOICES	RESPONSES	
County Park	11.75%	37
Natural Area	26.98%	85
Sports Complex	18.41%	58
Non-Motorized Trails	26.98%	85
Water Based Recreation	15.87%	50
TOTAL		315

Q10 Which of the following activities/facilities would you most like to see expanded in the County?

Answered: 344 Skipped: 7



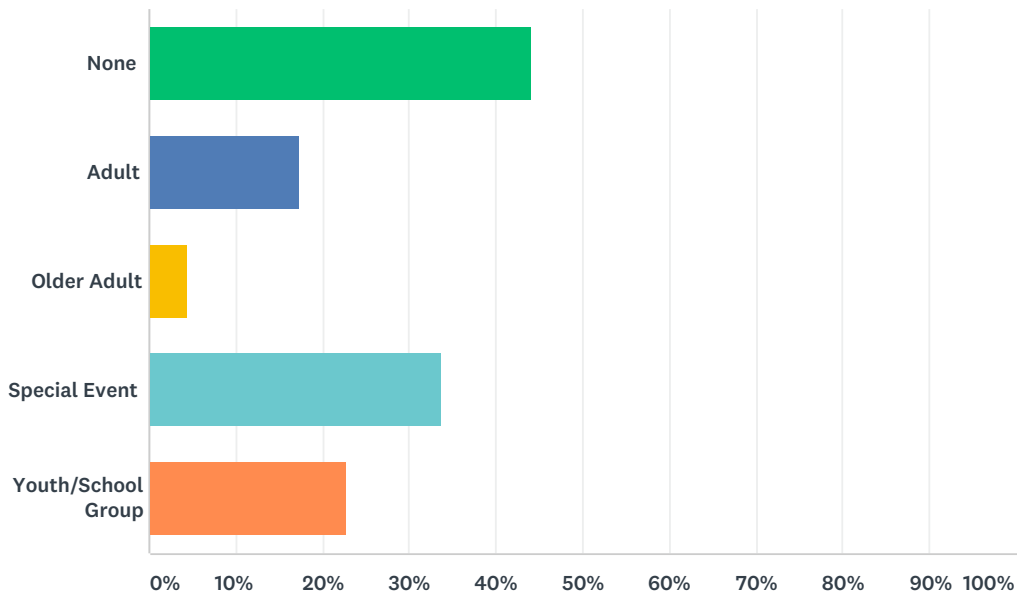


ANSWER CHOICES	RESPONSES	
Wildlife Viewing	40.12%	138
Campground/Camping	35.17%	121
Fishing	25.87%	89
Canoeing/Kayaking	36.92%	127
Dog Walking Areas	27.33%	94
Natural Areas	40.70%	140
Walking Trails	61.05%	210
Biking Trails	35.47%	122
Disc Golf Course	10.76%	37
Water Spray Parks	19.77%	68
Swimming	26.74%	92
Picnic Facilities	29.07%	100
Playgrounds	28.20%	97
Skateboard Park	5.81%	20
Workout Stations	15.12%	52
Baseball and Softball Fields	11.05%	38
Soccer Fields	11.63%	40
Football Fields	4.36%	15
Basketball Courts	7.85%	27
Tennis Courts	9.30%	32
Pickleball Courts	9.30%	32
Sand Volleyball	7.56%	26
Other (please specify)	5.81%	20

Total Respondents: 344

Q11 In what programming offered by Barry County Parks have you or your family participated in the last year?

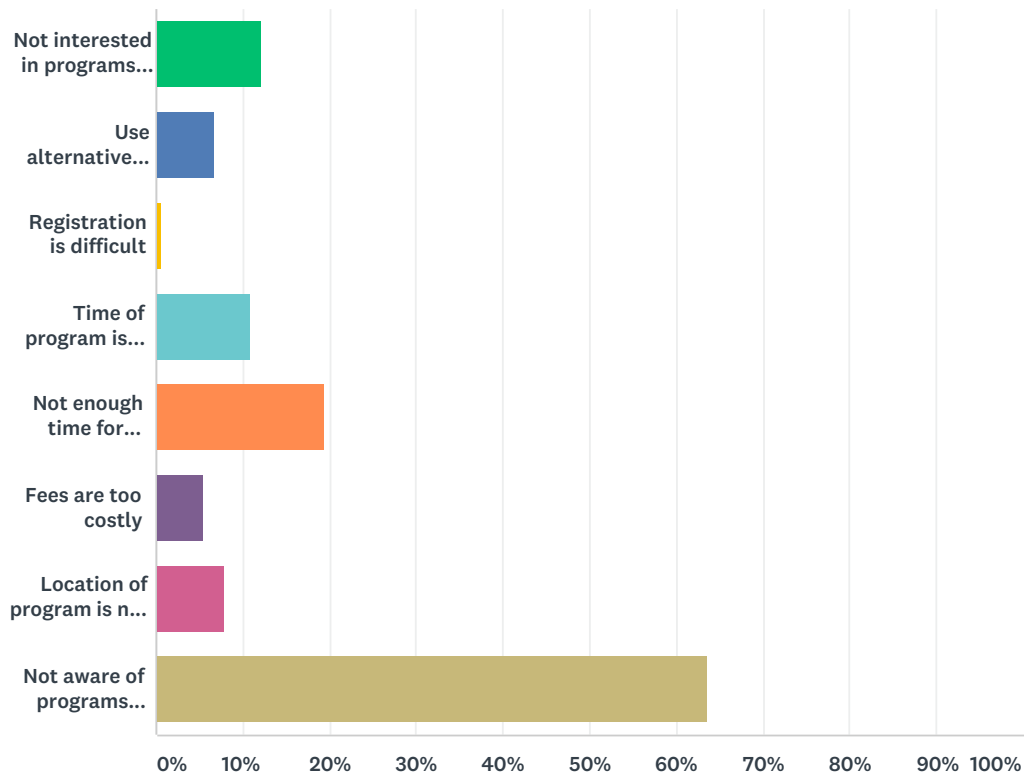
Answered: 345 Skipped: 6



ANSWER CHOICES	RESPONSES	
None	44.06%	152
Adult	17.39%	60
Older Adult	4.35%	15
Special Event	33.62%	116
Youth/School Group	22.90%	79
Total Respondents: 345		

Q12 If you answered "none" to the question above, please indicate your reason for non-participation.

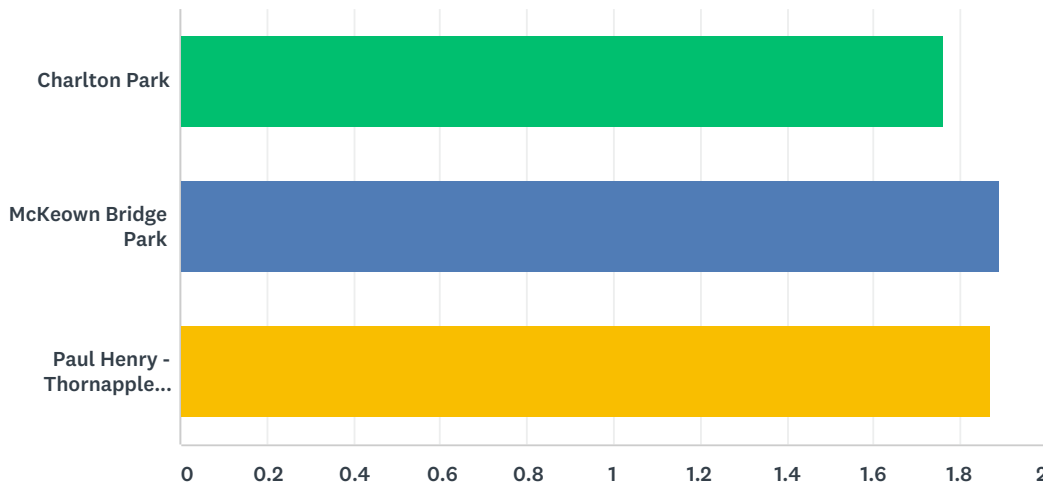
Answered: 165 Skipped: 186



ANSWER CHOICES	RESPONSES	
Not interested in programs offered	12.12%	20
Use alternative programming	6.67%	11
Registration is difficult	0.61%	1
Time of program is inconvenient	10.91%	18
Not enough time for participation	19.39%	32
Fees are too costly	5.45%	9
Location of program is not convenient	7.88%	13
Not aware of programs offered	63.64%	105
Total Respondents: 165		

Q13 How would you rate the maintenance of Barry County Parks you have visited?

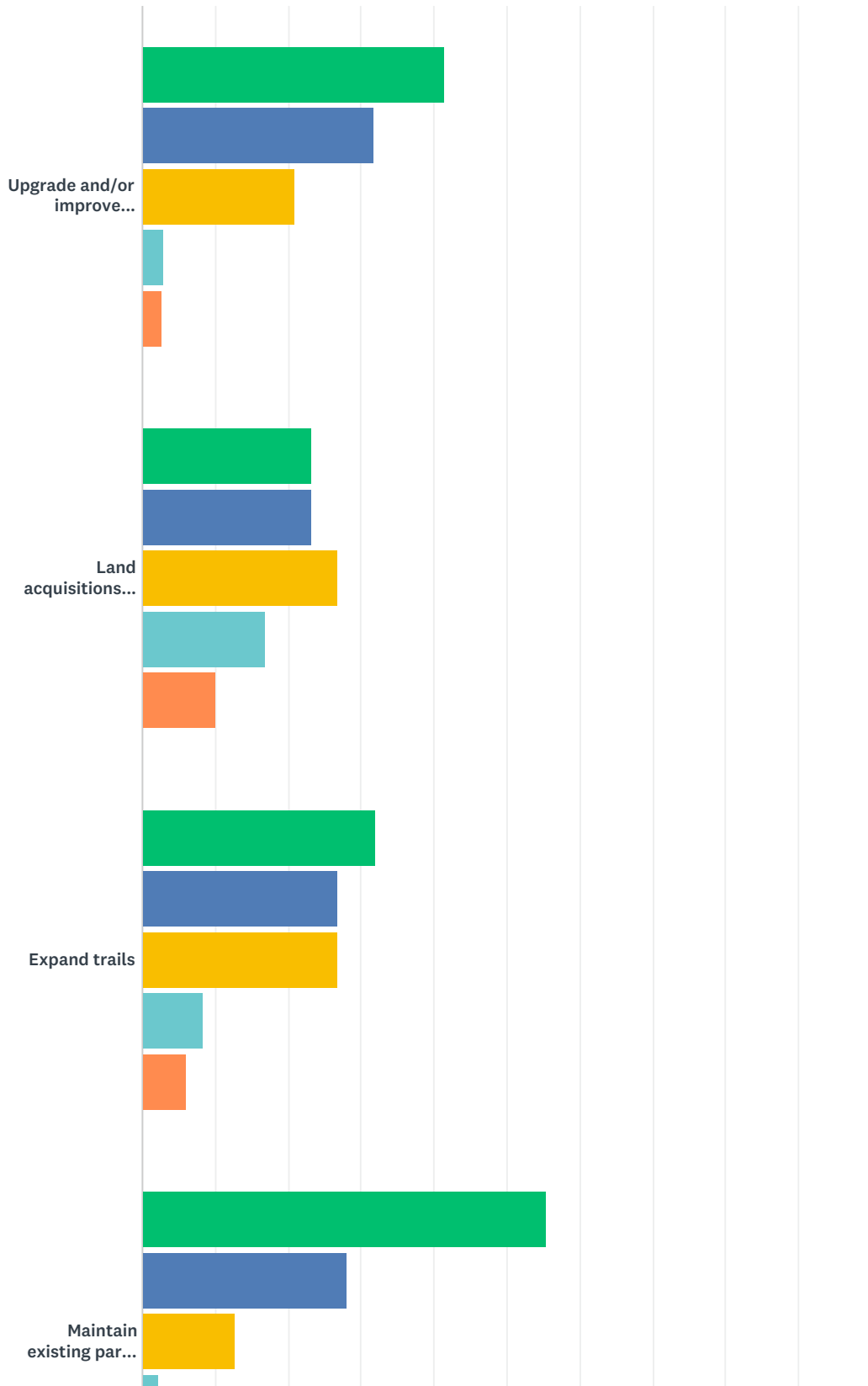
Answered: 334 Skipped: 17

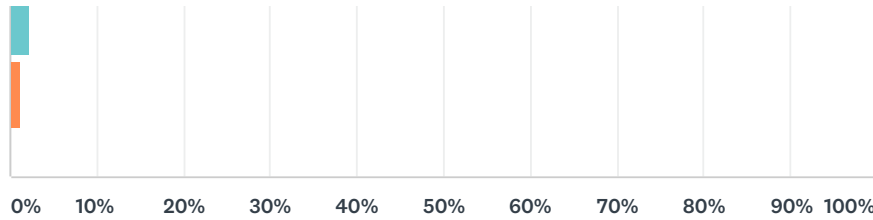


	EXCELLENT	GOOD	FAIR	POOR	TOTAL	WEIGHTED AVERAGE
Charlton Park	38.10% 120	49.21% 155	11.11% 35	1.59% 5	315	1.76
McKeown Bridge Park	28.17% 60	55.40% 118	15.49% 33	0.94% 2	213	1.89
Paul Henry - Thornapple Trail	28.73% 77	56.72% 152	13.43% 36	1.12% 3	268	1.87

Q14 Please rate, in order of priority, how you feel park and recreation funding should be spent.

Answered: 342 Skipped: 9



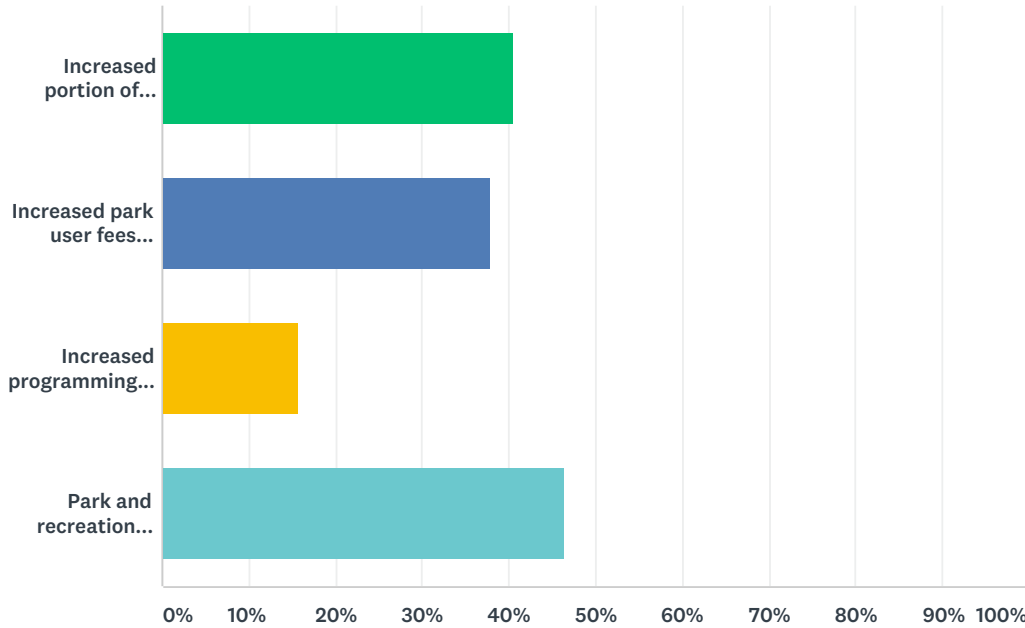


■ High
 ■ Medium High
 ■ Medium
 ■ Medium Low
 ■ Low

	HIGH	MEDIUM HIGH	MEDIUM	MEDIUM LOW	LOW	TOTAL
Upgrade and/or improve existing park facilities	41.52% 137	31.82% 105	20.91% 69	3.03% 10	2.73% 9	330
Land acquisitions for new parks/open space	23.19% 77	23.19% 77	26.81% 89	16.87% 56	9.94% 33	332
Expand trails	31.93% 106	26.81% 89	26.81% 89	8.43% 28	6.02% 20	332
Maintain existing park facilities	55.52% 186	28.06% 94	12.84% 43	2.39% 8	1.19% 4	335

Q15 The County will continue to solicit state and federal grant funding and private donations/fund raising for capital improvements. What other funding options should be considered?

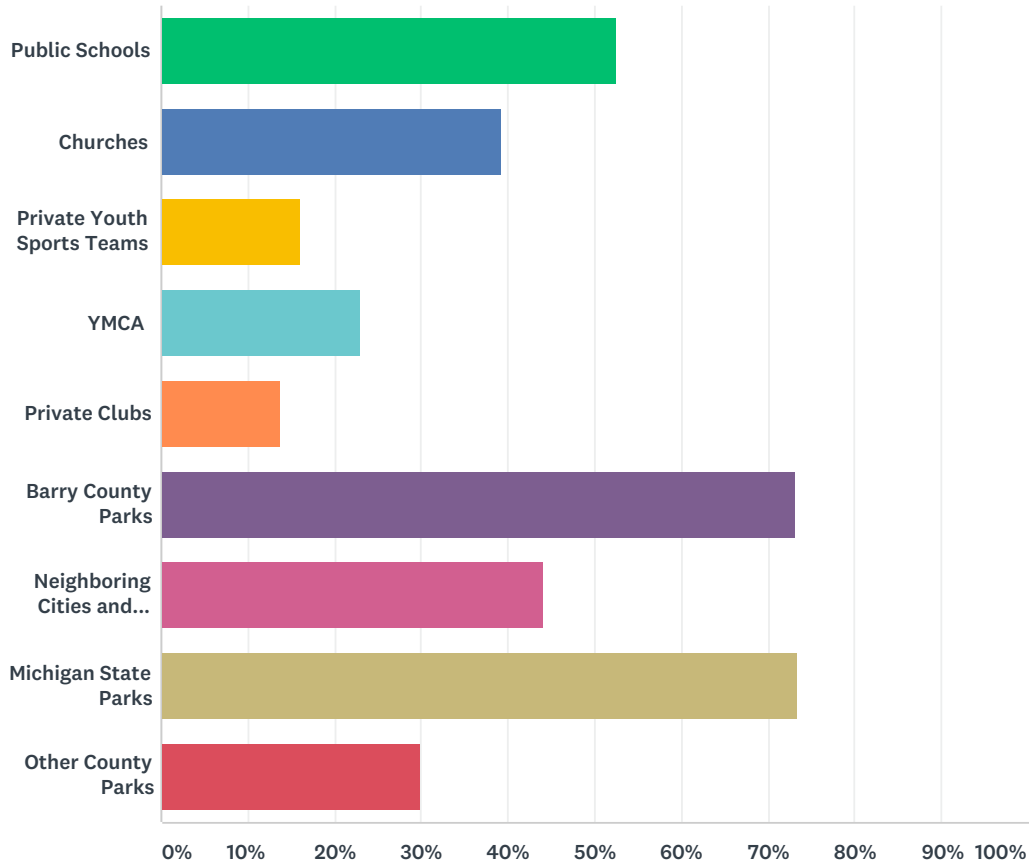
Answered: 293 Skipped: 58



ANSWER CHOICES	RESPONSES	
Increased portion of Barry County general tax dollars	40.61%	119
Increased park user fees (rental facilities, etc.)	37.88%	111
Increased programming fees	15.70%	46
Park and recreation mileage	46.42%	136
Total Respondents: 293		

Q16 Check all of the organizations that you or members of your household have used for indoor and outdoor recreation activities during the last 12 months.

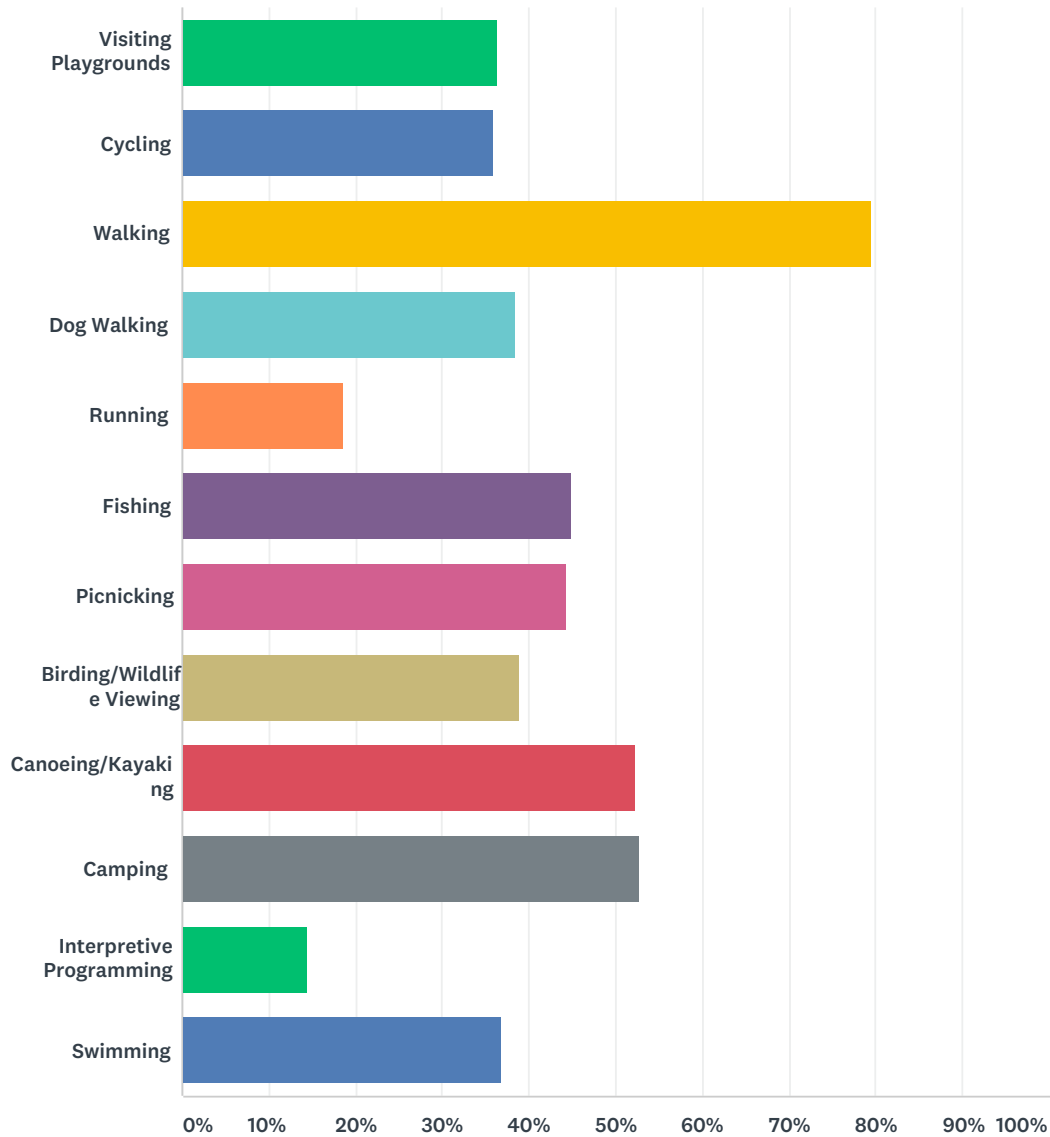
Answered: 335 Skipped: 16



ANSWER CHOICES	RESPONSES	
Public Schools	52.54%	176
Churches	39.40%	132
Private Youth Sports Teams	16.12%	54
YMCA	22.99%	77
Private Clubs	13.73%	46
Barry County Parks	73.13%	245
Neighboring Cities and Townships	44.18%	148
Michigan State Parks	73.43%	246
Other County Parks	29.85%	100
Total Respondents: 335		

Q17 Please indicate activities you enjoy:

Answered: 340 Skipped: 11

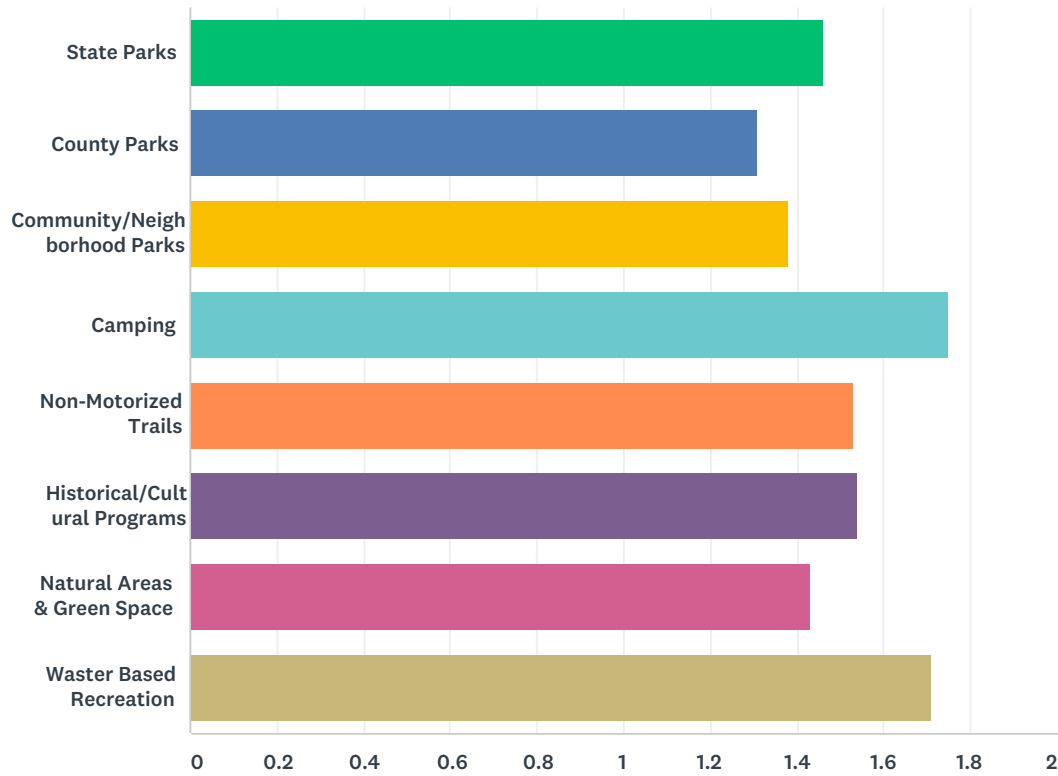


ANSWER CHOICES	RESPONSES
Visiting Playgrounds	36.47% 124
Cycling	35.88% 122
Walking	79.41% 270
Dog Walking	38.53% 131
Running	18.53% 63
Fishing	45.00% 153
Picnicking	44.41% 151
Birding/Wildlife Viewing	38.82% 132

Canoeing/Kayaking	52.35%	178
Camping	52.65%	179
Interpretive Programming	14.41%	49
Swimming	36.76%	125
Total Respondents: 340		

Q18 How important is it to have the following in Barry County:

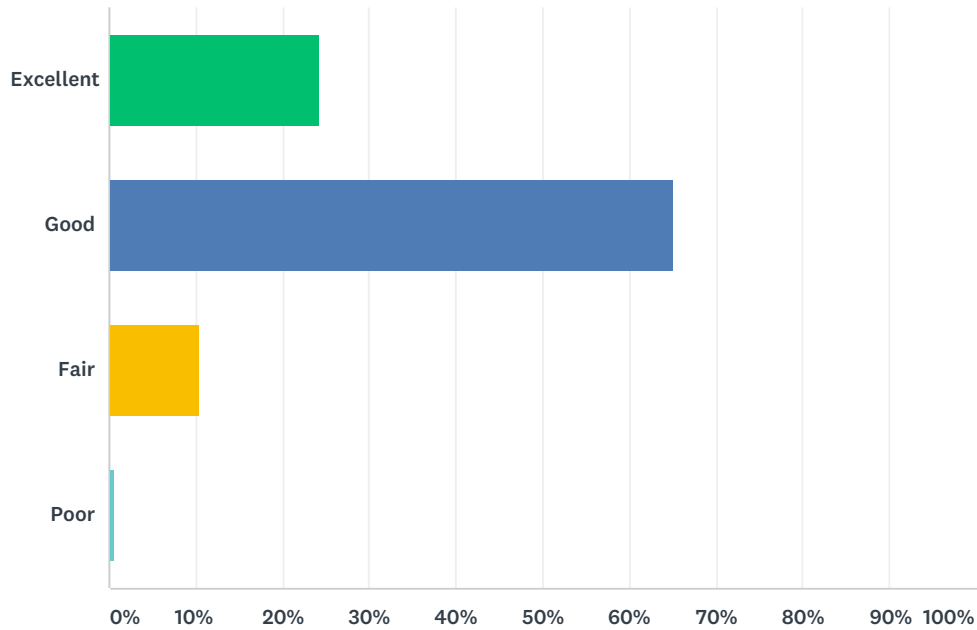
Answered: 345 Skipped: 6



	VERY IMPORTANT	IMPORTANT	NOT IMPORTANT	TOTAL	WEIGHTED AVERAGE
State Parks	62.57% 209	29.04% 97	8.38% 28	334	1.46
County Parks	70.33% 237	27.89% 94	1.78% 6	337	1.31
Community/Neighborhood Parks	66.36% 217	29.66% 97	3.98% 13	327	1.38
Camping	40.00% 130	44.62% 145	15.38% 50	325	1.75
Non-Motorized Trails	56.93% 189	33.43% 111	9.64% 32	332	1.53
Historical/Cultural Programs	53.43% 179	39.40% 132	7.16% 24	335	1.54
Natural Areas & Green Space	61.90% 208	33.33% 112	4.76% 16	336	1.43
Waster Based Recreation	40.31% 129	48.44% 155	11.25% 36	320	1.71

Q19 How would you rate the Parks owned by Barry County?

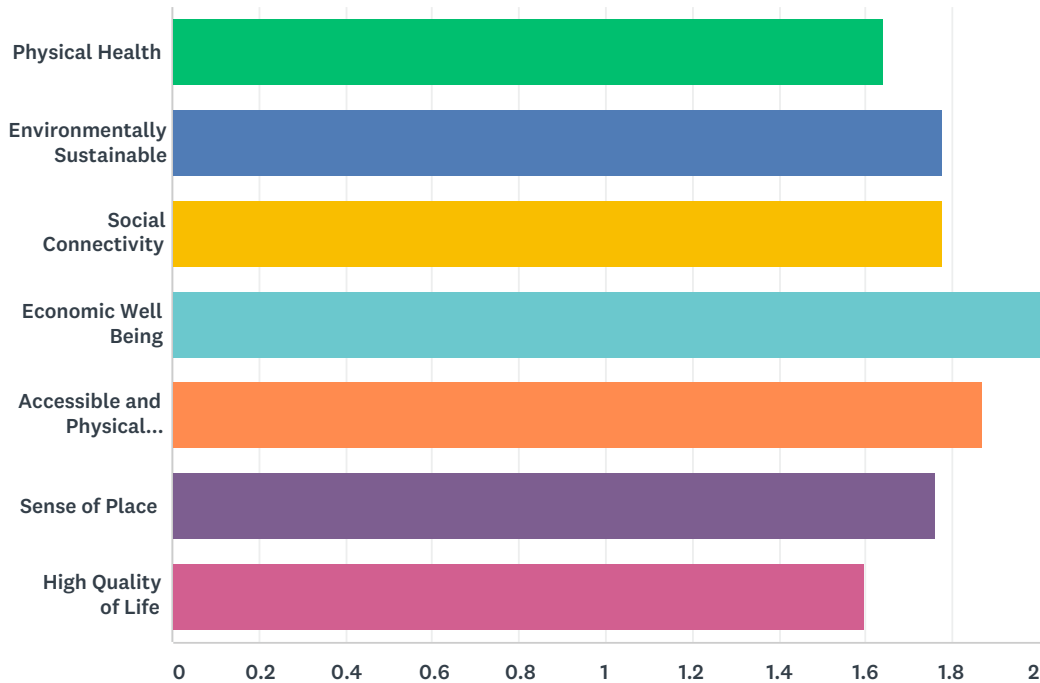
Answered: 341 Skipped: 10



ANSWER CHOICES	RESPONSES	
Excellent	24.34%	83
Good	65.10%	222
Fair	10.56%	36
Poor	0.59%	2
Total Respondents: 341		

Q20 To what degree do you think Parks and Recreation contribute to Barry County being or having...

Answered: 342 Skipped: 9



	GREATLY CONTRIBUTES	SOMEWHAT CONTRIBUTES	DOES NOT CONTRIBUTE	NO OPINION	TOTAL	WEIGHTED AVERAGE
Physical Health	46.75% 158	46.45% 157	2.37% 8	4.44% 15	338	1.64
Environmentally Sustainable	38.74% 129	49.55% 165	6.31% 21	5.41% 18	333	1.78
Social Connectivity	37.39% 126	51.63% 174	6.53% 22	4.45% 15	337	1.78
Economic Well Being	27.54% 92	51.20% 171	14.67% 49	6.59% 22	334	2.00
Accessible and Physical Connectivity	35.42% 119	49.70% 167	7.14% 24	7.74% 26	336	1.87
Sense of Place	45.97% 154	40.30% 135	5.97% 20	7.76% 26	335	1.76
High Quality of Life	56.55% 190	33.04% 111	4.46% 15	5.95% 20	336	1.60

Q21 Thank you for your participation. If you have additional comments or suggestions please feel free to use the space below.

Answered: 60 Skipped: 291