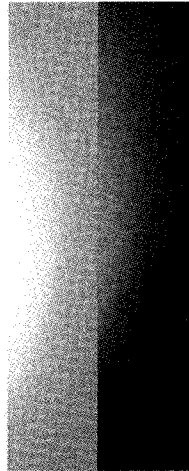
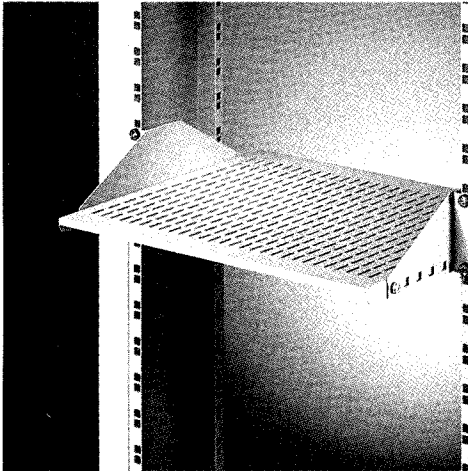


# 19" laboratory rack

## Accessories



### Ordering 19" equipment support, reinforced and adjustable

**Load-carrying capacity:** max. 25 kg

**Mounting pitch:** 2 U depth-adjustable in 25 mm increments

**Surface area:** (W x D) 430 x 400 mm

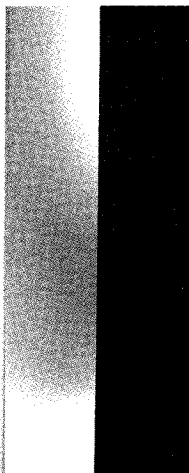
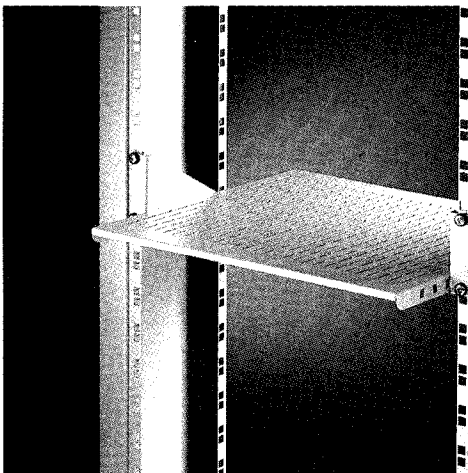
**Protrusion at front:** 168 mm

#### Delivery comprises

Item	Qty	Description	Material	Finish
1	1	Equipment support	St 1.5 mm	RAL 7030
2	2	Bracket, reinforced	St 2/2.5 mm	RAL 7030
3	1 kit	Assembly parts		

**Delivery:** in kit form

Order No. **20119-257**



### Ordering 19" equipment support, adjustable

**Load-carrying capacity:** max. 15 kg

**Mounting pitch:** 2 U depth-adjustable in 25 mm increments

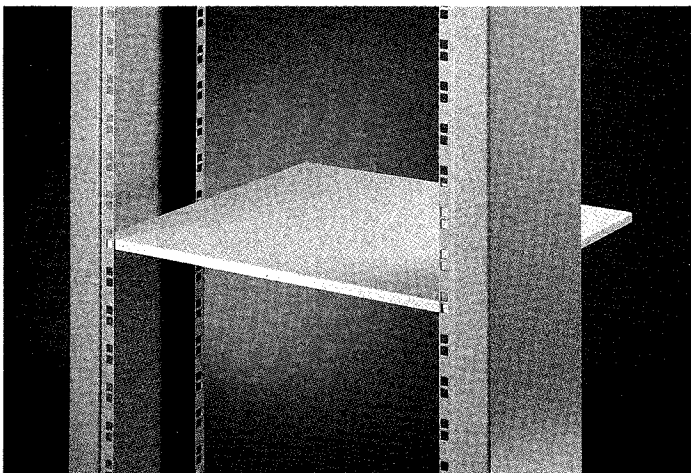
**Surface area:** (W x D) 430 x 400 mm

#### Delivery comprises

Item	Qty	Description	Material
1	1	Equipment support	St 1.5 mm
2	2	Bracket, reinforced	St 2 mm
3	1 kit	Assembly parts	

**Delivery:** in kit form

Finish	Order No.
RAL 7030	<b>20234-185</b>
AlZn	<b>20118-539</b>



### Ordering 19" equipment support

**Load-carrying capacity:** max. 8 kg

**Mounting pitch:** 1 U

**Surface area:** (W x D) 489 x 400 mm

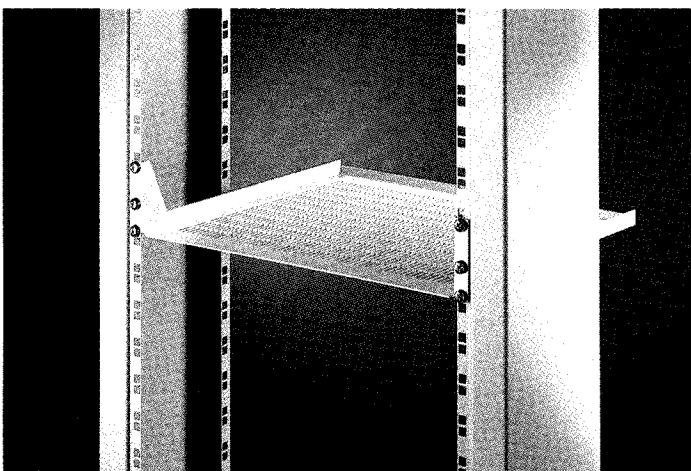
#### Delivery comprises

Item	Qty	Description	Material	Finish
1	1	Equipment support	St 1.5 mm	RAL 7035
2	1 kit	Assembly parts		

#### Note

Panel mounts are required to mount the equipment support.

Order No. **20119-117**



### Ordering 19" equipment support

**Load-carrying capacity:** max. 5 kg

**Mounting pitch:** 2 U

**Surface area:** (W x D) 447 x 395 mm

#### Delivery comprises

Item	Qty	Description	Material
1	1	Equipment support	St 1.5 mm
2	1 kit	Assembly parts	

Finish	Order No.
RAL 7030	<b>20118-004</b>
AlZn	<b>20118-540</b>