

Industrial Product Catalog

VLT[®] AutomationDrive

Reliable simplicity to keep your
business **running smoothly**

VLT[®] drives are factory tested insuring the highest level of quality and reliability.

100%
full load
factory tested





50%

Energy Savings

We take responsibility for every element of our products. The fact that we develop and produce our own features, hardware, software, power modules, printed circuit boards and accessories is your guarantee of reliable products.

Danfoss Industrial Drives:
Rugged - Reliable - Respected

Efficiency and reliability you can depend upon

The basic urge for Danfoss VLT® Drives is to enable our customers to have easy and efficient control of any application powered by an AC motor.

Controlling an application – a fan, pump, compressor, centrifuge, hoist, etc. – via the power supply provides two important benefits:

- Fully automated operation
- Major energy savings

Energy savings

Energy savings are tied to the technology and the fact that applications need less energy when idle or operating with partial loads. VLT® drives do the trick – and no brand is more energy efficient than VLT® drives.

Fully automated operation

VLT® drives enable a facility to increase its automation capabilities. Not every application is the same across all industries, but with VLT® drives customized programming, customers can determine what parameters are essential to their specific needs.

One basic technology – millions of versions

That's why our customers always will ask for specific power sizes, features, enclosure classes and fieldbus protocols.

The VLT® concept is to mass produce such highly customized drives from a relatively limited number of components on stock.

Factory built and tested

Having received an order – a drive specified by the customer – our factory builds it and tests it against real motors before shipping.

Factories and competence centres all around the globe, enables Danfoss VLT® Drives to deliver drives that suits your purpose exactly – within a few days.

Throughput modularity

This is possible due to throughput modularity in the design. Components developed for one drive can be mass produced and used in many different types of drives – and the same modularity allows for easy and quick updates and upgrades of your VLT® drive.

Know one and you will know them all

The control panel is such an element. Knowing how to control one drive with the local control panel, you will be able to control all other VLT® drives. Embedded features and different plug-in options make the difference between the different versions.

This catalog presents the majority of our different versions and describes how they are dedicated for specific industries and applications.



Contents

PAGE 6



VLT® AutomationDrive

The VLT® AutomationDrive is a single drive concept that covers the entire spectrum of drives applications – a major benefit in commissioning, operating and maintaining the equipment. VLT® AutomationDrive comes in a standard version (FC 301) and an advanced high dynamic version (FC 302) with additional functionalities.

PAGE 22



VLT® DriveMotor FCM 300

The VLT® FCM 300 Series is an integrated drive-motor solution which combines a VLT® frequency converter and a high standard quality induction motor in a single product. The frequency converter is attached in place of the motor terminal box and it is no higher than the standard terminal box – nor wider or longer than the motor.

PAGE 10



VLT® Automation VT Drive

VLT® Automation VT Drive (FC 322) is the perfect match for pumps and blowers in modern industrial applications, offering advanced application protective features. Available with cascade control in fixed speed mode or master/follower mode.

PAGE 24



VLT® OneGearDrive

The OneGearDrive™ is designed especially for use in the food and beverage industry. It comes in two versions, the HygienicDrive and the Standard version. The HygienicDrive is certified for use in clean rooms and the pharmaceutical industry. The compact construction of the OneGearDrive makes it especially suitable for mounting on transport and conveyor systems.

PAGE 14



VLT® 2800 Series

An extremely compact series of drives designed for side-by-side mounting and developed specifically for the low power market.

PAGE 26



VLT® Soft Starter MCD 500

A total motor-starting solution with advanced start, stop and protection features, Adaptive Acceleration Control, inside delta connection, 4 line graphical display and multiple programming setup menus.

PAGE 16



VLT® Micro Drive

A compact general purpose drive for AC motors up to 30 HP. It performs perfectly even in complex application set-ups and optimises energy efficiency and operation.

PAGE 28



VLT® Compact Starter MCD 200

The VLT® Compact Starter MCD 200 is a compact and cost effective soft starter range for applications where direct-on-line starting is undesirable. MCD 200 is, because of its size and functionality, a good alternative to other reduced voltage starting methods such as star/delta starters.

PAGE 18



VLT® Decentral Drive FCD 302

The VLT® Decentral Drive FCD 302 is the new generation of the highly successful VLT® Decentral FCD 300, based on the VLT® AutomationDrive FC 302 platform. It combines the key features of both products in a completely re-designed enclosure, made for best fit on direct machine mounting.

PAGE 30



VLT® Soft Starter MCD 100

The VLT® Soft Starter is a cost effective and extremely compact soft starter for AC motors from 1.5 - 15 HP. Due to a unique semiconductor design it is a true "fit and forget" product.

PAGE 20



VLT® Decentral Drive FCD 300

The VLT® FCD 300 is a complete frequency converter designed for decentral mounting. It can be mounted on the machine/wall – close to the motor – or directly onto the motor. The decentral design eliminates the need for space-consuming control cabinets and the need for long screened motor cables is significantly reduced.

PAGE 32



VLT® Low Harmonic Drive

Meets the toughest harmonic requirements under all load/grid conditions. The Danfoss VLT® Low Harmonic Drive is the first solution combining an active filter and a drive in one package. The VLT® Low Harmonic Drive continuously regulates harmonic suppression according to the load and grid conditions without affecting the connected motor.



VLT® 12-Pulse Drives

A robust and cost effective harmonic solution for the higher power range. The Danfoss VLT® 12-pulse drive offers reduced harmonics for demanding industry applications above 300 HP. The VLT® 12-pulse is a high efficiency variable frequency converter which is built to the same modular design as the popular 6-pulse VLT® drives.



VLT® Advanced Active Filter AAF 006

A flexible and adaptable solution for central or de-central harmonic mitigation. Danfoss Advanced Active Filters can compensate for individual VLT® drives as a compact integrated solution or can be installed as a compact stand-alone solution at a point of common coupling, compensating for multiple loads simultaneously. Danfoss Active Filters can operate at medium voltage level by means of a step-down transformer.



VLT® Advanced Harmonic Filter AHF 005/010

The Danfoss Advanced Harmonic Filters have been specially designed to match the Danfoss frequency converters. The solution is available in two variants, AHF 005 and AHF 010, connected in front of a Danfoss frequency converter, the harmonic current distortion generated back to the mains is reduced to 5% and 10% Total Harmonic Current Distortion at full load.



VLT® Common Mode Filters

Common mode filters are placed between the frequency converter and the motor. They are nano-crystalline cores that mitigate high frequency noise in the motor cable (shielded or unshielded) and reduce bearing currents in the motor.



VLT® Sine-Wave Filters

Sine-wave filters are placed between the frequency converter and the motor. They are low-pass filters that suppress the switching frequency component from the frequency converter and smooth out the phase-to-phase output voltage of the frequency converter to make it sinusoidal. This reduces the motor insulation stress, bearing currents and eliminates the switching acoustic noise from the motor.



VLT® dV/dt Filters

dV/dt filters are placed between the frequency converter and the motor. They are differential-mode filters that reduce motor terminal phase-to-phase peak voltage spikes and reduce the rise time to a level that lowers the stress on the insulation of motor windings. dV/dt filters are smaller, weigh less and have a lower price compared to sine-wave filters.



VLT® Motion Control Tool MCT 10

For managing drive parameters in systems, the Motion Control Tool MCT 10 is the perfect tool to handle all drive-related data.



VLT® MCT 31 Harmonics Calculation Software

With VLT® MCT 31, you can determine whether harmonics will be an issue in your installation when drives are added. VLT® MCT 31 estimates the benefits of adding various harmonic mitigation solutions from the Danfoss product portfolio and calculates system harmonic distortion.



VLT® Energy Box

With VLT® Energy Box software you can both theoretically in project face estimate and afterwards physically validate your real energy savings and reductions in your carbon footprint – from your desk.



VLT® Service – Your way

DrivePro™ is an efficient productivity programme tailored to meet your specific needs. All the necessary VLT® Service facilities are at your disposal, which will minimize downtime and increase productivity at your factory.

VLT® AutomationDrive



Perfect
for industrial automation, high dynamic applications, and safety installations

The VLT® AutomationDrive is a single drive concept that covers an entire range of applications, which is a major benefit in commissioning, operating and maintaining the equipment.

The modular open-technology platform that VLT® AutomationDrive is built on makes it exceptionally adaptable and programmable. Its configurable, user-friendly interface supports local languages and letters.

Pluggable options

The drive solution can be adapted to any application due to the flexible option structure. Numerous options are available and can be mounted and tested from factory or be plugged in later for change-over or upgrade.

Adapts to the future

The modular concept of VLT® AutomationDrive makes it highly adaptable to future features and options. Modularity offers the benefit of buying on a need-to-have basis without losing future possibilities.

Hot pluggable Control Panel

The Local Control Panel (LCP) can be plugged in directly or connected through a cable for remote commissioning. The LCP can be disconnected during operation and replaced with a blank cover. Settings are easily transferred via the LCP from one

Feature	Benefit
Reliable	Maximum uptime
Ambient temperature 50° C without derating	Less need for cooling or oversizing
Available in IP 00, 20, 21, 54, 55 and 66 enclosures	Suitable for harsh and wash down areas
Resistant to wear and tear	Low lifetime cost
Back-channel cooling for frame D, E and F	Prolonged lifetime of electronics
User-friendly	Saves commissioning and operating cost
Plug-and-Play technology	Easy upgrade and change over
Awarded control panel	User-friendly
Intuitive VLT® interface	Saves time
Pluggable cage clamp connectors	Easy connection
Exchangeable languages	User-friendly
Intelligent	
Intelligent warning systems	Warning before controlled stop
Smart Logic Control	Reduces need for PLC capacity
Advanced plug-in features	Easy commissioning
Safe stop	Safety cat. 3 (EN 954-1), PL d (ISO 13849-1), Stop cat. 0 (EN 60204-1)
STO: Safe Torque Off (IEC 61800-5-2)	SIL 2 (IEC 61508) SIL CL 2 (IEC 62061)
Intelligent heat management	Extends life of the drive

drive to another or from a PC to a drive with the VLT® Set-up Software MCT 10.

Awarded

VLT® AutomationDrive has received the Frost & Sullivan award for innovation and the iF Design Award for its user-friendliness.

Power range

3 x 200 – 240 V 1/3 – 50 HP
3 x 380 – 480/500 V 1/2 to 1200 HP
3 x 525 – 600 V 1 – 100 HP
3 x 525 – 690 V 11 – 1200 kW

Options

The following options are available:

Fieldbus options

- MCA 101 Profibus
- MCA 104 DeviceNet
- MCA 105 CanOpen
- MCA 120 PROFINET
- MCA 121 Ethernet IP
- MCA 122 Modbus TCP

I/O and feedback options

- MCB 101 General Purpose I/O
- MCB 102 Encoder
- MCB 103 Resolver
- MCB 105 Relay
- MCB 107 24 V input option for control voltage
- MCB 113 Extended Relay Card
- MCB 114 VLT® Sensor Input

VLT®Automation VT Drive PC

Software Tools

- MCT 10: Ideal for commissioning and servicing the drive including guided programming of cascade controller, real time clock, smart logic controller and preventive maintenance.
- MCT 31: Harmonics calculations tool.

Safety options

- MCB 108 Safety PLC interface (DC/DC converter)
- MCB 112 ATEX-PTC Thermistor Card

Brake chopper (IGBT) option

Connected to an external brake resistor, the built-in brake chopper limits the load on the intermediate circuit in the case the motor acts as a generator.

Motion Control Options

- MCO 305 Programmable Motion Controller
- MCO 350 Synchronizing Controller
- MCO 351 Positioning Controller
- MCO 352 Center Winder Controller

Power options

- Brake resistors
- Sine-Wave Filters
- dV/dt Filters
- Harmonic Filters (AHF)

Mains supply (L1, L2, L3)	
Supply voltage	200 – 240 V ±10% FC 301: 380 – 480 V ±10% FC 302: 380 – 500 V ±10%, 525 – 600 V ±10% 525 – 690 V ±10%
Supply frequency	50/60 Hz
True Power Factor (λ)	0.92 nominal at rated load
Displacement Power Factor (cos φ) near unity	(> 0.98)
Switching on input supply L1, L2, L3	Maximum 2 times/min.

Output data (U, V, W)	
Output voltage	0–100% of supply voltage
Output frequency	FC 301: 0.2 – 590 Hz (1/3 – 100 HP) FC 302: 0 – 590 Hz (1/3 – 100 HP) 0 – 590 Hz (125 to 1600 HP) 0 – 300 Hz (Flux mode)
Switching on output	Unlimited
Ramp times	1–3600 sec.

*Note: 160% current can be provided for 1 minute.
Higher overload rating is achieved by oversizing the drive.*

Digital inputs	
Programmable digital inputs	FC 301: 4 (5) / FC 302: 4 (6)
Logic	PNP or NPN
Voltage level	0–24 VDC

Note: One/two digital inputs can be programmed as digital output for FC 301/FC 302.

Analog input	
Analog inputs	2
Modes	Voltage or current
Voltage level	FC 301: 0 to +10 V FC 302: -10 to +10 V (scaleable)
Current level	0/4 to 20 mA (scaleable)

Pulse/encoder inputs	
Programmable pulse/encoder inputs	FC 301: 1 / FC 302: 2
Voltage level	0 – 24 V DC (PNP positive logic)

Digital output*	
Programmable digital/pulse outputs	FC 301: 1 / FC 302: 2
Voltage level at digital/frequency output	0 – 24 V

Analog output*	
Programmable analog outputs	1
Current range	0/4 – 20 mA

Relay outputs*	
Programmable relay outputs	FC 301: 1 / FC 302: 2

Cable lengths	
Max. motor cable lengths	FC 301: 150 ft / FC 302: 500 ft (screened/armoured) FC 301: 225 ft / FC 302: 1000 ft (unscreened/unarmoured)

**More analog and digital inputs/outputs can be added by options.*

Other accessories

- IP21/NEMA 1 Kit (convert IP20 to IP21)
- PROFIBUS adapter
- Sub-D9 Connector
- Decoupling plate for fieldbus cables
- USB connection cable to PC
- Panel Through option
- LCP panel mounting kit
- Mounting brackets
- Mains disconnect option

High power options

- IEC Emergency stop with Safety Relay
- Safety Stop with Safety Relay
- RFI Filters
- NAMUR terminals
- RCD
- IRM
- Mains shielding
- Regen terminals

VLT® AutomationDrive – continued

Current and power ratings

FC 300	kW				HP				Amp.				T2 200 – 240 V				T4/T5 380 – 480/500 V									
	HO		NO		HO		NO		HO		NO		IP 20	IP 21	IP 55	IP 66	Amp. HO		Amp. NO		IP 00	IP 20	IP 21	IP 54	IP 55	IP 66
	HO	NO	HO	NO	HO	NO	HO	NO	≤440 V	>440 V	≤440 V	>440 V														
PK25	0.25		0.33		1.8		A1*/A2	A2	A4/A5	A4/A5	1.3	1.2	1.3	1.2	A1*/A2	A1*/A2	A4/A5	A4/A5								
PK37	0.37		0.50		2.4						1.8	1.6	1.8	1.6												
PK55	0.55		0.75		3.5						2.4	2.1	2.4	2.1												
PK75	0.75		1.00		4.6						3	2.7	3	2.7												
P1K1	1.1		1.50		6.6						4.1	3.4	4.1	3.4												
P1K5	1.5		2.00		7.5						5.6	4.8	5.6	4.8												
P2K2	2.2		3.00		10.6						7.2	6.3	7.2	6.3												
P3K0	3		4.00		12.5						10	8.2	10	8.2												
P3K7	3.7		5.00		16.7						13	11	13	11												
P4K0	4.0		5.50								16	14.5	16	14.5												
P5K5	5.5	7.5	7.5	10	24.2	30.8	B3	B1	B1	B1	13	11	13	11	A2	A2	A5	A5								
P7K5	7.5	11	10	15	30.8	46.2	B4	B2	B2	B2	16	14.5	16	14.5	A3	A3										
P11K	11	15	15	20	46.2	59.4					24	21	32	27	24	21	32	27	B3	B1	B1	B1				
P15K	15	18	20	25	59.4	74.8	C3	C1	C1	C1	32	27	37.5	34			B1	B1								
P18K	18.5	22	25	30	74.8	88					37.5	34	44	40	37.5	34	44	40	B4	B2	B2	B2				
P22K	22	30	30	40	88	115	C4	C2	C2	C2	44	40	61	52			B2	B2								
P30K	30	37	40	50	115	143					61	52	73	65	61	52	73	65	C3	C1	C1	C1				
P37K	37	45	50	60	143	170	90	80	106	105	73	65	90	80			C1	C1								
P45K	45	55	60	75							90	80	106	105			106	105	C4	C2	C2	C2				
P55K	55	75	75	100			106	105	147	130			106	105												
P75K	75	90	100	125			147	130	177	160			147	130												
N90K	90	110	125	150			177	160	212	190			177	160												
N110	110	132	150	200			212	190	260	240	D3h	D3h	212	190	D1h	D1h										
N132	132	160	200	250			260	240	315	302			260	240												
N160	160	200	250	300			315	302	395	361			315	302												
N200	200	250	300	350			395	361	480	443	D4h	D4h	395	361	D2h	D2h										
N250	250	315	350	450			480	443	600	540			480	443												
P315	315	400	450	550			600	540	658	590			600	540												
P355	355	450	500	600			658	590	745	678	E2		658	590	E1	E1										
P400	400	500	550	650			695	678	800	730			695	678												
P450	450	500	600	650			800	730	880	780			800	730												
P500	500	560	650	750			880	780	990	890			880	780			F1/F3	F1/F3								
P560	560	630	750	900			990	890	1120	1050			990	890												
P630	630	710	900	1000			1120	1050	1260	1160			1120	1050												
P710	710	800	1000	1200			1260	1160	1460	1380			1260	1160			F2/F4	F2/F4								
P800	800	1000	1200	1350			1460	1380	1720	1530			1460	1380												
P900	900	1000																								
P1M0	1000	1200																								
P1M2	1200	1400																								
P1M4	Consult factory																									
P1M6	Consult factory																									

IP 00/Chassis	IP 20/Chassis	IP 21/Type 1	With upgrade kit	IP 54/Type 12	IP 55/Type 12	IP 66/NEMA 4X
---------------	---------------	--------------	------------------	---------------	---------------	---------------

Dimensions [Inches]

	A2	A2	A3	A4	A5	B1	B2	B3	B4	C1	C2	C3	C4	D1h	D2h	D3h	D4h	E1	E2	F1	F2	F3	F4
H	7.9	10.5	15.3	16.5	19.4	25.5	15.7	17.7	26.8	30.3	21.6	26.0	33.2	41.3	33.2	41.3	33.0	32.8	91.5	91.5	91.5	91.5	
W	2.9	3.5	5.1	7.9	9.5	6.5	9.1	12.1	14.5	12.1	14.5	12.8	16.5	9.8	13.8	86.5	67.1	61.8	77.2	85.0	85.0		
D	8.1	8.1	6.9	7.9	10.2	9.8	12.2	13.2	13.1	14.9	14.8	28.9	28.9	36.5	36.5	36.5	36.5						
H+	14.7				18.7			29.7	37.4														
W+	3.5	5.1			6.5			12.9	15.3														

Adding Brake IGBT, or Mains Option changes the frame size to D5h or D7h. Dimensions for these frames are: D5h: 50.3x12.8x15.0 and D7h: 76.0x16.5x15.2

For 575 V operation T7 drives must be up-sized one size.
 For example a P90K drive produces 90kW at 690 V, for 575 V operation use a P110 drive to produce 90 kW

FC 300	kW		HP		T6 525 – 600 V				T7 525 – 690 V				T7 525 – 690 V							
	HO	NO	HO	NO	Amp. HO		Amp. NO		IP20	IP 21	IP 55	IP 66	Amp. HO		Amp. NO		IP 00	IP20	IP21	IP 54/55
					≤550 V	>550 V	≤550 V	>550 V					550 V	690 V	550 V	690 V				
PK25	0.25		0.33																	
PK37	0.37		0.50																	
PK55	0.55		0.75																	
PK75	0.75		1.00				1.8	1.7												
P1K1	1.1		1.50				2.6	2.4												
P1K5	1.5		2.00				2.9	2.7	A3	A3	A5	A5								
P2K2	2.2		3.00				4.1	3.9												
P3K0	3		4.00				5.2	4.9												
P3K7	3.7		5.00																	
P4K0	4.0		5.50				6.4	6.1												
P5K5	5.5	7.5	7.5	10			9.5	9	A3	A3	A5	A5								
P7K5	7.5	11	10	15			11.5	11												
P11K	11	15	15	20	19	18	23	22	B3	B1	B1	B1	14	13	19	18				
P15K	15	18	20	25	23	22	28	27					19	18	23	22				
P18K	18.5	22	25	30	28	27	36	34	B4	B2	B2	B2	23	22	28	27		B4	B2	B2
P22K	22	30	30	40	36	34	43	41					28	27	36	34				
P30K	30	37	40	50	43	41	54	52					36	34	43	41				
P37K	37	45	50	60	54	52	65	62					43	41	54	52				
P45K	45	55	60	75	65	62	87	83	C3	C1	C1	C1	54	52	65	62		C3	C2	C2
P55K	55	75	75	100	87	83	105	100					65	62	87	83				
P75K	75	90	100	125	105	100	137	131	C4	C2	C2	C2	87	83	105	100				
N90K	90	110	125	150									113	108	137	131				
N110	110	132	150	200									137	131	162	155	D3h		D1h	D1h
N132	132	160	200	250									162	155	201	192				
N160	160	200	250	300									201	192	253	242				
N200	200	250	300	350									253	242	303	290	D4h		D2h	D2h
N250	250	315	350	450									303	290	360	344				
N315	315	355	450	550									360	344	418	400				
P355	355	400	500	600									395	380	470	450	E2		E1	E1
P400	400	450	550	650									429	410	523	500				
P450	450	500	600	650																
P500	500	560	650	750									523	500	596	570	E2		E1	E1
P560	560	630	750	900									596	570	630	630			E1	E1
P630	630	710	900	1000									659	630	763	730				
P710	710	800	1000	1200									763	730	899	850			F1/F3	F1/F3
P800	800	1000	1200	1350									889	850	988	945				
P900	900	1000											988	945	1108	1060				
P1M0	1000	1200											1108	1060	1317	1260			F2/F4	F2/F4
P1M2	1200	1400											1317	1260	1479	1415				

VLT®AutomationVTDrive



Perfect
for industrial pumps,
fans and blowers,
and compressors

Danfoss VLT® Drives' unequalled experience was used to make the AutomationVTDrive the perfect match for AC motor driven applications in modern water and wastewater systems – also for retrofitting.

The AutomationVTDrive is dedicated pumps, blowers and compressors in modern industrial applications. With a wide range of powerful standard and optional features,

The AutomationVTDrive provides the lowest overall cost of ownership for industrial VT applications.

Power range

- 3 x 200 – 240 V AC 1/3 – 60 HP
- 3 x 380 – 480 V AC 1/2 – 1350 HP
- 3 x 525 – 600 V AC 1 – 125 HP
- 3 x 525 – 690 V AC 11 – 1400 kW

Feature	Benefit
Dedicated features	
Modular Product concept with a wide variety of options	Lower initial investment – maximum flexibility field upgradeable possible
Dedicated pump functions	Simplifies programming and commissioning
Smart Logic Controller	Eliminates ancillary equipment reducing installed cost
Pump Cascade Controller	Lower equipment costs
Optional Safe Stop	Lower installed costs safe operation
Integrated DC Link	Eliminates external filter requirements
Intelligent Heat Management	Removes excessive heat promotes longer life
Energy saving	
VLT® efficiency	Saves energy
Automatic Energy Optimisation (AEO)	Reduces energy consumption 3% to 8%
Master/follower control	Saves up to 15% energy
Auto Tuning of Staging Speeds	Smoothens the staging and saves energy
Sleep Mode function	Saves energy
Reliable	
NEMA 1, NEMA 12 and NEMA 4X Indoor enclosures	Suitable for harsh wash down environments without the need for customized panels
Ambient temperature rating of 50°C without derating	Eliminates the need for expensive cooling solutions
Main disconnects and integral fusing	Reduces installed cost by eliminating panel space
Optional, built-in RFI suppression	Eliminates the need for external filtering devices
One Wire Safe Stop	Safe operation less wiring
Password protection	Reduce operator error
User-friendly	
Plug and Play Design	Easy upgrade and changeovers
Intuitive user interface	Time saved
Multiple language support	Displays all info in native language
Modular design	Enables fast installation of options
Auto tuning of PI-controllers	Eliminates errors

Options

A wide range of integrated options can be fitted in the drive:

Fieldbus options

- MCA 101 Profibus
- MCA 104 DeviceNet
- MCA 105 CanOpen
- MCA 120 PROFINET
- MCA 121 Ethernet IP
- MCA 122 Modbus TCP

I/O and feedback options

- MCB 101 General Purpose I/O
- MCB 105 Relay
- MCB 107 24 V input option for control voltage
- MCB 114 VLTR Sensor Input

Safety options

- MCB 108 Safety PLC interface (DC/DC converter)
- MCB 112 ATEX-PTC Thermistor Card

Brake chopper (IGBT) option

Connected to an external brake resistor, the built-in brake chopper limits the load on the intermediate circuit in the case the motor acts as a generator.

Power options

- Brake resistors
- Sine-Wave Filters
- dV/dt Filters
- Harmonic Filters (AHF)

24 V DC supply option (MCB 107)

Back-up option to keep the control system alive during mains loss.

Coated PCB available

For harsh environments, according to levels in IEC61721-3-3, standard 3C2, optional 3C3.

High power options

- IEC Emergency stop with Safety Relay
- Safety Stop with Safety Relay
- RFI Filters
- NAMUR terminals
- RCD
- IRM
- Mains shielding
- Regen terminals

Power options

We offer a wide range of external power options for use together with our drive in critical networks or applications:

- VLT® Low Harmonic Drive: Optimum reduction of harmonic distortion with built-in active filter.
- VLT® Advanced Harmonic Filter: For applications where reducing harmonic distortion is critical.
- dV/dt filter: For providing motor isolation protection.
- Sine wave filter (LC filter): For noiseless motor.

FC322 PC software tools

- MCT 10: Ideal for commissioning and servicing the drive including guided programming of cascade controller, real-time clock, smart logic controller, and preventative maintenance
- VLT® Energy Box: Comprehensive energy analysis tool. Energy consumption with and w/o drive can be calculated (drive payback time). Online function for accessing drives energy log.
- MCT 31: Harmonics calculations tool.

VLT® Automation VT Drive – continued

Mains supply (L1, L2, L3)	
Supply voltage	200 – 240 V ±10%, 380 – 480 V ±10%, 525 – 600 V ±10%, 525 – 690 V ±10%
Supply frequency	50/60 Hz
Displacement Power Factor (cos φ) near unity	(> 0.98)
True power factor (λ)	≥ 0.9
Switching on input supply L1, L2, L3	1 – 2 times/min.
Output data (U, V,W)	
Output voltage	0 – 100% of supply
Switching on output	Unlimited
Ramp times	0.1 – 3600 sec.
Output frequency (dependent on power size)	590 Hz
<i>Note: VLT® AQUA Drive can provide 110% current for 1 minute. Higher overload rating is achieved by oversizing the drive.</i>	
Digital inputs	
Programmable digital inputs	6*
Logic	PNP or NPN
Voltage level	0 – 24 VDC
<i>* Two of the inputs can be used as digital outputs.</i>	
Analog inputs	
Number of analog inputs	2
Modes	Voltage or current
Voltage level	-10 to +10 V (scaleable)
Current level	0/4 to 20 mA (scaleable)
Pulse inputs	
Programmable pulse inputs	2
Voltage level	0 – 24 VDC (PNP positive logic)
Pulse input accuracy	(0.1 – 110 kHz)
<i>* Two of the digital inputs can be used for pulse inputs.</i>	
Analog output	
Programmable analog outputs	1
Current range at analog output	0/4 – 20 mA
Relay outputs	
Programmable relay outputs	2 (240 VAC, 2 A and 400 VAC, 2 A)
Fieldbus Communication	
FC Protocol and Modbus RTU built-in (Optional: Modbus TCP, Profibus, DeviceNet, Ethernet IP)	
Ambient temperature	
Up to 55° C (50° C without derating)	

Dimensions [Inches]

	A2	A2	A3	A4	A5	B1	B2	B3	B4	C1	C2	C3	C4	D1h	D2h	D3h	D4h	E1	E2	F1	F2	F3	F4
H	7.9	10.5	15.3	16.5	19.4	25.5	15.7	17.7	26.8	30.3	21.6	26.0	33.2	41.3	33.2	41.3	33.0	32.8	91.5	91.5	91.5	91.5	91.5
W	2.9	3.5	5.1	7.9	9.5	6.5	9.1	12.1	14.5	12.1	14.5	12.8	16.5	9.8	13.8	86.5	67.1	61.8	77.2	85.0	85.0	85.0	85.0
D	8.1	8.1	6.9	7.9	10.2	9.8	12.2	13.2	13.1	14.9	14.8	28.9	28.9	36.5	36.5	36.5	36.5	36.5	36.5	36.5	36.5	36.5	36.5
H+		14.7				18.7			29.7	37.4													
W+	3.5	5.1				6.5			12.9	15.3													

Adding Brake IGBT, or Mains Option changes the frame size to D5h or D7h. Dimensions for these frames are: D5h: 50.3x12.8x15.0 and D7h: 76.0x16.5x15.2

VLT® 2800 Series



Perfect
for conveyors,
centrifuges, dosing
pumps, compressors,
and special
applications

The VLT® 2800 series has been developed for the low power market. The drive is extremely compact and prepared for side-by-side mounting. The concept is modular with a power module and a control module.

The VLT® 2800 series is designed for stable operation in industrial environments.

Power range

1/3 x 200 – 240 V 1/2 – 5 HP
3 x 380 – 480 V 3/4 – 25 HP
With 160% overload torque (normal overload)

Feature	Benefit
Automatic Motor Tuning	Ensure optimal match between drive and motor Increasing performance
PID-controller	Optimum process control
Interrupt start/stop	High repeatability of positional accuracy
Dry run detection	No need for specific detection equipment
Fieldbus communication	Allows for control and surveillance of the drives from a PC or a PLC Profibus and DeviceNet are available
Reliable	Maximum uptime
Built-in RFI filter	Compliance with the EMC standard EN 55011 1A
Enhanced sleep mode	Excellent control for shutting down the pump at low flow
Max. ambient temperature 45° C without derating	No external cooling or oversizing necessary
User-friendly	Saves commissioning and operating cost
Quick Menu	Easy to use
Pipe Fill mode	Prevents water hammering
Fieldbus communication	Allows for control and surveillance of the drives from a PC or a PLC Profibus and DeviceNet are available

PC software tools

- MCT 10: Ideal for commissioning and servicing the drive
- MCT 31: Harmonics calculations tool.

RFI filter

The RFI filter ensures that the frequency converter will not disrupt other electrical components that are connected to the mains and might cause operating disruption.

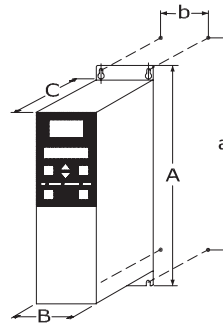
By fitting an RFI 1B filter module between the mains supply and the VLT® 2800, the solution complies with the EMC norm EN 55011-1B.

Specifications

Mains supply (L1, L2, L3)	
Supply voltage	200-240 V ±10%, 380-480 V ±10%
Supply frequency	50/60 Hz
Displacement Power Factor (cos φ) near unity	(> 0.98)
Switching on input supply L1, L2, L3	1-2 times/min.
Output data (U, V, W)	
Output voltage	0 – 100% of supply voltage
Switching on output	Unlimited
Ramp times	1-3600 sec.
Closed loop	0-132 Hz
Digital inputs	
For start/stop, reset, thermistor, etc.	5
Logic	PNP or NPN
Voltage level	0-24 VDC
Analog input	
No. of analog inputs	2
Voltage level	-10 to +10 V (scaleable)
Current level	0/4 to 20 mA (scaleable)
Pulse inputs	
No. of pulse inputs	2
Voltage level	0 – 24 V DC (PNP positive logic)
Pulse input accuracy	(0.1-110 kHz)
Digital output	
No. of digital outputs	1
Analog output	
Programmable analog outputs	1
Current range	0/4-20 mA
Relay outputs	
No. of relay outputs	1
Fieldbus communication	
RS485	
Ambient temperature	
50°C	

Mains	Type	Power		Current (Amps)	
		PN,M [kW]	HP	Output Amps	Input Amps
1 x 220-240V	2803	0.37	1/2	2.2	5.9
	2805	0.55	3/4	3.2	8.3
	2807	0.75	1	4.2	10.6
	2811	1.1	1.5	6.0	14.5
	2815	1.5	2	6.8	15.2
	2822*	2.2	3	9.6	22.0
	2840*	3.7	5	16.0	31.0
3 x 200-240V	2803	0.37	1/2	2.2	2.9
	2805	0.55	3/4	3.2	4.0
	2807	0.75	1	4.2	5.1
	2811	1.1	1.5	6.0	7.0
	2815	1.5	2	6.8	7.6
	2822	2.2	3	9.6	8.8
	2840	3.7	5	16.0	14.7
3 x 380-480V	2805	0.55	3/4	1.7	1.6
	2807	0.75	1	2.1	1.9
	2811	1.1	1.5	3.0	2.6
	2815	1.5	2	3.7	3.2
	2822	2.2	3	5.2	4.7
	2830	3.0	4	7.0	6.1
	2840	4.0	5	9.1	8.1
	2855	5.5	7.5	12	10.6
	2875	7.5	10	16	14.9
	2880	11.0	15	24	24.0
2881	15.0	20	32	32.0	
2882	18.5	25	37.5	37.5	

* Not available with RFI filter



Cabinet sizes [Inches]

Height				
	A	B	C	D
A	7.87	10.53	10.53	19.88
a	7.51	10.11	10.11	19.29
Width				
	B	C	D	
B	2.95	3.54	5.51	7.87
b	2.36	2.75	4.72	4.72
Depth				
	C			
C	6.61	6.61	6.61	9.6



VLT® Micro Drive



Perfect
 for industrial automation and general purpose applications, designed for OEM's

The VLT® Micro Drive is a general purpose drive that can control AC motors up to 30 HP. It's a small robust drive with high efficiency and reliability.

VLT® Micro Drive is a full member of the VLT® family sharing the overall quality of design, reliability and user-friendliness.

Due to high quality components and genuine VLT® solutions, VLT® Micro Drive is extremely reliable.

RoHS compliant

The VLT® Micro Drive is manufactured with respect for the environment, and it complies with the RoHS Directive.

Power range

- 1 phase 200–240 V AC.1/4 – 3 HP
- 3 phase 200–240 V AC.1/3 – 5 HP
- 3 phase 380–480 V AC.1/2 – 30 HP

Feature	Benefit
User friendly	
Minimum commissioning	Saves time
Mount – connect – go!	Minimum effort – minimum time
Copy settings via local control panel	Easy programming of multiple drives
Intuitive parameter structure	Minimal manual reading
Complies with VLT® software	Saves commissioning time
Self-protecting features	Lean operation
Process PI-controller	No need for external controller
Automatic Motor Tuning	Ensure optimal match between drive and motor
150% motor torque up to 1 minute	Plenty of brake-away and acceleration torque
Flying start (catch a spinning motor)	Doesn't trip when started on a spinning (freewheeling) motor
Electronic Thermal Relay (ETR)	Replaces external motor protection
Smart Logic Controller	Often makes PLC unnecessary
Built-in RFI filter	Saves cost and space
Energy saving	Less operation cost
Energy efficiency 98%	Minimises heat loss
Automatic Energy Optimization (AEO)	Saves 5-15% energy in HVAC applications
Reliable	Maximum uptime
Earth fault protection	Protects the drive
Over temperature protection	Protects the motor and drive
Short circuit protection	Protects the drive
Optimum heat dissipation	Longer lifetime
Unique cooling concept with no forced air flow over electronics	Problem-free operation in harsh environments
High quality electronics	Low lifetime cost
High quality capacitors	Tolerates uneven mains supply
All drives full load tested from factory	High reliability
Dust resistant	Increased lifetime
RoHS compliant	Protects the environment
Designed for WEEE	Protects the environment

Coated PCB standard

For harsh environments.

Power options

Danfoss VLT® Drives offers a range of external power options for use together with our drives in critical networks or applications:

- VLT® Advanced Harmonic Filter:
For applications where reducing harmonic distortion is critical.
- Built - In Brake Chopper in 2 HP and above.

PC software tools

- MCT 10: Ideal for commissioning and servicing the drive including guided programming of cascade controller, real-time clock, smart logic controller, and preventative maintenance
- VLT® Energy Box: Comprehensive energy analysis tool, shows the drive payback time.
- MCT 31: Harmonics calculations tool.

Specifications

Mains supply (L1, L2, L3)	
Supply voltage	1 x 200–240 V ± 10%, 3 x 200–240 V ± 10% 3 x 380–480 V ± 10%
Supply frequency	50/60 Hz
Displacement Power Factor (cos φ) near unity	(> 0.98)
Switching on input supply L1, L2, L3	1–2 times/min.
Output data (U, V, W)	
Output voltage	0–100% of supply voltage
Output frequency	0–200 Hz (VVC+ mode), 0–400 Hz (U/f mode)
Switching on output	Unlimited
Ramp times	0.05–3600 sec
Digital inputs	
Programmable digital inputs	5
Logic	PNP or NPN
Voltage level	0–24 VDC
Pulse inputs	
Programmable pulse inputs	1*
Voltage level	0–24 V DC (PNP positive logic)
Pulse input frequency	20–5000 Hz
* One of the digital inputs can be used for pulse inputs.	
Analog input	
Analog inputs	2
Modes	1 current/1 voltage or current
Voltage level	0–10 V (scaleable)
Current level	0/4 to 20 mA (scaleable)
Analog output	
Programmable analog outputs	1
Current range at analog output	0/4–20 mA
Relay outputs	
Programmable relay outputs	1 (240 VAC, 2 A)
Approvals	
CE, C-tick, UL	
Fieldbus communication	
FC Protocol, Modbus RTU	

Ordering numbers

Power [kW]	HP	200 – 240 VAC		440 – 480 VAC		
		Output (Amps)	1 ph.	3 ph.	Output (Amps)	3 ph.
0.18	1/4	1.2	132F 0001			
0.25	1/3	1.5		132F 0008		
0.37	1/2	2.2	132F 0002	132F 0009	1.1	132F 0017
0.75	1	4.2	132F 0003	132F 0010	2.1	132F 0018
1.5	2	6.8	132F 0005	132F 0012	3.4	132F 0020
2.2	3	9.6	132F 0007	132F 0014	4.8	132F 0022
3.0	4				6.3	132F 0024
3.7	5	15.2		132F 0016	8.2	132F 0026
5.5	7.5				11	132F 0028
7.5	10				14	132F 0030
11.0	15				21	132F 0058
15.0	20				27	132F 0059
18.5	25				34	132F 0060
22.0	30				40	132F 0061



Cabinet sizes

(mounting flange incl.)

[inches]	M1	M2	M3	M4	M5
Height	5.9	6.92	9.41	11.49	13.18
Width	2.76	2.95	3.54	4.92	6.49
Depth	5.82	6.61	7.63	9.48	9.76

.25" with Potentiometer

VLT® Control panel LCP 11 Without potentiometer: 132B0100
VLT® Control panel LCP 12 With potentiometer: 132B0101

VLT® Decentral Drive FCD 302



Perfect
 for applications with:
 conveyors, wash-
 down areas, and
 with a large number
 of drives

The VLT® Decentral Drive FCD 302 is the newest member of the VLT® FCD 300 family, based on the VLT® AutomationDrive FC 302 platform. It combines the key features of both products in a completely re-designed enclosure, made for best fit on direct machine mounting.

Simplicity and robustness have been taken into consideration during the design of the new VLT® Decentral Drive FCD 302. The results are a real user-friendly product with high performance and the highest degree of environmental protection.

De-central drives are meant for decentralized mounting right on the equipment where the need for space-consuming control cabinets, air conditioning and construction is eliminated. Also with the drives placed near - or directly on - the motor, there is no need for long screened motor cables.

One-box concept

All options are built-in as part of the core unit reducing the number of boxes to be mounted and connections to be terminated during installation. Consequently labor costs in mounting hours and risk of failures are dramatically reduced.

Power range

3 x 380 – 480 VAC.1/2 - 4 HP

Feature	Benefit
Reliable	Maximum uptime
Special painting treatment and smooth surface	Easy cleaning; no dirt trap
Pluggable twin-part design (installation box and electronic part)	Easy and fast service
Integrated lockable service switch available	Local disconnection possible
User-friendly	Saves commissioning and operating cost
Adapts to any brand of motor and geared motor, induction as well as permanent magnet motors	Easy and flexible installation
Integrated power and fieldbus looping terminals	Cable savings
Visible LEDs	Quick status check
Set-up and controlled through pluggable control panel, fieldbus communication and MCT10 PC software	Easy commissioning
Awarded control panel with on-board manual	Easy operation
Screwless spring-loaded terminals	Easy and fast connection
Integrated USB port	Direct connection to PC
Intelligent	Built-in feature
Smart Logic Control	Reduces need for PLC capacity
Safe Stop, STO: Safe Torque Off	Reduces the need for extra components
Intelligent warning systems	Warning before controlled stop

Enclosure

- IP 66 standard black
- IP 66 standard white
- IP 69K hygienic white
 (all enclosures are rated as Type 4X)

Integrated 24 V supply

24 V DC control supply is provided by the drive. Separate supply terminals have been made available for remote I/Os and devices.

Power looping

The new FCD 302 facilitates internal power looping. 6 Terminals for #10 AWG power cable inside the enclosure allows connection of multiple units in the same power branch-circuit.

Ethernet switch

Two RJ-45 ports are available in the drive for easy daisy chaining of Ethernet communication.

Fieldbus options

- PROFIBUS DP
- PROFINET
- Ethernet/IP

Application options

- Encoder
- Resolver

Hardware options

- Mounting brackets
- Service switch
- Internal circuit breaker
- M12 sensor plugs
- 24 V DC input for control supply
- Brake chopper
- Electromechanical brake control and supply

Dimensions

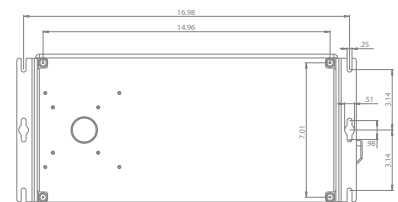
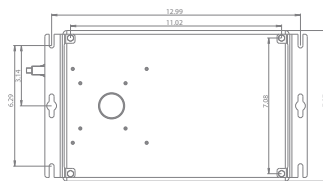
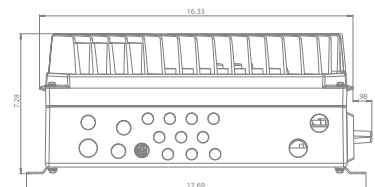
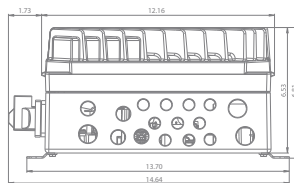
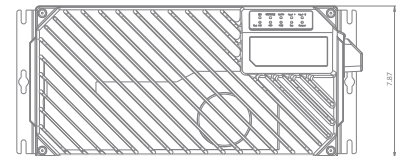
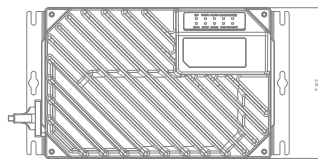
Small frame size

(0.37 – 2.2 kW/0.5 – 3.0 HP)

Large frame size

(0.37 – 3 kW/0.5 – 4.0 HP)

Mains supply (L1, L2, L3)	
Supply voltage	380 – 480 V ±10%
Supply frequency	50/60 Hz
True Power Factor (λ)	0.92 nominal at rated load
Displacement Power Factor ($\cos \phi$)	(>0.98)
Switching on input supply	2 times/min.
Output data (U, V, W)	
Output voltage	0 – 100% of supply
Output frequency	0 – 590 Hz 0 – 300 Hz (Flux mode)
Switching on output	Unlimited
Ramp times	0.01 – 3600 sec.
Digital inputs	
Programmable digital inputs	4 (6)
Logic	PNP or NPN
Voltage level	0 – 24 V DC
<i>Note: One/two digital inputs can be programmed as digital output</i>	
Analog inputs	
Number of analog inputs	2
Modes	Voltage or current
Voltage level	-10 to +10 V (scaleable)
Current level	0/4 – 20 mA (scaleable)
Pulse/encoder inputs	
Programmable pulse/encoder inputs	2
Voltage level	0 – 24 V DC (PNP positive logic)
Digital output	
Programmable digital/pulse outputs	2
Voltage level at digital/frequency output	0 – 24 V
Analog output	
Programmable analog outputs	1
Current range	0/4 – 20 mA
Relay outputs	
Programmable relay outputs	2
Integrated 24 V supply	
Max. load	600 mA



All measurements are in inches

VLT® Decentral FCD 300



Perfect

for applications with:
material handling
in food & beverage
industry, wash-down
areas, and many
more

The VLT® Decentral FCD 300 is a complete frequency converter designed for decentral mounting. It can be mounted on the machine or a wall near the motor, or directly on the motor itself.

The VLT® Decentral FCD 300 comes in very robust enclosure, with a special painting treatment to withstand harsh environments and typical cleaning agents used in wash-down areas. Its design offers a smooth cleaning-friendly surface.

The decentral design reduces the need for central control panels and eliminates the need for space-consuming motor control cabinets. The need for long screened motor cables is significantly reduced.

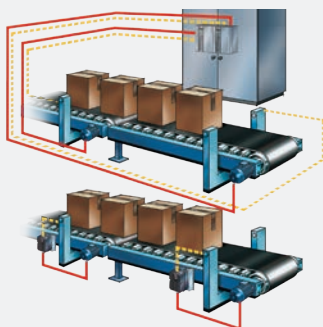
Power range

3 x 380 – 480 VAC 1/2 - 5 HP

Enclosure

IP 66/Type 4X (indoor)

Feature	Benefit
Reliable	Maximum uptime
Special surface treatment as protection against aggressive environments	Easy cleaning; no dirt trap
Twin part design (installation box and electronic part)	Easy and fast service
Integrated lockable service switch available	Local disconnection possible
Full protection is offered	Protects the motor and drive
User-friendly	Saves commissioning and operating cost
Adapts to any brand of motor and geared motor	Easy and flexible installation
Designed for power and fieldbus looping	Cable savings
Visible LEDs	Quick status check
Set-up and controlled through a remote control panel or fieldbus communication and dedicated MCT 10 set-up software	Easy commissioning



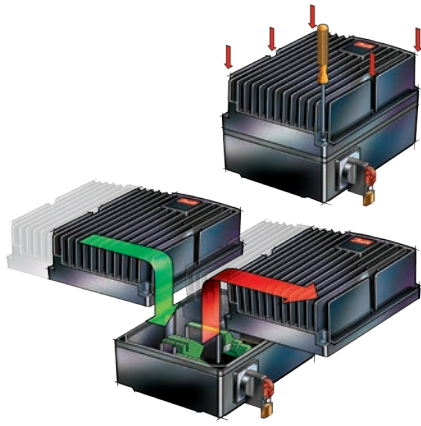
Central Vs. Decentral concept



Robust cleaning-friendly surface

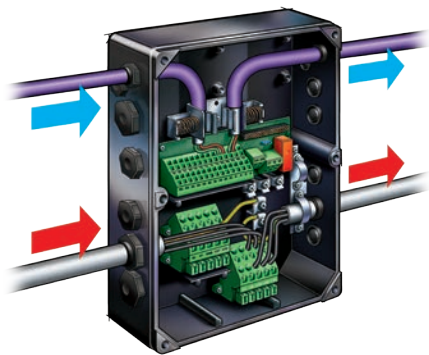


Hot pluggable LCP



Plug-and-drive

The bottom section contains maintenance-free Cage Clamp connectors and looping facilities for power and fieldbus cables. Once installed, commissioning and upgrading can be performed in no time by plugging in another control lid.



Flexible installation

The FCD 300 series facilitates internal power line and fieldbus looping. Terminals for 4 mm² power cables inside the enclosure allows connection of up to 10+ units.

Available options

- Service switch
- Connector for control panel
- M12 connectors for external sensors
- Han 10E motor connector
- Brake chopper and resistor
- 24 V external back up of control and communication
- External electromechanical brake control and supply

Specifications

Mains supply (L1, L2, L3)	
Supply voltage	3 x 380/400/415/440/480 V ± 10%
Supply frequency	50/60 Hz
Max. imbalance on supply voltage	± 2.0% of rated supply voltage
Switching on input supply	2 times/min.
Power Factor (cos φ)	0.9 / 1.0 at rated load
Output data (U, V, W)	
Output voltage	0–100% of supply
Overload torque	160% for 60 sec.
Switching on output	Unlimited
Ramp times	0.02 - 3600 sec.
Output frequency	0.2 - 132 Hz, 1 - 590 Hz
Digital inputs	
Programmable digital inputs	5
Voltage level	0–24 V DC (PNP positive logic)
Analog inputs	
Analog inputs	2 (1 voltage, 1 current)
Voltage level/Current level	0– ±10 V DC / 0/4–20 mA (scaleables)
Pulse inputs	
Programmable pulse inputs	2 (24 V DC)
Max. frequency	110 kHz (push-pull) / 5 kHz (open collector)
Analog output	
Programmable analog output	1
Current range	0/4–20 mA
Digital output	
Programmable digital/frequency output	1
Voltage/frequency level	24 V DC/10 kHz (max.)
Relay output	
Programmable relay output	1
Max. terminal load	250 V AC, 2 A, 500 VA
Fieldbus communication	
FC Protocol, Modbus RTU, Metasys N2	Built-in
Profibus DP, DeviceNet, AS-interface	Optional (integrated)
Externals	
Vibration test	1.0 g (IEC 60068)
Max. relative humidity	95 % (IEC 60068-2-3)
Ambient temperature	Max. 40°C (24 hour average max. 35°C)
Min. ambient temperature in full operation	0°C
Min. ambient temperature at reduced performance	-10°C
Approvals	CE, UL, C-tick, ATEX*

* Contact Danfoss for details

Technical data

VLT® Decentral FCD		303	305	307	311	315	322	330	335*	
Output current (3 x 380 – 480 V)	I _{INV(60s)} [A]	1.4	1.8	2.2	3.0	3.7	5.2	7.0	7.6	
	I _{MAX(60s)} [A]	2.2	2.9	3.5	4.8	5.9	8.3	11.2	11.4	
Output power (400 V)	S _{INV} [KVA]	1.0	1.2	1.5	2.0	2.6	3.6	4.8	5.3	
Typical shaft output	P _{M,N} [KW]	0.37	0.55	0.75	1.1	1.5	2.2	3.0	3.3	
	P _{M,N} [HP]	0.5	0.75	1.0	1.5	2.0	3.0	4.0	5.0	
Mechanical dimensions H x W x D (mm)	Motor mounting	244 x 192 x 142						300 x 258 x 151		
	Stand alone	300 x 192 x 145						367 x 258 x 154		

* t_{amb} max. 35 °C

VLT® DriveMotor FCM 300



Perfect
 for air handling unit
 fan wheels, pumps,
 simple conveyors



The VLT® FCM 300 Series is an integrated drive-motor solution which combines a VLT® frequency converter and a high standard quality motor in a single product.

The frequency converter is attached in place of the motor terminal box and it is no higher than the standard terminal box nor wider or longer than the motor.

Incorporated to a high standard quality motor, the VLT® DriveMotor FCM 300 is also available in a multitude of variants, individualized to meet customer requirements.

On the motor

The VLT® electronic motor control together with the motor totally eliminates motor cables and thereby minimises EMC problems. Heat from the drive is dissipated together with the motor heat.

Power range

3 x 380 – 480 VAC 3/4 - 10 HP

Enclosure

IP 55 (standard)
 IP 65/IP 66 (optional)

Feature	Benefit
Reliable	Maximum uptime
Robust enclosure	Withstands harsh environments
No power cable length limitation	Increased flexibility
Thermal protection	Total motor-inverter protection
Straightforward EMC compliance	No problem with electromagnetic interferences
User-friendly	Saves commissioning and operating cost
Motor and drive perfectly matched to each other	Saves commissioning time
No panel space required – the DriveMotor is placed on the machine	Saves space
Flexible mounting – foot/flange/face/foot-flange/foot-face	Meets customer requirements
Retrofit without mechanical changes	Easy service
Set-up and controlled through a remote control panel or fieldbus communication and dedicated MCT 10 set-up software	Easy commissioning

Motor type

2-pole
 4-pole

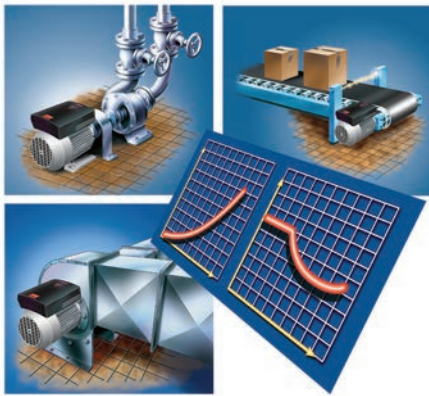
Mounting versions

B03 foot
B05 flange
B35 foot + flange
B14 face
B34 foot + face



Control panel

A Local Control Panel is available for operating, setup and diagnostics. The LCP can be handheld or mounted in a panel front (IP65).



Sleep Mode

In Sleep Mode the motor will stop in a no load situation. When the load returns, the frequency converter will restart the motor.

Also available:

Forced ventilation

For constant operation at low speed without torque reduction.

Motor drain holes

For applications where formation of condensate water might occur.

Sensorless Pump Control

– OEM version

Offers precise pressure (head) control without using a pressure transmitter.

Specifications

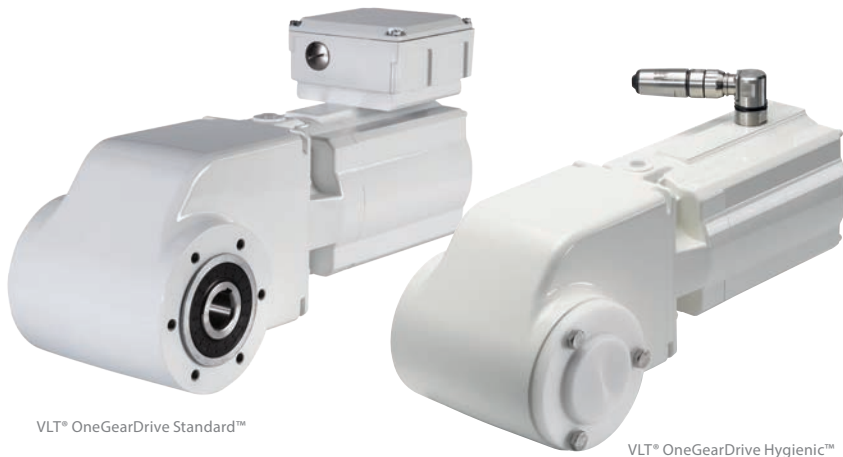
Mains supply (L1, L2, L3)	
Supply voltage	3 x 380/400/415/440/460/480V ± 10%
Supply frequency	50/60 Hz
Power factor (cos φ)	Max. 0.9/1.0 at rated load
Max. imbalance of supply voltage	± 2% of rated supply voltage
Switching on supply input	Once every 2 minutes
Control Characteristics (frequency converter)	
Frequency range	0 – 132 Hz
Overload torque	160% for 60 sec.
Resolution on output frequency	0.1%
System response time	30 msec. ± 10 msec.
Speed accuracy	± 15 RPM (open loop, CT mode, 4-pole motor 150 – 1500 RPM)
Digital inputs	
Programmable digital inputs	4
Voltage level	0 – 24 V DC (PNP positive logic)
Analog inputs	
Analog inputs	2 (1 voltage, 1 current)
Voltage/current level	0 – 10 V DC / 0/4 – 20 mA (scaleables)
Pulse input	
Programmable pulse input	1 (24 V DC)
Max. frequency	70 kHz (push-pull) / 8 kHz (open collector)
Analog/digital output	
Programmable analog/digital output	1
Current/voltage range	0/4 – 20 mA / 24 V DC
Relay output	
Programmable relay output	1
Max. terminal load	250 V AC, 2 A, 500 VA
Fieldbus communication	
FC Protocol, Modbus RTU	Built-in
Profibus DP	Optional (integrated)
Externals	
Vibration test	1.0 g (IEC 60068)
Max. relative humidity	95% (IEC 60068-2-3)
Ambient temperature	Max. 40° C (24 hour average max. 35° C)
Min. ambient temperature in full operation	0° C
Min. ambient temperature at reduced performance	-10° C

Technical data

FCM	305	307	311	315	322	330	340	355	375
Motor output									
[HP]	0.75	1.0	1.5	2.0	3.0	4.0	5.0	7.5	10.0
[kW]	0.55	0.75	1.1	1.5	2.2	3.0	4.0	5.5	7.5
Motor torque									
2-pole [Nm] 1)	1.8	2.4	3.5	4.8	7.0	9.5	12.6	17.5	24.0
4-pole [Nm] 2)	3.5	4.8	7.0	9.6	14.0	19.1	25.4	35.0	48.0
Frame size									
[mm]	80	80	90	90	100	100	112	132	132
Input current [A] 380 V									
2-pole	1.5	1.8	2.3	3.4	4.5	5.0	8.0	12.0	15.0
4-pole	1.4	1.7	2.5	3.3	4.7	6.4	8.0	11.0	15.5
Input current [A] 480 V									
2-pole	1.2	1.4	1.8	2.7	3.6	4.0	6.3	9.5	11.9
4-pole	1.1	1.3	2.0	2.6	3.7	5.1	6.3	8.7	12.3

1) at 400 V, 3000 RPM, 2) at 400 V, 1500 RPM

VLT® OneGearDrive



Perfect
for dry and wet areas, or clean room production areas

The compact design of the VLT® OneGearDrive makes it predestined for use in Material Handling and conveying systems. The drive has been designed especially for use in the food and beverage industry, although this new generation of transmission product offers significant benefits in all conveyor drive applications.

Compared to traditional systems the VLT® OneGearDrive covers most applications with one physical drive size and only three gear variants. Reducing the need for excessive inventory and easing engineering thanks to uniform mechanical dimensions. The high-efficiency bevel gearing with permanent-magnet three-phase synchronous motor offers high energy efficiency - up to 35% power savings compared to other bevel and worm gear systems.

The VLT® OneGearDrive comes in two versions. The OneGearDrive Standard™ For use in dry production areas. The OneGearDrive Hygienic™ For use in wet areas, aseptic areas with high cleaning intensity and Clean Room production areas.

In both versions the complete smooth, easy to clean surface without cooling fins prevents pockets of dirt from forming and allows cleansing agents to drain off freely. The fanless motor avoids the risk of air-borne germs and dirt particles being drawn in and then expelled back into the surrounding air.

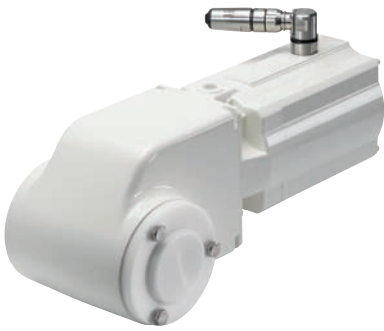
Feature	Benefit
High-efficiency bevel gear drive	High break away torque
High system efficiency incl. frequency converter	Energy Efficiency - up to 35% power savings compared to other bevel and worm gear systems
Permanent-magnet three-phase synchronous motor	Better than Super Premium Efficiency class IE4
Motor without cooling fins and fans	Ensure a measurable reduction of airborne germs
10-pole motor for continuous duty S1	High torque available
Available hollow shaft diameters: 30, 35 and 40 mm / 1 1/4, 1 7/16 and 1 1/2 inches	Flexible adaption to customer standards
Completely smooth enclosure leaves no crevices or dirt traps	Easy to clean Safe production
Motor and resolver connection with Danfoss CleanConnect® stainless steel circular connector (OGD Hygienic)	Safe connection in wet areas Fast replacement High clean-ability
Motor, resolver and brake connections via terminal box with CageClamp® technology (OGD Standard)	Fast, reliable connection Lower installation cost
Aseptic coating (standard for OGD Hygienic, optional for OGD Standard)	Resistant to cleansing agents and disinfectants (pH 2..12)
Optional Antibac® antibacterial coating	Reduced cleaning time and costs
Surface coating and food grade lubricants compliant with FDA and NSF requirements (OGD Hygienic)	Reliable and direct use In product handling areas. In conveying applications - 35000 operating hours
High degrees of protection: - IP 67 and IP 69K (OGD Hygienic) - IP 65 and IP 67 (OGD Standard)	Unrestricted use in wash down areas High protection in wash down areas
In combination with VLT® AutomationDrive FC 302 or VLT® Decentral Drive FCD 302	
System voltage 380 ... 500 V +/-10%	Widely usable
System frequency 50/60 Hz	Available as central and decentral solution
Output frequency 0 – 250 Hz	Wide speed control range
Operation with or without speed feedback (resolver option)	Open loop operation for typical conveyor applications Resolver option allows closed loop operation and synchronous / positioning applications

Product range

- Power rating.....2 – 4 HP
- Max speed..... 3000 RPM @ 250 Hz
- Frequency.....max. 250 Hz
- Current.....max. 7.2 A

Constants

- Torque..... kt ≈ 1,7 Nm/A
- Voltage.....kc = 120 V/1000 rpm



VLT® OneGearDrive Hygienic™

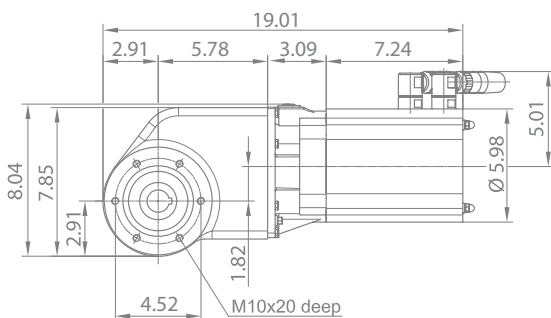
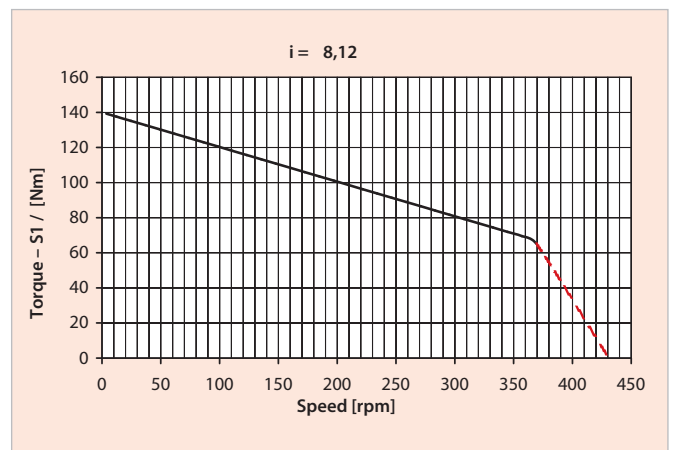
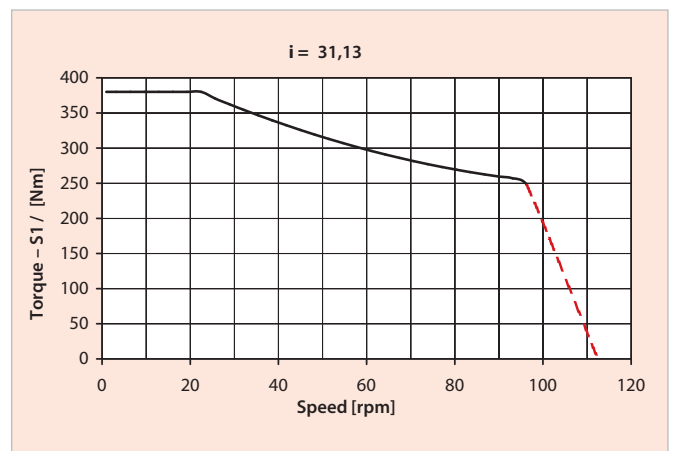
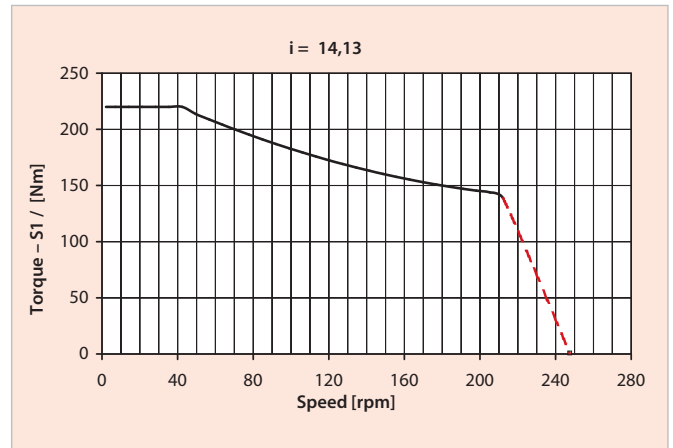
The OneGearDrive Hygienic™ complies with the requirements for best cleaning and hygienic design – with certification according to EHEDG (European Hygienic Engineering & Design Group).

It is certified as usable for clean rooms and aseptic filling by IPA (Fraunhofer institute) according to the dedicated “Air Cleanliness Classification” DIN EN ISO 14644-1.

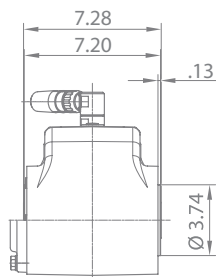
The OneGearDrive is designed to be integrated in the plant equipment and to withstand the same cleaning agents and physical cleaning as the rest of the aseptic production equipment.



Speed/ torque characteristics for gear ratios i = 31.13; i = 14.13 and i = 8.12 (max 3.0 kW)



Dimensions of Danfoss VLT® OneGearDrive Hygienic™



VLT® Soft Starter MCD 500



Perfect
 for pumps,
 conveyors, fans,
 mixers, compressors,
 centrifuges, mills,
 saws, and more

VLT® Soft Starter MCD 500 is a total motor starting solution. Current transformers measure motor current and provide feedback for controlled motor ramp profiles.

AAC, Adaptive Acceleration Control, automatically employs the best starting and stopping profile for the application.

Adaptive Acceleration Control means, that for each start and stop, the soft starter compares and adapts the process to the chosen profile fitting to the application.

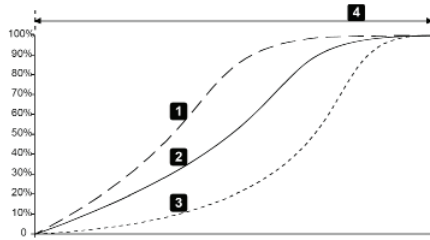
VLT® Soft Starter MCD 500 has a four line graphical display and a logic keypad making programming easy. Advanced setup is possible displaying operational status.

Three menu systems: Quick Menu, Application Setup and Main Menu provide optimum programming approach.

Power range

21 – 1600 A 10 – 1000 HP
 (1.2 MW inside Delta Connection)
 Versions for 200 – 690 VAC

Feature	Benefit
AAC Adaptive Acceleration Control	Automatically adapts to the chosen starting and stopping profile
Adjustable bus bars allow for both top and bottom entry (360–1600 A, 200–1000 HP)	Space saving, less cable cost and easy retrofitting
DC injection braking distributed evenly over three phases	Less installation cost and less stress on the motor
Inside Delta (6-wire connection)	Smaller soft starter can be selected for the application
Log menus, 99 events and trip log provide information on events, trips and performance	Eases analysis of the application
Auto Reset	Less down-time
Jog (slow-speed operation)	Application flexibility
Second-order thermal model	Allows motors to be used to their full potential without damage from overloading
Internal bypass contactors (21–215 A, 10 – 150 HP)	Saves space and wiring compared to external bypass Very little heat dissipates when running. Eliminates costly external fans, wiring or bypass contactors
Auto-start/stop clock	Application flexibility
Compact size – amongst the smallest in their class	Saves space in cabinets and other application setups
4-line graphical display	Optimum programming approach and setup for viewing operational status
Multiple programming setup (Standard Menu, Extended Menu, Quick Set)	Simplifies the programming, but still holding to maximum flexibility
Multiple languages	Serving the whole world



AAC Profiles

Fully featured Soft Starter for motors up to 1100 HP

- Total motor starting solution
- Advanced start, stop and protection features
- Adaptive Acceleration Control
- Inside Delta connection
- 4-line graphical display
- Multiple programming setup menus

Optional

- Modules for serial communication:
 - DeviceNet
 - Profibus
 - Modbus RTU
 - USB
- Remote operator kit
- PC software:
 - WinMaster
 - MCT10



- Start/stop, reset
- LED for start, run, trip
- Trip codes
- Current display
- Motor temperature display
- 4 – 20 mA output

Specifications

Mains voltage (L1, L2, L3)	
MCD5-xxxx-T5	200 VAC ~ 525 VAC (± 10%)
MCD5-xxxx-T7	380 VAC ~ 690 VAC (± 10%)
MCD5-xxxx-T7	380 VAC ~ 600 VAC (± 10%) (inside delta connection)
Control voltage (terminals A4, A5, A6)	
CV1 (A5, A6)	24 VAC/VDC (± 20%)
CV2 (A5, A6)	110~120 VAC (+ 10% / - 15%)
CV2 (A4, A6)	220~240 VAC (+ 10% / - 15%)
Mains frequency	50/60 Hz (± 10%)
Rated insulation voltage to earth	600 VAC
Rated impulse withstand voltage	4 kV
Form designation	Bypassed or continuous, semiconductor motor starter form 1
Short circuit capability	
Coordination with semiconductor fuses	Type 2
Coordination with HRC fuses	Type 1
MCD500-0021B to 0215B	Prospective current of 65 kA
MCD500-0245C	Prospective current of 85 kA
MCD500-1200C to 1600C	Prospective current of 100 kA
Electromagnetic capability (compliant with EU Directive 89/336/EEC)	
EMC Emissions (Terminals 13 & 14)	IEC 60947-4-2 Class B and Lloyds Marine No. 1 Specification
EMC Immunity	IEC 60947-4-2
Outputs	
Relay Outputs	10A @ 250 VAC resistive, 5A @ 250 VAC AC15 pf 0.3
Programmable Outputs	
Relay A (13, 14)	Normally open
Relay B (21, 22, 24)	Changeover
Relay C (33, 34)	Normally open
Analog Output (07, 08)	0 – 20 mA or 4 – 20 mA (selectable)
Maximum load	600 Ω (12 VDC @ 20 mA) (accuracy ± 5%)
24 VDC Output (16, 08) Maximum load	200 mA (accuracy ± 10%)
Environmental	
Protection MCD5-0021B ~ MCD5-0105B	IP 20 & NEMA, UL Indoor Type 1
Protection MCD5-0131B ~ MCD5-1600C	IP 00, UL Indoor Open Type
Operating temperature	-10° C to 60° C, above 40° C with derating
Storage temperature	-25° C to + 60° C
Operating Altitude	0 – 1000 m, above 1000 m with derating
Humidity	5% to 95% Relative Humidity
Pollution degree	Pollution Degree 3
Heat Dissipation	
During start	4.5 watts per ampere

Dimensions

Current rating [A]	Weight [lbs]	Height [in]	Width [in]	Depth [in]	Frame size
21, 37, 43 and 53	9.3	11.6	5.9	7.2	G1
68	9.9			8.4	
84, 89 and 105	10.8	17.2	10.8	9.8	G2
131, 141, 195 and 215	32.8			11	
245	52.7	18.1	15.4	11.9	G3
360, 380 and 428	110.5			11.9	
595, 619, 790 and 927	117.1	27.1	16.9	11.9	G4
1200, 1410 and 1600	264.6			14.3	
		33.7	23	14.3	G5

VLT® Compact Starter MCD 200



Perfect

for pumps, fans,
mixers, compressors,
conveyors, and many
more

The VLT® Compact Starter MCD 200 from Danfoss includes two families of soft starters in the power range from 10 - 150 HP.

The series offer easy DIN rail mounting for sizes up to 40 HP, 2-wire or 3-wire start/stop control and excellent starting duty (4 x I_e for 6 seconds).

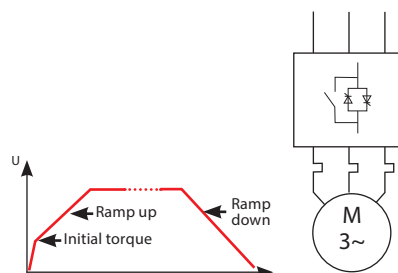
Heavy starting ratings at 4x I_e for 20 seconds.

Compatible with grounded delta power systems.

Power range
10 – 150 HP

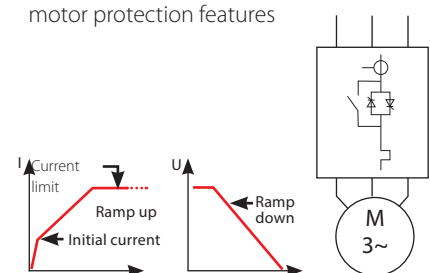
Feature	Benefit
Small footprint and compact size	Saves panel space
Built-in bypass	Minimizes installation cost and eliminates power loss Reduces heat build up. Savings in components, cooling, wiring and labor
Advanced accessories	Allows enhanced functionality
Advanced SCR Control Algorithms balances output waveform	Allowing more starts per hour, accepting higher load
User friendly	Save commissioning and operating cost
Easy to install and use	Saves time
Easy DIN rail mounting for sizes up to 30 kW	Saves time and space
Reliable	Maximum uptime
Essential motor protections (MCD 202)	Reduces overall project investment
Max. ambient temperature 50° C without derating	No external cooling or oversizing necessary

MCD 201



MCD 202

MCD 202 provides enhanced soft start functionality and various motor protection features



Soft Starter for motors up to 150 HP

- Total motor starting solution
- Start, stop and protection features
- Local programming keypad and display

Optional

- Modules for serial communication:
 - DeviceNet
 - Profibus
 - Modbus RTU
 - USB
- Remote operator kit
- PC software
- Pump application module



Remote operation kit

Remote Operator and display with 4–20 mA analog output proportional to motor current (MCD 202)
 Serial communication: Modbus RTU, AS-i, Profibus and DeviceNet.
 PC-based MCD set-up software.

Specifications

Mains supply (I1, L2, L3)	
Supply voltage	3 X 200 - 480 VAC (T6 model)
Supply frequency	45 – 66 Hz
Control voltage	CV1 - 24 VAC / VDC CV3 - 110 - 240 VAC & 380-440 VAC
Control inputs	
Control inputs	Start, Stop Reset upsh button on the unit
Relay outputs	
Relay outputs	1 x main contactor 1 x programmable* (Trip or Run)
Protections, MCD 201	
	Phase sequence Supply fault Shorted SCR
Protections, MCD 202	
	Motor thermistor input Motor temperature – thermal model Phase imbalance Phase sequence Excess start time Supply fault Shorted SCR
LED indications	
Indications	Ready/Fault Run
Ambient operating temperature	
Ambient temperature	-5 to 60°C (above 40°C without derating)
Standards approvals	
Approvals	CE, UL, C-UL, CCC, C-tick, Lloyds

Cabinet sizes

Power range (400 V)	10-40 HP	50-75 HP	100-150 HP
Height [inches]	7.99	8.46	9.44
Width [inches]	3.85	5.7	7.95
Depth [inches]	6.49	7.59	8.42

VLT® Soft Starter MCD 100



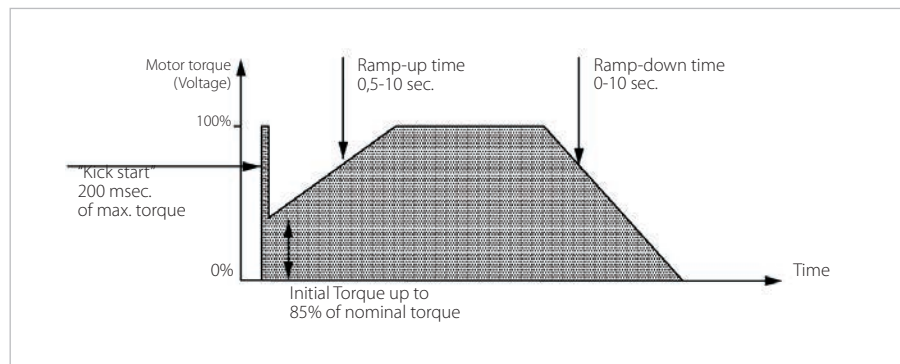
Perfect
 for smaller
 compressors,
 conveyor systems,
 and pumps

MCD 100 is a cost effective and extremely compact soft starter for AC motors.

A true “fit and forget” soft starter for DIN rail mount MCD 100 provides basic soft start and stop function.

- A robust semiconductor design – selection can be based on motor power which ensures easy selection.
- Can be used for an almost unlimited number of starts per hour without derating.
- A universal control voltage (24-480 V AC/V DC) – simplifies selection and keeps stock at a minimum.
- A “fit and forget” contactor design – simplifies installation and reduces required panel space.
- Digitally controlled rotary switches – secures precise settings and simplifies installation.
- Ratings for heavy duty as standard – simplifies installation and reduces the risk of breakdown

Feature	Benefit
Small footprint and compact size	Saves panel space
Selection can be based on motor power	Easy selection
Universal control voltage	Simplifies selection Keeps stock at a minimum
“Fit and forget” contactor design	Simplifies installation Reduces required panel space
User friendly	Save commissioning and operating cost
Easy to install and use	Saves time
Digitally controlled rotary switches	Secures precise settings and simplifies installation
Easy DIN rail mounting for sizes up to 15 HP	Saves time and space
Reliable	Maximum uptime
Robust semiconductor design	Reliable operation
Almost unlimited number of starts per hour without derating	Prevents unauthorized changes
Max. ambient temperature 50° C without derating	No external cooling or oversizing necessary



Timed voltage ramp

- Micro Soft Start Controller for motors up to 15 HP
- Extremely robust SCR design with heavy ratings as standard
- Unlimited number of starts per hour
- Contactor style design for easy selection, installation and commissioning

Power range

- MCD 100-0012 HP
- MCD 100-00710 HP
- MCD 100-01115 HP

All sizes are rated for line voltage up to 600 VAC.

Specifications

Mains supply (L1, L2, L3)	
MCD 100	3 x 208 VAC ~ 600 VAC (+10% / -15%)
Supply frequency (at start)	45 Hz – 66 Hz
Control circuit (A1, A2)	
MCD 100	24 – 480 VAC/VDC (-15% +10%)
Environmental	
Degree of protection MCD 100	IP 20
Operating temperatures	-5° C/+40° C (60° C with de-rating)
Pollution Degree	Pollution Degree 3
EMC Emission	
Equipment class (EMC)	Class A
Conducted radio frequency emission	
0.15 MHz – 0.5 MHz	< 90 dB (µV)
0.5 MHz – 5 MHz	< 76 dB (µV)
5 MHz – 30 MHz	80-60 dB (µV)
Radiated radio frequency emission	
30 MHz – 230 MHz	< 30 dB (µV/m)
230 MHz – 1000 MHz	< 37 dB (µV/m)
<i>This product has been designed for Class A equipment. Use of the product in domestic environments may cause radio interference, in which case the user may be required to employ additional mitigation methods.</i>	
EMC Immunity	
Electro static discharge	4 kV contact discharge, 8 kV air discharge
Radio-frequency electromagnetic field	
0.15 MHz – 1000 MHz	140 dB (µV)
Rated impulse withstand voltage (Fast transients 5/50 ns – Burst)	4 kV line to earth
Rated insulation voltage (Surges 1.2/50 µs – 8/20 µs)	4 kV line to earth, 2 kV line to line
Voltage dip and short time interruption	100 ms (at 40% nominal voltage)
Short Circuit	
Rated short-circuit current MCD 100-001	Normal fuses: 25 A gL/gG
SCR I2t rating for semiconductor fuses	72 A2s
Rated short-circuit current MCD 100-007	Normal fuses: 50 A gL/gG
SCR I2t rating for semiconductor fuses	1800 A2s
Rated short-circuit current MCD 100-011	Normal fuses: 80 A gL/gG
SCR I2t rating for semiconductor fuses	6300 A2s
Heat Dissipation	
MCD 100-001	Max. 4 watts
MCD 100-007 to MCD 100-011	2 watts/Ampere
Standards Approvals	
UL/C-UL	UL508
CE	IEC 60947-4-2

Dimensions

Model	Power size (HP)	Rated current (Amps)	Dimensions (in) H x W x D	Approvals
MCD100	2	3 A: 5-5:10 (AC 53b)	4.01 x 0.88 x 4.88	UL, CSA, CE
	10	15 A: 8-3: 100-3000 (AC 53a)	4.33 x 1.77 x 5.03	
	15	25 A: 6-5:100-480 (AC 53a)	4.33 x 3.54 x 5.03	

VLT® Low Harmonic Drive



Optimized
 for VLT® Automation
 VT Drive and VLT®
 AutomationDrive FC
 302

The Danfoss VLT® Low Harmonic Drive is the first solution combining an active filter and a drive in one package.

The VLT® Low Harmonic Drive continuously regulates harmonic suppression according to the load and grid conditions without affecting the connected motor.

The Total Harmonic Current Distortion is reduced to less than 3% at ideal conditions and to less than 5% at heavy distortion grids with up to 2% phase unbalance. As individual harmonics also fulfil toughest harmonic requirements, the VLT® Low Harmonic Drive meets all present harmonic standards and recommendations.

Unique features such as sleep mode and back channel cooling offers unmatched energy efficiency for Low Harmonic Drives.

The VLT® Low Harmonic Drive requires the same set-up and installation as a standard VLT® drive and out of the box it ensures optimum harmonic performance.

The VLT® Low Harmonic Drive has the same modular build-up as our standard high power drives and shares similar features: Built-in RFI filters, coated PCB and user-friendly programming.

Feature	Benefit
Reliable	Maximum uptime
No increased winding stress on motor	Longer motor lifetime Less initial cost (no output filter needed)
100% factory tested Coated PCBs	Low failure rate
Innovative cooling concept	Prolonged lifetime of electronics
User-friendly	Saves commissioning and operating cost
No extra wiring and set-up needed	Easy commissioning and low initial costs
Modular design	Easy serviceability
Full readout of grid conditions	Reduces needed harmonic testing
Energy saving	Lower operation costs
High efficiency Sleep mode and progressive switching freq.	Low running expenses
Independent of grid and load changes	Increased transformer efficiency Reduced cable losses

Voltage range

- 380 – 480 V AC 50 – 60 Hz

Power Range

150 – 850 HP High Overload/
 250 – 1000 HP Normal Overload
 (Matching drive frames D, E and F)

Enclosure

- IP 21/NEMA 1
- IP 54/NEMA 12

Options

The following options are available:

- RFI filters
- Disconnect
- Fuses
- Mains shielding
- Feedback and I/O options
- Fieldbus options
- dV/dt filters
- Sine wave filters

PC software

VLT® MCT 10 Setup Software

VLT® MCT 10 offers advanced programming functionality for all Danfoss drive products, greatly reducing programming and set-up time.

VLT® MCT 10 Basic (available free of charge from www.danfossdrives.com) allows access to a finite number of drives with limited functionality. The advanced edition, offering a higher level of functionality, is available from your Danfoss sales partner.

VLT® MCT 31 Harmonics Calculation Software

With VLT® MCT 31, you can determine whether harmonics will be an issue in your installation when drives are added.

VLT® MCT 31 estimates the benefits of adding various harmonic mitigation solutions from the Danfoss product portfolio and calculates system harmonic distortion. Furthermore the software provides quick indication of whether the installation complies with the most recognized harmonic norms and recommendations.

From www.danfossdrives.com you can download the free tool VLT® Harmonic Calculation MCT 31 – the most up-to-date version of the calculation software.

Specifications

THiD* at:	
– 40% load	< 5,5%
– 70% load	< 3,5%
– 100% load	< 3%
Efficiency* at:	
– 40% load	> 93%
– 70% load	> 95%
– 100% load	> 96%
True power factor* at:	
– 40% load	> 98%
– 70% load	> 98%
– 100% load	> 98%
Ambient temperature	40° C without derating
Cooling	Back-channel air cooling

* Measured at balanced grid without pre-distortion

Norms and recommendations	Compliance
IEEE519	Yes
IEC61000-3-4 (above 75 A)	Yes



380 – 460 VAC											
Normal Overload			High Overload			Frame	Dimensions		Weight		
Power		Current	Power		Current		H x W x D	IP 21		kg	lbs
kW	HP	[A]	kW	HP	[A]			kg	lbs		
160	250	315	132	200	260	D13	1740 x 1020 x 380 mm 68.5 x 49.6 x 14.9 inches		306.6	676	
200	300	395	160	250	315				306.6	676	
250	350	480	200	300	395				306.6	676	
315	450	600	250	350	480	E9	2000 x 1200 x 500 mm 78.7 x 56.7 x 19.7 inches		676.2	1491	
355	500	658	315	450	600				676.2	1491	
400	625	745	355	500	658				676.2	1491	
450	700	800	400	625	695	F18	2200 x 2800 x 600 mm 86.6 x 145.6 x 23.6 inches		1899	4187	
500	780	880	450	700	800				1899	4187	
560	875	990	500	780	880				1899	4187	
630	985	1120	560	875	990				1899	4187	
710	1100	1260	630	985	1120				1899	4187	

VLT® 12-pulse drive



Robust and cost effective harmonic solution for the higher power range. The Danfoss VLT® 12-pulse drive offers reduced harmonics for demanding industry applications above 350 HP.

The VLT® 12-pulse is a high efficiency variable frequency converter which is built with the same modular design as the popular 6-pulse VLT® drives. It is offered with similar drive options and accessories and can be configured according to customer need.

Together with the needed 30°-phase shifting transformer the solution provides durability and reliability at a low cost.

Under ideal grid conditions the solution eliminates the 5th, 7th, 17th and 19th harmonics and results in a THiD of around 12% at full load.

The needed transformer makes this solution ideal for applications where stepping down from medium voltage is required or where isolation from the grid is needed.

The Danfoss VLT® 12-pulse drive provides harmonic reduction without adding capacitive or inductive components which often require network analysis to avoid potential system resonance problems.

Feature	Benefit
Reliable	Maximum uptime
Maintenance free	No running expenses
Durability	Long lifetime
Coated PCBs	Environmental robustness
100% factory tested	Low failure rate
Back-channel cooling	Prolonged lifetime of electronics
Design	Easy operation and user-friendly set-up
Modular design	Easy serviceability
Same easy programming as a 6-pulse drive	User-friendly operation
Standard award-winning control panel (LCP) Available in 27 languages	Effective commissioning and operation

Power Range

- 350 - 1400 HP

Voltage Range

- 380 -500 VAC
- 525 - 690 VAC

Enclosure

- IP 21/NEMA Type 1
- IP 54/NEMA Type 12

Options

The following options are available:

- RFI filters
- Disconnect
- Fuses
- Mains shielding
- Feedback and I/O options
- Fieldbus options
- dV/dt filters
- Sine wave filters

PC software

VLT® MCT 10 Setup Software

VLT® MCT 10 offers advanced programming functionality for all Danfoss drive products, greatly reducing programming and set-up time.

VLT® MCT 10 Basic (available free of charge on www.danfossdrives.com) allows access to a finite number of drives with limited functionality. The advanced edition, offering a higher level of functionality, is available from your Danfoss sales partner.

VLT® MCT 31 Harmonics Calculation Software

With VLT® MCT 31 you can determine whether harmonics will be an issue in your installation when drives are added.

VLT® MCT 31 estimates the benefits of adding various harmonic mitigation solutions from the Danfoss product portfolio and calculates system harmonic distortion.

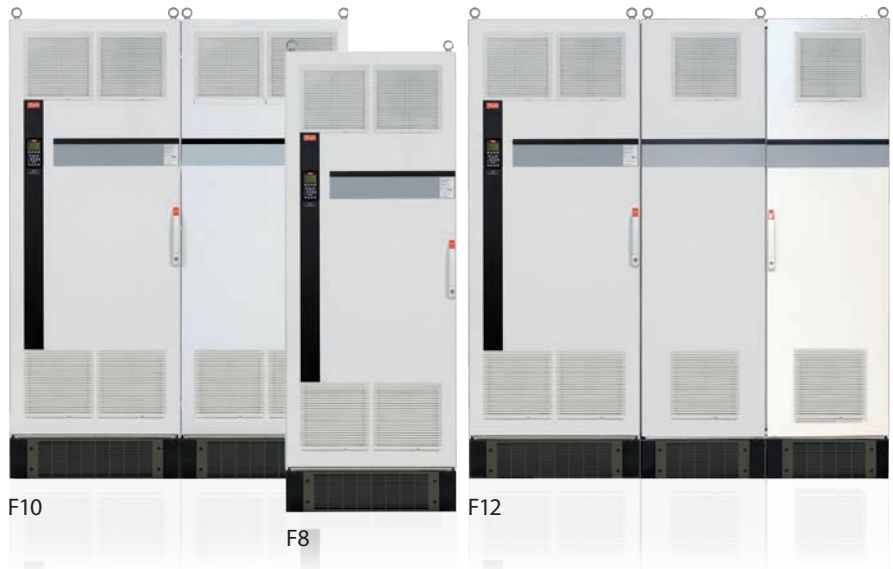
From www.danfossdrives.com you can download the free tool VLT® Harmonic Calculation MCT 31.

Specifications

THiD* at: – 40% load – 70% load – 100% load	20% 14% 12%
Efficiency* at: – 40% load – 70% load – 100% load	95% 97% 98%
True power factor* at: – 40% load – 70% load – 100% load	91% 95% 97%
Ambient temperature	45° C without derating
Cooling	Back-channel air cooling

* Measured at balanced grid without pre-distortion

Norms and recommendations	Compliance
IEEE519	Depends on grid and load conditions
IEC61000-3-4 (above 75 A)	Yes



460 V AC				690 V AC				Frame	Dimensions HxWxD IP 21 [in]
Normal Overload		High Overload		Normal Overload		High Overload			
Power [HP]	Current [A]	Power [HP]	Current [A]	Power [kW]	Current [A]	Power [kW]	Current [A]		
450	540	350	443	400	450	355	380	F8	89.76 x 31.49 x 23.89
500	590	450	540	500	500	400	410	F9 w. options cabinet	89.76 x 55.11 x 23.89
550	678	500	590	560	570	500	500		
600	730	550	678	630	630	560	570	F10	89.76 x 62.99 x 23.89
650	780	600	730	710	730	630	630	F11 w. options cabinet	89.76 x 86.61 x 23.89
750	890	650	780	800	850	710	730		
900	1050	750	890	900	945	800	850	F12	89.76 x 89.76 x 23.89
1000	1160	900	1050					F13 w. options cabinet	89.76 x 102.36 x 23.89
1200	1380	1000	1160	1000	1060	900	945		
1350	1530	1200	1380	1200	1260	1000	1160		
				1400	1415	1200	1260		

VLT® Advanced Active Filter AAF 006



Perfect
 for industrial automation, high dynamic applications and safety installations

A flexible and adaptable solution for central or de-central harmonic mitigation.

Danfoss Advanced Active Filters can compensate for individual VLT® drives or can be installed as a compact stand-alone solution at a common point of coupling, compensating for several loads simultaneously.

The filter ensures optimal harmonic suppression independent of the number of loads and their individual load profile. In addition the active filter corrects the power factor and balances the phase load providing an optimal energy utilization.

This improves the system efficiency and increases the grid robustness to avoid downtime.

The extensive re-use of proven VLT® components and the modular construction ensures a high reliability and at the same time offers high energy efficiency, back channel cooling and high enclosure grades without size increase.

Feature	Benefit
Reliable	Maximum uptime
100% factory tested Coated PCBs >90% components re-used from proven VLT® FC series	Low failure rate
Innovative cooling concept	Prolonged lifetime of electronics
User-friendly and flexible	Saves commissioning and operating cost
Innovative programming possibilities	Low running expenses
Modular design	Easy serviceability
Wide range of options	Low initial investment High degree of customisation
Energy saving	Lower operation costs
High efficiency Sleep mode and progressive switching freq. Power factor correction	Low running expenses

The VLT® Advanced Active Filter is easily controlled via the user-friendly LCP, sharing design and programming structure with the VLT® drives series.

Without dismantling existing installation, the VLT® Advanced Active Filters are easily retrofitted to the existing installation, where harmonics are increased because of enlarged employment of non-linear loads such as variable speed drives.

Voltage range

380 – 480 V AC 50 – 60 Hz

Current range

190 A, 250 A, 310 A, 400 A.
Up to 4 units can be paralleled for higher power.

Enclosure degree

- IP 21/NEMA Type 1
- IP 54/NEMA Type 12

Options

The following options are available:

- RFI filters
- Disconnect
- Fuses
- Mains shielding

PC software

VLT® MCT 10 Setup Software

VLT® MCT 10 offers advanced programming functionality for all Danfoss drive products, greatly reducing programming and set-up time.

VLT® MCT 10 Basic (available free of charge from www.danfossdrives.com) allows access to a finite number of drives with limited functionality.

The advanced edition, offering a higher level of functionality, is available from your Danfoss sales partner.

VLT® MCT 31 Harmonics Calculation Software

With VLT® MCT 31, you can determine whether harmonics will be an issue in your installation when drives are added.

VLT® MCT 31 estimates the benefits of adding various harmonic mitigation solutions from the Danfoss product portfolio and calculates system harmonic distortion. Furthermore the software provides quick indication of whether the installation complies with the most recognized harmonic norms and recommendations.

From www.danfossdrives.com you can download the free tool VLT® Harmonic Calculation MCT 31 – the most up-to-date version of the calculation software.

Specifications

THiD* at:	
- 40% load	< 7%
- 70% load	< 5,5%
- 100% load	< 5%
Efficiency* at:	
- 40% load	> 95%
- 70% load	> 98%
- 100% load	> 98%
True power factor* at:	
- 40% load	> 0,98
- 70% load	> 0,98
- 100% load	> 0,98
Ambient temperature	45° C
Cooling	Back-channel air cooling

* Measured at balanced grid without pre-distortion and with VLT® drive matching full load demand

Norms and recommendations	Compliance
IEEES19	Application and load dependent



380 – 480 V AC					
Total Current [A]	Max. Reactive [A]	Max. Harmonic [A]	Frame	Dimensions H x W x D mm [Inches]	Weight Kg [Lbs]
190	190	170	D14	1740 x 600 x 380 [68,2 x 33,5 x 15,0]	283 [623]
250	250	225	E1	2000 x 600 x 500 [78,7 x 33,5 x 19,4]	476 [1047]
310	310	280			498 [1096]
400	400	360			

Total Current [A]	Max. individual harmonic compensation [A]							
	I ₅	I ₇	I ₁₁	I ₁₃	I ₁₇	I ₁₉	I ₂₃	I ₂₅
190	119	85	55	48	34	31	27	24
250	158	113	72	63	45	40	36	32
310	196	140	90	78	56	50	45	40
400	252	180	115	100	72	65	58	50

VLT® Advanced Harmonic Filter



Perfect
for industrial automation, high dynamic applications and safety installations

Optimized harmonic performance with the VLT® FC series up to 350 HP.

The Danfoss Advanced Harmonic Filters have been specially designed to match the Danfoss frequency converters for unmatched performance and design.

Compared to traditional harmonic trap filters they offer a smaller foot print and higher harmonic reduction.

The solution is available in two variants, AHF 005 and AHF 010. When connected in front of a Danfoss VLT® frequency converter, the harmonic current distortion generated back to the mains is reduced to 5% and 10% Total Harmonic Current Distortion at full load.

With a >98% efficiency the passive Advanced Harmonic Filters offer cost effective and very robust harmonic solutions specifically for power up to 350 HP.

As stand-alone options the advanced harmonic filters feature a compact housing that is easily integrated into existing panel space. This makes them well-suited for retrofit applications with limited adjustments of the frequency converter.

Feature	Benefit
Reliable 100% factory tested Based on proven and tested filter concept	Maximum uptime Low failure rate
Energy saving High efficiency Electrically matched to the individual VLT® FC drives	Lower operation costs Low running expenses
Design Innovative coil design Side-by-side mounting Optimized for mounting in panels	Compact and aesthetic enclosure Smaller footprint Less wall space needed
Easy commissioning Enclosure size and color matches	Low commissioning costs Danfoss look and feel

Line Voltage

- 380 – 415 V AC (50 and 60 Hz)
- 440 – 480 V AC (60 Hz)
- 500 – 525V (50 Hz)*
- 690 V (50 Hz)*

Filter current

- 10 A – 480 A (380 – 415 V, 50/60 Hz)
- 10 A – 436 A (440 – 480 V, 60 Hz)
- (Modules can be paralleled for higher power)

Enclosure degree

- IP 20/IP 00

Options

The following options are available:

- P 21/NEMA 1 kit

PC software

VLT® MCT 10 Setup Software

VLT® MCT 10 offers advanced programming functionality for all Danfoss drive products, greatly reducing programming and set-up time.

VLT® MCT 10 Basic (available free of charge from www.danfossdrives.com) allows access to a finite number of drives with limited functionality.

The advanced edition, offering a higher level of functionality, is available from your Danfoss sales partner.

VLT® MCT 31 Harmonics Calculation Software

With VLT® MCT 31, you can determine whether harmonics will be an issue in your installation when drives are added.

VLT® MCT 31 estimates the benefits of adding various harmonic mitigation solutions from the Danfoss product portfolio and calculates system harmonic distortion. Furthermore the software provides quick indication of whether the installation complies with the most recognized harmonic norms and recommendations.

From www.danfossdrives.com you can down-load the free tool VLT® Harmonic Calculation MCT 31 – the most up-to-date version of the calculation software.

Specifications

	AHF 010	AHF 005
THiD* at: – 40% load – 70% load – 100% load	~ 12% ~ 11% < 10%	~ 7% ~ 6% < 5%
Efficiency* at 100% load	>98.5%	
True power factor* at: – 40% load – 70% load – 100% load	~ 81% ~ 96% > 99%	~ 80% ~ 95% > 98%
Ambient temperature	45° C without derating	
Cooling	Back-channel air cooling	

* Measured at balanced grid without pre-distortion

Norms and recommendations	Compliance
IEEE519	AHF 005 Yes AHF 010 Determined by Grid and load conditions
IEC61000-3-2 (up to 16 A)	Yes
IEC61000-3-12 (between 16 and 75 A)	Yes
IEC61000-3-4 (above 75 A)	Yes

Enclosures

380–415 V 50/60 Hz	440–480 V 60 Hz	Enclosure Type	
		AHF010	AHF005
10	10	X1	X1
14	14	X1	X1
22	19	X2	X2
29	25	X2	X2
34	31	X3	X3
40	36	X3	X3
55	48	X3	X3
66	60	X4	X4
82	73	X4	X4
96	95	X5	X5
133	118	X5	X5
171	154	X6	X6
204	183	X6	X6
251	231	X7	X7
304	291	X7	X7
325	355	X7	X7
381	380	X7	X8
480	436	X7	X8

Dimensions

Enclosure Type	Dimensions in inches		
	A (height)	B (width)	C (depth)
X1	31.07	7.48	8.11
X2	17.71	9.13	9.76
X3	23.38	14.88	9.52
X4	24.56	14.88	13.11
X5	29.09	16.45	13.11
X6	30.62	16.45	23.46
X7	35.78	18.42	17.67
X8	35.86	18.42	21.37

VLT® Common Mode Filters



Effective
 kit to reduce
 electromagnetic
 interference

High-frequency common-mode core kit reduce electromagnetic interference and eliminate bearing damage by electrical discharge.

High-frequency common-mode (HF-CM) cores are special nanocrystalline magnetic cores which have superior filtering performance compared to regular ferrite cores. They act like a common-mode inductor (between phases and ground).

Installed around the three motor phases (U, V, W), they reduce high-frequency common-mode currents. As a result, high-frequency electromagnetic interference from the motor cable is reduced. However, the core kit should not be used as the sole mitigation measure, and even when the cores are used, the EMC installation rules shall be followed.

Prevent motor bearing currents

The most important function is to reduce high-frequency currents associated with electrical discharges in the motor currents. These discharges contribute to the premature wear-out and failure of motor bearings. By reducing or even eliminating discharges, the wear-out of the bearings is reduced and the lifetime extended. Thus, maintenance and down-time costs are lowered.

Feature	Benefit
High-performance nanocrystalline magnetic material	Effective reduction of electrical discharges in the motor bearings Reduces bearing wear-out, maintenance costs and down-time Reduces high-frequency electromagnetic interference from the motor cable
Oval shape Scalable solution: longer cables handled by stacking more cores	Easy to install in restricted places such as the VLT® enclosure or the motor terminal box
Only 4 core sizes cover the entire VLT® power range	Easy logistics, fast delivery and comprehensible product program Allows the addition to a service tool-kit
Low investment	Cost-effective alternative to, for example, sine-wave filters if the only phenomena to be mitigated is bearing wear-out through electrical discharge

Ideal for retrofitting

Bearing current problems are most often discovered after commissioning. Therefore, the cores have an oval shape which makes them ideal for retrofitting and for installation in restricted places.

Only 4 variants cover the entire VLT® product range making it possible to carry these valuable aids in a service tool kit.

A flexible solution

The cores can be combined with other output filters, and especially in combination with dV/dt filters they offer a low cost solution for protection of both motor bearings and insulation.

Product range

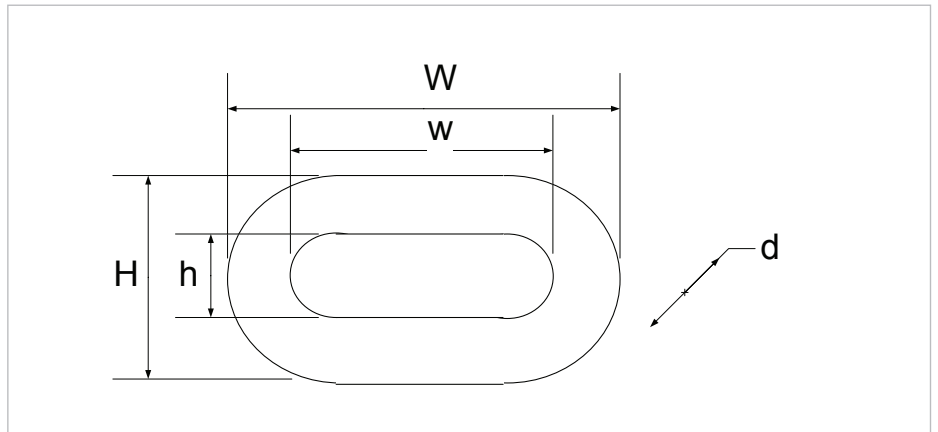
- Available for all power sizes from 1/4 – 1900 HP
- 4 core sizes cover the entire VLT® power range

HF-CM selector

The cores can be installed at the frequency converter's output terminals (U, V, W) or in the motor terminal box. When installed at the frequency converter's terminals, the HF-CM kit reduces bearing stress and high-frequency electromagnetic interference from the motor cable. The number of cores depends on motor cable length and frequency converter voltage. A selection table is shown to the right.

Cable length [inches]	A and B frame		C frame		D frame		E and F frame	
	T5	T7	T5	T7	T5	T7	T5	T7
150	2	4	2	2	2	4	2	2
350	4	4	2	4	4	4	2	4
500	4	6	4	4	4	4	4	4
1000*	4	6	4	4	4	6	4	4

* Longer cable lengths are easily handled by stacking more HF-CM cores.

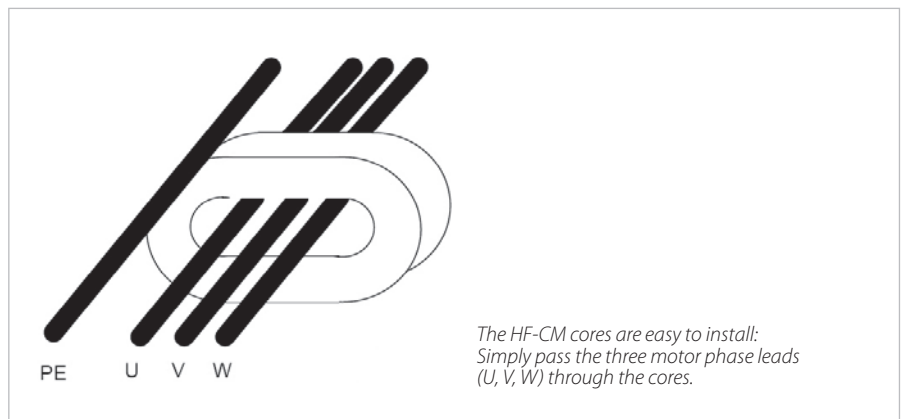


Ordering numbers and dimensions

Ordering numbers for the core kits (2 cores per package) are given in the table below.

VLT® Frame Size	Core dimension [mm]					Weight [lbs]	Packaging dimension [inches]
	W	w	H	h	d		
A and B	2.36	1.69	1.57	0.98	0.87	0.55	5.12 x 3.94 x 2.76
C	4.02	2.72	2.40	1.10	1.46	3.52	7.48 x 3.94 x 2.76
D	7.44	5.63	4.96	3.15	1.46	5.4	9.25 x 7.48 x 5.51
E and F	12.01	9.80	5.79	3.74	1.46	10.03	11.42 x 10.24 x 4.33

Installation



VLT® Power Option Sine-wave Filter



Perfect

match for applications with older motors, aggressive environments, frequent braking, 690 V with general purpose motors, motor cable lengths above 500 feet

Sine-wave output filters are low-pass filters that suppress the switching frequency component from the drive and smooth out the phase-to-phase output voltage of the drive to become sinusoidal. This reduces the motor insulation stress and bearing currents.

Sine-wave output filters are low-pass filters that suppress the switching frequency component from the drive and smooth out the phase-to-phase output voltage of the drive to become sinusoidal. This reduces the motor insulation stress and bearing currents.

By supplying the motor with a sinusoidal voltage waveform, the switching acoustic noise from the motor is also eliminated.

Thermal losses and bearing currents

The sinusoidal voltage supply to the motor reduces hysteresis thermal losses in the motor. Since the motor insulation lifetime is dependent on the motor temperature, the sine-wave filter prolongs the lifetime of the motor.

The sinusoidal motor terminal voltage from the sine-wave filter furthermore has the advantage of suppressing any bearing currents in the motor. This reduces the risk of flashover in the motor bearings and thereby also contributes to extended motor lifetime and increased service intervals.

Feature	Benefit
Supplies the motor with a sinusoidal voltage waveform	Prevents flashover in motor windings
Eliminates over-voltages and voltage spikes caused by cable reflections	Protects the motor insulation against premature aging
Reduces electromagnetic interference by eliminating pulse reflection caused by current ringing in the motor cable. This allows the use of unshielded motor cables in some applications.	Trouble-free operation
Eliminates acoustic noise in motor	Noiseless motor operation
Reduces high frequent losses in motor	Prolongs service interval of motor

Quality and Design

All filters are designed and tested for operation with the VLT® AutomationDrive. They are rated for the nominal switching frequency of the VLT® FC series and therefore no derating of the drive is needed.

The enclosure is designed to match the look and quality of the VLT® FC series drives.

Advantages

- Compatible with all control principles including flux and VVC+
- Parallel filter installation is possible for applications in the high power range

Range

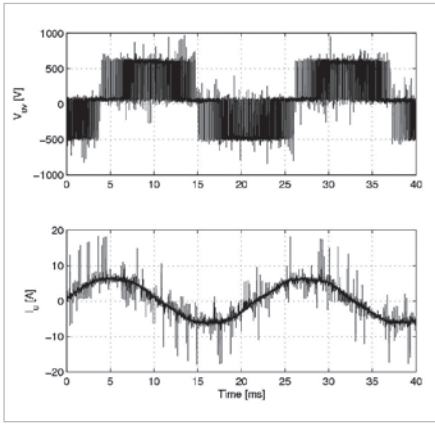
3 x 200 – 500 V, 2.5 – 800 A
3 x 525 – 690 V, 13 – 660 A

Enclosures

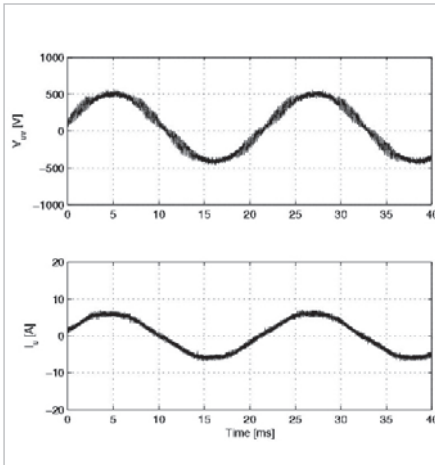
- IP 00 and IP 20 wall-mounted enclosure up to 75 A (500 V)/13 A (690 V)
- IP 23 floor-standing enclosure from 115 A (500 V)/28 A (690 V)

Mounting

- Side by side mount with the drive up to 75 A (500 V)



Voltage and current without filter

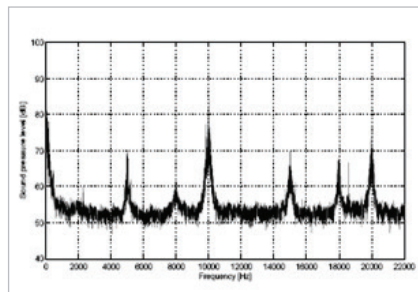


Voltage and current with filter

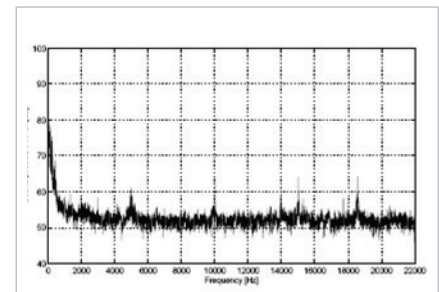
Specifications

Voltage rating	3 x 200 – 500 V and 3 x 525 – 690 V
Nominal current I _N @ 50 Hz	2.5 – 800A for higher power modules can be paralleled
Motor frequency	0 – 60 Hz without derating 100/120 Hz (up to 10 A) with derating
Ambient temperature	-25° to 45°C without derating
Min. switching frequency	f _{min} 1,5 kHz – 5 kHz depending on filter type
Max. switching frequency	f _{max} 8 kHz
Overload capacity	160% for 60 sec every 10 min.
Enclosure degree	IP 00/IP 20/IP 23 (ref. page 1)
Approvals	CE, UL508

Relative sound pressure measurements from the motor with and without sine-wave filter



No filter



With sine-wave filter

Performance Criteria	dV/dt filters	Sine-wave filters
Motor insulation stress	Up to 100 m (350 ft) cable (shielded/unshielded) complies with the requirements of IEC60034-17* (general purpose motors). Above this cable length the risk of "double pulsing" increases.	Provides a sinusoidal phase-to-phase motor terminal voltage. Complies with IEC-60034-17* and NEMA-MG1 requirements for general purpose motors with cables up to 500 m (1650 ft) (1 km (3,250 ft) for frame size D and above).
Motor bearing stress	Slightly reduced, mainly in high power motors.	Reduces bearing currents caused by circulating currents. Does not reduce common-mode currents (shaft currents).
EMC performance	Eliminates motor cable ringing. Does not change the emission class. Does not allow longer motor cables as specified for the frequency converter's built-in RFI filter.	Eliminates motor cable ringing. Does not change the emission class. Does not allow longer motor cables as specified for the frequency converter's built-in RFI filter.
Max. motor cable length	100 m ... 150 m (350 – 500 ft) With guaranteed EMC performance: 150 m (500 ft) screened Without guaranteed EMC performance: 150 m (500 ft) unshielded	With guaranteed EMC performance: 150 m (500 ft) shielded and 300 m (1000 ft) unshielded (only conducted emissions). Without guaranteed EMC performance: up to 500 m (1650 ft) (1 km (3250 ft) for frame size D and above).
Acoustic motor switching noise	Does not eliminate acoustic switching noise from the motor.	Eliminates acoustic switching noise from the motor caused by magnetostriction.
Relative size	15 – 50% (depending on power size).	100%
Relative price	50%	100%

*Not 690 V

VLT® Power Option dV/dt Filter



Perfect

match for applications with: short motor cables up to 500 ft, older motors, aggressive environments, or frequent braking

dV/dt filters reduce the dV/dt values on the motor terminal phase-to-phase voltage – an issue that is important for short motor cables.

dV/dt filters are differential-mode filters which reduce motor terminal phase-to-phase peak voltages spikes and reduce the rise time to a level that lowers the stress on the insulation of motor windings.

Compared to sine-wave filters, the dV/dt filters have a cut-off frequency above the switching frequency. The voltage at the motor terminals is still PWM pulse shaped, but the rise time and V_{peak} are reduced. They are smaller, weigh less and have a lower price compared to sine-wave filters. Furthermore, because of the smaller inductance and capacitance, the dV/dt filters introduce a negligible reactance between inverter and motor and are therefore suitable for high dynamic applications.

Superior compared to output chokes

Output chokes cause undamped oscillations at the motor terminals which increase the risk of double pulsing and over-voltages higher than twice the DC link voltage.

Feature	Benefit
Reduces dV/dt stresses	Increases motor service interval
Lowers the magnetic interference propagation on surrounding cables and equipment	Trouble-free operation
Low voltage drop makes dV/dt filters the ideal solution for highly dynamic applications with flux vector regulation	Small size and cost compared to sine-wave filters

The dV/dt filters are low-pass L-C filters with a well defined cut-off frequency. Therefore the ringing oscillations at the motor terminals are damped and there is a reduced risk of double pulsing and voltage peaks.

Quality and Design

All dV/dt filters are designed and tested for operation with the VLT® AutomationDrive FC 302, VLT® AQUA Drive FC 202, and the VLT® HVAC Drive FC 102. They are designed to match the look and quality of the VLT® FC series drives.

Advantages

- Compatible with all control principles, including flux and WC+
- Parallel filter installation is possible for applications in the high power range

Range

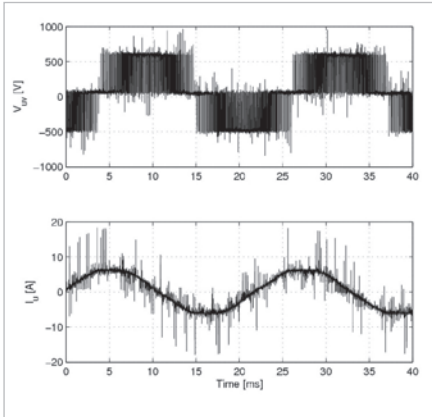
3 x 200 – 690 V (up to 880 A)

Enclosures

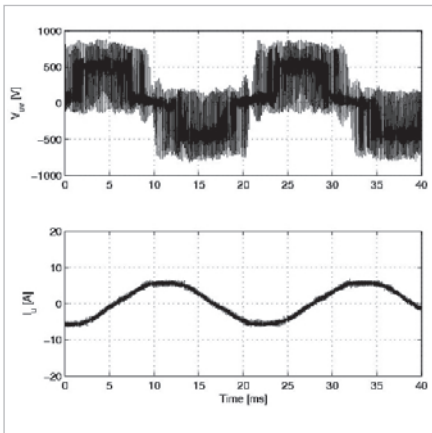
- IP 00 and IP 20/23 enclosure in the entire power range.
- IP 54/NEMA 12 enclosure available up to 180 A.

Mounting

- Side by side mounting with the drive
- Filters wall mounted up to 480 A (380 V) and floor mounted above that size



Voltage and current without filter

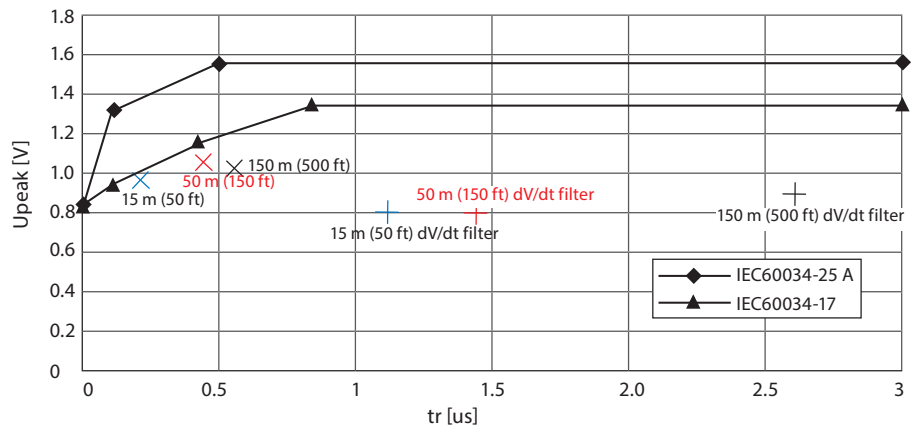


Voltage and current with filter

Specifications

Voltage rating	3 x 200 – 690 V
Nominal current I _N @ 50 Hz	44 – 880 A @ 200 – 380 V, 40 – 780 A @ 460 V 32 – 630 A @ 600 V and 27 – 630 A @ 690 V for higher power modules can be paralleled
Motor frequency	0 – 60 Hz without derating Max. 100 Hz (with derating)
Ambient temperature	-25° to 45° C without derating
Max. switching frequency	f _{sw} 1,5 kHz – 4 kHz depending on filter type
Mounting	Side-by-side
Overload capacity	160% for 60 sec every 10 min.
Enclosure degree	IP 00, IP 20/23 and IP 54
Approvals	CE, UL508

dV/dt limit curves



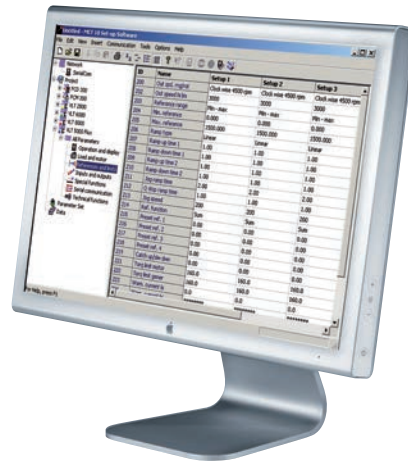
The dV/dt value decreases with the motor cable length whereas the peak voltage increases. Therefore it is recommended to use sine-wave filters in installations with motor cable lengths above 150 m (500 ft).

Performance Criteria	dV/dt filters	Sine-wave filters
Motor insulation stress	Up to 100 m (350 ft) cable (shielded/unshielded) complies with the requirements of IEC60034-17* (general purpose motors). Above this cable length the risk of "double pulsing" increases.	Provides a sinusoidal phase-to-phase motor terminal voltage. Complies with IEC-60034-17* and NEMA-MG1 requirements for general purpose motors with cables up to 500 m (1650 ft) (1 km (3,250 ft) for frame size D and above).
Motor bearing stress	Slightly reduced, mainly in high power motors.	Reduces bearing currents caused by circulating currents. Does not reduce common-mode currents (shaft currents).
EMC performance	Eliminates motor cable ringing. Does not change the emission class. Does not allow longer motor cables as specified for the frequency converter's built-in RFI filter.	Eliminates motor cable ringing. Does not change the emission class. Does not allow longer motor cables as specified for the frequency converter's built-in RFI filter.
Max. motor cable length	100 m ... 150 m (350 - 500 feet) With guaranteed EMC performance: 150 m (500 feet) screened Without guaranteed EMC performance: 150 m (500 feet) unshielded	With guaranteed EMC performance: 150 m (500 ft) shielded and 300 m (1000 ft) unshielded (only conducted emissions). Without guaranteed EMC performance: up to 500 m (1650 ft) (1 km (3,250 ft) for frame size D and above).
Acoustic motor switching noise	Does not eliminate acoustic switching noise from the motor.	Eliminates acoustic switching noise from the motor caused by magnetostriction.
Relative size	15 – 50% (depending on power size).	100%
Relative price	50%	100%

*Not 690 V

VLT® Motion Control Tool MCT 10

Perfect
 tool for
 – Commissioning
 – Servicing
 – Programming



The VLT® Motion Control Tool, MCT 10, is ideal for commissioning and servicing the drive including guided programming of cascade controller, real-time clock, smart logic controller and preventive maintenance.

The setup software provides easy control of details as well as a general overview of systems, large or small.

The tool handles all drive series, VLT® Advanced Active Filters and VLT® Soft Starter related data.

More efficient service organization

- Scope & logging: analyze problems easily
- Read out alarms, warnings and fault log in one view.
- Compare saved project with on-line drive
- Update drive or option firmware. One tool handling all

More efficient commissioning

- Off-line commissioning off site
- Save/send/mail projects anywhere
- Easy field-bus handling, multiple drives in project file. Enables service organization to be more efficient

Feature	Benefit
One PC tool for all tasks	Save time
"Explorer-like" view	Easy to use
Option programming	Save time
Online and offline commissioning	Flexible and save cost
Scope & logging	Easy and fast analyzing – less downtime
Alarm history	Easy fault finding
Multiple interfaces	Easy connection
USB connection	Easy connection
Flexible Ethernet connection	Easy connection – save time (utilizing all Danfoss Ethernet based fieldbus options)

Basic version

- Off –line commissioning (max. 4 drives)
- Scope & Graph (max. 2 channels)
- Multiple fieldbus support
- Alarm history in saved projects
- MCO 305 support
- Graphical Smart Logic Controller
- Graphical Clock functions, Timebased Actions, Preventive Maintenance and Basic Cascade Controller (FC 102/FC 202 only)
- Update drive support to support new firmware (future compatible)
- FC drive conversion (FC 102/FC 202 & FC 300 series)

Advanced version

- Basic version functionality +
- No limitation in number of drives
- Scope & Graph (max. 8 channels)
- Real Time Logging from drive
- Motor Database
- Graphical Sensorless pump control
- Graphical Extended Cascade Controller
- Full Customer Specific Initialization File support (to be supported in January)
- Full drive password protection support (To be supported in January)

Fieldbuses

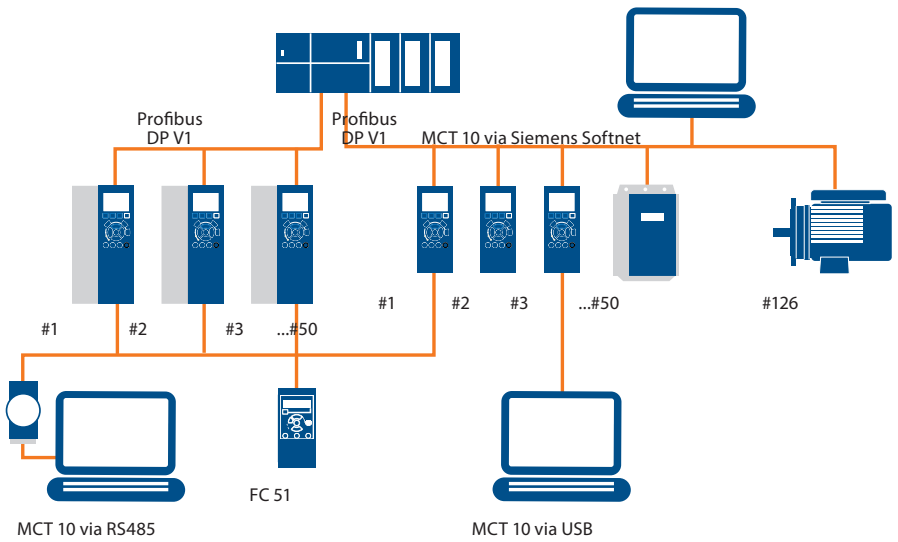
- ProfiBus DP-V1
- RS485
- USB
- Ethernet-TSC

Internet download

<http://www.danfossdrives.com>

System requirements

- MS Windows® NT 4.0, 2000, XP, Vista or 7
- Pentium III 350 MHz or better
- 512 MB RAM or better
- 200 MB free hard disk space
- CD-ROM drive
- VGA or XGA graphic adapter



VLT® MCT 31 Harmonics Calculation Software

Perfect
tool for application specific simulations, various power supply sources, norm compliance indication, project documentation



With VLT® MCT 31, you can determine whether harmonics will be an issue in your installation when drives are added. VLT® MCT 31 estimates the benefits of adding various harmonic mitigation solutions from the Danfoss product portfolio and calculates system harmonic distortion.

Save money and reduce running costs

On the basis that it is better to avoid a problem rather than cure one after it happens, it is preferable to calculate the effect of installing non-linear loads before doing so, to estimate the degree of harmonic distortion that may result. Trying to achieve this on a spreadsheet basis can be time consuming and inaccurate.

To help, Danfoss offers free to download, the VLT® Harmonic Calculation Tool MCT 31, a simple to use and fast software tool for calculating the harmonic disruption from your existing or intended drives installation.

A fast estimate is vital as, in this case, more is not better, simply more costly, so the MCT 31 can help save money when selecting harmonic mitigation solutions. Simply over-specifying a harmonic mitigation solution will lead to unnecessary initial cost escalation and increased running expenses.

Feature	Benefit
Explore-like view	Easy to use
Simple simulation model with less parameters	Easy to use and fast simulation – saves time
Configurable for various Power supply sources	Matching all customer needs
One tool supporting all Danfoss harmonic mitigation solutions	Matching all customer needs
Configurable Norm compliance indication	Save time
User configurable Report gation solutions	Project documentation
Simulate the setup before installation	Saves time and money. Prevent problems appear later

Calculate the harmonic disturbance

The MCT 31 tool can easily be used to evaluate the expected grid quality and includes a range of passive and active counter-measures which can be selected to ease system stress.

The power quality impact of electronic devices can be estimated in the frequency range up to 2.5 kHz, depending on the system configuration and standard limits.

The analysis includes indication of compliance with various standards and recommendations.

The Windows-like interface of the MCT 31 tool makes possible intuitive operation of the software. It is built with a focus on user-friendliness and the complexity is limited to system parameters that are normally accessible.

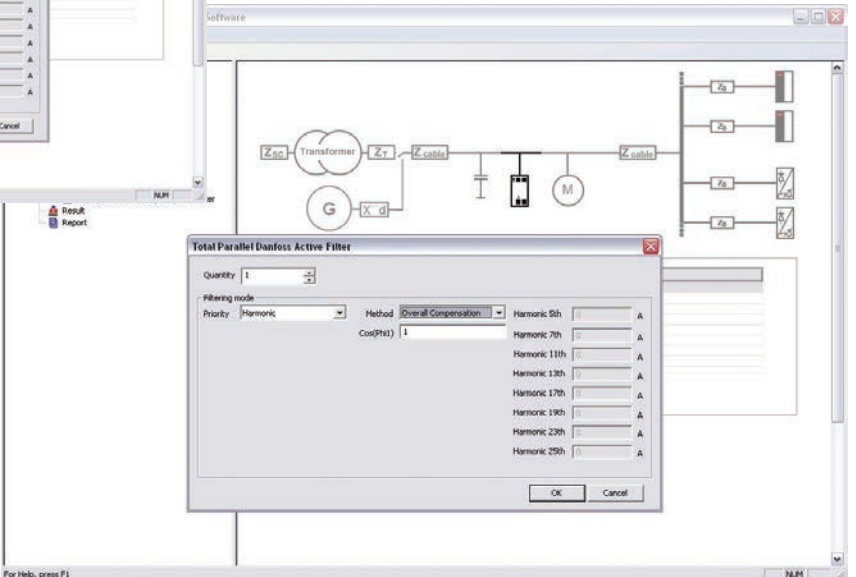
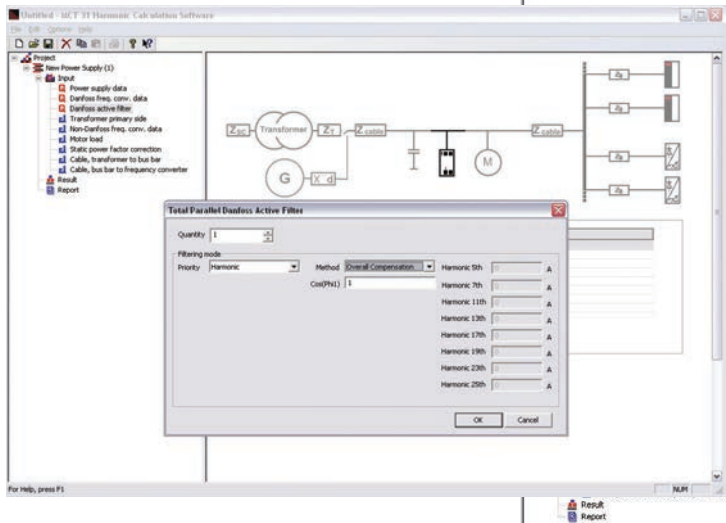
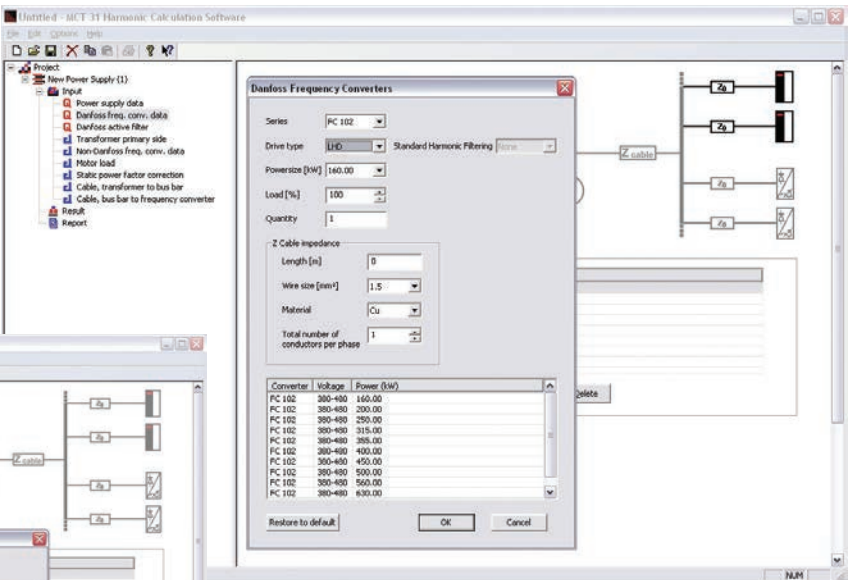
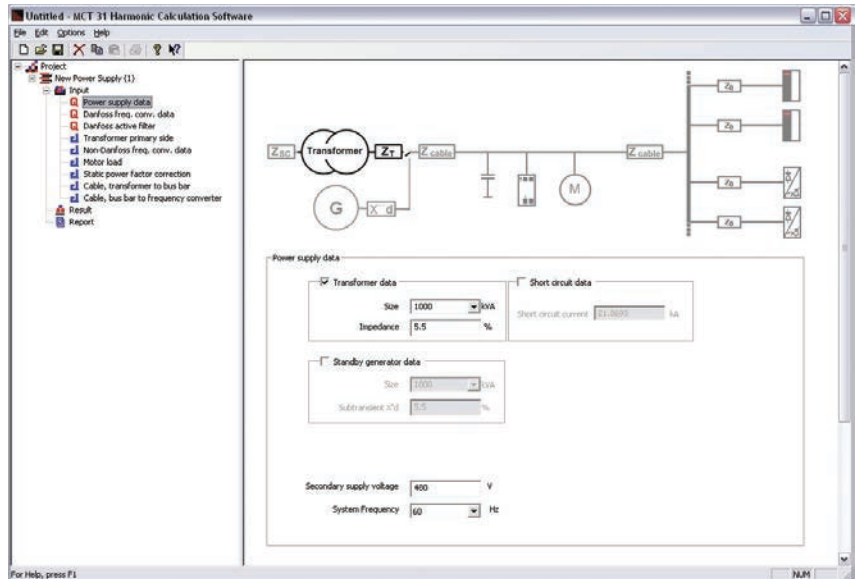
The Danfoss VLT® frequency converter and mitigation equipment data is already pre-loaded, allowing fast data entry.

Your local Danfoss consultant will be very happy to provide all the assistance you need to evaluate your power quality and guide the selection of the correct mitigation for your circumstances.

Internet download
<http://www.danfossdrives.com>

System requirements

- MS Windows NT 4.0, 2000, XP, Vista or 7
- Pentium III 350 MHz or better
- 512 MB RAM or better
- 200 MB free hard disk space
- CD-ROM drive
- VGA or XGA graphic adapter



VLT® Energy Box

Perfect
tool for:
 – Obtaining energy savings
 – Calculating pay-back time



With VLT® Energy Box software you can both theoretically in project face estimate and afterwards physically validate your real energy savings and reductions in your carbon footprint – from your desk.

VLT® Energy Box makes energy consumption calculations of fan, pump and cooling tower applications driven by VLT® Drives from Danfoss and compares it with alternative methods of flow control.

The program compares the total operation costs of various traditional systems compared to operation of the same system with a VLT® HVAC Drive.

With VLT® Energy Box software you can both theoretically in project face estimate and afterwards physically validate your real energy savings and reductions in your carbon footprint – also from your desk. The VLT® Energy Box communicates with the drives through the USB/RS485 protocol and can read all data about duty cycles and energy consumptions.

Data about duty cycles and energy consumptions can be requested remotely from the VLT® HVAC Drive, making it easy to monitor your energy savings and return on investment. Monitoring via fieldbus often makes energy meters ommissible.

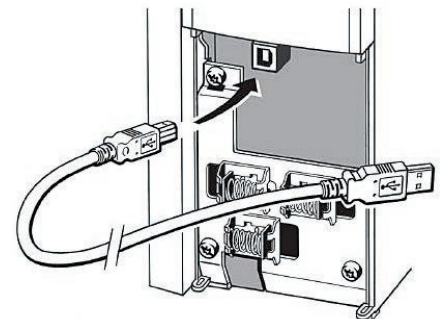
Feature	Benefit
Estimate savings	– Make purchase decision easy
Calculates pay back based on investments and annual costs	– Economical overview
Generates a report	– Easy communication
Special cooling tower mode based on climate data	– Easy calculation
Possible to adjust climate region to local conditions	– More accurate calculations
Download of energy data from the drive via serial communication and USB	– Facilitates the drives payback function – Visualize actual load profile
Covers several projects and systems in same file	– Generation of common project report

The software allows you to upload real trend and energy data, to present multiple systems in one report and to calculate energy consumption for cooling towers.

Complete financial analysis

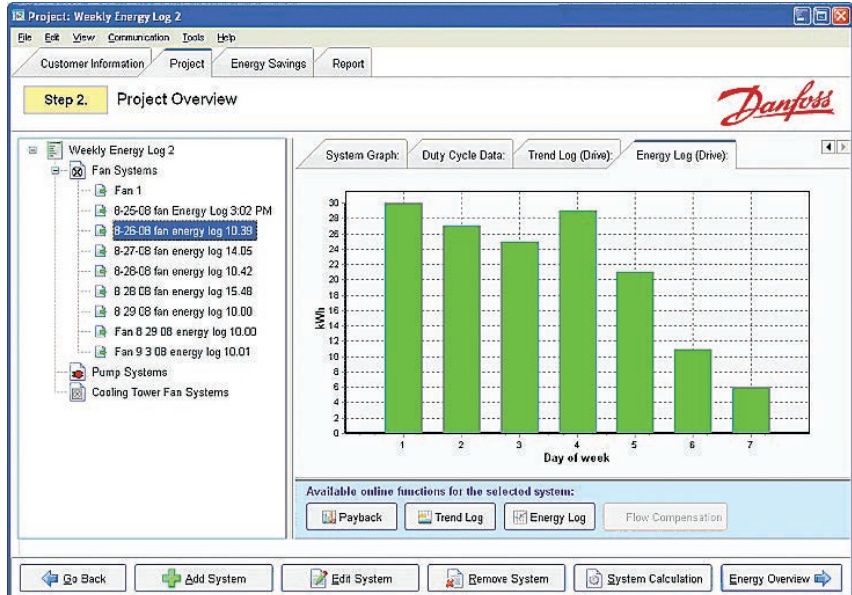
VLT® Energy Box provides a complete financial analysis including:

- Initial cost for the drive system and the alternative system
- Installation and hardware costs
- Annual maintenance costs and any utility company incentives for installation of energy conservation products
- Payback time and accumulated savings are calculated



No nonsense

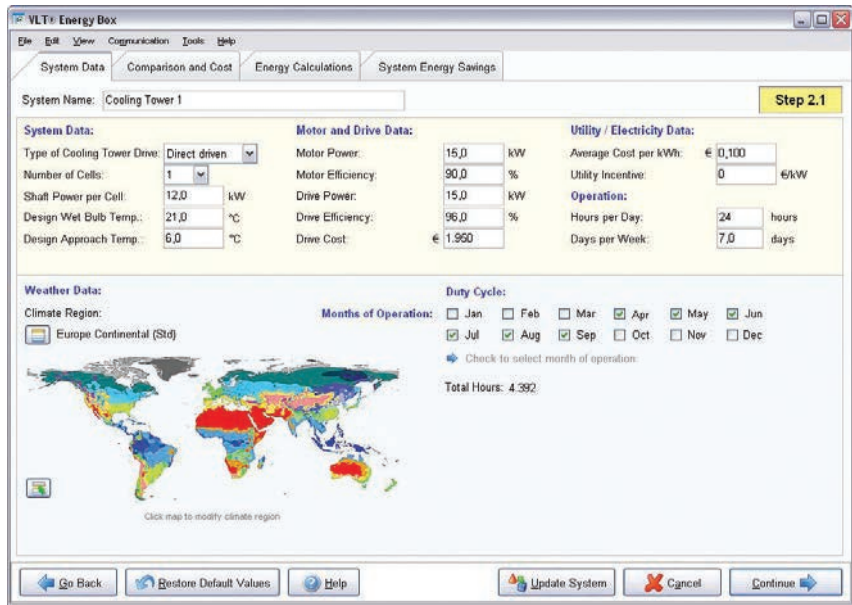
Since VLT® Energy Box both estimates and afterwards measures the real energy savings, it is a very trustworthy means for calculating projects involving many fans, pumps and cooling towers. You can simply install a single VLT® HVAC Drive and check the actual savings to exactly calculate the benefits from installing VLT® HVAC Drives on the other applications.



Considers local conditions

VLT® Energy Box use local weather data in its calculations for cooling towers.

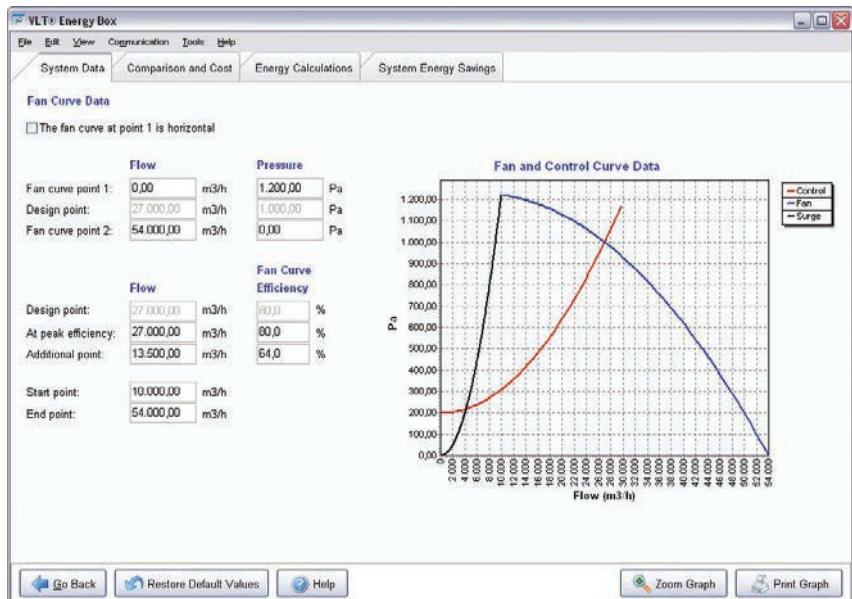
Data from weather zones around the Globe are pre-installed, but the user is free to adjust these data according to local conditions.



Specify the curve

Energy Box offers an advanced mode to specify the fan or pump curve in more detail.

The fan or pump (equipment) curve can be adjusted to match almost any shape. Choose flow and pressure points to generate an equipment curve similar to the published fan or pump curve over the relevant section of the curve using the mechanical flow control method. The program will not allow calculations in regions that are in a surge region or beyond the end of the curve.





Service and support VLT® DrivePro™

Service

24

hours a day 7 days a
week

Service you can rely on 24/7 – worldwide

Sales and Service

Contacts worldwide. Helping to optimize your productivity, improve your maintenance, and control your finances.

- 24/7 availability
- Local hotlines, local language and local stock

The Danfoss service organization is present in more than 100 countries – ready to respond whenever and wherever you need, around the clock, 7 days a week.

Find your local expert team on www.danfossdrives.com

Professional Drives Support

DrivePro Service Plans provide a complete drives support solution, freeing customers' time and resources to focus on their core business activities.

DrivePro services deliver increased efficiency and productivity of variable speed systems. DrivePro coverage plans provide a fixed-cost solution against unforeseen risks and quick response in the event of a malfunction. The nationwide network of DrivePro professionals ensures support is available locally.

Danfoss customers also have full access to the DrivePro call center. One toll-free call provides direct access to the Danfoss factory technical support specialists, 8:00 to 5:00 CST and emergency support 24 hours per day, 365 days a year.

DrivePro Service Plans

DrivePro-Extended Warranty

purchased with the drive provides the industry's longest coverage, up to six years.

DrivePro-SC Service Contract ensures long-term service coverage beyond the warranty period for drives up to 10 years old.

DrivePro-tection provides an additional measure of security by covering accidental drive damage such as lightning strikes.

DrivePro-SU Start-Up ensures maximum utilization and efficiency of Danfoss drives.

DrivePro Depot Repair Service provides professional reconditioning and factory testing of Danfoss drives at a flat rate.

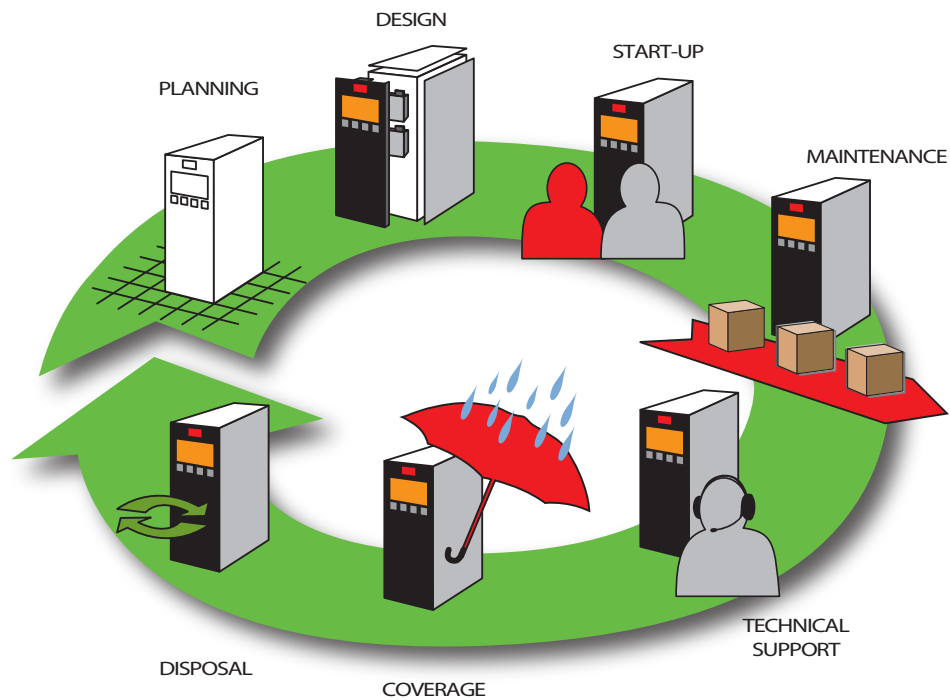
DrivePro Spare Parts ensure Danfoss drives high performance levels are retained after repairs or maintenance work is completed.

DrivePro PLUS drive replacement contracts provide a quick, turn-key solution for replacing aging drives that are no longer economical to repair. Professional installation, startup service and extended warranty are included.

DrivePro SmartStep provides a comprehensive and affordable migration program for customers with large numbers of legacy model or multiple brand drives. This program combines the benefits of the latest technology Danfoss drives with professional installation, startup and coverage for a fixed periodic fee. SmartStep is a very flexible and sensible way to upgrade drive systems on a budget.

DrivePro EnLease provides end customers with alternative financing for drives and services.

DrivePro-PM Preventive Maintenance provides scheduled service to optimize the variable speed system performance and ensure the longest possible drive life.



VLT® DrivePro™ SmartStep

Replace equipment proactively for total peace of mind

Upgrade sensibly

DrivePro™ SmartStep is a comprehensive replacement and service support program for customers to assure optimal efficiency and maximum uptime. It's a turn-key program to replace older drives, backed by professional service support.

DrivePro™ SmartStep advantages

Professional drive installation and start-up
Flexible replacement plan
Extended Warranty coverage

Designed for success

- Minimize down-time costs
- Maximize system reliability
- Provides the latest drive technology & performance
- Fits replacement drives within your budget

Available for application areas such as:

- Food & Beverage
- Industrial Automation
- Material Handling
- Oil & Gas



Danfoss DrivePro–tection provides the solution

Emergency response expense threatens your budget.

Downtime expense and hassle of many types of accidental drive damage are minimized.

One call provides quick and complete response from the leaders in variable frequency drive technology and support.

DrivePro–tection

DrivePro–tection coverage is available at the time of drive purchase for periods up to six years.

Coverage is also available for older, installed drives up to 10 years from date of manufacture. Contact Danfoss for details.

Coverage

- Line anomalies—including lightning strikes
- Load anomalies
- Accidental exposure to moisture or corrosives
- Accidental collision or other physical damage
- Defects in product material or workmanship
- Normal product wear

Product misapplication, vandalism, facility disasters, chronic problems due to the application and shipping damage are not included

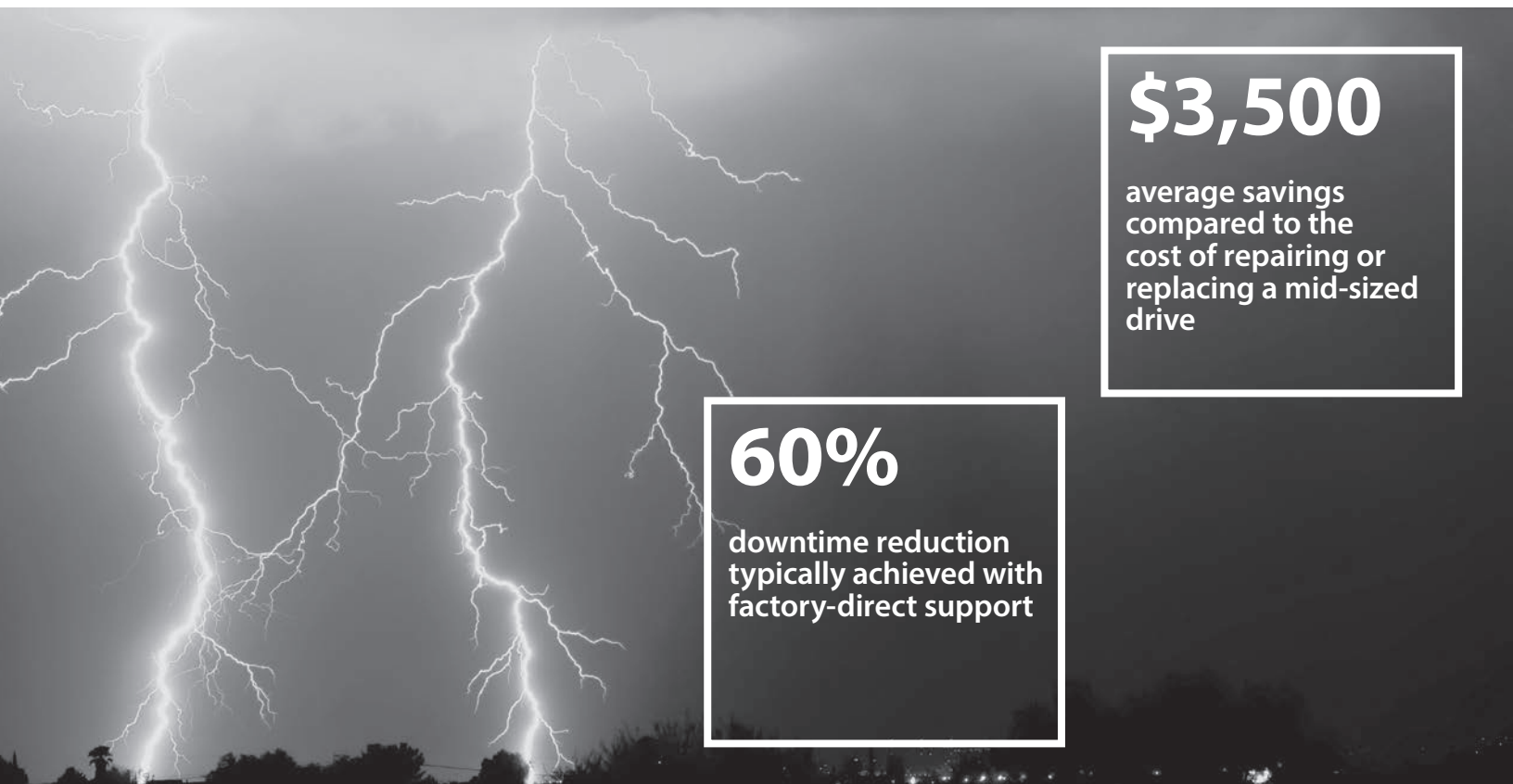
Support

Depot Repair is provided at a Danfoss North America factory repair facility

- Replacement drive material
- Drive repair labor
- Return freight

Onsite support available on a charge/call basis

Onsite Service DrivePro–tection contracts available for some Industrial applications. Contact Danfoss DrivePro sales for details.



\$3,500

average savings compared to the cost of repairing or replacing a mid-sized drive

60%

downtime reduction typically achieved with factory-direct support

Configure your VLT® drive

The Drive Configurator gives you the possibility to configure (select) the right drive for your purpose. You don't have to consider if the combinations are valid, while the configurator only gives you valid selections.

Drive Configurator

The Danfoss Drive Configurator is an advanced but easy-to-use tool to configure the Danfoss VLT® frequency converter that exactly matches your requirements.

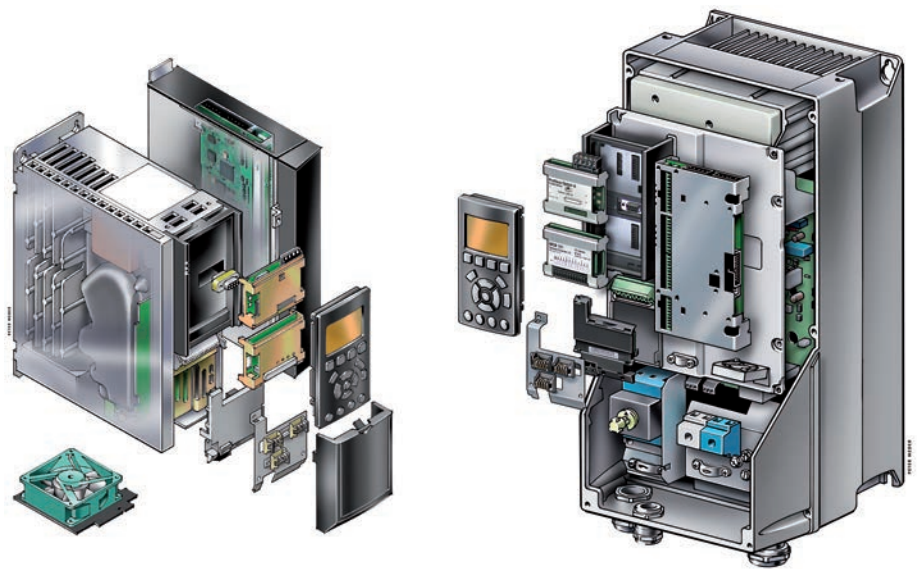
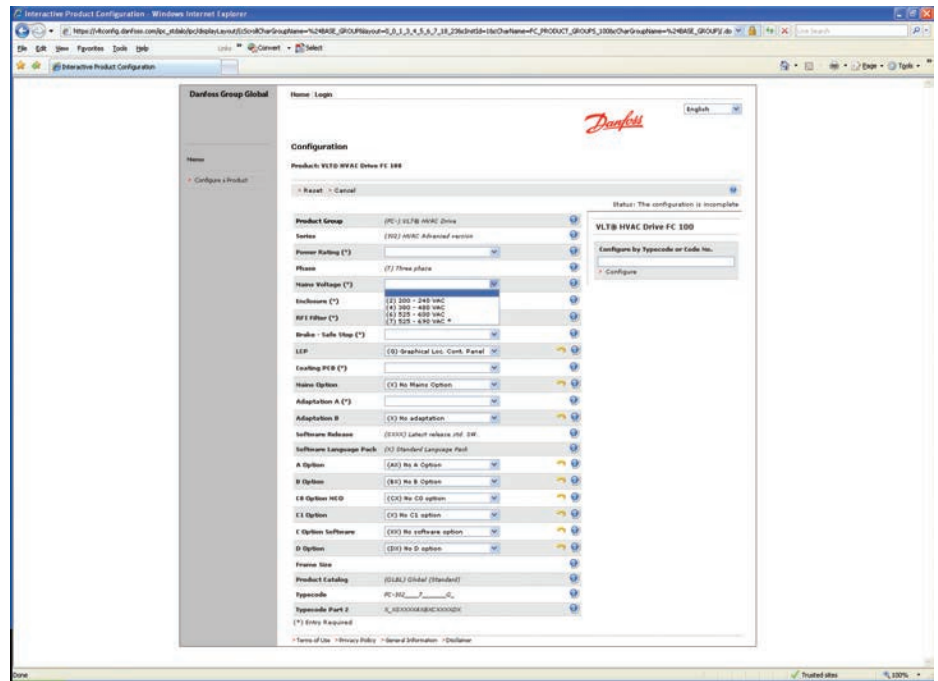
The Drive Configurator generates the unique article number for the drive you need, preventing errors during order entry.

“Decoding” is also available: Enter a Typecode and the Drive Configurator will decode the configuration and show configuration for your drive.

“Reverse engineering” is also supported: Enter an article number and the Drive Configurator will display the exact configuration for the drive in question, including all options and special features. A further advantage of using the Drive Configurator is that it tells you exactly which options and features are available and so prevents you selecting conflicting or nonsensical combinations.

If you need to replace an obsolete product, just enter the article number of the older VLT® and the Drive Configurator will provide details of the appropriate newer generation replacement.

Last but by no means least, the Drive Configurator provides quick access to the available spare parts and accessories for both current and obsolete products.



What VLT® is all About

Danfoss VLT Drives is the world leader among dedicated drives providers – and still gaining market share.

Environmentally responsible

VLT® products are manufactured with respect for the safety and well-being of people and the environment.

All activities are planned and performed taking into account the individual employee, the work environment and the external environment. Production takes place with a minimum of noise, smoke or other pollution and environmentally safe disposal of the products is pre-prepared.

UN Global Compact

Danfoss has signed the UN Global Compact on social and environmental responsibility and our companies act responsibly towards local societies.

EU Directives

All factories are certified according to ISO 14001 standard. All products fulfil the EU Directives for General Product Safety and the Machinery directive. Danfoss VLT® Drives is, in all product series, implementing the EU Directive concerning Hazardous Substances in Electrical and Electronic Equipment (RoHS) and is designing all new product series according to the EU Directive on Waste Electrical and Electronic Equipment (WEEE).

Impact on energy savings

One year's energy savings from our annual production of VLT® drives will save the energy equivalent to the energy production from a major power plant. Better process control at the same time improves product quality and reduces waste and wear on equipment.

Dedicated to drives

Dedication has been a key word since 1968, when Danfoss introduced the world's first mass produced variable speed drive for AC motors – and named it VLT®.

Twenty five hundred employees develop, manufacture, sell and service drives and soft starters in more than one hundred countries, focused only on drives and soft starters.

Intelligent and innovative

Developers at Danfoss VLT® Drives have fully adopted modular principles in development as well as design, production and configuration.

Tomorrow's features are developed in parallel using dedicated technology platforms. This allows the development of all elements to take place in parallel, at the same time reducing time to market and ensuring that customers always enjoy the benefits of the latest features.

Rely on the experts

We take responsibility for every element of our products. The fact that we develop and produce our own features, hardware, software, power modules, printed circuit boards, and accessories is your guarantee of reliable products.

Local backup – globally

VLT® motor controllers are operating in applications all over the world and Danfoss VLT® Drives' experts located in more than 100 countries are ready to support our customers with application advice and service wherever they may be.

Danfoss VLT® Drives experts don't stop until the customer's drive challenges are solved.



Danfoss Drives, 4401 N. Bell School Rd., Loves Park, IL 61111, Tel. +1 (815) 639-8600 (main),
Tel. +1 (800) 432-6367 (24 Hour Service for Drives), Fax +1 (815) 639-8000, www.danfossdrives.com, Email: salesinformation@danfoss.com

Danfoss can accept no responsibility for possible errors in catalogues, brochures and other printed material. Danfoss reserves the right to alter its products without notice. This also applies to products already on order provided that such alterations can be made without subsequential changes being necessary in specifications already agreed. All trademarks in this material are property of the respective companies. Danfoss and the Danfoss logotype are trademarks of Danfoss A/S. All rights reserved.