

TM-L100 Wi-Fi[®] Setup Guide

Describes how to set printers, smart devices, and computers to connect via wireless LAN (Wi-Fi).

TM-L100 Bluetooth[®] Setup Guide

Describes the settings for printers, smart devices, and computers to connect via Bluetooth.

Contents

TM-L100 Wi-Fi® Setup Guide	3
■ About this Manual	5
Aim of the Manual	5
Screens and Illustrations in this Manual	5
Wireless LAN Interface (With OT-WL06)	5
SimpleAP	5
■ Setup	6
Preparing the Printer.....	6
Preparing the Software.....	6
■ How to Set the Wireless LAN Interface.....	7
■ Setup Using a Computer Connected with a USB Cable	8
■ Setup Using a Computer Connected Using SimpleAP	11
■ Setup Using iOS Device Connected with a Lightning Cable.....	15
■ Setup Using an Android Device Connected with a USB Cable	20
■ Setup Using a Smart Device Connected Using SimpleAP	24
■ Starting SimpleAP.....	30
■ Wi-Fi Setup Procedure Using TM-L100 Utility.....	31
TM-L100 Bluetooth® Setup Guide	33
■ About this Manual	35
Aim of the Manual	35
Screens and Illustrations in this Manual	35
Bluetooth Interface.....	35
■ Setup	36
Preparing the Printer.....	36
■ Connecting the Printer and Your Device by Bluetooth.....	37
■ Using a Computer’s Bluetooth Pairing Function	38
■ Using an Android Device’s Bluetooth Pairing Function	42
■ Using an iOS Device’s Bluetooth Pairing Function	45
■ Using Bluetooth Pairing Function in iPad OS	48

TM-L100

Wi-Fi® Setup Guide

Cautions

- No part of this document may be reproduced, stored in a retrieval system, or transmitted in any form or by any means, electronic, mechanical, photocopying, recording, or otherwise, without the prior written permission of Seiko Epson Corporation.
- The contents of this document are subject to change without notice. Please contact us for the latest information.
- While every precaution has been taken in the preparation of this document, Seiko Epson Corporation assumes no responsibility for errors or omissions.
- Neither is any liability assumed for damages resulting from the use of the information contained herein.
- Neither Seiko Epson Corporation nor its affiliates shall be liable to the purchaser of this product or third parties for damages, losses, costs, or expenses incurred by the purchaser or third parties as a result of: accident, misuse, or abuse of this product or unauthorized modifications, repairs, or alterations to this product, or (excluding the U.S.) failure to strictly comply with Seiko Epson Corporation's operating and maintenance instructions.
- Seiko Epson Corporation shall not be liable against any damages or problems arising from the use of any options or any consumable products other than those designated as Original Epson Products or Epson Approved Products by Seiko Epson Corporation.

Trademarks

EPSON is a registered trademark of Seiko Epson Corporation.

Exceed Your Vision and ESC/POS are registered trademarks or trademarks of Seiko Epson Corporation.

Microsoft and Windows are registered trademarks of Microsoft Corporation in the United States and/or other countries.

Wi-Fi[®], WPA[™], and WPA2[™] are either registered trademarks or trademarks of Wi-Fi Alliance[®].

iOS is a trademark or registered trademark of Cisco in the United States and other countries, and any use thereof is under license.

Apple, Apple TV, Apple Watch, iPad, iPad Air, iPad Pro, iPhone, and Lightning are trademarks of Apple Inc., registered in the U.S. and other countries. tvOS is a trademark of Apple Inc.

Android[™] is a trademark of Google LLC.

Google Play and the Google Play logo are trademarks of Google LLC.

All other trademarks are the property of their respective owners and used for identification purpose only.

©Seiko Epson Corporation 2022.

About this Manual

Aim of the Manual

This manual describes how to set printers, smart devices, and computers to connect via wireless LAN (Wi-Fi).

Screens and Illustrations in this Manual

Although the screens shown in this manual might differ from the actual screens on the OS or product that you are using, the operation methods are the same. In addition, the illustrations shown in this manual are for the TM-L100, unless specified otherwise.

Wireless LAN Interface (With OT-WL06)

You can connect via SimpleAP or via LAN or USB cable and use the network configuration tool to configure the wireless LAN settings. For setting up wireless LAN settings for multiple printers, connect them with a LAN or USB cable and use Epson Deployment Tool. You can also easily connect the printer to the network from your iOS or Android device using the Epson TM Utility.

CAUTION

- When using wireless LAN, make sure you disconnect the LAN cable. If a LAN cable is connected, wireless LAN is disabled.
- When you set up the access point at the same time, set the access point in advance and check that it operates correctly.
- Examine the radio wave situation in the surrounding area before use.
- Avoid using the same channel that is used in the neighboring shops where Wireless LAN is used.
- Wireless LAN with a frequency band of 2.4 GHz may interfere with Bluetooth communication. When using Bluetooth and Wi-Fi at the same time, it is recommended to use 5 GHz.
- When using the printer in environments where kitchen microwaves and other devices that may interfere radio waves are installed, observe the following points.
 - * Keep the printer away from the devices that may cause radio wave interference.
 - * Use channels that are away from the frequency bands that may cause radio wave interference.
 - * Place shields between the printer and the devices that may cause radio wave interference.
 - * Select either 2.4 GHz or 5 GHz, whichever is free from radio wave interference.
 - * In auto channel setting for the access point, do not select a channel in which the devices may cause radio wave interference.

SimpleAP

SimpleAP mode is a function that allows you to use printer setting tools (TM-L100 Utility, Epson TM Utility) to easily setup a printer's wireless LAN, without going through a network environment such as an access point.

Setup

Preparing the Printer

Connect an AC adapter to the printer, and load the roll paper. For details, see the TM-L100 Setup Guide.

Preparing the Software

Download the required software from the following websites/app stores.

Software Name	Download Site
Epson TM Utility	A utility that is available on the App Store or Google Play.
TM-L100 Utility	https://www.epson-biz.com/

How to Set the Wireless LAN Interface

Set up the printer's wireless LAN from your device. Select the appropriate method for your environment from the following table.

How to Set the Wireless LAN for Each Device

Device Used	Method	Software Used
Computer (without wireless LAN function)	"Setup Using a Computer Connected with a USB Cable" on page 8	TM-L100 Utility
Computer (with wireless LAN function)	"Setup Using a Computer Connected Using SimpleAP" on page 11	
iPhone/iPad	"Setup Using iOS Device Connected with a Lightning Cable" on page 15	Epson TM Utility
Android	"Setup Using an Android Device Connected with a USB Cable" on page 20	
Smart device (iOS 12 or later/Android 8 or later)	"Setup Using a Smart Device Connected Using SimpleAP" on page 24	

Setup Using a Computer Connected with a USB Cable

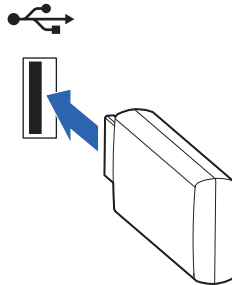
Use the included USB cable to connect the printer to your computer, and then use TM-L100 Utility to set the network connection.

Prepare the following items.

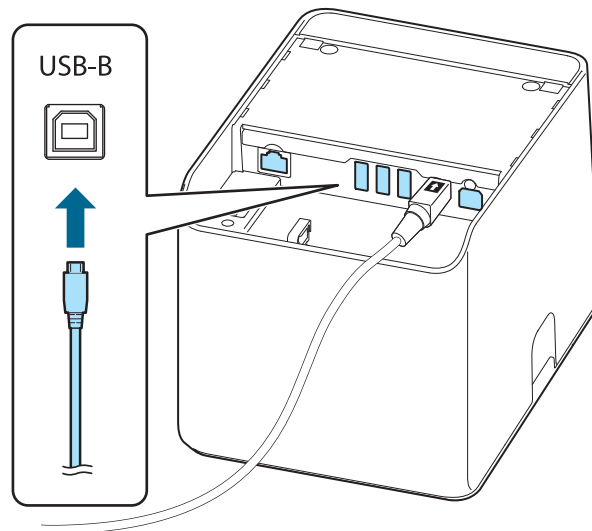
- Computer: Windows 11/10/8.1/8/7
- USB cable: With a Type B connector required for connecting to the printer
- Setup utility: TM-L100 Utility
- Wireless LAN unit: OT-WL06

Follow the procedure below to set the network connection.

1 Connect the wireless LAN unit (OT-WL06) to the printer.



2 Connect the printer to the computer with a USB cable. Connect the cable to the USB Type B connector on the printer.

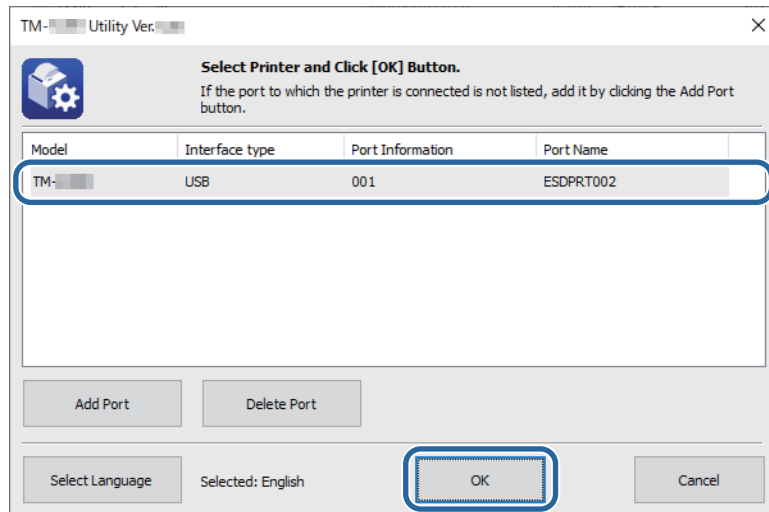


3 Turn on the computer.

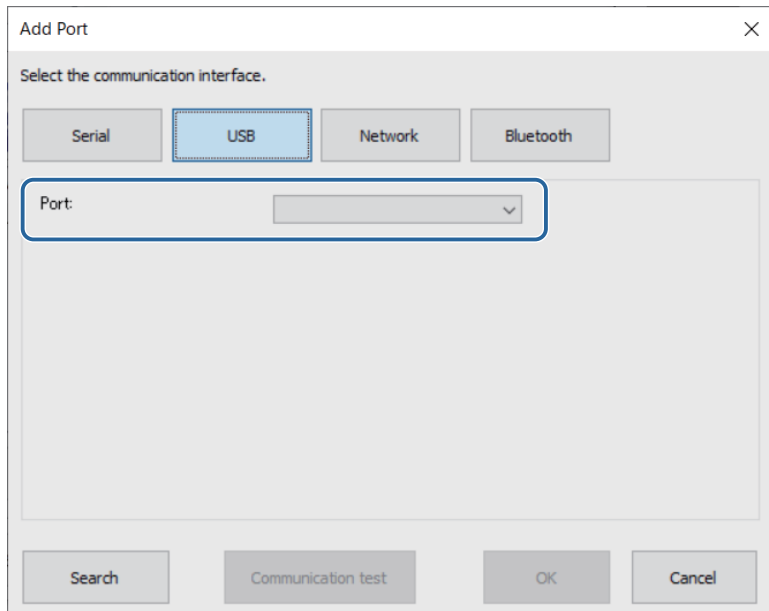
4 Turn on the printer.

5 Select [Start] - [EPSON TM-L100] - [TM-L100 Utility].

6 The following screen appears. Select the printer and click [OK].

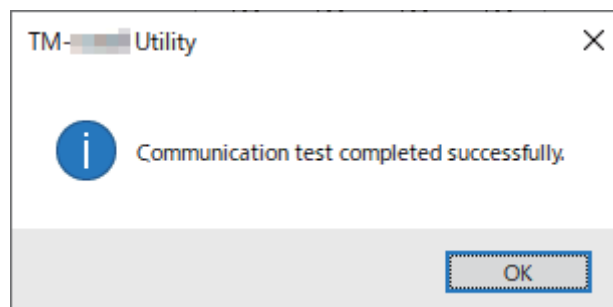


If the printer does not appear, click the [Add Port] - [USB] button to add the USB-connected printer. After setting, click [OK].



NOTE

- If the communication with the port failed, an error message appears. In such case, you cannot add the port. Check the printer's connection status and the driver's port settings.
- Clicking the [Communication test] displays the communication result on the screen. It does not conduct a test print.



Items to Set for USB Connection

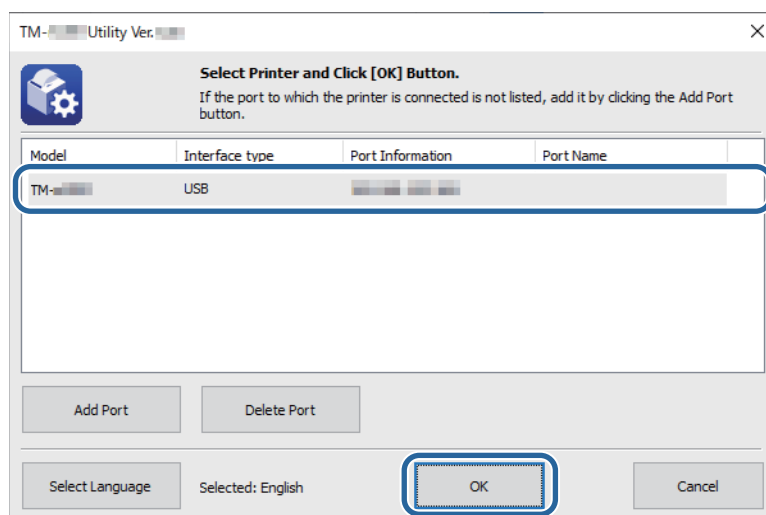
Item	Description
USB	Selects the USB port you use.
Search	Searches for the available USB port(s).
Communication test	Runs a communication test.

NOTE

If connected via USB, printers cannot be added under the environment where both Printer Class^{*1} printers and Vender Class^{*1} printers exist. In such a case, first turn off the existing printers, and then start the utility.

*1 For details, see the TM-L100 Technical Reference Guide.

7 The following screen appears again. Select the added port and click the [OK].



8 This utility is started.

9 Sets the Wi-Fi.

For details about how to set Wi-Fi, see ["Wi-Fi Setup Procedure Using TM-L100 Utility"](#) on page 31.

10 After completing the settings, turn off the printer.

This completes the network settings for the printer.

Setup Using a Computer Connected Using SimpleAP

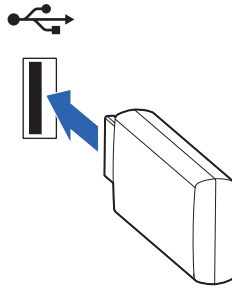
Use SimpleAP to connect the printer to your computer, and then use TM-L100 Utility to set the network connection.

Prepare the following items.

- Computer: Windows 11/10/8.1/8/7 (A computer with wireless LAN capability)
- Setup utility: TM-L100 Utility
- Wireless LAN unit: OT-WL06

Follow the procedure below to set the network connection.

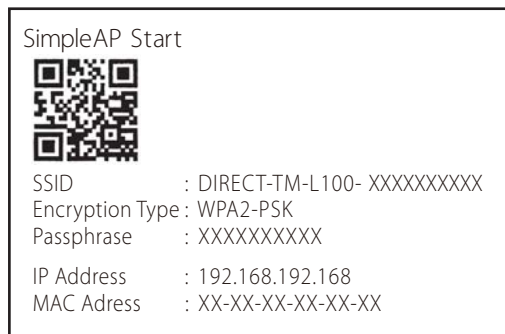
1 Connect the wireless LAN unit (OT-WL06) to the printer.



2 Turn on the computer.

3 Start the printer in the SimpleAP mode.

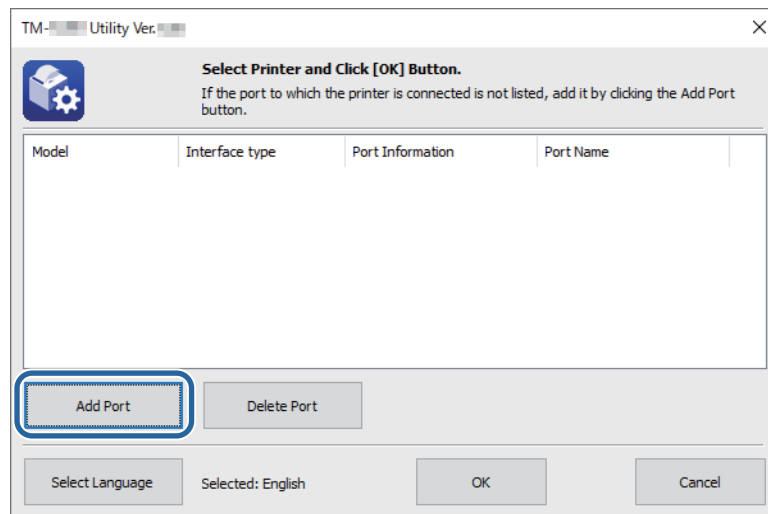
If the wireless LAN connection is set to the default values (factory default), it will automatically start in SimpleAP mode when the power is turned on and print the following.



If this is not printed as shown here, see ["Starting SimpleAP" on page 30](#) for more information.

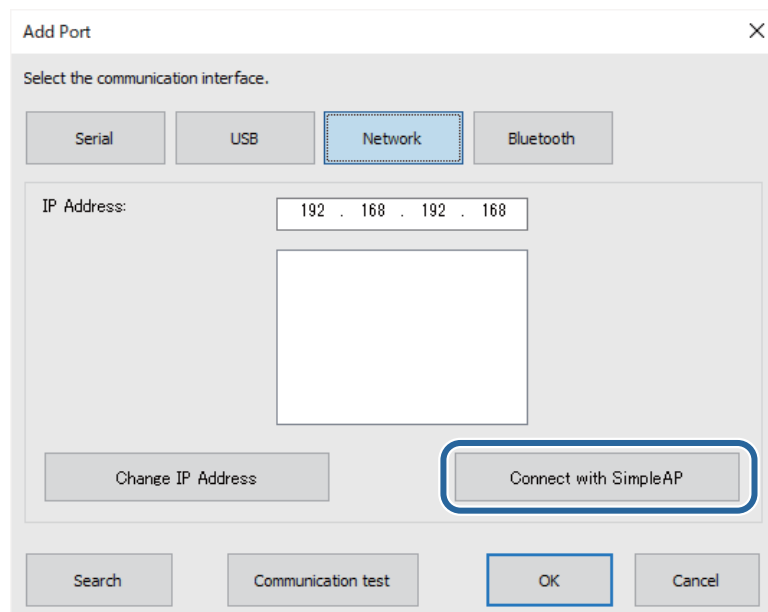
4 Select [Start] - [EPSON TM-L100] - [TM-L100 Utility].

5 The following screen appears. Click the [Add Port].



6 The "Add Port" screen appears. Select [Network].

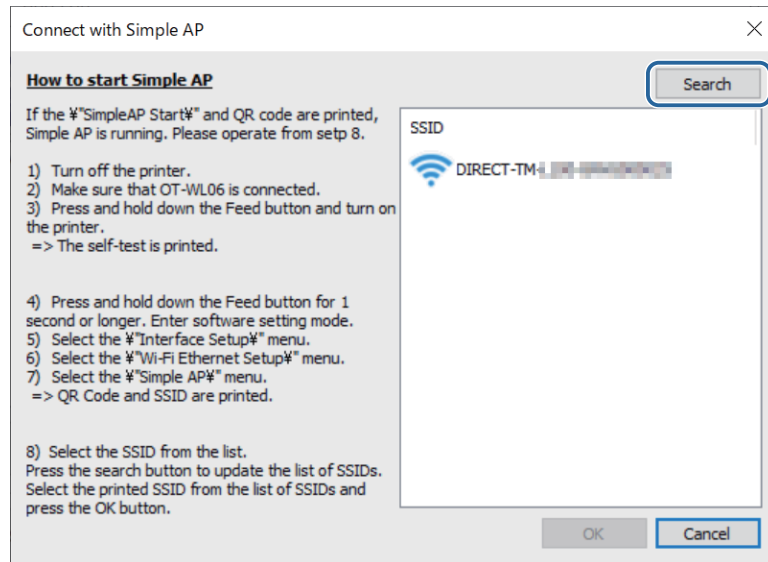
7 The following screen appears. Click the [Connect with SimpleAP].



8 The "Connect with SimpleAP" screen appears. Click the [Search].

The TM printers that can be connected are displayed.

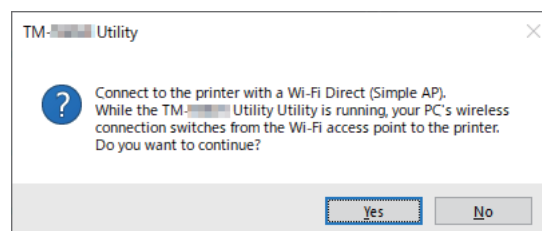
If the TM printer is not displayed, that printer cannot be set to Simple AP mode. Refer to "Starting SimpleAP" on page 30 to set the TM printer in Simple AP mode.



9 Select the SSID of the TM printer to connect, and click [OK].

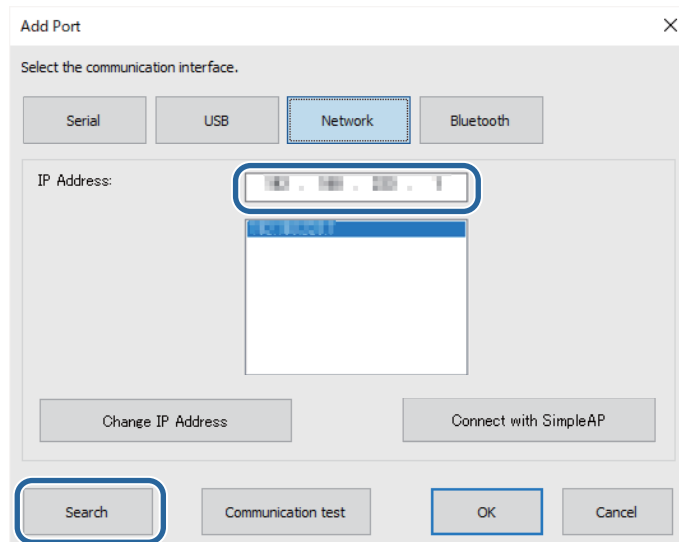
10 The following screen appears. Read the details, and then click [Yes].

The PC's Wi-Fi switches to Simple AP mode, the existing Wi-Fi settings are disabled, and communication is not possible. If you set the Wi-Fi on the printer or turn off the printer, SimpleAP mode is disabled and the existing Wi-Fi settings are enabled. (This varies according to the PC's settings.)

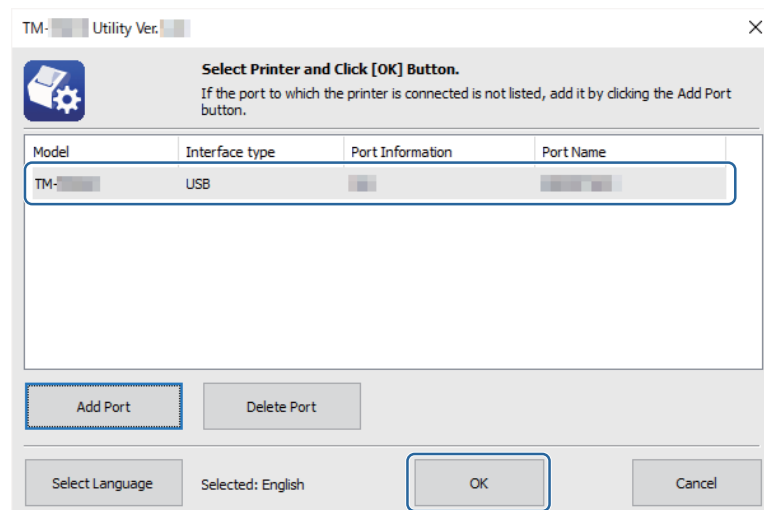


- 11** The "Add Port" screen appears again. Connection is made in Simple AP mode, and the IP address of the TM printer is displayed. The default IP address is as follows.
IP address: 192.168.192.168

If no IP address is displayed, click [Search] and then select the IP address of the target printer. After you specify the IP address, click [OK].



- 12** The following screen appears again. Select a network and click [OK] to connect to the TM printer in SimpleAP mode.



- 13** This utility is started.

- 14** Sets the Wi-Fi.

For details about how to set Wi-Fi, see ["Wi-Fi Setup Procedure Using TM-L100 Utility"](#) on page 31.

- 15** After completing the settings, turn off the printer.

This completes the network settings for the printer.

Setup Using iOS Device Connected with a Lightning Cable

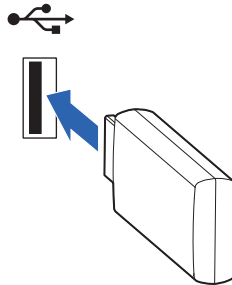
Use a Lightning cable to connect the printer to your iOS device, and then use Epson TM Utility to set the network connection.

Prepare the following items.

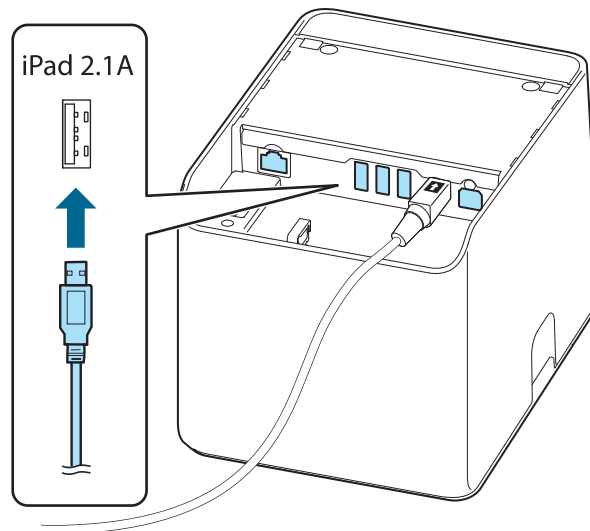
- iPhone or iPad: iOS12 or later
- Setup utility: Epson TM Utility
- USB cable: Lightning to USB cable
- Wireless LAN unit: OT-WL06

Follow the procedure below to set the network connection.

1 Connect the wireless LAN unit (OT-WL06) to the printer.



2 Connect the iPhone or iPad to the printer with the Lightning to USB cable. Connect the cable to the USB-A - Device Charging connector on the printer.



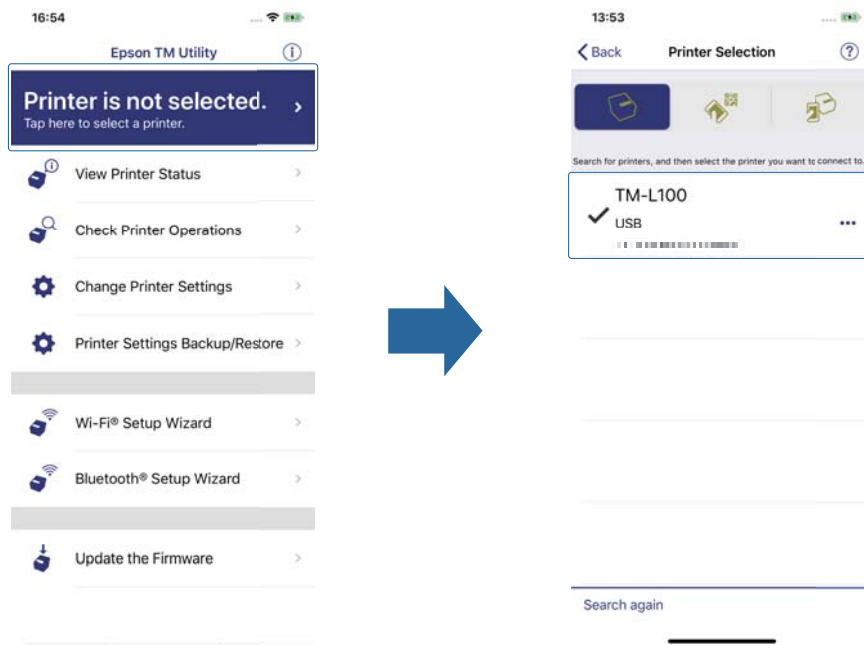
3 Turn on the iPhone or iPad.

4 Turn on the printer.

5 Start Epson TM Utility.

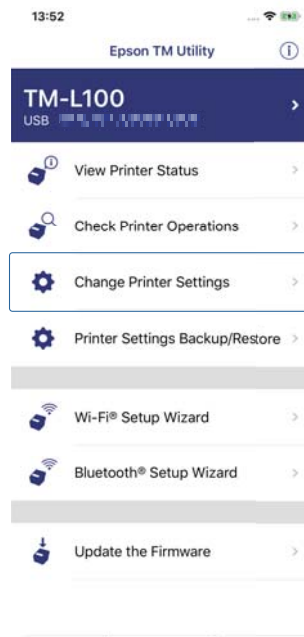


6 Tap [Printer is not selected.], and then select the printer with [USB] under its model name.

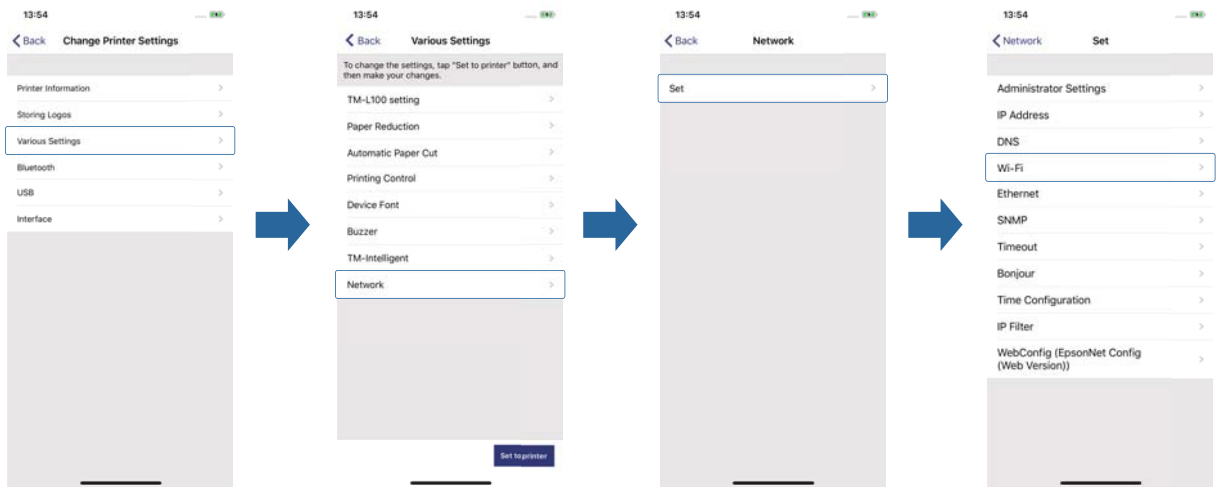


7 Tap [Back] to return to the previous screen.

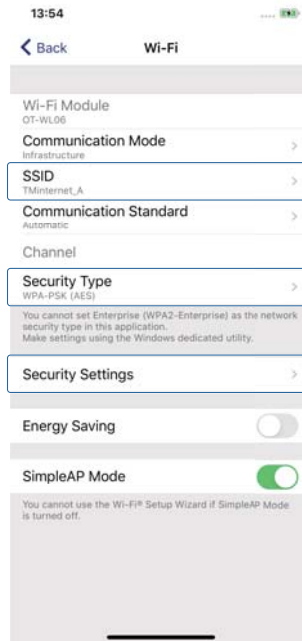
8 Tap [Change Printer Settings] to set the network.



9 Tap [Various Settings] - [Network] - [Set] - [Wi-Fi].

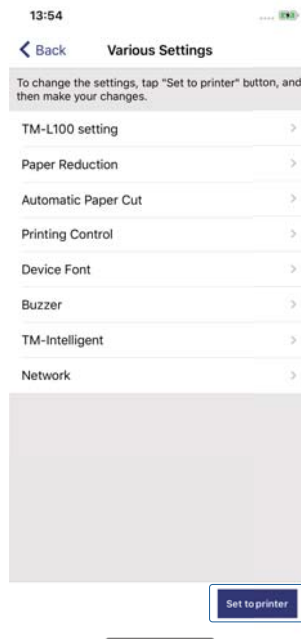


10 Enter the required Wi-Fi information on the following screen.



Item	Required Information
SSID	Enter an SSID.
Security Type	Select a security type. Enter a pass phrase according to the selected security type.
Security Settings	Enter a pass phrase.

- 11** After entering the Wi-Fi information, return to the “Various Settings” screen and tap “Set to printer”.



NOTE

Approximately one minute is required after making printer settings in order for the printer to restart. It is recommended to first set each item beforehand and then set the printer.

- 12** When the settings are complete, exit Epson TM Utility.
- 13** Turn off the printer.

This completes the wireless LAN setup for the printer.

Setup Using an Android Device Connected with a USB Cable

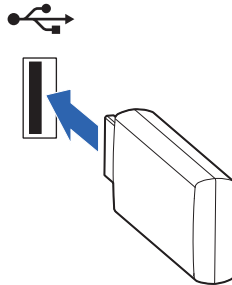
Use a USB Type-B micro to mini-A cable or a USB Type-B to Type-C cable to connect the printer to your Android device, and then use Epson TM Utility to set the network connection.

Prepare the following items.

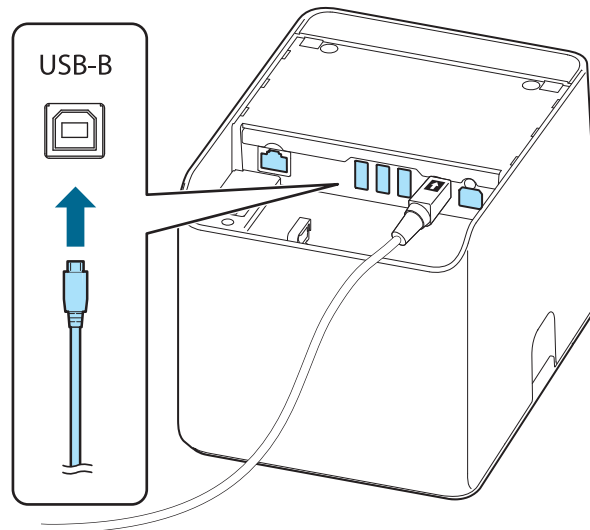
- Android device: Android 4 or later
- Setup utility: Epson TM Utility
- USB cable: USB Type-B-micro mini A cable or USB Type-B - Type-C cable
- Wireless LAN unit: OT-WL06

Follow the procedure below to set the network connection.

1 Connect the wireless LAN unit (OT-WL06) to the printer.



2 Connect the Android device to the printer with the USB cable. Connect the cable to the USB Type B connector on the printer.



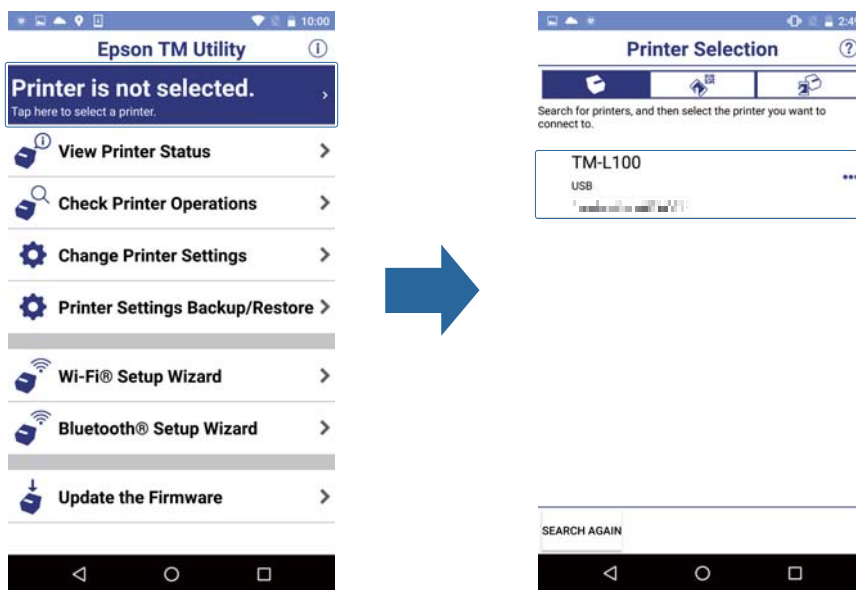
3 Turn on the Android device.

4 Turn on the printer.

5 Start Epson TM Utility.

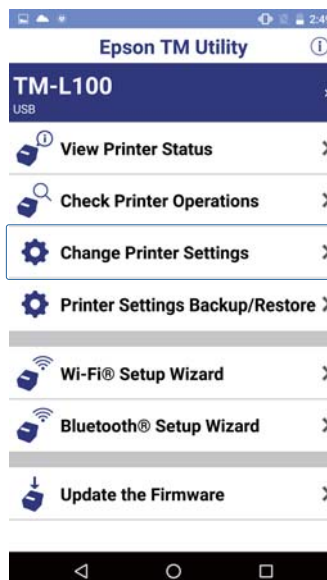


6 Tap [Printer is not selected.], and then select the printer with [USB] under its model name.

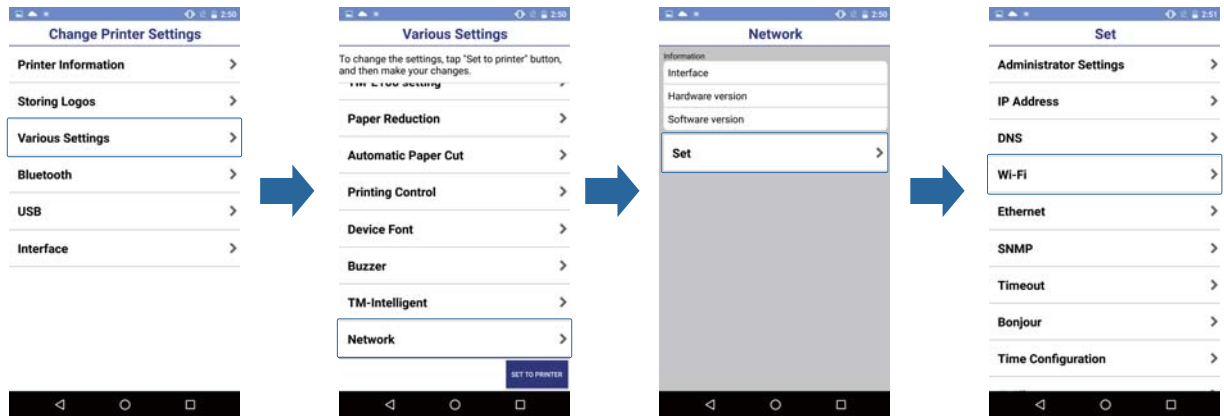


7 Tap the [Back] button on your Android device to return to the previous screen.

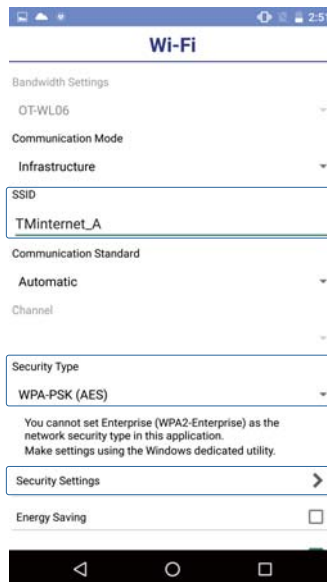
8 Tap [Change Printer Settings] to set the network.



9 Tap [Various Settings] - [Network] - [Set] - [Wi-Fi].



10 Enter the required Wi-Fi information on the following screen.



Item	Required Information
SSID	Enter an SSID.
Security Type	Select a security type. Enter a pass phrase according to the selected security type.
Security Settings	Enter a pass phrase.

- 11 After entering the Wi-Fi information, return to the “Various Settings” screen and tap [Set to printer].



NOTE

Approximately one minute is required after making printer settings in order for the printer to restart. It is recommended to first set each item beforehand and then set the printer.

- 12 When the settings are complete, exit Epson TM Utility.
- 13 Turn off the printer.

This completes the wireless LAN setup for the printer.

Setup Using a Smart Device Connected Using SimpleAP

Use SimpleAP to connect the printer to your smart device, and then use Epson TM Utility to set the network connection.

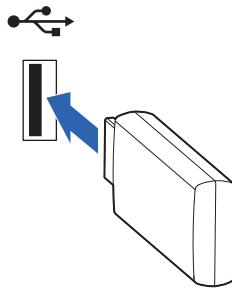
Prepare the following items.

- Smart device: iOS 12 or later/Android 8 or later
- Setup utility: Epson TM Utility
- Wireless LAN unit: OT-WL06

Follow the procedure below to set the network connection.

* In this manual, iOS is used to describe this procedure. The procedure is the same for both iOS and Android.

1 Connect the wireless LAN unit (OT-WL06) to the printer.



2 Turn on the smart device.

3 Start the printer in the SimpleAP mode.

If the wireless LAN connection is set to the default values (factory default), it will automatically start in SimpleAP mode when the power is turned on and print the following.

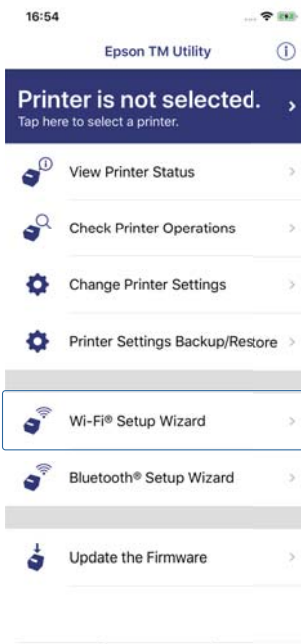


If this is not printed as shown here, see ["Starting SimpleAP" on page 30](#) for more information.

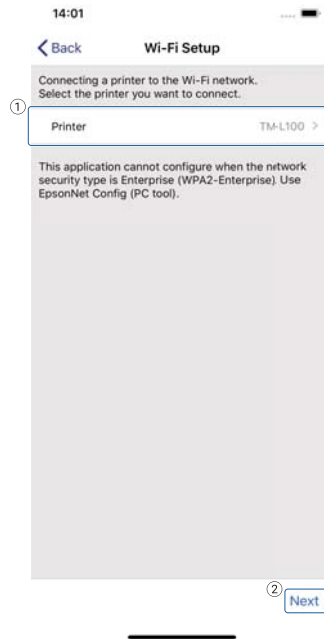
4 Start Epson TM Utility.



5 Tap [Wi-Fi® Setup Wizard].



6 On the “Wi-Fi Setup” screen, select your printer and then tap [Next].



7 Follow the instructions on the screen for scanning the QR code, and then connect to the printer in SimpleAP mode.



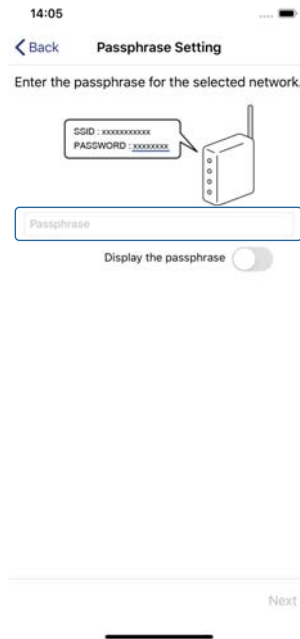
8 Enter the SSID for the network to which you will connect your printer.



9 Select the security for the network to which you will connect your printer.



10 Enter the pass phrase for the network to which you will connect your printer.



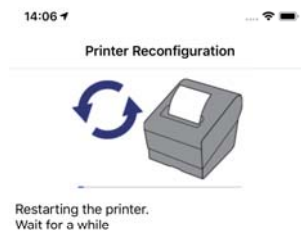
11 Specify the IP address that you want to set for your printer.



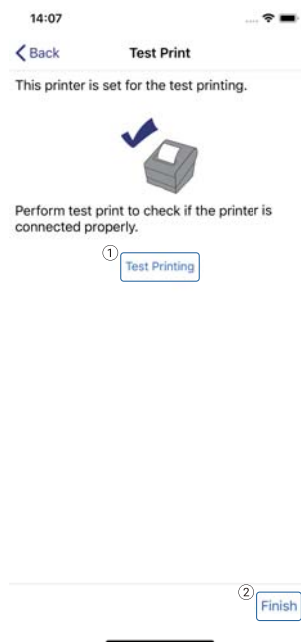
NOTE

If you tap [Auto (DHCP)] to enable it, an IP address will be assigned automatically and you will be unable to enter one manually.

12 The settings are set to the printer.



13 Tap [Test Printing] to make sure that your printer is connected correctly. After performing a test printing, tap [Finish].



14 When the settings are complete, exit Epson TM Utility.






15 Turn off the printer.

This completes the wireless LAN setup for the printer.

Starting SimpleAP


After connecting the wireless LAN unit (OT-WL06) and turning on the printer, if SimpleAP mode does not start automatically and the QR code below is not printed, perform the following procedure.



- 1 Turn off the printer.**
- 2 Press and hold the  (Feed) button while turning on the printer.**
A self-test is performed. Remove the printout from the printer.
- 3 Press and hold the  (Feed) button for at least one second to enter software setting mode.**
- 4 Press the  (Feed) button briefly (less than one second) five times, and then press and hold it for at least one second to enter interface setup mode.**
Instructions are printed out.
- 5 Press the  (Feed) button briefly (less than one second) one time, then press and hold it for at least one second, and then select the [Wi-Fi & Ethernet Setup] menu.**
- 6 Press the  (Feed) button briefly (less than one second) two times, then press and hold it for at least one second, and then select the [SimpleAP] menu.**
The printer enters SimpleAP mode, and prints a QR code and SSID.

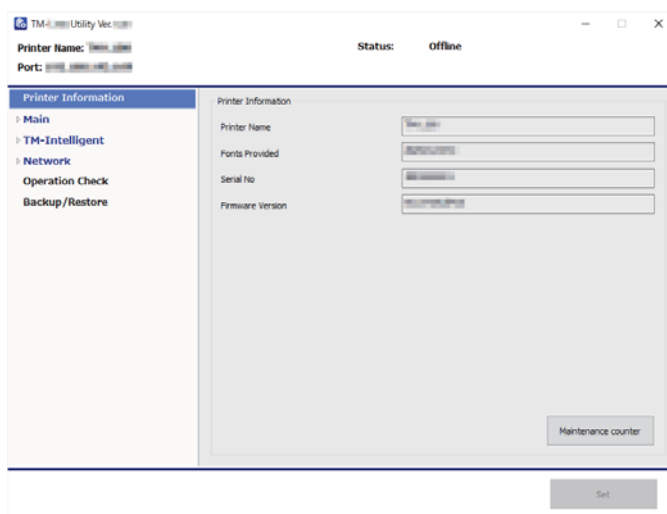
This completes the procedure.

It might take several tens of seconds before the QR code and SSID are printed out.

 IMPORTANT	Do not turn off the printer until the QR code and SSID are printed out.
--	---

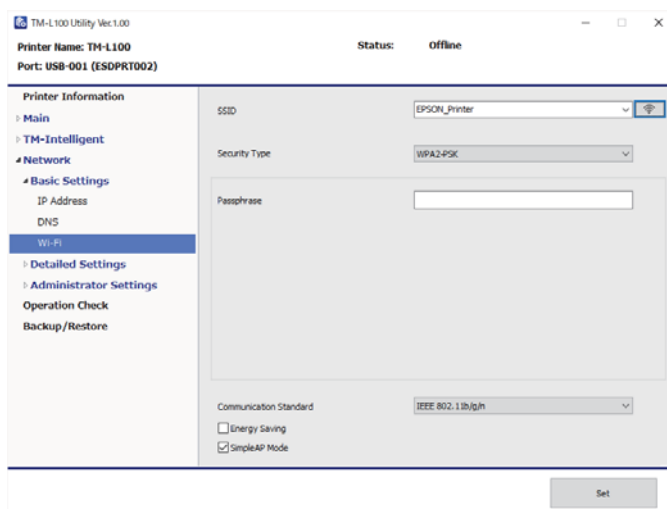
Wi-Fi Setup Procedure Using TM-L100 Utility

1 Start TM-L100 Utility.




2 Click the [Network] - [Basic Settings] - [Wi-Fi].

3 Sets the Wi-Fi.

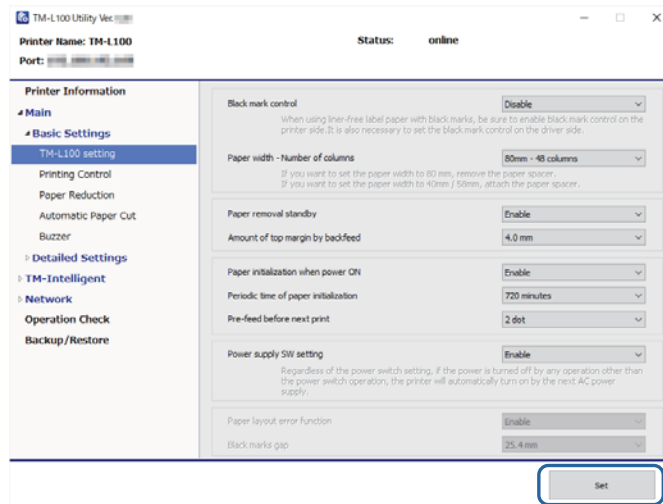


Setting items are following.

Item		Description
SSID		Specify the SSID. Click the  button to acquire a valid SSID.
Security Type		Select the security type. Enter the security key for the selected security type.
None		No security key is set.
WPA-PSK (AES)	Passphrase	Enter a pass phrase.
WPA2-PSK	Passphrase	Enter a pass phrase.

Item		Description
WPA2-Enterprise	Authentication Method	Sets the authentication method.
	Detailed Settings	Sets the client authentication settings and server authentication settings. For details, see the TM-L100 Utility User's Manual.
	Encryption Strength	Sets the encryption strength.
Communication Standard		Selects the communication standard for wireless LAN.
Energy Saving		Specifies whether to enable or disable the energy saving.
SimpleAP Mode		Specifies whether to validate or invalidate SimpleAP mode.

4 When configuring other settings, select the menu without clicking [Set].
When setting a printer, set each this utility setting item and click [Set].



NOTE Approximately one minute is required after making printer settings in order for the printer to restart. It is recommended to first set each item beforehand and then set the printer.

This completes the Wi-Fi setup for the printer.

TM-L100

Bluetooth® Setup Guide

Cautions

- No part of this document may be reproduced, stored in a retrieval system, or transmitted in any form or by any means, electronic, mechanical, photocopying, recording, or otherwise, without the prior written permission of Seiko Epson Corporation.
- The contents of this document are subject to change without notice. Please contact us for the latest information.
- While every precaution has been taken in the preparation of this document, Seiko Epson Corporation assumes no responsibility for errors or omissions.
- Neither is any liability assumed for damages resulting from the use of the information contained herein.
- Neither Seiko Epson Corporation nor its affiliates shall be liable to the purchaser of this product or third parties for damages, losses, costs, or expenses incurred by the purchaser or third parties as a result of: accident, misuse, or abuse of this product or unauthorized modifications, repairs, or alterations to this product, or (excluding the U.S.) failure to strictly comply with Seiko Epson Corporation's operating and maintenance instructions.
- Seiko Epson Corporation shall not be liable against any damages or problems arising from the use of any options or any consumable products other than those designated as Original Epson Products or Epson Approved Products by Seiko Epson Corporation.

Trademarks

EPSON is a registered trademark of Seiko Epson Corporation.

Exceed Your Vision and ESC/POS are registered trademarks or trademarks of Seiko Epson Corporation.

Microsoft and Windows are registered trademarks of Microsoft Corporation in the United States and/or other countries.

The Bluetooth[®] word mark and logos are registered trademarks owned by Bluetooth SIG, Inc. and any use of such marks by Seiko Epson Corporation is under license.

iOS is a trademark or registered trademark of Cisco in the United States and other countries, and any use thereof is under license.

Apple, Apple TV, Apple Watch, iPad, iPad Air, iPad Pro, iPhone, and Lightning are trademarks of Apple Inc., registered in the U.S. and other countries. tvOS is a trademark of Apple Inc. The trademark "iPhone" is used in Japan with a license from Aiphone K.K.

Android™ is a trademark of Google LLC.

Google Play and the Google Play logo are trademarks of Google LLC.

All other trademarks are the property of their respective owners and used for identification purpose only.

©Seiko Epson Corporation 2022.

About this Manual

Aim of the Manual

This manual describes the settings for printers, smart devices, and computers to connect via Bluetooth.

Screens and Illustrations in this Manual

Although the screens shown in this manual might differ from the actual screens on the OS or product that you are using, the operation methods are the same. In addition, the illustrations shown in this manual are for the TM-L100, unless specified otherwise.

Bluetooth Interface

Pair the printer with your device using the Bluetooth function of the device or using other methods.

Pairing the printer is also possible by using EPSON™ Bluetooth Connector (Windows) or Epson™ Utility.

CAUTION

- If the host computer and the printer are not connected via wireless on a continuous basis but rather connected every time the printer starts printing, some time may be needed for the printer to actually start printing after the host computer commands printing. This pause is the time required for processing the connection between the host computer and the printer, and it depends on the conditions of the environment where used.
- If data transfer from an application of the host computer has already been completed, data might remain in the Bluetooth module internal buffer. As such data remaining in the buffer might be lost when the connection is cut off, use the status or similar functions to check that transmitted data has been completely printed before cutting off the wireless connection.
- After the status sheet is printed, only the print settings of the mainly connected interface are retained. For the mainly connected interface, see the TM-L100 Technical Reference Guide.
- Ethernet and Wi-Fi status sheets are not printed while the printing communication protocol is being established. They will be printed after the connection is cut off (including being cut due to a time out).
- The Bluetooth status sheet is not printed if status sheet printing is performed under the following conditions.
 - * Bluetooth is connected when the Bluetooth security is set to "Medium" or "High"
 - * An error occurs when the Bluetooth security is set to "Medium" or "High"
 - * Time between when a pairing request is received and Passkey printing starts when the Bluetooth security is set to "High"
- "(none)" is printed for the "Connected Peripheral" if no peripherals are connected to the USB downstream port connector.

NOTE

- For detailed information about EPSON™ Bluetooth® Connector, see the TM Bluetooth® Connector User's Manual.
- The initial setting for Bluetooth security level is "Middle". For details, see the TM-L100 Technical Reference Guide.
- This printer will automatically reconnect with the iOS device if the Bluetooth is lost (automatic reconnection function). For details, see the TM-L100 Technical Reference Guide.

Setup

Preparing the Printer

Connect an AC adapter to the printer, and load the roll paper. For details, see the TM-L100 Setup Guide.

Connecting the Printer and Your Device by Bluetooth

Connect the printer to your device by Bluetooth. Select the appropriate method for your environment from the following table.


Settings by Device Connected to the Printer

Device Connected	Method
Computer (Windows)	"Using a Computer's Bluetooth Pairing Function" on page 38
Android device	"Using an Android Device's Bluetooth Pairing Function" on page 42
iOS device	"Using an iOS Device's Bluetooth Pairing Function" on page 45
iPad	"Using Bluetooth Pairing Function in iPad OS" on page 48

Using a Computer's Bluetooth Pairing Function

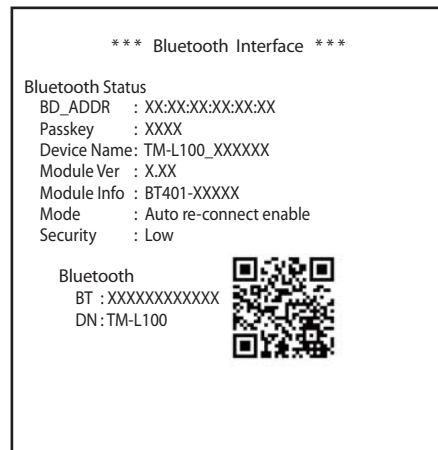
Use your computer's Bluetooth pairing function to pair the printer with your computer.

Follow the procedure below to set the network connection.

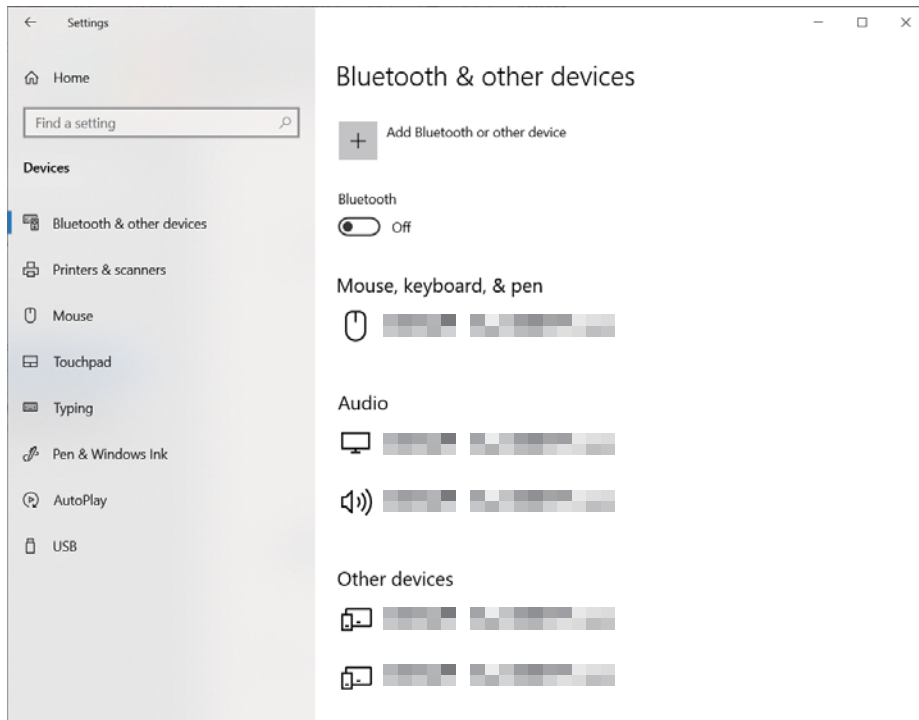
- 1 Turn on the computer.**
- 2 Turn on the printer.**
- 3 Open the roll paper cover.**
- 4 Press and hold the  (Feed) button. (At least one second)**
- 5 Close the roll paper cover.**
Printing of the status sheet begins. After printing is complete, the printer returns to normal mode.

CAUTION

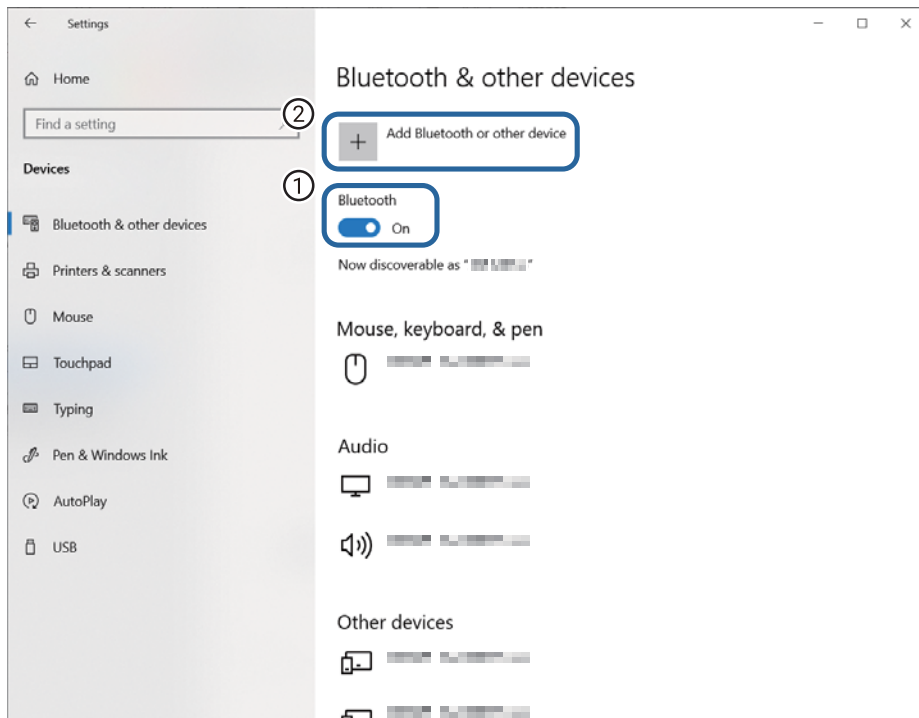
The initial setting for Bluetooth security level is "Middle".
Pair your computer with the printer within about one minute after the status sheet is printed.



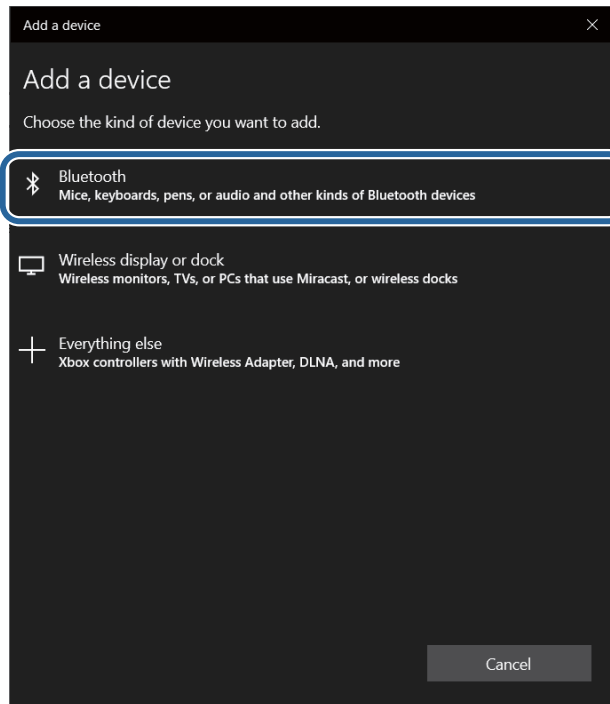
- 6** On your computer, select [Start] - [Settings] - [Devices] to open the “Bluetooth & other devices” screen.



- 7** Click the [Bluetooth] button to enable Bluetooth, and then click [Add Bluetooth or other device].



8 On the “Add a device” screen, click [Bluetooth].

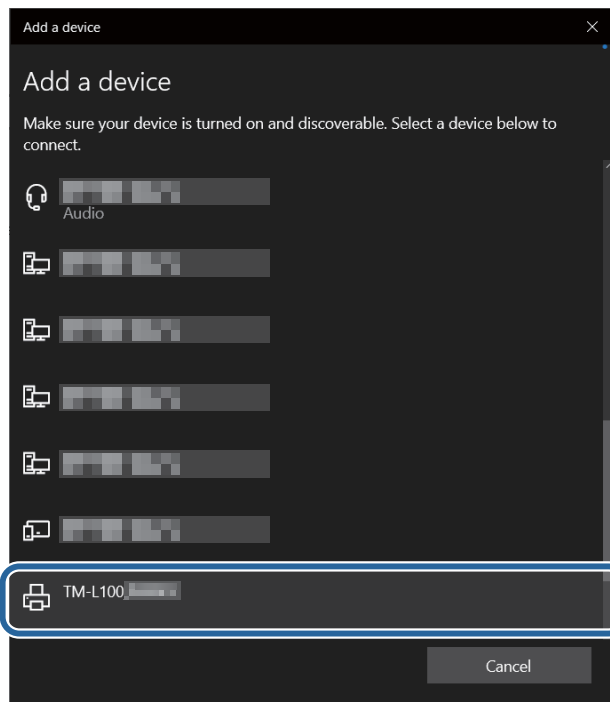


9 Select the printer.

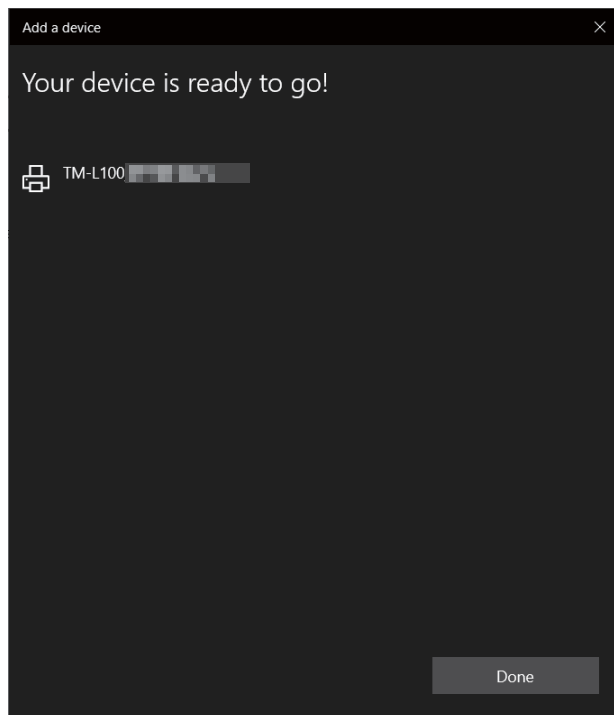
It might take some time for the printer to connect to your computer.

CAUTION

If one minute has passed since the status sheet is printed and the printer you want to connect to is not displayed, print the status sheet again.



10 When the connection is made, the following screen appears. Click the [Done].




11 This completes pairing.

Using an Android Device's Bluetooth Pairing Function

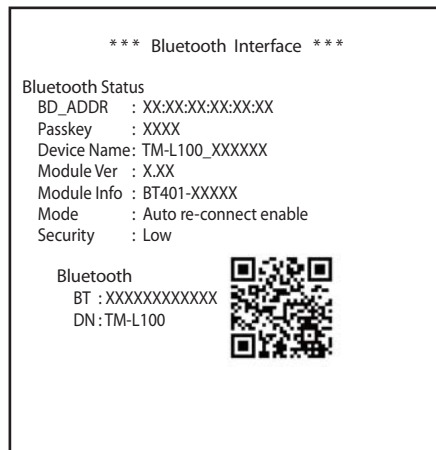
Use your Android device's Bluetooth pairing function to pair the printer with your device.

Follow the procedure below to set the network connection.

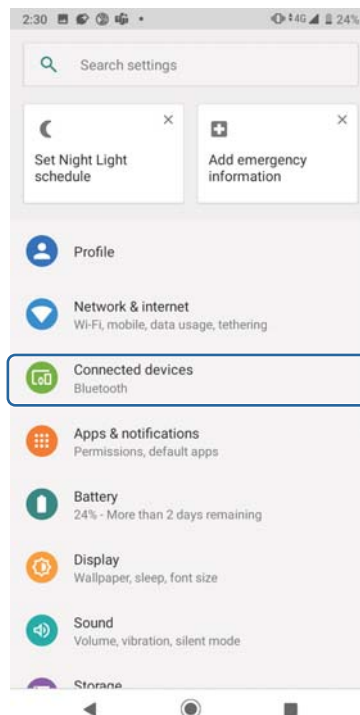
- 1 Turn on the Android device.**
- 2 Turn on the printer.**
- 3 Open the roll paper cover.**
- 4 Press and hold the  (Feed) button. (At least one second)**
- 5 Close the roll paper cover.**
Printing of the status sheet begins. After printing is complete, the printer returns to normal mode.

CAUTION

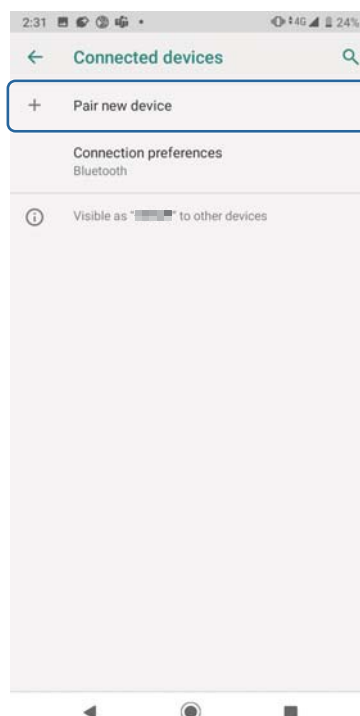
The initial setting for Bluetooth security level is "Middle".
Pair your Android device with the printer within about one minute after the status sheet is printed.



6 On your Android device, tap [Settings] - [Connected devices].



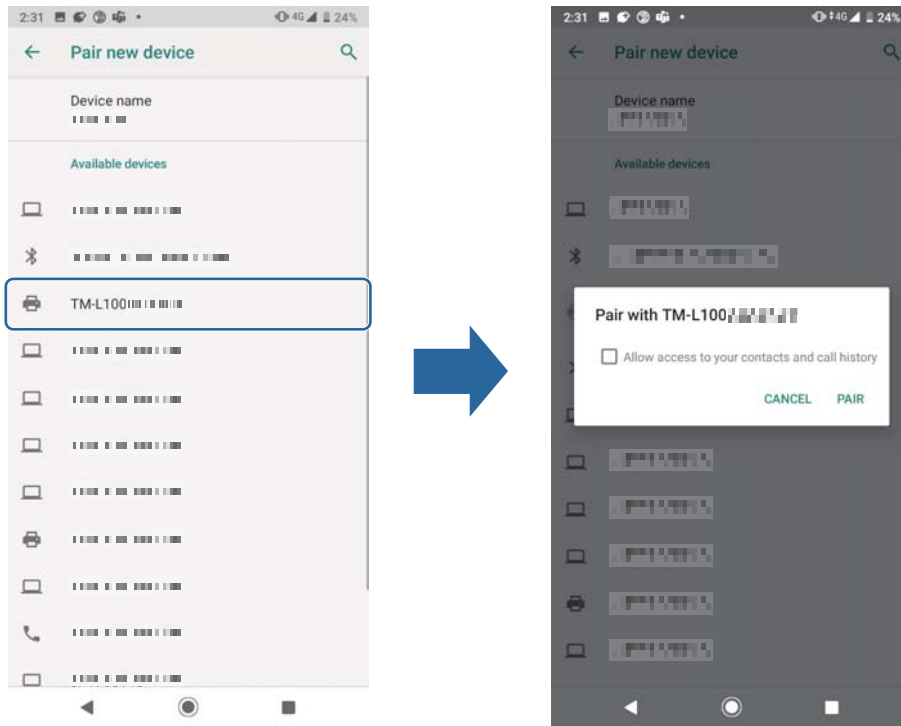
7 Tap [Pair new device].



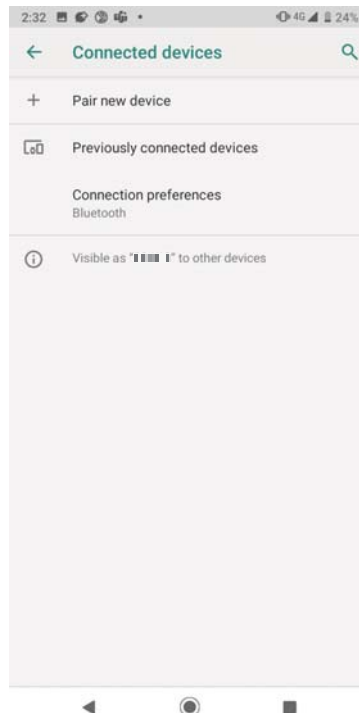
- 8** Select your printer, and then on the confirmation screen tap [PAIR].
It might take some time for the printer to connect to your Android device.

CAUTION

If one minute has passed since the status sheet is printed and the printer you want to connect to is not displayed, print the status sheet again.



- 9** When the connection is made, the following screen appears.




- 10** This completes pairing.

Using an iOS Device's Bluetooth Pairing Function

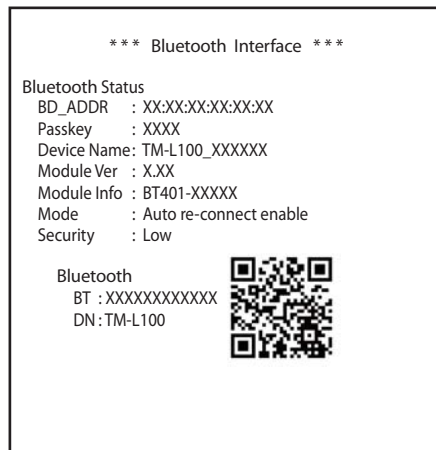
Use your iOS device's Bluetooth pairing function to pair the printer with your device.

Follow the procedure below to set the network connection.

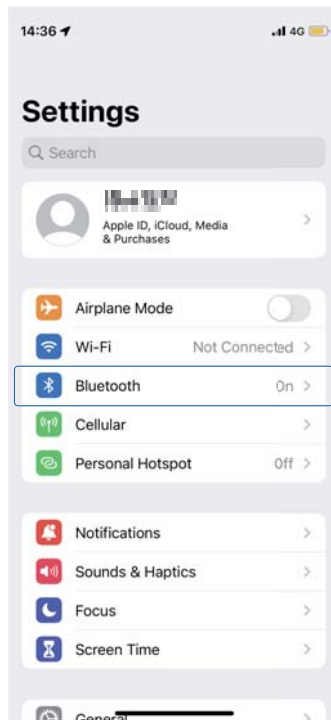
- 1 Turn on the iOS device.**
- 2 Turn on the printer.**
- 3 Open the roll paper cover.**
- 4 Press and hold the  (Feed) button. (At least one second)**
- 5 Close the roll paper cover.**
Printing of the status sheet begins. After printing is complete, the printer returns to normal mode.

CAUTION

The initial setting for Bluetooth security level is "Middle".
Pair your iOS device with the printer within about one minute after the status sheet is printed.

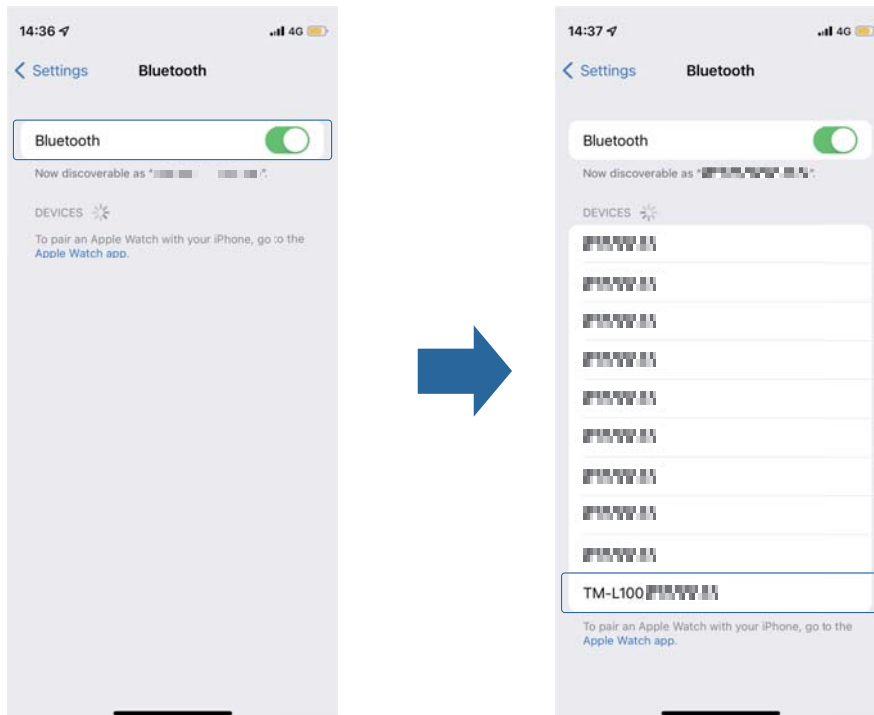


6 On your iOS device, tap [Settings] - [Bluetooth].

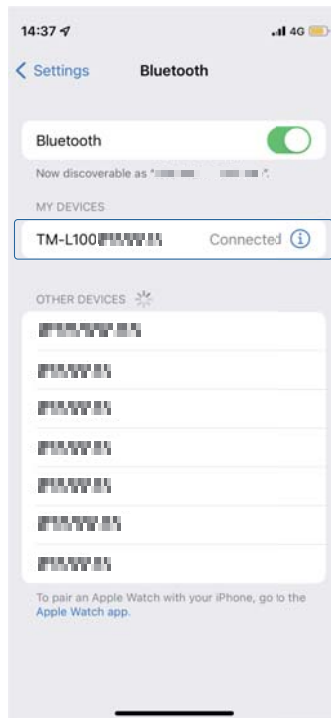


7 Tap the [Bluetooth] button to enable Bluetooth, and then select the printer. It might take some time for the printer to connect to your iOS device.

CAUTION If one minute has passed since the status sheet is printed and the printer you want to connect to is not displayed, print the status sheet again.



8 When the connection is made, the following screen appears.




9 This completes pairing.

Using Bluetooth Pairing Function in iPad OS

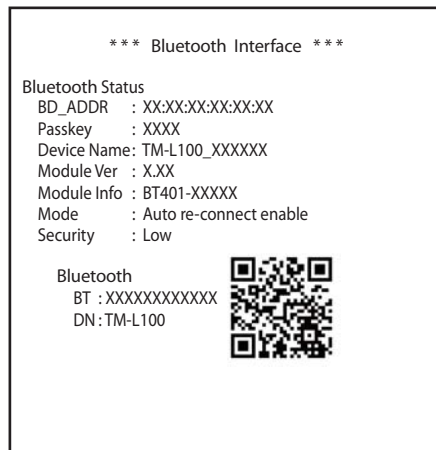
Use the Bluetooth pairing function in iPad OS to pair the printer with your device.

Follow the procedure below to set the network connection.

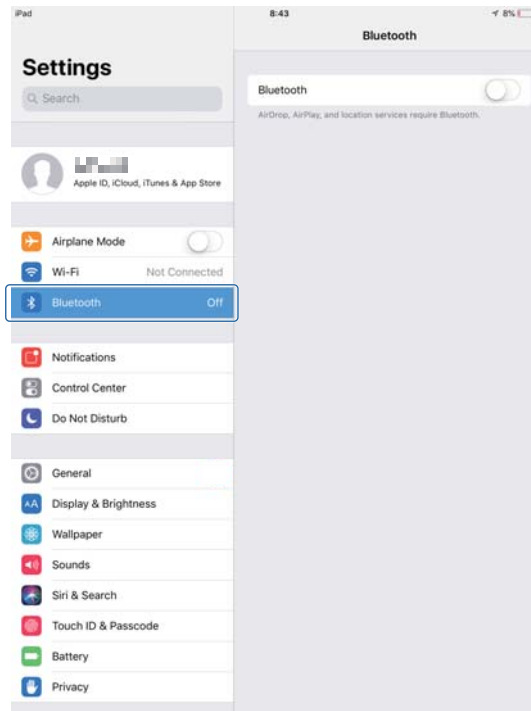
- 1 Turn on the iPad.**
- 2 Turn on the printer.**
- 3 Open the roll paper cover.**
- 4 Press and hold the  (Feed) button. (At least one second)**
- 5 Close the roll paper cover.**
Printing of the status sheet begins. After printing is complete, the printer returns to normal mode.

CAUTION

The initial setting for Bluetooth security level is "Middle".
Pair your iPad with the printer within about one minute after the status sheet is printed.



6 On your iPad, tap [Settings] - [Bluetooth].

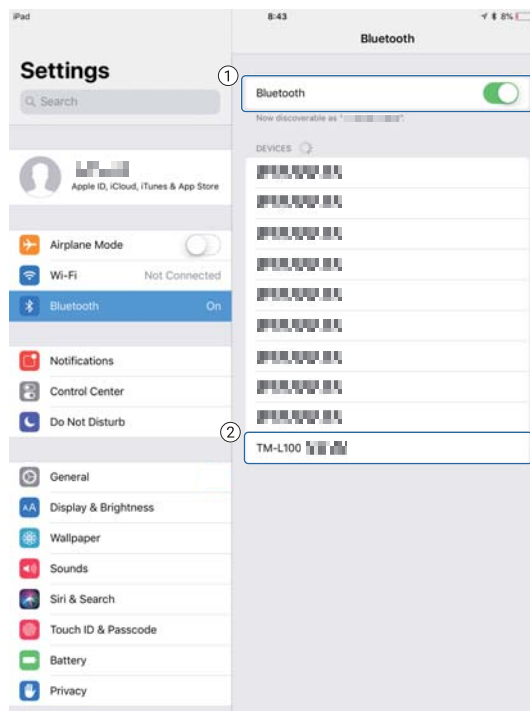


7 Tap the [Bluetooth] button to enable Bluetooth, and then select the printer.

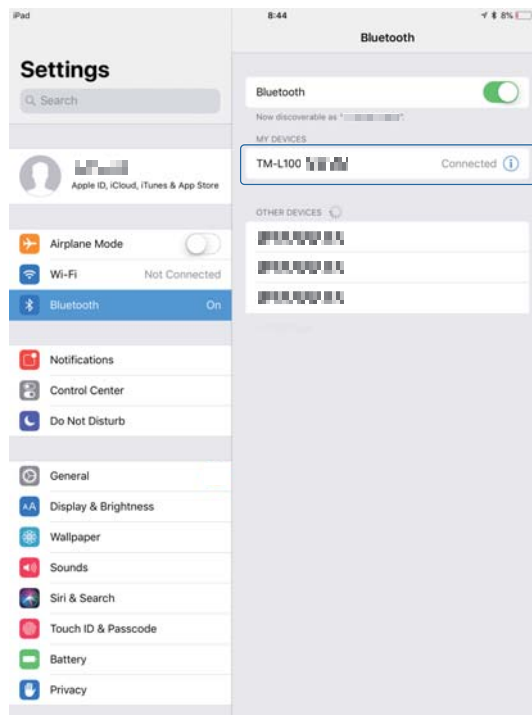
It might take some time for the printer to connect to your iPad.

CAUTION

If one minute has passed since the status sheet is printed and the printer you want to connect to is not displayed, print the status sheet again.



8 When the connection is made, the following screen appears.



9 This completes pairing.