

油順精密01新系列的液壓疊加閥，組裝緊湊，安裝容易，靈活易變，成本低，性能佳，耐用可靠。

本疊加閥系列包含有方向控制、壓力控制及流量調節控制等。

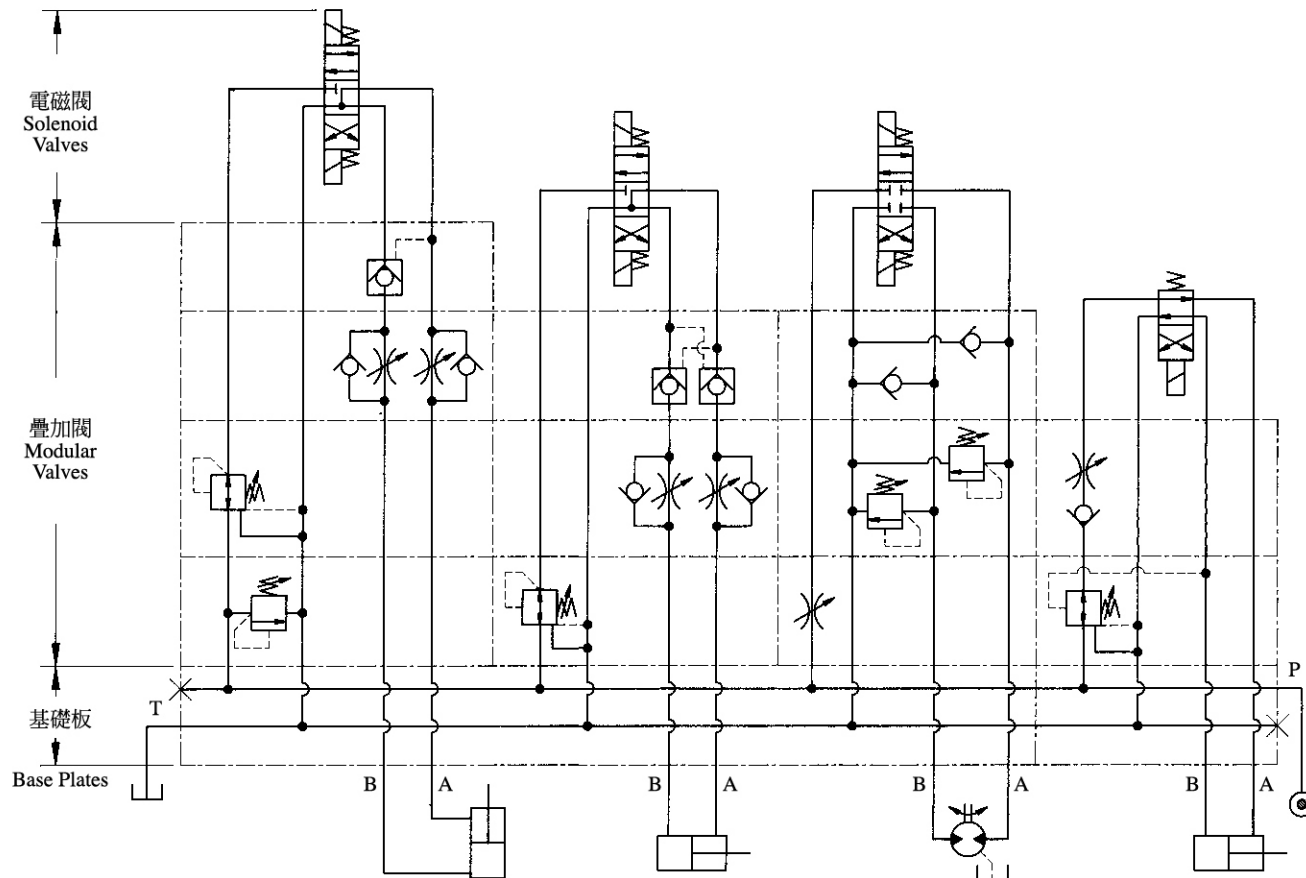
ASHUN 01 new series of modular valves offer economical assemblies, combining great flexibility and high performance in a compact valve package.

The modular valve series include directional control, pressure control and flow regulating control.

### ■ 特點 FEATURES

- 高壓力
- 大流量
- 系統設計靈活
- 組裝緊湊
- 洩漏、振動、噪音均小
- 保養容易
- High pressure : 31.5 MPa
- High flow : 40L/min
- System design flexibility
- Simply compact installation
- Scant risk of leakage, noise and vibration
- Easy maintenance

### ■ 疊加閥組裝實例 STACKING EXAMPLE

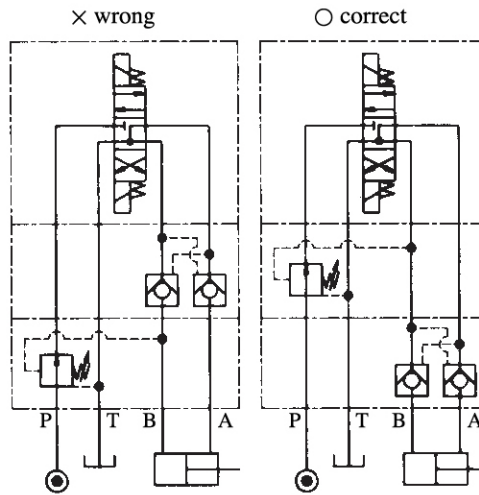


## ■ 安全注意範例 CARE IN APPLICATION

### ■ 鎖定迴路及減壓迴路

左迴路圖的安裝不能使油壓缸保持固定位置

When MRB-01-※ and MPW-01 are used together in the same circuit, the right circuit is correct, and the left is wrong, as MPW-01 would not be totally closed.



電磁閥  
solenoid valve  
(DSG-01)

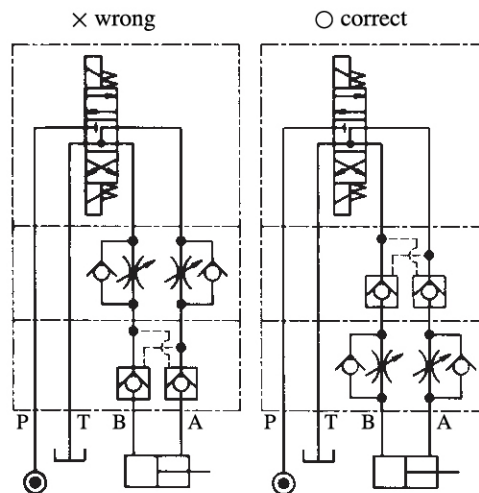
疊加式減壓閥  
pressure reducing modular valve  
(MRB-01-※)

疊加式先導單向閥  
pilot operated check modular valve  
(MPW-01-※)

### ■ 鎖定迴路及速度控制

左迴路圖的安裝會使油壓缸產生震盪現象

When MSW-01-X and MPW-01-※ are used together in the same circuit, MSW-01-X should be installed closer to the cylinder ports, otherwise the cylinder may have a "vibrating" phenomenon happened.



電磁閥  
solenoid valve  
(DSG-01)

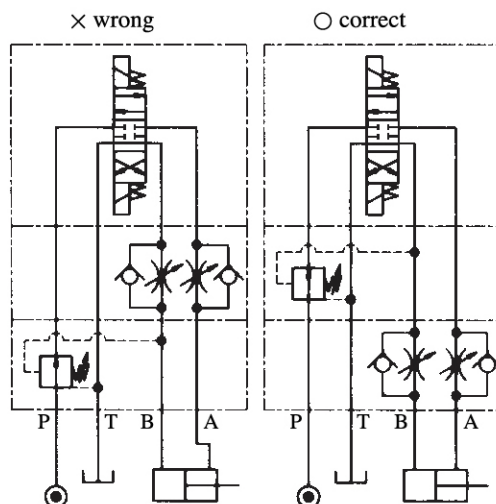
疊加式先導單向閥  
pilot operated check modular valve  
(MPW-01-※)

疊加式單向節流閥  
throttle and check modular valve  
(MSW-01-X)

### ■ 速度控制及減壓迴路

左迴路圖的安裝會使油壓缸拉力不足及速度降低

When MRB-01 and MSW-01-X are used together in the same circuit, the right circuit is correct, and the left is wrong, as the function of MRB-01 will be affected when oil flow from B port to T port. Because MSW-01 will create a pressure which will cause MRB-01-※ to reduce the pressure too low, and the cylinder then can not operate with enough force or move smoothly.

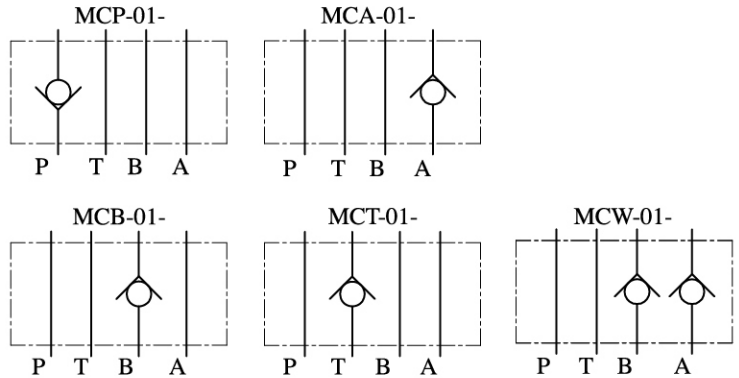


電磁閥  
solenoid valve  
(DSG-01)

疊加式先導單向閥  
pilot operated check modular valve  
(MPW-01-※)

疊加式單向節流閥  
throttle and check modular valve  
(MSW-01-X)

## 新產品 - 疊加式單向閥 Check Modular Valves



### 選購指南 HOW TO ORDER

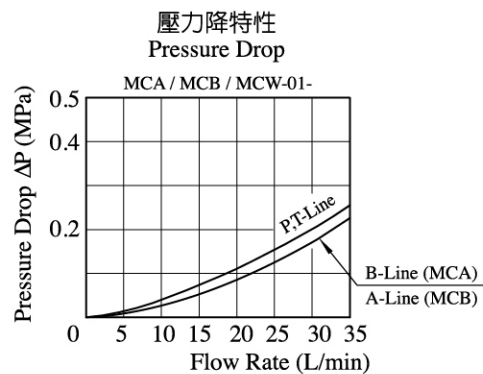
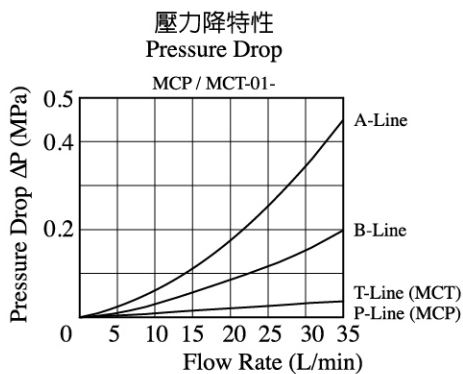
MCP	01	2	30
系列編號 SERIES NUMBER	口徑 VALVE SIZE	啓流壓力 CRACKING PRESSURE MPa (kgf/cm <sup>2</sup> )	設計號 DESIGN NUMBER
<b>Check Modular Valves</b> <b>MCP</b> : For P - Line <b>MCA</b> : For A - Line <b>MCB</b> : For B - Line <b>MCT</b> : For T - Line <b>MCW</b> : For AB - Line	- 01 : 1/4"	- 05 : 0.05 (0.5) - 50 : 0.5 (5)	- 30

### 規格說明 SPECIFICATIONS

型式 Model Series	最高使用壓力 Max. Operated Pressure MPa (kgf/cm <sup>2</sup> )	最大流量 Max. Flow (L/min)	重量 Weight (kg)
MCP-01-※-30	31.5 (315)	40	1.1
MCA-01-※-30			
MCB-01-※-30			
MCT-01-※-30			
MCW-01-※-30			

### 性能曲線 PERFORMANCE CURVES

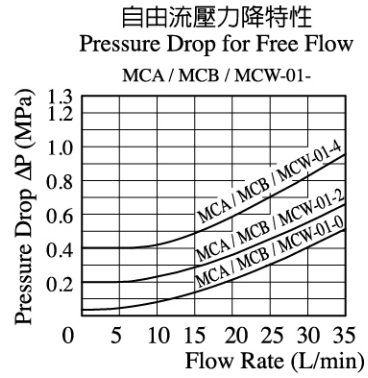
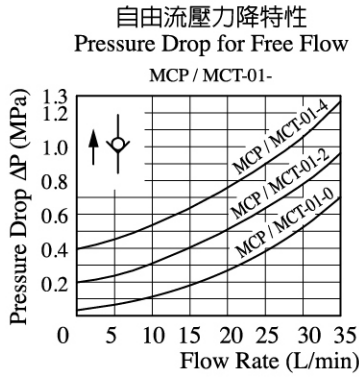
Hydraulic Fluid : Viscosity 35 cSt ( 35 mm<sup>2</sup>/s ) , Specific Gravity 0.850



# 疊加式單向閥 Check Modular Valves

## 性能曲線 PERFORMANCE CURVES

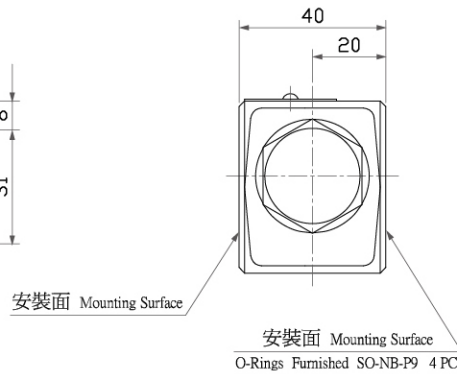
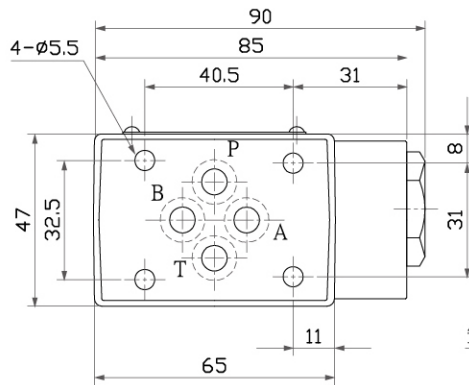
Hydraulic Fluid : Viscosity 35 cSt ( 35 mm<sup>2</sup>/s ) , Specific Gravity 0.850



## ● MCP-01-※- MCT-01-※-

安裝尺寸符合ISO4401-AB-03-4-A  
Mounting Surface:ISO4401-AB-03-4-A

DIMENSIONS IN MILLIMETRES



## ● MCA-01-※- MCB-01-※- MCW-01-※-

