

MrSID



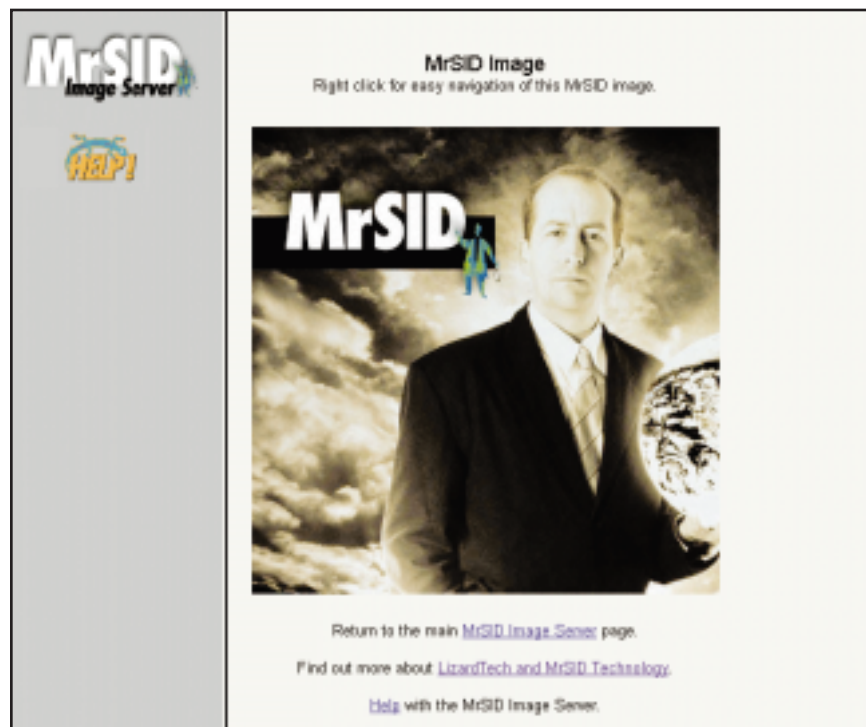
WHAT IS
MRSID?

WHAT IS THE
MRSID ONLINE
VIEWER?

MrSID Online Viewer

Introducing MrSID

MrSID image compression and decompression software offers users high-quality image-compression capabilities, along with the ability to view images quickly and easily on multiple platforms, and over the Internet. MrSID compression software takes images of virtually any size and compresses them into easily-manageable image files. The MrSID viewing products allow users to view, navigate, export, and print MrSID files. With the MrSID Image Server, highly-detailed imagery, with file sizes from megabytes to gigabytes, can be viewed quickly over the Internet.



Introducing The MrSID Online Viewer

The freely downloadable MrSID Online Viewer enables visitors to a MrSID Image Server to view imagery in MrSID format within their web browser. This capability allows for high-speed viewing of highly detailed imagery and a wide range of image manipulation controls.



SUPPORTED PLATFORMS

HOW TO USE THE MRSID ONLINE VIEWER

Supported Platforms

The MrSID Online Viewer is available for Windows 95 and NT systems running Netscape or Internet Explorer, and other browsers supporting the Netscape API. The Viewer has only been tested on versions 4.0 of Netscape and Explorer; earlier versions may be compatible.

Installing the Online Viewer

Before installing the MrSID Online Viewer, quit out of the browser into which you wish to install MrSID image viewing capability.

The MrSID Online Viewer will download to the location specified in your browser – usually to your desktop, or to the “downloads” folder in your browser’s directory. If you can’t find the file, try doing a “find” for the file, which is called NPMrSID.zip.

The MrSID Online Viewer downloads as a 154 kilobyte .zip file. Double-click on the file to decompress it.

The single NPMrSID.dll file that comprises the Online Viewer must be placed in the Netscape Communicator Plug-ins folder and/or the Internet Explorer Plug-ins folder. The Netscape plug-ins folder is usually found at the following location: C:/Program Files/Netscape/Communicator/Program/Plugins. The Internet Explorer plug-ins folder is usually found in C:/Program Files/Microsoft Internet/Plugins.

After the file has been placed in the appropriate plug-ins folder, relaunch your web browser. Navigate to a website displaying MrSID imagery (for example, <http://www.lizardtech.com/mis>), and start viewing MrSID imagery.





HOW TO USE THE MRSID ONLINE VIEWER

Using the MrSID Online Viewer

The main page of the MrSID Image Server displays a list of images available for viewing. Below each image are two links: ".gif" and ".sid." With the MrSID Online Viewer, which enables Internet Explorer and Netscape browsers to display images in .sid format, visitors to a website are allowed a wide range of image viewing options.

When you've chosen an image you'd like to view in detail, select the ".sid" option. A new screen will appear displaying the thumbnail image you've selected. Clicking once on this image will bring the image into "display" mode. Once in display mode, right-click on the image. A screen appears, giving the following options

<u>Z</u> oom <u>I</u> n	
<u>Z</u> oom <u>O</u> ut	
<u>P</u> an	
<hr/>	
1:1	
2:1	
4:1	
8:1	
16:1	
32:1	
<hr/>	
<u>P</u> ercent	
<u>Z</u> oom	
<hr/>	
256 x 256	
300 x 300	
400 x 400	
640 x 480	
<hr/>	
About LizardTech...	
<hr/>	
Save This Image <u>A</u> s...	

The top three options ("Zoom In," "Zoom Out" and "Pan") allow you to choose the image-viewing action of the left mouse button.

If you've selected "Zoom In," left-clicking with your mouse will zoom in on the image by one level. In other words, if you are at a 2:1 zoom ratio, a left-click in "Zoom In" mode will bring you to a 4:1 zoom ratio.

Likewise, in "Zoom Out" mode, left-clicking on the image will zoom out on the image by one level.

"Pan" mode allows you to click-and-drag the image across the screen. Left-click the image, holding down the mouse button; now, drag the image across the screen to the location you'd like to view. Releasing the mouse button brings the image into view at the new location.

The available zoom ratios are listed next. In this example, the image has been compressed with 6 "zoom levels." Each zoom level can be accessed by selecting it in the window above; left-click on the ratio you'd like to view, and the image will zoom in or out to that ratio.

The zoom levels can also be viewed as percentages by selecting the "Percent" option. By default, the MrSID Image Server displays images in a window 256 pixels high by 256 pixels wide. If your monitor supports larger image dimensions, you may choose a window of up to 640 pixels wide by 480 pixels high.



MrSID



**SAVING A
MRSID "SCENE"
TO YOUR HARD
DRIVE**

Saving a MrSID "Scene"

You can save the image to your hard drive as a .sid "scene" by selecting "Save This Image As...." The image will not be saved as a full, multi-resolution MrSID image; only the zoom level currently being viewed and the two previous zoom levels will be saved.

The MrSID Online Viewer is designed to view MrSID imagery embedded in a web document; dragging-and-dropping a .sid image or scene into a browser with the Online Viewer installed will produce an error message. To view locally stored MrSID scenes and images, download the MrSID Viewer from the LizardTech website at <http://www.lizardtech.com>.

**CONTACTING
LIZARDTECH**

Contacting LizardTech

1520 Bellevue Ave. 2nd Floor • Seattle, WA 98122
Phone: 206-320-9969 • Fax: 206-320-0989
<http://www.lizardtech.com>
techsupport@lizardtech.com

©1998, LizardTech, Inc.

No part of this document may be reproduced or transmitted by any means without permission from the copyright holder.

OV052298

