



raditeq

Data Sheet



# RadiField® RI Test Bundle

Compact

Efficient

Full Compliant





# RadiField® RI Test Bundle

## 800 MHz to 6 GHz Radiated Immunity Test System

Turnkey

Efficient

Full Compliant

Raditeq offers the RadiField® RI Test Bundle for radiated immunity testing up to 6 GHz. This bundle offers a great opportunity for EMC test facilities to have a complete turnkey system which has all the advantages of the Raditeq product synergy.

### The RadiField® bundle includes:

- **RadiCentre® Pro - CTR1009B#020** - 7 slots multifunctional EMC test system
- **RadiField® - RFS2006B** - RadiField 0.8 - 6 GHz @ 10 V/m field generator
- **RadiTower® - RTW3000A** - Mast with automatic H/V positioner
- **RadiGen® - RGN2006B** - 4 kHz to 6 GHz signal generator
- **RadiSense® - RSS2010S** - 20 MHz to 10 GHz Field probe
- **RadiSwitch® - RSW1022S** - Coaxial switch card (2x SPDT SMA)
- **RadiMation® Pro Software** - Full package EMC test software
- **Complete set of test accessories** - 10m RF coax cable, Radifield transport case and ISO17025 calibration for RadiSense® 10 probe, 10m fibre optic extension cable



Specifications are subject to change without notice

### RadiCentre® CTR1009B#020

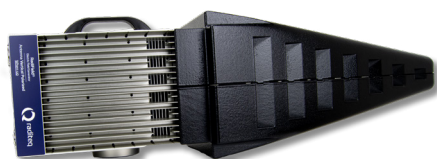
#### Performance



Number of slots for Plug-in Cards	7
Display (TFT touch screen)	7" TFT / WVGA (800x480)
Backplane	Intelligent versatile backplane
Dimensions	19" wide - 3U, 132mm (h) x 312mm (d)
Weight	7 kg
Operating System	Linux
Interfaces	USB, LAN, GPIB-488

### RadiField® RFS2006B

#### Performance



Frequency range	0.8 GHz - 6 GHz
Three Meter Equivalent (TME) Field(1)	10 V/m
Input connector	N-type
Max. input power to reach TME Field(1)	0 dBm
Weight	11 kg
Number of internal power meters	2 (forward + reflected)
Directional coupler	integrated

1) Three Meter Equivalent (TME) Field: 1.5 m x 1.5m Homogeneous field @ 3 m and 2 dB field compression according to IEC 61000-4-3

### RadiGen RGN2006B

#### Performance



Frequency range	4 kHz - 6 GHz
Output level range	-70 dBm to +13 dBm
Output level settling time	< 1 msec
Output connector	sma
Modulation types	CW, AM, FM, Pulse and Gated Pulse
Frequency error	±1 ppm/year
Frequency resolution	1 Hz

### RadiSense® RSS2010S

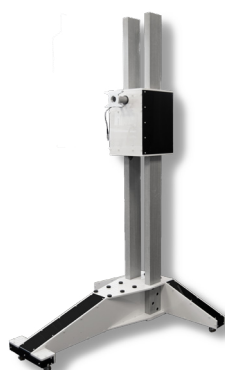
#### Performance



Frequency range	20 MHz - 10 GHz
Measuring range	0.1 V/m to 750 V/m
Maximum input level	1500 V/m
Frequency response	± 1 dB
Linearity	± 0.5 dB +/- 0.5 V/m
Isotropic deviation	< ± 0.25 dB @ 1 GHz
Electrical measuring volume	117 cm <sup>3</sup>

### RadiTower RTW3000A

#### Performance



Mast height	2 meter
Type	Non reflective
Height adjustment	manual
Antenna polarisation	Automatic H/V
H/V control	Through RadiField supply card



Raditeq B.V. | Vijzelmolenlaan 3 | 3447GX Woerden | The Netherlands

[www.raditeq.com](http://www.raditeq.com) | T:+31 348 200 100