

Using MrSID Image Files in MicroStation

Settings

MrSID image files can be found at

[\\jj00wa42\Region 1\](#)

[\\jj00wa42\Region 2\](#)

[\\jj00wa42\Region 3\](#)

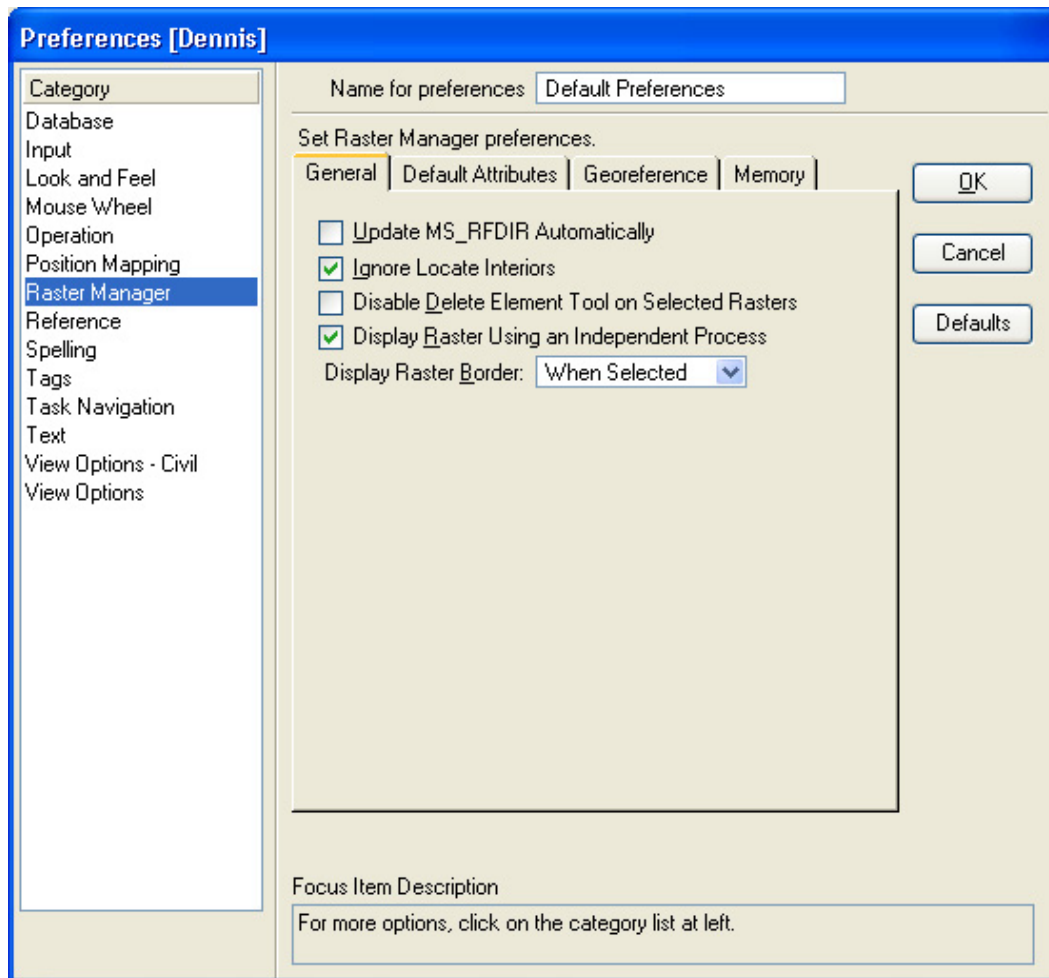
[\\jj00wa42\Region 4\](#)

In order to utilize the native MicroStation Raster Manager functionality to attach MrSID files, the following must be in place:

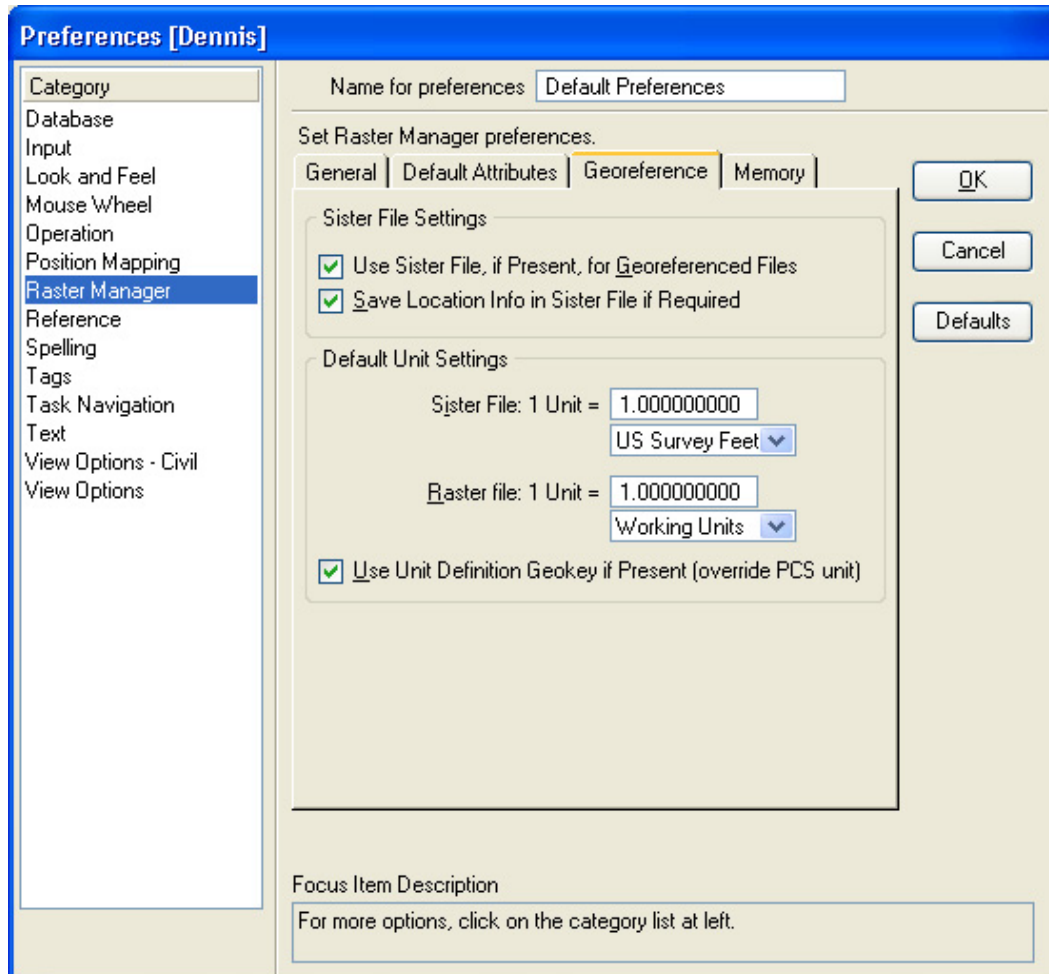
The working units in MicroStation must be in Survey Feet.

Under **Workspace > Preferences**, the following options must be set under **Raster Manager**.

On the **General** tab ...



On the **Georeference** tab ...

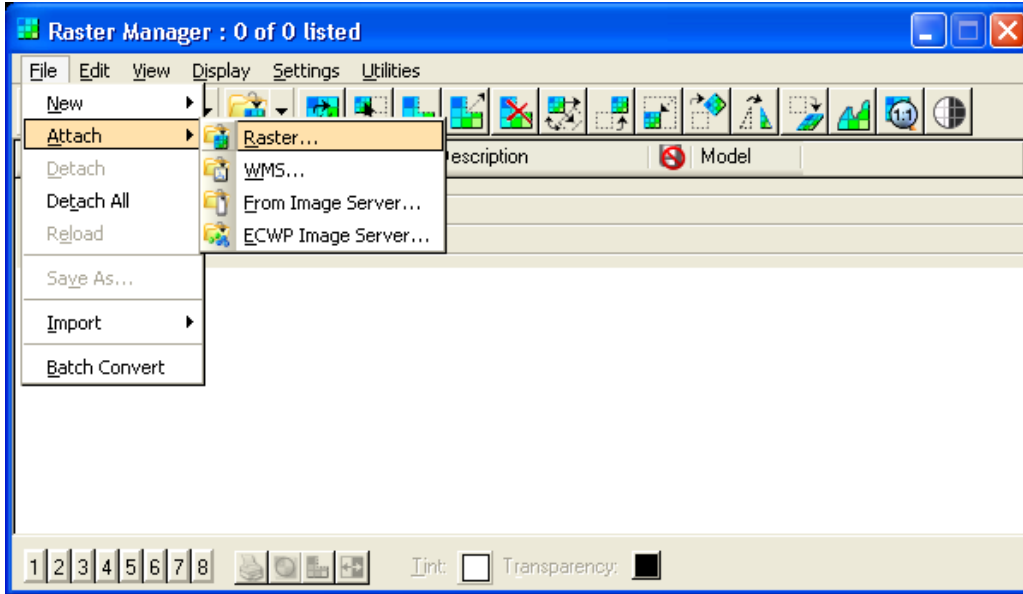


The Process

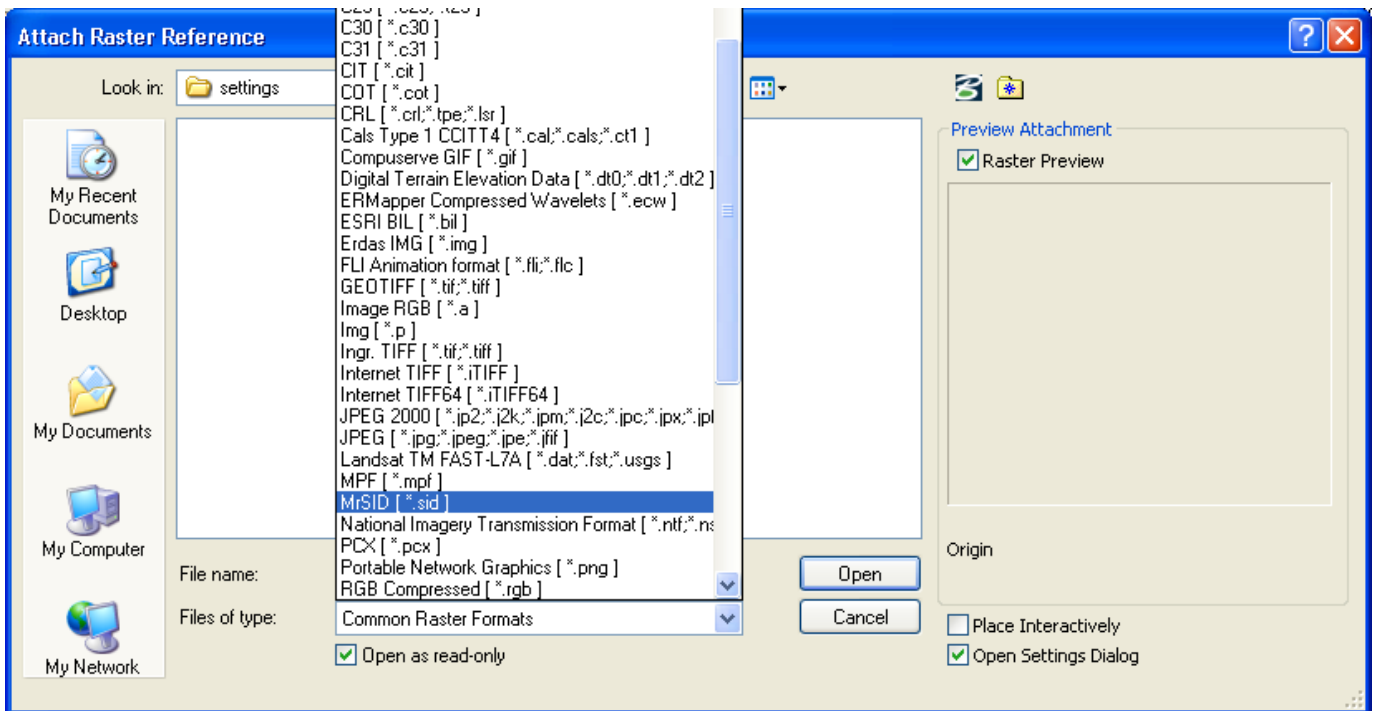
To load MrSID images:

Open **Raster Manager** from the MicroStation File menu.

Select the **Attach > Raster** option from the Raster Manager File menu.



From the **Common Raster Formats** list, select the **MrSID [* .sid]** option.



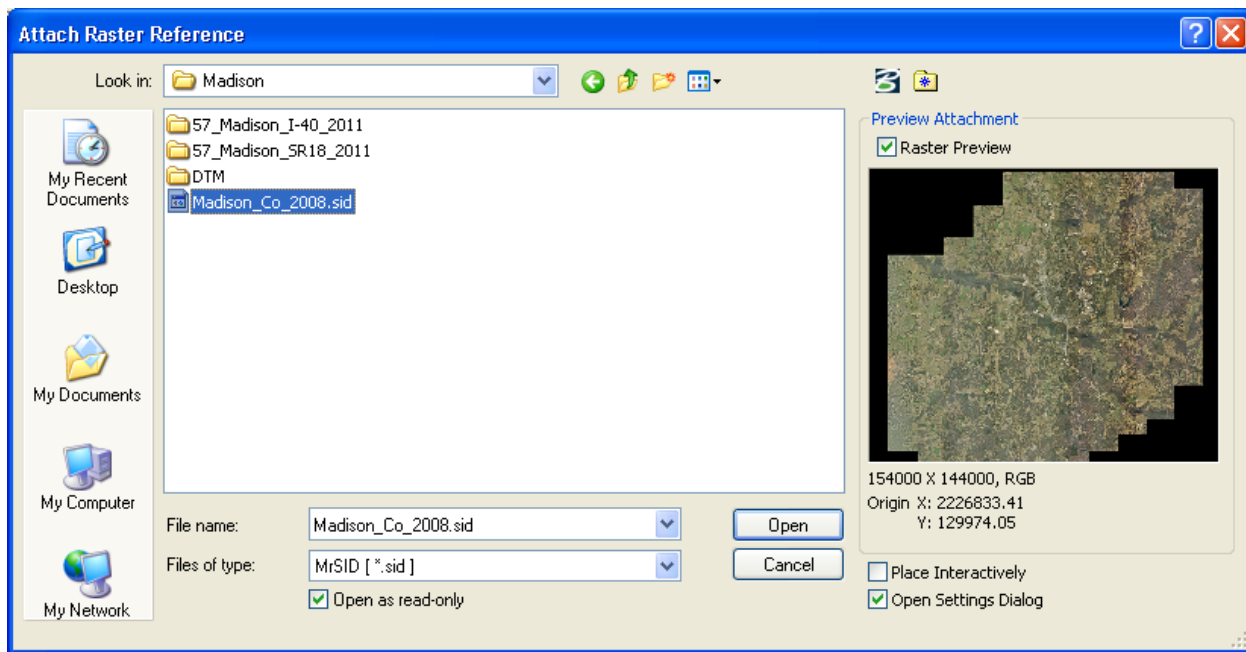
In the **Attach Raster Reference** dialog ...

Type \\jj00wa42\Region_* (1, 2, 3 or 4) into the **File Name:** entry field and hit enter.

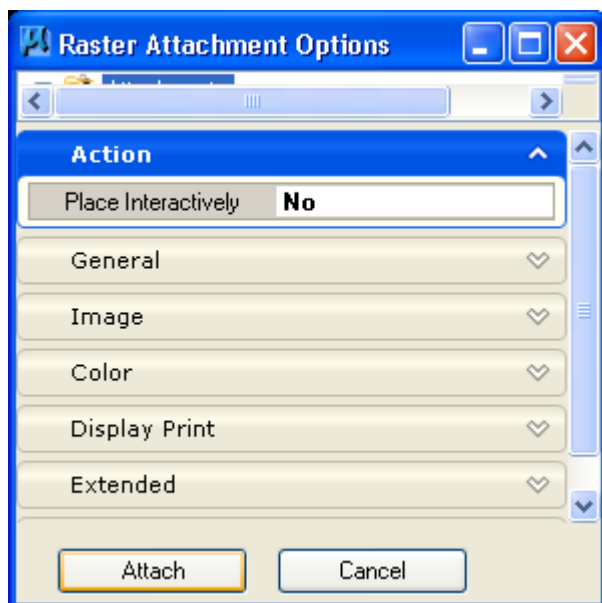
Open the desired County folder & select the MrSID image file.

Place Interactively should be clicked off since these files are georeferenced.

Click **Open**.

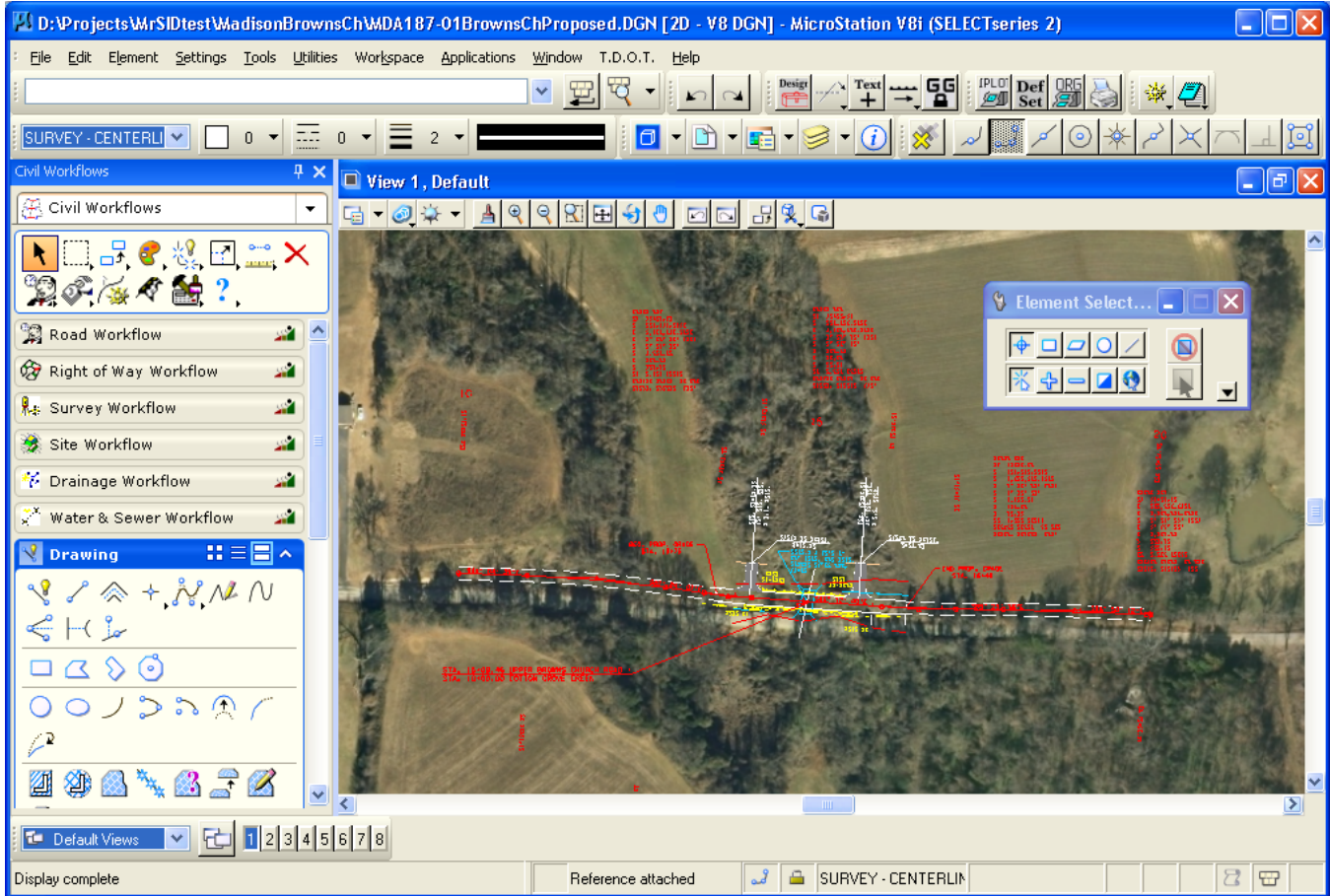


In the **Raster Attachment Options** dialog, leave as set and click **Attach**.



Considering the file size, network speed, and workstation hardware, an entire county wide mosaic should take 40 seconds to 2 minutes to load. The refresh rate during pan and zoom is faster than the attachment rate and will vary greatly depending on the zoom level.

Keep in mind that these are high resolution images and are very large, so copying them from the source location to your local hard drive could take an hour or more and is not recommended.

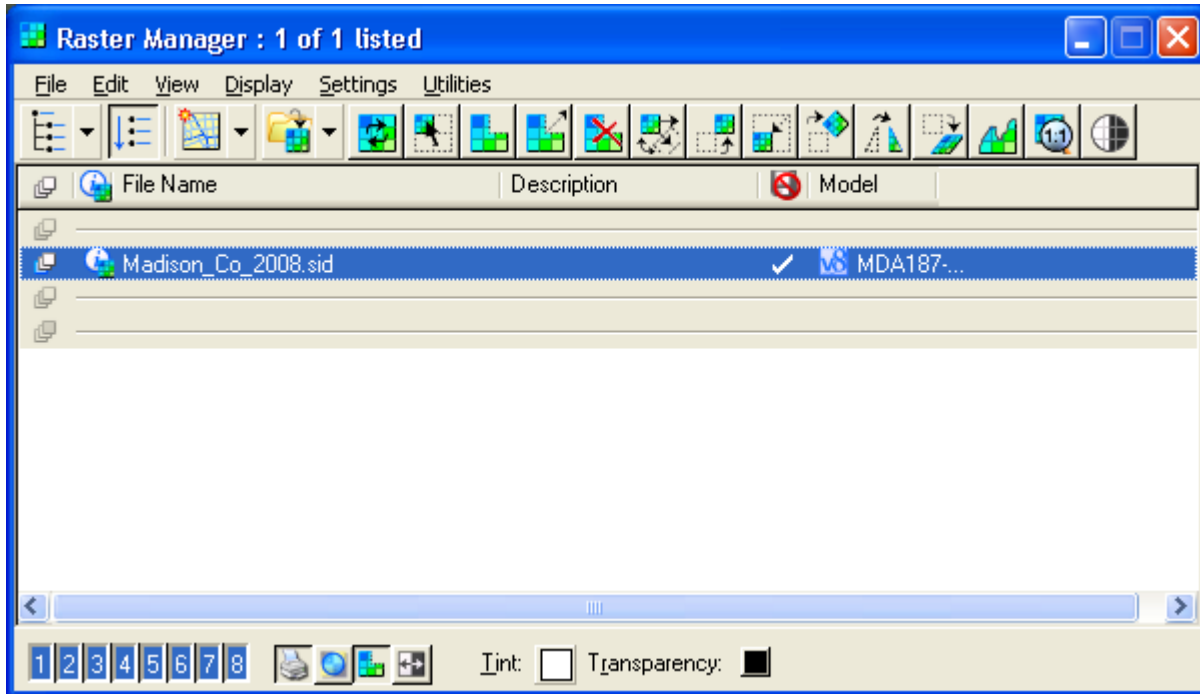


Adjusting the image location by the datum adjustment factor

MrSID image files are set to state plane coordinates, but since our project coordinates are adjusted for the local area by a datum adjustment factor, we will need to adjust the image location so that all data overlays correctly.

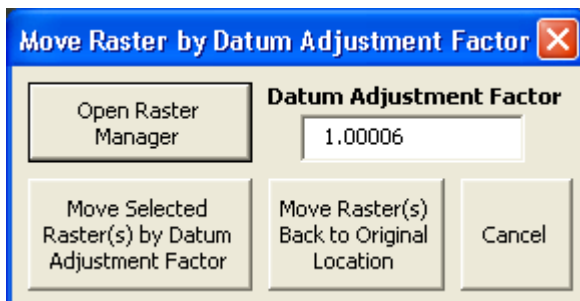
Open **Raster Manager** from the MicroStation File menu.

Select the image file whose location needs to be adjusted.



From the TDOT drop down menu, access the **Move Raster by Datum Adjustment Factor** tool.

Enter the project's datum adjustment factor and click the **Move Selected Raster by Datum Adjustment Factor** command button.



The MrSID image is moved by the datum adjustment factor. The image should now line up with your project data.

