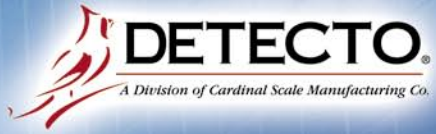


# HEALTH CARE CATALOG



**TO BE  
FEATURED ON  
"HOW IT'S  
MADE"**

[www.Detecto.com](http://www.Detecto.com)

# DETECTO®



|                                   |    |
|-----------------------------------|----|
| Mechanical Physician Scales       | 4  |
| ProDoc™ Digital Scales/Height Rod | 6  |
| 758C Weight Indicator/WinDDE      | 8  |
| ProMed™ Digital Physician Scales  | 9  |
| 750 Digital Weight Indicator      | 10 |
| Digital Physician Scales          | 11 |
| Digital Bariatric Scales          | 12 |
| Chair Scales                      | 14 |
| Wheelchair Scales                 | 15 |
| In-Floor Scales                   | 19 |
| Digital Baby Scales               | 20 |
| Mechanical Baby Scales            | 22 |
| Baby Scales/Lap Sponge Scales     | 23 |
| Hanging Scales                    | 24 |
| Weighmobile In-Bed Scales         | 25 |
| Portable Floor Scales             | 26 |
| Dynamometers/Box Holders          | 27 |
| Waste Receptacles                 | 28 |
| Step-On Cans                      | 29 |
| Mechanical Dietary Scales         | 30 |
| Digital Dietary Scales            | 31 |
| Veterinary Scales                 | 32 |
| Laundry Scales                    | 33 |
| EU-Only Scales                    | 34 |
| Index                             | 35 |



### CORPORATE HEADQUARTER CONTACTS:

203 East Daugherty Street, Webb City, MO 64870 USA  
**Fax:** (417) 673-5001  
**Web Site:** [www.Detecto.com](http://www.Detecto.com)

**Customer Service** 8 am - 5 pm CST Mon. - Fri.  
(800) 641-2008 or (417) 673-4631  
[detecto@cardet.com](mailto:detecto@cardet.com)

**Technical Support** 8 am - 5 pm CST Mon. - Fri.  
(866) 254-8261  
[tech@cardet.com](mailto:tech@cardet.com)

**Parts Department** 8 am - 5 pm CST Mon. - Fri.  
(800) 641-2045  
[parts@cardet.com](mailto:parts@cardet.com)

**Quality Assurance** 8 am - 5 pm CST Mon. - Fri.  
(417) 673-4631  
[qa@cardet.com](mailto:qa@cardet.com)

### INTERNATIONAL CONTACTS:

#### European Warehouse

Unit 17/18 Mercers Road  
Chapel Pond Hill  
Bury St. Edmunds, Suffolk, IP32 7HX  
Phone: 44-1284-703117 Fax: 44-1284-703559  
E-mail: [sales@detectoscale.co.uk](mailto:sales@detectoscale.co.uk)

#### Canadian Warehouse

1815 Ironstone Manor  
Unit 14A  
Pickering, Ontario L1W 3W9  
Phone: (905) 839-6239 Fax: (905) 839-6522  
E-mail: [canada@cardet.com](mailto:canada@cardet.com)



Products bearing this symbol require some assembly and setup that is not included in purchase price. Contact your local DETECTO scale technician for this service.



Products bearing this symbol are manufactured in compliance with recommendations set forth in Handbook 44, issued by the National Institute of Standards and Technology and have been issued a Certificate of Conformance under the National Type Evaluation Program.



This symbol indicates that the device has been evaluated and found to conform with the requirements for OIML R76 Class 3 (or Class 4 if specified). Model numbers for EU-Only Scales and their capacities and increments will differ from their general referenced product's information and may require the 758CSV indicator for conformity.



**DETECTO** is the largest independent scale manufacturer in the United States, providing over 108 years of experience in design, sales, and service support. In 2002, **DETECTO** adopted the motto, "**Building a Better Weigh.**"

These words truly represent our comprehensive line of medical products covering all facets of patient and physician applications. **DETECTO** represents a product name designed to meet your needs and one that will be supported for years to come.

**DETECTO's** model 439 mechanical physician scale series is the standard of the clinical weighing industry. This product continues to be the one most requested in the medical industry. In 2008, **DETECTO** introduced new digital weighing and height measuring devices with a professional doctor series of scales, better known as the ProDoc™ series. A complete product line of physician-grade scales with enhanced digital height and automatic BMI calculations, the ProDoc™ was designed for the home as well as for medical and hospital weighing applications. The ProDoc™ series joins **DETECTO's** complete range of digital scales, which include numerous features today's medical industry requires.

Whether you require scales for personal use, rehabilitation, pediatrics, wheelchairs, or special bariatric patient needs, **DETECTO** has the solution. In addition to personal and physician scales, Detecto offers a wide range of products, including step-on waste receptacles, glove dispensers, veterinary scales, dynamometers, dietary scales, and laundry scales.

This comprehensive catalog is designed for you to make the best decision for your specific needs. Our motto says it all: **DETECTO** takes great pride in "Building a Better Weigh" for our customers today.



(pictured left to right) Vice-President of Operations Larry Hicks, President David Perry, and Vice-President of Sales & Marketing Fred Cox

**O**<sup>®</sup>  
**H**  
**C**  
**E**  
**H**  
**E**  
**D**

# MECHANICAL PHYSICIAN SCALES



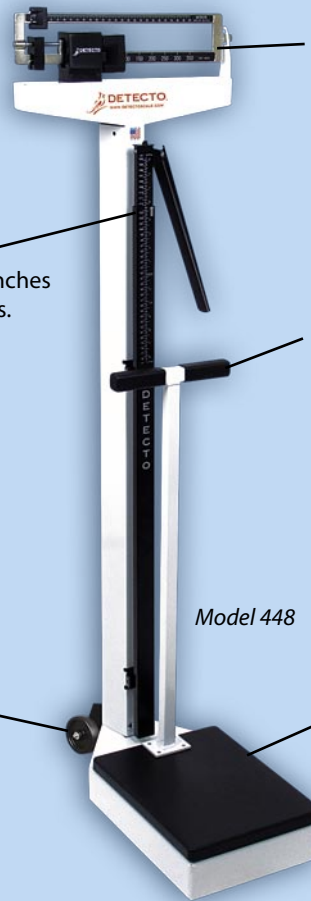
**400 LB /  
180 KG  
CAPACITY**

**Detecto Offers You  
More Weighing Ability  
For Your Money**



*Model 437*

**Choose From  
19 MODELS  
With A  
VARIETY OF  
FEATURES**



*Model 448*

**WEIGH BEAM**  
Dual reading, die-cast beam.

**HEIGHT ROD**  
Reads in both inches and centimeters.

**HANDPOST**  
An important aid for the elderly or weak individual.

**WHEELS**  
For easy transport.



**PLATFORM COVER**  
Easily removed for cleaning.

## Eye-Level Physician Scales

| MODEL | CAPACITY      |                | HEIGHT ROD<br>30 - 78 in<br>76 - 198 cm | WHEELS | HANDPOST | SHIPPING WEIGHT | UPC          |
|-------|---------------|----------------|---|--------|----------|-----------------|--------------|
|       | Avoirdupois   | Metric         |   |        |          |                 |              |
| 439   | 400 lb x 4 oz |                | •                                       |        |          | 38 lb/17.2 kg   | 809161133103 |
| 2391  |               | 180 kg x 100 g | •                                       |        |          | 37 lb/16.7 kg   | 809161133202 |
| 437   | 400 lb x 4 oz |                |   |        |          | 35 lb/15.8 kg   | 809161133301 |
| 2371  |               | 180 kg x 100 g |   |        |          | 35 lb/15.8 kg   | 809161133400 |
| 438   | 400 lb x 4 oz |                | •                                       | •      |          | 39 lb/17.6 kg   | 809161133509 |
| 2381  |               | 180 kg x 100 g | •                                       | •      |          | 39 lb/17.6 kg   | 809161133608 |
| 448   | 400 lb x 4 oz |                | •                                       | •      | •        | 43 lb/19.5 kg   | 809161133707 |
| 449   | 400 lb x 4 oz |                | •                                       |        | •        | 43 lb/19.5 kg   | 809161133806 |
| 2491  |               | 180 kg x 100 g | •                                       |        | •        | 43 lb/19.5 kg   | 809161133905 |
| 339   | 400 lb x 4 oz | 175 kg x 100 g | •                                       |        |          | 35 lb/15.8 kg   | 809161134001 |
| 337   | 400 lb x 4 oz | 175 kg x 100 g |   |        |          | 35 lb/15.8 kg   | 809161134100 |
| 338   | 400 lb x 4 oz | 175 kg x 100 g | •                                       | •      |          | 39 lb/17.6 kg   | 809161134209 |
| 349   | 400 lb x 4 oz | 175 kg x 100 g | •                                       |        | •        | 43 lb/19.5 kg   | 809161134308 |

**Platform Size:** 10.5"W x 14.5"D/27 cm W x 37 cm D  
**Scale Height:** 59"/150 cm



## Stainless Steel Mechanical Eye-Level Health Care Scales

Enjoy the classic elegance of beautiful stainless steel in your Detecto mechanical weighbeam scale. A platform cover that lifts off easily combined with the protective stainless steel casing makes cleanup a breeze. Water damage from mopping and high humidity areas around swimming pools is a thing of the past.



| MODEL | CAPACITY      |                | HEIGHT ROD<br>30 - 78 in<br>76 - 198 cm | SHIPPING WEIGHT | UPC          |
|-------|---------------|----------------|---|-----------------|--------------|
|       | Avoirdupois   | Metric         |   |                 |              |
| 439S  | 400 lb x 4 oz |                | •                                       | 38 lb/17.2 kg   | 809161132304 |
| 2391S |               | 180 kg x 100 g | •                                       | 37 lb/16.7 kg   | 809161132403 |
| 437S  | 400 lb x 4 oz |                |   | 35 lb/15.8 kg   | 809161132502 |
| 2371S |               | 180 kg x 100 g |   | 35 lb/15.8 kg   | 809161132601 |
| 339S  | 400 lb x 4 oz | 175 kg x 100 g | •                                       | 38 lb/17.2 kg   | 809161132700 |
| 337S  | 400 lb x 4 oz | 175 kg x 100 g |   | 35 lb/15.8 kg   | 809161132809 |

| ACCESSORY   | MODEL      | DESCRIPTION   | UPC          |
|-------------|------------|---|--------------|
| Height Rods | 3PHTROD-1  | Physician scales only.  | 809161134407 |
|             | 4PHTROD-3  | For waist-high digital scales models 6029 and 6029KG.   | 809161134704 |
|             | 3PHTROD-WM | Wall-mount height rod.  | 809161134803 |
| Wheels      | 3PWHL      | Wheels for scale portability. For use with all eye-level physician scales and models 8430 and 8437. | 809161134902 |
| Handpost    | 3PHNDPST   | For replacement use on physician scales only.   | 809161135008 |



Cert. No. 91-162

## Certifier Scale

This special purpose eye-level beam scale with dual wheels and non-slip gray mat is "Legal for Trade," which makes it ideal for those who require a scale that is certified by weights and measures officials. A must for weight loss clinics and school wrestling teams! Optional height rod and handpost models are available.

| MODEL | CAPACITY                        | DESCRIPTION                        | UPC          |
|-------|---------------------------------|------------------------------------|--------------|
| 442   | 350 lb x 4 oz / 160 kg x 100 kg | Certifier scale with high accuracy | 809161135107 |

**Platform Size:** 13.75"W x 18.5"D/35 cm W x 47 cm D    **Shipping Weight:** 68 lb/31 kg



# PRODOC™ DIGITAL DOCTOR SCALES

These professional doctor scales are designed to meet the accuracy you depend on. The models PD100 and PD200 provide BMI (Body Mass Index) by conveniently selecting your height with easy-to-use scroll keys.

The ProDoc™ series heavy-duty scales can weigh up to 480 lb/220 kg while providing you with the accuracy you require with 0.2 lb/0.1 kg increments. The LCD display provides easy-to-view 1-inch-high (25 mm) readouts.

DETECTO

## PD100

### Low-Profile Physician Scale with Remote Display

- Wall/desk mounting bracket for offices and exam rooms.
- Portable with optional carrying case for visiting nurses.
- Position weight display up to 87"/220 cm from scale.



Optional PRODOC-CASE for PD100



PD100



PD200



PD100 and PD200 arrive fully assembled.



All ProDocs™ feature adjustable locking feet and bubble level for accurate weighing every time!

## DETECTO PD200

### Space-Saving Physician Scale

- Exam rooms - offices - medical use.
- Home use: includes four patient/family member weight memory recalls.
- Raised weight display for convenient viewing while standing on the scale.

The ProDoc's™ single-piece, forged-steel base creates stability and ensures solid patient support.

| MODEL    | CAPACITY / MEASUREMENT            | DESCRIPTION                                   | SHIPPING WEIGHT | UPC          |
|----------|-----------------------------------|---|-----------------|--------------|
| PD100    | 480 lb x 0.2 lb / 220 kg x 0.1 kg | Low-profile scale with remote display         | 26 lb / 12 kg   | 809161146905 |
| PD200    | Same                              | Compact design scale                          | 28 lb / 12.5 kg | 809161147001 |
| PD300    | Same                              | Convenience height scale                      | 33 lb / 15 kg   | 809161147100 |
| PD300DHR | Same                              | Convenience height scale - digital height rod | 40 lb / 18 kg   | 809161147209 |
| PD300MHR | Same                              | Convenience height scale - manual height rod  | 40 lb / 18 kg   | 809161147308 |
| DHR      | 43"/110 cm - 79"/200 cm           | Optional digital height rod for PD300         | 7 lb / 3 kg     | 809161147506 |
| MHR      | 30"/76 cm - 78"/198 cm            | Optional manual height rod for PD300          | 7 lb / 3 kg     | 809161147605 |
| DHRWM    | 43"/110 cm - 79"/200 cm           | Standalone wall-mount digital height rod      | 8 lb / 3.7 kg   | 809161147407 |

**Platform Size:** 3.33" H x 12.5" W x 13" D / 8 cm H x 32 cm W x 33 cm D

**Power:** 6 "AA" Alkaline batteries (not included) or optional 9V AC/DC power adapter (not included) - DHRWM, battery power only



## PROFESSIONAL DOCTOR SCALES

PD300

DETECTO

DETECTO

### PD300

#### Comfort-Height Digital Physician Scale

- 48" high, comfort-height display for easy viewing of measurements.
- Adjustable feet for any floor surface.
- Built-in wheels for fast transport.
- Heavy-duty scale base

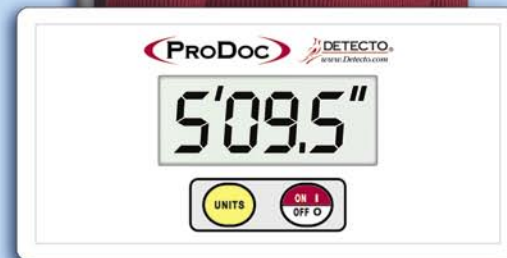
DETECTO

*PD300DHR includes digital height rod*

## Multiple Configurations to Fit Your Application!

*Detecto's ProDoc™ features selectable Sleep Mode (up to 9 minutes) and selectable Auto Shut-off (up to 9 minutes) plus Memory Function which stores and recalls up to 4 patient weights.*

***Detecto's model PD300DHR features digital weight and height measurement for accurate calculation of Body Mass Index. Detecto's time-saving digital height rod displays patient height quickly on the weight display. Simply step on the scale and touch one key to see your weight and one key to automatically calculate BMI.***



## When you require height measurements fast!

### Model DHRWM Standalone Wall-Mount Digital Height Rods

***Detecto's exclusive digital height technology. Receive height readings quickly, accurately, and comfortably.***

***Automatic height viewing on the remote display, positioned where you need it with Detecto's wall-mount or desktop bracket.***



**DHRWM**

- Fast, accurate 1"/25 mm high digital height LCD readouts.
- Modern, clean design.
- Display can easily be mounted on wall or desk.
- Measures 43"/110 cm - 79"/200 cm.
- Powered by 6 "AA" Alkaline batteries (not included).
- 69"/175 cm cable length from display to height rod.

# 758C DIGITAL WEIGHT INDICATOR / WINDDE



## SERIAL CONNECTIVITY PROVIDES:

### OUTPUT TO PRINTER

Print weight, BMI, time, date, and height

### SEND DATA TO PC

Excellent for efficient electronic medical record keeping

11:23, 02/15/05  
ID: 12548796  
BMI: 28.6  
Height: 6' 0.1"  
Weight: 212.4 lb G



Select a P220 Thermal Printer (above) or P185 Ticket Printer (right) for printing weight data from the 758C indicator.

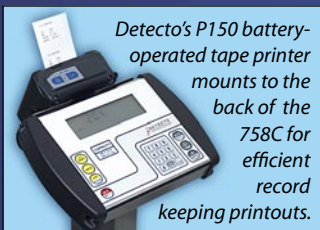


## LEGAL FOR TRADE

Meets performance specifications and is a higher grade digital indicator than the competition.

Cert. No. 06-104

The **MODEL 758C DISPLAY** is the most versatile clinical scale weight display available, with usage ranging from wheelchair-based applications to electronic medical records updating. A full numeric keypad allows fast entry of wheelchair weight. For those applications requiring weight, height and BMI percentages simultaneously, the 758C is the right choice. The legal-for-trade 758C also includes an EMR-ready RS-232 connection to a PC or printer standard. Detecto offers custom programming to connect the 758C with your EMR software package (consult factory).



Detecto's P150 battery-operated tape printer mounts to the back of the 758C for efficient record keeping printouts.

- 0.5 inch high graphic display for viewing weight, height and BMI percentage calculations simultaneously.
- 11-digit patient ID entry for BMI tracking.
- Lock/Release key for viewing weight after the patient steps from the scale.
- Steel construction for years of service.
- Made in USA for factory support.



## BATTERY POWER

The 758C is battery powered for use with portable scales, so you can take the scale to the patient. An optional AC adapter is also available.

## YOUR WEIGHT IN WINDOWS®

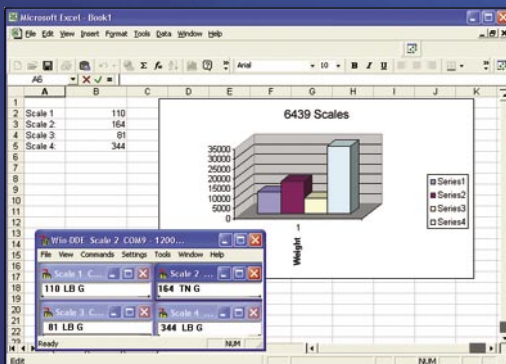
Easily put YOUR WEIGHT IN WINDOWS® with Detecto's WinDDE 2.0 Server and Detecto's 758C. Communicate with up to 20 weight indicators connected to a computer via standard serial port or optional Ethernet (using TCP/IP). WinDDE allows the weight and status of the indicators to be transferred directly into databases and spreadsheets, such as Microsoft Access® and Excel®.

| MODEL  | DESCRIPTION                   | UPC          |
|--------|-------------------------------|--------------|
| WinDDE | Weight capture to PC software | 809161135800 |

## WIRED AND WIRELESS CONNECTIVITY SOLUTIONS

With Detecto's 758C display you can transmit ASCII weight data to a printer, PC, or Local Area Network via a serial cable connection, optional TCP/IP module, or by optional wireless transmission.

# WinDDE



## DYNAMIC DATA EXCHANGE





Model 6437

## Eye-Level Digital Physician Scales



This scale features eye-level "at-a-glance" convenience of a battery-powered 0.5"/12.7 mm high-contrast LCD display. With the push of a button, readings appear in pounds OR kilograms and the weight display also calculates Body Mass Index. The platform cover is easily removed for cleaning. Handpost and height rod combinations are also available.

| MODEL     | CAPACITY                          | DESCRIPTION                  | UPC          |
|-----------|-----------------------------------|------------------------------|--------------|
| 6437      | 400 lb x 0.2 lb / 180 kg x 0.1 kg | No Height Rod                | 809161135909 |
| 6439      | Same                              | With Height Rod              | 809161136005 |
| 6449      | Same                              | With Handpost and Height Rod | 809161136104 |
| 6800-1045 |                                   | AC Adapter                   | 809161136203 |

**Platform Size:** 10.5"W x 14.5"D/27 cm W x 37 cm D  
**Scale Height:** 59"/150 cm  
**Model 6439 Height Rod:** 30" - 78" and 76 cm - 198 cm  
**Shipping Weight:** 6437 - 35 lb/16 kg 6439 - 38 lb/17 kg



**758C** Please see page 8 for additional weight display features.



Model 6439



Model 8430

## Waist-High Digital Physician Scales

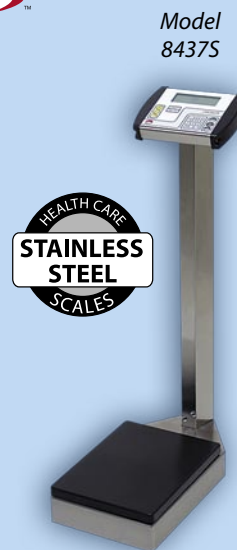


| MODEL     | CAPACITY                          | DESCRIPTION                     | UPC          |
|-----------|-----------------------------------|---------------------------------|--------------|
| 8437      | 400 lb x 0.2 lb / 180 kg x 0.1 kg | No Height Rod                   | 809161136302 |
| 8437S     | Same                              | No Height Rod Stainless Steel   | 809161133004 |
| 8430      | Same                              | With Height Rod                 | 809161136401 |
| 8430S     | Same                              | With Height Rod Stainless Steel | 809161132908 |
| 6800-1045 |                                   | AC Adapter                      | 809161136203 |

**Platform Size:** 10.5"W x 14.5"D/27 cm W x 37 cm D  
**Scale Height:** 37.5"/95 cm  
**Model 8430/8430S Height Rod:** 30" - 78" and 76 cm - 198 cm  
**Shipping Weight:** 8437/8437S - 31 lb/14 kg 8430/8430S - 34 lb/15.4 kg



**758C** Please see page 8 for additional weight display features.



Model 8437S



## Digital General Purpose Scales



Uses for these lightweight, portable scales are almost limitless. With detachable indicators and built-in carrying handles, they go with you anywhere weighing is needed. Their large, easy-to-clean platforms (2" H x 18" W x 14" D/6 cm H x 46 cm W x 36 cm D) feature a black slip-proof mat, leveling eye, and non-skid plastic feet for stability.

| MODEL       | CAPACITY                          | SHIPPING WEIGHT | UPC          |
|-------------|-----------------------------------|-----------------|--------------|
| GP-400-758C | 400 lb x 0.2 lb / 200 kg x 0.1 kg | 31 lb / 14 kg   | 809161136500 |
| 6800-1045   | AC Adapter                        | 1 lb / 453 g    | 809161136203 |

**758C** Please see page 8 for additional weight display features.



Cert. No.  
758C Display: 06-104  
GP-400 Base: 94-098



# 750 DIGITAL WEIGHT INDICATOR



The **MODEL 750 DISPLAY** features an easy-to-use keypad and extra-large display perfect for patient self-weighing and viewing by the attending nurse or physician. A quick and simple BMI calculator with a scroll feature to input height allows you the ease of BMI calculation when you require it. The durable design and easy-to-replace "AA" batteries makes the 750 perfect for all scales in clinics, hospitals, and physician offices. The 750 even recharges rechargeable "AA" batteries during usage.

*Simply push the Body Mass Index key and utilize the toggle arrows to adjust patient height for BMI calculation while weighing.*

- Extra-large, 0.75 inch high easy-to-read LCD display.
- Engineered for freedom of patient weighing.
- Compact design is ergonomic and easy for the patient to weigh.
- Use either 6 "AA" rechargeable batteries or the optional AC adapter.
- Lock/Release key for viewing weight after the patient steps away from the scale.
- Units conversion for LB or KG.
- Heavy steel construction for years of service.
- Made in USA for convenient parts and service requirements.



*The 750 is powered by either 6 "AA" rechargeable batteries or the optional AC adapter.*

*It's easy to remove from the scale column for battery replacement by pulling the locking pin.*

## Waist-High Digital Physician Scales

Contemporary styling and light yet rugged construction are key features of this 400 lb capacity scale. The slip-resistant base has a removable cover.



Model 6027



Model 6029

| MODEL     | CAPACITY                          | DESCRIPTION     | UPC          |
|-----------|-----------------------------------|-----------------|--------------|
| 6027      | 400 lb x 0.5 lb / 180 kg x 0.2 kg | No Height Rod   | 809161136609 |
| 6029      | Same                              | With Height Rod | 809161136708 |
| 6027KG    | 180 kg x 0.2 kg                   | No Height Rod   | 809161136807 |
| 6029KG    | Same                              | With Height Rod | 809161136906 |
| 6800-1045 |                                   | AC Adapter      | 809161136203 |

**Platform Size:** 11" W x 13" D / 28 cm W x 33 cm D

**Scale Height:** 38" / 97 cm

**Model 6029 and 6029KG Height Rod:** 30" - 78" and 76 cm - 198 cm

**Shipping Weight:** 6027(KG) - 25 lb/11 kg 6029(KG) - 28 lb/13 kg

**750** Please see page 10 for additional weight display features.

## Digital General Purpose Scales

Uses for these lightweight, portable scales are almost limitless. With detachable indicators and built-in carrying handles, they go with you anywhere weighing is needed. Their large, easy-to-clean platforms (2" H x 18" W x 14" D / 6 cm H x 46 cm W x 36 cm D) feature a black slip-proof mat, leveling eye, and non-skid plastic feet for stability. The digital displays both feature Body Mass Index calculation and may be mounted on a table top or wall. Operation is provided by battery power which increases the portability of these compact scales. For legal-for-trade usage, choose the GP-400-758C (page 9).

The perfect scale for those who need a lightweight, portable floor scale.



| MODEL      | CAPACITY                          | SHIPPING WEIGHT | UPC          |
|------------|-----------------------------------|-----------------|--------------|
| GP-400-750 | 400 lb x 0.2 lb / 200 kg x 0.1 kg | 31 lb / 14 kg   | 809161137002 |
| 6800-1045  | AC Adapter                        | 1 lb / 453 g    | 809161136203 |



**750** Please see page 10 for additional weight display features.

## Low-Profile Portable Physician Floor Scale

Lightweight and portable, making it perfect for mobile clinics, home care nurses, or wherever a portable scale with Body Mass Index is needed. The DR400-750 is battery powered and features a slip-resistant, textured mat to ensure patient safety when getting on and off the scale.



Optional black carrying case with handle protects the scale for easy transport.

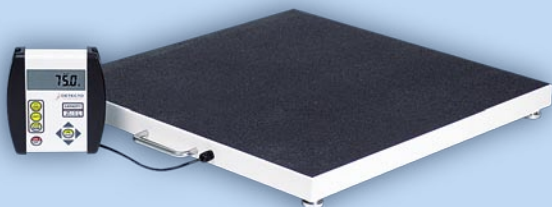
| MODEL       | CAPACITY                          | SHIPPING WEIGHT | UPC          |
|-------------|-----------------------------------|-----------------|--------------|
| DR400-750   | 400 lb x 0.2 lb / 180 kg x 0.1 kg | 31 lb / 14 kg   | 809161137101 |
| DR400C-CASE | Carrying Case                     | 1 lb / 453 g    | 809161137200 |
| 6800-1045   | AC Adapter                        | 1 lb / 453 g    | 809161136203 |

**Platform Size:** 2.25" H x 12" W x 12" D / 6 cm H 31 cm W x 31 cm D

**750** Please see page 10 for additional weight display features.

### 6800 Low-Profile Bariatric Scale

Ideal for any clinical application, this scale is low profile for patient comfort when stepping on and off the scale. With a built-in carrying handle, the 6800 is easy to transport from office to office when required. Utilizing Detecto's model 750 weight display and a universal bracket, the indicator may be mounted on a wall or desk for easy viewing. Powered by "AA" batteries, this scale is truly portable when power outlets are not accessible. 10 foot cable.



| MODEL     | CAPACITY                             | SHIP WEIGHT      | UPC          |
|-----------|--------------------------------------|------------------|--------------|
| 6800      | 800 lb x 0.2 lb /<br>360 kg x 0.1 kg | 45 lb /<br>20 kg | 809161137309 |
| 6800-1045 | AC adapter                           | 1 lb / 453 g     | 809161136203 |

**Platform Size:** 24"W x 24"D/61 cm x 61 cm

**750** Please see page 10 for additional weight display features.



### 6856 Waist-High Bariatric Scale

The 6856 features a larger platform and higher capacity than the 6855. Its balanced design is easy to tip back and transport on its 3" diameter, heavy-duty rubber wheels. The stainless steel handrails feature padded grips for patient assurance and stability. The 6856 is engineered specifically for weighing obese and unsteady patients and features a low-profile platform with non-skid surface and highly accurate weight display with Body Mass Index.

| MODEL     | CAPACITY                             | SHIP WEIGHT      | UPC          |
|-----------|--------------------------------------|------------------|--------------|
| 6856      | 800 lb x 0.2 lb /<br>360 kg x 0.1 kg | 85 lb /<br>39 kg | 809161137408 |
| 6800-1045 | AC adapter                           | 1 lb / 453 g     | 809161136203 |

**Platform Size:** 24"W x 24"D/61 cm x 61 cm

**750** Please see page 10 for additional weight display features.



### 6855 Waist-High Bariatric Scale

The 6855 features a balanced design that is easy to tip back and transport on its hard, heavy-duty rubber wheels. It features a slightly smaller platform and lower capacity than the 6856. The digital indicator's LOCK/RELEASE key retains weight so you can attend to the patient first, then record the weight. Powered by your choice of either batteries or optional AC adapter, the 6855 also has an auto-off function to conserve energy.

| MODEL      | CAPACITY                             | SHIP WEIGHT   | UPC          |
|------------|--------------------------------------|---------------|--------------|
| 6855       | 600 lb x 0.2 lb /<br>270 kg x 0.1 kg | 70 lb / 32 kg | 809161137507 |
| 6800-1045  | AC adapter                           | 1 lb / 453 g  | 809161136203 |
| 3PHTROD-WM | Height Rod                           | 6 lb / 2.7 kg | 809161137606 |

**Platform Size:** 18"W x 14"D/46 cm x 26 cm

**750** Please see page 10 for additional weight display features.



## Bariatric Flip Seat Chair Scale

The light and portable 6876 features Body Mass Index, battery or AC power, concealed wheels for quick mobility, padded retractable armrests, and a 24" x 24" (61 cm x 61 cm) square non-slip rubber mat platform. This scale is a hybrid standing/sitting scale. The seat flips up and down easily to allow weighing in a standing or sitting position depending on the comfort of the patient. It's equipped with retractable, padded armrests for ease in transferring patients to the chair scale and to accommodate patients with casts. The flip-up armrests double as handgrips for stability when weighing in a standing position. The modern design is streamlined and narrow enough to fit easily through most doorways. The 6876 features safety stops to prevent accidental tipping.

| MODEL     | CAPACITY                             | UPC          |
|-----------|--------------------------------------|--------------|
| 6876      | 600 lb x 0.2 lb /<br>270 kg x 0.1 kg | 809161137705 |
| 6800-1045 | AC Adapter                           | 809161136203 |

**Platform Size:** 24"W x 24"D/61 cm x 61 cm

**Shipping Weight:** 146 lb/66 kg



**750** Please see page 10 for additional weight display features.

Seat flips up and down to allow weighing in a standing or sitting position.



## Bariatric Flip Seat Chair Scale

The 6868's unique design features a flip-up seat for weighing in a standing or sitting position. The durable steel frame adds assurance to the weighing of obese patients and those requiring special assistance. When finished with the seat, simply raise it up for those who prefer standing during weighing.

| MODEL     | CAPACITY                             | UPC          |
|-----------|--------------------------------------|--------------|
| 6868      | 800 lb x 0.2 lb /<br>360 kg x 0.1 kg | 809161137804 |
| 6800-1045 | AC Adapter                           | 809161136203 |

**Platform Size:** 32"W x 34"D/81 cm W x 86 cm D

**Shipping Weight:** 147 lb/67 kg



**750** Please see page 10 for additional weight display features.

Seat flips up and down.



Features a unique flip-up seat. When finished, simply raise it up for those who prefer standing during weighing.



The 6868 tips back for easy transport. The large wheels and handrail make it easy to move from place to place.

The 6868's sturdy stainless steel handrails with padded foam hand grips, non-skid rubber mat, and extra-wide platform add comfort to the weighing of obese and unsteady patients. The compact design permits the scales to fit through doors and into patient's rooms for easy weighing (6868 requires door opening greater than 32").

## Mechanical Chair Scale



Developed to ensure patient safety and comfort as well as to reduce weighing time, Detecto mechanical chair scales are conveniently portable and offer easy side or front access for your frail, handicapped, or elderly patients. The arms raise easily on both models, so the patient can be conveniently assisted into and out of the chair scale. Die-cast, easy-to-read beams are readable from the front and back.

| MODEL | CAPACITY                          | UPC          |
|-------|-----------------------------------|--------------|
| 475   | 400 lb x 4 oz                     | 809161137903 |
| 4751  | 400 lb x 4 oz /<br>175 kg x 100 g | 809161138009 |

**Seat Size:** 17.5" H x 17.5" W / 44 cm H x 44 cm W

**Shipping Weight:** 78 lb/35 kg

## Digital Chair Scale

*Detecto simplifies the task of weight checks for frail, handicapped, and elderly patients with a selection of innovatively-designed chair scales, such as the 6475.*



These digital chair scales feature waist-high LCD displays allowing weighing with accuracy to 0.2 lb or 0.1 kilogram. Battery power and oversized wheels enhance their portability.

| MODEL     | CAPACITY                             | UPC          |
|-----------|--------------------------------------|--------------|
| 6475      | 400 lb x 0.2 lb /<br>180 kg x 0.1 kg | 809161138207 |
| 6475K     | 180 kg x 0.1 kg                      | 809161138306 |
| 6800-1045 | AC Adapter                           | 809161136203 |

**Seat Size:** 17.5" H x 17.5" W / 44 cm H x 44 cm W

**Shipping Weight:** 78 lb/35 kg

750

Please see page 10 for additional weight display features.

## Premier Digital Chair Scale

*Concealed wheels and flip-up footrest and arms. The display can be rotated to virtually any angle for easy viewing by the attendant.*



Ergonomics dictated this stylish, battery-powered chair scale's contemporary design. The footrests fold away to promote patient security when getting into or out of the scale.

| MODEL     | CAPACITY                             | UPC          |
|-----------|--------------------------------------|--------------|
| 6875      | 400 lb x 0.2 lb /<br>180 kg x 0.1 kg | 809161138108 |
| 6800-1045 | AC Adapter                           | 809161136203 |

**Dimensions:** 41.75" H x 29.375" W x 24" L /  
106 cm H x 75 cm W x 61 cm L

**Shipping Weight:** 70 lb/32 kg



750

Please see page 10 for additional weight display features.

## Rolling Chair Scale



Zero turning radius wheels.

This lightweight rolling chair scale features a flip-up footrest and lift-away armrests. Safety stops on the rear wheels allow for parking in one place without rolling. The 6880 features one load cell and 3" diameter oversized wheels.

| MODEL     | CAPACITY                             | UPC          |
|-----------|--------------------------------------|--------------|
| 6880      | 440 lb x 0.2 lb /<br>200 kg x 0.1 kg | 809161138405 |
| 6800-1045 | AC Adapter                           | 809161136203 |

**Seat Size:** 17.5" H x 17.5" W / 44 cm H x 44 cm W

**Shipping Weight:** 61 lb/28 kg



750

Please see page 10 for additional weight display features.

# WHEELCHAIR SCALES

## Mechanical Stationary Wheelchair Scales



This heavy-duty stationary wheelchair scale features a detachable ramp designed for a smooth approach and exit. The platform is designed to accommodate all sizes of wheelchairs. The 495 features a padded handrail for ambulatory patients and a non-skid mat. It features Detecto's famous die-cast, dual-sided, eye-level weighbeam graduated in 4 ounce or 100 gram increments. The weigh beam is located at a height above the platform where the patient or attendant can perform the weighing operation. Customers specializing in the care of non-ambulatory patients provided information which was transferred into features and benefits of these scales, evident the first time you use the scale!

| MODEL | CAPACITY        | SHIPPING WEIGHT | UPC          |
|-------|-----------------|-----------------|--------------|
| 495   | 400 lb x 4 oz / | 194 lb / 88 kg  | 809161138504 |
| 4951  | 180 kg x 100 g  | Same            | 809161138603 |

**Platform Size:** 30" W x 26" D / 76 cm W x 66 cm D

## Digital Stationary Wheelchair Scale



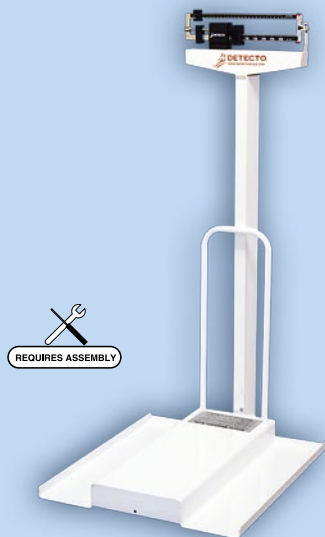
With the model 6495 heavy-duty digital wheelchair scale, you get speed and increased accuracy that only electronic weighing can provide. Weigh in pounds or kilograms at the press of a button. The EMR-ready weight display is mounted on a tilt mount which permits the indicator to be angled for easy viewing. A keypad for entry of known weights of empty wheelchairs is also provided, thus giving the exact weight of the patient accurately and instantly in large 0.5"/13 mm digits. The platform is designed to accommodate all sizes of wheelchairs and the 6495 also features a detachable ramp.

| MODEL     | CAPACITY                             | SHIPPING WEIGHT | UPC          |
|-----------|--------------------------------------|-----------------|--------------|
| 6495      | 400 lb x 0.2 lb /<br>180 kg x 0.1 kg | 177 lb / 80 kg  | 809161138702 |
| 6800-1045 | AC adapter                           | 1 lb / 453 g    | 809161136203 |

**Platform Size:** 30" W x 26" D / 76 cm W x 66 cm D

**758C** Please see page 8 for additional weight display features.

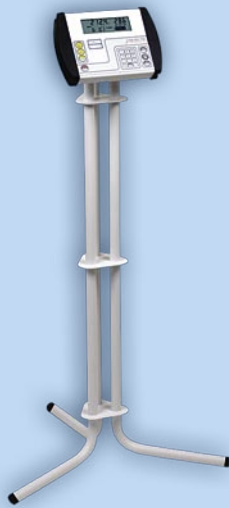
## Mechanical Stationary Wheelchair Scales



Built for use with any standard-size wheelchair, these scales offer the utmost in comfort for wheelchair-bound patients, convenience for nursing personnel and accuracy for important medical records. Detecto's sturdy design incorporates a standard eye-level physician scale with a detachable ramp, allowing for easy movement on and off the platform. The scale's beam is easily read from both sides, facilitating a faster weighing operation. The ramp kit (model 3PRAMP) is detachable, allowing for the scale's use as a stand-alone physician scale, or a kit may be attached to existing Detecto physician scales.

| MODEL  | CAPACITY        | SHIPPING WEIGHT | UPC          |
|--------|-----------------|-----------------|--------------|
| 485    | 350 lb x 4 oz   | 66 lb / 30 kg   | 809161138801 |
| 4851   | 160 kg x 100 g  | Same            | 809161138900 |
| 3PRAMP | Wheelchair ramp | 31 lb / 14 kg   | 809161139006 |

**Platform Size:** 27" W x 30" D / 69 cm W x 76 cm D



## DIS-2 Digital Indicator Stand

Detecto's DIS-2 digital indicator display stand is excellent for physicians' offices or clinics which require convenient weight display viewing and portability at the same time. This mobile stand is constructed of durable steel and is excellent for use with wheelchair scales and step-on portable scales. Just pick it up and move the stand along with your portable scale from location to location. The universal mounting bracket on the DIS-2 allows you to attach the Detecto 750 and 758C weight displays in seconds. To detach, simply unlock the indicator and slide it off the mounting bracket. 44" viewing height.

| MODEL | DIMENSIONS<br>(with indicator attached)                   | SHIPPING<br>WEIGHT | UPC          |
|-------|---|--------------------|--------------|
| DIS-2 | 23" W x 20" D x 45.5" H /<br>59 cm W x 51 cm D x 116 cm H | 13 lb /<br>6 kg    | 809161139105 |

EMR-  
READY



## 6500 Portable Bariatric Wheelchair Scale

With built-in ramps for entering and exiting the scale, the 6500 portable scale is perfect for any wheelchair application. The integral wheels and handles plus battery power make this scale portable and easy to move to from location to location. With the 6500, you may enter the wheelchair weight, so that only the patient weight is displayed. With a capacity of 800 lbs, this scale is excellent for bariatric needs as well.

| MODEL     | CAPACITY                             | SHIPPING<br>WEIGHT | UPC          |
|-----------|--------------------------------------|--------------------|--------------|
| 6500      | 800 lb x 0.2 lb /<br>300 kg x 0.1 kg | 65 lb /<br>29 kg   | 809161139204 |
| 6800-1045 | AC adapter                           | 1 lb / 453 g       | 809161136203 |

**Platform Size:** 30" W x 32" D / 76 cm W x 81 cm D (flat portion)

**758C** Please see page 8 for additional weight display features.



The BRW1000's integral handles make it easy to lift and lower into position. Built-in wheels permit the scale to be rolled anywhere.

EMR-  
READY



40"  
extra-wide  
platform

## BRW1000 Portable Bariatric Wheelchair Scale

Accommodating new extra-wide wheelchairs, Detecto's BRW1000 provides everything required for weighing bariatric patients. For extended patient comfort, the BRW1000 can store the weight of the chair, allowing clinical staff to simply roll the patient on the scale for quick and easy weighing. Detecto's BRW1000 provides comfort for the patient and saves valuable time in busy healthcare facilities. Heavy-duty construction, large rubber deck safety plate platform with integral ramp, and the 1,000 lb capacity makes this the perfect scale for weighing patients in manual or power wheelchairs, dialysis patients, or walk-ons. The BRW100 features EMR-ready serial connectivity and BMI calculation. The BRW1000 is light in weight and heavy in capacity!

| MODEL     | CAPACITY                               | SHIPPING<br>WEIGHT | UPC          |
|-----------|--|--------------------|--------------|
| BRW1000   | 1,000 lb x 0.5 lb /<br>450 kg x 0.2 kg | 75 lb /<br>34 kg   | 809161139303 |
| 6800-1045 | AC adapter                             | 1 lb / 453 g       | 809161136203 |

**Platform Size:** 40" W x 30" D / 102 cm W x 76 cm D

**758C** Please see page 8 for additional weight display features.





## 6550 Folding Portable Wheelchair Scale

This sturdy, but lightweight, scale can be used with wheelchairs, straight-legged chairs or as a stand-on scale, and its sloped ramps offer versatility by allowing loading from either side. The 6550's vertical fold-up feature, battery power, and heavy-duty wheels contribute to its ease of mobility and lack of needed storage space. With the 6550, tare weight may be either preset or keyed in directly and the patient's weight is automatically displayed.

**EMR-READY**



| MODEL     | CAPACITY                             | SHIP WEIGHT      | UPC          |
|-----------|--------------------------------------|------------------|--------------|
| 6550      | 800 lb x 0.2 lb /<br>360 kg x 0.1 kg | 91 lb /<br>41 kg | 809161139402 |
| 6800-1045 | AC adapter                           | 1 lb / 453 g     | 809161136203 |

**Platform Size:** 30"W x 32" D / 76 cm W x 81 cm D (flat portion)

**758C** Please see page 8 for additional weight display features.

**3**  
EU CLASS APPROVED AVAILABLE

## Health Care's MOST VERSATILE Multi-Tasking Scale

**4-WAY EASY TRANSPORT**  
With Dual Direction Wheels

The 6550's vertical fold-up design requires minimal floor space and allows easy transportation. The column folds down and latches securely into position, ready for transport in four directions.

### WEIGHING USE:



**The 6550 offers a wide range of versatility and weighing positions.**

The beauty of Detecto's sturdy but lightweight model 6550 lies in its versatility and ease of use. It can be utilized in multiple departments and in various ways. The scale's digital weight indicator is the industry's most advanced, featuring serial output to a printer or PC, battery or AC power, BMI calculation, yellow "quick keys" for basic weighing, and a bright, crisp LCD display.



## Detecto is The Physicians' Choice for Wheelchair Scales

**EMR-  
READY**



**3**  
EU CLASS  
APPROVED  
AVAILABLE

*The perfect scale for weighing patients in manual or power wheelchairs, dialysis patients, or walk-ons. The lightweight Roll-A-Weigh features built-in wheels for easy portability.*



### "Roll-A-Weigh" Wheelchair Scale

Featuring built-in handles, wheelstop, and wheels, the "Roll-A-Weigh" can be moved wherever you need it. Whether it's multiple weighing locations at a single facility or a stationary location, the "Roll-A-Weigh" gives you portability and ease of use. The "Roll-A-Weigh" features a weight display which can be mounted on the scale, or remotely on a wall or desk for convenient viewing. Overall dimensions: 32.5" W x 42.5" D x 3.5" H/83 cm W x 108 cm D x 9 cm H.

| MODEL            | CAPACITY                               | SHIPPING WEIGHT   | UPC          |
|------------------|--|-------------------|--------------|
| <b>CR-500D</b>   | 500 lb x 0.2 lb /<br>225 kg x 0.1 kg   | 113 lb /<br>51 kg | 809161139501 |
| <b>CR-1000D</b>  | 1,000 lb x 0.5 lb /<br>450 kg x 0.2 kg | Same              | 809161139600 |
| <b>6800-1045</b> | AC adapter                             | 1 lb / 453 g      | 809161136203 |

**Platform Size:** 30" W x 32.5" D/76 cm W x 83 cm D

**758C** Please see page 8 for additional weight display features.

### Geriatric/Bariatric Wheelchair Scale

The battery-operated models FHD-133-II and FHD-144-II scales have a black, nonskid rubber platform and ramp. The large platform accommodates walk-on patients, wheelchairs, or straight-legged chairs. This large capacity scale can be mounted flush with the floor if desired (please consult factory for all pit installations). The remote weight display is suitable for desk or wall mount and comes with 15'/4.5 m of cable. A 28.5"/72 cm ramp is included.



**EMR-  
READY**

| MODEL             | CAPACITY                               | SHIPPING WEIGHT    | UPC          |
|-------------------|--|--------------------|--------------|
| <b>FHD-133-II</b> | 1,000 lb x 0.2 lb /<br>450 kg x 0.1 kg | 315 lb /<br>143 kg | 809161139709 |
| <b>FHD-144-II</b> | Same                                   | 460 lb / 209 kg    | 809161139808 |
| <b>6800-1045</b>  | AC adapter                             | 1 lb / 453 g       | 809161136203 |

**Platform Size:** 133-II - 36"/91 cm square 144-II - 48"/122 cm square

**758C** Please see page 8 for additional weight display features.

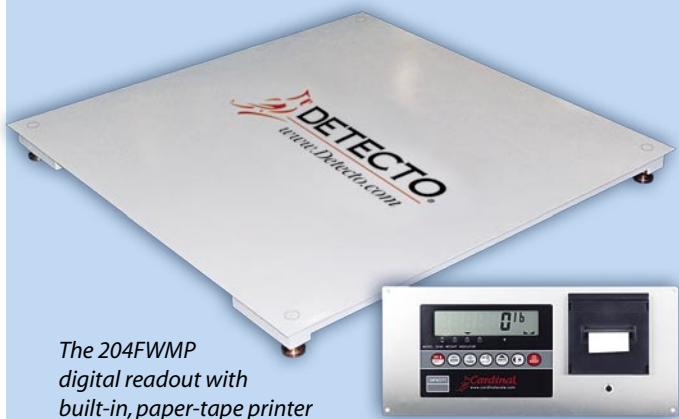


# IN-FLOOR SCALES

For Wheelchair, Chair, Stretcher, and Stand-on Weighing.



Scale is recessed into the floor for easy-access, multi-purpose weighing. Detecto model FH-144-II/CH shown with handrail and model 204FWMP digital weight indicator/printer combo.



The 204FWMP digital readout with built-in, paper-tape printer

**DETECTO'S IN-FLOOR SCALES ARE ALSO EXCEPTIONAL FOR DIALYSIS PATIENT MONITORING.**

The platform is level with the floor for easy access, so it also works well for multi-purpose weighing. The patient simply walks or is wheeled onto the platform and is weighed. Stretchers and beds fit easily onto the 6-foot long model with no need for dual scale systems. The weight is displayed on a recessed or wall-mounted digital readout. The digital indicator is AC powered for continual use and gives you a choice of pound or kilogram weight readings. Handrail optional.

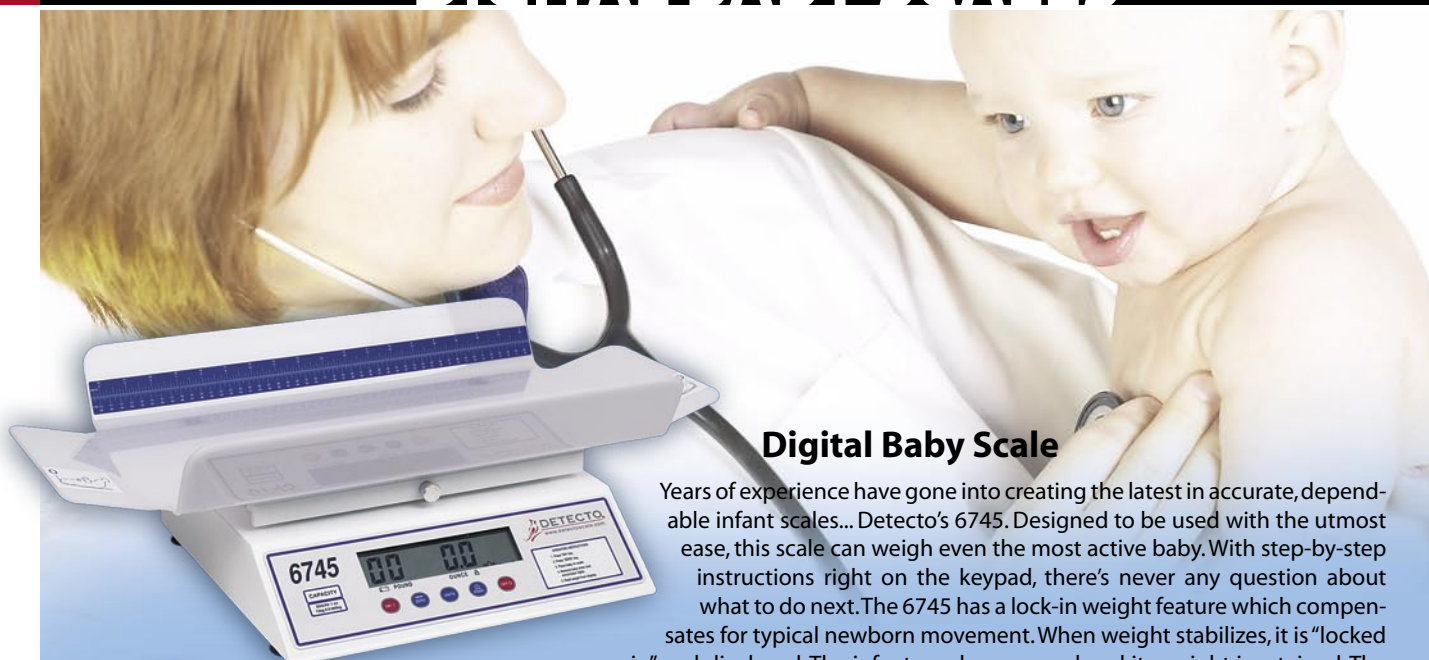
**FEATURES:**

- Pit Frame Provided
- Pushbutton Tare, Pounds or Kilograms
- Flush or Wall-Mounted 1" High LCD Readouts
- Smooth Painted Steel Platform
- Extra-Wide Platform to Accommodate Large Wheelchairs, Extra-Wide Dialysis Chairs, Beds, and Ambulatory Stretchers
- Model 204FWM Indicator Included (printer optional)



| MODEL         | CAPACITY                            | PLATFORM SIZE | SHIPPING WEIGHT | UPC          |
|---------------|-------------------------------------|---------------|-----------------|--------------|
| FH-133-II/C   | 1,000 lb x 0.2 lb / 455 kg x 0.1 kg | 36" W x 36" D | 165 lb / 75 kg  | 809161139907 |
| FH-133-II/CH* | 1,000 lb x 0.2 lb / 455 kg x 0.1 kg | 36" W x 36" D | 170 lb / 77 kg  | 809161140002 |
| FH-143-II/C   | 1,000 lb x 0.2 lb / 455 kg x 0.1 kg | 48" W x 36" D | 232 lb / 105 kg | 809161140101 |
| FH-143-II/CH* | 1,000 lb x 0.2 lb / 455 kg x 0.1 kg | 48" W x 36" D | 237 lb / 108 kg | 809161140200 |
| FH-144-II/C   | 1,000 lb x 0.2 lb / 455 kg x 0.1 kg | 48" W x 48" D | 240 lb / 109 kg | 809161140309 |
| FH-144-II/CH* | 1,000 lb x 0.2 lb / 455 kg x 0.1 kg | 48" W x 48" D | 245 lb / 111 kg | 809161140408 |
| FH-164-II/C   | 1,000 lb x 0.2 lb / 455 kg x 0.1 kg | 72" W x 48" D | 385 lb / 175 kg | 809161140507 |
| FH-164-II/CH* | 1,000 lb x 0.2 lb / 455 kg x 0.1 kg | 72" W x 48" D | 390 lb / 177 kg | 809161140606 |

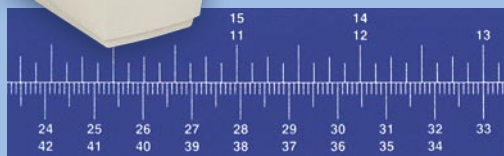
\* H suffix = Handrail comes with these designated models.



## Digital Baby Scale

Years of experience have gone into creating the latest in accurate, dependable infant scales... Detecto's 6745. Designed to be used with the utmost ease, this scale can weigh even the most active baby. With step-by-step instructions right on the keypad, there's never any question about what to do next. The 6745 has a lock-in weight feature which compensates for typical newborn movement. When weight stabilizes, it is "locked in" and displayed. The infant can be removed and its weight is retained. The 6745 features battery or AC operation and built-in measuring tape. Battery life is 250 continuous hours Alkaline / 80 continuous hours NiCad.

Optional label printer (Model P220 pictured left) provides documentation of baby's weight for transfer to medical record. The 6745 features serial output for use with a PC or printer.



| MODEL     | CAPACITY                             | SHIPPING WEIGHT  | UPC          |
|-----------|--------------------------------------|------------------|--------------|
| 6745      | 30 lb x 0.1 oz /<br>15 kg x 0.005 kg | 25 lb /<br>11 kg | 809161140705 |
| 6800-1006 | AC Adapter                           | 1 lb / 453 g     | 809161148008 |

**Tray Size:** 28" L x 14" W / 71 cm L x 36 cm W

**Power Source:** 6 "C" cell batteries or universal AC adapter

**Display:** 6-digit, 7-segment 1.0"/25 mm high transreflective LCD

## Rolling Baby Scale Cart

Detecto's stainless steel rolling baby scale cart features a lower shelf with three height adjustment levels allowing clinical staff to store patient records and instruments onboard the cart. It features 2.5" (64mm) diameter rubolene wheels with two locking wheels to keep the table in place and a recessed top to keep the scale or other items secure. It easily fits through doorways into patient rooms.



| MODEL     | DIMENSIONS   | SHIPPING WEIGHT | UPC          |
|-----------|--|-----------------|--------------|
| SPBT-1728 | 27.75" W x 16.75" D x 33.4" H /<br>71 cm W x 43 cm D x 85 cm H | 43 lb / 20 kg   | 809161140804 |

## Digital Tot Weigher

Infants readily accept the inclined seating of Detecto's digital tot weigher scale. With a fun, plastic, shell-shaped seat that is easy to clean, pound and kilogram readings, and heavy-duty base and understructure, this battery-powered scale has a lot to offer.



| MODEL     | CAPACITY                             | SHIPPING WEIGHT | UPC          |
|-----------|--------------------------------------|-----------------|--------------|
| 8432-CH   | 44 lb x 0.05 lb /<br>20 kg x 0.02 kg | 33 lb / 15 kg   | 809161140903 |
| 6800-1045 | AC Adapter                           | 1 lb / 453 g    | 809161136203 |

**Dimensions:** 20.25" H x 25" W x 22" D / 51 cm H x 64 cm W x 56 cm D

**750** Please see page 10 for additional weight display features.



All Detecto Baby Scales are engineered with the active baby in mind and built with the uncompromising quality you expect from Detecto.

## Digital Baby Scale

An easy-to-clean polystyrene tray cradles babies securely and comfortably on these dependable scales. A light, attractive scale, the portability is increased by the use of battery power with 6 "AA" size alkaline batteries. The high-contrast LCD display offers auto zero, auto shutoff and pushbutton tare.

| MODEL     | CAPACITY                          | SHIPPING WEIGHT | UPC          |
|-----------|-----------------------------------|-----------------|--------------|
| 8435      | 130 lb x 0.1 lb / 59 kg x 0.05 kg | 33 lb / 15 kg   | 809161141009 |
| 8435KG    | 59 kg x 0.05 kg                   | 33 lb / 15 kg   | 809161141108 |
| 6800-1045 | AC Adapter                        | 1 lb / 453 g    | 809161136203 |

**Tray Size:** 22" L x 14.75" W x 4.5" D / 56 cm L x 37 cm W x 11 cm D

**750** Please see page 10 for additional weight display features.



Optional black carrying case



## Digital Baby and Toddler Scale

Detecto's 8440 digital baby and toddler scale provides accurate, safe weighing of infants and features selectable weight units, lb-oz or kilograms, display hold, time and date clock function, and a memory function. Compact, battery-powered and portable, the 8440 is perfect for visiting nurses, home or wherever space is limited. Remove the tray for double use as a toddler scale.

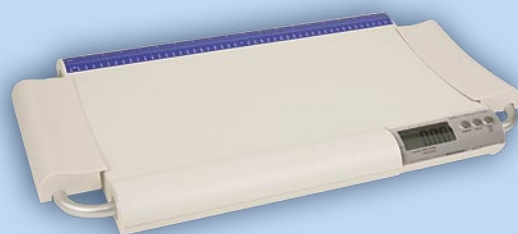
| MODEL     | CAPACITY                      | SHIPPING WEIGHT | UPC          |
|-----------|-------------------------------|-----------------|--------------|
| 8440      | 44 lb x 0.5 oz / 20 kg x 10 g | 8 lb / 3.6 kg   | 809161141207 |
| 8440-CASE | Carrying Case                 | 1 lb / 453 g    | 809161141306 |
| 6800-1037 | AC Adapter                    | 1 lb / 453 g    | 809161148107 |

**Tray Size:** 20.5" L x 10.75" W / 52 cm L x 27 cm W

**Platform Size:** 9.5" L x 6.5" W / 24 cm L x 17 cm W

**Power Source:** 6V DC (4 AA batteries or optional AC adapter)

**Display:** 4 3/4 digits LCD 1.0" / 25 mm high



Optional black carrying case built to scale size and with a handle protects the scale for easy transport.

## Digital Low-Profile Scale

The platform, base and padded carrying handles of this lightweight scale are incorporated into one complete unit making it easy to transport from place to place. Padded side rails and handle covers are slightly contoured ensuring that the baby will be cradled securely while being weighed. Measure the infant's length in inches or centimeters with the built-in measuring tape.

| MODEL     | CAPACITY  | SHIPPING WEIGHT | UPC          |
|-----------|---|-----------------|--------------|
| 8450      | 44 lb x 0.02 lb / 20 kg x 0.01 kg / 704 oz x 0.5 oz | 8 lb / 3.6 kg   | 809161141405 |
| 8450-CASE | Carrying Case                                       | 1 lb / 453 g    | 809161141504 |
| 6800-1039 | AC Adapter  | 1 lb / 453 g    | 809161148206 |

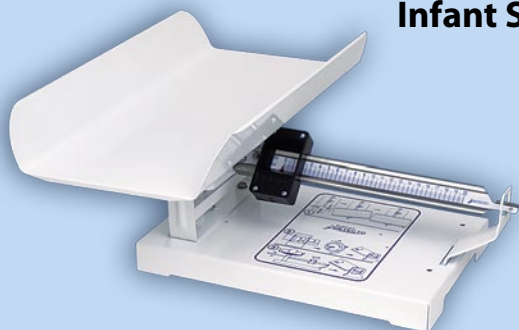
**Dimensions With Handle:** 24.5" L x 13.7" W x 2" H / 62 cm L x 35 cm W x 5 cm H

**Power Source:** 9V 100mA DC adapter / 9V battery

**Display:** 1.0" / 25 mm high LCD with 4 1/2 active digits



## Mechanical Infant Scales



This sturdy, compact scale incorporates springless balance beam construction. The white metal tray holds infants comfortably, while the beam is easy to read with blue graduations and numerals on white background. Comes in your choice of pounds or kilograms.

| MODEL | CAPACITY      | UPC          |
|-------|---------------|--------------|
| 243   | 20 lb x 2 oz  | 809161141603 |
| 2431  | 10 kg x 50 g  | 809161141702 |
| 2441  | 16 kg x 100 g | 809161141801 |

**Overall Size:** 10.5" H x 21" W x 19" D / 27 cm H x 53 cm W x 48 cm D

**Tray Size:** 2.5" H x 11" W x 19" D / 6 cm H x 28 cm W x 48 cm D

**Shipping Weight:** 21 lb / 10 kg

## Mechanical Infant Scales



This low-profile beam style scale features sturdy, compact construction with an easy-to-read balance beam and a white epoxy metal tray. Comes in your choice of pounds or kilograms. Perfect for hospitals, pediatrician's offices, clinics, or the home nursery.

| MODEL | CAPACITY        | UPC          |
|-------|-----------------|--------------|
| 253   | 41 lb x 0.25 oz | 809161142105 |
| 2531  | 20.5 kg x 10 g  | 809161142204 |

**Overall Size:** 6.75" H x 24" W x 13.75" D / 17 cm H x 61 cm W x 35 cm D

**Tray Size:** 2.75" H x 24" W x 11.5" D / 7 cm H x 61 cm W x 29 cm D

**Shipping Weight:** 30 lb / 14 kg

## Suspended Baby Scale

*Waterproof weighing trousers are attached to a heavy-duty zinc-plated 4"/10 cm S-hook providing a comfortable suspended sling seat for weighing babies.*

*(Model MCS25KGNT shown to the right)*

Perfect for doctors and nurses working in remote locations, this baby scale is lightweight and portable. It's designed to withstand rugged conditions and remain accurate through years of continuous service. The 8"/20 cm diameter shatter-proof dial features a white face with black graduations and numerals for high contrast readouts.



| MODEL     | CAPACITY      | UPC          |
|-----------|---------------|--------------|
| MCS25KGNT | 25 kg x 100 g | 809161141900 |
| MCS25KGN  | No sling seat | 809161142006 |

**Shipping Weight:** 5 lb / 2 kg

## Mechanical Tot Weigher

*Features an easy-to-read, die cast beam, heavy-duty welded steel construction, and polystyrene tray.*



Infants readily accept the inclined seating of Detecto's mechanical tot weigher scales. With a fun, plastic, shell-shaped seat that is easy to clean, pound and kilogram readings, and heavy-duty base and understructure, the 459-CH mechanical beam scale has a lot to offer. The die-cast beam can also be read from either side for added convenience.

| MODEL  | CAPACITY                              | UPC          |
|--------|---------------------------------------|--------------|
| 459-CH | 40 lb x 0.5 oz /<br>17.5 kg x 0.01 kg | 809161142303 |

**Overall Size:** 27" H x 22" W x 21" D / 69 cm H x 56 cm W x 53 cm D

**Shipping Weight:** 38 lb / 17 kg

## Mechanical Pediatric Scales

Easy-to-clean, washable polystyrene trays cradle babies securely on these dependable, portable scales. With three models, the 450, 451, and 459 give you a choice of pounds or kilograms or both. Light and attractive scales, these models features a heavy-duty, rust-resistant understructure and dual-reading, die-cast beams.

*These scales are engineered with the active baby in mind and are built with the uncompromising quality you expect from Detecto.*

| MODEL | CAPACITY                           | UPC          |
|-------|------------------------------------|--------------|
| 450   | 130 lb x 1 oz                      | 809161142402 |
| 451   | 65 kg x 20 g                       | 809161142501 |
| 459   | 40 lb x 0.5 oz /<br>17.5 kg x 10 g | 809161142600 |

**Overall Size:** 27" H x 22" W x 21" D / 69 cm H x 56 cm W x 53 cm D

**Tray Size:** 4.5" H x 22" W x 14.75" D / 11 cm H x 56 cm W x 37 cm D

**Shipping Weight:** 33 lb / 15 kg



# DETECTO'S UNBEATABLE REPUTATION

*Featuring removable stainless steel trays for easy cleaning and the compact size fits in any space.*



## Digital Lap Sponge / Wet Diaper Scales

Detecto packs a lot of functionality into these compact wet diaper/lap sponge scales, designed to answer your every need in measuring fluid output. Stainless steel construction makes the removable tray a snap to clean - a major consideration in the nursery where repeated use is the rule. Time is also precious around newborns, and this scale helps you make the most of it with an instantaneous display of 0.5"/13mm high readouts. Handy pushbutton tare simplifies weight determinations for adult incontinence and infant diapers. An AC adapter comes with both scales.

| MODEL  | CAPACITY      | SHIPPING WEIGHT  | UPC          |
|--------|---------------|------------------|--------------|
| AP-4KD | 4,000 g x 1 g | 5 lb /<br>2.3 kg | 809161142709 |

**Display:** 4 digit, 0.5"/13 mm high red LED

**Overall Size:** 2.75" H x 7.5" W x 7" D / 7 cm H x 19 cm W x 18 cm D

**Tray Size:** 2" H x 9" W x 6" D / 5 cm H x 23 cm W x 15 cm D

**Construction:** Stainless steel scale with stainless steel tray

| MODEL    | CAPACITY                          | SHIPPING WEIGHT  | UPC          |
|----------|-----------------------------------|------------------|--------------|
| PS5A-2KD | 70 oz x 0.1 oz /<br>1,998 g x 2 g | 5 lb /<br>2.3 kg | 809161142808 |

**Display:** 4 digit, 0.5"/13 mm high LCD

**Overall Size:** 2.75" H x 7.5" W x 7" D / 7 cm H x 19 cm W x 18 cm D

**Tray Size:** 2" H x 9" W x 6" D / 5 cm H x 23 cm W x 15 cm D

**Construction:** Scale is metal with baked enamel finish and stainless steel tray



Model PL400

## Digital Patient Lift Scales

This scale determines the weight of a person suspended from a portable patient lift and runs on one nine-volt battery. It incorporates a lock weight feature which stores the last weight reading when the unit is turned off.

| MODEL | CAPACITY                             | SHIPPING WEIGHT | UPC          |
|-------|--------------------------------------|-----------------|--------------|
| PL400 | 400 lb x 0.2 lb /<br>180 kg x 0.1 kg | 4 lb / 2 kg     | 809161142907 |
| PL600 | 600 lb x 0.2 lb /<br>270 kg x 0.1 kg | Same            | 809161143003 |

**Display:** 0.75"/19 mm high-contrast LCD

**Size:** 4.125"W x 2.125"D x 4"H/105 mm W x 54 mm D x 102 mm H  
(center of eye to center of eye; 5"/127 mm overall)



Model  
PL-HLKIT

## Patient Lift Kit Adapters

Detecto also provides kit adapters for other manufacturers' patient lifts.

| MODEL    | DESCRIPTION   | SHIP WEIGHT | UPC          |
|----------|---|-------------|--------------|
| PL-HLKIT | Connecting link kit connects the Hoyer® yoke to Detecto's PL400 or PL600 indicator. Includes 2 stainless steel links, 2 stainless steel spacers, 2 stainless steel shoulder bolts, and 2 elastic stop nuts.   | 2 lb / 1 kg | 809161143102 |
| PL-ICKIT | Connecting link kit connects the Invacare® models RPA600-1, RPL450, or 9805 patient lifts to Detecto's PL400 or PL600 indicator. Includes 2 stainless steel links, 1 stainless steel PL/lift adapter, 4 stainless steel shoulder bolts, 4 elastic stop nuts, and 6 stainless steel spacers. | 2 lb / 1 kg | 809161143201 |



Model  
PL-ICKIT



*The 11S400H general utility scale can work for multiple purposes and bulk weighings. It will weigh large or small quantities with speed and accuracy.*

## Mechanical Patient Lift Scale

Designed to be installed between the boom and sling of a patient lift, this ruggedly-built general utility scale features an extra large, 7"/18 cm diameter, single revolution, aluminum dial with black lettering and cast iron housing.

| MODEL   | CAPACITY      | SHIPPING WEIGHT | UPC          |
|---------|---------------|-----------------|--------------|
| 11S400H | 400 lb x 1 lb | 12 lb / 5 kg    | 809161109603 |

**Height:** 24.75"/63 cm

## Stainless Steel Autopsy Scale

The extra-large, recessed 14.5" (37cm) double dial is easily readable from both sides and is lithographed on metal with chrome-plated sashes and stainless steel bands. Stainless steel housing and a stainless steel commodity pan enhance the clean, attractive appearance.

| MODEL  | CAPACITY             | SHIPPING WEIGHT | UPC          |
|--------|----------------------|-----------------|--------------|
| T3530A | 32 lb - 10 lb x 1 oz | 33 lb / 15 kg   | 809161143300 |

**Revolutions:** 3.2

**Pan:** 15" (38cm) round stainless steel



Cert. No.  
88-110







  
REQUIRES ASSEMBLY

## Digital In-Bed Scale

Designed for fast, accurate weighing, the IB400 scale features a flame-retardant, antibacterial, self-deodorizing stretcher which is placed under the patient and hydraulically lifted inches from the bed. The tare function lets you easily subtract the weight of bedding. One nurse can quickly gather data from an entire floor, without wasted motion or patient discomfort! Safety features include locking casters and a lockable base widening stance for stability. Battery operation increases the portability of these in-bed scales.

**Under Bed Clearance:** 4.8"/12 cm high

**Dimensions:** 53"H x 50" L x 25.25"W/1.3 m H x 1.2 m L x 64 cm W

**Stretcher:** 6'/1.8m long, Thermoplastic Sure-Chek® fabric

**Adjustable Weighing Arm:** 25.75" to 72.25" / 64 cm to 1.9 m high

**750** Please see page 10 for additional weight display features.

| MODEL        | CAPACITY / DESCRIPTION                                | SHIPPING WEIGHT | UPC          |
|--------------|---|-----------------|--------------|
| IB400        | 400 lb x 0.1 lb / 180 kg x 0.1 kg                     | 290 lb / 132 kg | 809161143409 |
| 0046-C065-08 | 4' / 1.2 m pediatric stretcher - Sure-Chek® 20 fabric | 4 lb / 1.8 kg   | 809161143508 |
| 0046-C007-08 | 6' / 1.8 m adult stretcher - Sure-Chek® 20 fabric     | 4 lb / 1.8 kg   | 809161143607 |
| 6800-1045    | AC Adapter  | 1 lb / 453 g    | 809161136203 |



  
REQUIRES ASSEMBLY

## Heavy-Capacity In-Bed Scale

The IB600 in-bed scale lets you easily weigh patients who are confined to their bed and is ideal for intensive care, surgical recovery and geriatric units. Heavy-duty, yet transportable, these self-contained scales easily maneuver under beds and have a stretcher holder, hydraulic lift and six foot stretcher made of flame retardant, antibacterial, self-deodorizing Thermoplastic Sure-Chek® fabric. The sturdy hoop assembly support patients securely and weight can be taken even if the patient is not perfectly centered on the stretcher.

**Under Bed Clearance:** 4.8"/12 cm high

**Dimensions:** 60" H x 65.9" L x 31.5" W/152 cm H x 167 cm L x 80 cm W

**Stretcher:** 6'/1.8m long, Thermoplastic Sure-Chek® fabric

**Adjustable Weighing Arm:** 25.75" to 72.25" / 64 cm to 1.9 m high

**750** Please see page 10 for additional weight display features.

| MODEL        | CAPACITY / DESCRIPTION                              | SHIPPING WEIGHT | UPC          |
|--------------|---|-----------------|--------------|
| IB600        | 600 lb x 0.2 lb / 272 kg x 0.1 kg                   | 390 lb / 177 kg | 809161143706 |
| 0046-C247-08 | 6' / 1.8 m adult stretcher - Sure-Chek® 44XL fabric | 4 lb / 1.8 kg   | 809161143805 |
| 6800-1045    | AC Adapter  | 1 lb / 453 g    | 809161136203 |



Model  
DR400C



Model  
DR550C

## Digital Visiting Nurse Scale

Detecto's economical DR400C, with mild steel platform, and DR550C, with stainless steel platform, scales are lightweight and portable, making them perfect for mobile clinics and home care nurses. The units have slip-resistant mats to ensure patient safety when weighing.

| MODEL              | CAPACITY   | UPC          |
|--------------------|--|--------------|
| <b>DR400C</b>      | 400 lb x 0.5 lb /<br>(mild steel) 181 kg x 0.2 kg      | 809161143904 |
| <b>DR550C</b>      | 550 lb x 0.2 lb /<br>(stainless steel) 250 kg x 0.1 kg | 809161144000 |
| <b>DR400C-CASE</b> | carrying case  | 809161137200 |

**Display:** 4-digit, 7-segment, 1"/25mm high LCD

**Power:** 6 "AA" alkaline batteries or 115 volt AC adapter (included)

**Platform Size:** 12.2"W x 11.8"D x 1.97"H/31 cm W x 30 cm D x 5 cm H

**Shipping Weight:** 13 lb/6 kg

## Chiropractor Package - Bilateral Weight Scales

Detecto's MD250PKG Special Chiropractor Package comes with two model MD250 250 lb capacity scales and a 40"/1 m lock/release rod, giving you everything you need for efficient and portable bilateral weighing. The kit is perfect for chiropractor's offices to check if a patient's weight is evenly distributed.



| MODEL           | CAPACITY                | UPC          |
|-----------------|-------------------------|--------------|
| <b>MD250PKG</b> | 250 lb x 1 lb per scale | 809161144109 |

**Platform Size:** 13"W x 10.5"D/33 cm W x 27 cm D

**Shipping Weight:** 21 lb/10 kg

## Personal Floor Scales

The precision movement of this sturdy low-profile scale with circular display guarantees exact results and the design with a lot of white and chrome gives the scale a fresh, timeless look. The powder-coated steel casing is built to last a lifetime. The spacious tread area on the 10.6"W x 10.6"D (269 mm W x 269 mm D) weighing platform is covered in easy-to-clean, black synthetic material for fast wipe-downs. The modern, elegant scale design makes a positive impression in any room.



| MODEL        | CAPACITY                      | SHIP WEIGHT  | UPC          |
|--------------|-------------------------------|--------------|--------------|
| <b>D350</b>  | 350 lb x 1 lb / 160 kg x 1 kg | 17 lb / 8 kg | 809161144208 |
| <b>D350K</b> | 160 kg x 1 kg                 | Same         | 809161144307 |

**Dimensions:** 13.25"W x 20.25"D x 4.5"H/34 cm W x 51 cm D x 11 cm H

## Personal Floor Scales

A low profile design, heavy-duty construction and a non-skid vinyl mat are just a few features of the D1130 and D1130K scales - proven performers for budget-minded customers. They feature a white, baked-enamel finish and personal colorful indicators to mark one person's or a whole family's weights. The 7-inch (178 mm) diameter dial allows for easy readability even for tall people.



| MODEL         | CAPACITY       | SHIP WEIGHT | UPC          |
|---------------|----------------|-------------|--------------|
| <b>D1130</b>  | 300 lb x 1 lb  | 9 lb / 4 kg | 809161144406 |
| <b>D1130K</b> | 140 kg x 500 g | Same        | 809161144505 |

**Dimensions:** 12"W x 16.75"D x 2.5"H/31 cm W x 43 cm D x 6 cm H

## Digital Handgrip Dynamometers

Detecto's model DHS digital handgrip dynamometers provide rehabilitation exercise solutions for patients and physicians. The DHS allows medical professionals to evaluate the recovery condition of a patient's impaired hand. The data may be used for reference to view rehabilitation progress. The soft, padded handgrip and poly enclosure provide a comfortable material for patient usage.

Everything needed for hand evaluation is included in one convenient package: DHS handgrip dynamometer, instruction manual, and battery. Comes in convenient shockproof carrying/storage case with individual storage compartments for each item (shown to the right).



Model DHS-88

| MODEL   | CAPACITY                         | UPC          |
|---------|----------------------------------|--------------|
| DHS-88  | 88 lb x 0.2 lb / 40 kg x 0.1 kg  | 809161147803 |
| DHS-176 | 176 lb x 0.2 lb / 80 kg x 0.1 kg | 809161147902 |

**Dimensions (including handles):** 2.165" W x 3.976" D x 8.346" H  
55 mm W x 101 mm D x 212 mm H

**Battery:** CR-2450 (1 included)

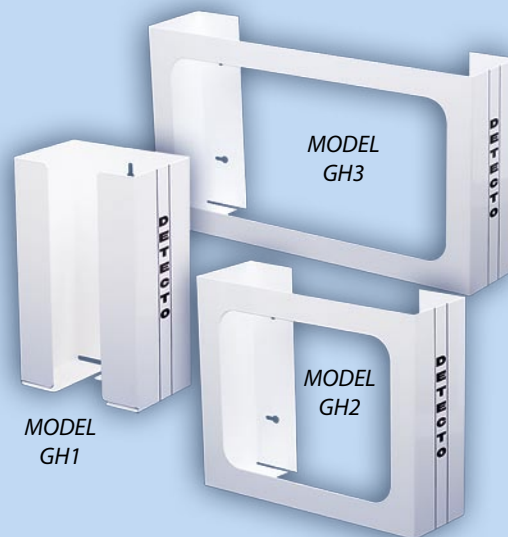
**Display:** 0.5"/13mm high 4-digit LCD

**Shipping Weight:** 2 lb/1 kg

## Mild Steel Glove Box Holders

Detecto's model GH Glove Box Holders are available in three different sizes. Fit one glove box in the small GH1, two boxes side by side in the GH2, and three boxes side by side in the GH3. The all-steel construction with white powder coat finish carries a Detecto lifetime guarantee. The units install in seconds via screwholes and the GH1 also features a snap-on clip in back. The open design allows you to see what size or type of glove is being dispensed.

| MODEL                       | DIMENSIONS  | UPC          |
|-----------------------------|---|--------------|
| <b>GH1</b><br>Holds 1 Box   | 10.5" H x 6.5" W x 4.25" D /<br>27 cm H x 17 cm W x 11 cm D | 809161144901 |
| <b>GH2</b><br>Holds 2 Boxes | 10" H x 12" W x 4" D /<br>25 cm H x 30 cm W x 10 cm D       | 809161145007 |
| <b>GH3</b><br>Holds 3 Boxes | 10" H x 18" W x 4" D /<br>25 cm H x 46 cm W x 10 cm D       | 809161145106 |



## Stainless Steel Glove Box Holders

Detecto's GHSS Stainless Steel Glove Box Holders are designed for holding latex glove boxes or tissues. Fit one glove box in the small GH1, two boxes side by side in the GH2, and three boxes side by side in the GH3. The all-stainless steel construction carries a Detecto lifetime guarantee. The units install in seconds via screwholes and the GH1 also features a snap-on clip in back. The open design allows you to see what size or type of glove is being dispensed.

| MODEL                         | DIMENSIONS  | UPC          |
|-------------------------------|---|--------------|
| <b>GH1SS</b><br>Holds 1 Box   | 10.5" H x 6.5" W x 4.25" D /<br>27 cm H x 17 cm W x 11 cm D | 809161144604 |
| <b>GH2SS</b><br>Holds 2 Boxes | 10" H x 12" W x 4" D /<br>25 cm H x 30 cm W x 10 cm D       | 809161144703 |
| <b>GH3SS</b><br>Holds 3 Boxes | 10" H x 18" W x 4" D /<br>25 cm H x 46 cm W x 10 cm D       | 809161144802 |



# WASTE RECEPTACLES

**Easy to Clean and Featuring Unitized Construction**



- **FREE Bio-Hazard and Infectious Waste Adhesive Labels (Meets OSHA Labeling Requirements)**
- **Bag Securing Mechanism on Wall Mount Hanging Models**



*Featuring a self-closing lid which also lifts off easily to remove the disposable bag*



*Lift bail mechanism and drop in bag.*



*Fold top of bag over edges of bail to secure.*



*Press bail mechanism back into place.*



**CLEAN UP IS EASY**

Not only do the stainless steel and epoxy polyester finishes on Detecto's waste receptacles allow for quick, wipe-down cleaning, the H models can be permanently positioned just off the ground for easy sweeping and mopping underneath and keeping debris from collecting around the base. Mounting brackets come with all the H models. To remove them from the wall, simply slide them up and out of their groove.

**Self-Closing Lids on Wall Mount Hanging Models**



Model H-60S

Model H-90

*Hemmed edges for safety*



Model SWC-48

Model SWC-64

Model SWC-32

**Wall Mount Hanging Waste Receptacles**

| MODEL                           | CAPACITY                  | DIMENSIONS  | UPC          |
|---------------------------------|---------------------------|---|--------------|
| <b>H-60S</b><br>Stainless Steel | 60 quart<br>(15 gallon)   | 33" H x 18.25" W x 7" D /<br>84 cm H x 46 cm W x 17 cm D    | 809161145205 |
| <b>H-60</b><br>White Epoxy      | 60 quart<br>(15 gallon)   | 33" H x 18.25" W x 7" D /<br>84 cm H x 46 cm W x 17 cm D    | 809161145304 |
| <b>H-90S</b><br>Stainless Steel | 90 quart<br>(22.5 gallon) | 37.25" H x 18" W x 9.25" D /<br>95 cm H x 46 cm W x 23 cm D | 809161145403 |
| <b>H-90</b><br>White Epoxy      | 90 quart<br>(22.5 gallon) | 37.25" H x 18" W x 9.25" D /<br>95 cm H x 46 cm W x 23 cm D | 809161145502 |

**Shipping Weights:** H-60/H-60S - 22.5 lb / 10 kg  
H-90/H-90S - 29.25 lb / 13 kg

**Standard Stainless Steel Waste Receptacles**

| MODEL                            | CAPACITY                | DIMENSIONS  | UPC          |
|----------------------------------|-------------------------|---|--------------|
| <b>SWC-32</b><br>Stainless Steel | 32 quart<br>(8 gallon)  | 20.75" H x 10" W x 10" D /<br>53 cm H x 25 cm W x 25 cm D     | 809161145601 |
| <b>SWC-48</b><br>Stainless Steel | 48 quart<br>(12 gallon) | 23.25" H x 11.5" W x 11.5" D /<br>59 cm H x 29 cm W x 29 cm D | 809161145700 |
| <b>SWC-64</b><br>Stainless Steel | 64 quart<br>(16 gallon) | 24" H x 17" W x 10" D /<br>61 cm H x 43 cm W x 24 cm D        | 809161145809 |

**Shipping Weights:** SWC-32 - 11 lb / 5 kg  
SWC-48 - 13 lb / 5.9 kg  
SWC-64 - 16 lb / 7.3 kg

## Detecto Step-On Can Waste Receptacles

Named for their rugged toughness, Detecto Step-On Cans are perfect for hospitals, doctors' offices, patients' rooms, and laboratory settings. They come in a variety of five different sizes and capacities and two different materials listed below. The cans are flame retardant, have a self-closing lid for sanitation, epoxy polyester or stainless steel finish for easy cleaning, and full width hinges and unitized construction for long-term use. Detecto also includes free bio-hazard and infectious waste adhesive labels to meet OSHA labelling requirements.



Model  
P-24



Model  
P-24R



Model  
C-24

## Baked Epoxy Steel Step-On Cans

| MODEL                          | CAPACITY                 | DIMENSIONS   | SHIPPING WEIGHT  | UPC          |
|--------------------------------|--------------------------|--|------------------|--------------|
| <b>P-16</b><br><i>(white)</i>  | 16 quart<br>(4 gallon)   | 13" H x 11.33" W x 12.625" D /<br>33 cm H x 29 cm W x 32 cm D    | 12 lb /<br>5 kg  | 809161117608 |
| <b>P-24</b><br><i>(white)</i>  | 24 quart<br>(6 gallon)   | 16" H x 11.33" W x 12.625" D /<br>41 cm H x 29 cm W x 32 cm D    | 14 lb /<br>6 kg  | 809161117707 |
| <b>P-32</b><br><i>(white)</i>  | 32 quart<br>(8 gallon)   | 21" H x 11.33" W x 12.625" D /<br>53 cm H x 29 cm W x 32 cm D    | 16 lb /<br>7 kg  | 809161117806 |
| <b>P-48</b><br><i>(white)</i>  | 48 quart<br>(12 gallon)  | 23.5" H x 13.188" W x 14 " D /<br>60 cm H x 33 cm W x 36 cm D    | 20 lb /<br>9 kg  | 809161117905 |
| <b>P-100</b><br><i>(white)</i> | 100 quart<br>(25 gallon) | 27.5" H x 16.813" W x 17.625" D /<br>70 cm H x 43 cm W x 45 cm D | 31 lb /<br>14 kg | 809161118001 |
| <b>P-16R</b><br><i>(red)</i>   | 16 quart<br>(4 gallon)   | 13" H x 11.33" W x 12.625" D /<br>33 cm H x 29 cm W x 32 cm D    | 12 lb /<br>5 kg  | 809161125900 |
| <b>P-24R</b><br><i>(red)</i>   | 24 quart<br>(6 gallon)   | 16" H x 11.33" W x 12.625" D /<br>41 cm H x 29 cm W x 32 cm D    | 14 lb /<br>6 kg  | 809161126006 |
| <b>P-32R</b><br><i>(red)</i>   | 32 quart<br>(8 gallon)   | 21" H x 11.33" W x 12.625" D /<br>53 cm H x 29 cm W x 32 cm D    | 16 lb /<br>7 kg  | 809161126105 |
| <b>P-48R</b><br><i>(red)</i>   | 48 quart<br>(12 gallon)  | 23.5" H x 13.188" W x 14 " D /<br>60 cm H x 33 cm W x 36 cm D    | 20 lb /<br>9 kg  | 809161126204 |
| <b>P-100R</b><br><i>(red)</i>  | 100 quart<br>(25 gallon) | 27.5" H x 16.813" W x 17.625" D /<br>70 cm H x 43 cm W x 45 cm D | 31 lb /<br>14 kg | 809161126303 |

## Stainless Steel Step-On Cans

| MODEL        | CAPACITY                 | DIMENSIONS   | SHIPPING WEIGHT  | UPC          |
|--------------|--------------------------|--|------------------|--------------|
| <b>C-16</b>  | 16 quart<br>(4 gallon)   | 13" H x 11.33" W x 12.625" D /<br>33 cm H x 29 cm W x 32 cm D    | 12 lb /<br>5 kg  | 809161118209 |
| <b>C-24</b>  | 24 quart<br>(6 gallon)   | 16" H x 11.33" W x 12.625" D /<br>41 cm H x 29 cm W x 32 cm D    | 14 lb /<br>6 kg  | 809161118308 |
| <b>C-32</b>  | 32 quart<br>(8 gallon)   | 21" H x 11.33" W x 12.625" D /<br>53 cm H x 29 cm W x 32 cm D    | 16 lb /<br>7 kg  | 809161118407 |
| <b>C-48</b>  | 48 quart<br>(12 gallon)  | 23.5" H x 13.188" W x 14 " D /<br>60 cm H x 33 cm W x 36 cm D    | 20 lb /<br>9 kg  | 809161118506 |
| <b>C-100</b> | 100 quart<br>(25 gallon) | 27.5" H x 16.813" W x 17.625" D /<br>70 cm H x 43 cm W x 45 cm D | 31 lb /<br>14 kg | 809161118605 |

## Plastic Liners

| MODEL        | CAPACITY            | SHIPPING WEIGHT  | UPC          |
|--------------|---------------------|------------------|--------------|
| <b>PL-16</b> | 16 quart (4 gallon) | 2.75 lb / 1.2 kg | 809161118704 |
| <b>PL-24</b> | 24 quart (6 gallon) | 3.5 lb / 1.6 kg  | 809161118803 |
| <b>PL-32</b> | 32 quart (8 gallon) | 4.5 lb / 2 kg    | 809161118902 |

Easy to clean plastic liners are ideal for use where disposable bags are not desired. (Model PL-32 Pictured)





Model PT-5R

Model PT-500RK

### Petite Top-Loading Portion Scales

Whatever your need in a top-loading dial scale, Detecto has a model to handle the job. The PT Series comes in a variety of capacities listed below. Sturdy construction, stability, convenient viewing angle, temperature compensation for dependable accuracy in environments with fluctuating temperatures and easy readability make these the petite top loaders of choice.



Some popular PT models are NSF certified.

NSF Certified



Model PT-25R

| MODEL        | CAPACITY         | DIAL     | FINISH          | UPC          |
|--------------|------------------|----------|-----------------|--------------|
| PT-1         | 16 oz x 0.25 oz  | Fixed    | Enamel          | 809161104608 |
| PT-2         | 32 oz x 0.25 oz  | Fixed    | Enamel          | 809161104707 |
| PT-2R (NSF)  | 32 oz x 0.25 oz  | Rotating | Enamel          | 809161105001 |
| PT-2-SR      | 32 oz x 0.25 oz  | Rotating | Stainless steel | 809161105100 |
| PT-500RK     | 500 g x 2 g      | Rotating | Enamel          | 809161105407 |
| PT-500SRK    | 500 g x 2 g      | Rotating | Stainless steel | 509161105506 |
| PT-5R (NSF)  | 5 lb x 0.5 oz    | Rotating | Enamel          | 809161105209 |
| PT-25R (NSF) | 25 lb x 0.125 lb | Rotating | Enamel          | 809161105308 |

**Overall Size:** 6.125" W x 7.25" D x 7.25" H / 16 cm W x 18 cm D x 18 cm H

**Dial Size:** 6" / 15 cm diameter

**Platform:** 5.75" (15 cm) square stainless steel. PT-25R: 7.9" W x 5.9" D / 20 cm W x 15 cm D

**Shipping Weight:** 5 lb / 2 kg

### Dual-Reading Lbs/Kgs Top Loading Portion Scales

This dual-reading top loader series comes in a variety of capacities listed below which show simultaneous readings of pounds and kilograms. An easy-to-clean enamel finish, sturdy construction, stability, convenient viewing angle, and easy readability make these attractive top loaders an ideal choice for your weighing needs.



Model T1KP

| MODEL | CAPACITY                      | DIAL  | FINISH | UPC          |
|-------|-------------------------------|-------|--------|--------------|
| T1KP  | 2.2 lb x 0.25 oz / 1 kg x 5 g | Fixed | Enamel | 809161121308 |
| T2KP  | 4.3 lb x 0.5 oz / 2 kg x 10 g | Fixed | Enamel | 809161108705 |

Add letter "D" to model for optional air dashpot

**Overall Size:** 10.5" H x 8.5" W x 10.25" D / 27 cm H x 22 cm W x 26 cm D

**Dial:** 8" / 20 cm diameter fixed

**Platform:** 9" / 23 cm square stainless steel

**Shipping Weight:** 10 lb / 4.5 kg

**Additional Capacities Available**

## Digital Portion Control Scales



AC or battery power



| MODEL | CAPACITY                         | SHIPPING WEIGHT | UPC          |
|-------|----------------------------------|-----------------|--------------|
| PS-4  | 4 lb x 0.1 oz /<br>2,000 g x 1 g | 4 lb / 1.8 kg   | 809161145908 |

**Display:** 0.8"/20 mm high LCD  
**Overall Size:** 1.5"H x 5.9"W x 6.7"D/4 cm H x 15 cm W x 17 cm D  
**Platform Size:** 5.9"W x 4.75"D/15 cm W x 12 cm D



AC or battery power

| MODEL | CAPACITY                          | SHIPPING WEIGHT | UPC          |
|-------|-----------------------------------|-----------------|--------------|
| PS-5A | 70 oz x 0.1 oz /<br>1,998 g x 2 g | 4 lb / 1.8 kg   | 809161101102 |

**Display:** 0.5"/13 mm high LCD  
**Overall Size:** 2.75"H x 7"W x 7"D/7 cm H x 18 cm W x 18 cm D  
**Platform Size:** 6.75"W x 5.25"D/17 cm W x 13 cm D



AC or battery power

| MODEL | CAPACITY        | SHIPPING WEIGHT | UPC          |
|-------|-----------------|-----------------|--------------|
| PS-6A | 70 oz x 0.25 oz | 4 lb / 1.8 kg   | 809161101300 |

**Display:** 0.5"/13 mm high LCD  
**Overall Size:** 2.75"H x 7"W x 7"D/7 cm H x 18 cm W x 18 cm D  
**Platform Size:** 6.75"W x 5.25"D/17 cm W x 13 cm D



AC or battery power



| MODEL | CAPACITY   | SHIPPING WEIGHT | UPC          |
|-------|--|-----------------|--------------|
| PS-7  | 7 lb x 0.1 oz /<br>112 oz x 0.1 oz /<br>112 oz x 1/8 oz /<br>3000 g x 1 g /<br>7 lb x 0.005 lb | 4 lb / 1.8 kg   | 809161146004 |

*Features the ability to disable different units of measure.*



**Display:** 5-digit, 0.8" x 0.3" characters with fractions LCD  
**Overall Size:** 2.44"H x 8.03"W x 7.87"D / 6 cm H x 20 cm W x 20 cm D  
**Platform Size:** 8.02"W x 4.96"D / 20 cm W x 13 cm D



AC power or built-in rechargeable battery



| MODEL | CAPACITY   | SHIPPING WEIGHT | UPC          |
|-------|--|-----------------|--------------|
| PS-11 | 11 lb x 0.1 oz /<br>176 oz x 0.1 oz /<br>176 oz x 1/4 oz /<br>5000 g x 2 g /<br>11 lb x 0.005 lb | 6 lb / 2.7 kg   | 809161146103 |

*Features the ability to disable different units of measure.*



**Display:** 5-digit, 0.8" x 0.3" characters with fractions LCD  
**Overall Size:** 2.3"H x 7.25"W x 9.5"D / 6 cm H x 18 cm W x 24 cm D  
**Platform Size:** 6.89"W x 6.5"D / 18 cm W x 17 cm D



Notice of Approval  
AM-4539 Rev. 2



LEGAL FOR TRADE  
Cert. No.  
95-087A1

AC power

| MODEL | CAPACITY            | SHIPPING WEIGHT | UPC          |
|-------|---------------------|-----------------|--------------|
| AP-6  | 99.95 oz x 0.05 oz  | 5 lb / 2.3 kg   | 809161101904 |
| AP-8  | 7.998 lb x 0.002 lb | 5 lb / 2.3 kg   | 809161102000 |
| AP-10 | 9.995 lb x 0.005 lb | 5 lb / 2.3 kg   | 809161102109 |
| AP-20 | 19.99 lb x 0.01 lb  | 5 lb / 2.3 kg   | 809161102208 |
| AP-4K | 3999 g x 1 g        | 5 lb / 2.3 kg   | 809161101805 |

**Display:** 0.5"/13 mm high LED  
**Overall Size:** 2.75"H x 7.5"W x 7"D/7 cm H x 19 cm W x 18 cm D  
**Platform Size:** 6.75"W x 5.25"D/17 cm W x 13 cm D



Optional Commodity Scoop - Model 285R31

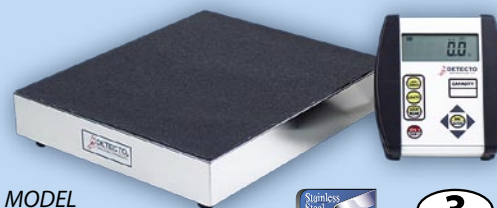
## Scales for Veterinarians, Pet Stores, Kennels or Laboratories

### Medium Capacity Digital Vet Scale

This portable, compact-sized scale with a remote weight display is the ideal scale for small animals. Its scale base can be positioned up to 8 feet away from the display. The scale's medium base size allows it to be used on the floor or tabletop and its light weight makes it ultra portable. The VET50 comes with the rubber mat pictured to the right.

**Dimensions:** 3" H x 14" W x 12" D / 8 cm H x 36 cm W x 30 cm D

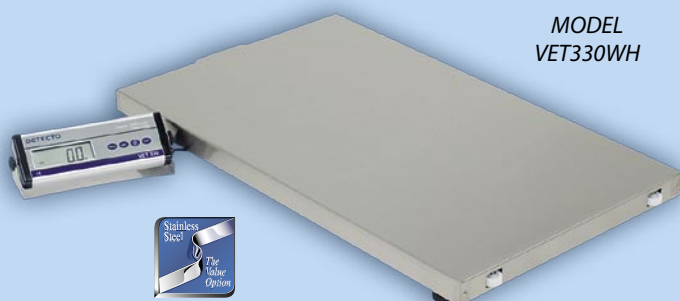
**750** Please see page 10 for additional weight display features.



MODEL  
VET50



| MODEL     | CAPACITY / DESCRIPTION            | SHIPPING WEIGHT | UPC          |
|-----------|-----------------------------------|-----------------|--------------|
| VET50     | 50 lb x 0.02 lb / 20 kg x 0.01 kg | 15 lb / 7 kg    | 809161146202 |
| 6800-1045 | AC Adapter                        | 1 lb / 453 g    | 809161136203 |



MODEL  
VET330WH

### Digital Vet Scale with Wheels and Handle

This economical, portable scale with a remote weight display is the ideal scale for medium to large size animals. The VET330WH features rechargeable battery power and comes with an AC adapter. The scale's light weight combined with wheels and carrying handle make it ultra portable to allow the weighing to come to the patient.

**Dimensions:** 36" W x 22" D / 91 cm W x 56 cm L

| MODEL    | CAPACITY                          | SHIPPING WEIGHT | UPC          |
|----------|-----------------------------------|-----------------|--------------|
| VET330WH | 330 lb x 0.2 lb / 150 kg x 0.1 kg | 50 lb / 23 kg   | 809161146301 |

### High Capacity Digital Vet Scale

The VET400 is the perfect scale for anyone handling medium to large size animals. The large, low-profile platform makes it easy for animals to step onto the floor scale without any hesitancy, and an optional rubber mat is also available. The removable stainless steel platform makes cleanup fast and easy. Its scale base can be positioned up to 8'/2.5m away from the display due to the coiled cable. The indicator features an adjustable mounting bracket for either desk or wall mount convenience. The Lock/Release feature retains the displayed weight after the animal is removed.

**Dimensions:** 1.75" H x 42" W x 22" D / 44 cm H x 107 cm W x 56 cm D

**750** Please see page 10 for additional weight display features.



MODEL  
VET400



| MODEL     | CAPACITY / DESCRIPTION            | SHIPPING WEIGHT | UPC          |
|-----------|-----------------------------------|-----------------|--------------|
| VET400    | 400 lb x 0.2 lb / 200 kg x 0.1 kg | 76 lb / 34 kg   | 809161146400 |
| VET-MAT   | Rubber Mat                        | 1 lb / 453 g    | 809161146509 |
| 6800-1045 | AC Adapter                        | 1 lb / 453 g    | 809161136203 |



# LAUNDRY SCALES



Laundry scales come in all shapes and sizes depending on your specific application. Whether you are weighing small baskets or large carts, Detecto has a scale to meet your needs. Detecto's selections of scales are well suited for use in homes, hospitals, commercial applications or hotels. Whether you are charging for laundry by weight or just preventing overloading your home or commercial washer/dryer, Detecto has the weighing solution. Weight printing is also vital for commercial applications, and Detecto can provide the best scale for your operation.

In commercial applications, a "legal for trade" scale may be required. "Legal for trade" scales are those that the Department of Weights and Measures has approved to sell a service or product based on the weight displayed by the scale. Additionally, for laundry cart weighing, Detecto has several scales with ramps that make it easy to move the cart on and off the scale.

*Model FHD-133-II Laundry Cart Scale Shown with Detecto P220 Label Printer and Model 204 Digital Weight Indicator.*



## Laundry Scales

Detecto offers a large variety of industrial-strength laundry scales.



### SMALL BASKET SCALES

Battery Power



DR150 Digital 150 lb Scale

10.5" Dial



T200 Mechanical 200 lb Scale

### LARGE BASKET SCALES

22" x 42" Deck



VET400 Digital 400 lb Scale

Double Lip Pan



48100-36 Mechanical 100 lb Scale

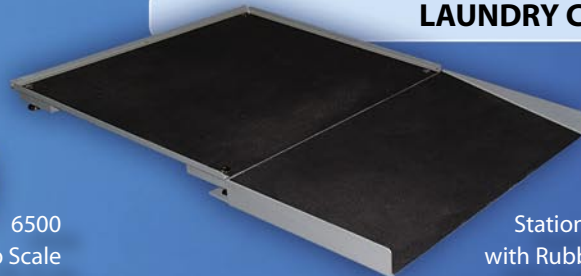
### LAUNDRY CART SCALES

Integral Ramp



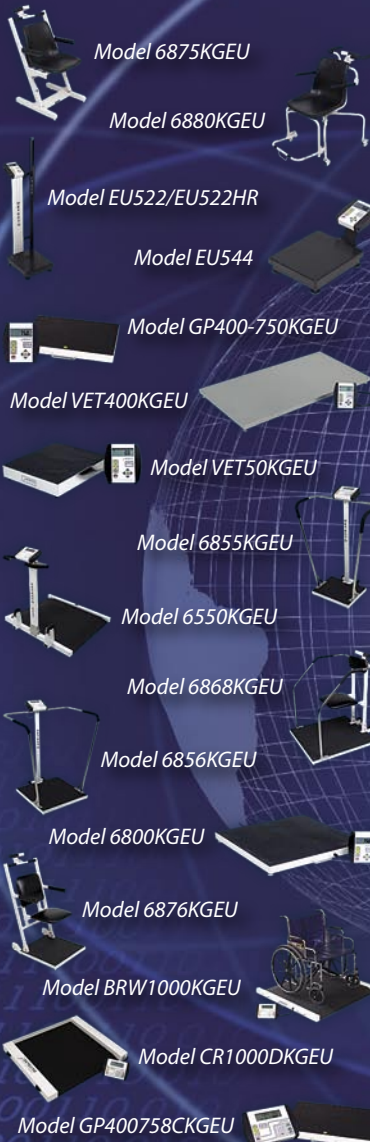
6500 Portable 800 lb Scale

36" x 36" Deck



FHD-133-II Stationary 1,000 lb Scale with Rubberized Mat Ramp

## Health Care Scales Around the Globe



## Detecto is Your WORLDWIDE SCALE PROVIDER

### Waist-High Digital Physician Scale - European-Only Models

Detecto's EU522 and EU544 are designed for use in European countries. These high-quality digital physician scales are light, but durable. The scales feature "at-a-glance" convenience of a digital weight display and a slip-resistant base cover. The waist-high model is also available with a 76 cm to 198 cm height rod - model EU522HR.

| MODEL   | CAPACITY        | SCALE HEIGHT | HEIGHT ROD<br>76 - 198 cm | UPC          |
|---------|-----------------|--------------|---------------------------|--------------|
| EU522   | 200 kg x 0.1 kg | 95 cm        |                           | 809161146608 |
| EU522HR | 200 kg x 0.1 kg | 95 cm        | •                         | 809161146707 |
| EU544   | 200 kg x 0.1 kg | 9 cm         |                           | 809161146806 |



Model  
EU544

**Platform Size:** 26 cm x 34 cm  
**Power Source:** 6 "AA" size batteries or optional AC adapter

**750**

Please see page 10 for additional  
weight display features.



Model  
EU522HR

## MODEL

|              |            |              |            |           |            |
|--------------|------------|--------------|------------|-----------|------------|
| 0046-C007-08 | Page 25    | 8430S        | Page 9     | P-24      | Page 29    |
| 0046-C065-08 | Page 25    | 8432-CH      | Page 20    | P-24R     | Page 29    |
| 0046-C247-08 | Page 25    | 8435         | Page 21    | P-32      | Page 29    |
| 11S400H      | Page 24    | 8435KG       | Page 21    | P-32R     | Page 29    |
| 204          | Page 33    | 8437         | Page 9     | P-48      | Page 29    |
| 204FWMP      | Page 19    | 8437S        | Page 9     | P-48R     | Page 29    |
| 2371         | Page 5     | 8440         | Page 21    | PD100     | Page 6     |
| 2371S        | Page 5     | 8440-CASE    | Page 21    | PD200     | Page 6     |
| 2381         | Page 5     | 8450         | Page 21    | PD300     | Page 6     |
| 2391         | Page 5     | 8450-CASE    | Page 21    | PD300DHR  | Page 6     |
| 2391S        | Page 5     | AP-6         | Page 31    | PD300MHR  | Page 6     |
| 243          | Page 22    | AP-8         | Page 31    | PL-16     | Page 29    |
| 2431         | Page 22    | AP-10        | Page 31    | PL-24     | Page 29    |
| 2441         | Page 22    | AP-20        | Page 31    | PL-32     | Page 29    |
| 2491         | Page 5     | AP-4K        | Page 31    | PL400     | Page 24    |
| 253          | Page 22    | AP-4KD       | Page 23    | PL600     | Page 24    |
| 2531         | Page 22    | BRW1000      | Page 16    | PL-HLKIT  | Page 24    |
| 285R31       | Page 31    | C-16         | Page 29    | PL-ICKIT  | Page 24    |
| 337          | Page 5     | C-24         | Page 29    | PS-4      | Page 31    |
| 337S         | Page 5     | C-16         | Page 29    | PS5A-2KD  | Page 23    |
| 338          | Page 5     | C-32         | Page 29    | PS-5A     | Page 31    |
| 339          | Page 5     | C-48         | Page 29    | PS-6A     | Page 31    |
| 339S         | Page 5     | C-100        | Page 29    | PS-7      | Page 31    |
| 349          | Page 5     | CR-500D      | Page 18    | PS-11     | Page 31    |
| 3PHNDPST     | Page 5     | CR-1000D     | Page 18    | PT-1      | Page 30    |
| 3PHTROD-1    | Page 5     | D1130        | Page 26    | PT-2      | Page 30    |
| 3PHTROD-WM   | Page 5,12  | D1130KG      | Page 26    | PT-25R    | Page 30    |
| 3PRAMP       | Page 15    | D350         | Page 26    | PT-2R     | Page 30    |
| 3PWHL        | Page 5     | D350K        | Page 26    | PT-2-SR   | Page 30    |
| 437          | Page 5     | DHR          | Page 6     | PT-500RK  | Page 30    |
| 437S         | Page 5     | DHRWM        | Page 7     | PT-500SRK | Page 30    |
| 438          | Page 5     | DHS-88       | Page 27    | PT-5R     | Page 30    |
| 439          | Page 5     | DHS-176      | Page 27    | SPBT-1728 | Page 20    |
| 439S         | Page 5     | DIS-2        | Page 16    | SWC-32    | Page 28    |
| 442          | Page 5     | DR150        | Page 33    | SWC-48    | Page 28    |
| 448          | Page 5     | DR400-750    | Page 11    | SWC-64    | Page 28    |
| 449          | Page 5     | DR400C       | Page 26    | T1KP      | Page 30    |
| 450          | Page 23    | DR400C-CASE  | Page 11,26 | T200      | Page 33    |
| 451          | Page 23    | DR550C       | Page 26    | T2KP      | Page 30    |
| 459          | Page 23    | EU522        | Page 34    | T3530A    | Page 24    |
| 459-CH       | Page 22    | EU522HR      | Page 34    | VET330WH  | Page 32    |
| 475          | Page 14    | EU544        | Page 34    | VET50     | Page 32    |
| 4751         | Page 14    | FH-133-II/C  | Page 19    | VET400    | Page 32,33 |
| 48100-36     | Page 33    | FH-133-II/CH | Page 19    | VET-MAT   | Page 32    |
| 483          | Page 5     | FH-143-II/C  | Page 19    | WinDDE    | Page 8     |
| 485          | Page 15    | FH-143-II/CH | Page 19    |           |            |
| 4851         | Page 15    | FH-144-II/C  | Page 19    |           |            |
| 495          | Page 15    | FH-144-II/CH | Page 19    |           |            |
| 4951         | Page 15    | FH-164-II/C  | Page 19    |           |            |
| 4PHTROD-3    | Page 5     | FH-164-II/CH | Page 19    |           |            |
| 6027         | Page 11    | FHD-133-II   | Page 18,33 |           |            |
| 6027KG       | Page 11    | FHD-144-II   | Page 18    |           |            |
| 6029         | Page 11    | GH1          | Page 27    |           |            |
| 6029KG       | Page 11    | GH1SS        | Page 27    |           |            |
| 6437         | Page 9     | GH2          | Page 27    |           |            |
| 6439         | Page 9     | GH2SS        | Page 27    |           |            |
| 6449         | Page 9     | GH3          | Page 27    |           |            |
| 6475         | Page 14    | GH3SS        | Page 27    |           |            |
| 6475K        | Page 14    | GP-400-750   | Page 11    |           |            |
| 6495         | Page 15    | GP-400-758C  | Page 9     |           |            |
| 6500         | Page 16,33 | H-60         | Page 28    |           |            |
| 6550         | Page 17    | H-60S        | Page 28    |           |            |
| 6745         | Page 20    | H-90         | Page 28    |           |            |
| 6800         | Page 12    | H-90S        | Page 28    |           |            |
| 6800-1006    | Page 20    | IB400        | Page 25    |           |            |
| 6800-1037    | Page 21    | IB600        | Page 25    |           |            |
| 6800-1039    | Page 21    | MCS25KGN     | Page 22    |           |            |
| 6800-1045    | Page 9     | MCS25KGNT    | Page 22    |           |            |
| 6855         | Page 12    | MD250PKG     | Page 26    |           |            |
| 6856         | Page 12    | MHR          | Page 6     |           |            |
| 6868         | Page 13    | P-100        | Page 29    |           |            |
| 6875         | Page 14    | P-100R       | Page 29    |           |            |
| 6876         | Page 13    | P150         | Page 8     |           |            |
| 6880         | Page 14    | P-16         | Page 29    |           |            |
| 750          | Page 10    | P-16R        | Page 29    |           |            |
| 758C         | Page 8     | P185         | Page 8     |           |            |
| 8430         | Page 9     | P220         | Page 8,33  |           |            |

## PRODUCT CATEGORY

|                                    |  |         |
|------------------------------------|--|---------|
| <b>Acute Care</b>                  |  |         |
| 6439 Eye-Level Physician Scale     |  | Page 9  |
| 6550 Portable Wheelchair Scale     |  | Page 17 |
| 6745 Baby Scale                    |  | Page 20 |
| 6856 Bariatric Scale               |  | Page 12 |
| 6880 Rolling Chair Scale           |  | Page 14 |
| 8450 Baby Scale                    |  | Page 21 |
| IB400 In-Bed Scale                 |  | Page 25 |
| IB600 In-Bed Scale                 |  | Page 25 |
| P-32 Step-On Can                   |  | Page 29 |
| <b>Bariatric Care</b>              |  |         |
| 6500 Portable Wheelchair Scale     |  | Page 16 |
| 6550 Portable Wheelchair Scale     |  | Page 17 |
| 6855 Bariatric Scale               |  | Page 12 |
| 6856 Bariatric Scale               |  | Page 12 |
| 6800 Bariatric Scale               |  | Page 12 |
| 6868 Bariatric Scale               |  | Page 13 |
| 6876 Flip Seat Scale               |  | Page 13 |
| BRW1000 Bariatric Wheelchair Scale |  | Page 16 |
| CR-1000D Wheelchair Scale          |  | Page 18 |
| FHD-133-II Wheelchair Scale        |  | Page 18 |
| PD300DHR ProDoc™ Digital Scale     |  | Page 6  |
| <b>Home Health Care</b>            |  |         |
| 8440 Baby Scale                    |  | Page 21 |
| D1130 Personal Floor Scale         |  | Page 26 |
| D350 Personal Floor Scale          |  | Page 26 |
| DR400C Floor Scale                 |  | Page 26 |
| PD200 ProDoc™ Digital Scale        |  | Page 6  |
| <b>Long-Term Care</b>              |  |         |
| 6475 Chair Scale                   |  | Page 14 |
| 6550 Portable Wheelchair Scale     |  | Page 17 |
| 6876 Flip Seat Euro Scale          |  | Page 13 |
| BRW1000 Wheelchair Scale           |  | Page 16 |
| CR-1000D Wheelchair Scale          |  | Page 18 |
| IB600 In-Bed Scale                 |  | Page 25 |
| FHD-133-II Wheelchair Scale        |  | Page 18 |
| PD300DHR ProDoc™ Digital Scale     |  | Page 6  |
| <b>Physician Care</b>              |  |         |
| 439 Eye-Level Physician Scale      |  | Page 5  |
| 6439 Eye-Level Physician Scale     |  | Page 9  |
| CR-500D Wheelchair Scale           |  | Page 18 |
| DR400-750 Portable Floor Scale     |  | Page 11 |
| H-90S Wall-Mount Waste Receptacle  |  | Page 28 |
| P-24 Step-On Can                   |  | Page 29 |
| PD300DHR ProDoc™ Digital Scale     |  | Page 6  |
| <b>Surgical Care</b>               |  |         |
| 6855 Bariatric Scale               |  | Page 12 |
| 6856 Bariatric Scale               |  | Page 12 |
| 6868 Bariatric Scale               |  | Page 13 |
| AP-4KD Lap Sponge Scale            |  | Page 23 |
| P-24R Step-On Can                  |  | Page 29 |
| PS5-2KD Lap Sponge Scale           |  | Page 23 |
| PT-2R Dial Type Portion Scale      |  | Page 30 |
| <b>Veterinary Care</b>             |  |         |
| AP-4KD Digital Scale With Tray     |  | Page 23 |
| C Series Step-On Cans              |  | Page 29 |
| GH Glove Box Holders               |  | Page 27 |
| VET330WH Veterinary Scale          |  | Page 32 |
| VET400 Veterinary Scale            |  | Page 32 |
| VET50 Veterinary Scale             |  | Page 32 |
| <b>EU Class 3 Approved</b>         |  |         |
| 6550KGEU Portable Wheelchair Scale |  | Page 17 |
| 6855KGEU Bariatric Scale           |  | Page 12 |
| 6856KGEU Bariatric Scale           |  | Page 12 |
| 6868KGEU Bariatric Scale           |  | Page 13 |
| 6875KGEU Premier Chair Scale       |  | Page 14 |
| 6876KGEU Flip Seat Scale           |  | Page 13 |
| 6800KGEU Portable Bariatric Scale  |  | Page 12 |
| 6880KGEU Chair Scale               |  | Page 14 |
| BRW1000KGEU Wheelchair Scale       |  | Page 16 |
| CR-1000DKGEU Wheelchair Scale      |  | Page 18 |
| EU522/EU522HR Waist-High Scale     |  | Page 34 |
| EU544 Low-Profile Digital Scale    |  | Page 34 |
| GP-400-750KGEU Low-Profile Scale   |  | Page 11 |
| GP-400-758CKGEU Low-Profile Scale  |  | Page 9  |
| VET400KGEU Veterinary Scale        |  | Page 32 |
| VET50KGEU Veterinary Scale         |  | Page 32 |

## DETECTO ONLINE

Detecto's entire product line is available for viewing online on our Web site: [www.Detecto.com](http://www.Detecto.com). Detecto aims to provide our customers with the most up-to-date and comprehensive product information and resources available anytime on the Web.

Go to [www.Detecto.com](http://www.Detecto.com) for extensive Detecto product information, brochures, specification sheets, a physician scale model comparison chart, demonstration videos, ISO certification resources, company history, and "legal-for-trade" certifications; in addition to this catalog in PDF format, all just a click away.



## OUR MISSION STATEMENT

Detecto is dedicated to the design and manufacture of innovative quality products of exceptional value to a world market. These efforts are monitored and communicated throughout the organization, in order to bring forth continuous improvement and growth for the Detecto family and our customers.

*We will...promote an open environment encouraging creativity, team work, and total employee involvement.*

*We will...maintain a positive commitment to continual quality improvement essential for our customer's satisfaction.*

*We will...seek mutually beneficial long term relationships with our customers, distributors, suppliers, and community.*

*We will...adhere to sound business and environmental practices.*

*We will...strive to attract, develop, fairly reward, and provide secure employment for capable and committed employees.*

*We will...maintain a fair rate of return on investment to ensure the accomplishment of our mission.*

**SOLD BY:**

 **DETECTO**<sup>®</sup>  
A Division of Cardinal Scale Manufacturing Co.

203 E. Daugherty, Webb City, MO 64870 USA  
Ph: 417-673-4631 or 1-800-641-2008 Fax: 417-673-5001  
[www.Detecto.com](http://www.Detecto.com)