

# NEC Produktportfolio



E-band  
radio

iPASOLINK EX



Sub  
band  
Free

Compact ODU



2048  
QAM

iPASOLINK 400/400A

Fanless  
Half size  
IDU



iPASOLINK 100E



iPASOLINK 200



CWDM

iPASOLINK 1000



Integrated  
antenna

Small &  
Compact

iPASOLINK SX



Sub  
band  
Free

2048  
QAM

iPASOLINK iX



4 PoE  
(PSE)

IP67  
comply

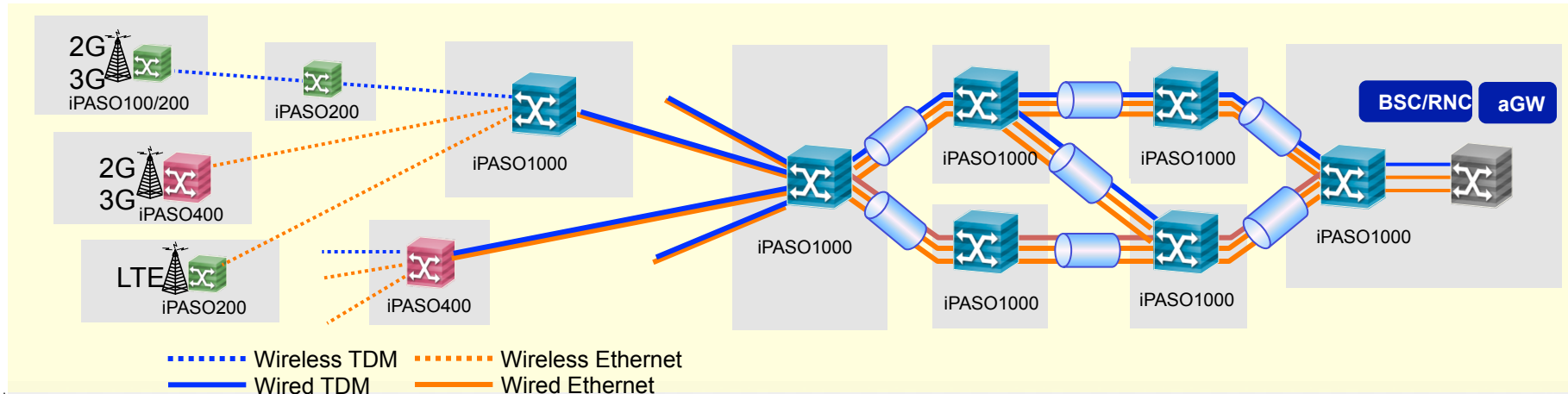
iPASOLINK GX

# Investitionssicherheit


## NEC iPASOLINK

- Carrier Class Equipment
- 5 Jahre Herstellergarantie
- optionaler Vorab-Austausch-Service durch Compart
- modular erweiterbare Hardware
- MEF (Metro Ethernet Forum) Zertifizierung (Carrier Ethernet)
- unterstützt gängige IEEE Standards
- VLAN Support, QoS, QinQ, MSTP, LAG mit LACP, Ethernet OAM
- Jumbo Frames

# Investitionssicherheit




**iPASOLINK 1000**



**12-way**

- ✓ 12-way Nodal
- ✓ Redundancy
- ✓ High Speed INTF
- ✓ SDH and All IP with CWDM


**iPASOLINK 400/400A**



**4-way**

- ✓ 4-way Nodal
- ✓ Redundancy
- ✓ Pay as grow architecture

**iPASOLINK 200**



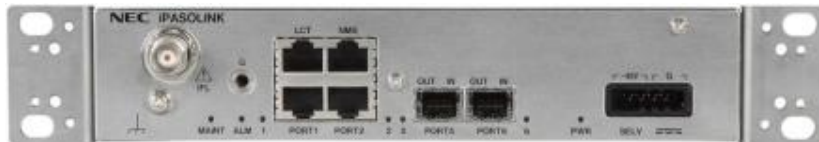
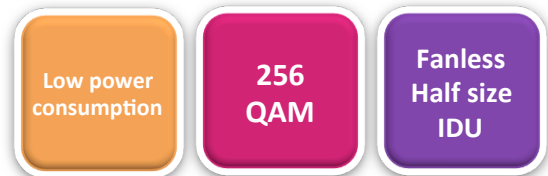
**2-way**

- ✓ Compact packet radio
- ✓ 2-way radio (iPASO200)
- ✓ Redundancy (iPASO200)

Domain →

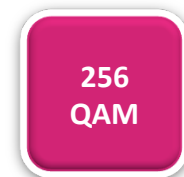
## iPASOLINK 100E

- Reduced IDU outline => half the size of iPASOLINK100/200/400
- Optimized access radio without TDM function for Packet transmission
- Carrier-grade L2 switch (up to 10Gbps switching capability)
- Full compatibility with iPASOLINK series
- Low Power consumption (IDU 25W <= 45W(iPASO200))
- Fan-less natural cooling
- Long life-span and high MTBF value
- Synchronous Ethernet and IEEE1588v2
- VLAN and QoS Support
- Ethernet OAM



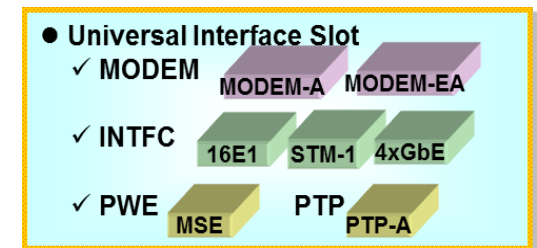
## NEC iPASOLINK 200

- 1U single board, all-in-one model
- 16xE1, 2xFE (or 4xGbE) and 2xGbE(SFP) ports
- 2 AMR Modems are equipped on single main board
- Configurable as 1+0, 1+1, 2+0 and 1+0 XPIC, by Software Key.
- Additional sub-board slots are available for 16E1, STM-1 or PWE
- SNCP TDM ring and LAG for Ethernet
- Full TDM to Full IP
- Built-in TDM Cross-Connect(152E1x152E1) and Power-full Packet Switch
- Enhanced system gain with new ODU(IAG / IAP)
- Ether OAM, Sync Ethernet



## iPASOLINK 400A

- High capacity with 2048-QAM MODEM
- Universal Interface Slots
- Easy upgrade by software key
- equipped with 6 GbE ports
- Low power consumption (67 W with 2 modems)
- for XPIC connection no xpic cable needed
- 16E1 card, 4xGE card, MSE card (for TDM PWE), STM-1 card
- Converged Node for Wireless/Optical
- Full TDM to Full IP
- Built in TDM Cross-Connect(168E1x168E1) and Power-full Packet Switch
- ETH OAM, Sync Ethernet



## NEC iPASOLINK 400

### iPASOLINK400 – Flexible Converged Node for tail or 4way Nodal

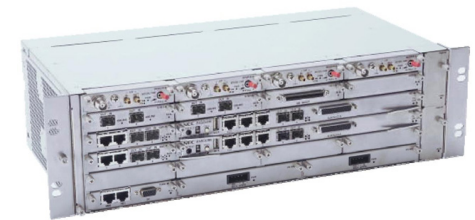
- 1U with main card and 4 universal slots model
- Main card with 16E1, 2xFE and 2 GbE (SFP).
- Flexible 2048 QAM AMR modem configuration, 1+0, 2 to 4+0, 2x (1+1), (1+0 XPIC) , 1x(1+1 XPIC), and modem-less optical node 2x
- Various Interface Card type
- 16E1 card, 4xGE card, MSE card (for TDM PWE), STM-1 card
- Converged Node for Wireless/Optical
- Full TDM to Full IP
- Built in TDM Cross-Connect(168E1x168E1) and Power-full Packet Switch
- ETH OAM, Sync Ethernet



2048  
QAM

## NEC iPASOLINK 1000

- 3U with 12 way Nodal Radio with 2048 QAM modems
- Redundant Main card (TDM/L2 Switch matrix with CPU)
- 10GbE, and CWDM Metro Network interface
- Metro Ethernet Upgradable (i.e. MPLS-TP)
- Multi way Nodal Radio
- Satisfy most Nodal Node requirements
- Full Compatible with iPASOLINK400 modems
- Intelligent Converged Node Gateway for High Speed Optical Metro Network for LTE
- Higher capacity optical network interface at Metro side
- Provides upgradable interoperability with Core Network
- Independent handling of Native traffic
- TDM with SNCP Ring
- Carrier Class L2 switching with Ether Ring and 10GbE for Packet Traffic
- Scalable SW capacity from Multi-way nodal to Metro Optical node





# iPASOLINK iX

## 6-42GHz band All-Outdoor Radio

- Sub band Free support on 6/7/13-23GHz with band free filter of NEC original technology
- Wide frequency band support for short-to-long transmission
- Flexible & High performance (QPSK to 2048QAM with hitless AMR)
- Interoperable split-type iPASOLINK series
- Space, time and cost saving with compact, lightweight and quick installation

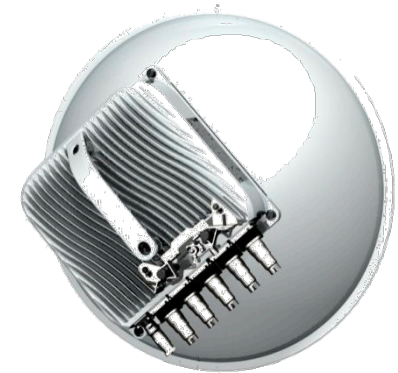


Features	Specifications
Frequency Range	6 to 42 GHz
Modulation	QPSK to 2048QAM
Maximum Link Capacity	1 Gbps
Interface (2Ports)	GbE OPT and ELE
Dimension & Weight	250(W)x250(H)x120(D) 6kg

## iPASOLINK EX

### 70-80GHz band ultra high capacity all-outdoor radio

- Ultra high capacity transmission
- Lower spectrum license cost compared to traditional microwave radio
- Compact, lightweight and quick installation
- Wide range use cases  
( last mile, aggregation, alternative line for fiber, etc.)
- Successful with iPASOLINK EX to an increasing number of equipment tenders



Antenna  
Direct  
Mount

Over  
1.6  
Gbps

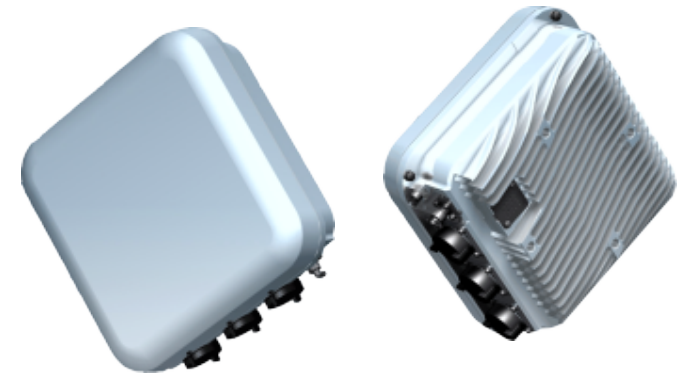
Powerful  
L2SW

Features	Specifications
Frequency Range	71-86 GHz
Modulation	QPSK to 256 QAM
Maximum Link Capacity	1600 Mbps (256QAM)
Interface (3Ports)	GbE OPT and ELE
Dimension & Weight	270(W)x270(H)x100(D) 5.5kg

# iPASOLINK SX

## 60GHz short-range transmission all-outdoor radio

- All-in-one integrated antenna MW radio  
(Packet Base-Band + FDD RF Part + Antenna)
- Easy extension of last mile  
(available free channel automatically search)
- Very compact, lightweight and adaptable as street furniture
- High frequency reusability
- Suitable for small cell backhaul
- 320 Mbps/400m, 82Mbps/900m (zone K, 99.99%)



Features	Specifications
Frequency	59 to 63GHz
Modulation	QPSK to 256QAM
Maximum link capacity	320Mbps
Interface	2 Ports (GbE OPT and ELE)
Power Consumption	20 W (typical)
Dimension / Weight	230(D)x230(H)x104(D) 3Kg

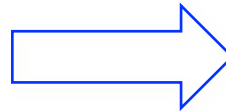
# IHG and IAG ODU

## IHG ODU

13 – 42 GHz



2 litre  
2.5 kg



**Volume 50% OFF**  
**Weight 50% OFF**

## IAG ODU

1 litre  
1.2 kg

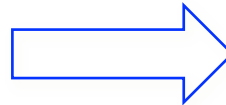


Palm size

6 – 11 GHz



3.5 litre  
3.5 kg



2 litre  
3 kg



# IHG and IAG ODU

