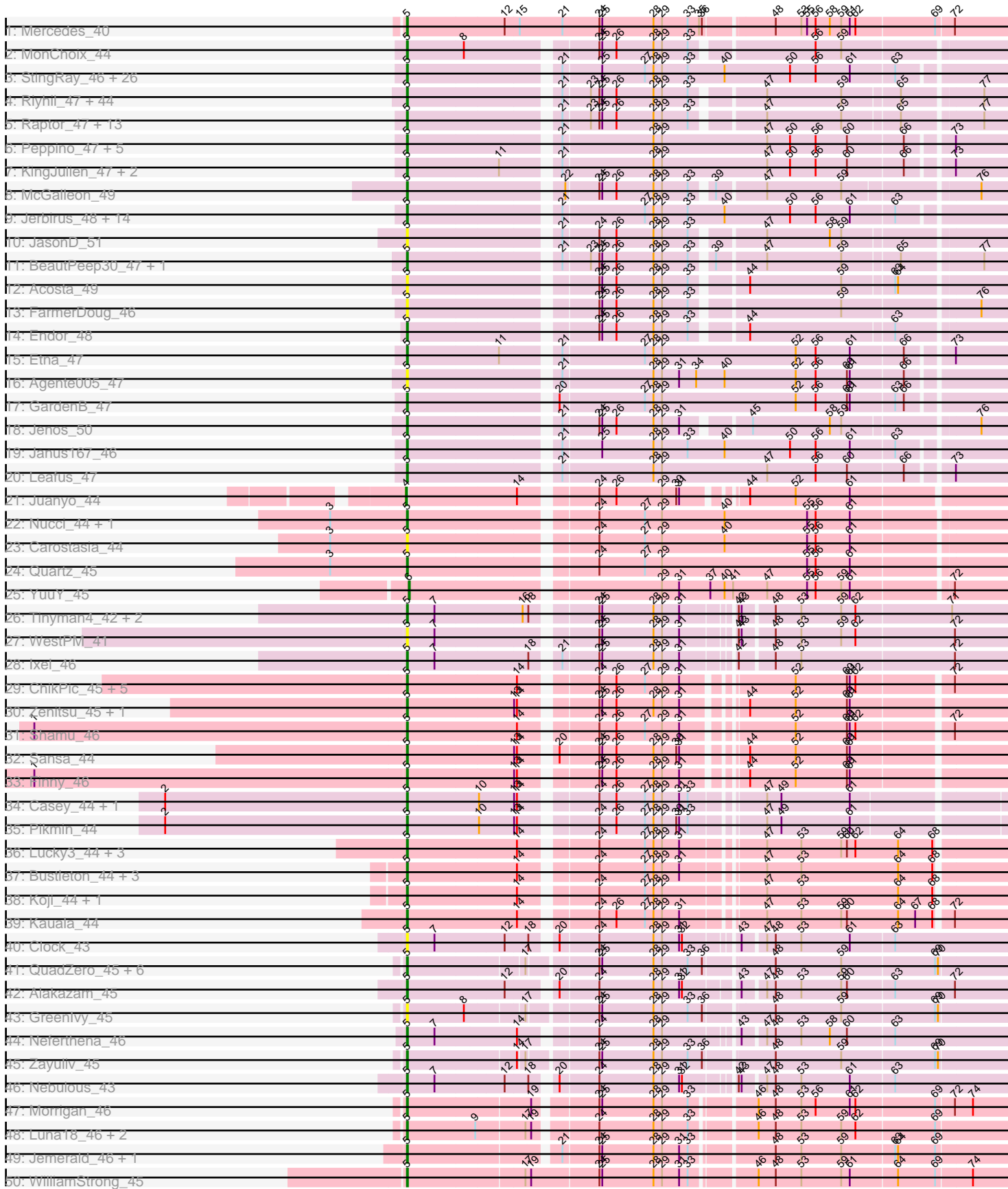
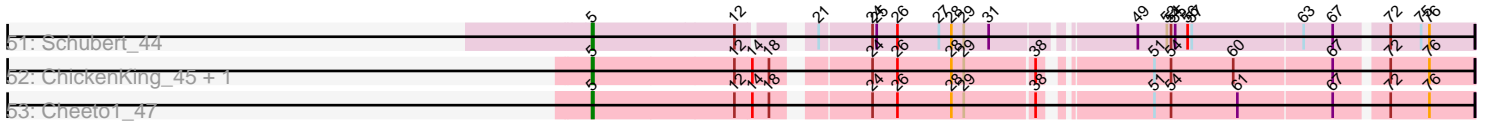


Pham 657



Pham 657



A series of horizontal lines, likely representing a sequence alignment or a set of data rows, extending across the width of the page. The lines are evenly spaced and cover the majority of the lower half of the image.

Note: Tracks are now grouped by subcluster and scaled. Switching in subcluster is indicated by changes in track color. Track scale is now set by default to display the region 30 bp upstream of start 1 to 30 bp downstream of the last possible start. If this default region is judged to be packed too tightly with annotated starts, the track will be further scaled to only show that region of the ORF with annotated starts. This action will be indicated by adding "Zoomed" to the title. For starts, yellow indicates the location of called starts comprised solely of Glimmer/GeneMark auto-annotations, green indicates the location of called starts with at least 1 manual gene annotation.

Pham 657 Report

This analysis was run 04/28/24 on database version 559.

Pham number 657 has 185 members, 27 are drafts.

Phages represented in each track:

- Track 1 : Mercedes_40
- Track 2 : MonChoix_44
- Track 3 : StingRay_46, Erla_46, HankSprout_49, Garey24_47, Kale_46, ManRay_46, Winzigespinne_46, TeddyBear_46, Aubergine_46, Duocatuli_46, Pocket_46, Bonino_46, AranulaLuti_46, Asta_49, Gershwin_46, Nattles_46, JeriBeth_48, Calix_46, Christoph_46, Espinosa_46, Gelo_46, Baines_46, Oats_46, Tenda_46, Chako_46, JasperRussell_46, Gubbabump_46
- Track 4 : Rihhil_47, Dothraki_47, Martin_48, Kurt1_47, Ludgate_47, Bandik_47, Greys_47, Thorongil_47, Renzie_47, Strathdee_47, TatarkaPM_47, Ioannes_47, SJay_47, Vispistious_48, Phireproof_47, Inventa_47, SoilGremlin_48, Dave_47, NickSell_49, Rapphep_47, Robinson_47, ParleG_47, Alyxandracam_47, Stanktossa_47, Superfresh_47, OldNelly_48, MillyPhilly_47, Peep_47, Delphidian_49, Figueroism_47, Zada_48, Phiderman_49, Antoinette_47, AlexAdler_47, Nagem_47, PuppyEggo_47, Phriends_47, Pherferi_47, ShaiHulud_48, Shee_47, MrWorldwide_47, Byron23_48, AxiPup_47, TinSulphur_48, MaeLinda_47
- Track 5 : Raptor_47, BonesMcCoy_47, Convict_47, Oxtober96_48, BigRedClifford_47, WildNOut_47, Blage_47, Velene_47, Gargoyle_47, Knox_47, Lovelyunicorn_47, Teagan_47, Den3_47, Thompsone_47
- Track 6 : Peppino_47, Redfield_47, Balsa_46, Hamlet_47, BeeBee8_48, Schnapsidee_47
- Track 7 : KingJulien_47, Raccoon_47, Stormbreaker8_46
- Track 8 : McGalleon_49
- Track 9 : Jerbirus_48, StirfryIV_48, Papafritta_46, Benjalauren_47, Klimt_47, HanSolo_46, Chamuel_46, SonOfLevi_47, Ilzat_46, KannH_46, Clancy_46, HungryHenry_48, Rog141_48, Etta_46, Sedgewig_46
- Track 10 : JasonD_51
- Track 11 : BeautPeep30_47, PhredFlintston_47
- Track 12 : Acosta_49
- Track 13 : FarmerDoug_46
- Track 14 : Endor_48
- Track 15 : Etna_47
- Track 16 : Agente005_47
- Track 17 : GardenB_47
- Track 18 : Jenos_50
- Track 19 : Janus167_46
- Track 20 : Leafus_47
- Track 21 : Juanyo_44

- Track 22 : Nucci_44, Mandalorian_44
- Track 23 : Carostasia_44
- Track 24 : Quartz_45
- Track 25 : YuuY_45
- Track 26 : Tinyman4_42, Schimmels22_42, HerculesXL_43
- Track 27 : WestPM_41
- Track 28 : Ixel_46
- Track 29 : ChikPic_45, Eleri_45, Glamour_45, ColaCorta_45, Andromedas_45, Saratos_45
- Track 30 : Zenitsu_45, MCubed_45
- Track 31 : Shamu_46
- Track 32 : Sansa_44
- Track 33 : Finny_46
- Track 34 : Casey_44, Pajaza_44
- Track 35 : Pikmin_44
- Track 36 : Lucky3_44, Golden_44, SirVictor_45, Guetzie_45
- Track 37 : Bustleton_44, Pherbot_44, BouleyBill_45, Sinatra_45
- Track 38 : Koji_44, PrincePhergus_44
- Track 39 : Kauala_44
- Track 40 : Clock_43
- Track 41 : QuadZero_45, Fulton_45, LilTerminator_45, Hasitha_45, CaptainRex_45, Librie_45, Zepp_45
- Track 42 : Alakazam_45
- Track 43 : Greenlvy_45
- Track 44 : Neferthena_46
- Track 45 : Zayuliv_45
- Track 46 : Nebulous_43
- Track 47 : Morigan_46
- Track 48 : Luna18_46, KatChan_46, Chepli_46
- Track 49 : Jemerald_46, Juicer_46
- Track 50 : WilliamStrong_45
- Track 51 : Schubert_44
- Track 52 : ChickenKing_45, GaeCeo_47
- Track 53 : Cheeto1_47

Summary of Final Annotations (See graph section above for start numbers):

The start number called the most often in the published annotations is 5, it was called in 156 of the 158 non-draft genes in the pham.

Genes that call this "Most Annotated" start:

- Acosta_49, Agente005_47, Alakazam_45, AlexAdler_47, Alyxandracam_47, Andromedas_45, Antoinette_47, AranulaLuti_46, Asta_49, Aubergine_46, AxiPup_47, Baines_46, Balsa_46, Bandik_47, BeautPeep30_47, BeeBee8_48, Benjalauren_47, BigRedClifford_47, Blage_47, BonesMcCoy_47, Bonino_46, BouleyBill_45, Bustleton_44, Byron23_48, Calix_46, CaptainRex_45, Carostasia_44, Casey_44, Chako_46, Chamuel_46, Cheeto1_47, Chepli_46, ChickenKing_45, ChikPic_45, Christoph_46, Clancy_46, Clock_43, ColaCorta_45, Convict_47, Dave_47, Delphidian_49, Den3_47, Dothraki_47, Duocatuli_46, Eleri_45, Endor_48, Erla_46, Espinosa_46, Etna_47, Etta_46, FarmerDoug_46, Figueroism_47,

Finny_46, Fulton_45, GaeCeo_47, GardenB_47, Garey24_47, Gargoyle_47, Gelo_46, Gershwin_46, Glamour_45, Golden_44, Greenlvy_45, Greys_47, Gubbabump_46, Guetzie_45, Hamlet_47, HanSolo_46, HankSprout_49, Hasitha_45, HerculesXL_43, HungryHenry_48, Ilzat_46, Inventa_47, Ioannes_47, Ixel_46, Janus167_46, JasonD_51, JasperRussell_46, Jemerald_46, Jenos_50, Jerbirus_48, JeriBeth_48, Juicer_46, Kale_46, KannH_46, KatChan_46, Kauala_44, KingJulien_47, Klimt_47, Knox_47, Koji_44, Kurt1_47, Leafus_47, Librie_45, LilTerminator_45, Lovelyunicorn_47, Lucky3_44, Ludgate_47, Luna18_46, MCubed_45, MaeLinda_47, ManRay_46, Mandalorian_44, Martin_48, McGalleon_49, Mercedes_40, MillyPhilly_47, MonChoix_44, Morrigan_46, MrWorldwide_47, Nagem_47, Nattles_46, Nebulous_43, Neferthena_46, NickSell_49, Nucci_44, Oats_46, OldNelly_48, Oxtober96_48, Pajaza_44, Papafritta_46, ParleG_47, Peep_47, Peppino_47, Pherbot_44, Pherferi_47, Phiderman_49, Phireproof_47, PhredFlintston_47, Phriends_47, Pikmin_44, Pocket_46, PrincePhergus_44, PuppyEggo_47, QuadZero_45, Quartz_45, Raccoon_47, Rapheph_47, Raptor_47, Redfield_47, Renzie_47, Riyhil_47, Robinson_47, Rog141_48, SJay_47, Sansa_44, Saratos_45, Schimmels22_42, Schnapsidee_47, Schubert_44, Sedgewig_46, ShaiHulud_48, Shamu_46, Shee_47, Sinatra_45, SirVictor_45, SoilGremlin_48, SonOfLevi_47, Stanktossa_47, StingRay_46, StirfryIV_48, Stormbreaker8_46, Strathdee_47, Superfresh_47, TatarkaPM_47, Teagan_47, TeddyBear_46, Tenda_46, Thompsone_47, Thorongil_47, TinSulphur_48, Tinyman4_42, Velene_47, Vispistious_48, WestPM_41, WildNOut_47, WilliamStrong_45, Winzigespinne_46, Zada_48, Zayuliv_45, Zenitsu_45, Zepp_45,

Genes that have the "Most Annotated" start but do not call it:

-

Genes that do not have the "Most Annotated" start:

- Juanyo_44, YuuY_45,

Summary by start number:

Start 4:

- Found in 1 of 185 (0.5%) of genes in pham
- Manual Annotations of this start: 1 of 158
- Called 100.0% of time when present
- Phage (with cluster) where this start called: Juanyo_44 (EA10),

Start 5:

- Found in 183 of 185 (98.9%) of genes in pham
- Manual Annotations of this start: 156 of 158
- Called 100.0% of time when present
- Phage (with cluster) where this start called: Acosta_49 (EA1), Agente005_47 (EA1), Alakazam_45 (EA5), AlexAdler_47 (EA1), Alyxandracam_47 (EA1), Andromedas_45 (EA2), Antoinette_47 (EA1), AranulaLuti_46 (EA1), Asta_49 (EA1), Aubergine_46 (EA1), AxiPup_47 (EA1), Baines_46 (EA1), Balsa_46 (EA1), Bandik_47 (EA1), BeautPeep30_47 (EA1), BeeBee8_48 (EA1), Benjalauen_47 (EA1), BigRedClifford_47 (EA1), Blage_47 (EA1), BonesMcCoy_47 (EA1), Bonino_46 (EA1), BouleyBill_45 (EA4), Bustleton_44 (EA4), Byron23_48 (EA1), Calix_46 (EA1), CaptainRex_45 (EA5), Carostasia_44 (EA10), Casey_44 (EA3), Chako_46 (EA1), Chamuel_46 (EA1), Cheeto1_47 (EA9), Chepli_46 (EA6), ChickenKing_45 (EA9), ChikPic_45 (EA2), Christoph_46 (EA1), Clancy_46 (EA1), Clock_43 (EA5),

ColaCorta_45 (EA2), Convict_47 (EA1), Dave_47 (EA1), Delphidian_49 (EA1), Den3_47 (EA1), Dothraki_47 (EA1), Duocatuli_46 (EA1), Eleri_45 (EA2), Endor_48 (EA1), Erla_46 (EA1), Espinosa_46 (EA1), Etna_47 (EA1), Etta_46 (EA1), FarmerDoug_46 (EA1), Figueroism_47 (EA1), Finny_46 (EA2), Fulton_45 (EA5), GaeCeo_47 (EA9), GardenB_47 (EA1), Garey24_47 (EA1), Gargoyle_47 (EA1), Gelo_46 (EA1), Gershwin_46 (EA1), Glamour_45 (EA2), Golden_44 (EA4), Greenlvy_45 (EA5), Greys_47 (EA1), Gubbabump_46 (EA1), Guetzie_45 (EA4), Hamlet_47 (EA1), HanSolo_46 (EA1), HankSprout_49 (EA1), Hasitha_45 (EA5), HerculesXL_43 (EA11), HungryHenry_48 (EA1), Ilzat_46 (EA1), Inventa_47 (EA1), Ioannes_47 (EA1), Ixel_46 (EA11), Janus167_46 (EA1), JasonD_51 (EA1), JasperRussell_46 (EA1), Jemerald_46 (EA6), Jenos_50 (EA1), Jerbirus_48 (EA1), JeriBeth_48 (EA1), Juicer_46 (EA6), Kale_46 (EA1), KannH_46 (EA1), KatChan_46 (EA6), Kauala_44 (EA4), KingJulien_47 (EA1), Klimt_47 (EA1), Knox_47 (EA1), Koji_44 (EA4), Kurt1_47 (EA1), Leafus_47 (EA1), Librie_45 (EA5), LiTerminator_45 (EA5), Lovelyunicorn_47 (EA1), Lucky3_44 (EA4), Ludgate_47 (EA1), Luna18_46 (EA6), MCubed_45 (EA2), MaeLinda_47 (EA1), ManRay_46 (EA1), Mandalorian_44 (EA10), Martin_48 (EA1), McGalleon_49 (EA1), Mercedes_40 (EA), MillyPhilly_47 (EA1), MonChoix_44 (EA1), Morrigan_46 (EA6), MrWorldwide_47 (EA1), Nagem_47 (EA1), Nattles_46 (EA1), Nebulous_43 (EA5), Neferthena_46 (EA5), NickSell_49 (EA1), Nucci_44 (EA10), Oats_46 (EA1), OldNelly_48 (EA1), Oxtober96_48 (EA1), Pajaza_44 (EA3), Papafritta_46 (EA1), ParleG_47 (EA1), Peep_47 (EA1), Peppino_47 (EA1), Pherbot_44 (EA4), Pherferi_47 (EA1), Phiderman_49 (EA1), Phireproof_47 (EA1), PhredFlintston_47 (EA1), Phriends_47 (EA1), Pikmin_44 (EA3), Pocket_46 (EA1), PrincePhergus_44 (EA4), PuppyEggo_47 (EA1), QuadZero_45 (EA5), Quartz_45 (EA10), Raccoon_47 (EA1), Rapheph_47 (EA1), Raptor_47 (EA1), Redfield_47 (EA1), Renzie_47 (EA1), Rihhil_47 (EA1), Robinson_47 (EA1), Rog141_48 (EA1), SJay_47 (EA1), Sansa_44 (EA2), Saratos_45 (EA2), Schimmels22_42 (EA11), Schnapsidee_47 (EA1), Schubert_44 (EA8), Sedgewig_46 (EA1), ShaiHulud_48 (EA1), Shamu_46 (EA2), Shee_47 (EA1), Sinatra_45 (EA4), SirVictor_45 (EA4), SoilGremlin_48 (EA1), SonOfLevi_47 (EA1), Stanktossa_47 (EA1), StingRay_46 (EA1), StirfryIV_48 (EA1), Stormbreaker8_46 (EA1), Strathdee_47 (EA1), Superfresh_47 (EA1), TatarkaPM_47 (EA1), Teagan_47 (EA1), TeddyBear_46 (EA1), Tenda_46 (EA1), Thompsone_47 (EA1), Thorongil_47 (EA1), TinSulphur_48 (EA1), Tinyman4_42 (EA11), Velene_47 (EA1), Vispistious_48 (EA1), WestPM_41 (EA11), WildNOut_47 (EA1), WilliamStrong_45 (EA6), Winzigespinne_46 (EA1), Zada_48 (EA1), Zayuliv_45 (EA5), Zenitsu_45 (EA2), Zepp_45 (EA5),

Start 6:

- Found in 1 of 185 (0.5%) of genes in pham
- Manual Annotations of this start: 1 of 158
- Called 100.0% of time when present
- Phage (with cluster) where this start called: YuuY_45 (EA10),

Summary by clusters:

There are 11 clusters represented in this pham: EA11, EA10, EA, EA9, EA8, EA1, EA3, EA2, EA5, EA4, EA6,

Info for manual annotations of cluster EA:

- Start number 5 was manually annotated 1 time for cluster EA.

Info for manual annotations of cluster EA1:

- Start number 5 was manually annotated 104 times for cluster EA1.

Info for manual annotations of cluster EA10:

- Start number 4 was manually annotated 1 time for cluster EA10.
- Start number 5 was manually annotated 3 times for cluster EA10.
- Start number 6 was manually annotated 1 time for cluster EA10.

Info for manual annotations of cluster EA11:

- Start number 5 was manually annotated 4 times for cluster EA11.

Info for manual annotations of cluster EA2:

- Start number 5 was manually annotated 11 times for cluster EA2.

Info for manual annotations of cluster EA3:

- Start number 5 was manually annotated 3 times for cluster EA3.

Info for manual annotations of cluster EA4:

- Start number 5 was manually annotated 10 times for cluster EA4.

Info for manual annotations of cluster EA5:

- Start number 5 was manually annotated 9 times for cluster EA5.

Info for manual annotations of cluster EA6:

- Start number 5 was manually annotated 7 times for cluster EA6.

Info for manual annotations of cluster EA8:

- Start number 5 was manually annotated 1 time for cluster EA8.

Info for manual annotations of cluster EA9:

- Start number 5 was manually annotated 3 times for cluster EA9.

Gene Information:

Gene: Acosta_49 Start: 34534, Stop: 33953, Start Num: 5

Candidate Starts for Acosta_49:

(Start: 5 @34534 has 156 MA's), (24, 34354), (25, 34351), (26, 34336), (28, 34297), (29, 34288), (33, 34261), (44, 34213), (59, 34117), (63, 34066), (64, 34063),

Gene: Agente005_47 Start: 34353, Stop: 33754, Start Num: 5

Candidate Starts for Agente005_47:

(Start: 5 @34353 has 156 MA's), (21, 34209), (28, 34116), (29, 34107), (31, 34089), (34, 34071), (40, 34041), (52, 33966), (56, 33945), (60, 33912), (61, 33909), (66, 33855),

Gene: Alakazam_45 Start: 33765, Stop: 33172, Start Num: 5

Candidate Starts for Alakazam_45:

(Start: 5 @33765 has 156 MA's), (12, 33666), (20, 33624), (24, 33585), (28, 33528), (29, 33519), (31, 33501), (32, 33498), (43, 33447), (47, 33426), (48, 33417), (53, 33390), (59, 33348), (60, 33342), (63, 33294), (72, 33231),

Gene: AlexAdler_47 Start: 34360, Stop: 33779, Start Num: 5

Candidate Starts for AlexAdler_47:

(Start: 5 @34360 has 156 MA's), (21, 34216), (23, 34189), (24, 34180), (25, 34177), (26, 34162), (28, 34123), (29, 34114), (33, 34087), (47, 34021), (59, 33943), (65, 33886), (77, 33808),

Gene: Alyxandracam_47 Start: 34370, Stop: 33789, Start Num: 5

Candidate Starts for Alyxandracam_47:

(Start: 5 @34370 has 156 MA's), (21, 34226), (23, 34199), (24, 34190), (25, 34187), (26, 34172), (28, 34133), (29, 34124), (33, 34097), (47, 34031), (59, 33953), (65, 33896), (77, 33818),

Gene: Andromedas_45 Start: 33294, Stop: 32716, Start Num: 5

Candidate Starts for Andromedas_45:

(Start: 5 @33294 has 156 MA's), (14, 33183), (24, 33114), (26, 33096), (27, 33066), (29, 33048), (31, 33030), (52, 32931), (60, 32877), (61, 32874), (62, 32868), (72, 32775),

Gene: Antoinette_47 Start: 34360, Stop: 33779, Start Num: 5

Candidate Starts for Antoinette_47:

(Start: 5 @34360 has 156 MA's), (21, 34216), (23, 34189), (24, 34180), (25, 34177), (26, 34162), (28, 34123), (29, 34114), (33, 34087), (47, 34021), (59, 33943), (65, 33886), (77, 33808),

Gene: AranulaLuti_46 Start: 34075, Stop: 33476, Start Num: 5

Candidate Starts for AranulaLuti_46:

(Start: 5 @34075 has 156 MA's), (21, 33931), (25, 33892), (27, 33847), (28, 33838), (29, 33829), (33, 33802), (40, 33763), (50, 33694), (56, 33667), (61, 33631), (63, 33586),

Gene: Asta_49 Start: 34085, Stop: 33486, Start Num: 5

Candidate Starts for Asta_49:

(Start: 5 @34085 has 156 MA's), (21, 33941), (25, 33902), (27, 33857), (28, 33848), (29, 33839), (33, 33812), (40, 33773), (50, 33704), (56, 33677), (61, 33641), (63, 33596),

Gene: Aubergine_46 Start: 34085, Stop: 33486, Start Num: 5

Candidate Starts for Aubergine_46:

(Start: 5 @34085 has 156 MA's), (21, 33941), (25, 33902), (27, 33857), (28, 33848), (29, 33839), (33, 33812), (40, 33773), (50, 33704), (56, 33677), (61, 33641), (63, 33596),

Gene: AxiPup_47 Start: 34339, Stop: 33758, Start Num: 5

Candidate Starts for AxiPup_47:

(Start: 5 @34339 has 156 MA's), (21, 34195), (23, 34168), (24, 34159), (25, 34156), (26, 34141), (28, 34102), (29, 34093), (33, 34066), (47, 34000), (59, 33922), (65, 33865), (77, 33787),

Gene: Baines_46 Start: 34078, Stop: 33479, Start Num: 5

Candidate Starts for Baines_46:

(Start: 5 @34078 has 156 MA's), (21, 33934), (25, 33895), (27, 33850), (28, 33841), (29, 33832), (33, 33805), (40, 33766), (50, 33697), (56, 33670), (61, 33634), (63, 33589),

Gene: Balsa_46 Start: 34340, Stop: 33741, Start Num: 5

Candidate Starts for Balsa_46:

(Start: 5 @34340 has 156 MA's), (21, 34196), (28, 34103), (29, 34094), (47, 33983), (50, 33959), (56, 33932), (60, 33899), (66, 33842), (73, 33800),

Gene: Bandik_47 Start: 34365, Stop: 33784, Start Num: 5

Candidate Starts for Bandik_47:

(Start: 5 @34365 has 156 MA's), (21, 34221), (23, 34194), (24, 34185), (25, 34182), (26, 34167), (28, 34128), (29, 34119), (33, 34092), (47, 34026), (59, 33948), (65, 33891), (77, 33813),

Gene: BeautPeep30_47 Start: 34371, Stop: 33790, Start Num: 5

Candidate Starts for BeautPeep30_47:

(Start: 5 @34371 has 156 MA's), (21, 34227), (23, 34200), (24, 34191), (25, 34188), (26, 34173), (28, 34134), (29, 34125), (33, 34098), (39, 34080), (47, 34032), (59, 33954), (65, 33897), (77, 33819),

Gene: BeeBee8_48 Start: 34511, Stop: 33912, Start Num: 5

Candidate Starts for BeeBee8_48:

(Start: 5 @34511 has 156 MA's), (21, 34367), (28, 34274), (29, 34265), (47, 34154), (50, 34130), (56, 34103), (60, 34070), (66, 34013), (73, 33971),

Gene: Benjalauren_47 Start: 34091, Stop: 33492, Start Num: 5

Candidate Starts for Benjalauren_47:

(Start: 5 @34091 has 156 MA's), (21, 33947), (27, 33863), (28, 33854), (29, 33845), (33, 33818), (40, 33779), (50, 33710), (56, 33683), (61, 33647), (63, 33602),

Gene: BigRedClifford_47 Start: 34369, Stop: 33788, Start Num: 5

Candidate Starts for BigRedClifford_47:

(Start: 5 @34369 has 156 MA's), (21, 34225), (23, 34198), (24, 34189), (25, 34186), (26, 34171), (28, 34132), (29, 34123), (33, 34096), (47, 34030), (59, 33952), (65, 33895), (77, 33817),

Gene: Blage_47 Start: 34369, Stop: 33788, Start Num: 5

Candidate Starts for Blage_47:

(Start: 5 @34369 has 156 MA's), (21, 34225), (23, 34198), (24, 34189), (25, 34186), (26, 34171), (28, 34132), (29, 34123), (33, 34096), (47, 34030), (59, 33952), (65, 33895), (77, 33817),

Gene: BonesMcCoy_47 Start: 34369, Stop: 33788, Start Num: 5

Candidate Starts for BonesMcCoy_47:

(Start: 5 @34369 has 156 MA's), (21, 34225), (23, 34198), (24, 34189), (25, 34186), (26, 34171), (28, 34132), (29, 34123), (33, 34096), (47, 34030), (59, 33952), (65, 33895), (77, 33817),

Gene: Bonino_46 Start: 34064, Stop: 33465, Start Num: 5

Candidate Starts for Bonino_46:

(Start: 5 @34064 has 156 MA's), (21, 33920), (25, 33881), (27, 33836), (28, 33827), (29, 33818), (33, 33791), (40, 33752), (50, 33683), (56, 33656), (61, 33620), (63, 33575),

Gene: BouleyBill_45 Start: 33328, Stop: 32741, Start Num: 5

Candidate Starts for BouleyBill_45:

(Start: 5 @33328 has 156 MA's), (14, 33217), (24, 33148), (27, 33100), (28, 33091), (29, 33082), (31, 33064), (47, 32989), (53, 32953), (64, 32851), (68, 32815),

Gene: Bustleton_44 Start: 33122, Stop: 32535, Start Num: 5

Candidate Starts for Bustleton_44:

(Start: 5 @33122 has 156 MA's), (14, 33011), (24, 32942), (27, 32894), (28, 32885), (29, 32876), (31, 32858), (47, 32783), (53, 32747), (64, 32645), (68, 32609),

Gene: Byron23_48 Start: 34368, Stop: 33787, Start Num: 5

Candidate Starts for Byron23_48:

(Start: 5 @34368 has 156 MA's), (21, 34224), (23, 34197), (24, 34188), (25, 34185), (26, 34170), (28, 34131), (29, 34122), (33, 34095), (47, 34029), (59, 33951), (65, 33894), (77, 33816),

Gene: Calix_46 Start: 34071, Stop: 33472, Start Num: 5

Candidate Starts for Calix_46:

(Start: 5 @34071 has 156 MA's), (21, 33927), (25, 33888), (27, 33843), (28, 33834), (29, 33825), (33, 33798), (40, 33759), (50, 33690), (56, 33663), (61, 33627), (63, 33582),

Gene: CaptainRex_45 Start: 31777, Stop: 31184, Start Num: 5

Candidate Starts for CaptainRex_45:

(Start: 5 @31777 has 156 MA's), (17, 31663), (24, 31597), (25, 31594), (28, 31540), (29, 31531), (33, 31504), (36, 31489), (48, 31423), (59, 31354), (69, 31258), (70, 31255),

Gene: Carostasia_44 Start: 32851, Stop: 32249, Start Num: 5

Candidate Starts for Carostasia_44:

(3, 32932), (Start: 5 @32851 has 156 MA's), (24, 32671), (27, 32623), (29, 32605), (40, 32539), (55, 32452), (56, 32443), (61, 32407),

Gene: Casey_44 Start: 32779, Stop: 32198, Start Num: 5

Candidate Starts for Casey_44:

(2, 33034), (Start: 5 @32779 has 156 MA's), (10, 32707), (13, 32671), (14, 32668), (24, 32599), (26, 32581), (27, 32551), (28, 32542), (29, 32533), (31, 32515), (33, 32506), (47, 32440), (49, 32425), (61, 32353),

Gene: Chako_46 Start: 34075, Stop: 33476, Start Num: 5

Candidate Starts for Chako_46:

(Start: 5 @34075 has 156 MA's), (21, 33931), (25, 33892), (27, 33847), (28, 33838), (29, 33829), (33, 33802), (40, 33763), (50, 33694), (56, 33667), (61, 33631), (63, 33586),

Gene: Chamuel_46 Start: 34097, Stop: 33498, Start Num: 5

Candidate Starts for Chamuel_46:

(Start: 5 @34097 has 156 MA's), (21, 33953), (27, 33869), (28, 33860), (29, 33851), (33, 33824), (40, 33785), (50, 33716), (56, 33689), (61, 33653), (63, 33608),

Gene: Cheeto1_47 Start: 33827, Stop: 33249, Start Num: 5

Candidate Starts for Cheeto1_47:

(Start: 5 @33827 has 156 MA's), (12, 33728), (14, 33716), (18, 33704), (24, 33647), (26, 33629), (28, 33590), (29, 33581), (38, 33533), (51, 33467), (54, 33455), (61, 33407), (67, 33341), (72, 33308), (76, 33281),

Gene: Chepli_46 Start: 32667, Stop: 32074, Start Num: 5

Candidate Starts for Chepli_46:

(Start: 5 @32667 has 156 MA's), (9, 32598), (17, 32550), (19, 32544), (24, 32487), (28, 32430), (29, 32421), (33, 32394), (46, 32334), (48, 32316), (53, 32289), (59, 32247), (62, 32232), (69, 32151),

Gene: ChickenKing_45 Start: 33720, Stop: 33142, Start Num: 5

Candidate Starts for ChickenKing_45:

(Start: 5 @33720 has 156 MA's), (12, 33621), (14, 33609), (18, 33597), (24, 33540), (26, 33522), (28, 33483), (29, 33474), (38, 33426), (51, 33360), (54, 33348), (60, 33303), (67, 33234), (72, 33201), (76, 33174),

Gene: ChikPic_45 Start: 33148, Stop: 32570, Start Num: 5

Candidate Starts for ChikPic_45:

(Start: 5 @33148 has 156 MA's), (14, 33037), (24, 32968), (26, 32950), (27, 32920), (29, 32902), (31, 32884), (52, 32785), (60, 32731), (61, 32728), (62, 32722), (72, 32629),

Gene: Christoph_46 Start: 34084, Stop: 33485, Start Num: 5

Candidate Starts for Christoph_46:

(Start: 5 @34084 has 156 MA's), (21, 33940), (25, 33901), (27, 33856), (28, 33847), (29, 33838), (33, 33811), (40, 33772), (50, 33703), (56, 33676), (61, 33640), (63, 33595),

Gene: Clancy_46 Start: 34120, Stop: 33521, Start Num: 5

Candidate Starts for Clancy_46:

(Start: 5 @34120 has 156 MA's), (21, 33976), (27, 33892), (28, 33883), (29, 33874), (33, 33847), (40, 33808), (50, 33739), (56, 33712), (61, 33676), (63, 33631),

Gene: Clock_43 Start: 34501, Stop: 33911, Start Num: 5

Candidate Starts for Clock_43:

(Start: 5 @34501 has 156 MA's), (7, 34474), (12, 34402), (18, 34378), (20, 34360), (24, 34321), (28, 34264), (29, 34255), (31, 34237), (32, 34234), (43, 34186), (47, 34165), (48, 34156), (53, 34129), (61, 34078), (63, 34033),

Gene: ColaCorta_45 Start: 33294, Stop: 32716, Start Num: 5

Candidate Starts for ColaCorta_45:

(Start: 5 @33294 has 156 MA's), (14, 33183), (24, 33114), (26, 33096), (27, 33066), (29, 33048), (31, 33030), (52, 32931), (60, 32877), (61, 32874), (62, 32868), (72, 32775),

Gene: Convict_47 Start: 34369, Stop: 33788, Start Num: 5

Candidate Starts for Convict_47:

(Start: 5 @34369 has 156 MA's), (21, 34225), (23, 34198), (24, 34189), (25, 34186), (26, 34171), (28, 34132), (29, 34123), (33, 34096), (47, 34030), (59, 33952), (65, 33895), (77, 33817),

Gene: Dave_47 Start: 34360, Stop: 33779, Start Num: 5

Candidate Starts for Dave_47:

(Start: 5 @34360 has 156 MA's), (21, 34216), (23, 34189), (24, 34180), (25, 34177), (26, 34162), (28, 34123), (29, 34114), (33, 34087), (47, 34021), (59, 33943), (65, 33886), (77, 33808),

Gene: Delphidian_49 Start: 34368, Stop: 33787, Start Num: 5

Candidate Starts for Delphidian_49:

(Start: 5 @34368 has 156 MA's), (21, 34224), (23, 34197), (24, 34188), (25, 34185), (26, 34170), (28, 34131), (29, 34122), (33, 34095), (47, 34029), (59, 33951), (65, 33894), (77, 33816),

Gene: Den3_47 Start: 34374, Stop: 33793, Start Num: 5

Candidate Starts for Den3_47:

(Start: 5 @34374 has 156 MA's), (21, 34230), (23, 34203), (24, 34194), (25, 34191), (26, 34176), (28, 34137), (29, 34128), (33, 34101), (47, 34035), (59, 33957), (65, 33900), (77, 33822),

Gene: Dothraki_47 Start: 34368, Stop: 33787, Start Num: 5

Candidate Starts for Dothraki_47:

(Start: 5 @34368 has 156 MA's), (21, 34224), (23, 34197), (24, 34188), (25, 34185), (26, 34170), (28, 34131), (29, 34122), (33, 34095), (47, 34029), (59, 33951), (65, 33894), (77, 33816),

Gene: Duocatuli_46 Start: 34075, Stop: 33476, Start Num: 5

Candidate Starts for Duocatuli_46:

(Start: 5 @34075 has 156 MA's), (21, 33931), (25, 33892), (27, 33847), (28, 33838), (29, 33829), (33, 33802), (40, 33763), (50, 33694), (56, 33667), (61, 33631), (63, 33586),

Gene: Eleri_45 Start: 33138, Stop: 32560, Start Num: 5

Candidate Starts for Eleri_45:

(Start: 5 @33138 has 156 MA's), (14, 33027), (24, 32958), (26, 32940), (27, 32910), (29, 32892), (31, 32874), (52, 32775), (60, 32721), (61, 32718), (62, 32712), (72, 32619),

Gene: Endor_48 Start: 34565, Stop: 33984, Start Num: 5

Candidate Starts for Endor_48:

(Start: 5 @34565 has 156 MA's), (24, 34385), (25, 34382), (26, 34367), (28, 34328), (29, 34319), (33, 34292), (44, 34244), (63, 34097),

Gene: Erla_46 Start: 34068, Stop: 33469, Start Num: 5

Candidate Starts for Erla_46:

(Start: 5 @34068 has 156 MA's), (21, 33924), (25, 33885), (27, 33840), (28, 33831), (29, 33822), (33, 33795), (40, 33756), (50, 33687), (56, 33660), (61, 33624), (63, 33579),

Gene: Espinosa_46 Start: 34083, Stop: 33484, Start Num: 5

Candidate Starts for Espinosa_46:

(Start: 5 @34083 has 156 MA's), (21, 33939), (25, 33900), (27, 33855), (28, 33846), (29, 33837), (33, 33810), (40, 33771), (50, 33702), (56, 33675), (61, 33639), (63, 33594),

Gene: Etna_47 Start: 34387, Stop: 33788, Start Num: 5

Candidate Starts for Etna_47:

(Start: 5 @34387 has 156 MA's), (11, 34294), (21, 34243), (27, 34159), (28, 34150), (29, 34141), (52, 34000), (56, 33979), (61, 33943), (66, 33889), (73, 33847),

Gene: Etta_46 Start: 34072, Stop: 33473, Start Num: 5

Candidate Starts for Etta_46:

(Start: 5 @34072 has 156 MA's), (21, 33928), (27, 33844), (28, 33835), (29, 33826), (33, 33799), (40, 33760), (50, 33691), (56, 33664), (61, 33628), (63, 33583),

Gene: FarmerDoug_46 Start: 34072, Stop: 33488, Start Num: 5

Candidate Starts for FarmerDoug_46:

(Start: 5 @34072 has 156 MA's), (24, 33892), (25, 33889), (26, 33874), (28, 33835), (29, 33826), (33, 33799), (59, 33655), (76, 33520),

Gene: Figueroism_47 Start: 34359, Stop: 33778, Start Num: 5

Candidate Starts for Figueroism_47:

(Start: 5 @34359 has 156 MA's), (21, 34215), (23, 34188), (24, 34179), (25, 34176), (26, 34161), (28, 34122), (29, 34113), (33, 34086), (47, 34020), (59, 33942), (65, 33885), (77, 33807),

Gene: Finny_46 Start: 33132, Stop: 32554, Start Num: 5

Candidate Starts for Finny_46:

(1, 33522), (Start: 5 @33132 has 156 MA's), (13, 33024), (14, 33021), (24, 32952), (25, 32949), (26, 32934), (28, 32895), (29, 32886), (31, 32868), (44, 32817), (52, 32769), (60, 32715), (61, 32712),

Gene: Fulton_45 Start: 31778, Stop: 31185, Start Num: 5

Candidate Starts for Fulton_45:

(Start: 5 @31778 has 156 MA's), (17, 31664), (24, 31598), (25, 31595), (28, 31541), (29, 31532), (33, 31505), (36, 31490), (48, 31424), (59, 31355), (69, 31259), (70, 31256),

Gene: GaeCeo_47 Start: 33953, Stop: 33375, Start Num: 5

Candidate Starts for GaeCeo_47:

(Start: 5 @33953 has 156 MA's), (12, 33854), (14, 33842), (18, 33830), (24, 33773), (26, 33755), (28, 33716), (29, 33707), (38, 33659), (51, 33593), (54, 33581), (60, 33536), (67, 33467), (72, 33434), (76, 33407),

Gene: GardenB_47 Start: 34328, Stop: 33729, Start Num: 5

Candidate Starts for GardenB_47:

(Start: 5 @34328 has 156 MA's), (20, 34187), (27, 34100), (28, 34091), (29, 34082), (52, 33941), (56, 33920), (60, 33887), (61, 33884), (63, 33839), (66, 33830),

Gene: Garey24_47 Start: 34051, Stop: 33452, Start Num: 5

Candidate Starts for Garey24_47:

(Start: 5 @34051 has 156 MA's), (21, 33907), (25, 33868), (27, 33823), (28, 33814), (29, 33805), (33, 33778), (40, 33739), (50, 33670), (56, 33643), (61, 33607), (63, 33562),

Gene: Gargoyle_47 Start: 34374, Stop: 33793, Start Num: 5

Candidate Starts for Gargoyle_47:

(Start: 5 @34374 has 156 MA's), (21, 34230), (23, 34203), (24, 34194), (25, 34191), (26, 34176), (28, 34137), (29, 34128), (33, 34101), (47, 34035), (59, 33957), (65, 33900), (77, 33822),

Gene: Gelo_46 Start: 34078, Stop: 33479, Start Num: 5

Candidate Starts for Gelo_46:

(Start: 5 @34078 has 156 MA's), (21, 33934), (25, 33895), (27, 33850), (28, 33841), (29, 33832), (33, 33805), (40, 33766), (50, 33697), (56, 33670), (61, 33634), (63, 33589),

Gene: Gershwin_46 Start: 34085, Stop: 33486, Start Num: 5

Candidate Starts for Gershwin_46:

(Start: 5 @34085 has 156 MA's), (21, 33941), (25, 33902), (27, 33857), (28, 33848), (29, 33839), (33, 33812), (40, 33773), (50, 33704), (56, 33677), (61, 33641), (63, 33596),

Gene: Glamour_45 Start: 33286, Stop: 32708, Start Num: 5

Candidate Starts for Glamour_45:

(Start: 5 @33286 has 156 MA's), (14, 33175), (24, 33106), (26, 33088), (27, 33058), (29, 33040), (31, 33022), (52, 32923), (60, 32869), (61, 32866), (62, 32860), (72, 32767),

Gene: Golden_44 Start: 33208, Stop: 32621, Start Num: 5

Candidate Starts for Golden_44:

(Start: 5 @33208 has 156 MA's), (14, 33097), (24, 33028), (27, 32980), (28, 32971), (29, 32962), (31, 32944), (47, 32869), (53, 32833), (59, 32791), (60, 32785), (62, 32776), (64, 32731), (68, 32695),

Gene: Greenlvy_45 Start: 32133, Stop: 31540, Start Num: 5

Candidate Starts for Greenlvy_45:

(Start: 5 @32133 has 156 MA's), (8, 32076), (17, 32019), (24, 31953), (25, 31950), (28, 31896), (29, 31887), (33, 31860), (36, 31845), (48, 31779), (59, 31710), (69, 31614), (70, 31611),

Gene: Greys_47 Start: 34367, Stop: 33786, Start Num: 5

Candidate Starts for Greys_47:

(Start: 5 @34367 has 156 MA's), (21, 34223), (23, 34196), (24, 34187), (25, 34184), (26, 34169), (28, 34130), (29, 34121), (33, 34094), (47, 34028), (59, 33950), (65, 33893), (77, 33815),

Gene: Gubbabump_46 Start: 34065, Stop: 33466, Start Num: 5

Candidate Starts for Gubbabump_46:

(Start: 5 @34065 has 156 MA's), (21, 33921), (25, 33882), (27, 33837), (28, 33828), (29, 33819), (33, 33792), (40, 33753), (50, 33684), (56, 33657), (61, 33621), (63, 33576),

Gene: Guetzie_45 Start: 33193, Stop: 32606, Start Num: 5

Candidate Starts for Guetzie_45:

(Start: 5 @33193 has 156 MA's), (14, 33082), (24, 33013), (27, 32965), (28, 32956), (29, 32947), (31, 32929), (47, 32854), (53, 32818), (59, 32776), (60, 32770), (62, 32761), (64, 32716), (68, 32680),

Gene: Hamlet_47 Start: 34332, Stop: 33733, Start Num: 5

Candidate Starts for Hamlet_47:

(Start: 5 @34332 has 156 MA's), (21, 34188), (28, 34095), (29, 34086), (47, 33975), (50, 33951), (56, 33924), (60, 33891), (66, 33834), (73, 33792),

Gene: HanSolo_46 Start: 34075, Stop: 33476, Start Num: 5

Candidate Starts for HanSolo_46:

(Start: 5 @34075 has 156 MA's), (21, 33931), (27, 33847), (28, 33838), (29, 33829), (33, 33802), (40, 33763), (50, 33694), (56, 33667), (61, 33631), (63, 33586),

Gene: HankSprout_49 Start: 33952, Stop: 33353, Start Num: 5

Candidate Starts for HankSprout_49:

(Start: 5 @33952 has 156 MA's), (21, 33808), (25, 33769), (27, 33724), (28, 33715), (29, 33706), (33, 33679), (40, 33640), (50, 33571), (56, 33544), (61, 33508), (63, 33463),

Gene: Hasitha_45 Start: 31790, Stop: 31197, Start Num: 5

Candidate Starts for Hasitha_45:

(Start: 5 @31790 has 156 MA's), (17, 31676), (24, 31610), (25, 31607), (28, 31553), (29, 31544), (33, 31517), (36, 31502), (48, 31436), (59, 31367), (69, 31271), (70, 31268),

Gene: HerculesXL_43 Start: 31888, Stop: 31298, Start Num: 5

Candidate Starts for HerculesXL_43:

(Start: 5 @31888 has 156 MA's), (7, 31861), (16, 31771), (18, 31765), (24, 31708), (25, 31705), (28, 31651), (29, 31642), (31, 31624), (42, 31576), (43, 31573), (48, 31543), (53, 31516), (59, 31474), (62, 31459), (71, 31360),

Gene: HungryHenry_48 Start: 34080, Stop: 33481, Start Num: 5

Candidate Starts for HungryHenry_48:

(Start: 5 @34080 has 156 MA's), (21, 33936), (27, 33852), (28, 33843), (29, 33834), (33, 33807), (40, 33768), (50, 33699), (56, 33672), (61, 33636), (63, 33591),

Gene: Ilzat_46 Start: 34091, Stop: 33492, Start Num: 5

Candidate Starts for Ilzat_46:

(Start: 5 @34091 has 156 MA's), (21, 33947), (27, 33863), (28, 33854), (29, 33845), (33, 33818), (40, 33779), (50, 33710), (56, 33683), (61, 33647), (63, 33602),

Gene: Inventa_47 Start: 34365, Stop: 33784, Start Num: 5

Candidate Starts for Inventa_47:

(Start: 5 @34365 has 156 MA's), (21, 34221), (23, 34194), (24, 34185), (25, 34182), (26, 34167), (28, 34128), (29, 34119), (33, 34092), (47, 34026), (59, 33948), (65, 33891), (77, 33813),

Gene: Ioannes_47 Start: 34369, Stop: 33788, Start Num: 5

Candidate Starts for Ioannes_47:

(Start: 5 @34369 has 156 MA's), (21, 34225), (23, 34198), (24, 34189), (25, 34186), (26, 34171), (28, 34132), (29, 34123), (33, 34096), (47, 34030), (59, 33952), (65, 33895), (77, 33817),

Gene: Ixel_46 Start: 33565, Stop: 32975, Start Num: 5

Candidate Starts for Ixel_46:

(Start: 5 @33565 has 156 MA's), (7, 33538), (18, 33442), (21, 33421), (24, 33385), (25, 33382), (28, 33328), (29, 33319), (31, 33301), (42, 33253), (48, 33220), (53, 33193), (72, 33034),

Gene: Janus167_46 Start: 34072, Stop: 33473, Start Num: 5

Candidate Starts for Janus167_46:

(Start: 5 @34072 has 156 MA's), (21, 33928), (25, 33889), (28, 33835), (29, 33826), (33, 33799), (40, 33760), (50, 33691), (56, 33664), (61, 33628), (63, 33583),

Gene: JasonD_51 Start: 34462, Stop: 33881, Start Num: 5

Candidate Starts for JasonD_51:

(Start: 5 @34462 has 156 MA's), (21, 34318), (24, 34282), (26, 34264), (28, 34225), (29, 34216), (33, 34189), (47, 34123), (58, 34057), (59, 34045),

Gene: JasperRussell_46 Start: 34075, Stop: 33476, Start Num: 5

Candidate Starts for JasperRussell_46:

(Start: 5 @34075 has 156 MA's), (21, 33931), (25, 33892), (27, 33847), (28, 33838), (29, 33829), (33, 33802), (40, 33763), (50, 33694), (56, 33667), (61, 33631), (63, 33586),

Gene: Jemerald_46 Start: 33734, Stop: 33141, Start Num: 5

Candidate Starts for Jemerald_46:

(Start: 5 @33734 has 156 MA's), (21, 33590), (24, 33554), (25, 33551), (28, 33497), (29, 33488), (31, 33470), (33, 33461), (48, 33383), (53, 33356), (59, 33314), (63, 33260), (64, 33257), (69, 33218),

Gene: Jenos_50 Start: 35192, Stop: 34611, Start Num: 5

Candidate Starts for Jenos_50:

(Start: 5 @35192 has 156 MA's), (21, 35048), (24, 35012), (25, 35009), (26, 34994), (28, 34955), (29, 34946), (31, 34928), (45, 34868), (58, 34787), (59, 34775), (76, 34643),

Gene: Jerbirus_48 Start: 34075, Stop: 33476, Start Num: 5

Candidate Starts for Jerbirus_48:

(Start: 5 @34075 has 156 MA's), (21, 33931), (27, 33847), (28, 33838), (29, 33829), (33, 33802), (40, 33763), (50, 33694), (56, 33667), (61, 33631), (63, 33586),

Gene: JeriBeth_48 Start: 33938, Stop: 33339, Start Num: 5

Candidate Starts for JeriBeth_48:

(Start: 5 @33938 has 156 MA's), (21, 33794), (25, 33755), (27, 33710), (28, 33701), (29, 33692), (33, 33665), (40, 33626), (50, 33557), (56, 33530), (61, 33494), (63, 33449),

Gene: Juanyo_44 Start: 32758, Stop: 32180, Start Num: 4

Candidate Starts for Juanyo_44:

(Start: 4 @32758 has 1 MA's), (14, 32647), (24, 32578), (26, 32560), (29, 32512), (30, 32497), (31, 32494), (44, 32443), (52, 32395), (61, 32338),

Gene: Juicer_46 Start: 33734, Stop: 33141, Start Num: 5

Candidate Starts for Juicer_46:

(Start: 5 @33734 has 156 MA's), (21, 33590), (24, 33554), (25, 33551), (28, 33497), (29, 33488), (31, 33470), (33, 33461), (48, 33383), (53, 33356), (59, 33314), (63, 33260), (64, 33257), (69, 33218),

Gene: Kale_46 Start: 34087, Stop: 33488, Start Num: 5

Candidate Starts for Kale_46:

(Start: 5 @34087 has 156 MA's), (21, 33943), (25, 33904), (27, 33859), (28, 33850), (29, 33841), (33, 33814), (40, 33775), (50, 33706), (56, 33679), (61, 33643), (63, 33598),

Gene: KannH_46 Start: 34075, Stop: 33476, Start Num: 5

Candidate Starts for KannH_46:

(Start: 5 @34075 has 156 MA's), (21, 33931), (27, 33847), (28, 33838), (29, 33829), (33, 33802), (40, 33763), (50, 33694), (56, 33667), (61, 33631), (63, 33586),

Gene: KatChan_46 Start: 32679, Stop: 32086, Start Num: 5

Candidate Starts for KatChan_46:

(Start: 5 @32679 has 156 MA's), (9, 32610), (17, 32562), (19, 32556), (24, 32499), (28, 32442), (29, 32433), (33, 32406), (46, 32346), (48, 32328), (53, 32301), (59, 32259), (62, 32244), (69, 32163),

Gene: Kauala_44 Start: 33491, Stop: 32904, Start Num: 5

Candidate Starts for Kauala_44:

(Start: 5 @33491 has 156 MA's), (14, 33380), (24, 33311), (26, 33293), (27, 33263), (28, 33254), (29, 33245), (31, 33227), (47, 33152), (53, 33116), (59, 33074), (60, 33068), (64, 33014), (67, 32996), (68, 32978), (72, 32963),

Gene: KingJulien_47 Start: 34223, Stop: 33624, Start Num: 5

Candidate Starts for KingJulien_47:

(Start: 5 @34223 has 156 MA's), (11, 34130), (21, 34079), (28, 33986), (29, 33977), (47, 33866), (50, 33842), (56, 33815), (60, 33782), (66, 33725), (73, 33683),

Gene: Klimt_47 Start: 34103, Stop: 33504, Start Num: 5

Candidate Starts for Klimt_47:

(Start: 5 @34103 has 156 MA's), (21, 33959), (27, 33875), (28, 33866), (29, 33857), (33, 33830), (40, 33791), (50, 33722), (56, 33695), (61, 33659), (63, 33614),

Gene: Knox_47 Start: 34369, Stop: 33788, Start Num: 5

Candidate Starts for Knox_47:

(Start: 5 @34369 has 156 MA's), (21, 34225), (23, 34198), (24, 34189), (25, 34186), (26, 34171), (28, 34132), (29, 34123), (33, 34096), (47, 34030), (59, 33952), (65, 33895), (77, 33817),

Gene: Koji_44 Start: 33493, Stop: 32906, Start Num: 5

Candidate Starts for Koji_44:

(Start: 5 @33493 has 156 MA's), (14, 33382), (24, 33313), (27, 33265), (28, 33256), (29, 33247), (47, 33154), (53, 33118), (64, 33016), (68, 32980),

Gene: Kurt1_47 Start: 34365, Stop: 33784, Start Num: 5

Candidate Starts for Kurt1_47:

(Start: 5 @34365 has 156 MA's), (21, 34221), (23, 34194), (24, 34185), (25, 34182), (26, 34167), (28, 34128), (29, 34119), (33, 34092), (47, 34026), (59, 33948), (65, 33891), (77, 33813),

Gene: Leafus_47 Start: 34486, Stop: 33887, Start Num: 5

Candidate Starts for Leafus_47:

(Start: 5 @34486 has 156 MA's), (21, 34342), (28, 34249), (29, 34240), (47, 34129), (56, 34078), (60, 34045), (66, 33988), (73, 33946),

Gene: Librie_45 Start: 31777, Stop: 31184, Start Num: 5

Candidate Starts for Librie_45:

(Start: 5 @31777 has 156 MA's), (17, 31663), (24, 31597), (25, 31594), (28, 31540), (29, 31531), (33, 31504), (36, 31489), (48, 31423), (59, 31354), (69, 31258), (70, 31255),

Gene: LilTerminator_45 Start: 31799, Stop: 31206, Start Num: 5

Candidate Starts for LilTerminator_45:

(Start: 5 @31799 has 156 MA's), (17, 31685), (24, 31619), (25, 31616), (28, 31562), (29, 31553), (33, 31526), (36, 31511), (48, 31445), (59, 31376), (69, 31280), (70, 31277),

Gene: Lovelyunicorn_47 Start: 34370, Stop: 33789, Start Num: 5

Candidate Starts for Lovelyunicorn_47:

(Start: 5 @34370 has 156 MA's), (21, 34226), (23, 34199), (24, 34190), (25, 34187), (26, 34172), (28, 34133), (29, 34124), (33, 34097), (47, 34031), (59, 33953), (65, 33896), (77, 33818),

Gene: Lucky3_44 Start: 33208, Stop: 32621, Start Num: 5

Candidate Starts for Lucky3_44:

(Start: 5 @33208 has 156 MA's), (14, 33097), (24, 33028), (27, 32980), (28, 32971), (29, 32962), (31, 32944), (47, 32869), (53, 32833), (59, 32791), (60, 32785), (62, 32776), (64, 32731), (68, 32695),

Gene: Ludgate_47 Start: 34368, Stop: 33787, Start Num: 5

Candidate Starts for Ludgate_47:

(Start: 5 @34368 has 156 MA's), (21, 34224), (23, 34197), (24, 34188), (25, 34185), (26, 34170), (28, 34131), (29, 34122), (33, 34095), (47, 34029), (59, 33951), (65, 33894), (77, 33816),

Gene: Luna18_46 Start: 32679, Stop: 32086, Start Num: 5

Candidate Starts for Luna18_46:

(Start: 5 @32679 has 156 MA's), (9, 32610), (17, 32562), (19, 32556), (24, 32499), (28, 32442), (29, 32433), (33, 32406), (46, 32346), (48, 32328), (53, 32301), (59, 32259), (62, 32244), (69, 32163),

Gene: MCubed_45 Start: 33163, Stop: 32585, Start Num: 5

Candidate Starts for MCubed_45:

(Start: 5 @33163 has 156 MA's), (13, 33055), (14, 33052), (24, 32983), (25, 32980), (26, 32965), (28, 32926), (29, 32917), (31, 32899), (44, 32848), (52, 32800), (60, 32746), (61, 32743),

Gene: MaeLinda_47 Start: 34369, Stop: 33788, Start Num: 5

Candidate Starts for MaeLinda_47:

(Start: 5 @34369 has 156 MA's), (21, 34225), (23, 34198), (24, 34189), (25, 34186), (26, 34171), (28, 34132), (29, 34123), (33, 34096), (47, 34030), (59, 33952), (65, 33895), (77, 33817),

Gene: ManRay_46 Start: 34085, Stop: 33486, Start Num: 5

Candidate Starts for ManRay_46:

(Start: 5 @34085 has 156 MA's), (21, 33941), (25, 33902), (27, 33857), (28, 33848), (29, 33839), (33, 33812), (40, 33773), (50, 33704), (56, 33677), (61, 33641), (63, 33596),

Gene: Mandalorian_44 Start: 32861, Stop: 32259, Start Num: 5

Candidate Starts for Mandalorian_44:

(3, 32942), (Start: 5 @32861 has 156 MA's), (24, 32681), (27, 32633), (29, 32615), (40, 32549), (55, 32462), (56, 32453), (61, 32417),

Gene: Martin_48 Start: 34374, Stop: 33793, Start Num: 5

Candidate Starts for Martin_48:

(Start: 5 @34374 has 156 MA's), (21, 34230), (23, 34203), (24, 34194), (25, 34191), (26, 34176), (28, 34137), (29, 34128), (33, 34101), (47, 34035), (59, 33957), (65, 33900), (77, 33822),

Gene: McGalleon_49 Start: 35352, Stop: 34771, Start Num: 5

Candidate Starts for McGalleon_49:

(Start: 5 @35352 has 156 MA's), (22, 35205), (24, 35172), (25, 35169), (26, 35154), (28, 35115), (29, 35106), (33, 35079), (39, 35061), (47, 35013), (59, 34935), (76, 34803),

Gene: Mercedes_40 Start: 31768, Stop: 31154, Start Num: 5

Candidate Starts for Mercedes_40:

(Start: 5 @31768 has 156 MA's), (12, 31669), (15, 31654), (21, 31609), (24, 31570), (25, 31567), (28, 31513), (29, 31504), (33, 31477), (35, 31465), (36, 31462), (48, 31396), (53, 31369), (55, 31363), (56,

31354), (58, 31339), (59, 31327), (61, 31318), (62, 31312), (69, 31231), (72, 31213),

Gene: MillyPhilly_47 Start: 34362, Stop: 33781, Start Num: 5

Candidate Starts for MillyPhilly_47:

(Start: 5 @34362 has 156 MA's), (21, 34218), (23, 34191), (24, 34182), (25, 34179), (26, 34164), (28, 34125), (29, 34116), (33, 34089), (47, 34023), (59, 33945), (65, 33888), (77, 33810),

Gene: MonChoix_44 Start: 33920, Stop: 33336, Start Num: 5

Candidate Starts for MonChoix_44:

(Start: 5 @33920 has 156 MA's), (8, 33863), (24, 33740), (25, 33737), (26, 33722), (28, 33683), (29, 33674), (33, 33647), (56, 33530), (59, 33503),

Gene: Morrigan_46 Start: 32631, Stop: 32038, Start Num: 5

Candidate Starts for Morrigan_46:

(Start: 5 @32631 has 156 MA's), (19, 32508), (24, 32451), (25, 32448), (28, 32394), (29, 32385), (33, 32358), (46, 32298), (48, 32280), (53, 32253), (56, 32238), (61, 32202), (62, 32196), (69, 32115), (72, 32097), (74, 32079),

Gene: MrWorldwide_47 Start: 34372, Stop: 33791, Start Num: 5

Candidate Starts for MrWorldwide_47:

(Start: 5 @34372 has 156 MA's), (21, 34228), (23, 34201), (24, 34192), (25, 34189), (26, 34174), (28, 34135), (29, 34126), (33, 34099), (47, 34033), (59, 33955), (65, 33898), (77, 33820),

Gene: Nagem_47 Start: 34365, Stop: 33784, Start Num: 5

Candidate Starts for Nagem_47:

(Start: 5 @34365 has 156 MA's), (21, 34221), (23, 34194), (24, 34185), (25, 34182), (26, 34167), (28, 34128), (29, 34119), (33, 34092), (47, 34026), (59, 33948), (65, 33891), (77, 33813),

Gene: Nattles_46 Start: 34072, Stop: 33473, Start Num: 5

Candidate Starts for Nattles_46:

(Start: 5 @34072 has 156 MA's), (21, 33928), (25, 33889), (27, 33844), (28, 33835), (29, 33826), (33, 33799), (40, 33760), (50, 33691), (56, 33664), (61, 33628), (63, 33583),

Gene: Nebulous_43 Start: 34682, Stop: 34092, Start Num: 5

Candidate Starts for Nebulous_43:

(Start: 5 @34682 has 156 MA's), (7, 34655), (12, 34583), (18, 34559), (20, 34541), (24, 34502), (28, 34445), (29, 34436), (31, 34418), (32, 34415), (42, 34370), (43, 34367), (47, 34346), (48, 34337), (53, 34310), (61, 34259), (63, 34214),

Gene: Neferthema_46 Start: 34023, Stop: 33433, Start Num: 5

Candidate Starts for Neferthema_46:

(Start: 5 @34023 has 156 MA's), (7, 33996), (14, 33912), (24, 33843), (28, 33786), (29, 33777), (43, 33708), (47, 33687), (48, 33678), (53, 33651), (58, 33621), (60, 33603), (63, 33555),

Gene: NickSell_49 Start: 34375, Stop: 33794, Start Num: 5

Candidate Starts for NickSell_49:

(Start: 5 @34375 has 156 MA's), (21, 34231), (23, 34204), (24, 34195), (25, 34192), (26, 34177), (28, 34138), (29, 34129), (33, 34102), (47, 34036), (59, 33958), (65, 33901), (77, 33823),

Gene: Nucci_44 Start: 32844, Stop: 32242, Start Num: 5

Candidate Starts for Nucci_44:

(3, 32925), (Start: 5 @32844 has 156 MA's), (24, 32664), (27, 32616), (29, 32598), (40, 32532), (55, 32445), (56, 32436), (61, 32400),

Gene: Oats_46 Start: 34085, Stop: 33486, Start Num: 5

Candidate Starts for Oats_46:

(Start: 5 @34085 has 156 MA's), (21, 33941), (25, 33902), (27, 33857), (28, 33848), (29, 33839), (33, 33812), (40, 33773), (50, 33704), (56, 33677), (61, 33641), (63, 33596),

Gene: OldNelly_48 Start: 34371, Stop: 33790, Start Num: 5

Candidate Starts for OldNelly_48:

(Start: 5 @34371 has 156 MA's), (21, 34227), (23, 34200), (24, 34191), (25, 34188), (26, 34173), (28, 34134), (29, 34125), (33, 34098), (47, 34032), (59, 33954), (65, 33897), (77, 33819),

Gene: Oxtober96_48 Start: 34370, Stop: 33789, Start Num: 5

Candidate Starts for Oxtober96_48:

(Start: 5 @34370 has 156 MA's), (21, 34226), (23, 34199), (24, 34190), (25, 34187), (26, 34172), (28, 34133), (29, 34124), (33, 34097), (47, 34031), (59, 33953), (65, 33896), (77, 33818),

Gene: Pajaza_44 Start: 32779, Stop: 32198, Start Num: 5

Candidate Starts for Pajaza_44:

(2, 33034), (Start: 5 @32779 has 156 MA's), (10, 32707), (13, 32671), (14, 32668), (24, 32599), (26, 32581), (27, 32551), (28, 32542), (29, 32533), (31, 32515), (33, 32506), (47, 32440), (49, 32425), (61, 32353),

Gene: Papafritta_46 Start: 34096, Stop: 33497, Start Num: 5

Candidate Starts for Papafritta_46:

(Start: 5 @34096 has 156 MA's), (21, 33952), (27, 33868), (28, 33859), (29, 33850), (33, 33823), (40, 33784), (50, 33715), (56, 33688), (61, 33652), (63, 33607),

Gene: ParleG_47 Start: 34372, Stop: 33791, Start Num: 5

Candidate Starts for ParleG_47:

(Start: 5 @34372 has 156 MA's), (21, 34228), (23, 34201), (24, 34192), (25, 34189), (26, 34174), (28, 34135), (29, 34126), (33, 34099), (47, 34033), (59, 33955), (65, 33898), (77, 33820),

Gene: Peep_47 Start: 34357, Stop: 33776, Start Num: 5

Candidate Starts for Peep_47:

(Start: 5 @34357 has 156 MA's), (21, 34213), (23, 34186), (24, 34177), (25, 34174), (26, 34159), (28, 34120), (29, 34111), (33, 34084), (47, 34018), (59, 33940), (65, 33883), (77, 33805),

Gene: Peppino_47 Start: 34332, Stop: 33733, Start Num: 5

Candidate Starts for Peppino_47:

(Start: 5 @34332 has 156 MA's), (21, 34188), (28, 34095), (29, 34086), (47, 33975), (50, 33951), (56, 33924), (60, 33891), (66, 33834), (73, 33792),

Gene: Pherbot_44 Start: 33109, Stop: 32522, Start Num: 5

Candidate Starts for Pherbot_44:

(Start: 5 @33109 has 156 MA's), (14, 32998), (24, 32929), (27, 32881), (28, 32872), (29, 32863), (31, 32845), (47, 32770), (53, 32734), (64, 32632), (68, 32596),

Gene: Pherferi_47 Start: 34365, Stop: 33784, Start Num: 5

Candidate Starts for Pherferi_47:

(Start: 5 @34365 has 156 MA's), (21, 34221), (23, 34194), (24, 34185), (25, 34182), (26, 34167), (28, 34128), (29, 34119), (33, 34092), (47, 34026), (59, 33948), (65, 33891), (77, 33813),

Gene: Phiderman_49 Start: 34362, Stop: 33781, Start Num: 5

Candidate Starts for Phiderman_49:

(Start: 5 @34362 has 156 MA's), (21, 34218), (23, 34191), (24, 34182), (25, 34179), (26, 34164), (28, 34125), (29, 34116), (33, 34089), (47, 34023), (59, 33945), (65, 33888), (77, 33810),

Gene: Phireproof_47 Start: 34371, Stop: 33790, Start Num: 5

Candidate Starts for Phireproof_47:

(Start: 5 @34371 has 156 MA's), (21, 34227), (23, 34200), (24, 34191), (25, 34188), (26, 34173), (28, 34134), (29, 34125), (33, 34098), (47, 34032), (59, 33954), (65, 33897), (77, 33819),

Gene: PhredFlintston_47 Start: 34365, Stop: 33784, Start Num: 5

Candidate Starts for PhredFlintston_47:

(Start: 5 @34365 has 156 MA's), (21, 34221), (23, 34194), (24, 34185), (25, 34182), (26, 34167), (28, 34128), (29, 34119), (33, 34092), (39, 34074), (47, 34026), (59, 33948), (65, 33891), (77, 33813),

Gene: Phriends_47 Start: 34371, Stop: 33790, Start Num: 5

Candidate Starts for Phriends_47:

(Start: 5 @34371 has 156 MA's), (21, 34227), (23, 34200), (24, 34191), (25, 34188), (26, 34173), (28, 34134), (29, 34125), (33, 34098), (47, 34032), (59, 33954), (65, 33897), (77, 33819),

Gene: Pikmin_44 Start: 32779, Stop: 32198, Start Num: 5

Candidate Starts for Pikmin_44:

(2, 33034), (Start: 5 @32779 has 156 MA's), (10, 32707), (13, 32671), (14, 32668), (24, 32599), (26, 32581), (27, 32551), (28, 32542), (29, 32533), (30, 32518), (31, 32515), (33, 32506), (47, 32440), (49, 32425), (61, 32353),

Gene: Pocket_46 Start: 34112, Stop: 33513, Start Num: 5

Candidate Starts for Pocket_46:

(Start: 5 @34112 has 156 MA's), (21, 33968), (25, 33929), (27, 33884), (28, 33875), (29, 33866), (33, 33839), (40, 33800), (50, 33731), (56, 33704), (61, 33668), (63, 33623),

Gene: PrincePhergus_44 Start: 33125, Stop: 32538, Start Num: 5

Candidate Starts for PrincePhergus_44:

(Start: 5 @33125 has 156 MA's), (14, 33014), (24, 32945), (27, 32897), (28, 32888), (29, 32879), (47, 32786), (53, 32750), (64, 32648), (68, 32612),

Gene: PuppyEggo_47 Start: 34372, Stop: 33791, Start Num: 5

Candidate Starts for PuppyEggo_47:

(Start: 5 @34372 has 156 MA's), (21, 34228), (23, 34201), (24, 34192), (25, 34189), (26, 34174), (28, 34135), (29, 34126), (33, 34099), (47, 34033), (59, 33955), (65, 33898), (77, 33820),

Gene: QuadZero_45 Start: 31944, Stop: 31351, Start Num: 5

Candidate Starts for QuadZero_45:

(Start: 5 @31944 has 156 MA's), (17, 31830), (24, 31764), (25, 31761), (28, 31707), (29, 31698), (33, 31671), (36, 31656), (48, 31590), (59, 31521), (69, 31425), (70, 31422),

Gene: Quartz_45 Start: 32974, Stop: 32372, Start Num: 5

Candidate Starts for Quartz_45:

(3, 33055), (Start: 5 @32974 has 156 MA's), (24, 32794), (27, 32746), (29, 32728), (55, 32575), (56, 32566), (61, 32530),

Gene: Raccoon_47 Start: 34289, Stop: 33690, Start Num: 5

Candidate Starts for Raccoon_47:

(Start: 5 @34289 has 156 MA's), (11, 34196), (21, 34145), (28, 34052), (29, 34043), (47, 33932), (50, 33908), (56, 33881), (60, 33848), (66, 33791), (73, 33749),

Gene: Rapheph_47 Start: 34365, Stop: 33784, Start Num: 5

Candidate Starts for Rapheph_47:

(Start: 5 @34365 has 156 MA's), (21, 34221), (23, 34194), (24, 34185), (25, 34182), (26, 34167), (28, 34128), (29, 34119), (33, 34092), (47, 34026), (59, 33948), (65, 33891), (77, 33813),

Gene: Raptor_47 Start: 34372, Stop: 33791, Start Num: 5

Candidate Starts for Raptor_47:

(Start: 5 @34372 has 156 MA's), (21, 34228), (23, 34201), (24, 34192), (25, 34189), (26, 34174), (28, 34135), (29, 34126), (33, 34099), (47, 34033), (59, 33955), (65, 33898), (77, 33820),

Gene: Redfield_47 Start: 34340, Stop: 33741, Start Num: 5

Candidate Starts for Redfield_47:

(Start: 5 @34340 has 156 MA's), (21, 34196), (28, 34103), (29, 34094), (47, 33983), (50, 33959), (56, 33932), (60, 33899), (66, 33842), (73, 33800),

Gene: Renzie_47 Start: 34360, Stop: 33779, Start Num: 5

Candidate Starts for Renzie_47:

(Start: 5 @34360 has 156 MA's), (21, 34216), (23, 34189), (24, 34180), (25, 34177), (26, 34162), (28, 34123), (29, 34114), (33, 34087), (47, 34021), (59, 33943), (65, 33886), (77, 33808),

Gene: Riyhil_47 Start: 34375, Stop: 33794, Start Num: 5

Candidate Starts for Riyhil_47:

(Start: 5 @34375 has 156 MA's), (21, 34231), (23, 34204), (24, 34195), (25, 34192), (26, 34177), (28, 34138), (29, 34129), (33, 34102), (47, 34036), (59, 33958), (65, 33901), (77, 33823),

Gene: Robinson_47 Start: 34363, Stop: 33782, Start Num: 5

Candidate Starts for Robinson_47:

(Start: 5 @34363 has 156 MA's), (21, 34219), (23, 34192), (24, 34183), (25, 34180), (26, 34165), (28, 34126), (29, 34117), (33, 34090), (47, 34024), (59, 33946), (65, 33889), (77, 33811),

Gene: Rog141_48 Start: 34075, Stop: 33476, Start Num: 5

Candidate Starts for Rog141_48:

(Start: 5 @34075 has 156 MA's), (21, 33931), (27, 33847), (28, 33838), (29, 33829), (33, 33802), (40, 33763), (50, 33694), (56, 33667), (61, 33631), (63, 33586),

Gene: SJay_47 Start: 34366, Stop: 33785, Start Num: 5

Candidate Starts for SJay_47:

(Start: 5 @34366 has 156 MA's), (21, 34222), (23, 34195), (24, 34186), (25, 34183), (26, 34168), (28, 34129), (29, 34120), (33, 34093), (47, 34027), (59, 33949), (65, 33892), (77, 33814),

Gene: Sansa_44 Start: 33368, Stop: 32790, Start Num: 5

Candidate Starts for Sansa_44:

(Start: 5 @33368 has 156 MA's), (13, 33260), (14, 33257), (20, 33227), (24, 33188), (25, 33185), (26, 33170), (28, 33131), (29, 33122), (30, 33107), (31, 33104), (44, 33053), (52, 33005), (60, 32951), (61, 32948),

Gene: Saratos_45 Start: 33123, Stop: 32545, Start Num: 5

Candidate Starts for Saratos_45:

(Start: 5 @33123 has 156 MA's), (14, 33012), (24, 32943), (26, 32925), (27, 32895), (29, 32877), (31, 32859), (52, 32760), (60, 32706), (61, 32703), (62, 32697), (72, 32604),

Gene: Schimmels22_42 Start: 32187, Stop: 31597, Start Num: 5

Candidate Starts for Schimmels22_42:

(Start: 5 @32187 has 156 MA's), (7, 32160), (16, 32070), (18, 32064), (24, 32007), (25, 32004), (28, 31950), (29, 31941), (31, 31923), (42, 31875), (43, 31872), (48, 31842), (53, 31815), (59, 31773), (62, 31758), (71, 31659),

Gene: Schnapsidee_47 Start: 34347, Stop: 33748, Start Num: 5

Candidate Starts for Schnapsidee_47:

(Start: 5 @34347 has 156 MA's), (21, 34203), (28, 34110), (29, 34101), (47, 33990), (50, 33966), (56, 33939), (60, 33906), (66, 33849), (73, 33807),

Gene: Schubert_44 Start: 32993, Stop: 32415, Start Num: 5

Candidate Starts for Schubert_44:

(Start: 5 @32993 has 156 MA's), (12, 32894), (21, 32855), (24, 32819), (25, 32816), (26, 32801), (27, 32771), (28, 32762), (29, 32753), (31, 32735), (49, 32645), (53, 32624), (54, 32621), (55, 32618), (56, 32609), (57, 32606), (63, 32528), (67, 32507), (72, 32474), (75, 32453), (76, 32447),

Gene: Sedgewig_46 Start: 34073, Stop: 33474, Start Num: 5

Candidate Starts for Sedgewig_46:

(Start: 5 @34073 has 156 MA's), (21, 33929), (27, 33845), (28, 33836), (29, 33827), (33, 33800), (40, 33761), (50, 33692), (56, 33665), (61, 33629), (63, 33584),

Gene: ShaiHulud_48 Start: 34381, Stop: 33800, Start Num: 5

Candidate Starts for ShaiHulud_48:

(Start: 5 @34381 has 156 MA's), (21, 34237), (23, 34210), (24, 34201), (25, 34198), (26, 34183), (28, 34144), (29, 34135), (33, 34108), (47, 34042), (59, 33964), (65, 33907), (77, 33829),

Gene: Shamu_46 Start: 33302, Stop: 32724, Start Num: 5

Candidate Starts for Shamu_46:

(1, 33692), (Start: 5 @33302 has 156 MA's), (14, 33191), (24, 33122), (26, 33104), (27, 33074), (29, 33056), (31, 33038), (52, 32939), (60, 32885), (61, 32882), (62, 32876), (72, 32783),

Gene: Shee_47 Start: 34362, Stop: 33781, Start Num: 5

Candidate Starts for Shee_47:

(Start: 5 @34362 has 156 MA's), (21, 34218), (23, 34191), (24, 34182), (25, 34179), (26, 34164), (28, 34125), (29, 34116), (33, 34089), (47, 34023), (59, 33945), (65, 33888), (77, 33810),

Gene: Sinatra_45 Start: 33120, Stop: 32533, Start Num: 5

Candidate Starts for Sinatra_45:

(Start: 5 @33120 has 156 MA's), (14, 33009), (24, 32940), (27, 32892), (28, 32883), (29, 32874), (31, 32856), (47, 32781), (53, 32745), (64, 32643), (68, 32607),

Gene: SirVictor_45 Start: 33193, Stop: 32606, Start Num: 5

Candidate Starts for SirVictor_45:

(Start: 5 @33193 has 156 MA's), (14, 33082), (24, 33013), (27, 32965), (28, 32956), (29, 32947), (31, 32929), (47, 32854), (53, 32818), (59, 32776), (60, 32770), (62, 32761), (64, 32716), (68, 32680),

Gene: SoilGremlin_48 Start: 34368, Stop: 33787, Start Num: 5

Candidate Starts for SoilGremlin_48:

(Start: 5 @34368 has 156 MA's), (21, 34224), (23, 34197), (24, 34188), (25, 34185), (26, 34170), (28, 34131), (29, 34122), (33, 34095), (47, 34029), (59, 33951), (65, 33894), (77, 33816),

Gene: SonOfLevi_47 Start: 34103, Stop: 33504, Start Num: 5

Candidate Starts for SonOfLevi_47:

(Start: 5 @34103 has 156 MA's), (21, 33959), (27, 33875), (28, 33866), (29, 33857), (33, 33830), (40, 33791), (50, 33722), (56, 33695), (61, 33659), (63, 33614),

Gene: Stanktossa_47 Start: 34365, Stop: 33784, Start Num: 5

Candidate Starts for Stanktossa_47:

(Start: 5 @34365 has 156 MA's), (21, 34221), (23, 34194), (24, 34185), (25, 34182), (26, 34167), (28, 34128), (29, 34119), (33, 34092), (47, 34026), (59, 33948), (65, 33891), (77, 33813),

Gene: StingRay_46 Start: 34088, Stop: 33489, Start Num: 5

Candidate Starts for StingRay_46:

(Start: 5 @34088 has 156 MA's), (21, 33944), (25, 33905), (27, 33860), (28, 33851), (29, 33842), (33, 33815), (40, 33776), (50, 33707), (56, 33680), (61, 33644), (63, 33599),

Gene: StirfryIV_48 Start: 34084, Stop: 33485, Start Num: 5

Candidate Starts for StirfryIV_48:

(Start: 5 @34084 has 156 MA's), (21, 33940), (27, 33856), (28, 33847), (29, 33838), (33, 33811), (40, 33772), (50, 33703), (56, 33676), (61, 33640), (63, 33595),

Gene: Stormbreaker8_46 Start: 34223, Stop: 33624, Start Num: 5

Candidate Starts for Stormbreaker8_46:

(Start: 5 @34223 has 156 MA's), (11, 34130), (21, 34079), (28, 33986), (29, 33977), (47, 33866), (50, 33842), (56, 33815), (60, 33782), (66, 33725), (73, 33683),

Gene: Strathdee_47 Start: 34371, Stop: 33790, Start Num: 5

Candidate Starts for Strathdee_47:

(Start: 5 @34371 has 156 MA's), (21, 34227), (23, 34200), (24, 34191), (25, 34188), (26, 34173), (28, 34134), (29, 34125), (33, 34098), (47, 34032), (59, 33954), (65, 33897), (77, 33819),

Gene: Superfresh_47 Start: 34360, Stop: 33779, Start Num: 5

Candidate Starts for Superfresh_47:

(Start: 5 @34360 has 156 MA's), (21, 34216), (23, 34189), (24, 34180), (25, 34177), (26, 34162), (28, 34123), (29, 34114), (33, 34087), (47, 34021), (59, 33943), (65, 33886), (77, 33808),

Gene: TatarkaPM_47 Start: 34375, Stop: 33794, Start Num: 5

Candidate Starts for TatarkaPM_47:

(Start: 5 @34375 has 156 MA's), (21, 34231), (23, 34204), (24, 34195), (25, 34192), (26, 34177), (28, 34138), (29, 34129), (33, 34102), (47, 34036), (59, 33958), (65, 33901), (77, 33823),

Gene: Teagan_47 Start: 34365, Stop: 33784, Start Num: 5

Candidate Starts for Teagan_47:

(Start: 5 @34365 has 156 MA's), (21, 34221), (23, 34194), (24, 34185), (25, 34182), (26, 34167), (28, 34128), (29, 34119), (33, 34092), (47, 34026), (59, 33948), (65, 33891), (77, 33813),

Gene: TeddyBear_46 Start: 34085, Stop: 33486, Start Num: 5

Candidate Starts for TeddyBear_46:

(Start: 5 @34085 has 156 MA's), (21, 33941), (25, 33902), (27, 33857), (28, 33848), (29, 33839), (33, 33812), (40, 33773), (50, 33704), (56, 33677), (61, 33641), (63, 33596),

Gene: Tenda_46 Start: 34083, Stop: 33484, Start Num: 5

Candidate Starts for Tenda_46:

(Start: 5 @34083 has 156 MA's), (21, 33939), (25, 33900), (27, 33855), (28, 33846), (29, 33837), (33, 33810), (40, 33771), (50, 33702), (56, 33675), (61, 33639), (63, 33594),

Gene: Thompsone_47 Start: 34372, Stop: 33791, Start Num: 5

Candidate Starts for Thompsone_47:

(Start: 5 @34372 has 156 MA's), (21, 34228), (23, 34201), (24, 34192), (25, 34189), (26, 34174), (28, 34135), (29, 34126), (33, 34099), (47, 34033), (59, 33955), (65, 33898), (77, 33820),

Gene: Thorongil_47 Start: 33886, Stop: 33305, Start Num: 5

Candidate Starts for Thorongil_47:

(Start: 5 @33886 has 156 MA's), (21, 33742), (23, 33715), (24, 33706), (25, 33703), (26, 33688), (28, 33649), (29, 33640), (33, 33613), (47, 33547), (59, 33469), (65, 33412), (77, 33334),

Gene: TinSulphur_48 Start: 34371, Stop: 33790, Start Num: 5

Candidate Starts for TinSulphur_48:

(Start: 5 @34371 has 156 MA's), (21, 34227), (23, 34200), (24, 34191), (25, 34188), (26, 34173), (28, 34134), (29, 34125), (33, 34098), (47, 34032), (59, 33954), (65, 33897), (77, 33819),

Gene: Tinyman4_42 Start: 31888, Stop: 31298, Start Num: 5

Candidate Starts for Tinyman4_42:

(Start: 5 @31888 has 156 MA's), (7, 31861), (16, 31771), (18, 31765), (24, 31708), (25, 31705), (28, 31651), (29, 31642), (31, 31624), (42, 31576), (43, 31573), (48, 31543), (53, 31516), (59, 31474), (62, 31459), (71, 31360),

Gene: Velene_47 Start: 34370, Stop: 33789, Start Num: 5

Candidate Starts for Velene_47:

(Start: 5 @34370 has 156 MA's), (21, 34226), (23, 34199), (24, 34190), (25, 34187), (26, 34172), (28, 34133), (29, 34124), (33, 34097), (47, 34031), (59, 33953), (65, 33896), (77, 33818),

Gene: Vispistious_48 Start: 34372, Stop: 33791, Start Num: 5

Candidate Starts for Vispistious_48:

(Start: 5 @34372 has 156 MA's), (21, 34228), (23, 34201), (24, 34192), (25, 34189), (26, 34174), (28, 34135), (29, 34126), (33, 34099), (47, 34033), (59, 33955), (65, 33898), (77, 33820),

Gene: WestPM_41 Start: 31954, Stop: 31364, Start Num: 5

Candidate Starts for WestPM_41:

(Start: 5 @31954 has 156 MA's), (7, 31927), (24, 31774), (25, 31771), (28, 31717), (29, 31708), (31, 31690), (42, 31642), (43, 31639), (48, 31609), (53, 31582), (59, 31540), (62, 31525), (72, 31423),

Gene: WildNOut_47 Start: 34368, Stop: 33787, Start Num: 5

Candidate Starts for WildNOut_47:

(Start: 5 @34368 has 156 MA's), (21, 34224), (23, 34197), (24, 34188), (25, 34185), (26, 34170), (28, 34131), (29, 34122), (33, 34095), (47, 34029), (59, 33951), (65, 33894), (77, 33816),

Gene: WilliamStrong_45 Start: 33225, Stop: 32620, Start Num: 5

Candidate Starts for WilliamStrong_45:

(Start: 5 @33225 has 156 MA's), (17, 33108), (19, 33102), (24, 33033), (25, 33030), (28, 32976), (29, 32967), (31, 32949), (33, 32940), (46, 32880), (48, 32862), (53, 32835), (59, 32793), (61, 32784), (64, 32736), (69, 32697), (74, 32661),

Gene: Winzigespinne_46 Start: 34071, Stop: 33472, Start Num: 5

Candidate Starts for Winzigespinne_46:

(Start: 5 @34071 has 156 MA's), (21, 33927), (25, 33888), (27, 33843), (28, 33834), (29, 33825), (33, 33798), (40, 33759), (50, 33690), (56, 33663), (61, 33627), (63, 33582),

Gene: YuuY_45 Start: 33441, Stop: 32839, Start Num: 6

Candidate Starts for YuuY_45:

(Start: 6 @33441 has 1 MA's), (29, 33195), (31, 33177), (37, 33144), (40, 33129), (41, 33120), (47, 33084), (55, 33042), (56, 33033), (59, 33006), (61, 32997), (72, 32898),

Gene: Zada_48 Start: 34341, Stop: 33760, Start Num: 5

Candidate Starts for Zada_48:

(Start: 5 @34341 has 156 MA's), (21, 34197), (23, 34170), (24, 34161), (25, 34158), (26, 34143), (28, 34104), (29, 34095), (33, 34068), (47, 34002), (59, 33924), (65, 33867), (77, 33789),

Gene: Zayuliv_45 Start: 32415, Stop: 31822, Start Num: 5

Candidate Starts for Zayuliv_45:

(Start: 5 @32415 has 156 MA's), (14, 32307), (17, 32301), (24, 32235), (25, 32232), (28, 32178), (29, 32169), (33, 32142), (36, 32127), (48, 32061), (59, 31992), (69, 31896), (70, 31893),

Gene: Zenitsu_45 Start: 33168, Stop: 32590, Start Num: 5

Candidate Starts for Zenitsu_45:

(Start: 5 @33168 has 156 MA's), (13, 33060), (14, 33057), (24, 32988), (25, 32985), (26, 32970), (28, 32931), (29, 32922), (31, 32904), (44, 32853), (52, 32805), (60, 32751), (61, 32748),

Gene: Zepp_45 Start: 31849, Stop: 31256, Start Num: 5

Candidate Starts for Zepp_45:

(Start: 5 @31849 has 156 MA's), (17, 31735), (24, 31669), (25, 31666), (28, 31612), (29, 31603), (33, 31576), (36, 31561), (48, 31495), (59, 31426), (69, 31330), (70, 31327),