

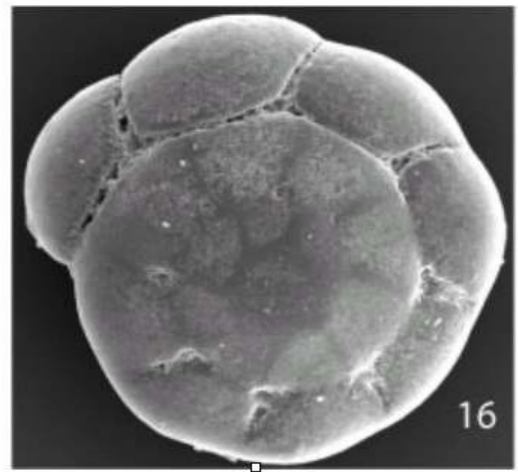
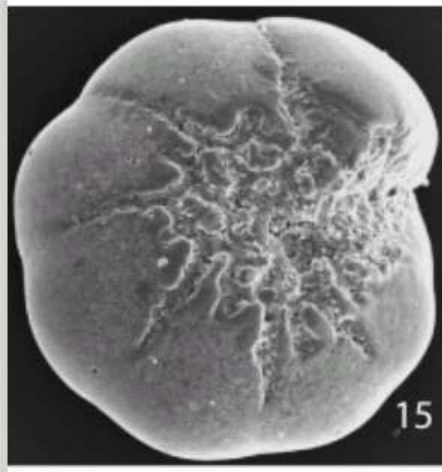
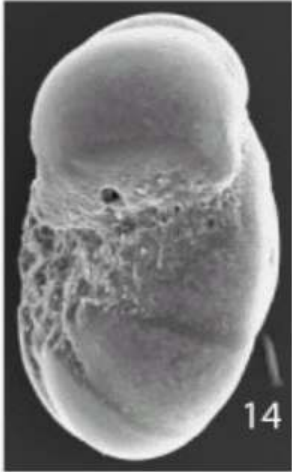
Planche 80 : Super-famille des ROTALIIDEA

Genre *Ammonia*/*Rotalia* ↔ Miocène/ Actuel

= test trochospiralé, de forme lenticulaire biconvexe

Face ventrale involute

Face dorsale évoluée

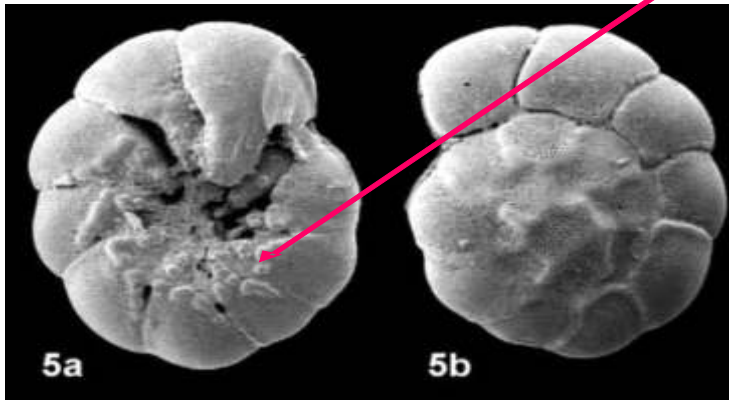


A. falsobeccarii

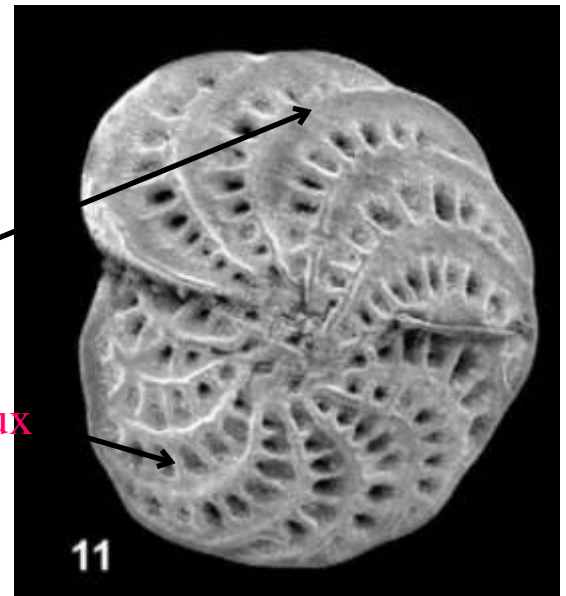
Granules calcaires

au niveau de la zone ombilicale

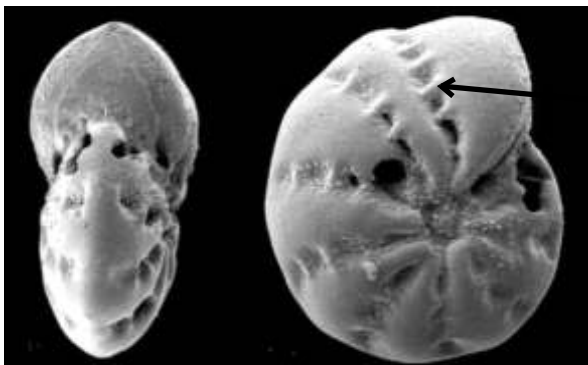
Genre *Ammonia*



Genre *Elphidium*
Miocène/ Actuel



Elphidium macellum



Elphidium articulatum