

# Edson and Hinton Areas

Straddling the Yellowhead Highway midway between Edmonton and Jasper National Park, **Edson** (www.townofedson.ca 780-723-4011) is a full-service community on the edge of foothills in the McLeod River Valley and is a good launching point for trails in the area. Within the town of 8,400 people, an extensive gravel trail system winds through creek valleys and parks, providing popular destinations for wooded walks, runs and bike rides. The town is gradually providing numerous sections of these trails.

Six km south of Edson, **Willmore Park** boasts a 12.75 km loop system through old-growth, mixed-wood forest along the McLeod River, with walking, hiking and mountain biking trails offering a mix of rolling terrain, short hills and intermediate downhill. In good snow years, these trails offer cross-country skiing and snowshoeing opportunities, while a long hill promises exciting tobogganing. The park is also home to abundant wildlife including mule and white-tailed deer, forest birds and squirrels.

The Edson Sno-Seekers Snowmobile Club maintains a registered trail that heads 65 km southwest from the Edson Golf Course staging area to the hamlet of **Robb**, which has a gas station and restaurant. Much of the rolling route is along cutlines and travels through muskeg and forest.

With a population of 10,000, **Hinton** (www.hinton.ca; 1-877-446-8666) is the Gateway to the Rockies, with a multitude of trails within and just outside its boundaries. In town, more than 20 km of walking and cycling trails lead through lush forests, past creeks and lakes and to viewpoints of mountains. The 3 km **Beaver Boardwalk** (www.beaverboardwalk.ca), the longest of its kind in Canada, meanders through beaver habitat and offers great bird and wildlife watching.

The 0.15 km<sup>2</sup> **Hinton Bike Park** (www.bikehinton.com) provides a link to multiple bike trails, each with a technical rating. Hinton is also the starting point for the annual MS Mountain Bike Tour, a highly successful two-day fundraising trail ride.



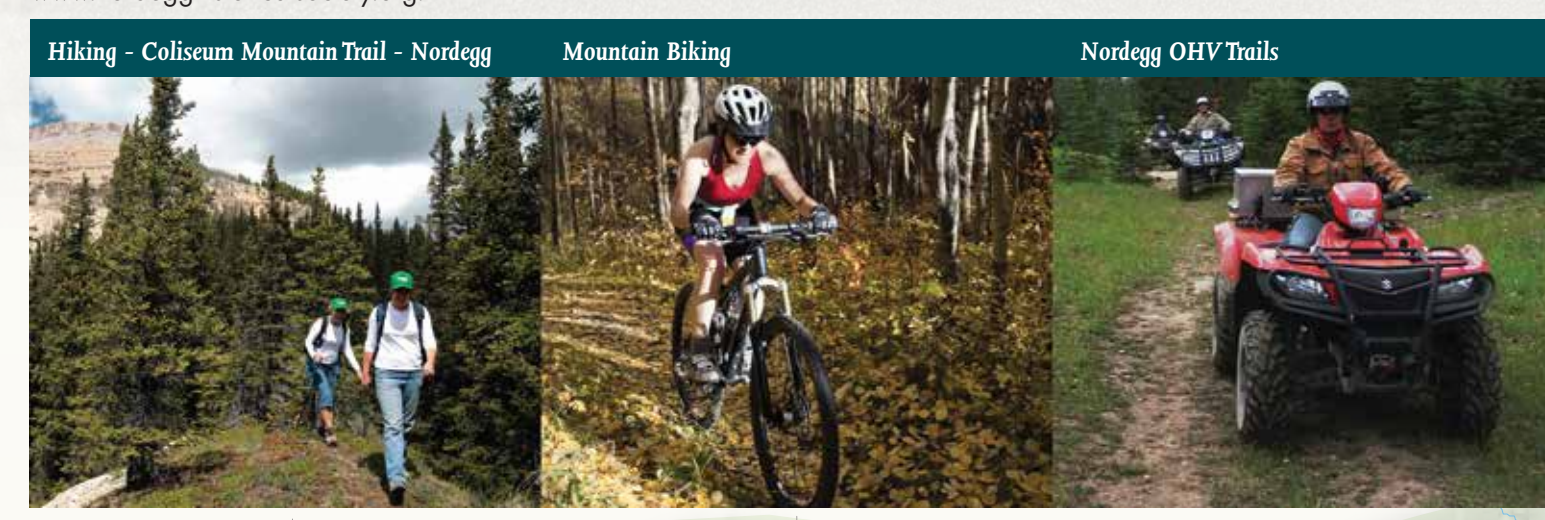
From Hinton, the 5 km **Happy Creek Trail** - named for the "happy" moonshiners who once operated here - winds south through montane forest and past beaver dams - to connect with additional trails ideal for biking and hiking. Southeast of town, the 20 km network of **Cache Poutte Forest Trails** (each about 1.5 km long) offer a variety of challenges to mountain bikers, hikers and horseback riders. For the more ambitious, mixed-use **Bighorn Trail** follows a historic pack route south for 22 km through forested foothills to the Gregg River Valley.

South of Hinton and east of Highway 40, Hinton Wood Products maintains several public trails. From the Gregg Cabin day-use area, the 6 km **Pine Management Trail** (which allows off-highway vehicle use) takes visitors through mature stands of pine and shows regeneration of the forest after fire and logging. To the northeast is the 1 km **McLeod River Silvicultural Interpretive Trail**.

Farther south along the eastern side of Highway 40 are two short trails favoured by area anglers. One is the 1 km **Mary Gregg Lake Trail** and the other, to the south, is the 1.5 km hike through young spruce and pine to **Silkstone and Lovett Lakes**, created by the reclamation of coal mine pits.

## Nordegg Area

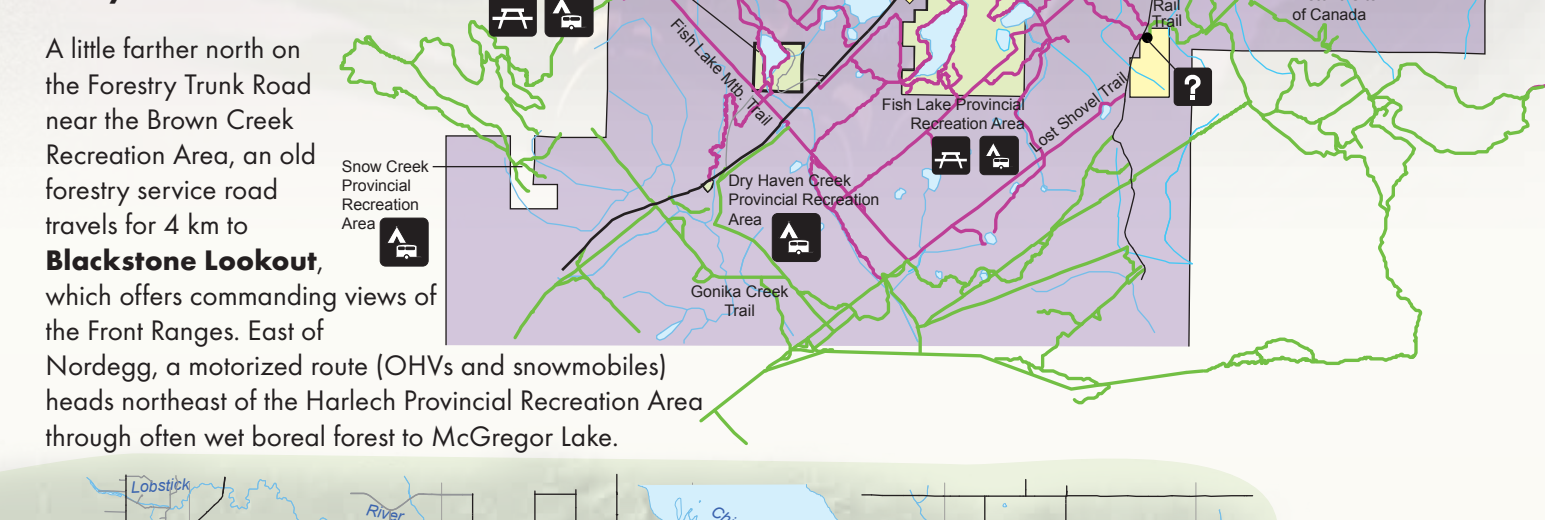
Situated near the junction of Highway 11 and the Forestry Trunk Road (Highway 734) west of Rocky Mountain House, **Nordegg** (www.travelnordegg.com) is a national historic site, commemorating one of the largest and most innovative coal briquette operations in Canada until it closed in 1935. Visitors can explore the Nordegg Museum and the historic town or, daily from May to early September, take a guided tour of the largely intact Brazeau Collieries mine site and its museum, which focuses on the early 1900s. For more information, phone 403-721-2625, stop at Nordegg's Museum/Visitor Information Centre or visit www.nordegghistoricalsociety.org.



## Nordegg and Area

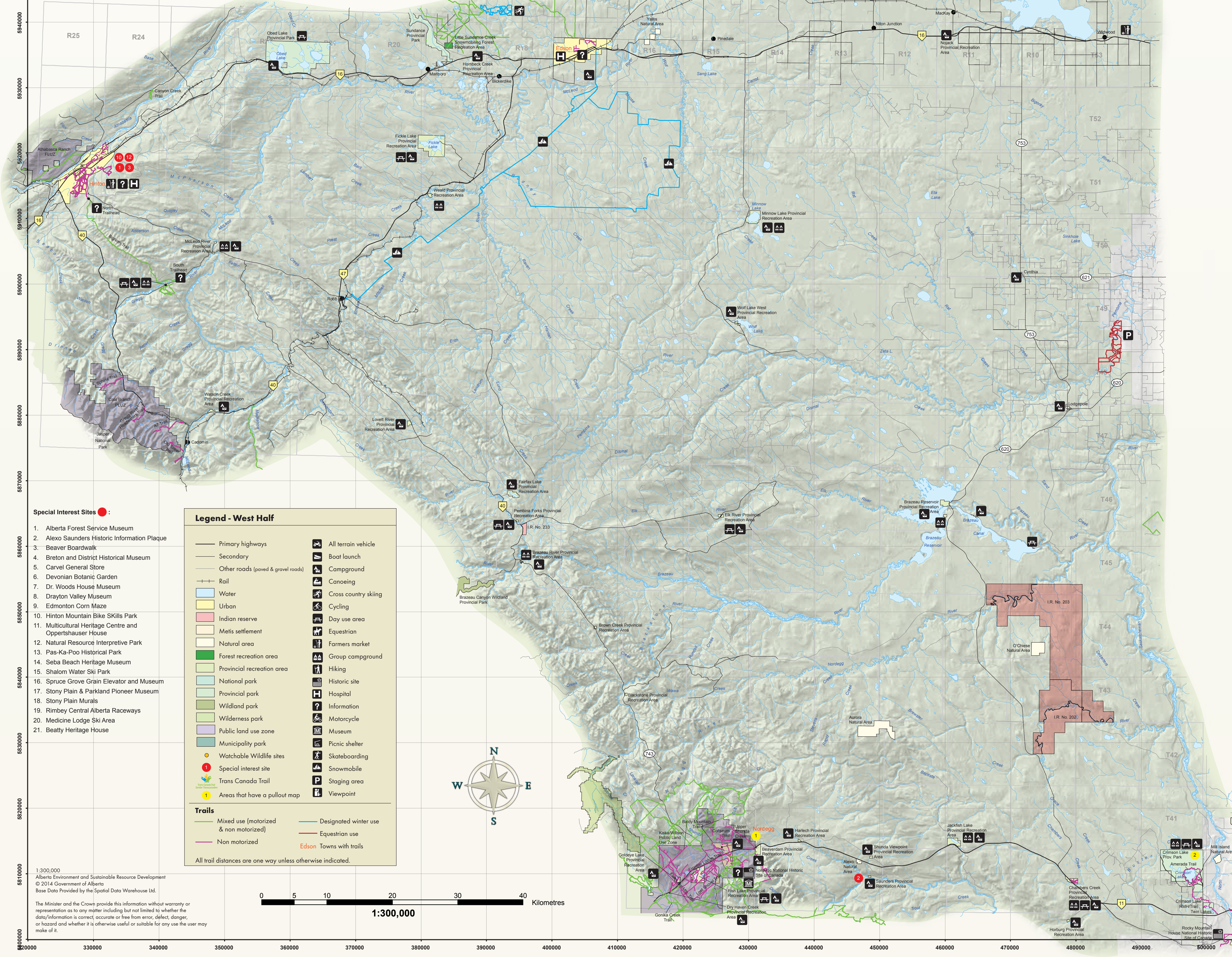
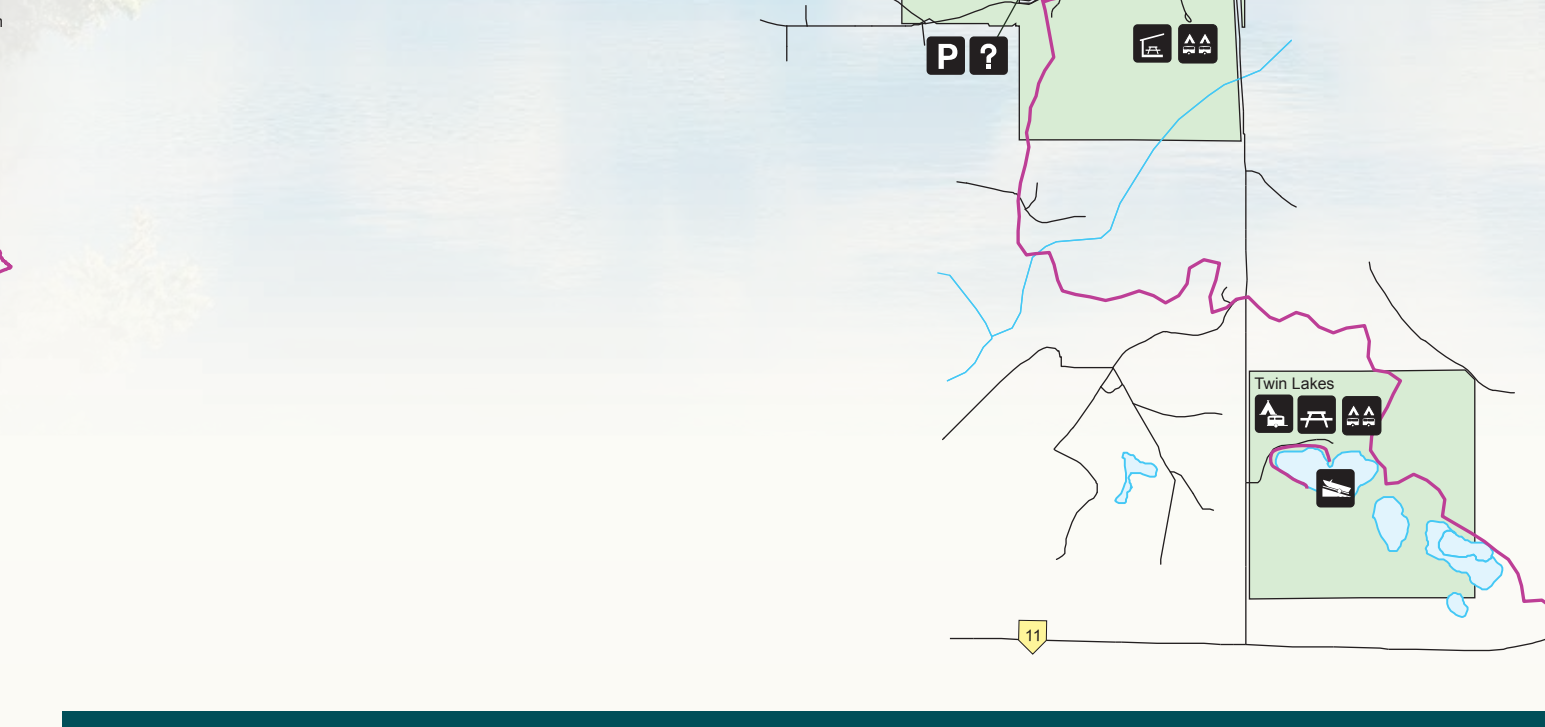
Just north of town, in the Kiska/Wilson Public Land Use Zone, a popular non-motorized trail leads 6.5 km up **Coliseum Mountain**, providing fine views east of the foothills and west of the Front Ranges of the Rocky Mountains. Hikers, mountain bikers, horseback riders, off-highway vehicle enthusiasts and snowmobilers can enjoy a similar panorama by heading north of Nordegg on the Shunda Creek Road and following a rough road for 6.5 km to a lookout on Baldy Mountain. Not far away, a trail leads snowmobilers and off-highway vehicle (OHV) users through rolling boreal forest around **Baldy Mountain**.

A little farther north on the Forestry Trunk Road near the Brown Creek Recreation Area, an old forestry service road travels for 4 km to **Blackstone Lookout**, which offers commanding views of the Front Ranges. East of Nordegg, a motorized route (OHVs and snowmobiles) heads northeast of the Harlech Provincial Recreation Area through often wet boreal forest to McGregor Lake.



## Crimson Lake Provincial Park

At Crimson Lake, the 10 km gravel **Amerada Trail** (hiking and cycling) closely circles the lake, providing viewpoint benches and opportunities to see wildlife such as moose and deer. A number of other, shorter trail sections, including a boardwalk, run along the lakeshore and through wetlands and forest; all link to the Amerada Trail and can be accessed from campground loops throughout the park. In winter, cross-country skiers can follow groomed trails through the campground loops or ski on 10 km of ungroomed tracks along the Amerada Trail.



**Special Interest Sites**

1. Alberta Forest Service Museum
2. Alexo Saunders Historic Information Plaque
3. Beaver Boardwalk
4. Breton and District Historical Museum
5. Carvel General Store
6. Devonian Botanic Garden
7. Dr. Woods House Museum
8. Drayton Valley Museum
9. Edmonton Corn Maze
10. Hinton Mountain Bike Skills Park
11. Multicultural Heritage Centre and Oppertshauer House
12. Natural Resource Interpretive Park
13. Pas-Ka-Poo Historical Park
14. Seba Beach Heritage Museum
15. Shalom Water Ski Park
16. Spruce Grove Grain Elevator and Museum
17. Stony Plain & Parkland Pioneer Museum
18. Stony Plain Murals
19. Rimbey Central Alberta Raceways
20. Medicine Lodge Ski Area
21. Betty Heritage House

**Legend - West Half**

Primary highways	All terrain vehicle
Secondary	Boat launch
Other roads (paved & gravel roads)	Campground
Rail	Canoing
Water	Cross country skiing
Urban	Cycling
Indian reserve	Day use area
Metis settlement	Equestrian
Natural area	Formers market
Forest recreation area	Group campground
Provincial recreation area	Hiking
National park	Historic site
Provincial park	Hospital
Wildland park	Information
Wilderness park	Motorcycle
Public land use zone	Museum
Municipality park	Picnic shelter
Watchable Wildlife sites	Skateboarding
Special interest site	Snowmobile
Trans Canada Trail	Staging area
Areas that have a pullout map	Viewpoint

**Trails**

Mixed use (motorized & non motorized)	Designated winter use
Non motorized	Equestrian use

All trail distances are one way unless otherwise indicated.

1:300,000  
Alberta Environment and Sustainable Resource Development © 2014 Government of Alberta  
Base Data Provided by the Spatial Data Warehouse Ltd.

The Minister and the Crown provide this information without warranty or representation as to any matter including but not limited to whether the data/information is correct, accurate or free from error, defect, danger, or hazard and whether it is otherwise useful or suitable for any use the user may make of it.

## Rocky Mountain House Area

**Rocky Mountain House** (www.rockymthouse.com; 1-800-565-3793), population 7,200, at the confluence of the North Saskatchewan and Clearwater Rivers, is a major staging area for trails in the southern section of this map and for exploring the numerous parks and protected areas along the David Thompson corridor (Highway 11). A network of paved walking, jogging and cycling trails winds through much of the town, including Riverside Park. The Rocky Mountain House Nordic Ski Club maintains 6 km of trails on the Pine Hills Golf Course.

From town, a non-motorized gravel trail leads 6 km west to **Rocky Mountain House National Historic Site of Canada** (www.pc.gc.ca; 403-845-2412), where interpretive signage along the 3.2 km **David Thompson Trail** and the 0.9 km **Chimney Trail** help visitors learn about the site's early 19th-century fur trading history. Northwest of Rocky Mountain House along Highway 11, a gravel trail leads through a landscape of sand dunes, rolling wetlands and pine forest to reach Twin Lakes in 10 km and Crimson Lake in 16 km. Both are part of **Crimson Lake Provincial Park** - a meeting place of foothills forests, bogs and fens, rolling sand hills and aspen parkland - where a diversity of plant and animal life can be viewed. At Twin Lakes, a boardwalk trail makes for a pleasant walk along the lakeshore.



## Rocky Mountain House

**Rocky Mountain House**

**Know Before You Go**

There is limited maintenance on many trails. To maximize enjoyment of these trails, gather additional details about the trails, current conditions, local sites of interest, area services and access points from nearby communities and recreation associations (see website information in the text that accompanies this map). Further visitor information can be obtained from:

**Travel Alberta:** www.travelalberta.com; 1-800-ALBERTA  
**Alberta Parks:** www.albertaparks.ca  
**ESRD:** www.esrd.alberta.ca  
**Alberta Parks Campground Reservations:** online www.reserve.albertaparks.ca or toll-free 1-877-537-2757

**Trail closures may be in effect due to flooding or other hazardous conditions. BEFORE YOU GO check ESRD website (www.srd.alberta.ca/RecreationPublicUse/PublicandClosures/LandTrailClosures.aspx) and Parks website (www.albertaparks.ca/albertaparksca/advisories-public-safety/trail-reports.aspx) for trail alerts and closure notices.**

This map includes designated, managed trails; many can be used year round. Trail quality and difficulty of use can vary considerably, with surface materials ranging from pavement and groomed snow to dirt and sand/gravel. Some trails are signed and regularly maintained; others are not. Even maintained trails can be challenging when wet or covered in fresh snowfall.

Similarly, major access roads range from paved highways to good gravel (i.e. Forestry Trunk Road/Highway 40 north of Nordegg) to poorer gravel roads, which may not be regularly maintained.

Temperatures can range from winter lows of -40 Celsius to summer highs in the upper 30s. Precipitation and harsh conditions can occur at any time. Bugs can be bothersome, especially in wet and shaded areas in late spring and summer.

You may encounter wildlife, including grizzlies, black bears and large ungulates. Fall hunting is permitted in many areas; be aware, wear bright colours and follow safe practices.

Trails may be remote from services or help. Carry sufficient food, water, clothing, first aid and emergency/survival supplies, repair gear, navigation equipment and a mobile phone.

Note: mobile phones may not have reception in all areas.

The recreational trails shown on this map are unsupervised and are used at the personal responsibility and risk of persons using them.



The Alberta Trail Mapping Partnership is made possible through the combined efforts of and funding from the following organizations, under the auspices of the Alberta Recreation Corridor and Trails Designation Program:

Alberta (AB) Tourism, Parks and Recreation  
AB Environment and Sustainable Resource Development (ESRD)  
Alberta TrailNet Society  
Alberta Off-Highway Vehicle Association  
Alberta Snowmobile Association

Gratitude is expressed to all local clubs, groups, organizations, individuals and municipalities for their review, comments and assistance with data and updates in developing this map.

For more information or for copies of the map, please contact Alberta TrailNet at www.albertatrailnet.com; 1-877-987-2457

Photo Credits:  
AOHVA Don Livingston James Clark  
Bill Corbett Doris Poleymy Travel Alberta  
Derry Armstrong Frontier Lodge

Trail layer provided by the City of Edmonton

Anyone making use of this document is advised that the Government of Alberta and Alberta TrailNet disclaim liability for any claims, actions, demands or suits which may arise by reason of any person relying on the information contained in this document, and more particularly, without limiting the generality of the foregoing, the government and TrailNet disclaim liability for the appropriateness or accuracy of the within guidelines, details or specifications for any project.

In plain language, this document provides you with a variety of recreation facility locations and activities. None of the maps are intended for navigational purposes. The trail locations come from various sources and do not represent Government of Alberta or Alberta TrailNet standards.

