

Botego



Detailed product information can be found on www.bopla.de



- 4 basic sizes
- For horizontal or vertical use
- 3 standard heights
- Other heights available by using extension sets
- Design with or without air vents
- Locking of the enclosure parts; also screwable (option)
- Design elements and caps in 6 colours
- Angled front (option)
- Front/rear panel, aluminium, plug-in and screwable
- Good stackability
- Flat wall mounting possible

Colour:

Light grey, similar to RAL 7035; special colours on request

Protection class:

Plain: IP 40/DIN EN 60529;
with air vents: IP 30/DIN EN 60529

Enclosure material:

ABS; for details see Technical Information

This flexible ABS enclosure system creates an individual design by using various standard components



The enclosure height (or width in vertical use) can be extended by using 45.72 mm grid extension sets (9 HP).



Side guides and bosses for self-tapping screws in the enclosure shells – matched to Euro card formats, among others.



Ventilation can be designed individually, depending on the arrangement of the half-shells (directly on top of each other, or displaced in respect of each other).



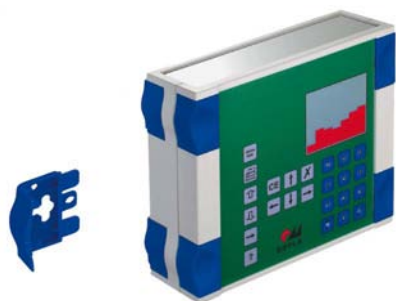
Sturdy snap-lock technology makes possible fast, toolless mounting. As an option, the half-shells can be screwed together.



The mounting area is concealed with coloured caps. Additional design elements are also available.



Cap sets 1, 2 and 3 are designed for use as desktop enclosures (1), for optimal stackability (2) and to tip up the enclosure (3).



Cap set 4 permits concealed enclosure mounting on the wall.



The angled operating front plastic operating front for optional use (18 HP and higher) offers easy operation.



Special 19" subracks can be fitted.

Botego BO 320.. (L) | Enclosures



Enclosure, plain

Model	Order no.	A	B	C	c1	U	HP
BO 32006	68320060	174	196,9	49,96	31,28	3	6
BO 32009	68320090	174	196,9	65,2	46,52	3	9
BO 32012	68320120	174	196,9	80,44	61,76	3	12

Scope of delivery: 2 half-shells

Note: Caps are not included in the scope of delivery.

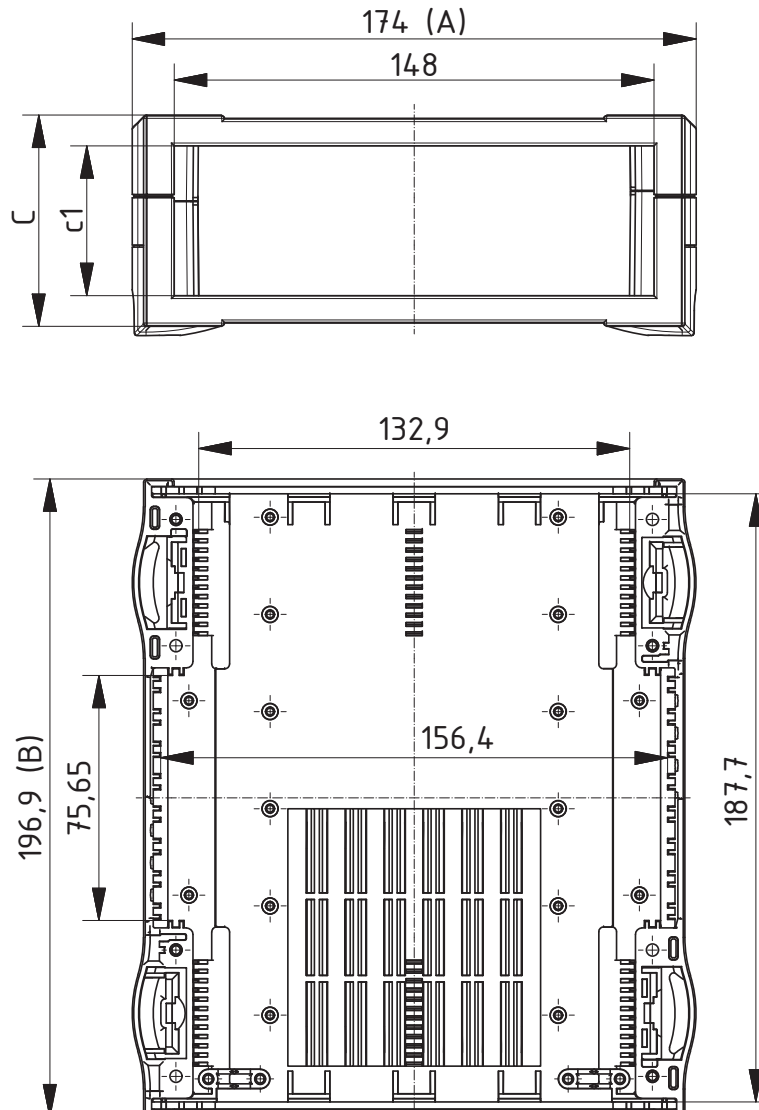


Enclosure with air vents in the lid and base

Model	Order no.	A	B	C	c1	U	HP
BO 32006 L	68320061	174	196,9	49,96	31,28	3	6
BO 32009 L	68320091	174	196,9	65,2	46,52	3	9
BO 32012 L	68320121	174	196,9	80,44	61,76	3	12

Scope of delivery: 2 half-shells

Note: Caps are not included in the scope of delivery.



Z-2803193

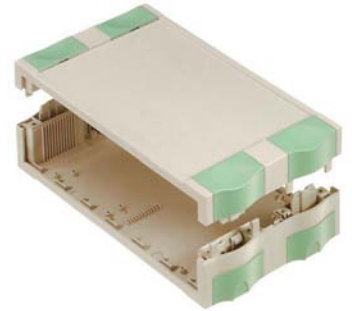
Botego BO 514.. (L) | Enclosures

Enclosure, plain

Model	Order no.	A	B	C	c1	U	HP
BO 51406	68514060	240,675	136,9	49,96	31,28	4,5	6
BO 51409	68514090	240,675	136,9	65,2	46,52	4,5	9
BO 51412	68514120	240,675	136,9	80,44	61,76	4,5	12

Scope of delivery: 2 half-shells

Note: Caps are not included in the scope of delivery.

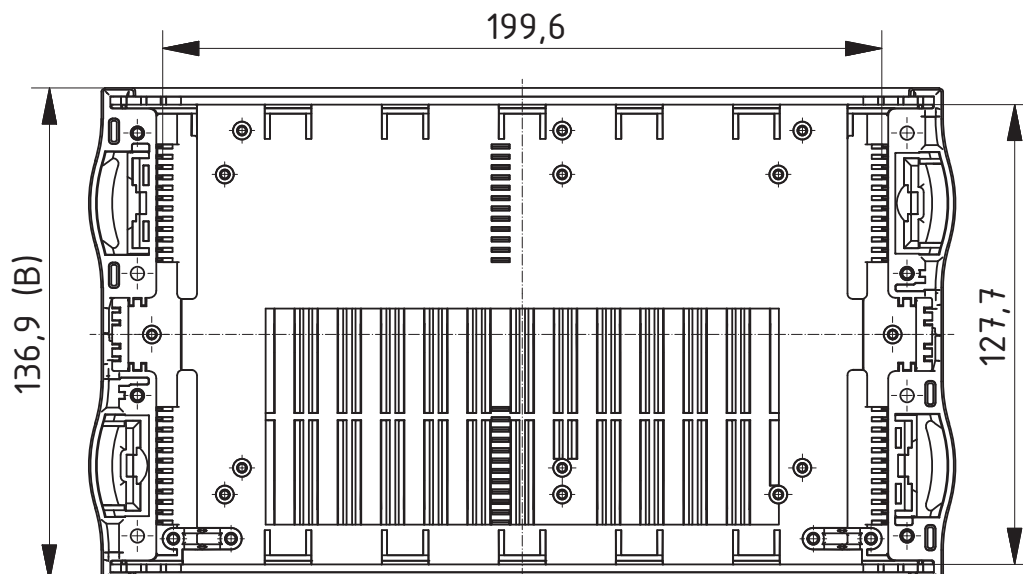
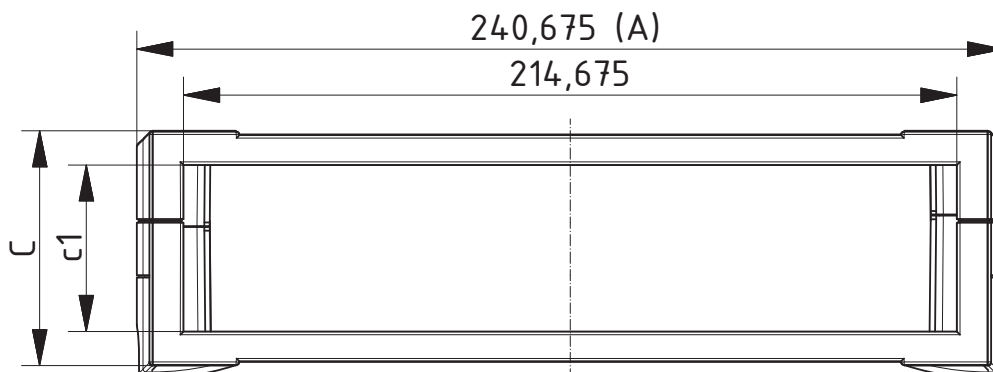
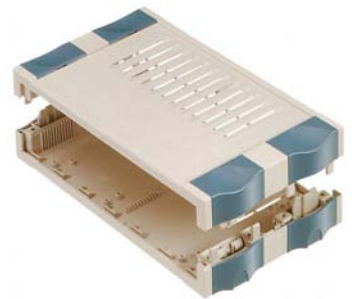


Enclosure with air vents in the lid and base

Model	Order no.	A	B	C	c1	U	HP
BO 51406 L	68514061	240,675	136,9	49,96	31,28	4,5	6
BO 51409 L	68514091	240,675	136,9	65,2	46,52	4,5	9
BO 51412 L	68514121	240,675	136,9	80,44	61,76	4,5	12

Scope of delivery: 2 half-shells

Note: Caps are not included in the scope of delivery.



Z-2803194

For accessories, please see the end of the chapter

Botego BO 520.. (L) | Enclosures



Enclosure, plain

Model	Order no.	A	B	C	c1	U	HP
BO 52006	68520060	240,675	196,9	49,96	31,28	4,5	6
BO 52009	68520090	240,675	196,9	65,2	46,52	4,5	9
BO 52012	68520120	240,675	196,9	80,44	61,76	4,5	12

Scope of delivery: 2 half-shells

Note: Caps are not included in the scope of delivery.

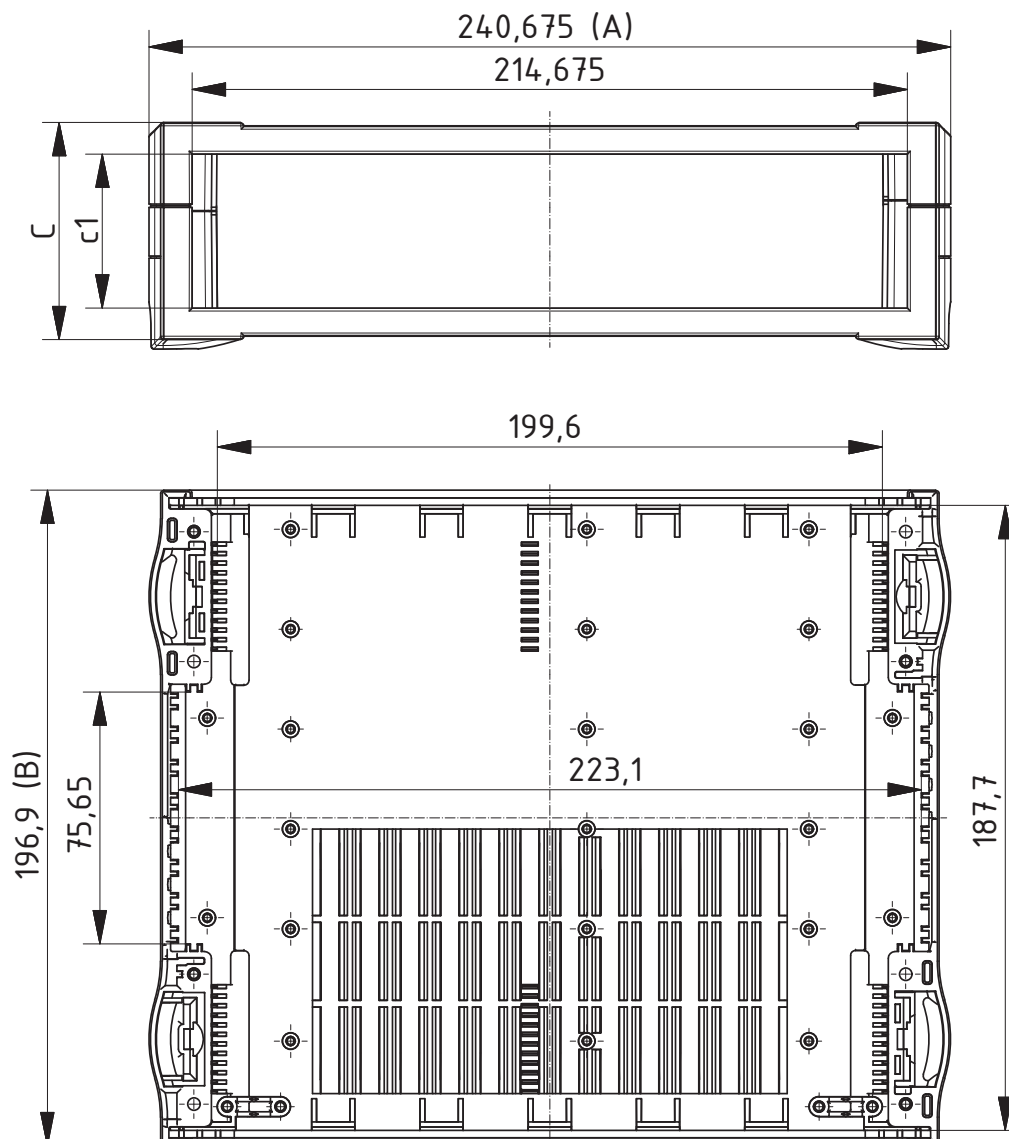


Enclosure with air vents in the lid and base

Model	Order no.	A	B	C	c1	U	HP
BO 52006 L	68520061	240,675	196,9	49,96	31,28	4,5	6
BO 52009 L	68520091	240,675	196,9	65,2	46,52	4,5	9
BO 52012 L	68520121	240,675	196,9	80,44	61,76	4,5	12

Scope of delivery: 2 half-shells

Note: Caps are not included in the scope of delivery.



Z-2803195

Botego BO 626.. (L) | Enclosures

Enclosure, plain

Model	Order no.	A	B	C	c1	U	HP
BO 62606	68626060	307,35	256,9	49,96	31,28	6	6
BO 62609	68626090	307,35	256,9	65,2	46,52	6	9
BO 62612	68626120	307,35	256,9	80,44	61,76	6	12

Scope of delivery: 2 half-shells

Note: Caps are not included in the scope of delivery.

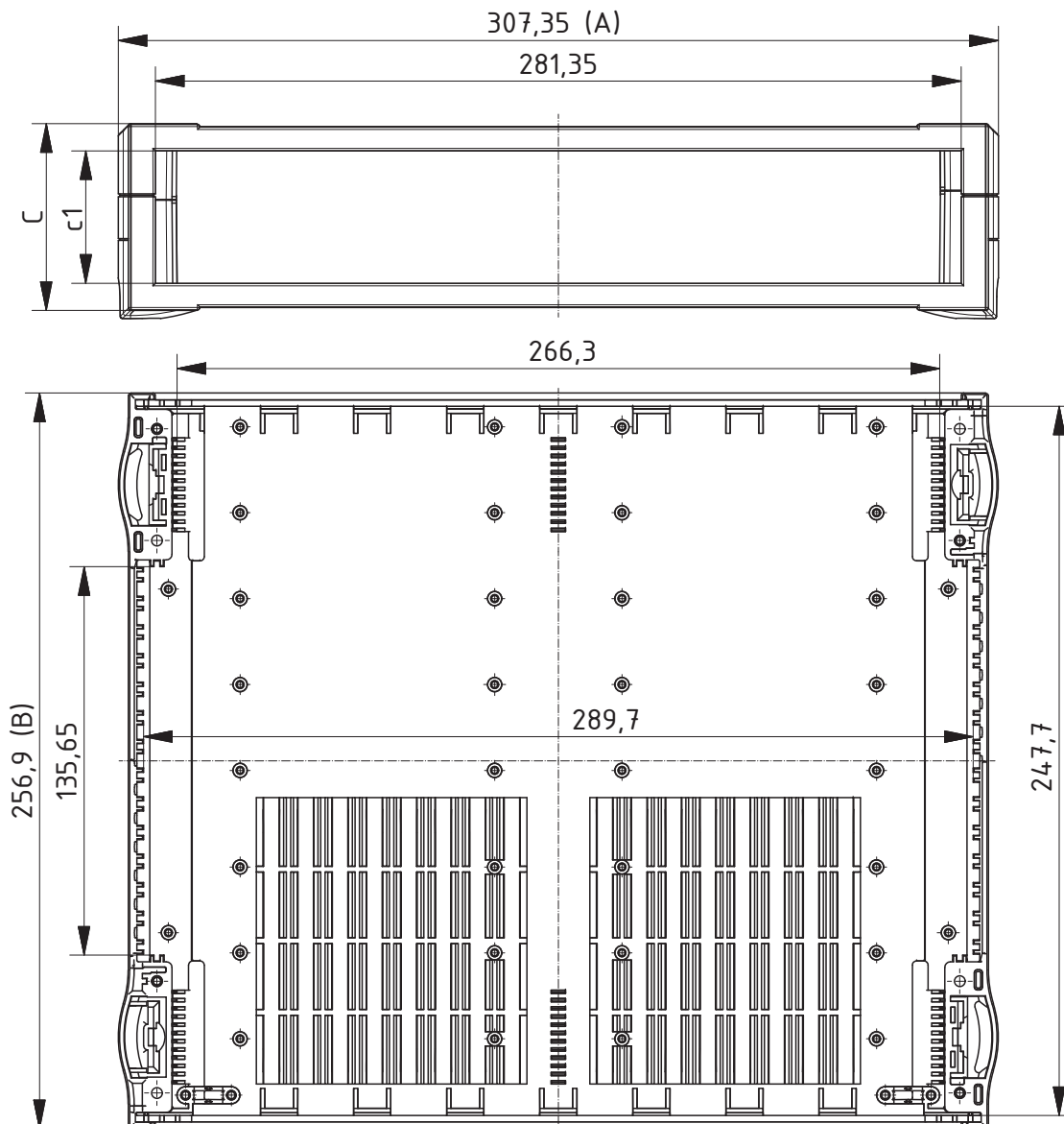


Enclosure with air vents in the lid and base

Model	Order no.	A	B	C	c1	U	HP
BO 62606 L	68626061	307,35	256,9	49,96	31,28	6	6
BO 62609 L	68626091	307,35	256,9	65,2	46,52	6	9
BO 62612 L	68626121	307,35	256,9	80,44	61,76	6	12

Scope of delivery: 2 half-shells

Note: Caps are not included in the scope of delivery.



Z-2803196

For accessories, please see the end of the chapter

Botego | Accessories



Extension sets, 9 HP, plain and with air vents (L)

Model	Order no.	HP	Note
BO AB 02009-7035	68200910	9	For BO 320..(L), for BO 520..(L)
BO AB 02009 L-7035	68200911	9	For BO 320..(L), for BO 520..(L)
BO AB 02609-7035	68260910	9	For BO 626..(L)
BO AB 02609 L-7035	68260911	9	For BO 626..(L)

Scope of delivery: 2 extension parts

Note: L = With injection-moulded air vents

Table of enclosures, extension set AB 02609 (L) and front panel

Enclosures	Internal encl. Height TE clearance (H1)		Number of AB 02609 (L)	Front panels to be used
BO 62606 (L)	31.28	6	-	BO FP 60006
BO 62609 (L)	46.52	9	-	BO FP 60009
BO 62612 (L)	61.76	12	-	BO FP 60012
BO 62606 (L)	77.00	15	1	BO FP 60015
BO 62609 (L)	92.24	18	1	BO FP 60018
BO 62612 (L)	107.48	21	1	BO FP 60021
BO 62606 (L)	122.72	24	2	BO FP 60024
BO 62609 (L)	137.96	27	2	BO FP 60027
BO 62612 (L)	153.2	30	2	BO FP 60030
BO 62606 (L)	168.44	33	3	BO FP 60033
BO 62609 (L)	183.68	36	3	BO FP 60036
BO 62612 (L)	198.92	39	3	BO FP 60039
BO 62606 (L)	214.16	42	4	BO FP 60042
BO 62609 (L)	229.4	45	4	BO FP 60045
BO 62612 (L)	244.64	48	4	BO FP 60048

Botego | Accessories

Front panels, 2 mm, natural-coloured anodised aluminium

Model	Order no.	Note
BO FP 30006	68711306	For BO 32006 (L)
BO FP 30009	68711309	For BO 32009 (L)
BO FP 30012	68711312	For BO 32012 (L)
BO FP 30015	68711315	For BO 32006 (L) + 1x AB 02009 (L)
BO FP 30018	68711318	For BO 32009 (L) + 1x AB 02009 (L)
BO FP 30021	68711321	For BO 32012 (L) + 1x AB 02009 (L)
BO FP 30024	68711324	For BO 32006 (L) + 2x AB 02009 (L)
BO FP 30027	68711327	For BO 32009 (L) + 2x AB 02009 (L)
BO FP 30030	68711330	For BO 32012 (L) + 2x AB 02009 (L)
BO FP 30033	68711333	For BO 32006 (L) + 3x AB 02009 (L)
BO FP 30036	68711336	For BO 32009 (L) + 3x AB 02009 (L)
BO FP 30039	68711339	For BO 32012 (L) + 3x AB 02009 (L)
BO FP 30042	68711342	For BO 32006 (L) + 4x AB 02009 (L)
BO FP 30045	68711345	For BO 32009 (L) + 4x AB 02009 (L)
BO FP 30048	68711348	For BO 32012 (L) + 4x AB 02009 (L)
BO FP 50006	68711506	For BO 51406 (L); for BO 52006 (L)
BO FP 50009	68711509	For BO 51409 (L); for BO 52009 (L)
BO FP 50012	68711512	For BO 51412 (L); for BO 52012 (L)
BO FP 50015	68711515	For BO 52006 (L) + 1x AB 02009 (L)
BO FP 50018	68711518	For BO 52009 (L) + 1x AB 02009 (L)
BO FP 50021	68711521	For BO 52012 (L) + 1x AB 02009 (L)
BO FP 50024	68711524	For BO 52006 (L) + 2x AB 02009 (L)
BO FP 50027	68711527	For BO 52009 (L) + 2x AB 02009 (L)
BO FP 50030	68711530	For BO 52012 (L) + 2x AB 02009 (L)
BO FP 50033	68711533	For BO 52006 (L) + 3x AB 02009 (L)
BO FP 50036	68711536	For BO 52009 (L) + 3x AB 02009 (L)
BO FP 50039	68711539	For BO 52012 (L) + 3x AB 02009 (L)
BO FP 50042	68711542	For BO 52006 (L) + 4x AB 02009 (L)
BO FP 50045	68711545	For BO 52009 (L) + 4x AB 02009 (L)
BO FP 50048	68711548	For BO 52012 (L) + 4x AB 02009 (L)
BO FP 60006	68711606	For BO 62606 (L)
BO FP 60009	68711609	For BO 62609 (L)
BO FP 60012	68711612	For BO 62612 (L)
BO FP 60015	68711615	For BO 62606 (L) + 1x AB 02009 (L)
BO FP 60018	68711618	For BO 62609 (L) + 1x AB 02009 (L)
BO FP 60021	68711621	For BO 62612 (L) + 1x AB 02009 (L)
BO FP 60024	68711624	For BO 62606 (L) + 2x AB 02009 (L)
BO FP 60027	68711627	For BO 62609 (L) + 2x AB 02009 (L)
BO FP 60030	68711630	For BO 62612 (L) + 2x AB 02009 (L)
BO FP 60033	68711633	For BO 62606 (L) + 3x AB 02009 (L)
BO FP 60036	68711636	For BO 62609 (L) + 3x AB 02009 (L)
BO FP 60039	68711639	For BO 62612 (L) + 3x AB 02009 (L)
BO FP 60042	68711642	For BO 62606 (L) + 4x AB 02009 (L)
BO FP 60045	68711645	For BO 62609 (L) + 4x AB 02009 (L)
BO FP 60048	68711648	For BO 62612 (L) + 4x AB 02009 (L)



Scope of delivery: 1 front panel
 Note: Plastic front panels on request.

Botego | Accessories



Cap set 1 for use as desktop enclosure

Model	Order no.	Colour
BO-KS 1-7035	68011000	Light grey
BO-KS 1-6027	68012000	Light green
BO-KS 1-7024	68013000	Graphite grey
BO-KS 1-5014	68014000	Dove blue
BO-KS 1-5002	68015000	Ultramarine blue
BO-KS 1-I0788	68016000	Green translucent

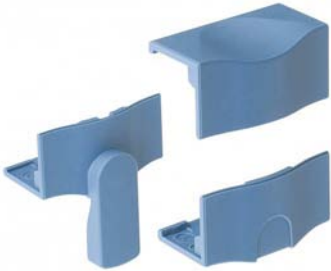
Scope of delivery: 4 upper caps, 4 lower caps, 4 rubber feet



Cap set 2 for optimal stackability

Model	Order no.	Colour
BO-KS 2-7035	68021000	Light grey
BO-KS 2-6027	68022000	Light green
BO-KS 2-7024	68023000	Graphite grey
BO-KS 2-5014	68024000	Dove blue
BO-KS 2-5002	68025000	Ultramarine blue
BO-KS 2-I0788	68026000	Green translucent

Scope of delivery: 8 lower caps, 4 rubber feet



Cap set 3 with collapsible tip-up foot

Model	Order no.	Colour
BO-KS 3-7035	68031000	Light grey
BO-KS 3-6027	68032000	Light green
BO-KS 3-7024	68033000	Graphite grey
BO-KS 3-5014	68034000	Dove blue
BO-KS 3-5002	68035000	Ultramarine blue
BO-KS 3-I0788	68036000	Green translucent

Scope of delivery: 4 upper caps, 2 lower caps, 2 foot caps with collapsible feet, 2 rubber feet



Cap set 4 for wall mounting

Model	Order no.	Colour
BO-KS 4-7035	68041000	Light grey
BO-KS 4-6027	68042000	Light green
BO-KS 4-7024	68043000	Graphite grey
BO-KS 4-5014	68044000	Dove blue
BO-KS 4-5002	68045000	Ultramarine blue
BO-KS 4-I0788	68046000	Green translucent

Scope of delivery: 4 upper caps, 4 wall-fixing caps, 4 rubber feet



Angled operating front, 18 HP

Model	Order no.	Note
BO-SF-3 001800	68018003	For BO 32009 (L) + 1x BO AB 02009 (L)
BO-SF-5 001800	68018005	For BO 52009 (L) + 1x BO AB 02009 (L)
BO-SF-6 001800	68018006	For BO 62609 (L) + 1x BO AB 02609 (L)

Scope of delivery: 1 angled operating front

Botego | Accessories

Handle

Model	Order no.	Note
BO HS 30000	68430000	For BO 320... (L)
BO HS 50000	68450000	For BO 514... (L); for BO 520... (L)
BO HS 60000	68460000	For BO 626... (L)

Scope of delivery: Handle side parts (PA6), profile (aluminium), seals, screws

Note: Processing of the enclosure on request. The maximum load is 300 N.



Cable strain-relief set

Model	Order no.
BO-ZE	68900040

Scope of delivery: 10 strain relief brackets, 20 screws



Set of screws

Model	Order no.	Note
BO-SHR Z KA35x10	68900030	For optional enclosure screwing

Scope of delivery: 40 screws



Design element set 2

Model	Order no.	Colour	Note
BO-D2-6TE-7035	68120610*	Light grey	For BO FP...06
BO-D2-6TE-6027	68120620*	Light green	For BO FP...06
BO-D2-6TE-7024	68120630*	Graphite grey	For BO FP...06
BO-D2-6TE-5014	68120640*	Dove blue	For BO FP...06
BO-D2-6TE-5002	68120650*	Ultramarine blue	For BO FP...06
BO-D2-6TE-10788	68120660*	Green translucent	For BO FP...06
BO-D2-9TE-7035	68120910*	Light grey	For BO FP...09
BO-D2-9TE-6027	68120920*	Light green	For BO FP...09
BO-D2-9TE-7024	68120930*	Graphite grey	For BO FP...09
BO-D2-9TE-5014	68120940*	Dove blue	For BO FP...09
BO-D2-9TE-5002	68120950	Ultramarine blue	For BO FP...09
BO-D2-9TE-10788	68120960	Green translucent	For BO FP...09
BO-D2-12TE-7035	68121210*	Light grey	For BO FP...12
BO-D2-12TE-6027	68121220*	Light green	For BO FP...12
BO-D2-12TE-7024	68121230*	Graphite grey	For BO FP...12
BO-D2-12TE-5014	68121240*	Dove blue	For BO FP...12
BO-D2-12TE-5002	68121250*	Ultramarine blue	For BO FP...12
BO-D2-12TE-10788	68121260*	Green translucent	For BO FP...12
BO-D2-15TE-7035	68121510*	Light grey	For BO FP...15
BO-D2-15TE-6027	68121520	Light green	For BO FP...15
BO-D2-15TE-7024	68121530*	Graphite grey	For BO FP...15
BO-D2-15TE-5014	68121540	Dove blue	For BO FP...15
BO-D2-15TE-5002	68121550	Ultramarine blue	For BO FP...15
BO-D2-15TE-10788	68121560*	Green translucent	For BO FP...15
BO-D2-18TE-7035	68121810*	Light grey	For BO FP...18
BO-D2-18TE-6027	68121820	Light green	For BO FP...18
BO-D2-18TE-7024	68121830*	Graphite grey	For BO FP...18
BO-D2-18TE-5014	68121840*	Dove blue	For BO FP...18
BO-D2-18TE-5002	68121850*	Ultramarine blue	For BO FP...18
BO-D2-18TE-10788	68121860*	Green translucent	For BO FP...18

Scope of delivery: 2 design elements, fixing material

Note: The necessary processing of the front panel takes place on request.



Botego | Accessories



Design element set 3

Model	Order no.	Colour	Note
BO-D3-6TE-7035	68130610*	Light grey	For BO FP...06
BO-D3-6TE-6027	68130620*	Light green	For BO FP...06
BO-D3-6TE-7024	68130630*	Graphite grey	For BO FP...06
BO-D3-6TE-5014	68130640*	Dove blue	For BO FP...06
BO-D3-6TE-5002	68130650*	Ultramarine blue	For BO FP...06
BO-D3-6TE-10788	68130660*	Green translucent	For BO FP...06
BO-D3-9TE-7035	68130910*	Light grey	For BO FP...09
BO-D3-9TE-6027	68130920*	Light green	For BO FP...09
BO-D3-9TE-7024	68130930*	Graphite grey	For BO FP...09
BO-D3-9TE-5014	68130940*	Dove blue	For BO FP...09
BO-D3-9TE-5002	68130950*	Ultramarine blue	For BO FP...09
BO-D3-9TE-10788	68130960	Green translucent	For BO FP...09
BO-D3-12TE-7035	68131210*	Light grey	For BO FP...12
BO-D3-12TE-6027	68131220*	Light green	For BO FP...12
BO-D3-12TE-7024	68131230*	Graphite grey	For BO FP...12
BO-D3-12TE-5014	68131240*	Dove blue	For BO FP...12
BO-D3-12TE-5002	68131250*	Ultramarine blue	For BO FP...12
BO-D3-12TE-10788	68131260*	Green translucent	For BO FP...12
BO-D3-15TE-7035	68131510*	Light grey	For BO FP...15
BO-D3-15TE-6027	68131520*	Light green	For BO FP...15
BO-D3-15TE-7024	68131530	Graphite grey	For BO FP...15
BO-D3-15TE-5014	68131540*	Dove blue	For BO FP...15
BO-D3-15TE-5002	68131550*	Ultramarine blue	For BO FP...15
BO-D3-15TE-10788	68131560*	Green translucent	For BO FP...15
BO-D3-18TE-7035	68131810*	Light grey	For BO FP...18
BO-D3-18TE-6027	68131820*	Light green	For BO FP...18
BO-D3-18TE-7024	68131830*	Graphite grey	For BO FP...18
BO-D3-18TE-5014	68131840	Dove blue	For BO FP...18
BO-D3-18TE-5002	68131850*	Ultramarine blue	For BO FP...18
BO-D3-18TE-10788	68131860*	Green translucent	For BO FP...18

Scope of delivery: 2 design elements, fixing material

Note: Processing is necessary for fixing to the front panel.

Filling profile set for subrack, aluminium

Model	Order no.	Note
BO-PB1-21	68731210*	Enclosure height 24 HP
BO-PB1-42	68731420	Enclosure height 45 HP

Scope of delivery: 1 set = 2 pieces

Note: For accessories, see Interzoll accessories chapter.



Botego | Accessories

Profile set TF

Model	Order no.	Note
BO-PT1-06	68721060*	For BO...06
BO-PT1-09	68721090*	For BO...09
BO-PT1-12	68721120*	For BO...12
BO-PT1-15	68721150*	For BO...06 + 1 x AB...
BO-PT1-18	68721180*	For BO...09 + 1 x AB...
BO-PT1-21	68721210*	For BO...12 + 1 x AB...
BO-PT1-24	68721240*	For BO...06 + 2 x AB...
BO-PT1-27	68721270*	For BO...09 + 2 x AB...
BO-PT1-30	68721300*	For BO...12 + 2 x AB...
BO-PT1-33	68721330*	For BO...06 + 3 x AB...
BO-PT1-36	68721360	For BO...09 + 3 x AB...
BO-PT1-39	68721390*	For BO...12 + 3 x AB...
BO-PT1-42	68721420*	For BO...06 + 4 x AB...
BO-PT1-45	68721450*	For BO...09 + 4 x AB...
BO-PT1-48	68721480*	For BO...12 + 4 x AB...

Scope of delivery: 2 profiles (aluminium), 2 tapped strips

Note: * = By inserting profiles and tapped stripes between the half-shells/extension sets, a screw-on front panel can be fitted to the enclosure.



Part front panels, natural-coloured anodised aluminium, passivated on rear

Model	Order no.	Note
TF/M 306	86806033	3 U, 6 HP
TF/M 312	86812033	3 U, 12 HP
TF/M 315	86815033*	3 U, 15 HP
TF/M 318	86818033	3 U, 18 HP
TF/M 321	86821033	3 U, 21 HP
TF/M 324	86824033*	3 U, 24 HP
TF/M 333	86833033*	3 U, 33 HP
TF/M 336	86836033*	3 U, 36 HP
TF/M 339	86839033*	3 U, 39 HP
TF/M 342	86842033	3 U, 42 HP
TF/M 345	86845033*	3 U, 45 HP
TF/M 348	86848033*	3 U, 48 HP
TF/M 606	86806063	6 U, 6 HP
TF/M 609	86809063	6 U, 9 HP
TF/M 612	86812063	6 U, 12 HP
TF/M 615	86815063*	6 U, 15 HP
TF/M 618	86818063*	6 U, 18 HP
TF/M 624	86824063*	6 U, 24 HP
TF/M 630	86830063*	6 U, 30 HP
TF/M 633	86833063*	6 U, 33 HP
TF/M 636	86836063*	6 U, 36 HP
TF/M 639	86839063*	6 U, 39 HP
TF/M 642	86842063	6 U, 42 HP
TF/M 645	86845063*	6 U, 45 HP
TF/M 648	86848063*	6 U, 48 HP

Scope of delivery: 1 front panel

Note: For screw holder and screws for part front panels, see chapter about Interzoll Modul / Interzoll.

Part front panels for BO 514.. / BO 520.. on request.

