

# FAIRBANKS®

## FB 350 SERIES DIGITAL INDICATOR



**Designed to operate in  
a wide variety of  
weighing applications  
and environments,  
while offering the  
most advanced  
features in its class.**



# FAIRBANKS®

## FB 350 SERIES DIGITAL INDICATOR

The FB 350 Series are multi-purpose digital weight indicators suitable for most general weighing applications. Depending on the configuration and accessories selected, the FB 350 can perform industrial weighing, check weighing and parts/piece counting (over/under and percentage), filling, batching and discharge weighing. The FB 350 is available in two enclosure types: A NEMA 12 Zinc Die Cast model and NEMA 4X stainless steel model.

### OUTSTANDING PERFORMANCE

Industrial uses for the FB 350 are extremely varied and these indicators have gained a reputation for reliable operation in the following applications:

- System Integration
- Food Processing
- Batching
- Agricultural
- Process Control
- Over/Under Checkweighing
- Parts Counting
- Industrial Weighing

### CUSTOM INFORMATION OUTPUT

Don't get frustrated with other indicators that don't meet your needs — the FB 350 is enhanced with a programmable output function that allows you to customize the way in which you receive your operation's weighing information.

If any of the FB 350's 14 selectable fixed format data output strings don't meet your needs, you can create your

own using any simple text editor, then downloading it to the FB 350 through the standard RS232 serial port. This capability allows you to transmit data from the FB 350 to a printer or PC in a format ideally suited to your requirements.

### FEATURES

- Time and Date Clock
- Selectable weighing units; lb, kg, oz, g, lb-oz
- LED or LCD Display
- Perform a Tare, Print or Zero function with a remote key
- AC or DC Operation
- Available Options:
  - Configurable Analog Output 0-10 VDC, 0-20 VDC, 4-20 mA;
  - RS 485; 20 mA Current Loop;
  - Battery Module with recharging circuit

### VERSATILE INSTRUMENTATION

The FB 350 Series indicators have the ability to run up to six, 350 ohm load cells and therefore, can handle nearly any basic weighing function. With a choice of available RS 232, RS 485 or

20 mA outputs, these indicators can be used with peripheral devices such as printers, remote displays and computers. An adjustable mounting bracket, optional on Zinc Die Cast models, allows for desk or wall mounting.

### WIDE RANGE OF FUNCTIONS

The FB 350 can be configured in a number of ways to accommodate a variety of applications. It can stand alone, operate in a 485 network, or be configured with an external switch to operate the zero, tare, print functions or activate the set point function.

### TOUGH, DEPENDABLE DESIGN

The FB 350 Series is protected by a NEMA 4X rated stainless steel enclosure, so these rugged indicators can operate in almost any environment. The FB 350 is also available in a NEMA 12 Zinc Die Cast enclosure which features a free standing design.

### EASY PORTABILITY

The FB 350 battery models allow users the ability to move freely around an application site without regard to the availability of an AC power source.

### AVAILABLE APPLICATIONS

- Checkweighing (Absolute Value or Percent)
- Filling, 2 speed, single ingredient
- Batching, single speed, 3 ingredients
- Loss in Weight, 2 speed emptying
- Independent Setpoints (3)
- Parts Counting (Absolute Value or Percent)
- Remote Key Operation
- Custom Data Transmissions



*FB 350 Digital Indicator shown with optional swivel bracket/stand, analog output and setpoint output.*



The versatility of the FB 350 Series Digital Indicator makes it an instrument of choice for a variety of applications and environments, including harsh, chemical operations.



**SHARP, EASY-TO-READ DISPLAY**

There are two display choices for the FB 350. The first is a bright green, 6 digit, 7 segment LED display with .75" tall characters and 11 LED annunciators for operational status (shown above). The other is a 6 digit, 7 segment, black LCD display with 1" tall characters and 11 LCD annunciators for operational status.

To achieve maximum battery life, the LCD display is recommended for use with the battery power option. To further prolong battery life, it is also possible to program the FB 350 to shut off the display if there has been no activity for a selected period of time or disable the display completely while the FB 350 remains operational.



**EASY-TO-USE KEYPAD**

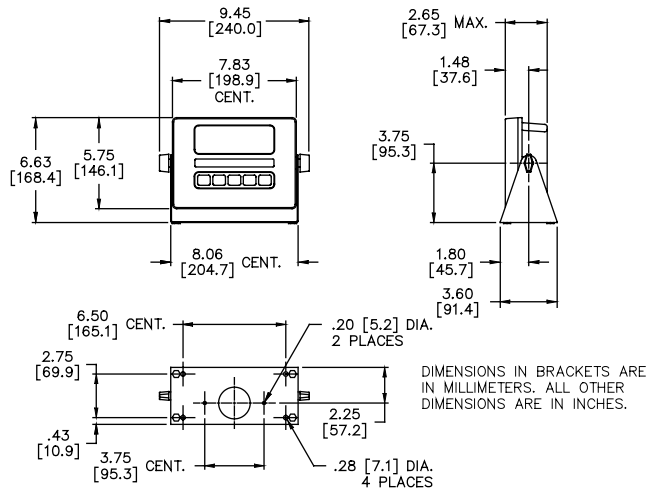
The FB 350 keypad is simple to operate using its five keypad commands: Zero, Print, Units, Tare and Select. Each key on the FB 350 keypad also performs a secondary function when in the Weigh Mode, Set Up Mode or Calibration Mode. Secondary functions for each key allow you to easily configure the FB 350 to perform highly complex tasks.

**SPECIFICATIONS**

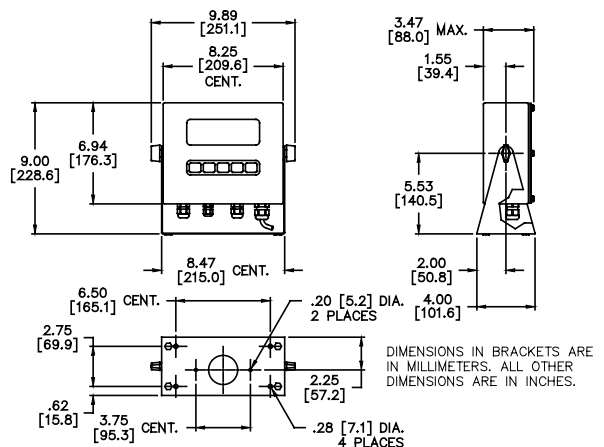
- Display Size . . . . . LED: 0.8" high, 6-digit, 11 LED annunciators for operational status enclosure  
LCD: 1" high, 6-digit, 11 LCD annunciators for operational status, includes LCD checkweigh/ sort bar enclosure
- Enclosure . . . . . Zinc Die Cast black powder coat paint, self-standing on flat surface;  
Stainless steel, designed to NEMA 4X, IP65 includes swivel bracket/stand
- Pushbutton Keys . . . . . Zero/Clr, Print, Units, Tare, Select/On
- Units . . . . . lb, kg, oz, g, lb-oz
- Capacity . . . . . Selectable 0 to 999,990
- Graduation Size . . . . . 0.001 lb to 50 lb
- Load Cells . . . . . Six 350 ohm cells
- Power Requirements . . . . . Zinc Die Cast enclosure: 12-26 VAC / 12-36 VDC  
Stainless enclosure: 90-250 VAC / 12-36 VDC
- Serial Interface Standard . . . . . RS 232 bi-directional
- Accessories . . . . . See chart on pg. 4
- Approvals . . . . . NTEP COC #02-091; Canadian Weights and Measures #AM-5257

**ZINC DIE CAST ENCLOSURE**

(Shown with optional stainless steel bracket)



**STAINLESS STEEL ENCLOSURE**



## FB 350 SERIES DIGITAL INDICATOR ACCESSORIES & SPECIFICATIONS

Product #	Module Description	Specifications
23509	Output Relay Module (See Note #1)	# of Outputs: 3 N.O. contacts
		Voltage Range: 20-240VAC@1A
		Mounting: Zinc Die Cast models install internally; SST models install on Analog Output Option Bracket (23513)
23535	Output Relay Module (See Note #1)	# of Outputs: 3 N.O. contacts
		Voltage Range: 5-60VAC@2A
		Mounting: Zinc Die Cast models install internally; SST models install on Analog Output Option Bracket (23513)
23510	Output Relay Module w/ Option Bracket (See Note #1)	# of Outputs: 3 N.O. contacts
		Voltage Range: 20-240VAC@1A
		Mounting: SST models only; installs internally to mount an additional Analog Output Module (23511)
23536	Output Relay Module w/ Option Bracket (See Note #1)	# of Outputs: 3 N.O. contacts
		Voltage Range: 5-60VAC@2A
		Mounting: SST models only; installs internally to mount an additional Analog Output Module (23511)
23511	Analog Output Module (See Note #1)	Output Range: Isolated, 0-10 VDC, 0-20mA or 4-20mA
		Resolution: 16 bit
		Mounting: Zinc Die Cast models install internally; SST models install on Output Relay Option Bracket (23513)
23512	Analog Output Module w/ Option Bracket (See Note #1)	Output Range: Isolated, 0-10 VDC, 0-20mA or 4-20mA
		Resolution: 16 bit
		Mounting: SST models only; install internally to mount an additional Output Relay Module (23509, 23535)
23513	Option Mounting Bracket	SST models only. Mounts 1 analog Output Module only or 1 Output Relay Module only
23514	Battery Module SST Models (See Note #2)	Type: NiMH (Nickel Metal Hydride) 12 VDC, 1.3A Hr.
		Recharge Circuit: Installs in indicator w/battery, Smart Charge circuitry senses AC power
		Cycle: Continuous; 20 hrs.w/LCD, 8 hrs w/LED
23515	Battery Module	Zinc Die Cast models only
23516	RS 485 Module (See Note #3)	Optically isolated; 1/2 or full duplex; distance 4000'; 9600 bps max; replaces comm. port
23517	20mA Current Loop	Optically isolated; TX-Active or Passive; RX-Passive only; 9600 bps max; 12 VDC; 1000' drop
23518	Panel Mount Kit	Zinc Die Cast models only; mounts zinc FB350 to electrical panel
23519	Swivel Bracket/Stand	For Zinc Die Cast models; standard on SST models

### NOTES:

**#1** — One each of the Output Relay Module and Analog Output Module can be installed in the FB 350. No Option Bracket is required for the Zinc Die Cast models. When ordering both the Output Relay Module and Analog Output Module for the stainless steel models, one model **must** be ordered with an "Option Bracket" and the other as a module only.

**#2** — Battery Module **cannot** be installed in the indicator enclosure when an Output Relay Module or Analog Output Module is installed.

**#3** — When installed, the RS485 Module or the 20mA Current Loop communications options **replace** the RS232 port. The RS485 module and the 20mA Current Loop **cannot** be installed together in a FB 350.

Your Fairbanks Scales Authorized Representative is:

Call toll-free for the representative nearest you:

**(800) 451-4107**

Call between 8:00 a.m. – 5:00 p.m. CST

Corporate Offices: 821 Locust • Kansas City, MO 64106 • (816) 471-0231

Internet Address: <http://www.Fairbanks.com>



St. Johnsbury manufacturing  
facility registered in  
compliance with ISO 9002.

