



Safety laser scanners
S200, Laser scanner

S20B-1011BA



Model Name > [S20B-1011BA](#)
Part No. > [1026823](#)



At a glance

- Category 2 safety solution
- Extremely compact design
- 270° scan angle
- Selectable resolutions
- Vertical and horizontal safeguarding
- 1.5 m protective field range
- 1 protective/warning field

Your benefits

- The most economical safety solution for category 2 applications
- Flexible safety solution for individual application integration
- Compact design for easy integration
- Economical unbeatable, thanks to superior 270° scan angle



Applications

| | |
|---|---|
| Hazardous area protection (vertical): | ✓ |
| Access protection (vertical): | ✓ |
| Hazardous area protection (horizontal): | ✓ |

Functions

| | |
|--|---|
| Static control outputs for switching between warning fields: | - |
| Incremental encoder inputs: | - |
| External device monitoring: | ✓ |
| Reflector mark detection: | - |
| Expanded measured data output: | - |
| Safe device communication via EFI/SDL: | - |

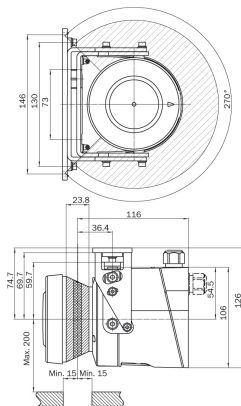
Technical data

| | |
|-------------------------|--|
| Laser protection class: | 1 (21 CFR 1040.10 und 1040.11, IEC 60825-1:2001) |
| Enclosure rating: | IP 65 (EN 60529) |
| Protection class: | II (EN 50178) |
| Type: | Type 2 (IEC/EN 61496-1) |
| Safety integrity level: | SIL1 (IEC 61508), SILCL1 (EN 62061) |
| Category: | Category 2 (EN ISO 13849) |

| | |
|--|---|
| Test rate (internal test): | 12 /s (EN ISO 13849) |
| Maximum demand rate: | 7 /min (EN ISO 13849) ¹⁾ |
| Performance level: | PL c (EN ISO 13849) |
| PFHd: | 5.29 * 1E-08 |
| TM (Mission Time): | 20 a |
| Ambient operating temperature from ... to: | -10 °C ... 50 °C |
| Dimensions (W x H x D): | 102 mm x 152 mm x 105 mm |
| Weight: | 1.2 kg |
| Scan angle: | 270 ° |
| Protective field range: | 1.5 m |
| Maximum warning field range: | 8 m |
| Number of field sets: | 1 |
| Response time: | 80 ms |
| Resolution: | 30 mm, 40 mm, 50 mm, 70 mm, selectable |
| Distance measuring range: | 30 m |
| Number of multiple samplings: | Configurable via CDS 2 ... 16 |
| Electrical connection: | Plug-in connection housing with screw, screw-type terminals |
| Supply voltage: | 16.8 V DC, 24 V DC, 30 V DC |
| Number of EDM inputs: | 1 |
| Number of reset-/restart inputs: | 1 |
| Number of stand-by inputs: | 1 |
| Number of safe outputs: | 2, Safety outputs (OSSD) |
| Number of warning field outputs: | 1 |
| Number of application diagnostic outputs: | 1 |
| Maximum output current: | 250 mA |
| Configuration and diagnostics interface: | RS-232 |

1) Between two demands on a safety-related response of the device, at least 100 internal or external tests must be carried out.

Dimensional drawing



Australia

Phone +61 3 9497 4100
1800 334 802 – tollfree
E-Mail sales@sick.com.au

Belgium/Luxembourg

Phone +32 (0)2 466 55 66
E-Mail info@sick.be

Brasil

Phone +55 11 3215-4900
E-Mail sac@sick.com.br

Canada

Phone +1(952) 941-6780
1 800-325-7425 – tollfree
E-Mail info@sickusa.com

Ceská Republika

Phone +420 2 57 91 18 50
E-Mail sick@sick.cz

China

Phone +852-2763 6966
E-Mail ghk@sick.com.hk

Danmark

Phone +45 45 82 64 00
E-Mail sick@sick.dk

Deutschland

Phone +49 211 5301-301
E-Mail kundenservice@sick.de

España

Phone +34 93 480 31 00
E-Mail info@sick.es

France

Phone +33 1 64 62 35 00
E-Mail info@sick.fr

Great Britain

Phone +44 (0)1727 831121
E-Mail info@sick.co.uk

India

Phone +91-22-4033 8333
E-Mail info@sick-india.com

Israel

Phone +972-4-999-0590
E-Mail info@sick-sensors.com

Italia

Phone +39 02 27 43 41
E-Mail info@sick.it

Japan

Phone +81 (0)3 3358 1341
E-Mail support@sick.jp

Magyarország

Phone +36 1 371 2680
E-Mail office@sick.hu

Nederlands

Phone +31 (0)30 229 25 44
E-Mail info@sick.nl

Norge

Phone +47 67 81 50 00
E-Mail austefjord@sick.no

Österreich

Phone +43 (0)22 36 62 28 8-0
E-Mail office@sick.at

Polska

Phone +48 22 837 40 50
E-Mail info@sick.pl

România

Phone +40 356 171 120
E-Mail office@sick.ro

Russia

Phone +7 495 775 05 30
E-Mail info@sick.ru

Schweiz

Phone +41 41 619 29 39
E-Mail contact@sick.ch

Singapore

Phone +65 6744 3732
E-Mail admin@sicksgp.com.sg

South Africa

Phone +27 11 472 3733
E-Mail info@sickautomation.co.za

South Korea

Phone +82-2 786 6321/4
E-Mail info@sickkorea.net

Slovenija

Phone +386 (0)1-47 69 990
E-Mail office@sick.si

Suomi

Phone +358-9-25 15 800
E-Mail sick@sick.fi

Sverige

Phone +46 10 110 10 00
E-Mail info@sick.se

Taiwan

Phone +886 2 2375-6288
E-Mail sales@sick.com.tw

Türkiye

Phone +90 216 528 50 00
E-Mail info@sick.com.tr

United Arab Emirates

Phone +971 4 8865 878
E-Mail info@sick.ae

USA/México

Phone +1(952) 941-6780
1 800-325-7425 – tollfree
E-Mail info@sickusa.com

More representatives and agencies
at www.sick.com