

Pakedge series switches can be used for single switch networking only at present. In this guide the Pakedge SX-24P is used as an example.

Please note: If using POE with the NHD-000-CTL ensure that POE is disabled to one of the ports.

Logging in to the Switch

1. Connect your PC to the switch and configure it's IP address to the same range of the switch (default 192.168.1.xxx). Enter the switch's web login IP address (default is **192.168.1.205**) to your browser and then press **Enter**.

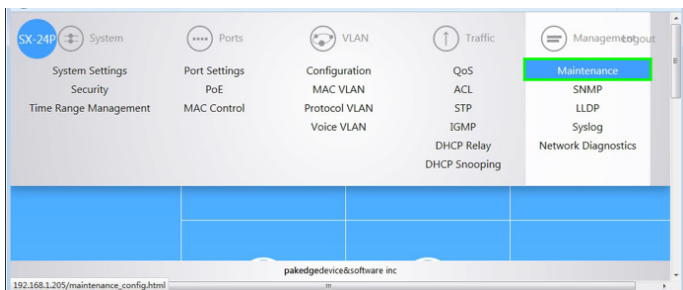


2. Input your username (default is "**pakedge**") and password (default is "**pakedges**")
3. Then click **Log In**.

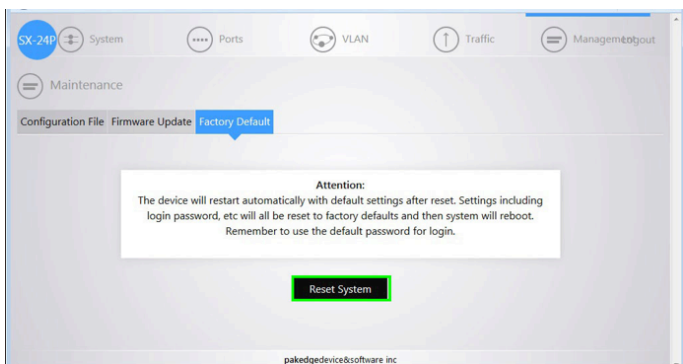
Resetting to Factory Defaults

It is highly recommended that before starting you reset the switch to its factory default settings.

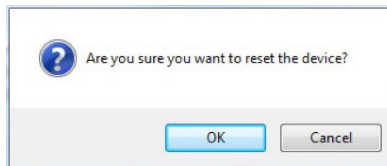
1. Choose **Management > Maintenance**.



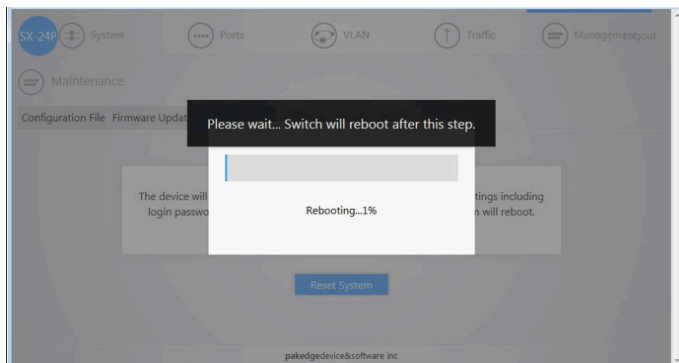
2. Choose **Factory Default**, then click **Reset System**.



The following prompt appears.



3. Just click **OK**, the following screen appears.

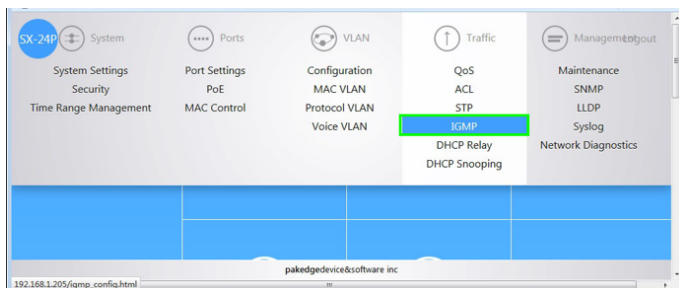


Please wait until the switch completes the rebooting, you will need log in to the switch again.

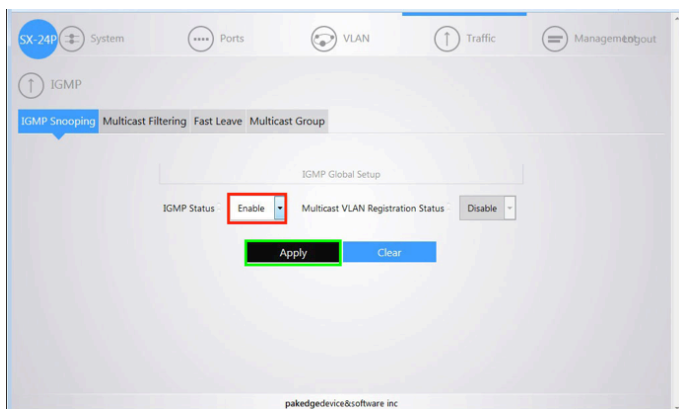
IGMP Configuration

Basic configuration

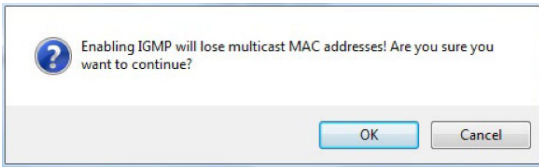
1. Choose **Traffic > IGMP**



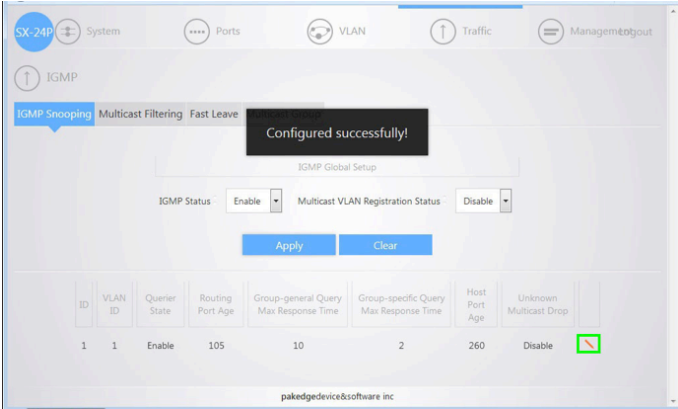
2. Select **Enable** in the dropdown list of the item IGMP Status. Then click **Apply**.



The following prompt appears.

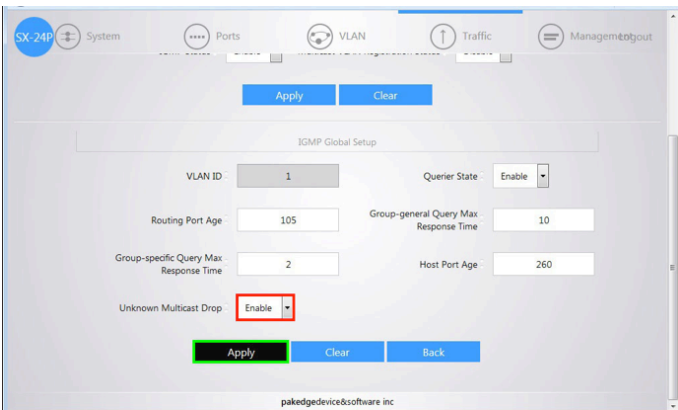


3. Click **OK** and the following screen appears.

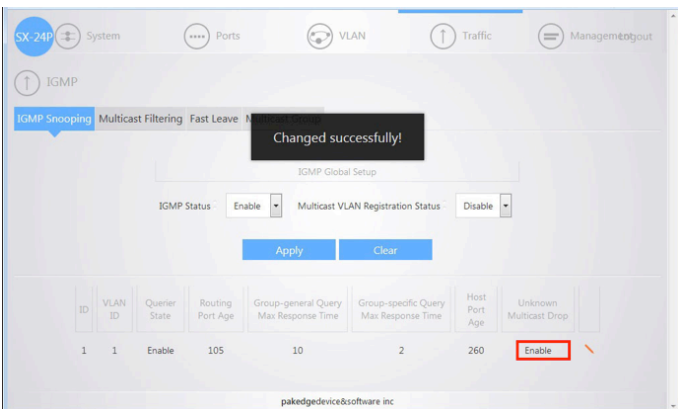


As shown in the figure above and marked by the green frame, move your mouse to the first row of the list, then click the pencil icon on the left.

Scroll down the page and select **Enable** in the dropdown list of **Unknown Multicast Drop**, then click **Apply**.



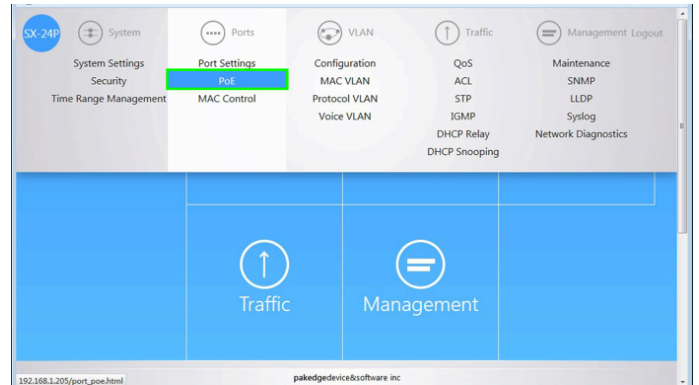
The switch will show a successful notification, in the first row of the list, the value of the column **Unknown Multicast Drop** should now say **Enable**, as marked by the red frame.



PoE Configuration

For PoE switches, make sure to disable PoE in ports that are not used to power PoE devices and on one port of the NHD-000-CTL. For non-PoE switches, skip the following steps. This example shows how to disable PoE in ports 17-24 that are not used to power PoE devices.

1. Choose **Ports -> PoE**.



2. Select the ports not used to power PoE devices by clicking the corresponding icons. Once an icon selected, it will turn blue to indicate that the port is selected.

Please note: In the example, we assume that ports 17-24 are not used to power PoE devices. If actual applications vary, select ports according to the site's situation.



Scroll down the page and select **Disable** in the dropdown list of the item **PoE Power Status**, then click **Apply**.



The round icons, marked with red frames, corresponding to ports 17-24 are gray which mean that PoE features are turned off.

