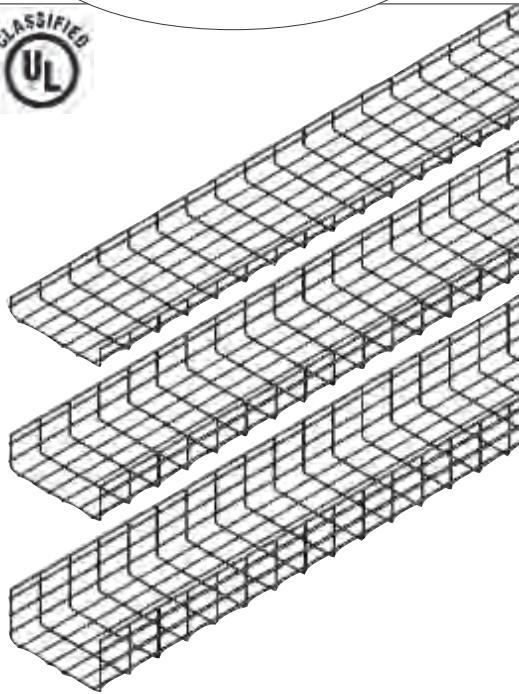


Sold by:



# ONTRAC® WIRE MESH CABLE TRAY SYSTEM



## OnTrac® Wire Mesh Cable Tray System

CPI's OnTrac® Wire Mesh Cable Tray System creates point-to-point pathways for network cabling in data centers, network equipment rooms and office spaces. The OnTrac Wire Mesh Cable Tray System can be cut and formed into smooth turns and transitions easily adapting to most locations. The tray provides excellent load bearing capability and protection for cables and is UL Classified for suitability as an equipment grounding conductor. Choose from various supports to attach the tray to the ceiling, wall or under access floors to create a pathway for network cables.

### Features:

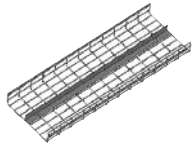
- Constructed from 5 mm and 6 mm diameter steel wires, welded on 2" x 4" (50 mm x 100 mm) intersections
- Available in three heights 2" (50 mm), 4" (100 mm) and 6" (150 mm) and various widths in standard 10'L (3 m) sections
- Cut and bend to form smooth curved transitions around obstacles
- UL Classified for suitability as an equipment grounding conductor only.
- Pre-galvanized, Black powder coat paint finish or Zinc Electroplate\*
- Side walls are 2" (50 mm), 4" (100 mm) and 6"H (150 mm) to support different cable fill capacities

Part Number &			Nominal Dimensions		Cable Fill Area		Shipping Weight lb (kg)
Pre-Galvanized*	Black Paint	Zinc Plate**	Height in (mm)	Width in (mm)	in <sup>2</sup>	mm <sup>2</sup>	
34811-604	34811-704	34811-504	2 (50)	4 (100)	7.8	4 999	11 (5.0)
34811-606	34811-706	34811-506	2 (50)	6 (150)	11.3	7 258	12 (5.4)
34811-608	34811-708	34811-508	2 (50)	8 (200)	15.2	9 798	14 (6.4)
34811-612	34811-712	34811-512	2 (50)	12 (300)	23.1	14 879	17 (7.7)
34811-616	34811-716	34811-516	2 (50)	16 (400)	31.3	20 161	20 (9.1)
34811-618	34811-718	34811-518	2 (50)	18 (450)	35.3	22 741	21 (9.5)
34811-620	34811-720	34811-520	2 (50)	20 (500)	38.8	25 040	23 (10.6)
34811-624	34811-724	34811-524	2 (50)	24 (600)	47.7	30 766	26 (11.8)
34821-604	34821-704	34821-504	4 (100)	4 (100)	14.6	9 419	14 (6.4)
34821-606	34821-706	34821-506	4 (100)	6 (150)	22.5	14 516	16 (7.3)
34821-608	34821-708	34821-508	4 (100)	8 (200)	30.3	19 548	18 (8.7)
34821-612	34821-712	34821-512	4 (100)	12 (300)	46.1	29 741	21 (8.5)
34821-616	34821-716	34821-516	4 (100)	16 (400)	61.8	39 870	24 (10.9)
34821-618	34821-718	34821-518	4 (100)	18 (450)	69.7	44 967	25 (11.3)
34821-620	34821-720	34821-520	4 (100)	20 (500)	78.3	50 516	27 (12.2)
34821-624	34821-724	34821-524	4 (100)	24 (600)	95.3	61 483	30 (13.6)
34831-608	34831-708	34831-508	6 (150)	8 (200)	45.6	29 395	22 (10.0)
34831-612	34831-712	34831-512	6 (150)	12 (300)	69.1	44 580	25 (11.3)
34831-616	34831-716	34831-516	6 (150)	16 (400)	92.8	59 870	28 (12.7)
34831-618	34831-718	34831-518	6 (150)	18 (450)	104.6	67 483	29 (13.2)
34831-620	34831-720	34831-520	6 (150)	20 (500)	116.4	75 096	31 (14.1)
34831-624	34831-724	34831-524	6 (150)	24 (600)	143.0	92 257	34 (15.4)

\*Pre-galvanized is UL Classified in US only. \*\*Longer lead times when ordering Zinc Electroplate part numbers.



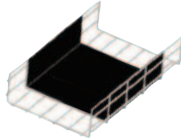
Accessories (continued from page 5)



**Cable Tray Divider**

- Use to divide the internal area of a section of wire mesh cable tray to organize cables by type or zone
- Hemmed top and bottom edge protects cables
- Attaches to the tray with two splice washers from the Splice Washer & Bolt Kit (P/N 34728-X01)
- Manufactured from steel
- Plain galvanized finish

Part Number	Description Height in - (mm)	Shipping Weight lb (kg)
34743-502	For 2 (50) Tray	3 (1.4)
34743-504	For 4 (100) Tray	5 (2.3)
34743-506	For 6 (150) Tray	7 (3.2)



**Cable Tray Liner**

- Use to create a solid base and sides within the tray to protect cables
- Creates a fiber friendly cable pathway solution
- Black polymer material, pre-scored to match tray depth
- UL 94V-0 flame class rating, RoHS compliant
- Non-hydroscopic (moisture absorption <0.1%)
- Temperature range to 239°F (115°C)
- Each part number indicates a 10'L (3 m) section, ships in a continuous roll

Part Number Cable Tray Height in (mm)			Description Width in - (mm)	Shipping Weight lb (kg)
2 (50)	4 (100)	6 (150)		
34142-704	34144-704	-	For 4 (100) Tray	1 (0.5)
34142-706	34144-706	-	For 6 (150) Tray	1 (0.5)
34142-708	34144-708	34146-708	For 8 (200) Tray	1 (0.5)
34142-712	34144-712	34146-712	For 12 (300) Tray	1 (0.5)
34142-716	34144-716	34146-716	For 16 (400) Tray	1 (0.5)
34142-718	34144-718	34146-718	For 18 (450) Tray	1 (0.5)
34142-720	34144-720	34146-720	For 20 (500) Tray	1 (0.5)
34142-724	34144-724	34146-724	For 24 (600) Tray	1 (0.5)



**Auxiliary Side Bracket**

- Use to create a physically separate pathway for cable support alongside the tray
- Hangs on the side of the tray, provides a 2"D (50 mm) shelf for auxiliary cables
- Manufactured from steel
- Sold individually

Part Number & Finish		Description	Shipping Weight lb (kg)
Pre-Galv	Black		
34136-601	34136-701	Auxiliary Side Bracket	3 (1.4)



**Section Support Bracket**

- Use to fill the gaps created when cable trays are cut and formed into turns
- Hangs on the side of the tray
- Manufactured from steel wires
- Sold individually

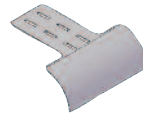
Part Number & Finish		Description	Shipping Weight lb (kg)
Pre-Galv	Black		
34137-601	34137-701	For 2"H (50 mm) Tray	2 (0.9)
34137-602	34137-702	For 4"H (50 mm) and 6"H (150 mm) Tray	2 (0.9)



**Label Holder**

- Use to label a section of wire mesh cable tray to identify the pathway or a drop location
- Attaches to the side or bottom of the tray
- Manufactured from white PVC plastic
- Sold in packs of 10

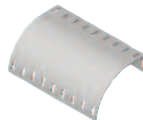
Part Number	Description	Shipping Weight lb (kg)
34749-001	Label Holder, Pack of 10	1 (0.5)



**Tool-Less Radius Drop**

- Use to properly support cables as they exit or enter cable tray pathways
- Provides a wide radius featuring tool-less attachment that requires no cutting of the tray during installation
- Secures cables through slots in the radius drop with cable straps or ties
- Attaches to the bottom of the tray with bendable tabs that lock the radius drop in place
- Can also be attached to the bottom of the tray with a splice washer from the Splice Washer & Bolt Kit (P/N 34728-X01)
- Manufactured from steel
- Sold individually

Part Number & Finish		Description	Shipping Weight lb (kg)
Zinc	Black		
34741-501	34741-701	Tool-Less Radius Drop	1 (0.5)



**Large Radius Drop**

- Use to properly support cables as the cables exit or enter cable tray pathways
- Secures cables through slots in the radius drop with cable straps or ties
- Attaches to the bottom or side of the tray with two splice washers from the Splice Washer & Bolt Kit (P/N 34728-X01)
- Manufactured from steel
- Sold individually

Part Number & Finish		Description	Shipping Weight lb (kg)
Zinc	Black		
34747-501	34747-701	Large Radius Drop	1 (0.5)



**Vertical Radius Bracket**

- Use to provide a curved support for cables exiting tray vertically
- Attaches to the bottom of the tray with bendable tabs that lock the vertical radius in place
- Can also attach to the bottom of the tray with two splice washers from the Splice Washer & Bolt Kit (P/N 34728-X01)
- Manufactured from steel
- Sold individually

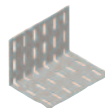
Part Number & Finish		Description	Shipping Weight lb (kg)
Pre-Galv	Black		
34139-601	34139-701	Vertical Radius Bracket	3 (1.4)



**Conduit Bracket**

- Use to attach up to three conduits, sizes 1/2", 3/4" or 1" (20 mm, 25 mm or 32 mm) to the side of the tray
- Allows secure distribution of cables from tray
- Attaches to the bottom of the tray with bendable tabs that lock the conduit bracket in place
- Can also attach to the bottom of the tray with two splice washers from the Splice Washer & Bolt Kit (P/N 34728-X01)
- Manufactured from steel
- Sold individually

Part Number & Finish		Description	Shipping Weight lb (kg)
Pre-Galv	Black		
34135-601	34135-701	Conduit Bracket	3 (1.4)



**Electrical Box Bracket**

- Use to attach a single, dual or triple gang junction box to the side of the tray
- Allows electrical or network connections to be attached to the side of the tray
- Attaches to the tray with a Clamp Washer (P/N 34746-X01) and Carriage Bolt Hardware (P/N 34728-X02)
- Manufactured from steel
- Sold individually

Part Number & Finish		Description	Shipping Weight lb (kg)
Pre-Galv	Black		
34138-601	34138-701	Electrical Box Bracket	3 (1.4)

