

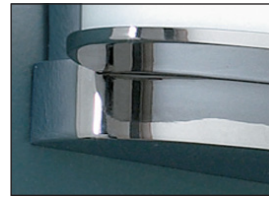
Finish selection varies from fixture to fixture, consult shaperlighting.com and individual fixture spec sheets for finish options



(NA) Natural Aluminum



Satin Chrome (SC)



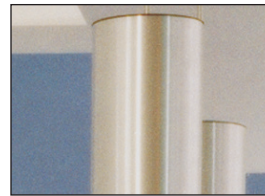
Polished Chrome (PC)



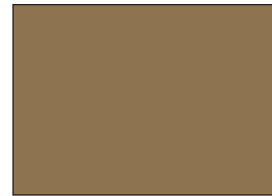
Matte Black Paint (MB)



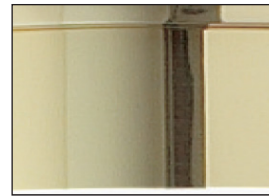
Satin Nickel (SN)



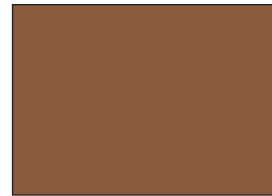
Polished Nickel (PN)



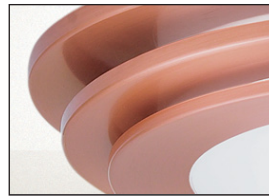
Satin Brass (SB)



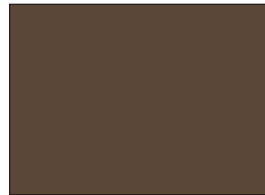
Polished Brass (PB)



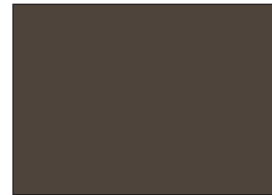
Satin Copper (SCP)



Polished Copper (PCP)



Oxidized Copper (OCP)



Oxidized Brass (OBRS)
Interior



Gun Metal (GNM)



Matte White Paint (MW)



Shaper Lighting
1141 Marina Way South
Richmond, California 94804
Ph 510.234.2370
Fax 510.234.2371
Shaperlighting.com

International Sales, USA
Peachtree City, Georgia

Customer First Center
1121 Highway 74 South
Peachtree City,
Georgia 30269
Ph 770.486.4800
Fax 770.486.4801

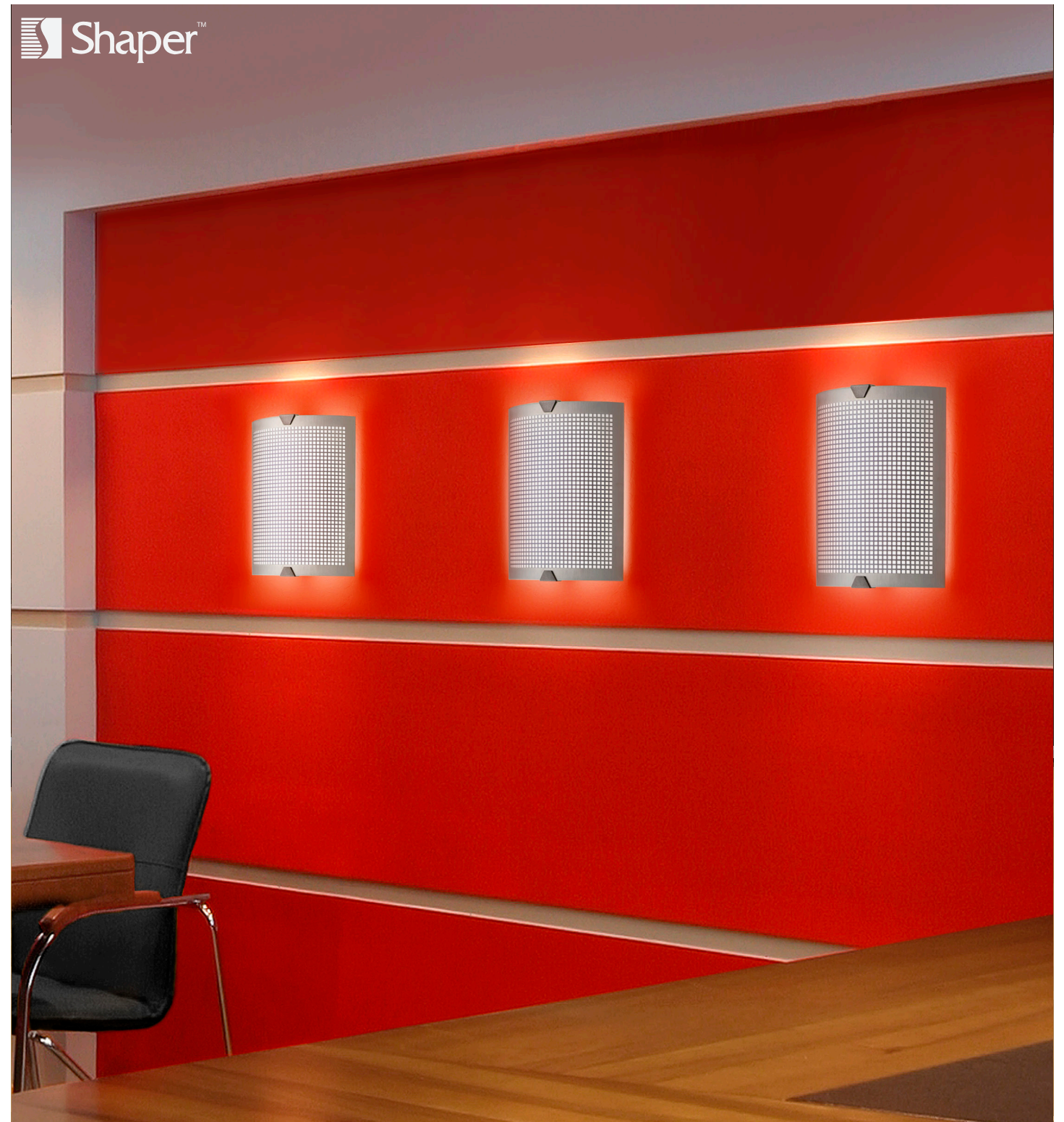
Domestic Facilities, USA

Cranbury, New Jersey, Elk
Grove Village, Illinois, Irving,
Texas, Ontario, California,
Peachtree City, Georgia

Canada
Cooper Lighting
5929 McLaughlin Road
Mississauga, Ontario L5R 1B8
Ph 905.507.4000
Fax 905.568.7049

Domestic Facilities, Canada

Calgary, Alberta, Chomedey,
Laval P.Q.



LED Solutions

Shaper LED Solutions-Wall Sconces



Shaper LED Solutions-Wall Sconces

About

Shaper Lighting has always offered sustainable finishes such as NA (Natural Aluminum) and OCP (Oxidized Copper). To complement the sustainable programs, we are introducing our first LED lighting solutions as part of our wall sconce offering to fulfill your architectural requirements. These LED fixtures can be finished with a variety of options to add a style element to any space.

Dimmable

Setting the mood with light is important to the design of any space. With Shaper's LED Solutions, dimming is offered as a standard feature in our LED systems. For additional dimming options consult factory. Lumen output varies from 1300-5000 lumens.

LED Life

Our LED systems are rated for 50,000 hour life and are backed by a 5 year warranty. Electronic drivers are available for 120-277V applications; 0-10V dimming control is standard.

Labels

cULus approved for interior locations only IP20 rated, Consult factory for other international applications.

Installation

For installation instructions for these LED fixtures, please refer to shaperlighting.com

Color Temperature

Color temperatures available: 2700,3000,3500,4000K CRI-85+

Color consistency is within 3 McAdam ellipses.

REM/IEM

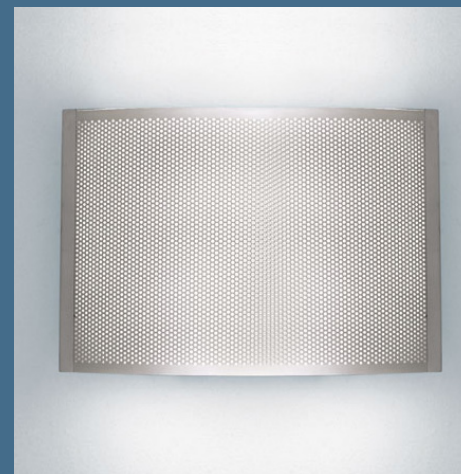
For REM/IEM specifications consult individual product specs.

Modifications

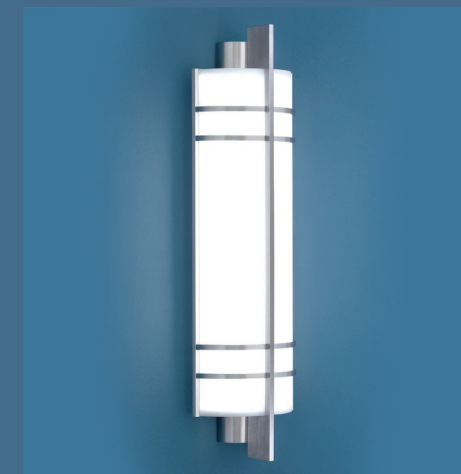
Shaper's skilled craftspeople with their depth of experience offer the designer the flexibility to modify LED luminaries for project specific solutions, utilizing standardized LED components.

Walls that need a centerpiece can be enhanced with our artfully designed 635, 658, and 662 fixtures where the light glows through a curved luminous shield. For something more simple and geometric, Shaper's 641 is a great option for indirect lighting in a quarter-sphere design and comes available in unique finish options.

For more spacious areas, the 600 and 605 can illuminate more area, with length between 24 and 36 inches. The 674 and 673 are just as capable with more decorative elements such as horizontal trim bars and vertical fin details.



635
Pictured left and above is the 635 with LED lamp with a perforated shield, finished Oxidized Brass.



674
674 with LED lamp interior wall luminaire with open top and bottom, and matte white acrylic panel.



673
Pictured above 673 with LED lamp, ideal for locations that require a larger field of illumination. Interior wall luminaire with an aluminum frame and acrylic diffuser. Various styles and options are listed on the spec sheet.



662
Interior Wall Luminous Curved Shield Luminaire with LED lamp with a Natural Aluminum finish. ADA Compliant



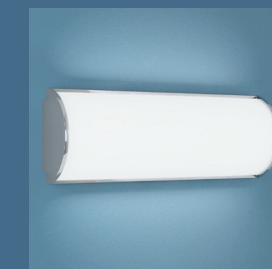
658
Interior Wall Luminous Shield Luminaire with LED lamp and white acrylic diffuser. ADA Compliant



641
Interior Wall Quarter Sphere Luminaire with a LED lamp and Lacquered Satin Aluminum



600
Interior Wall Luminous Vanity Luminaire with LED lamp. Steel end caps, an aluminum body, and an acrylic white diffuser. ADA Compliant



605
Interior Wall Luminous Half Cylinder Luminaire with LED lamp in a plated solid aluminum frame with enclosed top. ADA Compliant

