

How to use ASIAIR with Sky-Watcher AZ-GTi Mount

1 Preparations

| Equipment | Manufacturer | Hardware | Software |
|--------------|--------------|------------------------|-------------|
| ASIAIR | ZWO | ASIAIR | ASIAIR |
| AZ-GTi Mount | Sky-Watcher | Mount | SynScan Pro |

With the use of the above equipment will achieve through the App, please go to Google Play or App Store to download and install.

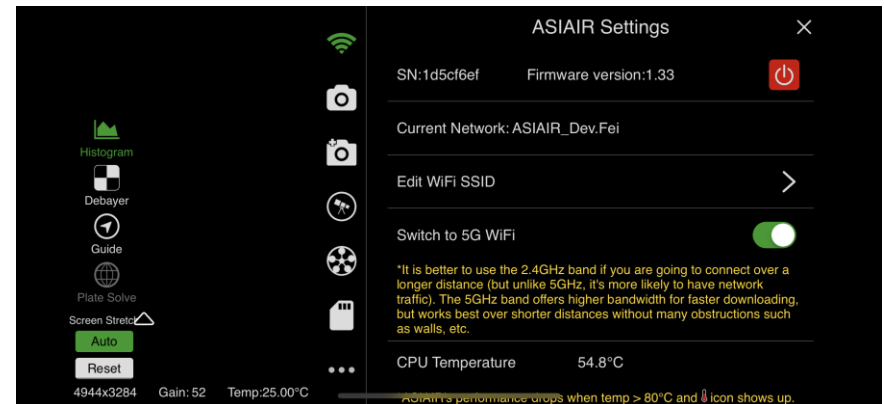
In addition to the equipment listed above, a telescope, camera, tripod, power supply, etc. are required to fully assemble and start shooting. This guide does not cover the work of these devices, you can refer to their instruction documents.


二、Detailed Settings

** By default, you have assembled the hardware part of the device.*

2.1 Switch ASIAIR WiFi Band

ASIAIR uses 5G band WiFi by default, while AZ-GTi Mount uses 2.4G, so you need to switch the ASIAIR WiFi band to 2.4G. Open the ASIAIR App,



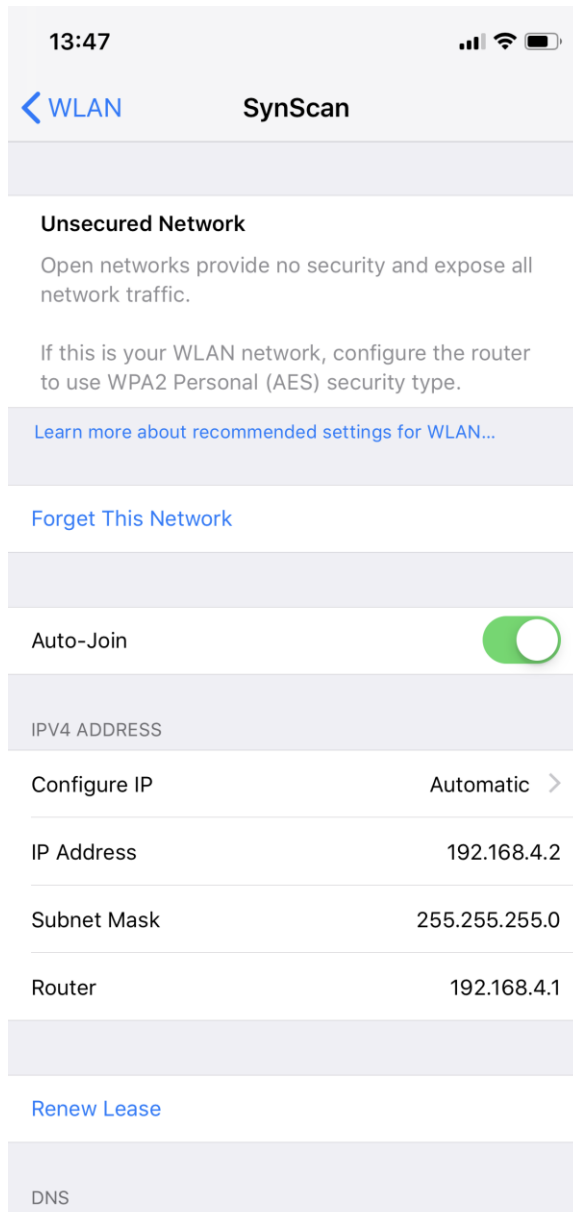
Press  to switch to 2.4G.

ASIAIR WiFi SSID is **ASIAIR_Dev.Fei** which will be used later.

2.2 AZ-GTi Mount WiFi Settings

Connect your mobile devices to AZ-GTi Mount's WiFi, the SSID is **SynScan**, you needn't to input password because it's an open network.

After connecting (e.g. with *iPhoneX iOS 12.0.1*):



Open **SynScan Pro**, click **Connect** button on the top, then go to **Settings > Wi-Fi Setting**, check **Modify Station**. Typical settings:

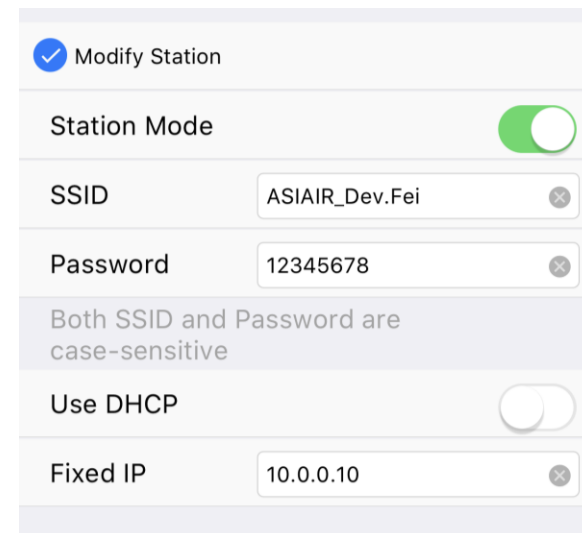
Station Mode, On;

SSID, your ASIAIR WiFi SSID, here is **ASIAIR_Dev.Fei**;

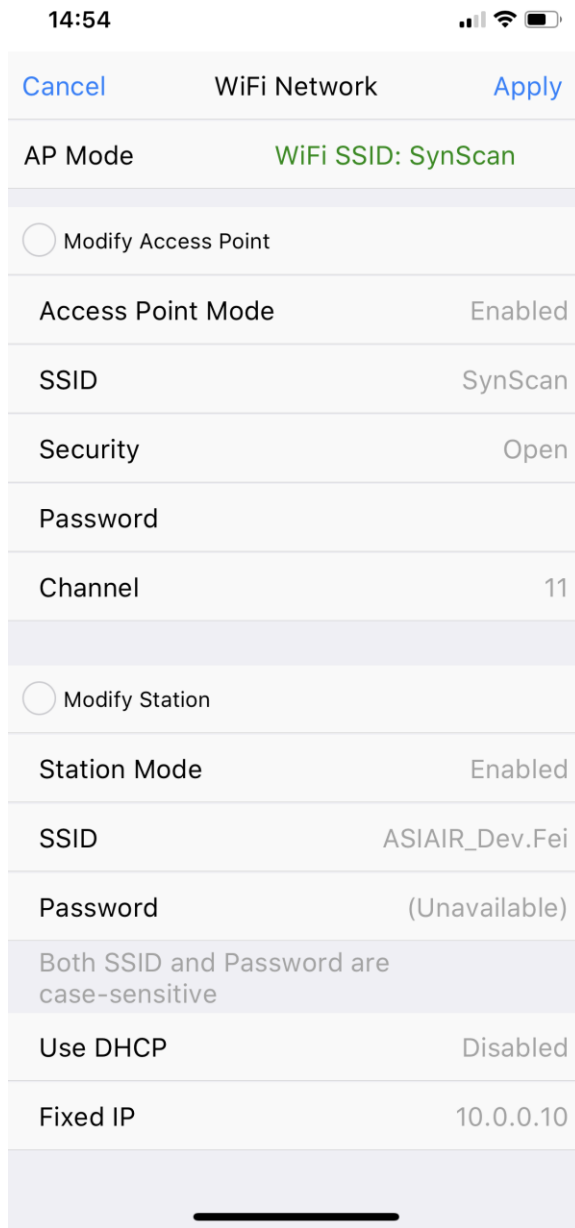
Password, ASIAIR WiFi password **12345678**;

Use DHCP, Off;

Fixed IP, The ASIAIR network segment is 10.0.0.*, here are free to fill in rang 2 to 254. We've chosen a nice address: **10.0.0.10**.



Press **Apply** on the top right, waiting for completion. Then refresh to check the result. If successful,



2.3 Connect ASIAIR to AZ-GTi Mount

Now the AZ-GTi WiFi is working under Station Mode and connected to ASIAIR WiFi. Let's do the connection between ASIAIR and Mount.

Open ASIAIR App, go to **Telescope Settings** interface,

Telescope, Choose **EQMod Mount**, then:

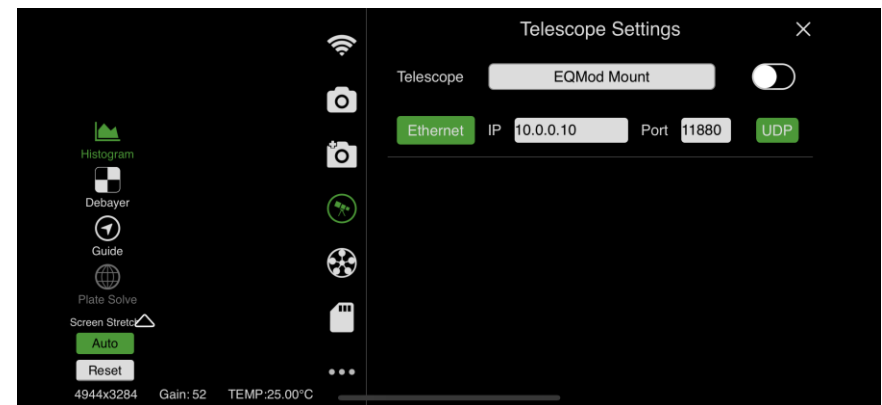
Connect Method, Press to choose **Ethernet**,


IP: 10.0.0.10 (the *Fixed IP* set in 2.2),

Port: 11880 (AZ_GTi Mount default port),

Protocol: Press to choose **UDP**.

As below,



After setting, press  to connect.