

## Come unwind in Natural Beauty...

Our six cozy housekeeping cabins nestled at the base of Little Spencer Mountain are the only cabins on this 980 acre pond. Located 14 miles from our neighbors in Kokadjo, we provide guests with a remote wilderness experience and the chance to relax unfettered by modern electronics. Many people are enjoying the experience of getting closer to the basic things of life. This we encourage. There is no telephone, wi-fi hookup or electricity from a loud generator running late into the evening to jar your nerves. Cell phone coverage is sporadic at best. Plumbing is "out back" and relaxation is everywhere. We offer a return to rustic comfort and simplicity of life intertwined with the great outdoors. Enjoy the



beauty of our pristine natural surroundings. Fish, hike, hunt, canoe, read, nap, mountain bike, photograph, paint, stargaze, build a campfire, sit in a porch rocker and watch the waves go by on the pond. Look for Moose, bear, otters, beaver, deer, on local trails. Fall asleep listening to the loons, the wind blowing through the pines, and the waves lapping against the shore. It is our pleasure to share this remote paradise with you.

## GET UNPLUGGED AUTHENTIC MAINE WILDERNESS LAKESIDE CABINS



Located in the Moosehead Lake  
Region - East Middlesex Canal  
Grant

Mailing Address only: 806 Spencer Pond Rd, Beaver  
Cove ME 04441

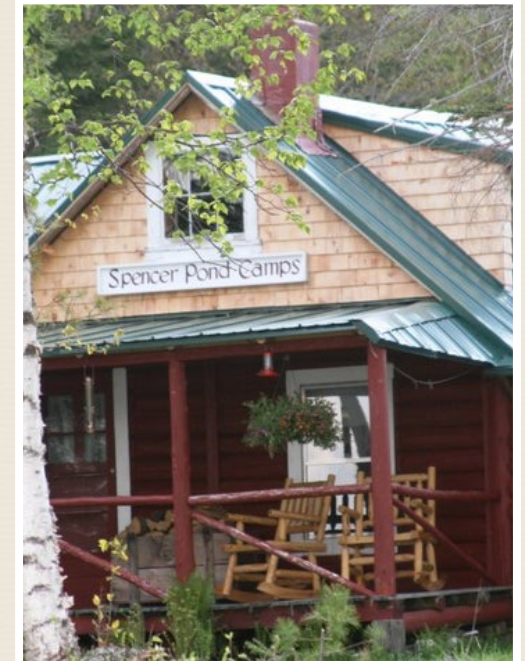


CHRISTINE HOWE - DANA BLACK  
REGISTERED MAINE GUIDES

207-745-1599

<https://spencerpond.com>

## SPENCER POND CAMPS



North Woods Magic  
the way life used to be...



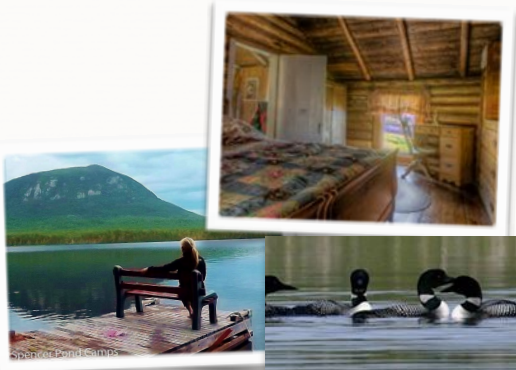
# A FAMILY VACATION THAT IS DIFFERENT

We offer an unique "off the grid" vacation - reconnect your family to the great outdoors!

Authentic Handcrafted Maine Log Cabins - Impressive Mountain View - Lakeside Adventures

Cabin rental includes – fully furnished housekeeping cabin, shared use of docks, canoes, kayaks, and mountain bikes All linens, seasoned dry firewood, plus an authentic remote wilderness experience

<https://spencerpond.com>



Established in 1901 by 19 year old Maine Guide Mose Duty, and originally part of the William Tell Hunting Club (the oldest incorporated hunting club in North America) these cabins offer a historic glimpse into the woods and waters where Thoreau once wandered.



Our fully furnished cabins do not have electricity and are non-modernized by design. The

ambience and conveniences you will find are reminiscent of "Little House in the Big Woods" completely comfortable and functional, but a far cry from the whirring sounds of loud generators, noisy campgrounds, and the distractions of electronic devices, coffee bars, and wifi hookups. This atmosphere conveys and draws you into a world where life comes at a slower pace, simplified, and you can share with your family the way life used to be many years ago. Many of our guests find this is their opportunity to truly get away from it all and go "unplugged" to relax and rejuvenate themselves.



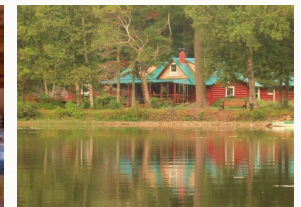
## RUSTIC COZY CABINS:

### SEE WEBSITE FOR PRICING AND AVAILABILITY

We have six rustic cozy cabins on Spencer Pond and one cabin on Moosehead Lake. All of our cabins include beds with linens, a fully equipped kitchen with propane stovetop and oven, propane lights and fridge, rocking chairs, handmade quilts, porches, charcoal grills, library and games, seasoned dry firewood, dish soap, TP.



Twin bedroom inside Moosepaykechick cabin



Sabotowan- The Maine Lodge est. 1901

## FAMILY FRIENDLY ACCOMMODATIONS

Our mission is to provide a comfortable environment for your family to visit and relax. Because of this some of our rules are different than other places - such as 9pm quiet time, an electronic and wi-fi free camp yard, no alcohol in public areas, no vehicles in the camp yard except during arrival/departure. We do however love the sound of children playing in the water, giggling on the swing and running wild through the yard or sitting quietly while they catch their first fish or see their first moose.



Swimming is a pastime enjoyed by kids of all ages



Brook Trout are frequently caught along with Bass, perch, and bullhead

## WILDLIFE - THOUSANDS OF FORESTED TIMBERLANDS - REMOTE PONDS AND BROOKS

Our location in an unorganized township of nearly 22,000 undeveloped acres provides you with a unique opportunity to hike miles of marked trails, explore old woods roads, fish small brooks, the Roach River, or canoe into one of many undeveloped ponds. Bear and moose are frequently seen, as are deer, marten, otters, beavers, and woodland birds. We have spring Turkey hunting and Bear, Moose, Ruffed Grouse, Rabbit, and White-tail deer hunting in fall. Fishing from May - September.



Moose are seen May - November



Maine Black Bear photo by John Major