

# WEBSTER County *Conservation*

## PUBLIC PROGRAM GUIDE



2024



# TABLE OF CONTENTS



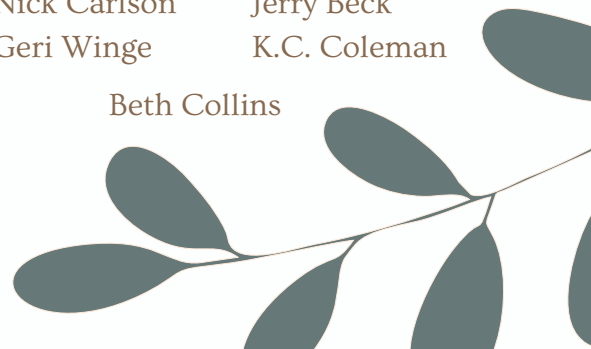
03	WELCOME
04	CAMPS
05-08	PROGRAMS
09	EVENT LIST
10	FRIENDS OF WCC
11	RIVER'S EDGE NATURE CENTER
12	RIVER'S EDGE DONOR FORM
13	CAMPING RESERVATIONS
14-15	FEE SCHEDULE & RENTAL INFO
16-17	GYPSUM CITY OHV PARK
18-21	AREA TRAIL MAPS
22-23	WCCB AREAS & AMENITIES
24	FAQ

## STAFF

Matt Cosgrove	Director
Cody Peterson	Operations Supervisor
Darren Herzog	Park Ranger
Joe Sherbon	Park Ranger
Karen Hansen	Environmental Education Coordinator
Erin Ford	Naturalist
Andy Stanberg	IRVM/Vegetation Specialist
Tasha Nielsen	Trail Technician II
Adam Moeding	Natural Res./Park Technician
Brody Bertram	Natural Res./Trail Technician

## BOARD MEMBERS

Nick Carlson	Jerry Beck
Geri Winge	K.C. Coleman
Beth Collins	

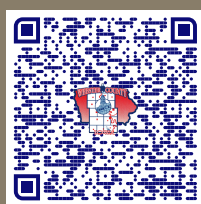


# YOUR 2024 GUIDE TO THE OUTSIDE

The Webster County Conservation Board invites you to explore over 2,000 acres of public parks, wildlife management areas, trails, water trails, Off-Highway Vehicle trails, nature preserves and historic sites. The board appreciates the opportunity to manage YOUR public lands and looks forward to hosting you and your family and friends as you make memories in the scenic Des Moines River Valley of North-Central Iowa! How to Use This Guide: This outdoor guide is designed to be your primary resource for outdoor adventure, programs and facilities in Webster County! The Conservation Department offers reservations for shelters, camping and overnight accommodations through the [www.mycountyparks.com](http://www.mycountyparks.com) website. There are programs that require registration and/or a minimal fee to help cover the cost of the event. Most program registrations can be found by scanning the QR codes at the bottom of each page. Partnership programs will have a QR code next to them to use for non-county registrations, for any inquiries please call [515-576-4258](tel:515-576-4258).

The Webster County Conservation Department creates an electronic newsletter with a variety of information about current conservation and recreation-related topics called "[Pathways to Nature](#)". If you would like to be added to our newsletter list, please send an email to [conservation@webstercountya.gov](mailto:conservation@webstercountya.gov) with "Subscribe" in the subject line.

For additional information about everything Webster County Conservation has to offer scan the QR codes Below.



# CAMPS

TREAT YOUR CHILD TO A FUN SUMMER THEY'LL NEVER FORGET! OUR NATURE CAMPS ENCOURAGE NATURAL CURIOSITY OF THE OUTDOORS AND ENGAGE KIDS IN FUN AND EDUCATIONAL ACTIVITIES.

**Summer program registrations will begin May 1st**



scan to register

## Intro to the Outdoors \$

Loomis Park

N 7th St & Loomis Park Drive, Fort Dodge

Ages 3-4: June 3rd, 4th & 5th 9:30 - 10:15 am

Age 2: June 3rd & 4th 10:30 - 11:00 am

Webster Country Conservation is partnering with the City of Fort Dodge to bring fun nature programs to Loomis Park. Registration is available online at Fort Dodge Parks and Rec.

## Nature Link Day Camp \$

Kennedy Park

1415 Nelson Ave, Fort Dodge

Ages 7-9: June 27th & July 25th 9:00 - 3:00 pm

Each camp will include outdoor nature exploration, activities and snacks. Please bring a lunch, refillable water bottle, old clothes, long pants, closed toed shoes, insect repellent and sunscreen. \$10 per participant, registration required (min participation 8, max 12).

## Summer WILD Camp \$

Camp WaNoKi

2400 WaNoKi Camp Road, Fort Dodge

Ages 10-12: June 24, 25, 28 & July 9, 10, 11 9:00 - 3:00 pm

Boys & Girls - Survival Skills, Land Stewardship, & Shooting Fun

These two camps will cover outdoor skills including fire starting, shelter building, hiking, compass use, orienteering, land stewardship work, archery, atlatls, wildlife, etc. \$30 per participant, registration required (min participation 8, max 12).



# PROGRAMS

## Spring into Spring

Camp WaNoKi

2400 WaNoKi Camp Rd

Families March 16 12--4:00 pm

- Golden antler hunt
- Maple syruping
- Walking sticks DIY
- Dutch oven cornbread
- Bird house giveaway

Bring the family for outdoor fun. Hike the trails at WaNoKi looking for a “golden antler”. Watch how maple syrup is made and taste some on cornbread. Try making your own walking stick. No fee.



## Tuesday at Ten Hikes

Follow Facebook for new hiking locations each month

March 19/ April 16/ May 28/ June 18/ July 16/ Aug. 20/ Sept. 17/ Oct. 15/ Nov. 19/ Dec. 17

10:00 am

Need someone to hike with? Maybe you're a mom of young ones but want to get them all out hiking. This could be one of the best things you do for yourself or your entire family. Join others who love to get outdoors. Go at your own pace, but with the support and safety of others.

## Trick or Treating

Kennedy Park & Gypsum City OHV Campgrounds

1415 Nelson Ave & 2390 Mill Road, Fort Dodge

Families Oct 12th 4:00 - 6:00 pm

Dress in your favorite costume and walk the campgrounds for trick or treating.



## Spring: Evening Hike

Children's Forest

1386 National Ave, Fort Dodge

Families April 23rd 7:00 pm

Get out of the house and bring the family to the Children's Forest parking lot for a evening hike with the naturalist.



# PROGRAMS

## Kids Trap Shoot

ICCC Trap Range

2091 Richmill Road, Fort Dodge

Ages 12-18 Aug 10th 9:00 am - 12:00 pm

Sponsored by Webster County Pheasants Forever, Webster County Conservation & Iowa Central Community College. Call 515-576-4258 to register and for more information.



## Youth Pheasant Hunt

Kennedy Park

1415 Nelson Ave, Fort Dodge

Age 15 and under Oct 19th 8:00 - 12:00 pm

Webster County Conservation is partnering with Pheasants Forever & Iowa Central Community College to provide a mentored youth pheasant hunt. Participants must be 15 or younger. For registration and information please call 515-576-4258.

## Kayaking Beginners Class \$

Kennedy Park, boat ramp

1415 Nelson Ave, Fort Dodge

Ages 13 and up July 11th 6:00 pm

This course covers kayaking basics including safety, personal flotation devices, paddling skills and techniques, entering and exiting kayaks and more. Classes are instructed by Doug Breyfogle, a certified ASA Level 2 kayaking instructor. All equipment will be provided. Open to ages 13 and up. Cost is \$15 per person with 10 participants max.

Payment will be taken at the beginning of class. Contact Webster County at 515-576-4258 for registration. Private lessons are also available.

## Stand Up Paddle Boarding \$

Kennedy Park,

1415 Nelson Ave, Fort Dodge

June/ July & Aug

Call and reserve a date and time for your group to learn the basics of paddle boarding. \$10 per person (max of 4 people due to availability of boards). Call 515-576-4258 to schedule.



# PROGRAMS



Blanden  
registration

## Kids: Artists by Nature \$

Kennedy Park, Children's Forest

1386 National Ave, Fort Dodge

All Ages July 10th, 23rd & Aug 8th 9:30 am

In partnership with the Blanden Art Museum students will combine nature and art to create take home masterpieces. Classes will be outside weather permitting. To register for classes go to <https://www.blanden.org/classes-events> or scan the QR code.



City of Fort  
Dodge  
information

## Kids to Parks Day

Fort Dodge Parks and Rec / Webster County Conservation

Webster County

Families May 18th

Webster County Conservation is partnering with the City of Fort Dodge for National Kids to Parks Day, a day of outdoor play. Find word clues at 3 county & 3 city parks to win prizes, For more information visit [www.fortdodgeiowa.org](http://www.fortdodgeiowa.org) or scan the QR code.



Soldier Creek  
Winery  
registration

## Nature Craft at the Winery \$

Soldier Creek Winery / Webster County Conservation

1584 Paragon Ave, Fort Dodge

Nov 7th & March 6th (2025) 6:30 - 8:30 pm

Webster County Conservation is partnering with Soldier Creek Winery for of their monthly craft nights. Sign up through Soldier Creek Winery's website <https://soldiercreekwinery.com/events/#public-events> or scan the QR code.



Linking  
Families  
registration

## Play & Learn at the Park \$

1415 Nelson Ave & 2400 WaNoKi Camp Rd Fort Dodge

Families 9:00 - 11:00 am

Kennedy Park: June 26th, July 31st & Aug 7th

Camp WaNoKi: June 12, July 17, Aug. 14

Join us for nature fun and exploration as we partner with Fort Dodge Play & Learn for some play at the park days. Visit this website to register <https://www.linking-families.com/play-and-learn-center> or scan the QR code.



# PROGRAMS

## **Fireside Chat Series 6:00 pm**

*Camp WaNoKi*

*2400 WaNoKi Camp Road, Fort Dodge*

The Fireside Chats are open to the public and generally geared for all ages, with families in mind.

Pre-register at [www.mycountyparks.com](http://www.mycountyparks.com)

### **June 27 Primitive Weapons**

A little history lesson about weapons from the past will start this active evening. Join the fun as we offer participants the chance to use a variety of weapons from the past. Dart throwing with atlatls, tomahawks, knives, and slingshots will be offered.

### **July 25 Campfire Cooking**

Learn how to build a campfire for cooking. Different cooking methods will be demonstrated and participants may try one. Different ingredients will be available for sampling.

Participants are encouraged to bring their own pie iron or Dutch oven along with any ingredients to share. This is a great family outdoor activity to utilize at home.

### **Aug 22 Geocaching**

Learn the basics of Geocaching with the use of your cell phone. Geocaching is a popular hobby and a good way to get outdoors to explore the woods as you search for a geocaches. Join us as we go on a quest for some geocaches at Camp WaNoKi. We will have GPS units for use if you don't have the geocaching app on your cell phone.

### **Sept 26 Flint Knapping**

Local knappers, Donnie Arends and Matt Mitchell, will help beginners learn about this ancient art of creating a functional tool from stone. Available will be some examples of different tools that would have been used by people long ago in everyday life. This hands on activity will allow participants to try to create their own "arrowhead" or similar tool.

### **Oct 24 Luminary Night Hike**

Ever hiked in the dark? Enjoy the mysteries of the night with a guide leading the way following a trail of luminaries. Learn about nocturnal woodland animals and their adaptations for survival. Bring a headlamp if you have one; a limited supply will be provided.





# EVENT LIST

## MARCH

16th Spring into Spring Event  
19th Tuesday at Ten Hike

## APRIL

16th Tuesday at Ten Hike  
23rd Spring Evening Night Hike

## MAY

18th National Kids to Parks Day  
28th Tuesday at Ten Hike

## JUNE

7th - 9th Free Fishing Weekend  
3rd - 5th Intro to the Outdoors (3 & 4 yr)  
3rd & 4th Intro to the Outdoors (2 yr)  
12th Play & Learn at Camp WaNoKi  
18th Tuesday at Ten Hike  
24th, 25th & 28th Summer WILD Camp  
26th Play & Learn at Kennedy  
27th Nature Link Day Camp  
27th Fireside Chat--Primitive Weapons  
June Stand Up Paddle Boarding

## JULY

9th - 11th Summer WILD Camp  
10th Kids: Artists by Nature  
11th Beginners Kayaking Class  
16th Tuesday at Ten Hike  
25th Nature Link Day Camp  
17th Play & Learn at Camp WaNoKi  
25th Fireside Chat -- Campfire Cooking  
31st Play & Learn at Kennedy  
July Stand Up Paddle Boarding

## AUGUST

TBD River Clean-up  
7th Play & Learn at Kennedy  
18th Kids: Artists by Nature  
10th Kids Trap Clinic  
14th Play & Learn at Camp WaNoKi  
20th Tuesday at Ten Hike  
22nd Fireside Chat -- Geocaching  
August Stand Up Paddle Boarding

## SEPTEMBER

17th Tuesday at Ten Hike  
26th Fireside Chat -- Flint Knapping  
TBD Call of the Wild Fundraiser

## OCTOBER

12th Trick or Treat Campgrounds  
15th Tuesday at Ten Hike  
19th Youth Pheasant Hunt  
24th Fireside Chat --Luminary Night Hike

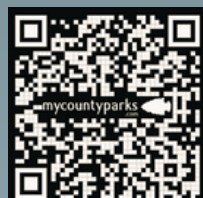
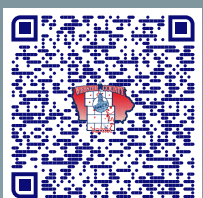
## NOVEMBER

7th Nature Craft at the Winery  
19th Tuesday at Ten Hike

## DECEMBER- FEBRUARY

- Pop-up programming
- Stay tuned for River's Edge Discovery Center Programming

Additional pop-up  
programming throughout  
the year...follow us on  
Facebook



**Making Webster  
County a great  
place to work, live,  
and play!**



The Friends of Webster County Conservation is a non-profit organization of people who are concerned with preserving our natural areas and providing opportunities for people to interact and learn about our natural environment.

**BECOME A FRIEND!**



Scan the code  
for our online  
membership  
form



## **Keepers of the Land Volunteer Opportunities:**

**Kennedy Park**

**Water Monitors**

**Center Hosts**

**Tree Care**

**Natural Resources**

**Trail Stewards**

**Parks**

**Goat Grazing**

**Special Event Helpers**

**Playground  
Spruce Up**

**Invasive Species  
Removal**

**Enviromantal Ed/  
Outdoor Recreation**

**Garbage  
Wranglers**

**Wildlife  
Managment Areas**

**River's Edge  
Discovery Center**

We are bolstering our Volunteer Program and hope to build a diverse base of individuals and groups to share their talents and time at your parks and facilities.

To volunteer scan the QR code.



# RIVER'S EDGE

DISCOVERY CENTER

*Opening  
July  
2024!*



*Stay Tuned for Grand Opening  
& Programming Details*



# RIVER'S EDGE DISCOVERY CENTER

## Pledge & Donation Form



Full Name / Company: \_\_\_\_\_

Spouse/Partner Full Name: \_\_\_\_\_

Address: \_\_\_\_\_ City, State, Zip: \_\_\_\_\_

Email Address: \_\_\_\_\_ Telephone #: \_\_\_\_\_

I/We would like to make an immediate donation of \$ \_\_\_\_\_ to this project.

I/We would like to make a pledge of \$ \_\_\_\_\_ over \_\_\_\_\_ years. (1, 2, or 3 yrs)

This gift is a corporate commitment from: \_\_\_\_\_

Name and title of corporate contact: \_\_\_\_\_

Please have this gift recognized in publications, Wall of Honor, (etc.) in the following way:

\_\_\_\_\_  
\* All donations/pledges over \$100 will be permanently recognized at the facility in order of giving levels. Your gift is tax deductible according to current tax law.



### MAIL PLEDGE & GIFT TO:

Friends of Webster County Conservation  
c/c River's Edge Discovery Center  
1415 Nelson Ave Fort Dodge IA 50501  
QUESTIONS? Call: 515-576-4258



Webster County Conservation  
1415 Nelson Avenue, Fort Dodge, Iowa  
www.mycountyparks.com  
conservation@webstercountyia.gov

# KENNEDY PARK & GYPSUM CITY OHV CAMPGROUNDS

## ONLINE RESERVATIONS

THIS SIGN IS POSTED AT  
RESERVABLE SITES



Reservable campsites are available online at

[www.mycountyparks.com](http://www.mycountyparks.com)

Reservations must be made 5 days prior to arrival,  
full payment required at time of reservation.



# FEE SCHEDULE



## CAMPING (APR 15TH - OCT 15TH)

### Kennedy Park

Full Hook-up \$25/per night  
 Full Hook-up (reservation) \$30/per night  
 \*must reserve 5 days ahead online

Electric Only \$20/per night  
 Primitive \$15/per night  
 Seasonal Sites \$2,500

\*Firewood \$5/bundle

\*Dump Station Fee \$3 (Non Campers Only)

### Gypsum City OHV

Full Hook Up \$30/per night  
 Electric & Water Only \$25/per night  
 Sites 1-8 are walk up ONLY

\*Must reserve 5 days ahead online

Friday/Saturday's booked together  
 3 night min on holiday weekends

## SHELTER RENTAL

### Bob Heun Shelter at Kennedy

Rent (Fri/Sat/Sun) \$300  
 (Mon -Thurs) \$150  
 Dec - Feb (Mon - Fri only) \$100

### Terry Moehnke Veteran's

### Memorial Park at Kennedy

Amphitheater/Shelter Rental \$100  
 Military FREE

\*must contact office for free reservation

### The Lodge at Camp WaNoKi

Rent (Fri/Sat/Sun) \$300  
 (Mon - Thurs) \$150

## YURTS & TINY HOMES (APR 15TH - OCT 15TH)

### Kennedy Park

Mulligan Yurt \$125/per night  
 Rod & Reel Yurt \$125/per night

\*must reserve 3 days ahead online  
 2 night min rental/3 night min on holiday weekends

### Gypsum City OHV

Mill House \$75/per night  
 Bunk House \$100/per night  
 Hunting Cabin \$100/per night

\*must reserve 3 days ahead online  
 Friday/Saturday's booked together  
 3 night min on holiday weekends

Reservations on-line by scanning the QR code  
[www.mycountyparks.com](http://www.mycountyparks.com) - \$4.00 processing fee per facility added



# RENTAL INFORMATION

You can check out equipment by filling out the appropriate rental form online at [www.webstercountyia.gov](http://www.webstercountyia.gov), once filled out and returned, staff from Webster County Conservation will contact you with rental details. Payment and a photo ID will be accepted at the River's Edge Discovery Center prior to your rental.

## Snowshoes & Cross Country Ski (skis/boots/poles) Rental:

- Rentals must be picked up Mon - Fri by scheduling a pickup time with staff between 9-4 pm and all rentals must be returned by 4 pm to the park office on date scheduled to return
- Kids 15 & under FREE with an adult rental
- Rentals may be extended for long holiday weekends, must be approved by the WCCB staff
- On clinic days equipment can be rented out after clinics, clinics will be posted to our Facebook page

Ski Set/Snowshoes:      \$10/day    \$20/wknd    \$30/wk

## Kayaks/Canoe Rental:

- Rentals must be picked up Mon - Fri by scheduling a pickup time with staff between 9-4 pm and all rentals must be returned by 4 pm to the park office on date scheduled to return
- 6 Kayaks and 2 canoes available
- 5 Stand Up Paddle Boards - 2 hour rental on Badger Lake only
- Must be at least 18 years old to rent
- What you need to bring ...

Cash or check—must be paid in full at time of rental

Photo ID and/or Current Driver's License

Proof of completion of safe paddling course for water vessel rental

## Stand-Up Paddle Board

\$15/2-hr (M-F)\*use at Badger Lake Only

## Kayak & Canoes

\$15/2-hr (M-F)    \$20/day    \$30/wknd    \$100/wk

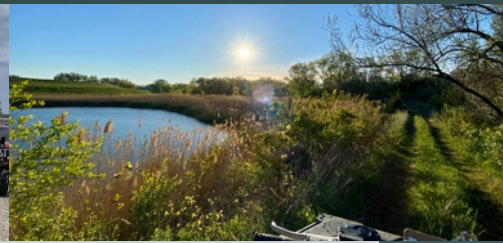
All equipment will be loaned out on a first-come, first-served basis however calling ahead for availability is encouraged. Before leaving Webster County Conservation, you are responsible for inspecting all equipment carefully and to bring any missing or damaged equipment to a staff member's attention. Make sure any discrepancies are noted on the rental agreement. Failure to note any discrepancies may result in a fee for damaged or missing equipment.

Don't have a paddle safety course?!

Don't Worry!! Visit [www.boaterexam.com/paddling/](http://www.boaterexam.com/paddling/) for a FREE online course!

**(Required prior to renting paddle craft)**





# GYPSUM CITY OHV PARK

Iowa's largest Off-Highway Vehicle Park, Gypsum City, offers 800 acres of land and 65 miles of trails through rolling hills and timber. Located southeast of Fort Dodge, the park serves as a destination for ATVs, dirt bikes, side-by-sides and snowmobiles. In addition to trails, the park includes a 1.5 mile motocross track, an amateur supercross track, skills developmental course, a youth track and a beginner/safety training area.

Trails are open sunrise to sunset. The park may close due to heavy rainfall or maintenance activities. Please check the Iowa DNR website for closures and a complete list of rules and regulations.

<https://www.iowadnr.gov/Things-to-Do/Off-Highway-Vehicles>

## **REQUIRED TO RIDE:**

**Current Iowa DNR registration**  
**Helmets for all riders**



For additional requirements, visit link above or scan the QR code.

The park also includes a 33-site campground with full hook-up and electric/water sites. Modern shower house, picnic tables and grills are available. Three tiny homes are also located within the campground. Sites and tiny homes are reservable at [www.mycountyparks.com](http://www.mycountyparks.com).



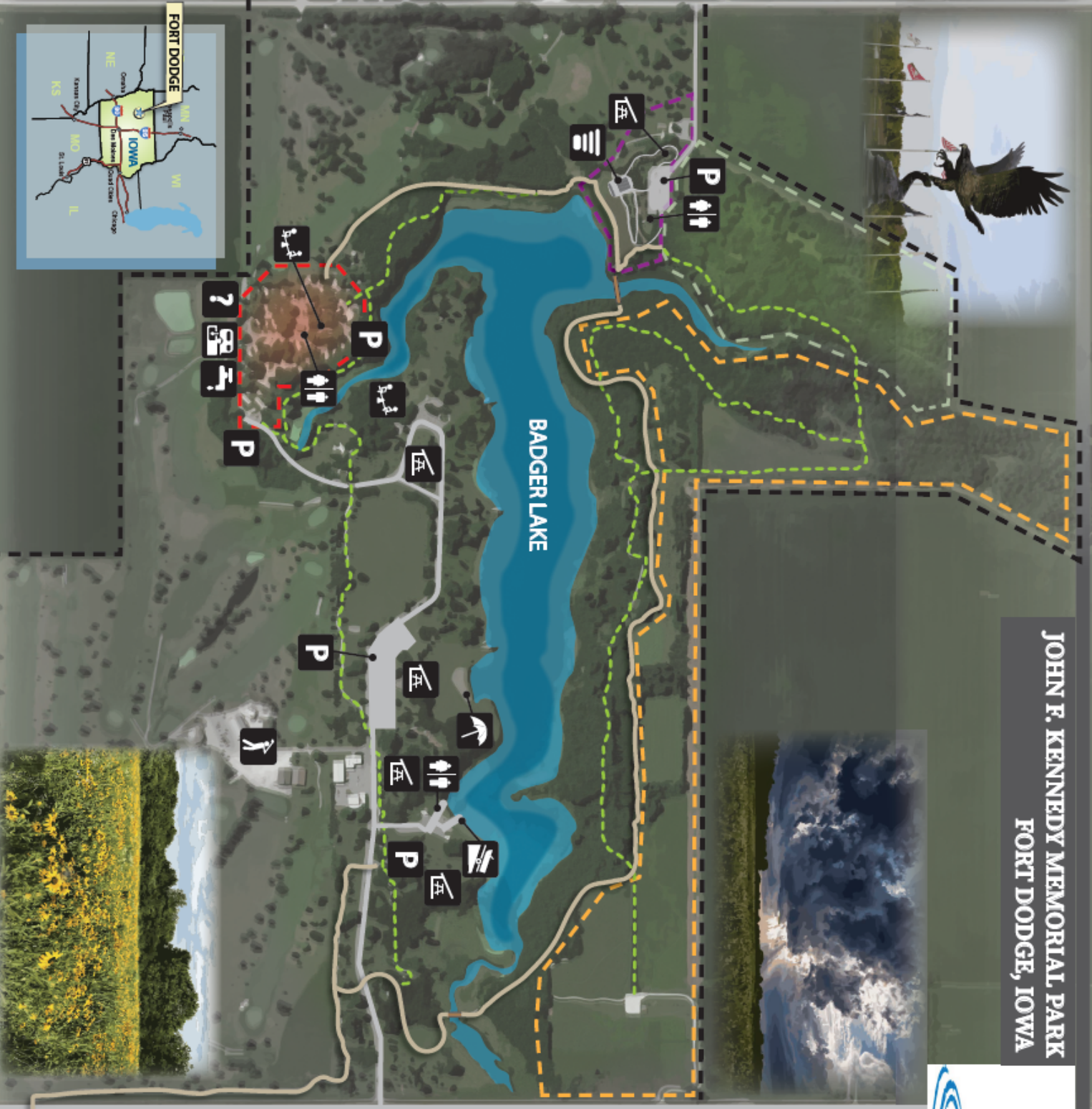


# FORT DODGE

Webster County, Iowa



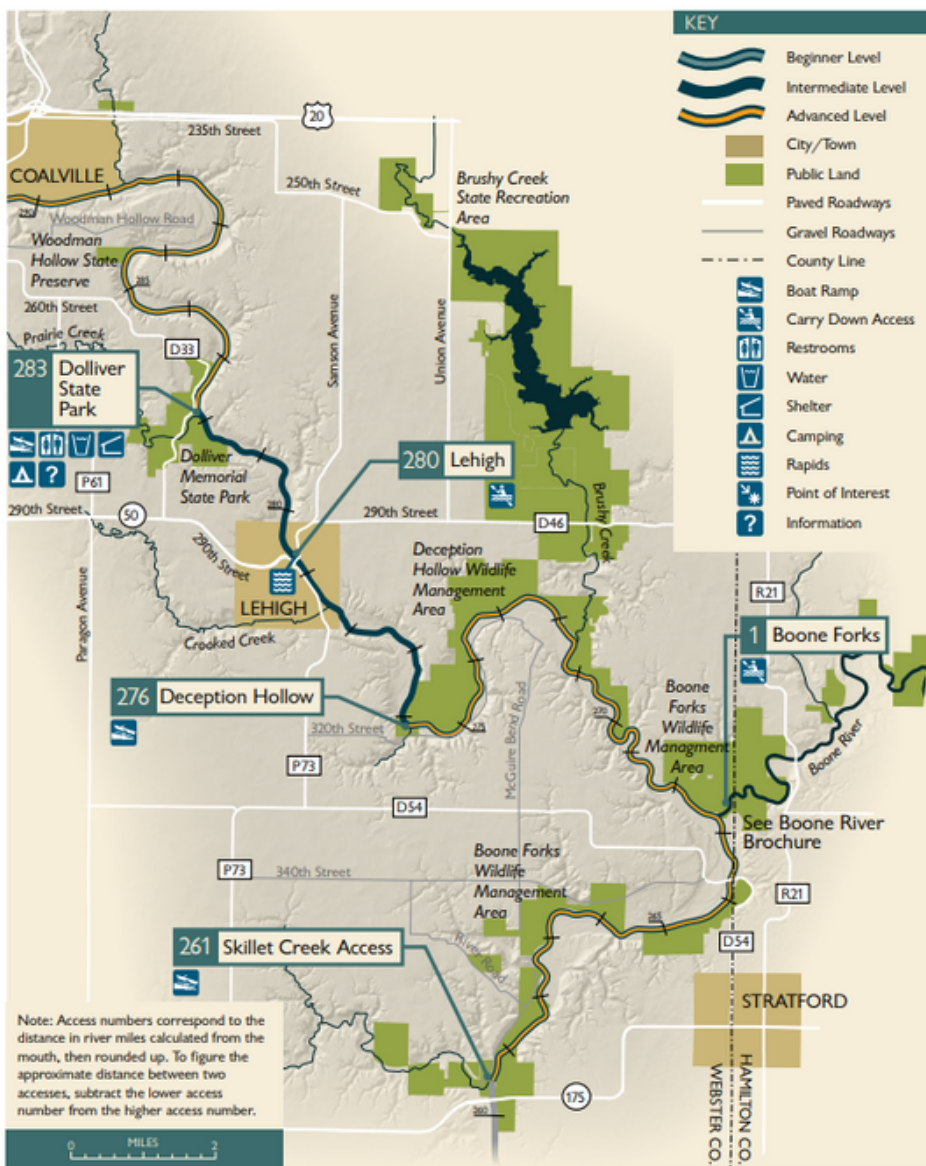

# JOHN F. KENNEDY MEMORIAL PARK FORT DODGE, IOWA



## LEGEND

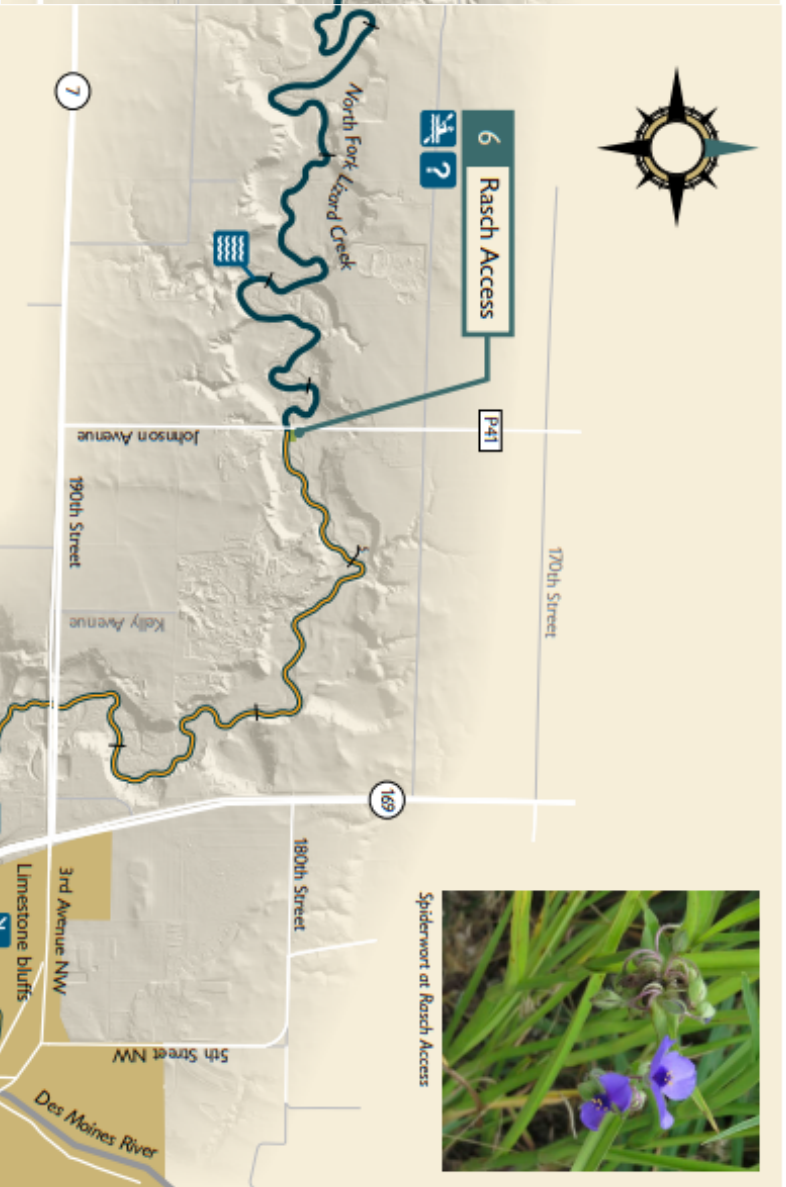
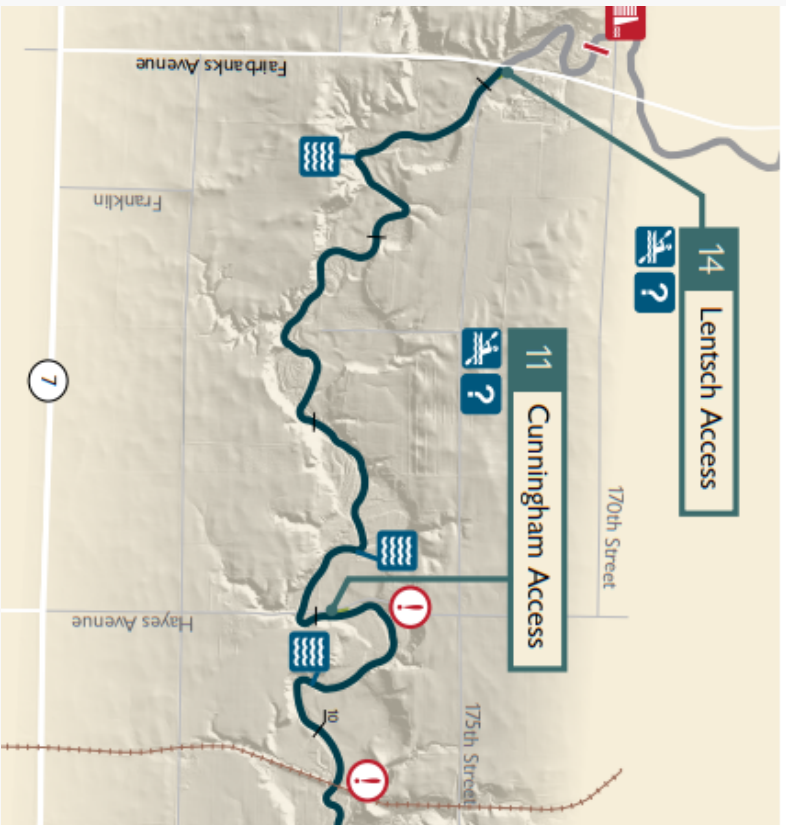
- PAVED TRAIL
- HIKING TRAIL
- PARK BOUNDARY
- VETERAN'S PARK
- DOG TRAINING AREA
- CAMPGROUND AREA
- CHILDREN'S FOREST AREA
- PARKING AREA
- REGISTRATION BOOTH
- PLAYGROUND
- RESTROOMS
- WATER SUPPLY
- RV DUMP SITE
- GOLF COURSE
- BOAT RAMP
- BEACH
- SHELTER
- AMPHITHEATER





Scan QR Code for DSM River Brochure





Scan QR Code  
for Lizard  
Creek  
Brochure

**KEY**

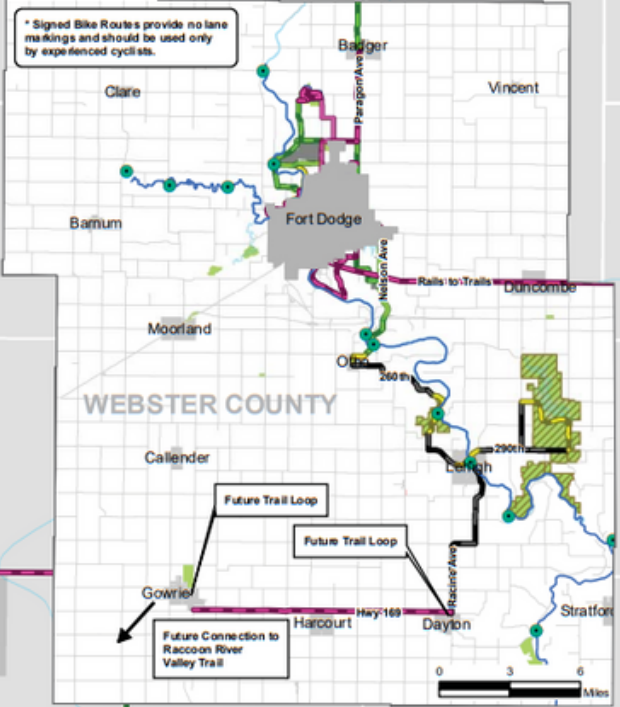
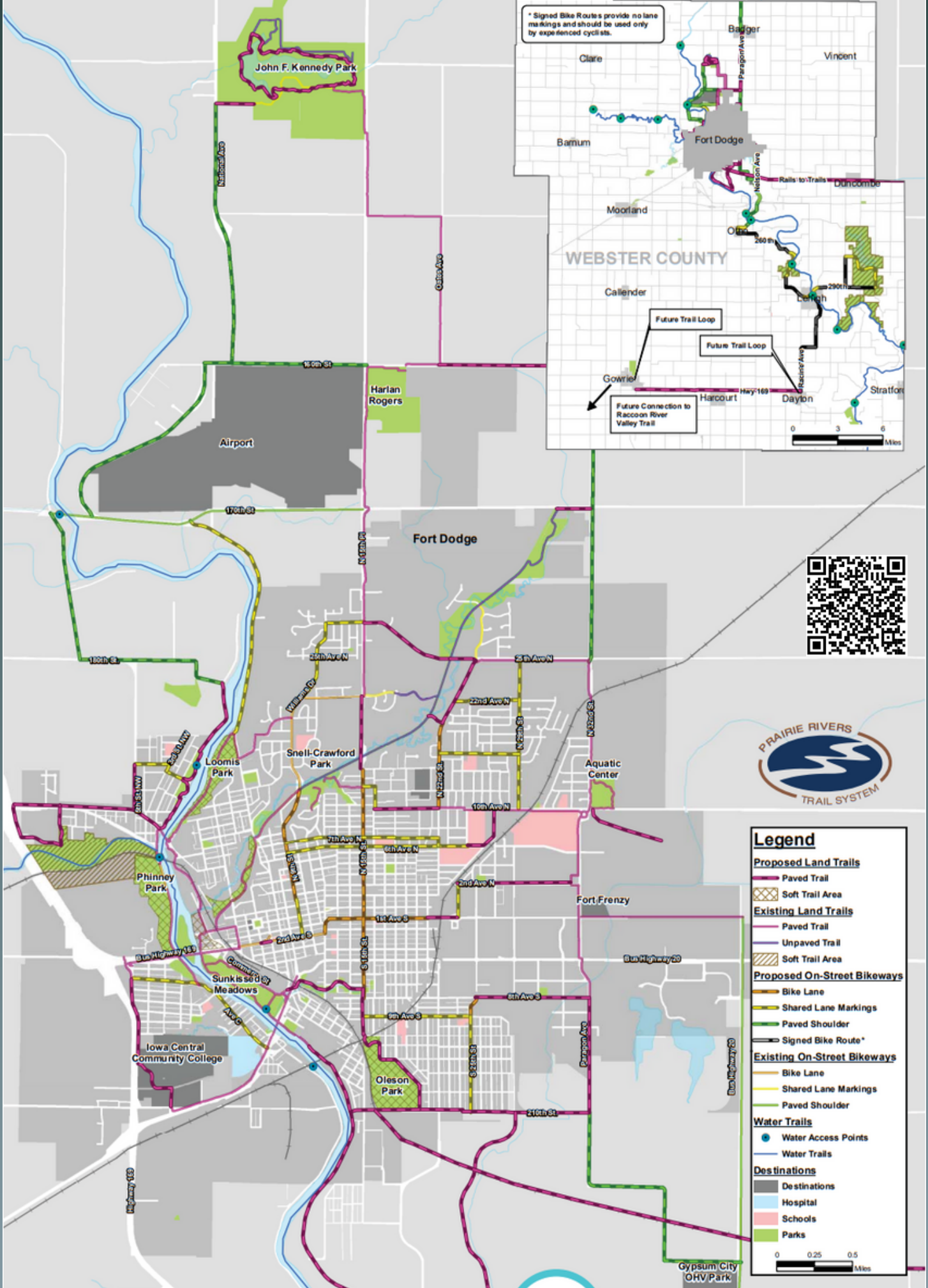
- Intermediate Level
- Advanced Level
- City/Town
- Public Land
- Paved Roadways
- Gravel Roadways
- Carry Down Access
- Shelter
- Dam
- Rapids
- Point of Interest
- Information
- Paddlers Be Aware:
  - electric fence over stream

**Note:** Access numbers correspond to the distance in river miles calculated from the mouth, then rounded up. To figure the approximate distance between two accesses, subtract the lower access number from the higher access number.

**MILES**

0 1

\* Signed Bike Routes provide no lane markings and should be used only by experienced cyclists.



**Legend**

**Proposed Land Trails**

- Paved Trail
- Soft Trail Area

**Existing Land Trails**

- Paved Trail
- Unpaved Trail
- Soft Trail Area

**Proposed On-Street Bikeways**

- Bike Lane
- Shared Lane Markings
- Paved Shoulder
- Signed Bike Route\*

**Existing On-Street Bikeways**

- Bike Lane
- Shared Lane Markings
- Paved Shoulder

**Water Trails**

- Water Access Points
- Water Trails

**Destinations**

- Destinations
- Hospital
- Schools
- Parks

0 0.25 0.5 Miles

# HIKE & BIKE

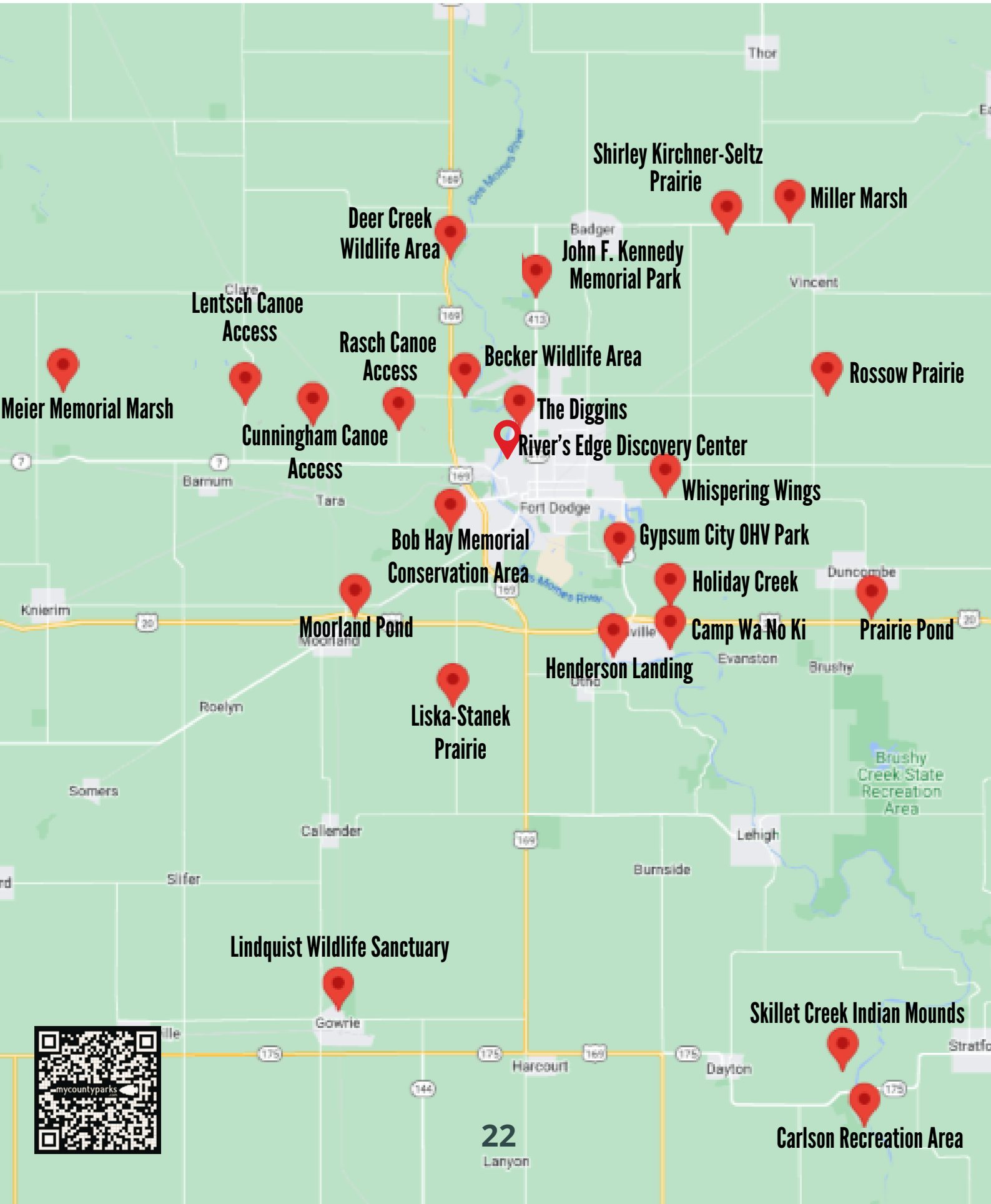
BICYCLE, PEDESTRIAN & TRAILS MASTER PLAN

WEBSTER COUNTY | FORT DODGE, IA



Fort Dodge & Webster County  
Network Maps  
Existing & Proposed Facilities

# WEBSTER COUNTY AREAS



# WEBSTER COUNTY AREA AMENITIES

## QUICK GLANCE AMENITY ICONS



AREA	ADDRESS	ACRES	AMENITIES
BECKER WILDLIFE AREA	1702 MADISON AVE, FD	10	Fishing, Boating, Non-motorized Boating
BOB HAY MEMORIAL CONSERVATION AREA	AVE O WEST, FD	225	Hunting, Wildlife Viewing, Fishing, Hiking
CAMP WA NO KI	2400 WA NO KI CAMP ROAD, FD	80	Wildlife Viewing, Fishing, Camping, Hiking, Facility Rentals
CARLSON RECREATION AREA	3838 RIVER RD, DAYTON	176	Hunting, Wildlife Viewing, Fishing, Hiking
CUNNINGHAM ACCESS	1780 HAYS AVE, FD	.28	Non-motorized Boating
DEER CREEK WILDLIFE AREA	HWY 169, FD	17	Hunting, Wildlife Viewing, Fishing, Non-motorized Boating
GYPSUM CITY OHV PARK	2390 MILL RD, FD	800	Fishing, Camping, RV Camping, ATV, Picnicing
HENDERSON RIVER ACCESS	NELSON AVE, KALO	2.73	Fishing, Boating, Non-motorized Boating
HOLIDAY CREEK WILDLIFE AREA	PETERSON DRIVE, FD	36	Hunting, Hiking
JOHN F. KENNEDY MEMORIAL PARK	1415 NELSON AVE, FD	400	Fishing, Boating, Non-motorized Boating, Camping, RV Camping, Picnicing, Facility Rentals
LENTSCH ACCESS	1500 175TH ST, CLARE	.28	Non-motorized Boating
LINDQUIST WILDLIFE SANCTUARY	PLEASANT ST, GOWRIE	7	Wildlife Viewing, Nature Study
LISKA-STANEK PRAIRIE	2601 JOHNSON AVE, FD	20	Hunting, Wildlife Viewing, Nature Study
MEIER MEMORIAL MARSH	170TH ST, MANSON	35	Hunting, Wildlife Viewing, Fishing, Hiking
MILLER MARSH	120TH ST, BADGER	185	Hunting, Wildlife Viewing, Nature Study
MOORLAND POND	1599 HWY 20, MOORLAND	23	Wildlife Viewing, Fishing, Hiking
PRAIRIE POND	VASSE AVE, DUNCOMBE	18	Fishing, Hiking
RASCH ACCESS	1794 JOHNSON AVE, FD	1.04	Non-motorized Boating
ROSSOW PRAIRE	70TH ST, VINCENT	40	Hunting, Wildlife Viewing, Nature Study
RIVER'S EDGE DISCOVERY CENTER	20 N 1ST ST, FD	5	Non-motorized Boating, Wildlife Viewing, Nature Study, Fishing, Hiking, Picnicing
SHIRLEY KIRCHNER-SELTZ YOUTH PRAIRIE	TAYLOR AVE, VINCENT	80	Hunting
SKILLET CREEK INDIAN MOUNDS	RIVER ROAD, DAYTON	19	Wildlife Viewing, Nature Study, Hiking
THE DIGGINS	25TH AVE N, FD	7	Wildlife Viewing, Nature Study, Hiking
WHISPERING WINGS	OLD HWY 20, FD	20	Hunting



# FAQ

## \* Can I reserve a campsite at Kennedy Park Campground?

Campsites 5 - 14 may be reserved online at [www.mycountyparks.com](http://www.mycountyparks.com). The remaining campsites at Kennedy Park Campground are available on a first come, first served basis. There are 7 seasonal campsites available that must be applied for by October of each year and are drawn lottery-style.

## \* Can I reserve a campsite at Gypsum City OHV Park Campground?

Yes, you can reserve most campsites at Gypsum City OHV Park Campground. Sites 1 - 8 are available on a first come, first served basis. The remaining sites may be reserved at [www.mycountyparks.com](http://www.mycountyparks.com).

## \* How do I go about reserving your other facilities?

All other rentable facilities are available to be reserved online at [www.mycountyparks.com](http://www.mycountyparks.com). That includes: Bob Heun Shelter House, Terry Moehnke Veteran's Memorial Park Amphitheater, Kennedy Park Yurts, The Lodge at Camp WaNoKi, and Tiny Homes at Gypsum City.

## \* Can I reserve the open shelters at Kennedy Park?

No, the open shelters at Kennedy Park are available on a first come, first served basis only. The Terry Moehnke Veteran's Memorial Park shelter does require a reservation.

## \* What if I need to cancel my reservation?

Please understand at the time of booking your reservation you immediately prohibit other people from reserving and utilizing that facility they, therefore, go elsewhere to locate a facility for that date. Should you choose to cancel your reservation you will forfeit 100% of all reservation fees paid or you have the opportunity to reschedule within 12 months. \*\*Gypsum City OHV Park Campground users have the option of utilizing a coupon code to reschedule at a later time if trails are closed.

## \* How do I know if the OHV Park is open?

To check the status of the OHV park, please visit [www.iowadnr.gov](http://www.iowadnr.gov) -> Things To Do -> Off-Highway Vehicles

## \* What do I need in order to ride at Gypsum City OHV Park?

To ride at Gypsum City, your machine must display a current registration and you MUST wear a helmet. For a complete listing of the park's rules and regulations, please visit: [www.iowadnr.gov](http://www.iowadnr.gov) -> Things To Do -> Off-Highway Vehicles

## \* Who do I call if I have questions regarding wildlife?

Please call State Conservation Officer, Bill Spece: 515-571-0127

## \* What if I have questions about a city park?

Please contact Fort Dodge Parks and Recreation Department: 515-576-7237

## \* How do I contact Lakeside Golf Course?

Please call 515-576-6741

## \* How do I contact our local state parks?

Brushy Creek State Recreation Area: 515-543-8298 / Dolliver State Park: 515-359-2539

