

bizhub PRESS C1100 and C1085

High performance and productivity
with true colour output, taking digital
print to the next level





Expand your business with Konica Minolta's fastest and most productive digital presses

Konica Minolta has designed the bizhub PRESS C1100 and C1085 to meet the very highest standards of productivity and quality. These presses achieve speeds up to 100 ipm – with outstanding colour reproduction and registration stability, combined with excellent overall print quality.

They can be configured for a wide range of print jobs, with one of the largest available ranges of modular in-line finishing options. The bizhub PRESS C1100 and C1085 have been engineered for round-the-clock operation, routinely delivering up to 1 million impressions per month.

These top-end digital presses are the natural choice for environments looking for high productivity, superb image quality and reliability. With their improved job-to-print times, and increased capabilities, the bizhub PRESS C1100 and C1085 will keep your jobs moving, and help your business lead the way in digital colour printing.

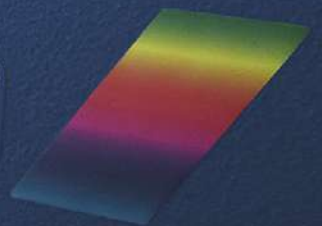


Stay ahead of trends toward on-demand printing and electronic publishing

Technologies such as on-demand printing and electronic publishing are steadily becoming a reality. As a result, there has been a rapidly increasing need for jobs requiring smaller quantities, or incorporating variable data – keeping pace with the rapid speed of electronic media.

Konica Minolta has been conscious of these trends from the very beginning, and that's why the bizhub PRESS C1100 and C1085 are virtually future-proof. With these high-end production presses, our engineers have incorporated new capabilities, and an almost limitless digital workflow capacity.

bizhub PRESS
C1100





Impressive productivity up to 100 ipm on the bizhub PRESS C1100

Uncompromising quality, speed and productivity

- High levels of productivity with up to 100 ipm per minute on the bizhub PRESS C1100, and up to 85 ipm on the bizhub PRESS C1085 (A4) on all media types
- Full rated output speeds on a wide range of paper types, and on media weights from as low as 55 gsm to a high 350 gsm
- Advanced precision print technology to deliver outstanding quality
- Enhanced media handling capability, thanks to the new fusing roller's expanded fusing belt contact area – resulting in extremely fast and consistent heat transfer
- More uptime and heightened productivity, with long-life consumables and Operator Replaceable User Maintenance capability
- Superb image quality with an expanded colour gamut
- Cutting-edge image processing technology, S.E.A.D. IV, which optimises engine characteristics. Expanded line-thinning capabilities reduce character thickness and enhance outline character background contours, so you can provide your customers with finely detailed reproduction quality – easily comparable to the best offset machines
- Impressive media flexibility, the bizhub PRESS C1100 and C1085 meet virtually any print job request, including SRA3 - A6 and custom sizes
- Duplex printing on paper stocks up to 350 gsm
- Advanced in-line finishing options to boost business opportunities. With an extensive range of finishing options including booklet trimming and perfect binding, the capabilities of the bizhub PRESS C1100 and C1085 are truly comprehensive
- User-friendly applications to streamline production

Helping you meet environmental commitments

With all-round capabilities, the bizhub PRESS C1100 and C1085 have a number of features that help reduce your impact on the environment. Equipped with HD^F toner, these digital presses are engineered to deliver strong environmental performance. A lower fusing temperature reduces damage to paper caused by heat for higher quality and reduced power consumption. Bioplastic materials are also used during manufacturing to further contribute to better eco performance.

Superb output quality with productivity you can count on, around the clock

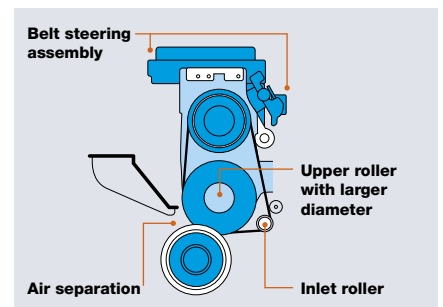


Impeccable accuracy, colour consistency and dependability will help you meet tight deadlines, and plan for long-term expansion of your business. Large quantities of widely varied stocks can be pre-loaded, enabling maximum flexibility and short lead times.



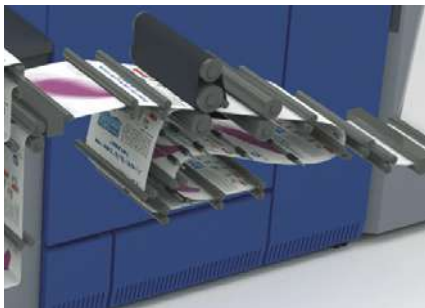
Industrial-scale paper capacity

The paper feeding system can be expanded to handle up to nine varieties of paper stocks, all in one system configuration. Jobs can be kept moving with a maximum input capacity up to 13,890 sheets, and a maximum output capacity of 10,000 sheets. Paper replenishment can be performed on the fly – enabling your operators to process high-volume jobs with ease.



Large diameter upper fusing system

The synergy between the newly designed large-diameter upper fusing system and HD^E toner enables high speeds up to 100 sheets per minute for paper weights of 55 to 350 gsm on the bizhub PRESS C1100 (85 sheets per minute for bizhub PRESS C1085).



High level of paper compatibility

Paper conveyance reliability has been enhanced with a new inlet roller and fusing belt steering mechanism and the inclusion of air blow fusing separation. This improves the handling of paper in a wide range of thicknesses and weights. These additions improve your print capability and make it much easier to meet the ongoing needs of printing on demand.



Ultra-precise image positioning

Impress your most demanding clients with impeccable front-to-back registration accuracy, guaranteed by a high-precision registration unit which combines the existing paper skew detection/auto-correction mechanism with an interim roller nip release, and a registration unit skew correction mechanism.



Maximising the print area to optimise use of paper

The bizhub PRESS C1100 and C1085 can accommodate most standard paper sizes, as well as custom sizes. This large sheet size, when used with an imposition software ensures you are getting the most out of each printed sheet, enabling you to offer your customers the flexibility they're looking for.

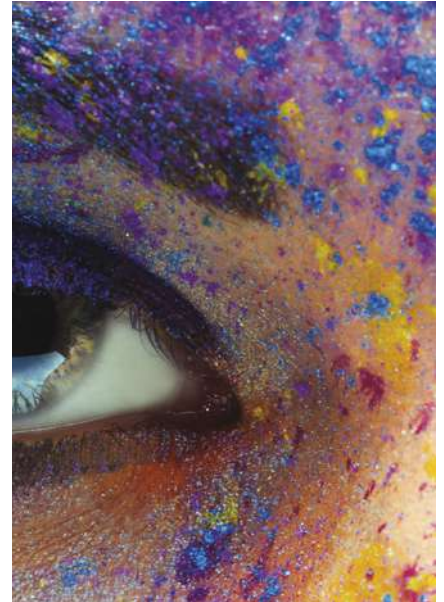


S.E.A.D IV cutting-edge image processing

You can easily reproduce the finest details, thanks to S.E.A.D IV. This system applies dot position control (DPC) to left, right and centre dotting points for each individual pixel. As a result, processing at 1,200 dpi produces resolution equivalent to 3,600 dpi – which helps minimise the fattening of lines or outline fonts. S.E.A.D IV technology and the use of screen processing enable these print systems to achieve smooth graduations that represent true life-like images.



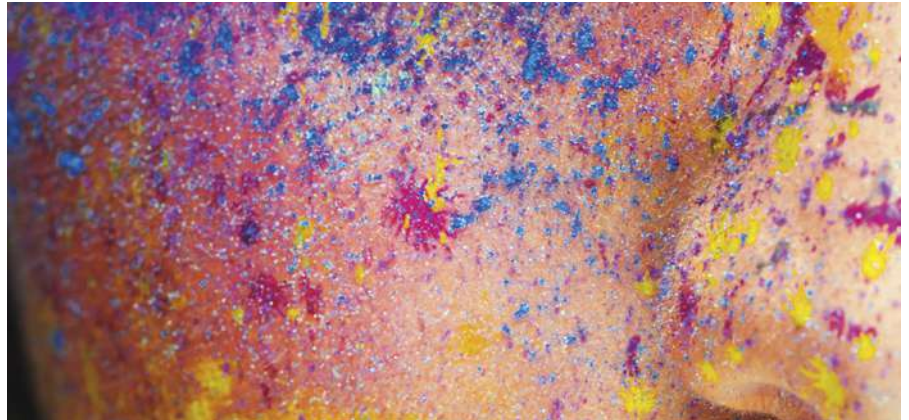
Dot 190 (Default)



FM1

Long-term image stability

A high-precision IDC sensor ensures consistent quality at high volumes, without loss of productivity. The sensor performs precise auto-calibration in real time, enabling control of image stability. To help overall stability, a cooling fan in the main part of the chassis maintains a constant temperature.





**Print controllers
that deliver fast
processing speed,
outstanding colour and
efficient workflow**

Easy job management and editing

The Konica Minolta internal print controller, IC-602C has been designed as a powerful print controller that integrates with the PRESS systems, offering leading functionality and control at system operator panel. This integration allows page integration, job combination and various changes to files without the need to re-print controller jobs saving time and effort.

We also offer a broad range of server based print controllers for the bizhub PRESS C1100 and C1085. These controllers are built on the latest system architecture with features and specific options that can grow your capabilities in digital colour.

EFI has two available server controllers that deliver on capabilities of fast processing speed, outstanding colour and efficient workflow automation to streamline processes and increase productivity. EFI Command workstation is a critical user interface that gives control functionality to all the EFI print controllers.

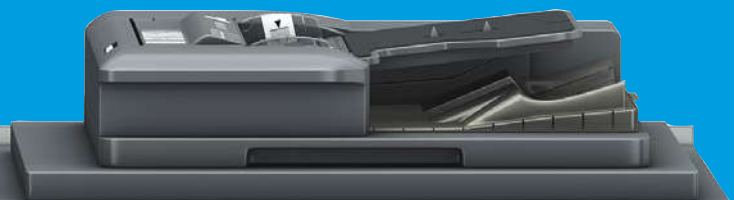
The IC-308 EFI Fiery server delivers on a standard offering that covers digital print requirements with EFI integration. Additional other advanced colour function software can be added as required.

With the EFI IC-310 server all the Fiery advanced digital colour tools are included, making this the most powerful and functional digital print controller available.

The unique Creo-Kodak digital workflow, the IC-312 should not be overlooked when seeking optimal processing power. This controller is ideally suited to multiply queue workflows and has the multi-print controller architecture to lead the way in variable data print capabilities.



bizhub PRESS
C1100



1

2

Comprehensive range of finishing options



With one of the widest available ranges of finishing options, you can tailor the bizhub PRESS C1100 and C1085 precisely to your business requirements. This flexibility will ensure you are equipped to meet your customers' needs today, and well into the future.

Saddle stitcher (SD-510)

Use for saddle stitching, multi-letter-fold and centre-fold.



Saddle stitching



Centre-fold



Letter-fold-in

Post Inserter (PI-502)

Add cover sheets and insertion sheets. Includes settings for two types of paper.



Sheet inserter



Cover sheet

Punch Kit (PK-522)

Two- to four-hole punching for paper up to 300 gsm.



Two-hole

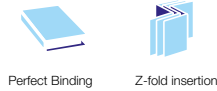


Four-hole



Perfect binding unit (PB-503)

This is the finisher for in-line production of all kinds of perfect-bound books. The functionality offers the insertion of Z-folds and the inclusion of pre-printed colour covers and sheets. Book binding is possible for books with a spine width of up to 30 mm and includes in-line cover trimming. Perfect bound books are output into a trolley stacker. The integrated cover tray has capacity for up to 1,000 sheets.

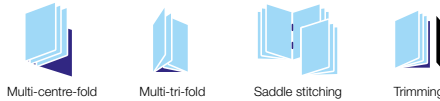


Perfect Binding Z-fold insertion



Booklet making unit (SD-506)

The booklet-maker provides added value as ideal finishing equipment for all kinds of saddle stitched and trimmed booklets. It speeds up the online production of leaflets, brochures, catalogues and other marketing, sales and training materials.



Multi-centre-fold Multi-tri-fold Saddle stitching Trimming



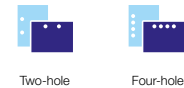
Advanced Booklet Finishing System (SD-513)

Booklet making for up to 50 sheets (200 pages) on low paper weight. 4 staples possible on the booklet bind. Multi-letter fold in (Up to 5 sheets). Multi half fold (Up to 5 sheets). Options for SD-513: FD-504: Spine Corner Forming Unit with 5 strength settings. TU-503: Top and Bottom trimming Unit. CR-101: Creasing for Booklet and flat sheet, up to four possible creases across the sheet.



Multi (GBC) punching unit (GP-501)

The multi punching unit offers high performance multi (GBC) punching of sheets at full system speed in preparation for offline spiral binding. Various available die sets correspond to the most popular punching schemes, such as metal-based coil (velo) and plastic (comb) binding.



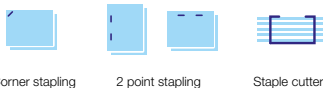
Two-hole Four-hole



All-in-one finisher (FS-532)

FS-532 stapling finisher with staple cutter provides stapling for up to 100 sheets* for beautiful finishes – regardless of the number of sheets – through enhanced paper output consistency and a refined paper path. A choice of three sub-options can also be fitted to expand the system when required.

* Stapling for up to 50 sheets for A3 paper.



Corner stapling 2 point stapling Staple cutter



Multi-folding unit (FD-503)

FD-503 provides a variety of folding functions, including centre-fold, letter-fold-in, letter-fold-out, double-parallel, Z-fold and gate-fold for creating materials such as direct mail, as well as two or three-hole punching. A paper inserter for setting two types of paper is also equipped.



Centre-fold Letter-fold-in Letter-fold-out Z-fold Gate-fold Double-parallel Two-hole Four-hole Sheet inserter

bizhub PRESS C1100 / C1085 Specifications

Technical specifications

| Printer specifications | C1100 | C1085 |
|-------------------------------------|---|--------------|
| Print speed A4 | Up to 100 ipm | Up to 85 ipm |
| Print Speed A3 | Up to 53 ipm | Up to 46 ipm |
| Print resolution | Max.: 1,200 x 1,200 dpi x 8-bit | |
| Gradations | 256 gradations | |
| System specifications | | |
| Paper weight | 55 to 350 gsm | |
| Duplex unit | Non-stack type, 55–350 gsm | |
| Paper sizes | A5–SRA3 (Custom Size 330 x 487 mm) | |
| Maximum image area | 321 x 480 mm | |
| Paper input capacity | Maximum: 13,890 sheets. PF-707: up to 4,630 sheets. PF-708: up to 4,630 sheets | |
| Paper output capacity | Maximum: 13,600 sheets. Stacking unit with trolley: 5,000 sheets. Large capacity tray: 3,000 sheets. Per sub tray: 200 sheets | |
| Main unit dimensions (W x D x H mm) | 900 x 950 x 1,319 (only main unit) | |
| Main unit weight | 430 kg (only main unit) | |

Controller specifications

IC-602C Enhanced Konica Minolta controller

| | |
|---------------------|--|
| CPU | Intel® Pentium i5 3.1 GHz |
| RAM | 4 GB + 12GB |
| HDD | 500 GB x 5 |
| Interface | Ethernet (10/100/1,000-Base-T) with IPv6 |
| File Formats | PDF, TIFF, JPEG, XPS |
| Client Environments | Windows® 7/2000/XP/NT 4.0/Server 2003. Macintosh OS 9.x and 10.x |

IC-308 external EFI Fiery controller

| | |
|---------------------|---|
| CPU | Intel® Core i5 2400 3.10 GHz |
| RAM | 4 GB high-speed memory |
| HDD | 1 TB Hard Drive |
| Interface | Ethernet (10/100/1000-Base-T) with IPv6, USB |
| File Formats | Adobe® PostScript controller® Level 1, 2, 3. Adobe® PDF 1.5 to 1.7. PDFX; EPS; TIFF; TIFF/IT; JPEG; PPML; Fiery® FreeForm™/Fiery® FreeForm™ 2.1 |
| Client Environments | Windows® 7/2000/XP/Vista™. Macintosh® OS X or higher |

IC-310 external EFI Fiery controller

| | |
|---------------------|--|
| CPU | 2 x Intel® Xeon E5 2643 3.3 GHz Quad Core |
| RAM | 8 GB high-speed memory |
| HDD | 2 x 1 TB DD SATA Drives |
| Interface | Ethernet (10/100/1000-Base-T) with IPv6, USB |
| File Formats | Adobe® PostScript controller® Level 1, 2, 3. Adobe® PDF 1.5 to 1.7. MS Document Formats. PDFX; EPS; TIFF; TIFF/IT; JPEG; PPML; Fiery® FreeForm™/Fiery® FreeForm™ 2.1 |
| Client Environments | Windows® 7/2000/XP/Vista™. Macintosh® OS X or higher |

IC-312 external Creo controller

| | |
|---------------------|---|
| CPU | Intel® Core i7-3770 3.4 GHz |
| RAM | 8 GB high-speed memory |
| HDD | 4 TB (2 X 2 TB) |
| Interface | Ethernet (10/100/1,000-Base-T), NetBios802.1x Authentication |
| File Formats | MS Doc formats Adobe PostScript controller 3; Adobe PDF 1.3-1.7; PDFX-1a, PDFX3-X4, EPS, TIFF 6.0; TIFF/IT; JPEG; PPML 2.2, Zipped PPML, PPML/VDX, VPS (AFP/IPDS – Trans Pack Required) |
| Client Environments | Windows® 7/2000/XP/NT 4.0/Server 2003 |

Scanner specifications*

| | |
|-----------------|---|
| Scan speed | Up to 42 opm |
| Scan resolution | 600 x 600 dpi |
| Scan modes | TWAIN scan; Scan-to-HDD; Scan-to-FTP; Scan-to-SMB; Scan-to-E-mail; Scan formats TIFF (single and multi-page), PDF |

Copier specifications*

| | C1100 | C1085 |
|-----------------|------------------------|----------------------|
| Copy speed A4 | Up to 100 ipm | Up to 85 ipm |
| Copy speed A3 | Up to 53 ipm | Up to 46 ipm |
| Gradations | 8-bit (256 gradations) | |
| FCOT | Less than 7.1 | 7.6 sec. (colour A4) |
| Magnification | 25–400% in 0.1% steps | |
| Multiple copies | 1–9,999 | |

Accessories

| | |
|------------------------------------|--|
| Paper feed unit PF-707 | 3 trays; Air suction feeding. Paper capacity: up to 4,630 sheets. Paper weight: 55–350gsm. Standard paper sizes: A5–SRA3. Min. paper size: 100 x 140 mm. Max. paper size: 330 x 487 mm |
| Paper feed unit PF-708 | Equipped with ADF and Scanner. 3 trays; Air suction feeding. Paper capacity: up to 4,630 sheets. Paper weight: 55–350gsm. Standard paper sizes: A5–SRA3. Min. paper size: 100 x 140 mm. Max. paper size: 330 x 487 mm |
| Relay Unit RU-511 | Enhanced Productivity Unit. Mechanical de-curler. Colour Density Sensor |
| Humidifier Unit HM-102 | Humidification de-curler unit for RU-511 |
| Finisher FS-532 | Stapling of up to 100 sheets, 2-point and corner stapling, Variable staple length. Output for up to 4,200 sheets. Sub tray for up to 200 sheets. Off-set shift sorting and grouping |
| Post Inserter PI-502 ** | Pre-printed sheet post inserter option. 200 sheet x 2 trays |
| Punch Kit FK-522 ** | Punching unit, 2 or 4 hole punching |
| Saddle Stitch Unit SD-506 | Booklet making of up to 50 sheets (200 images) Saddle stitching, For-edge trimming Output tray for up to 50 booklets Multi letter fold in/ Multi half fold (up to 5 sheets) |
| Saddle Stitch Unit SD-510** | Booklet making of up to 20 sheets (80 images). Output tray for up to 35 booklets. Centre staple, half-fold and tri-fold. Multi fold-in up to 3 sheets, Centre fold up to 5 sheets |
| Saddle Sticher Finisher SD-513 | Booklet making for up to 50 sheets (200 pages) on low paper weight. 4 staples possible on the booklet bind. Multi-letter fold in (Up to 5 sheets). Multi half fold (Up to 5 sheets). Options for SD-513: FD-504: Spine Corner Forming Unit with 5 strength settings TU-503: Top and Bottom trimming Unit. CR-101: Creasing for Booklet and flat sheet, up to four possible creases across the sheet. |
| Folding unit FD-503 | Pre-printed sheet inserting 2 x 500 sheets (PI); Punching (2/4 hole). Folding (half-fold, z-fold, gate-fold, letter fold in, letter fold out, double-parallel-fold). Sub tray for up to 200 sheets |
| Relay Unit RU-510 | Enhanced Productivity Unit. Sheet Turn Mechanism. Required in line with either GP-501/502 |
| Multi Punching Unit GP-501 | Multi punching of A4 sheets. User replaceable die sets for: velo bind, plastic comb, wire bind, colour coil, pro click. Paper weight: 75–216 gsm |
| Auto Binding Unit GP-502 | On-line Automatic binding system. One size colour Bind element-fits all. Saddle Sticher unit SD-506. Booklet making of up to 50 sheets (200 images). Saddle stitching, For-edge trimming. Output tray for up to 50 booklets. Multi letter fold in/ Multi half fold (up to 5 sheets) |
| High Capacity Stacking unit LS-506 | Up to 5,000 sheets stacking capacity. Two units can be installed in tandem. Up to 10,000 sheets stacking capacity. Trolley mounted stacker with Clamp mechanism. Off-set stacking. Sub tray for up to 200 sheets |
| Perfect binding unit PB-503 | Hot melt glue binding system. Integrated 1-side trimming of cover sheets. Books from A5 up to A4+ (307 x 221 mm). Books from 10 sheets up to 30 mm spine width. Cover paper tray for up to 1,000 sheets. Sub tray for up to 200 sheets. Book stacking capacity of up to 3,300 sheets |



Konica Minolta Business Solutions Australia Pty Ltd
Free call 1800 789 389 konicaminolta.com.au

Product appearance, configuration and/or specifications are subject to change without notice.
The Konica Minolta logo and the symbol mark, and "The essentials of imaging" are registered trademarks or trademarks of Konica Minolta Holdings, Inc. bizhub, PageScope, Simitri and the Emperon logo are registered trademarks or trademarks of KONICA MINOLTA BUSINESS TECHNOLOGIES, INC.
Windows is a registered trademark of Microsoft Corporation in the United States

and other countries. Adobe and PostScript are registered trademarks or trademarks of Adobe Systems Incorporated. All other brand and product names are registered trademarks or trademarks of their respective owners.

- Requirements for safe use
- Please read and follow the instruction manual to ensure safe operation.
- Only operate using appropriate power supply and voltage.

