

FEATURES AND SPECIFICATIONS

Features and Benefits

- Performance levels 1 and 2
- Flux proof option
- FMLB/LMFB pins (extended/recessed) available
- Board lock option
- Solder tails for 1.6mm (.062") PCBs (for 2.4mm (.094") PCBs on request)
- High temperature version on request

Electrical

Current: 1.5A

Physical

Housing: Glass-filled polyester, UL 94V-0

Contact: Brass

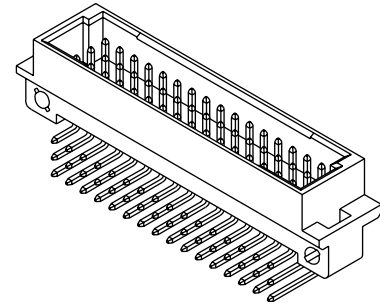
Operating Temperature: -55 to +125°C



**2.54mm (.100") Pitch
DIN 41612/IEC 603-2
Connector**

85003

**Male
Style C/2**



Reference Information

Product Specification: PS-85003-0001

Packaging: Tray

UL File No.: E29179

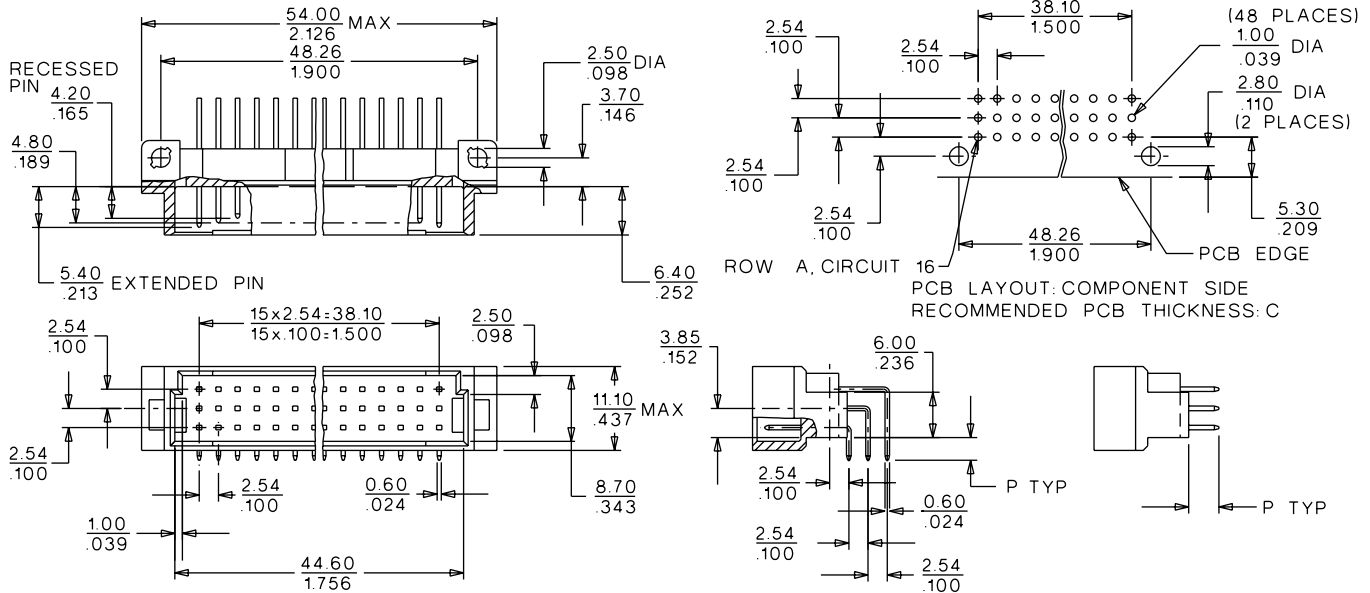
CSA File No.: LR19980-390

Mates With:

[85042](#)—Straight female style C/2

[85052](#)—Right angle female style R/2

CATALOG DRAWING (FOR REFERENCE ONLY)



ORDERING INFORMATION AND DIMENSIONS

Circuits	Order No.		Contact Loading	Rows	Solder Tail Dimension P	Option(s)
	Performance Level*					
	1	2				
16		85003-0531	Even only	a, c	3.0 (.118)	
32	85003-1653	85003-0048	Full	a, c	3.0 (.118)	FMLB-4 pins: 1, 16 a, c
		85003-0050				Board locks
48		85003-1782	Full	a, b, c	3.0 (.118)	FMLB-4 pins: 1, 16 a, c
	85003-0701	85003-0062				Board locks
	85003-3093	85003-0074				
	85003-1859	85003-1794				FMLB-6 pins: 1, 16 a, b, c
		85003-3067				

For other versions contact Molex

* Performance levels based on test conditions per DIN 41612, part 5:

1: >500 mating cycles. 10 day industrial environment (S02)

2: >400 mating cycles. 4 day industrial environment (S02)