

Section 1

The following information is provided for the purpose of the audit. It is the responsibility of the management to ensure that the information is true and correct. The auditor is not responsible for the accuracy of the information provided.

The following information is provided for the purpose of the audit. It is the responsibility of the management to ensure that the information is true and correct. The auditor is not responsible for the accuracy of the information provided.

The following information is provided for the purpose of the audit. It is the responsibility of the management to ensure that the information is true and correct. The auditor is not responsible for the accuracy of the information provided.

The following information is provided for the purpose of the audit. It is the responsibility of the management to ensure that the information is true and correct. The auditor is not responsible for the accuracy of the information provided.

The following information is provided for the purpose of the audit. It is the responsibility of the management to ensure that the information is true and correct. The auditor is not responsible for the accuracy of the information provided.

PLANCHE I

- 1-3. — *Parapanope euagora* De Man, matériel type femelle, mer de Java (d'après DE MAN, 1897, fig. 4, 4c, 4d) : 1-2, ♀ type la plus grande, 12 × 18,2 mm : 1, vue d'ensemble; 2, pince du grand chélipède. 3, ♀ type la plus petite, 10,5 × 16,2 mm, du même échantillon : pince du petit chélipède.
- 4-5. — *Parapanope euagora* De Man, ♀ 9,5 × 14,9 mm, Johore Strait, leg. H. W. KHOO (ZRC 1987.1) : 4, animal en entier; 5, pince du petit chélipède.
- 6-7. — *Parapanope euagora* De Man, ♀ ovigère 10,2 × 16 mm, BALSS det., near Singapore (MP-B11549) : 6, animal en entier; 7, chélipèdes.
- 8-9. — *Parapanope euagora* De Man, matériel préalablement déterminé *P. singaporensis* Ng et Guinot : mâle (8) et femelle (9), photographiés en couleur avant que le matériel femelle ne soit égaré. East Coast of Singapore, 15 m. (Photographies en couleur TAN WEE HIN; tirages papier noir et blanc J. REBIÈRE.)

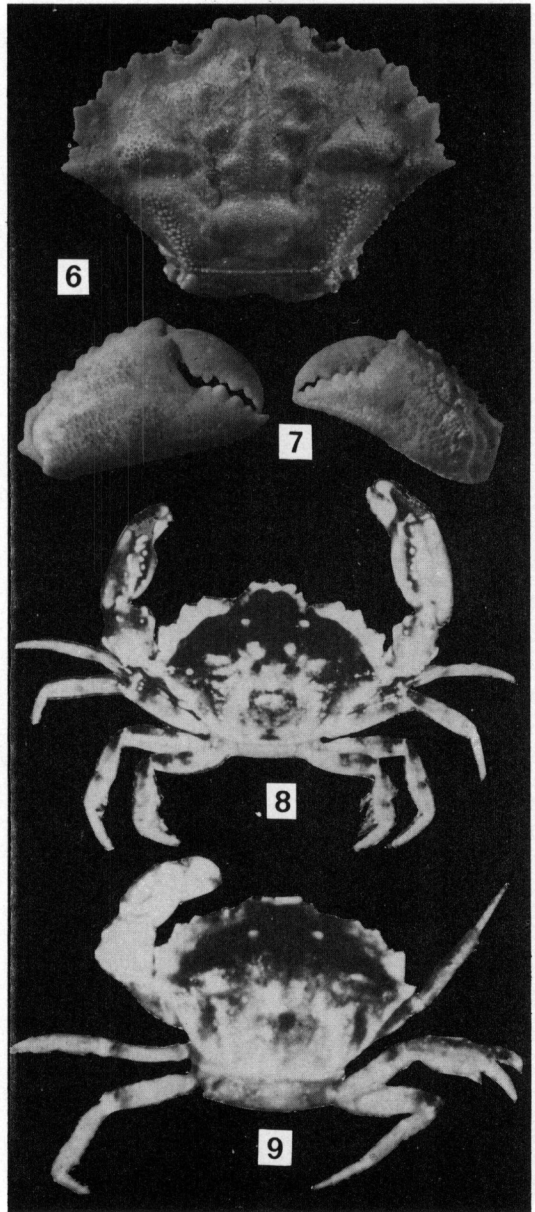
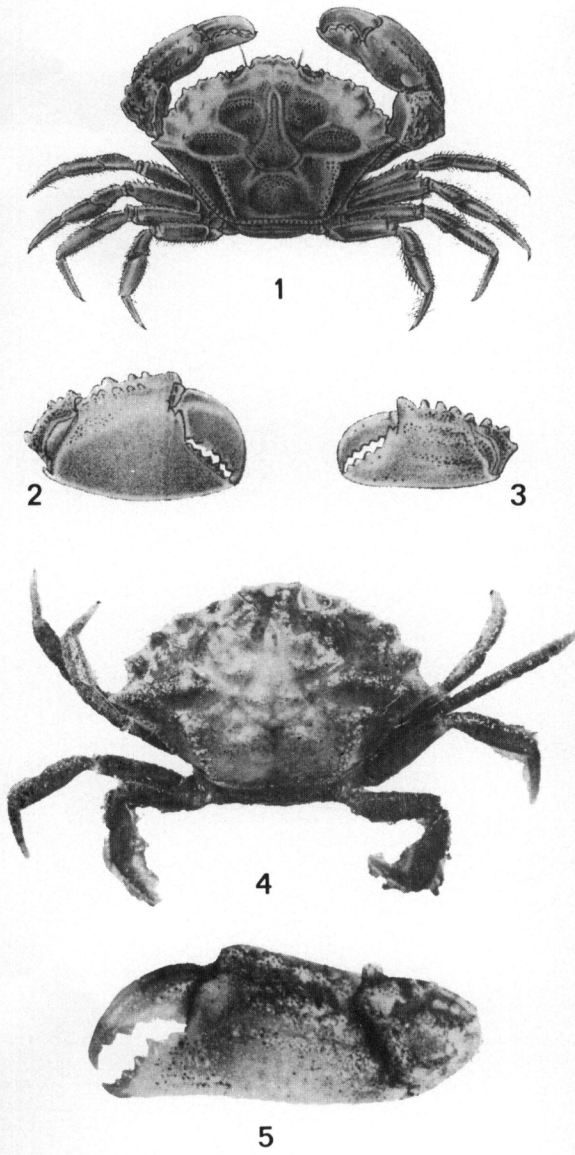


PLANCHE I

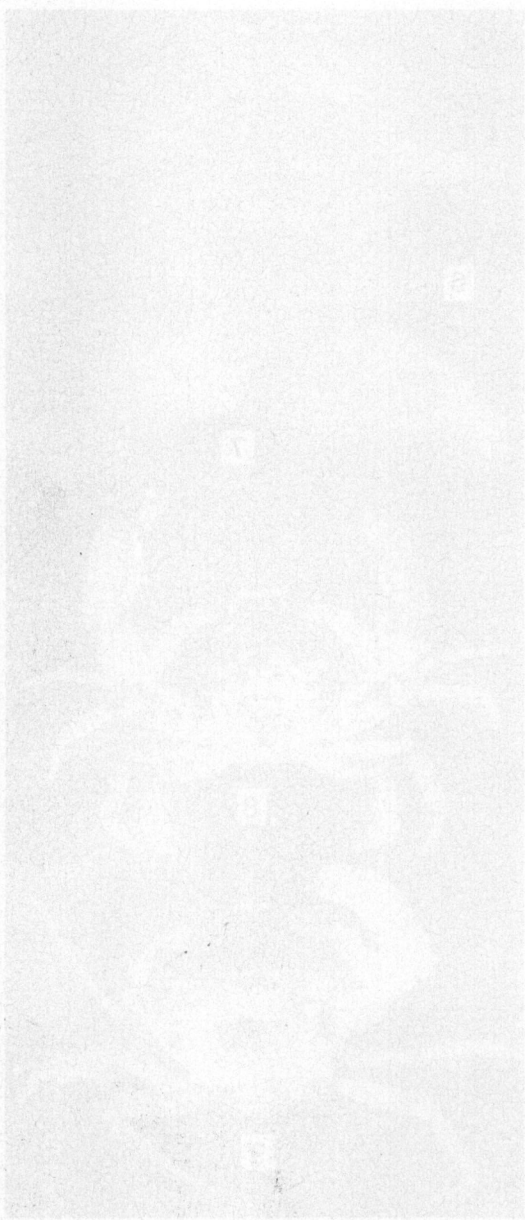


PLATE I