

EPSON®

QUICK REFERENCE GUIDE

MM PROJECTOR
ULTI EDIA

EMP-810/800



Be sure to read the User's Guide thoroughly before using this projector.

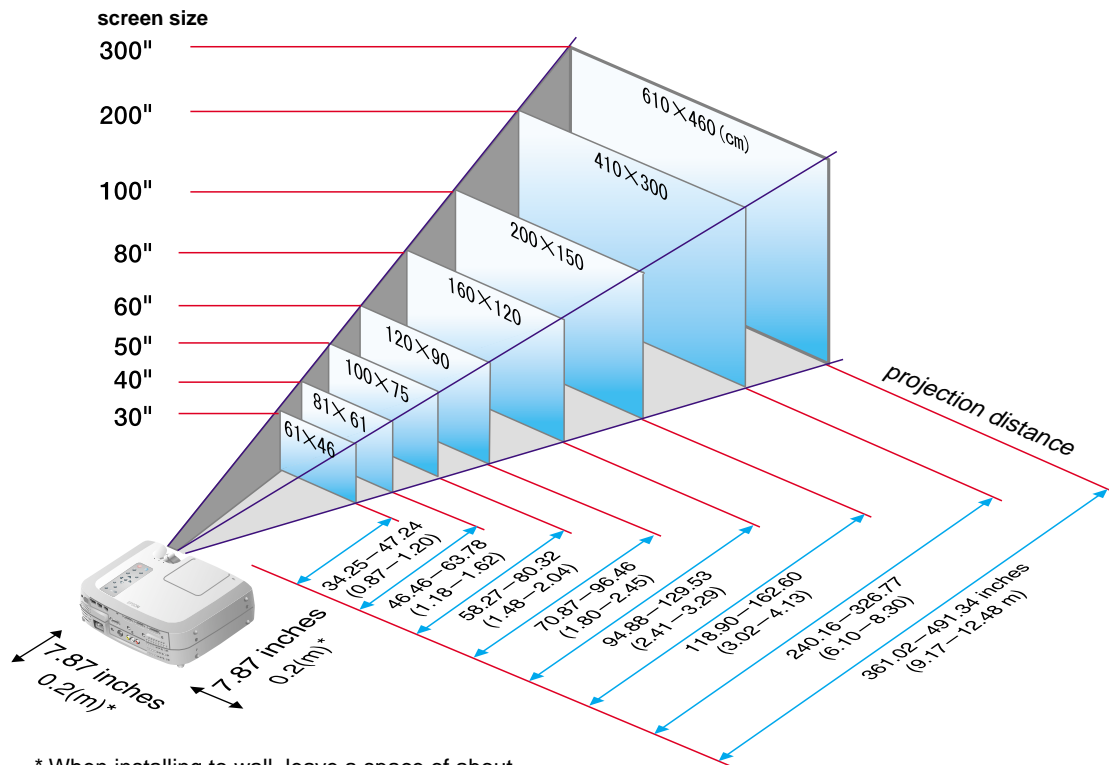
WARNING

Never look into the lens while the projector's power is turned on.

INDEX ►

Setting Up

- Adjust the distance between the projector and the screen until the desired image size is obtained.



Connections

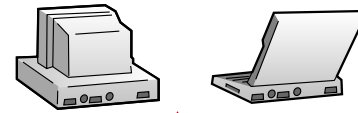
Pages 19–34 of User's Guide



- Tip**
- You may need to use an optional adapter or purchase a separate adapter to connect the computer to the projector, depending on the shape of the computer's monitor port.
 - If connecting component video source (such as a DVD player), you can use the optional component video cable to connect the source to the Computer 2/Component Video connector at the rear of the projector.

* Turn off the power for both the projector and the other equipment before connecting them.

● Connecting to a Computer

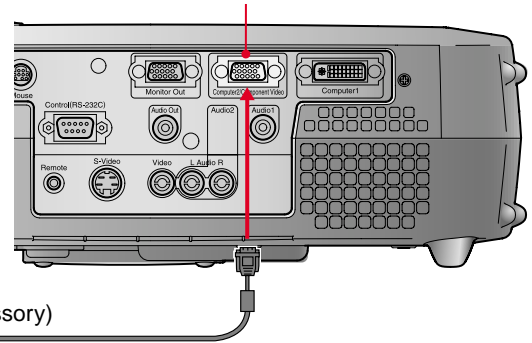


To computer's monitor port (video port)

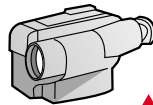


Computer cable (accessory)

Computer 2/Component Video connector



● Connecting to a Video Source

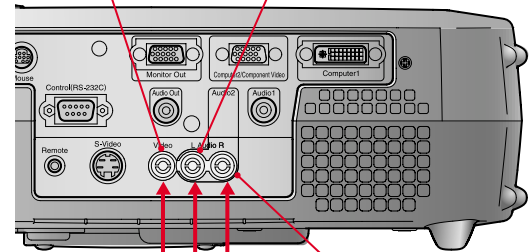


To video output connector (yellow)
To audio output L connector (white)
To audio output R connector (red)

A/V cable (accessory)

Video connector (yellow)

Audio L connector (white)



Audio R connector (red)

Projecting

Pages 36–38 of User's Guide


- 1 Remove the lens cover.
- 2 Connect the power cord to the projector.
- 3 Connect the power cord to an electrical outlet.
The indicator (A) will light orange.

- 4 Turn on the power for the input source.
In the case of a VCR, press the PLAY button.



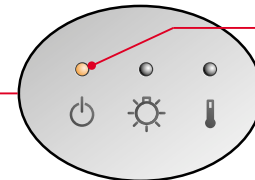
- 5 Press the  button to turn on the projector's power.



If using the remote control, set the R/C switch to the ON position and then press the  button.

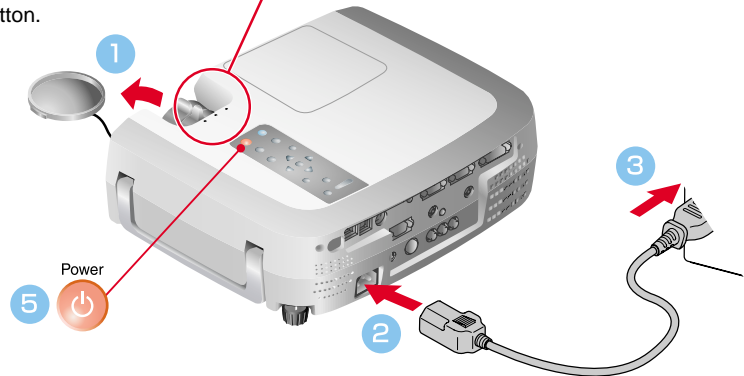
(A) will start flashing green and projection will start.
(Warm-up in progress)

Power





(A)

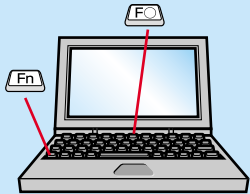
Operation indicator



Tip

If a laptop computer or a computer with a LCD screen has been connected to the projector, you may need to change the output destination for video signals depending on the computer keys ( or ) or the computer's settings. The output destination can normally be changed by holding down the computer's **Fn** key and pressing one of the Function keys.

Once the source has been changed, after a short wait the projector will start projecting. If the output has been changed to external output, only the external output should be used. For details, refer to the documentation provided with your computer.

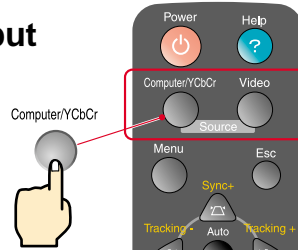


Examples of changing output

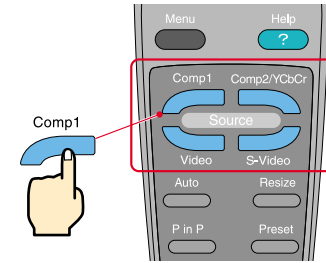
NEC	Fn + F3
Panasonic	Fn + F5
TOSHIBA	Fn + F5
IBM	Fn + F7
SONY	Fn + F7
FUJITSU	Fn + F10
Macintosh	After restarting the computer, change the Control Panel monitor and sound settings so that Mirroring is active.

If images do not appear ...

Change the input signal.




Projector

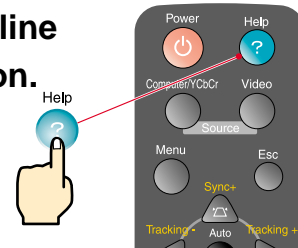


Remote Control

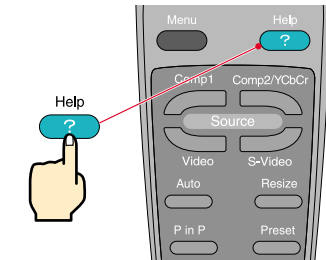
If you have other problems ...

Refer to the online Help information.

Press , and then follow the instructions.



Projector







Remote Control


* Refer to Troubleshooting.

Adjustment

Pages 41, 42, 43 and 46 of User's Guide

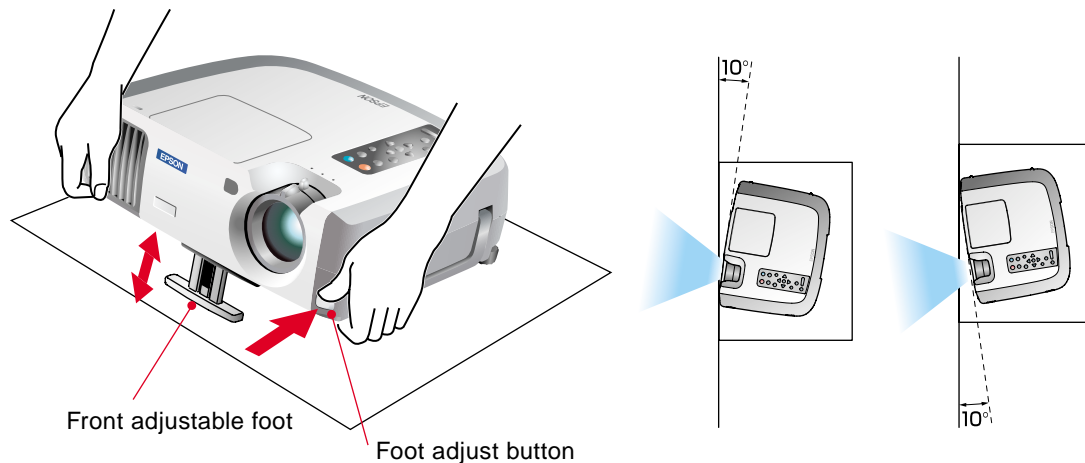
Tip

If you change the projection angle, you may get keystone distortion in the images. You can use the , ,  and  buttons on the projector's control panel to correct keystone distortion.

 See page 7.

Adjusting the projection angle

You can adjust the amount of extension for the front adjustable foot to adjust the projection angle. The angle can be adjusted horizontally within a range of approximately 10°.

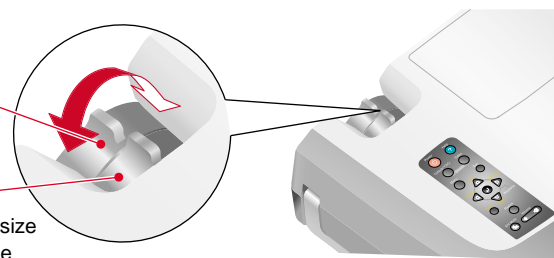


Adjusting the image size and focus



Focus adjustment

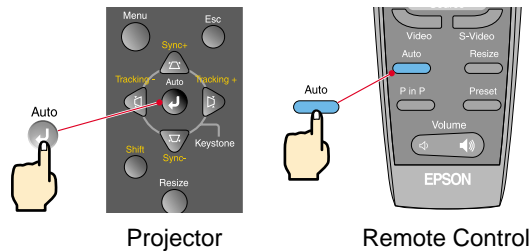
Image size adjustment

Turn to Wide to increase the size
Turn to Tele to reduce the size





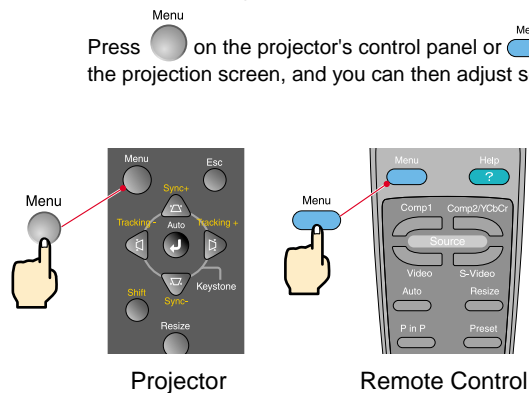
Automatically adjusting computer images to the optimum settings

Press  on the projector's control panel or  on the remote control. The tracking, display position and synchronization will be automatically adjusted.



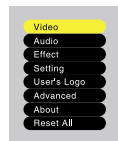
Other adjustments

Press  on the projector's control panel or  on the remote control. The setting menu will be displayed on the projection screen, and you can then adjust settings such as brightness, contrast and sharpness.

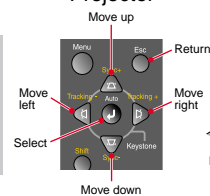


Using the on-screen menus

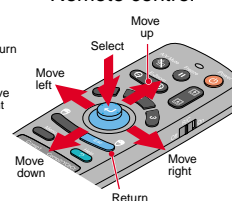
Main menu




Projector





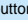

Remote control




Adjustment

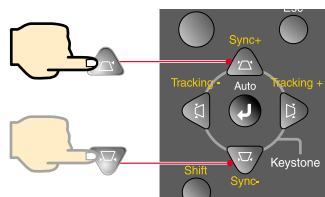
 Correcting keystone distortion
Pages 44 and 45 of User's Guide

Tip

- When keystone correction is carried out, the projected image will become smaller.
 - The keystone correction settings are memorized, so that if you change the position or angle of the projector, you may need to readjust the keystone correction settings.
- To return an altered keystone correction setting to the factory default setting, do the following.
- To restore the vertical keystone correction to the default setting: While holding down the  button, press the  button for 1 second or more.
- To restore the horizontal keystone correction to the default setting: While holding down the  button, press the  button for 1 second or more.
- If the images become uneven in appearance after keystone correction is carried out, decrease the Sharpness setting.

● If the images have keystone distortion ...

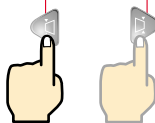
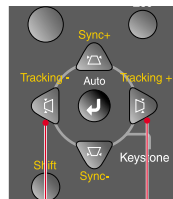
Press  on the projector's control panel to correct the keystone distortion.



Correction in vertical direction



Correction in horizontal direction



● If using both horizontal and vertical keystone correction, carry out in the following order.


- 1 . With the front adjustable foot retracted, set the projector so that it is fully horizontal.
- 2 . Extend the front adjustable foot to adjust the angle as necessary.
- 3 . Adjust the vertical keystone distortion until both sides of the picture are vertical.
- 4 . Adjust the horizontal keystone distortion until the top and bottom edges of the picture are both horizontal.

Turning Off the Projector


Pages 39 and 40 of User's Guide

1 Turn off the power for the equipment connected to the projector.

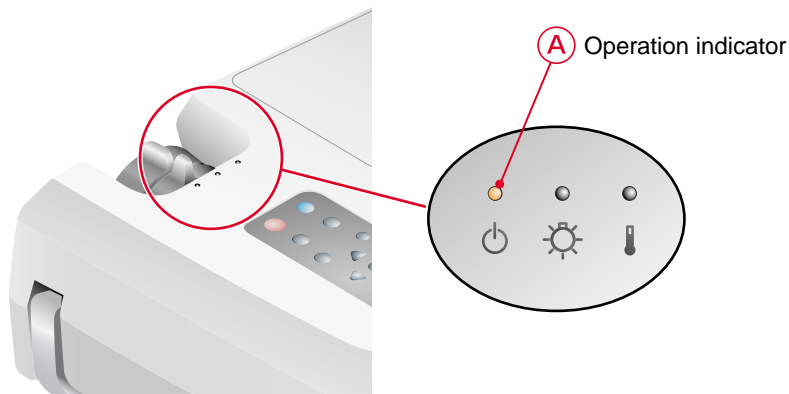
2 Press the  button twice to turn off the projector's power.

 will start flashing orange. (Cool-down in progress/approx. 2 minutes)

3 Check that  is lit steadily with an orange color, and then disconnect the power cord.

If the power cord is disconnected while  is still flashing orange, it may cause problems with projector operation.

* Set the R/C switch on the remote control to the OFF position.



Functions for Enhancing Projection

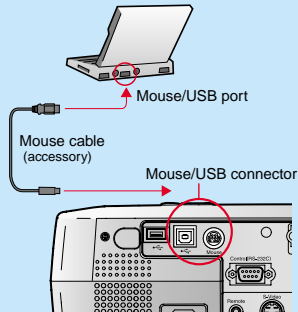


Wireless mouse function
Page 25 of User's Guide



Tip

●When using the remote control as a wireless mouse, you need to connect the projector as follows.



●Use a USB cable to connect the projector to the USB port of a computer.

●If the mouse function does not work after connecting a PS/2 mouse, you will need to restart the computer.

●Use only the accessory mouse cable provided, otherwise the wireless mouse function may not operate correctly.

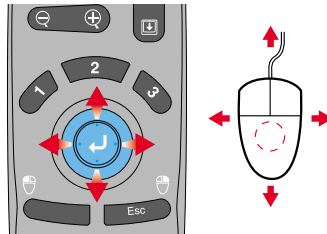
This projector is equipped with a variety of useful functions for enhancing projection.


Refer to the corresponding pages of the User's Guide for details on each function.

Using the remote control for one-person presentations

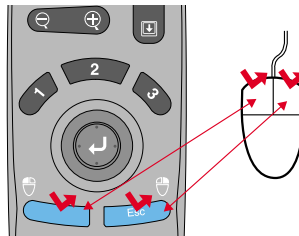
The remote control can be used to carry out the same functions as left-clicking and right-clicking mouse buttons on a computer. You can use the remote control to control the computer's mouse pointer from a distance.

Mouse pointer movement



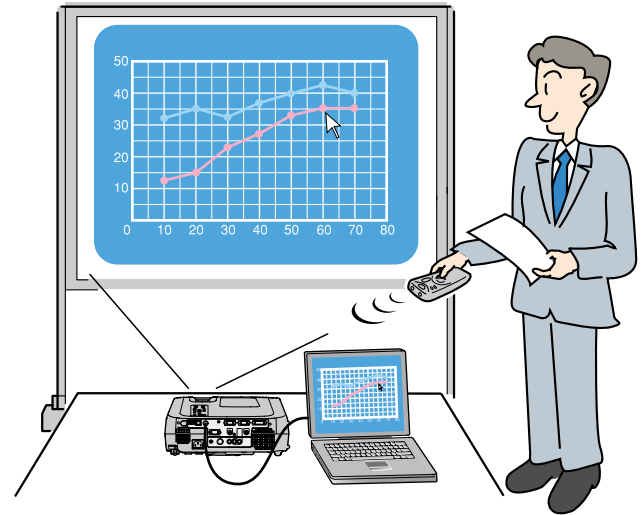
Tilt the  button in the direction you want the mouse pointer to go.

Mouse clicks



For left clicks: Press [Left]

For right clicks: Press [Right/Esc]



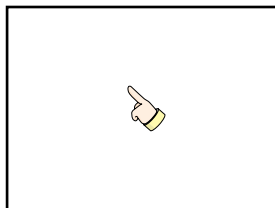
Tip



By pressing any button other than the above, the stamps, spotlights and bars used for decoration disappear.

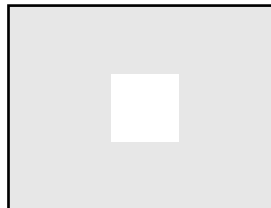
● Enhancing presentation materials

Press **1** .



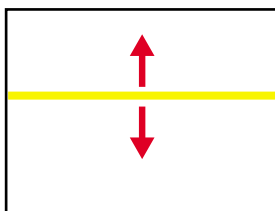
A pointer icon appears on the screen. The type of icon changes to one of three icons each time the **1** button is pressed. Tilt the **4** button to move the pointer icon. Press the **4** button to stamp the pointer icon on the screen.

Press **2** .



A spotlight appears on the screen. The size of the spotlight changes to one of three sizes each time the **2** button is pressed. Tilt the **4** button to move the spotlight.


Press **3** .





A bar (straight line) appears on the screen. The type of bar changes each time the **3** button is pressed. Tilt the **4** button to move the bar.




Functions for Enhancing Projection

 E-Zoom function
Page 56 of User's Guide


Tip

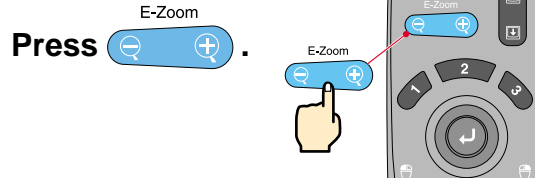
- After enlarging part of the image, you can tilt the  button to scroll around the image.
- To cancel the enlargement effect, press the  button.


● Enlarging part of projected images

Press the  button on the remote control.

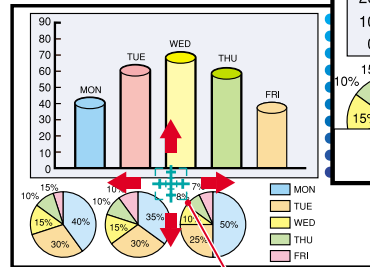
A cross will appear in the center of the image being projected.

Tilt the  button on the remote control to move the cross to the area of the image to be enlarged.

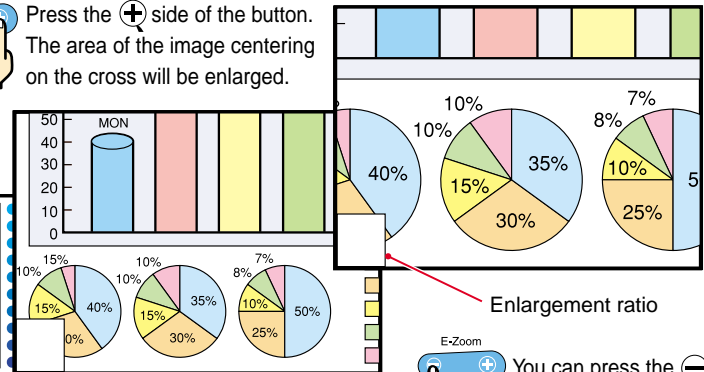




Press the  side of the button.

The area of the image centering on the cross will be enlarged.



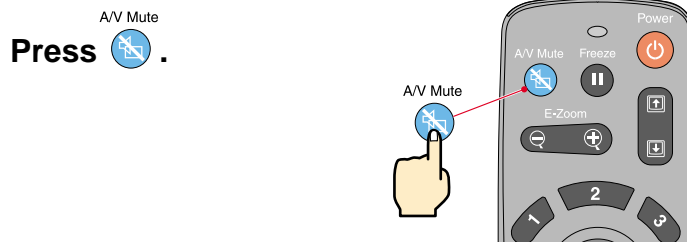
Cross




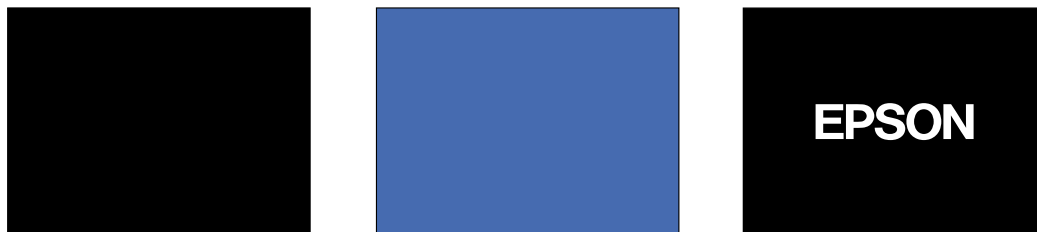
 You can press the  side of the button to reduce the size of the enlarged area.

● Momentarily turning off images and sound

The A/V Mute function momentarily pauses the image and sound, and displays either a blank blue or black screen or the user's logo screen. It can be used when you do not want to show viewers details of operations such as selecting different files when computer images are being projected.



First press the  button, select "Settings" and then "A/V Mute". Then select the type of screen to be displayed when projection is being stopped. The following choices are available. The default setting is the black screen.



 **Press**  **once more.**

Projection of the images and sound will be restarted.

If you use this function while projecting moving images, the images and sound will still continue to be played back, and you cannot return to the point where the A/V Mute function was activated.

Viewing the Online Help



This projector is provided with an online help function which can be used when you have a problem using the projector.

1 Press .

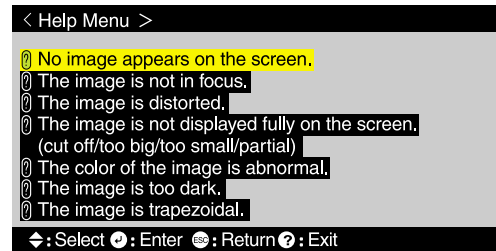
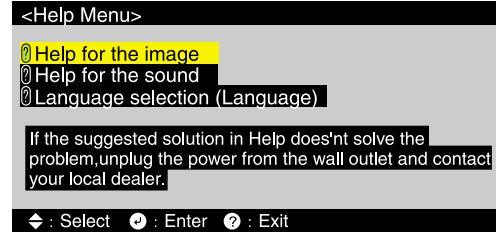
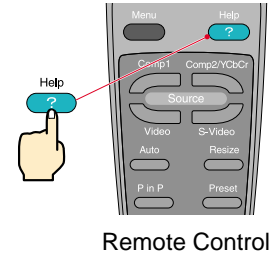
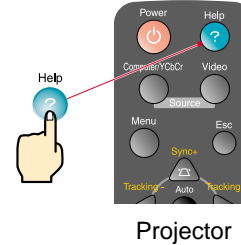
2 Select the item to view.

Press the  buttons on the projector's control panel.
Or tilt the  button on the remote control.

3 Accept the selected item.

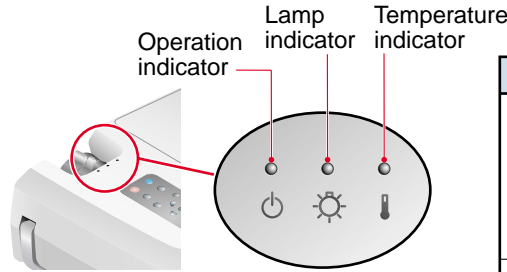
Press the  buttons on the projector's control panel.
Or press the  button on the remote control.


4 The selected item will appear on the screen.


















Checking the Indicators

The projector is equipped with indicators that alert you to problems with projector operation. The following tables show what the indicators mean and how to remedy problems that they indicate.



Indicator status	Problem and remedy
Standby condition Projection starts when the  button is pressed.	
Cool-down in progress After approximately 2 minutes, the projector switches to the standby condition (the indicator lights orange).	
Projecting in progress	
Warm-up in progress After warm-up is complete, projection will start when a video signal is input.	
Internal problem Stop using the projector and ask for projector to be repaired. *1	

Indicator status	Problem and remedy
Red Red   	This can happen when the power cord was disconnected from the electrical outlet before the cool-down period had finished the last time the projector was turned off. Wait about 2 minutes. After about 2 minutes, disconnect the power plug and then re-insert it.
Red Red   	Check that the lamp is properly installed and the lamp cover is closed. Or, replace the lamp with a new one. *2
Orange   	Lamp will soon need to be replaced. Replace the lamp as soon as possible. *2 The appearance of the operation indicator at this time will vary depending on the status of the projector.
Red   	High temperature inside projector (overheating). The lamp will turn off automatically and projection will stop. Wait for about 5 minutes without operating the projector. After 5 minutes have elapsed, disconnect the power plug and then re-insert it.
Red   	High-speed cooling in progress. If the internal temperature rises any higher, projection will stop. Check that the air inlet and exhaust vents are clear and that the indoor temperature is not too high.

*1 If an indicator is showing a status which does not appear in the previous tables, contact your dealer or the nearest address provided on page 11 of the Safety Instructions/World-Wide Warranty Terms.

*2 Contact your dealer for a spare lamp.

EPSON®