



Title	A new ghost flathead (Scorpaeniformes: Hoplichthyidae) from southwestern Australia
Author(s)	Nagano, Yuki; Imamura, Hisashi; Yabe, Mamoru
Citation	Ichthyological research, 62(3), 245-252 <a href="https://doi.org/10.1007/s10228-014-0432-9">https://doi.org/10.1007/s10228-014-0432-9</a>
Issue Date	2015-04
Doc URL	<a href="http://hdl.handle.net/2115/61042">http://hdl.handle.net/2115/61042</a>
Rights	The final publication is available at <a href="http://link.springer.com">link.springer.com</a>
Type	article (author version)
File Information	ICRE62.pdf



[Instructions for use](#)

1 **A new ghost flathead (Scorpaeniformes: Hoplichthyidae) from southwestern Australia**

2

3

4 **Yuki Nagano · Hisashi Imamura · Mamoru Yabe**

5

6

7 This article was registered in the Official Register of Zoological Nomenclature (ZooBank) as  
8 0D5FCD6D-C099-4F74-80A1-A88667681A82.

9 (Editorial note from the managing editor: please link the above register number to:

10 "<http://zoobank.org/urn:lsid:zoobank.org:pub:0D5FCD6D-C099-4F74-80A1-A88667681A82>  
11 ")

12

13 This article was published as an Online First article on the online publication date shown on  
14 this page. The article should be cited by using the doi number.

15

16 Y. Nagano (✉) · H. Imamura · M. Yabe

17 Laboratory of Marine Biology and Biodiversity (Systematic Ichthyology), Faculty of

18 Fisheries Sciences, Hokkaido University, 3-1-1 Minato-cho, Hakodate, Hokkaido 041-8611,

19 Japan

20 E-mail: [yuki.ghost\\_flatheads@fish.hokudai.ac.jp](mailto:yuki.ghost_flatheads@fish.hokudai.ac.jp)

21 Phone: +81 138 40 5540

22

23 Suggested running head: New Australian *Hoplichthys*

24 Manuscript category: full paper

25 Number of text pages: 14

26 Number of figures: 4

27 Number of table: 1

28

29 **Abstract** A new hoplichthyid species, *Hoplichthys mcgrouteri*, is described on the basis of  
30 six specimens (188–244 mm standard length) collected off southwestern Australia. It is  
31 clearly distinguished from its congeners by the following combination of characters:  
32 dorsal-fin rays V-14; anal-fin rays 16–17, usually 16; pectoral-fin rays 13–14 + 4–5 = 17–18,  
33 usually 14 + 4 = 18; infraorbitals mostly spineless; scales present on dorsal surface of body;  
34 vomerine tooth patch constricted medially, mostly separating teeth into bilaterally  
35 symmetrical patches; interorbit narrow [interorbital width 5.8–6.8 % of head length (HL)];  
36 and orbit relatively large (orbital diameter 41.8–44.9 % HL). The form of the vomerine  
37 tooth patch is unique to *H. mcgrouteri* in this genus.

38

39 **Keywords** *Hoplichthys mcgrouteri* · Hoplichthyidae · New species · Australia

40

41

42

43 **Introduction**

44

45 Ghost flatheads of the family Hoplichthyidae, which consist of only one genus *Hoplichthys*  
46 Cuvier in Cuvier and Valenciennes 1829 and 12 valid species, inhabit the continental shelves  
47 and their slopes at depths of ca. 50–1,500 m in the central and western Pacific and Indian  
48 oceans (Matsubara and Ochiai 1950a; McGrouther 1999; Nagano et al. 2012, 2013a, b).

49 *Hoplichthys* is characterized by an extremely depressed head, the dorsal surfaces of the head  
50 and body covered with many spines and serrated ridges, an elongated and mostly scaleless  
51 body, one or two rows of spines on the lateral scutes along the body, and the ventralmost three  
52 to five pectoral-fin rays free.

53 During our ongoing study of ghost flatheads, we found specimens of an undescribed  
54 species of *Hoplichthys* (Fig. 1) collected from southwestern Australia and deposited in the  
55 ichthyological collections of the Australian National Fish Collection, Commonwealth  
56 Scientific and Industrial Research Organization, Division of Marine and Atmospheric  
57 Research, Hobart (CSIRO), Museum Victoria, Melbourne (NMV) and the National Museum  
58 of Nature and Science, Tsukuba (NSMT). These specimens resemble *Hoplichthys haswelli*  
59 McCulloch 1907, which is known from southern Australia and New Zealand, in having  
60 mostly spineless infraorbitals, scales present on the dorsal surface of the body, V-14 dorsal-fin  
61 rays, usually 16 anal-fin rays and usually 18 total pectoral-fin rays, but differ from it in other  
62 morphological characters (e.g., form of vomerine tooth patch, interorbital width and orbital  
63 diameter). We herein describe them as a new species.

64

65

66 **Materials and methods**

67

68 Counts and proportional measurements follow Nagano et al. (2013b), except for head width 1

69 measured at the anterior margin of the eye, head width 2 at the inner base of the posteriormost  
70 preopercular spine, and head width 3 at the outer base of the posteriormost preopercular spine.  
71 Data for holotype are presented first, followed by those of paratypes in parentheses if different.  
72 Gill rakers were counted on the outer row of the first gill arch of the right side. Vertebrae  
73 were counted from radiographs. Sex was determined from the shape of gonads by  
74 microscope examination. Measurements were made with calipers to the nearest 0.1 mm.  
75 Standard and head lengths are abbreviated as SL and HL, respectively. Counts of spines on  
76 the head are given as “left side/right side”. The pectoral-fin ray count is shown as “joined  
77 pectoral-fin rays + free pectoral-fin rays = total pectoral-fin rays”. The terminology for  
78 spines and ridges on the dorsal surface of the head is given in Fig. 2, following Nagano et al.  
79 (2013b). Institutional abbreviations follow Fricke and Eschmeyer (2014).

80

81

82 ***Hoplichthys mcgrouteri* sp. nov.**

83 (New English name: McGrouter's ghost flathead) (Figs. 1–2, 3a, 4; Table 1)

84

85 **Holotype.** CSIRO H.6395-03, 218 mm SL, female, 35°14.02'S, 118°39.84'E–35°13.67'S,  
86 118°40.50'E, off Albany, Western Australia, 728–710 m depth, beam trawl, FR/V *Southern*  
87 *Surveyor*, 23 Nov. 2005.

88 **Paratypes.** Five specimens. CSIRO H.1704-06, 188 mm SL, sex undetermined,  
89 29°14.2'S, 113°52.2'E, off Geraldton, Western Australia, 556 m depth, demersal trawl, 28 Jan.  
90 1989; CSIRO H.2005-02, 208 mm SL, sex undetermined, 33°03.2'S, 114°25.2'E, off Bunbury,  
91 Western Australia, 701 m depth, bottom trawl, 10 Feb. 1989; CSIRO H.2601-01, 223 mm SL,  
92 female, 30°39.1'S, 114°27.7'E–30°39.0'S, 114°27.6'E, off Wedge Island, Western Australia,  
93 1,058–1,080 m depth, demersal trawl, FR/V *Southern Surveyor*, 9 Feb. 1991; NMV A.9617,  
94 240 mm SL, female, 32°03'S, 115°14'E–32°00'S, 115°15'E, 35 km west of Rottneest Island,

95 Western Australia, 510 m depth, FR/V *Southern Surveyor*, collected by M. F. Gomon, 12 Feb.  
96 1991; NSMT-P 112996, 244 mm SL, female, 31°32.9'S, 114°48.2'E, Western Australia, 603 m  
97 depth, R/V *Kaiyo-maru*, 15 Nov. 1975.

98 **Diagnosis.** A species of *Hoplichthys* with the following combination of characters:  
99 dorsal-fin rays V-14; anal-fin rays 16–17, usually 16; pectoral-fin rays 13–14 + 4–5 = 17–18,  
100 usually 14 + 4 = 18; infraorbitals mostly spineless; scales present on dorsal surface of body;  
101 vomerine tooth patch constricted medially mostly separating teeth into bilaterally symmetrical  
102 patches; interorbit narrow (interorbital width 5.8–6.8 % HL) and orbit relatively large (orbital  
103 diameter 41.8–44.9 % HL).

104 **Description.** Counts and proportional measurements are provided in Table 1.

105 Head extremely depressed, depth 3.4 (3.4–3.9) in head width 3. Body elongate, slightly  
106 depressed, depth 1.3 (1.1–1.7) in body width. Snout paddle-like; preoptic snout length  
107 longer than vertical eye diameter, 1.2 (1.1–1.3) in postorbital length. Anterior nostril located  
108 mesial to anterior part of lachrymal, possessing short tube and long cirrus on posterior margin;  
109 posterior nostril slit-like, located mesial to central part of lachrymal, of same size as anterior  
110 nostril. Single cephalic sensory pore located anterior to anterior nostril. Upper jaw slightly  
111 longer than lower jaw, but shorter than preoptic snout; posterior edge of maxilla not reaching  
112 below anterior margin of eye, but extending to base of posteriormost spine in inner ridge on  
113 first infraorbital. Teeth large and conical, forming tooth bands on jaws and palatines, and  
114 tooth patch on vomer; vomerine tooth patch constricted medially mostly separating teeth into  
115 bilaterally symmetrical patches, a few small teeth in single row across midline (Fig. 3a).  
116 Anterior margin of tongue concave. Orbit relatively large, its diameter almost equal to  
117 postorbital length. Eye relatively large; vertical eye diameter 1.9 (1.5–1.9) in preoptic snout  
118 length. Interorbit concave and relatively narrow; interorbital width 3.2 (3.0–4.0) in vertical  
119 eye diameter. Posterior margin of opercle relatively rounded. Lower margin of  
120 branchiostegal membrane fused with isthmus. Gill rakers extremely short and knob-like;

121 many minute spines on each raker. Several spines and ridges on dorsal surface of head (Fig.  
122 2). Single paired ridges on dorsal midline anteriorly on head, without spines on snout, but  
123 with some spines on inner margin of orbit. Single strongly developed spine on posterior  
124 margin of orbit. Lachrymal without spines, but anterolateral margin minutely serrated.  
125 Two ridges on first infraorbital, inner ridge on dorsal surface and outer ridge on lateral side;  
126 inner ridge smooth and without spines, except for single well developed spine directed  
127 posterodorsally on posterior edge; outer ridge devoid of spines. Two ridges on second  
128 infraorbital, inner ridge on dorsal surface and outer ridge on lateral side; inner ridge smooth  
129 and without spines, except for single well-developed spine directed posterodorsally on  
130 posterior edge; anterior part of outer ridge slightly serrated, and with minute laterally directed  
131 spines posteriorly. Ventral surface of lachrymal, and first and second infraorbitals smooth,  
132 without spines. Dorsal surface of third infraorbital mostly smooth, with single small spine  
133 directed dorsally on central portion. Fourth infraorbital smooth, without spines and ridges.  
134 Single row of preopercular spines present laterally; those anteriorly minute and directed  
135 laterally; penultimate spine better developed, directed posterodorsally; posteriormost spine  
136 largest, directed posteriorly, not reaching posterior margin of opercle. Dorsal surface of  
137 preopercle smooth, without spines and ridges. Single opercular spine directed posteriorly,  
138 not reaching posterior edge of opercle. Two ridges on dorsal surface of opercle directed  
139 posteriorly, radiating from anteromesial corner of opercle; outer ridge slightly serrated  
140 anteriorly, smooth (with a few spines) posteriorly, with terminal opercular spine; inner ridge  
141 with several small spines, directed toward posteromesial corner of opercle; no spines on  
142 lateral, mesial and middle parts of these two ridges. Single parietal spine large, directed  
143 posterodorsally; no spines around parietal spine. Single small spine present lateral to  
144 parietal spine. No spines in area between posterior margin of orbit and parietal spine.  
145 Single well-developed posttemporal spine present anterior to more strongly developed spine  
146 on first lateral scute; two ridges directed anteriorly from posttemporal spine; small spines on



147 inner ridge of posttemporal spine; no spines on outer ridge of posttemporal spine. No spines  
148 on ventral surface of lower jaw posterior to maxilla. Single ridge without humeral spine  
149 (with single humeral spine on its posterior edge on right side in one paratype) posterior to  
150 opercle. Single row of lateral scutes dorsolaterally along body; well-developed single spine  
151 directed posterodorsally on central portion of each scute, with small ridge on its inner base;  
152 spines becoming progressively larger posteriorly, posterior three spines becoming smaller  
153 posteriorly; no other spines on lateral scutes; terminal scute extending to caudal-fin base.  
154 Scales embedded in skin on dorsal surface of body, between lateral scutes on both sides from  
155 posterior area of parietal spines to base of caudal fin; scales absent ventrally. First dorsal fin  
156 low, originating above third lateral scute (third or junction between third and fourth lateral  
157 scutes) and ending above sixth lateral scute; length of first dorsal-fin base 7.4 (6.3–7.9) in HL;  
158 tip of adpressed dorsal fin not reaching origin of second dorsal fin; first to second dorsal-fin  
159 spines longest, and third to fifth dorsal-fin spines progressively shorter posteriorly. Second  
160 dorsal fin originating above junction between ninth and 10th lateral scutes and ending above  
161 22nd lateral scute (junction between 22nd and 23rd lateral scutes); length of second dorsal-fin  
162 base 1.1 in length of anal-fin base; second dorsal-fin soft ray longest and second to 14th  
163 dorsal-fin soft rays becoming progressively shorter posteriorly; last (14th) dorsal-fin soft ray  
164 shortest. All dorsal-fin spines and soft rays neither elongate nor filament-like. Pectoral fin  
165 originating just behind posterior edge of opercle, reaching 14th (13th) lateral scute; fourth and  
166 fifth (fourth, or fourth and fifth) rays longest, length 1.8 (1.8–2.0) in HL. Lower four (four  
167 or five) rays of pectoral fin thick and free, shorter than remaining joined pectoral-fin rays, not  
168 reaching anus; its length 2.9 (2.7–3.1) in HL. Pelvic-fin base anterior to pectoral-fin base;  
169 distal tip of pelvic fin reaching below fourth lateral scute (third or junction between third and  
170 fourth lateral scutes); pelvic-fin length 4.2 (4.4–4.7) in HL. Anal fin lower than second  
171 dorsal fin, originating below 10th lateral scute (junction between 10th and 11th lateral scutes),  
172 ending below junction between 24th and 25th lateral scutes; first anal-fin ray short, its length

173 1.3 (1.0–1.4) in length of last anal-fin ray. Caudal fin almost truncate with upper lobe  
174 slightly longer than lower lobe; depth of caudal peduncle 8.3 (6.7–7.8) in caudal-fin length.  
175 Anus slightly anterior to origin of anal fin.

176 *Color of fresh specimen* (based on photograph of holotype, Fig. 1a, b). Dorsal surface  
177 of head and body rusty brown to pale rusty brown; ventral side white. Dorsal fins light gray.  
178 Pectoral fin rusty on anterodorsal area and paler on posteroventral area; free pectoral-fin rays  
179 white. Pelvic fin white. Upper, posterior and lower margins of caudal fin gray; small  
180 brown spot on ventral portion of caudal-fin base.

181 *Color of preserved specimen.* Color mostly faded, light yellowish-white on head and  
182 body. Light gray on upper edges of opercles, dorsal fins, lower margin of anal fin and bases  
183 of spines on each lateral scute. Margins of caudal fin gray. Peritoneum black.

184 **Distribution.** Off the southwestern corner of Australia, at depths of 510–1,080 m.

185 **Etymology.** The specific name “*mcgrouteri*” recognizes Mr. Mark A. McGrouther,  
186 the collection manager of Ichthyology of Australian Museum (AMS), for his valuable  
187 contributions to the taxonomy of the Hoplichthyidae.

188 **Remarks.** *Hoplichthys mcgrouteri* is most similar to *H. haswelli* and differs from its  
189 other congeners [*Hoplichthys langsdorfii* Cuvier in Cuvier and Valenciennes 1829,  
190 *Hoplichthys citrinus* Gilbert 1905, *Hoplichthys platophrys* Gilbert 1905, *Hoplichthys gilberti*  
191 Jordan and Richardson 1908, *Hoplichthys regani* Jordan 1908, *Hoplichthys acanthopleurus*  
192 Regan 1908, *Hoplichthys ogilbyi* McCulloch 1914, *Hoplichthys fasciatus* Matsubara 1937,  
193 *Hoplichthys gregoryi* (Fowler 1938), *Hoplichthys prosemion* (Fowler 1938), *Hoplichthys*  
194 *smithi* (Fowler 1938), *Hoplichthys pectoralis* (Fowler 1943), *Hoplichthys filamentosus*  
195 Matsubara and Ochiai 1950b, *Hoplichthys mimaseanus* Nagano, Endo and Yabe 2013 and  
196 *Hoplichthys imamurai* Nagano, McGrouther and Yabe 2013] in having five dorsal-fin spines,  
197 14 dorsal-fin soft rays, usually 16 anal-fin rays, usually 18 total pectoral-fin rays, mostly  
198 spineless infraorbitals, scales on the dorsal surface of the body and a black peritoneum (vs. six

199 dorsal-fin spines, 15 dorsal-fin soft rays, usually 17 anal-fin rays, usually 16 pectoral-fin rays,  
200 many spines on infraorbitals, body naked except for lateral scutes and colorless peritoneum in  
201 other congeners). *Hoplichthys mcgrouteri* can be clearly distinguished from *H. haswelli* in  
202 having the vomerine tooth patch constricted medially, mostly separating teeth into bilaterally  
203 symmetrical patches (vs. vomerine tooth patch deeply notched posteromedially, but broadly  
204 continuous anteriorly in *H. haswelli*) (Fig. 3), a narrower interorbit (interorbital width 5.8–  
205 6.8 % HL in *H. mcgrouteri* vs. 9.2–14.8 % HL in *H. haswelli*; Fig. 4a) and a relatively larger  
206 orbit (orbital diameter 41.8–44.9 % HL vs. 37.3–41.0 % HL; Fig. 4b). In addition, *H.*  
207 *mcgrouteri* usually has larger eyes (19.7–22.8 % HL) and shorter pelvic fins (8.7–9.4 % SL)  
208 than *H. haswelli* (eye diameter 13.9–20.3 % HL and pelvic-fin length 8.5–10.9 % SL),  
209 although some overlap exists in proportional values (Fig. 4c, d). The form of the vomerine  
210 tooth patch is unique to *H. mcgrouteri* within the genus.

211 Some species of *Hoplichthys* (*H. langsdorfii*, *H. citrinus*, *H. gilberti*, *H. ogilbyi* and *H.*  
212 *filamentosus*) have sexual dimorphism in the forms of the first and second dorsal fins and  
213 caudal fin (Nagano et al. 2013b). However sexual dimorphism, including the forms of the  
214 dorsal and caudal fins, was not observed in *H. haswelli* (in seven males and 13 females),  
215 which has most similar morphological characters to *H. mcgrouteri*. Although all examined  
216 specimens of *H. mcgrouteri* are female or sex undetermined (in four and two specimens,  
217 respectively), we consider the forms of the dorsal and caudal fins of this new species not to be  
218 dimorphic sexually.

219 **Comparative material.** *Hoplichthys langsdorfii* (14 specimens including 12 males and  
220 2 females, Tosa Bay, Japan): HUMZ 47450 (144 mm SL), HUMZ 75338 (151 mm SL),  
221 HUMZ 79116 (153 mm SL), HUMZ 107569 (159 mm SL), HUMZ 110859–110860 (2  
222 specimens, 158–167 mm SL), HUMZ 204809 (155 mm SL), HUMZ 205049–205054 (6  
223 specimens, 137–159 mm SL), HUMZ 207784 (153 mm SL). *Hoplichthys citrinus* (8  
224 specimens including 5 males and 3 females, Hawaii): USNM 51610 (holotype, 152 mm SL),

225 AMS I.12813 (paratype, 168 mm SL), USNM 51670 (paratype, 155 mm SL), USNM 51704  
226 (5 paratypes, 135–185 mm SL). *Hoplichthys platophrys* (1 specimen, sex undetermined):  
227 USNM 51620 (holotype, 60.9 mm SL, Hawaii). *Hoplichthys gilberti* (10 specimens  
228 including 1 male, 4 females and 5 specimens sex undetermined, Suruga Bay, Japan): USNM  
229 51271 (holotype, 127 mm SL), SU 20229 (2 paratypes, 110–162 mm SL), USNM 398507 (7  
230 paratypes, 78.2–140 mm SL). *Hoplichthys regani* (1 specimen, male): SU 22390 (holotype,  
231 145 mm SL, Kagoshima, Japan). *Hoplichthys acanthopleurus* (2 specimens including 1  
232 male and 1 female): BMNH 1908.3.23.210–211 (syntypes, 150–157 mm SL, Saya de Malha  
233 Bank). *Hoplichthys ogilbyi* (2 specimens including 1 male and 1 female, Queensland): AMS  
234 E.2974 (holotype, 163 mm SL), AMS I.12812 (paratype, 132 mm SL). *Hoplichthys*  
235 *fasciatus* (11 specimens, sex undetermined): BSKU 8896 (47.0 mm SL, Tosa Bay, Japan),  
236 BSKU 9512–9513 (2 specimens, 45.6–48.5 mm SL, Tosa Bay, Japan), BSKU 11376 (43.4  
237 mm SL, Tosa Bay, Japan), BSKU 45862 (52.2 mm SL, Tosa Bay, Japan), BSKU 64453 (44.6  
238 mm SL, Tosa Bay, Japan), BSKU 80757 (48.2 mm SL, Tosa Bay, Japan), BSKU 94894 (51.5  
239 mm SL, Tosa Bay, Japan), BSKU 95743 (41.3 mm SL, Tosa Bay, Japan), FAKU 1816 (43.7  
240 mm SL, Mie, Japan), HUMZ 205016 (42.9 mm SL, Tosa Bay, Japan). *Hoplichthys gregoryi*  
241 (5 specimens including 1 male and 4 females, Philippines): USNM 98862 (holotype, 168 mm  
242 SL), USNM 150813 (4 paratypes, 119–180 mm SL). *Hoplichthys prosemion* (1 specimen,  
243 male): USNM 98863 (holotype, 148 mm SL, Philippines). *Hoplichthys smithi* (1 specimen,  
244 sex undetermined): USNM 59588 (85.9 mm SL, Kagoshima, Japan). *Hoplichthys pectoralis*  
245 (1 specimen, sex undetermined): USNM 99503 (holotype, 61.1 mm SL, Philippines).  
246 *Hoplichthys filamentosus* (1 specimen, female): FAKU 11918 (holotype, 110 mm SL, Suruga  
247 Bay, Japan). *Hoplichthys mimaseanus* (2 specimens including 1 male and 1 female):  
248 NSMT-P 109034 (holotype, 218 mm SL, Tosa Bay, Japan), ASIZP 63198 (paratype, 206 mm  
249 SL, Senkaku Islands). *Hoplichthys imamurai* (3 specimens, male, Western Australia): AMS  
250 I.22807-040 (holotype, 143 mm SL), AMS I.22807-066 (paratype, 144 mm SL), AMS

251 I.31156-016 (paratype, 129 mm SL). *Hoplichthys haswelli* (25 specimens including 7 males,  
252 13 females and 5 specimens sex undetermined): New South Wales: AMS I.7892 (holotype,  
253 369 mm SL), AMS I.15968-009 (2 specimens, 259–336 mm SL), AMS I.15970-013 (232 mm  
254 SL), AMS I.15990-003 (247 mm SL), AMS I.18125-005 (384 mm SL), AMS I.18838-030  
255 (376 mm SL), AMS I.18838-031 (299 mm SL), AMS I.18838-032 (345 mm SL), AMS  
256 I.25318-006 (1 of 15 specimens, 357 mm SL), AMS I.31947-007 (1 of 3 specimens, 197 mm  
257 SL), AMS I.33436-001 (325 mm SL), AMS I.43247-002 (1 of 2 specimens, 269 mm SL),  
258 CSIRO CA.3208 (161 mm SL), USNM 399491 (182 mm SL); Victoria: CSIRO H.3522-03  
259 (303 mm SL), NMV A.2988 (249 mm SL); Bass strait between Victoria and Tasmania: NMV  
260 A.12322 (1 of 2 specimens, 222 mm SL); Western Australia: CSIRO H.1807-01 (377 mm SL),  
261 CSIRO H.3012-01 (336 mm SL), CSIRO H.6414-15 (346 mm SL), CSIRO H.6414-16 (334  
262 mm SL), CSIRO H.6414-17 (340 mm SL), CSIRO H.6414-18 (362 mm SL), NMV A.12324  
263 (1 of 2 specimens, 159 mm SL).

264

265 **Acknowledgments** We are deeply indebted to M. Gomon (NMV) for his critical reading of  
266 this manuscript. We are most grateful to the following researchers and museum specialists  
267 for specimen loans and assistance during the first author's visit to their institutions: M.  
268 McGrouther, A. Hay and S. Reader (AMS), M. Gomon and D. Bray (NMV), A. Graham and J.  
269 Pogonoski (CSIRO), K. Matsuura and G. Shinohara (NSMT), J. Williams, J. Finan, D. Smith  
270 and J. Clayton (USNM), Y. Kai (FAKU), T. Iwamoto and D. Catania (CAS), J. Maclaine and  
271 T. Heath (BMNH), H. Ho (NMMP), and K. Shao and P. Lin (ASIZP). Our appreciation is  
272 also extended to A. Graham (CSIRO) for providing us color photographs of holotype. We  
273 express our gratitude to T. Kawai (HUMZ) for his generous support of this study and the two  
274 anonymous referees for providing valuable comments.

275

276

277 **References**

278

279 Cuvier G, Valenciennes A (1829) Histoire naturelle des poissons. Tome quatrième. Livre  
280 quatrième. Des acanthoptérygiens á joue cuirassée. FG Levrault, Paris

281 Fowler HW (1938) Descriptions of new fishes obtained by the United States Bureau of  
282 Fisheries steamer “*Albatross*”, chiefly in Philippine seas and adjacent waters. Proc US  
283 Natl Mus 85:31–135

284 Fowler HW (1943) Contributions to the biology of the Philippine Archipelago and adjacent  
285 regions. Descriptions and figures of new fishes obtained in Philippine seas and  
286 adjacent waters by the United States Bureau of Fisheries steamer “*Albatross*”. Bull US  
287 Natl Mus 100 14:i–iii + 53–91

288 Fricke R, Eschmeyer WN (2014) A guide to fish collections in the catalog of fishes. Online  
289 version, updated 18 June 2014.  
290 <http://researcharchive.calacademy.org/research/ichthyology/catalog/collections.asp>.  
291 Accessed 2 July 2014

292 Gilbert CH (1905) Section II. The deep-sea fishes of the Hawaiian Islands. In: Jordan DS,  
293 Evermann BW (eds) The aquatic resources of the Hawaiian Islands. Bulletin of the  
294 United States Fish Commission 23. Government Printing Office, Washington, pp 577–  
295 713, pls 66–101

296 Jordan DS (1908) Ichthyology. Ichthyological Notes. Am Naturalist 42:800–801

297 Jordan DS, Richardson RE (1908) A review of the flatheads, gurnards and other mail-cheeked  
298 fishes of the waters of Japan. Proc US Natl Mus 33:629–670

299 Matsubara K (1937) Studies on the deep-sea fishes of Japan. IV, a new mail-cheeked fish,  
300 *Hoplichthys fasciatus*, belonging to Hoplichthyidae. Zool Mag 49:264–265

301 Matsubara K, Ochiai A (1950a) Studies on Hoplichthyidae, a family of mail-cheeked fishes,  
302 found in Japan and its adjacent waters, II. Jpn J Ichthyol 1:82–88

303 Matsubara K, Ochiai A (1950b) Studies on Hoplichthyidae, a family of mail-cheeked fishes,  
304 found in Japan and its adjacent waters, III. Jpn J Ichthyol 1:145–156

305 McCulloch AR (1907) The results of deep sea investigation in the Tasman Sea. II, the  
306 expedition of the “Woy Woy”. 1, fishes and crustaceans from eight hundred fathoms.  
307 Rec Aust Mus 6:345–355, pls 63–65

308 McCulloch AR (1914) Report on some fishes obtained by the F.I.S. “Endeavour” on the  
309 coasts of Queensland, New South Wales, Victoria, Tasmania, south and south-western  
310 Australia, part II. Biol Res Fish Exp F.I.S. Endeavour 2:77–165, pls 13–34

311 McGrouther MA (1999) Hoplichthyidae. In: Carpenter KE, Niem VH (eds) FAO species  
312 identification guide for fishery purposes. The living marine resources of the western  
313 Central Pacific, vol 4. Bony fishes part 2 (Mugilidae to Carangidae). FAO, Rome, pp  
314 2422–2424

315 Nagano Y, Endo H, Yabe M (2013a) *Hoplichthys mimaseanus*, a new ghost flathead from East  
316 Asia and Western Australia (Teleostei: Hoplichthyidae). Bull Natl Mus Nat Sci, Ser A  
317 Suppl 7:1–9

318 Nagano Y, Imamura H, Yabe M (2012) Taxonomic status of *Hoplichthys regani* Jordan 1908  
319 (Scorpaeniformes: Hoplichthyidae), with comments on its authorship. Ichthyol Res  
320 59:255–263

321 Nagano Y, McGrouther MA, Yabe M (2013b) A new species of the hoplichthyid genus  
322 *Hoplichthys* (Teleostei: Hoplichthyidae) from northern Western Australia. Zootaxa  
323 3681:241–248

324 Regan CT (1908) Report on the marine fishes collected by Mr J Stanley Gardiner in the  
325 Indian Ocean. Trans Linn Soc London, Ser 2, Zool 12:217–255, pls 23–32

326

327

328 **Table 1** Counts and proportional measurements of *Hoplichthys mcgrouteri* sp. nov. and *H.*  
 329 *haswelli*  
 330

	<i>H. mcgrouteri</i>		<i>H. haswelli</i>	
	Holotype	Paratypes	Holotype	Non-types
	CSIRO H.6395-03	( <i>n</i> = 5)	AMS I.7892	( <i>n</i> = 24)
Standard length (SL, mm)	218	188–244	369	159–384
Counts				
First dorsal-fin rays	V	V	Damaged	V–VI
Second dorsal-fin rays	14	14	14	14–15
Anal-fin rays	16	16–17	16	15–16
Pectoral-fin rays	14 + 4 = 18	13–14 + 4–5 = 17–18	15 + 4 = 19	13–15 + 4–5 = 17–19
Pelvic-fin rays	I, 5	I, 5	I, 5	I, 5
Gill rakers	3 + 14 = 17	3–4 + 13–15 = 16–19	3 + 14 = 17	3 + 12–15 = 15–18
Branchiostegals	7	7	7	7
Vertebrae	26	26	26	26
Lateral scutes	27	27	27	26–28
Head spines				
Spines on lachrymal	0/0	0/0	Uncounted	Uncounted
Inner ridge spines on first infraorbital	1/1	1/1	Uncounted	Uncounted
Outer ridge spines on first infraorbital	0/0	0/0	Uncounted	Uncounted
Inner ridge spines on second infraorbital	1/1	1/1	Uncounted	Uncounted
Outer ridge spines on second infraorbital	0/0	0/0	Uncounted	Uncounted
Preopercular spines	7/7	6–7/6–7	Uncounted	Uncounted
Spines on ventral surface of lower jaw	0/0	0/0	0/0	0/0
Proportional measurements (% SL)				
Head length (HL)	39.4	39.8–41.6	40.5	38.9–42.4
Body depth	7.9	6.6–8.2	9.7	5.8–8.7
Body width	10.3	8.6–11.0	9.7	8.4–12.9
Pre-first dorsal length	39.1	39.5–41.6	Damaged	37.6–41.8
Length of first dorsal-fin base	5.3	5.1–6.3	Damaged	5.5–7.2
Length of first dorsal-fin spine	5.9	8.3–9.5	Damaged	6.9–10.1
Length of second dorsal-fin spine	5.8	8.0–8.8	Damaged	7.8–9.9
Length of third dorsal-fin spine	5.9	7.0–8.8	Damaged	6.4–9.1
Length of fourth dorsal-fin spine	4.2	4.1–6.9	Damaged	4.3–7.6
Length of fifth dorsal-fin spine	2.6	2.8–4.6	Damaged	2.8–5.1
Pre-second dorsal length	51.9	53.1–55.0	55.6	51.1–55.7



Length of second dorsal-fin base	34.7	32.7–34.9	34.1	31.9–36.4
Length of first dorsal-fin soft ray	Damaged	10.6–12.4	11.5	10.6–13.0
Length of second dorsal-fin soft ray	13.4	11.6–12.9	12.2	11.8–13.3
Length of sixth dorsal-fin soft ray	10.6	9.7–10.4	10.2	9.6–11.3
Length of 13th dorsal-fin soft ray	5.7	5.0–6.3	5.7	5.0–7.0
Length of 14th dorsal-fin soft ray	3.9	3.1–4.0	4.4	3.4–5.4
Pre-anal length	53.8	54.8–57.8	58.3	53.2–59.2
Length of anal-fin base	39.4	36.0–39.2	36.2	33.8–39.6
Length of first anal-fin ray	3.4	3.1–4.2	2.1	2.6–4.6
Pectoral-fin length	22.0	20.7–21.9	23.3	22.0–29.2
Length of longest free pectoral-fin ray	13.4	13.3–14.6	11.2	10.5–14.7
Pelvic-fin length	9.3	8.7–9.4	9.8	8.5–10.9
Caudal peduncle depth	1.9	1.8–2.2	2.5	2.0–2.7
Length of upper caudal peduncle	14.0	12.1–13.3	10.3	10.3–14.4
Length of caudal peduncle	7.4	6.0–7.4	6.6	5.4–8.0
Caudal-fin length	16.1	14.5–16.6	13.9	12.8–16.9
Proportional measurements (% HL)				
Head depth	18.8	17.2–18.5	24.2	14.0–23.4
Head width 1	44.0	40.3–44.8	53.3	44.0–52.3
Head width 2	49.7	43.7–50.4	61.7	50.2–64.0
Head width 3	64.4	61.9–69.1	77.5	64.5–81.3
Preoptic snout length	37.0	34.3–38.0	36.3	34.8–38.9
Preorbital snout length	16.8	16.5–17.5	17.1	16.2–19.2
Orbital diameter	41.8	41.8–44.9	39.8	37.3–41.0
Vertical eye diameter	19.7	20.3–22.8	17.7	13.9–20.3
Horizontal eye diameter	14.3	14.3–17.6	13.3	9.2–14.9
Interorbital width	6.1	5.8–6.8	14.8	9.2–14.5
Postorbital length	43.7	41.6–44.6	46.7	43.9–47.7
Upper jaw length	33.9	33.4–36.8	37.6	33.2–37.9
Lower jaw length	32.0	31.0–34.3	38.4	32.9–36.5

331

332

333 Figure legends:

334

335 **Fig. 1** Lateral view in fresh condition (**a**), dorsal view in fresh condition (**b**) and drawing in  
336 dorsal view (**c**) of *Hoplichthys mcgrouteri* sp. nov., CSIRO H.6395-03, holotype, female,  
337 218 mm SL

338

339 **Fig. 2** Dorsal view of head of *Hoplichthys mcgrouteri* sp. nov., showing series of spines  
340 and ridges. 1 inner ridge of spines on the first infraorbital, 2 outer ridge of spines on the first  
341 infraorbital, 3 inner ridge of spines on the second infraorbital, 4 outer ridge of spines on the  
342 second infraorbital, 5 preopercular spines, 6 opercular spine, 7 parietal spine, 8 posttemporal  
343 spine and 9 spines on lateral scutes; *scale bar* 10 mm

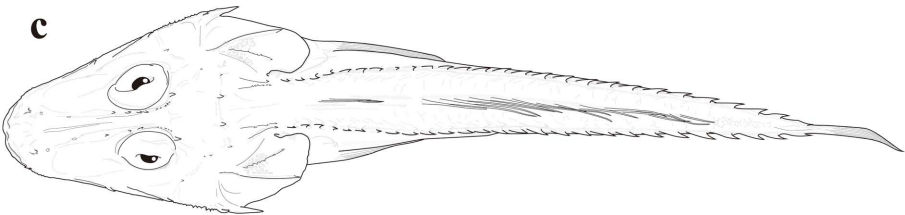
344

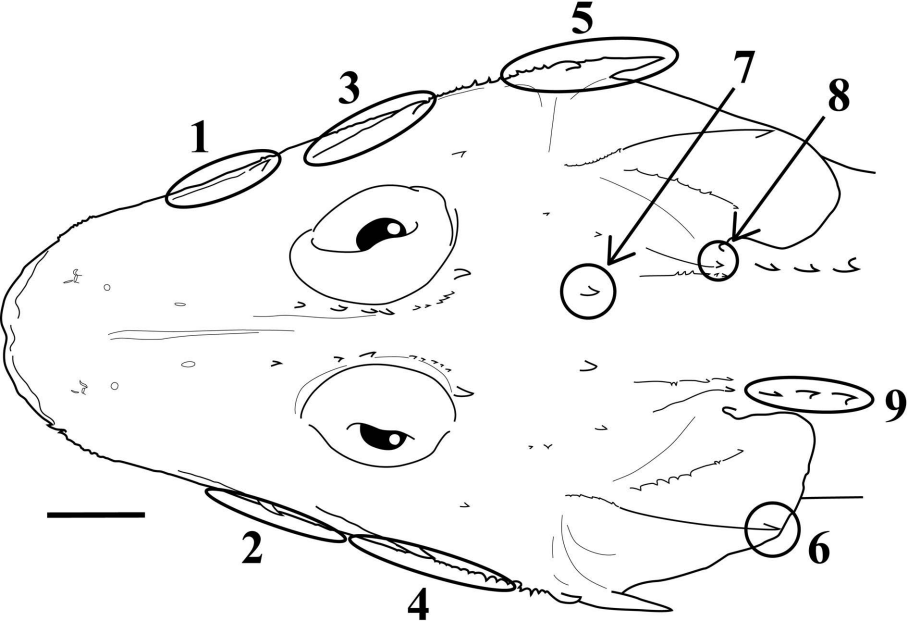
345 **Fig. 3** Ventral views of vomerine teeth showing form of tooth patch of **a** *Hoplichthys*  
346 *mcgrouteri* sp. nov. (CSIRO H.2005-02, 208 mm SL, paratype) and **b** *H. haswelli* (CSIRO  
347 CA.3208, 161 mm SL). *Scale bars* 4.0 mm

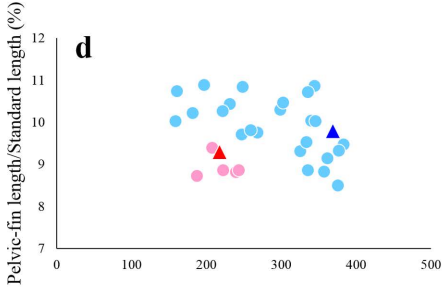
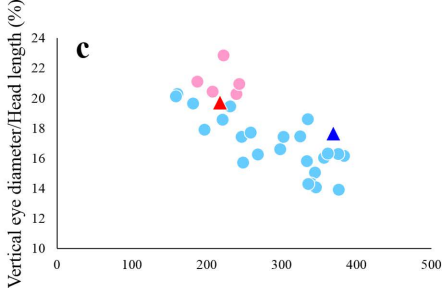
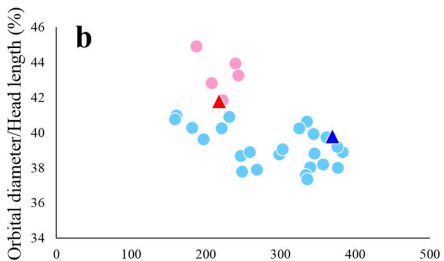
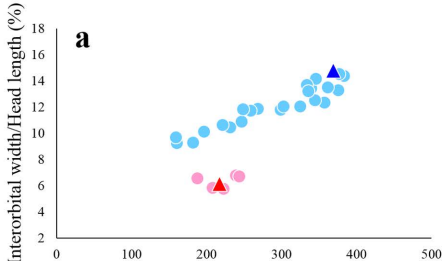
348

349 **Fig. 4** Relationships of **a** interorbital width to head length, **b** orbital diameter to head length,  
350 **c** vertical eye diameter to head length and **d** pelvic-fin length to standard length relative to  
351 standard length. *Red* and *pink* *Hoplichthys mcgrouteri* sp. nov., *blue* and *light blue* *H.*  
352 *haswelli*, *triangle* holotypes

353

**a****b****c**





Standard length (mm)

