

G2XX-IP67 / G3XX-IP67 SERIES

SEALED IP67 POLYCARBONATE AND ABS ENCLOSURES



PRODUCT INFORMATION

- The lid and base incorporate a tongue and groove sealing system with silicone adhesive.
- Wall mounting holes and lid fixing screws are outside the sealing area thus preventing the ingress of moisture and dust.
- Design to IP67 of IEC 529 (Dust and Hoseproof).
- Bosses on internal base allow fixing of PCB's horizontally or connection of terminals with M3X4mm self-tapping screws.
- Internal guide slots for mounting PCB assemblies vertically.
- Available with clear or light grey lids.



G203-IP67



G212C-IP67



G331-IP67

PC
(G2XX-IP67)
(G2XXC-IP67)

- Material : Polycarbonate (UL94-HB)
- Moulded in : Light grey
- Operating temperature : -40°C to 120°C
- Clear lid is available on request

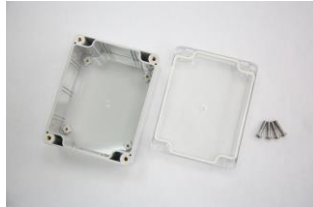
ABS
(G3XX-IP67)

- Material : High Impact ABS (UL94-HB)
- Moulded in : Dark grey
- Operating temperature : -20°C to 80°C

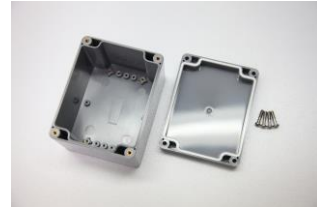
Content



G203-IP67



G212C-IP67



G331-IP67

MATERIAL : POLYCARBONATE		EXTERNAL DIMENSION(mm)	MATERIAL : ABS
Light Grey Lid + Light Grey Base	Clear Lid + Light Grey Base		Dark Grey Lid + Dark Grey Base
Item No.	Item No.		Item no.
G201-IP67	G201C-IP67	64 x 58 x 35	G302-IP67
G203-IP67	G203C-IP67	115 x 65 x 40	G304-IP67
G205-IP67	G205C-IP67	115 x 65 x 55	G308-IP67
G212-IP67	G212C-IP67	115 x 90 x 55	G311-IP67
G214-IP67	G214C-IP67	171 x 121 x 55	G313-IP67
G218-IP67	G218C-IP67	222 x 146 x 55	G317-IP67
G221-IP67	G221C-IP67	115 x 90 x 80	G331-IP67
G223-IP67	G223C-IP67	171 x 121 x 80	G340-IP67
G229-IP67	G229C-IP67	195 x 80 x 55	G346-IP67
G232-IP67	G232C-IP67	222 x 146 x 75	G353-IP67
G250-IP67	G250C-IP67	52 x 50 x 35	G362-IP67
G256-IP67	G256C-IP67	82 x 80 x 55	G366-IP67
G258-IP67	G258C-IP67	160 x 80 x 55	G368-IP67
G265-IP67	G265C-IP67	160 x 80 x 85	G369-IP67
G278-IP67	G278C-IP67	120 x 120 x 60	G386-IP67
G279-IP67	G279C-IP67	120 x 120 x 90	G387-IP67
G287-IP67	G287C-IP67	160 x 160 x 60	G396-IP67
G288-IP67	G288C-IP67	160 x 160 x 90	G399-IP67
NEW G2691-IP67	G2691C-IP67	200 x 120 x 75	G3735-IP67
NEW G2385-IP67	G2385C-IP67	265 x 185 x 95	G3783-IP67
NEW G2018-IP67	G2018C-IP67	240 x 160 x 90	G3008-IP67
NEW G2025-IP67	G2025C-IP67	240 x 160 x 120	G3019-IP67
NEW G20295-IP67	G20295C-IP67	300 x 230 x 86	G30285-IP67
NEW G20385-IP67	G20385C-IP67	300 x 230 x 111	G30312-IP67
NEW G20583-IP67	G20583C-IP67	360 x 200 x 150	G30393-IP67

▲ Lid fixing screw are M4 stainless steel (non-magnetic) into threaded brass inserts.

▲ For the detail drawings of the new products, please check our website (www.gainta.com.tw).

G2XXMF-IP67 / G3XXMF-IP67 SERIES

SEALED IP67 POLYCARBONATE AND ABS ENCLOSURES WITH MOUNTING FLANGE



PRODUCT INFORMATION

- The lid and base incorporate a tongue and groove sealing system with silicone adhesive.
- Wall mounting holes and lid fixing screws are outside the sealing area thus preventing the ingress of moisture and dust.
- Design to IP67 of IEC 529 (Dust and Hoseproof).
- Bosses on internal base allow fixing of PCB's horizontally or connection of terminals with M3X4mm self-tapping screws.
- Internal guide slots for mounting PCB assemblies vertically.
- Available with clear or light grey lids.



G212MF-IP67



G205CMF-IP67



G362MF-IP67

Content

PC
(G2XXMF-IP67)
(G2XXCMF-IP67)

- Material : Polycarbonate (UL94-HB)
- Moulded in : Light grey
- Operating temperature : -40°C to 120°C
- Clear lid is available on request
- Mounting flange is designed on the bottom of the base, so the base can be mounted with pan head type of screws on the wall easily

** Detailed screw size please refer the product drawing



G212MF-IP67



G205CMF-IP67



G362MF-IP67

ABS
(G3XXMF-IP67)

- Material : High Impact ABS (UL94-HB)
- Moulded in : Dark grey
- Operating temperature : -20°C to 80°C
- Mounting flange is designed on the bottom of the base, so the base can be mounted with pan head type of screws on the wall easily

** Detailed screw size please refer the product drawing

MATERIAL : POLYCARBONATE		EXTERNAL DIMENSION(mm)	MATERIAL : ABS
Light Grey Lid + Light Grey Base	Clear Lid + Light Grey Base		Dark Grey Lid + Dark Grey Base
Item No.	Item No.		Item no.
G200MF-IP67	G200CMF-IP67	90 x 35 x 35	G300MF-IP67
G201MF-IP67	G201CMF-IP67	64 x 58 x 35	G302MF-IP67
G203MF-IP67	G203CMF-IP67	115 x 65 x 40	G304MF-IP67
G205MF-IP67	G205CMF-IP67	115 x 65 x 55	G308MF-IP67
G212MF-IP67	G212CMF-IP67	115 x 90 x 55	G311MF-IP67
G214MF-IP67	G214CMF-IP67	171 x 121 x 55	G313MF-IP67
G218MF-IP67	G218CMF-IP67	222 x 146 x 55	G317MF-IP67
G221MF-IP67	G221CMF-IP67	115 x 90 x 80	G331MF-IP67
G223MF-IP67	G223CMF-IP67	171 x 121 x 80	G340MF-IP67
G232MF-IP67	G232CMF-IP67	222 x 146 x 75	G353MF-IP67
G250MF-IP67	G250CMF-IP67	52 x 50 x 35	G362MF-IP67
G256MF-IP67	G256CMF-IP67	82 x 80 x 55	G366MF-IP67
G258MF-IP67	G258CMF-IP67	160 x 80 x 55	G368MF-IP67
G265MF-IP67	G265CMF-IP67	160 x 80 x 85	G369MF-IP67
G278MF-IP67	G278CMF-IP67	120 x 120 x 60	G386MF-IP67
G279MF-IP67	G279CMF-IP67	120 x 120 x 90	G387MF-IP67
NEW G2691MF-IP67	G2691CMF-IP67	200 x 120 x 75	G3735MF-IP67
NEW G2385MF-IP67	G2385CMF-IP67	265 x 185 x 95	G3783MF-IP67

▲ Lid fixing screw are M4 stainless steel (non-magnetic) into threaded brass inserts.

▲ For the detail drawings of the new products, please check our website (www.gainta.com.tw).