

EPSON PRODUCT SUPPORT BULLETIN

Date:	04/20/2009	Originator:	JAM
PSB #:	PSB.2009.06.001	Authorization:	<i>Kas</i>
Reference:	TI 09-05e Rev. A/B	Total Pages:	5
Product(s):	PowerLite 735c / Cinema 500 / 737c / 745c / 755c / 765c / 830p / 835p / 1705c / 1715c / 6100i / 6110i / 7800p / 7850p / 7900NL / 8300i / 8300i with EasyMP.net module / 9300NL / 1815p / 1825 / 822p / 83c / 822+ / 83+ / G5000 / Pro G5150 / Pro G5350 / Pro G5200W / 1725 / 1735W / 400W / 410W / 84 / 85 / 825 / 826W PowerLite 61p / 81p / 82c / 821p / 1810 / 260d (Latin America) / 280d (Latin America) with TCP/IP to Serial converter		
Subject:	Release of EMP Monitor for Windows version 4.30		

This bulletin was created to inform you of the release of the new version 4.30 of the Epson EMP Monitor software utility.

Description of Change:

Improvements have been made to the EMP Monitor software utility.

Note: For the PowerLite 61p / 81p / 82c / 821p / 1810 / 260d (Latin America) / 280d (Latin America) models, a serial to TCP/IP conversion adapter is necessary. The function of Auto Update does not work for these models. You need to manually click on refresh to get an updated status of projectors.

Reason:

The improved points of version 4.30 are as follows:

Application	EMP Monitor
Version upgraded	Version 4.22 → Version 4.30
Improved points	(1) Addition of 7 new languages - Indonesian, Croat, Slovak, Bulgarian, Malay, Vietnamese, and Hebrew Existing 27 languages - Chinese (Traditional), Netherlands, Danish, Polish, Hungarian, Czech, Romanian, Slovene, Norwegian, Swedish, Finnish, Russian, Ukrainian, Greek, Turkish, Arabic (Windows NT4 does not support), English, Japanese, French, German, Italy, Spanish, Portuguese, Chinese (Simplified), Korean, Catalan, Thai

(2) Addition of Input Source (Only PowerLite 84 / 85 / 825 / 826W)
Previous version of EMP Monitor included USB Display, USB and LAN as one source: EasyMP.

The input source buttons for USB display, USB, and LAN are available as separate input sources as shown below:

- Old version - EMP Monitor V4.22

EMP Monitor V4.22



- New version - EMP Monitor V4.30

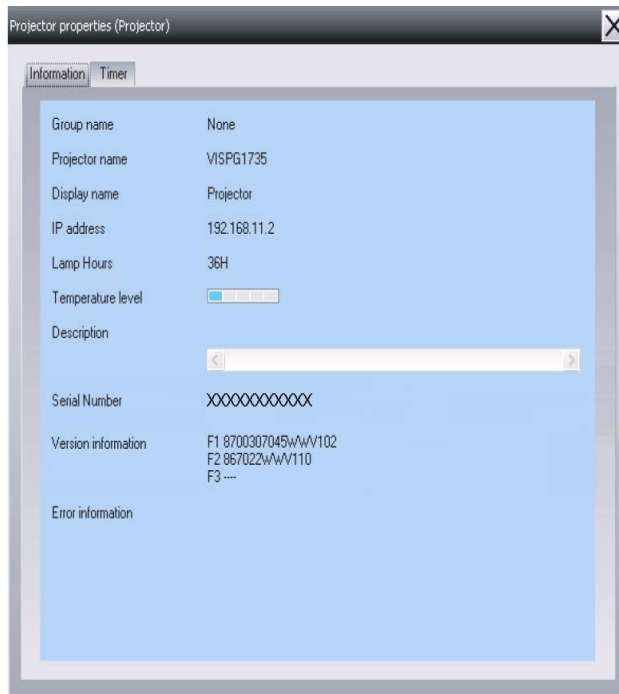
EMP Monitor V4.30



(3) New feature for the PowerLite 84 / 85 / 825 / 826W.

Displays projector's serial number in the Menu settings

- The projector's serial number is now displayed in the projector's menu under "info",
- EMP Monitor can also display the projector's serial number as shown below:



Limitations	When the PowerLite1725 / 1735W exhibit a Lamp Cover Open error state, EMP Monitor cannot detect the error. The reason is that when the lamp cover is opened, the primary power source that reports the error state to EMP Monitor is turned off immediately. This is different from other models which make the secondary power source turn off under the same condition.
--------------------	---

Note: EMP Monitor Ver. 4.xx is not compatible with EMP Monitor Ver. 3.05 and earlier versions. EMP Monitor Ver. 4.xx cannot read the setting files of EMP Monitor Ver. 3.05 and earlier versions.

System Requirements:

OS	<ul style="list-style-type: none"> Windows 98 SE / Me / NT 4.0 (SP6) *Except Arabic and Hebrew / Windows 2000 Pro / XP Home Edition / XP Professional (32 bit) / Vista Home Basic / Home Premium / Ultimate / Business / Enterprise (32 bit) *Except Ukrainian / Vista SP1 Home Basic / Home Premium / Ultimate / Business / Enterprise (32 bit) Internet Explorer Ver. 5.0 or later must be installed
CPU	Minimum: Pentium MMX 166 MHz (Recommended: Pentium II 233 MHz or higher)
Memory	At least 64 MB (Recommended: 128 MB or above)

Available hard disk space	At least 50 MB
Display	SVGA (800x600) or higher resolution, 32 bit or higher display color

Obtaining the Update:

Download [epson13055.exe](http://www.epson.com) from www.epson.com to get the version 4.30 update for EMP Monitor. The files are extracted and copied to C:\EPSON\epson13055_emp_monitor_430.

This file is a self-extracting archive and will start the installation utility for EMP Monitor. Follow the on-screen instructions during the installation process.

Software Upgrade History:

Version	Release date	Remarks
3.00	December 25, 2002	Supported PowerLite 735c
3.01	February 26, 2003	Supported PowerLite 7800p / 8300i
3.02	April 18, 2003	Supported PowerLite 7850p / 8300i with EasyMP.net option module
3.03	November 21, 2003	Supported PowerLite Cinema 500
3.04	April 1, 2004	Supported Serial -TCP/IP conversion adapter for PowerLite 61p / 81p
4.01	October 18, 2004	Supported projectors that are configured on a large-scale network.
4.02	August 29, 2005	Addition of timer function and auto search function by specifying IP addresses. Improvement of communication logs size.
4.10	May 8, 2006	Addition of new functions, Improvement of usability, and Corresponding to PowerLite 6100i.
4.20	May 15, 2007	EMP NS Connection V2.20 supports Windows Vista (Home Basic / Home Premium / Ultimate / Business / Enterprise).
4.21	September 26, 2007	Supported 25 languages
4.22	March 31, 2008	Supported 27 languages Addition of new Error Information Supported Video (BNC)
4.30	April 3, 2009	Supported 34 languages Additional Input Sources Displays projector's serial number in Menu settings

EPSON PRODUCT SUPPORT BULLETIN

Date:	12/18/2008	Originator:	DS
PSB #:	PSB.2009.01.006	Authorization:	<i>Kps</i>
Reference:	TI 08-22e Rev. A/B	Total Pages:	7
Product(s):	PowerLite 735c / 737c / 745c / 755c / 765c / 835p 1705c / 1715c / 1815p / 1825p / 7850p / 8300i with EasyMP.net option Pro G5150 / Pro G5350 / 1725 / 1735W		
Subject:	Release of Check Tool for Network Projectors V1.00 (for Windows)		

This bulletin was created to inform you about the release of Epson Check Tool software for Network Projectors version 1.00.

Description of Change:

First release of the Check Tool for Network Projectors for Windows

Reason:

The Check Tool for Network Projectors makes it possible to easily check whether EPSON Quick Wireless Connection and EMP NS Connection's Quick Connection mode can operate on the users' Windows PC properly. The Check Tool for Network Projector can also be used as a reference check before the purchase of the projector or as a troubleshooting Tool.

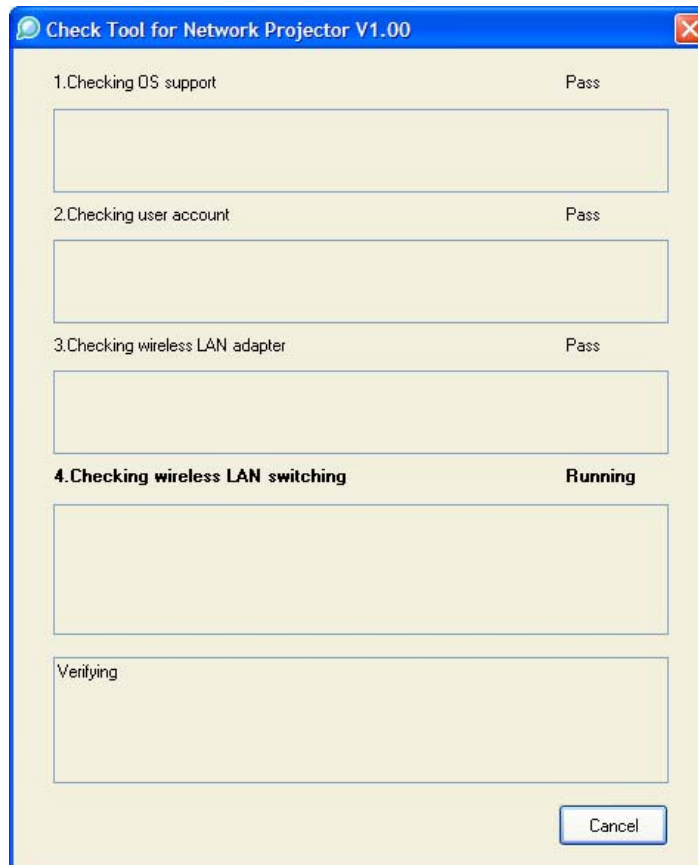
1) Function of the Application

Application name	Check Tool for Network Projector V1.00
Notes	<p>The Check Tool checks automatically whether EMP Quick Wireless Connection and EMP NS Connection's Quick Connection mode can operate properly on the user's Windows PC in terms of the following four points:</p> <ol style="list-style-type: none">1. Checks OS support.<ul style="list-style-type: none">• Checks whether the OS is supported by EMP Quick Wireless Connection / EMP NS Connection.2. Checks user account<ul style="list-style-type: none">• Checks user's account for administrator privileges to install EMP Quick Wireless Connection / EMP NS Connection.3. Checks the wireless LAN adapter<ul style="list-style-type: none">• Checks whether the wireless LAN adapter and driver are installed on the PC.• Checks whether the wireless LAN is active.

Notes

4. Checks wireless LAN switching
 - Checks whether wireless LAN adapter is turned ON.
 - Checks whether EMP Quick Wireless Connection and EMP NS Connection's Quick Connection mode can set the SSID on the user's PC when trying to connect to a projector using EMP Quick Wireless Connection and EMP NS Connection's Quick Connection Mode.

The Check Tool checks for communication conflict and whether it can actually stop the utilities when both utilities--EMP Quick Wireless Connection V1.00 and EMP NS Connection-- are both installed on the users PC.



Notes	<p>Output of the log file:</p> <ul style="list-style-type: none"> • The Check Tool records the result in a text file (log file). Usually, the log file is saved under the name of CheckInfoDATE.log in the directory where “EB_CHT.exe” is stored
Limitations	<ul style="list-style-type: none"> • When the Check Tool is checking the user’s PC, the user’s PC drops off network. • The Check Tool does not check whether the firewall of manufacturers of security software other than Windows may be blocking EPSON Quick Wireless Connection/EMP NS Connection.

2) Operating Environment

Check Tool for Network Projector V1.00

OS	Windows 2000 SP4 Rollup1 / XP Home Edition/ XP Professional(32bit) non-SP,SP1,SP2,SP3 /Vista SP1 Home Basic/Home Premium/Ultimate/Business/Enterprise(32bit) non-SP,SP1
CPU	Windows: Mobile Pentium III 1.2GHz at least (Pentium M1.6GHz at least recommended)
Memory	256MB at least (Recommendation: 512MB at least)
Disk space	20MB at least
Display	Resolution: At least VGA(640 x 480) but no more than UXGA (1600 x 1200) At least 16 bit color

- 3) **Location of download file: Check Tool for Network Projector V1.00**
Download `epson12794.exe` from the Epson website (www.epson.com).
This is a self-extracting file; please follow the screen prompts to install the Check Tool software.

- 4) Double-click the `[EB_CHT.exe]` icon

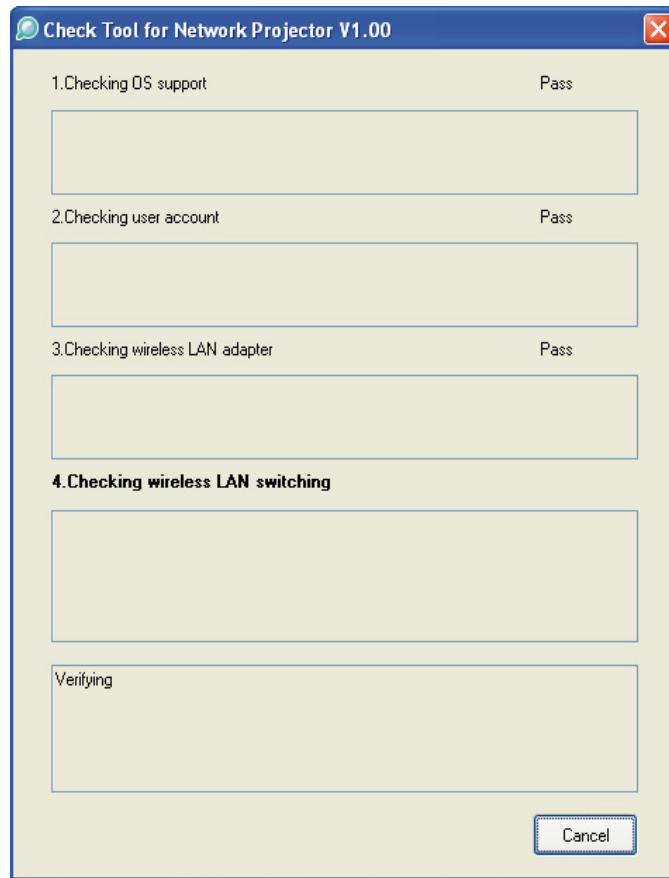
- 5) Read the contents of the `[SOFTWARE LICENSE AGREEMENT]`, and click the `[Agree]` button.

- 6) A dialog indicating the program is starting opens with the following message:

**This tool cuts off the network connection temporarily.
Click the `[Start]` button to begin verification.**

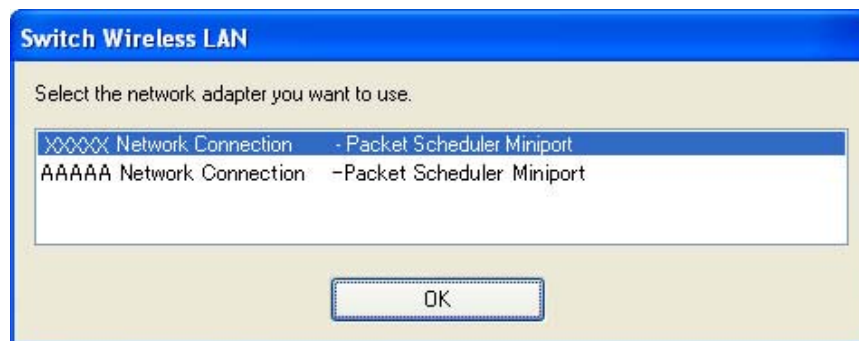


- 7) The Check tool dialog is displayed. It takes a few minutes for the results of the verification are displayed



- 8) When two or more wireless LAN adapters are available on your computer, the adapter selection dialog opens.

Select the wireless LAN adapter and press the OK button to continue.



9) When the verification is complete, the result is displayed on the bottom of the dialog.

The result is stored in the same folder as the check tool.

File Name: CheckInfo<****>.log

**** indicates the created date and time.

[Exhibit 1]

Wireless LAN client list that NSC and Quick Wireless Connection stop their service process

	Manufacturer Name	Adapter Name	Wireless LAN Utility Name
Supported by NSC V2.30	D-Link	Air Plus XTREMEG DWL-G650	D-Link AirPlus XtremeG Utility (CD)
	NETGEAR	WN511T	Smart Wireless Utility Ver.1.1.5.9(CD)
	BUFFALO	Buffalo all products	Client Manager 3 Ver.1.2.10(Web)
	IBM	ThinkPad products	Access Connection(Web) *1 Ver.4 or later
	IBM	ThinkPad products	Access Connection(Web) *1 Ver.3.71
	Logitec	Logitec LAN-WAG/U2 Wireless LAN Adapter	Logitec Wireless LAN Client Utility
	Linksys	Wireless-G Notebook Adapter v.5.0	WPC54G-JP setting utility
	NETGEAR	WG511AJP	NETGEAR WG511A Smart Wizard Ver3.2.3.306
	NETGEAR	WGM511	NETGEAR SMART WIZARD - Wireless Assistant WGM511 Ver 1.0.0.7
	NETGEAR	WPNT511	NETGEAR WPNT511 SMART WIZARD Ver1.1.3.0

	Linksys	WPC300N	Wireless-N Notebook Adapter Wireless Network Monitor v1.05
	Linksys	WPC54G	Wireless-G Notebook Adapter Wireless Network Monitor Ver 3.1
	Manufacturer Name	Adapter Name	Wireless LAN Utility Name
	Linksys	WPC54GX4	Wireless-G Notebook Adapter with SRX400 Setup Wizard V1.1
	Linksys	WUSB54GP	Wireless-G Portable USB Adapter WLAN Monitor v1.05
	Linksys	WUSB54G	Wireless-G USB Adapter with Wi-Fi Finder
	NETGEAR	WG511 v2	
	Linksys	WPC54GX	Wireless-G Notebook Adapter With SRX Wireless Network Monitor v. 1.2
Supported by NSC V2.40	Linksys	WUSB54GSC	Compact Wireless-G USB Adapter Wireless Network Monitor v1.05
Supported by NSC V2.50 & Quick Wireless Connection V1.00	Atheros		Atheros Client Utility

*1: Because Access Connection service stops, power display of Power Manager becomes invalid.

Software Upgrade History Quick Wireless

Version	Release date	Remark
V1.00	August. 12, 2008	V1.00 release

EPSON PRODUCT SUPPORT BULLETIN

Date:	09/17/2008	Originator:	VS
PSB #:	PSB.2009.01.003	Authorization:	Kps
Reference:	TI 08-29e Rev. A	Total Pages:	8
Product(s):	PowerLite 1735W, 735c, 737c, 745c, 755c, 765c, 835p, 1705c, 1715c, 1725, 1815c, 1825, 7850p, 7950p, 8300i with EasyMP.Net optional module, Pro G5150 and Pro G5350 projectors		
Subject:	EMP SlideMaker2 updated Version 1.30 – provides scenario support for WXGA (1280 x 800) resolution		

This bulletin was created to inform users about a software update for the EMP SlideMaker2 to Version 1.30.

Description of Change:

Updated software release for creating scenarios in WXGA (16:10) format.

Reason:

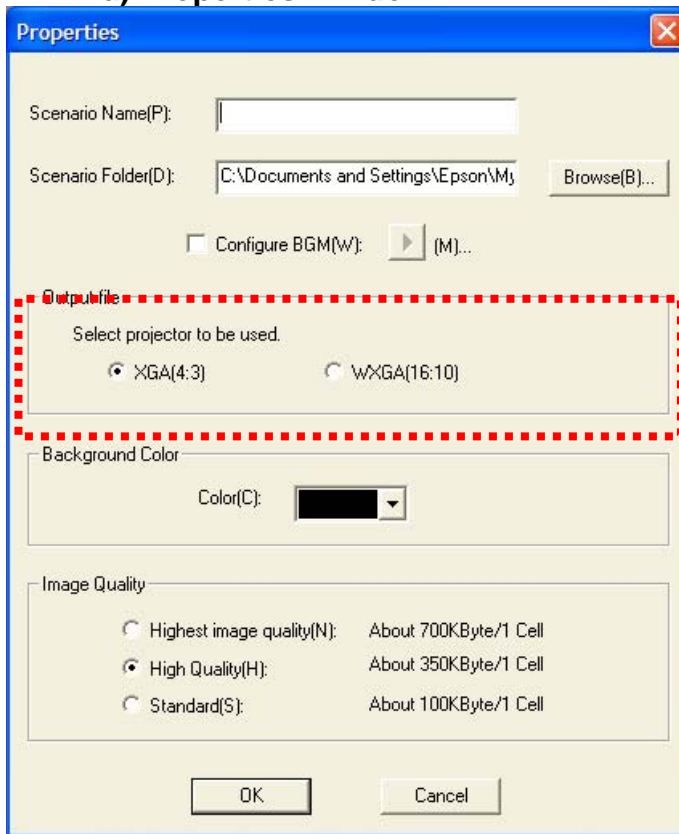
- The updated version of EMP SlideMaker2 provides support for creating scenarios in XGA (1024 x 768) resolution and WXGA (1280 x 800) resolution.
- It also provides the ability to select scenarios in XGA (4:3) or WXGA (16:10) format, depending on the projector model used for the presentation.

Limitations:

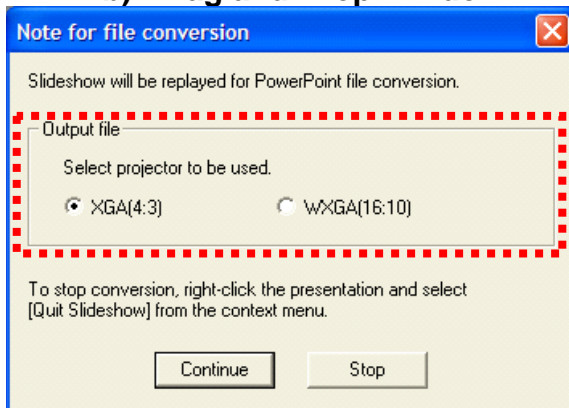
- When creating a 16:10 scenario, the JPEG image must be in a 16:10 format.
- A 16:10 converted scenario can only be displayed with a WXGA (1280 x 800) projector.
- A 4:3 converted scenario can be displayed with a XGA or WXGA supported projector.
- When adding a PowerPoint slide from a thumbnail window to EMP SlideMaker2 with Microsoft Office 2007, the scenario image file may deteriorate due to an issue with Microsoft Office 2007 SP1.

1) Selecting Aspect Ratio for the Projector being used:

a) Properties Window



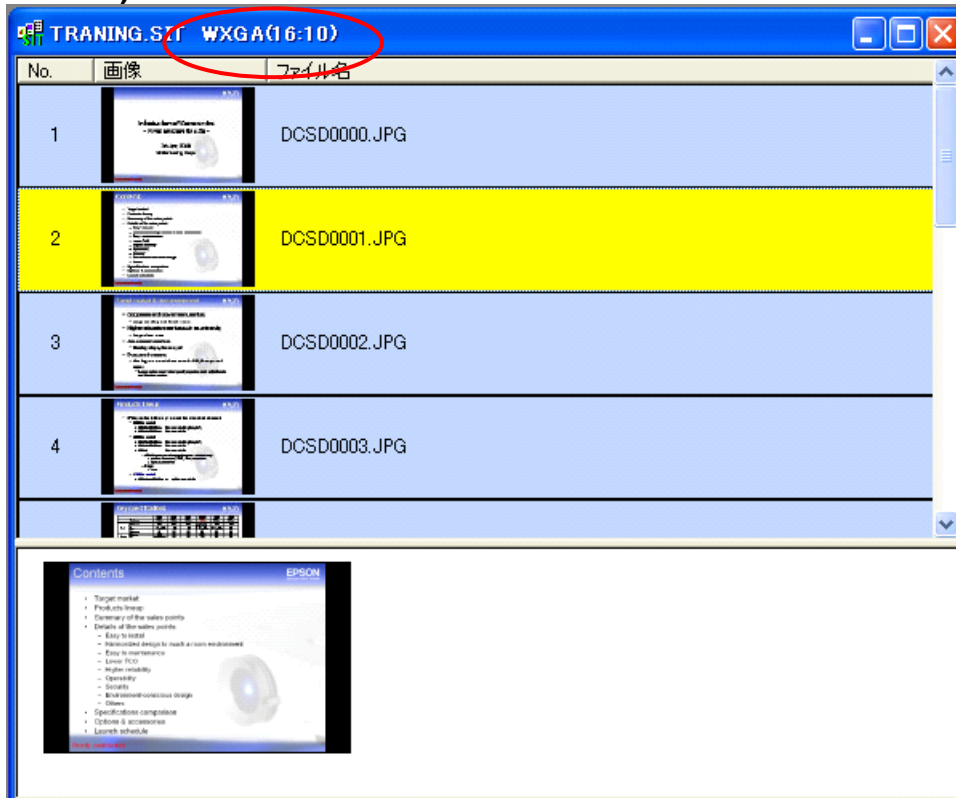
b) Drag and Drop Window



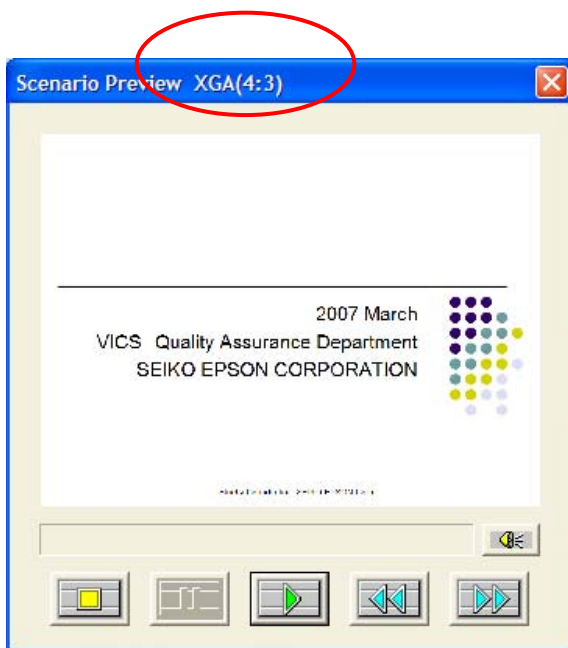
2) How to Verify the Aspect Ratio of the Scenario:

The resolution of the scenario is displayed in the window title of the Scenario Window and Scenario Preview as shown below:

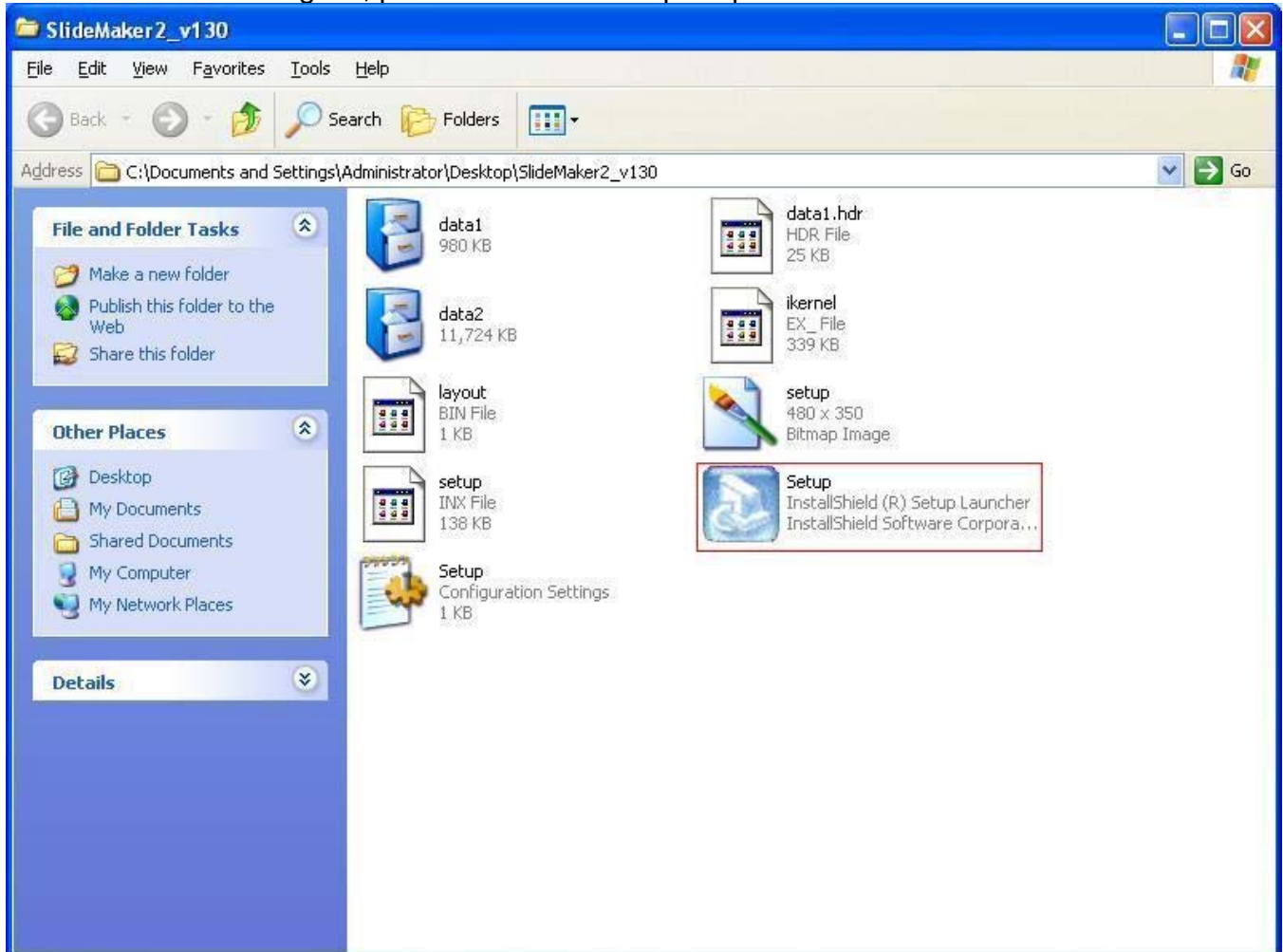
a) Scenario Window



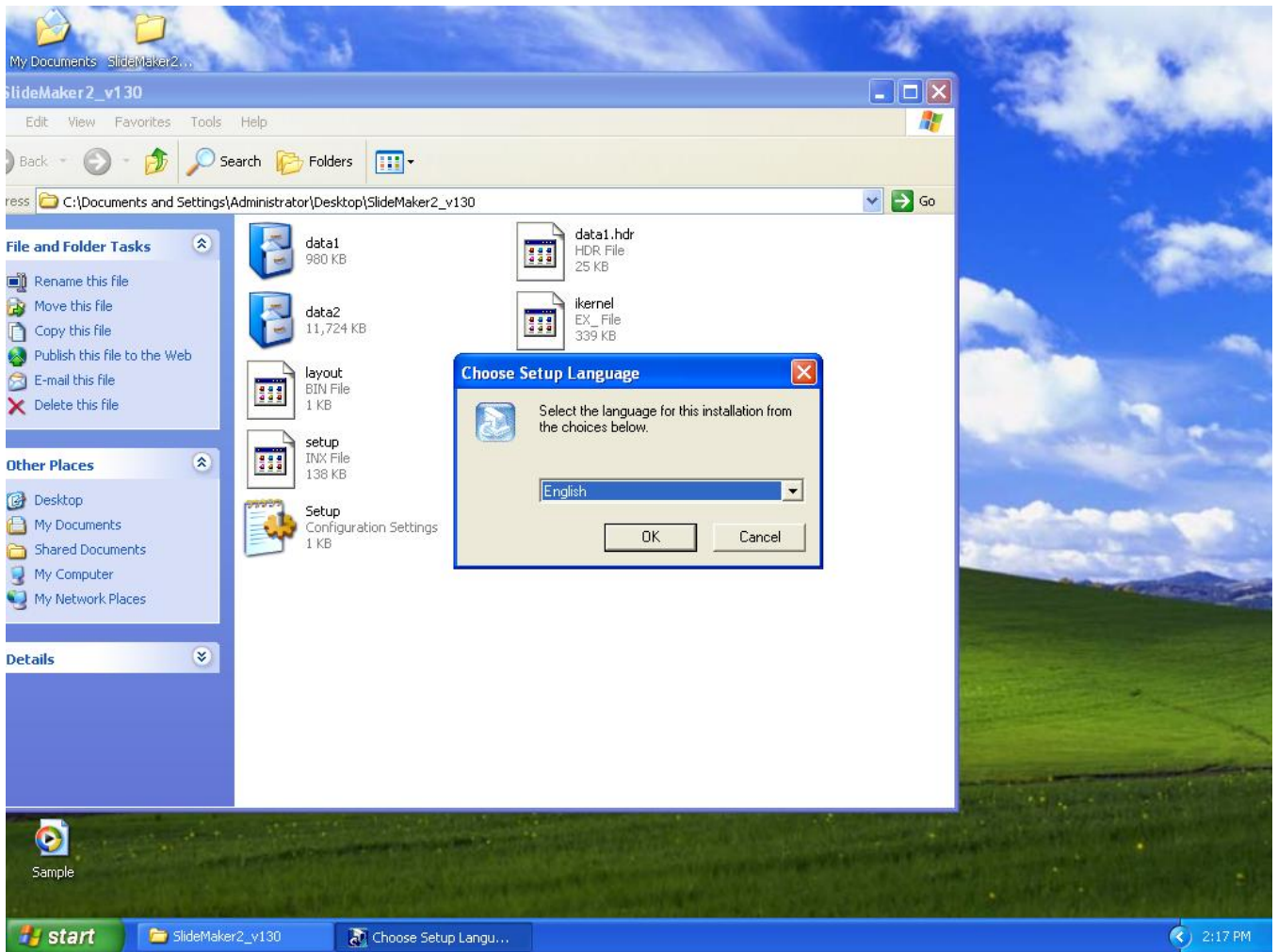
b) Scenario Preview



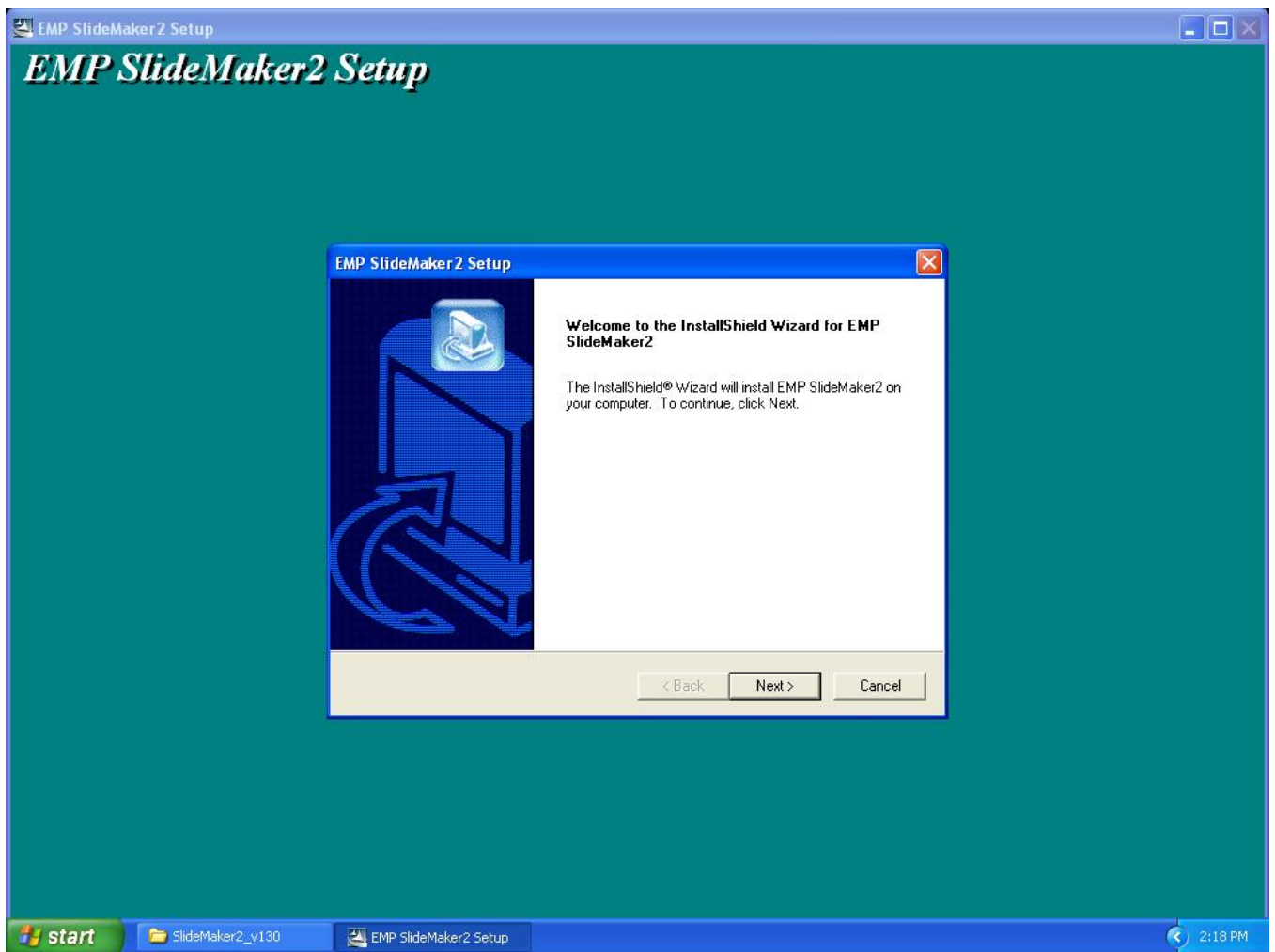
3) Location of download file: EMP SlideMaker2 updated Version 1.30
Download epson12812.exe from the Epson website (www.epson.com)
This is a self extracting file, please follow screen prompts.



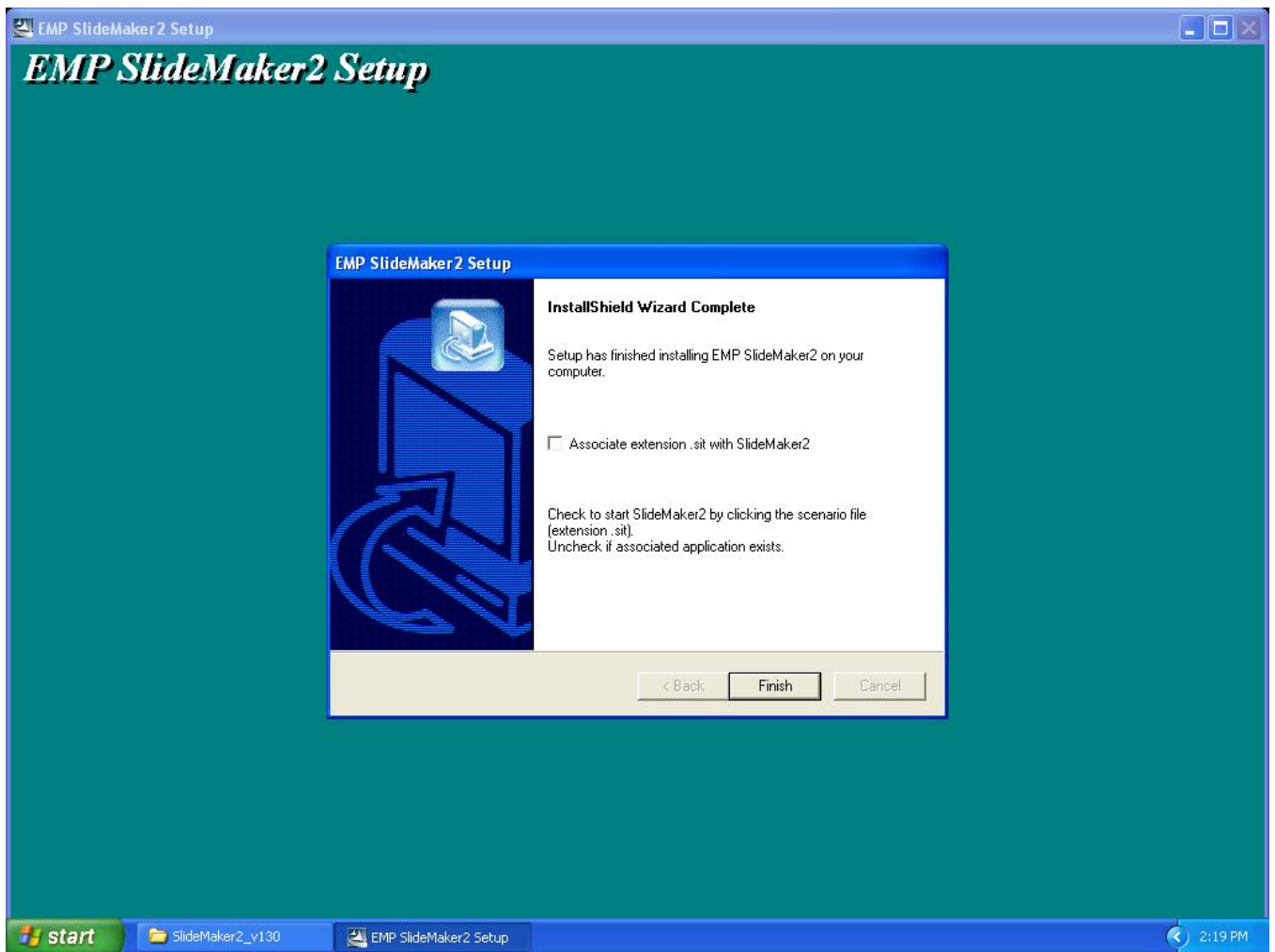
After "Clicking" on the "Setup.exe" file, your will be prompted to:



Select you language.



Click "Next" at this screen.



Click "Finish" to complete the installation.

4) **How to User the software:** Please refer to the original documentation that came with your Projector.

5) **Operating Environment:**

OS	Windows 98/98SE/Me/ 2000 Professional/XP Home Edition SP4 / XP SP1,SP2,SP3 Professional(32bit) / Vista non-SP,SP1 Home Basic/Home Premium/Ultimate /Business/Enterprise(32bit)
Office	Office2000、 OfficeXP、 Office2003、 Office2007
CPU	At least Celeron 300MHz (Recommended: Celeron 400MHz or above)
Memory	At least 64MB (Recommended: 128MB or above)
Disk space	At least 50MB
Display	At least SVGA (800×600) (Recommended: XGA(1024x768))

EPSON PRODUCT SUPPORT BULLETIN

Date:	09/05/2008	Originator:	JAM
PSB #:	PSB.2008.11.001	Authorization:	Kps
Reference:	TI 08-17e Rev. A	Total Pages:	8
Product(s):	PowerLite 1725 and 1735W projectors		
Subject:	Release of Quick Wireless V1.00 / Quick Wireless Maintenance Tool V1.00		

This bulletin was created to inform you about the release of Quick Wireless V1.00 / Quick Wireless Maintenance Tool V1.00

1) Function of the application “Quick Wireless” / Quick Wireless Maintenance Tool

The new application “Quick Wireless” makes it possible to write projector information on the Quick Wireless USB key and project images by simply inserting the USB key into a PC. The “Quick Wireless” is automatically installed into the PC by connecting the Quick Wireless USB key to the PC the first time. Quick Wireless Maintenance Tool has versions that correspond to each version of the application “Quick Wireless”. Please use the correct version of the Quick Wireless Maintenance Tool to restore data in the following cases or upgrade the “Quick Wireless” stored in the Quick Wireless USB Key.

- Data on the Quick Wireless USB key was deleted by mistake.
- File on the Quick Wireless USB key is damaged

Application name	Quick Wireless V1.00
Notes	To avoid conflicts between the Quick Wireless and other makers' utilities, when the Quick Wireless starts, this version stops services of the other utilities listed in the attached file (Exhibit 1). When quitting Quick Wireless, the other utilities resume their services.
Limitations	To install this application, administrator's authorization is necessary. In the network environment using IEEE 802.11 b/g standards, wireless connection might drop under the following conditions. <ul style="list-style-type: none">• Due to specification of wireless controllers, some wireless controllers don't send beacon periodically. Even if a projector is connected to a PC via wireless, if the projector doesn't detect beacon for 802.11b signal for certain period (30 – 60 seconds) from PC, the projector judges that there isn't any PC using the 802.11b signal in the network and switches to communication with 802.11g (default) signal. On the other hand the PC still tries to communicate with 802.11b. As a result, wireless connection between the

	<p>projector and the PC drops.</p> <p><u>Solutions to this problem:</u></p> <ul style="list-style-type: none"> • Establish wireless communication between PC and projector via 802.11a signal. • Or use devices where normal operation with the Quick Wireless is confirmed. For details, please refer to the attached file (Exhibit 2). <p>As for the troubleshooting of the Quick Wireless, please refer to the attached troubleshooting check list.</p> <ul style="list-style-type: none"> • When trying to connect the Quick Wireless USB key to PC while running NS connection or USB display, an error message is displayed. However, the model name and contents in the message are not appropriate. • Also when trying to start NS connection or USB display while keeping the Quick Wireless USB key connected to PC, the same symptom occurs.
--	---

2) Operating Environment:

Quick Wireless Connection V1.00/ Quick Wireless Connection Maintenance Tool V1.00

OS	Windows 2000 SP4 Rollup1 Windows XP Home Edition / XP Professional (32bit) non-SP,SP1,SP2,SP3 Windows Vista SP1 Home Basic/Home Premium/Ultimate/Business/Enterprise (32bit) non-SP,SP1
CPU	Windows: Mobile Pentium III 1.2GHz at least (Pentium M1.6GHz at least recommended)
Memory	256MB at least (recommendation: 512MB at least)
Disk space	20MB at least
Display	Resolution: at least VGA (640 x 480) but no more than UXGA (1600 x 1200) At least 16 bit color

3) Location to download file

Download epson12813.exe from the Epson website (www.epson.com).

- Refer to the section “Update Method of Quick Wireless Connection Tool” for installation instructions below in this document.

[Exhibit 1] Wireless LAN client list that NSC V2.30 and V2.40 stops their service process

	Manufacturer Name	Adapter Name	Wireless LAN Utility Name
Supported by V2.30	D-Link	Air Plus XTREMEG DWL-G650	D-Link AirPlus XtremeG Utility (CD)
	NETGEAR	WN511T	Smart Wireless Utility Ver.1.1.5.9(CD)
	BUFFALO	Buffalo all products	Client Manager 3 Ver.1.2.10(Web)
	IBM	ThinkPad products	Access Connection(Web) *1 Ver.4 or later
	IBM	ThinkPad products	Access Connection(Web) *1 Ver.3.71
	Logitec	Logitec LAN-WAG/U2 Wireless LAN Adapter	Logitec Wireless LAN Client Utility
	Linksys	Wireless-G Notebook Adapter v.5.0	WPC54G-JP setting utility
	NETGEAR	WG511AJP	NETGEAR WG511A Smart Wizard Ver3.2.3.306
	NETGEAR	WGM511	NETGEAR SMART WIZARD -Wireless Assistant WGM511 Ver. 1.0.0.7
	NETGEAR	WPNT511	NETGEAR WPNT511 SMART WIZARD Ver1.1.3.0
	Linksys	WPC300N	Wireless-N Notebook Adapter Wireless Network Monitor v1.05
	Linksys	WPC54G	Wireless-G Notebook Adapter Wireless Network Monitor Ver. 3.1
	Linksys	WPC54GX4	Wireless-G Notebook Adapter with SRX400 Setup Wizard V1.1
	Linksys	WUSB54GP	Wireless-G Portable USB Adapter WLAN Monitor v1.05
Linksys	WUSBF54G	Wireless-G USB Adapter with Wi-Fi Finder	

	NETGEAR	WG511 v2	
	Linksys	WPC54GX	Wireless-G Notebook Adapter With SRX Wireless Network Monitor v. 1.2
Supported by V2.40	Linksys	WUSB54GSC	Compact Wireless-G USB Adapter Wireless Network Monitor v1.05
Supported by V2.50&Quick Wireless Connection V1.00	Atheros		Atheros Client Utility

*1: Because Access Connection service stops, power display of Power Manager becomes invalid.

[Exhibit 2] Compatibility test results between Quick Wireless and devices.

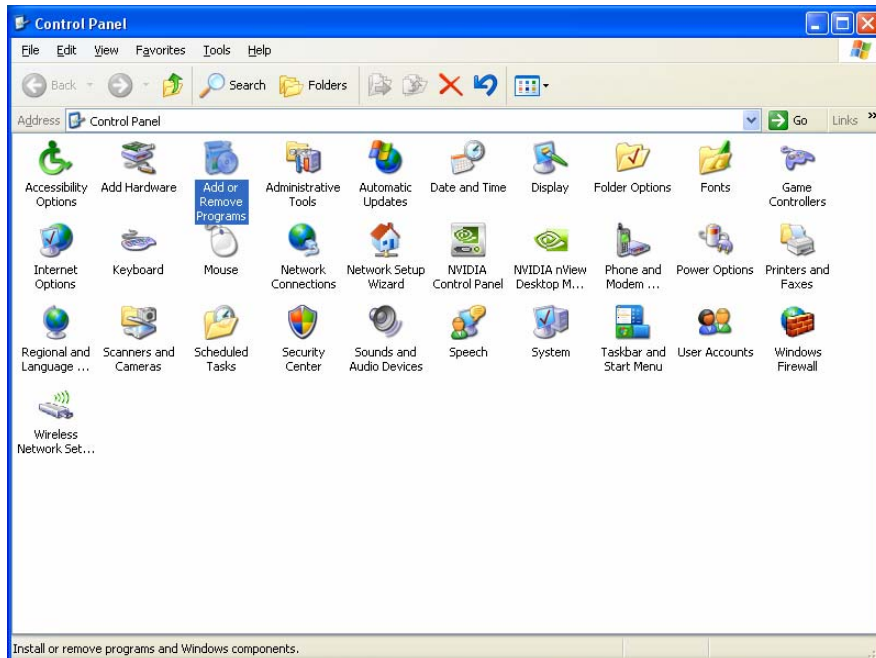
Device	Manufacturer	Model Name/Type name/Specification	Judge
Wireless LAN is built in PC	DELL	LATITUDE D830 (802.11a/b/g)	OK
	Fujitsu	FMV-H8240 (802.11a/b/g)	OK
	Fujitsu	FMV-P8210 (802.11a/g)	OK
	NEC	VERSA PRO VY10A/C-3 (802.11a/b/g)	OK
	Lenovo	THINK PAD X61 (802.11a/b/g)	OK
Card Bus	Linksys	WPC600N (802.11a/b/g/n)	OK
	Buffalo	WLI-CB-G144N (802.11g/b/n)	OK
	NEC	PA-WL/54AG (802.11a/b/g/n)	OK
	Cisco	AIR-CB21AG-P-K9 (802.11a/b/g)	NG*1
	D-link	DWA-645 (802.11g/b/n)	OK
USB	Planex	GW-US300Mini-X (802.11b/g/n)	OK
	NETGEAR	WNDA3100 (802.11a/b/g/n)	OK

- At the ad-hoc connection, search problem might occur. The latest version of Cisco Aironet Desktop Utility can avoid the search problem by selecting "Third-Party Tool" of "Select Client Software" in the option menu.

Update Method of Quick Wireless Connection Tool

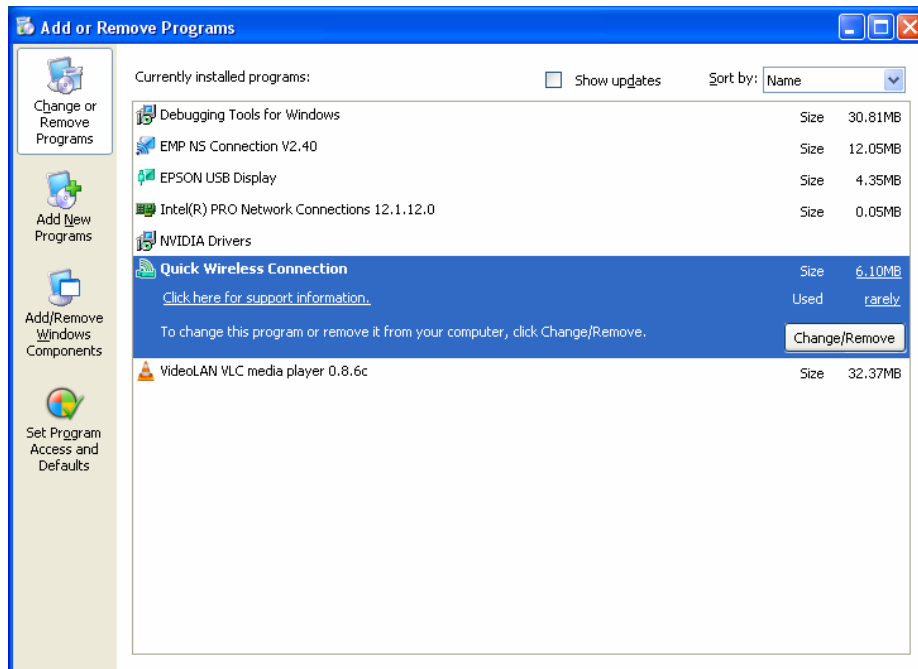
1) Remove the existing Quick Wireless Connection Tool.

- If you have installed Quick Wireless Connection onto the PC, it is necessary to remove the existing Quick Wireless Connection tool.
- If you haven't installed the tool, skip to step 3.
- Open Control Panel, and [Select Add and Remove Programs] icon.



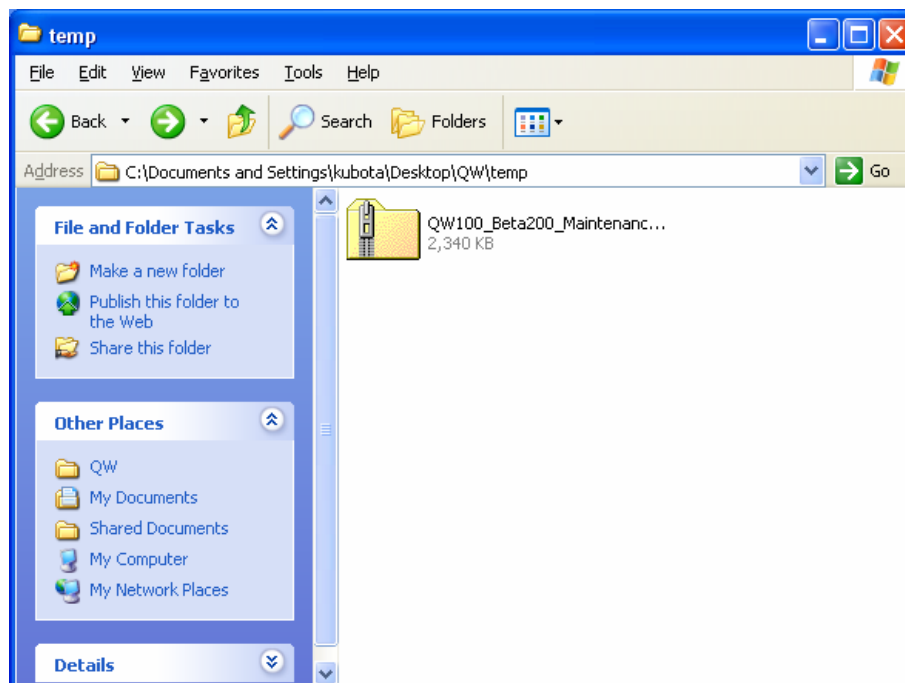
2) Select “Quick Wireless Connection” and click [Change/Remove] button.

- “Quick Wireless Connection” utility will be removed.

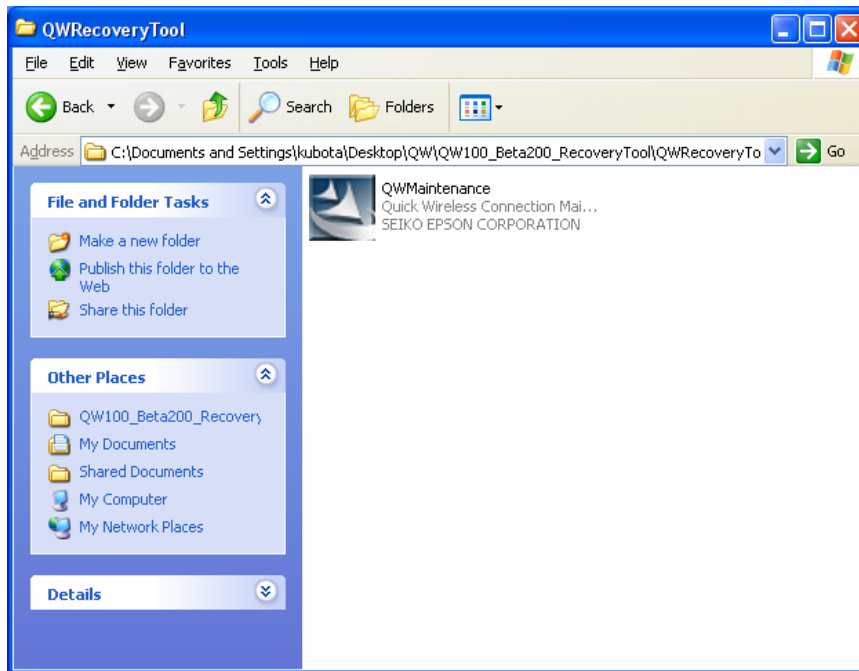


3) Copy new Quick Wireless Connection tool to USB key device.

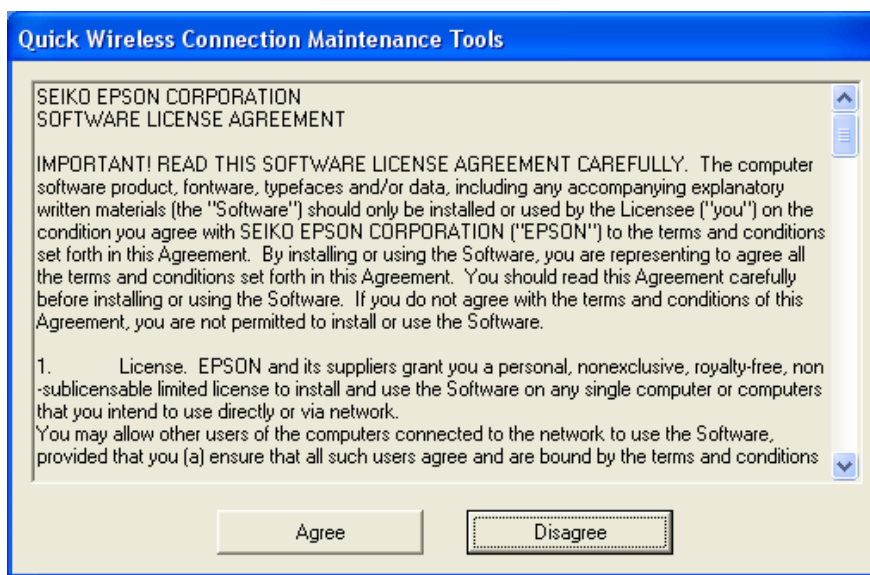
- Prepare Maintenance tool for extraction
- Unpack zip file



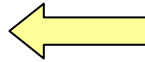
(4) Setup the Maintenance tool



(5) [Agree] to the Software License Agreement.

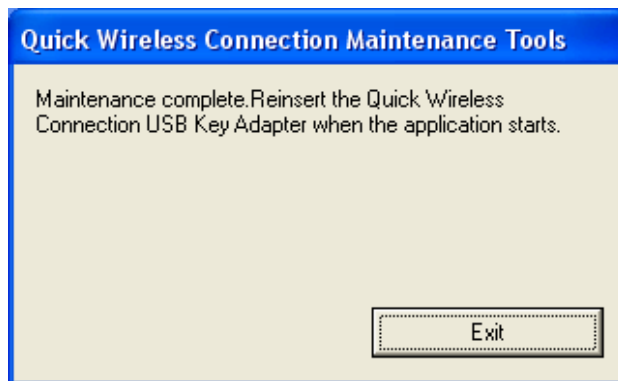


(6) Insert USB Key into host PC, and the Copy process will start.

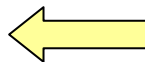


USB key included
old Quick Wireless
Connection

(7) End of operation. When dialog below is displayed, copy process of USB key is finished.



(8) Install Quick Wireless Connection. To install new Quick Wireless Connection, insert the USB Key into PC, and the Installation will start automatically.



USB key includes
new Quick Wireless
Connection Tool

(9) When installation is finished, you can use new Quick Wireless session.

EPSON Product Support Bulletin

Date:	11/11/2008	Originator:	JAM
PSB #:	PSB.2008.11.002	Authorization:	Kas
Reference:	TI08-42e Rev.A	Total Pages:	6
Product(s):	PowerLite 1725 and 1735W Projectors		
Subject:	Evaluation Results of Compatibility Test for Quick Wireless Connection		

This bulletin was created to provide information about the test criteria and compatibility results conducted on the **Quick Wireless Connection (QWC)** function.

Projector models and firmware versions used in the evaluation:

<u>Models</u>	<u>PowerLite 1725 and 1735W Projectors</u>
Firmware Types	Version
PW firmware version	1.00
IM-X firmware version	1.10
Quick Wireless Connection	1.00

Test Conditions:

- (1) Establish wireless communication between PC and an access point.
- (2) Insert the USB key into the PC to start the **QWC** function, while connecting to the access point (Infrastructure mode).

Connection Confirmation:

- Confirm that the **QWC** function can find and connect to the projectors using 802.11b/g signal. Confirm that **QWC** works with **802.11b/g signal**.
- Confirm that the **QWC** function can find and connect to the projectors using 802.11a signal. Confirm that **QWC** works with **802.11a signal**.
- Confirm that the **QWC** function will not make the Operating System unstable, when the operation is changed to sleep mode (standby mode) and then restarted from sleep mode (standby mode).

Compatibility Matrix: Notebook PC with built-in wireless LAN Adapter

Manufacturer	Model	Wireless Adapter	Wireless Spec	Operating System	Results
SONY	VGN-G1KBN	Marvell Yukon 88E8055 PCI-E Gigabit Ethernet Controller	802.11a 802.11b 802.11g	Vista Business	Pass
NEC	PC-LL770CD	ALPS ALPJ1-7 Mini PCI	802.11b 802.11g	XP Home SP2	Pass
NEC	LaVie J LJ500/3E	AMBIT Microsystems Corp. T60H424 (Intersil ISL3874AIK)	802.11b	XP Pro SP1	Pass
Toshiba	Dynabook TX/68D	AR5006EG 802.11b/g Wireless PCI Express Adapter	802.11b 802.11g	Vista Home Premium	Fail
Sharp	Mebius CW PC-CW50V	Atheros AR5006EG	802.11b 802.11g	Vista Home Premium	Pass
SOTEC	WinBook WH5514P	Atheros Ar5006EXS	802.11a 802.11b 802.11g	Vista Home Premium	Pass
HITACHI	Prius Note PN34K5T	Atheros AR5006FG Wireless Network Adapter	802.11b 802.11g	Vista Home Basic	Pass
SONY	PCG-TR1/B	Atheros Communications 802.11a/b/g AR5212 MINI PCI Wireless network adapter	802.11a 802.11b	XP Home SP1	Pass
HP	HP Pavilion dv2705/CT	Broadcom BCM4310 USB Controller	802.11a 802.11b 802.11g	Vista Home Basic	Fail
HP	dv2605/CT	Broadcom BCM4312	802.11a 802.11b 802.11g 802.11n (draft)	Vista Home Premium	Pass
HP	Compaq nx4800/CT	Broadcom BCM94306MPLNA (BROADCOM BCM4306KFB)	802.11b 802.11g	XP Pro SP2	Pass
NEC	LaVie J PC-LJ750LH	Intel 4965ABG	802.11a 802.11b 802.11g 802.11n (draft)	Vista Home Premium	Pass
SONY	VGN-S53B/S	Intel PRO / Wireless 2200BG	802.11b 802.11g	XP Home SP2	Pass
Toshiba	DynaBook V9/W14LDEW	Intel PRO/ Wireless LAN 2100 3B Mini PCI Adapter	802.11b	XP Home SP1	Pass

Manufacturer	Model	Wireless Adapter	Wireless Spec	Operating System	Results
FUJITSU	FMVNX70L/W	Intel PRO/Wireless 2915ABG	802.11a 802.11b 802.11g	XP Home SP2	Fail
Panasonic	CF-T7BW5AJR	INTEL PRO/Wireless 4965 AG or AGN Network	802.11a 802.11b 802.11g	Vista Business	Pass
SONY	PCG-TR2/B	LAN-Express AS IEEE 802.11a/g mini PCI Adapter	802.11a 802.11b 802.11g	XP Home SP1	Pass
SONY	PCG-R505VM/K	LAN-Express IEEE 802.11 PCI	802.11b	W2k SP3	Pass
Sharp	PC-MM50G	LAN-Express PSM MiniPCI (Intersil)	802.11b 802.11g	XP Home SP2	Pass
SONY	PCG-SRX3S/BD	ORiNOCO Wireless LAN Mini PCI	802.11b	XP Home	Pass
Gateway	MT3303j	Realtek RTL8185 IEEE 802.11ab/g	802.11g	Vista Home Premium	Fail
Gateway	Gateway T1409j	Realtek RTL8187B	802.11g	Vista Home Premium	Pass
SONY	PCG-R505X/PD	TI PCI-1410	802.11b	XP PRO	Pass
NEC	LaVie L PC-LL570/HG	UGJZ1-9 11a/b/g MiniPCI Network Adapter	802.11a 802.11b 802.11g	Vista Home Premium	Pass
SONY	VGN-U70P	Sony 802.11g Wireless LAN Module	802.11b 802.11g	XP Pro SP1	Pass
SONY	PCG-V505S/PB	LAN-Express IEEE 802.11 PCI Adapter	802.11b 802.11g	XP Pro SP1	Pass
Toshiba	Satellite A25-S279	Atheros AR5001X+ Wireless Network Adapter	802.11g	XP Home SP1	Pass
Sharp	Mebius PC-AE50M	Atheros AR5005G	802.11b 802.11g	XP Home SP2	Pass
FUJITSU	FMV-BIBLO MG50S	Atheros AR5006EX Wireless	802.11a 802.11b 802.11g	XP Home SP2	Pass
NEC	LaVie L PC-LL570/GD	Atheros AR5006X Wireless	802.11a 802.11b 802.11g	XP Home SP2	Pass
Toshiba	Dynabook TX/66E	Atheros AR5007EG Wireless Network Adapter	802.11b 802.11g	Vista Home Premium	Fail
Sharp	Mebius Note PC-WE40S	Athros AR5006EG	802.11b 802.11g	Vista Home Basic	Pass
COMPAQ	Presario V6000Z	Broadcom 4321AG 802.11a/b/g/draft-n WiFi	802.11b 802.11g	Vista Home Basic	Pass

Manufacturer	Model	Wireless Adapter	Wireless Spec	Operating System	Results
Acer	Ferrari 1005WTMi	Broadcom 802.11n Network Adapter	802.11a 802.11b 802.11g	XP Pro SP2	Pass
HP Compaq	Pavilion zv5000 nx6125	Broadcom BCM4301 802.11b Broadcom 802.11b/g WLAN	802.11b	XP Home SP1a SP2	Pass
HITACHI	PriusGear 150H	Broadcom BCM4306 802.11b/g Wireless Network Adapter	802.11b 802.11g	XP Home SP1a	Pass
HP	Pavilion dv6225us	Broadcom BCM4311 802.11b/g WLAN	802.11b 802.11g	Vista Home Premium	Pass
Acer	Ferrari 4005 WLMi	Broadcom BCM4318 802.11g Network Adapter	802.11b 802.11g	XP Home SP2	Pass
COMPAQ	Evo N620c	Compaq WLAN MultiPort W200	802.11b	XP Pro SP1	Pass
Dell	Inspiron E1705	Dell Wireless 1390 WLAN Mini-Card	802.11g	Vista Home Premium	Pass
Sharp	Actius UM32W	Haris/Intersil PRISM 2.5 Wireless 802.11b	802.11b	XP Pro SP1	Fail
FUJITSU	FMV-BIBLO NF40U/V	Inetl PRO/Wireless 3945ABG	802.11a 802.11b 802.11g	Vista Home Basic	Pass
Panasonic	Let's note CF-T5MW4AJR	Intel PRO/Wireless 3945ABG	802.11a 802.11b 802.11g	Vista Business	Pass
Dell	Inspiron 600M	Intel PRO/Wireless LAN 2100 3A Mini PCI	802.11a 802.11b 802.11g	XP Home SP1	Pass
SONY	VGN-SZ750N/C	Intel Wireless WiFi Link 4965AGN	802.11a 802.11b 802.11g 802.11n (draft)	Vista Business SP1	Fail
HP	Pavilion dv2500t	Intel Wireless WiFi Link 4965AGN	802.11a 802.11b 802.11g 802.11n (draft)	Vista Ultimate x64	Fail
FUJITSU	FMV-BIBLO NB16B/M	Intersil PRISM Wireless LAN PCI Card	802.11b	XP HOME	Pass

Manufacturer	Model	Wireless Adapter	Wireless Spec	Operating System	Results
Gateway	M305CRV	Realtek RTL8180 Wireless LAN (Mini-)PCI NIC	802.11b	XP Home SP1a	Pass
Gateway	MT6452	Realtek RTL8187 Wireless 802.11g 54Mbps USB2.0	802.11g	Vista Home Premium	Pass
NEC	LS500AD	UGJZ1 11a/b/g Mini PCI	802.11a 802.11b 802.11g	XP Pro SP2	Fail

External Wireless LAN Adapter Manufacturer	Model	Wireless Adapter Type	Wireless Spec	Results
Planex	GW-CF11H	Compact Flash	802.11b 802.11g	Pass
Corega	CG-WLPCCB11	PCMCIA	802.11b 802.11g	Fail
Elecom	LD-WL11/PCCS	PCMCIA	802.11b 802.11g	Pass
I-O DATA	WN-B11/PCMH	PCMCIA	802.11b 802.11g	Pass
PCi	GW-NS11H	PCMCIA	802.11b 802.11g	Pass
D-Link	DWA-643	Express Card	802.11b 802.11g	Pass
3COM Corp.	3CRWE737A	PCMCIA	802.11b 802.11g	Pass
Agere	ORiNOCO Gold	PCMCIA	802.11b 802.11g	Pass
ASUS	WL-100g	PCMCIA	802.11b 802.11g	Pass
Belkin	F5D8010	PCMCIA	802.11b 802.11g	Pass
Buffalo	WLI-PCM-L11G	PCMCIA	802.11b 802.11g	Pass
Cisco	CISCO AIR-PCM350 Series (AIR-PCM352)	PCMCIA	802.11b 802.11g	Fail
Cisco	AIR-CB21AG-J-K9	PCMCIA	802.11b 802.11g 802.11a	Fail
D-Link	DWL-G650	PCMCIA	802.11b 802.11g	Fail

External Wireless LAN Adapter Manufacturer	Model	Wireless Adapter Type	Wireless Spec	Results
Intel	WPC2011	PCMCIA	802.11b 802.11g	Pass
Linksys	WPC55AG	PCMCIA	802.11b 802.11g 802.11a	Pass
Magicstor	ORiNOCO Sliver	PCMCIA	802.11b 802.11g 802.11a	Pass
Netgear	WPN511	PCMCIA	802.11b 802.11g	Pass
NTT-ME	SSLAN Card 11HQ Wireless LAN PC Card	PCMCIA	802.11b 802.11g	Fail
PCi	PLANEX CQW- NS108AG	PCMCIA	802.11b 802.11g 802.11a	Pass
Proxim	ORiNOCO 11a/b/g ComboCard Gold - Japan 8480-JP	PCMCIA	802.11b 802.11g 802.11a	Pass
Sony	PCWA-C700	PCMCIA	802.11b 802.11g 802.11a	Fail
Sony	PCWA-C800S	PCMCIA	802.11b 802.11g 802.11a	Pass
Toshiba	IPC5038A Wireless LAN PC Card	PCMCIA	802.11b 802.11g	Pass
Buffalo	WLI-USB-KS11G	USB 1.1	802.11b 802.11g	Pass
Intel	WUD2011B	USB 1.1	802.11b 802.11g	Pass
3COM Corp.	3CRWE254G72	USB 2.0	802.11b 802.11g	Pass
D-Link	DWL-G120	USB 2.0	802.11b 802.11g	Pass
Linksys	WUSB54G	USB 2.0	802.11b 802.11g	Pass
U.S.Robotics	U.S. Robotics 802.11g Wireless USB Adapter 5420	USB 2.0	802.11b 802.11g	Pass