

**D-Link**<sup>®</sup>  
Building Networks for People



# Install Guide

Version 1.0

DCS-6620

## PTZ Internet Camera

# System Requirements

Minimum System Requirements:

- Internet Explorer Version 6.0 or above
- CPU Pentium 4, 2.0GHz plus processor
- Memory Size: 128MB or above
- 32MB AGP Video Card

# Package Contents



**DCS-6620**  
**PTZ Internet Camera & Remote Control**



**CD-ROM**  
**with**  
**Manual & Installation Wizard**



**A/V Cables**



**CAT5 Ethernet Cable**



**Camera Stand**



**12V AC Power Adapter**



Using a power supply with a different voltage rating will damage this product and void the warranty.

*If any of the above items are missing, please contact your reseller.*

# Hardware Overview

## Front

Motorized Zoom Lens

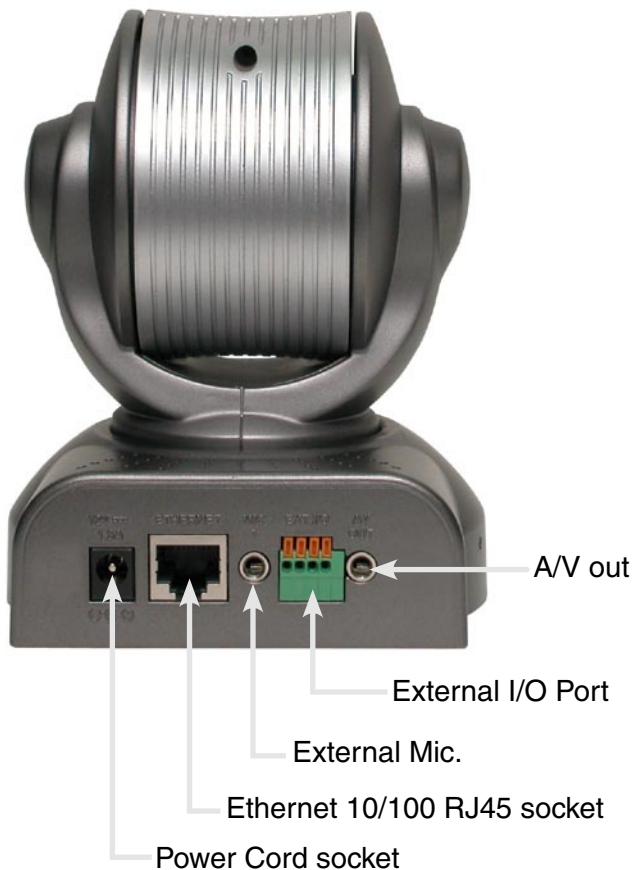


Built-In  
Microphone

Link LED

Power LED

## Rear



Connect the power adapter jack to the PTZ Internet Camera before plugging in to a power socket. This will reduce the risk of accidental electric shock.

# Hardware Installation

## Connect the Ethernet Cable

Connect one end of the Ethernet cable to the network cable connector located on the back panel of the DCS-6620, and attach the other end to a router, switch, or gateway on the network.



If you connect this camera directly to a PC, you will need a cross-over Ethernet cable. If you plug the camera into a hub or router, you will be able to use the cable included with your camera.



## Attach the External Power Supply

Attach the external power supply to the DC power input connector located on the PTZ Internet Camera's backpanel (labeled **12V**) and connect it to an AC power outlet.



Power source is confirmed when the LED Power Indicator on the PTZ Internet Camera is illuminated.



Both the red and green LEDs will flash alternately and only the red LED will remain lit. The green LED will not come on until you have configured your camera.

Attach the A/V cable to the A/V out connector if you wish to connect the **DCS-6620** to your TV set.



Attach the yellow RCA connector to the “video” connector on your TV.



Attach the white RCA connector to the “audio” connector on your TV.



# Installation Wizard

Insert the DCS-6200 CD into the CD-ROM drive.

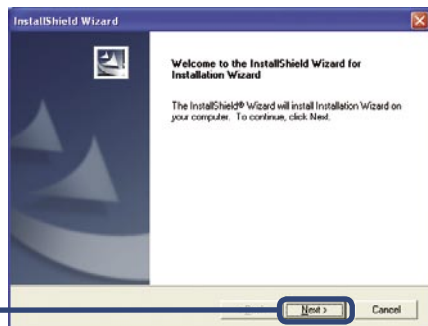
Click on **Install Software**.

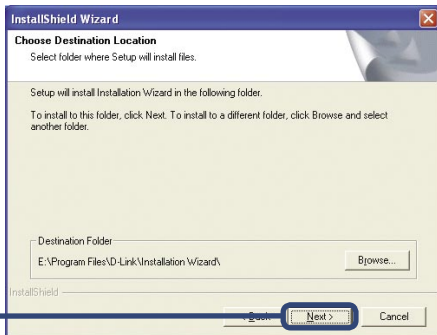
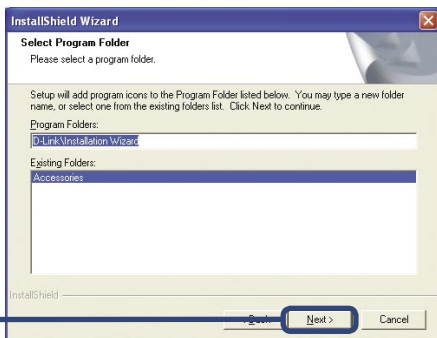
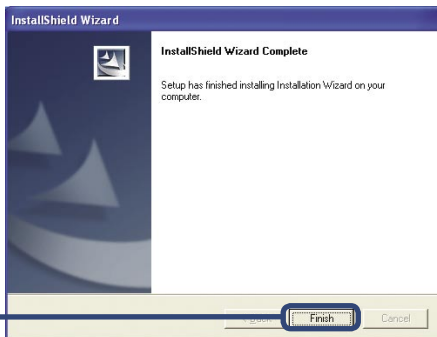


Click on **Install Wizard**.



Click **Next**



Click **Next**Click **Next**Click **Finish**

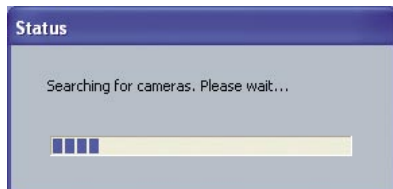


# Camera Configuration

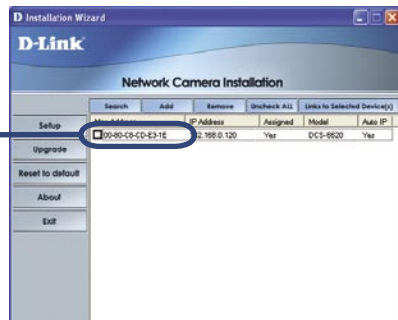
Double-click on the **Installation Wizard** icon, which should have been created on your desktop.



The software will search for cameras.

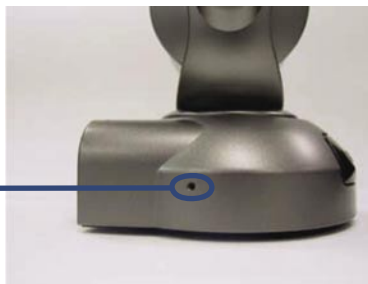


The **Installation Wizard** will now show a MAC address of the **DCS-6620** and an IP Address (which may or may not be correct depending on what you have your **DCS-6620** connected to). If you have a DHCP\* server on your network, there will be a valid IP Address displayed here. After a few seconds, the "assigned" column will display **yes**, indicating that the displayed IP Address is now assigned to the camera.



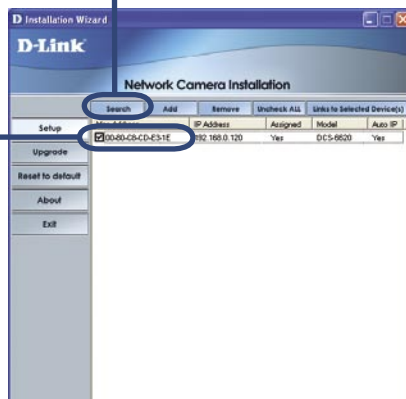
\*A DHCP server is a device that supplies IP Addresses to its clients that are on the same network.

If the **Installation Wizard** does not display any devices, you will need to find a tool small enough to fit into the reset hole and softly press down a switch for 2 cycles (about 5-7 seconds). The red and green LEDs will blink continuously and stop twice. Let go when the red LED starts to flash the second time.

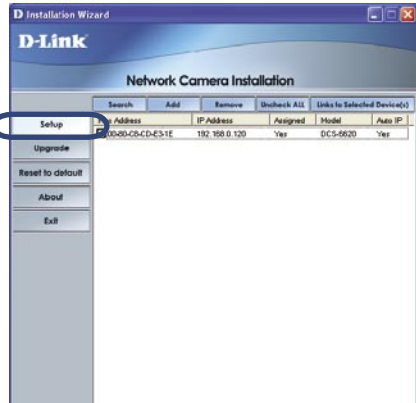


Click **Search** to refresh the list of cameras if needed.

Once the camera appears, select the camera by placing a **Checkmark** in the box.

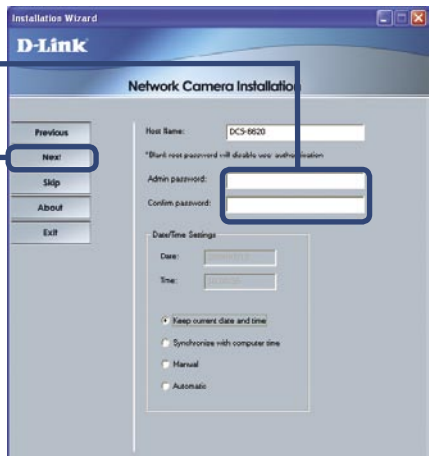


Click the **Setup** button.



Enter an administrative password in the Admin password and Confirm password fields.

Click the **Next** button.

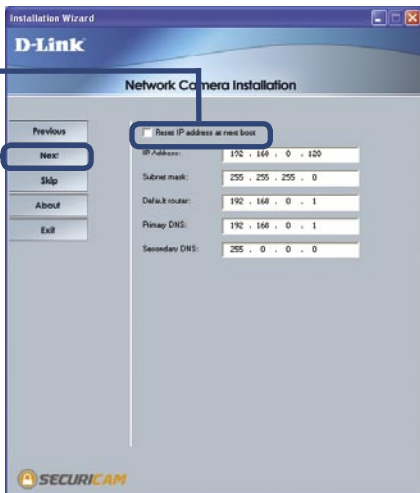


For details on the Date/Time Settings, please refer to the User Manual on the CD-ROM.

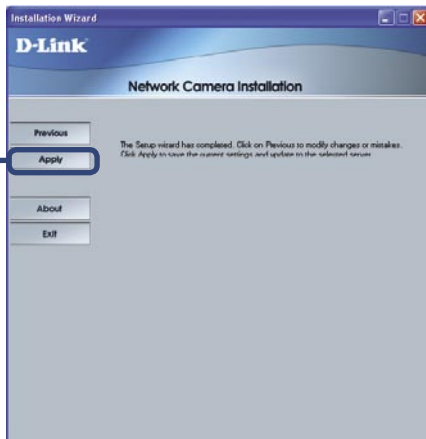
Uncheck the box labeled Reset IP address at the next boot.

Click the **Next** button.

If you need to modify the IP settings, please refer to the user manual on the CD-ROM.

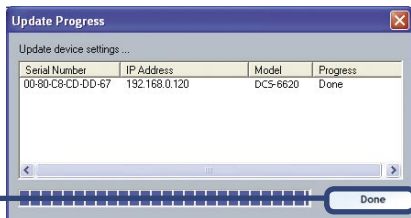


Click the **Apply** button.

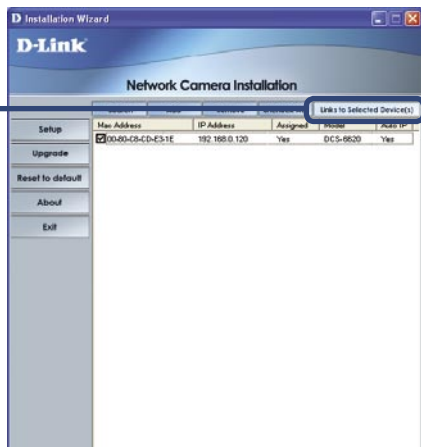


After the settings have been saved, the Done button will appear.

Click the **Done** button.



Click the button labeled **Link to Selected Device(s)**.



# Viewing your PTZ Internet Camera

After you click the button labeled **Link to Device(s)**, the **Installation Wizard** will automatically open your Internet browser to the IP Address of the **DCS-6620**, in this example it is: <http://192.168.0.146>. Your **DSC-6620** may have a different IP Address.



The installation and configuration of the **DCS-6620** PTZ Internet Camera is now complete.

# Notes

# Technical Support

D-Link's website contains the latest user documentation and software updates for D-Link products.

D-Link provides free technical support for customers within the United States and Canada for the duration of the product's warranty period.

U.S. and Canadian customers can contact D-Link Technical Support through our website or by phone.

## United States

### Telephone

(877) 453-5465

Twenty four hours a day, seven days a week.

### World Wide Web

<http://support.dlink.com>

### E-mail

[support@dlink.com](mailto:support@dlink.com)

## Canada

### Telephone

(800) 361-5265

Monday through Friday, 7:30am to 12:00am EST.

### World Wide Web

<http://support.dlink.ca>

### E-mail

[support@dlink.ca](mailto:support@dlink.ca)



Version 1.0

©2005 D-Link Corporation/D-Link Systems, Inc. All rights reserved. D-Link, the D-Link logo, and Securicam are trademarks or registered trademarks of D-Link Corporation or its subsidiaries in the United States and other countries. Other trademarks are the property of their respective owners. All references to speed are for comparison purposes only. Product specifications, size, and shape are subject to change without notice, and actual product appearance may differ from that depicted herein. Visit [www.dlink.com](http://www.dlink.com) for more details.

DCS-6620 04292005