

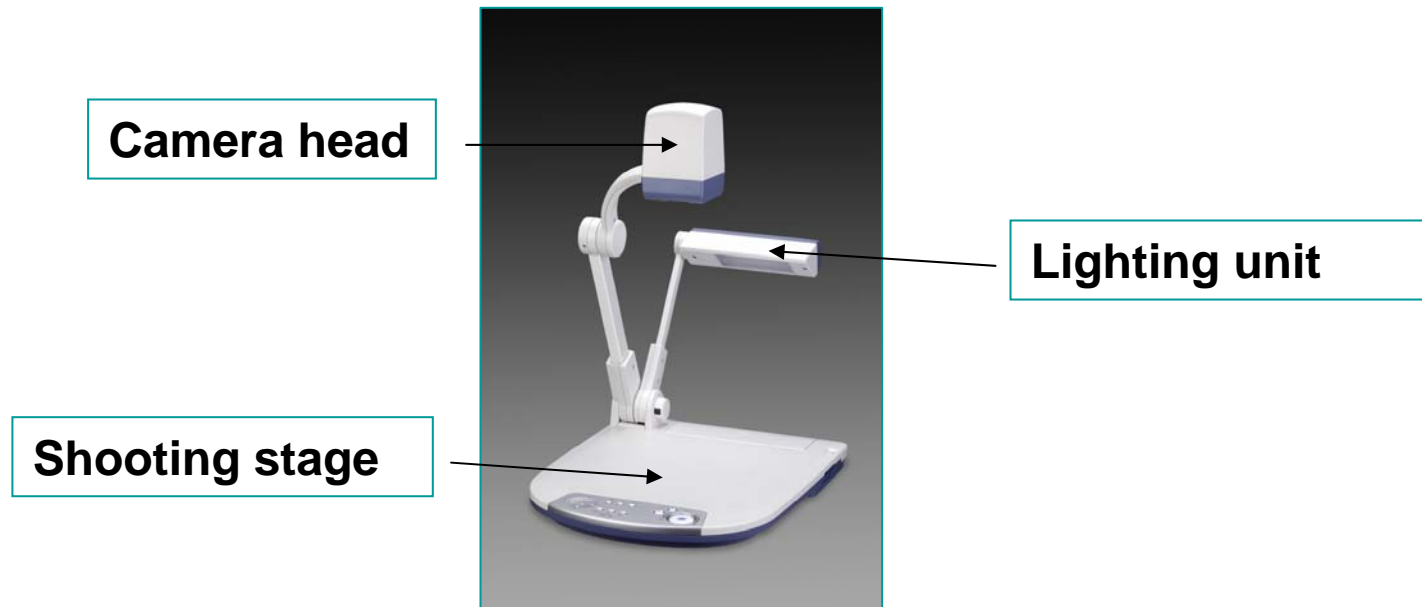
Elmo P30 Visualiser



ELMO

First Question:

- Q. Is everyone familiar with exactly what a visualiser is?
- A. A visualiser is effectively a camera on an arm, usually with a shooting stage and its own lighting source.



History

- Q. Which company invented the visualiser and why?
- A. Elmo invented the visualiser. It was a product originally developed for the scientific & medical market. Elmo themselves are based in Japan and have been one of the world's leading manufacturing of cameras for over 80 years.



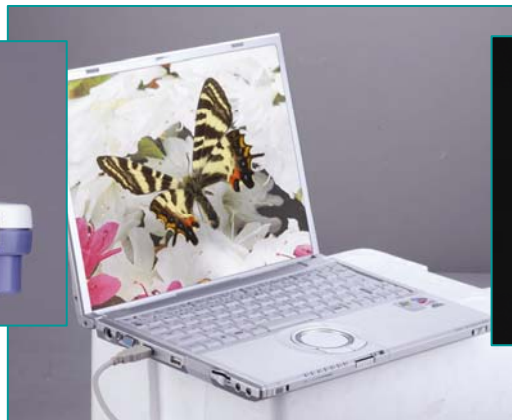
ELMO

Moving up to date

Q. How have visualisers improved over the last few years?

A. Better cameras

- Higher resolution – older visualisers tend(ed) to have composite video outputs. New units have XGA (or even SXGA) outputs
- Image capture to PC via USB connection
- USB-2 capability allows live XGA signals to be fed into a PC offering annotation via interactive white board or tablet software



ELMO

Demonstrating the P30

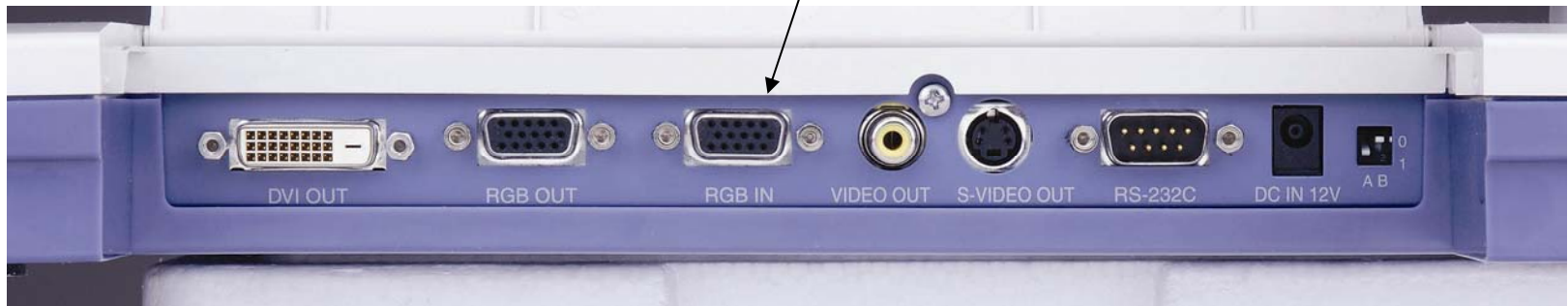
It is usually best to split your demonstration into two halves:

1. The first should concentrate on showing the your audience the visualiser as a camera
2. The second demonstrates the Image Mate software and how the image from the P30 can be used interactively (e.g. via a SMART Board). It should also touch on recording video clips and the use of the SD Card Reader.

Set up

- Connect the computer's VGA output cable into the RGB *input* on the P30.
- N.B. This may require you to disconnect an existing cable from wall plate or splitter.

15 pin VGA cable from PC *into* visualiser



Set up

- Connecting the VGA output cable (supplied) will now drive projector and PC monitor.

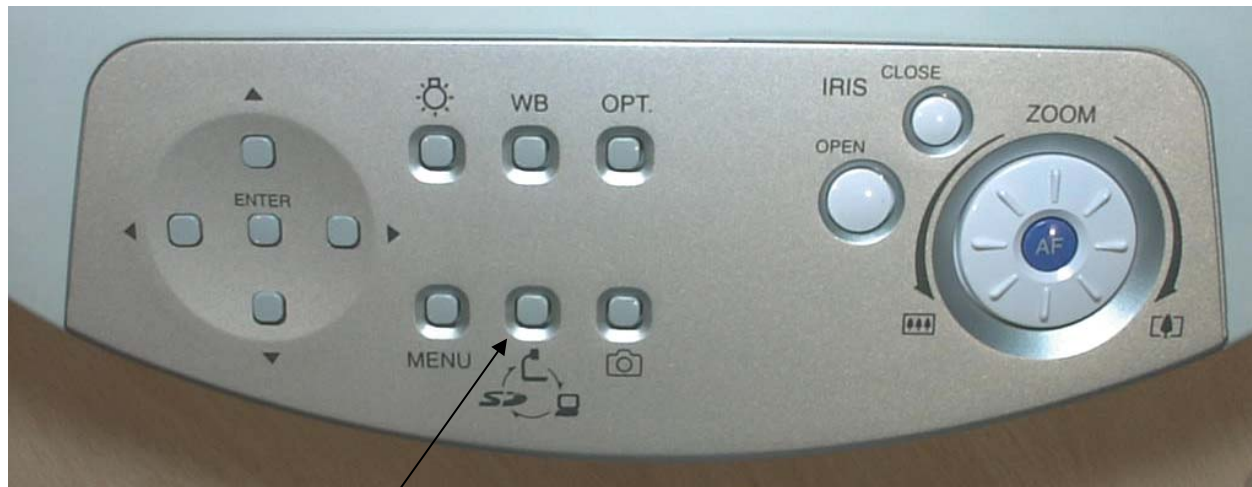
**15 pin VGA cable from visualiser into wall point
(or splitter)**



Connect power supply

Set up

- Connected in this way the visualiser will act as a switcher for the incoming PC signal.
- Switching from 'Camera' mode to 'PC' mode to 'SD Card Reader' may be carried out from either the front panel or R/C.



Button to switch mode

Set up

- Check P30 is set to correct USB mode. (Factory default is 'Mass Storage').
- Using on-screen 'Menu', change setting to 'Application'. This only has to be done once. N.B. Units shipping in the New Year are likely to be set to this mode as standard in the factory.



**Change mode to
'Application' if
required**

Set up

- Install Image Mate software on to a PC – preferably your own, as it is often difficult to get administrators rights to install software on school PC's.
- First step is to load CD, double click 'Set Up' and follow on-screen instructions.
- Once this stage is complete, connect USB cable from PC to visualiser. At this point PC should indicate 'found new hardware'. Follow on-screen instructions to complete installation.

USB cable from PC



ELMO

Demonstration Part 1 - Camera

1. Show A3 Shooting Area – Open an A4 text book and demonstrate the P30's ability to display both pages simultaneously. Most visualisers will crop an A3 image by around ½” either side.
2. Show the difference ‘Text’ mode makes to contrast. It is particularly useful in education as projectors are often low output. The ‘Text’ button may be found on the remote control.
3. Don't forget to reset ‘Text’ mode for general use.

I understand that the product will be fully checked and tested prior to my receipt and will be inspected upon its return. The product(s) remain(s) the property of Audio Visual Material Limited, and entrusted into my care for the sole purpose of sales demonstration. I shall not provide the above unit for hire whilst in my care nor shall I derive any other financial benefit from its loan and shall ensure that the unit is operated and demonstrated in accordance with the purposes for which it was designed. I undertake to ensure that the item is treated with care and attention.

The above item will be supplied to me complete with necessary accessories, and I will ensure that upon arrival the product and accessories are inspected and checked against the contents list/Product on Loan Statement and that the product is fully working. I understand that I am responsible for the condition of the unit and liable for any discrepancies or damage to the product/s and accessories incurred during the loan period. I undertake to ensure that at the end of the agreed loan period the above unit will be returned to AVM immediately via suitable safe and secure means. In the event of non return or damage, I understand I will be liable for the value of the unit at full current trade price.

I will not attempt to disassemble or tamper with the unit in any way and any technical questions, discrepancies or faults will be referred to AVM on 0870 9905671 immediately.

Signed _____ Name _____

‘Text’ mode off

I understand that the product will be fully checked and tested prior to my receipt and will be inspected upon its return. The product(s) remain(s) the property of Audio Visual Material Limited, and entrusted into my care for the sole purpose of sales demonstration. I shall not provide the above unit for hire whilst in my care nor shall I derive any other financial benefit from its loan and shall ensure that the unit is operated and demonstrated in accordance with the purposes for which it was designed. I undertake to ensure that the item is treated with care and attention.

The above item will be supplied to me complete with necessary accessories, and I will ensure that upon arrival the product and accessories are inspected and checked against the contents list/Product on Loan Statement and that the product is fully working. I understand that I am responsible for the condition of the unit and liable for any discrepancies or damage to the product/s and accessories incurred during the loan period. I undertake to ensure that at the end of the agreed loan period the above unit will be returned to AVM immediately via suitable safe and secure means. In the event of non return or damage, I understand I will be liable for the value of the unit at full current trade price.

I will not attempt to disassemble or tamper with the unit in any way and any technical questions, discrepancies or faults will be referred to AVM on 0870 9905671 immediately.

Signed _____ Name _____

‘Text’ mode on

ELMO

Zoom

- Elmo P30 has a 15x Optical Zoom. The zoom function is operable either by a unique and highly responsive dial system or via R/C.
- It has 60x Digital Zoom. An on-screen display will show 'Digital Tele' if zooming in and 'Digital Wide' if zooming out. Lens will be silent.



Focus

- The P30 has a one-touch Auto Focus button in the centre of the 'zoom' dial.
- Manual focus is accessed via the Remote Control. It is often necessary to use this with 3D objects.



Manual Focus

Auto Focus



ELMO

Example of Manual Focus



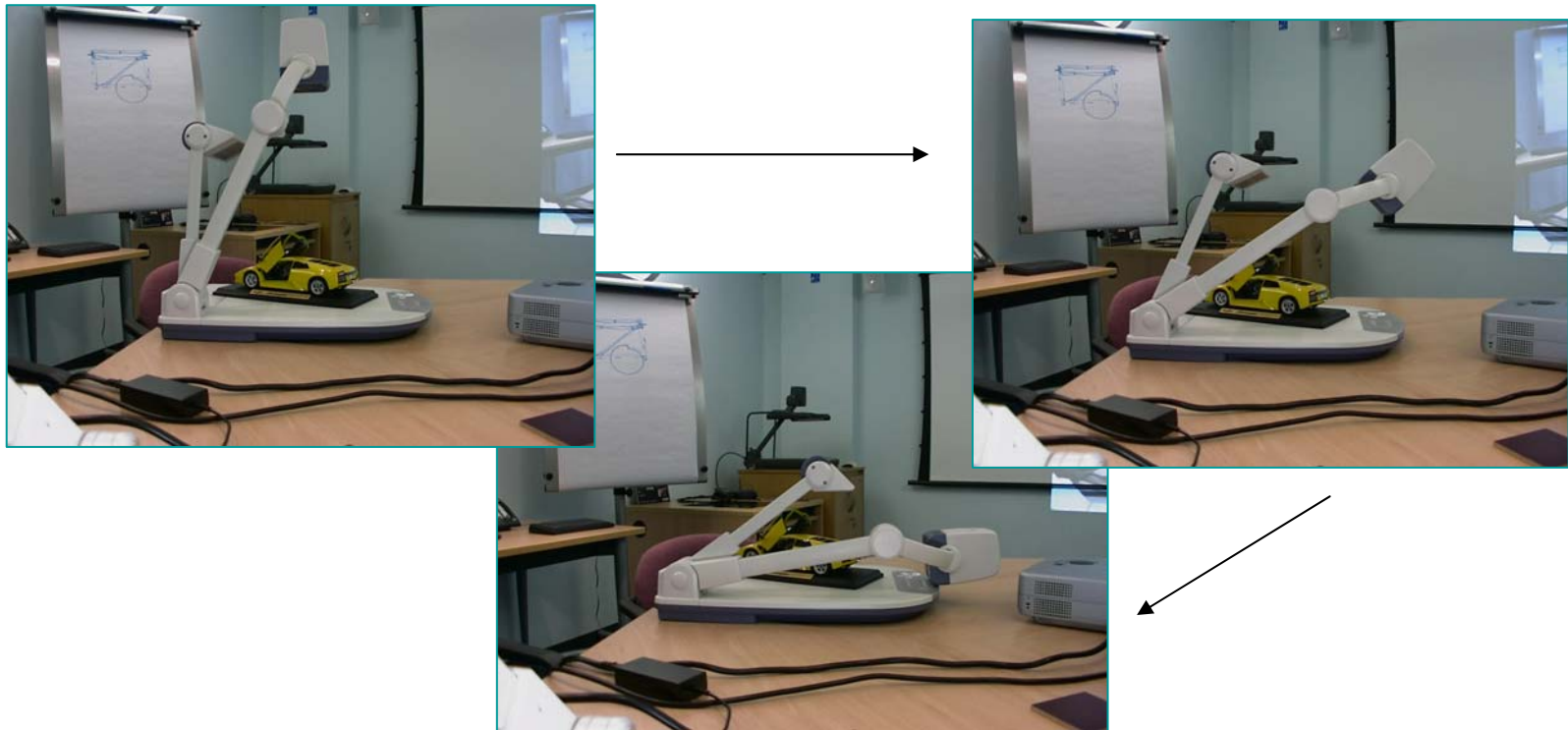
Manual Focus 'Near'



Manual Focus 'Far'

Unique multi-angle camera arm

- Most visualisers have a camera arm that locks into place for viewing objects from above, folding flat for storage.
- The P30 is different! It allows one to view 3D objects from the side!



ELMO

Viewing distant objects or those too large to place on the shooting stage

- Unclip close up lens to allow camera to focus on large documents e.g. maps, or demonstrations taking place in front or behind the visualiser. It is a good idea to point camera at attendees to demonstrate the effect.
- Don't forget to clip lens back in place when viewing objects on shooting stage.



Image Mate Software

- The second stage of the demonstration involves displaying the P30 image via the USB cable, into a PC.
- Image Mate software consists of two halves. Image Mate for Presentation (blue icon) and Image Mate for Movie Creation (orange icon).

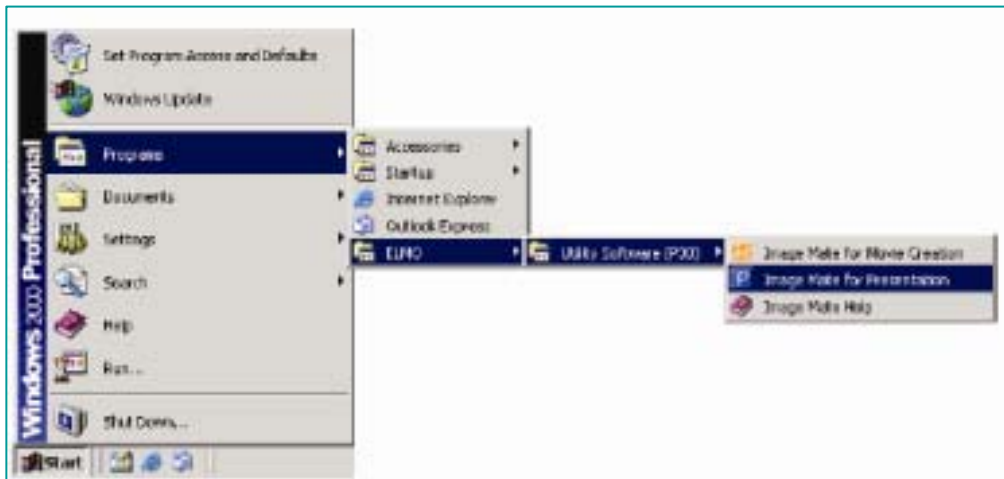


Image Mate for Presentation.Ink



Image Mate for Movie Creation.Ink

Image Mate for Presentation

1. Select 'Image Mate for Presentation'.
2. Click on 'Tools', 'Live Monitor' and select option 3 from the drop down list (i.e. 1024 x 768.) This ensures the output resolution of the P30 matches that of the projector and PC.
3. Click 'Play' icon.
4. Live image from P30 should appear in window.

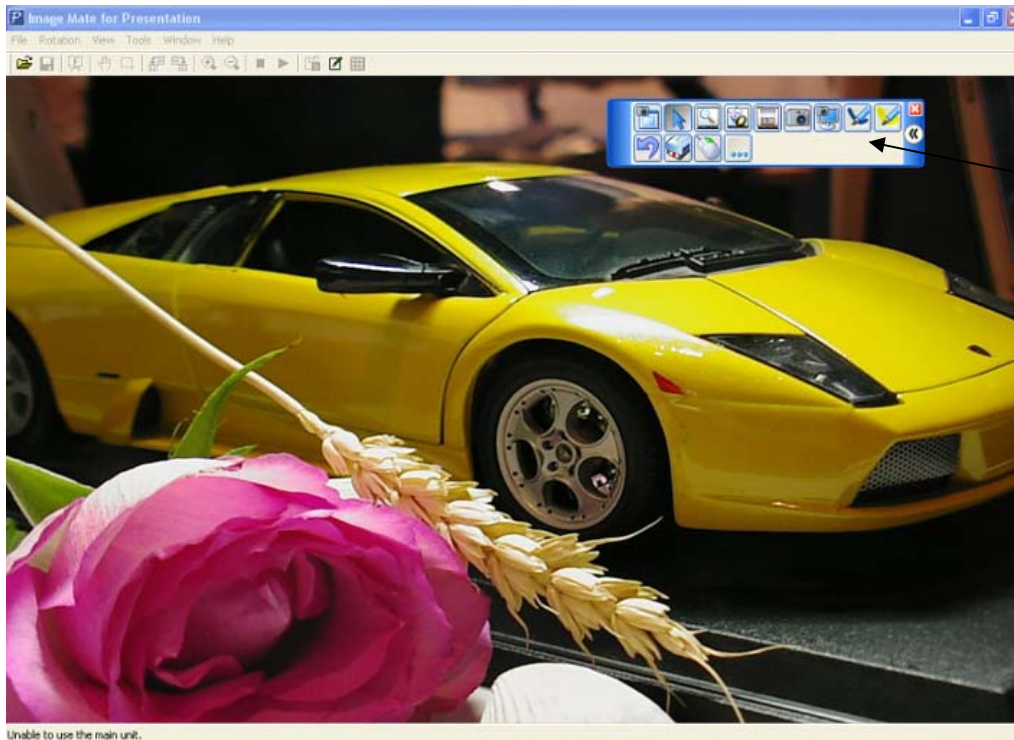


Click 'Tools', 'Live Monitor' and select 1024 x 768

'Play' Icon

Image Mate for Presentation

- With Live P30 image running in a window on the PC, select SMART 'Floating Tools' (or equivalent).



**SMART
'Floating Tools'**

Image Mate for Presentation

- Select 'Full Screen' icon in Image Mate software



**Full Screen
mode**

**The result is a full screen image from
the P30 with 'Floating Tools'
overlaid on the top**

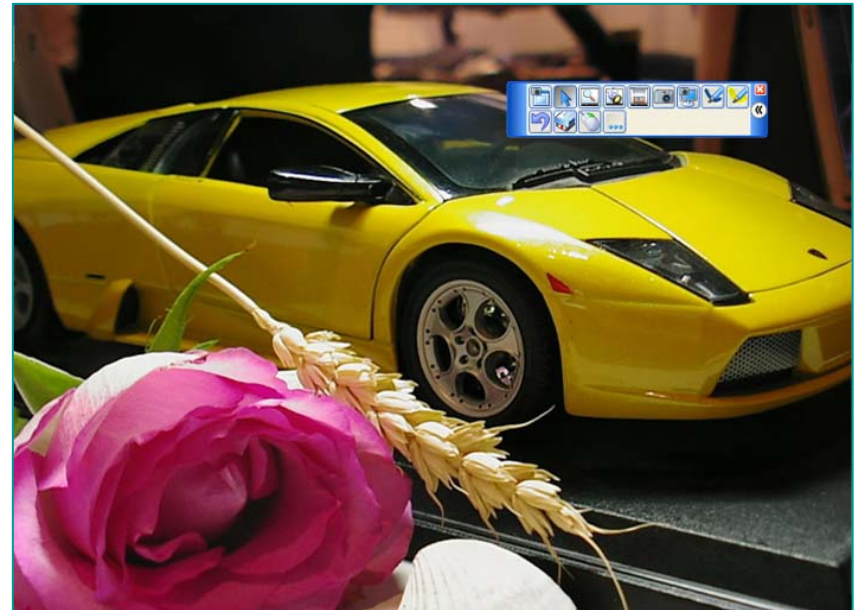


Image Mate for Presentation / IWB Software

- Picking up a pen from the tray 'freezes' the P30 image and facilitates annotation.

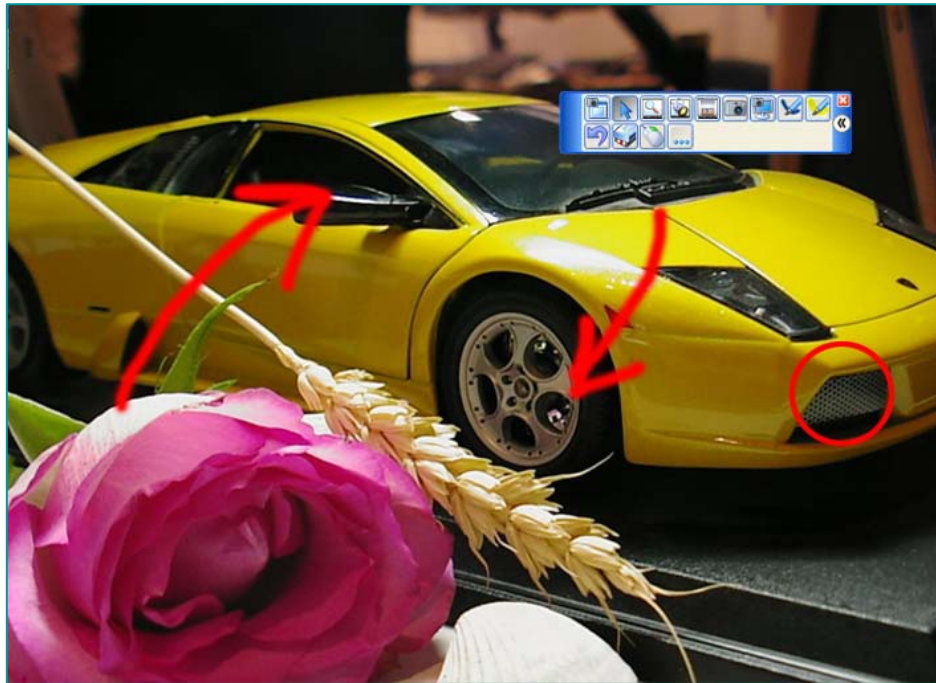


Image Mate for Presentation / IWB Software

- If required annotated image may be captured in full, in part or using 'freehand' cut-out tool. Once captured it automatically drops into SMART Notebook (or equivalent). N.B. Annotations are now embedded into original image.

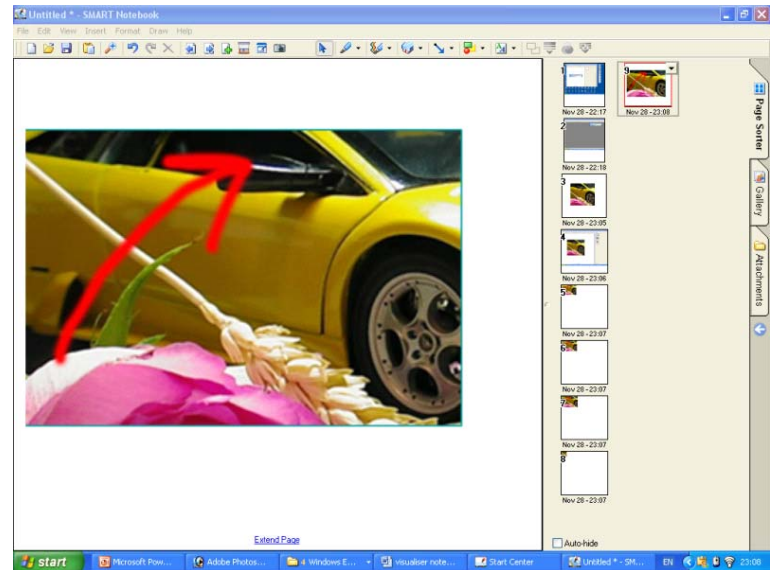


Image Mate for Presentation / IWB Software

- Alternatively capture image first into Notebook then annotate. Background and annotations will then remain separate

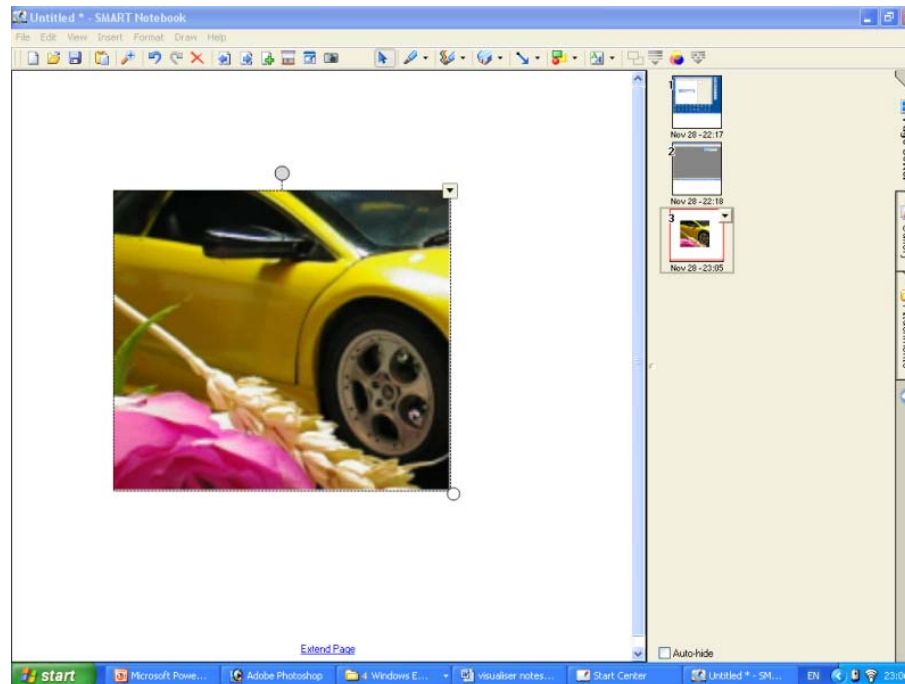


Image Mate for Presentation / IWB Software

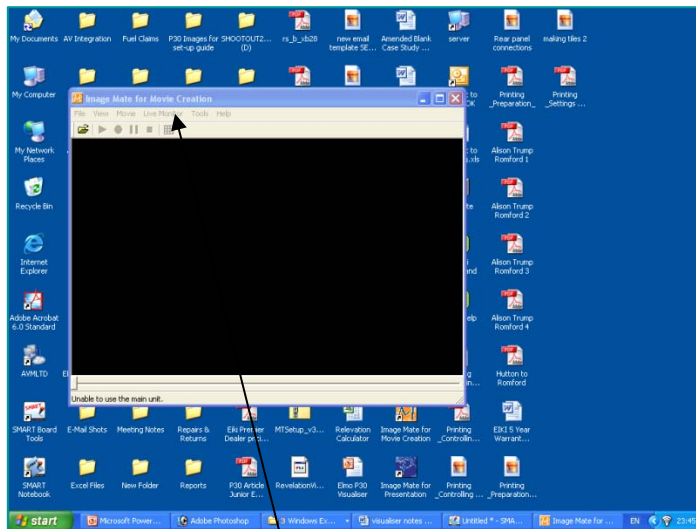
- Should one wish to return to a 'live' camera image at any time simply replace pen, click on cursor arrow in 'floating tools' and touch the screen.
- Should one wish to exit the full screen P30 image at any time, simply touch the screen a second time to return to PC desktop.



Cursor Arrow

Image Mate for Movie Creation

- This half of the Image Mate software is used for capturing Video Clips e.g. demonstrations. N.B. Image Mate for Presentation and Image Mate for Movie Creation cannot be open simultaneously.
- To begin click 'Live Monitor' then 'Start'. A live image will then appear in the window.



'Live Monitor', 'Start'

Image Mate for Movie Creation

- Next step: bring up R/C on screen by clicking on 'Remote Control' icon. All functions of the visualiser may now be controlled from the IWB.



'Remote Control' icon

Image Mate for Movie Creation

- Next step: To set recording levels to create a balance between image quality and file size. This only has to be done once.
- Click 'Tools', then 'Recording Settings'.
- Select the following:

Compression

AVI (no compression) WMV

Output video size

1 256x192 2 512x384 3 1024x768

Video Quality(1-100)

100

Frame Rate(1-20)(fps)

19

Maximum value

Recording limit options

Don't care Time m s Capacity 0 MB

Image Mate for Movie Creation

- Simply click the red 'Record' icon' to begin recording.
- Use the on screen R/C to operate the visualiser as required.
- Once complete press 'Stop'.
- To play back video clip click 'Movie', then 'Open'.
- Playback may be paused, stopped, fast forwarded or rewound at any point.

**Click 'Movie'
then 'Open'**



SD Card Reader

- Another unique feature of the P30!
- Allows one to capture images onto a removable data storage card without the need for a PC.
- Images may be shared with other visualisers and compatible digital cameras and may also be downloaded to PC.

SD Card slot



SD Card Reader

- To capture images onto SD Card, the visualiser must be in 'Camera' mode – this will be displayed in top right corner of projected image.
- Insert card and when ready to capture simply press the 'Camera' icon on either the R/C or base panel.

'Camera' icon



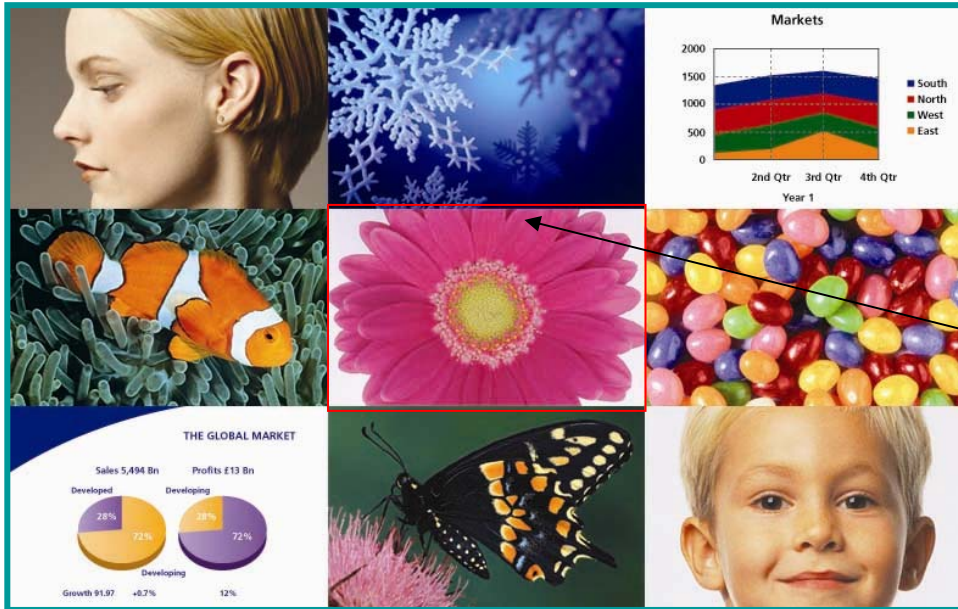
SD Card Reader

- To access images press 'SD' icon on R/C or press 'mode' button on base panel twice

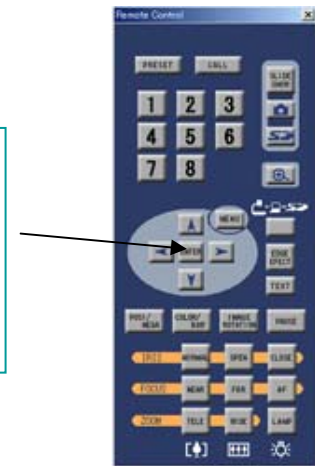


SD Card Reader

- Images from card can be displayed as either 1x1, 3x3 or 4x4.
- It is possible to navigate through images using cursor arrows on R/C or base panel to move red 'highlighter' box.



Use cursor arrows to move red box



SD Card Reader

- Click 'enter' to view image full screen.
- Use zoom buttons on R/C or dial on base panel to enlarge image, then use cursor arrows to move image around electronically on screen.

