

Article

New and Poorly Known Species of *Peniagone* (Holothuroidea, Elpidiidae) from the Northwest Pacific Ocean with Discussion on Phylogeny of the Genus

Antonina Kremenetskaia ¹, Andrey Gebruk ¹, Claudia H. S. Alt ² and Nataliya Budaeva ^{1,3,*}

¹ Shirshov Institute of Oceanology, Russian Academy of Sciences, 117218 Moscow, Russia; antonina@ocean.ru (A.K.); agebruk@gmail.com (A.G.)

² City of Bristol College, Bristol BS1 5UA, UK; delphi11@googlemail.com

³ Department of Natural History, University Museum of Bergen, University of Bergen, 5020 Bergen, Norway

* Correspondence: Nataliya.Budaeva@uib.no

Abstract: The northwest Pacific fauna of *Peniagone* includes at least seven species. In the present study we considered the following six species: *Peniagone dubia* and *P. mus* are re-described, *P. minuta* and *P. saveljevae* are described as new to science, additional information is provided on *P. vitrea* and *P. cf. purpurea*. *Peniagone japonica* was not included in the analysis. A potentially new species *Peniagone* sp. “miniatura” was distinguished based on morphological and molecular data but not formally described due to insufficient material. In the northwest Pacific, the species of *Peniagone* are distributed from 2400 to 8200 m. The bathymetric range of most of the species is narrow except for *P. mus* being also one of the deepest representatives of the genus. Only one species, *P. vitrea*, is known outside the northwest Pacific region. Partial sequences of COI and 16S rDNA were obtained for provisionally ten species of the genus (four of them from the northwest Pacific) and two other species of Elpidiidae which were used as an outgroup in phylogenetic analyses. The phylogenetic analyses results suggest that the northwest Pacific species of *Peniagone* are not closely related.

Keywords: Echinodermata; Elaspodida; deep-sea holothurians; taxonomy; abyssal and hadal fauna

Citation: Kremenetskaia, A.; Gebruk, A.; Alt, C.H.S.; Budaeva, N. New and Poorly Known Species of *Peniagone* (Holothuroidea, Elpidiidae) from the Northwest Pacific Ocean with Discussion on Phylogeny of the Genus. *Diversity* **2021**, *13*, 541. <https://doi.org/10.3390/d13110541>

Academic Editor: Michael Wink

Received: 27 September 2021

Accepted: 22 October 2021

Published: 28 October 2021

Publisher’s Note: MDPI stays neutral with regard to jurisdictional claims in published maps and institutional affiliations.



Copyright: © 2021 by the authors. Licensee MDPI, Basel, Switzerland. This article is an open access article distributed under the terms and conditions of the Creative Commons Attribution (CC BY) license (<https://creativecommons.org/licenses/by/4.0/>).

1. Introduction

The genus *Peniagone* is the most species rich in the family Elpidiidae including 33 valid species according to WoRMS [1]. The genus commonly occurs in all oceans except for the Arctic, with the highest species diversity in the Antarctic and the Pacific Ocean [2]. The vertical distribution of *Peniagone* ranges from 220 to 8660 m, with most records at the lower bathyal and abyssal depths. The genus is characterized by a high diversity of morphological features such as form and size of its velum, the position and size of its tube feet and the configuration of the tentacle crown. These features are of particular interest for questions on colonization and adaptation to the deep-sea environments since in *Peniagone* species they are related to the swimming mode and/or adaptations to balancing of the body on substrate, in the presence of the near-bottom currents [3].

The deep-sea northwest Pacific echinoderm fauna is one of the most species rich [4]. Data on the northwest Pacific deep-sea holothurians began accumulating since the HMS *Challenger*, USFS *Albatross* and the local Japanese cruises, from 1875 to the early 20th century [5–7]. The Zoological Institute in Leningrad (now St. Petersburg, Russia) has conducted numerous cruises to the Bering Sea and to the Sea of Okhotsk, which resulted in a series of papers on the echinoderm taxonomy [8–12]. Since 1949, the northwest Pacific has been explored by the Soviet RV *Vityaz* expeditions which collected extensive material from the Kuril–Kamchatka, Aleutian, Japan and Izu–Bonine trenches and adjacent abyssal

and bathyal areas. Based on these materials, several studies were published on Myriotrochidae [13,14], *Elpidia* [15], *Kolga* [16] and *Psychropotes* [17]. Despite relatively extensive historical explorations in the region, the recent deep-sea cruises KuramBio [18], SokhoBio [19] and KuramBio II [20] collected many species and even genera new to science [17,21], most of them remaining undescribed.

So far, the northwest Pacific fauna of *Peniagone* was not sufficiently explored. Among six species reported for the area, *P. dubia* (Djakonov et Saveljeva), *P. japonica* Ohshima and *P. mus* Djakonov are known only from the original descriptions, all of them lacking information on the morphological characters presently used for species delimitation. Another species common to the area identified as *Peniagone* cf. *incerta* (Théel) in Mironov et al. [4] requires further investigation due to identification uncertainty. Two more species, *P. purpurea* Théel and *P. gracilis* (Ludwig), reported by Gebruk [22] are also in need of re-examination since some of their morphological features differ from those in the original descriptions. In the present study, we examine materials collected in recent expeditions to the northwest Pacific and re-examine some of earlier RV *Vityaz* collections from this area. In particular, we re-describe two poorly known species, *Peniagone dubia* and *P. mus*, describe two species new to science, *P. minuta* and *P. saveljevae* and provide additional information on *P. vitrea* Théel and *P. cf. purpurea*. (Figures 1–8). Molecular data were obtained for *P. mus*, *P. saveljevae* and *P. cf. purpurea* and used for phylogenetic analysis (Figures 9 and 10).

2. Materials and Methods

Specimens were collected during three German-Russian cruises: KuramBio (2012), SokhoBio (2015) and KuramBio II (2016). Additionally, the specimens obtained during the following cruises of the RV *Vityaz* were re-examined: 8 (1951), 19 (1954), 22 (1955), 29 (1958), 39 (1966), 43 (1968), 45 (1969), 52 (1972) and 57 (1975). All specimens were collected using benthic trawls and mainly preserved in ethanol. Records of species with locality and sampling data are published through GBIF [23].

Specimens were identified based on standard characters used for elpidiid holothurians [24]. Features of external morphology were examined using a stereomicroscope; slide preparations of calcareous epidermal elements (ossicles) of dorsal and ventral sides were examined using a compound microscope Olympus BX43.

Abbreviations used for specimen repositories: IORAS, P.P. Shirshov Institute of Oceanology, Moscow, Russia; MIMB, Museum of the A.V. Zhirmunsky National Scientific Center of Marine Biology, Vladivostok, Russia; NHM, Natural History Museum, London, UK; NMNH, National Museum of Natural History, Washington, USA; NOCS, National Oceanography Centre, Southampton, UK; SGN, Senckenberg Research Institute and Natural History Museum, Frankfurt, Germany; ZIN, Zoological Institute, St. Petersburg, Russia; ZMBN, University Museum of Bergen, University of Bergen, Norway. Specimens from SokhoBio, KuramBio and KuramBio II cruises currently stored in IORAS will be later deposited at MIMB (SokhoBio and KuramBio) and SGN (KuramBio II).

Samples for molecular analyses were taken during the KuramBio, SokhoBio and KuramBio II cruises. Other sequences were obtained in GenBank and BOLD; GenBank Accession Numbers and BOLD Process ID are listed in Tables S1 and S2. Laboratory work was performed in the DNA Lab of the University of Bergen, Norway. Fragments of cytochrome c oxidase subunit I (COI) and 16S ribosomal RNA (16S) were amplified and sequenced using the universal and specific echinoderm primers (Table S1) [25–29]. Genomic DNA was extracted with QuickExtract™ DNA Extraction Solution using the following protocol: 100 µL of QuickExtract solution was added to each sample air-dried from ethanol, incubated for 45 min at 65 °C, following 2 min at 98 °C. Amplification was performed with TaKaRa Ex Taq HS version kit (Takara BIO, Kusatsu, Japan) in a 25 µL reaction consisted of 1 µL of DNA extract, 17.35 µL of purified water, 2.5 µL of 10× Ex Taq buffer, 2 µL of dNTP mixture, 1 µL of each primer and 0.15 µL of TaKaRa Ex Taq HS. 16S fragment was amplified under the following conditions: 94 °C for 5 min; 35 cycles of 94 °C for 0.5 min, 50 °C for 1.5 min and 72 °C for 1 min; followed by final extension at 72 °C for 10 min.

COI fragment was amplified using the following conditions: 94 °C for 12 min; 35 cycles of 94 °C for 35 s, 48 °C for 70 s and 72 °C for 55 s; followed by final extension at 72 °C for 10 min. The amplified products were purified and sequenced using the Sanger method by Macrogen Europe (Amsterdam, Netherlands).

Sequences of *Peniagone azorica* von Marenzeller, *P. coccinea* Rogacheva et Gebruk and *P. islandica* Deichmann were obtained by C.A. from specimens collected on the ECOMAR cruise in 2010 [30]. DNA was extracted using QIAGEN DNeasy extraction kit following the manufacturers protocol. The PCR mix contained 0.2 µM of each forward and reverse primer (Table S1), 1× QIAGEN Multiplex PCR Master Mix and 1 µg template DNA in a final 20 µL reaction volume. The PCR amplification conditions were as follows: 94 °C for 15 min, followed by 35 cycles at 94 °C for 30 s, 50 °C (for 16S) and 48 °C (for COI) for 90 s, 72 °C for 60 s, and a final extension at 60 °C for 10 min.

Sequences were manually edited and assembled in *Geneious v.7* software and then aligned in MEGA 7 [31] using MUSCLE algorithm. *PartitionFinder2* [32] was used for selecting best-fit partitioning schemes and models of nucleotide evolution. The most appropriate models were HKY for COI codon positions 1 and 2, and K81 for COI codon position 3, and GTR + G for 16S. In the analysis based on concatenated COI and 16S data, GTR + I + G was most appropriate for all partitions. Phylogenetic trees were generated using Bayesian inference in *MrBayes v. 3.2* [33] for single genes and for concatenated COI and 16S matrix. For each dataset, two independent analyses each of four chains were run for 10,000,000 generations. The trees were sampled every 100th generation and 25% trees discarded as burn-in. Sufficiency of run convergence was evaluated using *Tracer v.1.7.1*. Genetic distances were calculated in MEGA 7 using Between Group Mean Distance algorithm.

3. Taxonomy

Order Elasipodida Théel, 1882.

Family Elpidiidae Théel, 1882.

Genus *Peniagone* Théel, 1882.

3.1. *Peniagone dubia* (Djakonov et Saveljeva in Djakonov et al., 1958)

Figures 1A,B and 2A–I.

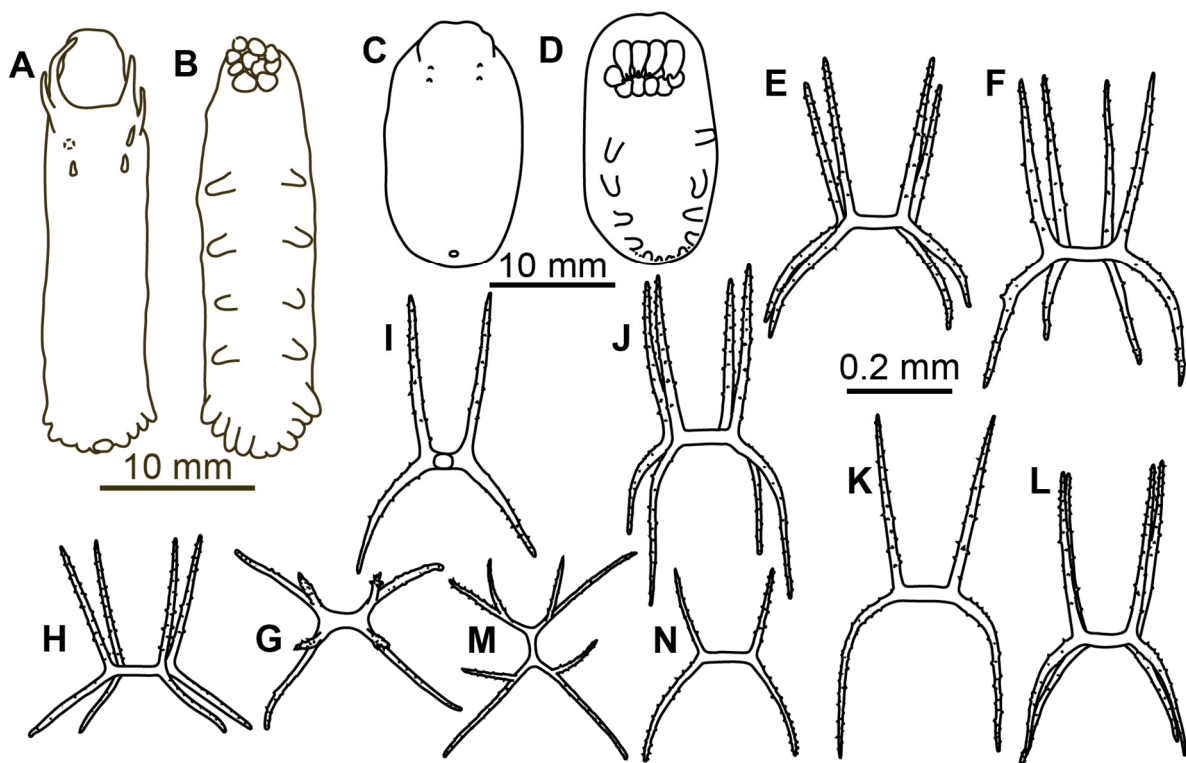


Figure 1. *Peniagone dubia* and *P. minuta* sp. nov. (A,B) *P. dubia*, dorsal and ventral view of specimen IORAS ECH01476; (C–L) *P. minuta*: (C,D) dorsal and ventral view of the holotype, dorsal (E–L) and ventral (M,N) ossicles, scale 0.2 mm, a pair of arms and apophyses omitted on (I,K,N).

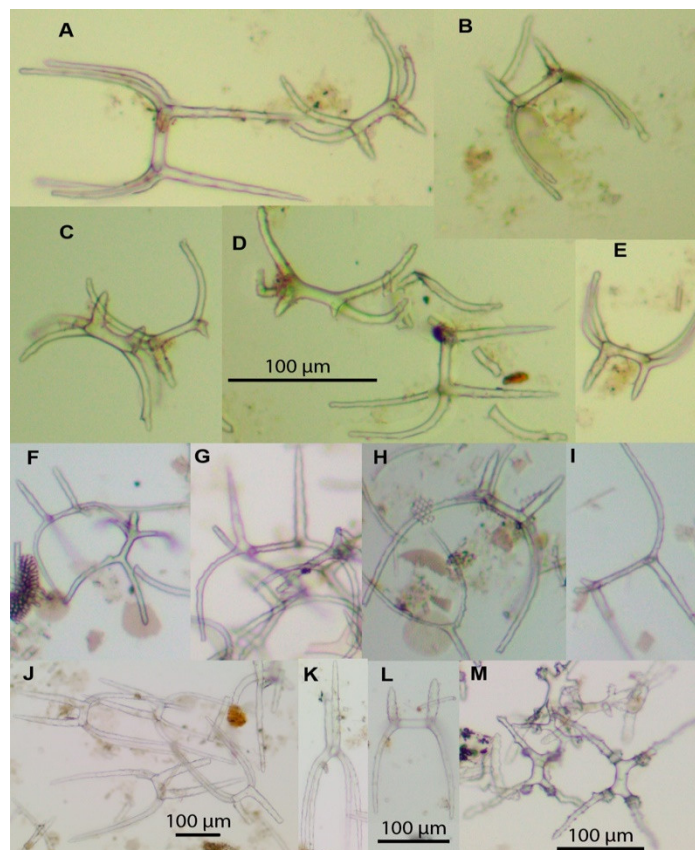


Figure 2. Ossicles of *Peniagone dubia* (A–I) and *P. mus* (J–M). (A–E) syntype of *Elpidiogone dubia* ZIN 1/15626, bodywall ossicles; (F–I) *P. dubia*, RV Vityaz, St. 5637, ECH01118, dorsal ossicles; (J–K,M) *P. mus*, R/V Sonne, St. 98, dorsal (J–K) and ventral (M) ossicles. (L) *P. mus*, R/V Vityaz, St. 956, dorsal ossicle.

Elpidiogone dubia Djakonov et al., 1958: 361–363, Figures 2–4 [11].

Peniagone dubia—Hansen, 1975: 144–145 [24]; Gebruk, 1990 (in Russian): 102–103, Figure 40 [22]; Mironov et al., 2018: 354 [34].

Type material. Six syntypes, ZIN 15626-1, RV *Toporok*, St. 15, Kuril-Sakhalin expedition, 27.08.1948, 45.05° N, 146.21° S, 2850 m, http://zin.ru/collections/Holothuroidea/specimen.html?Catalog_UID=1344281483110961 (accessed on 13 May 2021)

Material examined. Syntype of *Elpidiogone dubia* ZIN 1/15626 (slide preparation of skin ossicles); RV *Vityaz*, St. 5637, 09.09.1966, 44° 29' N, 149° 06' E, 2685–3035 m, IORAS ECH01295 and ECH01118, numerous fragments; St. 6671, 23.06.1972, 40° 12' N, 143° 35' E, 2400–2720 m, IORAS ECH01476, 2 specimens and fragments of 70+ specimens.

Diagnosis (amended). Body width about ¼ of body length. Two pairs of free minute papillae behind velum. Tube feet four pairs free in the middle part of body, beginning at the level of the last pair of minute dorsal papillae; five-six pairs fused forming posterior lobe. Dorsal ossicles with arms 0.05–0.1 mm in length, curved to almost flat; two apophyses 0.02–0.1 mm in length, shorter or of same length with arms. Ventral ossicles with elongated central stem, arms 0.0–0.012 mm in length; small apophyses four rarely 2–3.

Description of material. Two preserved complete specimens were 27 mm long/6.5 mm wide and 29 mm long/7.2 mm wide. Both specimens were in poor condition, however main external morphological features can be ascertained. Body elongated (Figure 1A,B). Dorsal velum composed of two pairs of papillae, first pair longer than second. Tentacles 10. Two anteriormost pairs of tube feet located in the anterior half of the body. Four anterior pairs of tube feet free, bigger than other pairs. Posterior tube feet decreased in size towards posterior end and partly fused. Dorsal ossicles (Figure 2F–I) with arms curved to varying degree, may look down almost vertically; two apophyses shorter than arms or the same length with arms; arms 0.08–0.1 mm in length, apophyses 0.05–0.1 mm in length; smaller ossicles also present with arms about 0.05 mm and apophyses 0.02–0.03 mm; apophyses and arms with small spines. Ventral ossicles with elongated central stem, arms 0.0–0.012 mm in length; small apophyses usually four (one on each arm), but 2–3 apophyses also present.

Genetic data. No genetic data is available for this species.

Distribution. Type locality is in the southern part of the Sea of Okhotsk at depth 2850 m. New records are in the northwest Pacific at depths 2400–3015 m (Figure 11).

Remarks. Description of the species was based on six poorly preserved specimens deposited at the Zoological Institute, St. Petersburg (Russia). In the original description, details of dorsal and ventral ossicles were missing. However, ossicles were found during re-examination of the original slides of the bodywall skin of the syntype ZIN 1/15626 (Figure 2A–E). Several ossicles were found with strongly curved arms that are characteristic of the dorsal skin in *Peniagone* (Figure 2A(left), B,D(right)). The species *P. dubia* is well distinguished by small dorsal ossicles with slender arms and only two apophyses. Among the species of *Peniagone* with ossicle arms ~0.1 mm in length, including *P. challengerii* Théel, *P. lugubris* Théel, *P. purpurea* (Théel), *P. intermedia* Ludwig, *P. papillata* Hansen, *P. vedeli* Hansen, *P. herouardi* Gebruk, and *P. dubia*, only in the latter the dominant dorsal ossicles bear one pair of apophyses. The arrangement of tube feet with four anteriormost pairs free and other pairs fused forming the posterior lobe is the unique feature of external morphology differing *P. dubia* from the above listed species.

3.2. *Peniagone minuta* Kremenetskaia et Gebruk sp. nov.

Figures 1C–N and 3E–G.

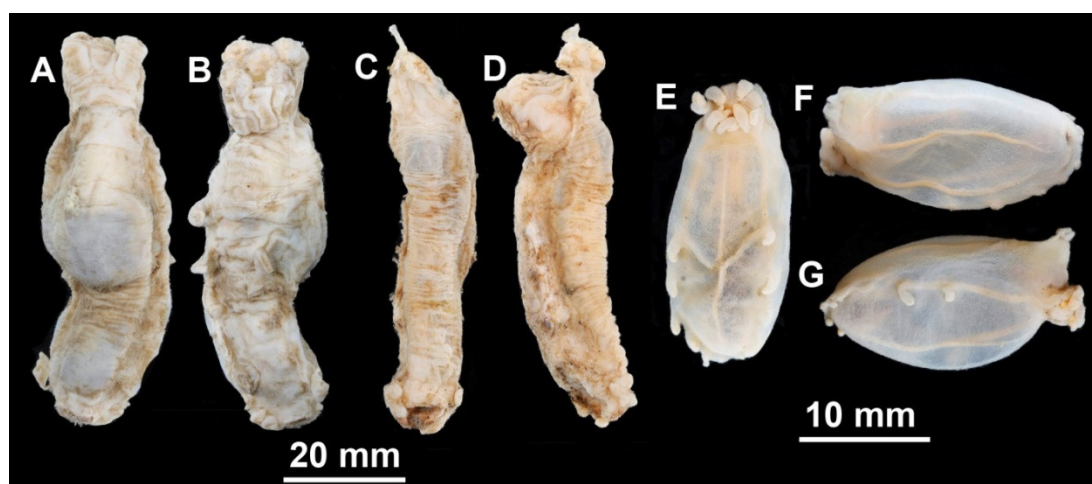


Figure 3. (A,B) *Peniagone mus*, IORAS ECH02148, dorsal and ventral view; (C,D) *Peniagone saveljevae* sp. nov., holotype, IORAS ECH02165, dorsal and lateral view; (E–G) *Peniagone minuta* sp. nov., paratype, IORAS ECH02170, ventral, dorsal and side view respectively. (A–D), scale 20 mm; (E–G) scale 10 mm.

Peniagone gracilis (Ludwig)—Gebruk, 1990 (in Russian): 96–97 (partim.), Figure 36(1–12) [22].

Holotype. Specimen 22 mm in length, IORAS ECH02166, RV *Vityaz*, St. 6085, 01.05.1969, *Sigsbee* Trawl, 50°48'6" N, 173°29'0" W, 6965–7000 m.

Paratypes. 12 specimens, 14–21 mm in length, IORAS ECH02170, collected at same station as the holotype.

Additional material. RV *Vityaz*, St. 3491, 07.10.1955, *Sigsbee* Trawl, 30°34' N, 142°41.1' E, 7305–7315 m, IORAS ECH01059, ECH01060, ECH01065, ECH01067, ECH01286, ECH01479, ~50 specimens; RV *Vityaz*, St. 6015, 25.04.1968, 26°51' N, 165°32' E, 5850 m, IORAS ECH01041, 2 specimens; St. 6085 (type locality), IORAS ECH01040, 84 specimens; St. 6144, 16.06.1969, *Sigsbee* Trawl, 51°42'5" N, 168°5'0" W, 7200 m, IORAS ECH01052, 28 specimens; St. 6145, 20.06.1969, *Sigsbee* Trawl, 51°1'19" N, 174°35'5" E, 7250 m, IORAS ECH01114, 5 specimens; St. 7404, 09.05.1975, *Sigsbee* Trawl, 29°14'N, 142°30' E, 6890–6770 m, IORAS ECH01050, 32 specimens; St. 7407, 11.05.1975, *Galathea* Trawl, 29°18' N, 143° 15' E, 6850–6740 m, IORAS ECH01054, 9 specimens.

Diagnosis. Body oval, convex, body length up to 35 mm. Skin translucent, colorless, with dense ossicle layer. Tube feet 5–7 pairs, 3–4 anterior pairs bigger and 2–3 pairs smaller tube feet forming narrow posterior brim, anteriormost pair located at about a half of the body. Velum short, wide, two pairs of very small papillae behind velum. Dorsal ossicles with four spinous apophyses, apophyses slightly curved inside or straight, up to 0.35 mm long, from half to the same length as the arms; arms up to 0.4 mm, spinous proximally, curved downwardly and inside. Ventral ossicles with four apophyses up to 0.2 mm in length, arms curved downwardly, up to 0.35 mm.

Description of material. Specimens from St. 6085 were in the exceptionally good condition (Figure 3E–G); other specimens in condition from poor to moderate. Body length from 11 to 24 mm (in type series) and up to 35 mm at other stations; body oval, convex on dorsum and sometime on ventrum (Figures 1C,D and 3E–G). Ten tentacles; five anterior tentacles with a pair of long lobes on their aboral margin. Velum formed by two pairs of fully fused papillae, no free tips clearly visible in the preserved specimens. Dorsal papillae two pairs, very small, often lost. Tube feet located from about mid-body to the posterior end in most specimens although in some specimens anteriormost tube feet appeared in the anterior body half. Tube feet of four first pairs often the biggest in most of the specimens. Smaller posterior tube feet are often poorly visible, posterior brim narrow. Dorsal ossicles with arms mostly ~0.2 mm long, occasionally up to 0.4 mm, usually spaced widely, curved downwardly or occasionally almost straight, with small spines; apophyses four, spines more prominent and numerous than on arms, apophyses almost straight,

mostly broken at their ends even in better preserved specimens, apophyses length up to 0.35 mm (Figure 1E–L). Ventral ossicles similar to dorsal in shape, but smaller and slender; arms curved, up to 0.35 mm, apophyses four, up to 0.2 mm, spiny (Figure 1M,N). Calcareous ring pieces with 9 pairs of arms, which can be subdivided. Polian vesicle single.

Genetic data. No genetic data is available for this species.

Etymology. The name *minuta* indicates the relatively small size of this species.

Distribution. Aleutian and Izu–Bonine trenches, at 6850–7315 m; one record in the northwest Pacific abyssal plain at 5850 m. Type locality in the Aleutian Trench, off Atka Island.

Remarks. Specimens collected at *Vityaz* stations 3491, 6015, 6085, 6144, 6145, 7404 and 7407 were identified as *Peniagone gracilis* (Ludwig) by Gebruk [22] as well as the North Atlantic specimens from St. 390-3 of RV *Akademik Mstislav Keldysh*. Re-examination of the syntypes of *Scotoanassa gracilis* Ludwig NMNH 18178 and 18179 revealed remarkable differences in ossicle morphology: (i) ossicles in the syntypes were smaller than in *P. minuta*, their arms rarely exceeded 0.2 mm in length; (ii) apophyses were usually longer than arms. Unfortunately, both syntypes were in poor condition lacking details of external morphology. According to Ludwig [35], the syntypes were up to 68 mm long suggesting that *P. gracilis* exceeds *P. minuta* in body length.

Gebruk [22] assigned *P. japonica* Ohshima to *P. gracilis* based on details of external and ossicle morphology in the original description [7]. *Peniagone japonica* is known from three stations off Japan at 1142–1680 m and is characterized by body length 55 mm, eight pairs of tube feet, dorsal deposits with bent arms 0.12–0.2 mm long and four apophyses 0.7–0.12 mm long, and ventral ossicles of similar shape to those on dorsum, with arms 0.09–0.14 mm and apophyses 0.02–0.05 mm long. Although the shape of ossicles is similar in *P. minuta* and *P. japonica*, ossicles in *P. japonica* are remarkably smaller and this distinguishes this species from *P. minuta*.

Peniagone minuta is characterized by the relatively small size, oval shape and a small number of tube feet, the features clearly distinguishing it from most of other species of the genus. Such a body shape and a small tube feet number are known in preferentially swimming species such as *P. diaphana* (Théel) and *P. leander* Pawson et Foel.

3.3. *Peniagone mus* Djakonov, 1952

Figures 2J–M, 3A,B and 4.

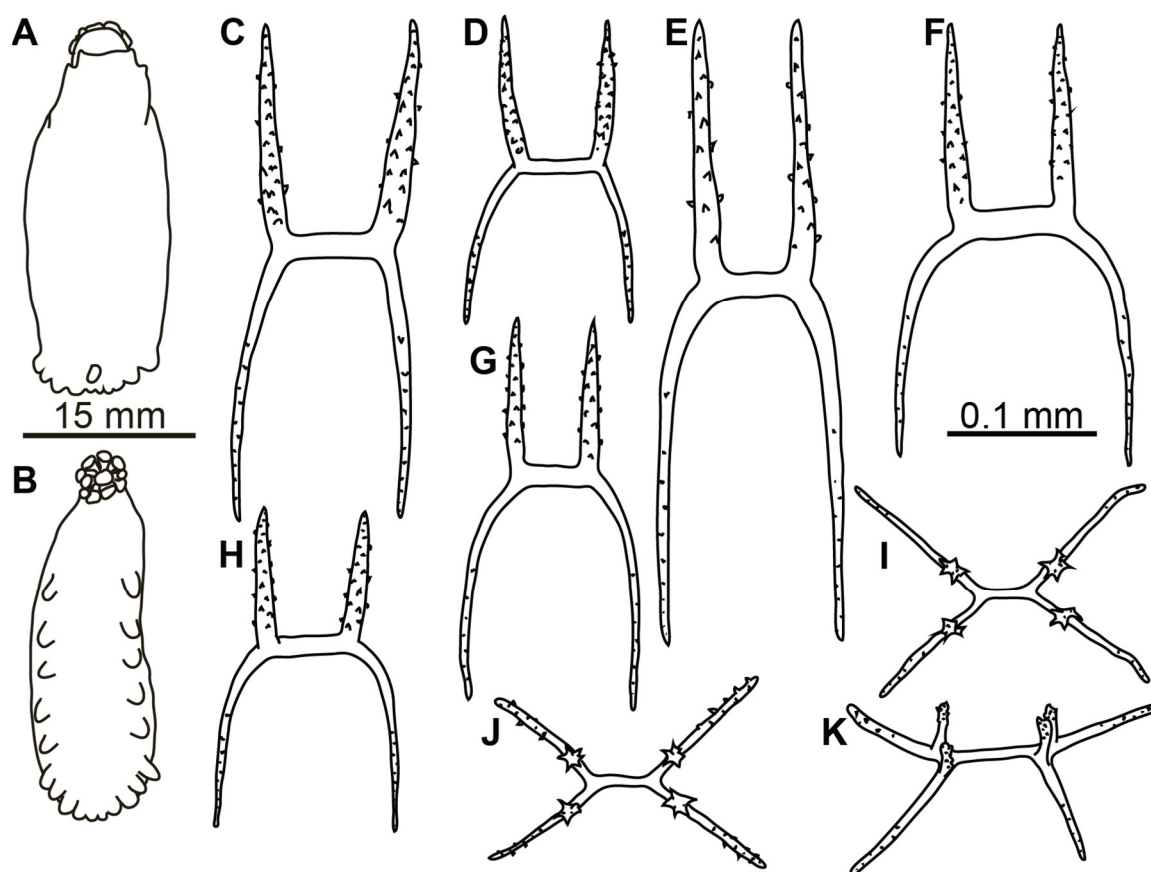


Figure 4. *Peniagone mus*. (A,B) RV Sonne, St. 03-10, dorsal and ventral view; (C–K) RV Sonne, St. 11-10, dorsal (C–H) and ventral (I–K) ossicles, scale 0.1 mm, a pair of arms omitted in dorsal ossicles.

Peniagone mus Djakonov, 1949: 68 [nomen nudum] [36].

Peniagone mus Djakonov, 1952: 122–124, Figures 7–10 [10].

Peniagone incerta (Théel)—Gebruk, 1990 (in Russian): 108–109 [partim.], Figure 42(8–11) [22].

Peniagone aff. *incerta*—Mironov et al., 2019: 11–12 [4].

Type material. Two syntypes ZIN 12313-1, RV *Severnij Polyus*, St. A, 25.07.1946, *Sigsbee* Trawl, 52.75° N, 161.68° E, 4100–4200 m, http://zin.ru/collections/Holothuroidea/specimen.html?Catalog_UID=1344281483486918 (accessed on 12.10.2021).

Material examined. (In addition to material listed in Mironov et al., 2019 [4]). Syn-type slide preparation of ventral ossicles; RV *Vityaz*, St. 956, 29.09.1951, *Sigsbee* Trawl, 55°11' N, 163°26' E, 4810–4990 m, 50 specimens (IORS ECH01101 and ECH01109); St. 3116, 28.08.1954, *Sigsbee* Trawl, 51°53.1' N, 161°49.6' E, 5803–5853 m, IORS ECH01949, 1 specimen; St. 3214, 24.10.1954, *Sigsbee* Trawl, 38°10.9' N, 143°56.2' E, 6156–6207 m, IORS ECH02008, 6 specimens; St. 4120, 05.11.1958, *Sigsbee* Trawl, 53°37' N, 159°40' E, 6328–6296 m, IORS ECH01287, 1 specimen; St. 5609, 23.07.1966, *Sigsbee* Trawl, 46°06' N, 153°18' E, 6090–6235 m, IORS ECH01243, 11 specimens; St. 5633, 06.09.1966, *Galathea* Trawl, 44°7' N, 149°34' E, 6156–6117 m, ~300 specimens (IORS ECH01227, ECH01230, ECH01248 and ECH01374[in formalin]); RV *Akademik M.A. Lavrentiev*, cruise 71 (SokhoBio), St. 10-07, 29.07 2015, Epibenthic sledge, 46°06.0'–46°05.8' N, 152°14.4'–152° 14.6' E, 4769–4798 m, 13 specimens; RV *Sonne*, cruise 223 (KuramBio), St. 03-10, 05.08.2012, Agassiz Trawl, 47°14.27'–47°14.94' N, 154°42.17'–154°43.18' E, 4977–4986 m, 16 specimens (ID KB301, KB302); St. 11-10, 30.08.2012, Agassiz Trawl, 40°13.33'–40°12.53' N, 148°06.48'–148°05.76' E, 5348–5347 m, 1 specimen (ID KB1416); RV *Sonne*, cruise 250 (KuramBio II), St. 18, 22.08.2016, Agassiz Trawl, 45°50.861'–45°51.954' N, 153°49.568'–153°51.259' E, 8200–8185 m, 3 specimens (ID KB2_428); St. 31, 28.08.2016, Agassiz Trawl, 45°56.688'–45°56.544' N,

152°52.785'–152°54.667' E, 6184.5–6220.6 m, IORAS ECH02146– ECH02148, ECH01808, ECH01812, ECH01813, 11 specimens; St. 86, 15.09.2016, Agassiz Trawl, 45°1.202' N, 151°6.008' E, 5572–5530 m, 6 specimens.

Diagnosis. Body elongated, approximately three times as long as wide. Colour in alcohol grey. Tube feet up to 10 pairs, present in the anterior 1/3 to 1/4 of the body, anteriormost five pairs free, others forming posterior lobe. Velum broad and short, formed by two pairs of papillae. Dorsal ossicles with strongly bent arms 0.1–0.3 mm long; apophyses two, rarely 1, 3 or 4, 0.09–0.2 mm long; apophyses and central stem thicker than arms. Ventral ossicles with arms 0.07–0.12 mm in length.

Material description. Body length up to 75 mm (Figures 3A,B and 4A,B). Ten tentacles. Anus dorsal. Skin rough owing to the dense layer of ossicles. Velum varying in size, depending on contraction at preservation; velum did not cover the anterior end of the body and tentacles in most preserved specimens, suggesting its relatively small size in live specimens. Free tips of papillae short in preserved state, <5 mm long, lost in most of the specimens. Dorsal ossicles (Figure 2J–L and 4C–H) with strongly bent arms, sometimes almost vertical, 0.08–0.25 mm long, rarely exceed 0.3 mm; apophyses usually two, rarely 3 or 4 and occasionally 1 apophysis can be found, apophyses almost vertical, 0.09–0.2 mm long in most ossicles. Apophyses usually slightly shorter than arms, although ossicles with much shorter apophyses also found (Figure 2L). Arms and apophyses spinous, on apophyses spines more conspicuous. In bigger ossicles apophyses usually long and straight located close to each other. Ventrally flatten *Peniagone*-type ossicles, with arms 0.07–0.12 mm in length, spines conspicuous; short spinous apophysis on each arm (Figures 2M and 4I–K). Calcareous ring pieces with 9–10 pairs of arms, which can be subdivided. Polian vesicle single.

Genetic data. See Table S1.

Distribution. Common in the Kuril–Kamchatka Trench area at abyssal and hadal depths, and also found in the Japan and Aleutian trenches (Figure 11). Depth range 4200–8200 m.

Remarks. Original description is based on three damaged specimens with upper layer of dorsal skin lacking, of which only two specimens are remain preserved. Djakonov [36] at first mentioned this species without describing any taxonomic characters significant at the species level. In the later description [10], details of external morphology and ventral ossicles were given. The dorsal ossicles illustrated in the original description on the Figure 10 apparently occur in the deeper skin layer and cannot be used for species identification. Our examined specimens were assigned to *P. mus* based on unique features of ventral ossicles illustrated by Djakonov [10].

Peniagone mus differs from other species of the genus by the type of dorsal ossicles with two apophyses clearly thicker than arms. *Peniagone mus* resembles *P. incerta* (Théel) in having five pairs of larger free tube feet, two of them located in the anterior body half and dorsal ossicles with nearly vertical apophyses straight and closely placed, usually two, rarely three or four. The re-examination of the syntype of *Elpidia incerta* Théel NHM 83.6.18.7 revealed remarkable variation in the morphology of dorsal ossicles in this species. Despite an obvious similarity in shape, ossicles of the syntype appeared significantly slender and smaller than in *P. mus*: arms and apophyses did not exceed 0.2 and 0.17 mm respectively, with most arms 0.1 mm in length.

Specimens from the northwest Pacific identified by Gebruk [22] as *P. incerta* were re-examined and found to belong to *P. mus* (except for the specimens from stations 2144 and 2208, apparently lost).

3.4. *Peniagone cf. purpurea* (Théel, 1882)

Figure 5A,B,F–M.

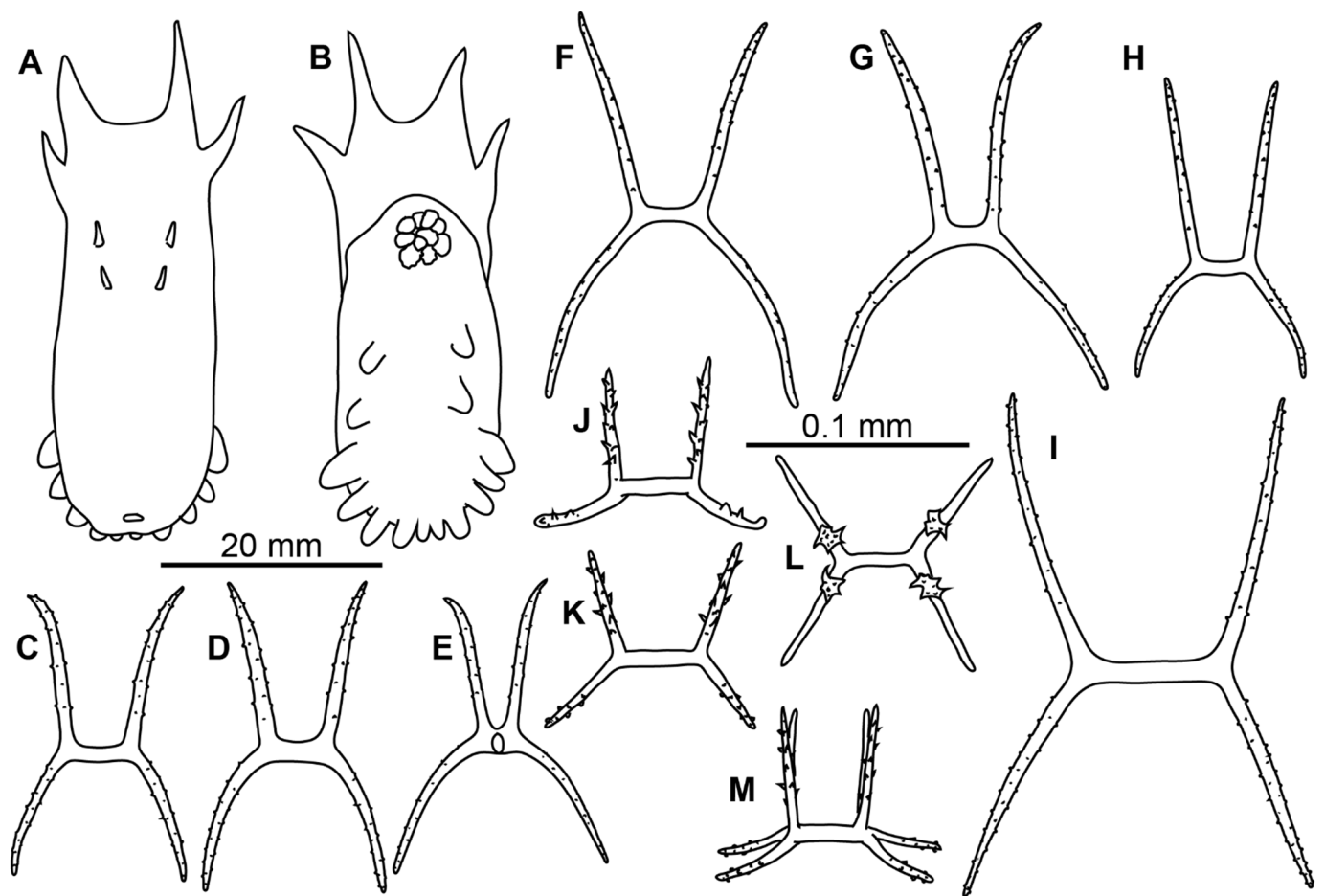


Figure 5. *Peniagone* cf. *purpurea*, RV *Sonne*, St. 01-13: (A,B) dorsal and ventral view, (F–I) dorsal ossicles, (J–M) ventral ossicles. (C–E), syntype of *Elpidia purpurea* NHM 83.6.18.4, dorsal ossicles. (C–M) scale 0.1 mm; pair of arms and apophyses omitted on (C–J).

Peniagone purpurea (Théel)—Gebruk, 1990 (in Russian): 111–113 (partim.), Figures 3–8 [22].

Material examined. RV *Vityaz*, St. 5620, 15.08.1966, 44°48' N, 156°33' E, 5045–5005 m, IORAS ECH02013, 4 specimens; RV *Sonne*, cruise 223 (KuramBio), St. 01-12, 30.07.2012, 43°58.19'–43°57.81' N, 157°19.11'–157°21.58' E, 5422–5379 m, IORAS ECH01811, 1 specimen (ID KB113); St. 01-13, 31.07.2012, 43°58.36'–43°58.26' N, 157°15.70'–157°14.60' E, 5427–5425 m, IORAS ECH01810, 2 specimens (ID KB83, KB96); St. 06-09, 14.08.2012, 42°29.25'–42°28.32' N, 154°00.05'–153°59.73' E, 5293–5307 m, 1 specimen (ID KB2080).

Additional material. Syntypes of *Elpidia purpurea* Théel, NHM 83.6.18.4 and NHM 83.6.18.5 (slide preparation of dorsal ossicles).

Material description. Specimens 16–40 mm in length, condition from poor to moderated. Body close to oval, flattened (Figure 5A,B). Ten big tentacles. Colour in alcohol from brownish to dark or black violet. Tube feet 7–9 pairs, missing in the anterior third of the body; first 2–3 pairs free, other tube feet forming posterior lobe. Velum large, long and wide, may exceed in length $\frac{1}{2}$ of the body length; free ends of velum papillae long. Two pairs of small papillae on dorsum behind velum. Dorsal ossicles (Figure 5F–I) with central stem of varying proportions—from $\frac{1}{3}$ of arm length to the same length with arms or even slightly longer; arms straight or slightly curved, arm length 0.05–0.12 mm, usually up to 0.1 mm. Apophyses four, longer than arms, but not exceeding 0.1 mm in length, apophyses slightly curved outwardly (Figure 5F,G), straight (Figure 5H) or inwardly curved (Figure 5I). Ventral ossicles (Figure 5J–M) with arms curved outwards (Figure 5J,L) or straight (Figure 5K), arm length about 0.05 mm; apophyses four, longer than arms, about 0.07 mm in length. Arms and apophyses spinous both in dorsal and ventral ossicles. Calcareous

ring pieces with 7 pairs of arms, which can be subdivided. Some of the arms are multiply branched at their ends. Polian vesicle single.

Genetic data. See Table S1.

Distribution. Five records in the Kuril–Kamchatka Trench area and on abyssal plain east of the trench. Depth 5005–5427 m.

Remarks. By external morphology, examined specimens corresponded well to the original description of *Peniagone purpurea* in colour, shape of the body, velum morphology, tube feet and dorsal papillae number and arrangement. Re-examination of the syntypes of *Elpidia purpurea* NHM 83.6.18.4 and NHM 83.6.18.5 revealed some differences between them and our specimens in the dorsal ossicle morphology. In the syntypes, apophyses were curved outwardly in most of dorsal ossicles (Figure 5C–E), whereas in the northwest Pacific specimens they were either straight or curved inward. Additionally, ossicles of the syntypes were smaller: arms up to 0.08 mm and apophyses up to 0.07 mm. However, ossicle size and shape of apophyses in the northwest Pacific specimens varied between the stations. Specimens from St. 5620 had the biggest ossicles with arms up to 0.12 mm and apophyses up to 0.1 mm. The apophyses in most ossicles were placed more widely and slightly curved inwardly, although few ossicles with apophyses curved outwardly were also present. In the northwest Pacific specimens from other stations the arm length of ossicles was <0.1 mm long and apophyses were straight or outwardly curved. The variation in dorsal ossicles of *P. purpurea* requires further studies, therefore at present we identify our specimens as *Peniagone cf. purpurea*.

3.5. *Peniagone saveljevae* Kremenetskaia et Gebruk sp. nov.

Figures 3C,D, 6 and 7.

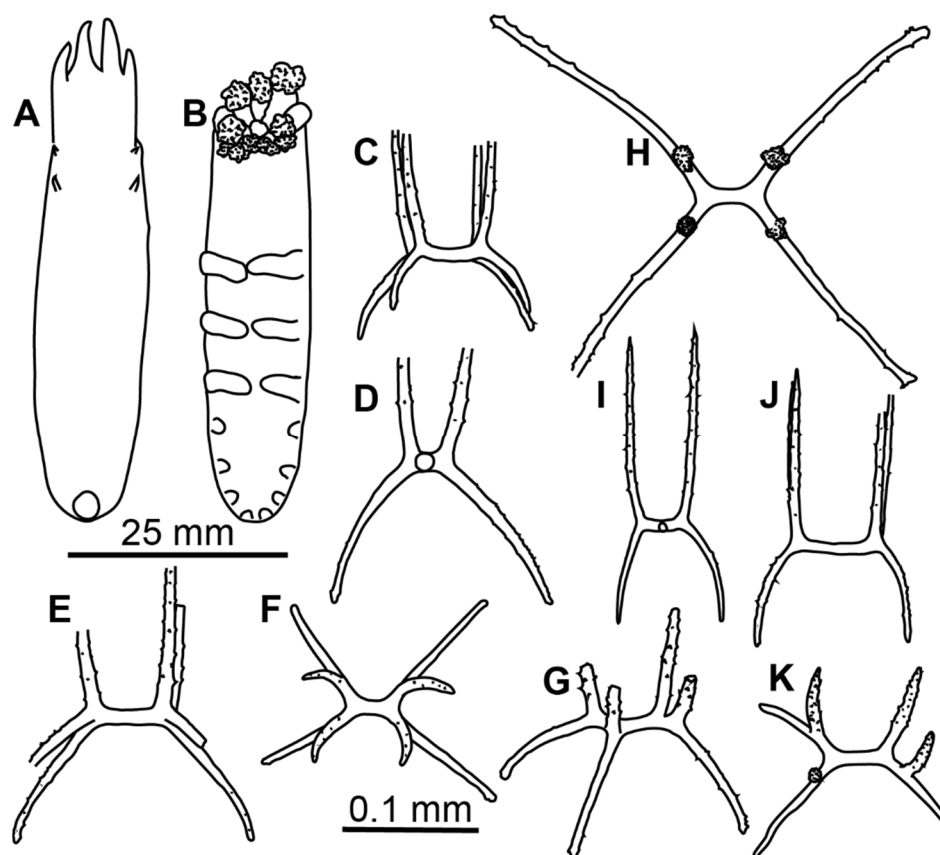


Figure 6. *Peniagone saveljevae* sp. nov., paratype: (A,B) dorsal and ventral view; (C–G), dorsal ossicles; (I–K) ventral ossicles.

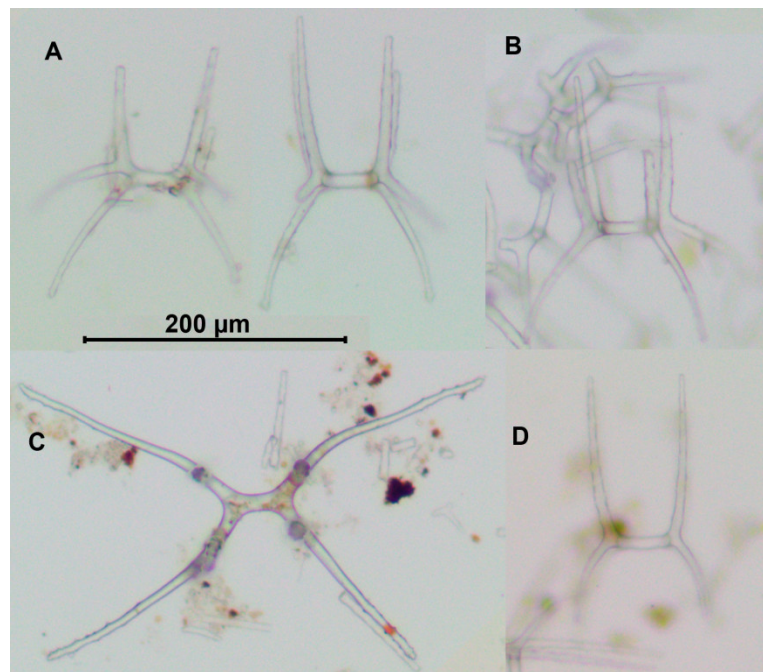


Figure 7. *Peniagone saveljevae* sp. nov., paratype: (A,B) dorsal ossicles; (C,D) ventral ossicles.

Holotype. Specimen 60 mm, RV *Akademik M.A. Lavrentiev*, cruise 71 (SokhoBio), St. 01-11, 11.07.2015, Agassiz Trawl, 46°09.047'–46°08.738' N, 146°00.789'–145°59.512' E, 3305–3304 m. The specimen will be deposited at MIMB, currently stored at IORAS, Cat. Nr ECH02165.

Paratypes. 3 specimens 45–50 mm in length, collected at the same station as the holotype. Paratypes will be deposited at SGN, currently stored at IORAS, Cat. Nr ECH02164 and ECH02151.

Diagnosis. Body elongated, approximately 3–4 times as long as wide. Color in alcohol grey. Tube feet up to ~8 pairs, missing in the anterior 1/3 of the body. Velum broad and short, formed by two pairs of papillae. Two pairs of small papillae behind velum. Dorsal ossicles with curved arms up to 0.15 mm long; apophyses four, up to 0.12 mm long; apophyses slightly thicker than arms. Ventral ossicles with curved arms 0.07–0.1 mm in length and four apophyses longer than arms, up to 0.14 mm, or with more horizontal arms up to 0.2 mm.

Material description. Body strongly elongated (Figures 3C,D and 6A,B). Skin rather thick, almost non-transparent in preserved state. Ambulacral appendages and tentacles are mostly lost, few tube feet are preserved in the paratype, IORAS ECH02151. In the latter only 7 pairs of tube feet are present, however some small posteriormost tube feet might have been lost. Arms and apophyses of dorsal ossicles spinous; spines on apophyses more numerous (Figures 6C–G and 7A,B). Apophyses in dorsal ossicles of the same length with arms or slightly shorter (in ossicles with widely spaced arms); arms usually ~0.1 mm long. Apophyses always four, slightly curved inward. Ventral ossicles (Figures 6I–K and 7C,D) usually of the same shape as dorsal but slenderer and smaller in size, with arms usually <0.1 mm long and apophyses slightly longer or equal in length with arms. Occasionally present flatten *Peniagone*-type ossicles, with four short apophyses or sometime with no apophyses. Polian vesicle single.

Genetic data. See Table S1.

Etymology. The species is named in honor of Tatyana Sergeevna Saveljeva (1902–1982), a Soviet zoologist and expert on Holothuroidea.

Distribution. The species is known only from the type locality in the southern part of the Sea of Okhotsk.

Remarks. *Peniagone saveljevae* resembles *P. dubia* and *P. mus* in external morphology within the group of the northwest Pacific species, however it differs by the absence of tube feet in the anteriormost third or fourth of the body and small velum. The tube feet in the anterior half of the body is a common feature in *Peniagone* occurring in *Peniagone islandica* Deichmann, *P. azorica* von Marenzeller, *P. willemoesi* (Théel), *P. herouardi* Gebruk, *P. vedeli* Hansen and other species. This type of morphology suggests more epibenthic lifestyle. *Peniagone saveljevae* also differs by the dorsal ossicles with four apophyses and curved arms up to 0.15 mm long.

3.6. *Peniagone vitrea* Théel, 1882

Figure 8A–C.

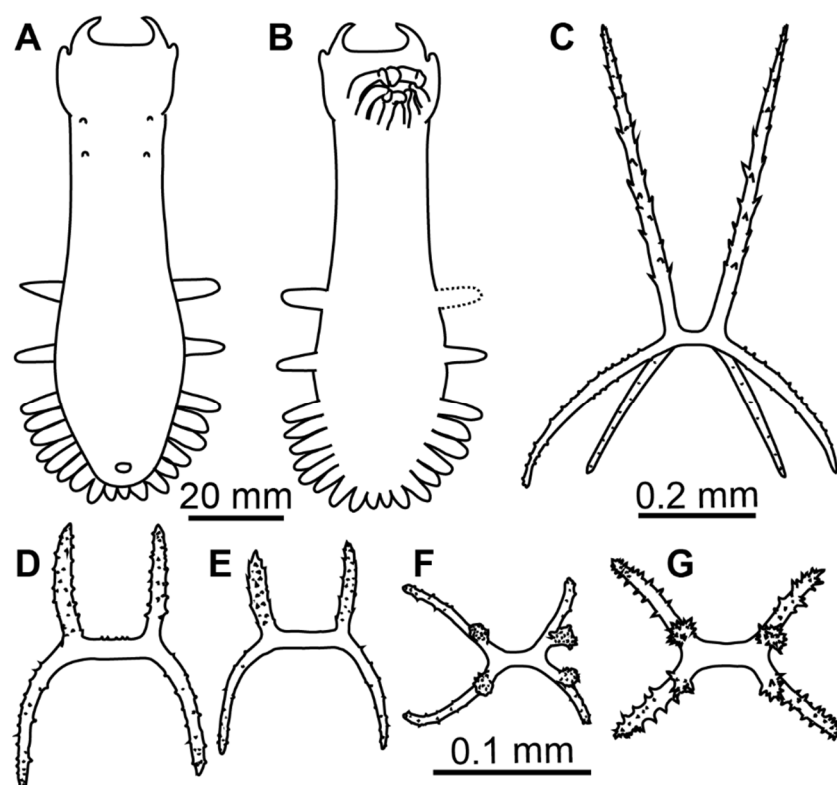


Figure 8. *Peniagone vitrea* (A–C) and *Peniagone* sp. “miniatura” (D–G). (A–C), RV *Vityaz*, St. 5603. (A,B) dorsal and ventral view; (C) dorsal ossicle, scale 0.2 mm. (D–G) RV *Sonne*, St. 6–9, dorsal (D–F) and ventral (G) ossicles, scale 0.1 mm.

Peniagone vitrea Théel, 1882: 50–52, Plates VII(7–9), XXXIV(17–18), XLIV(10) [5]; Hansen, 1975: 148–150, Figure 70 [synonymy] [24]; Gebruk, 1990 (in Russian): 93–94, Figure 34(4–9) [synonymy] [22]; O’Loughlin, 1998: 504 [37].

Peniagone vitrea var. *setosa* Ludwig, 1893: 109; 1894: 105–108 [38].

Peniagone setosa Ludwig–Clark, 1920: 136 [39].

Material examined. RV *Vityaz*, St. 5603, 15.07.1966, *Sigsbee* Trawl, 46°22’ N, 153°3’ E, 3175–3250 m, IORAS ECH01201, 3 specimens; St. 5635, 08.09.1966, *Galathea* Trawl, 44°24’ N, 149°10’ E, 3900–4135 m, IORAS ECH00236, 14 specimens and fragments.

Genetic data. No genetic data is available for examined specimens.

Distribution. Type locality is off southern Chile at the depth 2652 m (1450 fathoms), *Challenger*, St. 302. Other confirmed records are in the Eastern and Central Pacific, off Australia, and Antarctic (Figures 11 and 12). The new records are from the northwest Pacific, Kuril–Kamchatka Trench area. Depth range 1360–4507 m. There are also about ~30 records published in GBIF.org [40] from the Eastern Pacific, off Australia and New Zealand identified by P.M. O’Loughlin, N. Davey and D. Pawson.

Remarks. *Peniagone vitrea* currently has two junior synonyms: *P. vitrea* var. *setosa* Ludwig and *P. setosa* Ludwig. Hansen [24] has re-examined the type series of *P. vitrea* and found pronounced variation in ossicle size among the types of the synonymized species and the specimens from the Central and East Pacific reported by Clark [39] and from *Galathea* St. 716. The biggest ossicles were in the *Galathea* specimen with the arms reaching 0.7 mm in length whereas in the type specimens the arms were 0.3–0.5 mm long. In our specimens from the northwest Pacific the arms in the dorsal ossicles (Figure 8C) attained 0.4 mm, with 2–4 apophyses, rather straight, longer than arms and spinous. External morphology of these specimens (Figure 8A,B) corresponded well to that in the original description of the species. The body was strongly elongated, velum lobe broad and short, tube feet bordering from posterior half to one third of the body and forming broad posterior lobe.

3.7. *Peniagone* sp. “miniatura”

Figure 8D–G.

Material examined. RV *Sonne*, cruise 223 (KuramBio), St. 6–9, 14.08.2012, *Agassiz* Trawl, 42°29.25′–42°28.32′ N, 154°00.05′–153°59.73′ E, 5293–5307 m, IORAS ECH01809, 1 specimen.

Material description. Body 65 mm long, elongated, approximately three times as long as wide. Color in alcohol greyish. Dorsal velum long, may exceed in length 1/3 that of the body; papillae free at most of their length. Tube feet ~11 pairs, present in anterior 1/3 of the body; six pairs free, posterior five pairs closely placed; tube feet mostly lost, their arrangement can be determined based on ampullae position. Dorsal ossicles (Figure 8D–F) rare, with arms almost straight or slightly curved, arm length 0.09–0.11 mm. Apophyses four (rarely three), shorter than arms, 0.05–0.06 mm in length. Arms and apophyses bare small spines. Central stem slightly shorter than apophyses or of similar length. Ventral ossicles (Figure 8G) with straight arms 0.06–0.08 mm in length, arms slightly curved horizontally and/or vertically to varying degree; apophyses short, <1/2 of the arm length. Arms and apophyses spinous.

Genetic data. See Table S1. Genetic data on both COI and 16S shows very small difference between *Peniagone* sp. “miniatura” and *P. mus*, up to 2.5%. It can be suggested that the observed morphological and genetic differences are related to an ongoing speciation process.

Remarks. This possibly new species has distinctive features of the ossicles, but in external morphology it is very similar to *P. mus*. Dorsal ossicles in *Peniagone* sp. “miniatura” are much smaller, mostly with four apophyses which do not form a dense layer in the skin.

4. Phylogeny

Peniagone was recovered monophyletic in both COI and 16S analyses as well as in concatenated dataset analysis with PP = 1.0 (Figure S1). COI tree (Figure 9) included six previously described species (*P. cf. purpurea*, *P. diaphana*, *P. coccinea*, *P. vignoni*, *P. incerta* and *P. islandica*) that were either recovered monophyletic (PP = 1.00) or were represented by a single specimen. *Peniagone cf. purpurea* was one of the most basal species with COI p-distance to other *Peniagone* species varying from 18.2 to 24.5%. *Peniagone mus* was sister with *Peniagone* sp. “miniatura” with PP = 0.99. The COI p-distance between these clades was 2.5%, whereas it varied from 5 to 26% between other species clades. The clade of *P. mus* did not form sister relationships with the morphologically similar Antarctic species *P. incerta* to which the specimens of *P. mus* were previously assigned.

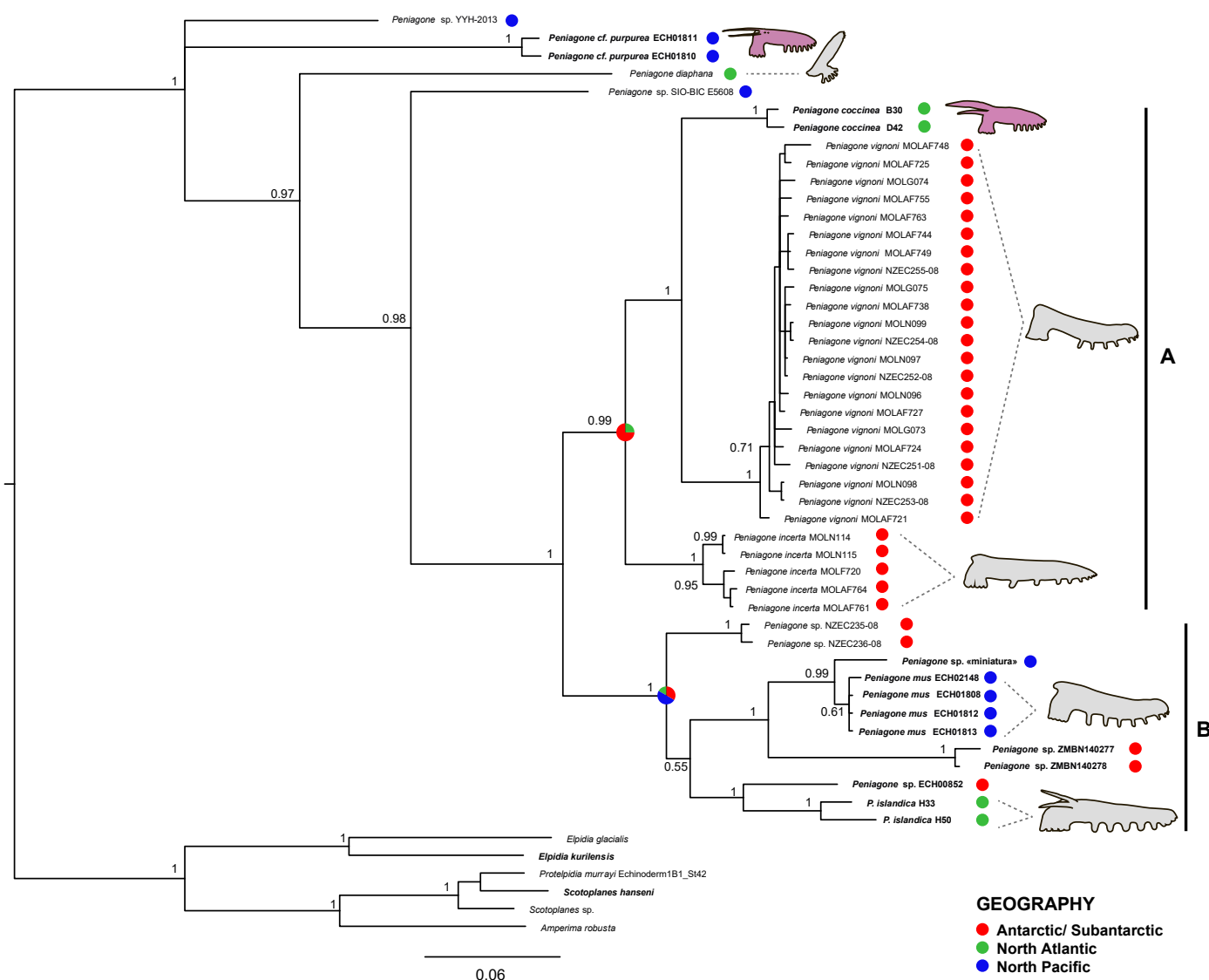


Figure 9. Bayesian phylogenetic tree inferred from mtDNA COI sequences. Sequences obtained in this study are in bold. Node numbers are posterior probabilities. NZEC2XX-08 correspond to BOLD process ID numbers. Holothurian pictograms are colored according to the color of preserved specimens.

16S tree (Figure S1) included six previously described species (*P. cf. purpurea*, *P. leander*, *P. diaphana*, *P. azorica* and *P. islandica*) however was generally much less resolved. Furthermore, *P. azorica* and *P. islandica* were not recovered as monophyletic species. Similarly to the COI tree, a clade composed of *P. mus* and *P. sp. «miniatura»* was recovered with PP = 0.94. 16S p-distances showed 0.7% difference between *P. mus* and *Peniagone sp. «miniatura»*, whereas it varied from 0.4% to 12.8% between the other species. *Peniagone saveljevae* was only present as a single specimen in 16S tree showing no close relationships to any of the other species in the analysis.

Analysis of the concatenated COI and 16S matrix included nine previously described species although as in 16S tree *P. islandica* and *P. azorica* did not form monophyletic clades. Nevertheless, the topology of the recovered tree was generally similar to the one from the COI analysis with slightly lower support in most of the nodes. Similar to the COI tree, *P. cf. purpurea*, *P. diaphana* and two unidentified *Peniagone* species (*Peniagone sp. YYH-2013* and *Peniagone sp. SIO-BIC E5608*) appeared in the basal part of the tree and the rest of the species were split into two large sister clades A and B (PP = 0.89) (Figure 10). Additionally, *P. leander* lacking COI sequence data was recovered as sister to *P. diaphana* (PP = 0.93) similar to the 16S tree (Figure 10).

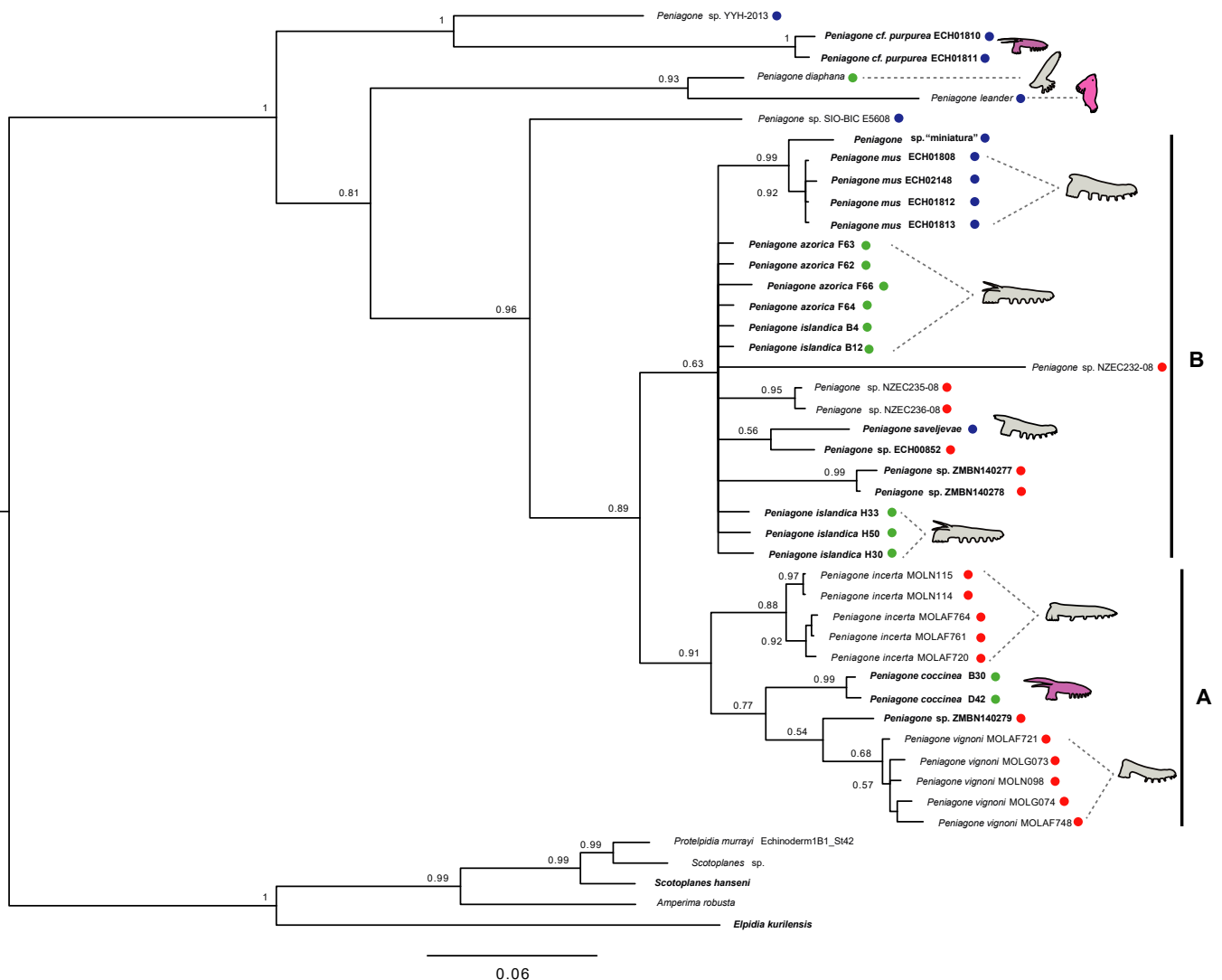


Figure 10. Bayesian phylogenetic tree inferred from concatenated mtDNA COI and 16S RNA sequences. Sequences obtained in this study are in bold. Node numbers are posterior probabilities. NZEC2XX-08 correspond to BOLD process ID numbers. Holothurian pictograms are colored according to the color of preserved specimens. Colored circles correspond to geographical locations as on Figure 9.

In all three trees, the basal-most species were reported from the North Pacific (*P. cf. purpurea*, *Peniagone* spp., *P. leander*) and the North Atlantic (*P. diaphana*), while the terminal clades (A and B) also included all the Antarctic species. The North Pacific species included in the present study (*P. cf. purpurea*, *P. mus* and *P. saveljevae*) did not show close relationship to each other appearing in the different larger clades on the phylogenetic trees. Occasionally swimming forms [3] were mostly found within the terminal clades A and B (Figures 9 and 10) although morphology of *Peniagone* sp. YYH-2013 and *Peniagone* sp. SIO-BIC E5608 specimens was not reported in the open sources and thus was not scored in the present study. Notably, two species with large velum and bright coloration, *P. cf. purpurea* and *P. coccinea* did not form sister relationships on the obtained phylogenetic trees (Figures 9 and 10).

5. Discussion

According to previously published records and our results, the northwest Pacific fauna of the genus *Peniagone* includes at least seven species: *P. dubia*, *P. japonica*, *P. mus*, *P.*

minuta, *P. cf. purpurea*, *P. saveljevae* and *P. vitrea*. The northwest Pacific *Peniagone* sp. “*miniatura*” can also represent a separate species or a case of ongoing speciation within *P. mus*. Although genetically it is very close to *P. mus*, the differences in the ossicle morphology between the two potential species are remarkable. A similar case was described by Elgetany et al. [41] as a grey zone of speciation in the two polychaete species, *Diopatra aciculata* Knox et Cameron and *D. neapolitana* Delle Chiaje. Although some statistical differences were found in several morphological characters, these species displayed low genetic distances: up to <0.0359 for COI data and <0.00028 for 16S.

All the examined species are not known outside the northwest Pacific except for *P. vitrea* (Figures 11 and 12). The latter is the example of a widespread species occurring widely in the Pacific with one record in the Pacific sector of the Antarctic. Morphological differences suggest separation of the northwest Pacific *Peniagone cf. purpurea* from *Peniagone purpurea* described from the southern Indian Ocean. Some genetic evidence also point on that *P. purpurea* might represent a species complex. Six sequences of *P. purpurea* obtained from the Antarctic specimens are deposited in the BOLD database [42]. According to the scheme of abyssal biogeography of Vinogradova [43], these specimens were collected from one biogeographic subregion including the type locality of *P. purpurea*. Although these sequences are stored privately and are not currently available for phylogenetic analysis, they do not cluster under the same Barcode Index Number (BIN) with the northwest Pacific *P. cf. purpurea* from the present study (BOLD: AEI4563) indirectly suggesting they might not be conspecific. Furthermore, the nearest neighbor BIN (BOLD: ABA3279) comprising these Antarctic specimens shows 7.53% p-distance in COI with the northwest Pacific bin which corresponds to the level of genetic distances between other *Peniagone* species.

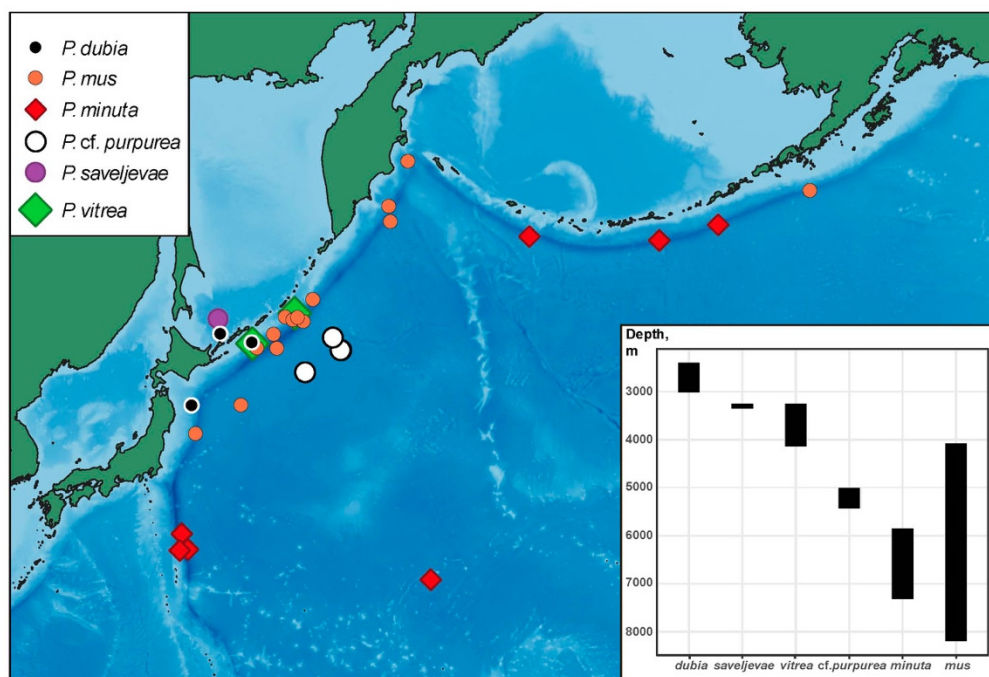


Figure 11. Geographic distribution and bathymetric range of the examined species in the northwest Pacific.

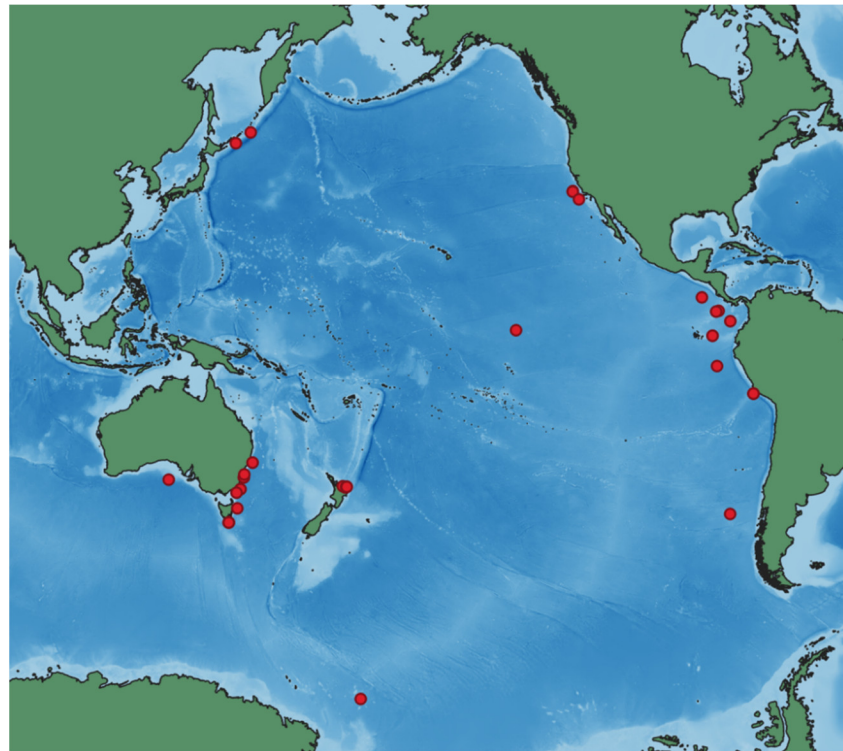


Figure 12. Global distribution of *Peniagone vitrea*.

Most northwest Pacific species are distributed in a relatively narrow depth range (Figure 11) although this can be partly explained by the low number of specimens collected from the deep sea. The shallowest species is *P. dubia* inhabiting the lower bathyal (~2500–3000 m). *Peniagone saveljevae* occurs in the upper abyssal (~3300 m) in the Sea of Okhotsk. *Peniagone vitrea* in the northwest Pacific is known from the upper to mid-abyssal (~3200–4100 m) although it occurs in a slightly wider range in other areas (~1300–4500 m). *Peniagone* cf. *purpurea* is the lower abyssal species (~5300 m). *Peniagone mus* and *P. minuta* are the only two species occurring in the hadal in trenches. *Peniagone minuta* was repeatedly found in the Aleutian and Izu–Bonine trenches as well as on the abyssal plain. *Peniagone mus* is the deepest and the most eurybathic species (4200–8200 m) among the northwest Pacific *Peniagone*. It is mainly known from the Kuril–Kamchatka Trench and adjacent abyssal areas, with single records in the Aleutian and Japan trenches.

Surprisingly, *Peniagone* is absent in the relatively well studied Bering Sea. It can be explained by possible interspecies interactions. Rybakova et al. [44] showed the abyssal community in the Bering Sea being dominated by another elpidiid species, *Kolga kamchatिका* Rogacheva. The latter may occupy the same trophic niche as *Peniagone* replacing *Peniagone* species in the Bering Sea.

No clear geographic affinity was revealed for the main clades within *Peniagone* according to molecular data (Figures 9 and 10). The northwest Pacific species appeared not closely related. Following more resolved COI tree (Figure 9), *P. mus* is the closest to the Antarctic species *Peniagone* sp. ZMBN140277 and ZMBN140278 whereas west Pacific *P.* cf. *purpurea* and *Peniagone* sp. YYH-2013 [unpublished], and east Pacific *Peniagone* sp. SIO-BIC E5608 [45] are placed distantly from all other species. The same pattern was revealed for the Atlantic species, *P. diaphana* from northeast Atlantic [45], and *P. coccinea* and *P. islandica* from the northern Mid-Atlantic Ridge. The Atlantic *P. azorica* and *P. islandica* are closely related species, which are almost indistinguishable by external morphological features, but differ in dorsal ossicle morphology [3]. Analysis of their 16S, 18S, 28S rRNA and histone H3 sequences, showed clear separation of these species only in H3 data which may indicate ongoing speciation (CA, unpublished data). The Antarctic species, several of which were unidentified, were located only in terminal clades and absent in the basal

part of the tree (Figures 9 and 10). However, our data represent only a fraction of *Peniagone* diversity and obtaining genetic data for other species worldwide may change the picture.

Rogacheva et al. [3] described several adaptive forms within the genus *Peniagone* with different swimming abilities. Occasionally swimming forms possess more tube feet bordering most of the body and small velum and tentacles which apparently facilitate “walking” mode of life. In more active swimmers the number of tube feet is reduced and velum is either large as in *P. coccinea*, or reduced as in *P. diaphana*, *P. leander* and *P. minuta*.

Forms that are proposed to be occasionally swimming, such as *P. islandica*, *P. mus*, *P. incerta* and others, are present in terminal clades A and B (Figures 9 and 10). However, they can potentially be also found among more basal taxa depending on the external morphology (yet unknown) in *Peniagone* sp. SIO-BIC E5608 and *Peniagone* sp. YYH-2013. More advanced swimmers bearing large velum and lacking tube feet in the anterior body half such as *P. diaphana* and *P. cf. purpurea* occur in two separate clades suggesting their independent evolution. The species with almost completely reduced tube feet and very modified body shape presumably with predominantly pelagic life style, *P. diaphana* and *P. leander*, are closely related following our molecular data. Nevertheless, since the external morphology is not well described for some species in our analysis, and many species of the genus lack genetic data, the analysis of evolution of characters adaptive to swimming based on the obtained phylogenetic tree appears preliminary.

Supplementary Materials: The following are available online at www.mdpi.com/article/10.3390/d13110541/s1, Table S1: Specimen list with GenBank Accession numbers and data on their sampling, storage and sequences. Table S2: List of sequences obtained from GenBank and BOLD. Figure S1. Bayesian phylogenetic tree inferred from mtDNA 16S rDNA sequences. Sequences obtained in this study are in bold. Node numbers are posterior probabilities.

Author Contributions: Conceptualization, A.K. and A.G.; morphology, A.K. and A.G.; molecular lab work, A.K., C.H.S.A. and N.B.; phylogenetic analysis, A.K. and N.B.; writing, A.K., A.G. and N.B.; illustrations, A.K. All authors have read and agreed to the published version of the manuscript.

Funding: The research was funded by the Ministry of Science and Higher Education, Russian Federation, grant number 13.1902.21.0012, contract number 075-15-2020-796.

Institutional Review Board Statement: Not applicable.

Data Availability Statement: Sequences obtained in this study are uploaded to GenBank and BOLD (Table S1). Specimen records are published on GBIF [23].

Acknowledgments: We thank Angelika Brandt, Marina Malyutina, Kirill Minin, captains and crew of all three German-Russian cruises as well as benthic invertebrate teams involved in collecting and preservation of samples. We would like to thank Anne Helene Solberg Tandberg for collecting Antarctic holothurians during the R/V *Kronprins Haakon* Expedition to Kong Håkon VII Hav 2019, and Imants Priede and scientific and technical team of the ECOMAR project for collecting samples in the North Atlantic. We are very grateful to Louise Lindblom for her great help and assistance in the DNA lab (University of Bergen), Jon Kongsrud and Katrine Kongshavn for providing specimens for genetic analysis. Examination of the Antarctic collections and molecular works at the University of Bergen was supported via the Cooperation Programme between Norway and Russia “Multidisciplinary Education and reSearch in mArine biology in Norway and Russia” (MEDUSA), the Norwegian Agency for International Cooperation and Quality Enhancement in Higher Education. We also thank Andrew Cabrinovic and David and Doris Pawson for their help during the stay at NHM and NMNH.

Conflicts of Interest: The authors declare no conflict of interest.

References

1. WoRMS. *Peniagone* Théel. 1882. Available online: <http://www.marinespecies.org/aphia.php?p=taxdetails&id=123515> (accessed on 28 April 2021).
2. Gebruk, A.V.; Smirnov, A.V.; Rogacheva, A.V. Holothuroidea. In *Deep-Sea Fauna of European Seas: An Annotated Species Checklist of Benthic Invertebrates Living Deeper than 2000 m in the Seas Bordering Europe*; Gebruk, A.V., Thiel, H., Thurston, M.H., Eds.; *Invert. Zool.* **2014**, *11*, 156–180.

3. Rogacheva, A.; Gebruk, A.; Alt, C.H.S. Holothuroidea of the Charlie-Gibbs Fracture Zone area, northern Mid-Atlantic Ridge. *Mar. Biol. Res.* **2013**, *9*, 587–623.
4. Mironov, A.N.; Dilman, A.B.; Gebruk, A.V.; Kremenetskaia, A.V.; Minin, K.V.; Smirnov, I.S. Echinoderms of the Kuril-Kamchatka Trench. *Prog. Oceanogr.* **2019**, *179*, 102217, <https://doi.org/10.1016/j.pocean.2019.102217>.
5. Théel, H. Report on Holothurioidea. Part I. *Rep. Sci. Results Voyag. H.M.S. Challenger. Zool.* **1882**, *4*, 1–176.
6. Mitsukuri, K. Studies on Actinopodous Holothurioidea. *J. Coll. Sci. Tokyo Imp. Univ.* **1912**, *29*, 1–284.
7. Ohshima, H. Report on the Holothurians Collected by the United States Fisheries Steamer *Albatross* in the Northwestern Pacific during the Summer of 1906. *Proc. US Natl. Mus.* **1915**, *48*, 213–291.
8. Saveljeva, T. On the holothurian fauna of the Japan and Okhotsk Seas. *Issled. Daln. Morej SSSR* **1933**, *19*, 37–58.
9. Saveljeva, T.S. On the holothurian fauna of the USSR Far Eastern Seas. *Issled. Daln. Morej SSSR* **1941**, *1*, 73–103.
10. Djakonov, A.M. Echinoderms from abyssal depths in the waters around Kamtchatka. *Issled. Daln. Morej SSSR* **1952**, *3*, 116–130.
11. Djakonov, A.M.; Baranova, Z.I.; Saveljeva, T.S. Notes on the Holothuroidea of the southern Sakhalin and South Kurile Islands area. *Issled. Daln. Morej SSSR* **1958**, *5*, 358–380.
12. Baranova, Z.I. Echinoderms of the Bering Sea. *Issled. Daln. Morej SSSR* **1957**, *4*, 149–266.
13. Belyaev, G.M. Ultra-abyssal holothurians of the genus *Myriotrochus* (Order Apoda, Fam. Myriotrochidae). *Tr. Instituta Okeanol.* **1970**, *86*, 458–486.
14. Belyaev, G.M.; Mironov, A.N. The holothurians of the family Myriotrochidae (Apoda): Composition, Distribution and Origin. *Tr. Instituta Okeanol.* **1982**, *117*, 81–120.
15. Belyaev, G.M. Deep-sea holothurians of the genus *Elpidia*. *Tr. Instituta Okeanol. AN SSSR* **1971**, *92*, 326–367.
16. Rogacheva, A. Taxonomy and distribution of the genus *Kolga* (Elpidiidae: Holothuroidea: Echinodermata). *J. Mar. Biol. Assoc. UK* **2012**, *92*, 1183–1193, <https://doi.org/10.1017/S0025315411000427>.
17. Gebruk, A.V.; Kremenetskaia, A.; Rouse, G.W. A group of species “*Psychropotes longicauda*” (Psychropotidae, Elasipodida, Holothuroidea) from the Kuril-Kamchatka Trench area North-West Pacific. *Prog. Oceanogr.* **2020**, *180*, 102222, <https://doi.org/10.1016/j.pocean.2019.102222>.
18. Brandt, A.; Malyutina, M.V. The German–Russian deep-sea expedition KuramBio (Kurile Kamchatka Biodiversity Studies) on board of the RV *Sonne* in 2012 following the footsteps of the legendary expeditions with RV *Vityaz*. *Deep Sea Res. Part II Top. Stud. Oceanogr.* **2015**, *111*, 1–9, <https://doi.org/10.1016/j.dsr2.2014.11.001>.
19. Malyutina, M.V.; Chernyshev, A.V.; Brandt, A. Introduction to the SokhoBio (Sea of Okhotsk Biodiversity Studies) expedition 2015. *Deep Res. Part II Top. Stud. Oceanogr.* **2018**, *154*, 1–9, <https://doi.org/10.1016/j.dsr2.2018.08.012>.
20. Brandt, A.; Brix, S.; Riehl, T.; Malyutina, M. Biodiversity and biogeography of the abyssal and hadal Kuril-Kamchatka Trench and adjacent NW Pacific deep-sea regions. *Prog. Oceanogr.* **2020**, *181*, 102232, <https://doi.org/10.1016/j.pocean.2019.102232>.
21. Mironov, A.N.; Minin, K.V.; Kremenetskaia, A.V. Two new genera of the family Myriotrochidae (Echinodermata, Holothuroidea). *Prog. Oceanogr.* **2019**, *178*, 102195, <https://doi.org/10.1016/j.pocean.2019.102195>.
22. Gebruk, A.V. *Deep-Sea Holothurians of the Elpidiidae Family*; Nauka: Moskva, Russia, 1990.
23. Kremenetskaia, A.; Gebruk, A. Holothurians of the Genus *Peniagone* (Elasipodida: Elpidiidae) from the Northwest Pacific Ocean. Shirshov Institute of Oceanology, Russian Academy of Sciences. Occurrence Dataset. 2021. Available online: <https://doi.org/10.15468/s2vncb> (accessed on 7 July 2021).
24. Hansen, B. Systematics and biology of the deep-sea holothurians. *Galathea Rep.* **1975**, *13*, 1–262.
25. Arndt, A.; Marquez, C.; Lambert, P.; Smith, M.J. Molecular phylogeny of eastern Pacific sea cucumbers (Echinodermata: Holothuroidea) based on mitochondrial DNA sequence. *Mol. Phylogenet. Evol.* **1996**, *6*, 425–437, <https://doi.org/10.1006/mpev.1996.0091>.
26. Folmer, O.; Black, M.; Hoeh, W.; Lutz, R.; Vrijenhoek, R. DNA Primers for amplification of mitochondrial cytochrome C oxidase subunit I from diverse metazoan invertebrates. *Mol. Mar. Biol. Biotechnol.* **1994**, *3*, 294–299.
27. Hoareau, T.B.; Boissin, E. Design of phylum-specific hybrid primers for DNA barcoding: Addressing the need for efficient COI amplification in the Echinodermata. *Mol. Ecol. Resour.* **2010**, *10*, 960–967, <https://doi.org/10.1111/j.1755-0998.2010.02848.x>.
28. Layton, K.K.S.; Corstorphine, E.A.; Hebert, P.D.N. Exploring Canadian Echinoderm diversity through DNA barcodes. *PLoS ONE* **2016**, *11*, e0166118, <https://doi.org/10.1371/journal.pone.0166118>.
29. Palumbi, S.R. *The Simple Fool's Guide to PCR*; Department of Zoology and Kewalo Marine Laboratory, University of Hawaii: Honolulu, HI, USA, 1991.
30. Priede, I.G.; Bergstad, O.A.; Miller, P.I.; Vecchione, M.; Gebruk, A.; Falkenhaus, T.; Billett, D.S.M.; Craig, J.; Dale, A.C.; Shields, M.A.; et al. Does Presence of a Mid-Ocean Ridge Enhance Biomass and Biodiversity? *PLoS ONE* **2013**, *8*, e61550, <https://doi.org/10.1371/journal.pone.0061550>.
31. Kumar, S.; Stecher, G.; Tamura, K. MEGA7: Molecular Evolutionary Genetics Analysis Version 7.0 for Bigger Datasets. *Mol. Biol. Evol.* **2016**, *33*, 1870–1874, <https://doi.org/10.1093/molbev/msw054>.
32. Lanfear, R.; Frandsen, P.B.; Wright, A.M.; Senfeld, T.; Calcott, B. PartitionFinder 2: New methods for selecting partitioned models of evolution for molecular and morphological phylogenetic analyses. *Mol. Biol. Evol.* **2017**, *34*, 772–773, <https://doi.org/10.1093/molbev/msw260>.
33. Ronquist, F.; Teslenko, M.; van der Mark, P.; Ayres, D.L.; Darling, A.; Höhna, S.; Larget, B.; Liu, L.; Suchard, M.A.; Huelsenbeck, J.P. MrBayes 3.2: Efficient Bayesian phylogenetic inference and model choice across a large model space. *Syst. Biol.* **2012**, *61*, 539–542, <https://doi.org/10.1093/sysbio/sys029>.

34. Mironov, A.N.; Minin, K.V.; Dilman, A.B.; Smirnov, I.S. Deep-Sea echinoderms of the Sea of Okhotsk. *Deep. Res. Part II Top. Stud. Oceanogr.* **2018**, *154*, 342–357, <https://doi.org/10.1016/j.dsr2.2017.10.003>.
35. Ludwig, H. The Holothurioidea. In Reports on an exploration off the west coasts of Mexico, Central and South America, and off the Galapagos Islands, in charge of Alexander Agassiz, by the U.S. Fish Commission Steamer *Albatross*, during 1891. *Mem. Mus. Compar. Zool. Harvard Coll.* **1894**, *17*, 1–183.
36. Djakonov, A.M. Key to the Echinoderms of the Far Eastern Seas. *Izv. Tikhookeanskogo N. I. Instituta Rybn. Khozyaistva i Okeanogr.* **1949**, *30*, 1–130.
37. O’Loughlin, P.M. Elaspod holothurians from the continental slope of Australia. In *Echinoderms: San Francisco. Proceedings of the Ninth International Echinoderm Conference San Francisco, CA, USA, 5–9 August 1996*; Mooi, R., Telford, M., Eds.; Balkema: Rotterdam, The Netherlands, 1998; pp. 499–504.
38. Ludwig, H. Vorläufiger Bericht über die erbeuteten Holothurien. In: Reports on the Dredging Operations off the West Coast of Central America to the Galapagos, etc., by the U. S. Fish Commission Steamer *Albatross*. IV. *Bull. Compar. Zool. Harvard Coll.* **1893**, *24*, 105–114.
39. Clark, H.L. Holothurioidea. In Reports Sci. Results Exped. Trop. Pacific, V. 22; Reports Sci. Results Exped. to East. Trop. Pacific, v. 33. *Mem. Museum Comp. Zool. Harvard Coll.* **1920**, *39*, 115–154.
40. GBIF.org. GBIF Occurrence Download. Available online: <https://doi.org/10.15468/dl.2dnzrk> (accessed on 15 April 2021).
41. Elgetany, A.H.; van Rensburg, H.; Hektoen, M.; Matthee, C.; Budaeva, N.; Simon, C.A.; Struck, T.H. Species delineation in the speciation grey zone—The case of *Diopatra* (Annelida, Onuphidae). *Zool. Scr.* **2020**, *49*, 516–534, <https://doi.org/https://doi.org/10.1111/zsc.12421>.
42. Ratnasingham, S.; Hebert, P.D.N. BOLD: The Barcode of Life Data System: Barcoding. *Mol. Ecol. Notes* **2007**, *7*, 355–364, <https://doi.org/10.1111/j.1471-8286.2007.01678.x>.
43. Vinogradova, N.G. Zoogeography of the Abyssal and Hadal Zones. *Adv. Mar. Biol.* **1997**, *32*, 325–387.
44. Rybakova, E.; Galkin, S.; Gebruk, A.; Sanamyan, N.; Martynov, A. Vertical distribution of megafauna on the Bering Sea slope based on ROV Survey. *PeerJ* **2020**, *2020*, e8628, <https://doi.org/10.7717/peerj.8628>.
45. Miller, A.K.; Kerr, A.M.; Paulay, G.; Reich, M.; Wilson, N.G.; Carvajal, J.I.; Rouse, G.W. Molecular Phylogeny of Extant Holothuroidea (Echinodermata). *Mol. Phylogenet. Evol.* **2017**, *111*, 110–131, <https://doi.org/https://doi.org/10.1016/j.ympev.2017.02.014>.