



*Visit*

**Pend Oreille  
River Valley**

2021-22 • Visitors Guide



# Offering Years of Real Estate Experience



Mary Ann  
Jones  
*Designated  
Broker*



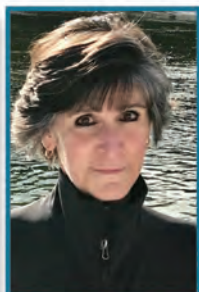
Gwendy  
Marshall  
*Office  
Manager*



Lacey  
Brown  
*Realtor*



Tiffany  
Carlson  
*Realtor*



Theresa  
Hiesener  
*Realtor*



Judy  
Kokanos  
*Realtor*



Dorothy  
Yeaw  
*Realtor*

- User friendly website updated every hour
- Full inventory of all homes in the area.
- List your home with the Professionals
- Professional Drone & Still Photography free to our customers
- Over 50 years experience serving our community
- Top producing office in area
- Licensed in Washington & Idaho
- We are OPEN! Monday-Friday 9:00 am to 5:00 pm
- After hours by Appointment!

Licensed in Washington & Idaho

[www.NWProRealEstate.com](http://www.NWProRealEstate.com)

509-447-3144 • 1-800-546-5570

301 N. Union Ave., Newport WA 99156





# ***We will guide you through the whole Real Estate Experience***

***Washington and Idaho***

***Residential • Farm / Ranch • Waterfront  
Recreation • Vacant Land • Commercial  
Foreclosures***



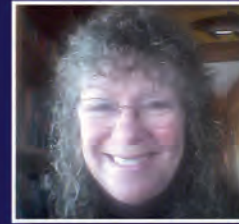
**Wilma Mason**  
509-671-0920



**Randy Nelson**  
509-671-1416



**Donna Hohenschuh**  
509-671-1118



**Lorraine Kirkpatrick**  
509-671-0486



**Jim Caviglia**  
208-946-1980



**Erin La Rue**  
509-589-0085



**LaVerne Day**  
208-661-4844



**Paul Edgren**  
509-993-4896



***“It’s so much more than just the home”***

**509-447-2421 • 300 S. Washington, Newport, WA • [www.NCRNorth.com](http://www.NCRNorth.com)**

# Come Visit Pend Oreille River Valley

Situated in the cradle of the Selkirk Mountains, the Pend Oreille River Valley is home to some of the country's most stunning natural beauty, as well a growing hub of arts, food and shopping. Come visit us to enjoy the Pend Oreille River – one of only 20 north flowing rivers in the United States – running through the Colville, Panhandle and Kaniksu National Forests. It is also home to the Little Pend Oreille National Wildlife Refuge and part of the International Selkirk Loop – a national scenic byway. Turn north on Highway 2 from Interstate 90, or head south on Highways 31 from Canada. Come visit us to experience a small-town, homegrown community that is ready to welcome you.

## Advertising Index

Blue Diamond Marina & Resort .....	Inside back cover
Boundary Dam.....	11
Camas Center for Community Wellness ...	14
Camas Center Medical & Dental Clinic .....	13
Church Directory .....	6
Cutter Theatre .....	4
Elkins Resort.....	4
Kalispel Casino .....	5
Kalispel Market.....	9
Kalispel RV Resort.....	6
Newport Hospital & Health Services.....	10
Newport Rodeo .....	12
North Country Realty .....	1
Northwest Professional Real Estate .....	Inside front cover
Peak Sand & Gravel.....	8
Pend Oreille Cannabis Co.....	10
Pend Oreille County EDC.....	Inside back cover
Pend Oreille County Fair .....	8
Pend Oreille County Historical Museum ..	12
Pend Oreille Title & Escrow .....	13
Priest River Development Corp.....	11
Professional Realty Services .....	Back cover
Restaurant Guide .....	16
RTI .....	7
Stoneridge Resort .....	16
Sunshine Shipping.....	Back cover
Tan Linez.....	Back cover
The Highway 57 Store .....	16
The Inn at Priest Lake.....	7
Vaagen Bros. Lumber.....	15
West Bonner County School District.....	14

Publisher: Michelle Nedved

Advertising: Cindy Boober and Lindsay Guscott

Reporters and Editors: Don Gronning and Sophia Aldous

Cover photo: Chris Kardos, [chriskardosphotography@gmail.com](mailto:chriskardosphotography@gmail.com)

Published by The Miner Newspapers • 421 S. Spokane, Newport WA  
509-447-2433 • [www.PendOreilleRiverValley.com](http://www.PendOreilleRiverValley.com)

# Events

The Pend Oreille River Valley is home to a myriad of annual events, from the Bigfoot Festival in the north part of Pend Oreille County to Newport's Rodeo to the Timber Days in Priest River, there are plenty of events to take in.

## *Fore! the Health of It: June 18*

Newport Hospital and Health Services invites all golfers to participate in the 2021 Fore! The Health of It Golf Tournament Friday, June 18 at The Highlands Golf Course. Enjoy a complete program of activities, 18 holes of golf (cart included), snacks, and contests followed by awards ceremony, catered dinner, and door prizes. The event raises money for the hospital foundation's charitable efforts around the community. Registration starts at 11:30 a.m. with a 1 p.m. tee off. Cost is \$125 per player/\$500 foursome / add a dinner guest for \$25. Corporate sponsorships are available. Return your completed registration by Friday, June 11 at 4 p.m. The Highlands Golf Course is located at 5600 E. Mullan Ave., Post Falls. For more information, go to [www.newporthospitalandhealth.org/event/fore-the-health-of-it-golf-tournament](http://www.newporthospitalandhealth.org/event/fore-the-health-of-it-golf-tournament).

## *Metaline Falls Bigfoot 5K: June 19*

The course takes you from downtown Metaline Falls, up Lehigh Hill, back down to circle the town along the river, and finish at the town's Busta Park. Race starts promptly at 8 a.m. The 5K is a precursor to the Metaline Falls Bigfoot Festival, which is June 20. For more information, go to [www.mfbigfoot.com](http://www.mfbigfoot.com).

## *Metaline Falls Bigfoot Festival: June 19-20*

A weekend all about Bigfoot! A town-wide event with field researchers from USA and Russia, 5K race, and free entrance to vendor mall, live music and a film festival. From Newport take Highway 20 north for a little over an hour. Drive over the Pend Oreille Bridge and you are in Metaline Falls. For more information, go to [www.mfbigfoot.com](http://www.mfbigfoot.com).

## *Lawnmower drag races: June 20*

Souped up lawnmowers drag race down city streets, while fans watch from the sidelines. The Big Back-In circuit holds drags throughout the region, starting at Spirit Lake, Idaho June 20 at noon. Anyone is welcome to race. Sign up three hours before the race for \$20 each, or bring your lawn chair and be a spectator. The mowers are loud – bring earplugs for little ones. Priest River's drags are held in conjunction with Timber Days.

## *Newport PRCA Rodeo, Parade: June 25-26*

Probably the biggest event in the area each year is the Newport Rodeo weekend, well, Friday and Saturday really. The rodeo action is only part of the festivities. There is also a parade, games for kids, vendors, live music, a beer garden and carnival.

The rodeo starts Friday night, with all the regular rodeo events. Ranch bronc riding was added several years ago and is a popular event. It's a special contest in which working cowboys try to ride a bucking horse with a regular saddle. Just about anything goes and contestants can ride with one hand, two hands or no hands. The wildest ride wins.

Saturday gets underway with a Cowboy Breakfast at the Rodeo Grounds. The parade happens at 11 a.m. and winds through downtown Newport.

## *Freedom Fest: July 2-5*

The first ever Freedom Fest is happening at Bear Paw Camp just north of Newport, Wash., this summer. Starting Friday, July 2 at noon until Monday, July 5 at 8 a.m., a weekend of family fun awaits. It is a non-denominational festival for all.

Eight fantastic Christian worship bands - Dante Bowe, Mack Brock, Doe Jones, Riding High Ministries, Aaron and Becky Lucas, Him & Her, The Well MSC, Real Recognize Real - will have the gorgeous Pend Oreille River as their backdrop for this family friendly weekend. Special speakers Brian and Kari Jennings, Joel Ramsey, Aaron Richner, Jeff Ecklund, and Aaron Lucas are there to deliver their inspirational messages.

Also planned are almost endless activities

including family competitions, high rope confidence course, trust building challenges, and breakout sessions. Being a waterfront facility, you will not want to miss the inflatable, swimming water park. River baptisms will be provided to anyone seeking to declare their dedication to Christianity. The first night from 11 p.m. to 2 a.m. is Teen Night. There will be more attractions, but you just have to be there to find out what. Stay in your tent or RV and get access to everything going on for \$120 per person or \$270 for a household of up to six immediate family members. If you are not spending the night and are simply coming for the fun, entertainment, and inspiration, your price is \$100 or \$250, respectively. Food is extra with \$75 per person for the weekend. Dinner is not included; the food vendors will be there to help you out with dinner. Sign up now at [freedomfest.net](http://freedomfest.net). Bear Paw Camp is located at 581 Bear Paw Drive, Newport.

## *Run Whatcha Brung Motorcycle Drags: July 3*

Bikers from throughout the Northwest and beyond gather in Oldtown for motorcycle drag races. Bikes of all makes and models line the parking lots on Highway 2 in Oldtown. Racers start arriving Friday, with the races Saturday. Live music, beer gardens, vendors and games provide fun for the entire family.

## *Diamond Lake 4th of July 1/2 Marathon: July 4*

The premier running event of the year! The course is 13.09 miles in and around lovely Diamond Lake. The swim starts at 6 a.m. with the run at 7:15 a.m. (\$10 entry fee, including shirt \$25). In 2021 the Edge-water Restaurant across from the finish line will be serving breakfast after the run. Just send a message via the Diamond Lake 4th of July 1/2 Marathon Facebook group (private group, must request to join) or email, [jeffreybell1954@gmail.com](mailto:jeffreybell1954@gmail.com), if you want to participate this year. If ordering a shirt, the deadline to register is June 1.

## *Diamond Lake Fourth of July Boat Parade: July 4*

If you're in the Diamond Lake area on the Fourth of July, one of the must do things is watching the Boat Parade. It has become



## THE CUTTER THEATRE

Come visit our architecturally stunning historic 1912 building, beautifully restored and revitalized as a performing and visual arts center.

**Theatre • Concert Hall • Art Gallery • Events**

302 Park Street, Metaline Falls, WA 99153

509-446-4108 • www.cuttertheatre.com

### JANUARY

Amateur Photo Contest

### FEBRUARY

Missoula Children's Theatre

### JUNE

Health Fair and Expo

### AUGUST

Fund raising Dinner & Auction

### SEPTEMBER

Shrimp Boil & Ping Pong Raffle

### OCTOBER

Mushroom Fest

Fall Festival

### DECEMBER

Deck the Falls

a tradition for the lake community to get as many unusual vessels on the lake as possible, with everyone wearing the required life jackets, of course.

### *Priest River Fireworks: July 4*

The Priest River Chamber of Commerce puts on a fireworks display at dusk over the Pend Oreille River. Watch from downtown Priest River at the big City Park, or from Bonner Park West.

### *Kalispel Tribe UTV/ATV Poker Ride: July 10*

Are you ready? Save the Date! The first Annual Kalispel Tribe UTV/ATV Poker Ride is gearing up and any one with a love for outdoor recreation and UTV/ATVs are welcome to participate. Course and time not yet known, contact Corrie Johnson at [cjohnson@kalispeltribe.com](mailto:cjohnson@kalispeltribe.com) for more information.

### *Newport Rough Stock Rodeo: July 17*

If you like bucking horses and bulls, the Newport Rough Stock Rodeo is for you. Featuring just the bucking events – known in rodeo lingo as the Rough Stock – spectators will see some of the best riders in the Northwest competing in bareback riding, saddle bronc riding, bull riding and the ranch bronc riding. Stock contractors McMillan-Layton bring some of the orneriest critters around to test the riders' mettle.

### *Timber Days: July 30-31*

In celebration of the heritage that built Priest River, Timber Days highlights activities around the logging industry.

Drive through Priest River, heading east, and the park is on the right side of the Highway, just past the only streetlight in town.

The event begins Friday evening with the Asphalt Angels' Hot Neon Nights Car Show through downtown Priest River. Saturday kicks off with the Run for the Berries Fun Run. A parade of floats, most in a logging theme, comes through Priest River City Park at 11 a.m. Children are thrown candy from parade participants for their enjoyment throughout the day. The classic car show at the junior high is enjoyable for people of all ages. Logging competitions occur at Bonner Park West near the Pend Oreille River and will include burling, aka log rolling. Lawnmower races will start their engines in downtown Priest River at about 4 p.m.

### *Bonner County Rodeo: Aug. 6-7*

The annual PRCA Bonner County Rodeo in Sandpoint returns with bull riding, bronc busting, barrel racing, tie down roping, team roping and a whole lot more at the Bonner County Fairgrounds. Gates open at 6:30 p.m. both days. Ticket prices online & around town are \$ 8 for children and \$15 for adults. At the gate prices are \$10 for children and \$18 for adults. Tickets can be purchased in advance around Sandpoint at Bonner County Fairgrounds Office, Carter Country Farm & Feed, Columbia Bank, Les Schwab Tire, North 40, Sandpoint Super Drug, Wood's Hay & Grain and at Tractor Supply in Oldtown, Idaho. For more information and to buy tickets online, go to [www.sandpointbonnercountyrodeo.com](http://www.sandpointbonnercountyrodeo.com). The fairgrounds are located at 4203 N. Boyer Rd., Sandpoint.

### *Tri-Town Float Down Poker Paddle: August 7*

There is always fun to be had while paddling down the scenic Pend



# Elkins

## RESORT ON PRIEST LAKE

Call today to book your vacation!  
208.443.2432 | [elkinsresort.com](http://elkinsresort.com)  
404 Elkins Rd., Nordman ID

Oreille River, and fun is sure to be had at the Tri-Town Float Down in north Pend Oreille County.

Boaters launch at the Ruby Crossing boat launch near mile-marker 404 on Highway 20.

The early morning start gives paddlers a gorgeous view as they head north to Ione Park. There are three stops on the first day for cards, one at the launch and take-out, and one about halfway on the paddle.

The second day, floaters put in at Box Canyon Dam, using tubes and floating devices or a small boat. They end the Float Down at Metaline Park, where the last card is given. For more information, go to [www.facebook.com/TriTownFloatDownPokerPaddle](http://www.facebook.com/TriTownFloatDownPokerPaddle).

### Hydroplane races: Aug. 7-8, Aug. 28-29

Outboard motorboat racing fans have two places to see the little boats race – on the Pend Oreille River in Oldtown. The races, sponsored by the Stateline Outboard Racing Association, will be held Aug. 7-8 and

Aug. 28-29 in Oldtown. Admission is free for spectators. For more information, go to [www.statelineoutboardracing.weebly.com](http://www.statelineoutboardracing.weebly.com).

### Summer Slam 2021: Aug. 14-15

The Summer Slam 2021 3 on 3 Basketball Tournament takes place at the Kalispel Casino, located at 420 Qlispe, River Rd. in Cusick. The 3-on-3 basketball brackets will be set up for male, female, and coed in age categories (Ages: 8-10, 10-12, 12-14, High School (14-18) Boys, Girls, Co-ed and adult men's open, adult women's open, and adult coed open). In addition to the tournament retired WNBA player, and 2-time Olympic gold medalist Ruthie Bolton will be in attendance alongside Rise Above's co-founder, Jaci McCormack to tell their story and their involvement with prevention, violence, and building a healthy community.

Free entry signup at [www.kalispeltribe.com/kalispel-summer-slam](http://www.kalispeltribe.com/kalispel-summer-slam). Registration must be submitted by July 22. No exceptions.

### Pend Oreille Relay for Life: Aug. 13

The annual Pend Oreille Valley Relay for Life is at Newport High School, starting at Ellersick Field 6:30 p.m. Friday, Aug. 13 and ending at 6:30 a.m. Saturday, Aug. 14. The 12-hour event is a fundraiser for the American Cancer Society and benefits local cancer patients. A special dinner for cancer survivors will be held at Newport High School at 5 p.m. The opening ceremony and survivors' lap will be at 6:30 p.m. For more information, contact Terri Ivie at 208-448-1949.

### Bonner County Fair and Rodeo: Aug. 18-21

The goal of the Bonner County Fair is to provide a free educational opportunity for residents of Bonner County to display their ideas and projects from their areas of expertise and interest, as well as allowing local organizations and businesses to present their products to the public. Family friendly events and contests are held throughout the week. A 4-H Market Animal Sale is held on Sat-



## WHERE THE DEER AND THE BENJAMINS PLAY.

Nestled in the mountains, perfectly situated near the river, there's a place where you can relax, recharge and refuel. Play the latest slots in the casino, enjoy some Northwest comfort food or sip on a drink in the neighborly restaurant and lounge. Stay for days at Kalispel RV Resort featuring hookups and cozy cottages. Whatever you do, there's no wrong way to experience the beautiful Pend Oreille River Valley.



**KALISPEL**  
CASINO

[kalispelcasino.com](http://kalispelcasino.com)

420 Qlispe River Way | Cusick, WA



**ADVENTURE IS  
ALWAYS IN  
SEASON.**

Whether you're into hiking, boating and ATVing, or dining and gaming at the on-site casino, look no further than Kalispel RV Resort in Cusick, WA.

RV spaces are just \$35 per night or reserve one of our cozy cottages.



Ask about our government and AAA member rates.

**KALISPEL**  
RV RESORT

[kalispelrvresort.com](http://kalispelrvresort.com) | 370 Qlispe River Way | Cusick, WA

urday, and a parade of champions is that afternoon. The fairgrounds are located in Sandpoint, on Boyer Avenue. Visit [www.bonnercountyfair.com](http://www.bonnercountyfair.com).

### *Pend Oreille County Fair, Rodeo: Aug. 19-22*

The annual Pend Oreille County Fair at Cusick is a much-anticipated time of the year, both for participants and visitors. For participants, it is a time to show off your animals, vegetables or hobbies and see where they stand in relation to other entries. For the visitors, the Pend Oreille County Fair is a great example of what a rural fair can be. There are a variety of animals to see, from chickens to llamas. There are displays of the best fruits and vegetables, canned goods, photography and spinning demonstrations. Magic shows, horse western games, live music and mutton bustin' add to the fun. The Pro West Rodeo also takes place during the fair. The fairgrounds are located at 419152 S. Hwy. 20 in Cusick. Tickets are \$8 for adults, \$2 for youth 6-12 and five and under get in for free. You can find more information online at [www.pocfair.com](http://www.pocfair.com).

### *2021 Priest River Sprints: Aug. 21*

Located on the beautiful Priest River, the Pend Oreille Rowing and Paddling Association (PORPA), together with the U.S. Army Corps of Engineers, holds the first Priest River Sprints at the Mudhole. It will be a day of fun for anybody wanting to race with rowing singles, kayaks, canoes, SUPs or rafts. Join tribal members and experts in learning more about the relationship the Kalispel people have with the Pend Oreille and other rivers in the area. Times to be determined. For more information, go to [www.porpa.org](http://www.porpa.org). The Mudhole is located along Highway 2 in Priest River.

### *Affair on Main Street: Sept. 5-6*

The small town of Metaline Falls puts on a big showing for the annual Affair on Main Street. From Newport, head north on Highway 20, staying straight when it changes to Highway 31. Follow until you cross the bridge to enter town. Vendors pack Metaline Falls Park, located at the end of Main Street, selling a variety of fun, interesting products. Area groups set up shop and sell hot dogs, burgers or huckleberry lemonade.

## *Where to Worship*

**ST ANTHONY'S  
CATHOLIC CHURCH**  
612 W First St. Newport  
Saturday Mass July & August 4 p.m.  
Sunday Mass 11 a.m.  
(509) 447-4231  
[www.pocoparishes.org](http://www.pocoparishes.org)  
[Facebook.com/pocoparishes](https://www.facebook.com/pocoparishes)

**CHURCH OF FAITH**  
an Acts2Church  
36245 Hwy 41, Oldtown, ID  
Sunday Services - 11 a.m. and 6 p.m.  
(208) 437-0150  
[www.churchoffaitholdtown.org](http://www.churchoffaitholdtown.org)

**HOUSE OF THE LORD**  
754 Silver Birch Ln. • Oldtown, ID 83822  
Sun. ~ 9 a.m. and 11 a.m.  
(208) 437-2032  
[www.hotl.church](http://www.hotl.church)

**SEVENTH-DAY  
ADVENTIST**  
Saturdays  
Diamond Lake 326002 Highway 2  
10:00 a.m.  
Edgemere • 5161 Vay Rd 11:00 a.m.  
Newport • 100 N. Lilac Lane 10:40 a.m.

**NEWPORT SOUTHERN  
BAPTIST CHURCH**  
1 mile S. of Newport on Hwy. 2  
Sunday 11:00 a.m.  
(509) 951-2607 • (509) 292-0798





**Summer is on it's way, get ready for vacations, fun, and family. Make all your travel plans with RTI internet, streaming netflix is better with higher broadband. For a limited time, upgrade or get a new internet install and get one month FREE!  
Just call our office in Ione and get started today**

**Call 1.888.366.7821**



322 Main Street Ione Washington

[www.rtc.net](http://www.rtc.net)



**Rates & Reservations  
208 443-2447**

*Your Place at Priest Lake*

**Conveniently Located in the Recreation Paradise of Priest Lake, Idaho**

- 24 Guest Rooms (8 with Kitchenettes) • Seasonal RV Spaces with Full Hook-Ups
- Conference Facilities • Laundromat On-Site • Satellite TV

[TheInnAtPriestLake.com](http://TheInnAtPriestLake.com) • 5310 Dickensheet Road • Coolin, Idaho



**PEND OREILLE COUNTY FAIR**

**Sew It, Grow It, Show It**

CAR SHOW  
GAMES  
FOOD  
MAGIC SHOW  
MUTTON BUSTIN

Rodeo Admission:  
Adults \$8  
Youth 6-12 \$2  
& Under Free

ANIMAL MARKET SALE  
LIVESTOCK SHOWING  
PRO WEST RODEO  
HORSE WESTERN GAMES  
LIVE MUSIC

Fair Admission:  
Adults \$8  
Youth 6-12 \$2  
& Under Free

**AUGUST 19-22, 2021**  
**CUSICK, WASH.**  
**pofair@gmail.com • 509-445-1367 • pocfair.com**

# Things to see

There are many things to see throughout the Pend Oreille River Valley that you can take in year round. Some are well known, some less so. Here are a few.

## Get historical at Priest River Museum

In 1993, the Keyser family donated their original homestead house that was built in 1895 to the Priest River Chamber of Commerce. The house was the first framed structure built in the area at a time when others were built of logs. In late 2007 the museum closed its doors to the public. In 2010 the museum and information center was re-established. In 2014, the logging/timber display room was updated together with displays for military, school, sewing, ferrier and sportsman. The kitchen and pantry are completely restored and depict the pioneer era.

For tours and hours, call 208-610-9643. The Priest River Museum is located at the end of Main Street in downtown Priest River.

## Visit the Pend Oreille County Historical Society Museum

The Pend Oreille County Historical Society Museum is located in Newport, Wash., at the Newport Centennial Plaza, where the south end of Washington Avenue intersects with U.S. Highway 2.

Entry into the museum grounds is through the former Idaho and Washington Northern Railroad depot. There you will find a gift shop, featuring historical items as well as hand crafted gifts, books, museum T-shirts, ball caps and postcards for sale. The Pend Oreille County Historical Society's annual Big Smoke collection of historical stories and information is available for sale. Big Smoke issues go back to 1969.

The outdoor grounds feature full landscaped flower gardens; several original log cabins moved to the site; an open block building featuring tools of early industry and home tools; a replica of an L-4 fire lookout tower; the Penrith Milwaukee railroad flag-stop station; an original ice house; early printing press room and a complete sawmill moved to the grounds.

The museum offers a digital research center and has available more than 5,000 photographs covering the area's early history. Out of print western history books, scrapbooks and a complete catalog of The Newport Miner newspapers are available for research.

To learn more about the historical society and museum visit [www.pochsmuseum.org](http://www.pochsmuseum.org).

Open seven days a week effective May 28, 2019. The museum is open 10 a.m. to 4 p.m. Mondays through Saturday and 10 a.m. to 4 p.m. Sunday. Admission is free for children under 13 and 13-years-old and up is \$5 per person.

## Visit Manresa Grotto

This is a nice little picnic spot and rest area along the LeClerc Road just north of Usk, located within the Kalispel Indian Reservation. The trail to the grotto switchbacks up the hillside and is very short, no more than

- Crushed Rock
- Screened Sand
- Screened Topsoil
- Rip Rap
- Boulders

**Main Office**  
**(208) 255-2611**  
**PR Dispatch**  
**(208) 437-4502**  
**Priest River, ID**  
**[www.peaksandandgravel.com](http://www.peaksandandgravel.com)**

**PEAK**  
SAND & GRAVEL

a half-mile round trip. This is a super short, super easy hike to visit the cave. Restrooms and a small picnic area are there as well.

### *See the Buffalo at Usk*

The Kalispel Tribe has a herd of buffalo that you can see from the Camas Center for Community Wellness, about 19 miles north of Newport. The herd consists of about 100 head of buffalo that roam over 600 acres. The herd provides many resources for tribal members.

People stop and watch the buffalo from a pull out viewing area just off LeClerc Creek Road. The herd has about 25-30 calves a year. They weigh about 50 pounds at birth and the calves are a reddish color until they're about three months old.

### *See the buffalo at Blanchard*

LIII Ranches at Blanchard has a buffalo herd and offers buffalo meat for sale. Tours are available by reservation. The ranch is located in Blanchard, Idaho, about 15 minutes south of Newport. Take Highway 41 to get there from Newport.

### *Take in the Camas Center for Community Wellness*

The Camas Center is one of the real jewels in Pend Oreille County. Located about 19 miles north of Newport at 1821 N. LeClerc Road, the Camas Center offers a variety of activities, including a 33-foot rock climbing wall, a 25-meter lap pool, a recreation pool with a water slide, a hot tub, a sauna, state of the art fitness equipment in a group exercise room, a gymnasium with seating for 300 people, a deli, a game room and internet access. Adults can buy a day pass for \$10. For people 55 and older and those under 18, a day pass can be purchased for \$5. More information can be found online at [www.kalispeltribe.com/camas-center/overview](http://www.kalispeltribe.com/camas-center/overview).

### *Newport City Park*

Children of all ages flock to the Newport Spray Park in Newport City Park located at First Street and Calispel Avenue. There are several different water-spraying features on a 3,000 square foot splash pad for children to enjoy. The hours of operation are daily 10 am to 7 pm weather permitting. For the 2019 season, the spray park is scheduled to open June 14, weather permitting. The spray park will remain open tentatively until Sept. 3, 2019 when it will close for the season.

The park offers a gazebo, as well as play equipment and a skate park.

### *T.J. Kelley Park*

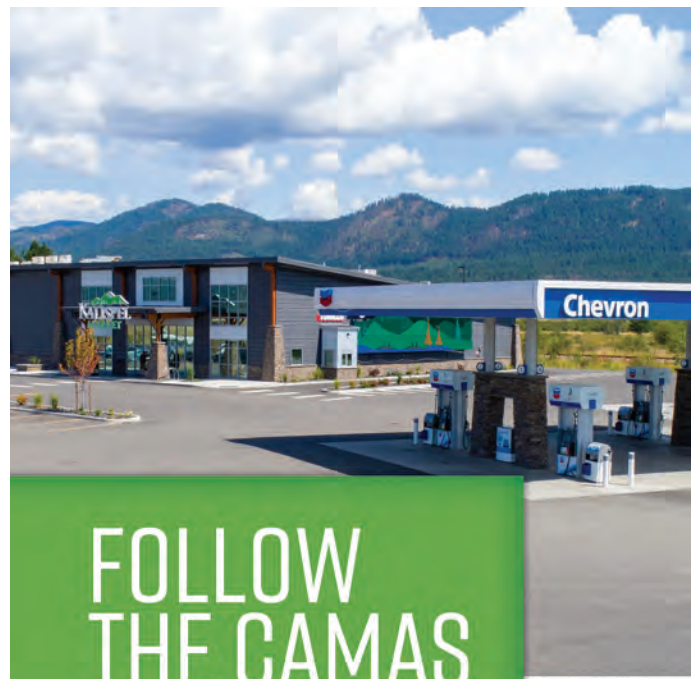
Sitting in T.J. Kelley Park, along Washington Street in Newport, allows people to enjoy the flow of downtown Newport.

Restrooms are available seasonally, and picnic tables are great for family gatherings or birthday parties. There is also a rock waterfall and rock benches.

### *Pend Oreille County Park*

Camping, backpacking and horseback riding are a few of the things Pend Oreille County Park is known for by locals.

The park entrance is on Highway 2 about two miles from the Spokane County line and is open May through October. A day-use area is also available.



**FOLLOW  
THE CAMAS  
FLOWERS**

**TO GREAT REWARDS!**

Camas Rewards points and comps earned at Kalispel Casino can be redeemed at Kalispel Market for grab-and-go snacks, groceries and more!

- Grocery Essentials
- Camping Staples
- Fresh Fruits & Veggies
- BirdShack Fried Chicken
- Fishing Supplies
- Firewood
- 10¢ Per Gallon Camas Rewards Fuel Discount



[kalispelmarket.com](http://kalispelmarket.com)

370 Qlispe River Way | Cusick, WA

**Pend Oreille County's *ONLY*  
Marijuana Retailer**

**Check Out Our  
CBD Lotions ~ Potions ~ Creams**



**PEND-OREILLE**  
CANNABIS COMPANY  
EST. 2016 IONE, WA

**124 E. RIVERSIDE AVE. | IONE, WA |  
509-442-3420  
Mon-Sat 10-7 • Sun 11-5**

THIS PRODUCT HAS INTOXICATING EFFECTS AND MAY BE HABIT FORMING. MARIJUANA CAN IMPAIR CONCENTRATION, COORDINATION, AND JUDGMENT. DO NOT OPERATE A VEHICLE OR MACHINERY UNDER THE INFLUENCE OF THIS DRUG. THERE MAY BE HEALTH RISKS ASSOCIATED WITH CONSUMPTION OF THIS PRODUCT. FOR USE ONLY BY ADULTS TWENTY-ONE AND OLDER. KEEP OUT OF THE REACH OF CHILDREN.

### *Fred G. Anderson Veteran's Memorial Park*

The Veteran's Memorial Park is approximately .2 acre. This park is a downtown rest stop with an added feature of a veteran's memorial. This park includes an ADA restroom for tourists traveling through the city as well as benches to sit on and enjoy the beauty of the veteran's memorial.

The Veteran's Memorial Park is located at 211 South Union Ave., between the Newport Fire Hall and the Washington Federal parking lot.

### *Ione City Park*

Launch a boat in Ione City Park and enjoy the scenic river in the north part of Pend Oreille County. Boaters can boat within one mile of Box Canyon Dam.

Head north on Highway 20 about 46 miles after leaving Newport, and continue on to Highway 31 for about four miles. Turn right onto Main Street and the park entrance is a couple blocks up the road.

There is a covered picnic area for events, barbecue pits for a gathering, and views of the scenic river that runs the length of the park. It's one of the county's water trail sites.

### *Crawford State Park Heritage Site's Gardner Cave*

The Crawford State Park Heritage Site is a 49-acre, forested day-use park featuring Gardner Cave. A Discover Pass is required for vehicle access to state parks for day use and the park is closed Tuesdays and Wednesdays.

**Whatever floats your boat...  
...we're here for you!**

- 24-Hour Emergency Care
- Family Practice Clinic (509) 447-3139
- Diagnostic Imaging
- Surgery & Anesthesia
- Family Birth Center
- Rehabilitation Services
- Wound Care



**NEWPORT HOSPITAL & HEALTH SERVICES**  
714 W. Pine St., Newport, WA • (509) 447-2441 • [NewportHospitalAndHealth.org](http://NewportHospitalAndHealth.org)

Touring Gardner Cave is a popular activity at the park. With a slope length of 1,055-feet, the cave is the third longest limestone cavern in Washington. This cave is filled with stalactites, stalagmites, rim stone pools, and flowstone. Gardner Cave is a 500 million-year-old cavern that measures approximately 2,072 feet in length and 295 feet in depth. Call Crawford State Park at 509-446-4065. Suitable walking shoes or hiking boots are recommended for touring the caves and surrounding area. A Discover Pass is needed for admittance. An annual pass costs \$30 and a day pass \$10.

### Sweet Creek Falls

The Sweet Creek Falls Rest Area is located about 5.5 miles north of Ione, just past Selkirk High School on the west side of the road. There are several picnic tables and a paved hiking trail that leads to the falls.

### Metaline Waterfront Park

Grass, a boat launch, picnic areas, a large pavilion, a large barbecue pit, as well as a children's playground, all make Metaline Waterfront Park a place to stop.

From Newport, follow Highway 20 about 60 miles until entering the town of Metaline.

### Metaline Falls Busta Park

Metaline Falls Busta Park offers a place to sit and enjoy fresh lemonade or a picnic in the grass. There is a train car converted into a visitor's

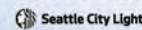
## BOUNDARY DAM

Camping, Boat Ramp, Day Use Area and Vista House with observation deck are Open  
No Reservations Accepted



Enjoy the fun and beauty of North Pend Oreille County.

**Boundary Hydroelectric Project**



1198 Boundary Dam Access Road  
Metaline, WA 99152

**2021 Boundary Dam Tour Season Cancelled**

*Implementing a vision of a better economy*

*In Priest River Development Park*

**PRDC**  
Priest River Development Corp.

*Growing one business at a time...*

#### Our Mission

The Mission of PRDC is to facilitate the diversification of employment opportunities in the Priest River area. Provide properly zoned commercial property at reasonable costs, to support new business, existing business retention and growth.

- Aerocet
- Freeze Furniture Manufacturing
- Lone Wolf Dist.
- Recycling Equipment Manufacturing, Inc.
- Selkirk Timberwrights
- Van Tech/SafetyLine
- Julbert, Inc.
- 40 High Street Tenants
- Pro Automotive
- Selkirk Business Solutions

SPACE AVAILABLE

Priest River Industrial Park Land



katlynPRDC@yahoo.com • PO Box 400 Priest River, Idaho • 208-448-1312 • www.PriestRiverEDC.com

## Discover Our MUSEUM Newport, Washington

operated by the Pend Oreille County Historical Society

COLLECTIONS OF HISTORIC ARTIFACTS THAT PRESERVE  
THE HISTORY AND CULTURE OF NORTHEAST WASHINGTON.  
LOCAL HISTORICAL BUILDINGS AND DISPLAYS WITH PERIOD  
HOUSEHOLD FURNISHINGS.

EXHIBITS:

LOGGING • FARMING • RANCHING  
MINING • BUSINESS ENTERPRISES

MILITARY DISPLAYS ON LOCAL SERVICE MEMBERS  
AND MILITARY HISTORY

BEAUTIFUL LANDSCAPED GROUNDS

Hours:

Open everyday from May 28, 2021, through Labor Day 2021

Monday - Saturday 10 a.m. - 4 p.m.

Sundays 1 p.m. - 4 p.m.

ADMISSION \$5.00 ADULTS, CHILDREN 12 AND UNDER FREE

[www.pochsmuseum.org](http://www.pochsmuseum.org)

402 South Washington Ave., Newport, WA

509-447-5388 · [pochsmuseum@Frontier.com](mailto:pochsmuseum@Frontier.com)

Paid for by

City of Newport & Pend Oreille County hotel/motel tax funds

center. To get there from Newport, head north on Highway 20, staying straight when it changes to Highway 31. Follow until you cross the bridge to enter town and take the second right, go up a slight hill and turn left on Fifth Avenue.

### Priest River City Park

Enjoy the fresh air of the scenic river while visiting Priest River City Park.

From Newport, head east to Priest River on Highway 2 and the park is on the right just after the stoplight.

### Paddle to Pee Wee Falls

One of north Pend Oreille County's hidden gems is Pee Wee Falls, a more than 100-foot waterfall that can only be seen while boating the river.

Launch the boat at Boundary Dam Recreation Area, located about 60 miles to Metaline on Highway 20 from Newport. Turn left onto Boundary Road, follow the road for 12 miles, take the right hand fork and follow signs to the recreation area.

### Visit the Tiger Store and Museum

Ice cream and snacks can be enjoyed while learning the history of Tiger at the Tiger Store and Museum. Open Memorial Day through September, 10 a.m. to 4 p.m., Thursday through Monday. Plus the first three weekends in October. The rest stop is open 24 hours/day—outdoor information kiosk.

From Newport, head north on Highway 20 about 46 miles. The store is on the left just before the town of Ione.

### Take in a show at the Cutter Theatre

The historic Cutter Theatre offers plays, art shows, coffee and a host of other events throughout the year. The 1912 building was originally designed by architect Kirtland Cutter as The Metaline Falls School and is on the National Register of Historic Places.

Drive north on Highway 20 about 61 miles until reaching Metaline Falls. Turn right onto Grandview Street and follow it to the historic theatre. Call 509-446-4108 for more information, or visit [www.cutter-theatre.com](http://www.cutter-theatre.com).

Office hours are Monday, Wednesday and Friday, 9 a.m. to 4 p.m.

### Boundary Dam

There are no dam tours of Boundary Dam this season because of COVID precautions, but camping, the boat ramp and day use areas are open. No reservations are accepted.

The waters of Boundary Reservoir behind Boundary Dam offers three water-access-only small recreation sites on Bureau of Land Management lands, all along the reservoir's west bank, which provide primitive amenities. The BLM sites are Everett Slough, Ledbetter Cove, and Grandview.

US Forest Service lands on the other side of the reservoir offer additional primitive developed and dispersed recreation opportunities.

Due to dense forest and steep canyon slopes, Everett Slough is the only one of these sites that offers a hiking opportunity. There, hikers can travel through forest along the old +1-mile-long no-public-vehicle-access dirt road grade, that ends at the recreation site. Otherwise, activities at Boundary Reservoir include motorized and non-motorized boating,

**72nd ANNIVERSARY JUNE 25 & 26**

Performances 7:30 Each Night

**Tickets:**  
Adults - \$18  
Kids - \$8

**PRORODEO**  
PRCA

General information • Ray Hanson 360-770-1180  
[newportrodeo.com](http://newportrodeo.com)  
Paid for by Newport Hotel/Motel Tax

**TITLE INSURANCE  
ESCROW CLOSINGS • NOTARY  
PROPERTY PROFILES  
CONTRACT SERVICING**

312 S. Washington Avenue, Newport, WA

Pend Oreille

**Title & Escrow**

*From your first home  
to your dream home,  
and all the moves in between*

*PoTitle.com (509) 447-2471 mail@potitle.com*



**HOURS**

Monday - Wednesday  
8am - 5pm

Thursday  
9am - 5pm

CAMASCENTERCLINIC.ORG  
1821 N LeClerc RD, Ste #1  
Cusick WA 99119

The Camas Center Clinic is open to the public and accepts most public and commercial insurances.

**CARE FOR THE WHOLE PATIENT  
AND THE WHOLE COMMUNITY**



The Camas Center Clinic, located inside the Camas Center for Community Wellness, embodies the Kalispel Tribe's commitment to the health and well-being of the whole community. As a premiere family health center, we provide comprehensive health care to everyone, both Tribal Members and non-tribal community members. We offer the highest level of integrated primary care with behavioral health.

APPOINTMENTS:  
**509.447.7111**



West Bonner County School District #83

**"Strive for Greatness"**

*Spartans*

208-448-4439 • SD83.org  
134 Main Street, Priest River ID

fishing, picnicking, camping, and nature viewing. The three recreation sites each provide basic sanitary facilities with privacy fence.

Everett Slough has three primitive campsites, each with tent site, picnic table, fire ring, and bear-proof storage container.

Ledbetter Cove has four tent sites, two picnic tables, two fire rings, and two bear-proof containers.

Grandview has 2 primitive campsites, each with tent site, picnic table, fire ring, and bear-proof container.

### *Stretch your legs at the Cusick Rest Stop*

The Kalispel Tribe built the rest area one mile north of Cusick in 2013. It highlights the history of the tribe as well as offering a bathroom for travelers. It is open 24 hours a day.



Camas Center for Community Wellness is part of the Kalispel Tribe's vision for improving the quality of life of Tribal Members and the surrounding community. The Center was built to provide quality, holistic health care and wellness programs.

It houses a medical and dental clinic, daycare, fitness and recreation center, business meeting rooms, and more.

**509.447.7122**

[camascenter.org](http://camascenter.org)

1821 N. LeClerc Road, Cusick, WA





# FOREST HEALTH CHECK-UP

- Do you have 10 or more acres of timberland?
- Is your family forest healthy and fire resilient?

— SCHEDULE YOUR —  
**FREE TREE**  
— EVALUATION TODAY! —

 **Vaagen**

**509-684-5071**

[VaagenBros.com](http://VaagenBros.com)

*the*  
**57**  
**Store**

Huckleberry Pies & Products  
 Old Hickory Shed Distributor  
 Nightly Cabin Rental  
 Unique Gift Store

208.448.2642 57storeidaho@gmail.com  
 866 Hwy 57, Priest River, ID 83856

**Nightly Peak Rates**  
 \$125 Weekend • \$115 Weekdays  
 (Off Season Rates Lower)




Blanchard, ID  
 www.stoneridgeresort.com • 208-437-2451



# Local Delights

**1. Audrey's**

Homestyle Cooking - Quick & Friendly

509 - 447 - 5500

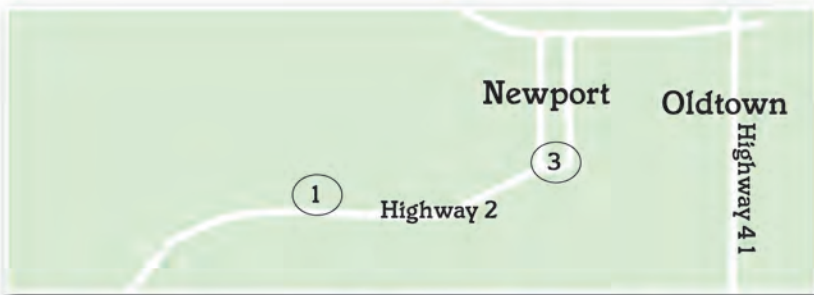
**2. 7Brews Espresso**

Full Coffee Bar • Sandwiches • Taco Tuesday • Breakfast • Lunch 208 - 290 - 3239

**3. Kelly's Bar & Grill**

Full Bar • Family Dining • Lunch • Dinner

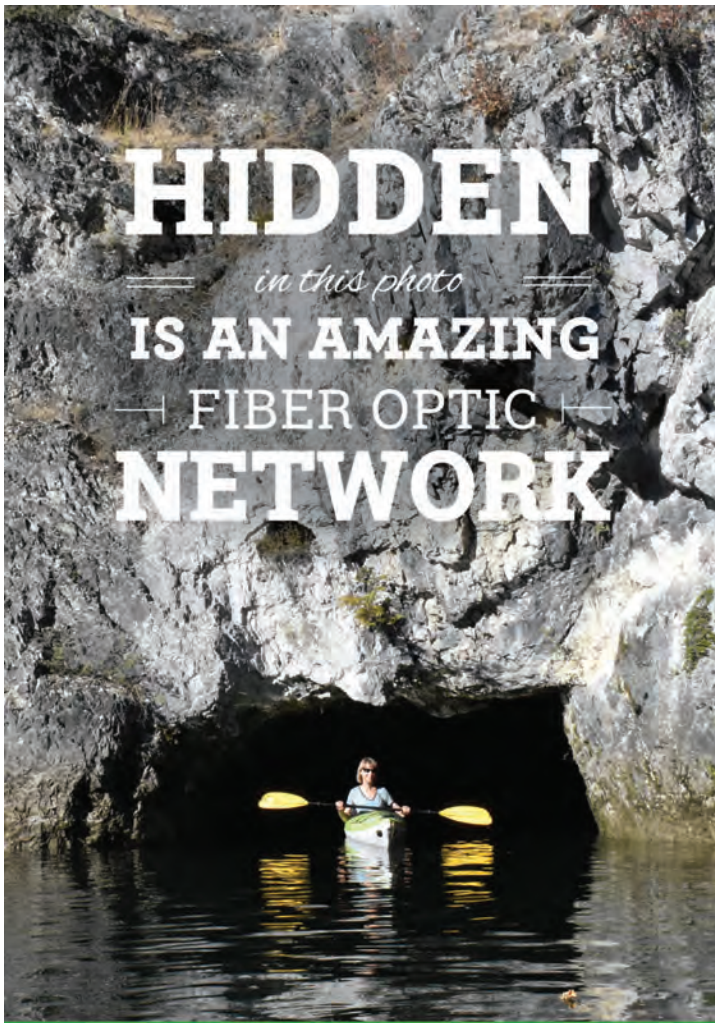
509 - 447 - 3267



# HIDDEN

*in this photo*

# IS AN AMAZING FIBER OPTIC NETWORK



If discovering the surprising places of northeast Washington lights your fire, consider this: **You could be living right here, where you love to play.** Newport and Pend Oreille County's \$34 million fiber optic network provides **gigabit-speed Internet** for remote workers and small businesses. You can enjoy an amazing high-recreation lifestyle with leading-edge Internet to fuel your business and life.

**Want to make a move to Lifestyle 2.0? Contact us today!**

**HIGH TECH. HIGH REC.**



Pend Oreille County  
Economic Development Council

509.671.5186

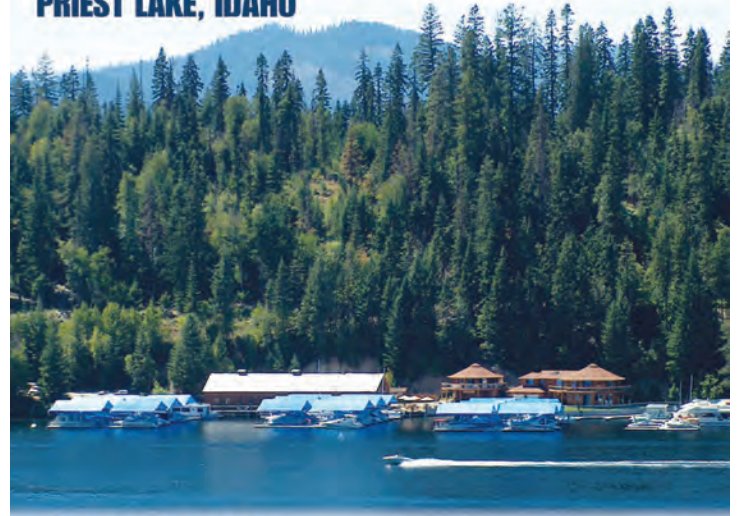
[www.HighTechHighRec.com](http://www.HighTechHighRec.com)

Photo: Exploring the Pend Oreille Water Trail. Drive time from downtown Newport to Ashenfelter Bay put-in, 3 minutes.

# BLUE DIAMOND

## MARINA AND RESORT

ON THE WEST SHORE OF CAVANAUGH BAY  
PRIEST LAKE, IDAHO



**Boat Rentals**

**Lakeside Lodging**

**Deep Water Moorage**

**Winter Moorage/Storage**

**Hinterland Chocolate Co.**

**Weddings, Flowers and Catering**

*Follow Us on Facebook* 

**2021 Special Events:**

Chocolate and Wine/Beer Pairing Events -

June 19, July 3, July 31, Aug. 28 by reservation

Aug 7 - Blues, Brews and BBQ with live music 6 PM

**(208) 443-2240**

**958 Blue Diamond Road, Priest Lake**

**[bluediamondmarina.com](http://bluediamondmarina.com)**

**[info@bluediamondmarina.com](mailto:info@bluediamondmarina.com)**



**PROFESSIONAL  
REALTY SERVICES**

**INTERNATIONAL**

*Uniting You With Your Dream Home*

**It's All About The Home.™**



*Hello.  
Sunshine*

**Alisha Krause**

REALTOR®

509-671-7630

118 S. Washington Ave., Newport

AlishaKrauseRealtor@gmail.com

www.SunshineRealEstateLLC.com

Licensed in ID & WA

**Tan Linez**

*Sunshine Tanning Salon, LLC*



*Get your  
glow on!*

**3 levels of tanning • 5 units • Fit Body Wrap  
Red Light Bed & Spray Tan Booth • Clean Comfortable Rooms**

118 S. Washington Ave. Ste. B, Newport, WA | 509-203-7626

10 am - 5 pm | Monday - Friday • Extended Hours by Appointment

**Sunshine  
Shipping**

**Keep Your  
Packages Secure  
from Theft**

**We offer Parcel Holding!  
All Shapes and Sizes!**

**FedEx**®  
Express



**Let us help you with your shipping needs!**

118 S. Washington Ave. Ste. C, Newport, WA | 509-245-2005 | 10:30 am - 5:30 pm | Monday - Friday

**Access through Professional Realty Services next to the Roxy**