

Coastal Fishes of Ie-jima Island, the Ryukyu Islands, Okinawa, Japan

Hiroshi SENOU¹⁾, Hiroko KODATO²⁾, Tomoyuki NOMURA²⁾ & Kyo YUNOKAWA³⁾

Key words: fish fauna, Ie-jima Island, Ryukyu Islands

Introduction

Ie-jima Island (often called as Ie-shima) is one of the Okinawa Islands Group, the Ryukyu Islands, situated off 5 km west of the Motobu Peninsula of Okinawa Island (Fig. 1). It is long oval-shaped in outline with its longer east west axis 8.2 km. The island is fringed with rich coral reefs, and dropoff with many caverns develops on north.

Senou *et al.* (2006) compared the fish faunas of 12 sites under the influence of the Kuroshio Current including Ie-jima Island. They indicated that the fish fauna of Ie-jima Island is more similar to that of the Miyako Islands and Ishigaki-jima Island than to that of Okinawa-jima Island among the Ryukyu Islands. They gave also a table of fish occurrences in each site for zoogeographical analysis. In Ie-jima Island, they noted that the number of species in total is 831, belonging to 80 families of 19 orders, but it was shown only as species allocation to each family.

On the other hand, a few faunal works on fishes have been performed in the Ryukyu Islands. Yoshino *et al.* (1975) compiled many taxonomic studies after 1800's, and recorded 1209 fish species including freshwater, offshore and deep-water fishes from the islands. Yamakawa (1979) listed 643 species as a result of compiling of Toshiji Kamohara and Takeshi Yamakawa' faunal works in the islands published during 1954 to 1971. However, there is no comprehensive faunal work in each island except that of Sesoko-jima Island near Okinawa Island by Yoshino and Nishijima (1981) who listed about 600 species of coral reef fishes.

In the present paper, therefore, we provide a species list of Ie-jima Island, which was updated by recent reexamination of the

Image Database of the Kanagawa Prefectural Museum of Natural History and a fish collection of the museum.

Methods

Study areas are coral reefs, harbors and tidepools around Ie-jima Island, including a reef called as Nakanose located in about 4km south-southwest of the eastern end of the island.

The systematic arrangements of fish families followed Nakabo (2002). Scientific names generally followed Nakabo (2002) with some modifications by recent taxonomic studies. Species in each family were arranged in alphabetical order of species names. Authorship and published year followed *Catalog of Fishes* on the website of the California Academy of Sciences, USA (<http://www.calacademy.org/research/ichthyology/catalog/>) except for the date of publication of *Fauna Japonica* (Temminck and Schlegel, 1843-1850) in which we followed Nakabo (2002: 1652). Standard Japanese names (*sensu* Senou, 2002b) followed Nakabo (2000), and were transliterated in the Hepburn system. Each standard Japanese name was showed in a brackets following a scientific name.

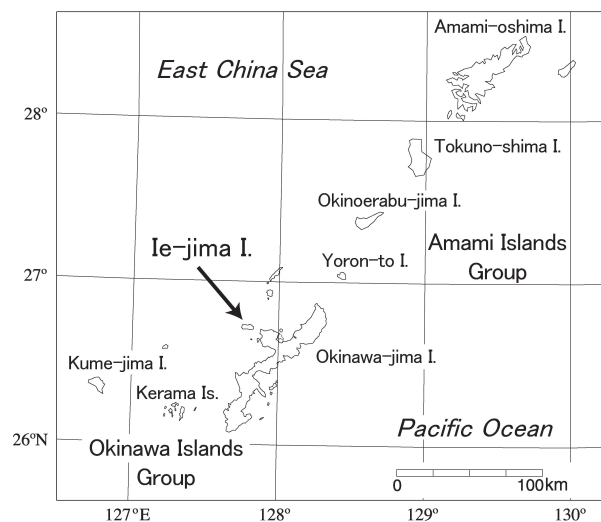


Fig. 1. Map showing position of Ie-jima Island.

¹⁾ Kanagawa Prefectural Museum of Natural History
499 Iryuda, Odawara, Kanagawa 250-0031, Japan
神奈川県立生命の星・地球博物館
〒250-0031 神奈川県小田原市入生田 499
senou@nh.kanagawa-museum.jp

²⁾ Volunteer of Fish Division, Kanagawa Prefectural
Museum of Natural History

³⁾ 1944 Higashiema, Ie-son, Kunigami-gun,
Okinawa 905-0502, Japan

All specimens were deposited in the collection of Kanagawa Prefectural Museum of Natural History (KPM-NI). Photographs of fishes were deposited at the Image Database of Fishes in the Kanagawa Prefectural Museum of Natural History (KPM-NR).

The list of fishes was compiled from our own collections, photographs, and literature sources. The following “Species List” includes 889 species belonging to 84 families of 20 orders, and species allocation to each family is shown in Table 1.

Species List

Order Lamniformes

Family Lamnidae

Isurus oxyrinchus Rafinesque, 1810 [Aozame]
KPM-NR 38346.

Order Carcharhiniformes

Family Carcharhinidae

Triaenodon obesus (Rüppell, 1837) [Nemuribuka]
KPM-NR 36643-36644.

Order Rajiformes

Family Dasyatidae

Dasyatis kuhlii (Müller et Henle, 1841) [Yakkoei]
KPM-NR 30717, 36646, 66185.

Taeniura meyeri Müller et Henle, 1841 [Madaraei]
KPM-NR 36645.

Family Myliobatidae

Mobula sp.
KPM-NR 38318.

Order Anguilliformes

Family Muraenidae

Echidna nebulosa (Ahl, 1789) [Kumoutsubo]
KPM-NR 30008, 31703, 65864, 80946.

Echidna polyzona (Richardson, 1845) [Shimaarashiutsubo]
KPM-NR 36548.

Echidna zebra (Shaw, 1797) [Zeburautsubo]
KPM-NR 31708, 36546.

Gymnothorax albimarginatus (Temminck et Schlegel, 1847)
[Herishiroutsubo]
KPM-NR 36547.

Gymnothorax buroensis (Bleeker, 1857) [Sangoutsubo]
KPM-NR 32438.

Gymnothorax chilospilus Bleeker, 1864 [Minamiutsubo]
KPM-NR 36649.

Gymnothorax chlorostigma (Kaup, 1856) [Hanabirautsubo]
KPM-NR 30013, 36648, 36867, 64077, 66242, 88887.

Gymnothorax enigmaticus McCosker et Randall, 1982 [Shimautsubo]
KPM-NR 21790.

Gymnothorax fimbriatus (Bennett, 1832) [Herigoishiutsubo]
KPM-NR 30011-30012, 31702.

Gymnothorax flavimarginatus (Rüppell, 1830) [Gomautsubo]
KPM-NR 30007, 31707.

Gymnothorax isigteena (Richardson, 1845) [Nisegoishiutsubo]
KPM-NR 30003, 30006, 31706, 61221.

Gymnothorax meleagris (Shaw, 1795) [Wakautsubo]
KPM-NI 4859; KPM-NR 30010, 32439, 50141, 61220.

Table 1. The number of species and species allocation to each family occurred around Ie-jima Island.

Family	No. of Species	% in Total
Gobiidae	112	12.6
Labridae	97	10.9
Pomacentridae	78	8.8
Apogonidae	48	5.4
Serranidae	45	5.1
Blenniidae	37	4.2
Chaetodontidae	32	3.6
Acanthuridae	27	3.0
Scaridae	25	2.8
Syngnathidae	21	2.4
Muraenidae	19	2.1
Pomacanthidae	18	2.0
Scorpaenidae	18	2.0
Holocentridae	17	1.9
Carangidae	16	1.8
Balistidae	15	1.7
Lutjanidae	14	1.6
Tripterygiidae	14	1.6
Cirrhitidae	12	1.3
Ptereleotridae	12	1.3
Monacanthidae	11	1.2
Tetraodontidae	11	1.2
Callionymidae	9	1.0
Nemipteridae	9	1.0
Pinguipedidae	9	1.0
others (<1.0%)	163	18.3
Total	889	100.0

Gymnothorax melanospilos (Bleeker, 1855) [Dokuutsubo]
KPM-NR 30001.

Gymnothorax margaritophorus Bleeker, 1864 [Shinjuutsubo]
KPM-NR 30117.

Gymnothorax thyrsoides (Richardson, 1845) [Sabitsubo]
KPM-NR 30009, 31704, 32440, 36381, 36647, 64047.

Gymnothorax undulatus (Lacepède, 1803) [Namiutsubo]
KPM-NR 22581.

Muraena pardalis Temminck et Schlegel, 1847 [Torautsubo]
KPM-NR 38344.

Rhinomuraena quaesita Garman, 1888 [Hanahigeutsubo]
KPM-NR 30014, 31705.

Scuticaria tigrina (Lesson 1828) [Moyokikaiutsubo]
KPM-NR 38357.

Family Ophichthidae

Apterichtus klazingai (Weber, 1913) (Fig. 2)
KPM-NR 10558, 36549.

Callechelys marmorata (Bleeker, 1853) [Monhimoumihebi]
KPM-NR 32441.

Myrichthys colubrinus (Boddaert, 1781) [Shimaumihebi]
KPM-NR 36650.

Pisodonophis cancrivorus (Richardson, 1848) [Minamihotatemihebi]
KPM-NR 31709.

Pisodonophis zophistius Jordan et Snyder, 1901 [Hotatemihebi]
KPM-NR 28525, 30015, 32442-32443, 64126, 66197.

Family Congridae

Gorgasia preclara Böhlke et Randall, 1981 [Nishikianago]
KPM-NR 31710.

Heteroconger hassi (Klausewitz et Eibl-Eibesfeldt, 1959) [Chinanago]
KPM-NR 32444, 36651, 63920.

Order Clupeiformes
Family Clupeidae

Herklotsichthys quadrimaculatus (Rüppell, 1837) [Mizun]
KPM-NR 36550.

Spratelloides gracilis (Temminck et Schlegel, 1846) [Kibinago]
KPM-NR 30757, 30761.

Order Gonorynchiformes
Family Chanidae

Chanos chanos (Forsskål, 1775) [Sabahi]
KPM-NR 28898, 38363.

Order Siluriformes
Family Plotosidae

Plotosus lineatus (Thunberg, 1787) [Gonzui]
KPM-NI 4981, 4999-5000; KPM-NR 30016, 31712, 32445,
50443-50444, 63995.

Order Aulopiformes
Family Synodontidae

Saurida gracilis (Quoy et Gaimard, 1824) [Madaresa]
KPM-NR 28543, 30019-30020, 31717-31718, 31722, 32446, 36654.

Saurida nebulosa Valenciennes, 1850 [Uchiuimimadaresa]
KPM-NR 36653.

Synodus binotatus Schultz, 1953 [Niteneso]
KPM-NI 4819; KPM-NR 50510.

Synodus dermatogenys Fowler, 1912 [Minamiakaeso]
KPM-NI 4746; KPM-NR 31714-31715, 36655, 50513, 88857.

Synodus rubromarmoratus Russell et Cressey, 1979
KPM-NR 31716, 31719, 31723.

Synodus variegatus (Lacepède, 1803) [Hitosujieso]
KPM-NR 30018, 30767, 31720-31721, 32447, 36657, 64025,
64104, 65835.



Fig. 2. *Apterichthys klazingai*, KPM-NR 36549, Ie-jima Island, 15m depth, photo by K. Yunokawa.

Order Lampridiformes
Family Trachipteridae

Zu cristatus (Bonelli, 1819) [Yukifurisodeuo]
KPM-NR 38333.

Order Ophidiiformes
Family Ophidiidae

Brotula multibarbata Temminck et Schlegel, 1847 [Itachiuo]
KPM-NR 30021, 36552, 36658.

Family Bythitidae

Grammonus sp.

Oligopus robustus: Senou and Yunokawa, 1998: 1.
KPM-NI 5258; KPM-NR 25706-25707.

Remarks. The specimen which is a species of the genus *Grammonus* was misidentified as *Oligopus robustus* (= *G. robustus* Smith et Radcliffe, 1913) by Senou and Yunokawa (1998). The specimen is under study of J. G. Nielsen.

Monothrix sp. (Fig. 3)

KPM-NI 2544; KPM-NR 50578.

Remarks. According to Nielsen *et al.* (1999), the specimen was identified as a species of the genus *Monothrix* Ogilby, 1897. Further study is necessary for identification in a species level.

Order Lophiiformes
Family Antennariidae

Antennarius coccineus (Lesson, 1831) [Urumaizariuo]
KPM-NR 30023, 31724.

Antennarius commerson (Latreille, 1804) [Omonizariuo]
KPM-NR 19602-19604, 22583, 30022, 31725, 32448.

Antennarius maculatus (Desjardins, 1840) [Kumadorizariuo]
KPM-NR 36553.

Antennarius rosaceus Smith et Radcliffe, 1912 [Enagaizariuo]
KPM-NI 8429; KPM-NR 54253.

Antennatus tuberosus (Cuvier, 1817) [Izariuomodoki]
KPM-NR 22584.

Histrio histrio (Linnaeus, 1758) [Hanaokoze]
KPM-NR 36659, 38330.

Order Beryciformes
Family Holocentridae

Neoniphon opercularis (Valenciennes, 1831) [Hireguroittodai]
KPM-NR 30033, 36663-36664.

Neoniphon sammara (Forsskål, 1775) [Ukeguchiittodai]
KPM-NI 10662-10665; KPM-NR 28554, 30030, 31736, 36665, 65844.

Myripristis amaena (Castelnau, 1873) [Amematsukasa]
KPM-NR 88913.

Myripristis botche Cuvier, 1829 [Urokomatsukasa]
KPM-NR 30039, 31733-31735.



Fig. 3. *Monothrix* sp., KPM-NI 2544 (= KPM-NR 50578), Ie-jima Island, 7m depth, photo by H. Senou.

- Myripristis chryseres* Jordan et Evermann, 1903 [Kibirematsukasa]
KPM-NR 32455.
- Myripristis greenfieldi* Randall et Yamakawa, 1996 [Tsumarimatsukasa]
KPM-NR 30038, 36668.
- Myripristis kuntzei* Valenciennes, 1831 [Kuroobimatsukasa]
KPM-NR 30733, 31728, 31731, 36667, 65787, 66260, 88912,
88917-88918.
- Myripristis murdjan* (Forsskål, 1775) [Yogorematsukasa]
KPM-NR 30037, 31729-31730, 32454, 36666, 63939, 66259,
88909-88911, 88915, 88919-88923, 88925.
- Myripristis violacea* Bleeker, 1851 [Seguromatsukasa]
KPM-NR 30031, 30036.
- Myripristis vittata* Valenciennes, 1831 [Benimatsukasa]
KPM-NR 30034-30035, 31732, 36669, 63979, 65780, 80948,
88834, 88914, 88916.
- Sargocentron caudimaculatum* (Rüppell, 1838) [Kurakakeebisu]
KPM-NR 30027-30028, 31737, 32453, 64010.
- Sargocentron diadema* (Lacepède, 1802) [Nijieebisu]
KPM-NR 30737, 36661.
- Sargocentron ittodai* (Jordan et Fowler, 1902) [Terieebisu]
KPM-NI 4858, 10709; KPM-NR 22585, 30029, 32451, 36662, 50711.
- Sargocentron melanopilos* (Bleeker, 1858) [Sumitsukikanoko]
KPM-NR 30032, 32452.
- Sargocentron punctatissimum* (Cuvier, 1829) [Hoshieebisu]
KPM-NI 4852, 4925, 8473; KPM-NR 36660, 50714, 54297.
- Sargocentron rubrum* (Forsskål, 1775) [Ayameebisu]
KPM-NR 31738.
- Sargocentron violaceum* (Bleeker, 1853) [Sumireebisu]
KPM-NR 29969.

Family Monocentridae

- Monocentris japonica* (Houttuyn, 1782) [Matsukasauo]
KPM-NI 10868; KPM-NR 30026, 36556.

Order Gasterosteiformes

Family Pegasidae

- Eurypegasis draconis* (Linnaeus, 1766) [Umitengu]
KPM-NR 36557.

Family Aulostomidae

- Aulostomus chinensis* (Linnaeus, 1766) [Herayagara]
KPM-NR 30048, 31739, 65784, 65789, 66205.

Family Fistulariidae

- Fistularia commersonii* Rüppell, 1838 [Aoyagara]
KPM-NR 30040, 31740, 65778.

Family Centriscidae

- Aeoliscus strigatus* (Günther, 1861) [Hekoayu]
KPM-NI 8532-8535; KPM-NR 30101, 31741, 54328-54331, 63994.

Family Solenostomidae

- Solenostomus cyanopterus* Bleeker, 1854 [Kamisoriuo]
KPM-NR 32456, 88670.
- Solenostomus leptosoma* Tanaka, 1908 [Hosofurairuo]
KPM-NR 27737.
- Solenostomus paradoxus* (Pallas, 1770) [Nishikifurairuo]
KPM-NR 32457.

Family Syngnathidae

- Choeroichthys brachysoma* (Bleeker, 1855) [Hashinagachigoyoji]
KPM-NR 36562.
- Corythoichthys amplexus* Dawson et Randall, 1975 [Obiishiyoji]
KPM-NR 31743.
- Corythoichthys haematopterus* (Bleeker, 1851) [Ishiyoji]
KPM-NI 10678; KPM-NR 30045, 31742, 32458, 36560.
- Corythoichthys schultzi* Herald, 1953 [Kuchinagaishiyoji]
KPM-NR 30046.
- Doryrhamphus (Doryrhamphus) excisus excisus* Kaup, 1856
[Hibashiyoji]
KPM-NI 5077, 8455; KPM-NR 36561, 54279.
- Doryrhamphus (Doryrhamphus) japonicus* Araga et Yoshino, 1975
[Nokogiriyoji]
KPM-NI 4754; KPM-NR 50779.
- Doryrhamphus (Dunckerocampus) dactylophorus* (Bleeker, 1853)
[Oiranyoji]
KPM-NI 4055, 4770, 4836, 8531; KPM-NR 30044, 31744,
32460, 50766-50768, 54327.
- Halicampus dunckeri* (Chabanaud, 1929) [Himehosoumiyakko]
KPM-NR 36671, 64001.
- Halicampus macrorhynchus* Bamber, 1915 [Tatsuumiyakko]
KPM-NR 36559, 65868, 88659, 88673.
- Halicampus nitidus* (Günther, 1873) [Torafuomiyakko]
KPM-NR 36558.
- Hippocampus bargibanti* Whitley, 1970
KPM-NR 38358-38360, 61222, 66247-66248, 88884.
Remarks. T. Yoshino (URM) and others are preparing a redescription
of this species including its relatives.
- Hippocampus kelloggi* Jordan et Snyder, 1901 [Oumiuma]
KPM-NR 36563.
- Hippocampus kuda* Bleeker, 1852 [Kuroumiuma]
KPM-NR 32461.
- Hippocampus* sp. 1 (Fig. 4)
KPM-NR 36564.
Remarks. A specimen of this species was collected from the
Kerama Islands. H. Senou and K. Matsuura (NSMT) are preparing a
description of this undescribed species.



Fig. 4. *Hippocampus* sp. 1, KPM-NR 36564, Ie-jima Island, photo by K. Yunokawa.



Fig. 5. *Hippocampus* sp. 2, KPM-NR 88897, Ie-jim Island, 21m depth, photo by T. Nomura.

Hippocampus sp. 2 (Fig. 5)

KPM-NR 88897-88898.

Remarks. The photographs are similar to *Hippocampus colemani* described by Kuitert (2003). Specimens are necessary for identification, but have not been obtained yet from Japan.

Micrognathus andersonii (Bleeker, 1858) [Kammuriyoji]

Micrognathus andersonii: Senou and Yano, 1999: 3, fig. 2.
KPM-NI 4076, 4965; KPM-NR 50806-50807.

Microphis (Coelonotus) leiaspis (Bleeker, 1853) [Issenyoji]

KPM-NI 4735; KPM-NR 50810.

Phoxocampus belcheri (Kaup, 1856) [Boyoji]

KPM-NR 32459.

Phoxocampus diacanthus (Schultz 1943) [Hachijoboyoji]

KPM-NR 38356.

Syngnathoides biaculeatus (Bloch, 1785) [Togeyoji]

KPM-NI 8530; KPM-NR 36672, 54326, 88873.

Trachyrhamphus bicoarctatus (Bleeker, 1857) [Wakayoji]

KPM-NR 30043, 31745.

Order Mugiliformes

Family Mugilidae

Crenimugil crenilabis (Forsskål, 1775) [Furaibora]

KPM-NR 36438, 38354.

Ellochelon vaigiensis (Quoy et Gaimard, 1825) [Onibora]

KPM-NI 10846-10848.

Order Atheriniformes

Family Atherinidae

Atherinomorus lacunosus (Forster, 1801) [Yakushimawashi]

KPM-NR 30025, 31727.

Hypoatherina woodwardi (Jordan et Starks, 1901) [Okinawatogoro]

KPM-NR 36551.

Order Beloniformes

Family Belonidae

Strongylura incisa (Valenciennes, 1846) [Ryukyudatsu]

KPM-NI 8357-8358; KPM-NR 53475-53476.

Tylosurus crocodilus crocodilus (Péron et Lesueur, 1821) [Okizayori]

KPM-NR 30760, 36554-36555, 61223.

Tylosurus melanotus melanotus (Bleeker, 1850) [Tenjikudatsu]

KPM-NI 4701, 10838; KPM-NR 50644.

Order Scorpaeniformes

Family Scorpaenidae

Dendrochirus biocellatus (Fowler, 1938) [Hireboshiminokasago]
KPM-NR 38319, 61224, 80933.

Dendrochirus brachypterus (Cuvier, 1829) [Shimahimeyamanokami]
KPM-NR 32463-32464.

Dendrochirus zebra (Cuvier, 1829) [Kirimmino]
KPM-NR 30050-30051, 31749, 31756, 32465, 64109, 65839, 86133.

Parascorpaena mcadamsi (Fowler, 1938) [Ittenfusakasago]
KPM-NI 4875-4876.

Parascorpaena mossambica (Peters, 1855) [Nettaifusakasago]
KPM-NI 4045; KPM-NR 50845.

Pterois antennata (Bloch, 1787) [Nettaininokasago]
KPM-NR 19296, 19348, 30049, 31757.

Pterois volitans (Linnaeus, 1758) [Hanaminokasago]
KPM-NR 28536, 30052, 31746-31748, 32462, 88895.

Scorpaenodes guamensis (Quoy et Gaimard, 1824) [Guamukasago]
KPM-NI 8470; KPM-NR 54294.

Scorpaenodes hirsutus (Smith, 1957) [Mamesangokasago]
KPM-NI 4834, 4951, 5037; KPM-NR 9788, 50866-50868.

Scorpaenodes parvipinnis (Garrett, 1864) [Himesangokasago]
KPM-NI 4855; KPM-NR 9789, 31755, 50877.

Scorpaenodes scaber (Ramsay et Ogilby, 1886) [Sangokasago]
KPM-NI 4725, 8471, 10669-10670; KPM-NR 50884, 54295.

Scorpaenopsis cirrosa (Thunberg, 1793) [Onikasago]
KPM-NR 31751.

Scorpaenopsis diabolus (Cuvier, 1829) [Niraikasago]
KPM-NR 64045.

Scorpaenopsis neglecta Heckel, 1837 [Satsumakasago]
KPM-NR 36676.

Sebastapistes cyanostigma (Bleeker, 1856) [Kasurifusakasago]
KPM-NI 4910; KPM-NR 10313, 30053, 30062, 31753, 86145.

Sebastapistes mauritiana (Cuvier, 1829) [Hachijofusakasago]
KPM-NR 36566.

Sebastapistes tinkhami (Fowler, 1946) [Niramikasago]
KPM-NI 4871, 4883, 5051; KPM-NR 22301, 30054, 31754, 50907, 50908.

Taenianotus triacanthus Lacepède, 1802 [Hadakahaokoze]
KPM-NR 28526, 30063, 31750, 31759, 36675, 64023.

Family Synanceiidae

Inimicus didactylus (Pallas, 1769) [Himeoniokoze]
KPM-NR 36568, 61225, 63999.

Synanceia verrucosa Bloch et Schneider, 1801 [Onidarumaokoze]
KPM-NR 28539, 31760.

Family Tetrarogidae

Ablabys taenianotus (Cuvier, 1829) [Tsumajirookoze]
KPM-NR 30064, 36569-36570, 61226.

Family Caracanthidae

Caracanthus maculatus (Gray, 1831) [Dangookoze]
KPM-NI 4097, 4829; KPM-NR 30065, 31761, 50970-50971.

Family Platycephalidae

Cymbacephalus beauforti (Knapp, 1973) [Emmagochi]
KPM-NR 27734, 36571.



Fig. 6. *Onigocia bimaculata*, KPM-NR 61227, Ie-jima Island, 15m depth, photo by H. Kodato.

Onigocia bimaculata Knapp, Imamura et Sakashita, 2000 [Shoshionigochi] (Fig. 6)
KPM-NR 61227.

Remarks. *Onigocia bimaculata* was newly added to Japanese fish fauna by Knapp *et al.* (2000). We identified KPM-NR 61277 which has a bilobed iris lappet and a prominent black blotch on upper surface near base of pelvic fin as this species.

Thysanophrys celebica (Bleeker, 1854) [Japanese name: Serebesugochi]
KPM-NR 27731.

Order Perciformes Family Serranidae

Aethaloperca rogae (Forsskål, 1775) [Kurohata]
KPM-NR 36575, 63924.

Anyperodon leucogrammicus (Valenciennes, 1828) [Azukihata]
KPM-NR 38316.

Belonoperca chabanaudi Fowler et Bean, 1930 [Yamisuzuki]
KPM-NR 30100, 31797, 36685, 61231-61232.

Cephalopholis argus Bloch et Schneider, 1801 [Aonomehata]
KPM-NR 30066, 32470, 64062, 65790.

Cephalopholis miniata (Forsskål, 1775) [Yukatahata]
KPM-NR 30078, 36385, 36678, 63927, 64114, 64118.

Cephalopholis polleni (Bleeker, 1868) [Minamihata]
KPM-NR 30076, 31785, 32473, 88651.

Cephalopholis sexmaculata (Rüppell, 1830) [Kokuhanhata]
KPM-NR 30067, 36572.

Cephalopholis sonnerati (Valenciennes, 1828) [Azahata]
KPM-NR 31788.

Cephalopholis spiloparaea (Valenciennes, 1828) [Akahana]
KPM-NR 30082, 36384, 65781, 88839.

Cephalopholis urodeta (Forster, 1801) [Nijihata]
KPM-NR 30081, 30083, 30752, 36679, 65826.

Chromileptes altivelis (Valenciennes, 1828) [Sarasahata]
KPM-NR 31787.

Diploprion bifasciatum Cuvier, 1828 [Kihassoku]
KPM-NR 30099, 31796, 61233, 66213.

Epinephelus cyanopodus (Richardson, 1846) [Tsuchihozeri]
KPM-NR 30075, 36383, 36682-36683.

Epinephelus fasciatus (Forsskål, 1775) [Akahata]
KPM-NI 4899; KPM-NR 30080, 31791, 65837, 88841.

Epinephelus hexagonatus (Forster, 1801) [Ishigakihata]
KPM-NR 22586, 30073-30074, 31762, 88694.

Epinephelus macrospilos (Bleeker, 1855) [Kibirehata]
KPM-NR 61230.

Epinephelus maculatus (Bloch, 1790) [Shirobuchihata]
KPM-NI 4070; KPM-NR 30079, 30773, 31765-31766,
32467-32468, 51043.

Epinephelus malabaricus (Bloch et Schneider, 1801) [Yaitohata]
KPM-NR 32471, 36680.

Epinephelus merra Bloch, 1793 [Kammonhata]
KPM-NI 11793; KPM-NR 30071-30072, 31763-31764, 31786.

Epinephelus ongus (Bloch, 1790) [Namihata]
KPM-NR 30077, 31794, 36681.

Epinephelus polyphkadion (Bleeker, 1849) [Madarahata]
KPM-NR 38325.

Gracila albomarginata (Fowler et Bean, 1930) [Tatesujihata]
KPM-NR 31792, 32474-32475, 36574.

Grammistes sexlineatus (Thunberg, 1792) [Nunosarashi]
KPM-NI 4897, 8431; KPM-NR 30098, 31795, 32481, 54255.

Plectranthias altipinnatus Katayama et Masuda, 1980 [Chigohanadai]
KPM-NR 38338.

Plectranthias longimanus (Weber, 1913) [Chibihanadai]
KPM-NI 2531, 4832-4833, 4927, 10742, 10810; KPM-NR 32479,
51067-51069.

Plectranthias pelicieri Randall et Shimizu, 1994 [Osharehanadai]
Plectranthias pelicieri: Senou and Yunokawa, 1995: 4, figs. 1, 2.
KPM-NI 3; KPM-NR 9795, 30097, 31767-31769.

Plectranthias sp. (Fig. 7)
KPM-NI 5041; KPM-NR 51070.

Remarks. A specimen was collected at a depth of 51m on 18 June 1998. It is similar to *Plectranthias longimanus* in having several black spots along dorsal, posterior and ventral edges of caudal peduncle. However, this undescribed species is easily distinguished from *P. longimanus* in having its greater depth of body and reddish lateral markings disappearing in spirit.

Plectropomus laevis (Lacepède, 1801) [Kokuhanara]
KPM-NR 31784, 32469, 36573, 36677.

Plectropomus leopardus (Lacepède, 1802) [Sujiara]
KPM-NR 30070, 30118, 31781-31782, 64071, 80954.

Pogonoperca punctata (Valenciennes, 1830) [Agohata]
KPM-NR 21791, 61234.

Pseudanthias bicolor (Randall, 1979) [Futairohanagoi]
KPM-NR 31793, 32478, 36684.

Pseudanthias cooperi (Regan, 1902) [Kashiwahanadai]
KPM-NR 30089-30090, 31778, 64095, 65809.

Pseudanthias fasciatus (Kamohara, 1954) [Sujihanadai]
KPM-NR 30094, 36576.

Pseudanthias flavoguttatus (Katayama et Masuda, 1980) [Asahihanagoi]
KPM-NR 36577.



Fig. 7. *Plectranthias* sp., KPM-NI 5041 (= KPM-NR 51070), Ie-jima Island, 51m depth, photo by H. Senou.

- Pseudanthias hypselosoma* Bleeker, 1878 [Keramahanadai]
KPM-NR 30084-30085, 30763, 31776-31777.
- Pseudanthias pascalus* (Jordan et Tanaka, 1927) [Hanagoi]
KPM-NR 10329, 30095, 30740, 31779-31780.
- Pseudanthias pleurotaenia* (Bleeker, 1857) [Sumirenagahanadai]
KPM-NR 10309-10310, 30091-30092, 30722, 31775.
- Pseudanthias randalli* (Lubbock et Allen, 1978) [Fuchidorihanadai]
Pseudanthias randalli: Yunokawa, 1992: 6, fig. 3.
KPM-NR 30086, 31789.
- Pseudanthias smithvanizi* (Randall et Lubbock, 1981) [Otenhanagoi]
KPM-NR 38314.
- Pseudanthias* sp. of Senou, 2002a [Benihanadai]
KPM-NI 4769; KPM-NR 30087-30088, 31774, 32476-32477,
51085, 61228-61229, 88675.
- Pseudanthias squamipinnis* (Peters, 1855) [Kingyohanadai]
KPM-NI 4809, 8441; KPM-NR 9796-9797, 19424-19425, 30093,
30741-30742, 31773, 51092, 54265.
- Pseudogramma polyacanthum* (Bleeker, 1856) [Togemegisu]
KPM-NI 4804, 8438-8439; KPM-NR 51210, 54262-54263.
- Serranocirrhitus latus* Watanabe, 1949 [Hanagombe]
Serranocirrhitus latus: Yunokawa, 1991: 6, fig. 3.
KPM-NR 30096, 30727, 31770-31772, 31790, 32480.
- Variola albimarginata* Baissac, 1953 [Ojirobarahata]
KPM-NR 66246.
- Variola louti* (Forsskål, 1775) [Barahata]
KPM-NR 19513, 19517, 30068-30069, 31783, 32472, 65806, 65824.

Family Pseudochromidae

- Labracinus cyclophthalma* (Müller et Troschel, 1849) [Megisu]
KPM-NI 10667, 10706, 10790; KPM-NR 30102-30103, 31800,
36686, 80944.
- Pseudochromis cyanotaenia* Bleeker, 1857 [Ryukyunesuzume]
KPM-NI 4778, 4797, 4824, 4872, 4911, 4948, 5027, 5038; KPM-
NR 17024, 30105, 31799, 31801, 51174-51178.
- Pseudochromis fuscus* Müller et Troschel, 1849 [Sedakanisesuzume]
KPM-NI 10722; KPM-NR 16540, 16542, 30106, 31802,
36687-36688, 88863.
- Pseudochromis marshallensis* Schultz, 1953 [Hoshinisesuzume]
KPM-NI 4086, 4112, 4771; KPM-NR 22302, 30107, 51188,
51190-51191, 88858.
- Pseudochromis porphyreus* Lubbock et Goldman, 1974
[Kurenainisesuzume]
KPM-NI 4093, 4784, 4818, 10824, 10879; KPM-NR 28527,
30104, 31798, 51193-51194, 51195, 61235.
- Pseudochromis* sp. (Fig. 8)
KPM-NR 8325.

Remarks. This species is similar to *Pseudochromis tapeinosoma* Bleeker, 1853, but it differs in having black and white markings on top of head and snout, and black marginal band on dorsal fin. Specimens of this species have not been obtained yet from the Japanese waters.

- Pseudochromis tapeinosoma* Bleeker, 1853 [Katsuironisesuzume]
KPM-NI 8457-8458, 8506; KPM-NR 54281-54282.

Family Pseudoplesiopidae

- Amsichthys knighti* (Allen 1987) [Ometanabatamegisu]
KPM-NI 10751, 10855; KPM-NR 31804-31806, 32482.
- Lubbockichthys tanakai* Gill et Senou, 2002
[Obikinuhadatanabatamegisu]
Lubbockichthys tanakai Gill and Senou, 2002: 2, fig. 1 (type locality:
Ie-jima Island).
KPM-NI 2522 (holotype); KPM-NR 9791, 21792, 22014, 30108,



Fig. 8. *Pseudochromis* sp., KPM-NR 8325, Ie-jima Island, 3m depth, photo by A. Mishiku.

30792, 51197.

- Pseudoplesiops rosae* Schultz, 1943 [Tanabatamegisu]
KPM-NI 8414-8416; KPM-NR 54239-54241.

Family Plesiopidae

- Assessor randalli* Allen et Kuitar, 1976 [Tsubametanabatauo]
KPM-NR 30111, 31808.
- Belonepterygion fasciolatum* (Ogilby, 1889) [Togetanabatauo]
KPM-NR 38361.
- Callopleysiops altivelis* (Steindachner, 1903) [Shimofuritanabatauo]
KPM-NI 4865, 5008, 5023, 10867; KPM-NR 10326, 30110, 31807,
51125-51127, 86234.
- Plesiops coeruleolineatus* Rüppell, 1835 [Tanabatauo]
KPM-NI 2543, 4040, 8459-8460, 8513; KPM-NR 36579,
51134-51135, 54283-54284, 61236.

Family Priacanthidae

- Heteropriacanthus cruentatus* (Lacepède, 1801) [Gomahirekintoki]
KPM-NR 29582, 30114-30115, 32483, 61237, 88693, 88907.
- Priacanthus hamrur* (Forsskål, 1775) [Hosekikintoki]
KPM-NR 30116, 31809, 36580.

Family Apogonidae

- Apogon angustatus* (Smith et Radcliffe, 1911) [Usujimaishimochi]
KPM-NI 4782, 4843-4846, 10822; KPM-NR 51308-51312.
- Apogon apogonides* (Bleeker, 1856) [Aohanatenjikudai]
KPM-NR 38324.
- Apogon aureus* (Lacepède, 1802) [Aosujitenjikudai]
KPM-NR 30161, 31844.
- Apogon bandanensis* Bleeker, 1854 [Bandaishimochi]
KPM-NI 4021-4022, 4026, 4736-4738; KPM-NR 30162-30164,
36386, 51316-51321.
- Apogon caudicinctus* Randall et Smith, 1988 [Togenagaishimochi]
KPM-NI 2525, 4882; KPM-NR 31864, 51326.
- Apogon cheni* Hayashi, 1990 [Munahoshiishimochi]
Apogon cheni Hayashi, 1990: 12, figs. 3, 4b (type locality: off
north of Ie-jima Island).
KPM-NR 38345.

- Apogon cookii* Macleay, 1881 [Sujiiishimochi]
KPM-NI 8508, 10788, 10797-10798; KPM-NR 36696-36697.
- Apogon crassiceps* Garman, 1903 [Akanetenjikudai]
Apogon crassiceps: Nomura, 1995: 1.
KPM-NI 2524; KPM-NR 30147, 31835-31836, 31865, 51332.
- Apogon cyanosoma* Bleeker, 1853 [Akaoshikinsenshimochi]
KPM-NI 4939, 4944; KPM-NR 51334-51335.
- Apogon dispar* Fraser et Randall, 1976 [Kaburayatenjikudai]
KPM-NR 30152, 31834, 63981, 66231.
- Apogon doederleini* Jordan et Snyder, 1901 [Osujiiishimochi]
KPM-NI 4019; KPM-NR 30131-30132, 31842-31843, 51344.
- Apogon doryssa* (Jordan et Seale, 1906) [Yariishimochi]
KPM-NI 4837; KPM-NR 51347.
- Apogon erythrinus* Snyder, 1904 [Ryukyuyaraiishimochi]
KPM-NI 4789, 4841, 4894-4896, 5011, 5015-5016, 5048, 10858;
KPM-NR 51351-51354, 51356.
- Apogon evermanni* Jordan et Snyder, 1904 [Tomarihiirotenjikudai]
Apogon evermanni: Kodato, 2001: 6, fig. 2.
KPM-NR 30137, 31826, 31856-31857, 36695.
- Apogon exostigma* (Jordan et Starks, 1906) [Yukataishimochi]
KPM-NI 4970; KPM-NR 30145, 31828-31829, 31858-31859, 51360.
- Apogon fraenatus* Valenciennes, 1832 [Hitosujiiishimochi]
KPM-NI 4013, 5006, 8426, 8570, 10776; KPM-NR 30146,
32488-32489, 51362-51363, 54250, 54359.
- Apogon fuscus* Quoy et Gaimard, 1825 [Ogurotenjikudai]
KPM-NI 4034, 8427, 8449, 8560; KPM-NR 51365, 54251, 54273,
54350.
- Apogon gilberti* (Jordan et Seale, 1905) [Usumomotenjikudai]
KPM-NI 4012, 4016; KPM-NR 22592, 30148, 31872, 51366.
- Apogon guamensis* Valenciennes, 1832 [Hososujinamidatenjikudai]
KPM-NI 10659-10661, 10688; KPM-NR 31849.
- Apogon kallopterus* Bleeker, 1856 [Kasuriishimochi]
KPM-NI 4105, 10743, 10833-10834; KPM-NR 19338, 30142-30144,
30746, 31827, 32491, 51381, 63977.
- Apogon kominatoensis* Ebina, 1934 [Kominatotenjikudai]
KPM-NI 4772, 4817, 4850, 10744-10745, 10859-10860; KPM-NR
30153, 51383-51385.
- Apogon leptacanthus* Bleeker, 1856-1857 [Itohikitenjikudai]
KPM-NI 8573-8575; KPM-NR 30149-30150, 31832-31833,
31861-31863, 54362-54364, 61239.
- Apogon nigrofasciatus* Lachner, 1953 [Minamifutosujiiishimochi]
KPM-NI 4135, 4739, 8509, 8559; KPM-NR 22595-22596,
30157-30158, 31867, 51404-51405, 54349.
- Apogon notatus* (Houttuyn, 1782) [Kurohoshiishimochi]
KPM-NR 38350.
- Apogon novemfasciatus* Cuvier, 1828 [Tasujiiishimochi]
KPM-NI 4922-4923, 5043, 5060; KPM-NR 51406.
- Apogon properuptus* (Whitley, 1964) [Kinsenshimochi]
KPM-NI 4006, 4014-4015, 4709, 4971-4972, 4975, 4984,
8423-8425, 8447, 8450; KPM-NR 30155-30156, 31839-31841, 31866,
51409-51416, 54248-54249, 54271, 54274, 61242-61243, 64054.
- Apogon rhodopterus* Bleeker, 1852 [Akahireishimochi]
KPM-NR 22590.
- Apogon sangiensis* Bleeker, 1857 [Sangiruishimochi]
KPM-NI 8577, 8579; KPM-NR 30154, 31837-31838, 54366, 54368,
61240-61241.
- Apogon savayensis* Günther, 1872 [Namidatenjikudai]
KPM-NI 4035-4036; KPM-NR 31845-31847, 31868-31869,
51419-51420, 61244.
- Apogon semiornatus* Peters, 1876 [Yamitenjikudai]
KPM-NI 4830; KPM-NR 51431.
- Apogon trimaculatus* Cuvier, 1828 [Misujiaakahireishimochi]
KPM-NR 22589, 31830-31831, 31860.
- Apogonichthys waikiki* Jordan et Evermann, 1903 [Hawaimatoishimochi]
KPM-NR 22304.
- Archamia dispilus* Lachner, 1951 [Sumitsukiatohikitenjikudai]
KPM-NR 22598, 30140, 31851-31854, 64122.
- Archamia zosterophora* (Bleeker, 1856) [Kuroobiatohikitenjikudai]
Archamia zosterophora: Kodato, 2001: 6, fig. 1.
KPM-NR 30141, 31825, 31855, 32492.
- Cercamia eremia* (Allen, 1987) [Sakuratenjikudai]
Cercamia eremia: Nomura, 1996: 1.
KPM-NI 4838, 4908, 10757, 10764-10766, 10819-10820; KPM-NR
8329, 22591, 30121, 31810-31812, 31850, 51238.
- Cheilodipterus intermedius* Gon, 1993 [Sudareyaraiishimochi]
KPM-NR 30123, 30125, 30129, 31817-31818, 65843.
- Cheilodipterus macrodon* (Lacepède, 1802) [Ryukyuyaraiishimochi]
KPM-NI 10854; KPM-NR 22597, 30124, 30134, 31819-31820,
32484-32485, 63978, 88836.
- Cheilodipterus quinquelineatus* Cuvier, 1828 [Yaraiishimochi]
KPM-NI 8572, 4708, 4983, 10712; KPM-NR 30127-30128, 30130,
30747, 31813-31816, 32486, 51239-51240, 54361, 61238.
- Cheilodipterus artus* Smith, 1961 [Kasumiyaraiishimochi]
KPM-NR 30126.
- Foa brachygramma* (Jenkins, 1903) [Taiwammatoishimochi]
KPM-NI 4098, 4967-4968, 4994; KPM-NR 17027, 22305, 30135,
31821, 36691-36692, 51253-51255, 51257.
- Fowleria isostigma* (Jordan et Seale, 1906) [Nahamatoishimochi]
KPM-NI 4126, 8408; KPM-NR 22587, 36690.
- Fowleria variegata* (Valenciennes, 1832) [Shibori]
KPM-NI 4080, 4986, 8578; KPM-NR 22588, 29584, 30136, 32490,
51273, 51435, 54367.
- Pseudamia gelatinosa* Smith, 1955 [Numeritenjikudai]
Pseudamia gelatinosa: Kodato, 2001: 6, fig. 3.
KPM-NI 4118; KPM-NR 30165, 31871, 51277.
- Pseudamia hayashii* Randall, Lachner et Fraser, 1985
[Sabikudaribozugisumodoki]
KPM-NR 36582.
- Pseudamia zonata* Randall, Lachner et Fraser, 1985
[Shimakudaribozugisumodoki]
Pseudamia zonata: Yunokawa, 1991: 6, fig. 2.
KPM-NR 38337, 61245.
- Pseudamiops gracilicauda* (Lachner, 1953) [Kudaribozugisumodoki]
KPM-NI 10773.
- Rhabdamia gracilis* (Bleeker, 1856) [Sukashitenjikudai]
KPM-NR 10319, 30138-30139, 31822-31824, 64121.
- Siphamia versicolor* (Smith et Radcliffe, 1911) [Hikariishimochi]
KPM-NI 4000, 4973-4974, 4977-4979; KPM-NR 29586, 36583,
51290-51291.

Family Malacanthidae

- Hoplolatilus chluptyi* Klauswitz, McCosker, Randall et Zetzsche,
1978 [Tamamushisangoamada]
Hoplolatilus chluptyi: Senou et al., 1997: 2, figs. 1-4.
KPM-NI 28; KPM-NR 9800-9803, 22303, 30168, 31873-31874,
31878.
- Hoplolatilus cuniculus* Randall et Dooley, 1974 [Okinawasangoamada]
KPM-NI 4121, 4856; KPM-NR 10323, 28464, 30167, 31877,
51487-51488, 61264, 64084, 80956.



Fig. 9. *Hoplostiltilus starcki*, KPM-NR 61815, Ie-jima Island, 32m depth, photo by H. Takano.

Hoplostiltilus marcosi Burgess, 1978 [Akaobisangoamadaï]
KPM-NI 4765, 4954; KPM-NR 30169, 31875-31876, 31881, 51489-51490.

Hoplostiltilus starcki Randall et Dooley, 1974 (Fig. 9)
KPM-NR 61815 (photographed at a depth of 32m by H. Takano on 25 June 2001).

Remarks. The species is easily identified by having a blue head. Specimens of this species have not been obtained yet from the Japanese waters.

Malacanthus brevisrostris Guichenot, 1848 [Yaseamadaï]
KPM-NR 30170, 31880.

Malacanthus latovittatus (Lacepède, 1801) [Kitsuneamadaï]
KPM-NI 4955; KPM-NR 30171-30172, 31879, 51493, 66198.

Family Echeneidae

Echeneis naucrates Linnaeus, 1758 [Kobanzame]
KPM-NR 30655-30656, 36408, 36637, 65829.

Family Rachycentridae

Rachycentron canadum (Linnaeus, 1766) [Sugi]
KPM-NR 30173.

Family Carangidae

- Alectis ciliaris* (Bloch, 1787) [Itohikiaji]
KPM-NR 36389, 63969-63970.
- Carangoides coeruleopinnatus* (Rüppell, 1830) [Maruhiraaji]
KPM-NR 38327.
- Carangoides ferdau* (Forsskål, 1775) [Kurohiraaji]
KPM-NR 36701, 63983.
- Carangoides fulvoguttatus* (Forsskål, 1775) [Hoshikaiwari]
KPM-NR 38339-38340.
- Carangoides plagiotaenia* Bleeker, 1857 [Indokaiwari]
KPM-NR 30174, 36699-36700, 66176.
- Caranx ignobilis* (Forsskål, 1775) [Roninaji]
KPM-NR 38336.
- Caranx lugubris* Poey, 1860 [Kappore]
KPM-NR 38317.
- Caranx melampygus* Cuvier, 1833 [Kasumiaji]
KPM-NR 32496, 38355.
- Decapterus macarellus* (Cuvier, 1833) [Kusayamoro]
KPM-NR 30758.
- Elagatis bipinnulata* (Quoy et Gaimard, 1825) [Tsumuburi]
KPM-NR 32495.

- Kaiwarinus equula* (Temminck et Schlegel, 1844) [Kaiwari]
KPM-NR 31883.
- Pseudocaranx dentex* (Bloch et Schneider, 1801) [Shimaaji]
KPM-NR 31882, 38351.
- Scomberoides lysan* (Forsskål, 1775) [Ikekatsuo]
KPM-NR 36868.
- Seriola rivoliana* Valenciennes, 1833 [Hirenagakampachi]
KPM-NR 30725, 30759.
- Trachinotus baillonii* (Lacepède, 1801) [Kobanaji]
KPM-NR 36585.
- Trachurus japonicus* (Temminck et Schlegel, 1844) [Maaji]
KPM-NR 88692.

Family Lutjanidae

- Aphareus furca* (Lacepède, 1801) [Ishifuedai]
KPM-NR 30180, 36387, 36588, 36704, 64163.
- Aprion virescens* Valenciennes, 1830 [Aochibiki]
KPM-NR 38362, 65845.
- Lutjanus bohar* (Forsskål, 1775) [Barafuedai]
KPM-NR 19433, 32498.
- Lutjanus decussatus* (Cuvier, 1828) [Amimefuedai]
KPM-NR 36586.
- Lutjanus fulvus* (Forster, 1801) [Okifuedai]
KPM-NI 10812-10813; KPM-NR 30179, 31888, 32499.
- Lutjanus gibbus* (Forsskål, 1775) [Himefuedai]
KPM-NI 4990; KPM-NR 30178, 31886-31887, 51711.
- Lutjanus johnii* (Bloch, 1782) (Fig. 10)
KPM-NR 36702.

Remarks. This species is similar to *Lutjanus ehrenbergii* (Peters, 1869), but it is easily distinguished from the latter by having a dark spot in each center on the lateral scales and no lateral stripes on body. Specimens of this species have not been obtained yet from the Japanese waters.

Lutjanus kasmira (Forsskål, 1775) [Yosujifuedai]
KPM-NR 30176, 31885, 32497.

Lutjanus monostigma (Cuvier, 1828) [Ittenfuedai]
KPM-NR 36703.

Lutjanus quinquelineatus (Bloch, 1790) [Rokusenfuedai]
KPM-NR 16537, 30177, 31884.

Lutjanus sebae (Cuvier, 1816) [Sennendai]
KPM-NR 38329.

Macolor niger (Forsskål, 1775) [Madaratarumi]
KPM-NR 65861.



Fig. 10. *Lutjanus johnii*, KPM-NR 36702, Ie-jima Island, 0.6m depth, photo by H. Kodato.

- Paracaesio sordida* Abe et Shinohara, 1962 [Yogoreaodai]
KPM-NR 30181, 32500.
- Symphorus nematophorus* (Bleeker, 1860) [Itohikifuedai]
KPM-NR 36587, 64007.

Family Caesionidae

- Caesio caeruleaurea* Lacepède, 1801 [Sasamuro]
KPM-NR 32501, 36705, 36709-36710.
- Caesio cuning* (Bloch, 1791) [Yumeumeiro]
KPM-NR 38315.
- Caesio lunaris* Cuvier, 1830 [Hanatakasago]
KPM-NR 30182.
- Caesio teres* Seale, 1906 [Umeiromodoki]
KPM-NR 30183, 31889.
- Pterocaesio digramma* (Bleeker, 1864) [Takasago]
KPM-NR 36708.
- Pterocaesio marri* Schultz, 1953 [Nisetakasago]
KPM-NR 30185, 30718.
- Pterocaesio tile* (Cuvier, 1830) [Kumasasahanamuro]
KPM-NR 19460, 30186, 36706.
- Pterocaesio trilineata* Carpenter, 1987 [Issentakasago]
KPM-NR 30187, 36707.

Family Lobotidae

- Lobotes surinamensis* (Bloch, 1790) [Matsudai]
KPM-NI 8515; KPM-NR 54311, 88878.

Family Gerreidae

- Gerres acinaces* Bleeker, 1854 [Tsupparisaki]
KPM-NR 36711.
- Gerres oyena* (Forsskål, 1775) [Minamikurosagi]
KPM-NR 31890.

Family Haemulidae

- Diagramma pictum* (Thunberg, 1792) [Korodai]
KPM-NR 30188, 31893, 32508, 36712, 88869.
- Plectorhinchus chaetodonoides* Lacepède, 1801 [Chochokoshodai]
KPM-NI 4969; KPM-NR 31892, 32503-32504, 51571, 88868.
- Plectorhinchus lessonii* (Cuvier, 1830) [Hiregurokoshodai]
KPM-NR 32507.
- Plectorhinchus lineatus* (Linnaeus, 1758) [Ayakoshodai]
KPM-NI 8567; KPM-NR 32505-32506, 54356.
- Plectorhinchus orientalis* (Bloch, 1793) [Musujikoshodai]
KPM-NR 19437, 30189, 63955, 63975.
- Plectorhinchus picus* (Cuvier, 1830) [Ajjakoshodai]
KPM-NR 30190-30191, 31891, 36713, 61247, 63982.

Family Nemipteridae

- Pentapodus caninus* (Cuvier, 1830) [Kitsuneuo]
KPM-NI 4734, 4938, 5004; KPM-NR 30192, 30194-30195, 30720,
30782, 30786, 31897, 36714, 51543-51545, 64068, 65862, 66249.
- Pentapodus nagasakiensis* (Tanaka, 1915) [Itotamagashira]
KPM-NR 36718-36719, 65813.
- Pentapodus* sp. (Figs. 11, 12)
KPM-NR 30193, 31894, 32510, 36388.
- Remarks. This species is probably identified as *Pentapodus aureofasciatus* Russell, 2001. Some specimens from the Japanese waters are under study by the first author.

- Scolopsis affinis* Peters, 1877 [Himetamagashira]
KPM-NR 36716, 64125.
- Scolopsis bilineata* (Bloch, 1793) [Futasujitamagashira]
KPM-NR 30196-30197, 31895-31896, 66180.
- Scolopsis ciliata* (Lacepède, 1802) [Hakusentamagashira]
KPM-NR 36715, 64124.
- Scolopsis lineata* Quoy et Gaimard, 1824 [Yokoshimatamagashira]
KPM-NR 30198, 31898, 32509, 36717, 63991.
- Scolopsis monogramma* (Cuvier, 1830) [Hitosujitamagashira]
KPM-NR 30199, 30299, 36589.
- Scolopsis xenochrous* Günther, 1872 [Kamentamagashira]
KPM-NR 36590, 65811.

Family Lethrinidae

- Gnathodentex aureolineatus* (Lacepède, 1802) [Nokogiridai]
KPM-NR 30200, 31899, 31903-31904, 32511.
- Gymnocranius euanus* (Günther, 1879) [Shirodai]
KPM-NR 32514, 36591.
- Gymnocranius griseus* (Temminck et Schlegel, 1844) [Meichidai]
KPM-NR 36720.
- Lethrinus genivittatus* Valenciennes, 1830 [Itofuefuki]
KPM-NR 31902.
- Lethrinus nebulosus* (Forsskål, 1775) [Hamafuefuki]
KPM-NR 30734, 32515.
- Lethrinus obsoletus* (Forsskål, 1775) [Tateshimafuefuki]
KPM-NR 30184.
- Lethrinus semicinctus* Valenciennes, 1830 [Amifuefuki]
KPM-NR 36721.



Fig. 11. *Pentapodus* sp., juvenile, KPM-NR 32510, Ie-jima Island, 3m depth, photo by H. Kodato.



Fig. 12. *Pentapodus* sp., KPM-NR 36388, Ie-jima Island, 10m depth, photo by A. Mishiku.

Monotaxis grandoculis (Forsskål, 1775) [Yokoshimakurodai]
KPM-NR 30201, 31900-31901, 31905, 64097, 66239, 86292, 88669.

Family Mullidae

Mulloidichthys flavolineatus (Lacepède, 1801) [Montsukiakahimeji]
KPM-NR 30208-30209, 31906, 32517.

Mulloidichthys vanicolensis (Valenciennes, 1831) [Akahimeji]
KPM-NR 31908, 63937, 64113.

Parupeneus barberinoides (Bleeker, 1852) [Indohimeji]
KPM-NR 31910.

Parupeneus barberinus (Lacepède, 1801) [Osujihimeji]
KPM-NR 30207, 32516, 64082.

Parupeneus cyclostomus (Lacepède, 1801) [Marukuchihimeji]
KPM-NR 19485, 30205, 31909, 64115.

Parupeneus multifasciatus (Quoy et Gaimard, 1825) [Ojisan]
KPM-NI 8475; KPM-NR 30202-30204, 65822, 65828.

Parupeneus pleurostigma (Bennett, 1831) [Ryukyuhomeji]
KPM-NR 30206, 36722, 38322, 61248, 64022, 64105, 65842, 66194.

Upeneus tragula Richardson, 1846 [Yomehimeji]
KPM-NR 31907.

Family Pempheridae

Parapriacanthus ransonneti Steindachner, 1870 [Kimmemodoki]
KPM-NI 4068; KPM-NR 30210, 31911, 32519, 51630.

Pempheris schwenkii Bleeker, 1855 [Minamihatampo]
KPM-NR 30212, 66230.

Pempheris sp. of Hatooka, 2002 [Ryukyuhatampo]
KPM-NR 30211, 32520, 36724, 88835.

Family Chaetodontidae

Chaetodon adiergastos Seale, 1910 [Kurakakechochoou]
KPM-NR 38334.

Chaetodon argentatus Smith et Radcliffe, 1911 [Kagamichochoou]
KPM-NI 4029, 05028, 10811; KPM-NR 30225, 31936, 36731,
51655, 53584, 64044, 66218.

Chaetodon auriga Forsskål, 1775 [Togechochoou]
KPM-NR 32532, 65838, 66220.

Chaetodon auripes Jordan et Snyder, 1901 [Chochou]
KPM-NR 30230, 31917, 88904.

Chaetodon bennetti Cuvier, 1831 [Umizukichochoou]
KPM-NI 4018; KPM-NR 31924-31925, 53585, 61250.

Chaetodon citrinellus Cuvier, 1831 [Gomachochoou]
KPM-NR 31914, 31928, 63964.

Chaetodon ephippium Cuvier, 1831 [Segurochochoou]
KPM-NR 31918, 31931, 32530, 36730.

Chaetodon guentheri Ahl, 1923 [Kokutenkatagi]
KPM-NR 30232.

Chaetodon kleinii Bloch, 1790 [Mizorechochoou]
KPM-NR 19549, 30235, 31920-31921, 64132-64133.

Chaetodon lineolatus Cuvier, 1831 [Nisefuraichochoou]
KPM-NR 32531, 32533.

Chaetodon lunula (Lacepède, 1802) [Chohan]
KPM-NR 30222, 36729, 63965, 63988, 66214.

Chaetodon lunulatus Quoy et Gaimard, 1825 [Misujichochoou]
KPM-NI 4760, 8576; KPM-NR 30228, 31919, 51674, 54365,
63922, 65852.

Chaetodon melannotus Bloch et Schneider, 1801 [Akebonochochoou]
KPM-NI 8561; KPM-NR 19547, 26141, 30231, 31922, 31932,
54351, 61251, 88905.

Chaetodon meyeri Bloch et Schneider, 1801 [Ogichochoou]
KPM-NR 30229, 32528-32529.

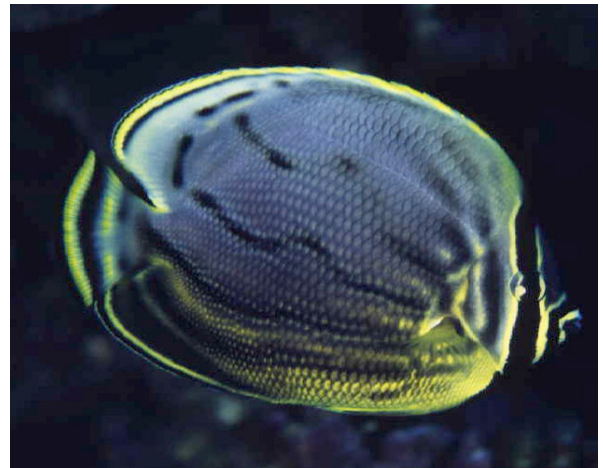


Fig. 13. A hybrid between *Chaetodon reticulatus* × *C. meyeri*, KPM-NR 10349, Ie-jima Island, 5m depth, photo by M. Kawada.

Chaetodon ornatissimus Cuvier, 1831 [Hanagurochochoou]
KPM-NR 31935, 86344.

Chaetodon plebeius Cuvier, 1831 [Sumitsukitonosamadai]
KPM-NR 19548, 30220, 31915, 63919, 64117, 66217, 86337.

Chaetodon punctatofasciatus Cuvier, 1831 [Shichisenchochoou]
KPM-NR 30223-30224, 31927.

Chaetodon rafflesii Anonymous [Bennett], 1830 [Amichochoou]
KPM-NR 30233, 63966.

Chaetodon reticulatus Cuvier, 1831 [Hakutenkatagi]
KPM-NR 31930, 38332.

Remarks. A hybrid between this species and *Chaetodon meyeri* was photographed at a depth of 5m by M. Kawada (KPM-NR 10349: Fig. 13).

Chaetodon selene Bleeker, 1853 [Tenguchochoou]
KPM-NR 36593.

Chaetodon semeion Bleeker, 1855 [Remonchochoou]
KPM-NR 38321.

Chaetodon speculum Cuvier, 1831 [Tonosamadai]
KPM-NR 19550, 26160, 30221, 31926, 86339.

Chaetodon trifascialis Quoy et Gaimard, 1825 [Yarikatagi]
KPM-NR 31916, 63974.

Chaetodon vagabundus Linnaeus, 1758 [Furaichochoou]
KPM-NR 19586, 30226-30227, 31929, 86343.

Chaetodon xanthurus Bleeker, 1857 [Amimechochoou]
KPM-NR 30234, 36391.

Remarks. Mishiku and Senou (1999) reported a hybrid between this species and *Chaetodon argentatus* based on an underwater photograph (KPM-NR 22015).

Coradion altivelis McCulloch, 1916 [Takigenrokudai]
KPM-NR 19344, 30218, 36390, 64013, 64094, 66227, 86335.

Forcipiger flavissimus Jordan et McGregor, 1898 [Fueyakkodai]
KPM-NR 26165, 30217, 31912, 32527, 36594, 61249, 64129,
86330, 88840, 88883.

Hemitaurichthys polylepis (Bleeker, 1857) [Kasumichochoou]
KPM-NR 19342, 26149, 30219, 31913, 31933, 66216, 86332.

Heniochus acuminatus (Linnaeus, 1758) [Hatatatedai]
KPM-NR 19354, 86316-86318.

Heniochus chrysostomus Cuvier, 1831 [Minamihatatedai]
KPM-NR 30216, 31923, 32525, 64151, 86314-86315.

Heniochus singularis Smith et Radcliffe, 1911 [Shimahatatedai]
KPM-NR 32526, 63952.

Heniochus varius (Cuvier, 1829) [Tsunohatatedai]
KPM-NR 19357, 31934, 65795, 66169, 86312.

Family Pomacanthidae

- Apolemichthys trimaculatus* (Cuvier, 1831) [Shitenyakko]
KPM-NR 19492, 30237, 31946, 66228, 86374-86377.
- Centropyge bicolor* (Bloch, 1787) [Somewakeyakko]
KPM-NR 19345, 19406, 19407, 30243, 31953, 86383.
- Centropyge bispinosa* (Günther, 1860) [Ruriyakko]
KPM-NR 38352.
- Centropyge ferrugata* Randall et Burgess, 1972 [Akaharanyakko]
KPM-NI 4851; KPM-NR 30241, 31944, 32537, 51716, 61252, 64108, 64150.
- Centropyge fisheri* (Snyder, 1904) [Chairoyakko]
KPM-NR 31952.
- Centropyge heraldi* Woods et Schultz, 1953 [Herarudokoganeyakko]
KPM-NI 4132, 4900; KPM-NR 30240, 32538, 51718, 66219.
- Centropyge tibicen* (Cuvier, 1831) [Aburayakko]
KPM-NR 30242, 31947, 66215.
- Centropyge vrolikii* (Bleeker, 1853) [Namerayakko]
KPM-NI 4864; KPM-NR 30244, 31938, 31945, 51719, 64149, 88846.
- Chaetodontoplus mesoleucus* (Bloch, 1787) [Chirimenyakko]
KPM-NR 31937.
- Genicanthus lamarck* (Lacepède, 1802) [Tatejimayakko]
KPM-NR 19349, 19355, 30247, 30248, 30729, 30748, 31940, 31951, 88657.
- Genicanthus melanospilos* (Bleeker, 1857) [Yaitoyakko]
KPM-NR 30245-30246, 36392, 66224.
- Genicanthus semifasciatus* (Kamohara, 1934) [Tosayakko]
KPM-NI 4935; KPM-NR 30251-30252, 30726, 51771, 63946, 63948.
- Genicanthus watanabei* (Yasuda et Tominaga, 1970) [Hirenayakko]
KPM-NI 5025; KPM-NR 19403, 19409, 26185, 30249-30250, 31948-31950, 36732-36734, 51772, 86387.
- Paracentropyge venusta* (Yasuda et Tominaga, 1969) [Sumireyakko]
KPM-NI 5003, 10832, 10856; KPM-NR 19399, 19408, 30239, 31942-31943, 51773, 65786, 86380-86381, 88838.
- Pomacanthus imperator* (Bloch, 1787) [Tatejimakinchakudai]
KPM-NR 19546, 30236, 31941, 63935, 64093, 86359.
- Pomacanthus semicirculatus* (Cuvier, 1831) [Sazanamiyakko]
KPM-NR 10292, 19346, 32534-32535.
- Pomacanthus sexstriatus* (Cuvier, 1831) [Rokusenyakko]
KPM-NR 32536, 63936.
- Pygoplites diacanthus* (Boddaert, 1772) [Nishikiyakko]
KPM-NR 19347, 19360, 30238, 31939, 86378-86379.

Family Pentacerotidae

- Evistias acutirostris* (Temminck et Schlegel, 1844) [Tengudai] (Fig. 14)
KPM-NR 38328.

Family Cirrhitidae

- Amblycirrhitus bimacula* (Jenkins, 1903) [Futahoshigombe]
KPM-NI 4924; KPM-NR 30327, 36600.
- Cirrhitichthys aprinus* (Cuvier, 1829) [Minamigombe]
KPM-NI 5053; KPM-NR 30315, 32022, 51944, 88656.
- Cirrhitichthys falco* Randall, 1963 [Sarasagombe]
KPM-NI 5007; KPM-NR 19351, 19488, 30316, 32021, 32023, 51947, 63945, 86399.
- Cirrhitichthys oxycephalus* (Bleeker, 1855) [Himegombe]
KPM-NI 4768, 5052; KPM-NR 30326, 32019-32020, 51948, 51950.
- Cirrhitops hubbardi* (Schultz, 1943) [Sumitsukigombe]
KPM-NR 38326.
- Cirrhitus pinnulatus* (Forster, 1801) [Isogombe]
KPM-NI 4962; KPM-NR 30317, 32025, 51951.



Fig. 14. *Evistias acutirostris*, KPM-NR 38328, Ie-jima Island, 47m depth, photo by K. Yunokawa.

- Cyprinocirrhites polyactis* (Bleeker, 1874) [Uigombe]
KPM-NR 30325, 32024.
- Neocirrhites armatus* Castelnau, 1873 [Benigombe]
KPM-NR 30324, 32026-32027.
- Oxycirrhites typus* Bleeker, 1857 [Kudagombe]
KPM-NR 38331.
- Paracirrhites arcatus* (Cuvier, 1829) [Meganegombe]
KPM-NI 5002; KPM-NR 19352, 30318-30319, 32017-32018, 32592, 51954, 86400.
- Paracirrhites forsteri* (Schneider, 1801) [Hoshigombe]
KPM-NR 30320-30322, 32014-32016, 32591, 65779, 88908.
- Paracirrhites hemistictus* (Günther, 1874) [Irezumigombe]
KPM-NR 21793, 30323.

Family Pomacentridae

- Abudefduf notatus* (Day, 1870) [Isosuzumedai]
KPM-NI 8462, 8552; KPM-NR 30310, 36746-36747, 54286.
- Abudefduf septemfasciatus* (Cuvier, 1830) [Shichisensuzumedai]
KPM-NR 88876.
- Abudefduf sexfasciatus* (Lacepède, 1801) [Rokusensuzumedai]
KPM-NI 10874-10875; KPM-NR 32554, 36748, 88870.
- Abudefduf sordidus* (Forsskål, 1775) [Shimasuzumedai]
KPM-NI 8463, 8549, 10687; KPM-NR 30306, 32553, 36745, 54287.
- Abudefduf vaigiensis* (Quoy et Gaimard, 1825) [Oyabiccha]
KPM-NI 8514, 10704-10705; KPM-NR 31987-31988, 64041.
- Amblyglyphidodon aureus* (Cuvier, 1830) [Yamabukisuzumedai]
KPM-NR 26215, 30266, 30721, 31964, 86457-86458.
- Amblyglyphidodon curacao* (Bloch, 1787) [Kurakaosuzumedai]
KPM-NR 30267, 30775, 31969-31970, 31990-31991, 36753.
- Amblyglyphidodon leucogaster* (Bleeker, 1847) [Namisuzumedai]
KPM-NR 30268-30269, 31971, 31992, 63926, 66209.
- Amphiprion clarkii* (Bennett, 1830) [Kumanomi]
KPM-NI 4827-4828, 8445; KPM-NR 19325-19326, 19335, 28533, 30256, 31954, 51806-51807, 54269, 61253, 65866.
- Amphiprion frenatus* Brevoort, 1856 [Hamakumanomi]
KPM-NI 4761; KPM-NR 28521, 28532, 30254, 32539, 51808, 65803.
- Amphiprion ocellaris* Cuvier, 1830 [Kakurekumanomi]
KPM-NR 19307, 28534, 28544-28545, 30255, 36735-36736, 64152, 64164-64166, 86248-86249.
- Amphiprion perideraion* Bleeker, 1855 [Hanabirakumanomi]
KPM-NI 4762, 8446, 8451; KPM-NR 19321, 28531, 28535, 30253, 31957, 51809, 54270, 54275.

- Amphiprion polymnus* (Linnaeus, 1758) [Toakakumanomi]
KPM-NR 10317-10318, 30257-30258, 31955-31956.
- Amphiprion sandaracinos* Allen, 1972 [Sejirokumanomi]
KPM-NR 28522, 36737.
- Cheiloprion labiatus* (Day, 1877) [Atsukuchisuzumedei]
KPM-NR 31996-31998.
- Chromis albomaculata* Kamohara, 1960 [Shiroboshisuzumedei]
KPM-NR 32549, 36739, 61256.
- Chromis alleni* Randall, Ida et Moyer, 1981 [Onagasuzumedei]
Chromis alleni: Senou *et al.*, 1999: 7.
KPM-NI 4892; KPM-NR 32542, 88843.
- Chromis alpha* Randall, 1988 [Aruafuasuzumedei]
Chromis alpha: Senou *et al.*, 1999: 2, figs. 1, 3.
KPM-NI 5367; KPM-NR 29600, 32545-32547.
- Chromis atripectoralis* Welander et Schultz, 1951 [Aobasuzumedei]
KPM-NR 30777, 38569.
- Chromis atripes* Fowler et Bean, 1928 [Hiregurosuzumedei]
KPM-NI 4114, 4767, 4861-4862, 4877, 4933; KPM-NR 30277, 31978, 51820-51823, 64011, 80961, 88842.
- Chromis chrysur*a (Bliss, 1883) [Amamisuzumedei]
KPM-NI 4066; KPM-NR 30281, 31965, 51824, 61255, 63928, 64154, 86446.
- Chromis delta* Randall, 1988 [Derutasuzumedei]
Chromis delta: Senou *et al.*, 1999: 4, figs. 7, 8.
KPM-NI 5402; KPM-NR 29601, 32590, 36740, 64131, 66206.
- Chromis elerae* Fowler et Bean, 1928 [Taiwansuzumedei]
KPM-NR 32540-32541.
- Chromis flavomaculata* Kamohara, 1960 [Kihoshisuzumedei]
KPM-NI 5065; KPM-NR 30276, 31963, 31977, 66187, 66191.
- Chromis fumea* (Tanaka, 1917) [Matsubasuzumedei]
KPM-NR 36597, 65810.
- Chromis lepidolepis* Bleeker, 1877 [Sasasuzumedei]
KPM-NR 30285, 31979, 80937.
- Chromis leucura* Gilbert, 1905 [Fukamisuzumedei]
Chromis leucura: Senou *et al.*, 1999: 7.
KPM-NI 4134; KPM-NR 32548, 51841, 80934, 80941, 88671.
- Chromis margaritifera* Fowler, 1946 [Shikokusuzumedei]
Chromis margaritifera: Senou *et al.*, 1999: 7.
KPM-NI 4120, 4123, 4800-4801, 4839, 4878, 8406; KPM-NR 19457, 30282, 32543, 32544, 51842-51845, 54232, 61254.
- Chromis notata notata* (Temminck et Schlegel, 1844) [Suzumedei]
KPM-NI 4072; KPM-NR 51851.
- Chromis ovatiformis* Fowler, 1946 [Marusuzumedei]
KPM-NI 4766; KPM-NR 30289-30290, 30724, 31980-31981, 51852, 65783, 88845.
- Chromis retrofasciata* Weber, 1913 [Kuroobisuzumedei]
KPM-NR 36596, 36738.
- Chromis vanderbilti* (Fowler, 1941) [Himesuzumedei]
KPM-NI 4774, 4780, 5062; KPM-NR 30307, 31958, 51853, 51855, 63984.
- Chromis viridis* (Cuvier, 1830) [Debasuzumedei]
KPM-NR 30261, 31959-31960, 31962, 31982-31983, 63930.
- Chromis weberi* Fowler et Bean, 1928 [Takasagosuzumedei]
KPM-NR 64099.
- Chromis xanthura* (Bleeker, 1854) [Monsuzumedei]
KPM-NR 30273, 36393, 36741, 63951, 64049.
- Chrysiptera biocellata* (Quoy et Gaimard, 1825) [Sujibuchisuzumedei]
KPM-NI 10814-10815; KPM-NR 29596, 30292, 32560-32561, 36750.
- Chrysiptera brownriggii* (Bennett, 1828) [Miyakokisensuzumedei]
KPM-NI 8548; KPM-NR 29585, 30259.
Remarks. We followed Allen and Bailey (2002) on the taxonomic status of this species.
- Chrysiptera caeruleolineata* (Allen, 1973) [Aosujisuzumedei]
KPM-NI 4820, 8428, 10655-10656; KPM-NR 21795, 30286-30287, 51943, 54252, 66221.
- Chrysiptera cyanea* (Quoy et Gaimard, 1825) [Rurisuzumedei]
KPM-NI 4740, 8465, 8550; KPM-NR 30272, 32558-32559, 51861, 54289, 61262.
- Chrysiptera glauca* (Cuvier, 1830) [Nezusuzumedei]
KPM-NI 8464, 8551, 106831, 10800-10808; KPM-NR 30288, 36751-36752, 54288.
- Chrysiptera rex* (Snyder, 1909) [Remonsuzumedei]
KPM-NI 2538, 4920-4921, 5063, 8405, 10828; KPM-NR 19388, 19464, 30309, 32013, 32556, 36749, 51867, 54231, 88850.
- Chrysiptera starcki* (Allen, 1973) [Senakirurisuzumedei]
KPM-NI 2529-2530, 4847-4848; KPM-NR 31989, 51870-51873, 80962.
- Chrysiptera tricincta* (Allen et Randall, 1974) [Misujisuzumedei]
KPM-NI 4023, 4038, 4903; KPM-NR 30262-30263, 32555, 51924-51925.
- Chrysiptera unimaculata* (Cuvier, 1830) [Ichimonsuzumedei]
KPM-NR 30260, 32557, 32562, 88875.
- Dascyllus aruanus* (Linnaeus, 1758) [Misujiryukyusuzumedei]
KPM-NI 4702, 4758, 8582, 10786, 10877-10878; KPM-NR 30264, 31985, 32550, 36742, 51927-51928, 54371.
- Dascyllus reticulatus* (Richardson, 1846) [Futasujiryukyusuzumedei]
KPM-NI 4054; KPM-NR 30265, 31984, 51878, 63931, 66190.
- Dascyllus trimaculatus* (Rüppell, 1829) [Mitsuboshikurosuzumedei]
KPM-NR 30311, 31966, 61257-61258, 66192, 66210, 88847-88848.
- Dischistodus prosopotaenia* (Bleeker, 1852) [Dandarasuzumedei]
KPM-NR 30275, 32564.
- Neoglyphidodon melas* (Cuvier, 1830) [Kurosuzumedei]
KPM-NR 30284, 31972, 31993.
- Neoglyphidodon nigroris* (Cuvier, 1830) [Hirenasuzumedei]
KPM-NI 10707; KPM-NR 30270-30271, 30784, 31967, 31974, 31994-31995, 32563, 64119, 66208.
- Neopomacentrus cyanomos* (Bleeker, 1856) [Kuroribonsuzumedei]
KPM-NR 36598, 61263.
- Plectroglyphidodon dickii* (Liénard, 1839) [Ishigakisuzumedei]
KPM-NI 4840, 5026; KPM-NR 19378, 19393, 30298, 31968, 51888-51889, 86450-86451.
- Plectroglyphidodon imparipennis* (Vaillant et Sauvage, 1875) [Iwasakisuzumedei]
KPM-NI 4117, 4124, 4860, 5059, 5066; KPM-NR 32576, 51890-51892.
- Plectroglyphidodon johnstonianus* Fowler et Ball, 1924 [Rurimeishigakisuzumedei]
KPM-NI 4808; KPM-NR 19373, 19389, 30300, 30314, 31986, 51893, 61261.
- Plectroglyphidodon lacrymatus* (Quoy et Gaimard, 1825) [Rurihoshisuzumedei]
KPM-NI 10710; KPM-NR 30301, 32551-32552, 36744, 61259, 63938, 64155.
- Plectroglyphidodon leucozonus* (Bleeker, 1859) [Hakusensuzumedei]
KPM-NI 5064, 5067, 10791; KPM-NR 16541, 30283, 61260.
- Plectroglyphidodon phoenixensis* (Schultz, 1943) [Fuenikkusuzumedei]
KPM-NR 32588, 36599.
- Pomacentrus alexanderae* Evermann et Seale, 1907 [Montsukisuzumedei]
KPM-NI 8563; KPM-NR 30274, 31961, 32000, 54352, 64120, 64153, 65865.
- Pomacentrus amboinensis* Bleeker, 1868 [Nisenettaisuzumedei]
KPM-NI 4017, 8442, 10700; KPM-NR 30303, 30749, 31973, 32575, 51896, 54266.

- Pomacentrus bankanensis* Bleeker, 1853 [Meganesuzumedai]
KPM-NR 30305, 30312, 63980.
- Pomacentrus chrysurus* Cuvier, 1830 [Ojirosuzumedai]
KPM-NR 32566-32567.
- Pomacentrus coelestis* Jordan et Starks, 1901 [Sorasuzumedai]
KPM-NR 30279-30280, 32568.
- Pomacentrus lepidogenys* Fowler et Bean, 1928 [Asadosuzumedai]
KPM-NR 30308, 31999.
- Pomacentrus moluccensis* Bleeker, 1853 [Nettaisuzumedai]
KPM-NI 4061; KPM-NR 30304, 32001-32002, 51908, 63925.
- Pomacentrus nagasakiensis* Tanaka, 1917 [Nagasaki-suzumedai]
KPM-NI 4028, 4065, 4741, 4904-4905, 4943, 4945, 8443, 10702;
KPM-NR 30297, 30745, 32571-32572, 51910-51914, 54267, 64156,
65846, 66186, 66189, 66207.
- Pomacentrus nigromarginatus* Allen, 1973 [Nisemontsukisuzumedai]
KPM-NR 17026, 32569-32570, 65782.
- Pomacentrus pavo* (Bloch, 1787) [Kujakusuzumedai]
KPM-NR 30781, 36754.
- Pomacentrus philippinus* Evermann et Seale, 1907 [Fuiripinsuzumedai]
KPM-NI 5021, 5069; KPM-NR 32589, 51915, 66188, 88844.
- Pomacentrus* sp. of Aonuma and Yoshino, 2002 [Minamiisozumedai]
KPM-NI 10708; KPM-NR 32009, 32565, 32573-32574, 36755,
61264, 88862.
- Pomacentrus vaiuli* Jordan et Seale, 1906 [Kuromeganesuzumedai]
KPM-NI 4731, 8404; KPM-NR 19372, 19391, 21794, 28555,
30302, 30313, 31976, 51923, 54230, 65849, 88655, 88833.
- Pomachromis richardsoni* (Snyder, 1909) [Okinawasuzumedai]
KPM-NI 4067, 4781, 5058; KPM-NR 30278, 32012, 36743,
51929-51930.
- Stegastes altus* (Okada et Ikeda, 1937) [Sedakasuzumedai]
KPM-NR 17021, 30291.
- Stegastes albifasciatus* (Schlegel et Müller, 1839) [Kiobisuzumedai]
KPM-NI 8466, 8474; KPM-NR 32584-32587, 36756-36757, 54290.
- Stegastes fasciolatus* (Ogilby, 1889) [Fuchidorisuzumedai]
KPM-NI 4779, 5042, 10708; KPM-NR 16545, 19486,
30293-30295, 32007, 51937-51938, 63973, 66254.
- Stegastes insularis* Allen et Emery, 1985 (Figs. 15, 16)
KPM-NI 2523, 4807, 4863, 5039; KPM-NR 16543, 28899,
32008, 32011, 32581-32582, 51939-51942, 66174.
- Remarks. According to Allen and Emery (1985), the above specimens and photographs were identified as *Stegastes insularis*.
- Stegastes punctatus* (Quoy et Gaimard, 1825) [Hananagasuzumedai]
KPM-NR 32003-32006, 61265.
- Remarks. We followed Randall (2004) on the taxonomic status of this species.
- Stegastes nigricans* (Lacepède, 1802) [Kurosorasuzumedai]
KPM-NR 8326, 32579-32580, 32583, 61266.
- Stegastes obreptus* (Whitley, 1948) [Aisuzumedai]
KPM-NR 32577-32578.

Family Kuhliidae

- Kuhlia mugil* (Forster, 1801) [Ginyugoi]
KPM-NI 4723-4724, 8461, 8507, 10668; KPM-NR 30112,
36578, 36689, 51148-51149, 54285.

Family Oplegnathidae

- Oplegnathus punctatus* (Temminck et Schlegel, 1844) [Ishigakidai]
KPM-NR 36595.



Fig. 15. *Stegastes insularis*, juvenile, KPM-NR 28899, Ie-jima-Island, 5m depth, photo by A. Mishiku.



Fig. 16. *Stegastes insularis*, KPM-NR 32582, Ie-jima Island, 8m depth, photo by H. Kodato.

Family Kyphosidae

- Kyphosus cinerascens* (Forsskål, 1775) [Tenjikuisaki]
KPM-NR 30214, 32522-32523, 36725, 63961, 66170, 66245.
- Kyphosus vaigiensis* (Quoy et Gaimard, 1825) [Isuzumi]
KPM-NR 30215.

Family Microcanthidae

- Microcanthus strigatus* (Cuvier, 1831) [Kagokakidai]
KPM-NR 30621, 32524, 36726.

Family Girellidae

- Girella mekina* Jordan et Starks, 1907 [Okinamejina]
KPM-NR 30213, 32521, 88697, 88874.

Family Labridae

- Anampses caeruleopunctatus* Rüppell, 1829 [Buchisusukibera]
KPM-NI 5033-5035; KPM-NR 30399-30400, 30402, 32113,
36763, 52009-52011, 61267.
- Anampses geographicus* Valenciennes, 1840 [Mushibera]
KPM-NR 30401.

Anampses melanurus Bleeker, 1857 [Kurofuchisusukibera]
KPM-NR 30404, 36762, 65871.

Anampses meleagrides Valenciennes, 1840 [Hokutobera]
KPM-NR 30403, 36397, 65857.

Anampses neoguinaicus Bleeker, 1878 [Nyuginiibera]
Anampses neoguinaicus: Yunokawa, 1992: 6, fig. 2.
KPM-NR 30406-30407, 32109, 32599, 63943.

Anampses twistii Bleeker, 1856 [Hoshisusukibera]
KPM-NR 32112, 65856.

Bodianus anthioides (Bennett, 1832) [Hiodoshiibera]
KPM-NR 10324, 30408, 32030, 32078, 32597, 66250.

Bodianus axillaris (Bennett, 1832) [Sumitsukibera]
KPM-NI 5017, 5068; KPM-NR 19504, 30424, 32079, 52012, 63976.

Bodianus bilunulatus (Lacepède, 1801) [Kitsunebera]
KPM-NR 30409-30411, 32598, 64110, 65817.

Bodianus bimaculatus Allen, 1973 [Futahoshikitsunebera]
KPM-NR 32594, 80951.

Bodianus loxozonus (Snyder, 1908) [Hiregurobera]
KPM-NR 29587, 30412, 30730, 32032, 32077, 36760, 88658.

Bodianus perditio (Quoy et Gaimard, 1834) [Takibera]
KPM-NR 32031, 36761, 65799.

Bodianus sp. of Shimada, 2002 [Sujikitsunebera]
Bodianus sp.: Senou and Yunokawa, 1996: 1.
KPM-NR 9790, 9804, 32076.

Cheilinus chlorourus (Bloch, 1791) [Akatemmochinouo]
KPM-NR 30447, 36399, 36777, 65834, 65847.

Cheilinus fasciatus (Bloch, 1791) [Yashabera]
KPM-NR 30451, 32608.

Cheilinus oxycephalus Bleeker, 1853 [Mitsuboshimochinouo]
KPM-NI 4060, 4062; KPM-NR 30444, 38349, 52016-52017.

Cheilinus trilobatus Lacepède, 1801 [Mitsubamochinouo]
KPM-NR 19493, 30456, 32615-32616.

Cheilinus undulatus Rüppell, 1835 [Meganemochinouo]
KPM-NR 30440, 32105, 32617.

Cheilio inermis (Forsskål, 1775) [Kamasubera]
KPM-NR 29588, 30396, 32600, 36764, 63986.

Choerodon fasciatus (Günther, 1867) [Shichisembera]
KPM-NR 30413-30414, 32029, 32075, 32593, 36759.

Choerodon jordani (Snyder, 1908) [Kurakakebera]
KPM-NR 30421-30422, 32108, 64139.

Choerodon schoenleinii (Valenciennes, 1839) [Shirokurabera]
KPM-NR 36602, 64030.

Cirrhilabrus cyanopleura (Bleeker, 1851) [Kuroheriitohikibera]
KPM-NI 8433, 8448, 8452, 8542, 10696; KPM-NR 30331-30332,
32054, 32098-32100, 54257, 54272, 54276, 54338, 64116,
64136-64137, 64167, 65832.

Cirrhilabrus exquisitus Smith, 1957 [Nishikiitohikibera]
KPM-NI 2521, 4785, 4913, 4937; KPM-NR 30338-30339, 30756,
32050, 52030, 52032-52033, 61271-61275, 64059, 64083, 64089, 64095.

Cirrhilabrus katherinae Randall, 1992 [Goshikiitohikibera]
KPM-NR 30341.

Cirrhilabrus katoi Senou et Hirata, 2000 [Kurenaiitohikibera]
KPM-NR 88255.

Cirrhilabrus lanceolatus Randall et Masuda, 1991 [Yariitohikibera]
KPM-NR 30330, 32056, 36775, 80945.

Cirrhilabrus lunatus Randall et Masuda, 1991
[Tsukinowaitohikibera]
KPM-NI 4831, 4898; KPM-NR 30333-30336, 32052-32053,
32101, 32612, 36776, 52034, 64057, 64061.

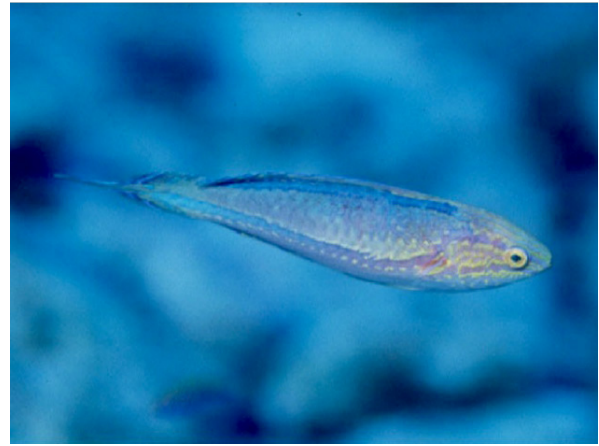


Fig. 17. *Cirrhilabrus* sp., KPM-NR 36609, Ie-jima Island, 15m depth, photo by K. Yunokawa.

Cirrhilabrus melanomarginatus Randall et Shen, 1978
[Tomoshiitohikibera]
KPM-NR 28444, 30337, 30754, 32051, 32613, 61277, 64050,
64092, 65815.

Cirrhilabrus rubrimarginatus Randall, 1992 [Benihireitohikibera]
KPM-NI 4822, 4867; KPM-NR 30340, 32055, 32096-32097,
52037-52038, 61276, 80963.

Cirrhilabrus sp. (Fig. 17)
KPM-NR 36609.
Remarks. This species will be described by B. D. Greene and
others as new.

Coris aygula Lacepède, 1801 [Kammuribera]
KPM-NR 19501, 30387-30388, 32048, 32091, 63941, 65820, 88880.

Coris batuensis (Bleeker, 1856-1857) [Shichisemmusumebera]
KPM-NR 30391, 32116.

Coris dorsomacula Fowler, 1908 [Sujibera]
KPM-NI 10697-10698; KPM-NR 30382-30383, 32049, 65821.

Coris gaimard (Quoy et Gaimard, 1824) [Tsyubera]
KPM-NR 32090, 64048, 65825.

Cymolutes torquatus (Valenciennes, 1840) [Tateyamabera]
KPM-NR 17023, 22019, 30425, 30426, 32060, 32611, 64017.

Epibulus insidiator (Pallas, 1770) [Gichibera]
KPM-NI 10703, 10851; KPM-NR 19494, 30449-30450, 36396,
65788, 65805, 65854, 88899.

Gomphosus varius Lacepède, 1801 [Kugibera]
KPM-NR 30397-30398, 32111.

Halichoeres biocellatus Schultz, 1960 [Nishikiyusen]
KPM-NR 30369-30371, 30728, 30732, 32087, 63947, 64138,
64168, 88882.

Halichoeres chrysus Randall, 1981 [Koganekyusen]
KPM-NR 32043-32044.

Halichoeres hartzfeldii (Bleeker, 1852) [Kisujikyusen]
KPM-NR 30377-30378, 36398, 36769-36770, 64027, 64029.

Halichoeres hortulanus (Lacepède, 1801) [Tokarabera]
KPM-NR 30417-30419, 32092, 88881.

Halichoeres margaritaceus (Valenciennes, 1839) [Akanijibera]
KPM-NR 22016.

Halichoeres marginatus Rüppell, 1835 [Kanokobera]
KPM-NI 8469, 10674; KPM-NR 30381, 30384, 30423, 36400,
36772, 66253.

Halichoeres melanochir Fowler et Bean, 1928 [Munatembera]
KPM-NI 8432; KPM-NR 30392, 30780, 36771, 54256, 64046, 65785.

- Halichoeres melanurus* (Bleeker, 1851) [Kazarikyusen]
KPM-NI 8580; KPM-NR 30373-30374, 32045, 32604, 36773, 54369.
- Halichoeres melasmapomus* Randall, 1981 [Hokurokyusen]
KPM-NR 32088, 65798, 88676.
- Halichoeres miniatus* (Valenciennes, 1839) [Hohowakyusen]
KPM-NR 61269.
- Halichoeres nebulosus* (Valenciennes, 1839) [Inazumabera]
KPM-NI 8467; KPM-NR 30379.
- Halichoeres orientalis* Randall, 1999 [Japanese naem: Tsukibera]
KPM-NR 18769, 30372, 30380, 30731, 32047, 32093, 65870.
- Halichoeres prosopion* (Bleeker, 1853) [Munatemberadamashi]
KPM-NR 30723, 32042, 32089.
- Halichoeres trimaculatus* (Quoy et Gaimard, 1834) [Mitsuboshikyusen]
KPM-NI 8581, 10666, 10876; KPM-NR 30375-30376, 32046, 54370.
- Hemigymnus fasciatus* (Bloch, 1792) [Shimaterekuchibera]
KPM-NI 8444, 10724; KPM-NR 30342-30343, 32033, 32080, 54268, 64135.
- Hemigymnus melapterus* (Bloch, 1791) [Tarekuchibera]
KPM-NR 19502, 30344-30345, 32114.
- Hologymnosus annulatus* (Lacepède, 1801) [Namerabera]
KPM-NR 30428-30430, 32607.
- Hologymnosus doliatus* (Lacepède, 1801) [Shirotasukibera]
KPM-NR 32094, 64086, 65819, 66193.
- Hologymnosus rhodonotus* Randall et Yamakawa, 1988 [Ayatasukibera]
KPM-NR 22599, 32595-32596.
- Iniistius aneitensis* (Günther, 1862) [Hagehirabera]
KPM-NR 30774, 32074, 36778, 64026, 65841.
Remarks. We followed Randall and Earle (2002) on taxonomic status of the genus.
- Iniistius pavo* (Valenciennes, 1840) [Hoshitensu]
KPM-NI 4074; KPM-NR 28523, 30432, 30434, 32071-32072, 52095, 64021.
- Iniistius twistii* (Bleeker, 1856) [Hinomarutensu]
KPM-NR 36610.
- Labrichthys unilineatus* (Guichenot, 1847) [Kurobera]
KPM-NR 30713, 32106-32107.
- Labroides bicolor* Fowler et Bean, 1928 [Somewakebera]
KPM-NR 30363, 30712, 36865.
- Labroides dimidiatus* (Valenciennes, 1839) [Honsomewakebera]
KPM-NI 4889; KPM-NR 19328, 36862-36864, 88677.
- Labropsis manabei* Schmidt, 1931 [Manabebera]
KPM-NR 30364, 36394, 36765.
- Labropsis xanthonota* Randall, 1981 [Miyakebera]
KPM-NR 32606, 80953.
- Macropharyngodon meleagris* (Valenciennes, 1839) [Nodogurobera]
KPM-NR 30394-30395, 32038, 65863, 88886.
- Macropharyngodon negrosensis* Herre, 1932 [Sejironodogurobera]
KPM-NR 65812.
- Macropharyngodon moyeri* Shepard et Meyer, 1978 [Usubanodogurobera]
KPM-NR 36603.
- Novaculichthys taeniourus* (Lacepède, 1801) [Obitensumodoki]
KPM-NR 30445-30446, 30738, 36395, 36780.
- Oxycheilinus bimaculatus* (Valenciennes, 1840) [Takobera]
KPM-NI 8538-8541, 10699; KPM-NR 32610, 54334-54337, 64058.
- Oxycheilinus unifasciatus* (Streets, 1877) [Hitosujimochinouo]
KPM-NR 30455, 32065-32066, 32104, 65800, 65855.
- Paracheilinus carpenteri* Randall et Lubbock, 1981 [Kujakubera]
KPM-NI 2542; KPM-NR 30329, 32057-32059, 32614, 52002.
- Pseudocheilinus evanidus* Jordan et Evermann, 1903
[Himenisemochinouo]
KPM-NI 8435; KPM-NR 30454, 32061, 54259, 64055, 64107, 88901.
- Pseudocheilinus hexataenia* (Bleeker, 1857) [Nisemochinouo]
KPM-NI 4125, 4870, 4873, 8558; KPM-NR 30453, 32062-32063, 52063-52065, 54348, 64106.
- Pseudocheilinus ocellatus* Randall, 1999 [Yokoshimanisemochinouo]
Pseudocheilinus ocellatus: Senou *et al.*, 2000: 1.
KPM-NI 5083; KPM-NR 30441-30443, 32064, 32103, 32619.
- Pseudocheilinus octotaenia* Jenkins, 1901 [Yasujinisemochinouo]
KPM-NR 30452, 32102, 65872, 88890.
- Pseudocoris aurantiofasciata* Fourmanoir, 1971 [Shiratakiberadamashi]
KPM-NR 30415-30416, 32115, 80936, 80952.
- Pseudocoris philippina* (Fowler et Bean, 1928) [Shiratakibera]
KPM-NR 36605, 36774, 61270.
- Pseudocoris yamashiroi* (Schmidt, 1931) [Yamashirobera]
KPM-NR 30389-30390, 32095, 32605, 63944, 63949.
- Pseudodax moluccanus* (Valenciennes, 1840) [Budaibera]
KPM-NR 30404, 32609, 36758.
- Pseudojuloides cerasinus* (Snyder, 1904) [Ogurobera]
KPM-NR 21796, 30365-30368, 32039, 32081.
- Pseudojuloides mesostigma* Randall et Randall, 1981 [Sumitsukiogurobera]
KPM-NR 22308, 32040, 32082, 36606.
- Pseudojuloides severnsi* Bellwood et Randall, 2000 [Aosujioogurobera]
KPM-NR 36607.
- Stethojulis bandanensis* (Bleeker, 1851) [Akaobibera]
KPM-NR 22017, 30361-30362, 36604, 36766, 66168, 66182.
- Stethojulis strigiventer* (Bennett, 1832) [Harasujibera]
KPM-NI 4706; KPM-NR 30358-30360, 36767, 64051.
- Stethojulis trilineata* (Bloch et Schneider, 1801) [Onibera]
KPM-NR 30790.
- Suezichthys gracilis* (Steindachner et Döderlein, 1887) [Itobera]
KPM-NR 32603.
- Thalassoma amblycephalum* (Bleeker, 1856) [Kogashirabera]
KPM-NI 4783; KPM-NR 30346, 36768, 52075.
- Thalassoma hardwicke* (Bennett, 1830) [Senasujibera]
KPM-NR 30357, 32083, 66252.
- Thalassoma jansenii* (Bleeker, 1856) [Yansennishikibera]
KPM-NR 19356, 19359, 30347, 32110.
- Thalassoma lunare* (Linnaeus, 1758) [Otobera]
KPM-NR 65827.
- Thalassoma lutescens* (Lay et Bennett, 1839) [Yamabukibera]
KPM-NI 4790, 5001; KPM-NR 19495, 22018, 30348-30351, 32041, 52089-52090, 64130, 65823.
- Thalassoma quinquevittatum* (Lay et Bennett, 1839) [Hakobera]
KPM-NR 19503, 30352-30353, 32084, 64043.



Fig. 18. *Xyrichtys halsteadii*, KPM-NR 22024, Ie-jima Island, 50m depth, photo by H. Kodato.

- Thalassoma trilobatum* (Lacepède, 1801) [Ryugubera]
KPM-NR 30354-30356, 32085-32086, 36601, 61268.
- Wetmorella nigropinnata* (Seale, 1901) [Hashinagabera]
KPM-NI 4103; KPM-NR 30385-30386, 36608, 52091.
- Xyrichtys halsteadii* Randall & Lobel, 2003 (Fig. 18)
KPM-NR 21797, 22024.

Remarks. The photographs agree well with the figures of the original description given by Randall and Lobel (2003), but specimens have not been obtained yet from Japan. We followed them on taxonomic status of the genus.

- Xyrichtys woodi* (Jenkins, 1901) [Tensumodoki]
KPM-NR 30431.

Family Scaridae

- Calotomus carolinus* (Valenciennes, 1840) [Taiwambudai]
KPM-NR 30467, 32620-32621.
- Cetoscarus bicolor* (Rüppell, 1829) [Irobudai]
KPM-NR 19339, 19341, 30461, 32119, 32624.
- Chlorurus bowersi* (Snyder, 1909) [Omonhagebudai]
KPM-NR 30457, 30735, 36782, 61278, 65769.
- Chlorurus frontalis* (Valenciennes, 1840) [Onihagebudai]
KPM-NR 32622.
- Chlorurus microrhinos* (Bleeker, 1854) [Nanyobudai]
KPM-NR 30778, 63933, 64070, 88877.
- Chlorurus sordidus* (Forsskål, 1775) [Hagebudai]
KPM-NR 30463, 30471, 30474-30476, 32121, 32623, 61279, 63940, 63942, 63954, 64112, 64134, 64146-64147, 65759-65760, 65763, 65776.
- Hipposcarus longiceps* (Valenciennes, 1840) [Kitsunebudai]
KPM-NR 36781.
- Scarus chameleon* Choat et Randall, 1986 [Kamereombudai]
KPM-NR 36790, 61280, 65774.
- Scarus dimidiatus* Bleeker, 1859 [Kawaribudai]
KPM-NR 36783-36784.
- Scarus festivus* Valenciennes, 1840 [Tsukinowabudai]
KPM-NR 30459, 65767.
- Scarus forsteni* (Bleeker, 1861) [Ichimonjibudai]
KPM-NR 30466, 30468, 30473, 30736, 36861, 63932, 63962, 64101, 64145, 65768, 65772.
- Scarus frenatus* Lacepède, 1802 [Amimebudai]
KPM-NR 63958, 65765.
- Scarus fuscocaudalis* Randall et Myers, 2000 [Ogurobudai]
Scarus fuscocaudalis: Kishimoto *et al.*, 2002: 2.
KPM-NR 36791, 61283-61284, 64102, 65773, 65777.
- Scarus ghobban* Forsskål, 1775 [Hibudai]
KPM-NR 30460, 36785, 63956, 65762.
- Scarus globiceps* Valenciennes, 1840 [Daidaibudai]
KPM-NR 36789, 61281, 63960, 63971, 65764.
- Scarus hypselopterus* Bleeker 1853 [Kibirebudai]
KPM-NR 30462, 30472, 32625, 61282, 65754.
- Scarus niger* Forsskål, 1775 [Buchibudai]
KPM-NR 30464, 32628, 36787, 64065, 64074, 65770.
- Scarus oviceps* Valenciennes, 1840 [Himebudai]
KPM-NR 28901, 30469, 32123, 32629-32630, 36786, 65755, 65766.
- Scarus ovifrons* Temminck et Schlegel, 1846 [Aobudai]
KPM-NR 32118, 32120, 65761.
- Scarus prasiognathos* Valenciennes, 1840 [Nishikibudai]
KPM-NR 30470.
- Scarus psittacus* Forsskål, 1775 [Omubudai]
KPM-NR 32626, 36788.
- Scarus rivulatus* Valenciennes, 1840 [Sujibudai]
KPM-NR 32627.

- Scarus rubroviolaceus* Bleeker, 1847 [Nagabudai]
KPM-NR 63923, 64079.
- Scarus schlegeli* (Bleeker, 1861) [Obibudai]
KPM-NR 32122, 64066, 64069, 64073, 64111, 65757, 65771.
- Scarus spinus* (Kner, 1868) [Shiroobudai]
KPM-NR 32631, 65775.

Family Pinguipedidae

- Parapercis clathrata* Ogilby, 1910 [Yotsumetoragisu]
KPM-NR 65816.
- Parapercis cylindrica* (Bloch, 1792) [Dandaratoragisu]
KPM-NI 4751; KPM-NR 30480, 32127, 32633, 52113, 61285.
- Parapercis millepunctata* (Günther, 1860) [Wanuketoragisu]
KPM-NR 30481, 32125, 32128, 88654.
- Parapercis multiplicata* Randall, 1984 [Sangotoragisu]
KPM-NR 30483, 30755, 32126, 36795, 64140.
- Parapercis polyophtalma* (Cuvier, 1829) [Ogurotoragisu]
KPM-NI 4030; KPM-NR 28529, 30484, 32124, 52126, 65836, 66195.
- Parapercis schauinslandii* (Steindachner, 1900) [Hawaitoragisu]
KPM-NI 4111; KPM-NR 30482, 32632, 52129, 64006, 64032, 64056, 66196.
- Parapercis snyderi* Jordan et Starks, 1905 [Koraitoragisu]
KPM-NR 36401.
- Parapercis* sp. 1 of Shimada, 2002 [Oyogitoragisu]
KPM-NI 29; KPM-NR 36611, 80935, 80949-80950, 80959.
- Parapercis tetracantha* (Lacepède, 1801) [Madaratoragisu]
KPM-NR 64088.

Family Trichonotidae

- Trichonotus elegans* Shimada et Yoshino, 1984 [Ryuguberagimpo]
KPM-NR 36792-36793.
- Trichonotus setiger* Bloch et Schneider, 1801 [Beragimpo]
KPM-NR 30770-30771, 36614, 36794, 61286.
- Linnichthys nitidus* Smith, 1958 [Minamitobigimpo]
KPM-NI 8544; KPM-NR 54340.

Family Tripterygiidae

- Enneapterygius bahasa* Fricke, 1997 [Gomafuhebigimpo]
KPM-NI 4129; KPM-NR 32138, 52172, 61287.
- Enneapterygius flavoccipitis* Shen, 1994 [Erimakihebigimpo]
Enneapterygius flavoccipitis: Shimojyo and Hayashi, 2000: 48, fig. 7.
KPM-NI 4787; KPM-NR 52169.
- Enneapterygius philippinus* (Peters, 1868) [Kusagimpo]
KPM-NI 8498-8500, 10671-10673, 10809; KPM-NR 32636.
- Enneapterygius rhabdotus* Fricke, 1994 [Kurenaihebigimpo]
KPM-NR 30486, 30495, 36615-36616, 80964.
- Remarks. This species was newly added to the Japanese fish fauna by Yoshigou and Yoshino (2002).
- Enneapterygius rubicauda* Shen, 1994 [Akamadarahebigimpo]
Enneapterygius rubicauda: Shimojyo and Hayashi, 2000: 49, fig. 8.
KPM-NI 4803; KPM-NR 52197.
- Enneapterygius signicauda* Fricke, 1997 [Ogurohebigimpo]
Enneapterygius signicauda: Shimojyo and Hayashi, 2000: 51, fig. 9.
KPM-NI 5073-5074.
- Enneapterygius similis* Fricke, 1997 [Somewakehebigimpo]
Enneapterygius similis: Shimojyo and Hayashi, 2000: 52, fig. 10.
KPM-NI 5040; KPM-NR 30489, 52174.
- Enneapterygius tutuilae* Jordan et Seale, 1906 [Segurohebigimpo]
KPM-NR 36618, 61289-61290.



Fig. 19. *Helcogramma* sp., KPM-NR 66255, Ie-jima Island, 4m depth, photo by T. Nomura.



Fig. 20. *Cirripectes randalli*, KPM-NR 36621, Ie-jima Island, 2m depth, photo by K. Yunokawa.

***Helcogramma* sp. (Fig. 19)**

KPM-NR 32135-32137, 36402, 65807, 66175, 66255-66256.

Remarks. This is a very common species in Ie-jima Island, but the taxonomic status is unknown.

***Helcogramma inclinata* (Fowler, 1946) [Ayahebigimpo]**

KPM-NI 4914.

***Helcogramma striatum* Hansen, 1986 [Tatejimahebigimpo]**

KPM-NI 4110; KPM-NR 28520, 30494, 32133-32134, 52210, 65808.

***Norfolkia brachylepis* (Schultz, 1960) [Kokutennisehebigimpo]**

KPM-NI 4926; KPM-NR 61288.

***Norfolkia thomasi* Whitley, 1964 [Nisehebigimpo]**

KPM-NI 4788, 10740, 10884; KPM-NR 52221, 80955.

***Ucla xenogrammus* Holleman, 1993 [Kasurihebigimpo]**

KPM-NI 4987, 10713, 10772; KPM-NR 32129-32130, 32634-32635, 36799, 52208, 66201.

Family Blenniidae

***Andamia tetradactylus* (Bleeker, 1858) [Yodarekake]**

KPM-NI 4031; KPM-NR 52258.

***Aspidontus dussumieri* (Valenciennes, 1836) [Kurosujigimpo]**

KPM-NR 36623.

***Aspidontus taeniatus taeniatus* Quoy et Gaimard, 1834**

[Nisekurosujigimpo]

KPM-NI 4773; KPM-NR 26257, 29968, 52257.

***Atrosalarias fuscus holomelas* (Günther, 1872) [Indokaeruuo]**

KPM-NI 4752; KPM-NR 29593, 32179-32181, 32652, 36803, 52256, 61291.

***Blenniella bilitonensis* (Bleeker, 1858) [Hohogurogimpo]**

KPM-NI 8484, 8487, 8491-8494, 8496, 10682; KPM-NR 30513-30514, 32642-32643, 36802, 54306, 54309.

***Blenniella chrysospilos* (Bleeker, 1857) [Montsukikaeruuo]**

Blenniella chrysospilos: Kodato, 1999: 4, fig. 3.

KPM-NR 32156, 32186.

***Cirripectes castaneus* (Valenciennes, 1836) [Tategamikaeruuo]**

Cirripectes castaneus: Suzuki *et al.*, 1999: 5, figs. 6-11.

KPM-NI 4130, 4879-4880, 4912, 4949, 4957; KPM-NR 19484, 30502-30505, 32141-32142, 32145, 32174-32175, 32639, 52247, 52253-52254, 66241.

***Cirripectes imitator* Williams, 1985 [Amimeminokaeruuo]**

Cirripectes imitator: Suzuki *et al.*, 1999: 5, figs. 4, 5.

KPM-NI 4958-4960; KPM-NR 30506, 32143-32144, 52248-52250.

***Cirripectes polyzona* (Bleeker, 1868) [Minokaeruuo]**

KPM-NR 22020.

***Cirripectes randalli* Williams, 1988 (Fig. 20)**

KPM-NR 30508, 36621.

Remarks. The photographs agree well with the figures of the original description given by Williams (1988), but specimens have not been obtained yet from Japan.

***Cirripectes stigmaticus* Strasburg et Schultz, 1953**

[Inazumatategamikaeruuo]

KPM-NR 32640-32641, 36620.

***Crossosalarias macrospilus* Smith-Vaniz et Springer, 1971**

[Erigurogimpo]

KPM-NI 8436; KPM-NR 28538, 30509, 32157, 32644, 54260, 66222, 88851.

***Ecsenius bicolor* (Day, 1888) [Futairokaeruuo]**

KPM-NI 4104, 4777, 4798, 10821; KPM-NR 30510-30511, 32153, 32182-32183, 52243-52244, 64009.

***Ecsenius lineatus* Klausewitz, 1962 [Hitosujigimpo]**

KPM-NI 4037, 10695; KPM-NR 10311-10312, 28524, 28537, 30499, 32154, 52240, 64060, 65833, 88906.

***Ecsenius midas* Starck, 1969 [Hanadaigimpo]**

KPM-NI 4064; KPM-NR 30493, 32191, 52237.

***Ecsenius oculus* Springer, 1971 [Goishigimpo]**

Ecsenius oculus: Kodato, 1999: 4, fig. 1.

KPM-NI 4893, 4917; KPM-NR 21798, 30490, 32155, 61296-61297, 80942, 80957.

***Ecsenius yaeyamaensis* (Aoyagi, 1954) [Ishigakikaeruuo]**

KPM-NI 8518; KPM-NR 30498, 32158-32166, 32184-32185, 54314, 66181, 66225, 86597.

***Entomacrodus decussatus* (Bleeker, 1858) [Kikaikaeruuo]**

KPM-NI 4961; KPM-NR 52233.

***Entomacrodus striatus* (Valenciennes, 1836) [Sujigimpo]**

KPM-NI 2534; KPM-NR 52228.

***Exallias brevis* (Kner, 1868) [Sedakagimpo]**

KPM-NI 4857, 5054; KPM-NR 19600, 30507, 32139-32140, 32172-32173, 32637-32638, 52226-52227, 88667.

***Glyptoparus delicatulus* Smith, 1959 [Yaitogimpo]**

KPM-NR 30500, 32645.

***Istiblennius edentulus* (Forster et Schneider, 1801) [Nisekaeruuo]**

KPM-NI 8485, 8488-8490, 10787, 10789, 10799; KPM-NR 54307, 54310.

***Istiblennius lineatus* (Valenciennes, 1836) [Senkaeruuo]**

KPM-NI 8483, 8495; KPM-NR 54305.

***Meiacanthus atrodorsalis atrodorsalis* (Günther, 1877) [Ogonnijigimpo]**

KPM-NR 30496, 32188, 88879.

- Meiacanthus ditrema* Smith-Vaniz, 1976 [Satsukigimpo]
KPM-NR 30501, 32190.
- Meiacanthus grammistes* (Valenciennes, 1836) [Higenijigimpo]
KPM-NR 22307, 32169.
- Meiacanthus kamoharai* Tomiyama, 1956 [Kamoharagimpo]
KPM-NI 4009, 4753; KPM-NR 28542, 30492, 30739, 32189,
52284, 52285.
- Nannosalarias nativitatis* (Regan, 1909) [Hinagimpo]
Nannosalarias nativitatis: Kodato, 1999: 4, fig. 2.
KPM-NI 4823, 4868-4869, 4947, 4950; KPM-NR 32146-32148,
32176-32178, 52286-52289, 61292-61294, 66257, 88653, 88665.
- Petroscirtes breviceps* (Valenciennes, 1836) [Nijigimpo]
KPM-NI 10701, 10839.
- Petroscirtes mitratus* Rüppell, 1830 [Hatatategimpo]
KPM-NR 32167-32168, 32653, 36804, 36805-36806, 88864-88865.
- Plagiotremus laudandus laudandus* (Whitley, 1961) [Inasegimpo]
KPM-NR 32654.
- Plagiotremus rhinorhynchos* (Bleeker, 1852) [Minamigimpo]
KPM-NR 32170-32171, 66235.
- Plagiotremus tapeinosoma* (Bleeker, 1857) [Tenkurosujigimpo]
KPM-NI 4874; KPM-NR 10350, 52298, 66178, 66229.
- Rhabdoblennius ellipes* (Jordan et Starks, 1906) [Rosokugimpo]
KPM-NI 10681; KPM-NR 36622.
- Salarias fasciatus* (Bloch, 1786) [Yaeyamagimpo]
KPM-NI 8486, 8497, 10679-10680; KPM-NR 30497,
32149-32152, 32646, 36800, 54308.
- Salarias luctuosus* Whitley, 1929 [Shimagimpo]
KPM-NI 4749; KPM-NR 32647-32651, 36801, 52303, 61295.
- Stanulus talboti* Springer, 1968 [Tsumarigimpo]
Stanulus talboti: Nomura, 1999: 1.
KPM-NI 2533, 4952, 5024; KPM-NR 26634, 30491, 32187,
52304-52306.

Family Gobiesocidae

- Diademichthys lineatus* (Sauvage, 1883) [Hashinagaubauo]
KPM-NR 30024, 31726.
- Discotrema crinophila* Briggs, 1976 [Umishidaubauo]
KPM-NR 27732, 32449-32450.
- Lepadichthys coccinotaenia* Regan, 1921 [Minamiubauo]
KPM-NR 63993.
- Pheraliodichthys* sp. (Fig. 21)
KPM-NI 5046.
Remarks. A specimen was collected at a dept of 2m in the Ie-jima
Island on 18 June 1988. This undescribed species is commonly found
in the Ryukyu Islands. It was recorded also from the Hachijo-jima
Island, the Izu Islands (Senou *et al.*, 2002: 225).

Family Callionymidae

- Dactylopus dactylopus* (Valenciennes, 1837) [Ipponteguri]
KPM-NR 30524, 32195, 32225.



Fig. 21. *Pheraliodichthys* sp., KPM-NI 5046 (= KPM-NR 50630),
Ie-jima Island, 2m depth, photo by H. Senou.

- Diplogrammus goramensis* (Bleeker, 1858) [Minamikobunumeri]
KPM-NR 32192-32194.
- Minysynchiropus kiyoae* (Fricke et Zaiser, 1983) [Himeteguri]
KPM-NI 2535-2537; KPM-NR 8332, 30519, 30525-30526,
32211, 32659-32662, 52315-52316, 52320, 88892-88894.
- Neosynchiropus morrisoni* (Schultz, 1960) [Sesokoteguri]
Neosynchiropus morrisoni: Kodato, 1998a: 4, fig. 3.
KPM-NR 8549, 21799, 30521-30522, 32206-32208, 61310, 65869.
- Neosynchiropus moyeri* (Zaiser et Fricke, 1985) [Miyaketeguri]
Neosynchiropus moyeri: Kodato, 1998a: 4, fig. 2.
KPM-NI 4726, 4835, 10741; KPM-NR 30515, 32209, 32215-32224,
32658, 36807, 52330-52331, 61308-61309, 66223, 80931-80932, 88672.
- Neosynchiropus ocellatus* (Pallas, 1770) [Kowanteguri]
KPM-NI 8476-8477, 10675; KPM-NR 30516-30517, 30520,
32210, 36808-36811, 54298-54299, 61303-61307.
- Paradiplogrammus corallinus* (Gilbert, 1905) [Sangohanabinumeri]
KPM-NR 36814.
- Paradiplogrammus enneactis* (Bleeker, 1879) [Hanabinumeri]
KPM-NR 36812, 61298.
- Pterosynchiropus splendidus* (Herre, 1927) [Nishikiteguri]
Pterosynchiropus splendidus: Kodato, 1998a: 4, fig. 1.
KPM-NR 21800, 30523, 32196-32205, 32212-32214, 32655-32657,
61299-61302.

Family Gobiidae

- Amblyeleotris diagonalis* Polunin et Lubbock, 1979 [Hachimakidatehaze]
KPM-NR 30614, 36626, 61325-61326, 64003, 66203.
- Amblyeleotris guttata* (Fowler, 1938) [Yamabukihaze]
KPM-NR 30608, 30743, 32346-32347.
- Amblyeleotris melanocephala* Aonuma, Iwata et Yoshino, 2000
[Zugurodatehaze]
KPM-NR 36625.
- Amblyeleotris ogasawarensis* Yanagisawa, 1978 [Minamidatehaze]
KPM-NR 30610, 61327, 63998, 64024, 64080.
- Amblyeleotris periophthalma* (Bleeker, 1853) [Dandaradatehaze]
KPM-NR 30611, 32348, 32703-32704.
- Amblyeleotris randalli* Hoese et Steene, 1978 [Nichirindatehaze]
KPM-NR 38313.
- Amblyeleotris steinitzi* (Klausewitz, 1974) [Himedatehaze]
KPM-NI 4750; KPM-NR 28530, 30609, 30753, 30779,
32705-32707, 52438, 63996-63997, 64024, 64160, 64162.
- Amblyeleotris wheeleri* (Polunin et Lubbock, 1977) [Kubiakahaze]
KPM-NR 10293, 30612, 32349, 65814, 65859.
- Amblyeleotris yanoi* Aonuma et Yoshino, 1996 [Yanodatehaze]
KPM-NR 30613, 30751, 32350, 32352, 36829.
- Amblygobius hectori* (Smith, 1957) [Kinsenhaze]
KPM-NR 32325.
- Amblygobius nocturnus* (Herre, 1945) [Hohobenisarasahaze]
KPM-NI 4027, 4716-4718, 4976, 8583; KPM-NR 30565,
32317-32319, 32714-32715, 52444-52446.
- Amblygobius phalaena* (Valenciennes, 1837) [Sarasahaze]
KPM-NI 4985, 8569; KPM-NR 27735, 30566, 30607,
32320-32324, 36832-36833, 52447, 54358.
- Asterropteryx semipunctata* Rüppell, 1830 [Hoshihaze]
KPM-NI 11, 4024-4025, 4077, 4079, 4089, 4091, 4707,
4719, 4757, 4763, 8564-8566; KPM-NR 30593, 32326-32331,
52460-52461, 52466-52470, 54353-54355.
- Bathygobius cocosensis* (Bleeker, 1854) [Sujikumohaze]
KPM-NI 8478-8480, 8502, 10793; KPM-NR 54300-54302.
- Bathygobius cyclopterus* (Valenciennes, 1837) [Yahazuhaze]
KPM-NI 10677, 10792.

- Bathygobius padangensis* (Bleeker, 1851) [Kuroyahazuhaze]
KPM-NI 8481-8482, 8501; KPM-NR 36827, 54303-54304.
- Bryaninops erythroptus* (Jordan et Seale, 1906) [Irawakegarasuhaze]
KPM-NR 30599, 36403.
- Bryaninops natans* Larson, 1985 [Akamehaze]
KPM-NR 28540, 32370, 32686.
- Bryaninops* sp. 2 of Suzuki and Shibukawa in Senou (ed.), 2004
KPM-NR 32690-32691.
- Bryaninops yongei* (Davis et Cohen, 1969) [Garasuhaze]
KPM-NR 30595, 32687-32688.
- Cabillus* sp. (Fig. 22)
KPM-NI 4759; KPM-NR 53081.
Remarks. A specimen was collected at depths of 4-7m of a harbor on 15 June 1998. The taxonomic status is unknown.
- Callogobius flavobrunneus* (Smith, 1958) [Zungurihaze]
KPM-NI 4087, 4997; KPM-NR 53123-53124.
- Callogobius hasseltii* (Bleeker, 1851) [Okinawahaze]
KPM-NI 4088, 4995-4996, 4998; KPM-NR 30604, 32226, 533084-53086.
- Callogobius maculipinnis* (Fowler, 1918) [Katahohaze]
KPM-NR 32663.
- Callogobius okinawae* (Snyder, 1908) [Namerahaze]
KPM-NI 4090; KPM-NR 53126.
- Callogobius* sp. (Fig. 23)
KPM-NI 4755; KPM-NR 53149.
Remarks. A specimen was collected at depths of 4-7m of a harbor on 15 June 1998. The taxonomic status is unknown.
- Cryptocentrus albidorsus* (Yanagisawa, 1978) [Shiroobihaze]
KPM-NR 32701.
- Cryptocentrus caeruleomaculatus* (Herre, 1933) [Takanohahaze]
KPM-NR 29602, 30563-30564, 32342-32344, 61324, 61336.
- Cryptocentrus nigrocellatus* (Yanagisawa, 1978) [Kurohoshihaze]
KPM-NR 30561, 32345.
- Cryptocentrus singapurensis* (Herre, 1936) [Oiranhaze]
KPM-NR 32702.
- Cryptocentrus strigiliceps* (Jordan et Seale, 1906) [Hinomaruhaze]
KPM-NR 30562, 32380.



Fig. 22. *Cabillus* sp., KPM-NI 4759 (= KPM-NR 53081), Ie-jima Island, photo by H. Senou.



Fig. 23. *Callogobius* sp., KPM-NI 4755 (= KPM-NR 53149), Ie-jima Island, 4-7m depth, photo by H. Senou.

- Ctenogobius feroculus* Lubbock et Polunin, 1977 [Himeshinobihaze]
KPM-NR 30553, 32354, 32381.
- Ctenogobius pomastictus* Lubbock et Polunin, 1977 [Shinobihaze]
KPM-NR 22600, 30550-30552, 32284-32288, 32352-32353, 61328-61329, 88867.
- Ctenogobius tangaroi* Lubbock et Polunin, 1977 [Hatatateshinobihaze]
KPM-NR 30554, 32289-32292, 64063, 65858.
- Echinogobius hayashii* Iwata, Hosoya et Niimura, 1998
[Moyoshinobihaze]
KPM-NR 21805, 30555, 32682, 32719, 36822-36823, 64016.
- Eviota albolineata* Jewett et Lachner, 1983 [Shiroisohaze]
KPM-NI 4794-4795, 4891, 4916, 4919; KPM-NR 30587, 32252, 52514-52515, 61315, 66263-66264, 88866.
- Eviota cometa* Jewett et Lachner, 1983 [Nisekurosujiisohaze]
KPM-NR 30583.
- Eviota distigma* Jordan et Seale, 1906 [Kobitoisohaze]
KPM-NI 4704, 8437, 8546; KPM-NR 52530, 54261, 54342.
- Eviota fasciola* Kamella et Lachner, 1981 [Toranokoisohaze]
KPM-NI 4793, 4887, 5032, 5045, 10657; KPM-NR 22022, 32255, 52533-52534, 66261-66262.
- Eviota infulata* (Smith, 1957) [Sumitsukiisohaze]
KPM-NI 4703, 4705; KPM-NR 32679, 52537.
- Eviota japonica* Jewett & Lachner 1983 [Minamiisohaze]
KPM-NR 32676.
- Eviota latifasciata* Jewett et Lachner, 1983 [Obiisohaze]
KPM-NI 4094-4095, 5082; KPM-NR 52540-52541, 80940, 88691.
- Eviota melasma* Lachner et Kamella, 1980 [Akaoshiiisohaze]
KPM-NI 4003, 5020, 10693, 10715-10717, 10720, 10768-10770, 10829, 10887; KPM-NR 30580, 32257-32258, 32365, 32677-32678, 52542-52543, 66183, 88888.
- Eviota prasina* (Klunzinger, 1871) [Nanyomidorihaze]
KPM-NI 10795-10796.
- Eviota prasites* Jordan et Seale, 1906 [Aoisohaze]
KPM-NI 10690, 10692, 10723, 10767; KPM-NR 32249-32250.
- Eviota* sp. 4 of Akihito *et al.*, 2002 [Hanaguroisohaze]
KPM-NI 4942, 10691; KPM-NR 29597, 30582, 30586, 32251, 32253-32254, 52581, 64161, 65860, 66200.
- Eviota* sp. 4 of Suzuki and Shibukawa in Senou (ed.), 2004
KPM-NR 30584, 88853.
- Eviota* sp. 8 of Suzuki and Shibukawa in Senou (ed.), 2004
KPM-NR 30581, 61316, 66238.
- Eviota* sp. 11 of Suzuki and Shibukawa in Senou (ed.), 2004
KPM-NI 4081.
- Eviota zebrina* Lachner et Kamella, 1978 [Osujisohaze]
KPM-NR 32256.
- Exyrias belissimus* (Smith 1959) [Obakeinkohaze]
KPM-NR 30545, 32269, 32716.
- Flabelligobius* sp. 3 of Suzuki and Shibukawa in Senou (ed.), 2004
KPM-NR 27586.
- Fusigobius duospilus* Hoese et Reader, 1985 [Sehoshisankakuhaze]
KPM-NI 8453, 10714, 10746, 10823; KPM-NR 30539-30540, 32332-32334, 32713, 54277, 66266, 88902.
- Fusigobius gracilis* (Randall, 2001) [Sesujisankakuhaze]
KPM-NI 4980, 8456; KPM-NR 30538, 30765, 32712, 36835-36836, 52674, 54280, 61334, 66199.
- Fusigobius humeralis* (Randall, 2001) [Kataboshisankakuhaze]
KPM-NI 10872.
- Fusigobius inframaculatus* (Randall, 1994) [Hatatatesankakuhaze]
KPM-NI 4071; KPM-NR 13727, 30536, 32337, 52665, 61332.
- Fusigobius melacron* (Randall, 2001) [Tsumaguroisankakuhaze]
KPM-NR 64158.

- Fusigobius neophytus* (Günther, 1877) [Sankakuhaze]
KPM-NI 4722, 4745; KPM-NR 30537, 32335-32336, 36834, 52667, 61333.
- Gnatholepis anjerensis* (Bleeker, 1851) [Omonhaze]
KPM-NI 4100; KPM-NR 30533, 32273-32274, 52681, 61319.
- Gnatholepis cauerensis cauerensis* (Bleeker, 1853) [Kataboshiomonhaze]
KPM-NI 4058-4059, 4744, 4764; KPM-NR 30535, 30750, 30766, 32271-32272, 52682-52684.
- Gobiodon okinawae* Sawada, Arai et Abe, 1972 [Kataboshiomonhaze]
KPM-NR 32378.
- Gobiodon quinquestrigatus* (Valenciennes, 1837) [Futairosangohaze]
KPM-NI 4069, 4075, 4096; KPM-NR 52697-52699.
- Gobiodon* sp. 1 of Akihito *et al.*, 2002 [Kobanhaze]
KPM-NR 30601, 32259, 32368, 36630.
- Gobiodon* sp. 4 of Akihito *et al.*, 2002 [Tasujikobanhaze]
KPM-NR 32681.
- Gobiodon* sp. 6 of Akihito *et al.*, 2002 [Irezumikobanhaze]
KPM-NI 8523, 8525; KPM-NR 54319, 54321.
- Gobiodon unicolor* (Castelnaud, 1873) [Mujikobanhaze]
KPM-NI 4050.
- Istigobius decoratus* (Herre, 1927) [Hoshikazarihaze]
KPM-NI 4073; KPM-NR 30531, 30764, 32276-32277, 32685, 52728, 61322, 64019.
- Istigobius goldmanni* (Bleeker, 1852) [Himekazarihaze]
KPM-NR 36824, 61320-61321.
- Istigobius rigilius* (Herre, 1953) [Madarakazarihaze]
KPM-NI 4747-4748; KPM-NR 28541, 30532, 32275, 52732-52733.
- Lotilia graciliosa* Klauswitz, 1960 [Odorihaze]
KPM-NR 10325, 30606, 32282-32283, 32374.
- Macrodontogobius wilburi* Herre, 1936 [Madarahaze]
KPM-NI 4092, 4099, 4720-4721, 4756; KPM-NR 30527-30530, 30534, 32270, 52743-52746.
- Oplopomus oplopomus* (Valenciennes, 1837) [Keshohaze]
KPM-NI 4966, 4982, 4988; KPM-NR 8331, 30615, 32262-32263, 32266-32369, 32375-32376, 52785-52787, 61317-61318.
- Paragobiodon echinocephalus* (Rüppell, 1830) [Darumahaze]
KPM-NI 4010, 4053; KPM-NR 52628-52629.
- Paragobiodon lacunicolus* (Kendall et Goldsborough, 1911)
KPM-NR 80960.
- Paragobiodon xanthosomus* (Bleeker, 1852) [Akanedarumahaze]
KPM-NI 4020, 4051, 4742-4743, 4963-4964, 4991; KPM-NR 30600, 36430, 52633-52639.
- Pleurosicya coerulea* Larson, 1990 [Hiraumitakehaze]
KPM-NR 32278.
- Pleurosicya micheli* Fourmanoir, 1971 [Akasujiumitakehaze]
KPM-NI 4888, 8522; KPM-NR 30597-30598, 32279-32280, 32371, 54318.
- Pleurosicya mossambica* Smith, 1959 [Seboshiumitakehaze]
KPM-NI 8521; KPM-NR 30596, 30768, 32694, 36018, 36404, 36826, 54317.
- Priolepis cincta* (Regan, 1908) [Benkeihaze]
KPM-NI 4715, 4796, 4884-4885, 5010, 5049-5050, 8417, 10694, 10816-10817; KPM-NR 32239, 52810-52812, 54242.
- Priolepis fallacincta* Winterbottom et Burrige, 1992 [Kobenkeihaze]
KPM-NI 2540, 4039, 4102, 4727, 8418-8422, 8545, 10777-10778; KPM-NR 52806-52808, 54243-54247, 54341.
- Priolepis latifascima* Winterbottom et Burrige, 1993 [Futosujirezumihaze]
KPM-NI 5044, 5075; KPM-NR 30569, 30787, 32240, 52821.
- Priolepis semidoliata* (Valenciennes, 1837) [Irezumihaze]
KPM-NI 10676.
- Psilogobius prolatus* Watson et Lachner, 1985 [Haramakihaze]
KPM-NI 4119; KPM-NR 30547, 32311-32316, 32339, 52793.
- Stonogobiops nematodes* Hoese et Randall, 1982 [Hirenaganejirimbo]
Stonogobiops nematodes: Yunokawa, 1992: 6, fig. 1.
KPM-NR 32698-32699, 64002.
- Stonogobiops yasha* Yoshino et Shimada, 2001 [Yashahaze]
KPM-NR 27733, 28528, 30559, 32340-32341, 32700, 36828, 36830, 64000, 64033.
- Sueviota* sp. 1 of Suzuki and Shibukawa in Senou (ed.), 2004
KPM-NR 80938-80939.
- Tomiyamichthys alleni* Iwata, Ohnishi et Hirata, 2000 [Himeonihaze]
KPM-NR 36627.
- Tomiyamichthys oni* (Tomiyama, 1936) [Onihaze]
KPM-NR 30560, 32281, 32697, 64031, 64127.
- Trimma caesiura* Jordan et Seale, 1906 [Benihaze]
KPM-NI 4083-4084, 4128, 4886, 5013, 5018-5019; KPM-NR 30575-30576, 30794, 32243-32244, 32364, 52967, 52968-52970, 53001.
- Trimma caudomaculatum* Yoshino et Araga, 1975 [Aogihaze]
Trimma caudomaculatum: Yunokawa, 1993: 7, fig. 1.
KPM-NI 4710-4712, 4714, 4812, 4814-4816, 4881, 4909, 5012, 10758-10763, 10827, 10861, 10869; KPM-NR 10291, 30573, 32241-32242, 52971-52975, 52979-52980, 64123, 65801, 88837.
- Trimma emeryi* Winterbottom 1985 [Urokobenihaze]
KPM-NI 2532, 4001, 4113, 4115, 4127, 4791-4792, 8554-8555, 10689, 10721, 10888; KPM-NR 52981-52985, 52989, 54345-54346.
- Trimma macrophthalmum* (Tomiyama, 1936) [Omehaze]
KPM-NI 4728, 5078-5081; KPM-NR 52997.
- Trimma naudei* Smith, 1957 [Chigobenihaze]
KPM-NI 4082, 10774-10775; KPM-NR 53002.
- Trimma okinawae* (Aoyagi, 1949) [Okinawabenihaze]
KPM-NI 4002, 4004, 4043, 4057, 4116, 4136, 4713, 4775, 5047, 8410, 8412, 8556, 10726-10736, 10738-10739, 10747-10750, 10779-10785, 10818, 10857, 10863-10866; KPM-NR 30578, 32245, 32667, 36631, 53006, 53007-53009, 53012, 53014, 53018, 54235, 54237, 61312.
- Trimma sheppardi* Winterbottom, 1984 [Ningyobenihaze]
KPM-NI 10852; KPM-NR 61311.
- Trimma* sp. 1 of Suzuki and Shibukawa in Senou (ed.), 2004
KPM-NI 4033, 4042, 4131, 4811, 4813, 4826, 10737, 10826, 10853, 10862, 10870-10871, 10873, 10883, 10886; KPM-NR 30793, 32674, 34523, 36819, 52885-52886, 61313-61314, 66237.
- Trimma* sp. 2 of Suzuki and Shibukawa in Senou (ed.), 2004
KPM-NI 10881-10882, 10885; KPM-NR 21807, 30577, 80319.
- Trimma* sp. 7 of Suzuki and Shibukawa in Senou (ed.), 2004
KPM-NI 8409; KPM-NR 54234.
- Trimma* sp. 10 of Suzuki and Shibukawa in Senou (ed.), 2004
KPM-NR 21806, 32366, 61911, 88662.
- Trimma* sp. 14 of Suzuki and Shibukawa in Senou (ed.), 2004
KPM-NI 4101, 4109; KPM-NR 29591, 30579, 30789, 34519, 36820, 53022, 66265, 80766.
- Trimma taylori* Lobel, 1979 [Oyogibenihaze]
KPM-NI 4032, 4041, 8553, 10752-10756, 10825; KPM-NR 30570-30572, 32246-32247, 32367, 32668-32673, 36821, 52917-52918, 54344.
- Trimma winchi* Winterbottom, 1984 [Fujinabenihaze]
Trimma winchi: Suzuki and Senou, 2001: 2, figs. 1-3.
KPM-NI 4810; KPM-NR 52883.



Fig. 24. *Trimmatom* sp., KPM-NI 5005 (= KPM-NR 53114), Ie-jima Island, 7m depth, photo by H. Senou.

***Trimmatom* sp.** (Fig. 24)

KPM-NI 5005; KPM-NR 53114.

Remarks. The specimen was collected at a depth of 7m on 18 June 1998. The taxonomic status is unknown.

***Trimmatom* sp.** 1 of Suzuki and Shibukawa in Senou (ed.), 2004

KPM-NI 4106-4107, 4730, 5071, 5076; KPM-NR 53099-53101.

Valenciennesa bella Hoese et Larson, 1994 [Akanehaze]

KPM-NI 5009; KPM-NR 21804, 30588-30589, 32232-32233, 32358, 53026, 64087.

Valenciennesa helsdingenii (Bleeker, 1858) [Kuroitohaze]

KPM-NR 32357, 32664, 36816.

Valenciennesa longipinnis (Lay et Bennett, 1839) [Sazanamihaze]

Valenciennesa longipinnis: Kodato, 1998b: 6, fig. 1.

KPM-NR 30590, 32227-32229, 32356, 32665, 36817.

Valenciennesa puellaris (Tomiyama, 1956) [Otomehaze]

KPM-NR 30591, 30776, 32230, 64005, 64128, 64157, 66204.

Valenciennesa strigata (Broussonet, 1782) [Akahachihaze]

Valenciennesa strigata: Yunokawa, 1993: 7, fig. 3.

KPM-NR 30592, 32231, 32359, 32666, 36818.

Vanderhorstia ambanoro (Fourmanoir, 1957) [Shimaorihaze]

Vanderhorstia ambanoro: Kodato, 1998b: 6, fig. 2.

KPM-NR 30558, 32304-32305, 32373, 32708-32709, 36831, 61331.

***Vanderhorstia* sp.** B of Suzuki and Shibukawa in Senou (ed.), 2004

[Yatsushihaze]

Vanderhorstia ornatisima: Kodato, 1998b: 6, fig. 3.

KPM-NI 4992-4993; KPM-NR 22601, 30556, 32293-32303, 32372, 53032-53033, 61330.

Yongeichthys criniger (Valenciennes, 1837) [Tsumugihaze]

KPM-NR 30546, 32684.

Family Microdesmidae

Gunnellichthys curiosus Dawson, 1968 [Nishikiomewarasubo]

KPM-NR 30616, 36840, 64004.

Gunnellichthys monostigma Smith, 1958 [Kuroeriomewarasubo]

KPM-NR 22023, 32383, 61337.

Gunnellichthys pleurotaenia Bleeker, 1858 [Omewarasubo]

KPM-NR 29592, 32725, 36839, 61335.

Gunnellichthys viridescens Dawson, 1968 [Daidaiomewarasubo]

KPM-NR 30617, 32724, 32726, 36405, 36841-36842, 64020, 64028.

Family Ptereleotridae

Nemateleotris decora Randall et Allen, 1973 [Akebonohaze]

Nemateleotris decora: Yunokawa, 1993: 7, fig. 2; Senou and Ota, 2002: 1, lower left fig.

KPM-NR 10322, 30618, 32234, 61339, 88652, 88661.

Nemateleotris magnifica Fowler, 1938 [Hatatahaze]

Nemateleotris magnifica: Senou and Ota, 2002: 1, upper left fig.

KPM-NI 8401; KPM-NR 10308, 30619, 32235-32236, 61338.

Parioglossus raoi (Herre, 1939) [Miyarabihaze]

KPM-NI 10651-10653, 11810-11811.

Ptereleotridae, indet. gen. and sp. 1 of Suzuki and Shibukawa in Senou (ed.), 2004

KPM-NI 30; KPM-NR 30620, 32338, 32379.

Ptereleotris evides (Jordan et Hubbs, 1925) [Kuroyurihaze]

KPM-NR 30542, 30769, 32723, 64078, 66177.

Ptereleotris grammica grammica Randall et Lubbock, 1982

[Sujikuroyurihaze]

Ptereleotris grammica grammica: Yunokawa, 1991: 6, fig. 1.

KPM-NR 21803, 30567, 32238.

Ptereleotris hanae (Jordan et Snyder, 1901) [Hanahaze]

KPM-NR 32722.

Ptereleotris heteroptera (Bleeker, 1855) [Ogurokuroyurihaze]

KPM-NR 29589-29590, 30543, 32237, 63950, 64098, 64100, 64103.

***Ptereleotris* sp.** 1 of Suzuki and Shibukawa in Senou (ed.), 2004

KPM-NR 36838.

***Ptereleotris* sp.** 2 of Suzuki and Shibukawa in Senou (ed.), 2004

Ptereleotris sp. 2: Suzuki and Shibukawa in Senou (ed.), 2004: 510.

KPM-NR 16544, 21802, 32360-32363, 36628.

***Ptereleotris* sp.** 3 of Suzuki and Shibukawa in Senou (ed.), 2004

KPM-NR 64035.

Ptereleotris zebra (Fowler, 1938) [Zeburahaze]

KPM-NR 21801, 30541.

Family Ephippidae

Platax orbicularis (Forsskål, 1775) [Nanyotsubameuo]

KPM-NI 8536-8537, 8547, 10835-10837; KPM-NR 36728, 54332-54333, 54343, 88872.

Platax pinnatus (Linnaeus, 1758) [Akakukuri]

KPM-NR 19582, 36592, 64076, 86643.

Platax boersii Bleeker, [Mikazukitsubameuo]

KPM-NR 88871.

Platax teira (Forsskål, 1775) [Tsubameuo]

KPM-NR 28900, 36727, 63917.

Family Siganidae

Siganus argenteus (Quoy et Gaimard, 1825) [Hanaaigo]

KPM-NR 16536, 32731-32732.

Siganus corallinus (Valenciennes, 1835) [Sangoaigo]

KPM-NR 32386, 65867, 88852.

Siganus fuscescens (Houttuyn, 1782) [Aigo]

KPM-NI 10684-10686; KPM-NR 32384-32385.

Siganus guttatus (Bloch, 1787) [Gomaigo]

KPM-NR 38320.

Siganus spinus (Linnaeus, 1758) [Amiaigo]

KPM-NR 29594, 32727-32730.

Siganus virgatus (Valenciennes, 1835) [Himeaigo]

KPM-NR 32734, 36844.

Siganus (Lo) unimaculatus (Evermann et Seale, 1907) [Hifukiaigo]

KPM-NR 32733, 36843.

Family Zanclidae

Zanclus cornutus (Linnaeus, 1758) [Tsunodashi]

KPM-NR 19343, 30622, 32387-32388, 63953, 63963, 64037.

Family Acanthuridae

- Acanthurus blochii* Valenciennes, 1835 [Osujikurohagi]
KPM-NR 36851.
- Acanthurus guttatus* Forster, 1801 [Gomaniza]
KPM-NR 36634.
- Acanthurus japonicus* (Schmidt, 1931) [Namidakurohagi]
KPM-NR 19444, 19492, 19527, 30639, 32398-32399, 63957, 86668-86669.
- Acanthurus leucopareius* (Jenkins, 1903) [Sujikurohagi]
KPM-NR 38353.
- Acanthurus lineatus* (Linnaeus, 1758) [Nijihagi]
KPM-NI 8472; KPM-NR 30634, 36431, 36866, 54296, 86665.
- Acanthurus nigricans* (Linnaeus, 1758) [Megane-kurohagi]
KPM-NR 30640, 36406, 63959, 86667.
- Acanthurus nigricaudus* Duncker et Mohr, 1929 [Kuromontsuki]
KPM-NR 30638.
- Acanthurus nigrofuscus* (Forsskål, 1775) [Naganiza]
KPM-NI 8512; KPM-NR 30645, 32390, 32396, 64143, 66179, 66184, 66211.
- Acanthurus olivaceus* Bloch et Schneider, 1801 [Montsukihagi]
KPM-NR 30710, 32395, 65818, 86671.
- Acanthurus pyroferus* Kittlitz, 1834 [Kuroguchiniza]
KPM-NR 19489, 30635-30637, 36407, 64072, 86666.
- Acanthurus thompsoni* (Fowler, 1923) [Ohagurohagi]
KPM-NR 30648, 36849.
- Acanthurus triostegus* (Linnaeus, 1758) [Shimahagi]
KPM-NI 8468, 8511; KPM-NR 30633, 32394, 54292-54293, 63968.
- Acanthurus xanthopterus* Valenciennes, 1835 [Kurohagi]
KPM-NR 36850.
- Ctenochaetus binotatus* Randall, 1955 [Kokutensazanamihagi]
KPM-NI 4902, 10711; KPM-NR 19379, 19451, 19487, 30643-30644, 30646-30647, 32389, 32740, 65850, 65853, 65874, 88891.
- Ctenochaetus striatus* (Quoy et Gaimard, 1825) [Sazanamihagi]
KPM-NI 4901; KPM-NR 30641-30642, 32741, 63990, 64042, 86660.
- Naso brevirostris* (Cuvier, 1829) [Tsumaritenguhagi]
KPM-NR 32737, 36846.
- Naso hexacanthus* (Bleeker, 1855) [Tenguhagimodoki]
KPM-NR 30628, 32397, 66243.
- Naso lituratus* (Forster, 1801) [Miyakotenguhagi]
KPM-NR 30625-30626, 30627, 36848, 64015, 64141, 65793-65794, 86659.
- Naso lopezi* Herre, 1927 [Nagatenguhagimodoki]
KPM-NR 30629, 66212.
- Naso thynnoides* (Cuvier, 1829) [Bozuhagi]
KPM-NR 32736.
- Naso unicornis* (Forsskål, 1775) [Tenguhagi]
KPM-NR 30624, 32738, 36845, 64144, 65840, 65848.
- Naso vlamingii* (Valenciennes, 1835) [Sazanamitosakahagi]
KPM-NR 36847.
- Paracanthurus hepatus* (Linnaeus, 1766) [Nanyohagi]
KPM-NR 19340, 30632, 32393, 63989, 66244.
- Prionurus scalprum* Valenciennes, 1835 [Nizadai]
KPM-NR 30623, 32735.
- Zebrasoma flavescens* (Bennett, 1828) [Kiirohagi]
KPM-NR 32391.
- Zebrasoma scopas* (Cuvier, 1829) [Gomahagi]
KPM-NR 19445, 32392, 64014, 64036, 65792, 65873.
- Zebrasoma veliferum* (Bloch, 1795) [Hirenagahagi]
KPM-NR 30630-30631, 32739.

Family Sphyraenidae

- Sphyraena barracuda* (Walbaum, 1792) [Onikamasu]
KPM-NR 36635.
- Sphyraena obtusata* Cuvier, 1829 [Taiwankamasu]
KPM-NR 29579-29581, 29583, 30649-30650, 32742-32744.

Family Scombridae

- Euthynnus affinis* (Cantor, 1849) [Suma]
KPM-NR 64038.
- Grammatorcynus bilineatus* (Rüppell, 1836) [Nijosaba]
KPM-NR 30651-30654, 32400, 64040.
- Gymnosarda unicolor* (Rüppell, 1836) [Isomaguro]
KPM-NR 65802, 65804.
- Rastrelliger kanagurta* (Cuvier, 1816) [Gurukuma]
KPM-NR 64039, 88674.
- Scomberomorus commerson* (Lacepède, 1800) [Yokoshimasawara]
KPM-NR 36636.
- Thunnus albacares* (Bonnaterre, 1788) [Kihada]
KPM-NR 38341.

Order Pleuronectiformes**Family Bothidae**

- Asterorhombus filifer* Hensley & Randall 2003 (Figs. 25, 26)
KPM-NR 88854.
Remarks. The photograph agrees well with the description and

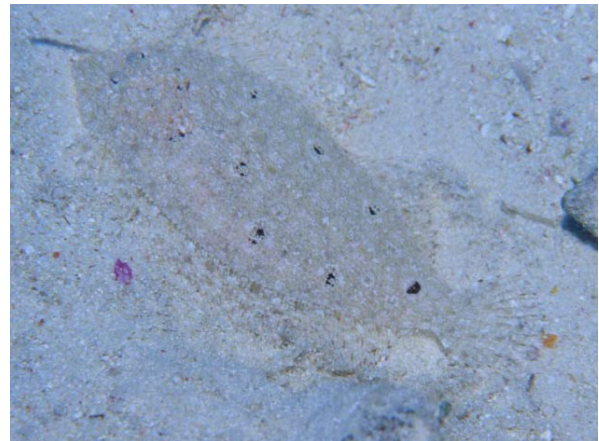


Fig. 25. *Asterorhombus filifer*, KPM-NR 88854, Ie-jima Island, 26m depth, photo by T. Nomura.



Fig. 26. *Asterorhombus filifer*, showing a free first dorsal fin ray, KPM-NR 88854, Ie-jima Island, 26m depth, photo by T. Nomura.

figures of *Asterorhombus filifer* given by Hensley (2005), but specimens have not been obtained yet from Japan.

Bothus mancus (Broussonet, 1782) [Mondarumagarei]
KPM-NR 32745-32746.

Bothus pantherinus (Rüppell, 1830) [Togedarumagarei]
KPM-NR 30657, 30659, 32401-32402, 36409.

Family Soleidae

Pardachirus pavoninus (Lacepède, 1802) [Minamiushinoshita]
KPM-NR 30658, 30660, 32403, 61340.

Synaptura marginata Boulenger, 1900 [Amamiushinoshita]
KPM-NR 32747, 36852.

Order Tetraodontiformes

Family Balistidae

Balistapus undulatus (Park, 1797) [Kumadori]
KPM-NR 30670-30671, 32413, 65831.

Balistoides conspicillum (Bloch et Schneider, 1801) [Mongarakawahagi]
KPM-NR 19448, 30665, 32407, 64142, 64169-64170.

Balistoides viridescens (Bloch et Schneider, 1801) [Gomamongara]
KPM-NR 19443, 30663-30664, 30719, 32414, 61341, 64090, 88889.

Melichthys vidua (Richardson, 1845) [Kuromongara]
KPM-NR 30662, 32404, 32410, 63987, 65851.

Odonus niger (Rüppell, 1836) [Akamongara]
KPM-NI 4866; KPM-NR 30661, 32409, 32752, 53323.

Pseudobalistes flavimarginatus (Rüppell, 1829) [Kiherimongara]
KPM-NR 32750, 88859.

Pseudobalistes fuscus (Bloch et Schneider, 1801) [Isomongara]
KPM-NR 36639, 64034.

Rhinecanthus aculeatus (Linnaeus, 1758) [Murasamemongara]
KPM-NR 30672, 32406.

Rhinecanthus rectangulus (Bloch et Schneider, 1801) [Tasukimongara]
KPM-NR 30673, 32411-32412, 63967, 88896.

Sufflamen bursa (Bloch et Schneider, 1801) [Musumehagi]
KPM-NR 19529, 30668-30669, 32415-32417, 36853, 66229.

Sufflamen chrysopterum (Bloch et Schneider, 1801) [Tsumajimongara]
KPM-NI 5061; KPM-NR 19536, 30666-30667, 32405, 32748-32749, 66171.

Sufflamen fraenatum (Latreille, 1804) [Meganehagi]
KPM-NR 30685, 64085.

Xanthichthys auromarginatus (Bennett, 1832) [Hoshimongara]
KPM-NR 30674-30676, 32418, 32751, 64012, 66234, 86701-86702, 88903.

Xanthichthys caeruleolineatus Randall, Matsuura et Zama, 1978
[Aosujimongara]
KPM-NR 38342.

Xanthichthys lineopunctatus (Hollard, 1854) [Sujinamemongara]
KPM-NR 32408.

Family Monacanthidae

Acreichthys hajam (Bleeker, 1852) [Togekawahagi]
KPM-NR 36854.

Aluterus scriptus (Osbeck, 1765) [Soshihagi]
KPM-NR 63921.

Cantherhines dumerilii (Hollard, 1854) [Hakuseihagi]
KPM-NR 30682, 32422, 32425, 63934.

Cantherhines fronticinctus (Günther, 1867) [Meganeumazurahagi]
KPM-NR 30681, 32423.

Cantherhines pardalis (Rüppell, 1837) [Amimeumazurahagi]
KPM-NI 4825; KPM-NR 30683-30684, 32427, 53334, 86708.

Oxymonacanthus longirostris (Bloch et Schneider, 1801)
KPM-NI 4733; KPM-NR 30679-30680, 32421, 32424, 53336.

Paraluteres prionurus (Bleeker, 1851) [Nokogirihagi]
KPM-NR 30677-30678, 32419-32420.

Paramonacanthus japonicus (Tilesius, 1809) [Yosogi]
KPM-NI 8543; KPM-NR 54339, 61343.

Pervagor janthinosoma (Bleeker, 1854) [Nishikikawahagi]
KPM-NI 4786; KPM-NR 32428, 32753, 53337, 88849.

Pervagor melanocephalus (Bleeker, 1853) [Nuriwakeawahagi]
KPM-NR 19461, 30687-30688, 32426, 61342.

Pervagor nigrolineatus (Herre, 1927) [Tatejimakahagi]
KPM-NR 29595.

Family Ostraciidae

Lactoria fornasini (Bianconi, 1846) [Shimaumisuzume]
KPM-NR 36641.

Ostracion cubicus Linnaeus, 1758 [Minamihakofugu]
KPM-NR 10290, 28333, 30689, 32429, 32754.

Ostracion meleagris meleagris Shaw, 1796 [Kurohakofugu]
KPM-NI 5057, 5070, 8402; KPM-NR 30690-30692, 32755-32756, 53360, 88885.

Family Tetraodontidae

Arothron caeruleopunctatus Matsuura, 1994 [Ararefugu]
KPM-NR 30702-30704, 32431.

Arothron hispidus (Linnaeus, 1758) [Sazanamifugu]
KPM-NR 30714, 32437, 36858, 64053, 65830.

Arothron mappa (Lesson, 1831) [Keshofugu]
KPM-NR 66232, 86752.

Arothron meleagris (Lacepède, 1798) [Mizorefugu]
KPM-NR 36857.

Arothron nigropunctatus (Bloch et Schneider, 1801) [Kokutenfugu]
KPM-NR 19430, 30700-30701, 32430, 63929.

Canthigaster amboinensis (Bleeker, 1864) [Gomafukinchakufugu]
KPM-NR 38335.

Canthigaster coronata (Vaillant et Sauvage, 1875) [Hanakinchakufugu]
KPM-NI 4936; KPM-NR 30693-30694, 32432-32433, 32759, 53363, 64081, 88900.

Canthigaster epilampra (Jenkins, 1903) [Monkikinchakufugu]
KPM-NR 30698, 32436, 32757-32758.

Canthigaster janthinoptera (Beeker, 1855) [Shiborikinchakufugu]
KPM-NI 4122, 4776; KPM-NR 22309, 30699, 32434-32435, 36856, 53364-53365.

Canthigaster solandri (Richardson, 1845)
KPM-NR 36642.

Canthigaster valentini (Bleeker, 1853) [Shimakinchakufugu]
KPM-NI 4890; KPM-NR 30695-30697, 36855, 65797, 86747.

Family Diodontidae

Diodon holocanthus Linnaeus, 1758 [Harisembon]
KPM-NI 8373; KPM-NR 19434, 30705, 32761, 36859, 53777, 61344, 64052, 65796, 66258, 86761.

Diodon hystrix Linnaeus, 1758 [Nezumifugu]
KPM-NR 32760.

Diodon liturosus Shaw, 1804 [Hitozuraharisembon]
KPM-NR 28519, 30706.

Acknowledgment

We would express our thanks to Masaki Takahashi and

Kiyoshi Asahina (College of Bioresource Sciences, Nihon University) for their help in compiling and analyzing huge data on fishes. Some fish specimens were obtained through help of Keisuke Imai. The following SCUBA divers contributed to constructing the KPM-NR: Tsutomu Asano, Yukiko Atsumi, Takahisa Fujishiro, Masataka Kawada, Kanako Kondo, Koichi Kono, Akihiko Mishiku, Shinsuke Nagai, Yoji Okata, Hajime Takano, Masae Ueda, Kimihiro Yamazaki, and Jiro Yoshiba. Our special thanks go to volunteers of the KPM who always help us with management of collections.

References

- Akihito, K. Sakamoto, Y. Ikeda & K. Sugiyama, 2002. Gobioidae. In Nakabo, T. (ed.), *Fishes of Japan with Pictorial Keys to the Species*, English ed. Tokai Univ. Press, Tokyo, 1139-1310, 1596-1619.
- Allen, G. R. and S. Bailey, 2002. *Chrysiptera albata*, a new species of damselfish (Pomacentridae) from the Phoenix Islands, Central Pacific Ocean. *aqua, J. Ichthyol. Aquat. Biol.*, **6**(1): 39-43.
- Allen, G. R. and A. R. Emery, 1985. A review of the pomacentrid fishes of the genus *Stegastes* from the Indo-Pacific, with descriptions of two new species. *Indo-Pacific Fishes*, (3): 1-31, pls. 1-3.
- Aonuma, Y. and T. Yoshino, 2002. Pomacentridae. In Nakabo, T. (ed.), *Fishes of Japan with Pictorial Keys to the Species*, English ed. Tokai Univ. Press, Tokyo, 918-950, 1567-1568.
- Gill, A. C. and H. Senou, 2002. *Lubbockichthys tanakai*, a new species of pseudoplesiopine dottyback from the West Pacific (Perciformes: Pseudochromidae). *aqua, J. Ichthyol. Aquat. Biol.*, **6**(1): 1-4.
- Hatooka, K., 2002. Pempheridae. In Nakabo, T. (ed.), *Fishes of Japan with Pictorial Keys to the Species*, English ed. Tokai Univ. Press, Tokyo, 878-879, 1562.
- Hayashi, M., 1990. Two new cardinalfish (Apogonidae: genus *Apogon*) from the Indo-west Pacific. *Sci. Rep. Yokosuka City Mus.*, (38): 7-18.
- Hensley, D. A., 2005. Revision of the genus *Asterorhombus* (Pleuronectiformes: Bothidae). *Copeia*, **2005**(3): 445-460.
- Kishimoto, H., T. Nakai, Y. Nakamura, M. Sekine and T. Yoshino, 2002. First record of the parrotfish, *Scarus fuscocaudalis*, from Japan, based on specimens. *I.O.P. Diving News*, **13**(11): 2-5. (In Japanese with English abstract.)
- Knapp, L. W., H. Imamura and M. Sakashita, 2000. *Onigocia bimaculata*, a new species of flathead fish (Scorpaeniformes: Platycephalidae) from the Indo-Pacific. *J.L.B. Smith Inst. Ichthyol., Spec. Publ.*, (64): 1-10.
- Kodato, H., 1998a. Ie-jima no umi. *I.O.P. Diving News*, **9**(3): 4. (In Japanese.)
- Kodato, H., 1998b. Ie-jima no umi: Gushi-gyoko nai no haze tachi. *I.O.P. Diving News*, **9**(10): 6. (In Japanese.)
- Kodato, H., 1999. Ie-jima no umi: shoen-jobu no kaeruuo-ru. *I.O.P. Diving News*, **10**(2): 4. (In Japanese.)
- Kodato, H., 2001. Ie-jima no umi: tenjikudai no nakama. *I.O.P. Diving News*, **12**(10): 6. (In Japanese.)
- Kuiter, R. H., 2003. A new pygmy seahorse (Pisces: Syngnathidae: Hippocampus) from Lord Howe Island. *Rec. Austr. Mus.*, **55**: 113-116.
- Mishiku, A. and H. Senou, 1999. A hybrid between *Chaetodon xanthurus* Bleeker, 1857 x *C. argentatus* Smith et Radcliffe, 1911. *I.O.P. Diving News*, **10**(3): 1. (In Japanese.)
- Nakabo, T., (ed.), 2000. *Fishes of Japan with Pictorial Keys to the Species*, Second ed. Tokai Univ. Press, Tokyo, lvi + 1748 pp. (In Japanese.)
- Nakabo, T., (ed.), 2002. *Fishes of Japan with Pictorial Keys to the Species*, English ed., Tokai Univ. Press, Tokyo, lxi + 1749 pp.
- Nielsen, J. G., D. M. Cohen, D. F. Markle and C. R. Robins, 1999. *FAO Species Catalogue. Vol. 18. Ophidiiform Fishes of the World (Order Ophidiiformes). An Annotated and Illustrated Catalogue of Pearlfishes, Cusk-eels, Brotulas and Other Ophidiiform Fishes Known to Date.* FAO, Rome, xi+178pp. (Published as *FAO Fisheries Synopsis*, No. 125, Vol. 18.)
- Nomura, T., 1995. *Apogon crassiceps* Garman. *I.O.P. Diving News*, **7**(1): 1. (In Japanese.)
- Nomura, T., 1996. *Cercamia eremia* (Allen). *I.O.P. Diving News*, **7**(7): 1. (In Japanese.)
- Nomura, T., 1999. *Stanulus talboti* Springer, 1968. *I.O.P. Diving News*, **10**(2): 1. (In Japanese.)
- Randall, J. E., 2004. On the status of the pomacentrid fish *Stegastes lividus* (Forster). *Ichthyol. Res.*, **51**(4): 389-391.
- Randall, J. E. and J. L. Earle, 2002. Review of Hawaiian razorfishes of the genus *Iniistius* (Perciformes: Labridae). *Pacific Sci.*, **56**(4): 389-402, pls. 1-3.
- Randall, J. E. and P. S. Lobel, 2003. *Xyrichtys halsteadii*, a new labrid fish from the central and western Pacific. *Bull. Mar. Sci.*, **72**(3): 971-977.
- Senou, H., 2002a. Serranidae. In Nakabo, T. (ed.), *Fishes of Japan with Pictorial Keys to the Species*, English ed. Tokai Univ. Press, Tokyo, 690-731, 1532-1540.
- Senou, H., 2002b. Hyojunwamei no anteika ni mukete [Towards stability of the standard Japanese name]. In Aoki, J., T. Okutani & K. Matsuura (eds.), *Mushi no na, kai no na, sakana no na* [Names of Insects, Shells and Fishes]. Tokai Univ. Press, Tokyo, 192-225, 229-230. (In Japanese.)
- Senou, H., (ed.), 2004. *A Photographic Guide to the Gobioid Fishes in Japan.* Heibonsha, Tokyo, 534 pp. (In Japanese.)
- Senou, H., K. Matsuura & G. Shinohara, 2006. Checklist of fishes in Sagami Bay with zoogeographical comments on shallow water fishes occurring along the coastlines under the influence of the Kuroshio Current. *Mem. Natn. Sci. Mus., Tokyo.* (In press.)
- Senou, H., T. Nomura and H. Kodato, 2000. *Pseudocheilinus ocellatus*. *I.O.P. Diving News*, **11**(4): 1. (In Japanese.)
- Senou, H. and M. Ota, 2002. A hybrid between *Nemateleotris magnifica* Fowler, 1938 and *N. decora* Randall et Allen, 1973. *I.O.P. Diving News*, **13**(5): 1. (In Japanese.)
- Senou, H., G. Shinohara, K. Matsuura, K. Furuse, S. Kato and T. Kikuchi, 2002. *Fishes of Hachijo-jima Island, Izu Islands Group, Tokyo, Japan.* *Mem. Nat. Sci. Mus., Tokyo*, (38): 195-237.
- Senou, H. and K. Yano, 1999. First record of a pipefish *Micrognathus brevirostris pygmaeus* from Japan. *I.O.P. Diving News*, **10**(5): 2-3. (In Japanese with English abstract.)
- Senou, H. and K. Yunokawa, 1995. New record of an anthiine fish, *Plectranthias pelicieri* (Perciformes: Serranidae) from the western Pacific. *I.O.P. Diving News*, **6**(9): 4-6. (In Japanese with English abstract.)
- Senou, H. and K. Yunokawa, 1996. *Bodianus* sp. *I.O.P. Diving News*, **7**(2): 1. (In Japanese.)
- Senou, H. and K. Yunokawa, 1998. *Oligopus robustus* (Smith et Radcliffe, 1913). *I.O.P. Diving News*, **9**(11): 1. (In Japanese.)
- Senou, H., K. Yunokawa and H. Hayashi, 1997. Record of a sand tile fish, *Hoplotalilus chlutayii* (Perciformes: Malacanthidae) from Ie-shima Island, the Ryukyu Islands. *I.O.P. Diving News*, **8**(12): 2-3. (In Japanese with English abstract.)
- Senou, H., K. Yunokawa and K. Yano, 1999. Two new records of damselfishes, *Chromis alpha* and *C. delta* (Perciformes:

- Pomacentridae), from the Japanese Archipelago. *I.O.P. Diving News*, **10**(3): 2-7. (In Japanese with English abstract.)
- Shimada, K., 2002. Labridae & Pinguipedidae. In Nakabo, T. (ed.), *Fishes of Japan with Pictorial Keys to the Species*, English ed. Tokai Univ. Press, Tokyo, 969-1013, 1059-1064, 1573-1579, 1586-1587.
- Shimojo, A. and M. Hayashi, 2000. Seven new records of tripterygid fishes from the coastal waters of Japan. *Sci. Rept. Yokosuka City Mus.*, (47): 39-58. (In Japanese with English abstract.)
- Suzuki, T. and H. Senou, 2001. First record of the gobiid fish *Trimma winchi* from Ie-shima Island, the Ryukyu Islands, Japan. *I.O.P. Diving News*, **12**(4): 2-4. (In Japanese with English abstract.)
- Suzuki, T., H. Senou, K. Yano and M. Hosokawa, 1999. First record of a blennioid fish *Cirripectes stigmanicus* from Iriomote Island, the Ryukyu Islands, Japan. *I.O.P. Diving News*, **10**(4): 2-6. (In Japanese with English abstract.)
- Williams, J. T., 1988. Revision and phylogenetic relationships of the blennioid fish genus *Cirripectes*. *Indo-Pacific Fishes*, (17): 1-78, pls. 1-7.
- Yamakawa, T., 1979. Studies of the fish fauna around the Nansei Islands, Japan. 1. Check list of fishes collected by Toshiji Kamohara and Takeshi Yamakawa from 1954 to 1971. *Rep. Usa Mar. Biol. Inst., Suppl.*, (1): 1-47.
- Yoshigou, H. and T. Yoshino, 2002. First records of two blennioid fishes, *Enneapterygius rhabdotus* and *Blenniella interrupta* from Japan. *I.O.P. Diving News*, **13**(7): 2-4. (In Japanese with English abstract.)
- Yoshino, T. and S. Nishijima, 1981. A list of fishes found around Sesoko Island, Okinawa. *Sesoko Mar. Sci. Lab. Tech. Rep.*, (8): 19-87.
- Yoshino, T., S. Nishijima and S. Shinohara, 1975. Catalogue of fishes of the Ryukyu Islands. *Bull. Sci. Engineer. Div., Univ. Ryukyus, Math. Nat. Sci.*, (20): 61-118. (In Japanese with English summary.)
- Yunokawa, K., 1991. Ie-jima no umi. *I.O.P. Diving News*, **2**(4): 6. (In Japanese.)
- Yunokawa, K., 1992. Ie-jima no umi. *I.O.P. Diving News*, **3**(3): 6. (In Japanese.)
- Yunokawa, K., 1993. Ie-jima no umi. *I.O.P. Diving News*, **4**(5): 7. (In Japanese.)

摘要

Senou, H., H. Kodato, T. Nomura & K. Yunokawa, 2006. Coastal Fishes of Ie-jima Island, the Ryukyu Islands, Okinawa, Japan. *Bull. Kanagawa prefect. Mus. (Nat. Sci.)*, (35): 67-92. (瀬能 宏・古田土裕子・野村智之・湯野川 恭, 2006. 伊江島の沿岸魚類. 神奈川県立博物館研究報告(自然科学), (35): 67-92.)

琉球列島沖縄諸島伊江島(中ノ瀬を含む)の沿岸魚類について、既存の文献および神奈川県立生命の星・地球博物館に所蔵されている標本と画像に基づき目録化した。その結果、同島の魚類は20目84科889種に達することが判明した。これらの中には未記載もしくは日本新産と考えられる種が少なくとも18種含まれるが、本報告では図示することとどめ、標本資料の充実を待って別途報告する予定である。

(受付 2005 年 12 月 16 日 ; 受理 2006 年 1 月 18 日)