

TP-LINK®

User Guide

TD-8616 ADSL2+ Modem



Rev: 1.0.1
1910011519

COPYRIGHT & TRADEMARKS

Specifications are subject to change without notice. **TP-LINK®** is a registered trademark of TP-LINK TECHNOLOGIES CO., LTD. Other brands and product names are trademarks or registered trademarks of their respective holders.

No part of the specifications may be reproduced in any form or by any means or used to make any derivative such as translation, transformation, or adaptation without permission from TP-LINK TECHNOLOGIES CO., LTD. Copyright © 2013 TP-LINK TECHNOLOGIES CO., LTD. All rights reserved.

<http://www.tp-link.com>

FCC STATEMENT



This equipment has been tested and found to comply with the limits for a Class B digital device, pursuant to part 15 of the FCC Rules. These limits are designed to provide reasonable protection against harmful interference in a residential installation. This equipment generates, uses and can radiate radio frequency energy and, if not installed and used in accordance with the instructions, may cause harmful interference to radio communications. However, there is no guarantee that interference will not occur in a particular installation. If this equipment does cause harmful interference to radio or television reception, which can be determined by turning the equipment off and on, the user is encouraged to try to correct the interference by one or more of the following measures:

- Reorient or relocate the receiving antenna.
- Increase the separation between the equipment and receiver.
- Connect the equipment into an outlet on a circuit different from that to which the receiver is connected.
- Consult the dealer or an experienced radio/ TV technician for help.

This device complies with part 15 of the FCC Rules. Operation is subject to the following two conditions:

- 1) This device may not cause harmful interference.
- 2) This device must accept any interference received, including interference that may cause undesired operation.

Any changes or modifications not expressly approved by the party responsible for compliance could void the user's authority to operate the equipment.

CE Mark Warning



This is a class B product. In a domestic environment, this product may cause radio interference, in which case the user may be required to take adequate measures.



Продукт сертифіковано згідно с правилами системи УкрСЕПРО на відповідність вимогам нормативних документів та вимогам, що передбачені чинними законодавчими актами України.

Safety Information

- When product has power button, the power button is one of the way to shut off the product; when there is no power button, the only way to completely shut off power is to disconnect the product or the power adapter from the power source.
- Don't disassemble the product, or make repairs yourself. You run the risk of electric shock and voiding the limited warranty. If you need service, please contact us.
- Avoid water and wet locations.

This product can be used in the following countries:

AT	BG	BY	CA	CZ	DE	DK	EE
ES	FI	FR	GB	GR	HU	IE	IT
LT	LV	MT	NL	NO	PL	PT	RO
RU	SE	SK	TR	UA			

DECLARATION OF CONFORMITY

For the following equipment:

Product Description: ADSL2+ Modem

Model No.: TD-8616

Trademark: **TP-LINK**

We declare under our own responsibility that the above products satisfy all the technical regulations applicable to the product within the scope of Council Directives:

Directives 2004 / 108 / EC, Directives 2006 / 95 / EC, Directives 2011/65/EU

The above product is in conformity with the following standards or other normative documents

EN 55022:2010

EN 55024:2010

EN 61000-3-2:2006+A1:2009+A2:2009

EN 61000-3-3:2008

EN 60950-1:2006+A11 : 2009+A1:2010+A12:2011

The product carries the CE Mark



Person responsible for marking this declaration:

A handwritten signature in black ink, appearing to read 'Yang Hongliang', is written over a light gray rectangular background.

Yang Hongliang
Product Manager of International Business

Date of issue: 2013

CONTENTS

Package Contents	1
Chapter 1. Introduction	2
1.1 Product Overview	2
1.2 Main Features	2
1.3 Conventions	2
Chapter 2. Hardware Installation	3
2.1 The Front Panel.....	3
2.2 The Back Panel	4
2.3 Installation Environment	4
2.4 Connecting the Modem.....	5
Chapter 3. Quick Installation Guide	7
3.1 Configuring the PC	7
3.2 Login	11
Chapter 4. Software Configuration	13
4.1 Statistics.....	13
4.1.1 Device Information	13
4.1.2 Traffic Statistics	14
4.2 Basic Setup	15
4.2.1 WAN Setting.....	15
4.2.2 LAN Setting	17
4.2.3 ADSL	18
4.3 Maintenance.....	18
4.3.1 Administrator	18
4.3.2 Firmware Upgrade.....	19
4.3.3 SysRestart.....	20
4.3.4 Diagnosis Test.....	20
Appendix A: Specifications	21
Appendix B: Troubleshooting	22
Appendix C: Technical Support	23

Package Contents

The following items should be found in your package:

- One TD-8616 ADSL2+ Modem
- One Power Adapter for TD-8616 ADSL2+ Modem
- Quick Installation Guide
- One RJ45 cable
- Two RJ11 cables
- One ADSL splitter
- One Resource CD , including:
 - This User Guide
 - Other Helpful Information

 **Note:**

Make sure that the package contains the above items. If any of the listed items are damaged or missing, please contact with your distributor.

Chapter 1. Introduction

Thank you for choosing the **TD-8616 ADSL2+ Modem** .

1.1 Product Overview

The device is designed to provide a simple and cost-effective ADSL Internet connection for a private Ethernet network.

The Modem is easy to use. Connect the TD-8616 to an Ethernet LAN or computers via standard Ethernet ports. The ADSL connection is made using ordinary telephone line with standard connectors. Multiple workstations can be networked and connected to the Internet using a single Wide Area Network (WAN) interface and single global IP address.

ADSL

The TD-8616 supports full-rate ADSL2+ connectivity conforming to the ITU (International Telecommunications Union) and ANSI (American National Standards Institute) specifications. In addition to the basic DMT physical layer functions, the ADSL2+ PHY supports dual latency ADSL2+ framing (fast and interleaved) and the I.432 ATM Physical Layer.

1.2 Main Features

- 1 10/100M RJ-45 LAN ports (Auto MDI/MDIX), one RJ11 port
- Downstream data rates up to 24Mbps, upstream data rates up to 3.5Mbps (With Annex M enabled) .
- Supports long transfers, the max line length can reach to 6.5Km.
- Quick response semi-conductive surge protection circuit, provides reliable ESD and surge-protect function.
- High speed and asymmetrical data transmit mode, provides safe and exclusive bandwidth.
- Supports All ADSL industrial standards.
- Compatible with all mainstream DSLAM (CO).
- Real-time Configuration and device monitoring.
- Supports Multiple PVC (Permanent Virtual Circuit).
- Supports firmware upgrade and Web-based management.

1.3 Conventions

The Modem or device mentioned in this User Guide stands for TD-8616 without any explanations. Besides we take procedures in Windows XP for an example to illustrate Chapter 3 Quick Installation Guide and Chapter 4 Software Configuration. Parameters provided in the pictures are just references for setting up the product, which may differ from the actual situation.

Chapter 2. Hardware Installation

2.1 The Front Panel

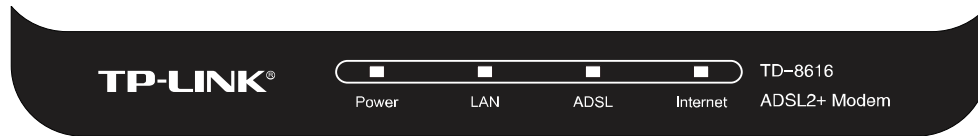


Figure 2-1

The LEDs locate on the front panel, which indicate the device's working status. For details, please refer to LED Explanation.

LED Explanation:

Name	Status	Indication
Power	On	The modem is powered on.
	Off	The modem is off. Please ensure that the power adapter is connected correctly.
LAN	On	There is a device connected to this LAN port.
	Flash	The modem is sending or receiving data over this LAN port.
	Off	There is no device connected to this LAN port.
ADSL	On	ADSL line is synchronized and ready to use.
	Flash	The ADSL negotiation is in progress.
	Off	ADSL synchronization fails. Please refer to Note 1 for troubleshooting.
Internet	On	The network is available with a successful Internet connection.
	Flash	There is data being transmitted or received via the Internet.
	Off	There is no successful Internet connection or the modem is operating in Bridge mode. Please refer to Note 2 for troubleshooting.

Note:

- 1) If the ADSL LED is off, please check your Internet connection first. Refer to [2.4 Connecting the Modem](#) for more information about how to make Internet connection correctly. If you have already made a right connection, please contact your ISP to make sure if your Internet service is available now.
- 2) If the Internet LED is off, please check your ADSL LED first. If your ADSL LED is also off, please refer to [Note 1](#). If your ADSL LED is GREEN ON, please check your Internet configuration. You may need to check this part of information with your ISP and make sure everything have been input correctly. Refer to [4.1.1 Device Information](#) and [4.2.1 WAN Setting](#) for more information.

2.2 The Back Panel

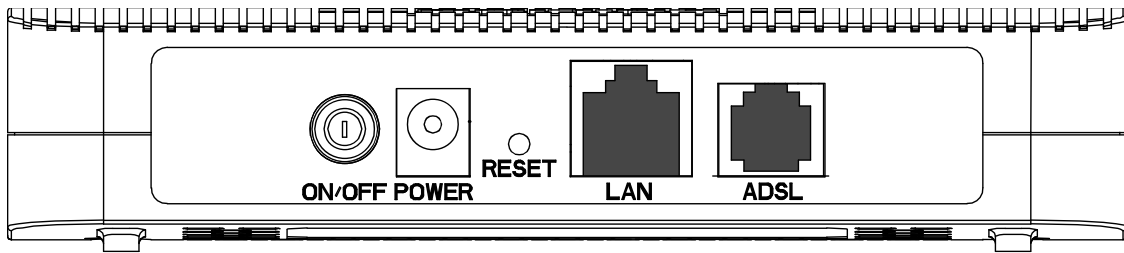


Figure 2-2

- **ON/OFF:** The switch for the power.
- **POWER:** The Power plug is where you will connect the power adapter.
- **RESET:** There are two ways to reset the Modem's factory defaults.
 - Method one:** With the Modem powered on, use a pin to press and hold the RESET button (about 5 seconds) until all LEDs are lit. And then release the button and wait for the Modem to reboot to its factory default settings.
 - Method two:** Restore the default setting from "Maintenance-SysRestart" of the Modem's Web-based Management page.
- **LAN:** Through the port, you can connect the Modem to your PC or the other Ethernet network devices.
- **ADSL:** Through the port, you can connect the Modem with the telephone.

 **Note:**

The RESET button can also be used to restart the Modem by holding the button for about 2-3 seconds.

2.3 Installation Environment

- The Product should not be located where it will be exposed to moisture or excessive heat.
- Place the Modem in a location where it can be connected to the various devices as well as to a power source.
- Make sure the cables and power cord are placed safely out of the way so they do not create a tripping hazard.
- The Modem can be placed on a shelf or desktop.
- Keep away from the strong electromagnetic radiation and the device of electromagnetic sensitive.

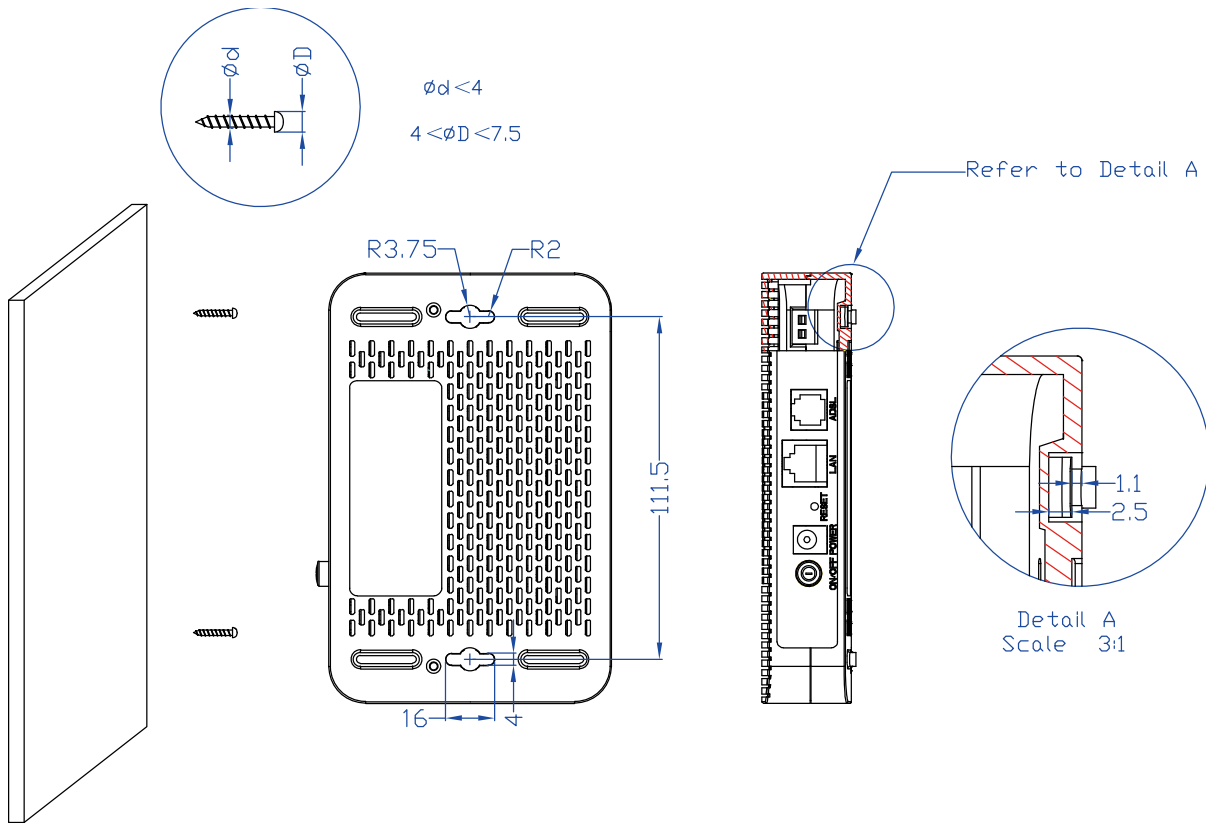


Figure 2-3 Wall-mount Install

Note:

The diameter of the screw, $4\text{mm} < D < 7.5\text{mm}$, and the distance of two screws is 111.5mm. The screw that project from the wall need around 4mm based, and the length of the screw need to be at least 20mm to withstand the weight of the product.

2.4 Connecting the Modem

Before installing the device, please make sure your broadband service provided by your ISP is available. If there is any problem, please contact your ISP. You need to connect the device to the phone jack, the power outlet, and your computer or network. Before cable connection, cut off the power supply and keep your hands dry. You can follow the steps below to install it.

Step 1: Connect the ADSL Line.

Method one: Plug one end of the twisted-pair ADSL cable into the ADSL port on the rear panel of TD-8616, and insert the other end into the wall socket.

Method two: You can use a separate splitter. External splitter can divide the data and voice, and then you can access the Internet and make calls at the same time. The external splitter has three ports:

- LINE: Connect to the wall jack
- PHONE: Connect to the phone sets
- MODEM: Connect to the ADSL port of TD-8616

Plug one end of the twisted-pair ADSL cable into the ADSL port on the rear panel of

TD-8616. Connect the other end to the MODEM port of the external splitter.

Step 2: Connect the Ethernet cable. Attach one end of a network cable to your computer's Ethernet port or a regular hub/switch port, and the other end to the LAN port on the TD-8616.

Step 3: Attach the power adapter. Connect the power adapter to the POWER connector on the rear of the device and plug in the adapter to a wall outlet or power extension.

Step 4: Turn on the TD-8616 and power on the computers and LAN devices.

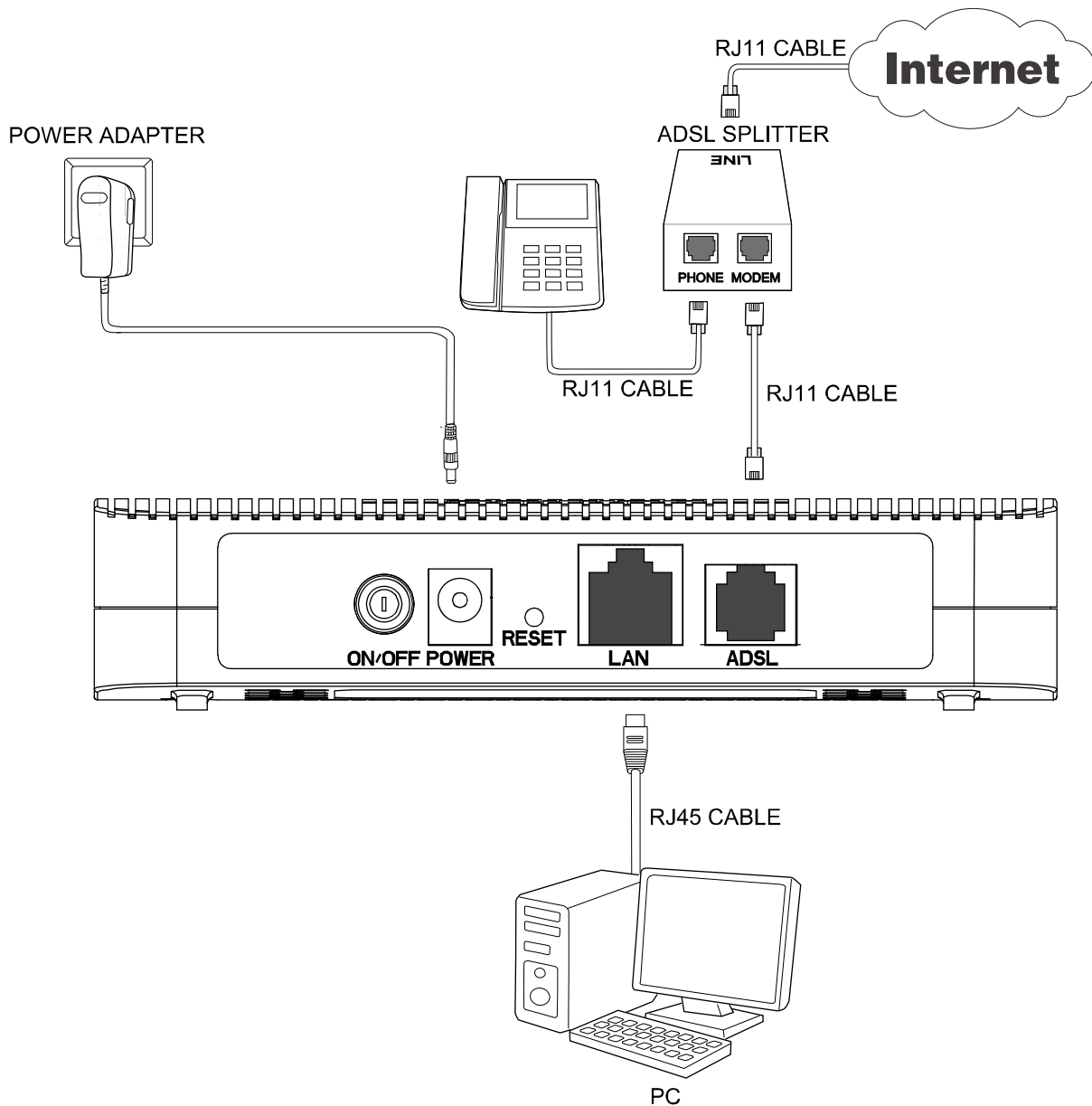


Figure 2-4

Chapter 3. Quick Installation Guide

3.1 Configuring the PC

After you directly connect your PC to the TD-8616 or connect your adapter to a Hub/Switch which has connected to the Modem, you need to configure your PC's IP address. Follow the steps below to configure it.

Step 1: Click the **Start** menu on your desktop, right click **My Network Places**, and then select **Properties** (shown in Figure 3-1).

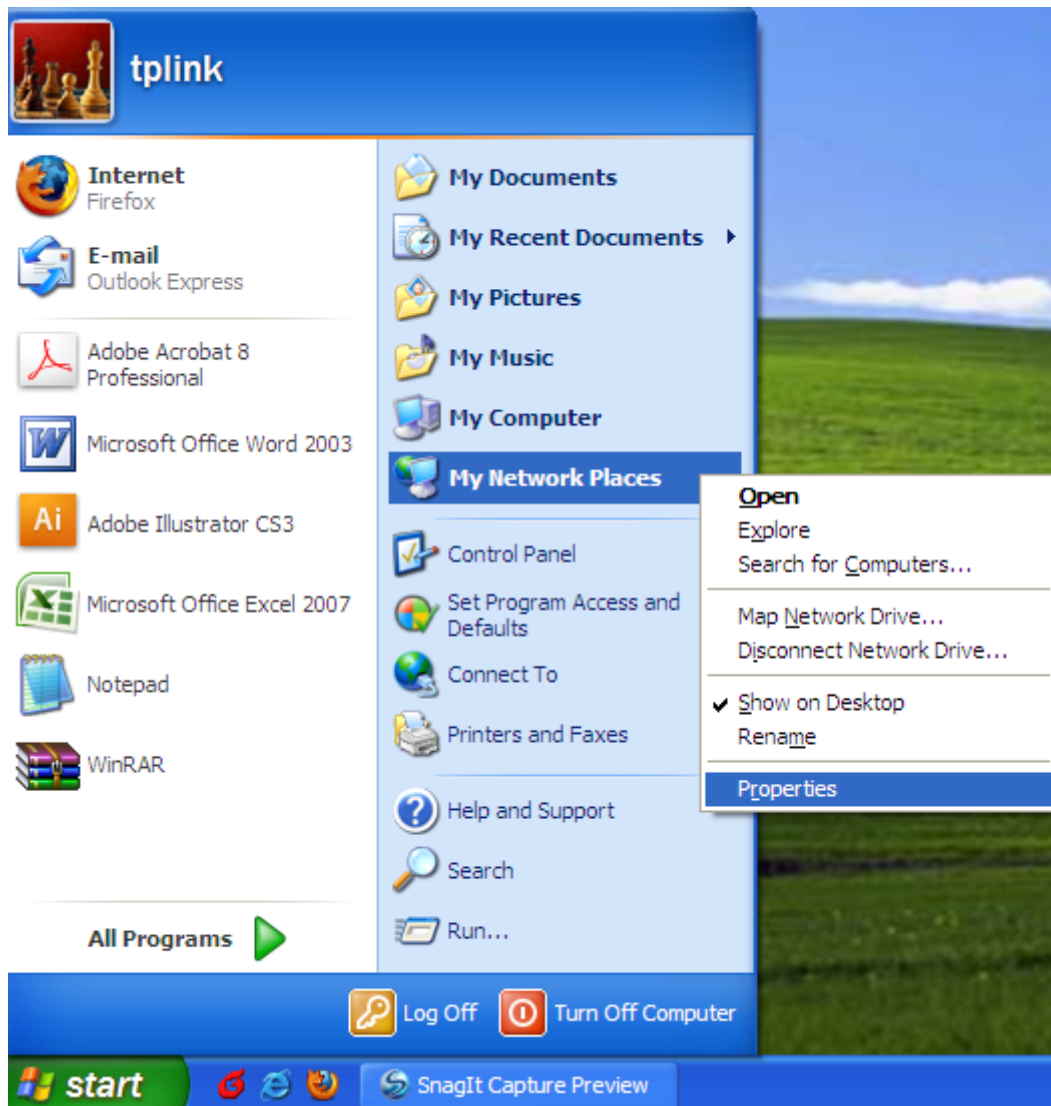


Figure 3-1

Step 2: Right click **Local Area Connection (LAN)**, and then select **Properties**.

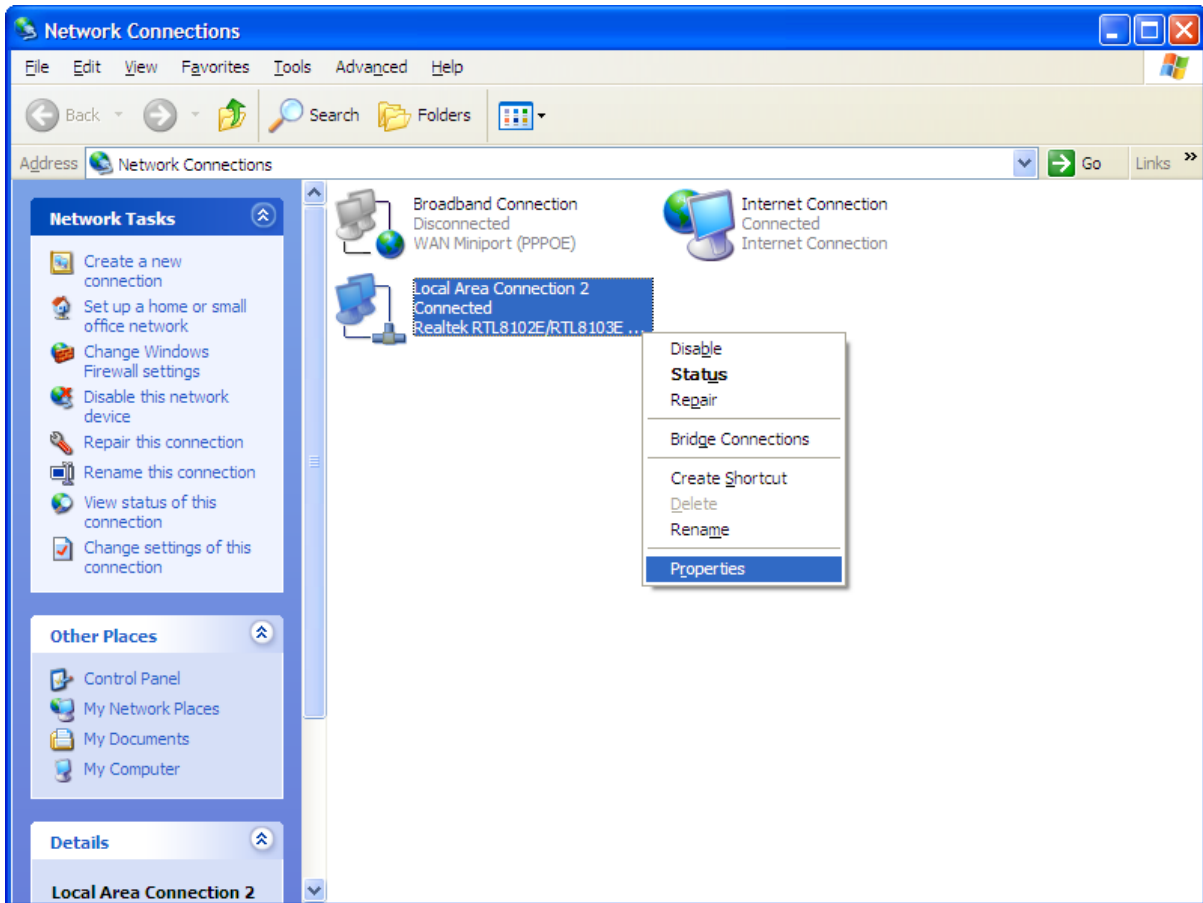


Figure 3-2

Step 3: Select **General** tab, highlight Internet Protocol (TCP/IP), and then click the **Properties** button.

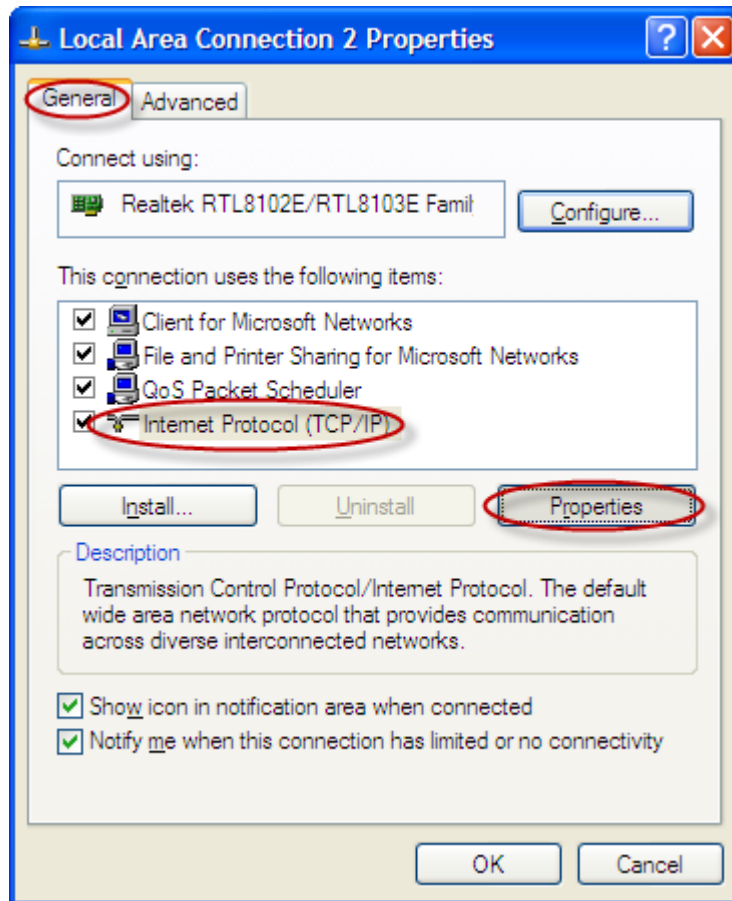


Figure 3-3

Step 4: Configure the IP address (Figure 3-4): Enter the IP address as 192.168.1.* (* is any value between 2 to 254, Subnet mask is 255.255.255.0). After that, click **OK**.

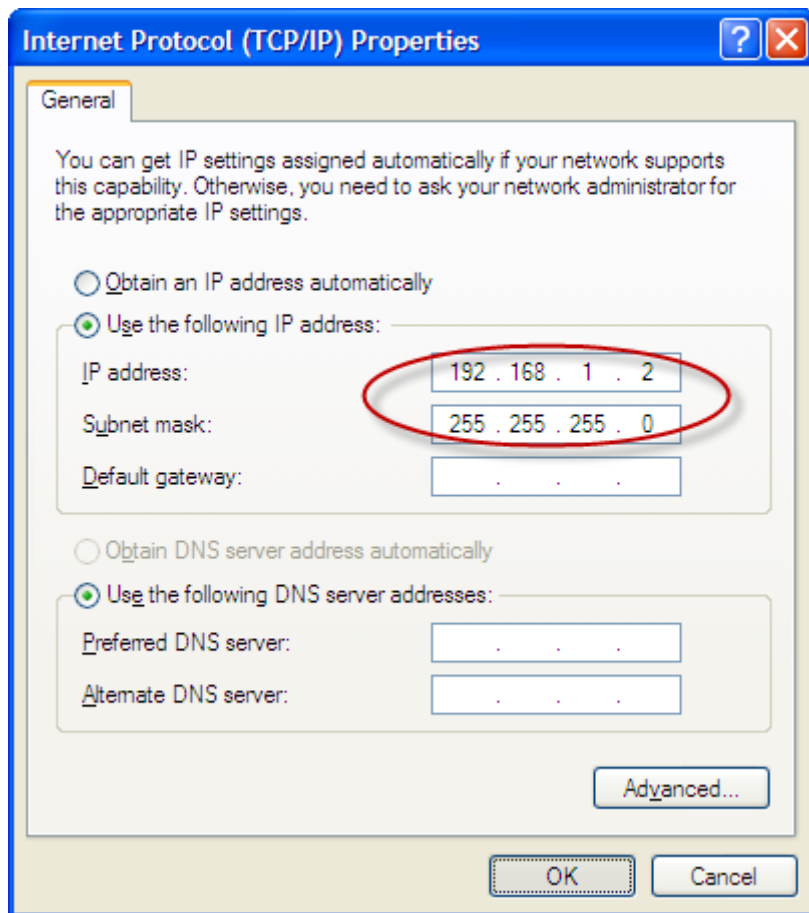


Figure 3-4

Note:

- 1) The users of Windows 98 can open **TCP/IP Properties** according to the following: Right-press (Mouse) **Network Neighbor** -> Choose **Properties** -> Double-press **TCP/IP. PCI Fast Ethernet Adapter**.
- 2) The words in fact maybe are different with this guide.

Now, you can run the Ping command in the command prompt to verify the network connection. Please click the **Start** menu on your desktop, select **run** tab, type **cmd** in the field and press **Enter**. To continue, please type *ping 192.168.1.1* on the following appeared command prompt screen and then press **Enter**.

If the result displayed is similar to the screen below, the connection between your PC and the Modem has been established.


```

Pinging 192.168.1.1 with 32 bytes of data:

Reply from 192.168.1.1: bytes=32 time<1ms TTL=64
Reply from 192.168.1.1: bytes=32 time<1ms TTL=64
Reply from 192.168.1.1: bytes=32 time<1ms TTL=64
Reply from 192.168.1.1: bytes=32 time<1ms TTL=64

Ping statistics for 192.168.1.1:
    Packets: Sent = 4, Received = 4, Lost = 0 (0% loss),
    Approximate round trip times in milli-seconds:
        Minimum = 0ms, Maximum = 0ms, Average = 0ms

```

Figure 3-5

If the result displayed is similar to the screen shown below, it means that your PC has not connected to the Modem.

```

Pinging 192.168.1.1 with 32 bytes of data:

Request timed out.
Request timed out.
Request timed out.
Request timed out.

Ping statistics for 192.168.1.1:
    Packets: Sent = 4, Received = 0, Lost = 4 (100% loss),

```

Figure 3-6

You can check it following the steps below:

1) Is the connection between your PC and the Modem correct?

The LEDs of LAN port which you link to the device and the LEDs on your PC's adapter should be lit.

2) Is the TCP/IP configuration for your PC correct?

If the Modem's IP address is 192.168.1.1, your PC's IP address must be within the range of 192.168.1.2 ~ 192.168.1.254.

3.2 Login

Once your host PC is properly configured, please proceed as follows to use the Web-based Management page: Start your web browser and type the private IP address of the Modem in the URL field: **192.168.1.1**.

Address

After that, you will see the screen shown below, enter the default User Name **admin** and the default Password **admin**, and then click **OK**.

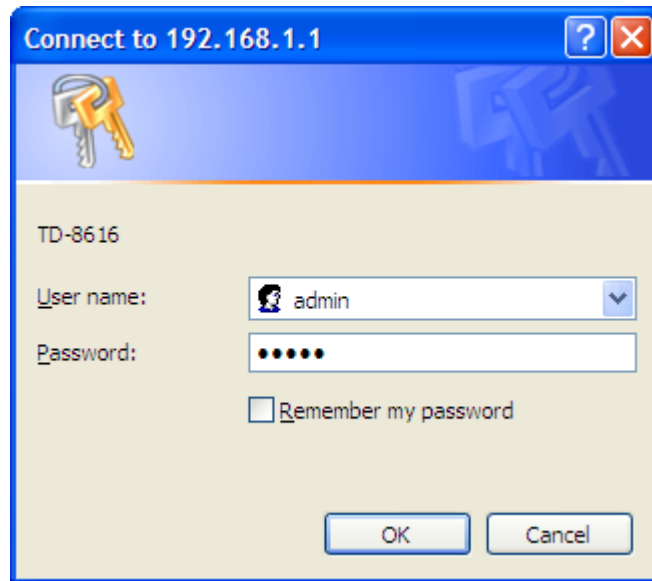


Figure 3-7

After that you will see the page as follow when ADSL connection is OK.

TP-LINK® ADSL2+ Modem

Statistics Basic Setup Maintenance **Statistics**

Device Information Traffic Statistics

Device Information

Firmware Version : 8.0.0 Build 130423 Rel.12962
 MAC Address : 00:25:86:88:88:88

LAN

IP Address : 192.168.1.1
 Subnet Mask : 255.255.255.0

WAN

Virtual Circuit : PVC0
 Status : Not Connected

ADSL

ADSL Firmware Version : FwVer:3.22.2.0_A60394 HwVer:T14.F7_12.0
 Line State : **Down**
 Modulation : N/A

	Downstream	Upstream	
SNR Margin :	N/A	N/A	db
Line Attenuation :	N/A	N/A	db
Data Rate :	N/A	N/A	kbps

Figure 3-8

Chapter 4. Software Configuration

This User Guide recommends using the “Quick Installation Guide” for first-time installation. For advanced users, if you want to know more about this device and make use of its functions adequately, maybe you will get help from this chapter to configure the advanced settings through the Web-based Management page.

After your successful login, you can configure and manage the device. There are main menus on the top of the Web-based Management page; submenus will be available after you click one of the main menus. On the center of the Web-based Management page, there are the detailed configurations or status information. To apply any settings you have altered on the page, please click the **SAVE** button.

4.1 Statistics

Choose “**Statistics**”, you can see the next submenus: **Device Information** and **Traffic Statistics**. Click any of them, and you will be able to configure the corresponding function.

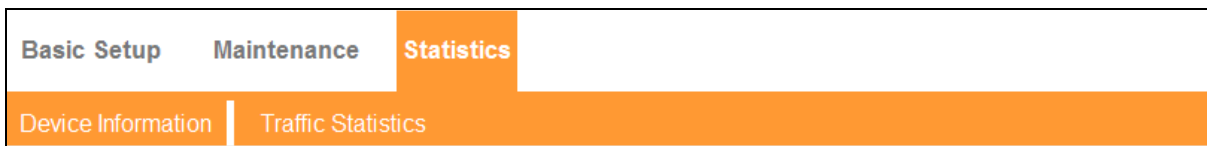


Figure 4-1

4.1.1 Device Information

Choose “**Statistics**→**Device Information**” menu, and you will be able to view the device information, including LAN, WAN and ADSL. The information will vary depending on the settings of the Modem configured on the Basic Setup screen.

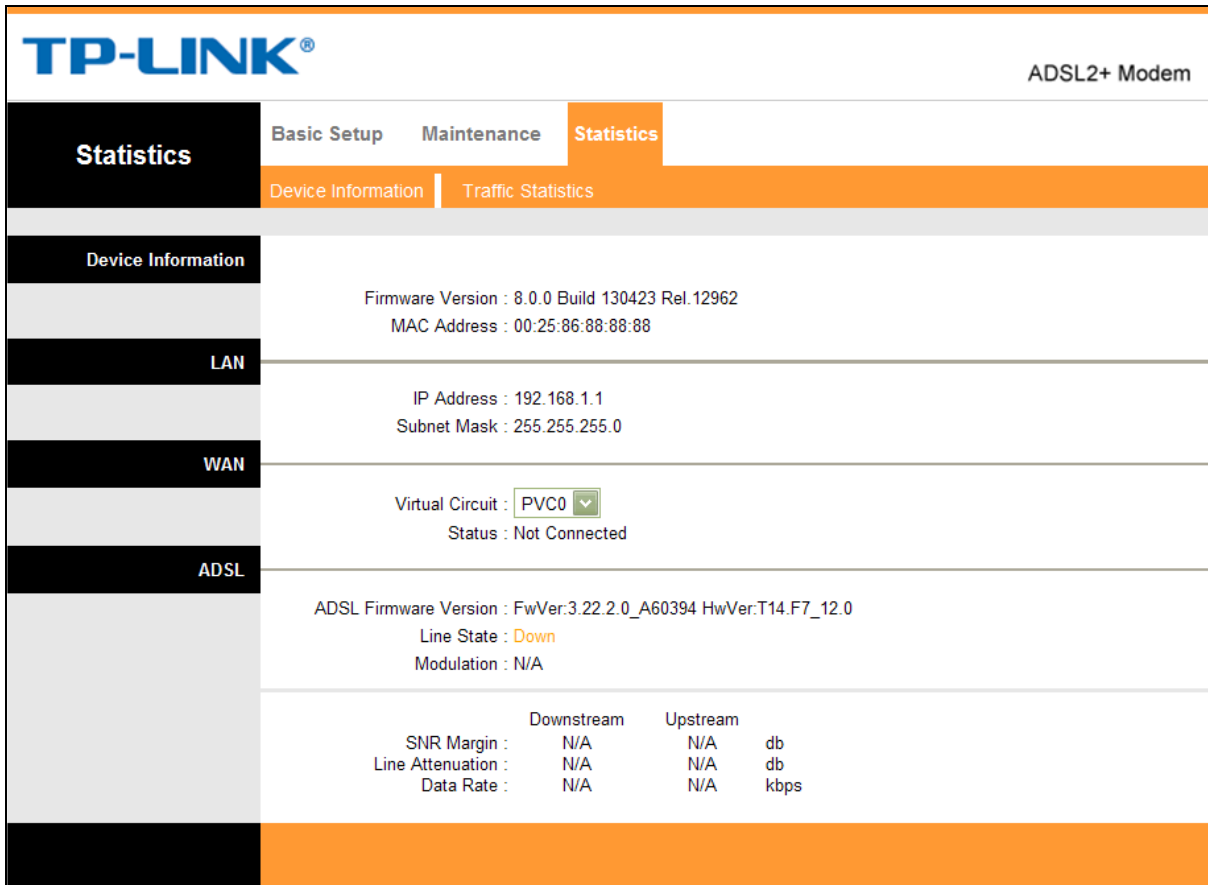


Figure 4-2

4.1.2 Traffic Statistics

Choose “**Statistics**→**Traffic Statistics**” menu, and you will be able to view the traffic statistics about the Modem.

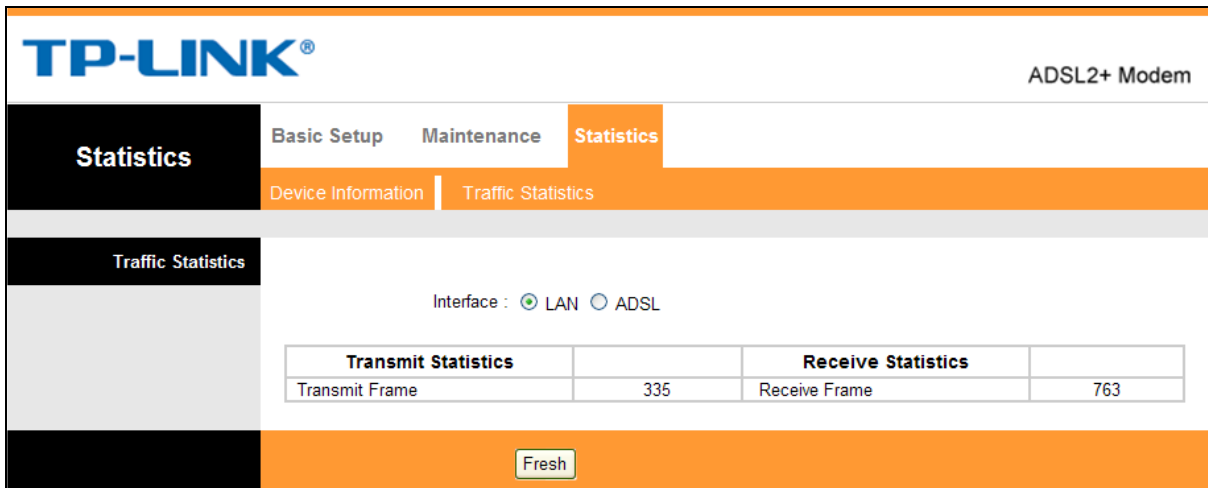


Figure 4-3

4.2 Basic Setup

Choose “**Basic Setup**”, you can see the next submenus: **WAN Setting**, **LAN Setting** and **ADSL**. Click any of them, and you will be able to configure the corresponding function.

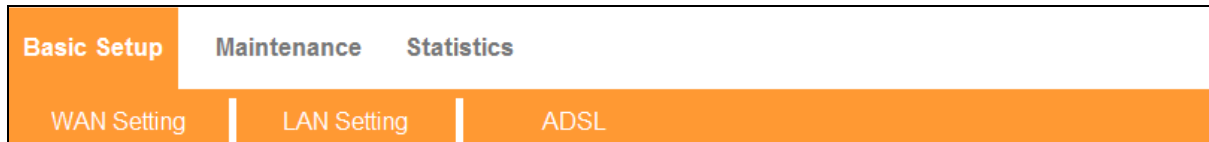


Figure 4-4

4.2.1 WAN Setting

Choose “**Basic Setup**→**WAN Setting**” menu, you can configure the parameters for WAN ports in the next screen (shown in Figure 4-5).

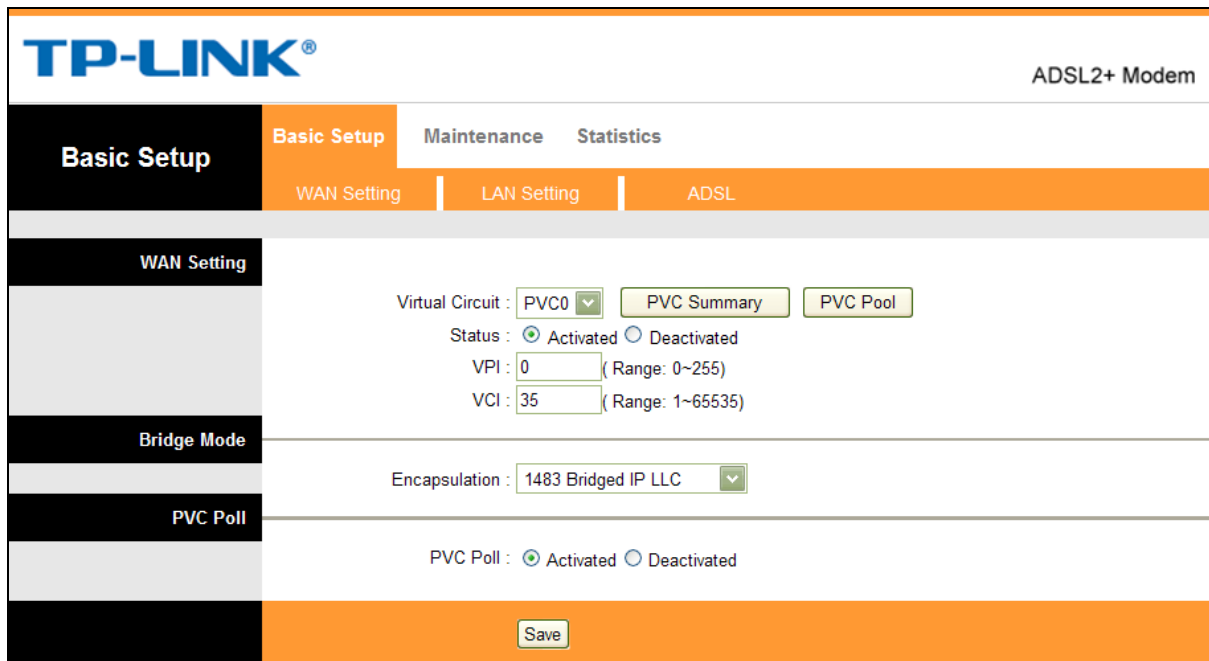



Figure 4-5

- **WAN Setting:** WAN settings are used to connect to your ISP. Your ISP provides VPI (Virtual Path Identifier) and VCI (Virtual Channel Identifier) settings to you. In this Device, you can totally set up 2 VC(Virtual Circuit)s on different encapsulations, if you apply 2 different virtual circuits from your ISP. You need to activate the VC to make it take effect.
 - **Virtual Circuit:** Select the VC number you want to setup, PVC0~PVC1.
 - **PVC Summary:** Click PVC (Permanent Virtual Circuit) Summary button and Figure 4-6 will display. Two items of VC information have been entered into the Modem to simplify your operation. You can use it directly without any configuration.




Service Information Summary

#	Active	VPI	VCI	Encap	Mux
PVC-0	Yes	0	35	1483 Bridged	LLC
PVC-1	Yes	8	35	1483 Bridged	LLC

Figure 4-6

- PVC Pool:** PVC Pool contains multiple VPI/VCI sets. The Modem can match PVC automatically and it can plug and play. The detailed VPI/VCI sets inside PVC Pool are shown in Figure 4-7, besides you can add VPI/VCI sets to or remove VPI/VCI sets from the PVC pool.



PVC Pool Configuration

The modem can match PVC automatically. There are multiple VPI/VCI sets inside. No need to be configured and can "plug and play".

Have Supported VPI/VCIs:
 0/35 8/35 8/35 0/35 0/100 8/81 0/32 8/32 0/80 0/67 0/40 0/200 1/33 8/88 0/33 0/30 0/31 0/38 0/41 1/31 1/32 1/35 1/81 8/33 8/38 8/41 14/24 0/39 8/40

Add: VPI(Range 0-255): VCI(Range 1-65535):

Remove: VPI(Range 0-255): VCI(Range 1-65535):

Note: If unnecessary, please don't modify PVC values. If modify them wrongly, it may cause the modem work abnormally.

Figure 4-7

- Status:** If you want to use a designed VC, you should activate it.
 - VPI:** Identify the virtual path between endpoints in an ATM network. The valid range is from 0 to 255. Please input the value provided by your ISP.
 - VCI:** Identify the virtual channel endpoints in an ATM network. The valid range is from 32 to 65535 (1 to 31 is reserved for well-known protocols). Please input the value provided by your ISP.
- **Bridge Mode:**
- Encapsulation:** There are two connection types: 1483 Bridged IP LLC and 1483 Bridged IP VC-Mux. Please choose the appropriate type which your ISP provides.

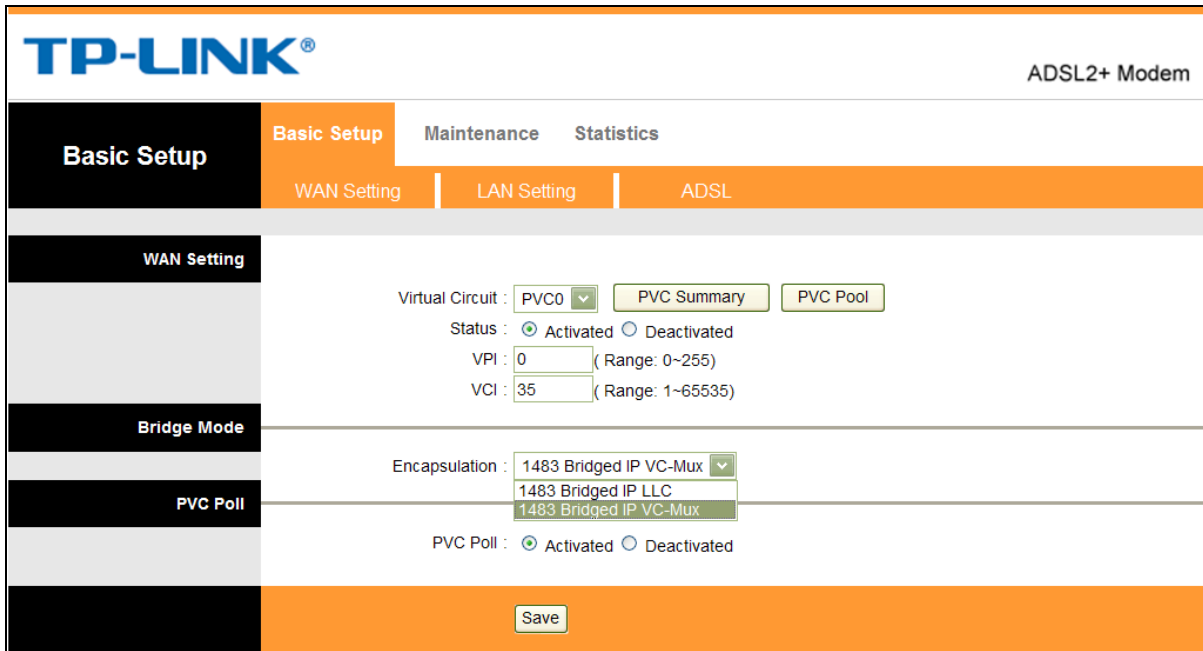


Figure 4-8

➤ **PVC Poll:**

- **PVC Poll:** PVC Pool is activated as default. If unnecessary, please do not modify the status of PVC Pool.

4.2.2 LAN Setting

Choose “**Basic Setup**→**LAN Setting**” menu, and you will see the LAN screen (shown in Figure 4-9). Please configure the parameters for LAN ports according to the descriptions below.

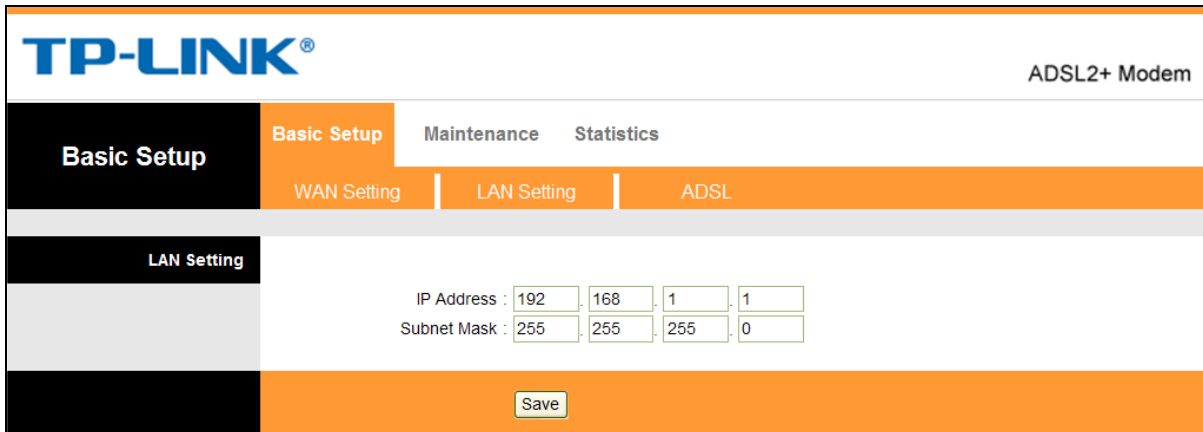


Figure 4-9

➤ **LAN Setting:** These are the IP settings of the LAN interface for the device. These settings may be referred to as Private settings. You may change the LAN IP address if needed. The LAN IP address is private to your internal network and cannot be seen on the Internet.

- **IP Address:** Enter the Modem’s local IP Address, then you can access to the Web-based Management page via the IP Address, the default value is 192.168.1.1.
- **Subnet Mask:** Enter the Modem’s Subnet Mask, the default value is 255.255.255.0.

4.2.3 ADSL

Choose “**Basic Setup**→**ADSL**”, you can select the ADSL Mode and the Annex Type in the next screen. You can change the ADSL features when meeting physical connection problem. Please check the proper settings with your ISP.

Figure 4-10

- **ADSL Mode:** Select the ADSL operation mode which your ADSL connection uses.
- **Annex Type:** Select the Annex type which your ADSL connection uses.

4.3 Maintenance

Choose “**Maintenance**”, you can see the next submenus: **Administrator**, **Firmware Upgrade**, **SysRestart** and **Diagnosis Test**. Click any of them, and you will be able to configure the corresponding function.

Figure 4-11

4.3.1 Administrator

Choose “**Maintenance**→**Administrator**”, you can set new password for admin in the screen (shown in Figure 4-12).

The screenshot shows the TP-LINK ADSL2+ Modem web interface. The top navigation bar includes 'Basic Setup', 'Maintenance', and 'Statistics'. The 'Maintenance' menu is expanded to show 'Administrator', 'Firmware Upgrade', 'SysRestart', and 'Diagnosis Test'. The 'Administrator' sub-menu is selected, displaying a form with the following fields:

- Username : admin
- New Password :
- Confirm Password :

At the bottom of the form are 'Save' and 'Cancel' buttons.

Figure 4-12


Note:

- 1) There is only one account that can access the Web-based Management page. The default account is "admin", and the password is "admin". Admin has read/write access privilege.
- 2) When you change the password, you should enter the new password twice, and then click **Save** to make the new password take effect.

4.3.2 Firmware Upgrade

Choose "**Maintenance**→**Firmware Upgrade**", you can upgrade the firmware of the Modem in the screen (shown in Figure 4-13). Make sure the firmware or romfile you want to use is on the local hard drive of the computer. Click **Browse** to find the local hard drive and locate the firmware or romfile to be used for upgrade.

The screenshot shows the TP-LINK ADSL2+ Modem web interface with the 'Firmware Upgrade' sub-menu selected. The current page displays the following information:

- Current Firmware Version : 8.0.0 Build 130423 Rel.12962
- New Firmware Location :
- Status :
 It might take several minutes, don't power off it during upgrading. Device will restart after the upgrade.

At the bottom of the form is an 'UPGRADE' button.

Figure 4-13

To upgrade the modem's firmware, follow the instructions below:

- Step 1:** Download a more recent firmware upgrade file from the TP-LINK website (www.tp-link.com).
- Step 2:** Type the path and file name of the firmware update file into the "New Firmware Location" field. Or click the **Browse** button to locate the firmware update file.
- Step 3:** Click the **UPGRADE** button.

Note:

- 1) New firmware versions are posted at www.tp-link.com and can be downloaded for free. If the modem is not experiencing difficulties, there is no need to download a more recent firmware version, unless the version has a new feature that you want to use.
- 2) When you upgrade the modem's firmware, you may lose its current configurations, so please back up the modem's current settings before you upgrade its firmware.
- 3) Do not turn off the modem or press the Reset button while the firmware is being upgraded.
- 4) The modem will reboot after the upgrading has been finished.

4.3.3 SysRestart

Choose "**Maintenance**→**SysRestart**", you can select to restart the device with current settings or restoring to its factory default settings in the screen (shown in Figure 4-14).

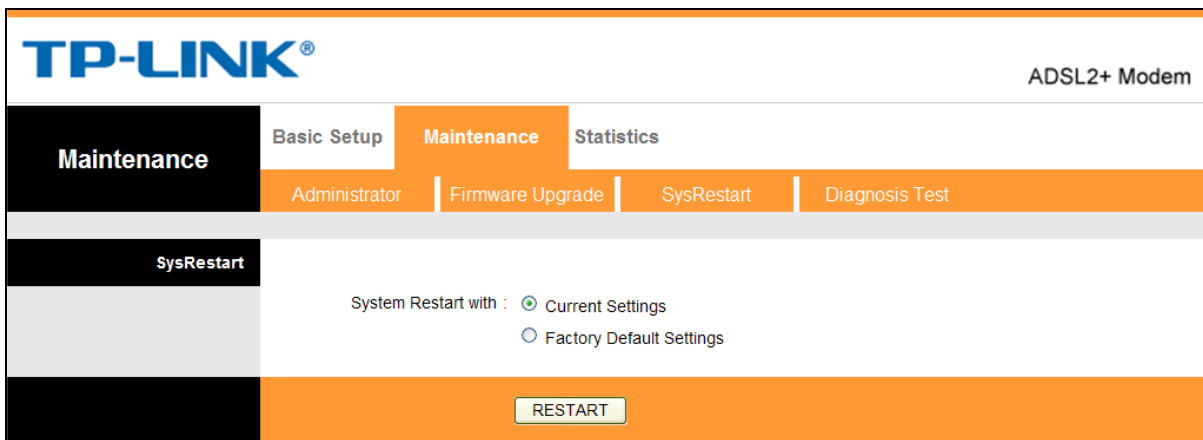


Figure 4-14

4.3.4 Diagnosis Test

Choose "**Maintenance**→**Diagnosis Test**", you can view the test results for the connectivity of the physical layer and protocol layer for both LAN and WAN sides in the screen (shown in Figure 4-15).

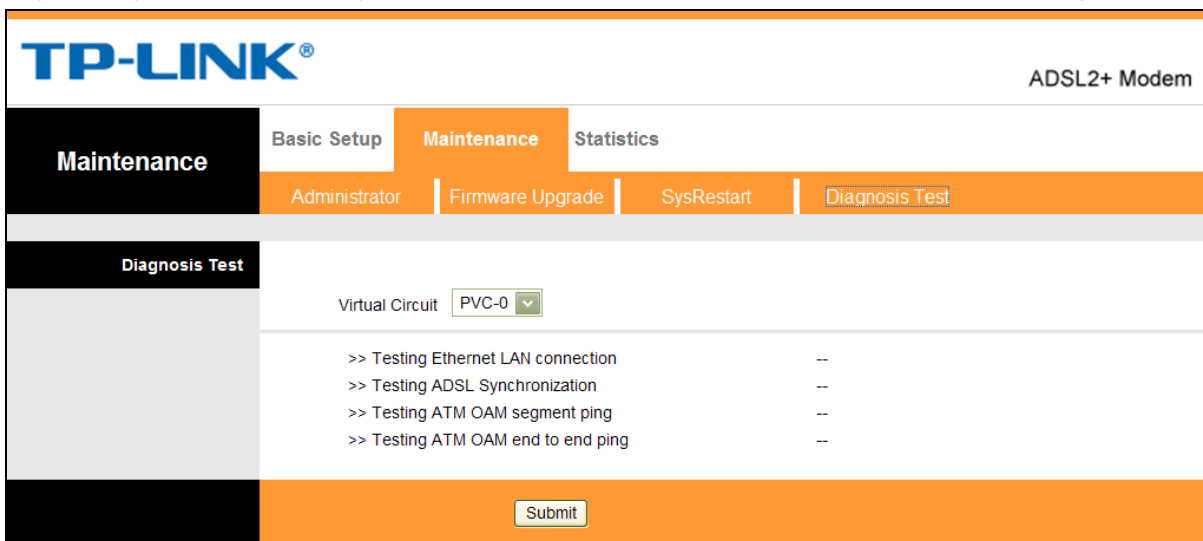


Figure 4-15

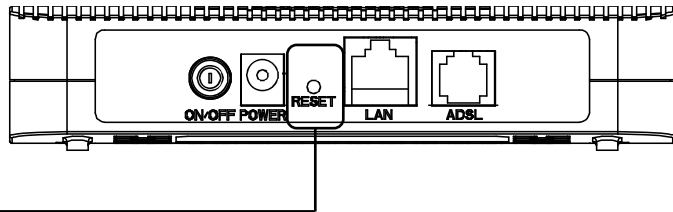
Appendix A: Specifications

General	
Standards and Protocols	ANSI T1.413, ITU G.992.1, ITU G.992.2, ITU G.992.3, G.992.4, ITU G.992.5, IEEE 802.3, IEEE 802.3u, TCP/IP, HTTP
Safety & Emission	FCC, CE
Ports	1 10/100M Auto-Negotiation RJ45 port (Auto MDI/MDIX) 1 RJ11 port
LEDs	Power, LAN, ADSL, Internet
Network Medium	10Base-T: UTP category 3, 4, 5 cable 100Base-TX: UTP category-5 Max line length: 6.5Km
Data Rates	Downstream: Up to 24Mbps Upstream: Up to 3.5Mbps (With Annex M enabled)
System Requirement	Internet Explorer 5.0 or later, Netscape Navigator 6.0 or later Win 9x/ME/2000/XP/Vista
Physical and Environment	
Working Temperature	0°C ~ 40°C
Working Humidity	10% ~ 90% RH (non-condensing)
Storage Temperature	-40°C ~ 70°C
Storage Humidity	5% ~ 90% RH (non-condensing)

Appendix B: Troubleshooting

T1. How can I restore my Modem's configuration to its factory default settings?

With the Modem powered on, use a pin to press and hold the **RESET** button on the rear panel for 5 seconds before releasing it.



Hold it for 5 seconds

Note Once the Modem is reset, the current configuration settings will be lost and you will need to re-configure all the parameters.

T2. What can I do if I forget my password?

- 1) Restore the Modem's configuration to its factory default settings. If you don't know how to do that, please refer to section **T1**.
- 2) Use the default user name and password: **admin, admin**.
- 3) Try to configure your Modem once again by following the instructions in [Chapter 3.2 Login](#).

T3. What can I do if I cannot access the Internet?

- 1) Check your cables and make sure they are all plugged in securely, including the telephone line, Ethernet cables and power adapter.
- 2) Check to see if you can log on to the Web-based Management page of the Modem. If you can, try the following steps. If you cannot, please configure your computer's IP address referring to [Chapter 3 Quick Installation Guide](#) then try to see if you can log on to the Web-based Management page of the Modem.
- 3) Please enter the VPI, VCI values provided by your ISP referring to [Chapter 4.2.1 WAN Setting](#). If there are any mistakes, please correct the settings and try again.
- 4) If you still cannot access the Internet, please restore your Modem to its factory default settings and reconfigure your Modem following the instructions in [Chapter 3.2 Login](#).
- 5) Please feel free to contact our Technical Support if the problem still exists.

Appendix C: Technical Support

Technical Support

- For more troubleshooting help, go to:
<http://www.tp-link.com/en/support/faq>
- To download the latest Firmware, Driver, Utility and User Guide, go to:
<http://www.tp-link.com/en/support/download>
- For all other technical support, please contact us by using the following details:

Global

Tel: +86 755 2650 4400
 Fee: Depending on rate of different carriers, IDD.
 E-mail: support@tp-link.com
 Service time: 24hrs, 7 days a week

USA/Canada

Toll Free: +1 866 225 8139
 E-mail: support.usa@tp-link.com(USA)
support.ca@tp-link.com(Canada)
 Service time: 24hrs, 7 days a week

Turkey

Tel: 0850 7244 488 (Turkish Service)
 Fee: Depending on rate of different carriers.
 E-mail: support.tr@tp-link.com
 Service time: 09:00 to 21:00, 7 days a week

Ukraine

Tel: 0800 505 508
 Fee: Free for Landline; Mobile: Depending on rate of different carriers
 E-mail: support.ua@tp-link.com
 Service time: Monday to Friday, 10:00 to 22:00

Brazil

Toll Free: 0800 608 9799 (Portuguese Service)
 E-mail: suporte.br@tp-link.com
 Service time: Monday to Friday, 09:00 to 20:00;
 Saturday, 09:00 to 15:00

Indonesia

Tel: (+62) 021 6386 1936
 Fee: Depending on rate of different carriers.
 E-mail: support.id@tp-link.com
 Service time: Sunday to Friday, 09:00 to 12:00;
 13:00 to 18:00 *Except public holidays

Australia/New Zealand

Tel: NZ 0800 87 5465 (Toll Free)
 AU 1300 87 5465 (Depending on 1300 policy.)
 E-mail: support.au@tp-link.com (Australia)
support.nz@tp-link.com (New Zealand)
 Service time: 24hrs, 7 days a week

Germany/Austria

Tel: +49 1805 875 465 (German Service)
 +49 1805 TPLINK
 +43 820 820 360
 Fee: Landline from Germany: 0.14EUR/min.
 Landline from Austria: 0.20EUR/min.
 E-mail: support.de@tp-link.com
 Service time: Monday to Friday, 09:00 to 12:30
 and 13:30 to 18:00. GMT+1 or GMT+2 (DST in Germany)
 *Except bank holidays in Hesse

Singapore

Tel: +65 6284 0493
 Fee: Depending on rate of different carriers.
 E-mail: support.sg@tp-link.com
 Service time: 24hrs, 7 days a week

UK

Tel: +44 (0) 845 147 0017
 Fee: Landline: 1p-10.5p/min, depending on the time of day. Mobile: 15p-40p/min, depending on your mobile network.
 E-mail: support.uk@tp-link.com
 Service time: 24hrs, 7 days a week

Italy

Tel: +39 023 051 9020
 Fee: Depending on rate of different carriers.
 E-mail: support.it@tp-link.com
 Service time: Monday to Friday, 09:00 to 13:00;
 14:00 to 18:00

Malaysia

Toll Free: 1300 88 875 465
 Email: support.my@tp-link.com
 Service time: 24hrs, 7 days a week

Poland

Tel: +48 (0) 801 080 618
 +48 223 606 363 (if calls from mobile phone)
 Fee: Depending on rate of different carriers.
 E-mail: support.pl@tp-link.com
 Service time: Monday to Friday, 09:00 to 17:00.
 GMT+1 or GMT+2 (DST)

France

Tel: 0820 800 860 (French service)
 Fee: 0.118 EUR/min from France
 Email: support.fr@tp-link.com
 Service time: Monday to Friday, 09:00 to 18:00
 *Except French Bank holidays

Switzerland

Tel: +41 (0) 848 800 998 (German Service)
 Fee: 4-8 Rp/min, depending on rate of different time.
 E-mail: support.ch@tp-link.com
 Service time: Monday to Friday, 09:00 to 12:30 and
 13:30 to 18:00. GMT+1 or GMT+2 (DST)

Russian Federation

Tel: 8 (499) 754 5560 (Moscow NO.)
 8 (800) 250 5560 (Toll-free within RF)
 E-mail: support.ru@tp-link.com
 Service time: From 10:00 to 18:00 (Moscow time)
 *Except weekends and holidays in RF