

Marine Inv

THE
RAY SOCIETY.

INSTITUTED MDCCCXLIV.



*This volume is issued to the Subscribers to the RAY SOCIETY for
the Year 1913.*

LONDON:

MCMXIII.



QL
444
C755Z
INVZ

THE
BRITISH
PARASITIC COPEPODA

BY
THOMAS SCOTT, LL.D., F.L.S.

AND
ANDREW SCOTT, A.L.S.

VOLUME II
COPEPODA PARASITIC ON FISHES
PLATES

LONDON
PRINTED FOR THE RAY SOCIETY

AND SOLD BY
DULAU & CO., LTD., 37, SOHO SQUARE, W.

1913

PRINTED BY ADLARD AND SON
LONDON AND DORKING



~~595.345~~

~~.S43~~

~~S.Mari.Inv.~~

THE AUTHORS

DESIRE, WITH THE MOST SINCERE RESPECT,

TO DEDICATE THIS WORK

TO THE

REV. CANON A. M. NORMAN, M.A.,

D.C.L., LL.D., F.R.S., F.L.S., ETC.,

IN GRATITUDE FOR HIS UNFAILING

KINDNESS AND ASSISTANCE

EXTENDED TO THEM FOR MANY YEARS.

NOTE BY THOMAS SCOTT.

All the figures, unless otherwise described, have been prepared by my son, Andrew Scott, from specimens examined by the authors.

The illustrations have all been engraved by André & Sleigh, Ltd., of Bushey, Watford.

•

LIST OF THE PLATES.

PLATE I.

- Fig. 1.—*Ergasilus nanus*
 „ 2.—*Bomolochus zeugopteri*
 „ 3.—*B. soleæ*
 „ 4.—*B. onosi*

PLATE II.

- Fig. 1-5.—*Ergasilus nanus*
 „ 6-9.—*Bomolochus soleæ*

PLATE III.

- Fig. 1-4.—*Bomolochus soleæ*
 „ 5-7.—*B. onosi*
 „ 8, 9.—*B. zeugopteri*

PLATE IV.

- Fig. 1, 2.—*Caligus minimus*
 „ 3-8.—*C. rapax*

PLATE V.

- Fig. 1-3.—*Caligus centrodoni*
 „ 4, 5.—*C. labracis*

PLATE VI.

- Fig. 1, 2.—*Caligus rapax*
 „ 3.—*C. brevicaudatus*
 „ 4, 5.—*Lepeophtheirus hippo-*
 glossi

PLATE VII.

- Fig. 1.—*Caligus zeii*
 „ 2, 3.—*C. pelamydis*

PLATE VIII.

- Fig. 1, 2.—*Caligus gurnardi*
 „ 3-9.—*C. zeii*
 „ 10, 11.—*C. brevicaudatus*

PLATE IX.

- Fig. 1-5.—*Caligus pelamydis*
 „ 6-9.—*Pseudocaligus brevi-*
 pedes

PLATE X.

- Fig. 1, 2.—*Pseudocaligus brevi-*
 pedes
 „ 3, 4.—*Lepeophtheirus pecto-*
 ralis

PLATE XI.

- Fig. 1-6.—*Sciænophilus tenuis*

PLATE XII.

- Fig. 1.—*Lepeophtheirus nord-*
 manni
 „ 2, 3.—*L. pectoralis*
 „ 4, 5.—*Demoleus paradoxus*

PLATE XIII.

- Fig. 1-4.—*Lepeophtheirus pecto-*
 ralis

PLATE XIV.

- Fig. 1-10.—*Lepeophtheirus pecto-*
 ralis

PLATE XV.

- Fig. 1-9.—*Lepeophtheirus pectoralis*

PLATE XVI.

- Fig. 1-3.—*Lepeophtheirus pectoralis*
 „ 4-11.—*L. nordmanni*

PLATE XVII.

- Fig. 1.—*Caligus diaphanus*
 „ 2.—*Lepeophtheirus hippoglossi*
 „ 3.—*L. thompsoni*
 „ 4.—*L. salmonis*
 „ 5, 6.—*L. pollachii*

PLATE XVIII.

- Fig. 1-3.—*Caligus centrodoni*
 „ 4, 5.—*C. labracis*
 „ 6, 7.—*C. diaphanus*
 „ 8-10.—*Lepeophtheirus hippoglossi*
 „ 11, 12.—*L. salmonis*
 „ 13-15.—*L. pollachii*
 „ 16-19.—*L. sturionis*

PLATE XIX.

- Fig. 1-9.—*Lütkenia asterodermi*
 „ 10.—*Elytrophora brachyptera*
 „ 11-18.—*Phyllothreus cornutus*

PLATE XX.

- Fig. 1-8.—*Nogaus ambiguus*
 „ 9.—*Chondracanthus annulatus*
 „ 10.—*C. merluccii*

PLATE XXI.

- Fig. 1.—*Lepeophtheirus sturionis*
 „ 2.—*Pandarus bicolor*
 „ 3, 4.—*Cecrops latreillii*
 „ 5.—*Orthagoriscicola muricata*

PLATE XXII.

- Fig. 1, 2.—*Trebius caudatus*
 „ 3.—*Dinemoura producta*
 „ 4.—*Echthrogaleus coleoptratus*
 „ 5, 6.—*Pandarus bicolor*

PLATE XXIII.

- Fig. 1, 2.—*Elytrophora brachyptera*
 „ 3.—*Phyllothreus cornutus*
 „ 4.—*Lütkenia asterodermi*
 „ 5, 6.—*Anthosoma crassum*

PLATE XXIV.

- Fig. 1, 2.—*Caligus curtus*
 „ 3, 4.—*Philorthagoriscus serratus*

PLATE XXV.

- Fig. 1-6.—*Thersitina gasterostei*
 „ 7-9.—*Caligus curtus*
 „ 10.—*Lepeophtheirus thompsoni*
 „ 11-16.—*Caligus minimus*

PLATE XXVI.

- Fig. 1-3.—*Dinemoura producta*
 „ 4-19.—*Pandarus bicolor*

PLATE XXVII.

- Fig. 1-8.—*Dinemoura producta*
 „ 9, 10.—*Cecrops latreillii*
 „ 11-24.—*Philorthagoriscus serratus*

PLATE XXVIII.

- Fig. 1-7.—*Cecrops latreillii*
 „ 8-18.—*Orthagoriscicola muricata*

PLATE XXIX.

- Fig. 1.—*Echthrogaleus lütkeni*
 „ 2-5.—*Lernanthropus kröyeri*

PLATE XXX.

- Fig. 1-8.—*Echthrogaleus lütkeni*
 „ 9-17.—*Lernanthropus kröyeri*

PLATE XXXI.

- Fig. 1-6.—*Elytrophora brachy-
 ptera*
 „ 7-18.—*Dichelestium oblongum*

PLATE XXXII.

- Fig. 1-11.—*Hatschekia mulli*

PLATE XXXIII.

- Fig. 1.—*Hatschekia cluthæ*
 „ 2.—*H. labracis*
 „ 3, 4.—*H. hippoglossi*
 „ 5.—*Thysanote impudica*
 „ 6.—? *Lernæopoda lampri*

PLATE XXXIV.

- Fig. 1-5.—*Hatschekia cluthæ*
 „ 6, 7.—*H. labracis*
 „ 8-11.—*H. hippoglossi*

PLATE XXXV.

- Fig. 1, 2.—*Hatschekia cornigera*
 „ 3-7.—*H. pygmæa*

PLATE XXXVI.

- Fig. 1-5.—*Hatschekia cornigera*
 „ 6-9.—*H. pygmæa*

PLATE XXXVII.

- Fig. 1.—*Eudactylina acuta*
 „ 2, 3.—*E. acanthii*
 „ 4, 5.—*E. similis*
 „ 6, 7.—*E. minuta*

PLATE XXXVIII.

- Fig. 1-5.—*Eudactylina acuta*
 „ 6-12.—*E. acanthii*

PLATE XXXIX.

- Fig. 1-17.—*Eudactylina similis*

PLATE XL.

- Fig. 1-9.—*Eudactylina minuta*

PLATE XLI.

- Fig. 1.—*Congericola pallida*
 „ 2-4.—*Chondracanthus de-
 pressus*
 „ 5.—*C. zeii*
 „ 6.—*C. ornatus*

PLATE XLII.

- Fig. 1-8.—*Lernæa branchialis*

PLATE XLIII.

- Fig. 1-7.—*Lernæa branchialis*

PLATE XLIV.

- Fig. 1, 2.—*Lernæa luscii*
 „ 3.—*L. minuta*
 „ 4.—*L. lumpi*
 „ 5-7.—*Hæmobaphes cyclo-
 pterina*
 „ 8.—*Hæmobaphoides am-
 biguus*

PLATE XLV.

- Fig. 1.—*Rebelula edwardsi*
 „ 2, 3.—*Philichthys xiphieæ*
 „ 4, 5.—*Dichelestium oblongum*
 „ 6.—*Tripaphylus musteli*
 „ 7.—*Chondracanthus orna-
 tus*
 „ 8.—*Brachiella rostrata*

PLATE XLVI.

- Fig. 1-5.—*Lernæenicus sprattæ*
 „ 6-9.—*L. encrasicola*

PLATE XLVII.

- Fig. 1, 2.—*Chondracanthus cor-
 nutus*
 „ 3.—*C. annulatus*

PLATE XLVII—continued.

- Fig. 4.—*Chondracanthus soleæ*
 „ 5.—*C. fluræ*
 „ 6.—*C. limandæ*
 „ 7.—*C. clavatus*
 „ 8.—*C. merluccii*

PLATE XLVIII.

- Fig. 1-3.—*Lepeophtheirus thompsoni*
 „ 4, 5.—*L. pollachii*
 „ 6.—*L. brevicaudatus*
 „ 7.—*Caligus diaphanus*
 „ 8-12.—*Lernæopoda salmonea*
 „ 13-16.—*Chondracanthus nodosus*
 „ 17.—*Ergasilus nanus*
 „ 18.—*Brachiella insidiosa*

PLATE XLIX.

- Fig. 1-7.—*Tripaphylus musteli*
 „ 8-11.—*Thysanote impudica*
 „ 12-16.—(?) *Lernæopoda lampri*

PLATE L.

- Fig. 1-5.—*Lerneocera cyprinacea*
 „ 6-8.—*Achtheres percarum*
 „ 9.—*Brachiella bispinosa*

PLATE LI.

- Fig. 1.—*Tripaphylus musteli*
 „ 2.—*Pennella orthagorisci*
 „ 3, 4.—*Sphyrion lumpi*
 „ 5.—*Rebelula edwardsi*
 „ 6.—*Thersitina gasterostei*
 „ 7.—*Clavella lophii*

PLATE LII.

- Fig. 1-3.—*Chondracanthus nodosus*
 „ 4.—*C. lophii*
 „ 5.—*C. cornutus*
 „ 6.—*Medesicaste asellinum*

PLATE LIII.

- Fig. 1-9.—*Chondracanthus cornutus*
 „ 10, 11.—*C. fluræ*
 „ 12-15.—*C. soleæ*
 „ 16-19.—*C. merluccii*

PLATE LIV.

- Fig. 1-11.—*Trebius caudatus*
 „ 12-17.—*Charopinus dalmanni*
 „ 18-22.—*C. ramosus*

PLATE LV.

- Fig. 1-4.—*Charopinus dalmanni*
 „ 5.—*C. dubius*
 „ 6, 7.—*C. ramosus*

PLATE LVI.

- Fig. 1-7.—*Chondracanthus depressus*
 „ 8-10.—*C. annulatus*
 „ 11, 12.—*C. limandæ*
 „ 13.—*C. zeii*
 „ 14, 15.—*C. clavatus*
 „ 16-18.—*C. lophii*

PLATE LVII.

- Fig. 1-7.—*Lernæopoda cluthæ*
 „ 8-12.—*L. bidiscalis*
 „ 13-17.—*L. elongata*
 „ 18, 19.—*Medesicaste asellinum*

PLATE LVIII.

- Fig. 1-8.—*Pandarus bicolor*
 „ 9-15.—*Lernæopoda galei*
 „ 16.—*L. cluthæ*

PLATE LIX.

- Fig. 1-6.—*Lernæopoda salmonea*
 „ 7, 8.—*Achtheres percarum*

PLATE LX.

- Fig. 1-3.—*Lernæopoda cluthæ*
 „ 4-6.—*L. galei*
 „ 7.—*Brachiella ovalis*

PLATE LXI.

- Fig. 1, 2.—*Lernæopoda bidiscalis*
 „ 3, 4.—*L. elongata*
 „ 5, 6.—*L. similis*

PLATE LXII.

- Fig. 1.—*Brachiella trigla*
 „ 2.—*B. insidiosa*
 „ 3.—*B. rostrata*
 „ 4, 5.—*B. merluccii*

PLATE LXIII.

- Fig. 1.—*Lernæopoda galei*
 „ 2-8.—*Brachiella rostrata*
 „ 9-16.—*B. insidiosa*
 „ 17-20.—*B. merluccii*
 „ 21-25.—*B. triglæ*
 „ 26-30.—*B. ovalis*

PLATE LXIV.

- Fig. 1-3.—*Achtheres percarum*
 „ 4-6.—*Brachiella thynni*
 „ 7.—*B. parkeri*
 „ 8.—*B. pastinaca*
 „ 9.—*B. bispinosa*

PLATE LXV.

- Fig. 1.—*Clavella brevicollis*
 „ 2, 3.—*C. uncinata*
 „ 4, 5.—*C. rugosa*
 „ 6.—*C. (?) uncinata*
 „ 7.—*C. dubia*
 „ 8, 9.—*C. stellata*

PLATE LXVI.

- Fig. 1-7.—*Clavella rugosa*
 „ 8-11.—*C. dubia*
 „ 12-16.—*C. brevicollis*
 „ 17-20.—*C. emarginata*
 „ 21-23.—*C. uncinata*

PLATE LXVII.

- Fig. 1-3.—*Clavella scombri*
 „ 4-6.—*C. paradoxa*

PLATE LXVIII.

- Fig. 1-7.—*Clavella scombri*
 „ 8-14.—*C. paradoxa*
 „ 15.—*C. quadrata*

PLATE LXIX.

- Fig. 1-3.—*Clavella canthari*
 „ 4-6.—*C. alata*
 „ 7.—*C. emarginata*

PLATE LXX.

- Fig. 1-13.—*Kroyeria lineata*

PLATE LXXI.

- Fig. 1-12.—*Eudactylina insolens*
 „ 13.—*Brachiella pastinaca*
 „ 14.—*Caligus pelamydis*

PLATE LXXII.

- Fig. 1-10.—*Argulus foliaceus*

REFERENCE LETTERS TO PLATES IV, XII-XV,
 XLII, AND XLIII.

a. antennules.
*a*¹. antennæ.
an. anus.
b. median frontal sucker.
c. filament duct.
cg. cement gland.
dg. digestive gland.
e. eyes.
f. filament.
g. ganglia.
i. intestine.
ls. lateral frontal sucker.
lns. lens.
m. mouth.
md. mandible.
mx. first maxilla.
*mx*¹. second maxilla.
maxp. first maxilliped.
*maxp*¹. second maxilliped.
n. nerves.

o. ovary.
od. oviduct.
oe. œsophagus.
os. ovisac.
*p*¹. first pair of feet.
p^{II}. second pair of feet.
p^{III}. third pair of feet.
p^{IV}. fourth pair of feet.
p^V. fifth pair of feet.
p^{VI}. sixth pair of feet.
rs. receptaculum seminis.
rt. rectum.
rtn. retina.
s. stomach.
sbg. sub-œsophageal ganglion.
spg. supra-œsophageal ganglion.
sp. spermatophore.
t. testis.
u. vulva.
vd. vas deferens.

Nos. 1-13, NERVES, AS FOLLOWS:—

1. optic.
 2. antennules.
 3. antennæ.
 4. mandibles.
 5. lateral frontal margins.
 6. first maxillæ.
 7. second maxillæ.
 8. lateral cephalic muscles.

9. first maxillipeds.
 10. second maxillipeds.
 11. first feet and stomach muscles.
 12. second feet and posterior cephalic muscles.
 13. third feet, fourth feet, fifth feet, genital segment, and abdomen.

Plate 1

PLATE I.

FIGS.

1. *Ergasilus nanus* P. J. van Beneden, ♀, dorsal view, × 51.
(p. 34.)
2. *Bomolochus zeugopteri* T. Scott, ♀, dorsal view, × 44.
(p. 40.)
3. *Bomolochus soleæ* Claus, ♀, dorsal view, × 24. (p. 36.)
4. *Bomolochus onosi* T. Scott, ♀, dorsal view, × 48. (p. 39.)

[Note.—At page 30, vol. I (text), after *Ergasilus nanus* read P. J. van Beneden instead of Claus.]

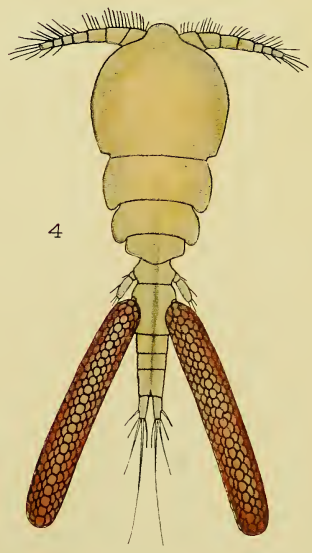
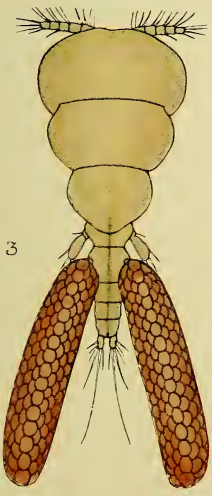
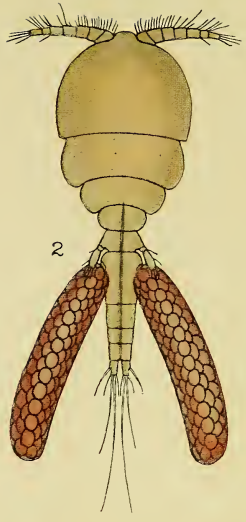
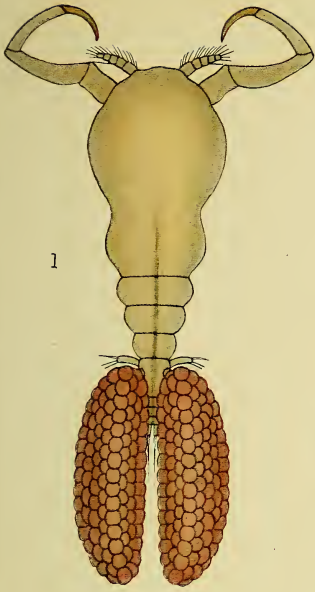




Plate 2

PLATE II.

FIGS.

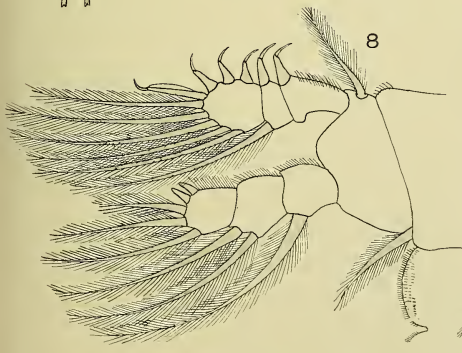
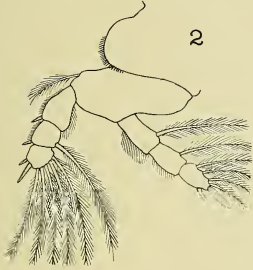
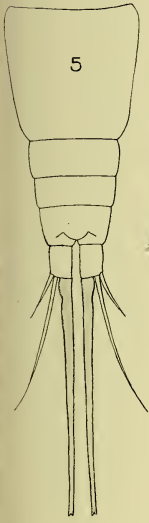
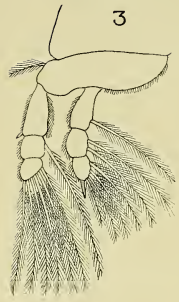
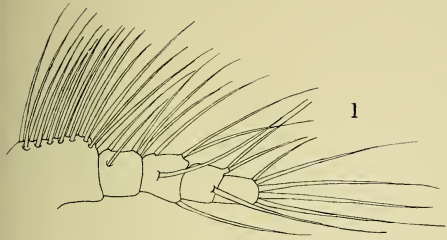
1-5. *Ergasilus nanus* P. J. van Beneden, ♀. (p. 34.)

1. Antennule.
2. Foot of first pair.
3. Foot of third pair.
4. Foot of fourth pair.
5. Abdomen.

6-9. *Bomolochus soleæ* Claus, ♀. (p. 36.)

6. Mandible.
7. First maxilliped.
8. Foot of second pair.
9. Foot of fourth pair.

(Figures much enlarged.)



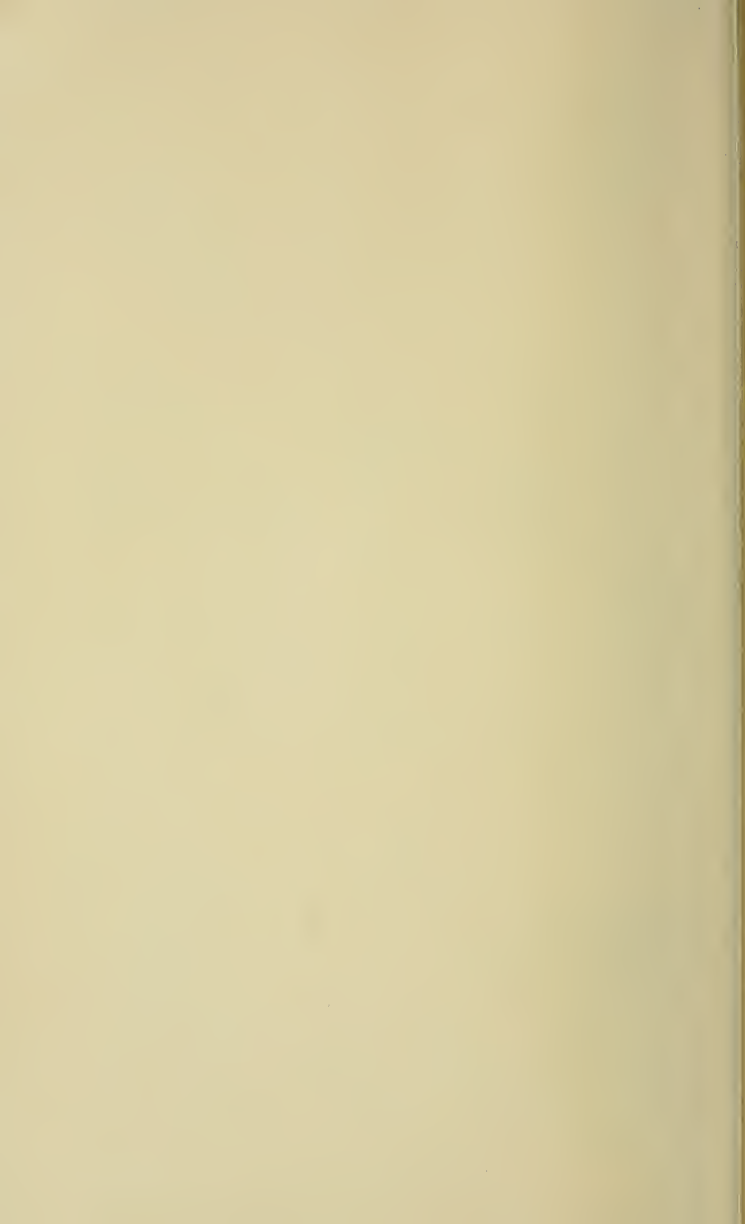


Plate 3

PLATE III.

FIGS.

- 1-4. *Bomolochus soleæ* Claus, ♀. (p. 36.)
1. Antennule.
2. Maxilla.
3. Second maxilliped.
4. Foot of first pair.
- 5-7. *Bomolochus onosi* T. Scott. (p. 39.)
5. Antennule, ♀.
6. Second maxilliped, ♀.
7. Second maxilliped, ♂.
- 8, 9. *Bomolochus zeugopteri* T. Scott, ♀. (p. 40.)
8. Antennule.
9. Second maxilliped.

(Figures much enlarged.)

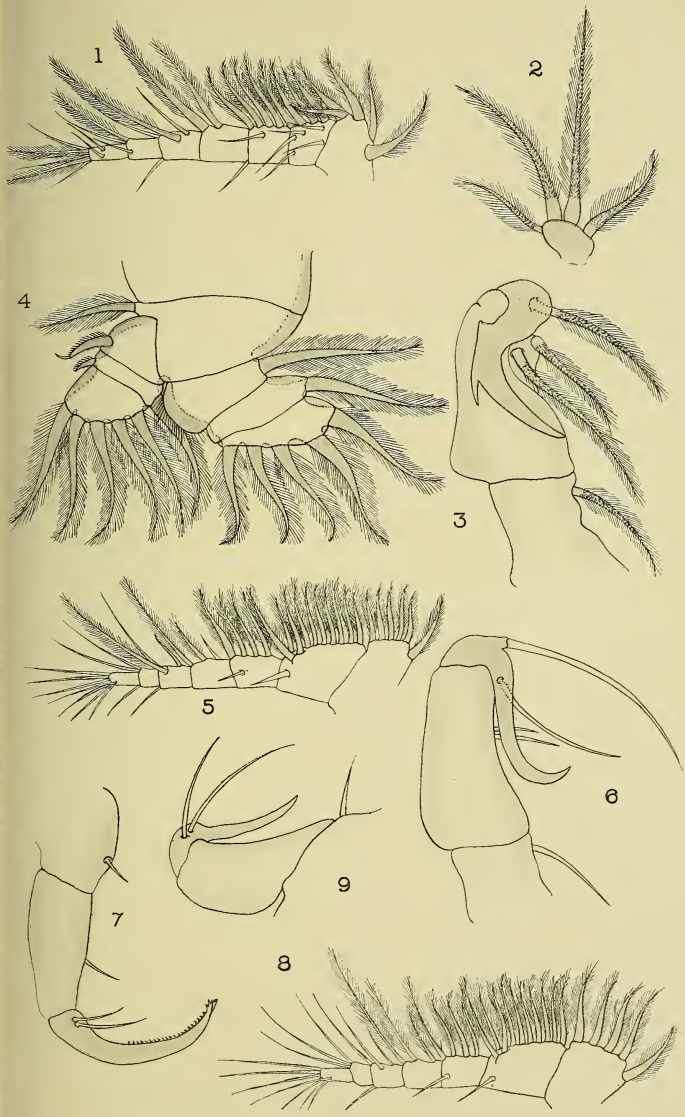


Plate 4

PLATE IV.

FIGS.

- 1, 2. *Caligus minimus* Otto. (p. 46.)
 1. Dorsal view, ♀, × 11.
 2. Dorsal view, ♂, × 11.
- 3-8. *Caligus rapax* M. Edwards. (p. 48.)
 3. Early "chalimus" stage attached to fin-ray of a young cod, × 54.
 4. Late "chalimus" stage attached to tail of a young lumpsucker, × 15.
 5. Mature part of a frontal plate, shewing lateral sucker (*lunula*).
 6. Sternal fork, ♀.
 7. Second maxilliped, ♀.
 8. Foot of fourth pair, ♀.

(Figures 5-8 much enlarged.)

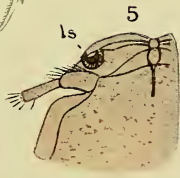
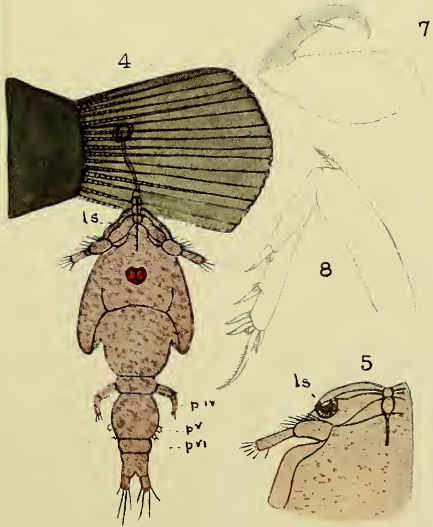
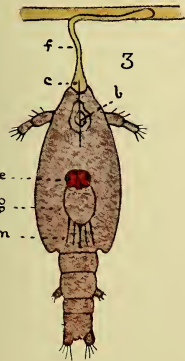
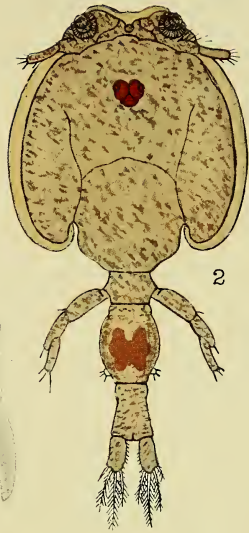
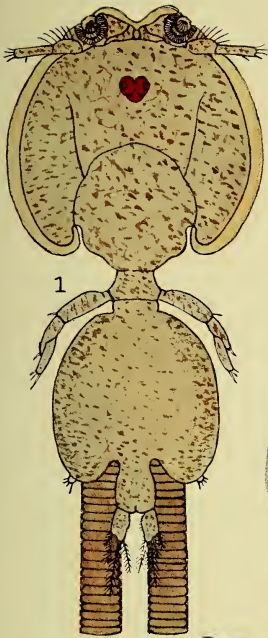


Plate 5

PLATE V.

FIGS.

- 1-3. *Caligus centrodoni* Baird. (p. 50.)
1. Dorsal view, ♀. (After C. B. Wilson.)
2. Dorsal view, ♂, × 16.
3. Dorsal view of a young individual, ♂, × 16.
- 4, 5. *Caligus labracis* T. Scott. (p. 53.)
4. Dorsal view, ♀, × 21.
5. Dorsal view, ♂, × 21.

PLATE V

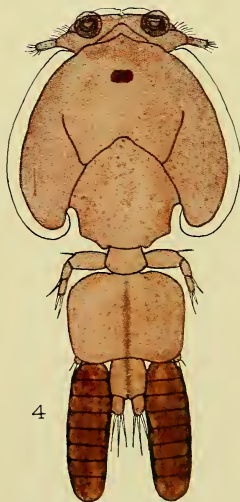
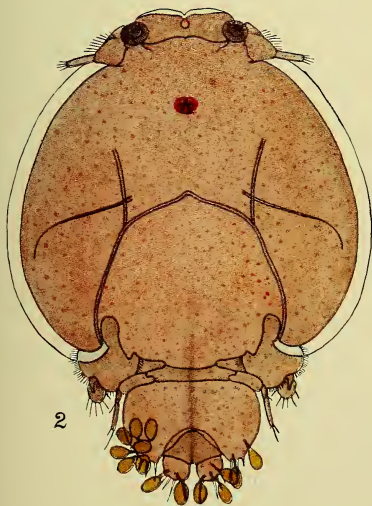
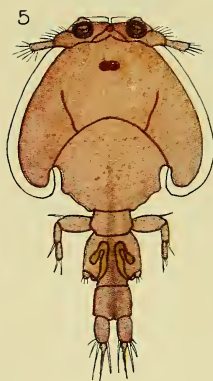
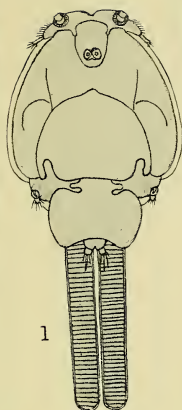
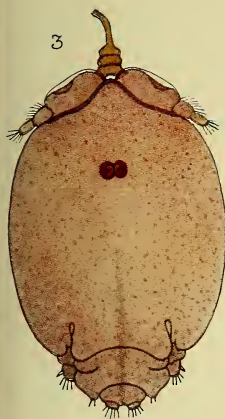
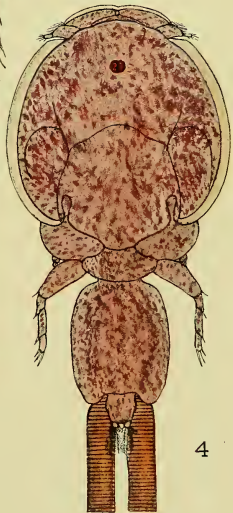
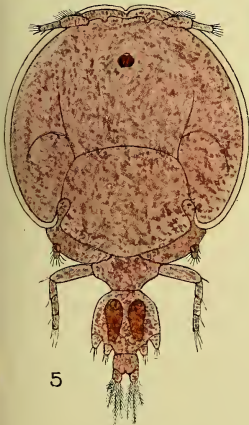


Plate 6

PLATE VI.

FIGS.

- 1, 2. *Caligus rapax* M. Edwards. (p. 48.)
 1. Dorsal view, ♀, × 13.
 2. Dorsal view, ♂, × 13.
3. *Caligus brevicaudatus* A. Scott. (p. 56.)
 3. Dorsal view, ♀, × 16.
- 4, 5. *Lepeophtheirus hippoglossi* (Kröyer). (p. 67.)
 4. Dorsal view, ♀, × 5.
 5. Dorsal view, ♂, × 7·5.



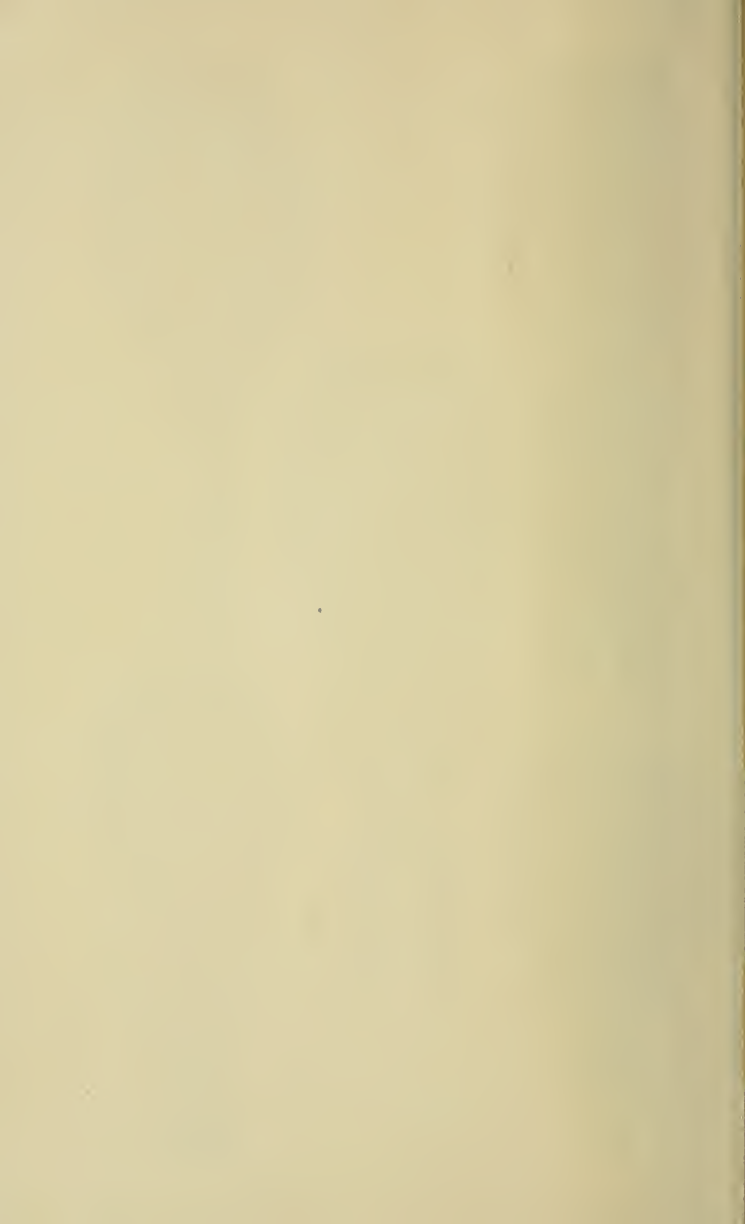


Plate 7

PLATE VII.

FIGS.

1. *Caligus zeii* Norman & T. Scott. (p. 54.)
 1. Dorsal view, ♀, × 11.
- 2, 3. *Caligus pelamydis* Kröyer. (p. 57.)
 2. Dorsal view, ♀, × 22·5
 3. Sternal fork, ♀ (enlarged).

PLATE VII

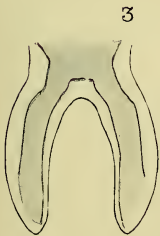
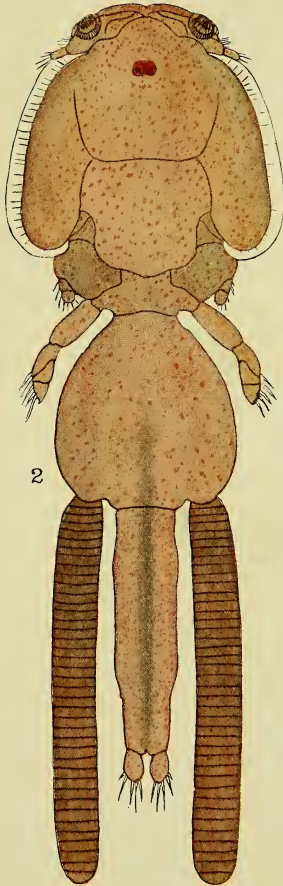
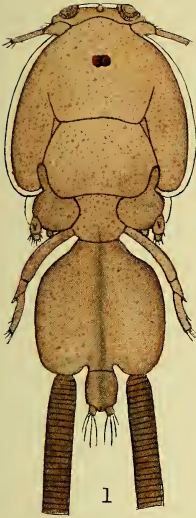


Plate 8

PLATE VIII.

FIGS.

- 1, 2. *Caligus gurnardi* Kröyer. (p. 52.)
1. Dorsal view, ♂, × 8. (After Kröyer.)
2. Dorsal view, ♀, × 8. (After Kröyer.)
3-9. *Caligus zeii* Norman & T. Scott, ♀. (p. 54.)
3. Antennule.
4. Antenna.
5. Sternal fork.
6. First maxilliped.
7. Second maxilliped.
8. Foot of fourth pair.
9. Urosome, ♂.
10, 11. *Caligus brevicaudatus* A. Scott, ♀. (p. 56.)
10. Second maxilliped, ♀.
11. Foot of fourth pair, ♀.

(Figures 3-11 much enlarged.)

PLATE VIII

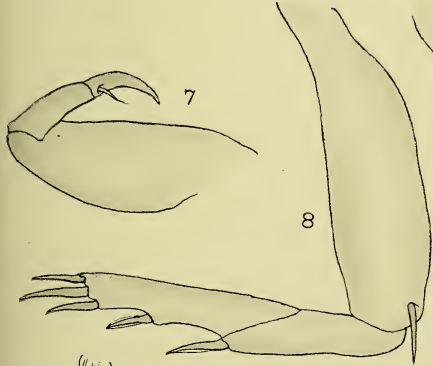
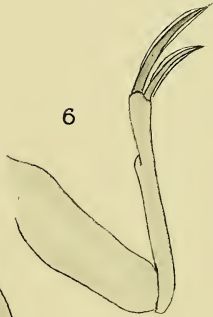
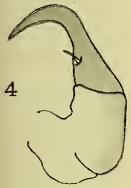
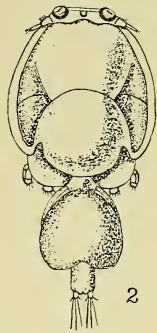
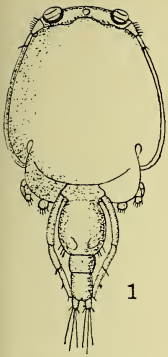


Plate 9

PLATE IX.

FIGS.

1-5. *Caligus pelamydis* Kröyer, ♀. (p. 57.)

1. Antennule.

2. Antenna.

3. First maxilliped.

4. Second maxilliped.

5. Foot of fourth pair.

6-9. *Pseudocaligus brevipedes* (Bassett-Smith). (p. 61.)

6. Sternal fork, ♀.

7. Sternal fork, ♂.

8. Second maxilliped, ♀.

9. Foot of fourth pair, ♀.

(Figures much enlarged.)

PLATE IX

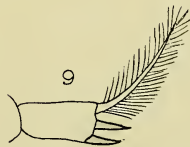
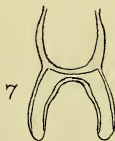
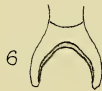
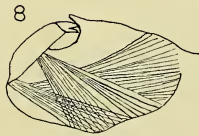
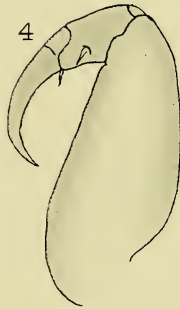
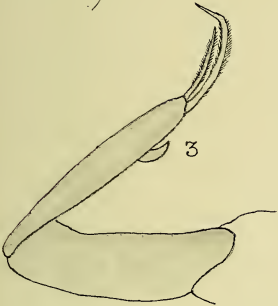
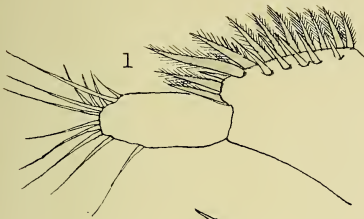


Plate 10

PLATE X.

FIGS.

- 1, 2. *Pseudocaligus brevipedes* (Bassett-Smith). (p. 61.)
1. Dorsal view, ♀, × 22.
2. Dorsal view, ♂, × 22.
- 3, 4. *Lepeophtheirus pectoralis* (O. F. Müller). (p. 64.)
3. Dorsal view, ♀, × 17.
4. Dorsal view, ♂, × 17.

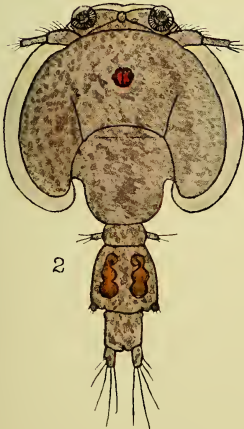
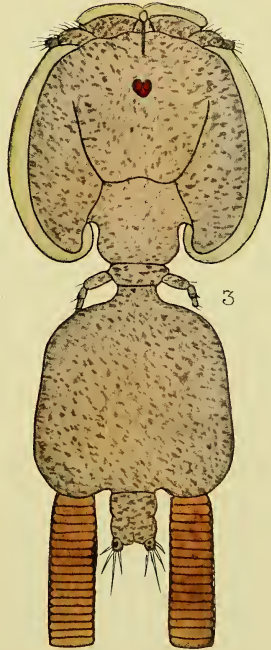
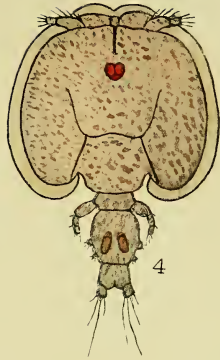
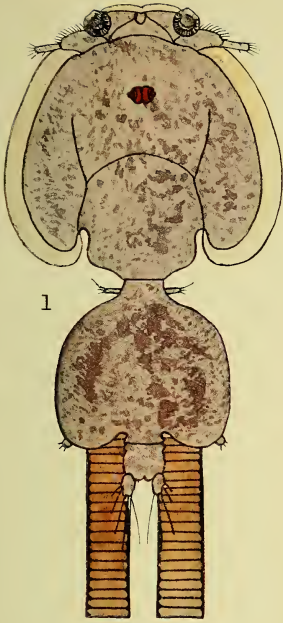


Plate 11

PLATE XI.

FIGS.

1-6. *Sciænophilus tenuis* P. J. van Beneden, ♀. (p. 63.)

1. Dorsal view (natural size).
2. Dorsal view (enlarged).
3. Dorsal view (cephalothorax only).
4. Ventral view (cephalothorax, right half only).
5. Mandible.
6. Caudal rami.

(After P. J. van Beneden.)

PLATE XI

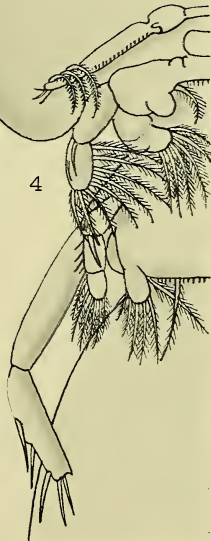
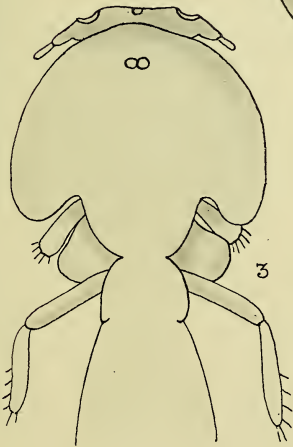
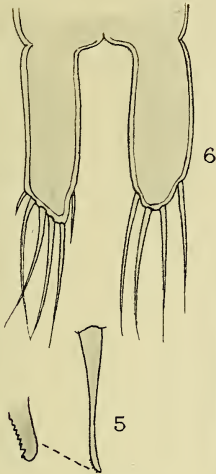


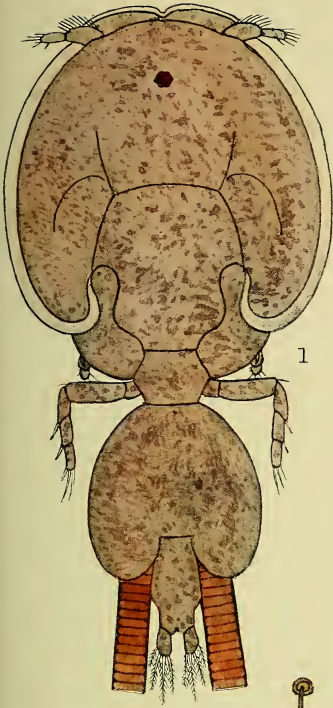
Plate 12

PLATE XII.

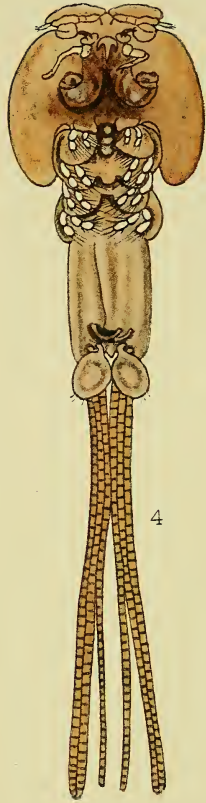
FIGS.

1. *Lepeophtheirus nordmanni* (M. Edwards). (p. 66.)
 1. Dorsal view, ♀, × 9.
- 2, 3. *Lepeophtheirus pectoralis* (O. F. Müller). (p. 64.)
 2. Newly hatched nauplius, × 52.
 3. "Chalimus" stage, × 26.
- 4, 5. *Demoleus paradoxus* (Otto). (p. 79.)
 4. Ventral view, ♀. (After Otto.)
 5. Ventral view, ♂. (After Otto.)

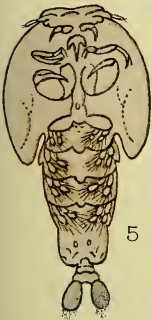
(Figures 4 and 5 enlarged.)



1



4



5



3

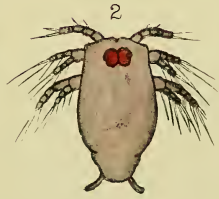
f.

c

b

f.

f. v.



2

Plate 13

PLATE XIII.

FIGS.

1-4. *Lepeophtheirus pectoralis* (O. F. Müller), ♀. (pp. 9-18 and 64.)

1. Ventral view, shewing the various appendages and their muscles, × 17.
2. Dorsal view, shewing the dorsal muscles, × 17.
3. Ventral view, shewing the alimentary canal and digestive glands, × 17.
4. Ventral view, shewing the nervous system *in situ*, × 17.

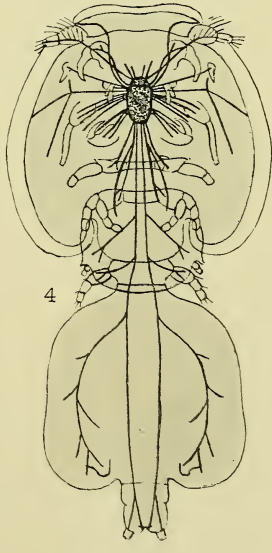
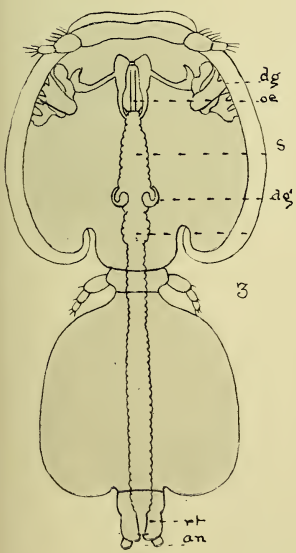
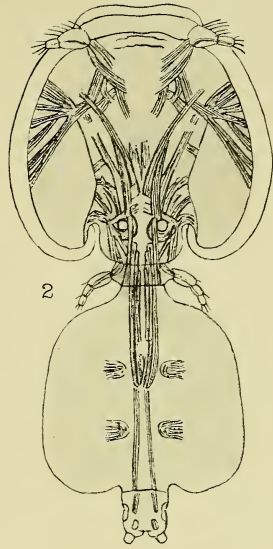
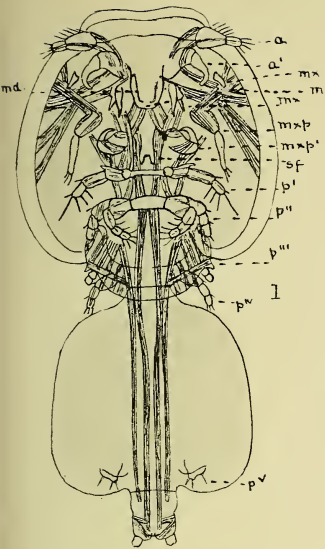


Plate 14

.

PLATE XIV.

FIGS.

- 1-10. *Lepeophtheirus pectoralis* (O. F. Müller). (pp. 9-18 and 64.)
1. Ventral view, shewing the reproductive organs, ♀, × 17.
 2. Genital segment and abdomen, ♀, immature.
 3. Ventral view, shewing the reproductive organs, ♂, × 17.
 4. Longitudinal section of the ovary.
 5. Transverse section through genital segment, ♀, mature.
 6. Transverse section through genital segment, ♂, mature.
 7. Left anterior digestive gland.
 8. Mouth from the anterior surface, shewing the mandibles *in situ*, and the ducts from the right and left anterior digestive glands.
 9. Spermatophores detached from the genital openings of a female.
 10. Median longitudinal section of the ganglia, shewing the "pinhole" œsophagus passing through between the supra- and sub-œsophageal parts.

(Figures much enlarged.)

PLATE XIV

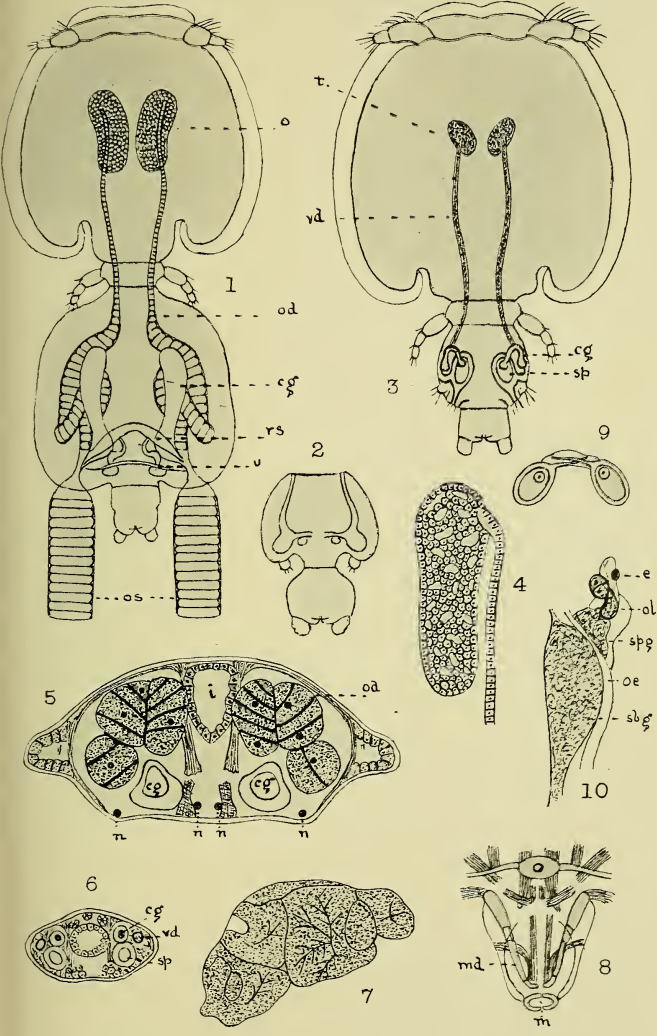


Plate 15

PLATE XV.

FIGS.

1-9. *Lepeophtheirus pectoralis* (O. F. Müller), ♀. (pp. 9-18 and 46.)

1. Nearly median longitudinal section.
2. Part of transverse section of the intestine.
3. Horizontal section of the supra-oesophageal ganglion, shewing the crossing of the fibres of the optic nerves.
4. Transverse section of the eyes.
5. One of the antennules, shewing the nerve endings.
6. Transverse section in the region of the supra- and sub-oesophageal ganglia.
7. Transverse section in the region of the eyes.
8. Transverse section in the region of the second maxillipeds.
9. The nervous system from the ventral aspect.

(Figures much enlarged.)

PLATE XV

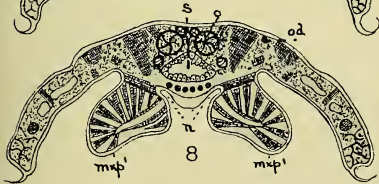
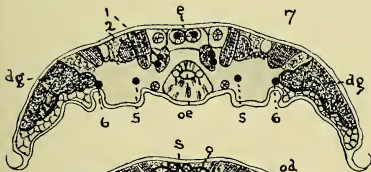
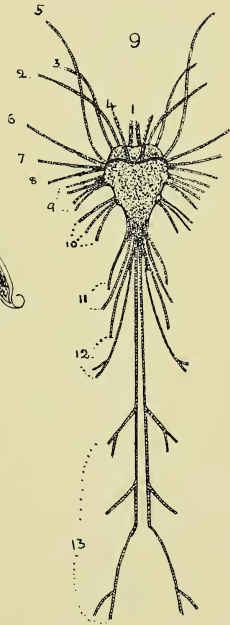
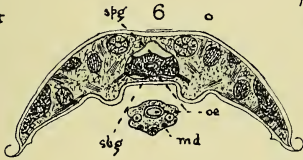
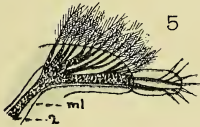
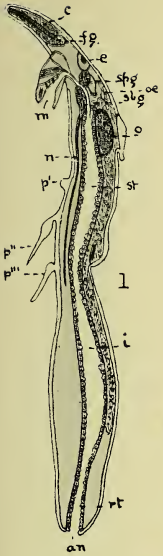


Plate 16

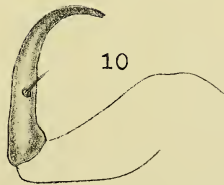
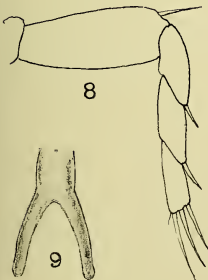
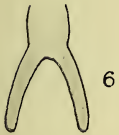
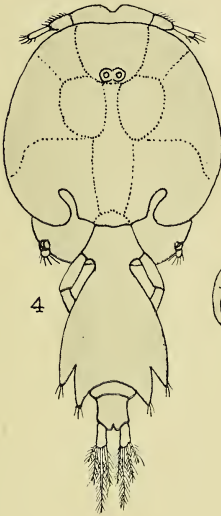
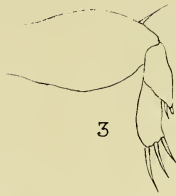
PLATE XVI.

FIGS.

- 1-3. *Lepeophtheirus pectoralis* (O. F. Müller), ♀. (p. 64.)
1. Sternal fork.
2. Second maxilliped.
3. Foot of fourth pair.
- 4-11. *Lepeophtheirus nordmanni* (M. Edwards), ♀ & ♂. (p. 66.)
4. ♂ Dorsal view. (This figure after C. B. Wilson.)
5. ♀ Antenna.
6. ♀ Sternal fork.
7. ♀ Second maxilliped.
8. ♀ Foot of fourth pair.
9. ♀ Sternal fork.
10. ♀ Second maxilliped.
11. ♀ Foot of fourth pair.

(The last three figures are from a second specimen.)

PLATE XVI

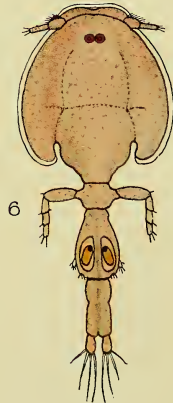
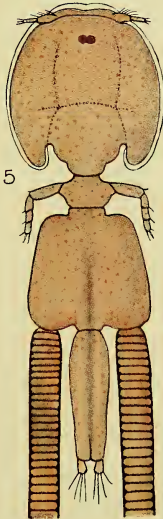
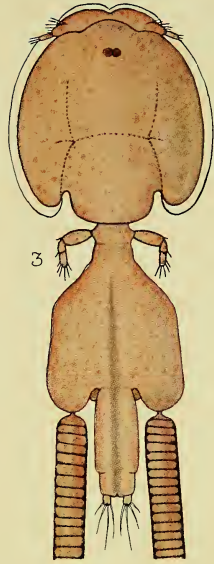
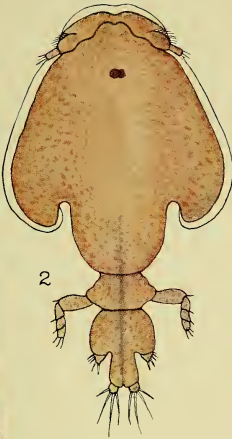
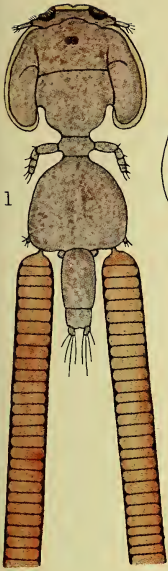


11

PLATE XVII.

FIGS.

1. *Caligus diaphanus* Nordmann. (p. 60.)
 1. Dorsal view, ♀, × 13.
2. *Lepeophtheirus hippoglossi* (Kröyer). (p. 67.)
 2. Dorsal view, ♀ immature.
3. *Lepeophtheirus thompsoni* Baird. (p. 69.)
 3. Dorsal view, ♀, × 8.75.
4. *Lepeophtheirus salmonis* (Kröyer). (p. 71.)
 4. Dorsal view, ♀, × 4.
- 5, 6. *Lepeophtheirus pollachii* Bassett-Smith. (p. 73.)
 5. Dorsal view, ♀, × 10.
 6. Dorsal view, ♂, × 13.



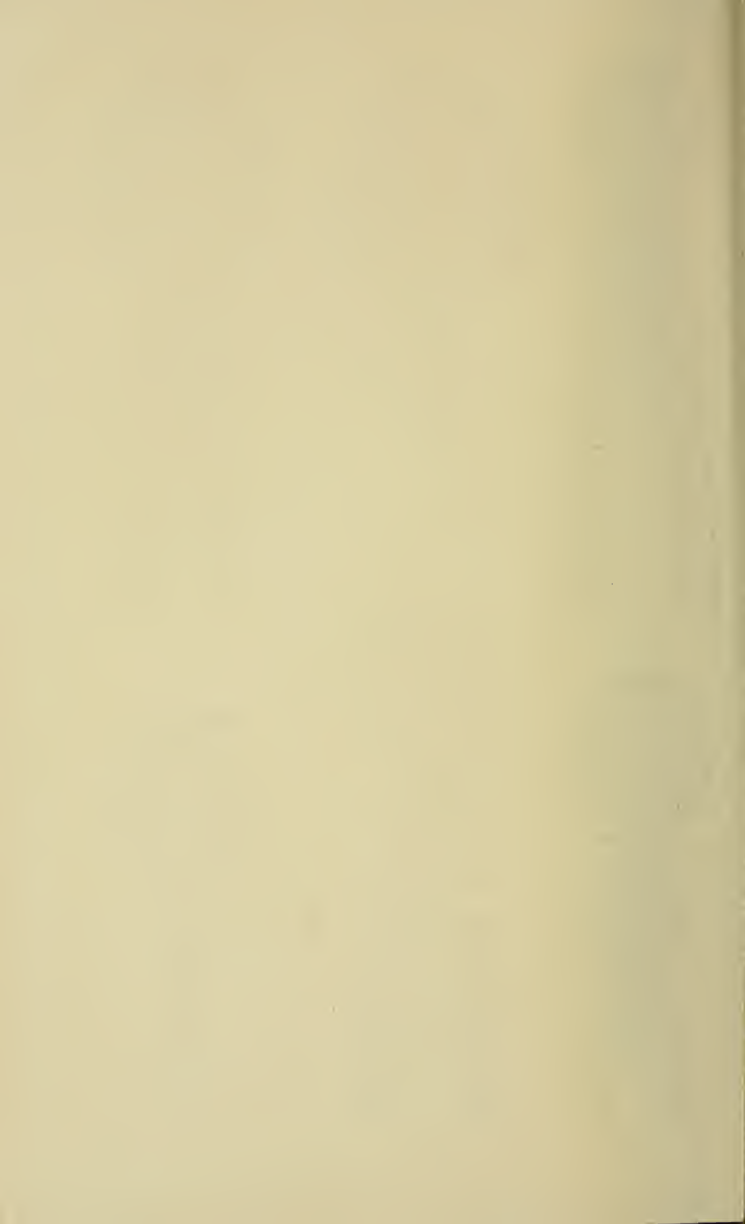


Plate 18

PLATE XVIII.

FIGS.

- 1-3. *Caligus centrodonti* Baird, ♀. (p. 50.)
1. Sternal fork.
2. Second maxilliped.
3. Foot of fourth pair.
- 4, 5. *Caligus labracis* T. Scott, ♀. (p. 53.)
4. Sternal fork.
5. Foot of fourth pair.
- 6, 7. *Caligus diaphanus* Nordmann, ♀. (p. 60.)
6. Second maxilliped.
7. Foot of fourth pair.
- 8-10. *Lepeophtheirus hippoglossi* (Kröyer), ♀. (p. 67.)
8. Sternal fork.
9. First maxilliped.
10. Second maxilliped.
- 11, 12. *Lepeophtheirus salmonis* (Kröyer), ♀. (p. 71.)
11. Sternal fork.
12. Foot of fourth pair.
- 13-15. *Lepeophtheirus pollachii* Bassett-Smith, ♀. (p. 73.)
13. First maxilliped.
14. Second maxilliped.
15. Foot of fourth pair.
- 16-19. *Lepeophtheirus sturionis* (Kröyer), ♀. (p. 74.)
16. Sternal fork.
17. Second maxilliped.
18. Foot of fourth pair.
19. Furcal joints.

(Figures much enlarged.)

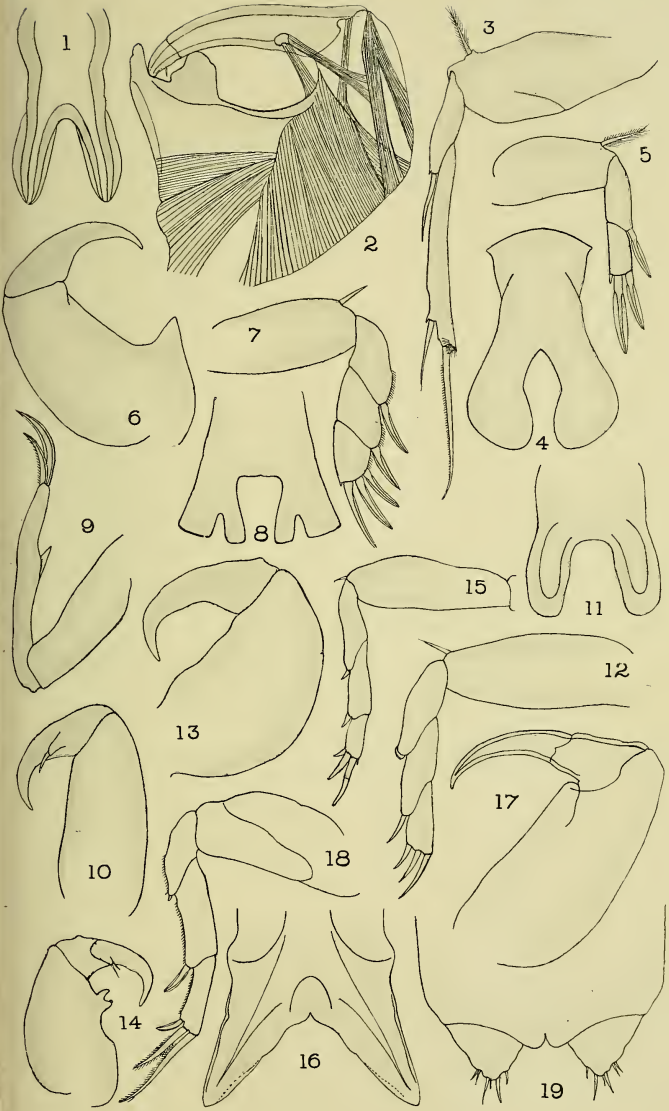


Plate 19

PLATE XIX.

FIGS.

- 1-9. *Lütkenia asterodermi* Claus, ♀. (p. 76.)
1. Antennule.
2. Antenna.
3. First maxilliped.
4. Second maxilliped.
5. Foot of first pair.
6. Foot of second pair.
7. Foot of third pair.
8. Foot of fourth pair.
9. Abdomen and furcal joints.
10. *Elytrophora brachyptera* Gerstaecker. (p. 83.)
10. Foot of second pair, ♀.
- 11-18. *Phyllothreus cornutus* (M. Edwards), ♀. (p. 92.)
11. Antennule.
12. Antenna.
13. First maxilliped.
14. Second maxilliped.
15. Foot of first pair.
16. Foot of second pair.
17. Foot of third pair.
18. Foot of fourth pair.

(Figures much enlarged.)

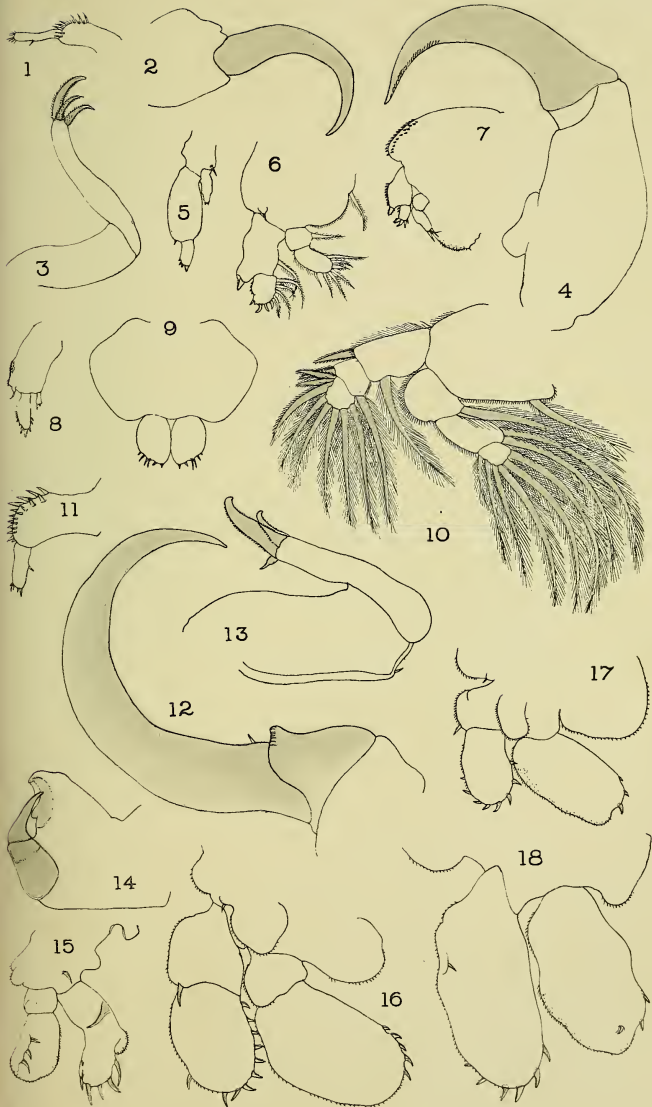


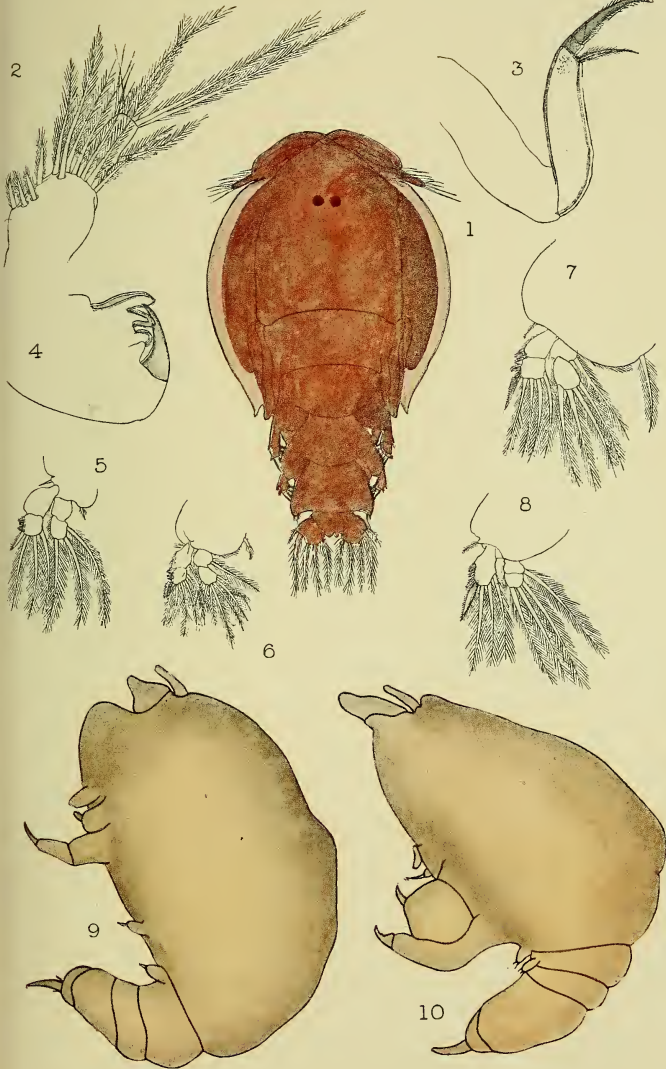
Plate 20

PLATE XX.

Figs.

- 1-8. *Nogaus ambiguus* T. Scott, ♂. (p. 78.)
1. Dorsal view, $\times 13$.
2. Antennule.
3. First maxilliped.
4. Second maxilliped.
5. Foot of first pair.
6. Foot of second pair.
7. Foot of third pair.
8. Foot of fourth pair.
9. *Chondracanthus annulatus* Olsson. (p. 169.)
9. Lateral view, ♂, $\times 50$.
10. *Chondracanthus merluccii* (Holten). (p. 180.)
10. Lateral view, ♂, $\times 115$.

(Figures 2-8 much enlarged.)



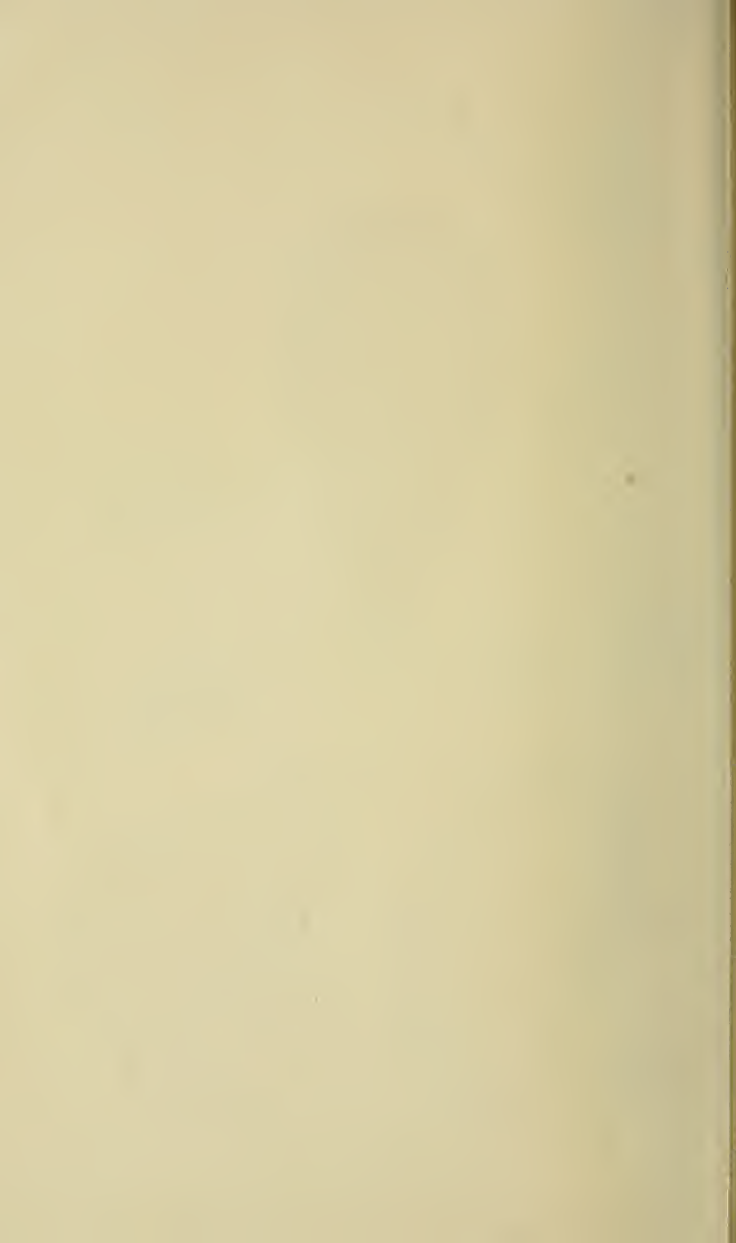


Plate 21

PLATE XXI.

FIGS.

1. *Lepeophtheirus sturionis* (Kröyer). (p. 74.)
 1. Dorsal view, ♀, × 6·6.
2. *Pandarus bicolor* Leach. (p. 95.)
 2. Dorsal view, ♂ (juv.) = *Nogagus latus* T. Scott, × 15.
- 3, 4. *Cecrops latreillii* Leach. (p. 98.)
 3. Dorsal view, ♀, × 2.
 4. Dorsal view, ♂, × 2.
5. *Orthagoriscicola muricata* (Kröyer). (p. 100.)
 5. Dorsal view, ♀, × 2·5.

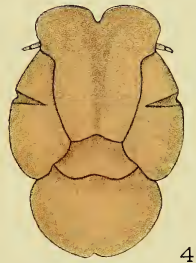
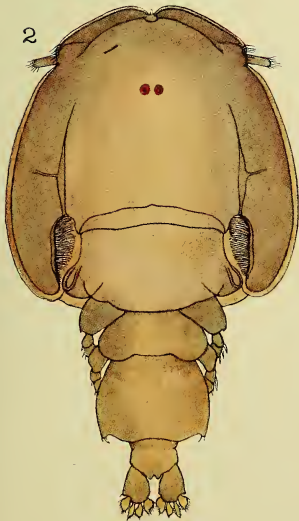
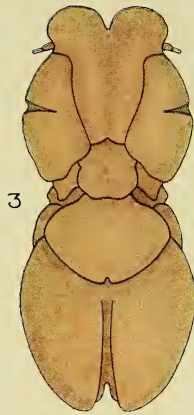
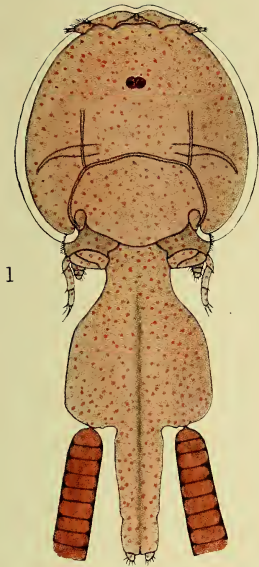


Plate 22

PLATE XXII.

FIGS.

- 1, 2. *Trebius caudatus* Kröyer. (p. 81.)
 1. Dorsal view, ♀, × 6·6.
 2. Dorsal view, ♂, × 15.
3. *Dinemoura producta* (O. F. Müller). (p. 86.)
 3. Dorsal view, ♀, × 3·3.
4. *Echthrogaleus coleoptratus* (Guérin). (p. 89.)
 4. Dorsal view, ♀, × 4.
- 5, 6. *Pandarus bicolor* Leach. (p. 95.)
 5. Dorsal view, ♀, × 5.
 6. Dorsal view, ♂, × 10.

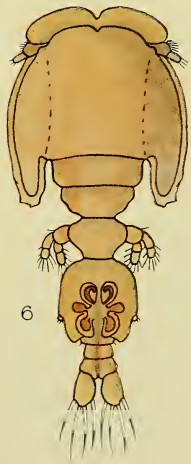
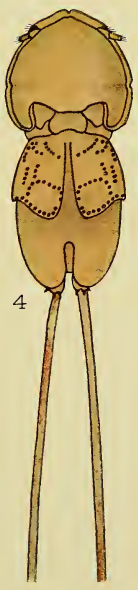
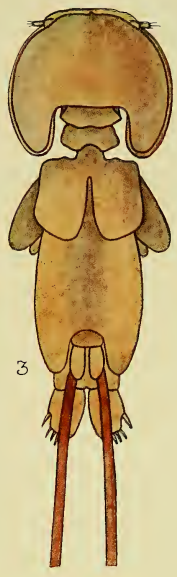
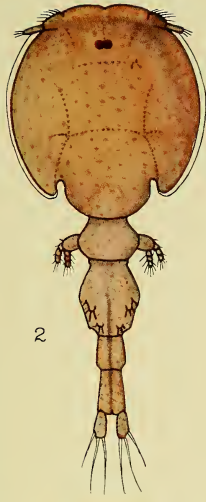
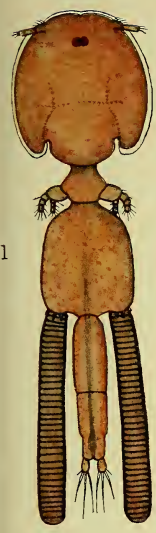


PLATE XXIII.

FIGS.

- 1, 2. *Elytrophora brachyptera* Gerstaecker. (p. 83.)
 1. Dorsal view, ♀, × 8.
 2. Dorsal view, ♂, × 8.
3. *Phyllothreus cornutus* (M. Edwards). (p. 92.)
 3. Dorsal view, ♀, × 4.5.
4. *Lütkenia asterodermi* Claus. (p. 76.)
 4. Dorsal view, ♀ (enlarged).
- 5, 6. *Anthosoma crassum* (Abildgaard). (p. 108.)
 5. Dorsal view, ♀, × 3.
 6. Ventral view, ♀, × 3.

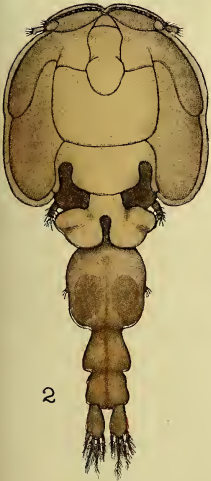
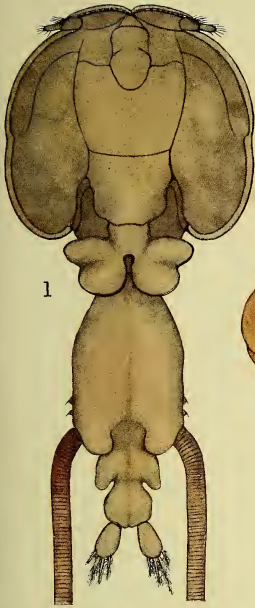


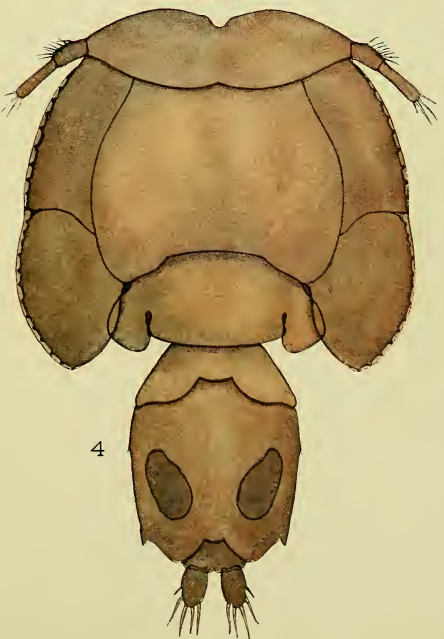
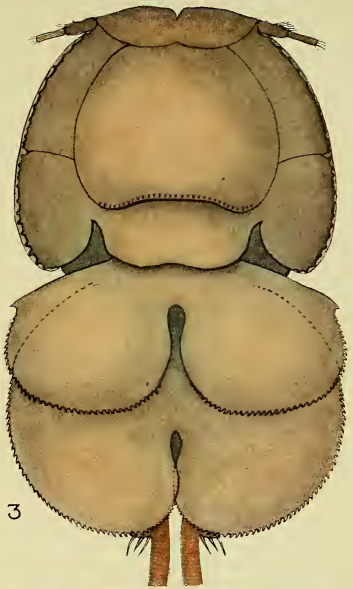
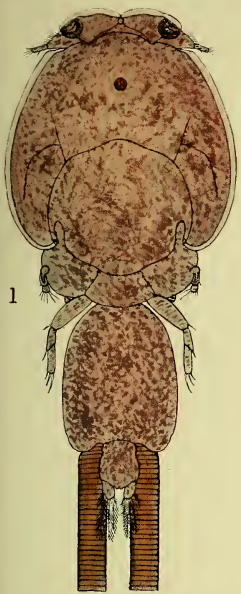


Plate 24

PLATE XXIV.

FIGS.

- 1, 2. *Caligus curtus* O. F. Müller. (p. 45.)
1. Dorsal view, ♀, × 8.
2. Dorsal view, ♂, × 6·5.
- 3, 4. *Philorthragoriscus serratus* (Kröyer). (p. 104.)
3. Dorsal view, ♀, × 12·5.
4. Dorsal view, ♂, × 20.



1

3

2

4

Plate 25

PLATE XXV.

FIGS.

- 1-6. *Thersitina gasterostei* (Pagenstecher), ♀. (p. 42.)
1. Antennule.
2. Antenna.
3. Second maxilliped.
4. Foot of first pair.
5. Foot of fourth pair.
6. Abdomen and furcal joints.
- 7-9. *Caligus curtus* O. F. Müller, ♀. (p. 45.)
7. Sternal fork.
8. Second maxilliped.
9. Foot of fourth pair.
10. *Lepeophtheirus thompsoni* Baird. (p. 69.)
10. Sternal fork, ♀.
- 11-16. *Caligus minimus* Otto, ♀ & ♂ (p. 46.)
11. Antennule, ♀.
12. Sternal fork, ♀.
13. Sternal fork, ♂.
14. Second maxilliped, ♀.
15. Foot of fourth pair, ♀.
16. Second maxilliped, ♂.

(Figures much enlarged.)

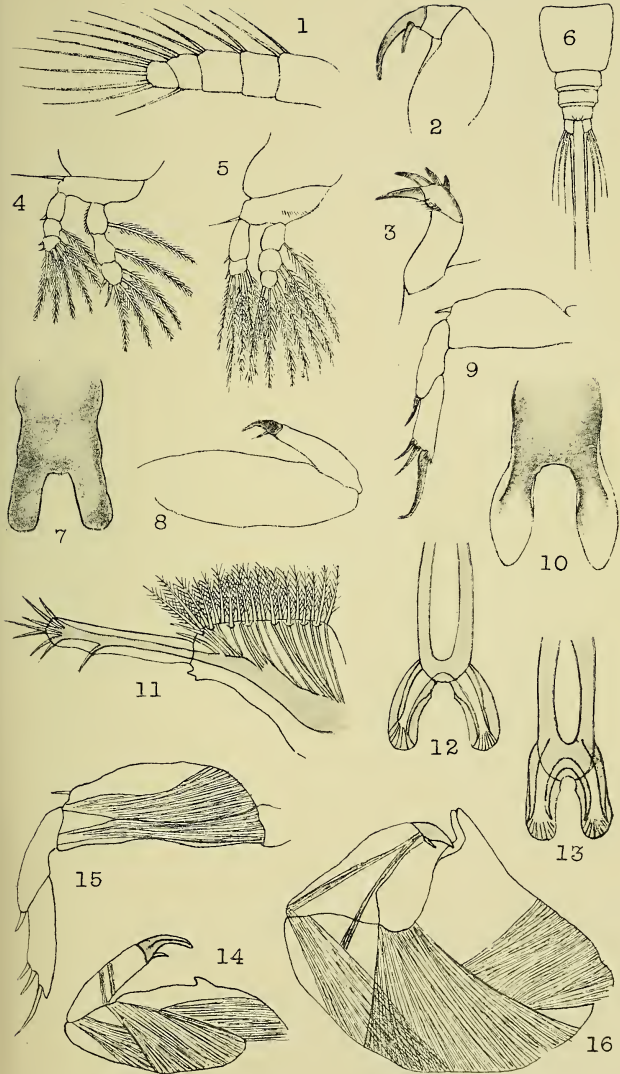


Plate 26

PLATE XXVI.

FIGS.

- 1-3. *Dinemoura producta* (O. F. Müller), ♀. (p. 86.)
1. Foot of second pair.
2. Foot of fourth pair.
3. Fifth foot.
- 4-19. *Pandarus bicolor* Leach, ♀ & ♂. (p. 95.)
4. ♀ Antennule.
5. Antenna.
6. Maxilla.
7. First maxilliped.
8. Second maxilliped.
9. Foot of first pair.
10. Foot of second pair.
11. Foot of third pair.
12. Foot of fourth pair.
13. ♂ Antennule.
14. Antenna.
15. Maxilla.
16. First maxilliped.
17. Second maxilliped.
18. Foot of first pair.
19. Foot of second pair.

(Figures much enlarged.)

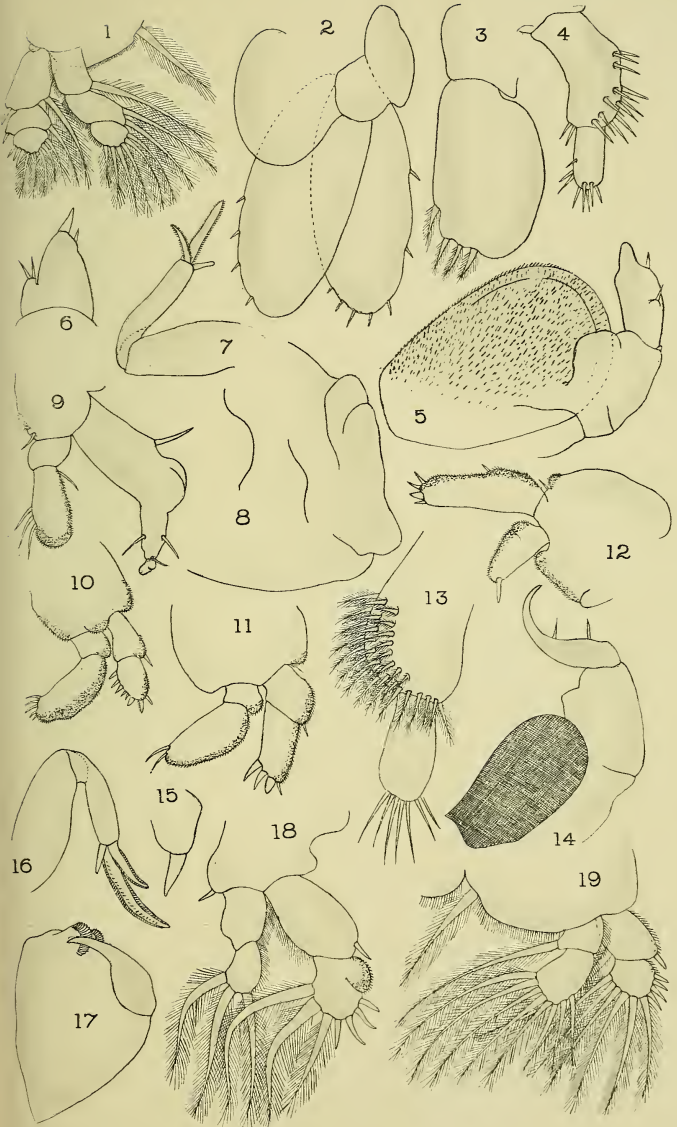


Plate 27

PLATE XXVII.

FIGS.

- 1-8. *Dinemoura producta* (O. F. Müller), ♀. (p. 86.)
1. Antennule.
2. Antenna.
3. Mandible.
4. Maxilla.
5. First maxilliped.
6. Second maxilliped.
7. Foot of first pair.
8. Foot of third pair.
- 9, 10. *Cecrops latreillii* Leach, ♀. (p. 98.)
9. Antenna.
10. First maxilliped.
- 11-24. *Philorthragoriscus serratus* (Kröyer), ♀ & ♂. (p. 104.)
11. ♀ Antennule.
12. Antenna.
13. Mandible.
14. Maxilla.
15. First maxilliped.
16. Second maxilliped.
17. Foot of first pair.
18. Foot of third pair.
19. Foot of fourth pair.
20. Abdomen and furcal joints.
21. ♂ Antenna.
22. Maxilla.
23. Second maxilliped.
24. Foot of second pair.

(Figures much enlarged.)

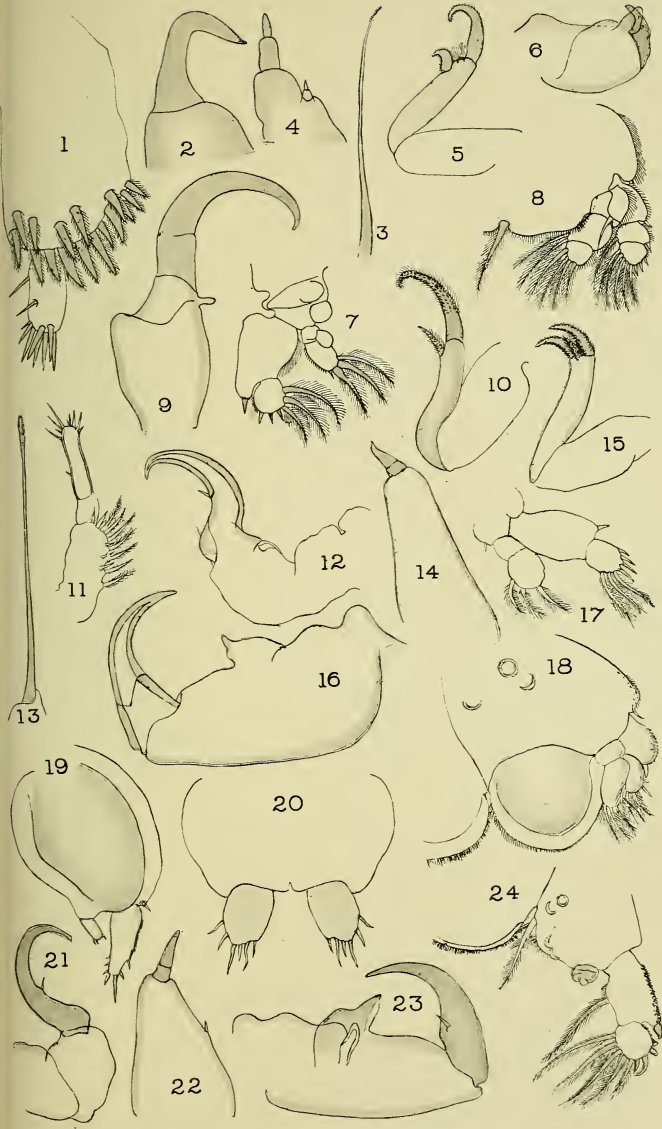


Plate 28

PLATE XXVIII.

FIGS.

- 1-7. *Cecrops latreillii* Leach, ♀. (p. 98.)
1. Antennule.
2. Second maxilliped.
3. Foot of first pair.
4. Foot of second pair.
5. Foot of third pair.
6. Foot of fourth pair.
7. Fifth foot.
- 8-18. *Orthagoriscola muricata* (Kröyer), ♀. (p. 100.)
8. Antennule.
9. Antenna.
10. Mandible.
11. Maxilla.
12. First maxilliped.
13. Second maxilliped.
14. Foot of first pair.
15. Foot of second pair.
16. Foot of third pair.
17. Foot of fourth pair.
18. Fifth foot.

(Figures much enlarged.)

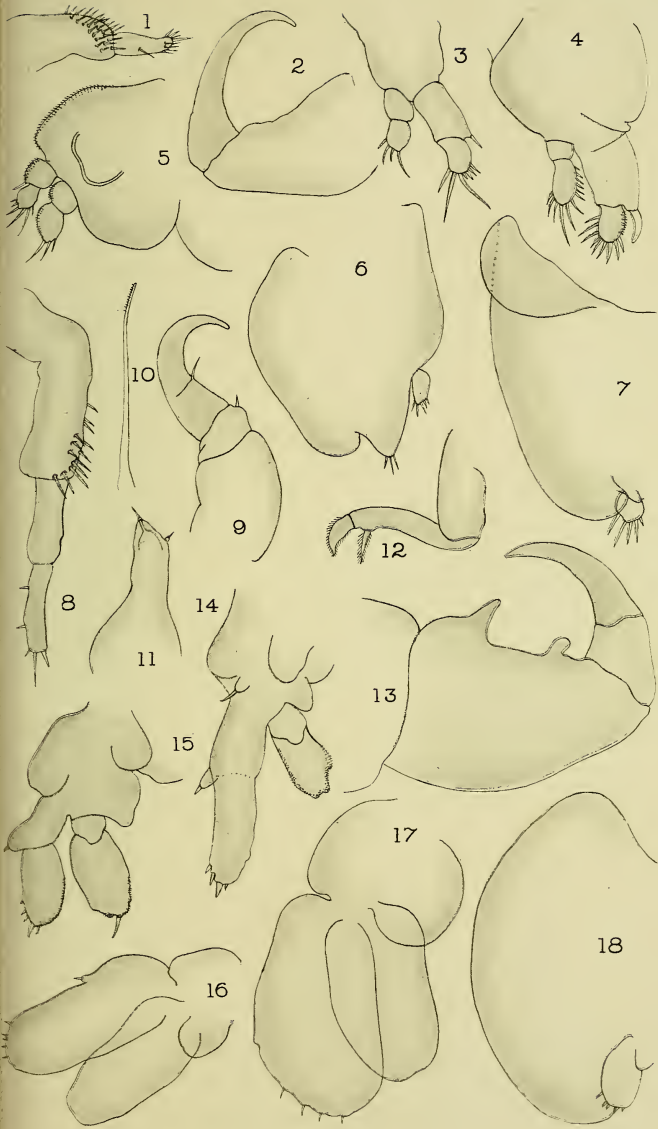




Plate 29

PLATE XXIX.

FIGS.

1. *Echthrogaleus lütkeni* (Norman). (p. 90.)
 1. Dorsal view, ♂ (enlarged).
- 2-5. *Lernanthropus kröyeri* P. J. van Beneden. (p. 110.)
 2. Dorsal view, ♀, × 13·4.
 3. Abdomen and furcal joints, ♀ (much enlarged).
 4. Dorsal view, ♂, × 13·4.
 5. Abdomen and furcal joints, ♂ (much enlarged).

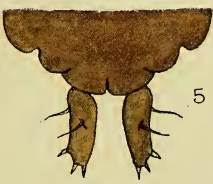
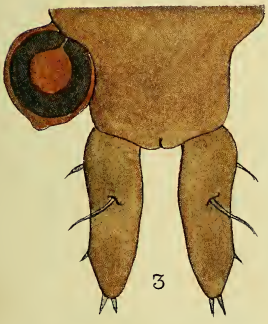
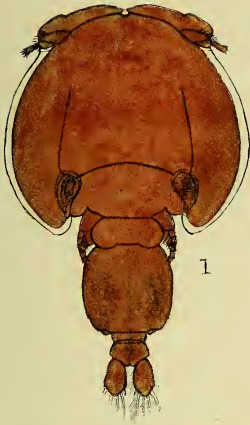




Plate 30

PLATE XXX.

FIGS.

- 1-8. *Echthrogaleus lütkeni* (Norman), ♂. (p. 90.)
1. Antennule.
 2. Antenna.
 3. First maxilliped.
 4. Second maxilliped.
 5. Foot of first pair.
 6. Foot of second pair.
 7. Foot of third pair.
 8. Foot of fourth pair.
- 9-17. *Lernanthropus kröyeri* P. J. van Beneden, ♀. (p. 110.)
9. Antennule with secondary process.
 10. Antenna.
 11. Mandible.
 12. Maxilla.
 13. First maxilliped.
 14. Second maxilliped.
 15. Foot of first pair.
 16. Foot of second pair.
 17. Outer ramus of second foot, ♂.

(Figures much enlarged.)

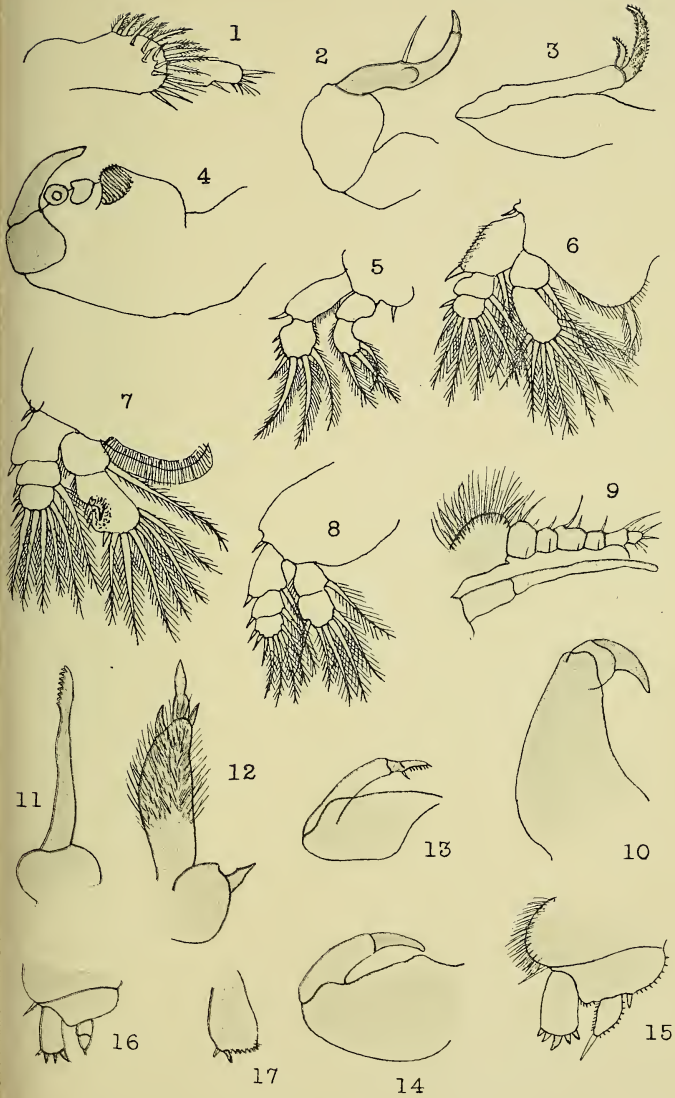


Plate 31

PLATE XXXI.

FIGS.

- 1-6. *Elytrophora brachyptera* Gerstaecker, ♀. (p. 83.)
1. Antenna.
 2. First maxilliped.
 3. Second maxilliped.
 4. Foot of first pair.
 5. Foot of fourth pair.
 6. Antenna, ♂.
- 7-18. *Dichelestium oblongum* (Abildgaard), ♀ & ♂. (p. 106.)
7. ♀ Antennule.
 8. Antenna.
 9. Mandible.
 10. Maxilla.
 11. First maxilliped.
 12. Second maxilliped.
 13. Foot of first pair.
 14. Foot of second pair.
 15. Foot of fourth pair.
 16. ♂ Antenna.
 17. Foot of second pair.
 18. Foot of fourth pair.

(Figures much enlarged.)

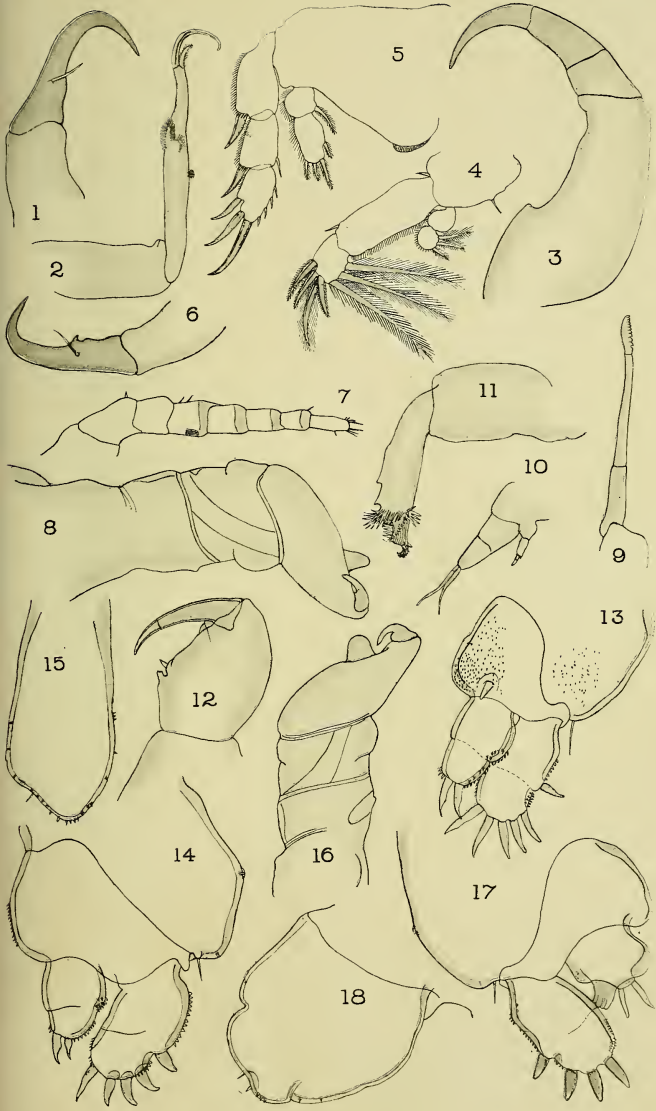


Plate 32

PLATE XXXII.

FIGS.

1-11. *Hatschekia mulli* (P. J. van Beneden), ♀. (p. 114.)

1. Adult female, dorsal view, $\times 24.5$.
2. Lateral view of head and thorax, adult $\times 36$.
3. Dorsal view, juv., $\times 36$.
4. Antennule.
5. Antenna.
6. Spiniform process at base of antenna.
7. Mandible.
8. Maxilla.
9. Maxilliped.
10. Foot of first pair.
11. Foot of second pair.

(Figures 4-11 much enlarged.)

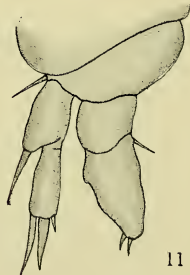
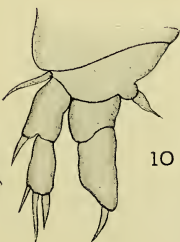
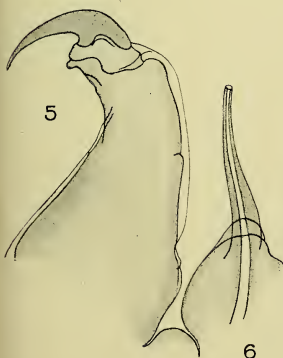
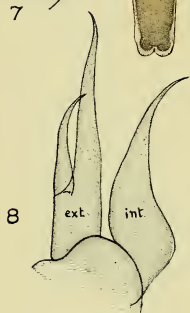
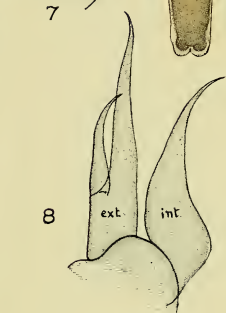
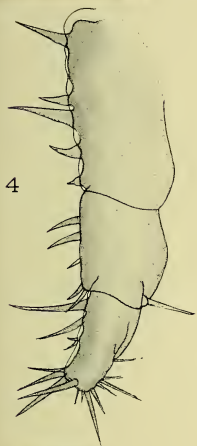
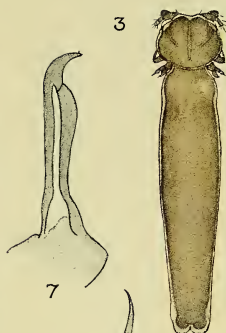
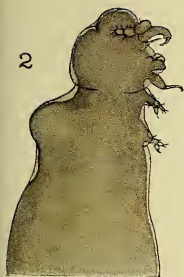


Plate 33

PLATE XXXIII.

FIGS.

1. *Hatschekia cluthæ* (T. Scott). (p. 117.)
 1. Dorsal view, ♀, × 58.
2. *Hatschekia labracis* (P. J. van Beneden). (p. 115.)
 2. Dorsal view, ♀, × 28.
- 3, 4. *Hatschekia hippoglossi* (Kröyer). (p. 112.)
 3. Dorsal view, ♀, × 7.
 4. Dorsal view, ♂, × 34.
5. *Thysanote impulica* (Nordmann). (p. 187.)
 5. Dorsal view, ♀, × 10.
6. ? *Lernæopoda lampri* sp. nov. (p. 202.)
 6. Lateral view, ♂, × 14.

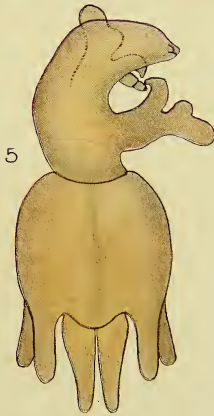
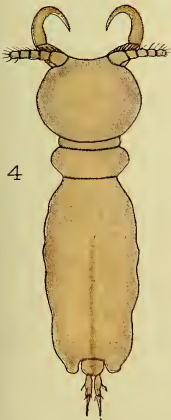
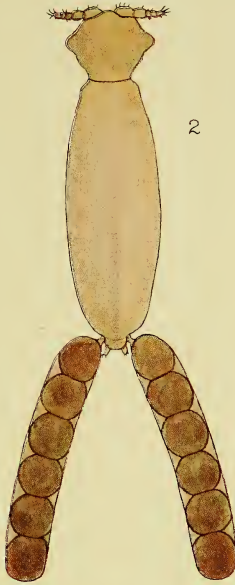


Plate 34

PLATE XXXIV.

FIGS.

- 1-5. *Hatschekia cluthæ* (T. Scott), ♀. (p. 117.)
1. Antennule.
2. Antenna.
3. Maxilla.
4. Second maxilliped.
5. Foot of first pair.
- 6, 7. *Hatschekia labracis* (P. J. van Beneden), ♀. (p. 115.)
6. Antennule.
7. Antenna.
- 8-11. *Hatschekia hippoglossi* (Kröyer), ♀. (p. 112.)
8. Antennule.
9. Mandible.
10. Second maxilliped.
11. Foot of first pair.

(Figures much enlarged.)

PLATE XXXIV

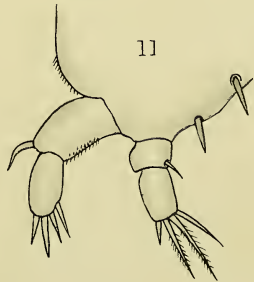
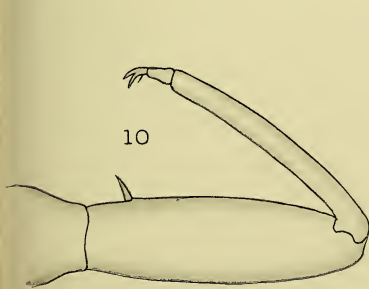
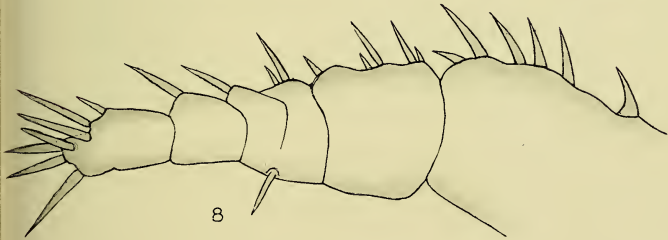
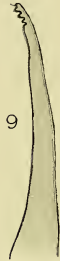
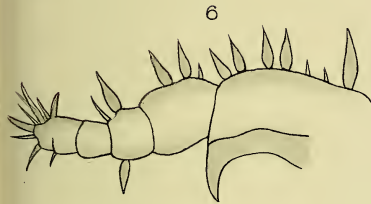
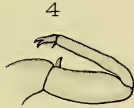
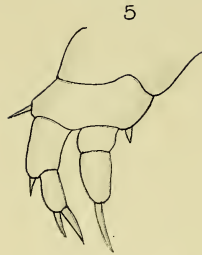


Plate 35

PLATE XXXV.

FIGS.

- 1, 2. *Hatschekia cornigera* T. Scott, ♀. (p. 118.)
1. Dorsal view, × 40.
2. Lateral view of head and thorax, × 80.
- 3-7. *Hatschekia pygmæa* T. Scott, ♀. (p. 119.)
3. Dorsal view, × 45.
4. Maxilliped.
5. Foot of first pair.
6. Foot of second pair.
7. Abdomen and furcal joints.

(Figures 4-7 much enlarged.)

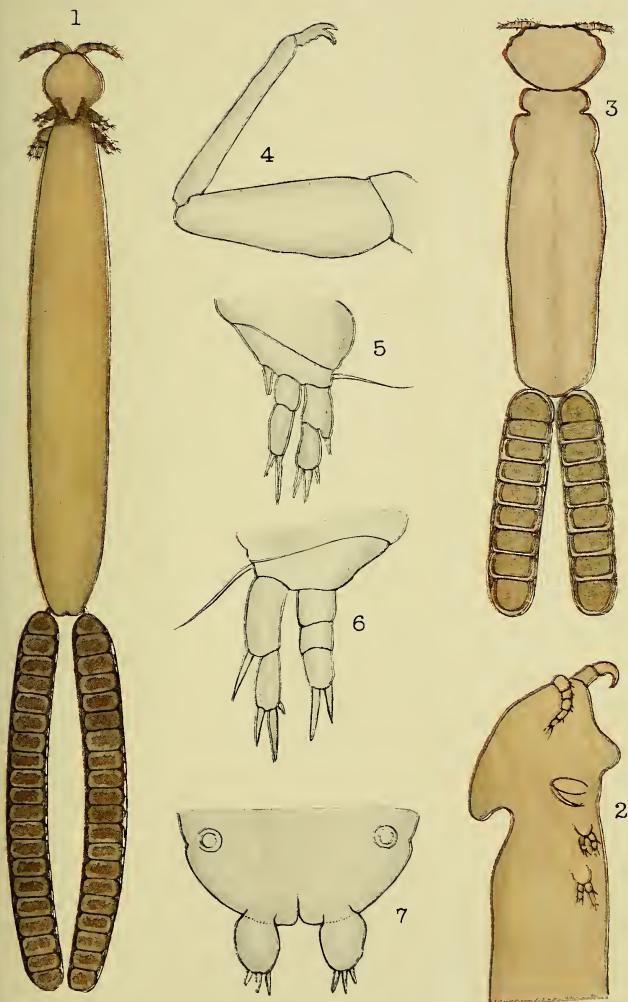


Plate 36

PLATE XXXVI.

FIGS.

1-5. *Hatschekia cornigera* T. Scott, ♀. (p. 118.)

1. Antennule.

2. Antenna.

3. Maxilliped.

4. Foot of first pair.

5. Foot of second pair.

6-9. *Hatschekia pygmæa* T. Scott, ♀. (p. 119.)

6. Antennule.

7. Antenna.

8. Mandible.

9. Maxilla.

(Figures much enlarged.)

PLATE XXXVI

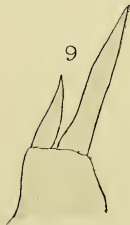
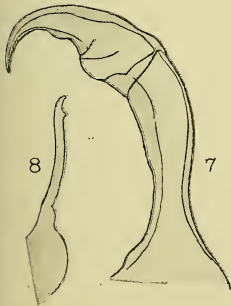
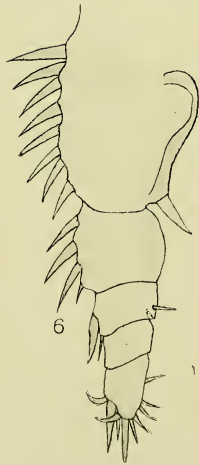
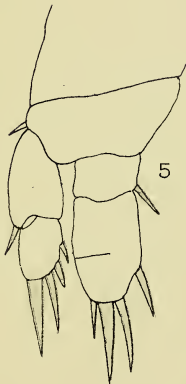
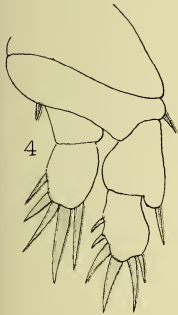
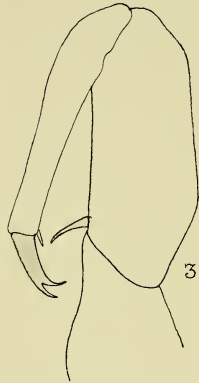
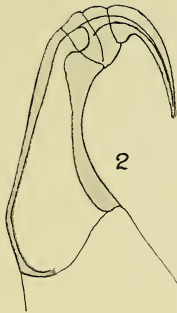


Plate 37

PLATE XXXVII.

FIGS.

1. *Eudactylina acuta* P. J. van Beneden. (p. 126.)
 1. Dorsal view, ♀, × 41.
- 2, 3. *Eudactylina acanthii* A. Scott. (p. 128.)
 2. Dorsal view, ♀, × 41.
 3. Lateral view, ♀, × 41.
- 4, 5. *Eudactylina similis* T. Scott. (p. 130.)
 4. Lateral view, ♀, × 34.
 5. Lateral view, ♂, × 34.
- 6, 7. *Eudactylina minuta* T. Scott. (p. 133.)
 6. Dorsal view, ♀, × 40.
 7. Lateral view, ♀, × 40.

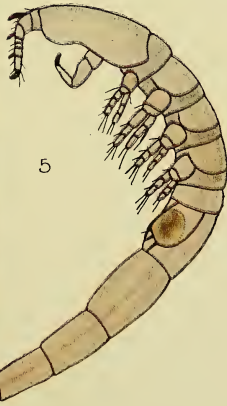
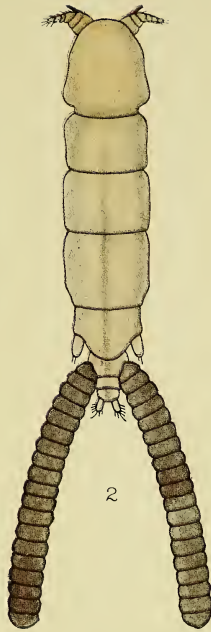
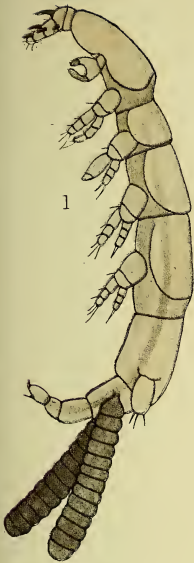


Plate 38

PLATE XXXVIII.

FIGS.

- 1-5. *Eudactylina acuta* P. J. van Beneden, ♀. (p. 126.)
1. Antennule.
2. Foot of first pair.
3. Foot of second pair.
4. Foot of fifth pair.
5. Part of abdomen, and furcal joints.
- 6-12. *Eudactylina acanthii* A. Scott, ♀. (p. 128.)
6. Antennule.
7. Antenna.
8. Foot of first pair.
9. Foot of second pair.
10. Foot of fourth pair.
11. Foot of fifth pair.
12. Part of abdomen, and furcal joints.

(Figures much enlarged.)

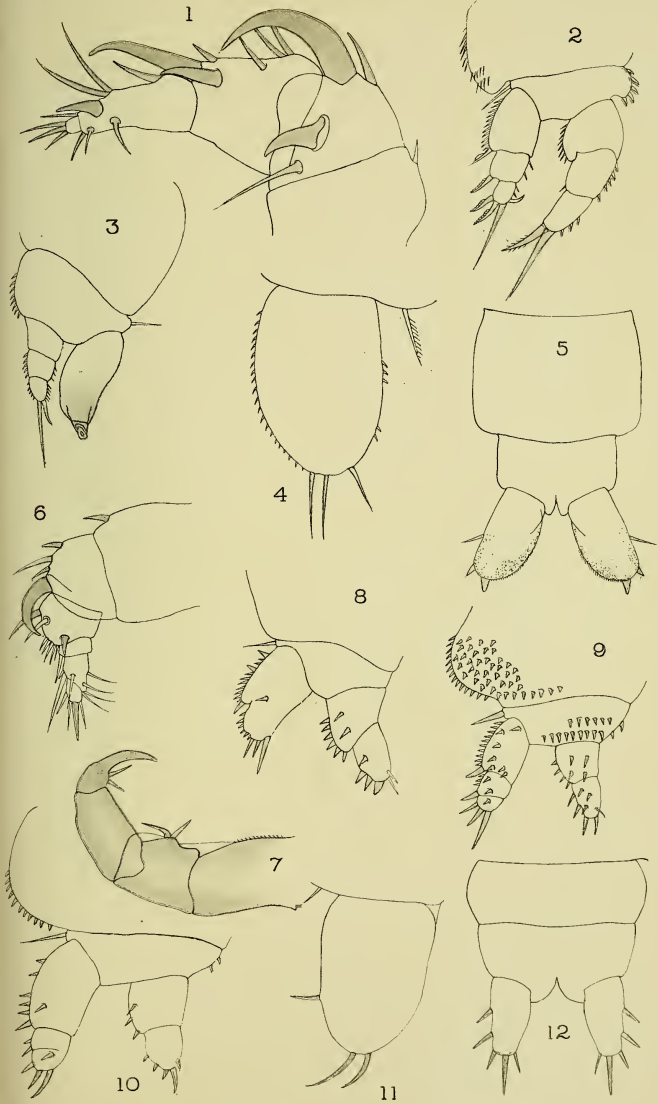


Plate 39

PLATE XXXIX.

FIGS.

1-17. *Eudactylina similis* T. Scott, ♀ & ♂. (p. 130.)

1. ♀ Antennule.
2. Antenna.
3. Mandible.
4. Maxilla.
5. First maxilliped.
6. Second maxilliped.
7. Foot of first pair.
8. Foot of second pair.
9. Foot of fourth pair.
10. Foot of fifth pair.
11. Part of abdomen, and furcal joints.
12. ♂ Antennule.
13. Second maxilliped.
14. Foot of first pair.
15. Foot of second pair.
16. Foot of fourth pair.
17. Part of abdomen, and furcal joints.

(Figures much enlarged.)

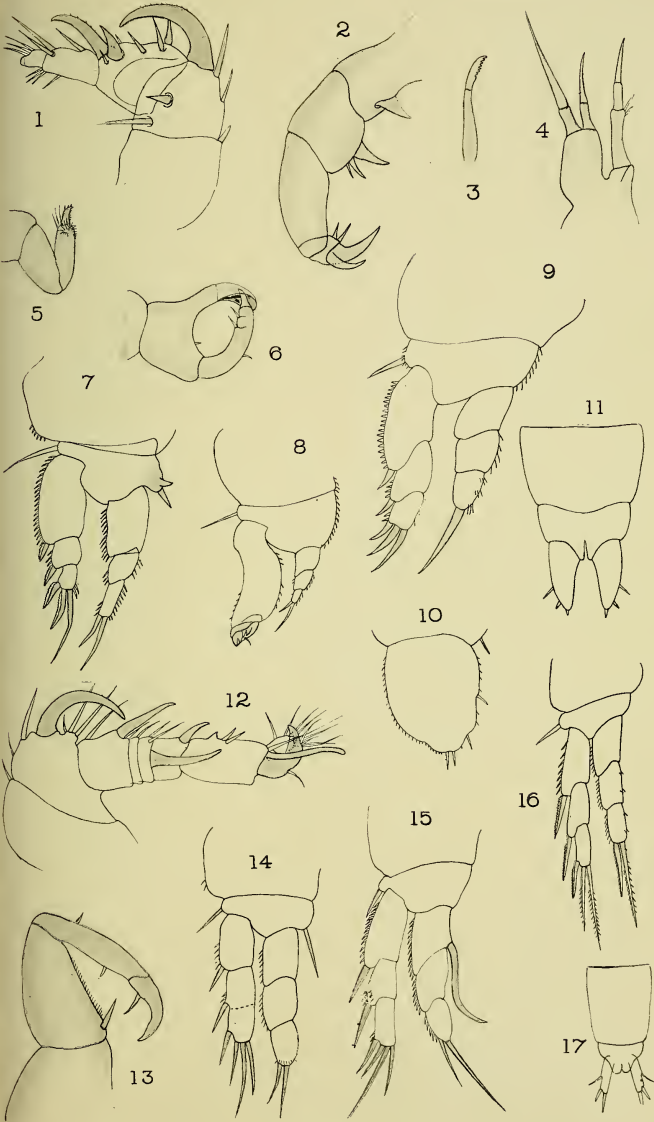


Plate 40

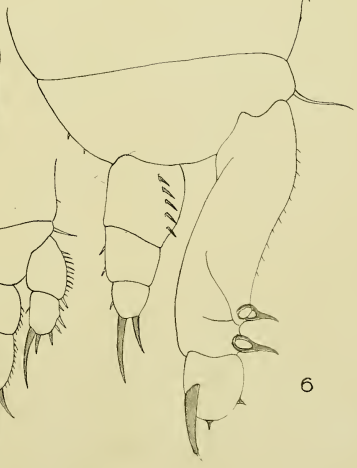
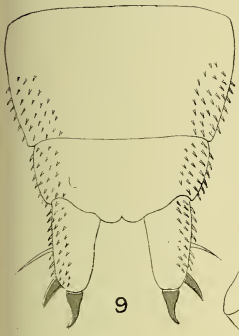
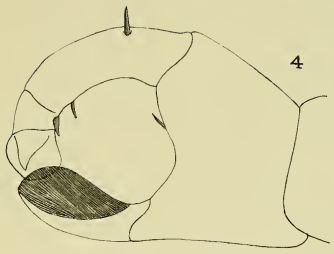
PLATE XL.

FIGS.

1-9. *Eudactylina minuta* T. Scott, ♀. (p. 133.)

1. Antennule.
2. Antenna.
3. First maxilliped.
4. Second maxilliped.
5. Foot of first pair.
6. Foot of second pair.
7. Foot of fourth pair.
8. Foot of fifth pair.
9. Part of abdomen, and furcal joints.

(Figures much enlarged.)



1

4

9

3

8

2

7

5

6

Plate 41

PLATE XLI.

FIGS.

1. *Congericola pallida* P. J. van Beneden, ♀ dorsal view, × 17. (p. 124.)
- 2-4. *Chondracanthus depressus* T. Scott. (p. 172.)
 2. ♀ Dorsal view, × 12.
 3. Posterior end of body in dorsal view, × 12.
 4. Var. *oblongus*, ♀ dorsal view, × 12. (p. 173.)
5. *Chondracanthus zeii* De la Roche, ♀ dorsal view, × 5. (p. 177.)
6. *Chondracanthus ornatus* T. Scott, ♀ dorsal view, × 10. (p. 182.)

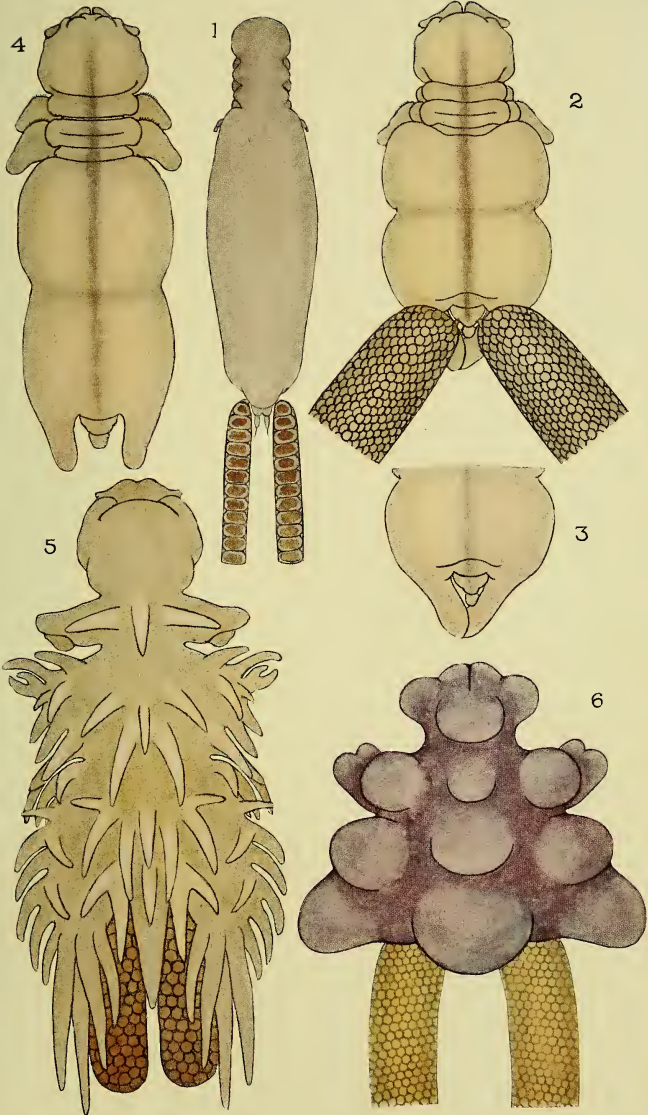
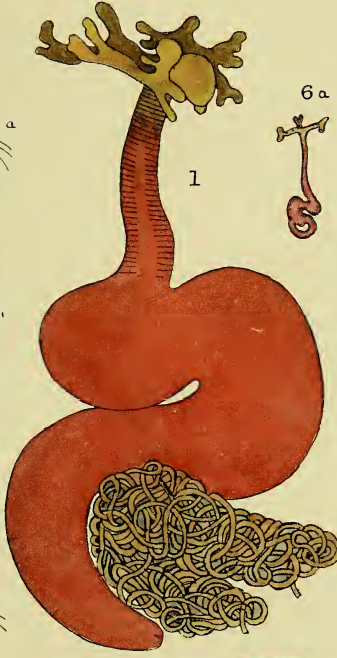
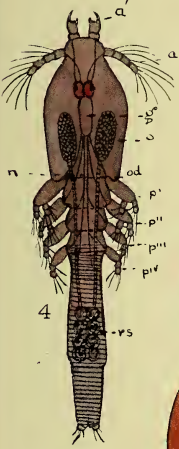
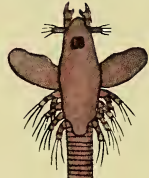
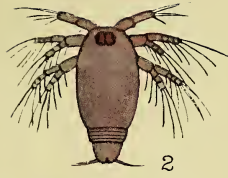


Plate 42

PLATE XLII.

FIGS.

- 1-8. *Lernæa branchialis* Linn. (p. 142.)
1. Mature female, side view, $\times 4$.
 2. Newly hatched nauplius $\times 51$. (p. 21.)
 3. Very young female, unfertilized, dorsal view, $\times 51\frac{1}{2}$.
(p. 21.)
 4. Fertilized female, after leaving the gills of a flounder,
dorsal view $\times 27\frac{1}{2}$. (p. 21.)
 5. Mature male, dorsal view, $\times 28\frac{1}{2}$. (p. 21.)
 6. Fertilized female, 'Pennella stage,' just after attach-
ment to the gills of a whiting, dorsal view, $\times 15\frac{1}{2}$.
(p. 23.)
 - 6a. A later stage than fig. 6; the folding has just been
completed; side view, natural size. (p. 23.)
 7. Apex of the gill-ray of a flounder, normal, $\times 18$.
(p. 22.)
 8. Apex of the gill-ray of a flounder, shewing mal-
formation caused by the young *Lernæa*, $\times 18$.
(p. 22.)



6

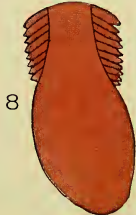
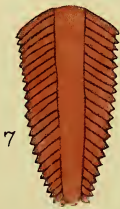
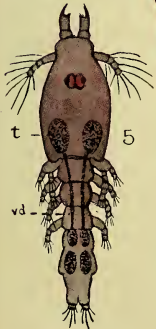


Plate 43

PLATE XLIII.

FIGS.

- 1-7. *Lernæa branchialis* Linn. (p. 142.)
1. Fertilized female, ventral view, shewing the appendages, the reproductive organs, and the nervous system, $\times 47\frac{1}{2}$. (p. 22.)
 2. Mature female, seen from the right side, shewing the maxilliped and four pairs of feet, the alimentary canal, and the reproductive organs; from a specimen cleared in xylol, $\times 4$. (p. 19.)
 3. Transverse section through the middle of the swollen region, shewing the ovary, the oviducts, cement glands, and intestine, $\times 9$. (p. 21.)
 4. Transverse section through the abdomen, $\times 20$. (p. 22.)
 5. Portion of the cement-gland, $\times 20$. (p. 21.)
 6. Transverse section through the region of the eyes of a young fertilized female, $\times 80$. (p. 22.)
 7. Front view of the anchor processes of an adult female, $\times 4$. (p. 22.)

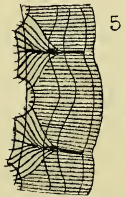
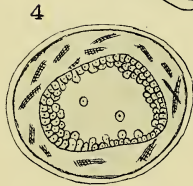
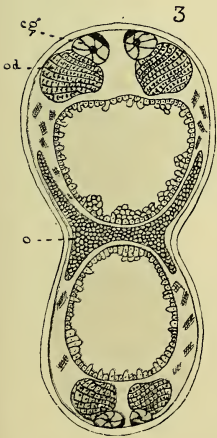
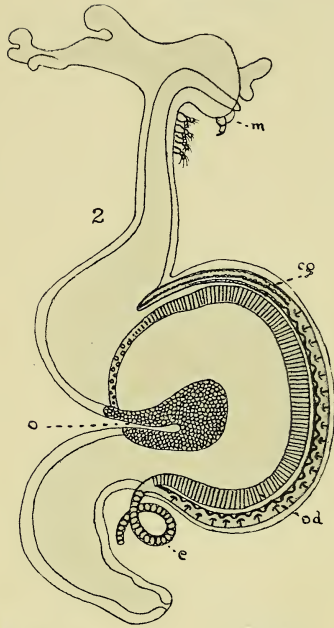
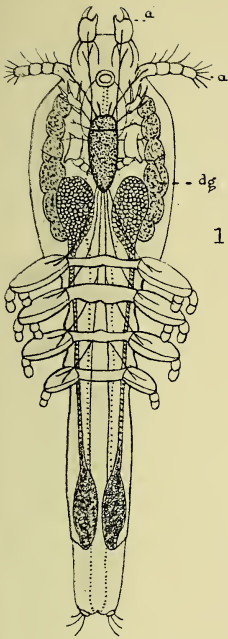




Plate 44

PLATE XLIV.

FIGS.

1. *Lernæa lusci* Bassett-Smith, ♀ side view, × 6. (p. 144.)
2. Another specimen (♀) *in situ* on gill-arch of fish, × about 2.
3. *Lernæa minuta*, T. Scott, ♀ side view, × about 5. (p. 145.)
4. *Lernæa lumpi*, T. Scott, ♀ side view, × about 2. (p. 146.)
- 5-7. *Hæmobaphes cyclopterina* (Fabr.). (p. 147).
 5. Side view (head wanting), × 9.
 6. The head, after Steenstrup & Lütken, enlarged.
 7. The same, seen from another position, enlarged.
8. *Hæmobaphoides ambiguus* T. Scott, ♀ side view, × 7. (p. 148.)

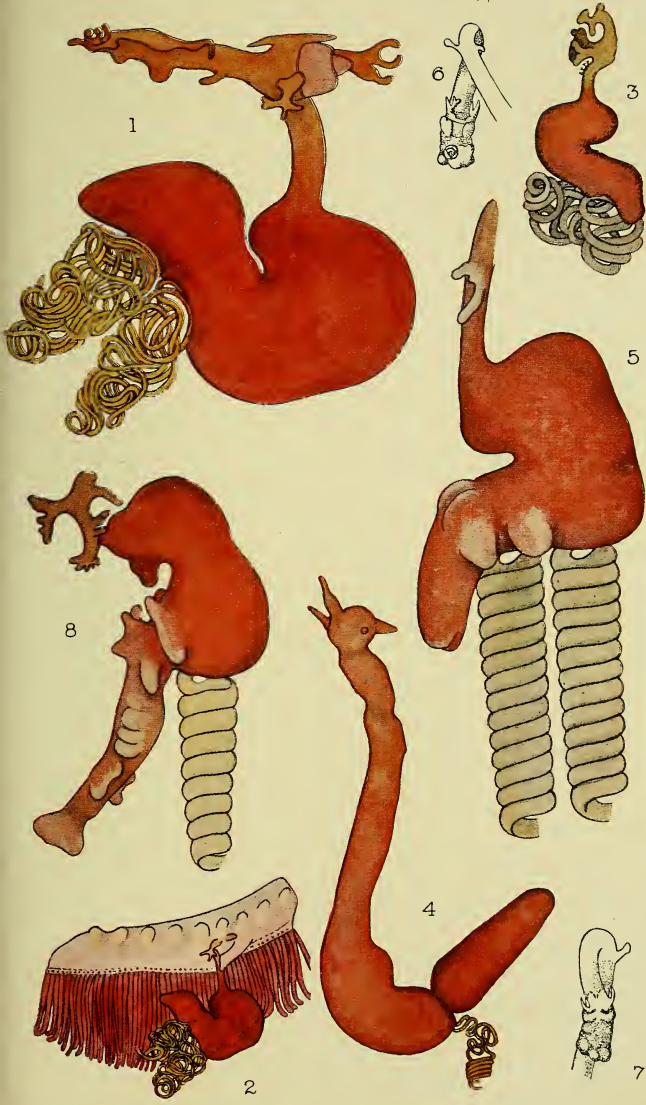


Plate 45

PLATE XLV.

FIGS.

1. *Rebelula edwardsi* (Kolliker), ♀ dorsal view, enlarged.
(p. 162.)
- 2, 3. *Philichthys xiphiæ* Steenstrup, ♀. (p. 139.)
 2. A young specimen, dorsal view, enlarged.
 3. An older specimen, dorsal view, enlarged.
- 4, 5. *Dichelestium oblongum* (Abildgaard). (p. 106.)
 4. Dorsal view, ♀, × about 4.
 5. Dorsal view, ♂, × about 4.
6. *Tripaphylus musteli* P. J. van Beneden, ♂ side view, enlarged. (p. 160.)
7. *Chondracanthus ornatus* T. Scott, ♂ side view, greatly enlarged. (p. 182.)
8. *Brachiella rostrata* Kröyer, ♂ side view, × about 25.
(p. 205.)

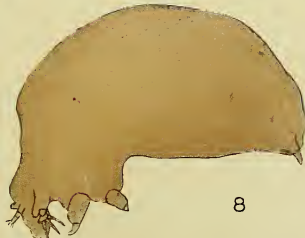
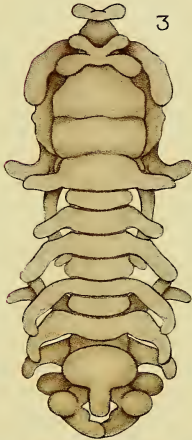


Plate 46

PLATE XLVI.

FIGS.

1-5. *Lernæenicus sprattæ* (Sowerby). (p. 156.)

1. Female *in situ* in eye of sprat, natural size.
2. Female removed from fish, \times about $2\frac{1}{3}$.
3. Head and neck of female, more enlarged.
4. Antennule, greatly enlarged.
5. Antenna, greatly enlarged.

6-9. *Lernæenicus encraticola* (Turton). (p. 158.)

6. Female *in situ* in back of sprat, natural size.
7. Shows head of female penetrating into the abdominal cavity of the sprat, enlarged.
8. Head of female, ventral view, enlarged.
9. Head, side view, enlarged.

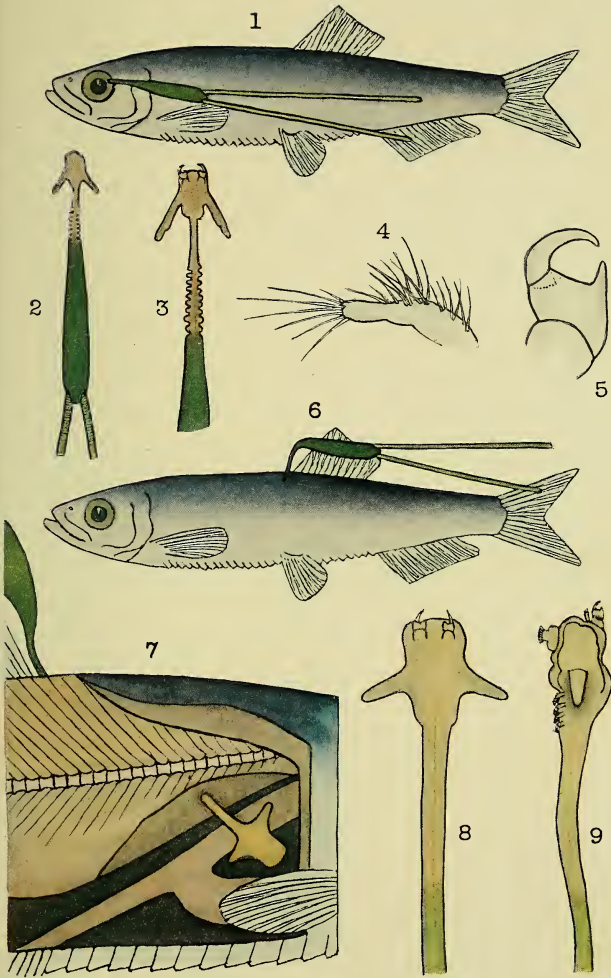


Plate 47

PLATE XLVII.

FIGS.

1. *Chondracanthus cornutus* (O. F. Müller), ♀, × about 6. (p. 168.)
2. *Chondracanthus cornutus*, var. ♀, × 6. (p. 169.)
3. *Chondracanthus annulatus* Olsson, ♀, × 4. (p. 169.)
4. *Chondracanthus soleæ* Kröyer, ♀, × 7. (p. 170.)
5. *Chondracanthus fluræ* Kröyer, ♀, × 6. (p. 171.)
6. *Chondracanthus limandæ* Kröyer, ♀, × 13. (p. 174.)
7. *Chondracanthus clavatus* Bassett-Smith, ♀, × 8. (p. 175.)
8. *Chondracanthus merluccii* (Holten), ♀, × 8. (p. 180.)

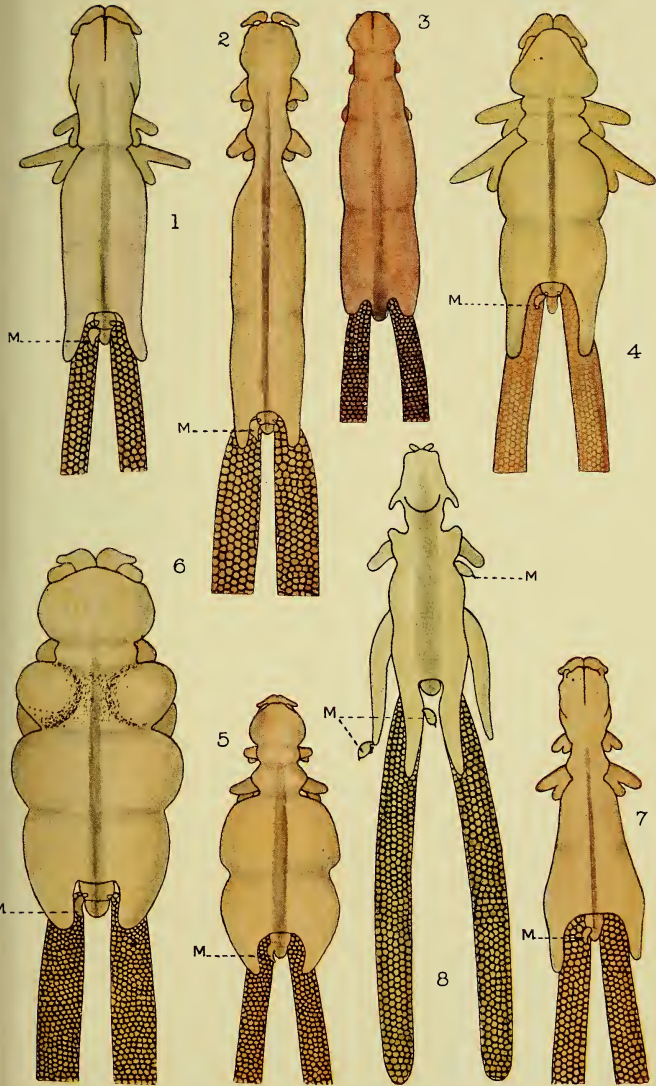


Plate 48

PLATE XLVIII.

FIGS.

- 1-3. *Lepeophtheirus thompsoni* Baird, ♀. (p. 69.)
1. Sternal fork.
2. Sternal fork, another form.
3. Foot of fourth pair.
- 4, 5. *Lepeophtheirus pollachii* Bassett-Smith, ♀. (p. 73.)
4. Sternal fork.
5. First maxilliped.
6. *Caligus brevicaudatus* A. Scott, ♀. Sternal fork.
(p. 56.)
7. *Caligus diaphanus* Nordmann, ♀. Sternal fork.
(p. 60.)
- 8-12. *Lernæopoda salmonea* (Linn.), ♀. (p. 199.)
8. Antennule.
9. Antenna.
10. Mandible.
11. Maxilla.
12. First maxilliped.
- 13-16. *Chondracanthus nodosus* (O. F. Müller), ♀. (p. 176.)
13. Antennule.
14. Mandible and maxilla.
15. Foot of first pair.
16. Foot of second pair.
17. *Ergasilus nanus* P. J. van Beneden, ♀. Antenna.
(p. 34.)
18. *Brachiella insidiosa* Heller, adult male, side view,
× 18. (p. 206.)
- (Figs. 1-17 much enlarged.)

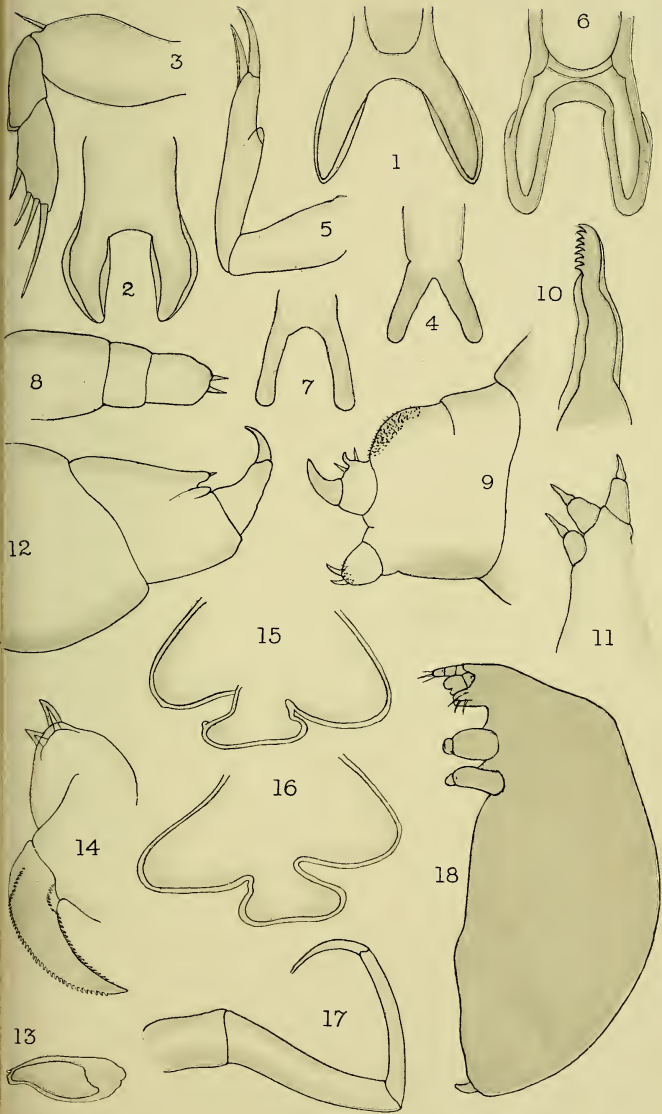


Plate 49

PLATE XLIX.

FIGS.

- 1-7. *Tripaphylus musteli* (P. J. van Beneden), ♂. (p. 160.)
1. Antennule.
2. Antenna.
3. Mandible.
4. Maxilla.
5. First maxilliped.
6. Second maxilliped.
7. Abdomen.
- 8-11. *Thysanote impudica* (Nordmann), ♀. (p. 187.)
8. Antennule.
9. Mandible.
10. Maxilla.
11. First maxilliped.
- 12-16. (?) *Lernæopoda lampri* sp. n., ♂. (p. 202.)
12. Antenna.
13. Mandible.
14. Maxilla.
15. First maxilliped.
16. Second maxilliped.

(Figures much enlarged.)

PLATE XLIX

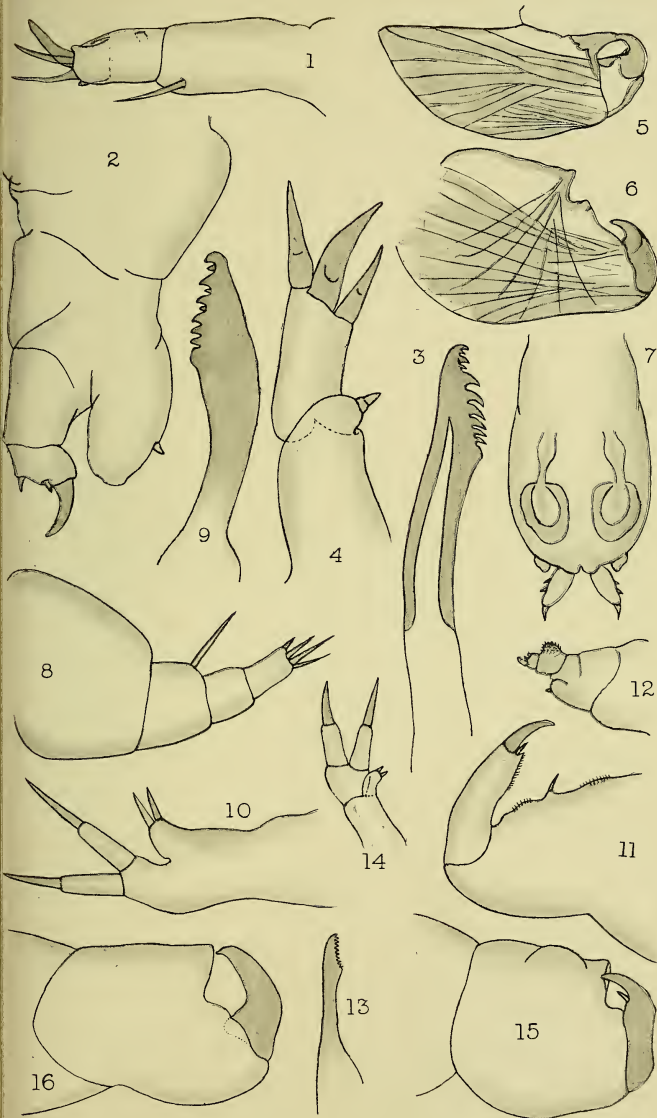


Plate 50

PLATE L.

FIGS.

- 1-5. *Lerneocera cyprinacea* (Linn.), ♀. (p. 154.)
1. A specimen seen from the side, $\times 9$.
2. The head, front view.
3. The head, seen from another position, more enlarged than fig. 2.
4. A specimen of *L. cyprinacea*, $\times 5$. (After Selago.)
5. Another specimen, \times about 3. (After Baird.)
6-8. *Achtheres percarum* Nordmann. (p. 193.)
6. A female, dorsal view, $\times 18$.
7. Distal extremity of second maxillipeds, enlarged.
8. A male, dorsal view, $\times 85$.
9. *Brachiella bispinosa* Nordmann, ♀ dorsal view, $\times 7$. (p. 211.)

(Figs. 1-3 and 6-9 after Nordmann.)

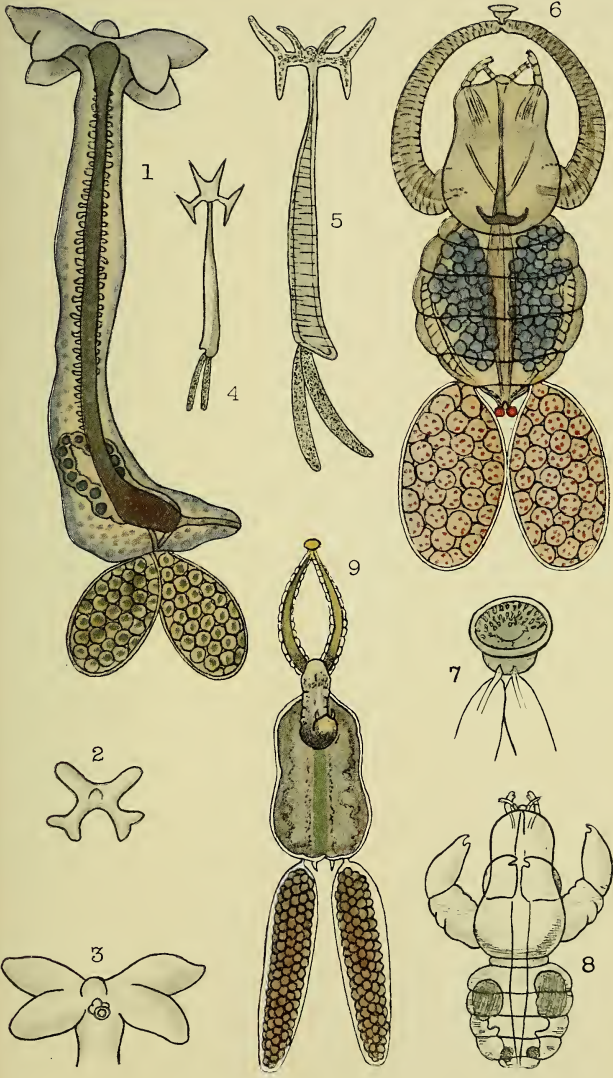


Plate 51

PLATE LI.

FIGS.

1. *Tripaphylus musteli* (P. J. van Beneden), ♀, × 2½ (head wanting). (p. 160.)
2. *Fennella orthagorisci* E. P. Wright, ♀, about natural size (head wanting). (p. 150.) (Thomas Edward's specimen.)
3. *Sphyrion lumpi* (Kröyer), ♀, × about 2. (p. 164.)
4. A smaller specimen, rather imperfect, × about 4.
5. *Rebelula edwardsi* (Kölliker), ♀, × about 2 (head wanting). (p. 162.)
6. *Thersitina gasterostei* (Pagenstecher), ♀, × 27. (p. 42.)
7. *Clavella lophii* (M. Edwards), ♀, × 2. (p. 226.)

(All the figures shew dorsal view.)

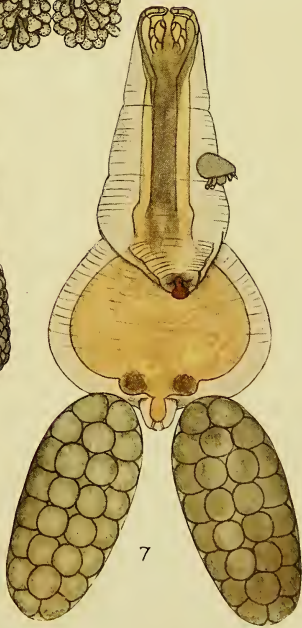
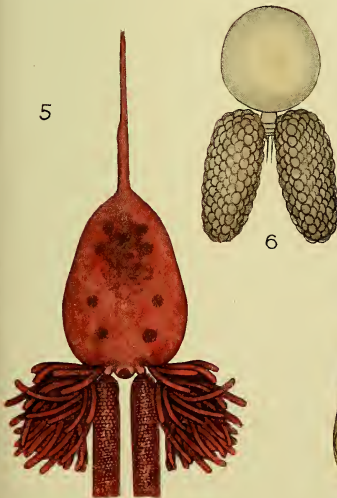
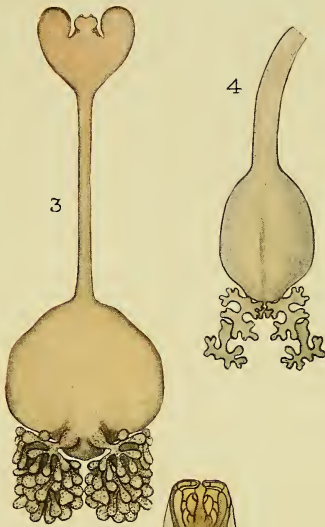
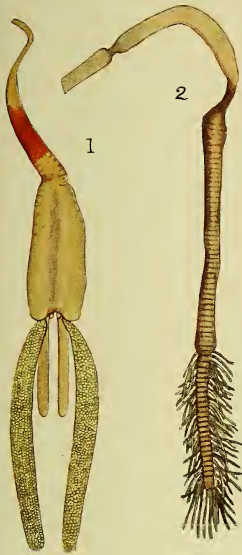


Plate 52

PLATE LII.

FIGS.

- 1-3. *Chondracanthus nodosus* (O. F. Müller). (p. 176.)
 1. Adult female, dorsal view, $\times 8\frac{1}{2}$.
 2. A young specimen, dorsal view, \times about 9.
 3. An adult male, side view, $\times 80$.
4. *Chondracanthus lophii* Johnston, ♀, \times above 5. (p. 179.)
5. *Chondracanthus cornutus* (O. F. Müller), ♂, side view, \times about 100. (p. 168.)
6. *Medesicaste asellinum* (Linn.), ♀ dorsal view, $\times 7\frac{1}{2}$. (p. 184.)

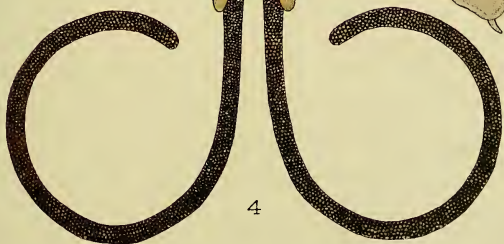
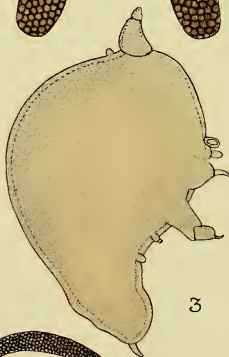
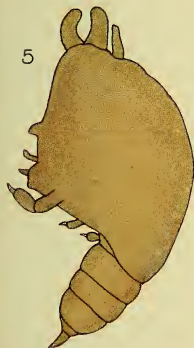
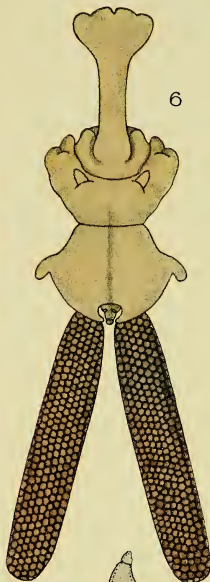


Plate 53

PLATE LIII.

FIGS.

- 1-4. *Chondracanthus cornutus* (O. F. Müller), ♀ & ♂.
(p. 168.)
1. ♀ Antennule.
2. Mandible.
3. ♂ Foot of first pair.
4. Foot of second pair.
- 5-9. *Chondracanthus cornutus*, var., ♀ & ♂. (p. 169.)
5. ♀ Antennule.
6. Mandible.
7. ♂ Antennule.
8. Foot of first pair.
9. Foot of second pair.
- 10, 11. *Chondracanthus fluræ* Kröyer, ♀. (p. 171.)
10. Antennule.
11. Mandible.
- 12-15. *Chondracanthus soleæ* Kröyer, ♀ & ♂. (p. 170.)
12. ♀ Antennule.
13. Mandible.
14. ♂ Antennule.
15. Foot of second pair.
- 16-19. *Chondracanthus merluccii* (Holten), ♀ & ♂. (p. 180.)
16. ♀ Antennule.
17. Mandible.
18. ♂ Foot of first pair.
19. Foot of second pair.

(Figures much enlarged.)

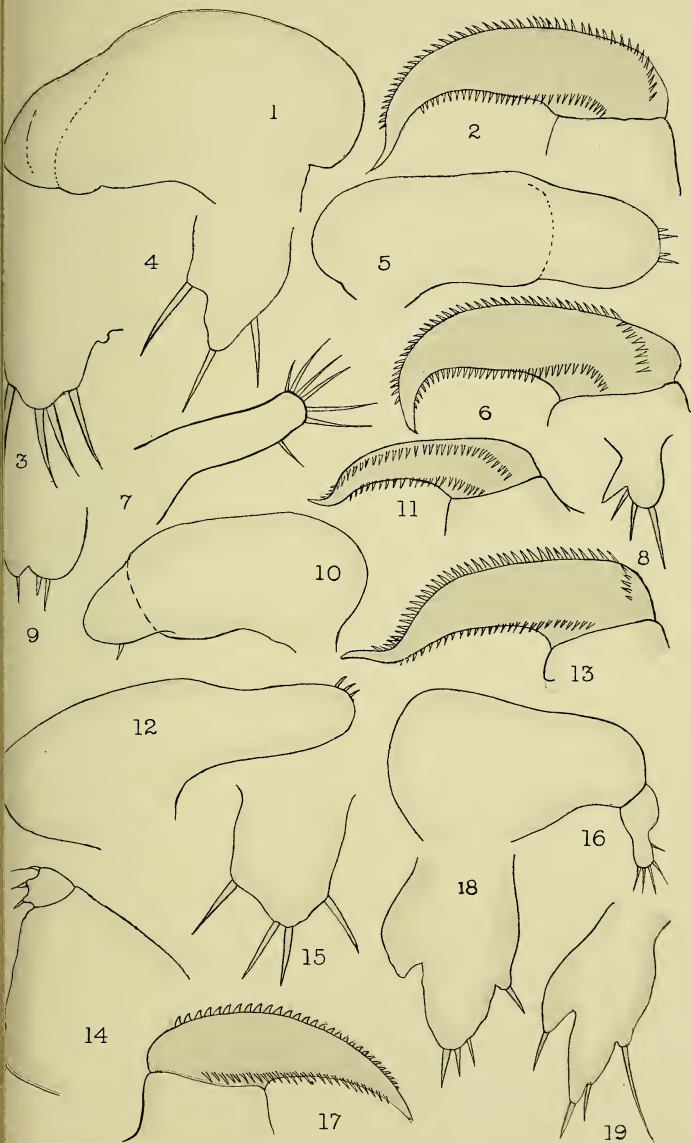


Plate 54

PLATE LIV.

FIGS.

- 1-11. *Trebisius caudatus* Kröyer, ♀. (p. 81.)
1. Antennule.
2. Antenna.
3. Mandible.
4. Maxilla.
5. Sternal fork.
6. First maxilliped.
7. Second maxilliped.
8. Foot of first pair.
9. Foot of second pair.
10. Foot of fourth pair.
11. Fifth foot.
- 12-17. *Charopinus dalmanni* (Retzius), ♀ & ♂. (p. 189.)
12. ♀ Antennule.
13. Antenna.
14. Mandible.
15. Maxilla.
16. First maxilliped.
17. ♂ Second maxilliped.
- 18-22. *Charopinus ramosus* Kröyer, ♀. (p. 191.)
18. Antennule.
19. Antenna.
20. Mandible.
21. Maxilla.
22. First maxilliped.

(Figures much enlarged.)

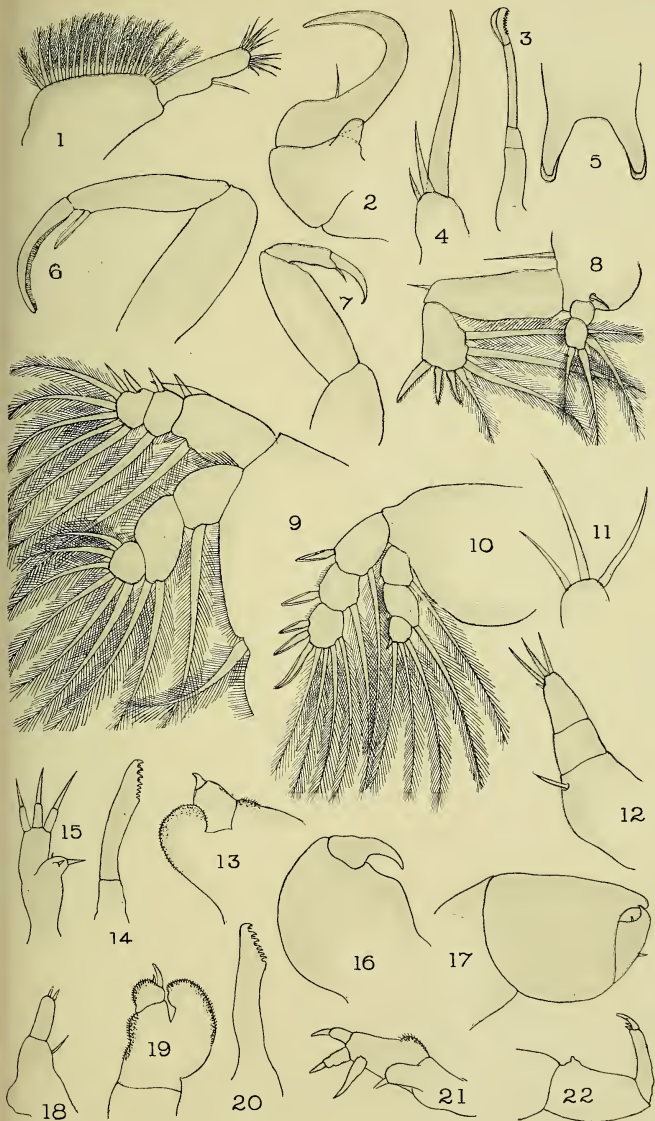


Plate 55

PLATE LV.

FIGS.

- 1-4. *Charopinus dalmanni* (Retzius). (p. 189.)
1. Female, dorsal view, $\times 2$.
2. Female, side view, $\times 2$.
3. Ends of the second maxillipeds, slightly enlarged.
4. Male, side view, $\times 36$.
5. *Charopinus dubius* T. Scott, ♀, dorsal view, $\times 3\frac{1}{2}$.
(p. 190.)
- 6, 7. *Charopinus ramosus* Kröyer, ♀. (p. 191.)
6. Dorsal view, $\times 4$.
7. Side view, $\times 4$.

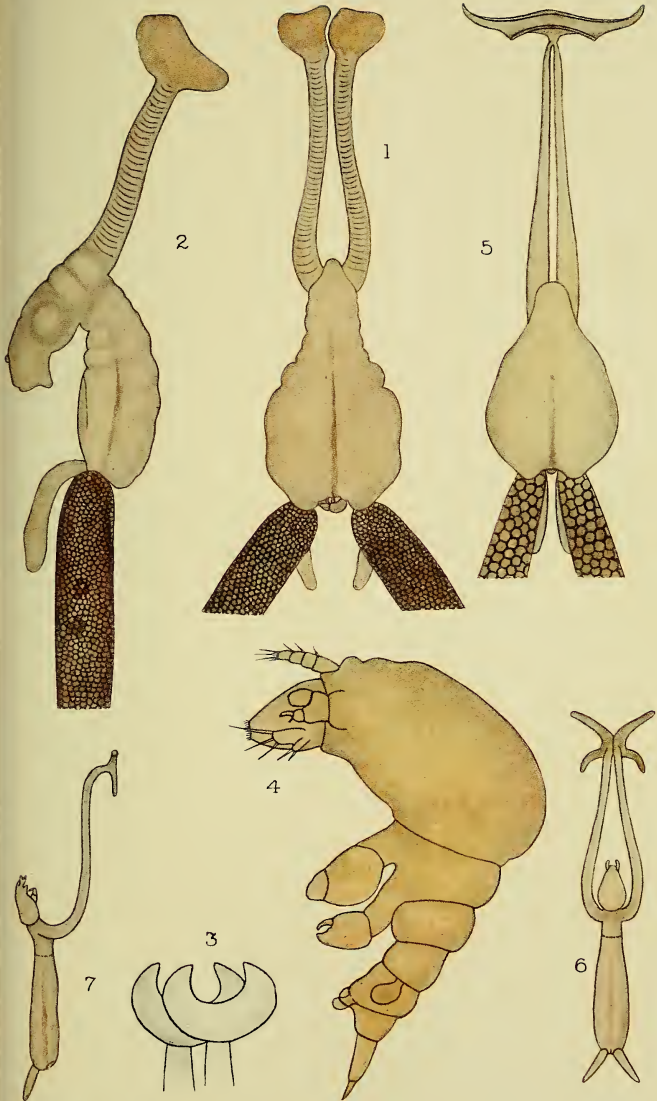


PLATE LVI.

FIGS.

- 1-4. *Chondracanthus depressus* T. Scott, ♀. (p. 172.)
1. Antennule.
2. Mandible.
3. Foot of first pair.
4. Foot of second pair.
- 5-7. *Chondracanthus depressus*, var. *oblongus*, ♀. (p. 173.)
5. Antennule.
6. Foot of first pair.
7. Foot of second pair.
- 8-10. *Chondracanthus annulatus* Olsson, ♀ & ♂. (p. 169.)
8. ♀ Antennule.
9. Mandible.
10. ♂ Antennule.
- 11, 12. *Chondracanthus limandæ* Kröyer, ♀. (p. 174.)
11. Antennule.
12. Mandible.
13. *Chondracanthus zeii* De la Roche, ♀. Antennule.
(p. 177.)
- 14, 15. *Chondracanthus clavatus* Bassett-Smith, ♀. (p. 175.)
14. Antennule.
15. Mandible.
- 16-18. *Chondracanthus lophii* Johnston, ♀. (p. 179.)
16. Antennule.
17. Mandible.
18. Maxilla.

(Figures much enlarged.)

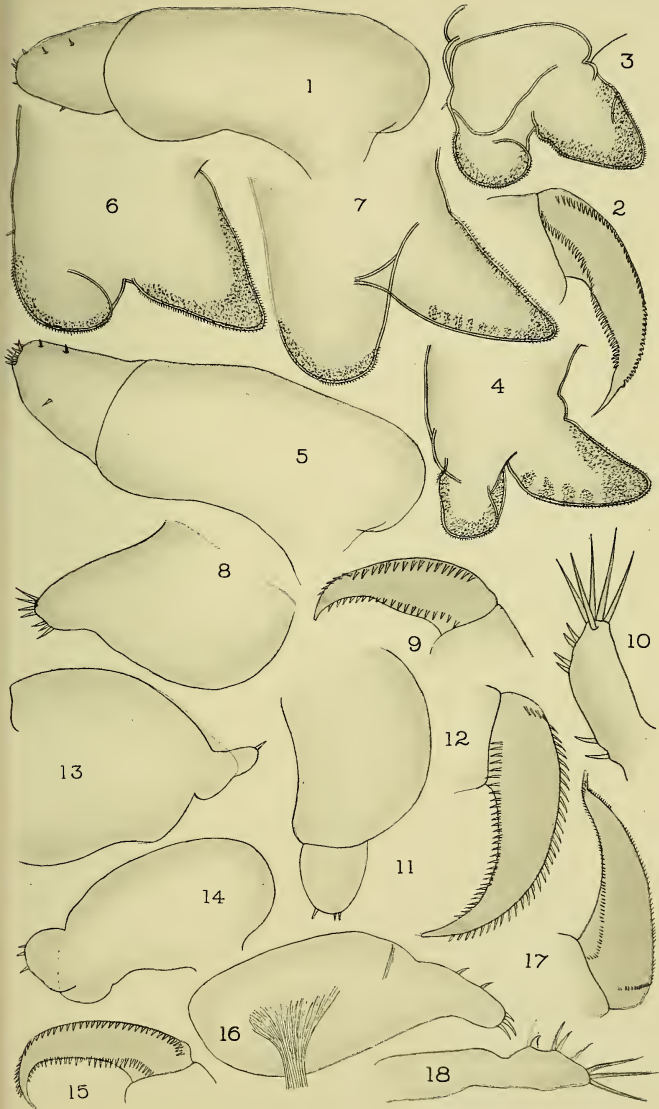


Plate 57

PLATE LVII.

FIGS.

- 1-7. *Lernæopoda cluthæ* T. Scott, ♀ & ♂. (p. 198.)
1. ♀ Antennule.
2. Antenna.
3. Mandible.
4. Maxilla.
5. First maxilliped.
6. ♂ First maxilliped.
7. Second maxilliped.
- 8-12. *Lernæopoda bidiscalis* W. F. de Visme Kane, ♀.
(p. 200.)
8. Antennule.
9. Antenna.
10. Mandible.
11. Maxilla.
12. First maxilliped.
- 13-17. *Lernæopoda elongata* (Grant), ♀. (p. 195.)
13. Antennule.
14. Antenna.
15. Mandible.
16. Maxilla.
17. First maxilliped.
- 18, 19. *Medesicaste usellinum* (Linn.), ♀. (p. 184.)
18. Antennule.
19. Mandible.

(Figures much enlarged.)

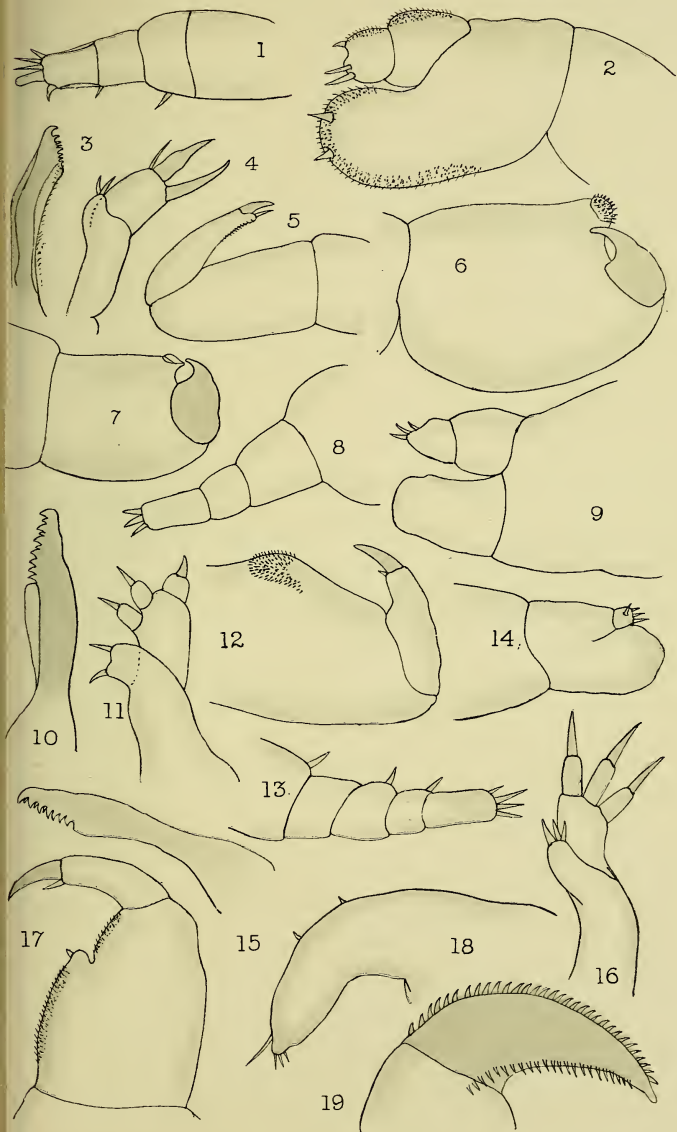


Plate 58

PLATE LVIII.

FIGS.

- 1-8. *Pandarus bicolor* Leach, ♂ (juv.), (= *Nogagus latus*
T. Scott). (p. 95.)
1. Antennule.
2. Antenna.
3. First maxilliped.
4. Second maxilliped.
5. Foot of first pair.
6. Foot of second pair.
7. Foot of third pair.
8. Foot of fourth pair.
- 9-15. *Lernæopoda galei* Kröyer, ♀ & ♂. (p. 197.)
9. ♀ Antennule.
10. Antenna.
11. Mandible.
12. Maxilla.
13. ~~First~~ maxilliped. ♀
14. ~~Second~~ maxilliped. ♂
15. ♂ Second maxilliped. ~~♂~~ *ae.*
16. *Lernæopoda cluthæ* T. Scott, ♂. (p. 198.)
16. Abdomen and caudal furca.

(Figures much enlarged.)

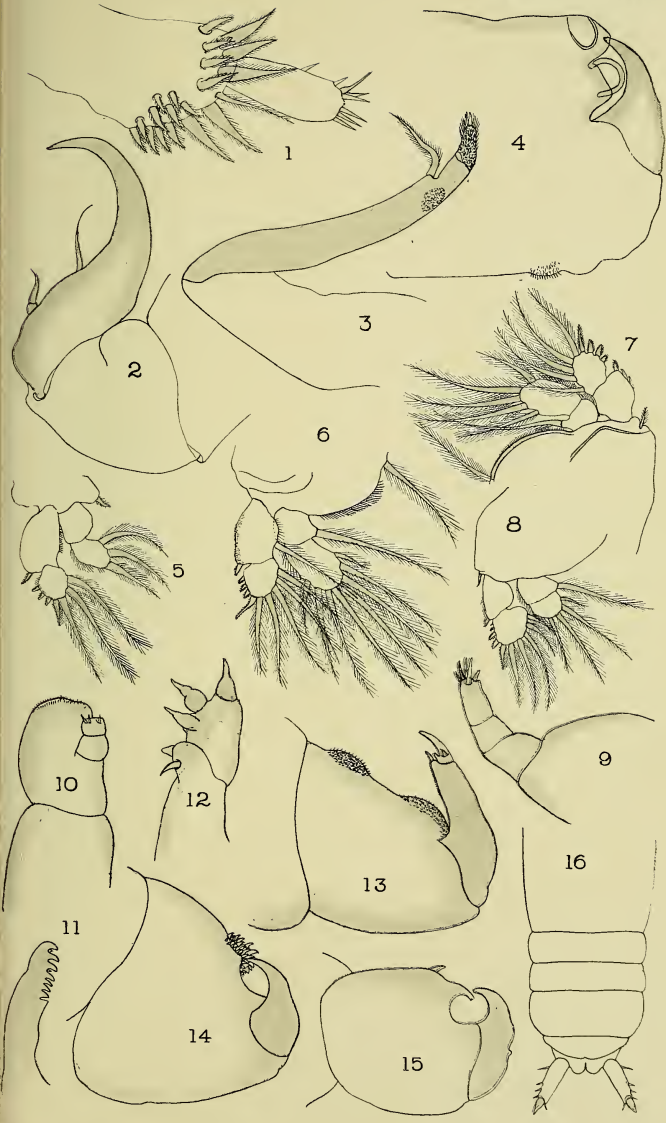


PLATE LIX.

FIGS.

1-6. *Lernæopoda salmonea* (Linn.). (p. 199.)

1. Female, dorsal view, $\times 12$.

2. The same, side view, $\times 12$.

3. Another specimen, ♀ adult, dorsal view, $\times 8$ (to shew variation).

4. The same, seen from the side, $\times 8$.

5. A female, somewhat immature, dorsal view, enlarged.

6. The same, seen from the side, enlarged.

7, 8. *Achtheres percarum* Nordmann, ♀. (p. 193.)

7. Dorsal view, much enlarged.

8. The same, seen from the side.

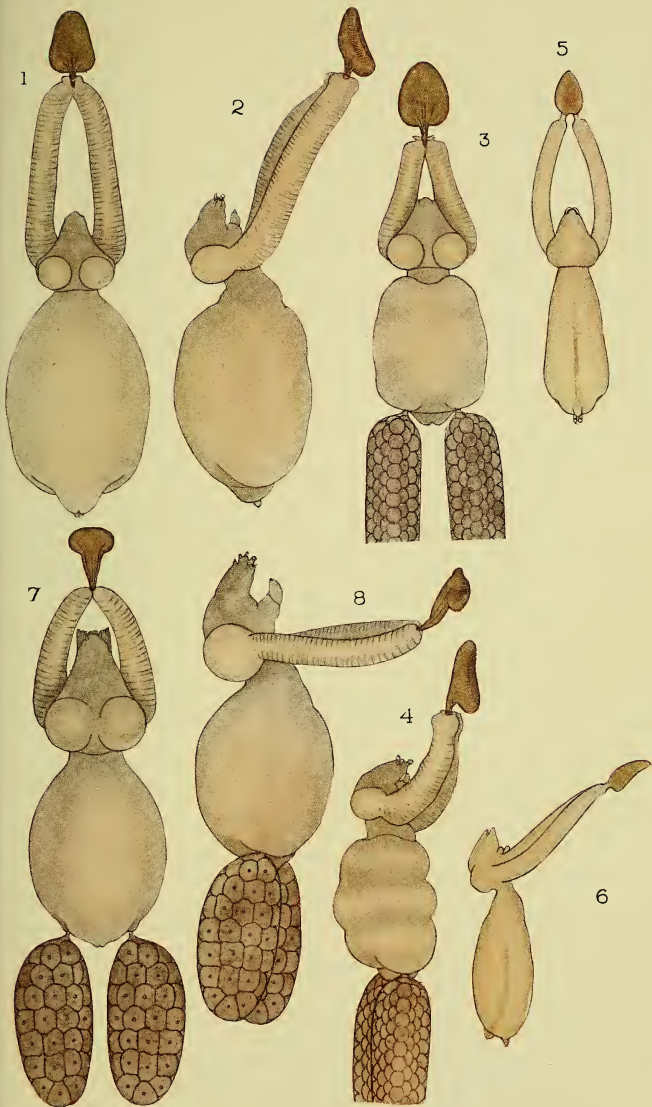


Plate 60

PLATE LX.

FIGS.

- 1-3. *Lernæopoda cluthæ* T. Scott. (p. 198.)
 1. Female, dorsal view, \times 8.
 2. The same, seen from the side, \times 8.
 3. Male, seen from the side, \times about 50.
- 4-6. *Lernæopoda galei* Kröyer. (p. 197.)
 4. Female dorsal view, \times 4.
 5. The same, seen from the side, \times 4.
 6. Male, seen from the side, \times about 50.
7. *Brachiella ovalis* (Kröyer), seen partly from the side,
 \times about 12. (p. 210.)

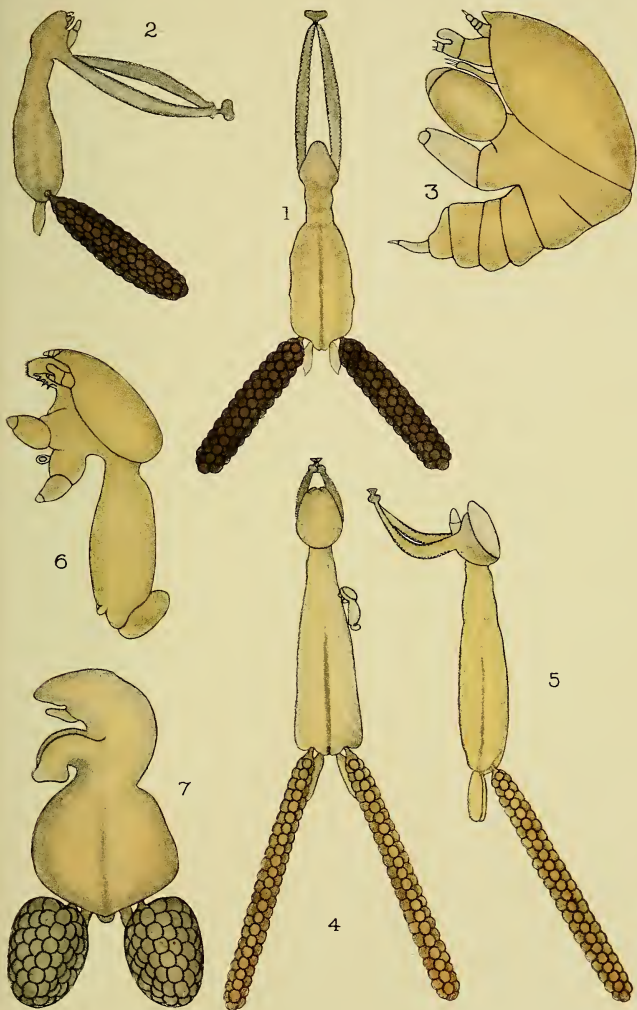


Plate 61

PLATE LXI.

FIGS.

- 1, 2. *Lernæopoda bidiscalis* W. F. de Visme Kane. (p. 200.)
 1. Female, dorsal view, \times about 6.
 2. The same, seen from the side, \times about 6.
- 3, 4. *Lernæopoda elongata* (Grant). (p. 195.)
 3. Female, dorsal view, \times 2·3.
 4. The same, seen from the side, \times 2·3.
- 5, 6. *Lernæopoda similis* sp. n. (p. 202.)
 5. Female, dorsal view, \times 10½.
 6. The same, seen from the side, \times 10½.

Note.—Vol. I, p. 195, for Plate LXI, figs. 5, 6; read figs. 3, 4; and page 202, for Plate LXI, figs. 3, 4; read figs. 5, 6.

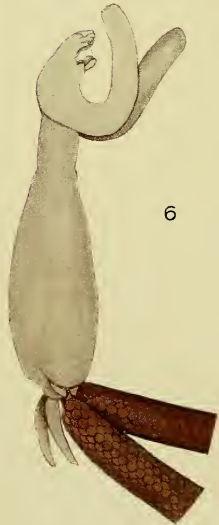
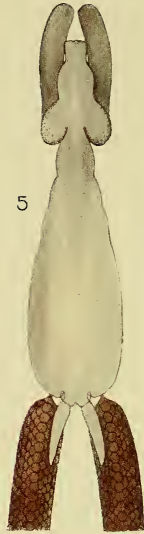
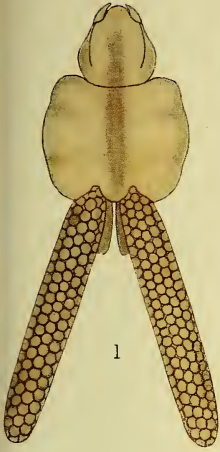


Plate 62

PLATE LXII.

FIGS.

1. *Brachiella trigla* Claus, ♀, ventral aspect, × 20.
(p. 209.)
2. *Brachiella insidiosa* Heller, ♀, side view, × 5.
(p. 206.)
3. *Brachiella rostrata* Kröyer, ♀, side view, × 5. (p. 205.)
- 4, 5. *Brachiella merluccii* Bassett-Smith, ♀, × 6. (p. 207.)
 4. Dorsal view.
 5. Side view.

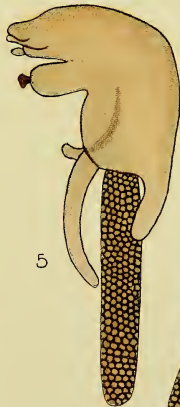
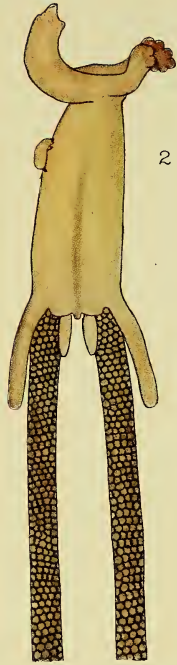
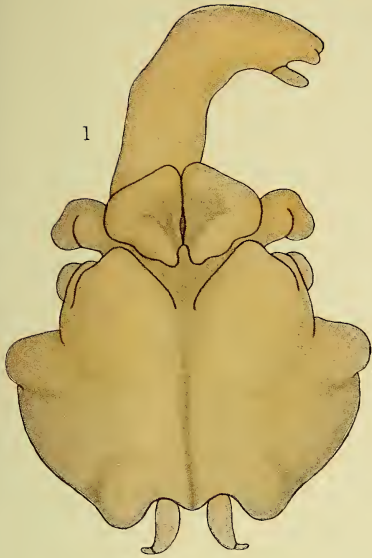




Plate 63

PLATE LXIII.

FIGS.

1. *Lernæopoda galei* Kröyer, ♂, abdomen and caudal furca, × 26. (p. 197.)
- 2-8. *Brachiella rostrata* Kröyer, ♀ & ♂. (p. 205.)
 2. ♀ Antennule.
 3. Antenna.
 4. Mandible.
 5. Maxilla.
 6. First maxilliped.
 7. ♂ First maxilliped.
 8. Second maxilliped.
- 9-16. *Brachiella insidiosa* Heller, ♀ & ♂. (p. 206.)
 9. ♀ Antennule.
 10. Antenna.
 11. Mandible.
 12. Maxilla.
 13. First maxilliped.
 14. ♂ Antenna.
 15. First maxilliped.
 16. Second maxilliped.
- 17-20. *Brachiella merluccii* Bassett-Smith, ♀. (p. 207.)
 17. Antennule.
 18. Mandible.
 19. Maxilla.
 20. First maxilliped.
- 21-25. *Brachiella triglæ* Claus, ♀. (p. 209.)
 21. Antennule.
 22. Antenna.
 23. Mandible.
 24. Maxilla.
 25. First maxilliped.
- 26-30. *Brachiella ovalis* (Kröyer), ♀. (p. 210.)
 26. Antennule.
 27. Antenna.
 28. Mandible.
 29. Maxilla.
 30. First maxilliped.

(Figures much enlarged.)

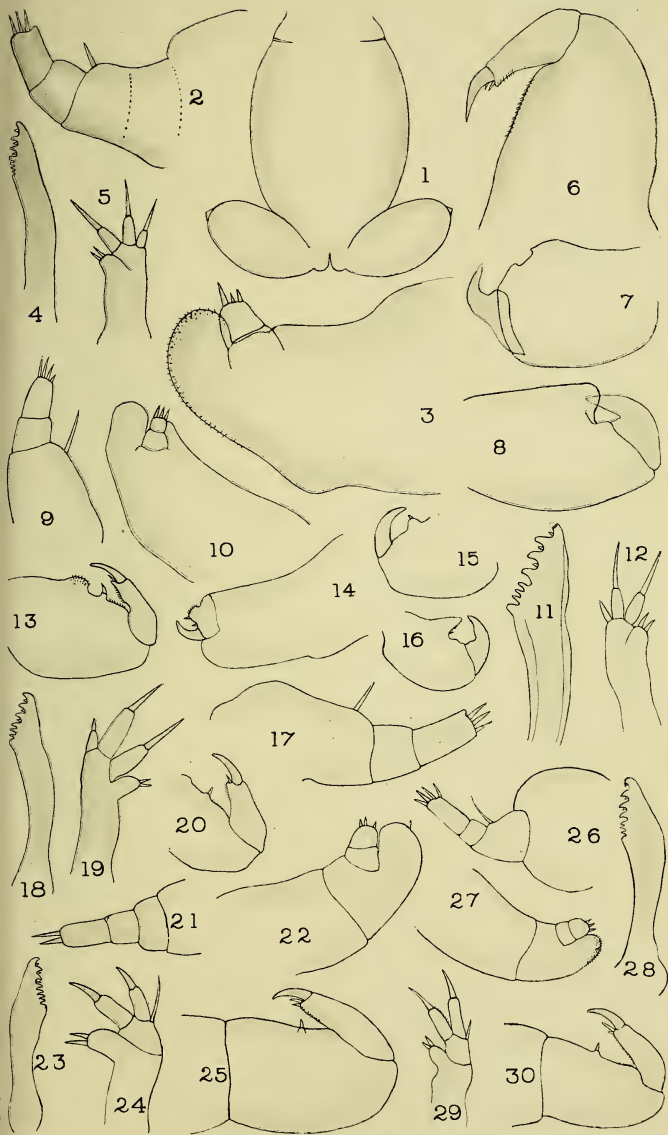


Plate 64

PLATE LXIV.

FIGS.

- 1-3. *Achtheres percarum* Nordmann, ♀. (p. 193.)
1. Anterior end, ventral aspect, shewing mouth-
appendages.
2. First maxillipeds, side view.
3. Second maxilliped, side view.
- 4-6. *Brachiella thynni* Cuvier. (p. 204.)
4. Male, seen from the side, $\times 30$.
5. Female, scarcely mature, head wanting, slightly
enlarged.
6. Female, adult, \times about 3.
7. *Brachiella parkeri* G. M. Thomson, ♀, $\times 3\frac{1}{2}$. (p. 212.)
8. *Brachiella pastinacæ* P. J. van Beneden, ♀, $\times 10$.
(p. 211.)
9. *Brachiella bispinosa* Nordmann, ♀, $\times 7$, side view;
after Nordmann. (p. 211.)

(Figs. 1-3 and 9 after Nordmann; 4-6 after Steenstrup
& Lütken; 7 and 8 after Miss Bainbridge.)

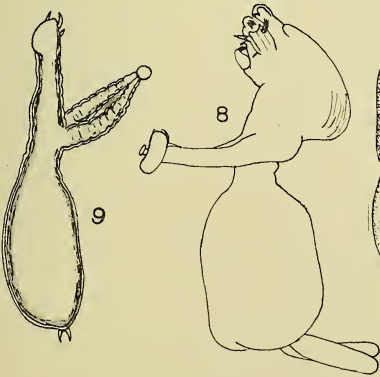
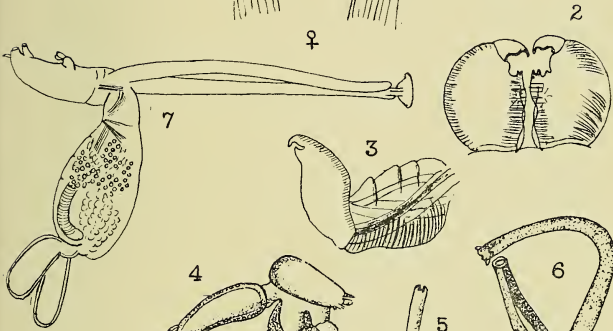
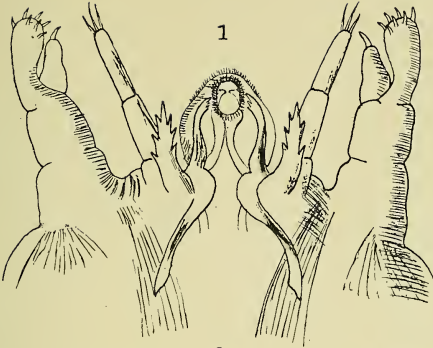


Plate 65

PLATE LXV.

FIGS.

1. *Clavella brevicollis* (M. Edwards), ♀, side view, × about 20. (p. 220.)
- 2, 3. *Clavella uncinata* (O. F. Müller). (p. 214.)
 2. ♀, Side view, × about 7.
 3. ♂, Side view, × about 45.
4. *Clavella rugosa* (Kröyer), ♀, side view, × $4\frac{1}{2}$. (p. 216.)

A male is shewn attached to the cephalothorax.
5. *Clavella rugosa* (Kröyer), ♂, side view, × about 40.
6. *Clavella* (?) *uncinata*, ♀ (juv.), with two males attached to the abdomen, enlarged. (p. 214.)
7. *Clavella dubia*, T. & A. Scott, ♀, side view, × 7. (p. 217.)
- 8, 9. *Clavella stellata* (Kröyer), ♀. (p. 220.)
 8. Side view, shewing a section of the scale of the fish to which the adhesive disk of the *Clavella* is attached, × $4\frac{1}{2}$.
 9. Adhesive disk, enlarged.





Plate 66

PLATE LXVI.

FIGS.

- 1-7. *Clavella rugosa* (Kröyer), ♀ & ♂. (p. 216.)
1. ♀ Antennule.
2. Antenna.
3. Mandible.
4. Maxilla.
5. First maxilliped.
6. ♂ First maxilliped.
7. Second maxilliped.
- 8-11. *Clavella dubia* T. & A. Scott, ♀. (p. 217.)
8. Antennule.
9. Mandible.
10. Maxilla.
11. First maxilliped.
- 12-16. *Clavella brevicollis* (M. Edwards), ♀. (p. 220.)
12. Antennule.
13. Antenna.
14. Mandible.
15. Maxilla.
16. First maxilliped.
- 17-20. *Clavella emarginata* (Kröyer), ♀. (p. 218.)
17. Antennule.
18. Mandible.
19. Maxilla.
20. First maxilliped.
- 21-23. *Clavella uncinata* (O. F. Müller), ♀. (p. 214.)
21. Antennule.
22. Maxilla.
23. First maxilliped.

(Figures much enlarged.)

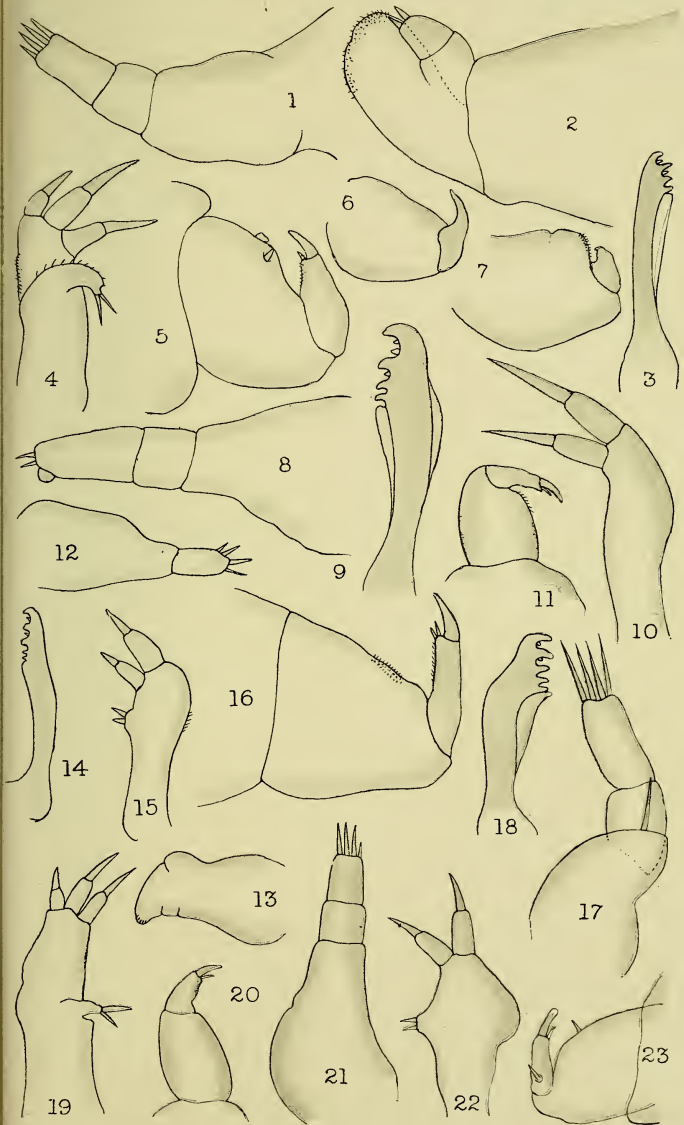


Plate 67

PLATE LXVII.

FIGS.

1-3. *Clavella scombri* (Kurz). (p. 218.)

1. Female, side view, \times 12. A male is shewn attached to the cephalothorax.

2. Female, *in situ* on gill-arch of fish, \times about 4.

3. Male, side view, \times 56.

4-6. *Clavella paradoxa* (P. J. van Beneden). (p. 222.)

4. Female, dorsal view, \times about 20.

5. Female, *in situ* on gill-filament of fish, \times 5.

6. Male, side view, \times 25.

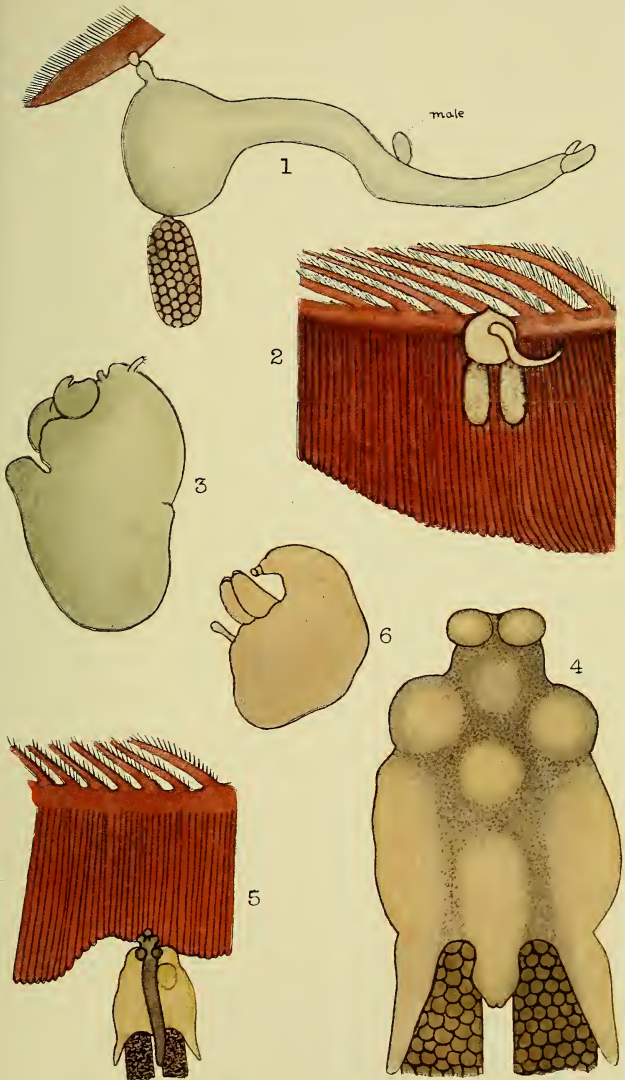




Plate 68

PLATE LXVIII.

FIGS.

- 1-7. *Clavella scombri* (Kurz), ♀ & ♂. (p. 218.)
1. ♀ Antennule.
 2. Antenna.
 3. Mandible, apex shewing serrated edge.
 4. Maxilla.
 5. First maxilliped.
 6. ♂ First maxilliped.
 7. Second maxilliped.
- 8-14. *Clavella paradoxa* (P. J. van Beneden), ♀ & ♂. (p. 222.)
8. ♀ Antennule.
 9. Antenna.
 10. Mandible, apex shewing serrated edge.
 11. Maxilla.
 12. First maxilliped.
 13. ♂ First maxilliped.
 14. Second maxilliped.
15. *Clavella quadrata* Bassett-Smith, ♀, enlarged (after Bassett-Smith). (p. 223.)
- (Figures much enlarged.)

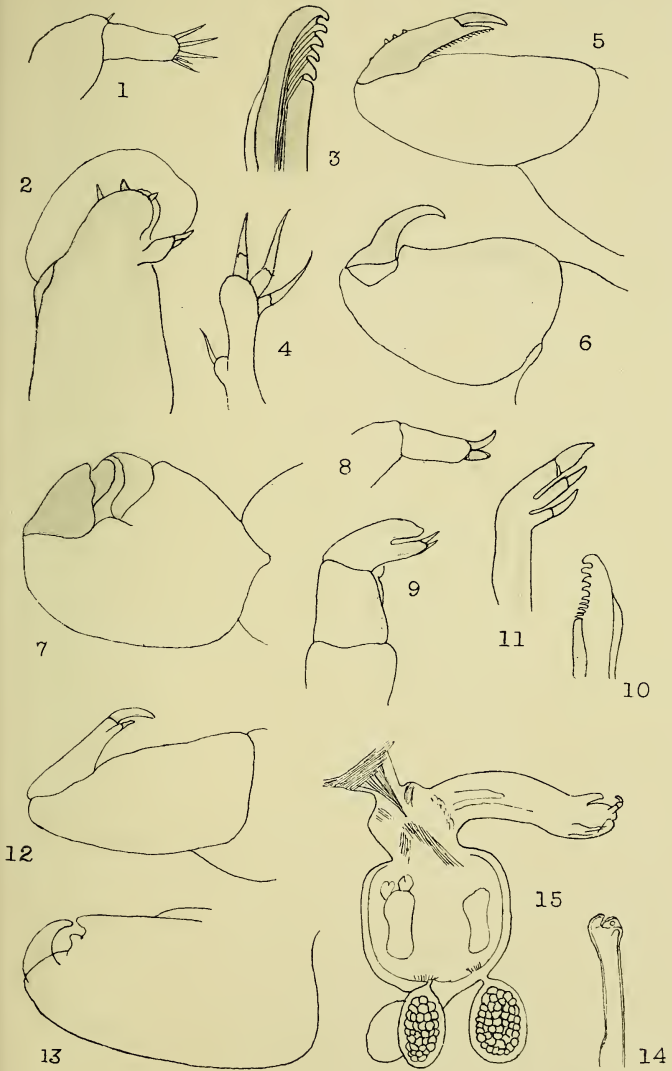


Plate 69

PLATE LXIX.

FIGS.

- 1-3. *Clavella canthari* (Heller). (p. 224.)
 1. Female, dorsal view, $\times 9.3$.
 2. The same, seen from the side, $\times 9.3$.
 3. Male, seen from the side, \times about 50.
- 4-6. *Clavella alata* Brian. (p. 225.)
 4. Female, dorsal view, $\times 15$.
 5. The same, seen from the side, $\times 15$.
 6. Male, seen from the side, \times about 50.
7. *Clavella emarginata* (Kröyer) ♀, side view, \times about 13. (p. 218.)

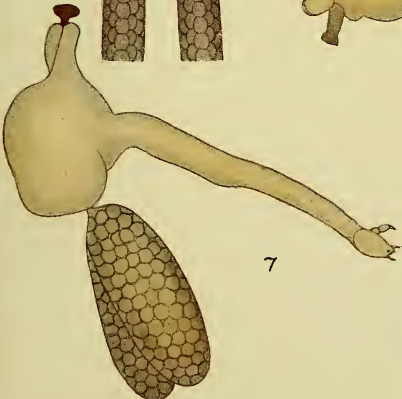
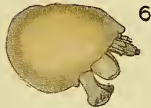
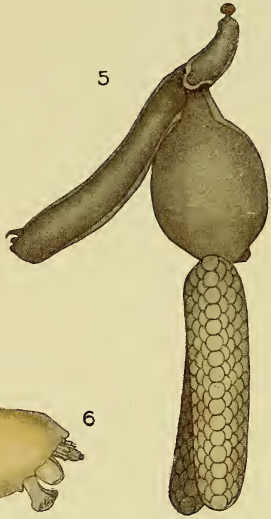
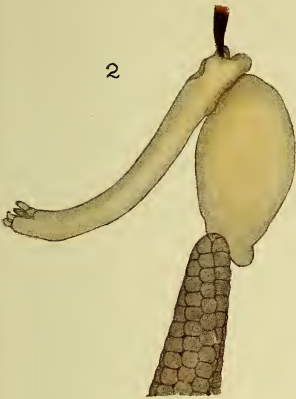


Plate 70

PLATE LXX.

FIGS.

- 1-13. *Kroyeria lineata* P. J. van Beneden. (p. 121.)
1. Female, dorsal view, \times about 24.
 2. Antennule.
 3. Antenna.
 4. Mandible.
 5. Maxilla.
 6. First maxilliped.
 7. Second maxilliped.
 8. Foot of first pair.
 9. Foot of second pair.
 10. Part of genital segment, and abdomen seen from the side.
 11. One of the cephalic spines.
 12. Male, dorsal view, \times about 24.
 13. One of the cephalic spines.

(Figures 2-11 and 13 greatly enlarged.)

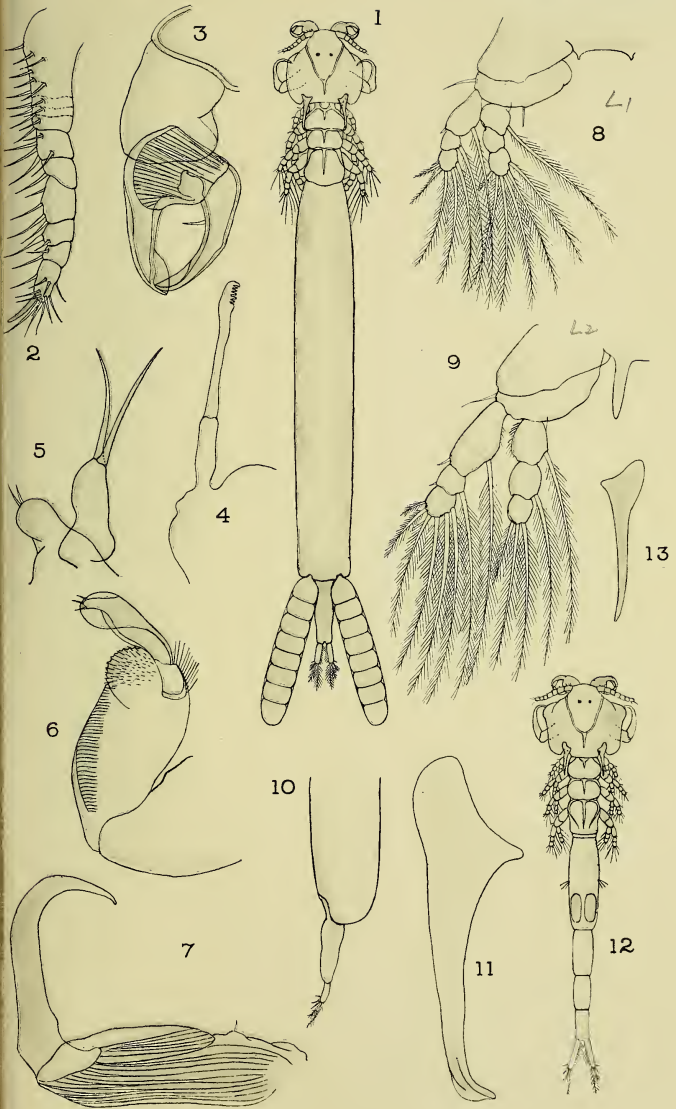


Plate 71

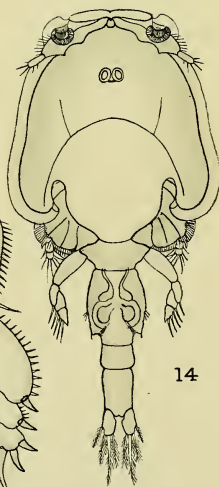
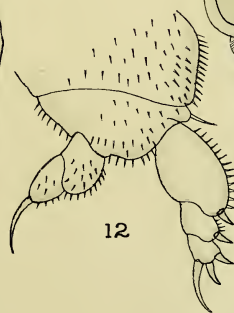
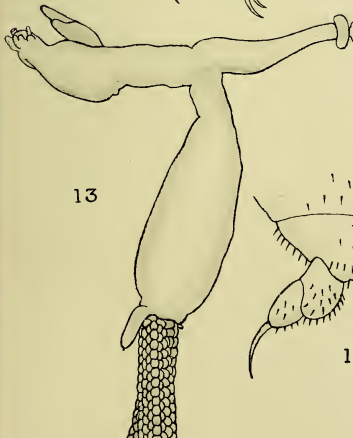
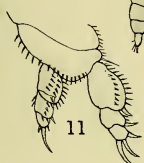
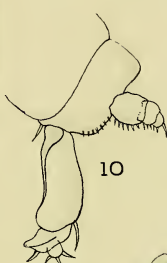
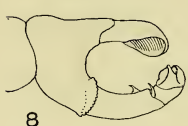
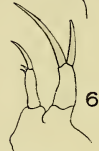
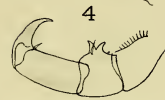
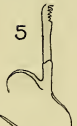
PLATE LXXI.

FIGS.

- 1-12. *Eudactylina insolens* sp. n., ♀. (p. 135.)
 1. Dorsal view, × 50.
 2. Side view, × 50.
 3. Antennule.
 4. Antenna.
 5. Mandible.
 6. Maxilla.
 7. First maxilliped.
 8. Second maxilliped.
 9. Foot of first pair.
 10. Foot of second pair.
 11. Foot of third pair.
 12. Foot of fourth pair.
13. *Brachiella pastinaca* P. J. van Beneden, ♀, side view, × 10. (p. 211.)
14. *Caligus pelamydis* Kröyer, ♂, dorsal view, × 24. (p. 58.)

(Figures 3-12 greatly enlarged.)

Note.—Fig. 13 is not referred to in the text, as the specimen was only recently obtained.



13

12

14

1

2

3

5

4

6

8

7

10

9

11

PLATE LXXII.

FIGS.

- 1-10. *Argulus foliaceus* (Linn.), ♀. (p. 227.)
1. Female, dorsal view, enlarged about $6\frac{1}{2}$ times.
 2. Antenna.
 3. Antennule.
 4. Mouth, side view.
 5. Siphon with retractile stylet.
 6. Second maxilliped.
 7. First swimming foot.
 8. Basiopodite of second foot.
 9. Basiopodite of third foot.
 10. Basiopodite of fourth foot.

(Figures 2-10 much enlarged.)



RAY SOCIETY

INSTITUTED 1844

FOR THE PUBLICATION OF WORKS ON
NATURAL HISTORY

ANNUAL SUBSCRIPTION ONE GUINEA

OFFICERS AND COUNCIL.

1913-14.

President.

THE RT. HON. LORD AVEBURY, P.C., D.C.L., LL.D., FOR.SEC.R.A.,
F.R.S., F.S.A., F.L.S., ETC.

Vice-Presidents.

T. A. CHAPMAN, M.D., F.Z.S., F.E.S.
A. D. MICHAEL, F.L.S., F.Z.S., F.R.M.S.
R. F. SCHARFF, PH.D., B.Sc., F.L.S., F.Z.S.

Council.

ROBERT ADKIN, F.E.S.	B. DAYDON JACKSON, PH.D., F.L.S.
R. ASSHETON, M.A., F.L.S., F.G.S.	ALBERT H. JONES, Treas.E.S.
MALCOLM BURE, D.Sc., F.L.S., F.G.S.	G. B. LONGSTAFF, M.D., F.E.S.
Rev. C. R. N. BURROWS, F.E.S.	A. W. OKE, B.A., LL.M., F.L.S., F.G.S.
Rev. ALFRED FULLER, M.A., F.E.S.	CHARLES OLDHAM, F.L.S., F.Z.S.
A. E. GIBBS, F.L.S., F.Z.S., F.E.S.	C. D. SOAR, F.L.S., F.R.M.S.
S. F. HARMER, M.A., Sc.D., F.R.S.	W. MARK WEBB, F.L.S., F.R.M.S.

Treasurer.

F. DUCANE GODMAN, D.C.L., F.R.S., F.L.S., F.G.S., F.Z.S., F.E.S.

Secretary.

JOHN HOPKINSON, F.L.S., F.G.S., F.Z.S., Assoc.Inst.C.E.;
Weetwood, Watford.

RECENTLY ISSUED AND FORTHCOMING
MONOGRAPHS.

For the Sixty-first Year, 1904.

82. A Monograph of the British Desmidiaceæ. By W. and G. S. WEST. Vol. I. xxxvi + 224 + 64 pp., 32 plates. 8vo. 1904.

83. The British Tunicata. By the late JOSHUA ALDER and the late ALBANY HANCOCK. Edited by JOHN HOPKINSON. Vol. I. With a History of the Work by Canon A. M. NORMAN. xvi + 146 + 42 pp., 20 plates, and frontispiece. 8vo. 1905.

For the Sixty-second Year, 1905.

84. A Monograph of the British Desmidiaceæ. By W. and G. S. WEST. Vol. II. x + 206 + 64 pp., 32 plates. 8vo. 1905.

85. The British Freshwater Rhizopoda and Heliozoa. By JAMES CASH, assisted by JOHN HOPKINSON. Vol. I. The Rhizopoda, Part I. x + 150 + 32 pp., 16 plates. 8vo. 1905.

For the Sixty-third Year, 1906.

86. The British Tunicata. By the late JOSHUA ALDER and the late ALBANY HANCOCK. Edited by JOHN HOPKINSON. Vol. II. With Lives of the Authors by Canon Norman and Dennis Embleton. xxviii + 164 + 62 pp., 30 plates (xxi-l), and frontispiece. 8vo. 1907.

For the Sixty-fourth Year, 1907.

87. A Monograph of the British Annelids. By WILLIAM CARMICHAEL McINTOSH. Vol. II, Part 1. Polychæta. Nephthydidæ to Syllidæ. viii + 232 + 46 pp., 22 plates (xliii-l, lvii-lxx). Folio. 1908.

For the Sixty-fifth Year, 1908.

88. A Monograph of the British Desmidiaceæ. By W. and G. S. WEST. Vol. III. xvi + 274 + 62 pp., 31 plates (lxv-xcv). 8vo. 1908.

89. The British Freshwater Rhizopoda and Heliozoa. By the late JAMES CASH, assisted by JOHN HOPKINSON. Vol. II. The Rhizopoda, Part II. xviii + 168 + 32 pp., 16 plates (xvii-xxxii), and frontispiece. 8vo. 1909.

For the Sixty-sixth Year, 1909.

90. The British Nudibranchiate Mollusca. By the late JOSHUA ALDER and the late ALBANY HANCOCK. Part 8 (supplementary). Text by Sir CHARLES ELIOT. viii + 198 + 18 pp., 8 plates. Folio. 1910.

For the Sixty-seventh Year, 1910.

91. The British Annelids. By WILLIAM CARMICHAEL McINTOSH. Vol. II, Part 2. Polychæta (*continued*). vii + 292 (233-524) + 46 pp., 23 plates (li-lvi, lxxi-lxxxvii). Folio. 1910.

For the Sixty-eighth Year, 1911.

92. The British Desmidiaceæ. By W. and G. S. WEST. Vol. IV. xiv + 194 + 66 pp., 33 plates (xcvi-cxxviii). 8vo. 1912.

93. The British Tunicata. By the late JOSHUA ALDER and the late ALBANY HANCOCK. Edited by JOHN HOPKINSON. Vol. III. xii + 114 + 34 pp., 16 plates (li-lxvi), and frontispiece. 8vo. 1912.

For the Sixty-ninth Year, 1912.

94. A Bibliography of the Tunicata. By JOHN HOPKINSON. xii + 288 pp. 8vo. 1913.

95. The British Parasitic Copepoda. By THOMAS and ANDREW SCOTT. Vol. I (Copepoda parasitic on Fishes, Part I). xii + 256 pp., 2 plates. 8vo. 1913.

For the Seventieth Year, 1913.

96. The British Parasitic Copepoda. By THOMAS and ANDREW SCOTT. Vol. II (Copepoda parasitic on Fishes, Part II). xii + 144 pp., 72 plates. 8vo. 1913.

In Course of Publication.

The British Desmidiaceæ. By W. WEST and Prof. G. S. WEST. (Vol. V for 1914.)

The British Freshwater Rhizopoda and Heliozoa. By the late JAMES CASH and G. H. WAILES. (Vol. III for 1914.)

The British Marine Annelids. By Prof. W. C. McINTOSH.

Preparing for Publication.

The British Centipedes and Millepedes. By W. M. WEBB.

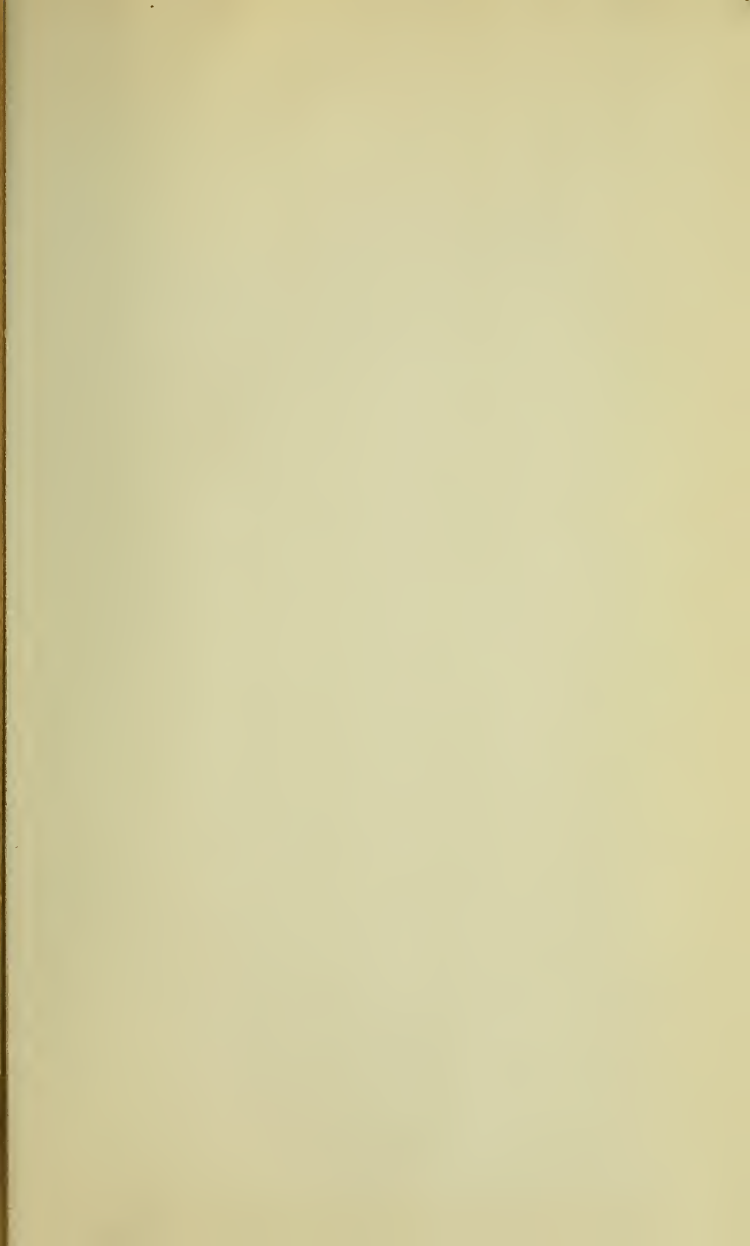
The British Earthworms. By the Rev. HILDERIC FRIEND.

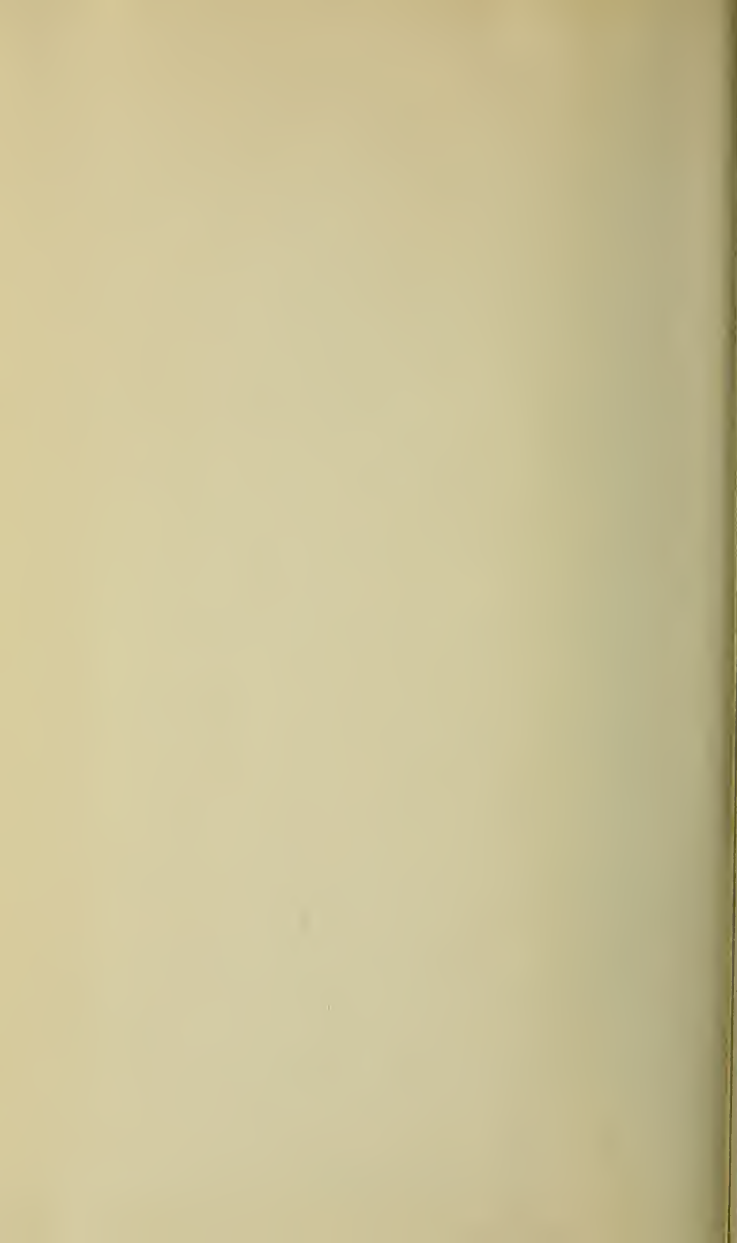
The British Hydrachnidæ. By C. D. SOAR and W. WILLIAMSON.

The British Ixodoidea. By W. F. COOPER and L. E. ROBINSON.

The Earwigs of the World. By Dr. MALCOLM BURR.

May, 1913.





SMITHSONIAN INSTITUTION LIBRARIES



3 9088 00719 4525