



**SPACE TO
ROAM.**



SHOPPING DISTRICTS

- AA. Camel Plaza
- BB. Historic Downtown
- CC. Holiday Shopping Center
- DD. Powder Basin Shopping Center
- EE. Silverado Center
- FF. Southview Shopping Center
- GG. Town Center

ACCOMMODATIONS

- A. Ar buckle Lodge
- B. Alamo Inn & Suites
- C. Arrowhead Motel
- D. Best Western Tower West
- E. Budget Inn Express
- F. Candlewood Inn & Suites
- G. Comfort Inn & Suites
- H. Country Inn & Suites
- I. Days Inn
- J. Fairfield Inn & Suites
- K. Green Tree Campground
- L. Hampton Inn

- M. High Plains Campground
- N. Holiday Inn Express
- O. Home2 Suites
- P. Howard Johnson
- Q. La Quinta Inn & Suites by Wyndham
- R. M&A Motel
- S. Marriott Town Place Suites
- T. Motel 6
- U. Mustang Motel
- V. National 9 Inn
- W. Quality Inn
- X. Ramada Plaza
- Y. Super 8 Motel
- Z. Sagebluff RV Park
- A1. Travelodge
- B1. Wingate Inn

PUBLIC FACILITIES & MUSEUMS

1. Ava Art Center
2. Avenues of Art
3. Axe House
4. Bell Nob Golf Course
5. Bicentennial Park

6. Campbell County Convention & Visitors Bureau
7. Campbell County Chamber of Commerce
8. Campbell County Ice Arena
9. Campbell County Memorial Hospital
10. Campbell County Parks & Recreation Center
11. Campbell County School District Adventurarium
13. Campbell County School District Planetarium
15. Spirit Hall Ice Arena
16. City Hall
17. City Park
18. City Pool
19. Dalbey Memorial Park
20. Eagle Butte Overlook
21. Energy Capital Sports Complex
22. Flightzone
23. Frontier Relics & Auto Museum
24. Gillette College
25. Gillette College Area 59
26. Gillette Country Club

27. Gillette Historic Walking Tour
28. Gillette Main Street
29. High Plains Energy Equipment Display
30. Inspiration Gardens at Mt Pisgah
31. Iron Horse Skateway
32. McManamen Park
33. Northeast Wyoming Regional Airport
34. Post Office - Main
35. Red Rock Trails
36. Rockpile Museum
37. Cam-Plex Multi-Event Facilities
38. Wright Centennial Museum
39. Wright Visitor Center

Be sure to stop by the Visitor Center in the heart of historic downtown Gillette for visitor information and recommendations.

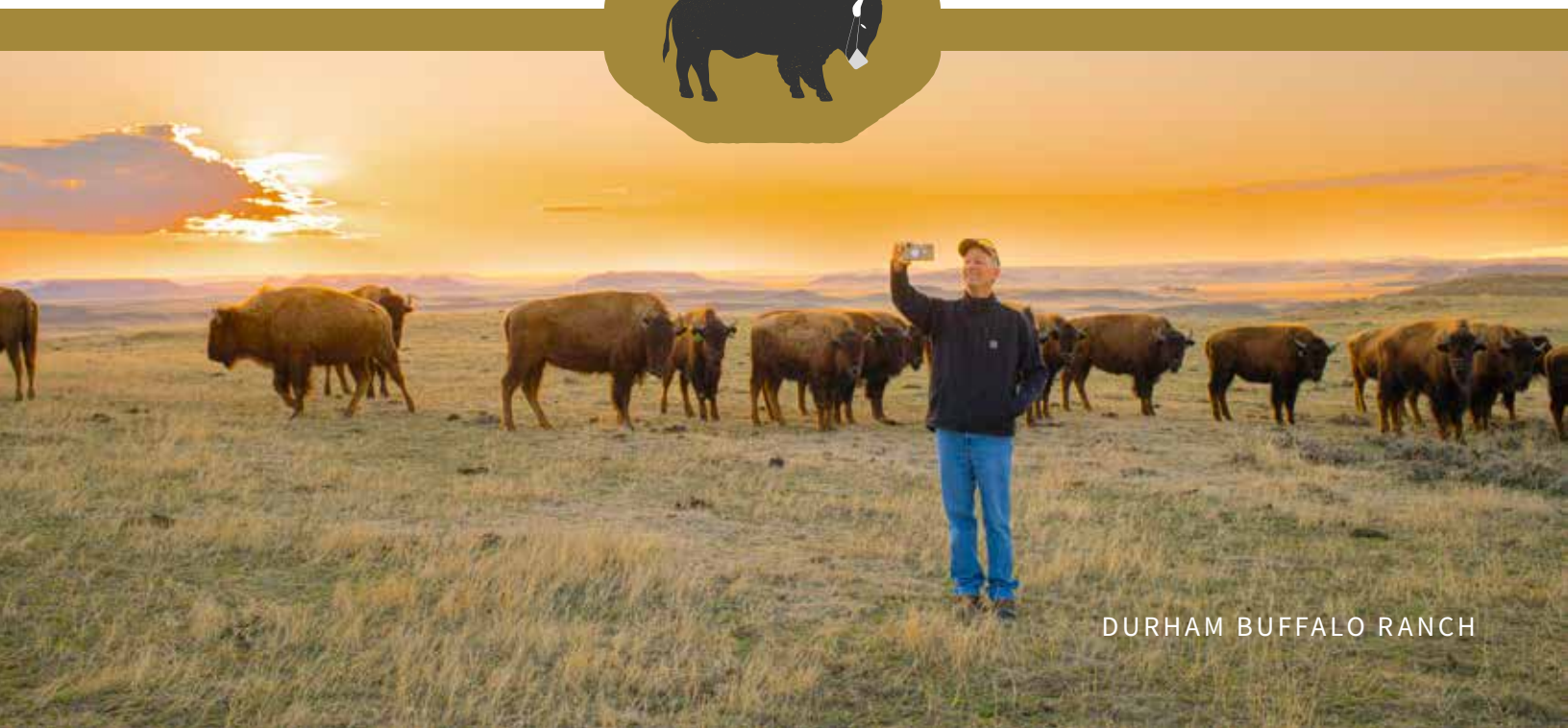
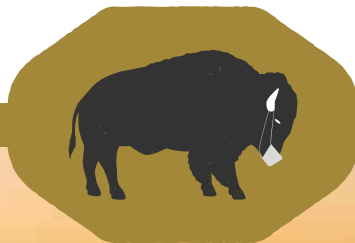


WELCOME TO CAMPBELL COUNTY.

First, thank you for your interest in our little corner of Wyoming. Obviously, you are looking for a monumental vacation in one of the most wild and picturesque regions of the world. We happen to be sitting right in the middle of all this breathtaking natural beauty, history, wildlife and wide open spaces. Situated between Mount Rushmore National Memorial, Devils Tower National Monument (just an hour's drive from Gillette) and Yellowstone National Park, a visit to Gillette and Wright is the perfect stop for your trip out west. Find out why.

ROAM SAFELY.

Health is our #1 priority. Please visit
<https://www.ccgov.net/2104/Coronavirus-COVID-19>
for the latest county rules & restrictions.



DURHAM BUFFALO RANCH



CONTENTS

ENERGY CAPITAL	4
OUTDOOR ADVENTURE	5
DOWNTOWN SCENE	6-7
ARTS & CULTURE	8-9
MUSEUMS	10-11
FOODIE SCENE	12-13
JUST WRIGHT	14
EVENTS & RECREATION	15
GETTING AROUND	16
LODGING	17

EXPLORE MORE AT
VISITGILLETTE.COM

*Four rock
climbers scale
Devils Tower
National
Monument.*



DEVILS TOWER

*Just an hour away from Gillette is **Devils Tower**, our country's first National Monument.*

AN HOUR FROM THE TOWER

Devils Tower, one of nature's grandest rock formations, is a must-see during any visit to the West. Looming more than 1,200 feet above the serene Belle Fourche River and northeastern Wyoming plains, Devils Tower is rich with culture, history and pristine natural beauty. Several Native American tribes have deep ties to Devils Tower, and the legends surrounding its formation are as elegant and intricate as the rivets and grooves within the monument. After you've heard all of the lore, you'll find the geological explanations equally fascinating.

Your Devils Tower visit will not be short on activities. Whether you're looking to simply experience the breathtaking views or climb the Tower, the range of activities fits into any itinerary. You can choose

between eight miles of trails near the monument to hike. Most visitors will take the 1.3 mile paved path that circles the formation, while other trails lead in and out of the surrounding forest and terrain. The area wildflowers are exquisite, while bird and animal lovers should always be on the lookout. Those interested in a more structured, informational experience can take a ranger-led tour of the monument which includes a 90 minute walk detailing the geological and anthropological history of the area. And for the truly adventurous, Devils Tower is a climbing mecca.

Wildlife lover: be sure to stop at the prairie dog town at the base of the Tower and view these native - and super cute - residents.



DURHAM BUFFALO RANCH

WHERE THE BUFFALO ACTUALLY ROAM

With approximately 3,000 bison on 65,000 acres in the Wright area, the Durham Ranch is one of the world's oldest and largest buffalo ranches. This historic complex raises bison holistically by maintaining large grazing herds while improving the rangelands on which they live. Tour participants can see special working facilities that the Durham Ranch has been designing and developing since the 1960s. On-site catered ranch meals are available, and anyone who has never tried buffalo must take advantage of this opportunity. To book a tour call 307-686-0040 or log onto VisitGilletteWright.com and book your tour online.



PRONGHORN ANTELOPE

HUNTING & FISHING

With more pronghorn antelope than anywhere else in the world, Campbell County is on the wish list of hunters across the country. Experience the thrill of the chase in the cool, crisp Wyoming air during your visit. In addition to pronghorn, Campbell County offers world-class elk and mule deer hunting.

Fishermen flock to Keyhole Reservoir, located 30 miles east of Gillette, for world class walleye, catfish, small mouth bass and northern pike. If you are a serious fisherman, be sure to hire a local fishing guide to ensure a bountiful outing.

GOLF

Golf anyone? Campbell County is home to three unique and challenging golf courses: In Gillette, Bell Nob Golf Course is a municipal, 18 hole championship course over 7,024 yards with a par of 72, plus a par-3, 9 hole course. The Gillette Golf Club is a public 9 hole course. In Wright, you can hit the links at the 9 hole Hay Creek Municipal Golf course.

HISTORIC RANCHES

If you enjoy agricultural tours, be sure to ask us about the Geis Cattle and Sheep Ranch tours! Call the Gillette Visitor Center at 307-686-0040 for reservations and more details.

DOWNTOWN GILLETTE

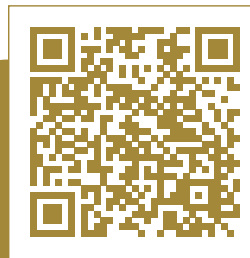
Downtown Gillette is where the saloon doors of the old West swing open for a dramatic entrance into small town Americana. Learn about the city's chronicles of gunslinging cowboys while experiencing the charm of a quaint but up-and-coming downtown on any of the historic walking tours.

You'll see the spot outside the Montgomery Bar where legendary outlaw Ray Montgomery pulled then-mayor Mark Shields out into the street to beat him up to take over as mayor in 1914. Tour the former City Hall which held public meetings, dances, trials and funerals, sometimes all on the same day. Make sure to explore behind the building, where you'll find a dent in the main iron door from a jealous husband's bullet who warned a man away from his wife with a pistol.

The contiguity between past and present is most obvious at the former Gillette Post Office, which is now Gillette Brewing Company and Gone Postal Pizzeria. The building is listed on the National Register of Historic Places, and when you step inside you can still see remnants of mail exchange like the preserved teller windows. While you're there, make sure to order a Locomotive Brown Ale. Trust us. It's in the name of research.

You'll feel the boundaries between time blur as you experience historically relevant and riveting stories about old West lore in the freshly modern setting of boutiques, shops and restaurants in Gillette's revived downtown, so it's only fitting that the tours are available in one classic format and another that's much more contemporary. Enjoy the nostalgia of simpler times with the Campbell County Historical Society's free walking tour using a printed guidebook, which is available at the Gillette Visitor Center, located at 314 S. Gillette Ave.

Check out all the Mobile Itineraries on the website. Just pull them up on your smart phone, follow the tour and have a blast.



For a more immersive, technological experience, download the free **TravelStories** app, a location-aware audio tour that will automatically begin playing when your phone is in front of any of the ten stops along the tour. Download the app and learn more at **TravelStories.com**, and search for **Gillette**, or just scan the QR code above.



GILLETTE BREWING COMPANY



GILLETTE BREWING CO.
& GONE POSTAL PIZZERIA

BREW-MEAD-ERY TOUR

If you are so inclined, enjoy a new tradition in Gillette, the Brew-Mead-ery Tour. In addition to the traditional bars and lounges in town, Gillette is also home to two exceptional craft breweries and the first meadery in the state of Wyoming.

Located at the historic building that was once the Gillette Post Office in the heart of downtown Gillette, Gillette Brewing Company & Gone Postal Pizzeria creates over 20 hand crafted beers loved by locals, visitors and beer judges alike. At the corner of Second and Gillette Avenue, you'll find tasty beers all crafted and brewed onsite. You can't go wrong with any beer GBCo. has on tap. Be sure to buy a growler of your favorite style to take back home!



BIG LOST MEADERY & BREWERY

Not far away, at 105 S. Warren Ave, Big Lost Meadery and Brewery awaits. Big Lost is a homegrown meadery and lounge specializing in handcrafted meads and great experiences. Visit Wyoming's first dedicated meadery for some of the freshest flavors of this honey-based alcohol. Grab a drink at the bar (you are served the meads in steer horns - just like the Vikings drank mead thousands of years ago), then buy a bottle to take back home as a unique souvenir.

The folks at Big Lost also brew beer! Big Lost sells its tap beer at Pizza Carrello Restaurant at 601 S Douglas Hwy.

AVENUE OF ART

Stroll along the Avenues of Art's outdoor art gallery located on 4-J Road. See map, page 2. The Mayor's Art Council implemented the Avenues of Art program, in which artists were given the opportunity to exhibit sculptures on our main streets that receive high visibility. Selected artists are paid a \$1000 stipend for the loan of their sculptures to exhibit for 1 year, during which time it will be for sale to the public. In the last 15 years, 110 sculptures have sold.



AVA COMMUNITY ART CENTER

AVA Community Art Center is a member-based community center. AVA offers a spacious ceramics maker space, workshops in a variety of mediums, monthly exhibits, AVA's Member Artisan Market and community outreach programs to help further inspire arts and connect artists within our community.



ADVENTURARIUM

This hands-on science center is an amusement park for kids and an educational dream for parents. With everything from a bubble experiment to a dizzying gravity ride, the kids will have a great time creating rainbows, experimenting with sunlight and interact with insects and reptiles and much more.





GILLETTE PLANETARIUM

Many visitors are surprised to learn that Gillette is home to a world-class planetarium, but after a \$2.8 million upgrade, the Sage Valley Planetarium now has technology available at only a handful of other planetariums in the world. The Goto Chronos II star projector gives audiences a view of more than 3 million objects on a 30 foot diameter dome, including 8,000 stars, Milky Way galaxy and deep sky objects. Not even the sky is the limit in Campbell County. Check out our website for info on special star shows coming to the Planetarium!



EVENTS AT THE CAM-PLEX

The CAM-PLEX Multi-Events Facilities in Gillette provide over 1,100 acres of possibilities. In addition to the newly remodeled CAM-PLEX Heritage Center, Wyoming's premiere performing arts center, the facilities include a convention and exhibit hall, two large multi-purpose pavilions, indoor and outdoor rodeo grounds, RV campgrounds, a 21-acre park and a picnic area. Year-round entertainment includes performing arts theatre, Broadway plays, musicals, symphonies, rodeo and concerts featuring national recording artists. Whenever you plan your visit to Campbell County, there's sure to be something happening at the CAM-PLEX.

As the biggest multi-event space in the region, CAM-PLEX features exceptional venues, facilities and events. Past events include the Pyrotechnics Guild International's Fireworks Convention, National High School Rodeo Finals, motocross races, equestrian programs, hockey games, conventions, RV rallies, symphony orchestra performances, trade shows, live horse racing, sales, art exhibits, plays and much more. Visit cam-plex.com to see the entire calendar and purchase tickets to all events.



SURFACE COAL MINES

*Wyoming coal
has the
lowest carbon
emissions.*

ENERGY CAPITAL

Known as the “Energy Capital of the Nation,” coal from the Powder River Basin in Campbell County powers much of the nation. In fact, the Powder River basin provides approximately 40% of our nation’s coal. Experience the energy of Campbell County first hand during summer coal mine tours, which are available seasonally at the Visitor Center. COVID restrictions have affected some mine tours, but be sure to check with the Visitor Center for when the tours will resume.

The main reason, however, that the Campbell County coal has always been in such high demand is because of its low sulfur content which produces lower carbon emissions. Tour participants will drive alongside the massive equipment, witness reclamation processes that restore coal mining lands and see firsthand just what makes Campbell County the Energy Capital of the Nation.



ROCKPILE MUSEUM

ROCKPILE MUSEUM

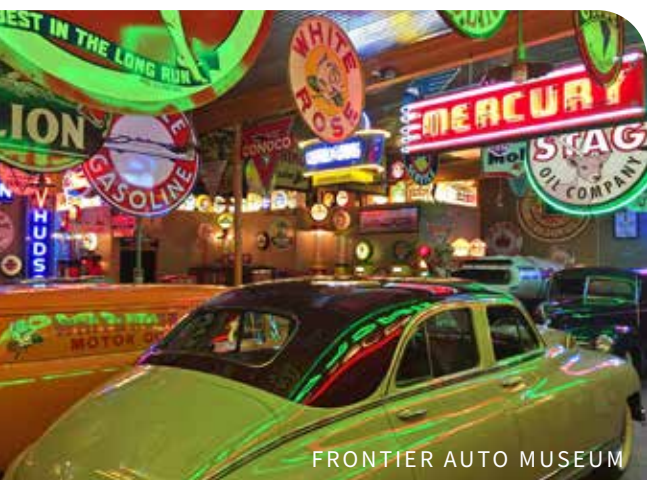
The Rockpile Museum in Gillette focuses on local and regional history with an emphasis on the culture and people of Campbell County. This is the local historic hub for residents and visitors as the museum collects, preserves and interprets the history of Campbell County and northeast Wyoming through exhibits and programs. Permanent and changing displays depict energy, railroad, educational and other important periods and developments. Be sure to grab a photo with the famous rock pile formation outside of the museum.



WRIGHT CENTENNIAL MUSEUM

WRIGHT CENTENNIAL MUSEUM

The Wright Centennial Museum provides a unique opportunity to witness Wyoming history spanning from the homestead era through the foundation of Wyoming. Home to an original Jacob William Benson painting, sheep wagons, historic tools and a special map of area centennial ranches, the Centennial Museum allows visitors to connect with the pioneer spirit that established our country.



FRONTIER AUTO MUSEUM

FRONTIER AUTO MUSEUM

Take a historical tour through a Transportation Museum and Old Main-street Town. See the private collection of the Wandler family who have been picking and restoring cars, vintage gas pumps, signs, antiques and collectables for well over a half century. In addition, check out the attached Frontier Relics Antique Store. It's an amazing experience and well worth a visit. Frontier Auto Museum & Frontier relics are located at 211 W. 2nd St.

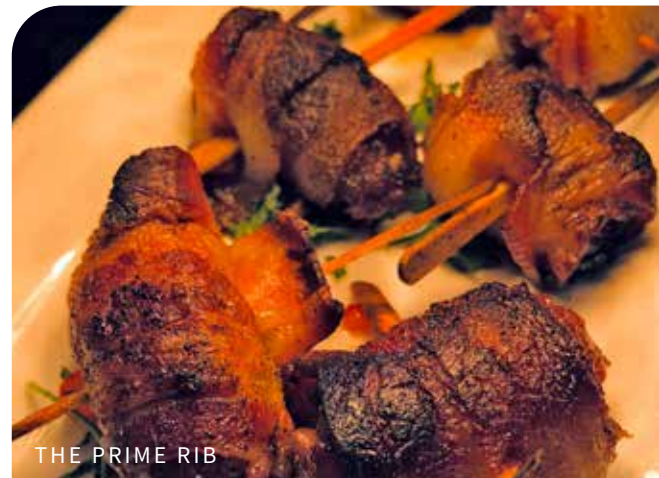
PIZZA CARRELLO

Fall in love with Pizza Carrello. Everything revolves around the gigantic, bright red wood-fired oven in the middle of the 140-seat dining room. Every dish has a wood-fired component including charred greens in salads or the pita bread wraps that come directly out of the oven. Enjoy a stunning variety of exotic cheeses and pizza toppings. There's a full-service bar serving local and regional beers that pair with each pizza. Pizza Carrello has been voted "Best Pizza in Wyoming" by multiple publications and websites.



THE PRIME RIB

New breweries, pizzerias, steak houses and ethnic restaurants have changed the city's landscape. But in the midst of all of this change, one restaurant has stayed the same. With consistently outstanding food, drink and service over the past three decades, The Prime Rib Restaurant and Wine Cellar has thrived. Enjoy perfectly roasted prime rib, locally raised bison and the largest private wine cellar in Wyoming (and maybe the entire Rocky Mountain Region). Be sure to try their Chorizo Dates – it's an appetizer to die for.



THE COOP

What happens when Costa Rican, Mexican and American food come together in a rotisserie chicken restaurant? Well, once the love and friendship is added in, you get one of the most unique and original eating establishments in Wyoming. Specializing in Costa Rican style whole rotisserie chicken and expanding out to numerous Mexican and South American delicacies. The chicken and empanadas alone are worth a road trip, but everything is served with flavored rice and a bowl of black beans.





MOBILE FOOD TRUCKS

MOBILE FOOD TRUCK SCENE

For a relatively small city (around 40,000 residents), Gillette has an impressive collection of mobile food trucks serving up everything from authentic Mexican cuisine and Barbeque to shaved ice and Italian sodas. The food trucks are usually in high gear throughout the spring, summer and fall while some are able to stay open even during the winter. Be sure to contact the Visitor Center at 307-686-0040 for food truck locations.



PHILLY SHOP

PHILLY SHOP

Have you ever eaten inside a shipping container? How about six shipping containers all hooked together in various angles? Yup, the recently opened Philly Shop is operating a full-service Philly cheesesteak restaurant and drive through within an amazing maze of large railroad shipping containers. That's cool enough, but the sandwiches are out of this world too. If you weren't inside a shipping container, you would think you were in Philadelphia. Be sure to check this place out.



BOOTHILL STEAKHOUSE

MUCH MORE

There are over 70 restaurants in Gillette & Wright. Get a full listing by scanning the QR code.



THE TOWN OF WRIGHT

The small town of Wright, located 40 miles south of Gillette on Hwy. 59, is a perfect stop for a visitor looking to experience small-town Wyoming life. An overnight stay is the perfect addition to a trip to Campbell County.

After you've admired the idyllic pond in the center of town, you won't be short on activities. Wright's Centennial Museum captures Wyoming's broad history ranging from pioneer spirit to the energy industry. For leisure, schedule a tee time on the 9-hole Haycreek Golf Course or catch a rodeo or other ag-related event at the Southern Campbell County Ag Complex. And for a steak so flavorful it could only be made in Wyoming, dine at the Open Range Steakhouse.

And for a real party on your vacation, schedule a visit during Wright Days in late June. Dive into the mud volleyball pit, run or walk a 5K, watch a movie in the park or enter into mayhem with the famed demolition derby. Bring the family for an outdoor celebration of summer in Wright.



WRIGHT WELCOME CENTER



FISHING AT PANTHER POND





MATT COSTA PERFORMS
AT DONKEY CREEK FESTIVAL

ANNUAL EVENTS

June: Donkey Creek Festival

July: 4th of July Celebration

September: Downtown Summer
Brewfest & Car Show

October: Downtown Boo-Fest;
Trick-or-Treat Main Street

November: Gillette Main Street
Plaid Friday; Small Business
Saturday

December: Downtown Holiday Ice
Fest & Parade of Lights;
New Year's Eve Buck & Ball

Check out the full events calendar at VisitGilletteWright.com.



CAMPBELL COUNTY RECREATION CENTER

REC CENTER

Just because you're on vacation doesn't mean you have to skip exercise, and with Gillette's state-of-the-art recreation center, you'll want to hit the gym during your visit. The 190,000 square foot facility features a 42-foot climbing wall designed to resemble Devils Tower Monument. You'll also find three basketball courts, four racquetball courts, a six-lane 200 meter track and five indoor tennis courts. With weight rooms, a cardio area, a variety of fitness classes as well as a kids' zone with babysitting, a good sweat session will fit right into your itinerary.



ENERGY CAPITAL SPORTS COMPLEX

ENERGY CAPITAL SPORTS COMPLEX

Gillette continues to invest in its youth, recreation and visitor opportunities with the addition of the Energy Capital Sports Complex. This brand new facility is comprised of 320 acres of land that has been developed into four state-of-the-art competitive softball fields. But construction is happening now and it includes multiple baseball fields and soccer fields, be sure to check back each visit to see what new possibilities await at the Energy Capital Sports Complex. New fields are expected to be ready for play by Spring 2021.



GETTING AROUND BY LAND

Arriving from the east, west or north: Use Interstate 90. Arriving from the south: Use Interstate 25, then exit to Wyoming Highway 59.

BY AIR

The Northeast Wyoming Regional Airport features daily direct jet service to and from Denver on United airlines, operated by SkyWest Airlines. There is also free parking and free Wi-Fi. Visit www.iflygillette.com for more information and to reserve a flight.



SkyWest Airlines
For reservations:
(800) 221-1212
www.united.com
www.iflygillette.com

TAXI & COURIER SERVICE

Need-A-Ride Taxi Cab, LLC
(307) 682-3666

Another Cab Company
(307) 299-5830

BUS CHARTER INFORMATION

Coach America/
Powder River Transportation
1700 East U.S. Hwy. 14-16
(307) 682-0960

VEHICLE RENTAL

Avis Rent-A-Car – Airport
(307) 682-8588
(800) 331-1212

Enterprise Rent-A-Car
603 E. 2nd Street
(307) 686-5655
(800) 736-8222

Hertz Rent-A-Car
Located at Airport
(307) 686-0550

Priceless Car & Truck Rental of
Gillette
513 E. 2nd Street
(307) 363-4388
www.pricelesscarrental.com

HOTELS & MOTELS

			Total Rooms	Shuttle Service	Pets Allowed	Wi-Fi	Continental Breakfast	Restaurant	Lounge	Fitness Center	Pool	Laundry	Kitchenettes	Meeting Rooms	Handicap Accessible
Alamo Inn & Suites	608 E. 2nd St.	(307) 682-9341	56	•	•	•					•	•			•
Arbuckle Lodge	1400 S. Garner Lake Rd.	(307) 685-6363	86		•	•	•			•	•	•	•	•	•
Arrowhead Motel	202 S. Emerson St.	(307) 686-0909	32		•	•						•	•		
Best Western Tower West Lodge	109 N. U.S. Hwy. 14-16	(307) 686-2210	190	•	•	•		•	•	•	•	•	•	•	•
Budget Inn Express	2011 Rodgers Dr.	(307) 670-8134 (800) 709-6123	49		•	•	•				•	•			•
Candlewood Suites	904 Country Club Rd.	(307) 682-6100 (877) 226-3539	83		•	•				•		•	•		•
Comfort Inn & Suites	1607 W. 2nd St.	(307) 685-2223 (800) 424-6423	60	•	•	•	•			•	•	•		•	•
Country Inn & Suites	2597 S. Douglas Hwy.	(307) 682-0505	80	•		•	•			•	•	•			•
Days Inn	910 E. Boxelder Rd.	(307) 682-3999 (800) 329-7466	141		•	•	•			•		•			•
Fairfield Inn & Suites	2577 S. Douglas Hwy.	(307) 682-1717	80	•		•	•			•	•	•			•
Hampton Inn	211 Decker Ct.	(307) 686-2000 (800) 426-7866	58	•		•	•			•	•	•			•
Holiday Inn Express	1908 Cliff Davis Dr.	(307) 686-9576 (866) 690-9800	83		•	•	•			•	•	•		•	•
Home2 Suites by Hilton	1120 E. Boxelder Rd.	(307) 257-7040	99		•	•	•			•	•	•	•		•
Howard Johnson	1004 E. Hwy. 14-16	(307) 682-2616	75	•	•	•	•							•	
LaQuinta Inns & Suites	450 Boxelder Rd.	(307) 686-6000	89		•	•	•			•	•	•		•	
M & A Motel	109 Rampart Dr., Wright	(307) 464-1115	18											•	•
Marriott TownePlace Suites	1715 W. 2nd St.	(307) 682-1464	85		•	•	•			•	•	•			•
Motel 6	2105 Rodgers Ave., at I-90 & 14-16	(307) 686-8600 (800) 466-8356	74		•	•				•		•			•
Mustang Motel	922 E. 3rd St.	(307) 682-4784	31		•	•									
National 9	1020 Hwy. 14-16	(307) 682-5111 (800) 524-9999	78		•	•		•	•		•				•
National 9	519 Latigo Dr., Wright	(307) 464-1510	27		•	•							•	•	•
Quality Inn	409 Butler Spaeth Rd.	(307) 682-4757	62		•	•	•			•		•			
Ramada Plaza Hotel & Conference Center	2009 S. Douglas Hwy.	(307) 686-3000	159	•	•	•	•	•	•	•	•	•	•	•	•
Super 8	208 S. Decker Ct.	(307) 682-8078 (800) 800-8000	60	•	•	•	•					•			•
Travelodge	2307 Wyoming Ave.	(307) 686-5099	40		•	•									
Wingate by Wyndham	1801 Cliff Davis Dr.	(307) 685-2700 (800) 288-1000	84	•		•	•			•	•	•		•	•
Wright Hotel	300 Reata Dr., Wright	(307) 464-6060	71		•	•	•	•	•			•		•	•

RV PARKS & CAMPGROUNDS

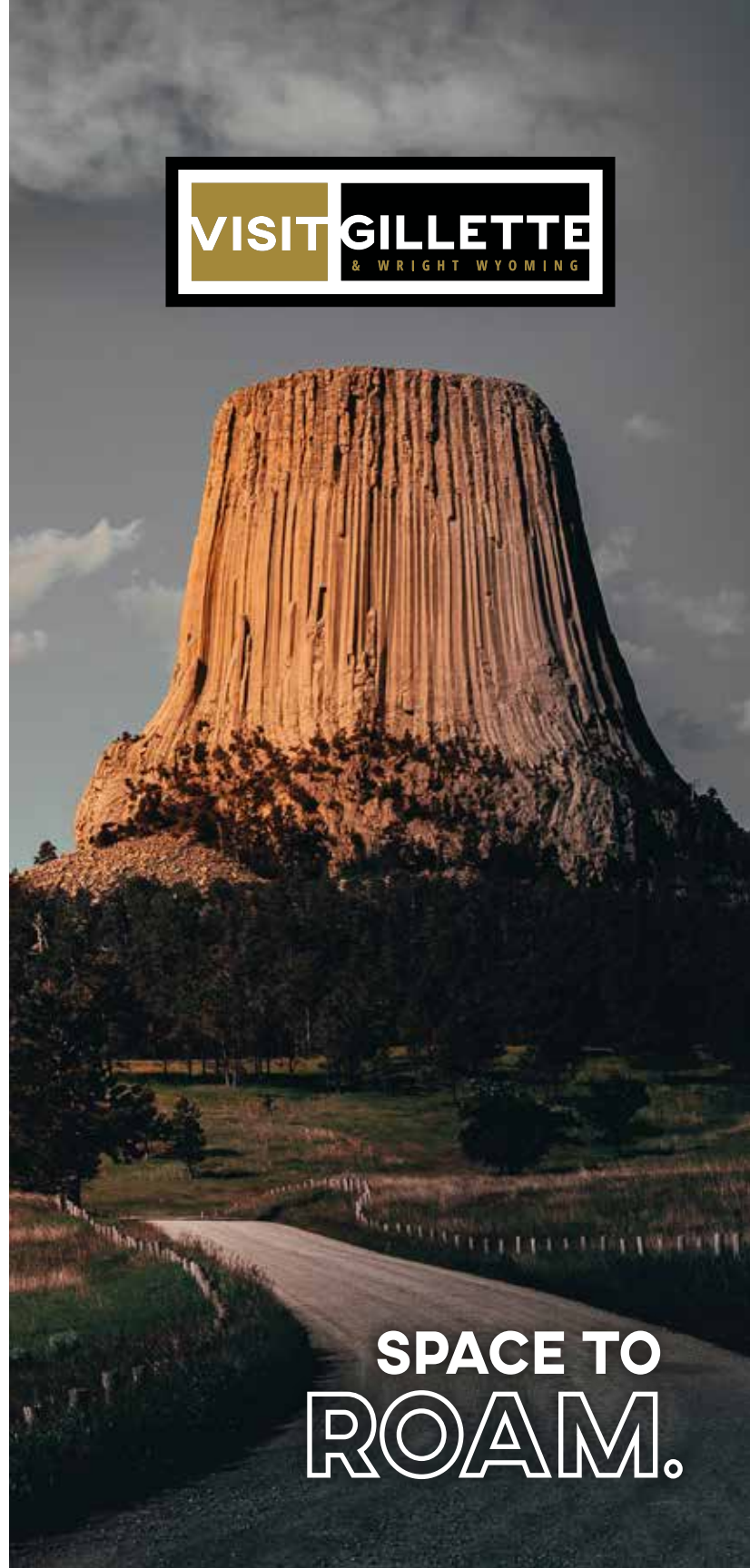
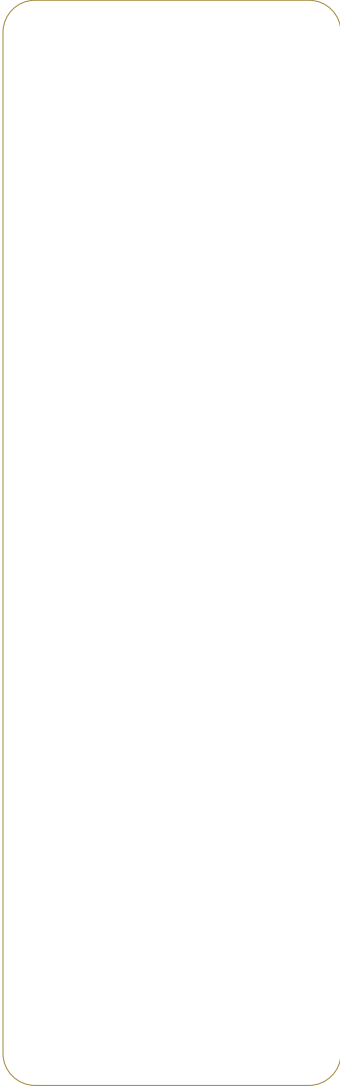
			Total Sites	Store	Pets	Wi-Fi	Laundry	Waste Dumps	Showers	Handicap Accessible
All Seasons RV Park	1000 McIntosh Ln., Rozet	(307) 686-2552	20	•	•	•	•	•	•	•
Green Tree's Crazy Woman	1001 W. 2nd St.	(307) 682-3665	108	•	•	•	•	•	•	•
High Plains Campground	1600 S. Garner Lake Rd.	(307) 687-7339	65	•	•	•	•	•	•	•
Sagebluff RV Park	56 S. Boulder Circle, Wright	(307) 464-1305	76		•	•	•	•	•	•



Head to VISITGILLETTEWRIGHT.COM for more information on accommodations in Campbell County.



VISIT GILLETTE & WRIGHT
1810 S. DOUGLAS HIGHWAY, SUITE A
GILLETTE, WY 82718



**SPACE TO
ROAM.**