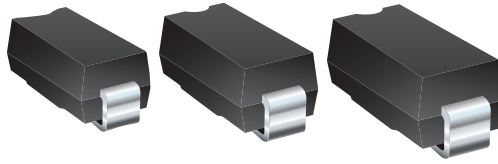


Product Obsolescence Memo

CHIP DIODES



January, 2018

REVISED MARCH 14, 2018

Select Bourns® Model CD214x Series Surface Mount Rectifier Diodes to be Discontinued

In accordance with our ongoing product lifecycle management procedure, Bourns has identified select Bourns® Model CD214A-BxLF, CD214B-BxLF, CD214C-BxLF, CD214B-F, CD214C-F and CD214C-R Series Surface Mount Rectifier Diode products that will be transferred to an End of Product Life status.

Recommended replacement products are available. The replacement devices are functionally equivalent, but are not in identical packages. Please contact the [Bourns team of Field Application Engineers](#) if you have any questions regarding the suggested replacement parts and your application requirements. A list of the affected part numbers and the recommended replacement part numbers is on the following page.

Bourns will be discontinuing the Model CD214A, CD214B and CD214C Series with an effective date of July 31, 2018. Products purchased during this End of Product Life transition period will be covered by Bourns' standard warranty. Last Time Buy orders for these products will be considered non-cancellable and non-returnable.

Please plan for the following deadlines:

*Last time buy date: **July 31, 2018***

*Last time ship date: **September 30, 2018***

Should you have any questions or need additional information, please feel free to contact [Customer Service/Inside Sales](#).

Select Bourns® Model CD214x Series Surface Mount Rectifier Diodes to be Discontinued
 January, 2018 - **REVISED MARCH 14, 2018**
 Page 2 of 2

Obsolete Part Number	Recommended Replacement
CD214A-B1100LF	CD214A-B1100R
CD214A-B120LF	CD214A-B120R
CD214A-B120LLF	CD214A-B120LR
CD214A-B130LF	CD214A-B140R
CD214A-B130LLF	CD214A-B140LR
CD214A-B140LF	CD214A-B140R
CD214A-B150LF	CD214A-B160R
CD214A-B160LF	CD214A-B160R
CD214A-B170LF	CD214A-B1100R
CD214A-B180LF	CD214A-B1100R
CD214A-B190LF	CD214A-B1100R
CD214A-B220LF	CD214A-B220R
CD214A-B230LF	CD214A-B240R
CD214A-B240LF	CD214A-B240R
CD214A-B240LLF	CD214A-B240LR
CD214A-B250LF	CD214A-B260R
CD214A-B260LF	CD214A-B260R
CD214A-B320LF	CD214A-B320R
CD214A-B330LF	CD214A-B340R
CD214A-B340LF	CD214A-B340R
CD214A-B340LLF	CD214A-B340LR
CD214A-B350LF	CD214A-B360R
CD214A-B360LF	CD214A-B360R

Obsolete Part Number	Recommended Replacement
CD214B-B120LF	CD214B-B220R
CD214B-B130LF	CD214B-B240R
CD214B-B140LF	CD214B-B240R
CD214B-B150LF	CD214B-B260R
CD214B-B160LF	CD214B-B260R
CD214B-B220LF	CD214B-B220R
CD214B-B230LF	CD214B-B240R
CD214B-B240LF	CD214B-B240R
CD214B-B250LF	CD214B-B260R
CD214B-B260LF	CD214B-B260R
CD214B-B320LF	CD214B-B320R
CD214B-B330LF	CD214B-B340R
CD214B-B340LF	CD214B-B340R
CD214B-B350LF	CD214B-B360R
CD214B-B360LF	CD214B-B360R
CD214B-F2100	CD214B-FS2D
CD214B-F2150	CD214B-FS2D
CD214B-F2200	CD214B-FS2D
CD214B-F2400	CD214B-FS2G
CD214B-F250	CD214B-FS2D
CD214B-F2600	CD214B-FS2J
CD214B-F3100	CD214B-FS3D
CD214B-F3150	CD214B-FS3D
CD214B-F3200	CD214B-FS3D
CD214B-F3400	CD214B-FS3G
CD214B-F350	CD214B-FS3D
CD214B-F3600	CD214B-FS3J

Obsolete Part Number	Recommended Replacement
CD214C-B320LF	CD214C-B320R
CD214C-B330LF	CD214C-B340R
CD214C-B340LF	CD214C-B340R
CD214C-B350LF	CD214C-B360R
CD214C-B360LF	CD214C-B360R
CD214C-F3100	CD214C-FS3D
CD214C-F3200	CD214C-FS3D
CD214C-F3400	CD214C-FS3G
CD214C-F350	CD214C-FS3D
CD214C-F3600	CD214C-FS3J
CD214C-R3100	CD214C-S3D
CD214C-R31000	CD214C-S3M
CD214C-R3200	CD214C-S3D
CD214C-R3400	CD214C-S3G
CD214C-R350	CD214C-S3D
CD214C-R3600	CD214C-S3J
CD214C-R3800	CD214C-S3K