

A SELECTION FROM THE VAST RANGE OF

# Clarke®

QUALITY PRODUCTS

**AIR COMPRESSORS**

From DIY to industrial, Plus air tools, spray guns and accessories.

**GENERATORS**

Prime duty or emergency standby for business, home and leisure.

**POWER WASHERS**

Hot and cold, electric and engine driven - we have what you need

**WELDERS**

Mig, Arc, Tig and Spot. From DIY to auto/industrial.

**METALWORKING**

Drills, grinders and saws for DIY and professional use.

**WOODWORKING**

Saws, sanders, lathes, mortisers and dust extraction.

**HYDRAULICS**

Cranes, body repair kits, transmission jacks for all types of workshop use.

**WATER PUMPS**

Submersible, electric and engine driven for DIY, agriculture and industry.

**POWER TOOLS**

Angle grinders, cordless drill sets, saws and sanders..

**STARTERS/CHARGERS**

All sizes for car and commercial use.



# MONZA OIL FREE AIR COMPRESSOR

## OPERATION & MAINTENANCE INSTRUCTIONS

For spare parts and servicing, please contact your nearest dealer, or Clarke International on  
**020 8988 7400**  
e-mail: [Parts@clarkeinternational.com](mailto:Parts@clarkeinternational.com) e-mail: [Service@clarkeinternational.com](mailto:Service@clarkeinternational.com)  
**Clarke** INTERNATIONAL  
Hemnall Street, Epping, Essex CM16 4LG

**PARTS & SERVICE CONTACTS**

For Spare Parts and Service, please contact your nearest dealer,  
or CLARKE International, on one of the following numbers.

**PARTS & SERVICE TEL: 020 8988 7400**

**PARTS & SERVICE FAX: 020 8558 3622**

**or e-mail as follows:**

**PARTS: [Parts@clarkeinternational.com](mailto:Parts@clarkeinternational.com)**

**SERVICE: [Service@clarkeinternational.com](mailto:Service@clarkeinternational.com)**

## PARTS LIST (Compressor)

No.	Description	Qty	Part No.
1	Knob	1	FN116005020
2	Adjusting Screw	1	FN116005015
3	O-ring 117	1	FN010024000
4	Adjusting Spring	1	FN116005019
5	O-ring 2021 Viton	1	FN010067000
6	Piston	1	FN116005022
7	Seal	1	FN116005018
8	Screw	1	FN014013042
9	Intake Filter	1	FN317028000
10	Screw	4	FN014013027
11	Head	1	FN116006002
12	O-ring 4081	1	FN010058000
13	Manifold	1	FN016005003
14	Screw	2	FN014013021
15	Head Gasket	1	FN116005017
16	Valve Plate	1	FN416005009
17	O-ring 4262	1	FN010057000
18	Cylinder	1	FN016005007
19	Piston Complete	1	FN416005003
20	Bearing	1	FN033059000
21	Fan Cover	1	FN116006004
22	Screw	2	FN014001022
23	Washer	2	FN116010013
24	Fan	1	FN116010004
25	Crankshaft	1	FN116010006
26	Casing	1	FN016010025
27	Screw	3	FN014002122
28	Bearing	1	FN033028000
29	Rotor	1	FN034128000
30	Wound Casing	1	FN316007605
31	Bearing	1	FN033070000
32	Balancing Ring	1	FN027011000
33	Screw	4	FN014006025
34	Vibration Foot	4	FN122HE0010
35	Rear Cover	1	FN016010016
36	Nut	3	FN014004001
37	Condenser	1	FN009200004
38	Housing	1	FN116006010
39	Switch	1	FN008006000
40	Overload Reset	1	FN008040000
41	Wire Holder	1	FN029042000
42	Power Cable	1	FN112GE0300
43	Clip	4	FN015059000
-	Spray Gun (Model PS)	1	FN5080803
-	Rubber Hose (3M)	1	FN3120203

## MONZA AIR COMPRESSOR

Thank you for purchasing this Clarke Monza Air Compressor, designed for DIY and light industrial use, where an output of not more than 7cfm is required. The machine may be run for up to 15 minutes at a time before requiring 15 minutes downtime, and is supplied with a paint spraygun and 3 metre hose. The Monza, unlike many other machines also delivers oil free air, which may be very important with certain applications

Before attempting to operate the machine, please read this instruction manual thoroughly and carefully follow all directions given. This is for your own safety and that of others around you, and also to help you achieve long and trouble free service from your compressor.

### GUARANTEE

This product is guaranteed against faults in manufacture for 12 months from purchase date. Please keep your receipt as proof of purchase. This guarantee is invalid if the product has been abused or tampered with in any way, or not used for the purpose for which it is intended. The reason for return must be clearly stated. This guarantee does not affect your statutory rights.

### CONTENTS



#### Page

Safety Precautions .....	4
Electrical Connections .....	5
Operating Instructions .....	6
Shutting Down .....	7
Routine Care & Maintenance .....	8
Fault finding .....	9
Paint Spraying Hints .....	10 & 11
Technical data .....	12
Accessories .....	12
Parts Diagrams .....	13
Parts List .....	14
Declaration of Conformity .....	15


## SAFETY PRECAUTIONS

### WARNING!

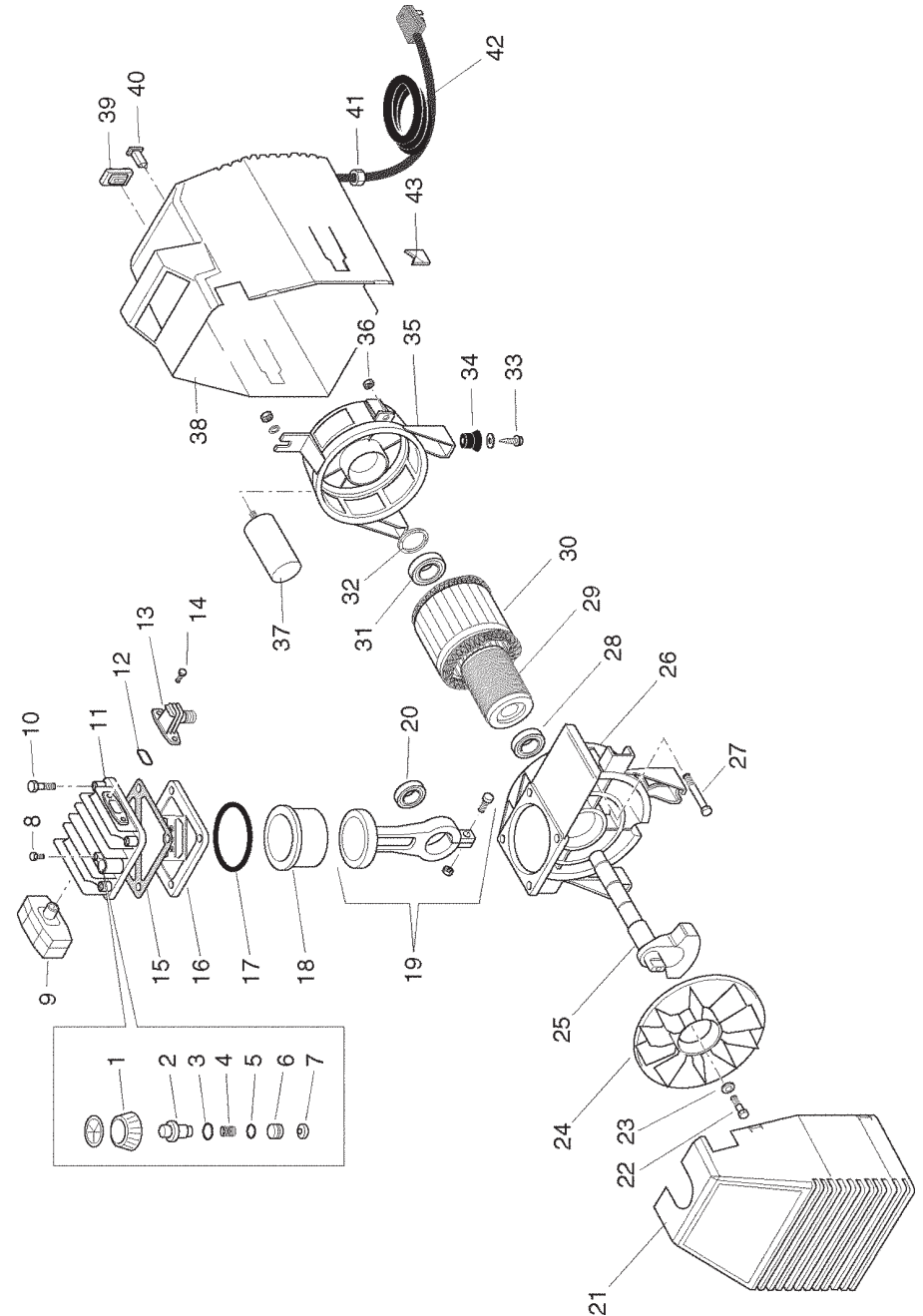
*Compressed air can be dangerous.  
Follow these safety instructions carefully.*

- Never direct a jet of compressed air at people or animals, or spray paint towards people or animals.
-  Use appropriate protective equipment, such as Clarke safety-goggles or glasses, dust masks, ear defenders etc. when using compressed air tools.
-  Air compressors work at high pressure. Inspect equipment and hoses regularly, checking for any damage or leaks. Have any damage properly repaired before using the machine again.
- Do not operate the compressor with any guards removed.
- Do not adjust or tamper with the safety valve in any way. The maximum working pressure (115 psi - approximately 8 bar) is clearly marked on the compressor.
- The compressor will become hot during operation. Do not touch the cylinder head or discharge pipe while the compressor is in use.
- Always release any pressure from the air hose (by operating the tool briefly) before disconnecting any hoses or tools.

### When paint spraying:

-  Always wear a suitably approved breathing mask when paint spraying, to protect against inhalation of paint spray or fumes. An air feed mask may be required when spraying some types of paint. If in doubt, check the paint manufacturers instructions.
- Make sure there is adequate ventilation. Do not spray in confined or enclosed areas.
- Many paints are flammable. Do not smoke while spraying or preparing paints, or spray near a naked flame or heat source.

## PARTS DIAGRAM



## TECHNICAL DATA

Model .....	Monza - (Oil Free)
Maximum Air Pressure .....	115 PSI
Air Displacement .....	7CFM
Motor .....	1½ HP
Voltage .....	230 VAC
Weight .....	10.5 kg (Packed)
Part Number .....	2220050
Dimensions (mm) .....	330x190x290

Please note that the details and specifications contained herein are correct at the time of going to print. However CLARKE International reserve the right to change specifications at any time without prior notice. Always consult the machines data plate

## ACCESSORIES

Your Monza Air Compressor can be used in conjunction with a range of optional accessories for inflating tyres, air brushing, stapling, blowing and many other uses. For details contact your local accessory stockist. A complete kit is available from your Clarke dealer which is ideal for almost all applications.

**Please quote part number 3110165**



Should you experience any difficulties obtaining accessories, please contact the Clarke sales department (telephone 01992 565300) for details of your nearest dealer.

## ELECTRICAL CONNECTIONS

Connect the mains lead to a standard 230 Volt (50Hz) electrical supply through an approved BS1363, 13amp plug or a suitably fused isolator switch.

We recommend that the compressor is connected to the mains supply through a Residual Current Device (RCD).

### WARNING! THIS APPLIANCE MUST BE EARTHED

IMPORTANT: The wires in the mains lead are coloured in accordance with the following code:

Green & Yellow	-	Earth
Blue	-	Neutral
Brown	-	Live

As the colours of the flexible cord of this appliance may not correspond with the coloured markings identifying terminals in your plug proceed as follows:

- Connect GREEN & YELLOW cord to terminal marked with a letter "E" or Earth symbol "⏏" or coloured GREEN or GREEN & YELLOW.
- Connect BROWN cord to terminal marked with a letter 'L' or coloured RED
- Connect BLUE cord to terminal marked with a letter 'N' or coloured BLACK

If this appliance is fitted with a plug which is moulded onto the electric cable (i.e. non-rewirable) please note:

1. The plug must be thrown away if cut from the electric cable. There is a danger of electric shock if it is subsequently inserted into a socket.
2. Never use the plug without the fuse cover fitted.
3. Should you wish to replace a detachable fuse carrier, ensure that the correct replacement is used (as indicated by marking or colour code).
4. Replacement fuse covers can be obtained from your local dealer or most electrical stockists.
5. The fuse in the plug must be replaced with one of the same rating (13amps) and this replacement must be ASTA approved to BS1362.

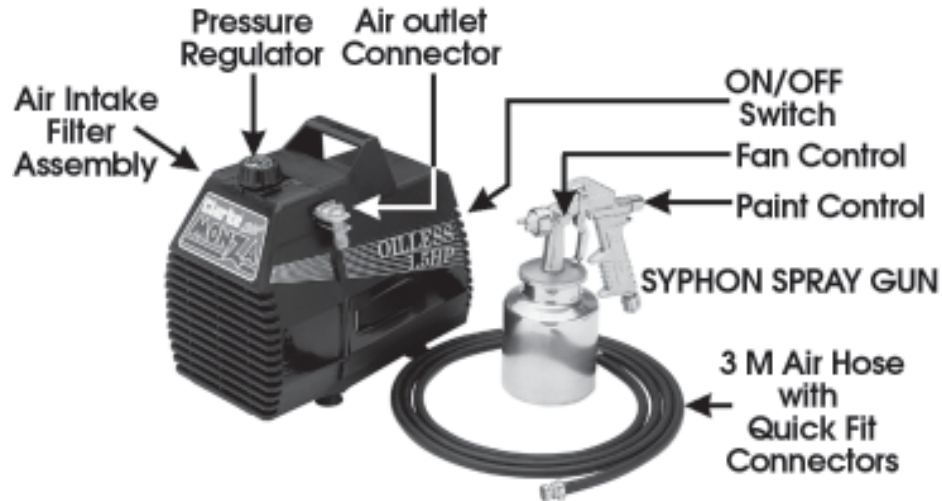
***If in doubt, consult a qualified electrician....DO NOT attempt repairs yourself***

### Fuse Replacement

The fuse in the plug must be ASTA approved to BS1362 and rated at **13 amps**



## MONZA SPRAY UNIT



## OPERATION

Before connecting your Monza to the mains supply, check that:-

- (A) The GREEN coloured ON/OFF Rocker switch is in the 'O' position.
- (B) The pressure regulator on top of the machine is in the low pressure or 'Start' position i.e. turned fully anticlockwise.

Connect the spraygun or the other tool which is to be used to the air outlet of the Monza using the air hose which is fitted with quick fit adaptors at each end. An air tight seal is formed by the rubber washer. Screw the connection together by hand, just sufficiently for a proper seal to be made - but do not over tighten. If the face of a rubber seal becomes damaged, then it may either be turned over or otherwise replaced.

**NOTE:**  
Please refer to the manual provided with the spraygun for its operation and maintenance.

## PAINT SPRAYING HINTS Cont.

### PAINT THINNING

For a professional looking finish paint must be thinned. If manufacturers recommendations on thinning are not available, the following can be used as a general guide.

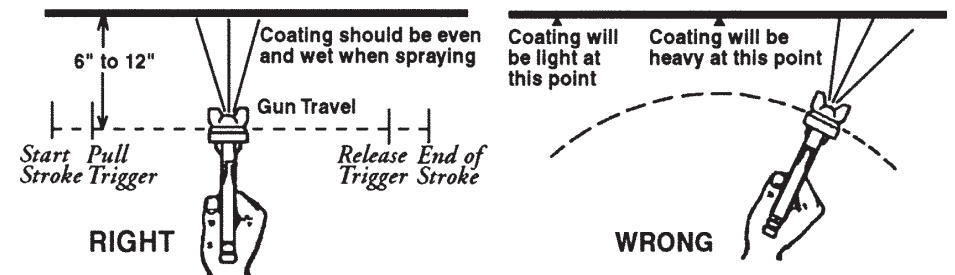
- Water based paints (emulsions) 10-20% water.
- Oil based paints (gloss) up to 10% thinners.
- Cellulose paints up to 50 % cellulose thinners.

### HANDLING THE GUN

the first requirement for a good resultant finish is the proper handling of the gun. The gun should be perpendicular to the surface being covered and moved parallel with it. The stroke should be started before the trigger is pulled and likewise, released before the stroke is ended. This gives accurate control of the gun and material.

The distance between the gun and the surface to be covered should be 6 to 12 inches depending on the material and atomising pressure. The material deposited should always be even and wet. Lap each stroke over the preceding stroke to obtain a uniform finish.

NOTE: To reduce overspray and obtain maximum efficiency, always spray with the lowest possible atomising air pressure.



## PAINT SPRAYING HINTS

### WARNING

*NEVER attempt to spray unless you are wearing suitable, approved respiratory and eye protection.*

*REMEMBER that some modern paints require specialist respiratory protection...always consult the paint manufacturers instructions.*

### 1. GENERAL PREPARATION

- Ensure that the area in which you will be spraying is clean and dust free.
- Connect spray gun to compressor via suitable flexible hose.
- With no paint in spray gun, test system for air leaks.
- Cover adjacent pieces of equipment to prevent overspray. Mask areas of the article not to be sprayed.
- Ensure surface to be painted is clean, dry and free from oil and dust. Check paint manufacturer's instructions for any special surface preparation required.

REMEMBER - TIME SPENT PREPARING SAVES TIME SPENT FINISHING

### 2. PAINT PREPARATION

- Achieve the correct paint viscosity. This should be done according to paint manufacturer's instructions, and will vary according to type of paint.
- Having mixed the paint thoroughly in a separate container, pour into the spray gun paint container through a fine filter.

DO NOT OVERFILL SPRAY GUN PAINT CONTAINER - three quarters full is maximum

- It is usually best to experiment with a couple of practice spray coats on a piece of material with the same type of surface as the article you wish to spray, eg. metal for a car body panel, wood for a piece of furniture etc.
- Some common problems:

PROBLEM	CAUSE	CORRECTION
Paint does not atomise (comes out in blobs)	Paint is too thick, air pressure is too low.	Add thinners. Increase air press. (not above 50 psi, unless specified by paint manuf.
Paint dries before hitting surface, leaving it dry with a rough texture	Paint is too thin. Air pressure is too high	Add more paint. Reduce air pressure
Finish is pitted like Orange peel	Air pressure too high or spray too close to work	Reduce air pressure, increase distance between gun and work.

Set the regulator to the desired operating pressure and then switch the machine ON at the rocker switch. The Monza should start immediately.

However, if at any time it hesitates to do this, then immediately trigger the spraygun or tool in order to release any built up pressure.

The air pressure may, within limitations, be increased by turning the control knob clockwise or decreased by turning it anticlockwise.

You may need to experiment to find the setting best suited for a particular job. When spraying paint, or similar material, it is usually best to operate at the lowest pressure which gives a satisfactory finish.

The syphon spraygun supplied with your Monza Air Compressor is most versatile and can be used to apply a variety of paint material. It features two basic controls:

- Paint control knob at the rear of the spraygun which adjusts the position of the main needle and consequently the volume of paint which can be sprayed. Minimum paint flow is achieved by having this control screwed in (clockwise) and vice versa.
- A fan spray control located just to the side of the spray head will alter the shape of the fan spray.

Refer to the spraygun manual for full details.

## SHUTTING DOWN THE COMPRESSOR

- Ensure that the ON/OFF switch is in the off 'O' position.  
**NEVER USE THE MAINS SWITCH TO STOP THE MOTOR.**
- Depress equipment trigger (spraygun) to release air from the hose and compressor before disconnecting from the machine.
- Switch off and disconnect from the mains supply.

## ROUTINE CARE AND MAINTENANCE

### CAUTION

Before carrying out any of this service work, always disconnect the Monza from the mains supply and if necessary allow the machine to cool down before starting work. Do not attempt any repair or adjustment yourself if you are uncertain as to how it should be done.

It is important to keep the Monza Air Compressor clean and this may be done with the help of a small soft brush and vacuum cleaner. In particular the air intake filter should be inspected periodically, so that it is always kept free of any dirt particles, which if not cleaned away will affect the performance of the machine. Also, particles must not at any time be allowed to pass through into the cylinder head as this would adversely affect the valves, including possible damage, and entail more extensive dismantling and cleaning.

### MONTHLY:

Remove and clean the air intake filter element by carefully prising off the plastic end cover (this should be carried out more frequently if the compressor is used in dusty atmospheres).  
With SPONGE ELEMENTS gently blow clean with compressed air or wash in solution of household detergent.

Rinse and dry thoroughly before re-fitting.  
Remember that a dirty filter prevents adequate aspiration and adversely affects the efficiency of your compressor.

**WARNING: Never operate the compressor without the air intake filter fitted.**

### YEARLY or 1000 HRS:

Replace the air intake element.

### EVERY 2 YEARS or 2000 HRS:

Have the intake and delivery valves checked - see your Clarke dealer.

### WARNING

Never unscrew a compressor connection while the machine is under pressure.  
Always make certain all air is expelled before doing so .

### SPRAYGUN

Please refer to the manual provided for its operation and maintenance

## FAULT FINDING

With considerate use, your CLARKE Air Compressor should provide you with long and trouble free service. Routine checks should be made on both the electrical supply as well as the compressed air lines and connections. If any fault appears, the reason for which is not immediately obvious, please contact your local CLARKE Dealer.

PROBLEM	PROBABLE CAUSE	REMEDY
The compressor stops and will not start again.	Bad connections.  Overload cutout switch has tripped.  Motor windings burnt out.	Check electrical connections. Clean and tighten as necessary.  Switch off and wait at least 5 minutes before switching on. Contact your local dealer for a replacement motor.
The compressor does not reach the set pressure and overheats easily.	Compressor head gasket blown or valve broken.	Contact your CLARKE dealer.  Replace Piston (contact your CLARKE dealer)
Compressor does not start.	Compressed air in cylinder head	Operate tool to expel all air, then Restart

**CAUTION Do not attempt any repair or adjustment if you are uncertain as to how it should be done. If you have any queries, contact your local CLARKE Dealer.**