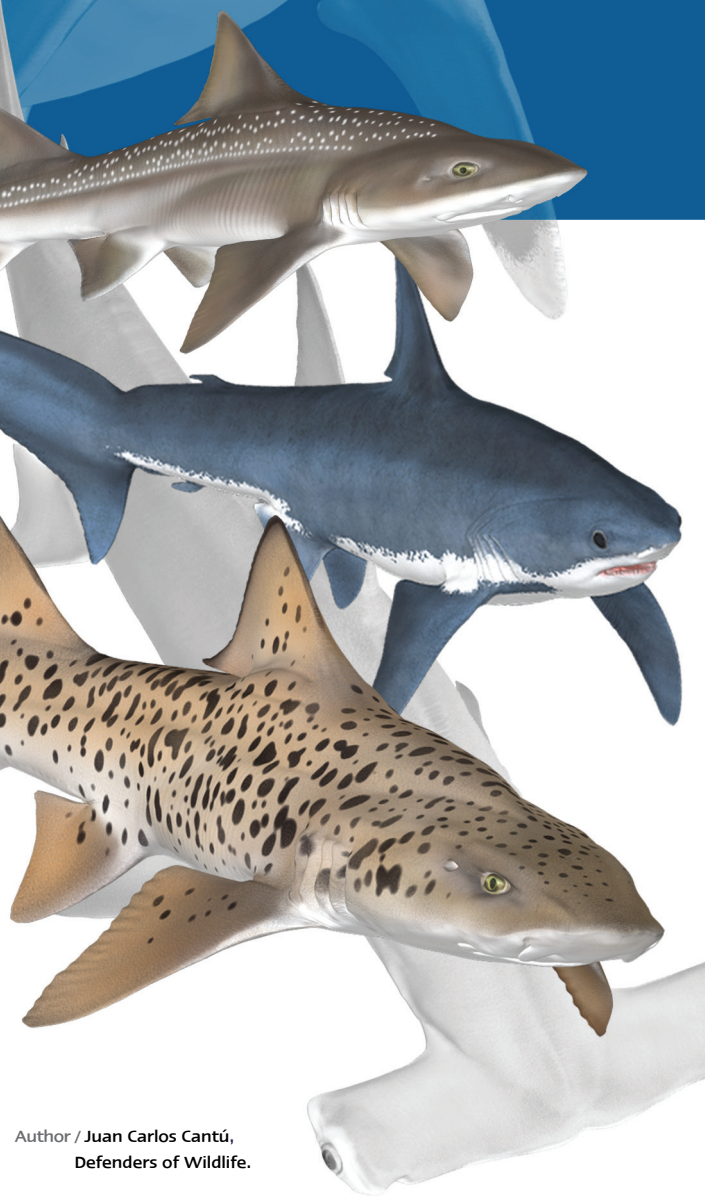


SHARKS

of South America-Pacific Ocean

SHARKS of South America - Pacific Ocean



Author / Juan Carlos Cantú,
Defenders of Wildlife.

Illustrations and Design / Razieli Levi Méndez



Sphyrna tiburo
Bonnethead shark

a. Shovel-shaped head.
b. Long dorsal fin.
c. Free tip on dorsal fin across from origin of pelvic fin.
d. Anal fin with partially concave margin.

Sphyrna corona
Mallethead shark

a. Mallet-shaped head with three slight indentations.
b. Free tip on dorsal fin above pelvic fin.
c. Anal fin with straight margin.

Prionace glauca
Blue shark

a. Pointed head and long snout.
b. Very long pectoral fin.
c. Dorsal fin with origin far behind pectoral fin.
d. Medium dorsal fin.
e. Low caudal keel.

Carcharhinus porosus
Smalltail shark

a. Pointed head and long snout.
b. Falciform and long dorsal fin.
c. Small pectoral fin.
d. Margin of 2nd dorsal fin above anal fin.
e. Very concave anal fin.

Sphyrna lewini
Scalloped Hammerhead

a. Head with 5 indentations.
b. Pectoral fin with dark spot on tip.
c. Pelvic fin with straight margin.
d. Free end tip on second dorsal fin, adjoining origin of caudal fin.

Sphyrna media
Scoophead shark

a. Head with three indentations.
b. Falciform dorsal fin.
c. Free tip on dorsal fin above pelvic fin.
d. Very concave anal fin.

Carcharhinus brachyurus
Bronze Whaler

a. Rounded head and long snout.
b. Small dorsal fins.
c. Long pectoral fin.
d. White stripe on dorsum.
e. Dark spots on fin tips.

Carcharhinus limbatus
Blacktip shark

a. Pointed head and long snout.
b. Dorsal fin with origin above pectoral fin.
c. Very black spots on fin tips.

Sphyrna zygaena
Smooth Hammerhead

a. Head without middle indentation, 4 on sides.
b. Straight margin on pelvic fin.
c. Free end tip on 2nd dorsal fin separate from origin of caudal fin.
d. Dark spot along caudal fin margin.

Rhizoprionodon longurio
Pacific Sharpnose shark

a. Pointed head and long snout.
b. Long upper labial furrow.
c. Origin of 2nd dorsal fin behind origin of anal fin.
d. Dark caudal fin margin.

Carcharhinus albimarginatus
Silvertip shark

a. Rounded head, long snout.
b. Interdorsal crest.
c. Distinctly white margins on dorsal, pectoral, pelvic, anal and caudal fins.

Carcharhinus leucas
Bull shark

a. Blunt head and short snout.
b. Large pectoral fin.
c. Large and triangular dorsal fin.
d. Dark spots on fin tips.
e. Low caudal keel.

Sphyrna mokarran
Great Hammerhead

a. Straight head, middle indentation.
b. Very long dorsal fin.
c. Very concave margin on anal fin.
d. High and falciform 2nd dorsal fin.

Nasolamia velox
Whitenose shark

a. Pointed head, long snout.
b. Dark snout tip with white margin.
c. Large adjacent nostrils.

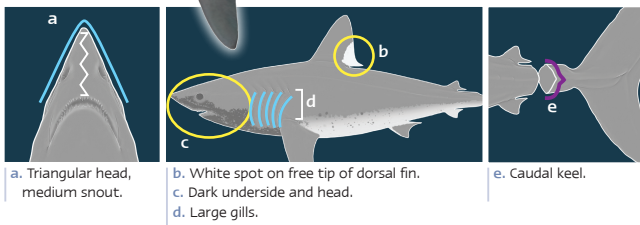
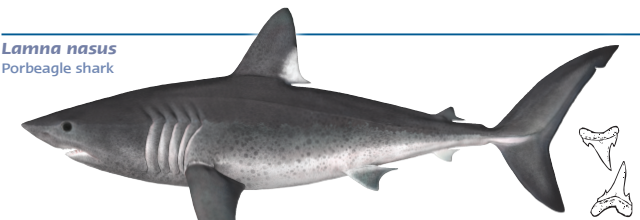
Carcharhinus galapagensis
Galapagos shark

a. Blunt head, long snout.
b. Medium dorsal fin with origin across pectoral fin apex.
c. Long and falciform pectoral fin.
d. Slight interdorsal crest.

Carcharhinus falciformis
Silky shark

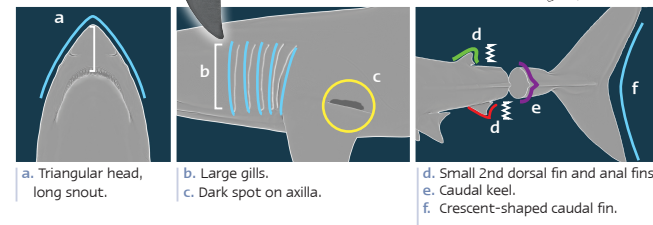
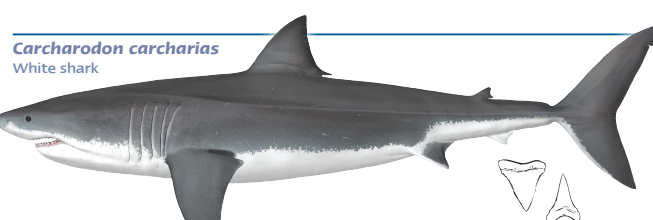
a. Rounded head and long snout.
b. Long and narrow pectoral fins.
c. Origin of dorsal fin behind pectoral fin.
d. Interdorsal crest.
e. Small 2nd dorsal fin.
f. Dark spots on fin tips.

Lamna nasus
Porbeagle shark



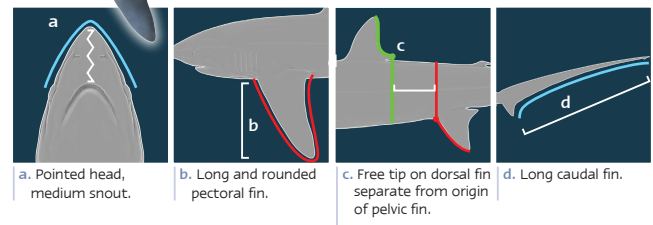
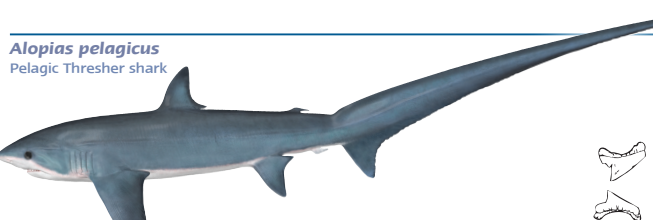
a. Triangular head, medium snout. b. White spot on free tip of dorsal fin. c. Dark underside and head. d. Large gills. e. Caudal keel.

Carcharodon carcharias
White shark



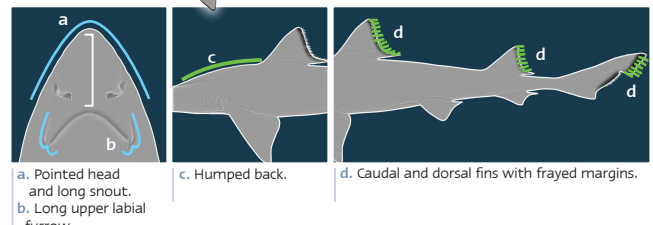
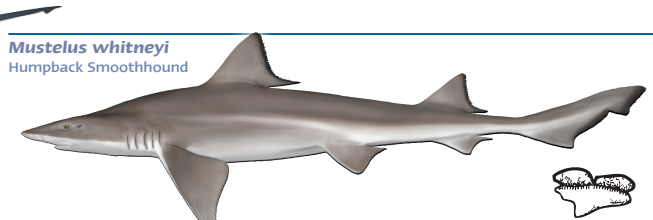
a. Triangular head, long snout. b. Large gills. c. Dark spot on axilla. d. Small 2nd dorsal fin and anal fins. e. Caudal keel. f. Crescent-shaped caudal fin.

Alopias pelagicus
Pelagic Thresher shark



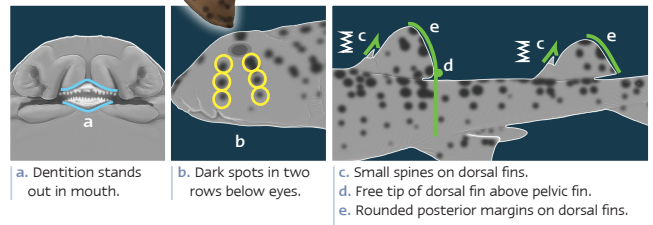
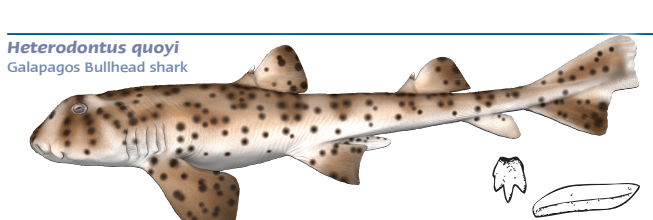
a. Pointed head, medium snout. b. Long and rounded pectoral fin. c. Free tip on dorsal fin separate from origin of pelvic fin. d. Long caudal fin.

Mustelus whitneyi
Humpback Smoothhound



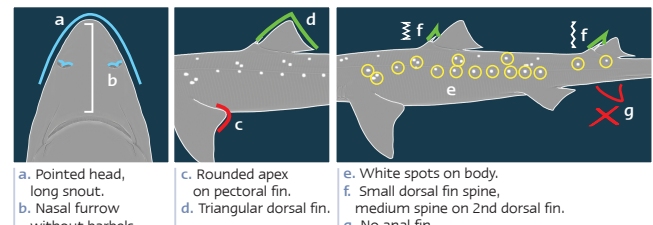
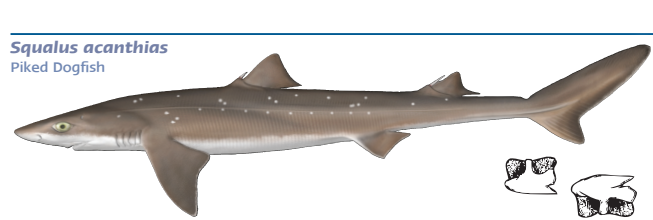
a. Pointed head and long snout. b. Long upper labial furrow. c. Humped back. d. Caudal and dorsal fins with frayed margins.

Heterodontus quoyi
Galapagos Bullhead shark



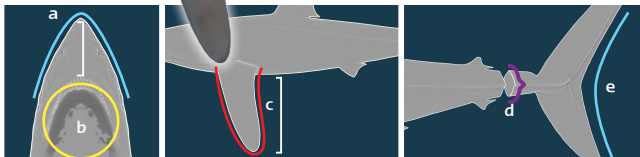
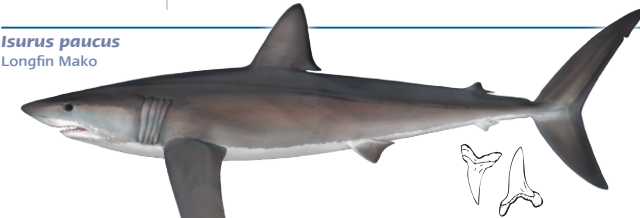
a. Dentition stands out in mouth. b. Dark spots in two rows below eyes. c. Small spines on dorsal fins. d. Free tip of dorsal fin above pelvic fin. e. Rounded posterior margins on dorsal fins.

Squalus acanthias
Piked Dogfish



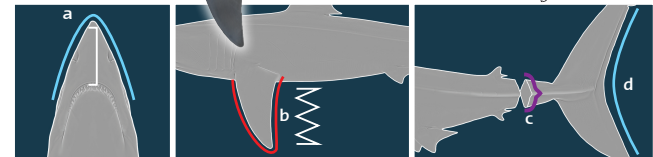
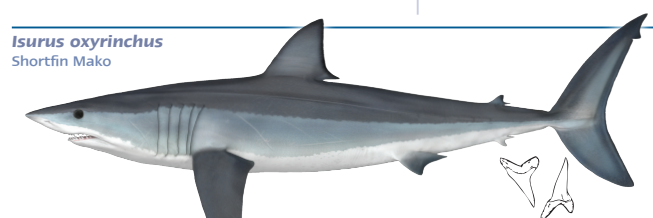
a. Pointed head, long snout. b. Nasal furrow without barbels. c. Rounded apex on pectoral fin. d. Triangular dorsal fin. e. White spots on body. f. Small dorsal fin spine, medium spine on 2nd dorsal fin. g. No anal fin.

Isurus paucus
Longfin Mako



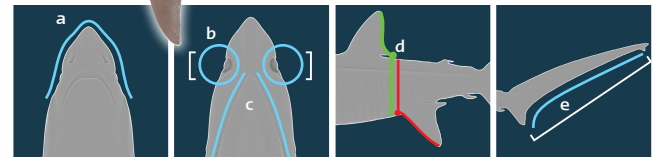
a. Triangular head and long snout. b. Dark spot around mouth. c. Long and rounded pectoral fin. d. High keel. e. Crescent-shaped caudal fin.

Isurus oxyrinchus
Shortfin Mako



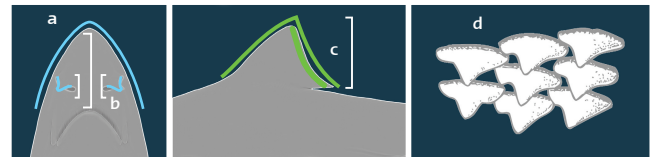
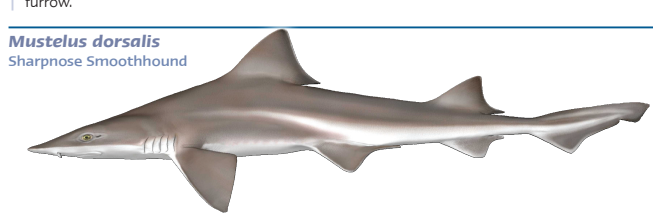
a. Triangular head and long snout. b. Short and pointed pectoral fin. c. High keel. d. Crescent-shaped caudal fin.

Alopias superciliosus
Bigeye Thresher shark



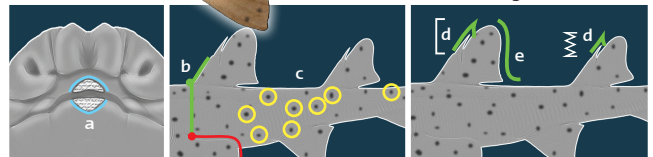
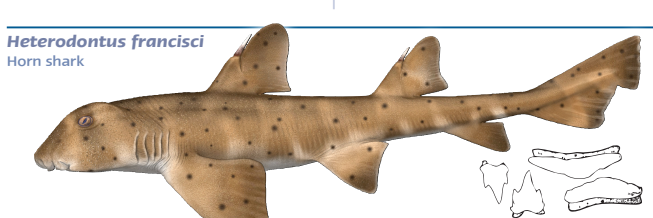
a. Pointed head. b. Big bulging eyes. c. Deep groove above gills. d. Free tip on dorsal fin across from origin of pelvic fin. e. Caudal fin as long as body.

Mustelus dorsalis
Sharprnose Smoothhound



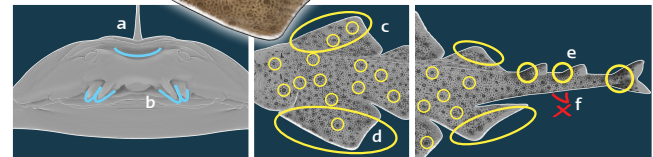
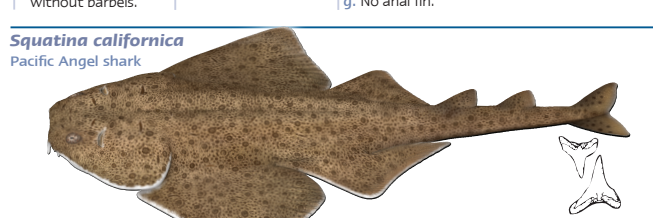
a. Pointed head, long snout. b. Long nasal furrows. c. Large triangular dorsal fin with non-frayed margin. d. Pavement-like teeth.

Heterodontus francisci
Horn shark



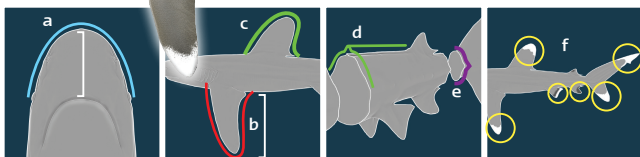
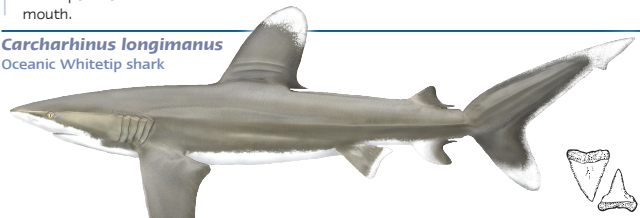
a. No dentition stands out in mouth. b. Dorsal fin origin above pectoral fin. c. Small dark spots on body. d. Large dorsal fin spine, small 2nd dorsal fin. e. Falciform dorsal fin.

Squatina californica
Pacific Angel shark



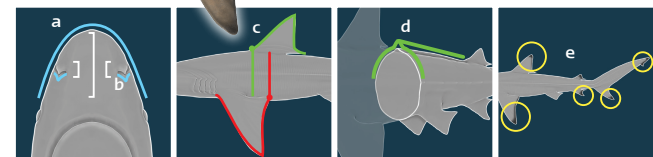
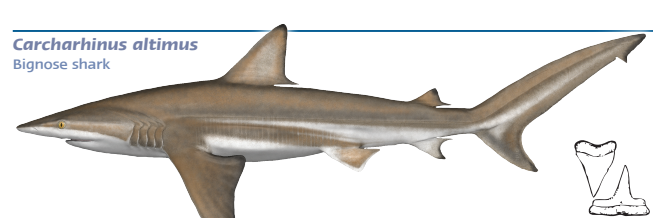
a. Concavity between eyes. b. Conical nasal barbels. c. Dark spots throughout body. d. White margin on fins. e. Darker spots at base of dorsal fins and caudal fin. f. No anal fin.

Carcharhinus longimanus
Oceanic Whitetip shark



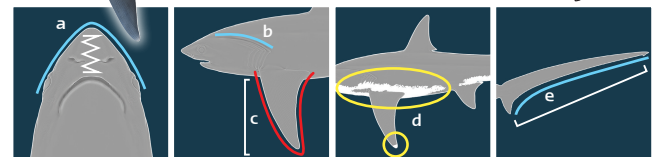
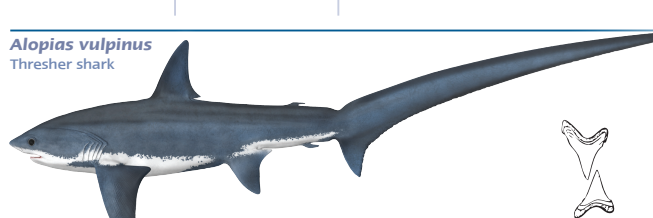
a. Rounded head and long snout. b. Large rounded pectoral fin. c. Rounded dorsal fin. d. Interdorsal crest. e. Low keel. f. Large white spots on fins.

Carcharhinus altimus
Bignose shark



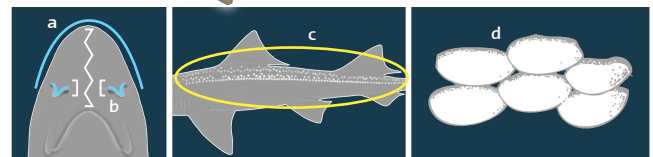
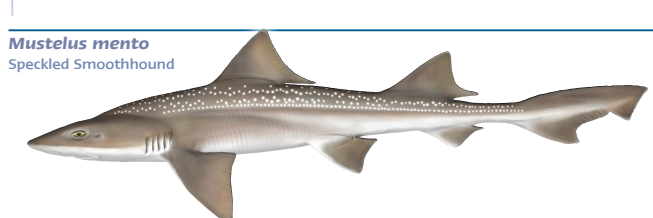
a. Rounded head and long snout. b. Long nasal furrows. c. Pointed dorsal fin with origin behind pointed pectoral fin apex. d. High interdorsal crest. e. Dark fin tips.

Alopias vulpinus
Thresher shark



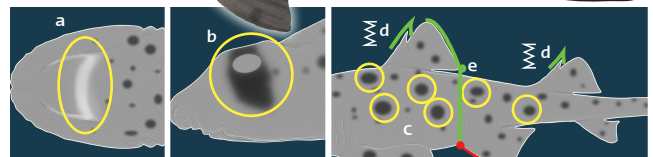
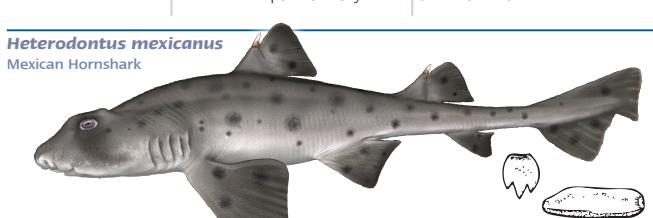
a. Pointed head and short snout. b. Slight groove above gills. c. Long pectoral fin. d. White spot above pectoral fin and light-colored tip. e. Caudal fin as long as body.

Mustelus mento
Speckled Smoothhound



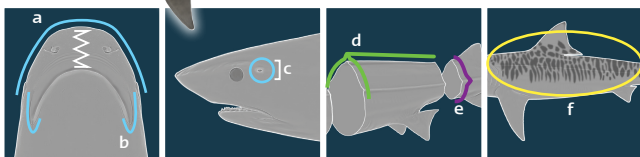
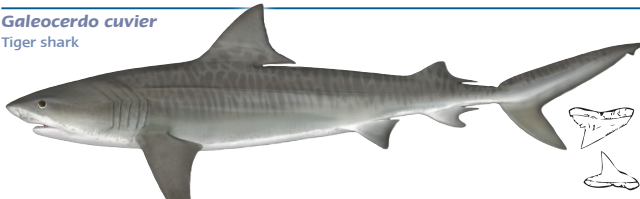
a. Rounded head and medium snout. b. Long nasal furrows. c. White speckles throughout body. d. Pavement-like teeth.

Heterodontus mexicanus
Mexican Hornshark



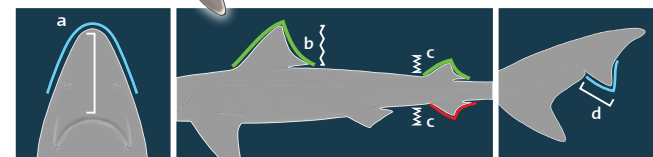
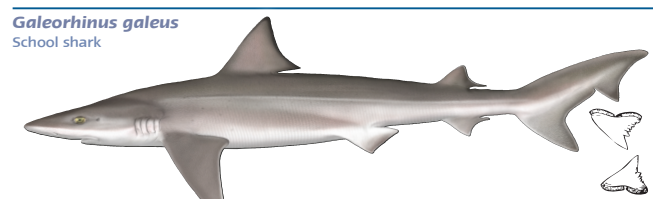
a. White stripe between eyes. b. Dark stripe below eyes. c. Large, dark spots. d. Small spines. e. Rounded dorsal fin margin and free tip above pelvic fin origin.

Galeocerdo cuvier
Tiger shark



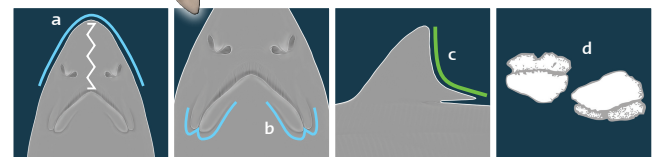
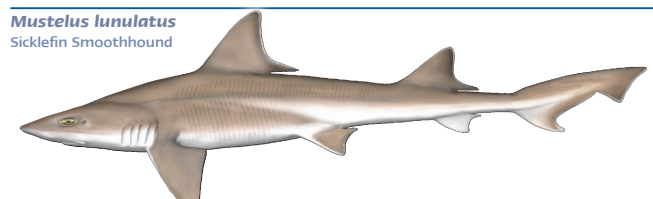
a. Blunt head and short snout. b. Long labial furrow. c. Large spiracle. d. High interdorsal crest. e. Low keel. f. Elongated dark spots on body.

Galeorhinus galeus
School shark



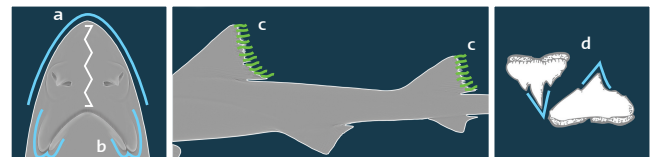
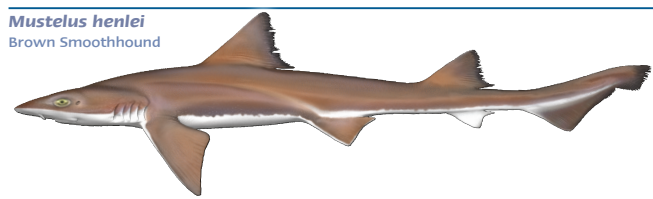
a. Pointed head, long snout. b. Medium triangular dorsal fin. c. 2nd dorsal fin same size as anal fin. d. Long tip on posterior lobe.

Mustelus lunulatus
Sicklefin Smoothhound



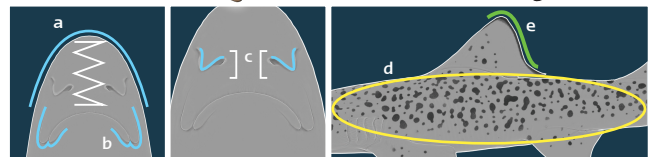
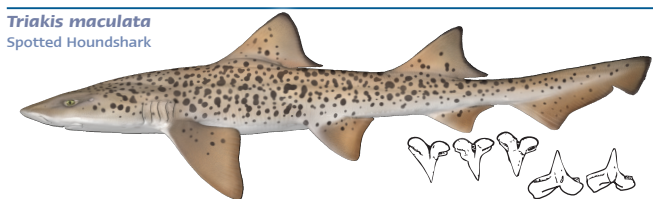
a. Pointed head, medium snout. b. Lower labial furrow longer than upper labial furrow. c. Falciform dorsal fin. d. Molariform teeth.

Mustelus henlei
Brown Smoothhound



a. Pointed head and medium snout. b. Long upper labial furrow. c. Frayed margins on dorsal fins. d. Asymmetric teeth with sharp cusps.

Triakis maculata
Spotted Houndshark



a. Rounded head, short snout. b. Long upper labial furrow. c. Long nasal furrows. d. Dark spots throughout body. e. Rounded margin of upper dorsal fin.

Partes del tiburón

