

Register your product and get support at
www.philips.com/welcome

SWW1890



EN User manual

PHILIPS

Contents

1	Important	4
	Safety	4

2	Your Philips Wireless HD Net Connect	5
	What is in the box	5

3	Overview	6
	The transmitter	6
	The receiver	6

4	Installation	8
	Connect the transmitter to your computer	8
	Connect the receiver to the HDTV set	8

5	Activate your Philips Wireless HD Net Connect and set up the link	9
	Turn on the power of your HDTV	9
	Activate the wireless link	9
	On screen display on HDTV	10

6	Mount your receiver	11
	Mount your receiver on the wall	11
	Mount your receiver on the back of the HDTV	12

7	Technical data	13
	Supported resolution	13
	Product specifications	13

8	Notice	14
	Declaration of conformity	14
	Compliance with EMF	14
	Environmental-Recycling the product	14
	Warranty information	15

9	Frequently asked questions	16
----------	-----------------------------------	-----------

1 Important

Safety



This 'bolt of lightning' indicates uninsulated material within your unit may cause an electrical shock. For the safety of everyone in your household, please do not remove product covering.

The 'exclamation point' calls attention to features for which you should read the enclosed literature closely to prevent operating and maintenance problems.

WARNING: To reduce the risk of fire or electric shock, this apparatus should not be exposed to rain or moisture and objects filled with liquids, such as vases, should not be placed on this apparatus.

Important Safety Instructions

- ① Read these instructions.
- ② Keep these instructions.
- ③ Heed all warnings.
- ④ Follow all instructions.
- ⑤ Do not use this apparatus near water.
- ⑥ Clean only with dry cloth.
- ⑦ Do not block any ventilation openings. Install in accordance with the manufacturer's instructions.
- ⑧ Do not install near any heat sources such as radiators, heat registers, stoves, or

other apparatus (including amplifiers) that produce heat.

- ⑨ Protect the power cord from being walked on or pinched, particularly at plugs, convenience receptacles, and the point where they exit from the apparatus.
- ⑩ Only use attachments/accessories specified by the manufacturer.
- ⑪ Unplug this apparatus during lightning storms or when unused for long periods of time.
- ⑫ Refer all servicing to qualified service personnel. Servicing is required when the apparatus has been damaged in any way, such as power-supply cord or plug is damaged, liquid has been spilled or objects have fallen into the apparatus, the apparatus has been exposed to rain or moisture, does not operate normally, or has been dropped.
- ⑬ Apparatus shall not be exposed to dripping or splashing.
- ⑭ Do not place any sources of danger on the apparatus (e.g. liquid filled objects, lighted candles).



Warning

- Use only the provided power adapter.

2 Your Philips Wireless HD Net Connect

Congratulations on your purchase and welcome to Philips!

To fully benefit from the support that Philips offers, register your product at www.philips.com/welcome.

What is in the box

Note

- Make sure you have all these items in the box. Contact your dealer for any missing or damaged items.



Transmitter



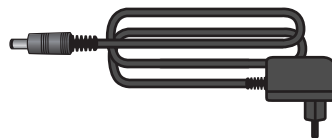
Receiver



HDMI cable (1.5 meters)



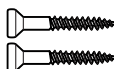
USB cable for the power supply of the transmitter (0.5 meters)



Power adapter for the receiver



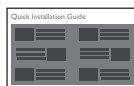
Anchors x 2



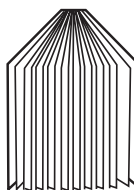
Screws x 2



Adhesive tape x 2



Quick start guide

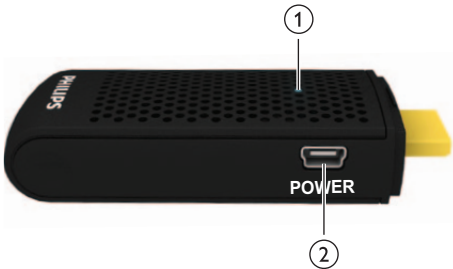


User manual

3 Overview

The transmitter

Front view



- | | | |
|---|----------------|---|
| 1 | LED indicator | Displays the connection status of the transmitter. |
| 2 | USB power jack | Connect the transmitter to the computer with the USB cable. |

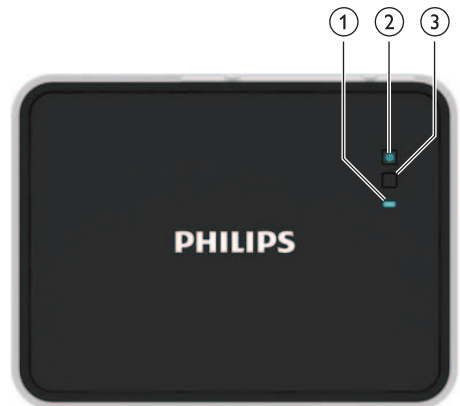
Top view



- | | | |
|---|-------------------|--|
| 1 | INFO button | Displays on the HDTV the connection status of the transmitter. |
| 2 | HDMI IN connector | Plug into the HDMI port of the computer. |

The receiver

Top view



- | | | |
|---|---------------------------------|---|
| 1 | LED indicator | Displays the status of the receiver. |
| 2 | Power button with LED indicator | Press to turn the receiver on/off or to standby mode. |
| 3 | INFO button | Displays on the HDTV the connection status of the receiver. |

Rear view



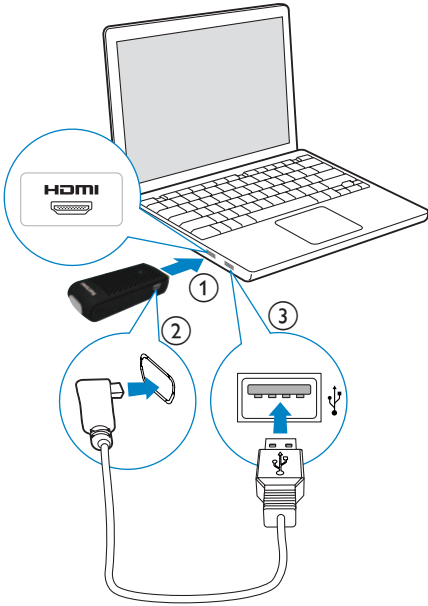
- | | | |
|---|--------------------|--|
| 1 | DC IN connector | Connect the power adapter of the receiver. |
| 2 | HDMI OUT connector | Connect to the HDTV with an HDMI cable |

The Philips Wireless HD Net Connect gives you a total wireless solution to enjoy the content from your computer on your HDTV. The transmitter can transmit an uncompressed video content up to 7 meters (without obstruction between the transmitter and receiver) without latency. The receiver can receive signals for viewing on your HDTV. All you need to do is to:

- Connect the transmitter to your computer.
- Connect the receiver to your HDTV set.

4 Installation

Connect the transmitter to your computer



Connect the transmitter to the computer using the supplied USB cable.

- 1 Connect the transmitter to the HDMI port of the computer.
- 2 Connect the small end of the USB cable to the **POWER** jack of the transmitter;

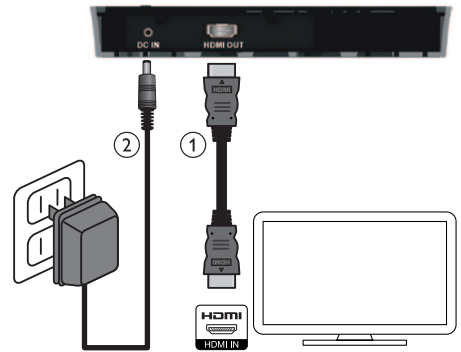
- 3 Connect the other end of the USB cable to your the USB port of your computer.

Note

- For some computers, the HDMI and USB ports are located in different sides of the computer.

- ↳ The power LED indicator of the transmitter flashes in blue, then turns into solid blue when the connection is established.

Connect the receiver to the HDTV set

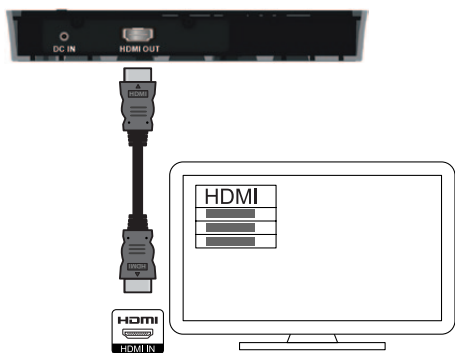


- 1 Connect the receiver with the supplied HDMI cable:
 - Connect one end of the HDMI cable to **HDMI OUT** connector of the receiver.
 - Connect the other end of the HDMI cable to the HDMI in connector of your HDTV.
- 2 Connect the power adapter to the receiver with the supplied power adapter:
 - Connect one end of the power adapter to the **DC IN** connector of the receiver.
 - Connect the other end of the power adapter to a power socket.

5 Activate your Philips Wireless HD Net

Connect and set up the link

Turn on the power of your HDTV



- 1 Go to the source menu under the settings menu of your HDTV.
- 2 Select the HDMI input to which the receiver is connected.

Activate the wireless link

Switch on the transmitter and receiver

When there is power supply for the transmitter and receiver, they are on automatically.

- ↳ The link between the transmitter and receiver is established.

Establish the link between the transmitter and receiver

- A flashing blue power LED is displayed until the signal link between the two units is established. Normally, it takes around 15-20 seconds for the link to establish successfully.
- When you unplug the power cord of the transmitter, the receiver enters standby mode after 5 minutes.
 - ↳ The power LED of the receiver lights up in red.
- The link between the transmitter and receiver re-established when you plug in the power cord of the transmitter again.
 - ↳ The power LED of the receiver flashes in blue.

LED indicator status of the transmitter

Power LED indicator	Status
Solid blue	The link is established.
Flashing blue	Linking is in progress.

LED indicator status of the receiver

Power LED	Status LED	Mode and status
Solid red	Off	Standby mode for power-saving
Flashing blue	Flashing	Setting up a Link between the transmitter and receiver
Solid blue	Flashing quickly	On mode but without input from the computer/source device
Solid blue	Flashing slowly	On mode with unrecognized video format
Solid blue	Solid blue	On mode with recognized video format



Note

- If the link is not established after 80 seconds, move the transmitter, receiver and HDTV closer to each other. The maximum transmission range is up to 7 meters without obstruction between the transmitter and receiver.
- If more than one set of Philips Wireless HD Net Connect is placed in the same room, make sure that the minimum distance among each one is 2 meters.
- Make sure the computer is on and switched the signal output to the HDMI.
- Make sure the video format is supported before the video is displayed, see the chapter on Technical data for information.

On screen display on HDTV

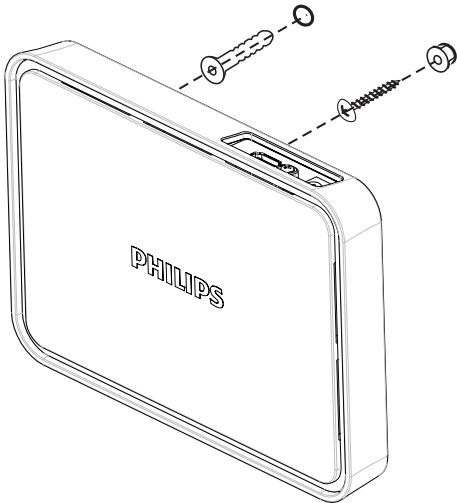
On screen display	Mode and status
zzz	Standby mode: it is a power-saving mode
....	Start up in progress: It takes 15-20 seconds.
x and 	Searching available channels: It occurs when the link cannot establish over 80 seconds after initialization.
HDMI CH1	On mode with unrecognized video format
HDMI CH1	On mode but without input from the computer/source device
HDMI CH1 1080P	On mode with recognized video format

6 Mount your receiver

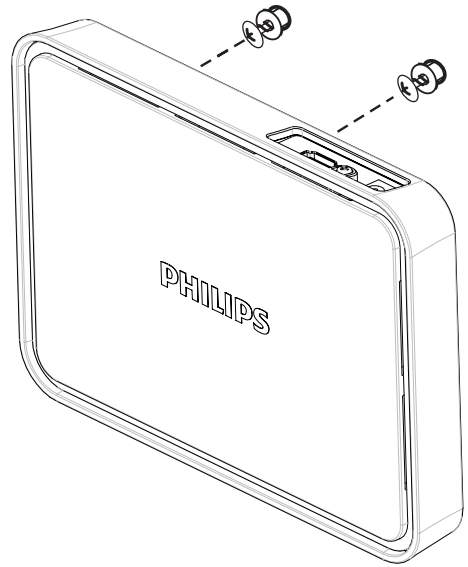
You can either mount the receiver on the wall or on the back of the HDTV.

Mount your receiver on the wall

- 1 Select a spot near the HDTV.
- 2 Drill two holes in the wall. Make sure that the distance between the two holes is 45mm and the diameter of the hole is 5 mm.
- 3 Punch the supplied two anchors into the two holes on the wall.
- 4 Put the two screws into the anchors and leave 3 mm to mount the receiver on.

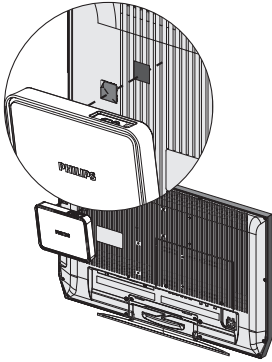


- 5 Hook the key holes at the back of the receiver on the screws.

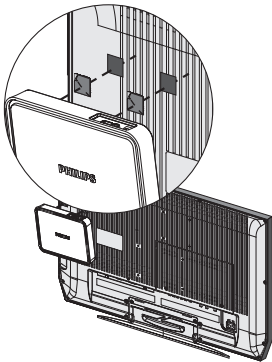


Mount your receiver on the back of the HDTV

- 1 Remove the white protective film from one of the supplied adhesive tapes.
- 2 Secure the glued side of the adhesive tape and attach it to the central bottom area of the receiver.



- 3 Select a flat location on the rear side of the HDTV.
- 4 Remove the white protective film from the other adhesive tape.
- 5 Secure the glued side of the adhesive tape and attach it to the selected rear side of the HDTV.



- 6 Align the adhesive tape on the receiver with the one on the HDTV until both the receiver and HDTV are mounted together firmly.

Note

- The use of adhesive tapes is an alternative mounting option when the receiver cannot be fixed.
- When you mount the receiver at the back of the HDTV, avoid blocking the ventilation holes of the HDTV.
- For safety reason, check regularly if the HDTV and receiver are mounted together firmly.

7 Technical data

Supported resolution

Video format timings	Resolution
Primary CEA video Timing	
480p	640x480p @ 59.94/60Hz
480p	720x480p @ 59.94Hz
480p	720x480p @ 60Hz
576p	720x576p @ 50Hz
720p	1280x720p @ 50Hz
720p	1280x720p @ 59.94/60Hz
1080i	1920x1080i @ 50Hz
1080i	1920x1080i @ 59.94/60Hz
1080p/60	1920x1080p @50Hz
1080p/60	1920x1080p@59.94/ 60Hz

Secondary CEA video Timing

1080p/24	1920x1080p @ 23.98/24Hz
1080p/24	1920x1080p @ 25Hz
1080p/24	1920x1080p @ 29.97/30Hz

Product specifications

General specification

Video resolution

HDMI input: 1080p, 1080i, 720p, 576p, 480p

Supported audio formats:

Digital audio: up to 6 Mbps AC3 and DTS

Analog audio: 32-96 KHz and 16-24 bits per audio sample

Transmission distance:

Maximum 7 meters without obstruction between the transmitter and receiver.

Antennas:

High performance internal antennas

Operating frequencies:

5.15 - 5.35 GHz / 5.470 - 5.725 GHz

Power supply:

Input: AC 100~ 240V

Output: DC 5V, 2A

Operating temperature:

0~40°C

Transmitter interfaces

A/V interfaces

HDMI input: One (Type A, Male)

Power interface

Power input: The USB cable connected to the USB jack of the computer

LEDs

Status LED: 1 x blue LED

Dimensions

30 x 83.3 x 17.5 mm (W x L x H)

Receiver interfaces

A/V interfaces

HDMI output: One (Type A)

Power interface

Power input: 5V DC jack

Switches

Front power switch: One

Info switch: One

LEDs

Power LED: 1 x LED (Two Tone: Blue & Red)

Status LED: 1 x blue LED

Signal quality status: On-screen display

Dimensions

194.8 x 146.8 x 31 mm (W x L x H)

8 Notice

Declaration of conformity

Hereby Philips Consumer Lifestyle, declares that the SWW1890 is in compliance with the essential requirements and other relevant provisions of Directive 1999/5/EC. You can find the Declaration of Conformity on www.p4c.philips.com.

EN 60950-1

Safety of Information Technology Equipment
EN 62311

Assessment of electronic and electrical equipment related to human exposure restrictions for electromagnetic fields (0 Hz-300 GHz)

EN 301 893

Broadband Radio Access Networks (BRAN); 5 GHz high performance RLAN; Harmonized EN covering essential requirements of article 3.2 of the R&TTE Directive

EN 301 489-1

Electromagnetic compatibility and Radio Spectrum Matters (ERM); ElectroMagnetic Compatibility (EMC) standard for radio equipment and services; Part 1: Common technical requirements

EN 301 489-17

Electromagnetic compatibility and Radio spectrum Matters (ERM); ElectroMagnetic Compatibility (EMC) standard for radio equipment and services; Part 17: Specific conditions for 2,4 GHz wideband transmission systems and 5 GHz high performance RLAN equipment

Hereby, Philips, declares that this SWW1890 is in compliance with the essential requirements and other relevant provisions of Directive 1999/5/EC.

Compliance with EMF

Koninklijke Philips Electronics N.V. manufactures and sells many products targeted at consumers, which, like any electronic apparatus, in general have the ability to emit and receive electromagnetic signals.

One of Philips' leading Business Principles is to take all necessary health and safety measures for our products, to comply with all applicable legal requirements and to stay well within the EMF standards applicable at the time of producing the products.

Philips is committed to develop, produce and market products that cause no adverse health effects. Philips confirms that if its products are handled properly for their intended use, they are safe to use according to scientific evidence available today.

Philips plays an active role in the development of international EMF and safety standards, enabling Philips to anticipate further developments in standardisation for early integration in its products.

Environmental-Recycling the product



When this crossed-out wheeled bin symbol is attached to a product it means that the product is covered by the European Directive 2002/96/EC. Please inform yourself about the local separate collection system for electrical and electronic products.

Please act according to your local rules and do not dispose of your old products with your normal household waste.

Correct disposal of your old product helps to prevent potential negative consequences for the environment and human health.

Environmental information

All unnecessary packaging has been omitted. We have tried to make the packaging easy to separate into three materials: cardboard (box), polystyrene foam (buffer) and polyethylene (bags, protective foam sheet.)

Your system consists of materials which can be recycled and reused if disassembled by a specialized company. Please observe the local regulations regarding the disposal of packaging materials and old equipment.

Warranty information

Warranty information can be found at: www.philips.com/support

9 Frequently asked questions

The power LED on the receiver is not lit up in red in standby mode.

Make sure that there is power supply for the receiver.

There is no video displayed on my TV screen.

- Make sure that the appropriate cables are selected and inserted to the transmitter, receiver, and HDTV.
- Make sure that you select HDMI as the input source on your HDTV.
- Check the power LED and status LED on the receiver:
 - **Flashing blue power LED:** Make sure that the transmission range between receiver and transmitter is not over 7 meters transmission distance (with no obstruction between the transmitter and receiver). Move the transmitter closer to the receiver.
 - **Solid blue power LED + slow and flashing source LED:**
 - 1) Make sure that the frame rate and video resolution of your A/V equipment are supported and conformed to the technical specification (see the chapter 'Technical data').
 - 2) Connect the computer to your TV with an HDMI cable to check the compatibility of the video format.
 - **Solid blue power LED + quick and flashing source LED:**
 - 1) Make sure that the proper cables are connected between the receiver and HDTV.
 - 2) Make sure that your computer connected to the transmitter is powered on.
 - 3) Make sure that the HDMI cable is connected between the HDTV and receiver.
 - 4) Make sure that the display setting of your computer is set to clone display or extended display.

Tip

- For information about how to set your computer to clone or extended display, see 'How can I connect to my computer to enable the external display?' described later in this chapter.
-

If the picture quality is poor, what do I do?

- Make sure that the video scale and resolution of your computer matches the resolution of your HDTV (See chapter 'Technical data').
 - Make sure that the transmission range between receiver and transmitter is not over 7 meters transmission distance (with no obstruction between the transmitter and receiver).
-

I cannot hear any sound or the sound is poor, what do I do?

- Make sure that the TV volume is adjusted correctly.
- Make sure that the TV volume is not set to minimum or the sound is not muted.
- Make sure that the audio volume of your computer is turned up.
- Make sure that the audio bit rate is supported.
- Make sure that the audio output of your computer is set to HDMI output.

 **Tip**

- See the chapter 'Product specification'.

How can I connect to my computer to enable the external display?

For Windows 7 operation system:

- 1 Press **⊞**, then **P**.
↳ The screen with options is displayed.
- 2 Select **Clone**, **Extend display** or **Project out** only for external display.

For Windows Vista operating system:

- 1 Click on **Start > Control Panel > Personalization > Display settings**.
- 2 Make sure that the display **2** is on with or without enabling **Extend the desktop onto this monitor**.
- 3 Make sure that the resolution is comply to the supported resolution (See the chapter 'Technical data', section supported resolution).

For Windows XP operating system:

- 1 On the computer screen, right click on your mouse.
- 2 Select **Properties > Settings**.
- 3 Make sure that the display **2** is on with or without enabling **Extend the desktop onto this monitor**.
- 4 Make sure that the resolution is comply to the supported resolution (See the chapter 'Technical data', section supported resolution).

 **Tip**

- For further information, click on **Start > Help and Support**, then enter 'change display settings' on the blank space provided.

For MAC operating system:

MAC operating system detects the external display equipment and switches to a better resolution automatically when you plug in the display cable to MAC series.



Note

- If the MAC operation system does not detect the external display automatically, click on **Apple > Preference > Detect Displays**.
- This product does not work with display port.

How can I change the audio setting of my computer to HDMI output?

For Windows7 and Vista operating system:

- 1 Click on **Start > Control Panel > Sound > Playback**.
- 2 Set the playback device to the corresponding TV set shown on the list.

For Windows XP operating system:

- 1 Click on **Start > Control Panel > Sounds and Audio Devices > Audio > Sound Playback**.
- 2 Set the **Default device** to HDMI device.



Tip

- For further information, click on **Start > Help and Support**, then enter 'change audio settings' on the blank space provided.



CE 0560 



© 2011 Koninklijke Philips Electronics N.V.
All rights reserved.

IFU_SWWW1890_EN_V1.3
WK11293