

SONY

Surveillance Camera Housings & Accessories Linecard



Introduction

Housings for security cameras provide protection to these valuable assets. Security camera housings are not limited to outdoor installations. Indoor housings for cameras installed within the buildings, warehouses, or even retail businesses are common.

Housings protect the cameras from environmental elements like dust, water, humidity and even damages from vandalism.

To select the right housing, it is fundamental to ensure the type of housings and the mounts is the correct fit for the purpose of application and also allowing flexibility before consideration of additional features.

Camera housings for all sizes of both Sony IP and Analog security cameras are available to support different needs of our customers and some are equipped with features such as heaters and/or blowers to manage tough environment conditions for outdoor applications.

Using this line card, you will be able to select the right housing for your Sony security camera. For more information, visit us at pro.sony-asia.com/security.

Contents Page

VA Series Housing.....	1 - 4
VA Series Accessories.....	5 - 7
TA Series Housing.....	8 & 12
TA Series Accessories.....	9 - 12
SO Series Accessories.....	13 - 14
Camera, Housing and Bracket table.....	15 - 16
Housing and accessory table.....	17

UNI-ONL7C2

Outdoor, pendant mount, clear dome housing with 24 VAC input and heater/blower.

Outdoor



UNI-ONL7T2

Similar to UNI-ONL7C2 except with a tinted dome cover.

Outdoor



UNI-ONL7C2W

Outdoor, pendant mount, clear dome housing with 24 VAC input and heater/blower. Include wireless antenna cable (must be used with SNCA-CFW & SNCA-AN1), clear lower bubble.

Outdoor



UNI-ONL7T2W

Outdoor, pendant mount, clear dome housing with 24 VAC input and heater/blower. Include wireless antenna cable (must be used with SNCA-CFW & SNCA-AN1), tinted lower bubble.

Outdoor



Features and Benefits

- Easy camera installation in an IP66 rated dome
- Designed to support the SNC-EP/ER series cameras and SNC-WR series cameras in outdoor installations
- Constructed of durable engineered plastic top, 94VO, with UV protected lower dome
- Cast aluminium pendant mount is standard
- Optically clear, 118" (3mm) thick aspheric polycarbonate dome
- 24 Hour fan operation for effective heating and condensation protection
- Thermostatically controlled 24VAC heater
- Separate power input for H&B and camera power

Model	Description	Rating	Operating temperature	Operating voltage	Applicable Models	Colour
UNI-ONL7C2 UNI-ONL7T2 UNI-ONL7C2W UNI-ONL7T2W	Outdoor Dome Camera Housing	IP66	-29 to +50°C	24VAC	SNC-WR630/WR600 SNC-EP/ER series	Dupont SKY white PFW-510-S9

UNI-INL7C2

Indoor, pendant mount, clear dome housing without any electrical power or wiring

Indoor



UNI-INL7T2

Similar to UNI-INL7C2 except with a tinted lower dome

Indoor



Features and Benefits

- Easy camera installation
- Designed for the SNC-EP/ER Series cameras
- Constructed of Durable engineered plastic top, 94VO, with UV protected lower dome
- Cast aluminium pendant mount is standard
- Optically clear, 118" (3mm) thick aspheric polycarbonate dome

Model	Description	Rating	Operating temperature	Operating voltage	Applicable Models	Colour
UNI-INL7C2 UNI-INL7T2	Indoor dome camera housing	N/A	0 to 50°C	-	SNC-EP/ER series	Dupont SKY white PFW-510-S9

UNI-ORL7C2

Outdoor, pendant mount, clear dome housing with 24 VAC input and heater/blower. (Vandal resistant)

Outdoor Vandal Resistant



UNI-ORL7T2

Similar to UNI-ORL7C2 except with a tinted lower dome (Vandal resistant)

Outdoor Vandal Resistant



UNI-ORL7C2W

Outdoor, pendant mount, clear dome housing with 24 VAC input and heater/blower. Include wireless antenna cable (must be used with SNCA-CFW & SNCA-AN1) (Vandal resistant)

Outdoor Vandal Resistant



UNI-ORL7T2W

Similar to UNI-ORL7C2W except with a tinted lower dome (Vandal resistant)

Outdoor Vandal Resistant



Features and Benefits

- Easy camera installation in an IP66 outdoor dome
- Offers IK-10 level protection for the SNC-EP/ER series cameras and WR series cameras.
- Outdoor dome, UV protected
- Strong cast aluminium top and trim ring for IK10 rated protection
- Optically clear 118" (3mm) thick aspheric polycarbonate dome
- Thermostatically controlled 24VAC heater
- 24 Hour fan operation for effective heating and condensation protection
- Separate power input for H&B and camera power
- Pendant mount, 1½" NPT quick connect coupling

Model	Description	Rating	Operating temperature	Operating voltage	Applicable Models	Colour
UNI-ORL7C2 UNI-ORL7T2 UNI-ORL7C2W UNI-ORL7T2W	Heavy duty, outdoor dome housing	IP66 IK10	-29 to +50°C	24VAC	SNC-WR630/WR600 SNC-EP/ER series	Dupont SKY white PFW-510-S9
UNI-HRL7C2 UNI-HRL7T2	Indoor dome housing	IK10	-29 to +50°C	N/A	SNC-EP/ER series	Dupont SKY white PFW-510-S9

UNI-HRL7C2

Indoor, pendant mount, clear dome housing without any electrical power or wiring. (Vandal resistant)

Indoor Vandal Resistant



UNI-HRL7T2

Similar to UNI-HRL7C2 except with a tinted lower dome (Vandal resistant)

Indoor Vandal Resistant



UNI-OPL7C2

Outdoor, pressurized clear dome housing with 24VAC input and heater/blower

Outdoor Pressurized



Features and Benefits

- Easy camera installation in an IP67 rated dome
- Designed to support the SNC-EP/ER Series cameras and WR Series cameras in outdoor installations
- Constructed of durable engineered plastic top, 94VO, with UV protected lower dome
- Cast aluminium pendant mount is standard
- Includes both Schrader and pressure relief valves
- Pressurized to 7psi, able to maintain pressure for 2-3 years
- Optically clear, 118" (3mm) thick aspheric polycarbonate dome
- 24 Hour fan operation for effective heating and condensation protection
- Thermostatically controlled 24VAC heater
- Separate power input for H&B and camera power

Model	Description	Rating	Operating temperature	Operating voltage	Applicable Models	Colour
UNI-OPL7C2 UNI-OPL7T2	Outdoor dome camera housing	IP67	-29 to +50°C	24VAC	SNC-WR630/WR600 SNC-EP/ER Series	Dupont SKY white PFW-510-S9

UNI-OSL7C2

Outdoor vandal resistant surface mount housing, clear dome, 24vac input, with H&B.

Outdoor Vandal Resistant



Features and Benefits

- 7-inch vandal resistant rugged dome for easy installation and servicing from below ceiling.
- Designed for Sony's EP/ER and WR series cameras.
- The camera can be mounted on either side of the fixed camera bracket.
- Includes a decorative trim ring with quick-release pressure springs.
- Plenum rated metal top.
- The product is available with a clear or tinted lower dome.

Model	Description	Rating	Operating temperature	Operating voltage	Applicable Models	Colour
UNI-OSL7C2 UNI-OSL7T2	Outdoor Vandal Resistant surface mount camera housing	IP66 IK10	-29 °C to +50 °C	24 VAC	SNC-WR630/WR600 SNC-ER/EP Series	Dupont SKY white PFW-510-S9

SNC-UNIH/1

13" Indoor/Outdoor aluminum housing with clear window and hinged opening, 24VAC heater and blower

Outdoor Indoor



Features and Benefits

- Side hinges for ease of access when focusing and adjusting the camera
- Accepts the fixed type SSC analog cameras
- Built-in thermostatically controlled 24VAC heater/blower (SNC-UNIH/1)

Model	Description	Rating	Operating temperature	Operating voltage	Applicable Models	Colour
SNC-UNIH/1	Fixed housing, c/w sunshield, heater, wall bracket	IP54	-29 to 48°C	24VAC, 50Hz	SNC-VB635, SNC-VB600, SNC-VB630, SNC-EB600B, SNC-EB630B, SNC-EB600, SNC-EB630, SSC Analog Box Cameras	Dupont SKY white PFW-510-S9
SNC-UNI	Fixed housing, c/w sunshield, wall bracket Without H&B	N/A	NA	NA	SNC-VB635, SNC-VB600, SNC-VB630, SNC-EB600B, SNC-EB630B, SNC-EB600, SNC-EB630, SSC Analog Box Cameras	Dupont SKY white PFW-510-S9

SNC-UNI

13" Indoor aluminum housing with clear window and hinged opening

Indoor

UNI-IRBC3

Indoor Vandal-Resistant Fixed Camera Housing

Indoor Vandal Resistant



Features and Benefits

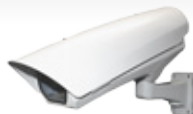
- Meets NEMA type 4X standards.
- IP66 rated for superior moisture and dirt ingress protection.
- Accommodates wide-angle lenses up to 135°.
- Standard with hinged pass-thru wall / pole mount for easy installation.
- Hinged wall mount allows for easy installation.
- IK10 impact rated.

Model	Description	Rating	Operating temperature	Operating voltage	Applicable Models	Colour
UNI-IRBC3	Indoor Vandal-Resistant Fixed Camera Housing	IP66 NEMA 4X IK10	NA (Reference Camera Specifications)	NA	SNC-VB600, SNC-VB630, SNC-EB600B, SNC-EB630B, SNC-EB600, SNC-EB630, SSC Analog Box Cameras	Dupont SKY white PFW-510-S9

UNI-ORBC2

Outdoor Vandal-Resistant Fixed Camera housing with feed-thru wall/pole mount, 24vac or 12vdc input, heater & blower and Sony sunshield

Outdoor Vandal Resistant



Features and Benefits

- Meets NEMA type 4X standards.
- IP66 rated for superior moisture and dirt ingress protection.
- Power input of 24 VAC or 12 VDC with 24 VAC or 12 VDC output to the camera .
- Accommodates wide-angle lenses up to 135°.
- Standard with hinged pass-thru wall / pole mount for easy installation.
- IK10 impact rated.
- Adjustable Sunshield.

Model	Description	Rating	Operating temperature	Operating voltage	Applicable Models	Colour
UNI-ORBC2	Outdoor Vandal-Resistant Fixed Camera Housing	IP66 NEMA 4X IK10	-40 °C to +50 °C	12 VDC / 24 VAC	SNC-VB600, SNC-VB630, SNC-EB600B, SNC-EB630B, SNC-EB600, SNC-EB630, SSC Analog Box Cameras	Dupont SKY white PFW-510-S9

UNI-OPBC2

Pressurized tubular Vandal-Resistant Fixed Camera housing, with feed-thru wall/pole mount, 24vac or 12vdc input, heater & blower and sunshield

Outdoor Vandal Resistant



Features and Benefits

- Powder coated aluminum and 316 stainless steel hardware.
- Pressurized IP67 rated for superior moisture and dirt ingress protection.
- Meets NEMA type 6P standards.
- 5-7psi pressure relief valve eliminates over pressurization.
- Schraeder valve to fill the housing with Nitrogen or another clean stable gas.
- Power input of 24VAC or 12 VDC with 24VAC or 12VDC output to the camera.
- PED compliant
- IK10 impact rated.
- Adjustable Sunshield.

Model	Description	Rating	Operating temperature	Operating voltage	Applicable Models	Colour
UNI-OPBC2	Fixed Outdoor Environmental Pressurized Tubular Housing	IP67 IK10	-40 °C to +50 °C	12 VDC / 24 VAC	SNC-VB600, SNC-VB630, SNC-EB600B, SNC-EB630B, SNC-EB600, SNC-EB630, SSC Analog Box Cameras	Dupont SKY white PFW-510-S9

UNI-OPBC6

Pressurized tubular Vandal-Resistant Fixed Camera housing, with feed-thru wall/pole mount, heater & blower and sunshield; dynamic power allocation PoE input, 30 watt midspan included, supports .af PoE cameras

Outdoor Vandal Resistant



Features and Benefits

- Meets NEMA type 6P and IP67 rated for superior moisture and dirt ingress protection.
- Supports PoE with Dynamic Power Allocation (DPA):
 - Supports PoE Plus IEEE802.3at which powers the heater, blower, and camera.
 - DPA ensures maximum power to the camera in all conditions.
- IK10 impact rated.

Model	Description	Rating	Operating temperature	Operating voltage	Applicable Models	Colour
UNI-OPBC6	Pressurized Tubular Housing with dynamic power allocation PoE input	IP67 IK10	-40 °C to +50 °C	PoE	SNC-VB600, SNC-VB630, SNC-EB600B, SNC-EB630B, SNC-EB600, SNC-EB630	Dupont SKY white PFW-510-S9

UNI-ID7C3

Clear dome recessed ceiling housing for PTZ Camera

Indoor



UNI-ID7T3

Tinted dome recessed ceiling housing for PTZ Camera

Indoor



Features and Benefits

- 7" polycarbonate dome for easy installation and servicing from below the ceiling
- Housing extends only 3.5" below ceiling
- For the SNC-EP/ER series cameras and WR series cameras
- Includes a decorative trim ring with quick-release pressure springs
- Optically clear .118" (3mm) thick aspheric polycarbonate dome

Model	Description	Rating	Operating temperature	Operating voltage	Applicable Models	Colour
UNI-ID7C3	Clear dome in ceiling bracket	N/A	N/A	NA	SNC-WR630/WR600 SNC-EP/ER Series	Clear
UNI-ID7T3	Tinted dome in ceiling bracket	N/A	N/A	N/A	SNC-WR630/WR600 SNC-EP/ER Series	Tinted

UNI-IF7C3

Indoor recessed ceiling housing, clear lower dome, white trim ring for fixed box cameras

Indoor



UNI-IF7T3

Similar to UNI-IF7C3 except with a tinted lower dome

Indoor



Features and Benefits

- Maximum camera/lens angle of 8 inches.
- 7-inch dome for easy installation and servicing from below ceiling.
- The clear (UNI-IF7C3) and tinted (UNI-IF7T3) housings extend only 3.5 inches below ceiling.
- The camera can be mounted on either side of the fixed camera bracket.
- Includes a decorative trim ring with quick-release pressure springs.
- UL rated for drop ceiling applications.

Model	Description	Rating	Operating temperature	Operating voltage	Applicable Models	Colour
UNI-IF7C3	Recessed Ceiling housing with clear dome for box cameras	N/A	N/A	NA	EB630B, EB630, EB600, EB600B, SNC-VB600, SNC-VB630, SSC Analog Box Cameras	Clear
UNI-IF7T3	Recessed Ceiling housing with tinted dome for box cameras	N/A	N/A	N/A	EB630B, EB630, EB600, EB600B, SNC-VB600B, SNC-VB600, SNC-VB630, SSC Analog Box Cameras	Tinted

UNI-OFL7C2

Outdoor Vandal resistant recessed dome housing for PTZ Camera with clear dome, 24vac input for camera and H&B

Outdoor Vandal Resistant



UNI-OFL7T2

Similar to UNI-OFL7C2 except with a tinted lower dome

Outdoor Vandal Resistant



Features and Benefits

- Vandal resistant, heavy duty construction, rated to IK10 standards.
- Designed to be water and dust tight to IP66 standards.
- Plenum rated for fire resistant ceiling applications.
- Easy camera installation and servicing from below the ceiling or overhang.
- Includes a decorative trim ring with safety lanyard and captive security fasteners.
- RoHS, WEEE, UL, CE compliant.

Model	Description	Rating	Operating temperature	Operating voltage	Applicable Models	Colour
UNI-OFL7C2 UNI-OFL7T2	Outdoor Vandal Resistant Recessed Dome camera housing	IP66 IK10	-29 °C to +50 °C	24 VAC	SNC-WR630/WR600C SNC-ER/EP Series	Dupont SKY white PFW-510-S9

UNI-WMB1

Gooseneck wall mount bracket for VA series dome housing



Features and Benefits

- Aluminium wall mount bracket

Model	Description	Applicable/compatible housing/models	Optional Accessories	Colour
UNI-WMB1	Gooseneck wall mount	All VA Series Dome Housing SNC-RH164 SNC-ER585H SNC-WR630/WR600 SNC-WR632C/WR602C SSC-SD26/36P	UNI-CMA1 UNI-PMA1 UNI-WMBB1 UNI-PBU1	Dupont SKY white PFW-510-S9

UNI-WMB3

Gooseneck wall mount bracket for VA series dome housing



Features and Benefits

- Gooseneck bracket for wall mounting
- Outdoor or Indoor use

Model	Description	Applicable/compatible housing/models	Optional Accessories	Colour
UNI-WMB3	Gooseneck wall mount bracket	SNC-ER585H, SNC-WR630/WR600, SNC-WR632C/WR602C, SSC-SD26/36P, VA Series Dome Housing	UNI-PMA1 UNI-CMA1 UNI-PBU1 UNI-WMBB1	Dupont SKY white PFW-510-S9

UNI-RMB1

Roof Mount (Parapet) bracket for VA series dome housing



Features and Benefits

- All aluminium construction
- Durable powder coat finish
- 1½" pipe thread for quick and easy mounting
- 50 lb load rating

Model	Description	Applicable/compatible housing/models	Colour
UNI-RMB1	Parapet Mount	All VA Series Dome Housing	Dupont SKY white PFW-510-S9

UNI-MDB3

Pendant/ Wall Mount Minidome bracket for outdoor Minidome



Features and Benefits

- Wall mount or pendant mount for outdoor Minidome Cameras
- All aluminium construction
- 1" pipe thread for pendant mounting
- Gooseneck bracket for wall mounting
- Indoor or outdoor use

Model	Description	Applicable/compatible housing/models	Optional Accessories	Colour
UNI-MDB3	Wall Mount or Pendant Mount for Minidome	SNC-VM632RC/VM602RC SNC-EM632RC/EM602RC	UNI-PMA1 UNI-CMA1 UNI-PBU1 UNI-WMBB1	Dupont SKY white PFW-510-S9

UNI-CMA1

Corner Mount Adaptor



Features and Benefits

- An aluminium corner mount bracket with female inserts, which can accommodate the UNI-WMB1, UNI-WMB3, and UNI-MDB3

UNI-PMA1

Pole Mount Adaptor



Features and Benefits

- An aluminium pole mount adaptor

Model	Description	Applicable/compatible housing/models	Colour
UNI-CMA1	Corner Mount bracket, 22Kg max load rating	UNI-WMB1 UNI-WMB3 UNI-MDB3	Dupont SKY white PFW-510-S9
UNI-PMA1	Pole mount adaptor bracket		

UNI-WMBB1

Aluminium wall/pole mount back box



Features and Benefits

- wall/pole mount back box with mounting straps

Model	Description	Applicable/compatible housing/models	Colour
UNI-WMBB1	Aluminium wall/pole mount back box	UNI-MDB3 UNI-WMB1 UNI-WMB3	Dupont SKY white PFW-510-S9

UNI-PBU1

Power Block Unit



Features and Benefits

- Rugged cast aluminium NEMA 4 enclosure
- Meets IP 66 standards to prevent the induction of minute particles
- Designed for direct conduit connections
- Provides 4A of power at 24VAC
- Pole mounting clips included

Model	Description	Applicable/compatible housing/models	Output Voltage	Input Voltage	Colour
UNI-PBU1	IP66 rated power supply with bracket connection	UNI-WMB1 UNI-WMB3 UNI-MDB3	24VAC for cameras	110VAC / 230VAC (selectable)	Dupont SKY white PFW-510-S9

UNI-BBB1

Aluminium back box with pole mount adaptor for out door bullet camera



Features and Benefits

- Wall / Pole mount adaptor for Mini Dome and bullet camera

Model	Description	Applicable/compatible housing/models	Colour
UNI-BBB1	Wall/ Pole mount bracket	SNC-VB632D SNC-EB602R SNC-EB632R	Dupont SKY white PFW-510-S9

UNI-BBB2

Aluminium back box with pole mount adaptor for out door bullet camera



Features and Benefits

- Wall / Pole mount adaptor for Mini Dome and bullet camera

Model	Description	Applicable/compatible housing/models	Colour
UNI-BBB2	Wall/ Pole mount bracket	SNC-VM632RC SNC-VM602RC SNC-EM632RC SNC-EM602RC	Dupont SKY white PFW-510-S9

UNI-WMB4

Gooseneck wall mount bracket for VA series dome housing



Features and Benefits

- Wall / Pole mount adaptor for Mini Dome and bullet camera

Model	Description	Applicable/compatible housing/models	Colour
UNI-WMB4	Aluminium wall/pole mount back box	UNI-MDPHM, UNI-MDPDH180, UNI-MDPX	Dupont SKY white PFW-510-S9

UNI-MDPHM

Pendant Shroud bracket



Features and Benefits

- Pendant Shroud bracket

Model	Description	Applicable/compatible housing/models	Colour
UNI-MDPHM	Pendant Shroud bracket	SNC-HM662	Dupont SKY white PFW-510-S9

UNI-MDPDH180

Pendant mount for outdoor mini domes



Features and Benefits

- Pendant mount for outdoor mini domes

Model	Description	Applicable/compatible housing/models	Colour
UNI-MDPDH180	Pendant mount for outdoor mini domes cameras	EM602RC/EM632RC/VM602RC/VM602RC	TBC

UNI-MDPX

Pendant mount for indoor minidomes



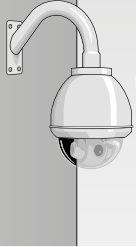
Features and Benefits

- Wall / Pole mount adaptor for Mini Dome and bullet camera

Model	Description	Applicable/compatible housing/models	Colour
UNI-MDPX	Aluminium wall/pole mount back box	UNI-MDPHM, UNI-MDPDH180	TBC

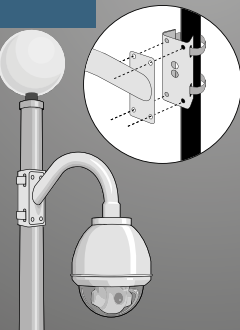
UNI-WMB1 Wall Mount

- Mounting Accessories Needed:**
- UNI-WMB1-Gooseneck Wall Mount
 - Outdoor Pendant Housing



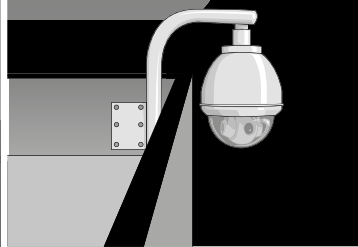
UNI-PMA1 Pole Mount

- Mounting Accessories Needed:**
- UNI-WMB1-Gooseneck Wall Mount
 - UNI-PMA1-Aluminum Existing Pole Mount Adaptor
 - Outdoor Pendant Housing



UNI-RMB1 Roof Mount (Parapet)

- Mounting Accessories Needed:**
- UNI-RMB1-Aluminum Parapet Mount
 - Outdoor Pendant Housing



UNI-CMA1 Corner Mount

- Mounting Accessories Needed:**
- UNI-CMA1-Aluminum Corner Mount Adaptor
 - UNI-WMB1-Gooseneck Wall Mount
 - Outdoor Pendant Housing



UNI-PBU1 Power Block Unit (Wall Mount)

- Mounting Accessories Needed:**
- UNI-WMB1-Gooseneck Wall Mount



UNI-PBU1 Power Block Unit (Pole Mount)

- Mounting Accessories Needed:**
- UNI-PMA1-Aluminum Existing Pole Mount Adaptor
 - UNI-WMB1-Gooseneck Wall Mount



UNI-ORD7C2/T

7" Aluminium Dome Enclosure with clear cover

Outdoor Vandal Resistant



Features and Benefits

- Outdoor PTZ camera housing (Vandal resistant)
- 7" Aluminium Dome housing
- Built in fan and heater

UNI-ORD7T2/T

7" Aluminium Dome Enclosure with tinted cover

Outdoor Vandal Resistant



Features and Benefits

- Outdoor PTZ camera housing (Vandal resistant)
- 7" Aluminium Dome housing
- Built in fan and heater

Model	Description	Rating	Operating temperature	Operating voltage	Applicable Models	Colour
UNI-ORD7C2/T	Outdoor Dome Camera Housing	IP66 IK10	-20 to +50°C	24VAC	SNC-WR630/600 SNC-EP/ER Series	Pantone 2U

UNI-ORD7C3/T

7" Aluminium Dome Enclosure with tinted cover

Outdoor Vandal Resistant



Features and Benefits

- Outdoor PTZ camera housing (Vandal resistant)
- 7" Aluminium Dome housing
- Built in fan and heater

UNI-ORD7T3/T

7" Aluminium Dome Enclosure with tinted cover

Outdoor Vandal Resistant



Features and Benefits

- Outdoor PTZ camera housing (Vandal resistant)
- 7" Aluminium Dome housing
- Built in fan and heater

Model	Description	Rating	Operating temperature	Operating voltage	Applicable Models	Colour
UNI-ORD7C3/T	Outdoor Dome Camera Housing	IP68 IK10	-20 to +50°C	24VAC	SNC-ER580 SNC-WR 630 / 600	Pantone 2U

UNI-ORF8C1/T

Outdoor Box Camera Housing

Outdoor Vandal Resistant



Features and Benefits

- Vandal resistant aluminium housing
- Built in fan and heater
- High strength steel wall mount bracket included

Model	Description	Rating	Operating temperature	Operating voltage	Applicable Models	Colour
UNI-ORF8C1/T	Fixed housing, c/w sunshield, heater, wall bracket	IP66 IK10	-20 to +50°C	DC12V	SNC-VB600 SNC-VB630 SNC-EB600B SNC-EB630B SNC-EB600 SNC-EB630 SSC Analog Box Cameras	Pantone 2U

UNI-ORF8C2/T

Outdoor Box Camera Housing

Outdoor Vandal Resistant



Features and Benefits

- Vandal resistant housing
- Built-in fan and heater

Model	Description	Rating	Operating temperature	Operating voltage	Applicable Models	Colour
UNI-ORF8C2/T	Box Outdoor with Sun shield/Fan/ Heater Wall Mount Bracket	IP66 , IK10	-20 to +50°C	AC 24V	SNC-VB600, SNC-VB630, SNC-EB600, SNC-EB630, SNC-EB600B, SNC-EB630B SSC Analog Box Cameras	Pantone 2U

UNI-WMB2/T

Wall Mount Bracket



Features and Benefits

- Aluminium Wall Mount Bracket

Model	Description	Applicable/compatible housing/models	Colour
UNI-WMB2/T	Wall Mount Bracket	UNI-ORD7T2/T UNI-ORD7C2/T UNI-OND9C2/T UNI-CMA2/T UNI-PMA2D/T	Pantone 2U

UNI-PBU2G/T

Power block unit with Gooseneck for UNI-OND9C2/T, UNI-ORD7C2/T, UNI-ORD7T2/T



Features and Benefits

- Gooseneck for TA Series dome housing included
- 220/115V input, AC24V (3A) output for camera

Model	Description	Applicable/compatible housing/models	Output Voltage	Input Voltage	Colour
UNI-PBU2G/T	Power Block Unit with Gooseneck	UNI-ORD7C2/T UNI-ORD7T2/T UNI-OND9C2/T UNI-CMA2/T UNI-PMA2D/T	AC24V (3A)	115VAC / 220VAC input	Pantone 2U

UNI-WMB2P/T

Wall Mount Bracket



Features and Benefits

- Aluminium wall Mount Bracket

Model	Description	Applicable/compatible housing/models	Colour
UNI-WMB2P/T	Wall Mount Bracket	SNC-ER585H, SNC-WR632C, SNC-WR602C, SSC-SD26/36P	White

UNI-PMB30/T

Pendant Mount Bracket(30cm)



Features and Benefits

- Aluminium material pendant mount bracket (30cm)

Model	Description	Applicable/compatible housing/models	Colour
UNI-PMB30/T	30cm Pendant Bracket	UNI-OND7T2/T UNI-ORD7C2/T UNI-OND9C2/T	Pantone 2U

UNI-PMA2D/T

Pole Mount Adapter for UNI-WMB2/T and UNI-PBU2G/T



Features and Benefits

- Steel material Pole Mount Adapter

Model	Description	Applicable/compatible housing/models	Colour
UNI-PMA2D/T	Pole Mount Adapter, included with steel rings	UNI-WMB2/T UNI-PBU2G/T UNI-WMB2P/T UNI-WMB2R/T	Pantone 2U

UNI-CMA2/T

Wall mount corner adaptor



Features and Benefits

- Steel material exterior angle 90 Degree Corner adaptor.

Model	Description	Applicable/compatible housing/models	Colour
UNI-CMA2/T	Wall Mount Corner adaptor	UNI-WMB2/T UNI-PBU2G/T UNI-WMB2P/T UNI-WMB2R/T	Pantone 2U

UNI-UMB1

Indoor Wall Mount Bracket for minidome & Indoor PTZ cameras



Features and Benefits

- Mini dome and Indoor PTZ camera bracket kit that bolts the cameras directly to the wall and Indoor PTZ camera

Model	Description	Applicable/compatible housing/models	Colour
UNI-UMB1	Wall Mounted Bracket	SNC-VM600/VM600B/VM 630 SNC-VM601/VM601B/VM631 SNC-EM600, SNC-EM601, SNC-EM630, SNC-EM631 SNC-EP/ER Series	Pantone 2U

UNI-MDPBKBOX1 /T



Features and Benefits

Model	Description	Applicable/compatible housing/models	Colour
UNI-MDPBKBOX1/T	Power box with SONY unique plate cover for UNI-MDPEM600 and UNI-MDPPOLE1/T	UNI-MDPEM600 with UNI-MDPPOLE1/T	White

UNI-MDPBKPLT1 /T

Ceiling Mount Bracket



Features and Benefits

Model	Description	Applicable/compatible housing/models	Colour
UNI-MDPBKPLT1/T	Ceiling mount bracket for UNI-MDPPOLE1/T	UNI-MDPEM600 with UNI-MDPPOLE1/T	White

UNI-MDPPOLE1 /T

Aluminium material pipe for UNI-MDPBKOX1 /T and UNI-MDPEM600



Features and Benefits

- Aluminium material pipe for UNI-MDPBKOX1 /T and UNI-MDPEM600

Model	Description	Applicable/compatible housing/models	Colour
UNI-MDPPOLE1/T	30 cm 1" male-male aluminum pipe with two O rings on two end of pipe.	UNI-MDPEM600 with UNI-MDPBKBOX1/T	White

UNI-WMB2R/T

Wall mount bracket



Features and Benefits

Model	Description	Applicable/compatible housing/models	Colour
UNI-WMB2R/T	Wall mount bracket	UNI-MDPEM600	White

UNI-MDPEM600

Aluminium Pendant Mount



Features and Benefits

- Aluminium Pendant Mount

Model	Description	Applicable/compatible housing/models	Colour
UNI-MDPEM600	pendant mount adaptor for the SNC-EM600/601/630/631, VM600/601/630/631 with 4@4x8 double washer screws	SNC-EM600,601,630,631, VM600,601,630,631	White

UNI-XBS1/T

X Series silver color mini bracket



Features and Benefits

- Silver and black color mini bracket for SNC-CH210/S, SNC-CH110/S, SNC-CH210/B, SNC-CH110/B

Model	Description	Applicable/compatible housing/models	Colour
UNI-XBS1/T	silver color mini bracket	SNC-CH110/S	Silver
UNI-XBB1/T	black color mini bracket	SNC-CH110/B	Black

UNI-XBB1/T

X Series black color mini bracket



FPI-100

Single Port PoE injector(Midspan)



Features and Benefits

- PoE backward Compatible
- Safe: Low Power Devices Receive Only the Power They Need
- Safe and Reliable Power to WLAN Access Points
- Automatic Detection and Protection of Non-standard Ethernet Terminals
- Supports 10/100/1000Base-T applications

Technical Specifications	
Standards	IEEE 802.3 10BaseT IEEE 802.3u 100BaseTX
Features	Number of Ports: 1 Ethernet Input (data only) Port 1 Ethernet Output (data + power) Port
Led Indicators	PoE: PoE load
Power Input	100-240 VAC, 50-60Hz
Pin Assignment and Polarity	4/5(+), 7/8(-)
Power Output	52V/DC at Full 15.4 W Output Supported
Dimensions	87.9 mm x 51.3 mm x 166 mm
Weight	350 g
Operating Temperature	0 to 40°C
Storage Temperature	-20 to 85°C
Humidity	10 to 90% RH (non-condensing)

* Except SNC-WR630/632/600/602

FPI-9501

Single Port 60W hPoE injector only for SNC-WR630/SNC-WR632/SNC-WR600/SNC-WR602



Features and Benefits

- Single Port 60W hPoE injector only for SNC-WR630/SNC-WR632/SNC-WR600/SNC-WR602

Technical Specifications	
Standards	IEEE 802.11n IEEE 802.3at
Features	Number of Ports: 1 Ethernet Input (data only) Port 1 Ethernet Output (data + power) port
Power Input	110V AC - 240V AC
Power Output	54V AC - 57V AC
Weight	400g
Dimension	89.9mm x 43mm x 166mm
Operating Temperature	-10 °C to 45 °C
Storage Temperature	-20 °C to 70 °C
Humidity	Max 90%

TA Series Camera & Housing, Compatibility Table

<p style="writing-mode: vertical-rl; transform: rotate(180deg);">SONY MODEL</p>	 <p>SNC-EP/ER indoor series / W indoor Series</p>			 <p>WR Series outdoor / ER585H</p>	 <p>VB600/VB630/EB600/EB630/EB600B/EB630B</p>	 <p>SSC-G/FB series camera *Housing to be used with cameras with lens of certain size</p>
<p style="writing-mode: vertical-rl; transform: rotate(180deg);">HOUSING MODEL</p>	 <p>UNI-ORD7C2/T, UNI-ORD7C3/T 7" PTZ vandal resistant Clear bubble outdoor housing</p>	 <p>UNI-ORD7T2/T, UNI-ORD7T3/T 7" PTZ vandal resistant Tinted bubble outdoor housing</p>	 <p>UNI-ORF8C1/T / UNI-ORF8C2/T BOX camera vandal resistant outdoor housing</p>			
<p style="writing-mode: vertical-rl; transform: rotate(180deg);">BRACKET</p>	 <p>UNI-WMB2/T Wall mount bracket for PTZ housing</p>	 <p>UNI-PBU2G/T Power block unit with gooseneck</p>	 <p>UNI-PMB30/T 30cm Pendant Mount Bracket for PTZ</p>	 <p>UNI-WMB2PT Wall Mount Bracket</p>		
<p style="writing-mode: vertical-rl; transform: rotate(180deg);">OPTIONAL</p>	 <p>UNI-CMA2/T Corner Mount Adapter</p>	 <p>UNI-PMA2D/T Pole Mount Adapter</p>				

TA Series Housing

TA Series Accessories

Audio Accessories

SCA-M30

The SCA-M30 is an in-ceiling/desktop microphone, designed to work with Security Network Cameras and encoders for indoor use.

Indoor

Features and Benefits

- Compatible with Sony Network Camera/Encoder
- Clearly picks up sound
- Strong structure against external vibration
- Easy installation
- Input sensitivity can be selected



General	Applicable/compatible
Capsule type	Electret condenser
Directivity	Uni-directional
Frequency response	300 Hz to 10kHz
Sensitivity (at 1 kHz)	-40dB*1 ±3.5dB
Signal-to-noise ratio	60dB and more (IEC179 A weighted, 1kHz, 1Pa)
Power supply	Plug in Power DC 1.5 V - 9 V
Current consumption	0.5mA and less
Output connector	φ3.5mm mini-plug (3poles) Tip-Ring short connected
Connector cable length	Approx.300 cm
Dimensions	φ126 X 55 mm
Mass	Approx. 146g (Not included cable) Approx. 225g with Bracket (Not included cable)
Supplied accessories	Bracket(1), +BV 4 x 20(2), +K 2.6 x 20(3), Operating instruction(1), Warranty booklet(1)

Applicable/compatible models

SNC-DH240T, SNC-EP/ER Series,
SNC-CH180, SNC-CH280, SNC-DH180, SNC-DH280
SNT-EX101, SNC-EX101E, SNC-EX104, SNC-EX154
SNC-VB/VM Series

Tinted Bubble



General	Applicable/compatible
YHLD600s	SNC-VM630/SNC-VW600/SNC-VM600B SNC-EM630/SNC-EM600
UNI-LD601s	SNC-VM631/SNC-VW601/SNC-VM601B SNC-EM631/SNC-EM601
UNI-LD280	SNC-VM632RC/SNC-VM602RC/SNC-EM632RC/SNC-EM602RC
UNI-LDR632s	SNC-WR632C/SNC-WR602C
UNI-LDR632R	SNC-ER585/SNC-ER585H

SCA-S30

The SCA-S30 is a highly durable speaker for outdoor environments. It is designed to work with Network cameras and encoders. It can generate loud sound by its high efficiency digital amplifier.

Outdoor

Features and Benefits

- Built-in high efficiency digital amplifier
- Seamless integration with Sony Network Camera/Encoder
- Reliable and durable in outdoor environments (IP66)
- Easy Installation (wall/pole fixing)




General	Applicable/compatible
Frequency response	100 Hz to 15,000Hz (at 5W output power)
Reference input level (at 1 kHz)	-10dBu (0dBu = 0.775Vrms)
Output	30W and more (AC24V, 1kHz -10dBu input)
Maximum Output	35W and more (AC24V, 1kHz input)
Input impedance	20kohm +/-20% (at 1kHz)
Distortion	Less than 1% (AC24V, 30W output at 1kHz)
Signal to Noise ratio	80dB and more (IEC179A weighted, 30W,1kHz)
Power supply	AC24 V +/- 10% 50Hz/60Hz
Power consumption	8W (AC24V, 1/8 output power)
Dimensions	φ150 x 245mm (included mount frame)
Mass	Approx. 2.4kg (included mount frame)
Operating temperature	0°C to 50°C
Storage temperature	-20°C to +60°C
Supplied accessories	Wire rope (1), +M4 x 16(1), Operating instruction(1), Warranty booklet(1)

Applicable/compatible models



SNC-CH140, SNC-CH240, SNC-DH140, SNC-DH140T, SNC-DH240, SNC-DH240T
SNC-EP/ER Series,
SNC-ZP/ZR Series,
SNC-CH180, SNC-CH280, SNC-DH180, SNC-DH280
SNC-RH Series
SNT-EX101, SNC-EX101E, SNC-EX104, SNC-EX154
SNC-VB/VM series

Wireless Accessories (SO Series)

Picture	Model	Description	Applicable/compatible housing models	Key Features	Operating Temperature	IP Rating
	SNC-WP602	Weather Protector	SNC-VM632R, SNC-VM602R, SNC-EM602R, SNC-EM632R	N/A	N/A	N/A

(1*): SNC-CH180 and SNC-CH280 cannot be used with SNCA-AN1.

In-Ceiling Mount Accessories (SO Series)

Picture	Model	Description	Applicable Camera models	Optional accessories	Dimensions	Colour
	YT - ICB124	In Ceiling Bracket 	SNC-EP/ER series	 YT - LD124C Clear Dome Cover  YT - LD124S Tinted Dome Cover	L226 x H152 x W270 mm	White (Clear or Tinted by Cover)
	YT - ICB140	In Ceiling bracket	SNC-DH140T, SNC-DH120T, SSC-N20, SSC-N21, SSC-N24, SNC-FM531, SNC-FM561, SNC-CM565R	N/A	L175.5 x H99 x W198 mm	White
	YT - ICB45	In Ceiling bracket	SNC-VM632R/SNC-VM602R, SNC-EM632R/SNC-EM602R	N/A	L227 x H100 x W270 mm	White
	YT - ICB600	In Ceiling bracket 	SNC-DH120/DH120T, SNC-DH140/DH140T, SNC-DH160, SNC-DH180, SNC-VM600/VM600B/VM630, SNC-VM601/VM601B/VM631, SNC-EM600/SNC-EM630, SNC-EM601, SSC-FM530/FM531, SSC-FM560/FM561, SSC-N21, SSC-N24, SSC-CM564R/CM565R	N/A	L185.5 x H99 x W208 mm	White
	YT - ICB630	In Ceiling bracket	SNC-WR630C/WR600C	N/A	L225.7 x H154.8 x W270 mm	White

Housing and accessory table

Model Name			VA Series Housing													TA Series Housing												
			Outdoor Housing						Indoor Housing				Other Accessories			Outdoor Housing			Other Accessories									
			Dome Housing													Corner Mount Adapter	Pole Mount Adapter	Wall / Pole mount back box	Power Block Unit	Dome Housing			Corner Mount Adapter	Pole Mount Adapter				
			UNI-ONL7C2	UNI-ONL7C2W	UNI-ONL7T2	UNI-ONL7T2W	UNI-OP17C2	UNI-OP17T2	UNI-OR17C2	UNI-OR17C2W	UNI-OR17T2	UNI-OR17T2W	UNI-HN17C2	UNI-HN17T2	UNI-HR17C2	UNI-HR17T2	UNI-CMA1	UNI-PMA1	UNI-WMBB1	UNI-PBU1	UNI-OND9C2/T	UNI-ORD7C2/T	UNI-ORD7T2/T	UNI-ORD7C3/T	UNI-ORD7T3/T	UNI-CMA2/T	UNI-PMA2D/T	
VA Series Accessories	Gooseneck Wall mount bracket	UNI-WMB1	•	•	•	•	•	•	•	•	•	•	•	•	•	•	•	•	•									
		UNI-WMB3	•	•	•	•	•	•	•	•	•	•	•	•	•	•	•	•	•	•								
	Parapet Mount	UNI-RMB1	•	•	•	•	•	•	•	•	•	•	•	•	•													
	Pendant Mount Bracket Minidome Bracket	UNI-MDB3														•	•	•	•									
TA Series Accessories	Gooseneck Wall mount bracket	UNI-WMB2/T																			•	•	•	•	•	•	•	•
	Pendant Mount Bracket	UNI-PMB30/T																			•	•	•	•	•			
	Power Block Unit with gooseneck	UNI-PBU2G/T																			•	•	•	•	•	•	•	•

(3*): SNC-CH180 and SNC-CH280 cannot be used with SNCA-AN1.

Distributed by

©2015 Sony Electronics Asia Pacific Pte. Ltd. All rights reserved.
Reproduction in whole or in part without written permission is prohibited.
Features and specifications are subject to change without notice.
All non-metric weights and measurements are approximate.
All images are simulated pictures unless otherwise indicated and may vary from actual.
Sony, IPELA, DEPA, ExwavePRO, ExwaveHAD, Dynaview, Dynaview EX and
Super HAD are registered trademarks of Sony Corporation.
All other trademarks are the property of their respective owners.
"Sony", "Exmor", "Dynaview", "DynaView EX" and "DEPA" are trademarks of Sony Corporation.

pro.sony-asia.com/security