

DESTINATION

Iron County, Wisconsin



Slow down, unplug and unwind on the road less traveled.



Welcome!

It is with great pleasure that we welcome you to Iron County, WI.



Inside this guide you will find exciting opportunities to explore our county's breathtaking scenery and the beauty of our four seasons while enjoying a wide variety of recreation possibilities.

FUN FACTS about IRON COUNTY, WI

- No stop light in the entire county.
- Iron County has the highest snowfall total of any county in the state.
- Iron County has Wisconsin's largest ATV system.
- Pence has the largest concentration of log buildings for a community of its size, in Wisconsin.
- The Town of Montreal is on the National Register of Historic Places.
- Iron County is the only county that has had snowfall in every month of the year.
- The world's largest talking loon statue is located in Mercer.
- The world's deepest iron ore mine is the Montreal Mine, with a depth of over 1 mile.
- The Turtle Flambeau Flowage is known as the Crown Jewel of Wisconsin and is the state's largest wilderness water area.
- U.S. Highway 51 ends in Iron County and begins in New Orleans, LA.
- Wisconsin's largest downhill ski area is Whitecap.
- Wisconsin's record black crappie was caught in the Gile Flowage in August 1967 weighing 4lbs. 8 oz.
- The Plummer Mine Headframe is the only standing mine frame in Wisconsin.
- Two of Wisconsin's largest waterfalls are located in Iron County.

Table of Contents:

Introduction	1
Four Seasons	2
Come and Explore	3
Biking	4
Paddling	5
Hiking	6
Hunting	7
Fishing	8
Skiing & Snowshoeing	9-10
ATV & UTVing	11
Snowmobiling	12
Waterfalls	13-14
Camping & Recreation	15-18
Golfing	18
Attractions	19-22
Color Tour Routes	23-24
Living in Iron County	25-28
Lodging	29-31
Dining	32-33
Annual Events	34

VISITING IRON COUNTY, WI during COVID-19

The COVID-19 pandemic has impacted everyone's ability to connect with our favorite people and places. We're all interacting differently and exploring the world in new ways. As you consider travel during these uncertain times, we ask that you follow local guidelines and regulations put in place by the destinations you visit and their businesses. While you're here, be sure to follow proper safety precautions and social distancing. Also, be aware that many events may be post-poned, cancelled or adjusted. Please check with Chambers for updated information.

Experience Four Seasons of Wonderful Adventures!

IRON COUNTY, where life slows down and you come to unplug & unwind. Take in the peacefulness of our beautiful Northwoods, relax to the sounds of babbling brooks, chirping birds, and rustling leaves dancing in the breeze. Don't miss the brilliant display of our fall leaves or the serene beauty of our winter landscape. Whether you decide to visit and play, or stay ... Iron County has something for everyone!



Come & Explore

Discover Iron County Outdoors

- 484,480 acres of land, 377,900 of which is forest!
- 214 inland lakes
- 336 miles of trout streams
- 14,300 acre Turtle Flambeau Flowage - “Wisconsin’s Crown Jewel”
- 3,400 acre Gile Flowage
- Our big lake...Lake Superior



Year-round Adventure Awaits!

- Biking & Hiking
- Golfing
- Camping
- Paddling & Boating
- Hunting & Fishing
- Snowshoeing, Skiing & Snowboarding
- ATVing & Snowmobiling

Request an Iron County
“Sportsman’s & Outdoor Recreation Map”
for locations.

Biking

Paved Trails & the Future

Iron County and its communities continue to design and build paved bike/hike trails for your enjoyment. The Northern Highlands Regional Multi-use Trail System starts in Mercer, running through Manitowish Waters and connecting to the paved trail system in Boulder Junction. The majority of the time you will find yourself meandering through quiet stands of hardwoods and pines, past lakes and over rivers; other times you will be sharing quiet back roads with automobiles.

The Cary Road Park Trail in Hurley jumps onto the Iron Belle Trail in Ironwood, MI and runs to Ramsay, MI. Future extended development continues.

Off the Beaten Path

Quiet gravel roads and two track back country trails wind through forested areas and past lakes, streams and waterfalls that cascade over iron rich rock. Our trails incorporate many of the county's historic transportation, mining and lumbering sites - explore them all. Bring your sense of adventure!

It's a spectacular way to experience nature and see wild areas unlike any other in the state.



Paddling

Lake Superior and 214 Inland Lakes

Lake Superior is the world's largest freshwater lake by surface area and Saxon Harbor in northern Iron County is your entry point to this recreational giant. Paddling along the shores will give you a variety of coastal views, from the gently sandy beaches to steep, red clay cliffs. Of the 214 inland lakes, most have public boat landings, some offer access only through resort landings and others are strictly carry-in access.



Gile Flowage

Gile Flowage, a 3,380 acre lake in northern Iron County, is the last large underdeveloped "Laurentian Shield" lake in Wisconsin. The pristine flowage is popular for canoeing, kayaking, boating and fishing.



Turtle-Flambeau Scenic Waters Area

The Turtle-Flambeau Scenic Waters Area encompasses over 38,000 acres with its star attraction being the 14,300 acre Turtle-Flambeau Flowage. There are six boat access sites in the Turtle-Flambeau Scenic Waters Area providing public access to the Flowage. Paddlers seeking a respite from the stress and noise of the modern world are invited to explore the "Quiet Area" of the famed Turtle-Flambeau Scenic Waters Area.



River Paddling Routes

Turtle River Route

Total: 27 miles

Rating: Intermediate

Bear River Route

Total: 25 miles

Rating: Novice

Manitowish River Route

Total: 20 miles

Rating: Novice

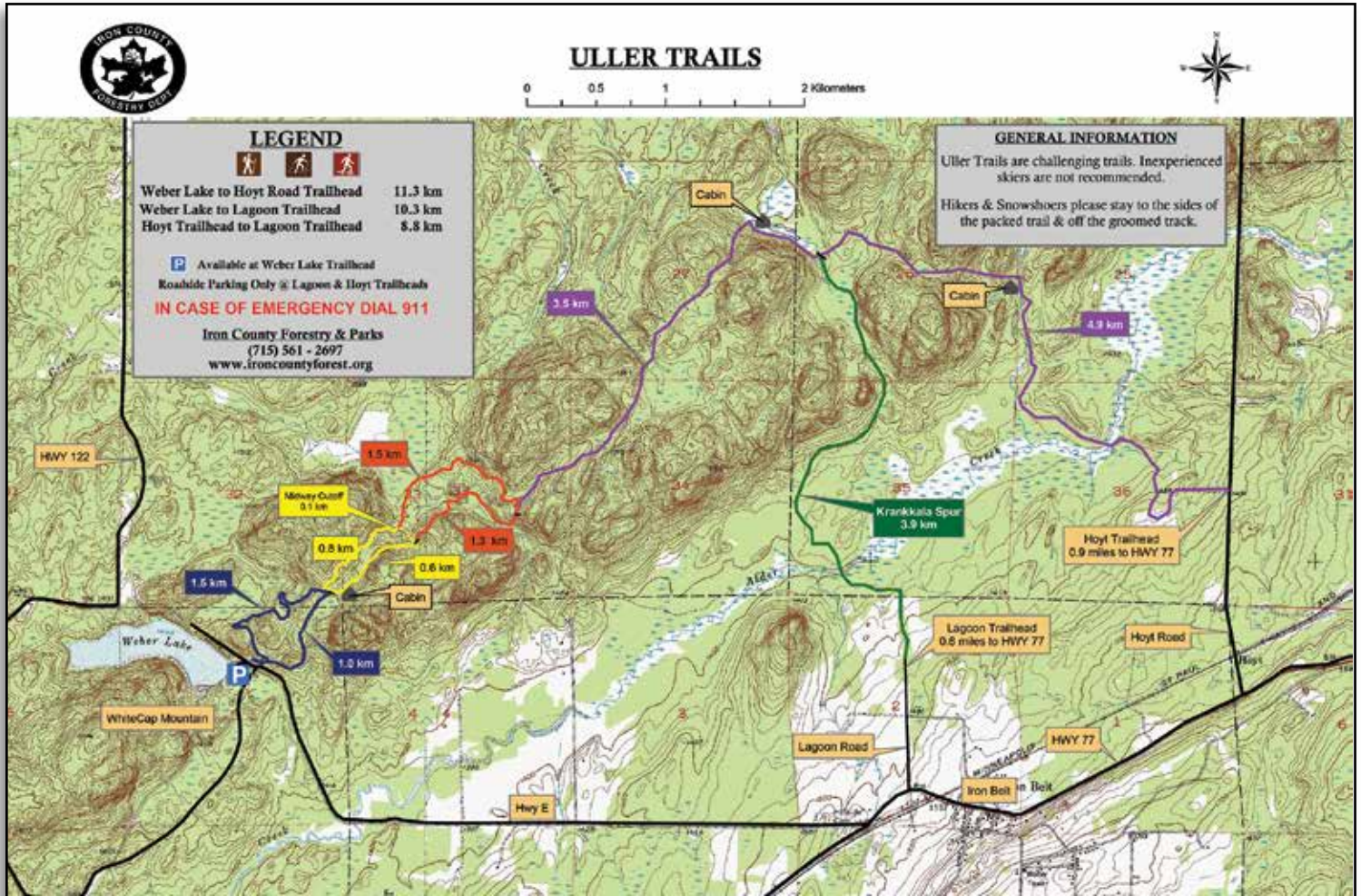
For locations request an Iron County
"Sportsman's & Outdoor Recreation Map"
from any of the offices on the back of this brochure.

Hiking

Our land trails are multipurpose; beckoning hikers and bikers, cross country skiers, snowshoers, birders, hunters and cache seekers, campers and budding naturalists eager to learn about the flora and fauna of the fabulous Northwoods.

In many places you will be in company of fellow enthusiasts, but you won't feel crowded. Most trails are well marked and signed, but plenty of opportunities for exploration await the adventurer equipped with compass, GPS and map.

In select areas, the going gets more remote, such as on the Uller Trail in far northern Iron County. Cross country skiers, snowshoers and hikers should bring along supplies, water and food, and be prepared for emergencies.



For additional walking trails be sure to check out the **MECCA Ski Trails**: www.meccatrails.com and the **Historic Montrea Ski Trails**: www.penokeerangers.com

The North Country National Scenic Trail is a premier footpath that stretches 4,600 miles to link communities and wilderness areas across seven northern states. The first official trail segments in Wisconsin pass through Iron County forest, and the ancient and worn down Penokee Mountain range, running from Copper Falls State Park near Mellen to the Wisconsin-Michigan border. This area of the North Country Trail remains one of the most remote sections of the trail in Wisconsin. You can find a map and more information about it by going to: <https://northcountrytrail.org>. Scroll down to **Find Your Chapter** and type in "Heritage Chapter".

Turtle-Flambeau Area Trails:

- Deadhorse Trail
- Big Island Trail
- Wilson Hills Trail
- Little Turtle Trail
- Hidden River Nature Trail

*Maps for most of these locations can be viewed on Page 7 or for more info. visit: <https://mercerc.com/things-to-do/hike/>



Hunting

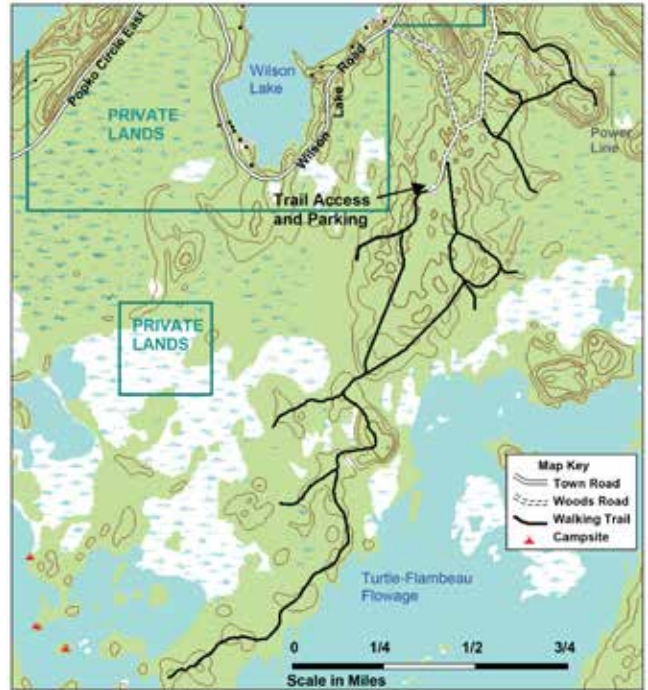
Iron County has more than 175,000 acres open to hunting, fishing and trapping. Game species are found all across Iron County which include whitetail deer, black bear, coyote, red fox, bobcat, duck, turkey and ruffed grouse.

Hunter walking trails are found throughout Iron County. The Mecca and Uller cross country ski trails make great hunter walking trails in the fall, and can be utilized for bird watching in the spring and summer months. The Dead Horse Ruffed Grouse Demonstration Area, north of Trude Lake off Popko Circle, also has hunter walking trails, as does the Potato River Grouse Management Area, between the Potato River, Highway 122, and Sullivan Fire Lane. Logging roads may be gated or bermed to prevent vehicle access to protect new wildlife seedlings, however they do provide excellent walking trails for hunters.

DEADHORSE RUFFED GROUSE MANAGEMENT AREA Access off Popko Circle Road



WILSON LAKE Access off Deer Lake Road or Wilson Lake Road



BIG ISLAND Access off Popko Circle Road



LITTLE TURTLE HUNTER WALKING TRAIL



For a map of the Potato River Grouse Management Area go to: <https://www.ironcountyforest.org/hunting--hunting-trails-1.html>

For more information on all the Turtle-Flambeau area walking trails visit: <https://mercerc.com/things-to-do/hike/>

Fishing

From the backwoods waters of the 14,300 acre Turtle-Flambeau Flowage, or one of the other 214 lakes, you are sure to find a top notch fishing adventure. We invite all anglers, fishing buddies and families, to explore these exceptional bodies of water and make fond memories for a lifetime. Each is unique and offers excellent opportunities to bring back the makings of a fish fry to the cabin or a trophy fish to be mounted. Largemouth and Smallmouth Bass, Perch, Crappie, Bluegill, Walleye, Musky and Northern Pike are popular fish species to be caught in these lakes, not to mention fly fishing for Trout in one of our rivers or streams. Plenty of fresh bait and a variety of tackle, along with helpful advice from the folks who fish for a living can be found here. Hook up with a guide or explore on your own. When “hard water” arrives, break out the ice fishing tackle and have a ball.



If you'd like to try your hand at fishing for Lake Trout and Chinook, take to the waters on our big lake...Lake Superior. You can launch from Saxon Harbor Marina which boasts a new 81 slip marina, 3 boat ramps, boat lift and splash service, a kayak launch, gasoline and diesel fuel. More information can be found at ironcountyforest.org.



Skiing & Snowshoeing

Mecca Ski Trails (cross country ski)

www.meccatrails.com

612-309-4359

4686 Fierick Rd., Mercer, WI 54547

21k of classic and skate ski groomed trails plus 3 miles of snowshoe trails in the winter. Ski trails are open for hiking and birding in the spring, summer and fall.



Uller Trail

<https://ironcountywi.com/recreation/cross-country-skiing/>

For the ultimate in scenic beauty and challenging cross country skiing, the Uller Ski Trail surpasses all others; winding through the Penokee Range for 30 km (18 miles) between Whitecap Mountain and Montreal. The Penokee Rangers volunteers groom and maintain the trails for cross country skiing. Snowshoers are allowed and encouraged to stay to the side of the ski tracks. If you don't want to do the entire trail, try the spur trails for a taste of the scenery, without the distance. A 5 km spur ties into the town of Iron Belt. Uller Trail welcomes skiers from beginner to expert. Due to the Uller's isolated location, it is important to follow the proper winter safety procedures and ski with a buddy if possible.



Historic Montreal Ski Trails

www.penokeerangers.com

Trailheads are located at Rose Wreath on Hwy 77 and Spring Camp Road on the west side of Montreal.

The Montreal Ski Trails have 8.6 km of trails through Montreal's historic mining district with interpretive signage describing the history of iron ore mining. The Penokee Rangers volunteers groom and maintain the trails for cross country skiing. Snowshoers are allowed and encouraged to stay to the side of the ski tracks.



Winman Trails (cross country ski & snowshoe)

www.winmantrails.com

646-543-8784

6870 County Hwy. W, Winchester, WI 54557

Network of silent sport trails that offer mountain biking, hiking, classic and skate skiing, snowshoeing and winter fat biking.

Wolverine Trails

www.wolverinenordic.com

906-932-0347

Sunset Rd., Ironwood, MI 49938

Trails for cross country skiing, snowshoeing, mountain biking, & hiking.

ABR Ski Trails

<http://www.abrski.com/>

906-932-3502

9699 W Pioneer Rd., Ironwood, MI 49938

A full service ski touring center located on over 1100 scenic acres of varied terrain along the Montreal River.



**Iron County is the “Snow Capital of Wisconsin”...
averaging over 200 inches of snow annually and creating many
opportunities for the winter sports enthusiast to get out and enjoy nature.**

Alpine Skiing

Iron County lies in the heart of Big Snow Country with mountains of the most dependable, fluffy, white snow you can find in the Midwest. Four major downhill ski areas lie in Big Snow Country. Wisconsin’s largest downhill ski area, Whitecap Mountains, is located right here in Iron County. Whitecap Mountains has 43 downhill ski trails on the ancient Penoquee mountain range, with views of Lake Superior and the Apostle Islands. Other Big Snow Country ski areas are located in Michigan within 10 miles of the Iron County border.

Whitecap Mtns. Resort

whitecapresort.com

Big Powderhorn Mtn. Resort

<https://bigpowderhorn.net/>

Indianhead Mtn. & Blackjack Mtn. Resort

<https://www.bigsnow.com/>



Snowshoeing

There is no better way to begin snowshoeing than just going out and doing it. Snowshoeing is the fastest growing winter sport because it is easy to learn, virtually inexpensive, poses little risk of injury and is a great way to exert energy during the winter months.

Schomberg Park Snowshoe Trail

The Schomberg Park Snowshoe Trail offers a picturesque snowshoe outing for all ages and skill levels. The marked snowshoe trail loops through 160 acres of Schomberg Park, located about midway between Hurley and Mercer.

9701N Hwy 51, Hurley, WI 54534



Iron County owned forest land

County owned land is always open to the public for the adventurous at heart that want to blaze their own trails.

Winter Waterfalls

Go rogue and snowshoe to our local waterfalls. It can be very invigorating and provides a new look at their splendor. However please keep your safety in mind when you traverse this terrain in winter as the snow can be unstable along the water’s edge.



River’s Edge Lodge & Outfitters

<https://www.riversedgemw.com/>

715-543-8070

263 US-51, Manitowish Waters, WI 54545

Outfitters for getting outside in the Northwoods, including canoes, kayaks, bikes, tubes, rafts, snowshoes, skis, and camping gear.

Hobby Wheel

<https://www.hobbywheel.com/>

906-932-3332

1435 E Cloverland Dr., Ironwood, MI 49938

Ski & bike shop offering rentals for skis, snowshoes & snowboards.

ATVing & UTVing **Iron County boasts the largest ATV/UTV trail system in Wisconsin.**

Approximately 200 miles of routes & trails take you deep into the heart of Iron County and are famous for offering some of the best riding in Wisconsin and the Midwest. The trails incorporate many of the county's historic transportation, mining and lumbering sites, as well as plenty of lakes and waterfalls in the forest. Along the routes and trails you will find a variety of friendly pitstops offering food, beverages, gas and lodging.



Be sure to attend our annual Memorial Weekend ATV/UTV Rally in May and the annual Pumpkin Run in October.



During the winter, ATVs and UTVs are welcome on most Iron County snowmobile trails, however riders must follow the ATV map routes, not the snowmobile map. Also, riders are requested to stay off of the trails when it is above 32 degrees.



Request an
["ATV/UTV Trail Map"](#)

From one of the Chamber offices below:

www.hurleywi.com

www.mercercc.com



Snowmobiling

There are hundreds of miles of snowmobile routes and trails in Iron County.



With an average snowfall of +200 inches you just have to experience snowmobiling in Iron County!

Our snowmobile trails offer a variety of riding experiences. From former railroad grade, to heavily forested land, to the wide open spaces of marked trails across the Turtle Flambeau Flowage, riders understand why Iron County is the Snow Capital of Wisconsin.

AWSC awarded us as a snowmobile friendly county.



Request a

[“Snowmobile Trail Map”](#)

From one of the Chamber offices below:

www.hurleywi.com

www.mercercc.com

Waterfalls

Under the Magic Spell of Waterfalls

Whether they thunder, gurgle or whisper, each of the **11** waterfalls in Iron County is a perfect choice for a visit no matter what the calendar says, as each season imparts its own special brand of beauty on the tumbling waters. The waterfalls are particularly spectacular in spring, but also wonderful in winter. While some of these waterfalls have easy access and viewing decks, others are located in more remote, wild regions so it is wise to notify someone of your location before you decide to hike to them. You may find a GPS helpful. Also note that there is little to no cell phone service in these areas.

Good hiking footwear, a camera and caution while near the larger falls is recommended. Please do not attempt to cross or swim at these locations. We hope you have an enjoyable time while you are out in the northwoods discovering them.

In addition to viewing these gorgeous falls, many offer great fishing, camping or picnicking opportunities...not to mention wildlife & bird watching!

Saxon Falls

46.535797° 90.380255°

90 feet. Directions from Hurley: travel about 12.5 miles west on U.S. 2. Turn right on Hwy. 122 north, traveling for approx. 2.1 miles. At County B turn right and follow 1.5 miles, then take a left at Saxon Falls Road (unpaved). Go 0.5 miles to the unpaved parking area. On foot, follow the short, wooded hiking trail to the east of the parking area, which leads to the overlook location.

[Travel difficulty: Easy](#) [Trail difficulty: Easy](#)

Superior Falls

46.561044° 90.415184°

90 feet. The falls drops into the Montreal River near its mouth on Lake Superior. From Hurley: travel about 12.5 miles west on U.S. 2. Turn right on Hwy. 122 north, traveling for approx. 4.2 miles (crossing the Michigan border). Continue another 0.5 miles to a gravel road on the left. A parking area is available. There are signs marking upper and lower viewing areas.

[Travel difficulty: Easy](#) [Trail difficulty: \(upper\)Easy \(lower\)Difficult](#)



Potato River Falls

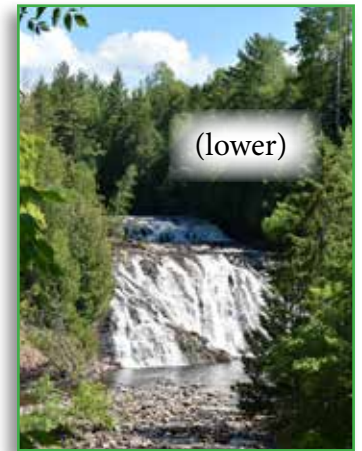
46.461142° 90.53032°

90 feet. Potato River (Gurney area). Head south from U.S. 2 on Hwy. 169 for approx. 2.8 miles (through town of Gurney). Turn west on Potato River Falls Road, continue for 1.5 miles. Town Park with rustic campsites available.

131 stairs to Upper and 204 stairs to Lower Falls.

ATV/UTV access via routes.

[Travel difficulty: Easy](#) [Trail difficulty: Difficult](#)



Upson Falls

46.371214° 90.412041°

20 feet. Potato River (Upson area). Take Hwy. 77 west from Hurley into Upson. Turn right (north) on Hoyt Ave. (at Upson Town Park sign), then left at end of street. After crossing the river, turn left into Upson Town Park. Camping and picnic area available. ATV/UTV access via routes.

[Travel difficulty: Easy](#) [Trail difficulty: Moderate](#)

Rouse Falls

46.370681°90.479515°

15 feet. Travel west from Upson about 2.5 miles on Hwy. 77. Take a right on Casey Sag Rd. and follow 1 mile north. Sign will be on the right, trail on the left side. It will be a rustic trail for 0.3 miles and about a 0.75 mile hike.

[Travel difficulty: Moderate](#) [Trail difficulty: Moderate](#)

Wren Falls

46.407357° 90.516937°

15 feet. Tyler Forks River. About 5.5 miles south of U.S. 2 on Hwy. 169. Take a left (east) turn on Vogues Rd. Follow the gravel road for 3.5 miles to where Vogues Rd. meets Casey Sag Rd and Wren Falls Rd. Take Wren Falls Road for 1.4 miles. Park, then hike up the hill to a primitive campsite above the north side of the falls.

[Travel difficulty: Moderate](#) [Trail difficulty: Moderate](#)



Foster Falls

46.420819° 90.459129°

25 feet. (Potato River) From Upson head north on Hwy. 122 for 5 miles. Turn left (west) on Sullivan Rd. Go 2 miles. Falls will be on the right.

[Travel difficulty: Moderate](#) [Trail difficulty: Easy](#)

Kimball Falls

46.486042° 90.26099°

10 feet. West Branch Montreal River (Hurley area). Travel west out of Hurley on U.S. 2 for 3 miles, turn left (south) on Park Road and continue 0.2 miles. Turn right (west) on Town Park Road. Picnic area and pavilion.

[Travel difficulty: Easy](#) [Trail difficulty: Easy](#)

Interstate Falls

46.47552° 90.20085°

18 feet. East Branch Montreal River (Hurley area). Take U.S. 2 west of Hurley for 0.6 miles, turn right on gravel road at Interstate Falls signage. Follow road straight for approx. 0.3 miles to parking on left. There's a nice, short walking trail to the falls, benches & viewing deck.

[Travel difficulty: Easy](#) [Trail difficulty: Easy](#)



Spring Camp Falls

46.347726° 90.239342°

20 feet. West Branch Montreal River.

There are two routes to this waterfall.

#1 From Hurley via U.S. 51 south, travel 4.5 miles, turn right (west) on County C. About 1.5 miles west, the county road turns sharply north - don't take that! Go straight, onto the gravel road (Island Lake Road). After about a mile it turns south, follow Island Lake Road about another 3 miles to Falls Road. Turn right, go about 1.2 miles. This portion of the road is more like a trail and can be quite rough. Once there, follow rustic path signs.

#2 From Hurley take Hwy. 77W for about 4 miles to South Elm Street. Turn left and follow approx. 0.4 miles (road turns sharply to right) to Spring Camp Road. Turn left (south) and go about 5.1 miles down Spring Camp Road (you will cross West Branch Rd.).



Continue until you reach a very rough logging road on the left (not suitable for a car). Follow 0.9 miles to falls. ATV/UTV access via Trail 13.

[Travel difficulty: Difficult](#) [Trail difficulty: Moderate](#)

Lake of the Falls

46.150491° 90.151973°

10 feet. Turtle River (Mercer-Turtle Flambeau Flowage area). Travel north from Mercer on U.S. 51 for 1.4 miles. Turn left (west) on County FF and proceed 5.2 miles. Turn left at Iron County Park/Lake of the Falls sign. Here you'll find Popkos Circle picnic and rustic camping facilities & a boat landing with access to Turtle-Flambeau Flowage via the Turtle River.

[Travel difficulty: Easy](#) [Trail difficulty: Easy](#)

Copper Falls

46.20518° 90.38340°

Copper Falls State Park offers spectacular waterfalls and deep gorges, hiking, bicycling, picnicking, fishing, swimming, and camping. Concessions open seasonally. Located about 2 miles northeast of Mellen in Ashland County. From Mellen head north on Hwy. 13 (0.5 mi.), turn right on Hwy. 169. Go about 1.8 miles. The park entrance will be on your left.

Nearby in MICHIGAN

In Bessemer, turn north on County 513, (approx. 14 miles to falls). Follow signs to Copper Peak and Black River Harbor. After passing Copper Peak look for signs to falls. All falls will be on the right. For additional information Google:

Black River Parkway Falls

Great Conglomerate Falls - 30 feet. Easy access walking trail is 0.75 miles.

Potawatomi Falls - 30 feet.

Easy access walking trail is approx. 0.125 miles. Handicap access.

Gorge Falls - 25 feet.

Easy access walking trail is approx. 0.125 miles.

Sandstone Falls - 15 feet.

Easy access walking trail is approx. 0.25 miles.

Rainbow Falls - 30 feet.

Easy access walking trail is approx. 0.5 miles.

We hope everyone enjoys visiting our Waterfalls.

- Please stay on marked trails and designated viewing areas as waterfalls are powerful and can be dangerous. Do not attempt to cross or swim at these locations.
- Always respect the private landowners property, otherwise the privilege for public viewing may be revoked.
- Many are located in more remote, wild regions; for this reason there is little to no cell phone service.
- Also, be cautious of ATVs & UTVs traveling in some of these areas.

Camping & Recreation Areas

Iron County offers a variety of camping options, from full RV hook-up to rustic wilderness tent camping. Some of the campgrounds have direct access to ATV/UTV and snowmobile trails. Many require reservations while others are on a first come, first serve basis.

COUNTY PARKS

A fee is required for all activities at County Parks.

Daily and weekly camping rates available.
Contact: Iron County Forestry Department
607 3rd Ave. N, Suite 2, Hurley, WI 54534
715-561-2697 www.ironcountyforest.org

Lake of the Falls

4720W County Park Rd., Mercer, WI 54547
For reservations visit: www.ironcountyforest.org
3 camping areas. Side 1 has electrical, pavilion, pit toilets, water & boat launch. Quiet side 2 has lakeside campsites, no electric, pit toilet & water. Side 3 has electrical, flush toilets/showers, pit toilets, dump station & water. On the Turtle River with boat access to the Turtle Flambeau Flowage.



Schomberg Park

9701N US-51, Hurley, WI 54534
For reservations visit: www.ironcountyforest.org
ATV Trail Access off Trail 13C.
10 electrical campsites, 4 walk in tent sites, fire rings & picnic tables, water available, showers/restroom, pavilion, dump station, & ATV washstation.



Saxon Harbor

10045 N County Hwy. A, Saxon, WI 54559
For reservations visit: www.ironcountyforest.org.
ATV & Snowmobile Trail Access via Harbor Drive (road route).
Marina with 81 boat slips on Lake Superior, transient docking, electricity & water, 3 boat launches, kayak launch, gasoline/fuel, restrooms/showers, pavilion, dump station. Playground, WIFI, beach access, swimming, fishing, boating. Campground has 26 sites with 20/30/50 amp & water, restrooms/showers, plus 5 walk in tent sites. All have firepits & picnic tables.



Weber Lake

9110W County Hwy E, Upson, WI 54565
ATV Trail Access off Trail 6.
For reservations visit: www.ironcountyforest.org.
12 campsites: 11 electrical, 1 tent. Weber Lake is a slow no wake lake and is an excellent panfish and trout fishing lake. Fire rings & picnic tables, water available, flush toilets and showers, dump station, pavilion, boat launch, playground, paddling. Close access to Uller ski/hiking trail. Whitecap Mountain Resort and Skye Golf are adjacent to the County Park property.



COUNTY FOREST RECREATION AREAS

Foster Falls

2.5 miles west off Hwy. 122 on Sullivan Fire Lane.

1 primitive campsite, fire ring, privy. Waterfalls on Potato River. Trout fishing. First come, first served (no reservations). No fees, 14 day limit.

Potato River Falls

2 miles west of Hwy. 169 on Potato River Falls Rd. in Gurney, WI.

ATV access via routes.

5 primitive campsites, fire rings & picnic tables, pit toilets, pavilion. First come, first served (no reservations). No fees, 14 day limit. Hiking trails & trout fishing.

Shay's Mill Dam

3 miles east of County Hwy. H on Fisher Lake Rd. in Mercer, WI.

3 primitive campsites, fire rings & picnic tables. Paddle craft & boat launch into the Turtle River. First come, first served (no reservations).

No fees, 14 day limit. Fishing.

Wren Falls

4.5 miles southeast off Hwy. 169 via Vogues Rd. and Wren Falls Rd.

1 primitive campsite, fire ring, privy. Waterfalls on Tyler Fork River and North Country Trail access. First come, first served (no reservations). No fees, 14 day limit.



STATE CAMPGROUNDS

State parks require firewood to be purchased from local vendors and not brought from outside 10 miles of the area you are visiting.

Sandy Beach Campground

5 Miles South on Hwy. 47 from the Town of Manitowish, left on Powell Marsh Rd. 1.5 miles.

Rustic campsites (fee), toilets, picnic area & tables, fire rings, drinking water, swimming, boat launch, fishing.

For info.: <https://dnr.wi.gov/topic/StateForests/nhal/camping.html>

Turtle Flambeau Flowage

This scenic waters area offers remote campsites accessible by water only. Available year round on a first come, first served basis. No fee.

Camping only at designated sites (steel fire ring and open air pit toilets). 58 sites & 2 group sites. For more info. & reservations visit:

<http://dnr.wi.gov/topic/Lands/TurtleFlambeau/camping.html>



Camping & Recreation Areas

TOWN PARKS

Carow Community Park

Contact: Mercer Town Clerk 715-476-2403

Located on Grand Portage Lake in Mercer 2 miles east on County Hwy J. Picnic area & tables, pavilion (rental available), restrooms, swimming area & playground.

Cary Road Park

Contact: Hurley Clerk's Office

715-561-4715

Park location: Hwy. 77, Hurley, WI.

Concession stand available, softball field, volleyball courts, bocce ball, horseshoe pits, playground, walking trail.



Gile Park

Contact: Montreal Town Clerk 715-561-4955

From Hurley on Hwy 77, left into Gile to Flowage.

Picnic area & tables, firepits, drinking water, pavilion (rental fee), rest rooms, changing rooms, slide & swings, boat launch, fishing.

Camping only on islands. Park closes at 10 pm.

Kimball Town Park

Contact: Ron Ahonen 715-561-2448.

5 miles west on US-2 from Hurley, turn south on Park Rd., go 0.2 miles, turn right on W Town Park Road, travel to end of road. Located on the Montreal River.

Picnic area & tables, fireplaces, pavilion w/electrical outlets, restrooms, well water, swings, volleyball & basketball court, waterfalls, fishing w/handicapped accessible fishing deck, unisex restrooms (handicap accessible), walking trail. First come, first served.



Oma Town Park

Contact: Alexandra Mabie 715-600-8077

13 Miles South of Hurley off County Hwy. G.

Pavilion, picnic area, outhouse, boat ramp, fishing, swimming, swings & slide.

Riccelli Park

Contact: Hurley Clerk's Office

715-561-4715

Park location: NW corner of Hurley, north on 5th Ave., west on Poplar St., then continue straight. Picnic area & tables, pavilion w/electrical, rest rooms, playground, basketball court.



Upton Community Park

9564 Upton Park Rd., Upton, WI (on Potato River)

ATV Trail Accessible.

Picnic area & tables, fireplaces, pavilion, restrooms, 4 overnight camping sites (donations appreciated), firewood available, electric, waterfalls, trout fishing. First come, first served.

PRIVATE CAMPGROUNDS

Beaver's Resort

www.beaversresort.org

715-476-3412

On Lake of the Falls, 6 miles west of Mercer on County Hwy. FF at 4720N Lake of the Falls Rd.

Snowmobile trail access (trail 12)

5 rustic cabins, 14' boat rental, concrete boat ramp, fish house, 3 primitive campsites w/electric \$15/night, fire pits, indoor flush toilets, swimming, paddle boats, bar/food.



Frontier Bar & Campground

www.frontierbarandcampground.com

715-893-2461

Located on US-2 West at Junction with Hwy. 169.

ATV & Snowmobile Trail Access.

45 sites, tent and RV camping with full hookups, laundry, showers, fireplaces/firewood, picnic tables, playground, basketball court, horseshoe pits, driving range, free WiFi, bar, groceries, service station. Daily, weekly, & monthly rates.

Joe Miller's Resort

www.joemillersresort.com

715-476-2505

6600W Miller Rd., Butternut, WI

On the Turtle Flambeau Flowage.

Electric & water hook-ups or wilderness, showers, flush toilets, firewood, playground, swimming, boats, gas, cabins, full bar.



Loon Lagoon RV Park and Campground

www.loonlagoon.org

715-476-2466

2580 W Margaret St., Mercer, WI

ATV trail access.

40 units, full electric and water hookups, overnight camping, boat ramps, dock, fishing. Seasonal & weekly rates.

River's Edge

www.riversedgemw.com

715-543-8070

263 S US Hwy 51

Manitowish Waters, WI 54545

On the Mercer-Manitowish bike trail, Manitowish River, and Mercer snowmobile trail.

There are three back-in campsites with full hookups. Additional lodging is available in the main lodge.

The Driftwood

715-893-2277

9936W Co Rd A, Saxon, WI

Located 1/2 mi. from the Saxon Harbor County Park.

ATV & Snowmobile Trail Access.

Bar & restaurant. Total of 15 large campsites, electrical on 10. Water available outside of bar.

IRON COUNTY FOREST LAND

Camping is allowed anywhere, anytime on the Iron County Forest Land up to 14 days. Please leave no trace.

For locations request a ["Sportsman's & Outdoor Recreation Map"](#) from any of the offices on the back of this brochure.

Golfing

Eagle Bluff Golf Course

<https://www.golfeaglebluff.com/>

715-561-3552

13506 County Trunk D

Hurley, WI 54534

The beautiful Penokee Mountains in Northern Wisconsin are the setting for the 18 hole Eagle Bluff Golf Course featuring three sets of tees, beautiful fairways, manicured greens, and breathtaking vistas overlooking Lake Superior, Hurley and Ironwood. It has something for everyone, and every skill level.

Eagle Bluff provides covered carts, a fully stocked pro shop, and putting green.

Memberships and Special Green Fee packages are available.

The Eagle Bluff Club House features a beautiful scenic air conditioned club house with a deck at the top of the mountain. The Club house has a full service bar with lunch available daily.

Skye Golf Whitecap Mountains

<https://whitecapresort.com/summer-activities/golf>

715-561-2227

9106 W. Cty Rd. E

Upson, WI 54565

Skye Golf Club is cut into the ski runs and trails of Whitecap Mountains. Designed by renowned golf architect Garret Gill, our one-of-a-kind golf course is scenic, challenging, and peaceful. Enjoy nine holes while overlooking Iron County, Lake Superior, and Weber Lake.



Tahoe Lynx Golf Club

<http://www.tahoelynx.com/>

715-476-0050

5195 N. Pierpont Dr.

Mercer, WI 54547

The golf course is located just 1.5 miles from downtown Mercer, WI. It is a beautiful 9 hole golf course where players of all ages and skill levels are welcome. There will be no rangers asking to pick up pace of play so come by, take your time, and enjoy yourself. Just make sure to bring enough golf balls.

Attractions

The birth of Iron County was “Rooted in the Resources” – iron, timber, people. The rush for the “red gold”, we call iron ore, shaped the people and places along the Penokee Iron Range Heritage Trail from the 1880’s to today. The structures left behind, such as the Plummer Mine Head Frame, helped to tell the story of the transformation of the area.

B-47 Crash Site

N 46° 19.155W 90° 14.438

Memorial near the crash sites of two B-47 Stratojets on training missions in northern Wisconsin. The memorial site includes an impressive display of signs, flags, retaining walls, benches, as well as the recovered canopy and ejection seat from one of the aircraft.

The site of these crashes is about 10 miles south of Hurley, WI. From Hurley take Hwy. 77W for approx. 0.5 miles, turn left on County C. Follow for another 4.5 miles to Island Lake Rd. Turn right on Island Lake Rd. and travel approx. 6 miles to Pit Road. It’s another 0.7 mile to site.



Corrigan’s Lookout

Breathtaking overlook located off Hwy 122 in Upsan, Wisconsin. The site features a 0.25 mile hike to a rock outcrop overlooking Upsan Lake to the west, the Gogebic Range to the south, and Lake Superior to the north.



Iron County Historical Society Museum

715-561-2244

Location: 303 Iron St., Hurley, WI Located in the old courthouse which is listed in the National Register of Historic Places. The museum has three full floors of historical artifacts, publications, documents, and photographs dating from before Iron County was founded in 1893 to recent years. Visit the many exhibits on logging and mining, important industries in Iron County’s history. You can also see volunteers running old looms making traditional rag rugs which are for sale. Also, no visit would be complete without a stop to the clock tower and weaving room.



Gold Mine Historical Site

From Hurley travel approx. 15.3 miles west on Hwy 77.

Turn right (north) on Casey Sag Rd. Follow another 2.4 miles to the North Country Trail sign. Park and walk the North Country Trail to the west for 1 mile to site.



Little Finland Museum

715-561-4360

(Located 3 miles west of Hurley, WI on US- 2W)

For hours of operation visit: www.littlefinland.org

Little Finland is the home of the National Finnish American Festival. The museum holds a wonderful collection of Finnish artifacts. The Harma House and Haaro House are log homes of Finnish immigrant families which have been moved and rebuilt on the grounds to house the Cultural Museum. The building's timbers, once a part of the historic Ashland ore docks, are notched together using unique Finnish "fish tail" construction.

Of special interest is the Finnish/American Settlers' Memorial Monument, the Banfield Pavilion, the Taipale Trail (nature/ski trail), a Fire Circle, and an authentic Finnish sauna!

A gift shop is located in the main building, offering a wide selection of Scandinavian gifts.



Montreal Company Location Historic District

Charming white houses provided by the mining company to employees line the gently curving street that mark the City of Montreal - the only planned mining company town in Wisconsin. Much of the area was designed by landscape architect Albert Davis Taylor and were constructed from 1907 to 1927.



City of Montreal State Geological Marker

Located on Hwy. 77W in Montreal. Picnic and pavilion area along the scenic West Branch of the Montreal River.

The community of Montreal grew up around iron mining at the world's deepest iron ore mine, while neighboring Gile developed as a lumber company town.



Copper Peak Ski Fly Hill

<http://copperpeak.net>

Copper Peak is the only ski flying hill outside of Europe.

Location: N13870 Copper Peak Rd., Ironwood, MI



For more information on Copper Peak and other neighboring attractions in Michigan visit:

<http://www.ironwoodchamber.org/>

* Request our
Iron County *"Heritage Area Map"*.

Attractions

Pence, WI Log Buildings

Italian and Coriscan immigrants settled in Pence in the late 1880's to work in the iron mines or the forest. They built their homes and outbuildings using logs and other materials at hand.

Over 20 unique log buildings, representing different styles of log construction handiwork are scattered throughout the small town. Most are visible from side streets giving Pence the greatest concentrations of log buildings in Wisconsin for a community of its size.



Wisconsin DOT Rest Area

Located immediately south of the US-2 and the US-51 interchange in Hurley. Features State historical marker, displays and photos that interpret the history of iron mining on the Penokee Range. A unique outdoor sun dial depicts the dawning and decline of iron mining. Cores of solid rock taken from a mine shaft surround the sun dial. Rest area and picnic sites.



Plummer Mine Headframe Interpretive Park

Located on Hwy. 77W between Pence and Iron Belt, WI Iron was the prime resource that once made this a booming community. The only remaining head frame from the old mining days in Wisconsin stands just west of Hurley at the Plummer Mine Interpretive Park. The 80 foot head frame is the last of these steel structures that once dominated the skyline of the Penokee Iron Range, later known as the Gogebic Range. It is listed on the National Register of Historic Places. The Plummer Mine shaft angles downward from the headframe following a vein of ore into the earth to a depth of 2,367 feet. The Plummer Mine closed in 1924. From an engine house, cables ran up over the wheels at the top of the headframe and were attached to elevator cars, lowering miners and equipment underground and pulling ore cars back to the surface.



Vietnam Memorial Tank and Helicopter

Location: US-51 Hurley, WI / next to Courthouse. (South of town on west side of US-51 at Taconite St.)

Iron County's Vietnam War Memorial features an M60 tank and a Huey Cobra attack helicopter tilted on a pole in firefight mode.



Claire d' Loon

Location: 5150 N. US-51, Mercer, WI

World's largest talking loon statue located in Mercer, WI, the Loon Capital of the World!

This attraction is approx. 16 ft. high and weighs about 2,000 lbs.



Mercer Depot Museum

For hours call: 715-476-2216

Location: Railroad Street, Mercer, WI

Enter into an authentic railroad depot and step back in time. Built in 1905, it is the only remaining wooden rail depot in Iron County. It represents a time when travel by rail replaced travel via the Flambeau Trail. The Depot, the Soo Line caboose, the original jailhouse, the one room school-house and the barbershop all have been lovingly restored to replicate the days of yesteryear. Here you will find books, artifacts, pictures and vintage clothing of Mercer since it was established in 1894.

The Depot Museum is run by a wonderful group of volunteers.



Veterans Memorial Park of Mercer

Location: US-51, Mercer, WI

Honors all American Veterans. Memorial bricks are placed in park to honor veterans.



Mercer Public Library & Smokey the Bear

Phone: 715-476-2366

Location: 2648 W. Margaret St., Mercer, WI

Mercer became the birthplace of the first Smokey the Bear costume created by Mercer's Forest Rangers to teach fire safety in 1950. That original Smokey Bear head is protected in a glass enclosure and housed at the Mercer Public Library. Smokey Bear's message that "Only you can prevent wildfires" still resonates with kids and adults alike today.



Color Tour Routes

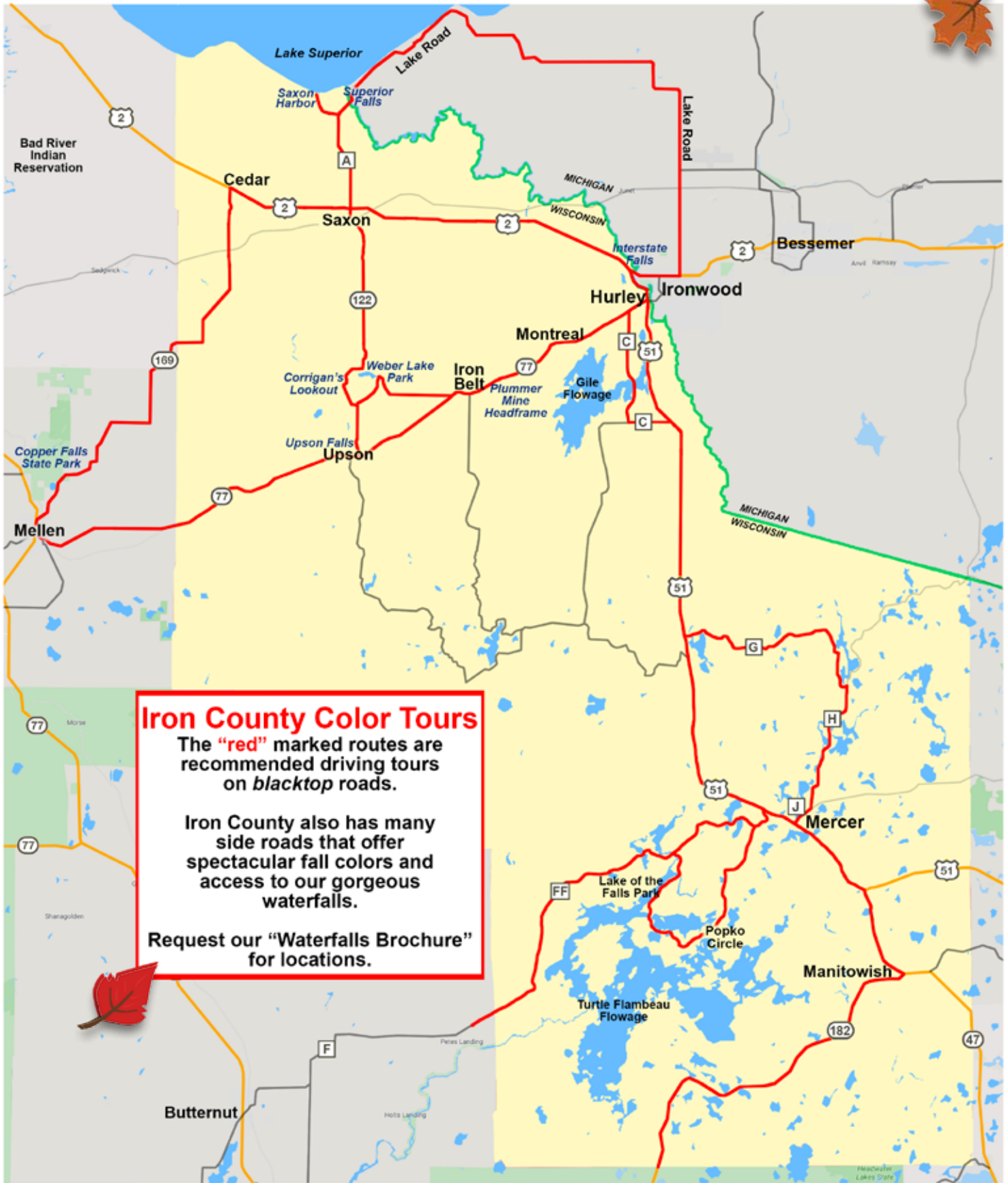


As September draws to a close, the days get shorter and the trees and other plants prepare themselves for the winter. Since there isn't enough light and water during the winter for photosynthesis, trees go into a rest-mode. While processes shut down, chlorophyll starts to disappear from the leaves, taking away the green color. As the green fades, the leaves show other colors that have been there all along; yellow and orange. They have been hidden all summer by chlorophyll and during the fall, it is their time to shine! Unlike the bright colors of flowers, which attract pollinators, the bright colors of fall foliage have no apparent biological function or significance.

The brilliance of colors you see every fall is directly related to the weather conditions. The brightest colors are seen when late summer is dry and autumn has bright sunny days and cool evenings. A good supply of rainfall also keeps the leaves on trees longer and helps to enhance the color.

In Iron County our hardwood forests show spectacular color with many opportunities to view beautiful vistas, lakes and waterfalls. Iron County's varied terrain offers hilly vistas along the Penokee Range from Hurley to Mellen, views of Lake Superior at Saxon Harbor and hundreds of lakes including the mighty Turtle Flambeau and Gile Flowages. The suggested routes are all on blacktop roads for easy traveling, but if you are up for an adventure, you'll find many side roads that get you off the beaten path for an extended color show!





Living in IRON COUNTY WISCONSIN

An Active Community

Iron County is a destination for four-season recreation and a get-away from all the hustle and bustle of busy city life. Both residents and non-residents alike enjoy an active lifestyle amid our beautiful outdoors. ATVing, snowmobiling, biking, canoeing and kayaking, skiing, snowshoeing, camping, fishing and hunting are just part of a long list of outdoor activities.

We have a good number of organizations that have been enhancing our recreational opportunities for decades. The benefits of outdoor recreation to communities range from workforce recruitment and retention, visitor attraction and spending, and quality of life for residents. Here is a list of some of the organizations that are making things better:

- **White Thunder Riders** have been developing and maintaining snowmobile trails since 1970. With over 200 members and 350 miles of trails, this club plays a big role in bringing thousands into the area each winter.
- **Mercer Sno Goers** was established in 1967 and maintain 220 miles of trails and also play a big role in bringing thousands into the area.
- **Iron County ATV Club and Dusty Loons ATV Club** maintain about 250 miles of trails throughout the county.
- **MECCA Trails** was established in 1973 to promote silent sports on the trail system. MECCA has constantly upgraded this trail system with facilities and equipment to become a destination for users.
- **Penokee Rangers** are in their 47th year of maintaining the Montreal and Uller Ski Trails.
- **Iron County Forestry and Parks** manages the fourth largest county forest in Wisconsin at 175,000 acres along with five county parks including Saxon Harbor, the only county owned marina on Lake Superior. They also oversee 400 miles of motorized trails.
- **Timber harvesting** has created the base for many of our trails. Without forest management we would have fewer trails or trails that cost more to develop.
- **Numerous Lake Associations** who have been in existence for 30-40 years completing projects to protect lakes, increase fish habitat, improve public access and improve environmental quality.
- **Turtle Flambeau Flowage Association** comprised of 19,000 acres of water and 35,500 acres of land that received protected wilderness status in 1992. The area offers a multitude of outdoor recreational opportunities.
- **Friends of the Gile Flowage** has completed a number of projects to protect and enhance one of the last undeveloped large bodies of water in Wisconsin.
- **Waterfall Planner** on the Iron County Development Zone website takes you to eleven waterfalls right from your mobile device. These are among the highest concentrations and highest waterfalls in Wisconsin.
- **NICER is Northern Iron County Engaged Residents** who have a number of community projects to help the area to be a better place to live. In economic development circles it's called place-making which seeks to make communities an attractive place to be. People who want to be in your community will make it grow and prosper.
- **ICORE is Iron County Outdoor Recreation Enthusiasts**, a group who promotes silent sports activities, provides opportunities for volunteers who develop and expand recreational opportunities and provides a space for enthusiasts to meet up and participate in a variety of recreational pursuits.
- **Mercer Bike Trail** is a seven and a half mile paved trail that connects with over 40 miles of trails in Vilas County. The town of Mercer was instrumental in developing the trail which is now recognized as a National Recreational Trail.
- **Iron Belle Trail** in Michigan has a trailhead in Hurley, WI and travels 20 miles to Ramsey, MI.
- **Wisconsin State Forests** and natural areas provide a wide range of recreational opportunities.
- **Numerous scenic sites** around the county are managed by a variety of groups. These include Corrigan's Bluff, Plummer Mine and Mercer's Talking Loon.
- **The Hurley and Mercer Area Chambers of Commerce** hold events annually that showcase our outdoor activities.
- **Hunter walking trails** are promoted in the Iron County Forest as well as the Turtle Flambeau Flowage area.
- **The Northwoods Wildlife and Wetlands Club** maintains a shooting range in the Mercer area, while another range is located in the Town of Knight.
- **Hurley and Mercer Downtowns.** Streetscape projects in both communities have improved the appearance of the downtowns.
- **Telecommuter Forward Community** as recognized by the PSC allows outdoor recreational enthusiasts to know the area is moving forward with its broadband efforts.

Quality of Life

Iron County is about more than just business. It's a standard of living. Iron County is a destination for four-season recreation and a get-away from all the hustle and bustle of busy city life. Both residents and non-residents alike enjoy an active lifestyle amid our beautiful outdoors. Iron County is just "north enough" to escape the crowds. We still have that small town feel.

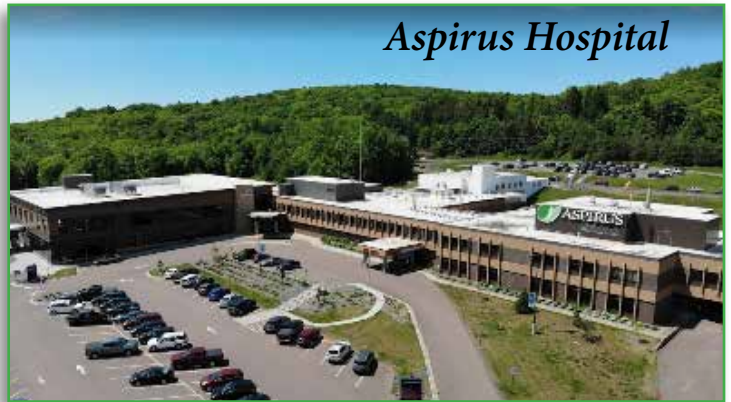
The cost of living is substantially lower here than the national average and much lower than most large metro areas and we have much shorter commute times.

Crime rates are among the lowest in Wisconsin.

We place a high value on education and our K-12 classes have a small teacher/student ratio, providing ample opportunity for individualized attention and quality learning. Drop out rates are among the lowest in Wisconsin. Post secondary, vocational, and two universities are within driving distance.

An option available for seniors based in Iron County is Fe University, a non-accredited, nonprofit "college". Since 2014, it has offered over 100 short-term college level classes on a wide variety of topics in the Northwoods and beyond. More information can be found on their website: feuniversity.org

Modern health care facilities and medical professionals are readily available in the Greater Iron County area as well as the greatest concentration of fine arts and cultural events of any northern Wisconsin community.



Iron County is recognized as a Telecommuter Forward Community.

As our broadband coverage continues to improve and expand, opportunities for telecommuting “workcations” and “schoolcations” are becoming more feasible.

As an available option, the public library offers free WIFI access in a quiet atmosphere. Some other local businesses also offer WIFI access to their patrons.

telecommuter
forward!
Community



New Business Opportunities

Iron County offers your business and family unique relocation or expansion opportunities away from it all as new potential for home-based telecommuting continues to improve.

The Iron County Development Zone office provides technical support and business assistance to connect new and existing businesses to the appropriate resources to meet their needs. Iron County along with cities, towns, chambers, utilities, banks and the development corporation all contribute to fund economic development activities in the county. The Development Zone also participates in many community development projects to make Iron County, WI more attractive for business development.



Revolving Loan Fund Programs

The loan programs operated under the Northwest Regional Planning Commission (NWRPC) by the Northwest Wisconsin Business Development Corporation (NWBDC), Wisconsin Business Innovation Corporation (WBIC) and Northwest Wisconsin Regional Economic Development Fund, Inc. (NWREDF) are administered in partnership with local communities.

The loan funds provide low-cost financing for businesses seeking to either start or expand their operations in rural areas. Each loan fund has slightly varying requirements.

Loans may be used for:

- Acquisition of land and buildings
- Site preparation, construction
- Remodeling of an existing building
- Purchase of machinery and equipment
- Startup costs
- Working capital
- Business acquisitions when the loan will keep the business from closing, prevent the loss of employment opportunities, or provide expanding job opportunities.

The applicant must demonstrate that the proposed project is viable and that the business will have the economic ability to repay the loan.

Businesses located in the ten counties of the Northwest Wisconsin region including Ashland, Bayfield, Burnett, Douglas, Price, Iron, Rusk, Sawyer, Taylor, and Washburn are eligible to apply.

Wisconsin Economic Development Corporation

Wisconsin offers a range of programs that provide financial and technical assistance to companies looking to start and grow their operations in the state. From launching a new idea to reaching new markets, your business receives the support it needs from the Wisconsin Economic Development Corporation (WEDC) and a state-wide network of partners committed to your success. In Wisconsin, you have not only the opportunity, but the resources you need to think big and accomplish more. Explore our business development programs to discover how you can make something remarkable happen in Wisconsin.

Small Business Development Center-UW Superior

Wisconsin SBDC is here to help you start your business through no-cost confidential consulting with experienced professionals, relevant and affordable business training and specialized programs for startup entrepreneurs.

Now that you have an idea, you need a business model to help answer questions like:

Who will be your best customers?

Why will they buy your products?

What can you change?

Launch and manage your successful company through no-cost confidential consulting and business education to assist with startup planning, financing, sales/marketing, new products/services/markets, financial management and operations.

The Northwest Wisconsin Workforce Investment Board (NWWIB)

is an American Job Center and a non-profit workforce resource serving 10 counties of northwest Wisconsin: Ashland, Bayfield, Burnett, Douglas, Price, Iron, Rusk, Sawyer, Taylor, and Washburn. Our partners, programs, and services are dedicated to strengthening the Wisconsin workforce and connecting people to opportunities, whether you're a career seeker or employer.

On-the-Job Training (OJT) is a win-win for both employers and job seekers. OJT reimburses employers for the costs associated with training a new employee and also helps job seekers gain skills while earning a wage.

Customized training is training that is designed and conducted to meet the special requirements of an employer or industry sector. Continuous training and worker development keeps your employees on the cutting edge of industry developments.

BUSINESS RESOURCES & FUNDING:

Iron County Development Zone

www.ironcountywi.com

Northwest Regional Planning Commission

www.nwrpc.com

WEDC (WI Econ. Dev. Corp.)

www.inwisconsin.com

Small Business Development Center

www.wisconsinsbdc.org/centers/superior

SBA (Small Business Administration)

www.sba.gov

Lodging

Our wild nature is tempered with comfortable lodging ranging from cabins and resorts to motels with indoor pools and whirlpools to ease the muscles after a long day of exploring and enjoying our beautiful northwoods.

Badger Motel

<https://badgermotel.net/>

715-561-4510

1170N Johnson St.

Iron Belt, WI 54536

ATV/Snowmobile trail access



Days Inn of Hurley

715-629-9731

13355N US-51

Hurley, WI 54534

Indoor pool

Free continental breakfast

Located next to grocery

ATV/Snowmobile trail access



Harmel's Bear Den

715-561-3085

620 US-51

Hurley, WI 54534

Small, privately owned motel w/bar

ATV/Snowmobile trail access

Haven North Condos

havennorth.com

715-561-5626

1075 LaRue Ct.

Hurley, WI 54534

Units fully furnished

Located on Lake Michele

ATV/Snowmobile trail access

Pioneer Cleaning & Lodging

<https://www.pioneerlodging.com/>

906-932-0746

Offering several vacation homes and cottages in the Hurley area.

Silver Street Motel

silver-street-motel.business.site

715-561-2324

100 Silver St.

Hurley, WI 54534

Downtown mainstreet

Located next to grocery

ATV/Snowmobile trail access



Ski Haus #10

Google "[ski haus #10 Montreal WI](#)"

608-237-1091

126 Wisconsin Ave.

Montreal, WI 54550

ATV/Snowmobile trail access



Whitecap Mtns. Resort

whitecapresort.com

715-561-2227

9106 W Cty. Rd E

Upton, WI 54565

Indoor pool and Weber Lake access

Units fully furnished

Skiing/snowboarding & rentals

ATV/Snowmobile trail access

All Season Rentals

920-323-7510

3413 Tutt Rd.

Mercer, WI 54547

Turtle Flambeau Flowage

Beaver Lodge Bar & Resort

beaverlodgemercerwi.com

715-476-2004

2010 Beaver Lodge Circle

Mercer, WI 54547

Lake Martha, 18 rooms

ATV/Snowmobile trail access



Beaver's Resort

beaversresort.org

715-476-3412

4720 W Lake of the Falls Rd.

Mercer, WI 54547

5 cabins

Snowmobile trail access



Big Bear Family Cabins LLC

608-575-1343

W1991 Beaver Lodge Rd.

Mercer, WI 54547

Lake Martha, 1 cabin/6 bdrm.

ATV/Snowmobile trail access

Birch Point's Turtle Chalet

www.turtlechalet.com

847-309-1622

4151N Pine Rd.

Mercer, WI 54547

Turtle Flambeau Flowage

Cedar Cove Cabins

cedarcovecabins.com

715-476-2511
2964 Hiawatha Rd.
Butternut, WI 54514
5 cabins
ATV/Snowmobile trail access



Cranberry Inn

cranberryinnofmercer.com

715-476-3451
5491 US-51
Mercer, WI 54547
8 rooms, 1 dorm & 7 cabins
ATV/Snowmobile trail access



Cry of the Loon Resort LLC

cryoftheloonresort.com

715-476-2502
6505 Omearas Rd. S
Butternut, WI 54514
Lake Bastine/4 cabins
ATV trail access

Deadhorse Lodge

deadhorselodge.com

715-544-5851/715-776-0676
4125 N Popko Circle W
Mercer, WI 54547
Lodge & 7 cabins
ATV/Snowmobile trail access

Donner's Bay Resort

715-476-2555
2974 Hiawatha Rd.
Butternut, WI 54514
6 cabins
ATV/Snowmobile trail access

Echo Lake Retreat

414-581-3278
Echo Lake
Mercer, WI 54547
1 unit
Snowmobile trail access



Flambeau Lodging (Dear Lodge)

flambeaulodging.com

715-476-2549
4816 County Hwy. FF
Mercer, WI 54547
Trude Lake, 4 units
ATV/Snowmobile trail access

Flambeau Vista Retreat Cabins

flambeauvista.com

715-492-4823
6440 Flambeau Trail
Butternut, WI 54514
Lake Bastine, 2 cabins
ATV/Snowmobile trail access



Fort Flambeau

<https://www.upnorthvacationlodging.com/vacation-rental-home.asp?Page-DataID=48243>

715-762-3291
6168 Downey Rd.
Mercer, WI 54547
2 units

Gateway Lodge & Resort

thegatewaylodge.com

715-476-7878
4695 N Popko Circle W
Mercer, WI 54547
7 cabins/2 apts.
ATV/Snowmobile trail access



Grand Portage Lakes Cabins

grandportagelakecabins.com

760-809-5232
Grand Portage Lake
Mercer, WI 54547
2 units



Great Escape at Cedar Lodge

<https://cedarlodge.weebly.com>

715-828-2334
2964 N Hiawatha Rd.
Butternut, WI 54514
1 lodge/sleeps 40+
Snowmobile trail access



Great Northern Hotel

greatnorthernmercer.com

715-476-2440
5070 US-51
Mercer, WI 54547
San Domingo Lake, 80 rooms
ATV/Snowmobile trail access

Horns Cabins

hornscabins.com

715-896-4434
1560 Margaret Lake Rd.
Mercer, WI 54547
Margaret Lake, 2 cabins
ATV trail access



Joe Miller's Cottages

joemillersresort.com

715-476-3712
6600 W Miller Rd
Butternut, WI 54514
Lake Bastine, 5 cabins



Lake Bastine Lodge

lakebastinelodge.com

262-542-1424
6550 Turtle Flambeau Dam Rd.
Butternut, WI 54514
Lake Bastine, 2 units



Loon Lagoon RV Park & Campground

loonlagoon.org

715-476-2466
2580 Margaret St.
Mercer, WI 54547
Grand Portage Lake, 40 lots
ATV trail access

Loon's Nest Motel

loonnestmotel.com

715-476-2330
5202 US-51
Mercer, WI 54547
9 rooms/1 cabin
ATV/Snowmobile trail access



Musky Point Resort

muskypointresort.com

715-476-7810
4946 Musky Point Rd.
Mercer, WI 54547
Lake of the Falls, 2 cabins
ATV trail access



Nites Inn

northernexposurenitesinn.net

715-476-3586
5065 US-51
Mercer, WI 54547
12 units
Near ATV/Snowmobile trail access



Northland Lodging

northlandlodging.com

715-476-2305
Lake Bastine
Mercer, WI 54547
20 units

Paradise Point Rentals

www.paradisepointwi.com

715-367-6690
2147W Leisure Lane
Mercer, WI 54547

Rugger's Landing

715-476-2530
5643 US-51
Mercer, WI 54547
Pike Lake, 3 cabins
ATV/Snowmobile trail access

The Lodge at Manitowish Waters

lodgemw.com

715-543-2024
13859 Ilg Rd.
Manitowish Waters, WI
24 rooms
Snowmobile trail access



Dining

Bank Club Bar & Grill

715-561-2544

Address: 220 Silver St., Hurley, WI

Located close to ATV/Snowmobile route.

Burgers Bar & Grill

715-561-2767

Address: 7 Nimikon St., Gile, WI

Multicuisine. Boasts the juiciest burgers in town.

Serves lunch, dinner & drinks.

Located on ATV/Snowmobile route.



Iron Horse Saloon

715-561-3196

Address: 322 Silver St., Hurley, WI

Located close to ATV/Snowmobile route.



Iron Nugget

<https://www.ironnugget.com/>

715-561-9800

Address: 404 Silver St., Hurley, WI

Family-run bar & restaurant offering hearty American dishes & pizza in a warm atmosphere.

Located close to ATV/Snowmobile route.



Joany's Sidekicks

715-561-5515

Address: 7833 Hwy. 77, Iron Belt, WI

(7.7 mi. west of Hurley on Hwy. 77)

Great food. Serving breakfast, lunch, dinner.

Located ATV/Snowmobile route.

Sharon's Coffee Company

715-561-5500

Address: 122 Silver St., Hurley, WI

Serving a full breakfast.

Lunch offers fresh salads, wraps, burgers, sandwiches, soups, fries, homemade bakery, coffee, latte, smoothies and more.

Located close to ATV/Snowmobile route.



The Bell

715-561-3753

Address: 10381N US-51, Hurley, WI

(7.3 mi. south of Hurley on US-51)

Italian restaurant, homemade pizza and pasta.

Snowmobile accessible.



Trailside Pub & Grill

Phone: 715-329-1400

Address: 414 Silver St., Hurley, WI

ATV/Snowmobile accessible.

Yukon Fifty-One

715-476-2204

Address: 7936 N US-51, Hurley, WI

Bar & dining.

Located on ATV/Snowmobile route.

Around the Corner Pub

aroundthecornerpub.com

715-476-2472

Address: 2633 Railroad St.

Mercer, WI

Offering refreshing cocktails and hearty pub food.



Beaver Lodge Bar & Resort

beaverlodgemercerwi.com

715-476-2004

Address: 2010 Beaver Lodge Circle

Mercer, WI

Beautiful establishment serving cocktails, food & lodging.



Beaver's Resort

beaversresort.org

715-476-3412

Address: 4720 W Lake of the Falls Rd.,

Mercer, WI

Cranberry Inn

cranberryinnofmercer.com

715-476-3451

Address: 5491 US-51, Mercer, WI

Multi-cuisine. Restaurant, bar & lodging.



Dixie's Coffee House

dixiesmw.com

715-543-2353

Address: 6085 County Hwy. W
Manitowish Waters, WI

Features their own New Roots coffee, Rishi tea, specialty baked goods, panini & delicious soup.



Donners Bay Resort

715-476-2555

Address: 2974 Hiawatha Rd.
Butternut, WI

Resort with a full bar, food & pizza.

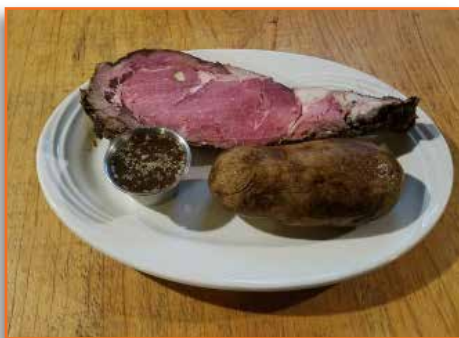
Gateway Lodge

thegatewaylodge.com

715-476-7878

Address: 4695 N Popko Circle W
Mercer, WI

Full bar & restaurant.



Home Slice Pizza

homeslicemercer.com

715-476-0234

Address: 2040 W Saarnio Rd.
Mercer, WI

Offering pizzas, subs, salads, wings & sides.



Johnny's Bar & Grill

715-690-6047

Address: 5225 US-51 N, Mercer, WI
Offering a full service bar & menu including soups & sandwiches, gyros, fish tacos, and Friday Fish fry.

Lazy Ace Saloon

lazyacesaloon.com

715-476-2257

Address: 1704 Manitowish Rd.
Mercer, WI

A true smokehouse BBQ bar offering wonderful smoked sandwiches and homemade pizza.



Rugger's Landing Bar & Restaurant

715-476-2530

Address: 5643 US-51, Mercer, WI
Wed. (All you can eat Pizza), Friday (Fish Fry & Combo Night), Saturday (Prime rib & prawns).

Smokey's

smokeysdining.com

715-543-2220

Address: 6410 County Hwy. W
Manitowish Waters, WI
One of the nicest supper clubs in the Northwoods, offering steaks, chops, seafood & house specialties with a superb wine list.



Sunken Horse Saloon

deadhorselodge.com

715-544-5851, 715-776-0676

Address: 4125 N Popko Circle W
Mercer, WI

Offering Appetizers, burgers, soups & sandwiches, homemade pizza.

The Pines Restaurant & Beer Garden

thepinesmerc.com

715-476-2933

Address: 5234 US-51, Mercer, WI
Specializing in homemade German dinners & desserts. Also offering pizza, salads & sandwiches.



Tom's Country Cafe

715-476-2433

Address: 5233 US-51, Mercer, WI
Home cooking. Serving breakfast, lunch & dinner seven days a week.



Wolf's Den Bar & Grill

greatnorthernmerc.com

715-476-2441

Address: 5070 US-51, Mercer, WI
Offering the best burger and sandwich menu in the area. Nightly dinner specials include Friday Fish Fry and Saturday Prime Rib.



Iron County holds a variety of fun and unique events, many of which are held annually. A full calendar of events can be accessed at the Chamber links below, as well as any other information you may be looking for.

Due to COVID-19, many events may be postponed, cancelled or adjusted. Check with the Chambers for updates.

**Hurley Chamber
of Commerce**

316 Silver St.
Hurley, WI 54534
715-208-0902

www.hurleywi.com



**Mercer Area Chamber
of Commerce**

5150 N Hwy. 51
Mercer, WI 54547
715-476-2389

www.mercercc.com



Annual Events

Memorial Weekend ATV/UTV Rally & Parade
Hurley, WI

Iron County Farmers Market
June-mid Oct.
Wed. & Sat.
Hurley, WI

Lupine Junefest & Bird Festival
2nd Saturday in June
Mercer, WI

Mercer Open (Can Yak)
last weekend in June
Mercer, WI

4th of July Fireworks
Mercer, WI

Iron County Heritage Days
last Sat. in July-2nd Sun. in Aug.
Throughout Iron County

Loon Day
1st Wed. in August
Mercer, WI

Iron County Fair
1st weekend in Aug.
Saxon, WI

Paavo Nurmi Marathon
2nd Saturday in Aug.
Hurley, WI

Festival Italiano
1st Saturday in Sept.
Hurley, WI

Fall Color Classic Bike Tour
3rd weekend in Sept.
Mercer, WI

Pumpkin Run ATV/UTV Rally
2nd weekend in Oct.
Mercer, WI

For these and additional events in the surrounding area you may visit:

**Iron County
Development Zone**

100 Cary Road
Hurley, WI 54550
715-561-2922

www.ironcountywi.com

www.felivelife.org



**Iron County
Development Zone**
100 Cary Road
Hurley, WI 54550
715-561-2922
www.ironcountywi.com

**Hurley Chamber
of Commerce**
316 Silver St.
Hurley, WI 54534
715-208-0902
www.hurleywi.com

**Mercer Area Chamber
of Commerce**
5150 N Hwy. 51
Mercer, WI 54547
715-476-2389
www.mercercc.com