

**DUAL MAGNIFIER, 3X / 6X**

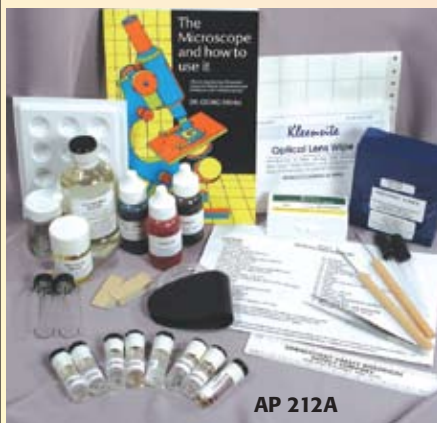
Hand held, made from durable plastic. Measures approximately 2" diameter. Dual lens. Useful for all grade levels.

- AP 41 Each ..... \$2.25
- Set of 12 ..... \$21.00
- Set of 25 ..... \$35.00

**SLIDE MAKING KIT**

Learn to make permanent slides. Kit comes supplied with all the equipment and specimens necessary to make 150-200 prepared slides for microscope study. **Required but not supplied: 120 ml isopropyl alcohol (99%).** Includes instructions and 30 blank slides.

- AP 210A Each ..... \$32.00



**ADVANCED SLIDE MAKING KIT**

This kit covers all the basics of slide making along with the more involved process of staining specimens. All stains and necessary chemicals, specimens, mounting medium, 72 blank slides, coverslips, labels, droppers, magnifiers, concave slide, vials, forceps, spot plate, ruler, gloves, prepared slides and text on microscope use plus instruction booklet are included. **Required but not supplied: 500 ml isopropyl alcohol (99%).**

- AP 212A Each ..... \$92.00



**MICROSCOPE GLASS SLIDES**

Student quality, size 75 mm x 25 mm (3" x 1"), thickness 1.2mm.

- AP 100 Box of 72 slides ... \$7.95
- 2 or more boxes, per box ... \$7.50

**MICROSCOPE GLASS SLIDES**

Pre-cleaned, selected quality, 75 mm x 25mm (3"x 1"), thickness 1.2 mm.

- AP 102 Box of 72 slides .. \$11.95
- 2 or more boxes, per box .. \$10.95

**FROSTED MICROSCOPE SLIDES**

Same quality as AP 100 with a frosted end for easy labeling. Glass.

- AP 105 Box of 72 slides ... \$9.50
- 2 or more boxes, per box ... \$9.00

**MICROSCOPE CAVITY SLIDES**

Concave, 1.5 mm thick. Concavity 18 mm x 0.8 mm deep. Glass.

- AP 110 Package of 12.... \$10.95
- 6+ packages, each.... \$10.00

**PLASTIC MICROSCOPE SLIDES**

Made from optically clear vinyl. Ideal for wet mounts. Size 3 x 1 inches, thickness .0180-.022 mm.

- 144 per package.
- AP 115 Package of 144 .. \$13.95
- 6+ packages, each ... \$12.95



**SLIDE BOX**

Capacity 25, 3" x 1" slides. High impact, unbreakable plastic.

- AP 505 Each ..... \$2.95
- 12 or more, each ..... \$2.25



**COVER SLIPS (Plastic) Size 22 mm**

- AP 200A Package of 100.... \$4.95
- AP 200B Package of 1000 . \$36.00

**COVER SLIPS (Glass)**

- #1 thickness, size 22 mm, 100/box.
- AP 140 Per box of 156 .... \$7.95
- 10+ boxes, per box ..... \$7.50

**COVER SLIPS (Glass)**

- #2 thickness, size 22 mm, 100/box.
- AP 150 Per box of 116 .... \$7.95
- 10+ boxes, per box ..... \$7.50

**LENS PAPER**

Each booklet has 50 sheets 4 x 6 inches.

- AP 250 Each booklet..... \$1.95
- Per 12 ..... \$15.00

**BIBULOUS PAPER**

Also know as blotting paper, each booklet contains 50 sheets 4 x 6 inches.

- AP 255 Each booklet..... \$3.75
- Per 12 ..... \$30.00



**SLIDE BOX**

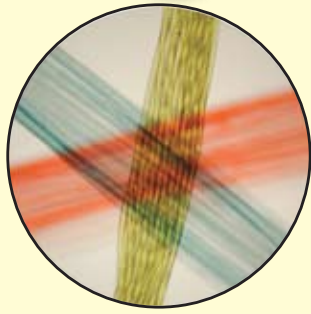
Plastic. Holds 100, 3" x 1" slides. This box is made of gray high-impact polystyrene. The bottom is lined with cork pads and a printed index lines the cover. The cover has steel hinge pins and a nickel plated catch.

- AP 530 Each ..... \$9.50
- 12 or more, each ..... \$8.50



**Microscopes are listed on pages 93-102.**

**Prepared slides are listed on the next page.** ➡



## GENERAL SCIENCE

Set of 12 slides. Includes: nylon & wool fibers; salt crystals; cosmetics; letter "e"; quartz sand; starch grains; toothpaste; stagnant water; iron rust; dust; human hair; & sawdust.  
SS-10001 Per set . . . \$61.25

## BASIC CELL TYPES

Set of 6 slides. Set illustrates the structure of the following important types: Basic Plant Cell-Onion bulb scale epidermis, flat mount; Basic Animal Cell-Frog skin, flat mount; Female Sex Cell-Ovary, section with Graafian follicle showing egg; Male Sex Cell-Sperm smear demonstrating flagella; Motor Neurons-Giant multipolar nerve cells; Fusiform Cell-Slender, tapered, cardiac muscle cells, teased.  
SS-10006 Per set . . . \$42.95

## CELLULAR ORGANELLES AND INCLUSION

Set of 5 slides. Includes: mitochondria, golgi apparatus, nissl bodies (rough endoplasmic reticulum), pigment, glycogen.  
SS-10215 Per set . . . \$52.95

## ONION MITOSIS

Set of 3 slides that include: Root Tip; Root Tip (Polar View); Root Tip, Squash preparation showing a single layer of cells.  
SS-10071 Per set . . . \$23.95

## MITOSIS

Set of 3 slides. Includes ascaris, early cleavage; whitefish blastodisc; and onion root tip.  
SS-10070 Per set . . . \$44.95

## MITOSIS & MEIOSIS

Set of 4 slides. Set includes the following:

- Mitosis in whitefish blastodisc
- Mitosis in onion root tip
- Spermatogenesis in grasshopper testis
- Oogenesis in ascaris uterus

SS-10075 Per set . . . \$50.95

## CHROMOSOMES

Set of 6 slides containing: Ascaris, Sec., Mitosis; Drosophila Giant Chromosomes, Squash; Spermatogenesis (Grasshopper Testis); Onion Root Tip, Mitosis; Onion Root Tip, Squash, Mitosis; Whitefish Blastodisc, Sec., Mitosis.  
SS-10060 Per set . . . \$93.95

## PLANT & ANIMAL CELLS #1

Set of 4 slides. Mounted whole for an in-depth view and sectioned for added clarity. Includes:

- Elodea leaf, w.m. Demonstrates cell wall, chloroplasts, nucleus and nucleolus.
- Leaf, c.s. Shows cell wall, large vacuole, cytoplasm, chloroplasts, nucleus, nucleolus and chromatin.
- Starfish egg, w.m. Ovum at germinal vesicle stage shows cell membrane, nucleus & nucleolus.
- Amphiuma liver, sec. demonstrates cell membrane, cytoplasm, nucleus, nucleolus and chromatin.

SS-10004 Per set . . . \$24.95

## PLANT & ANIMAL CELLS #2

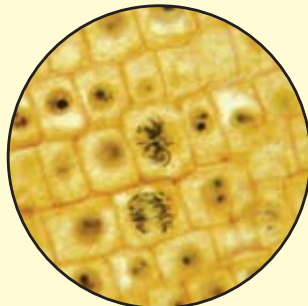
Set of two slides that include:

- Plant cell- section of stem or leaf, demonstrating cell wall nucleus, nucleolus, large vacuole and chloroplasts.
- Animal cell - section of Amphiuma liver, demonstrating cell membrane, nucleus, nucleolus and chromatin.

SS-10005 Per set . . . \$12.95

## ANIMAL, VEGETABLE & MINERAL

Set of 25 slides. Includes: starfish eggs; hair - human, cat and sheep; paramecium; hydra; planaria; antennae; housefly head; spider; flea; bacteria (3 shapes); bread mold; mushroom; elodea leaf; mixed green algae; root hairs; onion root tip; tilia; lilac leaf; letter "e"; crossed threads; cosmetics; quartz sand; rust; salt crystals; and volcanic ash.  
SS-10002 Per set . . . \$148.95

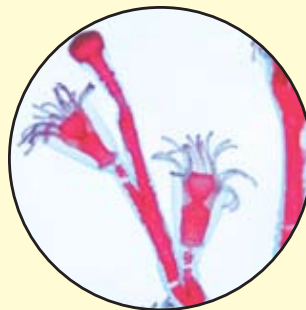
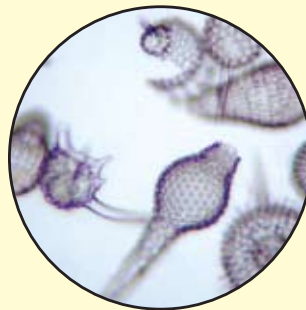


## GENERAL BIOLOGY

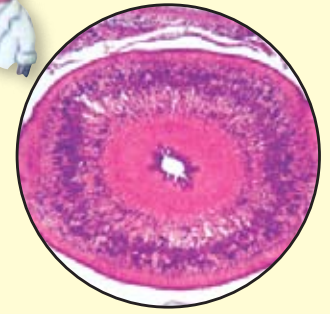
Set of 25 slides. Set provides balanced representation of major plant and animal groups. Set includes the following: Mixed Protozoa; Sponge Spicules; Hydra, Plain; Tape worm, Scolex and Immature segments; Trichinella in Muscle; Earthworm, Posterior; Zooplankton; Drosophila, male and female; Mites; Frog Skin; Frog Blood, smear; Human Blood, smear; Squamous Epithelium, smear; Fish Scales; Feathers, 3 types; Bacteria, 3 shapes, negative stain; Rhizopus; Mixed Green Algae; Sphagnum Leaf; Mixed Pollen; Monocot and Dicot Stems; Monocot and Dicot Leaf; Mitosis in Onion Root Tip; Onion Epidermis.  
SS-10020 Per set . . . \$189.95

## BASIC BIOLOGY

Set of 15 slides. Set provides the beginner with an introduction to biological studies. Set includes: Mixed Protozoa, Sponge Spicules, Planaria, Hydra, Zooplankton, Trichinella, Spider, Frog Blood, Mixed Green Algae, Bread Mold, Sphagnum Leaf, Mixed Pollen, Onion Bulb Epidermis, Grass Root Tip, Spirea Flower.  
SS-10010 Per set . . . \$96.95



**Free slide container included with slide sets.**



## BASIC ZOOLOGY

Set of 15 slides. Set introduces the beginner to the diversity of zoological studies by providing a close look at wholemounts of 15 fascinating species and structures. Mixed Protozoa; Leech; Clam; Zooplankton; Mites; Spiders; Fruit Fly; Tapeworm; Scolex and Immature Segments; Starfish; Frog Blood, smear; Feathers, 3 types; Fish Scales, 4 types; Hair, human, cat and sheep.  
SS-10130 Per set . . . \$118.95

## GENERAL ZOOLOGY

Set of 22 slides. Set provides a broad view of morphology and tissue structure in representatives from all the major phyla. Set includes: Amoeba; Paramecium; Grantia; Hydra, budding; Planaria, injected; Trichinella in Muscle; Ascaris, male and female, through region of sex organs; Earthworm, posterior; Zooplankton; Drosophila, male and female; Mitosis in Whitefish Egg; Frog Skin; Human Skin; Human Blood, smear; Adipose Tissue, mammal; Frog Intestine; Liver, mammal; Ovary, mammal; Testis, mammal; Kidney, mammal; Artery, Vein and Capillary, mammal; Lung, mammal.  
SS-10140 Per set . . . \$168.95

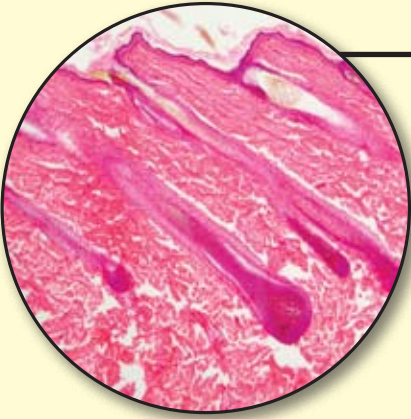
## PROTOZOAN COLLECTION

Set of 12 slides. Includes: amoeba, foraminifera, trypanosoma, euglena, termite flagellates, plasmodium, monocystis, gregarina, didinium engulfing paramecium, vorticella, euplotes, & mixed protozoa.  
SS-10170 Per set . . . \$114.95

## POND MICROECOLOGY

Set of 25 slides that include: bacteria, 3 type (negative stain); amoeba; paramecium; euglena; vorticella; spongilla gemmules; hydra; planaria; bryozoan; leech; rotifers; daphnia; ostracods; cyclops; gammarus; mosquito larva; clam glochidia; fish fry (newly hatched); mixed blue-green algae; mixed green algae; yellow-green algae; red algae; mixed diatoms; volvox, elodea leaf.  
SS-10055 Per set . . . \$148.95





**BASIC HISTOLOGY**

Set of 25 slides. Set provides good representation of many tissue types and organ systems. Set includes: Adipose Tissue; Hyaline Cartilage; Elastic Cartilage, stained for elastic fibers; (2) Bone, decalcified; Frog Blood, smear; Human Blood, smear; Smooth Muscle; Striated Muscle; Cardiac Muscle; Cerebrum, silver stain; Cerebellum; Spinal Cord; Nerve; Artery, Vein and Nerve; Palatine Tonsil; Scalp, with hair; Lung; Taste Buds, in folliate papillae; Fundic Stomach; Jejunum; Colon; Liver (Pig); Kidney, near-median; Ovary. SS-10225 Per set . . . \$169.95

**HUMAN PHYSIOLOGY SET**

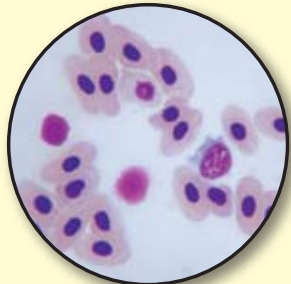
Includes 25 slides: skin, thick; skin caucasian and negroid; epithelium (3 types); adipose tissue; bone, ground; blood smear; artery; spleen; muscle, 3 types; submaxillary gland; stomach, fundic section; duodenum; appendix, normal; liver; pancreas; cerebrum and cerebellum; spinal cord, 4 regions; Meissner's corpuscle; kidney; ovary; sperm smear; trachea; lung; adrenal gland; thyroid. SS-10270 Per set . . . \$224.95

**PARASITES OF MAN**

Set of 7 slides. This set includes: plasmodium vivax; schistosoma mansoni; echinococcus adult; trichinella in muscle; pediculus humanis; cimex (bed bug); and pulex irritans. SS-10190 Per set . . . \$78.95

**CONNECTIVE TISSUE TYPES (CONCISE SET)**

Set of 6 slides. Set contains the following: Areolar Tissue, spread; Adipose Tissue; Tendon (White Fibrous); Cartilage, Elastic; Cartilage, Hyaline; Bone, Ground. SS-10230 Per set . . . \$55.95



**MUSCLE TYPES**

Set of 7 slides. Set includes the following: Smooth Muscle; Striated Muscle; Striated Muscle, stained for details of striations; Striated Muscle, teased; Cardiac Muscle; Cardiac Muscle, stained for intercalated discs; Cardiac Muscle, teased. SS-10235 Per set . . . \$44.95

**NERVE TISSUE TYPES**

Set of 12 slides includes: peripheral nerve, cerebrum, cerebellum, medulla, spinal cord, spinal ganglion, pacinian corpuscle, sympathetic gagliaon, meissner's corpuscle, taste buds, motor nerve ending, multipolar neurons. SS-10255 Each . . . \$122.95

**EPITHELIUM TYPES (CONCISE SET)**

Set of 5 slides containing: Simple Cuboidal, Simple Columnar, Pseudostratified Ciliated Columnar, Stratified Squamous, Transitional. SS-10240 Per set . . . \$29.95

**BLOOD TYPES**

Set of 6 slides. Set provides blood smears from 5 classes of vertebrates: Fish; Amphibian; Reptile; Bird; Mammal; Human, for comparison. SS-10265 Per set . . . \$36.95

**SPERM TYPES**

Set of 7 slides. Set compares the structure of sperm from representatives of two invertebrate and three vertebrate classes; Starfish, Frog, Bird, Ox, Guinea Pig, Rat, Human. SS-10268 Per set . . . \$43.95

**FORENSICS SLIDE SET**

Introductory forensics set of 20 slides. Some slides are stained, some are in natural state. Includes: bloodstained cloth; chalk (disintegrated shells of foraminifera); cosmetics; human hair; 5 types of animal hair (bat, cat, horse, rabbit, sheep); quartz sand (beach sand); textile fibers (linen, silk, wool, cotton); textile fibers (synthetic, Dacron, rayon, nylon); Pediculus humanus (human louse); blood smear, bird; cheek cells; blood smears, human and frog; blood smear, cat; sperm smear, rat; sperm smear human; bacteria, 3 shapes; bacillus anthracis (causes Anthrax); green algae, freshwater; Diatoms, freshwater; and pollen types. SS-10003 Per set . . . \$119.95



**BASIC BOTANY**

Set of 15 slides. Set introduces the diversity of botanical studies by providing a close look at some familiar plants. Includes: bacteria, 3 types; yeast; mushroom; mixed green algae; liverwort, gemmae wide mount; liverwort gemmae, long section; moss leaf; fern spores germinating; pine leaf (2 needle); onion bulb epidermis; corn stem; coleus stem; spirea flower; pollen; cucumber. SS-10340 Per set . . . \$84.95

**MONOCOT & DICOT COMPARISON SLIDES**

Set of 4 slides. This set features two cross-sections (one monocot & dicot) on each slide for comparison: monocot and dicot roots; monocot and dicot stems; monocot and dicot leaves; monocot and dicot flowers. SS-10660 Per set . . . \$32.95

**MONOCOT STRUCTURES**

Set of 6 slides. Includes: root, root tip mitosis, stem, leaf, flower bud, and seed. SS-10630 Per set . . . \$36.95

**DICOT STRUCTURES**

Set of 6 slides. Includes: root, root tip mitosis, stem, leaf, flower bud, and seed. SS-10640 Per set . . . \$42.95

**BASIC MICROBIOLOGY**

Set of 8 slides providing an introduction to the study of microorganisms. Includes: Mouth Smear; Bacteria, 3 Shapes, negative stain; Mixed Protozoa; Molds, 3 Types; Yeast; Mixed Green Algae; Mixed Blue-Green Algae; Slime Mold, Sporangia. SS-10080 Per set . . . \$56.95

**BACTERIA MORPHOLOGY**

Set of 7 slides demonstrates basic bacterial shapes and arrangements through the use of both positive and negative staining. Includes these slides: bacteria, three shapes; typical coccus; typical streptococcus; typical staphylococcus; typical bacillus; typical streptobacillus; and typical spirillum. SS-10420 Per set . . . \$39.95

**ANIMAL HAIR TYPES**

Set of 25 slides. Includes: domestic animals - cat, dog, rabbit, ferret, rat, horse, sheep, goat, alpaca; N. American mammals - red fox, grey fox, otter, mink, fisher, opossum, deer, skunk, raccoon, squirrel, bobcat, bat; and exotic animals - carcal, musk ox, tri-colored squirrel, swamp monkey. SS-10008 Per set . . . \$118.95

**GENERAL BACTERIOLOGY**

Set of 21 slides includes: 3 bacterial shapes, acetobacter aceti, aeobacter aerigenes, bacillus anthracis bacillus subtilis, bacillus subtilis spores, bordetella pertussis, clostridium botulinum, clostridium tetani, corynebacterium diphtheriae, diplococcus pneumoniae, escherichia coli, klebsiella pneumoniae, mycobacterium tuberculosis, proteus hauseri, rhizobium leguminosarum, rhodospirillum rubrum, salmonella typhosa, shigella dysenteriae, staphylococcus aureus, streptococcus pyogenes. SS-10465 Per set . . . \$123.95

**BACTERIA PATHOGENIC IN MAN**

This set of 9 slides includes: streptococcus pyogenes, clostridium tetani, clostridium botulinum, proteus hauseri, klebsiella pneumoniae, mycobacterium tuberculosis, pseudomonas aeruginosa, salmonella typhosa, and shigella dysenteriae. SS-10460 Each . . . \$57.95

**FRESHWATER ALGAE**

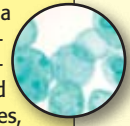
Set of 8 slides. This set includes: oedogonium, spirogyra, hydro-dictyon, mixed desmids, mixed diatoms, gloeocapsa, nostoc, batrachoperium. SS-10580 Per set . . . \$47.95

**MARINE ALGAE**

Set of 9 slides. Includes: acetabulria, mixed diatoms, ectocarpus, fucus, laminaria, pediastrum, penicillium, polysiphonia, and ulva. SS-10570 Per set . . . \$45.95

**ALGAE TYPES**

Set of 11 slides providing a selection of marine and freshwater plants representing several taxonomic divisions and demonstrate a variety of shapes, sizes, and structures in unicellular, multi-cellular and colonial algae. Set includes: Chlamydomonas, Volvox, Euglena, Spirogyra, Mixed Desmids, Diatoms, Fucus, Nostoc, Oscillatoria, Polysiphonia, Ceramium. SS-10560 Per set . . . \$60.95



PREPARED SLIDES



These slide sets include five different slides pertaining to a particular subject. Includes a Neo/Guide reference booklet featuring background information and structure identification key. Also includes protective plastic slide case.

**MICROSCOPY:****EXPLORING COMMON THINGS**

Set of five microscope slides - includes: Feather, three types; Housefly Head, Leg and Wing; Textile Fibers; Hair, three types; and the letter "e".

AZ70-4003 Per set . . . . \$19.95

**EXPLORING CELLS**

Set of five microscope slides - includes: Bacteria (Prokaryotic Cell); Cheek Cell (Eukaryotic Cell); Cyanobacteria (Photosynthetic Bacteria); Mixed Protozoa; and Lilac Leaf (Plant Cell).

AZ70-4004 Per set . . . . \$19.95

**FIVE KINGDOMS:****EXPLORING MICROLIFE**

Set of five slides - includes: Bacteria; Bread Mold; Yeast; Planktonic Forms; and Mixed Protozoa.

AZ70-4005 Per set . . . . \$19.95

**EXPLORING FUNGI**

Set of five slides - includes: Aspergillus; Molds - Three Types; Mushroom; Bread Mold - Sporangia & Zygotes; and Budding Yeast.

AZ70-4011 Per set . . . . \$19.95

**EXPLORING PROTISTS**

Set of five slides - includes: Paramecium; Amoeba; Spirogyra; Mixed Protists; and Euglena.

AZ70-4007 Per set . . . . \$19.95

**EXPLORING PLANTS**

Set of five slides comes complete with Neo/Guide reference booklet featuring detailed background information and structure identification key. This set includes these five slides: Onion Mitosis; Plant Root; Plant Stem; Plant Leaf; and Plant Flower Bud.

AZ70-4008 Per set . . . . \$19.95

**ANIMALS: EXPLORING INVERTEBRATES**

Set of five microscope slides - includes: Daphnia; Planaria; Hydra; Plankton; and Rotifers.

AZ70-4009 Per set . . . . \$19.95

**HUMAN BIOLOGY: EXPLORING DISEASE-CAUSING ORGANISMS**

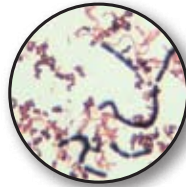
Set of five microscope slides - includes: Trichinella (Trichinosis); Plasmodium (Malaria); Pneumocystis (AIDS-Opportunistic Infection); Mycobacterium (Tuberculosis); and Entamoeba (Amoebic Dysentery).

AZ70-4010 Per set . . . . \$32.95

**BACTERIA STRUCTURE**

Study the three shapes of bacteria - all on one prepared microscope slide. Three separate smears allow for any easy and economical comparison of cocci, bacilli and spirilla.

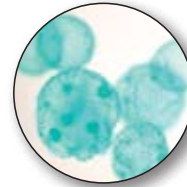
AZ70-4006 Per slide . . . \$16.95

**INDIVIDUAL PREPARED SLIDES**

KB 34  
Gram Stain



KP 130  
Allium



KF 465  
Volvox

**Discounted price for 10 or more same slide**

**BACTERIA**

**FUSHIN STAIN** - 3 separate bacteria: Bacillus, Coccus, Spirillum.

KB 25 Each . . \$7.95 10+ . . \$7.75

**GRAM STAIN** - 3 separate bacteria smears: Bacillus, Coccus, Spirillum.

KB 27 Each . . \$9.95 10+ . . \$9.75

**NEGATIVE STAIN** - 3 bacteria shapes mixed: Bacillus, Coccus, Spirillum. (Nigrosin - excellent for scopes without an oil immersion lens).

KB 30 Each . . \$6.95 10+ . . \$6.75

**GRAM STAIN** - 3 bacteria shapes mixed: Bacillus, Coccus, Spirillum.

KB 34 Each . . \$7.95 10+ . . \$7.75

**BACILLUS** - negative stain.

KB 36 Each . . \$5.95 10+ . . \$5.75

**BACILLUS** - fuchsin stain.

KB 38 Each . . \$5.95 10+ . . \$5.75

**COCCUS** - negative stain.

KB 46 Each . . \$5.95 10+ . . \$5.75

**COCCUS** - fuchsin stain.

KB 48 Each . . \$5.95 10+ . . \$5.75

**SPIRILLUM** - negative stain.

KB 56 Each . . \$5.95 10+ . . \$5.75

**SPIRILLUM** - fuchsin stain.

KB 58 Each . . \$5.95 10+ . . \$5.75

**ALGAE**

**BLUE-GREEN ALGAE**, w.m. mixed species.

KF 5 Each . . \$6.95 10+ . . \$6.75

**ANABAENA**, w.m. Trichomes of beadlike or barrel shaped cells with intercalary heterocysts.

KF 15 Each . . \$5.95 10+ . . \$5.75

**NOSTOC**, w.m. Contorted bead-like filaments with intercalary heterocysts in a firm gelatinous colony.

KF 80 Each . . \$5.95 10+ . . \$5.75

**OSCILLATORIA**, w.m. Unbranched, multicellular trichomes without sheaths.

KF 85 Each . . \$5.95 10+ . . \$5.75

**GREEN ALGAE**, mixed species w.m.

KF 130 Each . . \$6.95 10+ . . \$6.75

**SPIROGYRA**, vegetative, w.m., multiple spiral chloroplasts.

KF 401 Each . . \$5.95 10+ . . \$5.75

**VOLVOX**, w.m. of colonies, showing vegetative and sexual stages.

KF 465 Each . . \$7.95 10+ . . \$7.75

**DIATOMS, MIXED SPECIES**

**FRESHWATER**, w.m. Unstained frustules (protoplasts dissolved).

KF 565 Each . . \$5.95 10+ . . \$5.75

**FRESHWATER**, w.m. Stained protoplasts.

KF 570 Each . . \$5.95 10+ . . \$5.75

**FUNGI**

**MOLDS**, 3 types, w.m.

*Aspergillus*, *Rhizopus* and *Penicillium*.

KD 5 Each . . \$11.95 10+ . . \$11.75

**FLAGELLATES**

**EUGLENA GRACILIS**, w.m.

Demonstrates nucleus, chloroplasts and contractile vacuole. Shows flagellum.

KF 515 Each . . \$5.25 10+ . . \$5.00

**ROOTS**

**MONOCOT (Zea) & DICOT (Ranunculus) ROOTS**, c.s.

KP 1 Each . . \$8.95 10+ . . \$8.75

**ALLIUM** (Onion) root tip, c.s., for polar view of mitosis.

KP 120 Each . . \$5.95 10+ . . \$5.75

**ALLIUM** (Onion) root tip, l.s. Iron hematoxylin stain. All stages of mitosis present and vividly stained deep black. Our best stain in mitosis.

KP 130 Each . . \$8.95 10+ . . \$8.75

**LEAVES**

**MONOCOT (Zea) & DICOT (Syringa) LEAVES**, c.s.

KS 1 Each . . \$8.95 10+ . . \$8.75

**ELODEA LEAF**, w.m.

This slide shows cell walls, nucleus and chloroplasts of this simple, veinless hydrophyte.

KS 225 Each . . \$6.95 10+ . . \$6.75

**STEMS**

**MONOCOT (Zea) & DICOT (Helianthus) STEMS**, c.s.

KR 1 Each . . \$8.95 10+ . . \$8.75

**FLOWERS**

**FLOWER OVARIES**, 4 types, c.s.

KT 1 Each . . \$8.95 10+ . . \$8.75

**POLLEN, MIXED TYPES**, w.m.

KT 4 Each . . \$6.95 10+ . . \$6.75





## GENERAL SCIENCE

**CORK**, sec. demonstrates cell wall "skeleton" remaining after plant cells have died.

JA 12 Each . . \$5.95 10+ . . \$5.75

**HAIR** - Human, cat & sheep, w.m.

JA 54 Each . . \$5.95 10+ . . \$5.75

**LETTER "e"**, w.m. Introduce students to the microscope by demonstrating reversal of image.

JA 66 Each . . \$5.50 10+ . . \$5.25

**THREADS, CROSSED**, Yellow on blue on red. Aids in learning to focus the microscope.

JA 132 Each . . \$5.95 10+ . . \$5.75

**MIXED PROTOZOA**, w.m.

*Amoeba*, *Paramecium*, *Euglena* and several other species well represented.

JB 6 Each . . \$9.95 10+ . . \$9.75

TRYPANOSOMA  
GAMBIENSE

Blood smear, causes West African sleeping sickness in humans.

JB 140 Each . . \$12.50 10+ . . \$12.25

**AMOEBA PROTEUS**, w.m.

Numerous specimens with well extended pseudopodia.

JB 180 Each . . \$7.50 10+ . . \$7.25

**FORAMINIFERA**, w.m.

JB 270 Each . . \$6.50 10+ . . \$6.25

**PELOMYXA CAROLINENSIS** (Chaos)

A very large, multinucleated amoeba

JB 290 Each . . \$6.95 10+ . . \$6.75

**RADIOLARIA**, w.m.

Skeletons of this geologically important protozoan cover vast areas of the ocean floor.

JB 300 Each . . \$6.50 10+ . . \$6.25

## COELENTERATA

**HYDRA** (plain) w.m.

JD 100 Each . . \$6.95 10+ . . \$6.75

**HYDRA** (cross section)

JD 118 Each . . \$5.95 10+ . . \$5.75

**HYDRA** (long section)

JD 119 Each . . \$5.95 10+ . . \$5.75

**HYDRA** plain and budding, w.m.  
JD 140 Each . . \$9.95 10+ . . \$9.75

**HYDRA** Budding, extended specimen, stained for general structure.  
JD 150 Each . . \$7.95 10+ . . \$7.75

**OBELIA - HYDROID COLONY**

Polyps in vegetative and reproductive stages.  
JD 405 Each . . \$6.95 10+ . . \$6.75

## PLATYHELMINTHES

**PLANARIA**, Expanded and flattened to show general structure, w.m.

JE 100 Each . . \$6.95 10+ . . \$6.75

**PLANARIA**, plain & injected, w.m.

JE 110 Each . . \$9.95 10+ . . \$9.75

**PLANARIA**, c.s. of anterior, middle and posterior.

JE 115 Each . . \$8.95 10+ . . \$8.75

**FASCIOLA HEPATICA**

(Sheep Liver Fluke), stained for general structure.

JE 300 Each . . \$12.75 10+ . . \$12.50

**DIPYLIDIUM CANINUM**

Composite slide. Includes w.m. of scolex, immature, mature and gravid proglottids.

JE 675 Each . . \$27.95 10+ . . \$27.75

## CILIATA

**BURSARIA TRUNCATELLA**

One of the largest ciliates and a voracious consumer of *Paramecium*.

JB 565 Each . . \$7.50 10+ . . \$7.25

**EUPLOTES**

Ovoid form with cirri and band-like nucleus.

JB 600 Each . . \$5.95 10+ . . \$5.75

**PARAMECIUM CAUDATUM**, w.m.

Numerous specimens show typical morphology and large macronucleus. Different individuals variously demonstrate the single micronucleus, vacuoles, oral groove, gullet, or cilia.

JB 680 Each . . \$5.95 10+ . . \$5.75

**PARAMECIUM MULTIMICRONUCLEATUM**

Slightly larger than *P. caudatum* with four or more very small micronuclei.

JB 720 Each . . \$4.95 10+ . . \$4.75

**SPIROSTOMUM**

Large, elongate form with developed myonemes for contraction.

JB 740 Each . . \$5.95 10+ . . \$5.75

**STENTOR**

Highly contractive form, trumpet shaped when fully extended; nucleus resembles a string of beads.

JB 760 Each . . \$7.50 10+ . . \$7.25

**VORTICELLA**, w.m.

Bell-shaped body with band-like nucleus, attached to a stalk which may be extended or coiled like a spring.

JB 800 Each . . \$7.50 10+ . . \$7.25

## PORIFERA

**GRANTIA**, w.m. small specimen.

JC 18 Each . . \$5.95 10+ . . \$5.75

**GRANTIA**, c.s. Shows collar cells.

JC 19 Each . . \$5.50 10+ . . \$5.25

**GRANTIA**, c.s. & l.s.

The sycon canal system is clearly shown.

JC 20 Each . . \$8.50 10+ . . \$8.25

**SPONGE SPICULES**, w.m., mixed.

JC 300 Each . . \$4.95 10+ . . \$4.75

## ROTIFERA

**ROTIFERS** Extended specimens.

JF 6 Each . . \$5.50 10+ . . \$5.25

## ANNELIDA

**LUMBRICUS TERRESTRIS**

(earthworm) posterior, c.s. Demonstrates general earthworm morphology.

JJ 110 Each . . \$5.50 10+ . . \$5.25

**LEECH**

JJ 320 Each . . \$7.50 10+ . . \$7.25

## MOLLUSCA

**GLOCHIDIA**

JK 65 Each . . \$4.95 10+ . . \$4.75

## ARTHROPODA

**ZOOPLANKTON**, w.m. Consists mainly of several kinds of freshwater crustacea.

JM 20 Each . . \$7.50 10+ . . \$7.00

**ARTEMIA** (Brine Shrimp) Larvae.

JM 31 Each . . \$7.50 10+ . . \$7.25

**DAPHNIA** (Water Flea), w.m.

JM 40 Each . . \$6.75 10+ . . \$6.50

**ANTENNAE, 5 TYPES**, w.m. Includes plumose, geniculate, clubbed, filiform and aristate types.

JM 160 Each . . \$14.25 10+ . . \$14.00

**LEGS**, 3 types. w.m.

Includes cricket jumping leg, backswimmer leg and honeybee leg with pollen basket.

JM 170 Each . . \$8.95 10+ . . \$8.75

**WINGS**, 4 types

Includes butterfly wing piece with scales, cricket wing with file and scraper, squash bug wing (chitinous and membranous) and honeybee wing.

JM 220 Each . . \$10.95 10+ . . \$10.75

**TERMITE** (soldier)

JM 320 Each . . \$5.50 10+ . . \$5.25

**TERMITE** (worker)

JM 325 Each . . \$5.50 10+ . . \$5.25

**BUTTERFLY WING PIECE**

(with scales)

JM 705 Each . . \$4.95 10+ . . \$4.75

**DROSOPHILA** (Fruit fly) MALE

JM 890 Each . . \$5.50 10+ . . \$5.25

**DROSOPHILA** (Fruit fly) FEMALE

JM 895 Each . . \$5.50 10+ . . \$5.25

**DROSOPHILA** (Fruit fly) MALE & FEMALE

JM 900 Each . . \$7.95 10+ . . \$7.75

**CTENOCEPHALIDES**

(Dog or cat flea), w.m.

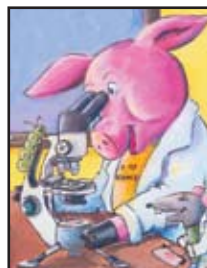
JM 1005 Each . . \$5.95 10+ . . \$5.75

**SPIDER**, w.m., Young specimen.

JM 3070 Each \$4.75 10+ . . \$4.50

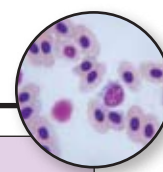
**TICK & MITE**, w.m.

JM 3100 Each \$7.25 10+ . . \$7.00



Free slide container  
included with slides.

Mores slides on the next page ➔



Discounted  
price for  
10 or more

### NEMATHELMINTHES

#### ASCARIS

Male and female, c.s. through reproductive organs.

JG 110 Each . \$12.95 10+ . \$12.75

#### TRICHINELLA SPIRALIS

(Pork-worm) encysted larvae in muscle, sec.

JG 570 Each . \$7.50 10+ . \$7.25

### OSTEICHTHYES

#### WHITEFISH MITOSIS

Section of blastodisc.

Provides an excellent demonstration of animal mitosis. Mitotic stages clearly depicted, numerous figures present.

JS 620 Each \$19.95 10+ . \$19.75

### AMPHIBIA

#### AMPHIUMA (congo eel) BLOOD SMEAR

JO 400 Each . \$5.95 10+ . \$5.75

#### AMPHIUMA (congo eel) LIVER

JO 425 Each . \$6.50 10+ . \$6.25

#### FROG BLOOD SMEAR

JO 510 Each . \$5.95 10+ . \$5.75

#### FROG SKIN (pigmented)

JO 610 Each . \$5.95 10+ . \$5.75

#### FROG SKIN

(stained for cell boundaries)

JO 615 Each . \$6.95 10+ . \$6.75

### REPTILIA

#### TURTLE BLOOD SMEAR

JO 800 Each . \$5.95 10+ . \$5.75

#### SNAKE BLOOD SMEAR

JO 875 Each . \$5.95 10+ . \$5.75

### AVES

#### BIRD BLOOD SMEAR

JO 900 Each . \$5.95 10+ . \$5.75

#### BIRD FEATHERS 3 types - down, filoplume and contour feathers.

JO 930 Each . \$9.95 10+ . \$9.75

**Free slide container included with slides.**

### HISTOLOGY NON-HUMAN

**EPITHELIUM**, non-human, 3 types, sec. Squamous, columnar, and cuboidal epithelium.

JP 140 Each . \$9.25 10+ . \$9.00

**ADIPOSE TISSUE**, nonhuman, sec.

JP 200 Each . \$5.95 10+ . \$5.75

**SALIVARY GLANDS**, 3 types, sec. Sections of the parotid, sublingual and submaxillary glands on the same slide. Non-human.

JP 515 Each . \$15.95 10+ . \$15.75

**THYROID GLAND**, sec.

JP 940 Each . \$5.95 10+ . \$5.75

**BONE**, non-human, ground, c.s. Sharp detail of the haversian system, lacunae and canaliculi.

JP 223 Each . \$12.95 10+ . \$12.75

**CARTILAGE**, non-human, elastic & hyaline, sec.

JP 232 Each . \$9.50 10+ . \$9.25

**BLOOD SMEAR**, Cat.

JP 300 Each . \$6.50 10+ . \$6.25

**BLOOD SMEAR**, Rabbit.

JP 301 Each . \$6.50 10+ . \$6.25

**ARTERY, VEIN & CAPILLARY**, c.s. non-human.

JP 325 Each . \$5.95 10+ . \$5.75

**MUSCLE**, Cardiac, non-human.

JP 401 Each . \$8.95 10+ . \$8.75

**MUSCLE**, Involuntary (smooth), non human.

JP 420 Each . \$5.50 10+ . \$5.25

**MUSCLE**, Voluntary (striated), non human.

JP 430 Each . \$5.50 10+ . \$5.25

**MUSCLE**-non-human, 3 types, sec.

JP 440 Each . \$14.50 10+ . \$14.25

**INTESTINE**, non human. Duodenum with Brunner's glands.

JP 530 Each . \$5.75 10+ . \$5.50

**INTESTINE**, 3 types, small intestine. Non-human.

JP 533 Each . \$13.25 10+ . \$13.00

**GIANT MULTIPOLAR NEURONS**

Oxspinal cord smear. Stained to show Nissl substance within the cell.

JP 625 Each . \$9.50 10+ . \$9.25

**NERVE**, non-human, c.s. and l.s.

JP 632 Each . \$8.25 10+ . \$8.00

**SPINAL CORD**, 4 regions, c.s. Sections of the cervical, thoracic, lumbar and sacral regions. Non-human.

JP 617 Each . \$8.95 10+ . \$8.75

**CEREBELLUM**, non-human.

JP 600 Each . \$5.95 10+ . \$5.75

**CEREBRUM**, non-human.

JP 605 Each . \$5.95 10+ . \$5.75

**KIDNEY**, non-human.

JP 105 Each . \$5.95 10+ . \$5.75

**TESTIS**, non-human, c.s.

JP 721 Each . \$5.95 10+ . \$5.75

**OVARY**, non-human, sec.

JP 726 Each . \$5.95 10+ . \$5.75

**SPERM SMEAR**, Guinea Pig.

JP 741 Each . \$5.95 10+ . \$5.75

**LUNG**, section, showing general structure.

JP 830 Each . \$5.95 10+ . \$5.75

### HISTOLOGY - HUMAN

**TONGUE**, general structure.

JP 550 Each . \$7.50 10+ . \$7.25

**ESOPHAGUS**, upper region showing striated muscle.

JP 562 Each . \$10.95 10+ . \$10.75

**EPITHELIUM**, squamous, smear of the buccal mucosa.

JP 145 Each . \$6.50 10+ . \$6.25

**EPITHELIUM**, 3 types, secs. of kidney, intestine & skin.

JP 180 Each . \$9.50 10+ . \$9.25

**BLOOD SMEAR**, Giemsa stain.

JP 350 Each . \$7.25 10+ . \$7.00

**BLOOD SMEAR**, Wright's stain.

JP 351 Each . \$7.25 10+ . \$7.00

**ARTERY & VEIN**, human, c.s.

JP 363 Each . \$7.50 10+ . \$7.00

**MUSCLE**, cardiac, human.

JP 450 Each . \$7.50 10+ . \$7.00

**MUSCLE**, involuntary (smooth), human.

JP 460 Each . \$10.95 10+ . \$10.75

**MUSCLE**, voluntary (striated), human.

JP 470 Each . \$7.50 10+ . \$7.25

**MUSCLE**, 3 types, sec., human.

JP 480 Each . \$11.95 10+ . \$11.75

**ADIPOSE TISSUE**, human.

JP 255 Each . \$7.50 10+ . \$7.25

**CARTILAGE**, human, hyaline and elastic.

JP 267 Each . \$8.50 10+ . \$8.25

**INTESTINE**, duodenum with Brunner's glands.

JP 575 Each . \$7.50 10+ . \$7.25

**INTESTINE**, small, 3 regions, c.s.

JP 578 Each . \$9.95 10+ . \$9.75

**LIVER**, sec.

JP 583 Each . \$7.50 10+ . \$7.25

**CEREBELLUM**, human.

JP 650 Each . \$7.50 10+ . \$7.25

**CEREBRUM**, human.

JP 655 Each . \$7.50 10+ . \$7.25

**CEREBRUM & CEREBELLUM**, sec.

JP 659 Each . \$8.50 10+ . \$8.25

**KIDNEY**, human sec.

JP 750 Each . \$9.50 10+ . \$9.25

**TESTIS**, human sec.

JP 763 Each . \$10.95 10+ . \$10.75

**OVARY**, human sec.

JP 766 Each . \$7.50 10+ . \$7.25

**SPERM SMEAR**, human.

JP 790 Each . \$8.50 10+ . \$8.25

**LUNG**, human, general structure.

JP 870 Each . \$7.50 10+ . \$7.25

**ADRENAL GLAND**, human sec.

JP 950 Each . \$7.50 10+ . \$7.25

**THYROID GLAND**, human sec.

JP 980 Each . \$7.50 10+ . \$7.25

### HUMAN PATHOLOGY

**SICKLE CELL ANEMIA**, smear.

JQ 160 Each . \$8.95 10+ . \$8.75

**"SMOKER'S LUNG,"** sec.

JQ 522 Each . \$11.50 10+ . \$11.25

## ✓ BASIC STEREOMICROSCOPE

by Ken-A-Vision



### PROFESSOR STEREOMICROSCOPE

- ◆ 10x eyepiece with 2x objective
- ◆ High impact plastic construction
- ◆ Operates for 300 hours on two AA batteries (not included)
- ◆ Large knobs for small hands
- ◆ Cool light - LED styled illumination
- ◆ Portable - complete with dust cover
- ◆ Student proof



**ESH200** Each . . . . . \$109.00  
**ESH210** Set of 10 units . . . \$919.00

## ✓ STUDENT STEREOMICROSCOPES

by Walter Products



WA-XKC-2X-P



WA-XKC-2X-2LED

- ◆ Paired 10x widefield eyepieces
- ◆ Inclined 45° binocular head with diopter adjustment in one ocular tube
- ◆ Parfocaled & parcentered Achromatic objectives
- ◆ Choice of corded or cordless LED illumination
- ◆ Post mounted head rotates 180° and is adjustable for various working distances
- ◆ Illumination includes both top and bottom lighting
- ◆ Rugged all metal construction, almost 11" tall
- ◆ Rack and pinion focusing with safety stop
- ◆ Interpupillary distance adjustable 51mm to 75mm

### Single Magnification

Catalog #	Each	5+ each	Magnification	Illumination
WA-XKC-2X-P	\$169.00	\$160.75	20x only	None
WA-XKC-2X-2LED	\$239.00	\$227.00	20x only	LED - Corded
WA-XKC-2X-RC	\$269.00	\$255.75	20x only	Cordless LED

### Dual Magnification

Catalog #	Each	5+ each	Magnification	Illumination
WA-ST1310	\$259.00	\$246.00	10x & 30x	LED - Corded
WA-ST1310RC	\$279.00	\$265.00	10x & 30x	Cordless LED
WA-ST2410	\$259.00	\$246.00	20x & 40x	LED - Corded
WA-ST2410RC	\$279.00	\$265.00	20x & 40x	Cordless LED

### Tri-Magnification

Catalog #	Each	5+ each	Magnification	Illumination
WA-ST12315	\$289.00	\$274.75	15x, 30x, & 45x	LED - Corded
WA-ST12315RC	\$299.00	\$284.00	15x, 30x, & 45x	Cordless LED

## ✓ ADVANCED VISIONSCOPE 2

by Ken-A-Vision



- ◆ 45° inclined binocular head rotatable 360°
- ◆ 1 diopter adjustment with eyepiece tube
- ◆ Fixed arm metal casting with built-in coarse and fine focus, rack & pinion
- ◆ 80 mm focal range
- ◆ "T" designed 2 way handle for easy and safe transportation
- ◆ Illumination includes both upper & lower dimmer controlled LED lighting
- ◆ Choice of: corded LED or cordless LED
- ◆ 10-year limited warranty



Catalog #	Each	5+ each	Eyepiece	Objectives	Magnification	Illumination
T-22001	\$399.00	\$379.00	10x	1x & 3x	10x & 30x	Corded LED
T-22001C	\$449.00	\$426.50	10x	1x & 3x	10x & 30x	Cordless LED
T-22041	\$399.00	\$379.00	10x	2x & 4x	20x & 40x	Corded LED
T-22041C	\$449.00	\$426.50	10x	2x & 4x	20x & 40x	Cordless LED

### LENS PAPER

Booklet contains 50 sheets, 4" x 6".

AP 250 Each . . . \$1.95 Per 12 . . \$15.00



## ✓ ZOOM STEREOMICROSCOPE

### A High Quality Zoom Stereomicroscope

by Ken-A-Vision



- ◆ 45° inclined binocular head rotatable 360 degrees
- ◆ 1:4 zoom
- ◆ .7 - 4.5 zoom par focal magnification
- ◆ Interpupillary distance adjustment from 55 mm to 75 mm with diopter on both 10x eyepiece tubes
- ◆ Sharp image with glass prisms
- ◆ Working distance 100 mm
- ◆ Rack and Pinion focusing
- ◆ LED light upper and lower
- ◆ Side mounted zoom controls
- ◆ Full size 170 mm x 230 mm metal base with built-in three way illumination system
- ◆ 10-year limited warranty

Catalog #	Each	5+ each	Eyepiece	Objectives	Range	Illumination
T-26001	\$759.00	\$721.00	10x	1x & 4x	10x & 40x	Corded LED
T-26001C	\$799.00	\$759.50	10x	1x & 4x	10x & 40x	Cordless LED

MICROSCOPES





## WALTER "2030" EXPLORER SERIES

- ◆ All metal frame
- ◆ Uses a prism to gather light
- ◆ 3½" moveable stage
- ◆ Locked-on, spring loaded stage clips
- ◆ Adjustable arm tilts up to 45°
- ◆ Dustcover and instruction manual included



WA2030-20

Catalog #	Each	5+ each	Objectives	Magnification	Illumination
WA2030-20	\$110.00	\$104.50	4x	20x	Prism
WA2030-40	\$119.00	\$113.00	4x	40x	Prism
WA2030-100	\$125.00	\$118.75	10x	100x	Prism

## WALTER "2070B" MICROSCOPE

- ◆ All metal construction
- ◆ 10x widefield eyepiece
- ◆ Objectives: 4x, 10x & 40x
- ◆ Top light used as stereo for macro-magnification & opaque objects
- ◆ Bottom light used for prepared slides
- ◆ Round moveable 360° mechanical stage
- ◆ Diaphragm 6 color filter disc
- ◆ Operates on 2 "AA" batteries or on included AC adapter
- ◆ Includes dust cover and instructions



WA2070B

**WA2070B** Each . . . . . \$119.95  
5 or more, each . . . . . \$113.95

## WALTER ELEMENTARY COMPOUND MICROSCOPE

- ◆ 360 degree rotatable monocular head
- ◆ LED corded or LED cordless (rechargeable)
- ◆ Reverse triple nosepiece
- ◆ 6 hole diaphragm
- ◆ Locked 10x eyepiece with pointer
- ◆ Coarse or coarse/fine focusing
- ◆ 3½" round moveable stage
- ◆ A full 10½" high with a 5¾" x 4" base
- ◆ Includes dust cover & instructions



WA2057RC

Catalog #	Each	5+ each	Objectives	Focusing	LED Light
WA2057L	\$142.00	\$134.95	4x, 10x, 40xR	Coarse only	Corded
WA2057RC	\$155.00	\$147.25	4x, 10x, 40xR	Coarse only	Cordless
WA2057CXL	\$159.00	\$151.00	4x, 10x, 40xR	Coarse & Fine	Corded
WA2057CXRC	\$179.00	\$170.00	4x, 10x, 40xR	Coarse & Fine	Cordless

## WALTER "3050" SERIES

- ◆ Modern design with handle
- ◆ Monocular, 10x eyepiece & pointer
- ◆ 45° inclined head, rotatable 360°
- ◆ 3½" round moveable stage rotates 360° with spring mounted stage clips
- ◆ Models with 100XR objective have built-in mechanical stage, square stage
- ◆ Objectives: Achromatic color-coded 4X, 10X, 40XR or 4X, 10X, 40XR & 100XR
- ◆ Separate coarse & fine or coaxial focusing
- ◆ Choice of LED corded or cordless
- ◆ Positive stops at both ends



WA3050-LED

Catalog # / Light	Each	5+ each	Objectives	Stage
WA3050-LED LED Corded	\$179.00	\$170.00	4x, 10x, 40xR Separate Focus	Moveable Stage
WA3050-RC LED Cordless	\$189.00	\$179.55	4x, 10x, 40xR Separate Focus	Moveable Stage
WA3050-100-LED LED Corded	\$389.00	\$369.75	4x, 10x, 40xR, 100xR Coaxial Focus	Mech. Stage
WA3050-100-RC LED Cordless	\$399.00	\$379.00	4x, 10x, 40xR, 100xR Coaxial Focus	Mech. Stage

## WALTER STUDENT MICROSCOPE

- ◆ Choice of 15 W tungsten illumination or Cordless LED lighting with charger
- ◆ Rack & pinion focusing, moveable stage
- ◆ 6-hole disc diaphragm & 0.65 condenser
- ◆ Hinged at base to adjust angle
- ◆ 4x, 10x and 40xR objectives
- ◆ 10x eyepiece with pointer
- ◆ Focus: coarse only or separate coarse & fine
- ◆ Rotatable monocular head



WA2053FCL

Catalog #	Each	5+ each	Objectives	Focusing	Light
WA2053L	\$149.00	\$141.75	4x, 10x, 40xR	Coarse only	Tungsten
WA2053-RC	\$189.00	\$179.50	4x, 10x, 40xR	Coarse only	LED cordless
WA2053FCL	\$159.00	\$151.00	4x, 10x, 40xR	Coarse & Fine	Tungsten

## WALTER "BMT" SERIES

- ◆ 4x, 10x, & 40xR objectives
- ◆ Reversed nosepiece
- ◆ Separate coarse & fine focus
- ◆ Light - choice of corded or cordless LED
- ◆ Includes variable light intensity control
- ◆ 10x eyepiece with calibrated pointer, 45° inclined, rotating 360°
- ◆ 5-aperture disc diaphragm
- ◆ 4¾" x 4½" stage with stage clips
- ◆ Includes cord holder, instruction manual & dust cover



WA-BMT-LED

Catalog #	Each	5+ each	Objectives	Stage	Light
WA-BMT-LED Monocular	\$239.00	\$227.00	4x, 10x, 40xR Separate focus	0.65 NA	LED corded
WA-BMT-RC Monocular	\$249.00	\$236.75	4x, 10x, 40xR Separate focus	0.65 NA	LED cordless

More configurations are available. Call for details.



## WALTER "40-CX" SERIES

- ◆ 10X wide-field eyepiece with pointer, 45° inclined head, 360° rotation
- ◆ Objectives are DIN achromatic, par-centered, par-focal color-coded 4X, 10X, 40XR, & select models 100XR
- ◆ Reverse nosepiece for working room
- ◆ Coaxial coarse & fine focusing
- ◆ Mechanical stage, 1.25 ABBE, and 100XR objective on select models
- ◆ Illumination: LED with power cord or rechargeable cordless (LED) lighting
- ◆ Cord holder for cord storage
- ◆ With dust cover & instructions



Catalog #	Each	5+ each	Objectives	Mech. Stage	Light
WA40CXM Monocular	\$269.00	\$255.50	4x, 10x, 40xR	0.65 NA	LED Corded
WA40CXMRC Monocular	\$289.00	\$274.50	4x, 10x, 40xR	0.65 NA	LED Cordless
WA40CXT Dual View	\$319.00	\$303.00	4x, 10x, 40xR	0.65 NA	LED Corded
WA40CXM100 Monocular	\$369.00	\$350.50	4x, 10x, 40xR, & 100xR	1.25 Abbe Mech. Stage	LED Corded
WA40CXM100RC Monocular	\$389.00	\$369.50	4x, 10x, 40xR, & 100xR	1.25 Abbe Mech. Stage	LED Cordless
WA40CXB100 Binocular	\$499.00	\$474.00	4x, 10x, 40xR, & 100xR	1.25 Abbe Mech. Stage	LED Corded
WA40CXB100RC Binocular	\$529.00	\$502.50	4x, 10x, 40xR, & 100xR	1.25 Abbe Mech. Stage	LED Cordless

## WALTER "30" SERIES

- ◆ Superior quality 10X wide-field eyepiece with calibrated pointer reticle
- ◆ Monocular 45 inclined, binocular 45 inclined head, 360 rotation
- ◆ DIN achromatic, objectives parcentered, parfocal color-coded 4X, 10X, 40X (R), 100X (R) oil
- ◆ Coaxial or separate coarse & fine focusing
- ◆ Seidentopf binocular head with diopter adjustment on the left eye tube
- ◆ Positive stops at both ends of travel
- ◆ Tension adjustment eliminates drift
- ◆ Corded LED lighting
- ◆ More room with reverse nosepiece



Catalog #	Each	5+ each	Objectives	Stage	Light
WA30-M Monocular	\$329.00	\$312.50	4x, 10x, 40xR Separate focus	0.65 NA	LED Corded
WA30-B Binocular	\$499.00	\$474.00	4x, 10x, 40xR Separate focus	0.65 NA	LED Corded
WA30-CXB Binocular	\$509.00	\$483.50	4x, 10x, 40x Coaxial focus	1.25 Abbe Mechanical Stage	LED Corded
WA30-CXB-100 Binocular	\$539.00	\$512.00	4x, 10x, 40xR, & 100XR Coaxial focus	1.25 Abbe Mechanical Stage	LED Corded

## WALTER "M" SERIES

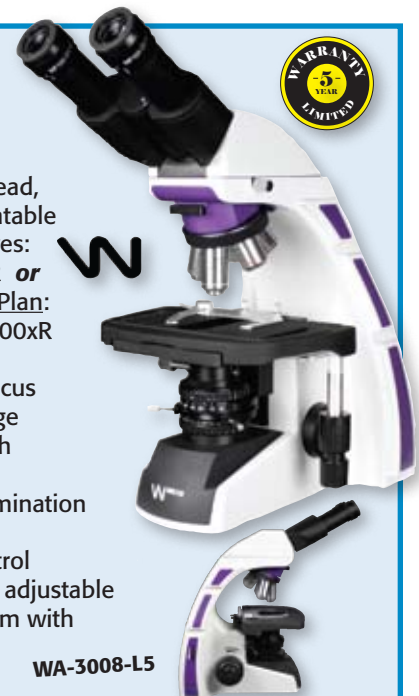
- ◆ 360° rotatable monocular or binocular head
- ◆ 10x eyepiece widefield with pointer
- ◆ Parfocal & parcentered achromatic objectives: 4x, 10x, 40xR & 100xR DIN
- ◆ Rack and pinion, adjustable 1.25 Abbe
- ◆ Built in mechanical stage
- ◆ Choice of separate or coaxial coarse & fine focus
- ◆ Includes LED light; other lighting available - call for details
- ◆ Field diaphragm above light condenser for basic Koehler illumination



Catalog #	Each	5+ each	Objectives & Focus	Mech. Stage	Light
WA-MM100LED Monocular	\$429.00	\$407.75	4x, 10x, 40xR, & 100xR Separate focus	Yes	LED corded
WA-MCXM100LED Monocular	\$459.00	\$436.00	4x, 10x, 40xR, & 100xR Coaxial focus	Yes	LED corded
WA-MCXB100LED Binocular	\$579.00	\$550.00	4x, 10x, 40xR, & 100xR Coaxial focus	Yes	LED corded

## WALTER "3000" GOLD/SILVER SERIES

- ◆ Siedentopf binocular head, 30° inclined, 360° rotatable
- ◆ Finite Plan DIN objectives: 4x, 10x, 40xR & 100xR **or** Infinity High Contrast Plan: 4x, 10x, 20x, 40xR & 100xR
- ◆ Reversed nosepiece
- ◆ Coaxial coarse & fine focus
- ◆ Built-in mechanical stage
- ◆ Both 10x eyepieces with diopter adjustment
- ◆ Built-in LED Kohler illumination with field diaphragm
- ◆ With light intensity control 1.25 Abbe condenser, adjustable aperture, iris diaphragm with graduated scale



Catalog #	Each	5+ each	Objectives	Mech. Stage	Light
WA-3007-L5 Silver Series	\$799.00	\$759.00	Finite Plan 4x, 10x, 40xR, & 100xR	Yes	LED corded
WA-3008-L5 Gold Series	\$949.00	\$855.00	Infinity High Contrast 4x, 10x, 20x, 40xR, & 100xR	Yes	LED corded



## " 131 " SERIES

- ◆ 45° inclined monocular head rotates 360°
- ◆ Widefield 10x eyepiece with pointer
- ◆ DIN achromatic, parfocalled, parcentered, color-coded objectives
- ◆ Separate coarse and fine focusing
- ◆ Stage 110 x 120 mm with stage clips
- ◆ Mechanical stage available on select models
- ◆ Built-in 0.65 stage condenser with calibrated 5-hole disc diaphragm or 1.25 Abbe condenser
- ◆ Limited lifetime warranty, excludes bulbs



NT134-CLED

Catalog #	Each	5+ Each	Objectives	Mech. Stage / Condenser	Light
NT131-CLED	\$265.00	\$251.75	4x, 10x, 40xR	No / 0.65	LED corded
NT134-CLED	\$449.00	\$426.50	4x, 10x, 40xR, & 100xR	Yes / 1.25 Abbe	LED corded

## " ECOLINE " SERIES

- ◆ 30° inclined head rotates 360°
- ◆ Widefield 10x eyepiece with pointer
- ◆ Coaxial coarse and fine focusing
- ◆ DIN achromatic, parfocalled, parcentered, color-coded objectives
- ◆ 4-hole objective turret, reverse position, ball-bearing mounted for smooth, precise changes in magnification
- ◆ Includes mechanical stage
- ◆ Built-in 1.25 Abbe condenser
- ◆ 3 year warranty



D-ELM



Catalog #	Each	5+ Each	Objectives	Mechanical Stage / Condenser	Light
D-ELM Monocular	\$419.00	\$398.00	4x, 10x, 40xR, & 100xR	Includes MS. / 1.25 Abbe	LED Corded
D-ELB Binocular	\$509.00	\$483.75	4x, 10x, 40xR, & 100xR	Includes MS. / 1.25 Abbe	LED Corded

## " 210 " SERIES

- ◆ Monocular 45° inclined head, rotates 360°
- ◆ Head with C-mount port for attaching digital camera (sold separately)
- ◆ Widefield 10x eyepiece with pointer
- ◆ Reversed nosepiece
- ◆ DIN achromatic, parfocalled, parcentered, color-coded objectives
- ◆ Separate coarse & fine focusing
- ◆ Mechanical stage with ABBE condenser available on model NT212
- ◆ Built-in corded LED illumination
- ◆ Limited lifetime warranty, excludes bulbs



NT211



Catalog #	Each	5+ Each	Objectives	Mechanical Stage	Light
NT210	\$349.00	\$331.75	4x, 10x, 40xR	No	Corded LED
NT211	\$459.00	\$436.00	4x, 10x, 40xR	Yes	Corded LED
NT212	\$529.00	\$502.75	4x, 10x, 40xR, & 100xR	Yes	Corded LED

## " 167 " SERIES

- ◆ Inclined viewing head rotates 360°
- ◆ Widefield 10x eyepiece with pointer
- ◆ LED lighting with variable rheostat
- ◆ Low position mechanical stage
- ◆ Coaxial coarse & fine focusing
- ◆ DIN achromatic, parfocalled, parcentered, color-coded objectives, reversed nosepiece
- ◆ 1.25 Abbe condenser, iris diaphragm, swing-out holder - clear blue, green & yellow filters supplied
- ◆ Limited lifetime warranty, excludes bulbs



NT168-SP



Catalog #	Each	5+ Each	Objectives	Mechanical Stage / Condenser	Light
NT167-SP Monocular	\$626.00	\$594.75	4x, 10x, 40xR, & 100xR	Includes MS. / 1.25 Abbe	LED
NT168-SP Binocular	\$815.00	\$774.25	4x, 10x, 40xR, & 100xR	Includes MS. / 1.25 Abbe	LED

## STEREOMICROSCOPES

- ◆ Inclined viewing with fixed head
- ◆ Widefield 10x eyepieces, diopter adjustment
- ◆ Achromatic objectives are parfocalled & parcentered
- ◆ 4-position light control: top & bottom, top only, bottom only or off
- ◆ Rack & pinion focusing with slip clutch & tension adjustment
- ◆ Includes two 80 mm stage plates: frosted & reversible black/white plastic contrast plates
- ◆ LED illumination (top & bottom)
- ◆ 8 hour charge provides 50 hours use cordless LED
- ◆ Compact size: 12" tall
- ◆ 5 year limited lifetime warranty



NTTBL-10LED



Catalog #	Each	5+ Each	Objectives	Magnification
NT452TBL-10LED	\$285.00	\$270.75	1x & 3x	10x & 30x
NT453TBL-10LED	\$285.00	\$270.75	2x & 4x	20x & 40x

## STEREOMICROSCOPES

- ◆ Inclined viewing head, rotates 360°
- ◆ Paired widefield 10x eyepieces
- ◆ 12 volt 10 watt tungsten illumination (top & bottom)
- ◆ Base: 153 mm wide x 218 mm deep
- ◆ Heavy duty rack & pinion focusing with slip clutch & tension adjustment
- ◆ Achromatic objectives are parfocalled, and parcentered
- ◆ 4-position switch: bottom only, top only, top/bottom, off



NT410TBL-10



Catalog #	Each	5+ Each	Objectives	Magnification	Light
NT410TBL10	\$349.00	\$331.50	1x & 3x	10x & 30x	Tungsten
NT411TBL10	\$349.00	\$331.50	2x & 4x	20x & 40x	Tungsten





## SWIFT M2250 SERIES

### INTERMEDIATE COMPOUND

- ◆ Monocular body is 360° rotatable
- ◆ 4x, 10x, and 40x DIN objectives
- ◆ Locked-on 10x eyepiece & pointer
- ◆ Five apertures disc diaphragm
- ◆ Stage 115 x 120 mm with locked-on stage clips
- ◆ Separate coarse & fine focus knobs on each side
- ◆ Tungsten or LED illumination
- ◆ Includes cord hanger on back for cord storage
- ◆ Limited lifetime warranty



Catalog #	Each	5+ Each	Objectives	Light
M2251B	\$259.00	\$246.00	4x, 10x, 40xR	20 Watt Tungsten
M2251CL	\$275.00	\$261.25	4x, 10x, 40xR	Cordless LED
M2251C	\$299.00	\$284.00	4x, 10x, 40xR	Cordless LED

## SWIFT M3600 SERIES

### EDUCATIONAL MICROSCOPES

- ◆ Monocular, Pointmaster® eyepiece (W10x)
- ◆ Head with C-mount port for attaching camera
- ◆ Separate coarse and fine focus
- ◆ Locked-on eye tube and stage clips
- ◆ Light: Corded or rechargeable Cordless LED (50 hrs)
- ◆ 100xR objective, mechanical stage & Abbe condenser available on select models
- ◆ Cord hanger included; UL/CUL approved
- ◆ Limited lifetime warranty



Catalog #	Each	5+ Each	DIN Objectives	Mech. Stage / Condenser	Light
M3601 Monocular	\$379.00	\$360.00	4x, 10x, 40xR	None / 0.65	Cordless LED
M3601C Monocular	\$389.00	\$369.55	4x, 10x, 40xR	None / 0.65	Cordless LED
M3602-4 Monocular	\$495.00	\$470.25	4x, 10x, 40xR, & 100xR	With M.S. & 1.25 Abbe	Cordless LED
M3602C-4 Monocular	\$499.00	\$474.00	4x, 10x, 40xR, & 100xR	With M.S. & 1.25 Abbe	Cordless LED

## SWIFT M3700 SERIES

### ADVANCED MICROSCOPE

- ◆ Binocular 360° rotatable head, 45° inclined
- ◆ Widefield 10x eyepieces
- ◆ Reversed nosepiece with semi-plan parfocalled & parcentered objectives: 4xD, 10xD, 40xRD & 100xRD,
- ◆ Spring loaded 40x & 100x
- ◆ Built-in low drive mechanical stage
- ◆ Coaxial focusing
- ◆ Abbe condenser
- ◆ Cordless LED with dimmer switch



Catalog #	Each	5+ Each	Objectives	Light
M3702CB-4	\$799.00	\$759.00	4x, 10x, 40xR, & 100xR	Cordless LED

## SWIFT SM100 SERIES

### LED STEREO MICROSCOPES

- ◆ "Slip-clutch" system protects against over-focusing
- ◆ Top & bottom illumination with choice of Corded or Cordless
- ◆ W10X eyepiece with right eyepiece diopter focusing adjustment
- ◆ Locked-on eyepiece and stage clips
- ◆ Includes cord-hanger and built-in handle
- ◆ Ideal for high school classrooms and up
- ◆ Limited lifetime warranty



Catalog #	Each	5+ Each	Magnification	Light
SM101	\$389.00	\$369.25	10x & 30x	Cordless LED
SM101C	\$399.00	\$379.25	10x & 30x	Cordless LED
SM102	\$389.00	\$369.25	20x & 40x	Cordless LED
SM102C	\$399.00	\$379.25	20x & 40x	Cordless LED
SM105	\$559.00	\$531.00	Zoom 10x - 30x	Cordless LED
SM105C	\$575.00	\$546.25	Zoom 10x - 30x	Cordless LED

## SWIFT M10 SERIES

### ADVANCED MICROSCOPE

- ◆ Binocular Seidentopf head
- ◆ Reversed nosepiece
- ◆ Coaxial fine & coarse focus
- ◆ Choice of Semi-plan or Plan objectives
- ◆ 4x, 10x, 40x, & 100xR objectives
- ◆ Corded LED with Dimmer Switch
- ◆ Built-in low drive mechanical stage
- ◆ Abbe rack and pinion condenser with iris diaphragm



Catalog #	Each	5+ Each	Objectives	Light
M10B-S	\$975.00	\$926.25	Semi-plan	Cordless LED
M10B-P	\$1099.00	\$1049.75	Plan	Cordless LED

## SWIFT M3 SERIES

### MICRO / MACRO MICROSCOPE

- ◆ Three microscopes in one: microscope, macro, or in the field
- ◆ 4x, 10x, & 40x (micro) & 1x (macro)
- ◆ Binocular
- ◆ Detachable tripod legs fold for storage
- ◆ Rechargeable cordless top & bottom LED lighting
- ◆ Multiple stage positions for micro & macro
- ◆ 10x eyepiece
- ◆ 3 year warranty



Catalog #	Each	5+ Each	Objectives	Mech. Stage	Light
M3-B Binocular	\$595.00	\$565.25	4x, 10x, 40xR & 2x (macro)	None	Cordless LED



**CORDLESS PREPSCOPE 2**

**FOR ELEMENTARY & MIDDLE SCHOOLS**

- ◆ USB compliant charging system
- ◆ DIN widefield 10x eyepiece, locked on, 360° rotating prism monocular head
- ◆ Objectives: DIN parfocal, parcentered, achromatic, 4x, 10x, 40xR
- ◆ Reverse three hole nosepiece with positive click stops to prevent damage
- ◆ Cordless LED styled cool light
- ◆ Square stage with stage clips
- ◆ Co-axial focusing - one knob controls both coarse & fine focus
- ◆ Aluminum single cast body with storage 3/4 sized frame for smaller hands
- ◆ Height 12", base 6" x 4<sup>3</sup>/<sub>4</sub>", 5 pounds
- ◆ Limited 10-year warranty



**Cordless TU-12011C**

Catalog #	Each	5+ each	Objectives	Light
TU-12011C	\$179.00	\$169.95	4x, 10x, 40xR	Cordless LED



**"THE PROFESSOR" COMPOUND MICROSCOPE**

"The Professor" is a microscope for younger students, featuring 40x, 100x, and 400x magnification with a 10x eyepiece and quality glass optics. It is designed with durability and ease of use with its shock resistant construction and non-removable parts. With up to 300 hours of operation utilizing 3 AA batteries (not included) and a top & bottom light source equivalent to 10 watts, young minds will view sharp microscopic images about anywhere.

**ESH101** Each . . . \$99.00

**ESH111** Set of 10 units . . \$809.00



**ESH101**

**CORDLESS CORESCOPE 2**

- ◆ Variable light control/dimmer
- ◆ USB compliant charging system
- ◆ DIN widefield 10x eyepiece with pointer, locked on, 360° rotating prism head
- ◆ Objectives are DIN parfocal, parcentered, achromatic, 4x, 10x, 40xR (retractable)
- ◆ Triple or quadruple nosepiece with positive click stops
- ◆ Cordless LED illumination
- ◆ Separate coarse & fine focus on one axial
- ◆ Multi-directional floating stage
- ◆ Aluminum single cast body
- ◆ Limited 10-year warranty



**Cordless**

**TU-17011C**

Catalog #	Each	5+ each	Head	Mech Stage	Objectives
TU-17011C	\$219.00	\$208.00	Monocular	No	4x, 10x, 40xR
TU-17021C	\$299.00	\$284.00	Dual View	No	4x, 10x, 40xR
TU-17012C	\$329.00	\$312.50	Monocular	Yes	4x, 10x, 40xR, 100xR
TU-17031C	\$429.00	\$407.75	Binocular	Yes	4x, 10x, 40xR, 100xR

**CORDLESS DUAL PURPOSE SCOPE**

- ◆ USB compliant charging system
- ◆ Combines a standard compound microscope with limited stereomicroscope capability
- ◆ Limited stereo capabilities - 100x magnification
- ◆ Objectives: 2x, 4x, 10x, 40xR DIN
- ◆ Floating stage with spring load stage clips
- ◆ Separate top light for viewing large, macro or opaque specimens
- ◆ Bottom light for standard microscope slides



**Cordless**

**Combines compound & stereo features**



**TU-19311C**

Catalog #	Each	5+ each	Head	Objectives
TU-19311C	\$449.00	\$426.75	Monocular	2x, 4x, 10x, 40xR
TU-19321C	\$499.00	\$474.00	Dual View	2x, 4x, 10x, 40xR
TU-19331C	\$599.00	\$569.00	Binocular	2x, 4x, 10x, 40xR

**Monocular TU-19011C**



**Cordless**



**COMPREHENSIVE SCOPE 2**

- ◆ USB compliant charging system
- ◆ Cordless - rechargeable NiMH batteries
- ◆ 10x widefield eyepiece with pointer
- ◆ Coaxial coarse and fine focusing knobs
- ◆ Cool light - LED illumination
- ◆ Variable light control/dimmer
- ◆ Monocular and Dual Head models include: 4x, 10x, & 40xR DIN objectives with 5 hole disk diaphragm
- ◆ Binocular model includes: 4x, 10x, 40xR, & 100xR DIN objectives, Abbe condenser and Mechanical Stage

**Dual View TU-19021C**

**Binocular TU-19031C**



**Pop-Up Handle**

**Power Cord Compartment**

Catalog #	Each	5+ each	Head	Objectives	Mechanical Stage	Light Style
TU-19011C	\$399.00	\$379.00	Monocular	4x, 10x, 40xR	No	Cordless
TU-19012C	\$479.00	\$455.00	Monocular	4x, 10x, 40xR, 100xR	Yes	Cordless
TU-19021C	\$449.00	\$426.75	Dual Head	4x, 10x, 40xR	No	Cordless
TU-19031C	\$769.00	\$730.75	Binocular	4x, 10x, 40xR, & 100xR	Yes	Cordless



## DIGITAL STUDENT MICROSCOPE

The 2057 Digital Series offers the convenience of connecting your microscope to your computer. Built-in CMOS camera connects via USB 2.0 to capture, manipulate and view images. Compatible with Windows operation system (only 32 bit - not compatible with 64 bit / not compatible with Macintosh systems). Walter Products.



- ♦ Rugged all metal construction, 12" height
- ♦ 45° mounted monocular head - rotates 360°
- ♦ Color coded 4x, 10x and 40xR achromatic objectives
- ♦ Adjustable stage stop to prevent damage to the slide
- ♦ Round moveable stage with spring-loaded stage clips
- ♦ Six hole disc diaphragm with coarse focusing knobs
- ♦ LED light, with dust cover, USB cable, driver & instructions
- ♦ Limited lifetime warranty on microscope, 1 year on camera

**1.3 Megapixel** WA-2057-LD13 ... \$389.00  
**3.0 Megapixel** WA-2057-LD30 ... \$469.00



## LTM SERIES DIGITAL MICROSCOPE

The LTM Digital Series features high resolution DIN objective. By Walter Products.

- ♦ 10x widefield eyepiece with calibrated pointer
- ♦ 45° mounted monocular head - rotates 360°
- ♦ 4x, 10x, 40xR & 100xR DIN objectives are color coded
- ♦ Separate coarse and fine focus with rack and pinion
- ♦ Adjustable N.A. 1.25 Abbe condenser
- ♦ Includes Built-in mechanical stage and cord holder
- ♦ Light intensity control
- ♦ LED light, with dust cover, & USB cable
- ♦ Resolution: 1600 x 1200
- ♦ Compatibility: Windows 2000/XP/Vista/7 & MacOSX Leopard 10.2 or better
- ♦ Limited lifetime warranty on microscope, 1 year on camera

**1.3 Megapixel** LTM-402100D13 ... \$599.00  
**2.0 Megapixel** LTM-402100D20 ... \$699.00



## MEGAPIXEL DIGITAL CORESCOPE

Ken-A-Vision's Digital CoreScope 2 is an excellent and affordable way to introduce students to digital microscopy. The popular 3/4 size frame offers a built-in digital camera head, and the USB connector lets you capture images directly on your computer. It can be used as either a standard or digital microscope.

- ♦ Features the monocular CoreScope body
- ♦ 2.07 Megapixel
- ♦ 10x eyepiece with diopter
- ♦ 4x, 10x, & 40x DIN objectives
- ♦ Output resolution: 1080P HD
- ♦ Separate coarse & fine focus
- ♦ LED light with dimmer control
- ♦ Round floating stage with stage clips
- ♦ Applied Vision Software included - works with MAC & Windows
- ♦ 10 year limited warranty on microscope & 1 year limited warranty on camera



T-17541C  
\$549.00



Connects to your computer or can be used as a stand alone microscope.

Storage area for A/C adapter  
A/C - USB adapter plug included



## MEGAPIXEL DIGITAL COMPREHENSIVE SCOPE 2

Ken-A-Vision's newest Digital Microscope produce digital images for instant display to a computer screen or audio/visual projector. Models have a modern, modular design on a very stable base. The arm of the microscopes feature a built-in handle for ease of carry and an integrated storage system for retaining items with the unit.

- ♦ 5.0 Megapixel CMOS camera
- ♦ Full screen imaging with 2592 x 1944 resolution
- ♦ USB 2.0 connection for computer use (not for TV monitors)
- ♦ USB compliant charging system
- ♦ Applied Vision 4 software included - works with MAC & Windows
- ♦ Works great as a cordless microscope when not plugged into a computer
- ♦ 45 degree angle head, 10x widefield eyepiece with pointer
- ♦ Objective lens 4x, 10x, 40xR, & 100xR
- ♦ Mechanical stage, low position coaxial
- ♦ Abbe condenser, NA 1.25 with LED lighting
- ♦ 10 year warranty on microscope, 1 year on camera



**Megapixel Digital Monocular** TU-19542C ... \$899.00  
**Megapixel Digital Binocular** TU-19642C ... \$1309.00

TU-19542C  
Monocular  
Digital



TU-19642C  
Binocular  
Digital



With EduCam® software you can broadcast to devices



Pop-Up Handle



Power Cord & Storage Compartment



**DIGITAL MICROSCOPES**

All compound units have a monocular head with WF10x eyepiece with pointer, separate coarse & fine focus. Both compound & stereo require USB 2.0, and include Motic Image Software (Windows XP & above, Mac OS X).



DC-128



DC4456H



DC4-212

Software included



Catalog #	Mega pixels	Style	Objectives	Mech. Stage	Lighting	Condenser	Each
DC-128	1.3	Compound	4-10-40-100	Yes	Cordless LED	Abbe	\$595.00
DC4-212	3.0	Compound	4-10-40-100	Yes	Cordless LED	Abbe	\$999.00
DC4456H	3.0	Stereo	1x - 3x	No	Hal. & Tung.	None	\$795.00

**ADVANCED BINOCULAR DIGITAL MICROSCOPE**

Advanced Biological Binocular microscope with precision optics. Has a Seidentopf head for comfortable viewing, coaxial focusing, low drive mechanical stage and LED illumination. Includes 3.0 MP camera with software.

**Includes:**

- ◆ 3.0 MP camera
- ◆ 10x widefield eyepiece
- ◆ 30° binocular head - rotates 360°
- ◆ 4x, 10x, 40xR & 100xR DIN objectives are color-coded
- ◆ Coaxial coarse and fine focus with safety stop rack
- ◆ 1.25 N.A. Abbe condenser with spiral focusing mount
- ◆ Low-position mechanical stage
- ◆ Corded LED illumination
- ◆ Includes Motic Images Software
- ◆ 3 year warranty



D-ELDB Each . . . . \$689.00

**SWIFT M10D DIGITAL MICROSCOPES**



Advanced biological binocular microscope with precision optics. Microscope has a Seidentopf head for comfortable viewing, coaxial focusing, low drive mechanical stage and LED illumination. Includes high resolution 3.0 MP camera with software.

**Includes:**

- ◆ 3.0 mega-pixel camera (2048 x 1536 resolution)
- ◆ 45° binocular head
- ◆ Corded LED illumination
- ◆ 10x widefield eyepiece
- ◆ 4x, 10x, 40xR & 100xR DIN objectives are color-coded
- ◆ Coaxial coarse and fine focus with safety stop rack
- ◆ 1.25 N.A. Abbe condenser with spiral focusing mount
- ◆ Low-position mechanical stage
- ◆ USB output - direct connection to PC or Mac
- ◆ Includes Motic Images Software
- ◆ Limited Lifetime warranty



Catalog #	Mega pixels	Style	Objectives	Mech. Stage	Each
M10DB-S	3.0	Semi-plan	4-10-40-100	Yes	\$1669.00
M10DB-P	3.0	Plan	4-10-40-100	Yes	\$1789.00
M10DB-MP	3.0	Multi-phase	4-10-40-100	Yes	\$2369.00

**MOTICAM 2 DIGITAL CAMERA**

This can be used as a Macro camera. Unit includes: live resolution of 2.0M, 12 mm focusable lens, C-ring, calibration slide for accurate measurements, mini USB cable, 2x variable diameter eyepiece adapter to attach to almost any microscope, Macro tube, and Motic Images Plus 2.0 software.



MOTICAM 2 MOT-2 . . \$349.00



**DIGITAL EYEPIECE CAMERAS**

The DN series cameras are new generation with high resolution. They offer Plug-and-Play compatibility. Compatible with Windows, XP, Vista, 7, 8, Linus and Mac. By Walter Products.

**Includes:**

- ◆ Digital Eyepiece Camera
- ◆ USB cable - 6' long
- ◆ Two rubber seal rings
- ◆ CD with software, driver and user manual
- ◆ Stage micrometer with 0.01 mm increments
- ◆ 2 eyepiece adapters (30mm & 35mm outer diameter)



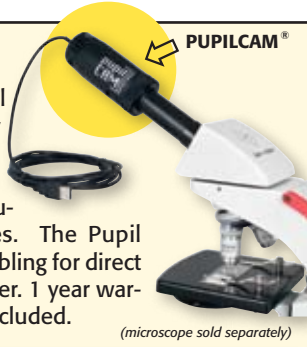
WA-DN13	1.3 Megapixel	1280 x 1024 at 15 frames/sec	\$269.00
WA-DN30	3.0 Megapixel	2048 x 1536 at 10 frames/sec	\$329.00
WA-DN50	5.0 Megapixel	2592 x 1944 at 5 frames/sec	\$379.00
WA-DN100	10.0 Megapixel	3856 x 2764 at 3 frames/sec	\$679.00





**PUPILCAM®**

PupilCAM is a digital microscope camera by Ken-A-Vision (the manufacturer of the Video Flex) that captures high resolution microscopic images. The PupilCAM has pre-attached cabling for direct interface to your computer. 1 year warranty. Microscope not included.



(microscope sold separately)

Connection	USB 2.0, Digital 1/4" CMOS
Resolution	1080 p HD
Pixel count	1920 x 1080 (2.07 megapixels) <b>or</b> 2048 x 1536 (3.2 megapixels)
USB Cable	2.4 meters
Power	From computer's USB port
Lens	8 mm
Software	Applied Vision™ (included)



**EduCam Compatible**

**Select from these models:**

**KEM Series:** with these PupilCam models, you remove the microscope eyepiece and insert this PupilCam into eyepiece opening. This PupilCam unit has a built-in 10X eyepiece.



1401KEM	(2.07 MP)	Each . . .	\$399.00
1402KEM	(3.2 MP)	Each . . .	\$590.00

**KRM Series:** these models have a rubber eyepiece adapter that slides over existing microscope eyepiece - you do not remove the microscope eyepiece.



1401KRM	(2.07 MP)	Each . . .	\$340.00
1402KRM	(3.2 MP)	Each . . .	\$590.00

**VISION VIEWER™**

**EduCam Compatible**



Capture your audience's attention with the latest design in flexible cameras! From the makers of Video Flex, Ken-A-Vision introduces the Vision Viewer ... a cost-efficient solution to image capturing. Their revolutionary designed 7890B uses CCD technology. The 7890UM Vision Viewer includes Applied Vision™ 4 Software that works with Windows & MACs.

- ◆ Ergonomical swivel head for ease of positioning
- ◆ 20" (51 cm) neck with sturdy base
- ◆ Pre-attached cabling & a one-switch on/off control
- ◆ 3.0 lux, focusing 8mm to infinity - includes 6 mm lens
- ◆ 20" (51 cm) neck with sturdy base
- ◆ Includes 28mm microscope adapter
- ◆ Three year warranty



**7890UM**



**With EduCam® software you can broadcast to devices**

Catalog #	Each	Connection
<b>7890B</b> Video only	\$399.00	<b>TV/Monitor only</b> 350 TV Lines - 512 x 491 Pixel Count
<b>7890UM</b> USB only	\$329.00	<b>Computer only</b> 3.2 Megapixel - 2048 x1536 Pixel Count

**VIDEO FLEX® CAMERAS**

Ken-A-Vision's Video Flex camera works with most microscopes! Easily attaches and allows enlargement of images for the whole classroom to view. Includes 28 mm and built-in 34½ mm eyepiece adapter, cables power supply, and storage case.

**High Definition Camera**

**EduCam Compatible**



**VF 7200HD**

Catalog #	Each	Connection	Pixel Count Frame Rate	Image Sensor	Contrast	Light Controls
<b>VF 7200HD</b> For computer connection only	\$699.00	USB 2.0 only	2592 x 1944 pixel 30 fps at 1080p HD	5 Megapixel CMOS	Fixed, adjustable via software	Fixed, adjustable via software



"KENA" includes software, storage bag & touch tube.

**"KENA" DIGITAL MICROSCOPE**

- ◆ 640 x 480 resolution
- ◆ Coaxial focusing - one knob
- ◆ Detachable head with camera
- ◆ 20x, 40x and 100x magnification
- ◆ USB 2.0 connection powered LED lighting on top, & 4 AA battery (not included) powered LED on bottom
- ◆ Applied Vision 4 software included - Windows & MAC
- ◆ One year warranty

**EduCam Compatible**



**Kena Digital Microscope**  
T-1050 Each . . . \$299.00

DIGITAL MICROSCOPY



**MOTICAM X**

*Turn your microscope into a wireless tablet ready, shareable device*

The Moticam X is an "All-in-One-Box" product. What makes the Moticam X a cut above the rest is that it is a high resolution streaming WiFi camera. By creating its own wireless network, simply log-on with your Android or iOS device and view, capture, edit live images from your microscope with the free App MotiConnect.

In a case where your school does not allow a download of Apps or you need to use it in a hurry, no problem, as the Moticam X is equipped with its own on-board software that can be controlled simply with a Web Browser which allows you to capture as well as measure. The Moticam X also works with a WiFi equipped laptop running Windows XP or higher, whereby the camera can be used with standard Motic Images Plus software, enabling you to use this device with your classroom's Interactive White Board.

- ◆ Sensor type: CMOS
- ◆ Sensor resolution: 1.3 MP
- ◆ WiFi Resolution: 1280 x 1024 pixels
- ◆ Limited warranty



MOTICAM X Each . . . \$349.00



Connects to most microscopes

**WiFi MICROSCOPES**



These new WiFi digital microscopes represent the latest in educational technology. Like the Moticam X (left), WiFi digital microscopes transmit their live images to iOS or Android tablets. These microscopes feature high-speed, full resolution imaging technology built into the units. Use them as conventional microscopes or share live images with your class using WiFi tablets or wireless laptops. High-speed, high resolution to fit most budgets.

**DCX-205-RLED**

- ◆ 10x widefield eyepiece
  - ◆ 30° monocular head
  - ◆ 4x, 10x, 40xR Achromatic objectives
  - ◆ Separate coarse and fine focus
  - ◆ Rechargeable LED light
  - ◆ Camera: CMOS
  - ◆ Resolution: 1.3 MP (1280 x 1024)
  - ◆ Android or iOS ready device required
  - ◆ Free MotiConnect app available
  - ◆ Optional downloadable software operates on Window XP or above and MAC OSX
  - ◆ 5 year limited warranty, 1 year limited camera warranty
- DCX-205-RLED Each . . \$509.00



**DCX-213-RLED**

- Same features as DCX-205-RLED **PLUS:**
- ◆ Low position Mechanical Stage
  - ◆ 4-hole objective turret
  - ◆ Coaxial coarse and fine focus
  - ◆ 1.25 N.A. Abbe condenser
  - ◆ Larger frame size
- DCX-213-RLED Each . . \$815.00

**DCX-214-RLED**

- Same as DCX-213-RLED **PLUS:**
- ◆ 100xR objective
- DCX-214-RLED Each . . \$885.00



**M3700 WiFi SERIES**



A built-in high-resolution streaming WiFi camera sets this microscope apart! By creating its own wireless network, simply log-on with your Android or iOS device and view, capture, edit live images from your microscope with the free app MotiConnect.

If your school doesn't allow the download of apps or you're in a hurry, no problem. The M3700 WiFi Series is equipped with its own on-board software that can be controlled simply with a web browser that allows you to capture as well as measure. The M3700 WiFi Series also works with a WiFi equipped laptop running Windows XP or higher, whereby the microscope can be used with standard Motic Images Plus software enabling you to use this device with your classroom's interactive white board.

**M3700 SERIES**

**Features:**

- ◆ 10x widefield eyepiece
- ◆ 30° monocular head
- ◆ Achromatic objectives
- ◆ Coaxial coarse and fine focus
- ◆ Built-in mechanical stage
- ◆ ABBE 1.25 condenser
- ◆ Rechargeable LED light
- ◆ Camera: CMOS
- ◆ Resolution: 1280 x 1024
- ◆ Android or iOS ready device required
- ◆ Free MotiConnect app available
- ◆ Optional downloadable software operates on Window XP or above and MAC OSX
- ◆ Limited warranty

Catalog #	Each	Objectives
M3702C-3DGLX	\$899.00	4x, 10x, 40xR
M3702C-4DGLX	\$965.00	4x, 10x, 40xR & 100xR

