

SafeTANK

GR5630-SB3

User Manual



v.1.0 (April, 2011)

About this Manual

Thank you for purchasing **RAIDON** products.

This manual will introduce the **RAIDON SafeTANK GR5630-SB3** and before using it, please read this manual thoroughly.

Although all information contained in this user manual has been carefully verified before publishing, however, the actual product specifications or relevant information may be found on **www.RAIDON.com.tw**. Products are subject to change without prior notifications. If you have any questions regarding the products of **RAIDON**, or you would like to know the latest product information, user manual update, or firmware update, please contact your local supplier or visit **www.RAIDON.com.tw** for further information.

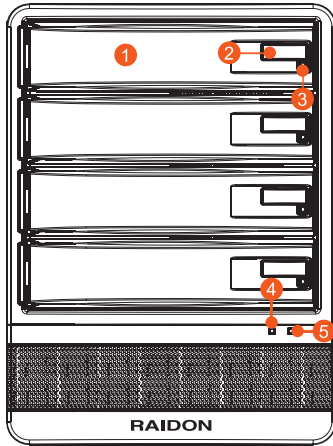
Copyright © RAIDON TECHNOLOGY, INC. All rights reserved.

Index

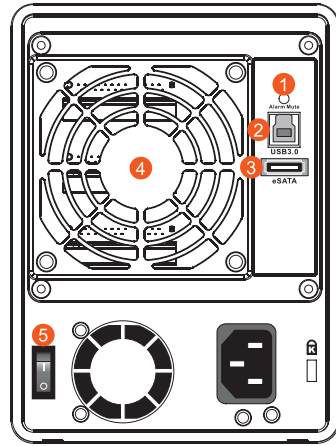
Chapter 1 Product Diagrams and Contents of Product Package.....	4
Chapter 2 Message Indication of LED and Buzzer.....	5
Chapter 3 Hardware Installation.....	5
Chapter 4 Install GR5630.....	6
Chapter 5 Precaution before Application.....	7
Chapter 6 GUI(Windows Only).....	7

Chapter 1 Product Diagrams and Contents of Product Package

Front view



Rear view



- 1 Tray Handle
- 4 Alarm LED
- 2 Button for Tray Clamp
- 5 Power LED
- 3 HD Status LED

- 1 Mute Button
- 4 Fan
- 2 USB3.0 Port
- 5 Power Switch
- 3 eSATA Port

After you open the outer package, make sure that the following items are contained in the package:

Contents of Product Package	
Item	Qty.
GR5630-SB3 Device	1
USB 3.0 Cable	1
eSATA Cable	1
AC Power Cable	1
Quick Installation Guide	1
CD(GUI)	1
Accessory Kit	1

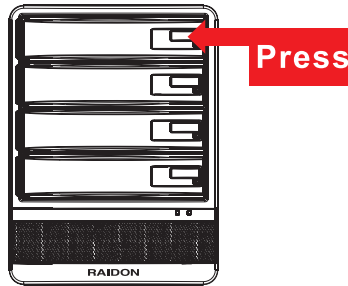
Please make sure that the related accessories and product body are not damaged or missing. If you have any question, please contact the local distributor or the retailer you purchase from for help.

Chapter 2 Message Indication of LED and Buzzer

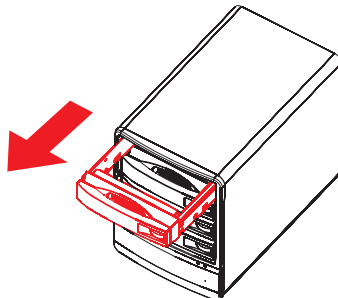
Status Description	Alarm LED	Power LED	HD Status LED	Buzzer
Power On	—	Blue light	Blue light	—
No Hard Drives	—	Blue light	—	—
Hard Drive Failure	Red light	Blue light	Red light	Sound
Rebuilding	—	Blue light	Source : Blue / Blink	—
			Target : Red / Blue Blink Alternatively	
Access	—	Blue light	Blue / Blink	—
Fan Failure (Stop working)	Red light	Blue light	—	Sound
Overheat (Over 55°C)	Red light	Blue light	—	Sound

Chapter 3 Hardware Installation

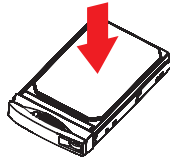
1. Press the eject button to release the hard drive clamp.



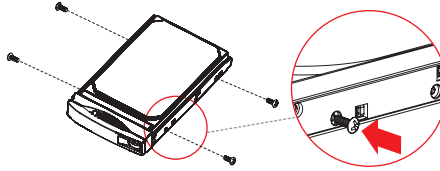
2. Horizontally pull out the hard drive tray.



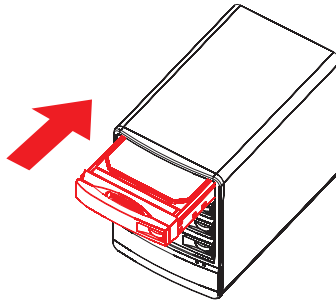
3. Install a 3.5" hard drive to the hard drive tray.



4. Secure installed hard drive with screws from the screw kit in 4 positions.



5. Insert the hard drive tray back into GR5630.



Chapter 4 Install GR5630

1. Please install 4 of brand new hard drives to each hard drive trays and properly insert them back into GR5630.
2. Choose one cable (USB or eSATA) to establish connection between PC and GR5630.
(Please DO NOT use both USB and eSATA cables at the same time.)
3. Connect AC cable and power on GR5630.
4. Modify RAID levels from your demand through the application software inside of package CD.
(Default Setting : JBOD, Recommendation : RAID 5)
5. After RAID level modification, disk volume can be formatted via disk managing tools, then GR5630 will be ready to use.
- 6 Install GR5630

Chapter 5 Precaution before Application

1. RAIDON strongly suggest to use 4 the same of brand new SATA hard drives for the optimal system performance.
2. Using used hard drive may cause the system fail to initialize properly. Please use low level format tools or file editors to clear existing data on the hard drives before installing them into GR5630.
3. Please DO NOT connect USB and eSATA cables at the time. To interchange connection between USB and eSATA, please switch off the power of GR5630 before changing the cables.
4. The GUI software from the CD can only be used under Windows system therefore desired RAID level must be configured before connecting GR5630 to Mac/Linux system, otherwise, only the default JBOD function will be available to these two operating systems.
5. While hot swapping any one of hard drive under JBOD function with USB connection, operating systems will automatically perform drive redetection, therefore, please ensure all of data accessing are not in progress before swapping hard drives, or, it may result in data damage from disconnection during operating system redetection.

Chapter 6 GUI(Windows Only)

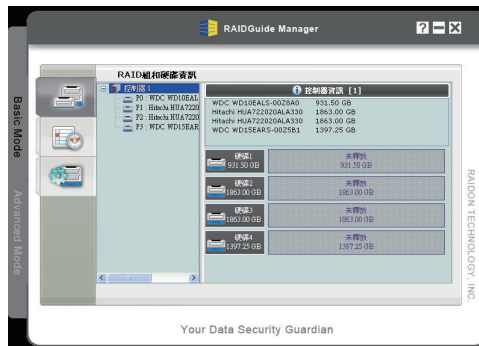
GUI Software “RAIDGuid” can be installed through the CD from the package for device status monitoring.

There will be two options as “Basic Mode” and “Advanced Mode” available after GUI software being initiated.

1. Basic Mode

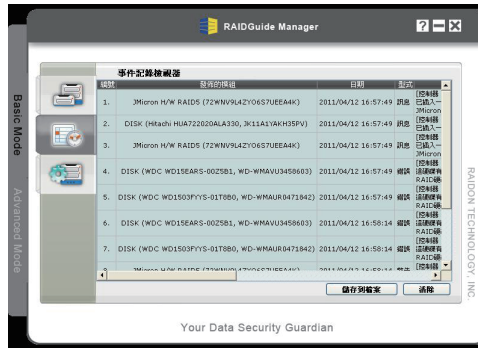
1) RAID and Disk Information

Indicates the number of HDD installed including details and RAID information.



2) Event Log Viewer

Indicates all information of every events occurred.



3) Basic RAID Configuration

You can reconfigure or delete the RAID mode from this interface. Also you may select the password option to prevent the RAID configuration being deleted by accident.

The password must be entered for deleting RAID configuration in the future.

GR5630-SB3 provides four RAID level applications. If you do not set the RAID mode, you will see four independent HDDs with JBOD function.

- RAID 0 => Available capacity based on the least capacity HDD multiplies the number of HDD installed.
- RAID 1 => Available capacity is equal to the least capacity HDD.
- LARGE => Available capacity is the total capacity of HDD installed.
- RAID 5 => Available capacity based on the least capacity HDD multiplies the number of 1 HDD subtracted from total HDD installed.

! Note : 1. RAID functions only apply when 2 or more HDDs are installed.

2. RAID 1 – Available when 2-3 HDDs are installed.
3. RAID 5 – Available when at least 3 HDDs are installed.



RAID Configuration

2. Advanced Mode

1) E-Mail Notification and Event settings

Configure the events for notification by send the related information to designated mailbox through email.



2) Advanced RAID Configuration

You can reconfigure or delete the RAID mode from this interface. Also you may select the password option to prevent the RAID configuration being deleted by accident.

The password must be entered for deleting RAID configuration in the future.



3) Firmware Information

Indicates existing firmware version and to execute firmware upgrades.

4) RAID Setting

You can set RAID timeout duration and priority of data auto-rebuild. When priority set towards "High", system performance will be emphasized on data auto-rebuild instead of data accessing throughput.



! Note : Arbitrary firmware upgrades may cause system malfunction. If your system is functioning normally, we strongly recommend not updating your firmware version. For any questions on firmware versions or upgrades, please contact technical service staff of RAIDON Technology Inc. or email us at: supporting@raidon.com.tw