



ENR 3200 – 32-channel network video recorder
 ENR 1600 – 16-channel network video recorder
 ENR 800 – 8-channel network video recorder

Features

- Management of up to 32 channels from Megapixel cameras, IP cameras and video servers
- Multi-brand IP product support
- Local and remote PTZ control
- Digital PTZ
- Bidirectional audio
- I/O control of IP-Video devices
- Multi-Language support
- Dual monitor support
- Integrated video analytics
- System and event log database
- Support for EKB-200 USB Joystick
- 3GPP live view support
- Easy installation with automatic camera search
- Counting function

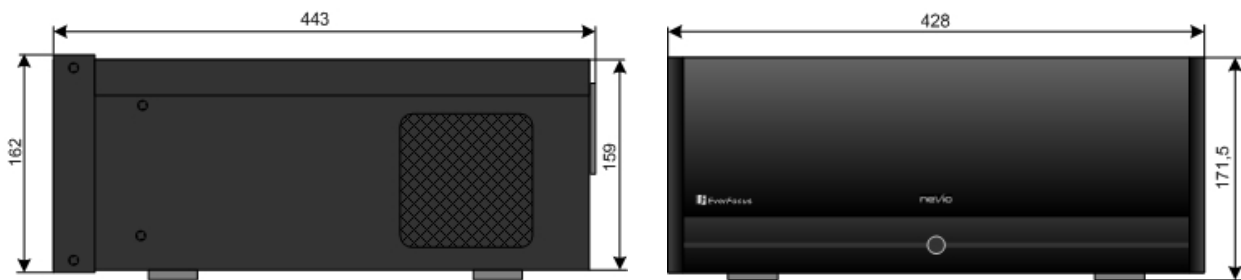


Technical data			
	ENR 3200	ENR 1600	ENR 800
Physical			
IP video channels	32	16	8
Recording / playback rate	Up to 25 IPS / channel		
Total recording rate	up to 400 IPS in 4CIF resolution, up to 800 IPS in CIF resolution (depending on camera type / compression settings/method), up to 85 MBit/s total input stream		
View modes	1/4/6/9/10/13/16/25/36	1/4/6/9/10/13/16	1/4/6/8
Recording resolution	Up to 1280 x 1024		
Compression method	H.264 / MJPEG / MPEG4		
Audio	Bidirectional transmission, 1 audio channel per video channel (depending on specification of IP device)		
Internal HDD	Up to 4 x 3,5" SATA recording HDD + 1 System HDD		
Video export	Internal DVD-RW drive, USB 2.0 interface		
Network interface	1.000 Mbit/s, RJ45, standards IEEE 802.3, IEEE 802.3u, IEEE 802.3ab, IEEE 802.3x		
Further interfaces	USB2.0 6 x, PS2 keyboard/mouse		
Alarm I/O	Support of I/O contacts of connected IP devices (depending on specification of IP device)		
Monitor output	1 x VGA out, 1 x VGA/DVI out, dual monitor operation possible; supported GUI resolutions: 1024x768, 1200x900, 1280x1024 and 1600x1200		
Power	110 ~ 230 V AC, 300 VA max.		
Ambient temperature	0°C ~ +40°C		
Housing	Steel, aluminium front, black		
Dimensions (WxHxD)	430 x 171,5 x 439,6 mm, 19", 4U, optional 19" mounting brackets available		
Weight	11 kg		
Functionality – General / System			
Menu language support	Danish, English, German, Finnish, French, Greek, Italian, Japanese, Korean, Portuguese, Russian, Slowakian, Spanish, Thai, Czech, Turkish, Hungarian, Chinese		
E-Map	Unlimited number of maps or other graphics with free placement of camera or I/O icons		
Counting function	For freely definable object sizes, counting of one or two directions		
Monitor output	GUI in 4:3 format; dual monitor support, second monitor can be used for additional live and/or playback view		
Bandwidth monitor	Optional OSD display of individual network bandwidth per camera and total streaming bandwidth		
Database management	Integrated database management tool for database reconstruction, repair and relocation as well as export option for configuration file		
Functionality – Live View			
Video analytics	General motion, missing object, camera occlusion, foreign object, lose focus, signal lost Each alarm can trigger up to 10 different event reactions		
PTZ	PTZ control in OSD or with EKB500 joystick for PTZ cameras Digital software PTZ for all cameras		

ENR_db_en_rev02

Functionality – Recording	
Recording methods	Continuous, schedule, event (motion / contact)
Schedule	Individual for each camera, daily schedule with 6 possible recording modes
Recording rates	1~25 IPS adjustable for each camera (depending on camera specification)
Functionality – Playback	
Multi-channel playback	Up to 16 channels time-synchronized
Search functions	Time/date via calendar and timebar; intelligent search with modes general motion, missing object, camera occlusion, foreign object, signal lost
Video enhancement	Saturation, contrast, brightness, sharpness
Video export	Snapshot in JPEG format, video export in AVI or ASF format
Video backup	Backup of multiple camera video data to local / network video drive or CD/DVD
Functionality – Remote Access	
Remote video access methods	Remote client software live view (up to 2 windows with up to 16x view each at 1 PC) , Remote client software playback view (up to 16x view) with remote backup function (multiple channel backup up to 16 channels) Webbrowser (live / playback with up to 16x view), 3G mobile phone client (rtsp streaming support required); Unlimited number of installations for all remote applications
Max. number of remote video channel access	128 video channels total
Remote maintenance	Remote desktop viewer allows complete network access to ENRxx NVR (1 monitor display only supported) including configuration

Dimensions



Delivery scope

- ENRxxx depending on ordered version
- PC keyboard
- PC mouse
- DVI-VGA adaptor
- CD-ROM with recovery software, remote software and documentation (software includes: remote live client, remote playback client, database maintenance tool, backup software)
- User manual

Accessories

BA RK01 – 19" mounting brackets

Material: aluminium handle, steel mounting plate
Dimensions handle (LxD): 115 x 40 mm
Dimensions (WxLxD): 24 x 135 x 95 mm
Colour: black
Weight: 200 g
Application: with ENR NVRs & EPC 4000 (support rail in rack required)

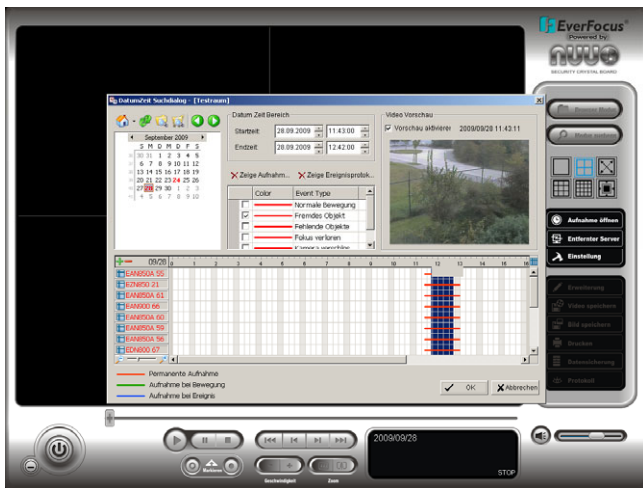


ENR_db_en_rev02

Screenshots



Dual monitor output with simultaneous live and playback view



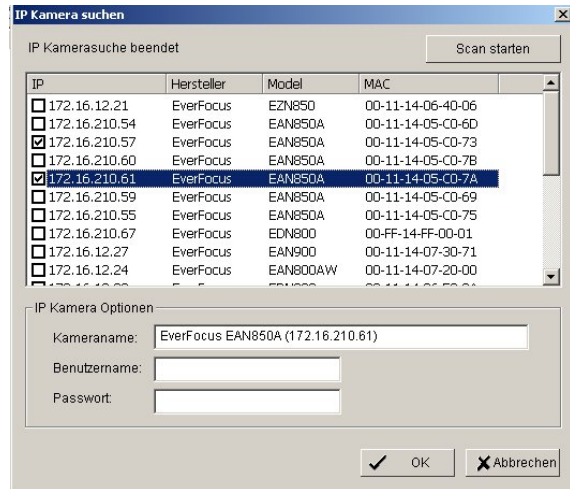
Intuitive playback search with preview window



Synchronised playback with up to 16 cameras



Intelligent search functions



Easy camera installation with automatic camera search

Product information

Supported IP Cameras / Videosever		Status: Version 3.1.4.7 / October 2009
Manufacturer	Supported Products	
EverFocus	EAN800A*; EAN800AW*; EAN850A*; EAN900*; EDN800*; EDN850*; EZN850*; EVS100; EVS400; EVS750	
ACTI	SED 2100; SED 2120; SED 2140; SED 2310; SED 2320; SED 2400; SED 2420; SED 2600; SED 2610; SEM 1110; CAM 5130; CAM 5140; CAM 5150; CAM 5200; CAM 5201; CAM 5221; CAM 5300; CAM 5301; CAM 5321; CAM 5500; CAM 6100; CAM 6200; CAM 6220; CAM 6500; CAM 6510; CAM 6520; CAM 6600; CAM 6610; CAM 6620; CAM 6630; CAM 7100; CAM 7120; CAM 7200; CAM 7220; CAM 7300; CAM 7301; CAM 7320; CAM 7321; CAM 7322; ACD 2100; ACD 2200; ACD 2300; ACD 2400; ACM 1011; ACM 1231; ACM 1311; ACM 1431; ACM 1432; ACM 3001; ACM 3211; ACM 3311; ACM 4100; ACM 4200; ACM 5001; ACM 5601, ACM 5611; ACM 5711; ACM 7411; ACM 8511; TCM 4301*; TCM 5311*	
Arecont	AV1300; AV1305*; AV2000; AV2100; AV2105*; AV2155*; AV3100; AV3105*; AV3130; AV5100; AV5105*; AV8180; AV8360;	
Atlantis Land	A02-OIPCAM1; A02-OIPCAM2; A02-OIPCAM3; A02-IPCAM5; A02-IPCAM6; A02-IPCAM7; A02-IPCAM8; A02-IPCAM9; A02-IPCAM10; A02-IPCAM11; A02-IPCAM12; A02-IPCAM13; A02-IPCAM14; A02-IPCAM15; A02-IPCAM16; A02-IPCAM17;	
Axis	205; 206; 206M; 206W; 207; 207W; 207MW; 209FD; 209FD-R; 209MFD; 209MFD-R; 210; 210A; 211; 211A; 211M; 211W; 212; 213; 214; 215; 216FD; 216FD-V; 216MFD; 216MFD-V; 221; 223M; 225FD; 231D; 231D+; 232D; 232D+; 233D; 240Q; 241Q; 241QA; 241S; 241SA; 242S; 243Q; 243SA; 247S; 2460; M1011*; M1011-W*; M1031-W*; p3301*; p3301V*; Q1755*; Q7401*; Q7406Blade*	
Cisco	PVC300	
D-Link	DCS-6620; DCS-6620G; DCS-5220; DCS-5300; DCS-5300G; DCS-2120; DCS-3420; DCS-3220; DCS-3220G; DCS-2100; DCS-2100G; DVS-104; DVS-301; DCS-900; DCS-G900; DCS-910; DCS-920; DCS-950; DCS-950G; DCS-3110; DCS-3410; DCS-3415; DCS-5220(TW); DCS-5610; DCS-6110; DCS-6111;	
Dynacolor	nZH06X; nZH10X; nZH21X	
Fine	TCP-690; TCP-690DN; TCP-HP930; WB-8211SD; WB-8411; CDV-3V930; TCP-690U; TCP-HP930U; WB-8211SDU; CDV-3V930U; EP-936; EP-908; EP-601; EP-201; EP-221; EP-221DN	
Hitron	HNCB-E1SN; HNG-E1SAW0S4; HWD125MN; HECMC4V0C4	
IcanTek	ICanView220; ICanView222; ICanView230; ICanView232; ICanView240; ICanView250; ICanView260; ICanView270; ICanView280; ICanView290; ICanserver510;	
IQinVision	IQeye301; IQeye301m; IQeye301w; IQeye302; IQeye302w; IQeye303; IQeye303w; IQeye501; IQeye510; IQeye511; IQeye601; IQeye602; IQeye603; IQeye701; IQeye702; IQeye703; IQeye705; IQeye751; IQeye752; IQeye753; IQeye755	
JVC	VN-C20U; VN-E4(U); VN-C205U; VN-C215U; VN-C655U;	
LevelOne	FCS-0010; FCS-0020; FCS-1010; FCS-1030 V1.0; FCS-1030 V2.0; FCS-1040; FCS-1050; FCS-1060; FCS-1070; FCS-1081; FCS-1081A; FCS-1091; FCS-1101; FCS-3000; FCS-3021; FCS-4010; FCS-5011; FCS-5030; FCS-7011; WCS-0010; WCS-0020; WCS-1090; WCS-2060; WCS-2010 V1.0; WCS-2010 V2.0; WCS-2030 V1.0; WCS-2030 V2.0; WCS-2030 V3.0; WCS-2040; WCS-2070	
Linksys	PVC2300; WVC2300; WVC210	
Lorex	LNE3003	
Lumenera	le045c; le045c-dn; le075c; le075c-dn; le165c; le165c-dn; le175c; le175c-dn; le259c; le275c; le275c-dn; le375c; le375c-dn; le11059c; Li165C-OV3	
Mobotix	M10D-Night; M12D-Sec; M12D-IT-DNIGHT; M12D-Sec-Dnight; M12D-Web; M22M-IT; M22M-Sec; M22M-Sec-Night; D12Di-IT; D12Di-Sec; D22M-IT-Night; M12D-SEC-Dnight-D43N43; Q22M-SEC-D11	
Moxa	Vport 25; Vport 251; Vport 254; Vport 351	
Panasonic	BB-HCM311; BB-HCM331; BB-HCM371; BB-HCM381; BB-HCM403; BB-HCE481; BB-HCS301; BB-HCM511; BB-HCM515; BB-HCM527; BB-HCM531; BB-HCM581; BL-C10; BL-C1; BL-C20; BL-C30; BL-C111; BL-C131; KX-HCM110; KX-HCM280A; WJ-NT304; WJ-NT314; WV-NP1000; WV-NP1004; WV-NM100; WV-NP240; WV-NP244; WV-NS202; WV-NW484; WV-NS954; WV-NS950; WV-NW964; WV-NW484S	
Pixord	100; 120/126/128; 200/206; 201; 205; 207; 240; 241; 261; 262; 263; 300; 400/42X; 461; 463; 1000; 1401; 2000; 4000; 405; 410; 405M; 411/412	
Planet	ICA-510; ICA-700; ICA-151W; ICA-151; ICA-750; ICA-107W; ICA-107P; ICA-107; ICA-108; ICA-108W; ICA-120; ICA-230; ICA-230W; ICA-230P; ICA-M230; ICA-310; ICA-310W; ICA-312; ICA-312v2; ICA-350; ICA-350-V2; ICA-501; ICA-525; ICA-530; ICA-651; ICA-601; IVS-110	
Probe	IP fixed camera, IP PTZ camera	
Samsung Electronics	C6475	
Seorim	SVC-3030/41NR-DN; SVG-3110; SVG-3410; SVD-3020-PT Z; SVD-3020;	
Sony	SNC-CS3; SNC-Z20; SNC-RZ30; SNC-CS10; SNC-CS11; SNC-DF40; SNC-DF70; SNC-P1; SNC-P5; SNC-RZ25; SNC-CS50; SNC-DF50*; SNC-DF80*; SNC-RX530*; SNC-RX550*; SNC-RX570*; SNC-RZ50; SNT-V704; SNC-CM120; SNC-DM110; SNC-DM160; SNC-CS20; SNC-DS10; SNC-DS60	
Toshiba	IK-WB02A; IK-WR01A; IK-WB21A; IK-WB15A	
Truen	TCS-200	

ENR_db_en_rev02

Product information

Vivotek	VS 2101; VS 2401; VS 2402; VS 2403; VS 3100; VS 3101; VS 3102; VS 3102-XLTH; VS 7100; SD7151; FD 61x2; FD 61x1; FD7131; FD7132; FD7141; SD 61x2; TC 5330; TC 5331; TC 5630; TC 5631; IP 21x1; IP 21x2; IP 31x1; IP 31x2; IP 31x7; IP 31x1 TLFN; IP 3132; IP 3133; IP 3135; IP 3136; IP 3137; IP 3135-PLNX; IP 3136-PLNX; IP 51x2; IP 51x4; IP 61x2; IP 61x4; IP 61x7; IP 6114; IP 6124; IP 71x7; IP 7131; IP 7132; IP 7133; IP 7134; IP 7135; IP 7137; IP 7138; IP 7139; IP 7142; IP 7151; IP 7152; IP 7161; IP 7251; IP 7330; IZ7151; PT 31x2; PT 31x3; PT 31x4; PT 31x7; PT 3134; PT 7000; PT 7135; PT 7137; PZ 61x2; PZ 61x4; PZ7111; PZ7151; PZ7152
Y-CAM	Black; White
ZAVIO	D510E; D520E; D610A; D611E; F210A; F312A; F510E; F510W; F511E; F511W; F520E; F521E; F610A; F611E; F721A; F731E; M510E; M510W; M511E; M511W; V111T

* incl. H.264 Compression Format

Ordering information	
ENR 3200 / 1 / 1000	32-channel network video recorder, management of multi-brand Megapixel / IP cameras and video servers, 1 TB internal storage , 110 ~ 230 V AC
ENR 3200 / 2 / 1000	32-channel network video recorder, management of multi-brand Megapixel / IP cameras and video servers, 2 TB internal storage , 110 ~ 230 V AC
ENR 3200 / 3 / 1000	32-channel network video recorder, management of multi-brand Megapixel / IP cameras and video servers, 3 TB internal storage , 110 ~ 230 V AC
ENR 3200 / 4 / 1000	32-channel network video recorder, management of multi-brand Megapixel / IP cameras and video servers, 4 TB internal storage , 110 ~ 230 V AC
ENR 1600 / 1 / 1000	16-channel network video recorder, management of multi-brand Megapixel / IP cameras and video servers, 1 TB internal storage , 110 ~ 230 V AC
ENR 1600 / 2 / 1000	16-channel network video recorder, management of multi-brand Megapixel / IP cameras and video servers, 2 TB internal storage , 110 ~ 230 V AC
ENR 1600 / 3 / 1000	16-channel network video recorder, management of multi-brand Megapixel / IP cameras and video servers, 3 TB internal storage , 110 ~ 230 V AC
ENR 1600 / 4 / 1000	16-channel network video recorder, management of multi-brand Megapixel / IP cameras and video servers, 4 TB internal storage , 110 ~ 230 V AC
ENR 800 / 1 / 1000	8-channel network video recorder, management of multi-brand Megapixel / IP cameras and video servers, 1 TB internal storage , 110 ~ 230 V AC
ENR 800 / 2 / 1000	8-channel network video recorder, management of multi-brand Megapixel / IP cameras and video servers, 2 TB internal storage , 110 ~ 230 V AC
ENR 800 / 3 / 1000	8-channel network video recorder, management of multi-brand Megapixel / IP cameras and video servers, 3 TB internal storage , 110 ~ 230 V AC
ENR 800 / 4 / 1000	8-channel network video recorder, management of multi-brand Megapixel / IP cameras and video servers, 4 TB internal storage , 110 ~ 230 V AC
ENR-U8	Upgrade kit for 8 additional recording channels, upgrade from ENR 800 / 1600*
ENR-U16	Upgrade kit for 16 additional recording channels, upgrade from ENR 800 / 1600*
BA RK 01	19" mounting brackets, set of 2 pcs., aluminium/steel, dimensions (WxLxD): 24 x 135 x 95 mm

* An upgrade to more than 32 channels might lead to considerable performance losses. Therefore, we recommend upgrades only to max. 32 channels per system!

ENR_db_en_rev02