



# TITAN<sup>®</sup>

## RENTAL INDUSTRY CATALOG

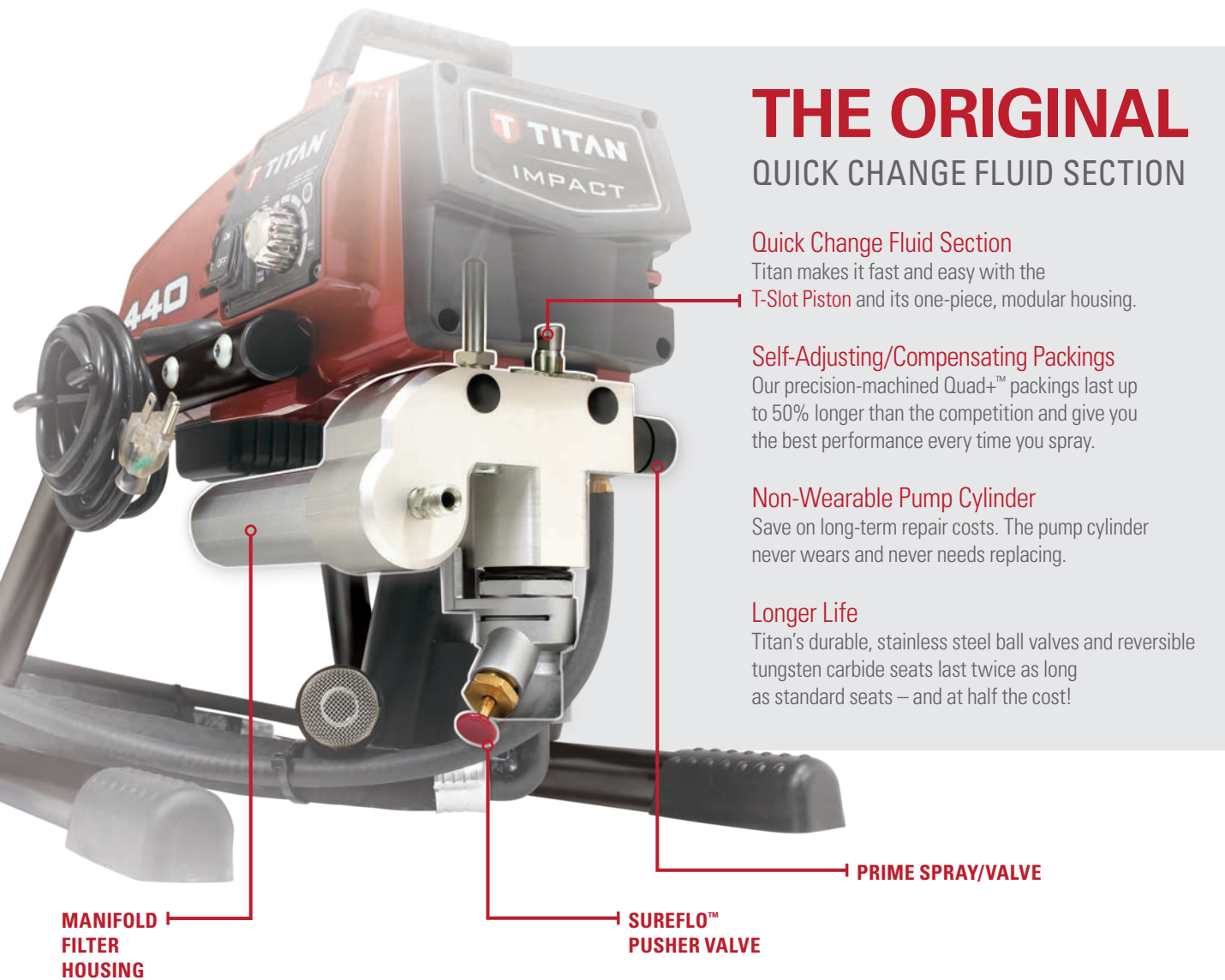


SPRAYING **REDEFINED**



# BUILT FOR RENTAL

TITAN SPRAYERS ARE THE #1 ANSWER FOR THE DEMANDS OF THE RENTAL INDUSTRY.



## THE ORIGINAL QUICK CHANGE FLUID SECTION

**Quick Change Fluid Section**  
Titan makes it fast and easy with the T-Slot Piston and its one-piece, modular housing.

**Self-Adjusting/Compensating Packings**  
Our precision-machined Quad+™ packings last up to 50% longer than the competition and give you the best performance every time you spray.

**Non-Wearable Pump Cylinder**  
Save on long-term repair costs. The pump cylinder never wears and never needs replacing.

**Longer Life**  
Titan's durable, stainless steel ball valves and reversible tungsten carbide seats last twice as long as standard seats – and at half the cost!

We provide an experienced technical service department to assist with service issues along with an express parts program to ensure your Titan equipment is always available for your customers.

### THE RENTAL INDUSTRY'S BEST AND LONGEST WARRANTY

Our sprayers are built to last. We are so confident that our sprayers will hold up to the most difficult jobs that we offer the best and longest warranty in the industry.

### LIMITED LIFETIME MOTOR WARRANTY

If the motor fails for any reason (including wear) for as long as you own the sprayer, we will replace the motor at no cost to you.

### 2-YEAR MANUFACTURER'S DEFECTS

We pledge that our sprayers are free from defects in materials and workmanship. This excludes normal wear items and consumables such as filters, piston, packings, tips, etc.

### EXPRESS PARTS PROGRAM

- The most common repair parts are guaranteed to be in stock 100% of the time.
- If for any reason you or your preferred Authorized Service Center is out of stock, free 2nd day air is available when ordered by 3:00 pm (EST)

For more information about the industry's leading warranty, please call Titan's Technical Service Department at 1-800-526-5362.

## Impact® 410 & 440

### DESIGNED FOR THE RENTAL INDUSTRY

When it comes to getting powerful performance at an affordable price, nothing comes close to the Impact 410. Perfectly suited for residential, property maintenance and small commercial applications, the Impact 410 applies all lacquers, stains, standard primers, paints and architectural coatings with ease.

The Impact 440 sets the standard for the rental industry with ease of use, straightforward maintenance and the power to spray tough coatings. The Impact 440 is designed to spray 50-75 gallons per week and is built to apply coatings for residential, municipal, property maintenance and small commercial applications.



Impact® 440 High Rider



Impact® 440 Low Rider

	Impact 410	Impact 440
<b>SPECIFICATIONS</b>		
Max. Delivery	0.47 GPM	0.54 GPM
Max. Tip Size (1-Gun)	0.023"	0.023"
Max. Operating Pressure	3100 PSI	3300 PSI
Motor	3/4 HP DCX Motor	7/8 HP, DCX Motor
<b>WEIGHT</b>		
Skid	34 lbs.	36 lbs.
High Rider	55 lbs.	65 lbs.
Low Rider	---	57 lbs.
<b>CONFIGURATIONS</b>		
	<b>PART NO.</b>	
Skid	532052	805-000
High Rider	532053	805-016
Low Rider	---	805-019



Impact® 410 High Rider

## ELECTRIC AIRLESS

### Features:

**Sureflo™ Pusher Valve**  
Primes the first time, every time. (440 Skid)

**Electronic Pressure Control with Rapid Clean**  
Faster flushing and clean-up. (440 Skid)

**Quad+ Packings™ / Permalife™ Cylinder**  
No wearable cylinder and self-adjusting/self compensating packings deliver the longest life and lowest repair costs in the industry. (440 Skid)

**All-metal Construction**  
With stainless steel piston rod and balls

**Manifold Filter**  
Filter cleans paint, preventing abrasives from reaching the gun tip. (410 Skid)

**Large Manifold Filter**  
Filter handles more paint, preventing abrasives from reaching the gun tip, giving a better rental experience. (440 Skid)

**AutoOiler™**  
Deliver oil to the packings with the push of a button. (440 Skid only)

**Extra Deep Holster**  
Keeps the painting area cleaner. (440 Skid only)

### Spare Fluid Section:

**Impact 440/540/640 Skid and Low Rider**  
805-207A

**Impact 440/540/640 High Rider**  
805-233A



The Impact 440 comes with RX-80 Gun, 517 TR1 Reversible Tip and 1/4" x 50' Airless Hose.

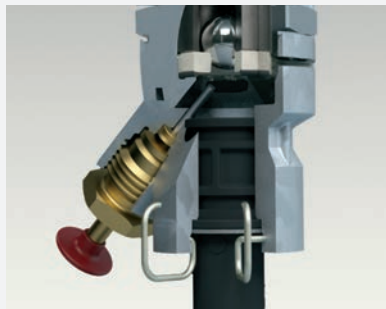
Features:

**DuraLife™ Brushless HE Motor**

Optimized for every tip size and every painter's technique.

**Sureflo™ Pusher Valve**

Primes the first time, every time.



**Electronic Pressure Control with Rapid Clean**

Faster flushing and clean-up.

**Quad+ Packings™ / Permalife™ Cylinder**

No wearable cylinder and self-adjusting/self compensating packings deliver the longest life and lowest repair costs in the industry.

**Large Manifold Filter**

Filter handles more paint, preventing abrasives from reaching the gun tip, giving a better rental experience.

**AutoOiler™**

Deliver oil to the packings with the push of a button.

**Extra Deep Holster**

Keeps the painting area cleaner. (Skid only)



The Impact 540 & 640 comes with RX-Pro Gun, 517 TR® Reversible Tip and 1/4" x 50' Airless Hose.

Impact® 540 & 640

**RECOMMENDED FOR SMALL AND MEDIUM RESIDENTIAL AND COMMERCIAL PROJECTS**

The Impact 540 is a step-up performer designed to spray 75-100 gallons per week and is built to apply coatings for residential, municipal, property maintenance and small commercial applications.



	Impact 540	Impact 640
<b>SPECIFICATIONS</b>		
Max. Delivery	0.60 GPM	0.70 GPM
Max. Tip Size (1-Gun)	0.024"	0.027"
Max. Tip Size (2-Guns)	----	0.017"
Max. Operating Pressure	3300 PSI	3300 PSI
Motor	1.20 HP Brushless DC	1.55 HP Brushless DC
<b>WEIGHT</b>		
Skid	42 lbs.	42 lbs.
High Rider	64 lbs.	64 lbs.
Low Rider	76 lbs.	69 lbs.
<b>CONFIGURATIONS</b>		
	<b>PART NO.</b>	<b>PART NO.</b>
Skid	805-001	805-002
High Rider	805-006	805-004
Low Rider	805-003	805-005

Impact® 840

**RECOMMENDED FOR MEDIUM & LARGE RESIDENTIAL, COMMERCIAL AND INDUSTRIAL PROJECTS**

The Impact 840 provides 2 gun performance for contractor customers that need a high output system. The Impact 840 is designed to spray 100-300 gallons per week and is built to apply coatings for residential, municipal, property maintenance and commercial applications.



	Impact 840
<b>SPECIFICATIONS</b>	
Max. Delivery	1.00 GPM
Max. Tip Size (1-Gun)	0.032"
Max. Tip Size (2-Guns)	0.021"
Max. Operating Pressure	3300 PSI
Motor	2.30 HP Brushless DC
<b>WEIGHT</b>	
High Rider	99 lbs.
Low Rider	85 lbs.
<b>CONFIGURATIONS</b>	
	<b>PART NO.</b>
High Rider	805-009
Low Rider	805-010



Impact 840 Low Rider

Features:

**DigiTrac™ Integrated Digital Display**

Includes anti-theft lock to protect your investment.

- Advanced diagnostics
- Pressure reading
- Resettable gallon and run time counter

**DuraLife™ Brushless HE Motor**

Optimized for every tip size and every painter's technique.

**Sureflo™ Pusher Valve**

Primes the first time, every time.

**Electronic Pressure Control with Rapid Clean**

Faster flushing and clean-up.

**Quad+ Packings™ / Permalife™ Cylinder**

No wearable cylinder and self-adjusting/self compensating packings deliver the longest life and lowest repair costs in the industry.

**Large Manifold Filter**

Filter handles more paint, preventing abrasives from reaching the gun tip, giving a better rental experience.

**AutoOiler™**

Deliver oil to the packings with the push of a button.

**Extra Deep Holster**

Keeps the painting area cleaner. (Skid only)



The Impact 840 comes with RX-Pro Gun, 517 TR® Reversible Tip and 1/4" x 50' Airless Hose.

**Features:**

**PermaStroke™ Technology**

- ▶ No piston or packings, cylinder or clutch to wear or burn out
- ▶ Delivers top performance at pressures from 300 to 3300 PSI when using small or large tips

**Field Serviceable**

- ▶ The cartridge style inlet and outlet valves change out in minutes

**Sureflo™ Pusher Valve**

- ▶ Unstick the lower ball valve with the push of a button. No need for a hammer.

**Multi-position Cart**

- ▶ Allows for a low rider siphon or high rider direct immersion set-up

**Field Serviceable**

- ▶ With only two cartridge-style wear parts that change in only 5 minutes

**Telescoping Handle**

**Large Semi-pneumatic Tires**

**Elite® 3000**

**RECOMMENDED FOR SMALL & MEDIUM RESIDENTIAL AND COMMERCIAL PROJECTS**

Perfect for everyday use on residential, property maintenance and small commercial applications applying most architectural coatings like stains, lacquers, sealers, enamels, primers, latex house paints, and dryfall with ease.



**MULTI-POSITION CART**

- ▶ High Rider with rigid suction set
- ▶ Low Rider with flexible suction set
- ▶ Low Rider with hopper accessory (hopper sold separately)



Elite 3000	
SPECIFICATIONS	
Max. Delivery	0.60 GPM
Max. Operating Pressure	3300 PSI
Max. Tip Size (1-Gun)	0.025"
Weight	103 lbs
Motor	1.2 HP DCX
CONFIGURATIONS	PART NO.
Elite 3000	2402333



▶ The Elite 3000 comes with RX-Pro Gun, 517 TR<sup>1</sup> Reversible Tip and 1/4" x 50' Airless Hose.

**Capspray™ Series**

**DESIGNED FOR FINE FINISHING PROJECTS**

High-end woodworking, cabinetry and furniture finishing projects require the high transfer efficiency that only Titan Capspray can deliver. These lightweight, portable HVLP sprayers will apply all fine finishes with speed and precision – maximizing both productivity and profit.

**Capspray 95**

The Capspray 95 is a powerful and versatile turbine unit, spraying a wide range of coatings. Sprays stain to finish quality latex. Rugged, portable and dependable as you would expect.



**Capspray 105**

With the Capspray 105 you can spray hard to atomize coatings with little to no thinning and increased production rates. The Capspray 105 will spray a wide range of coatings, including latex and other water based coatings.



**Capspray 115**

This revolutionary, 6-stage portable turbine spraying system is the only turbine ever to achieve full HVLP capability. It combines quiet operation and high air cap pressure for the finest atomization possible. Capspray 115 will apply nearly all fine finish coatings with little to no reduction.



	Capspray 95	Capspray 105	Capspray 115
<b>SPECIFICATIONS</b>			
Air Pressure	9.5 PSI	10.5 PSI	11.50 PSI
Turbine	4-Stage Tangential	5-Stage Tangential	2-Speed, 6-Stage Tangential
Hose Length	30'	30' and 5' Whip	30' and 5' Whip
Weight	21 lbs.	22 lbs.	23 lbs
Needle Nozzle Set (Included)		#4	#4 & #5
<b>CONFIGURATIONS</b>			
	<b>PART NO.</b>	<b>PART NO.</b>	<b>PART NO.</b>
With Maxum II Gun	0524032	0524098	0524099
With Maxum Elite Gun	----	0524033	0524034*

\*includes Gravity Cup Accessory

**Features:**

**Five-stage Turbine (Capspray 105)**

Atomizes coatings with little or no thinning.

**Six-stage Turbine (Capspray 115)**

- ▶ Two-speed switch
- ▶ Atomize coatings with little or no thinning

**Powerful Atomization**

Atomizes coatings with little or no thinning.

**High Transfer Efficiency**

Ranges up to 90%.

**Dual Air Filtration**

An automotive type air filter on the atomizing air side (Available on 95, 105 and 115 models)

**Pre-Filter**

On both atomizing air and cooling air sides.

**Built-In Toolbox**

For needles, nozzles, air caps and nozzle wrench.

**Built-In Cup Holder**

For added storage a portability.

**Dirty Filter Warning Light**

Extend the life of your turbine and maintain maximum performance with clean filters.

**Sound Reduction Technology**

Lowers the decibel level on the jobsite (Capspray 115)



▶ The Capspray 105 & 115 come with a 30' air hose, 5' whip hose, #3, #4 & #5 Pro Sets and the Maxum II or Maxum Elite gun

**Features:**

**HydraStroke™ Technology**

Optimized with one moving part reducing heat and extending life

**Severe Service™ Fluid Section**

Easy to remove and replace fluid section in the field

**Active Cooling Tank**

Maximizes Airflow to actively cool the system.

**Large 12" Pneumatic Tires**

Easily move around on the jobsite

**Front Mounted Motor Pump Assembly**

Easy to access for maintenance and service.

**Built-in Lift Handles**

For easy loading and unloading.

**5 Gallon Bucket Holder**

**PowrBeast™ 4700**

**RECOMMENDED FOR LARGE RESIDENTIAL, COMMERCIAL OR INDUSTRIAL JOBS**

Introducing the PowrBeast heavy duty gas powered direct immersion sprayer. Power meets durability. Spray 100-200 gallons per week using most architectural and industrial coatings with this high performance, gas-powered airless sprayer.



■ PowrBeast 4700 Gas comes complete with RX-Pro Gun, 517 TR¹ Reversible Tip and 1/4" x 50' Airless Hose.

PowrBeast 4700 Gas	
SPECIFICATIONS	
Max. Delivery	1.60 GPM
Max. Tip Size (1-Gun)	0.041"
Max. Tip Size (2-Gun)	0.029"
Max. Tip Size (3-Gun)	0.021"
Max. Tip Size (4-Gun)	0.019"
Max. Operating Pressure	3300 PSI
Engine	Honda® GX160
Weight	173 lbs.
CONFIGURATIONS	
PART NO.	
With Gas Engine	0537001

**Features:**

**Slow-Stroking Hydraulic Piston**

Maximizes the life of the fluid section.

**Accurate Pressure Control**

Ranges from 400 to 3300 PSI. Spray low viscosity primers to heavy-bodied finish paints.

**Durable**

Longest stroking portable sprayer in the market.

**Easy-Remove Filter**

Only 3 turns to remove.



**Convertible**

Easy, tool-free convertibility for projects where gas engines are not permitted.

2.0 HP Electric Converto Kit (506-719) sold separately.

**PowrTwin® 4900 Plus**

**RECOMMENDED FOR LARGE JOBS WHERE A FLEXIBLE POWER SOURCE IS NECESSARY**

Designed and built for contractors who are serious about completing large scale painting projects quickly and profitably. The PowrTwin 4900 Plus is ideal for professionals who want the slow-stroking power and long-term durability only Titan hydraulic piston sprayers offer.



■ PowrTwin 4900 Plus comes complete with RX-Pro Gun, 517 TR¹ Reversible Tip and 1/4" x 50' Airless Hose.

4900 Plus	
SPECIFICATIONS	
Max. Delivery - Gas	1.50 GPM
Max. Delivery - Electric	1.10 GPM
Max. Tip Size (1-Gun) - Gas	0.038"
Max. Tip Size (2-Guns) - Gas	0.028"
Max. Tip Size (1-Gun) - Electric	0.031"
Max. Tip Size (2-Guns) - Electric	0.023"
Max. Operating Pressure	3300 PSI
Engine	Honda GX160
CONFIGURATIONS	
PART NO.	
With Gas Engine	0290012

**PowrLiner™ 3500**

**RECOMMENDED FOR MEDIUM-SIZED PROJECTS ON ALL PARKING LOTS AND ATHLETIC FIELDS**

The revolutionary PowrLiner 3500, built with technology that delivers a best in class line with sharp and consistent line quality on even the toughest surfaces. It's the perfect intermediate line striper for Rental companies that need a maneuverable line striper for projects where the big machines just aren't profitable to operate.



■ PowrLiner 3500 includes RX-80 Gun, Premium TR¹ Line Striping Tip and 1/4" x 50' Airless Hose.

PowrLiner 3500	
SPECIFICATIONS	
Max. Delivery - Gas	0.75 GPM
Max. Tip Size (1-Gun)	0.027"
Max. Operating Pressure	3300 PSI
Engine - Gas	Honda GX120
Part No.	0537015

**PowrLiner 2850**

**RECOMMENDED FOR MEDIUM-SIZED PROJECTS ON ALL PARKING LOTS AND ATHLETIC FIELDS.**

The PowrLiner 2850 is designed to withstand the rigors of steady, everyday use on pavement, fields and turf. It's the perfect intermediate line striper for contractors who need a maneuverable, entry level two-gun striper.



■ PowrLiner 2850 includes RX-80 spray gun with in-handle filter and premium TR¹ line striping tip.

PowrLiner 2850	
SPECIFICATIONS	
Max. Delivery - Gas	0.92 GPM
Max. Tip Size (2-Gun)	0.019"
Max. Operating Pressure	3300 PSI
Engine - Gas	Honda GX120 with Low Oil Alert
Part No.	029009H

**PowrLiner 4955**

**RECOMMENDED FOR FULL-TIME DUTY ON PARKING LOTS AND ATHLETIC FIELDS.**

Designed and built for contractors who are serious about completing medium to large scale striping projects quickly and profitably. PowrLiner 4955 is the first step in hydraulic stripers where power and long-term, heavy duty operation are the difference between a business that makes money and one that does not.



■ PowrLiner 4955 includes S-3 Stainless Steel spray gun with premium TR¹ line striping tip.

PowrLiner 4955	
SPECIFICATIONS	
Max. Delivery - Gas	1.25 GPM
Max Delivery - Electric	1.10 GPM
Max. Tip Size (1-Gun)	0.033"
Max. Tip Size (2-Gun)	0.025"
Max. Operating Pressure	3300 PSI
Engine - Gas	Honda GX120 with Pull Start
Part No.	0290052H

**Features:**

**PermaStroke Technology™**

One piece inlet and outlet valve

**FlatLine Pulsation Dampener™**

Eliminates pressure fluctuations and deadband in the system

**Sureflo™ Pusher Valve**

Makes priming easy

**Large 16" Pneumatic tires**

For increased portability and travel over rough surfaces

**Features:**

**Versatile Gun Bracket**

Position gun to spray on left, right, front or rear of striper.

**Easy Maneuverability**

Makes tight turns and stenciling fast and easy.

**Front Swivel Caster**

Tracks straight and unlocks for easier maneuvering.

**Adjustable Handles**

Telescoping handles for added comfort.

**Removable Gun**

For full stenciling capability.

**Features:**

**SmartArm™**

Can be positioned to spray on left, right, front or rear of striper.

**Precise Pressure Control**

From 400 to 3300 PSI, for spraying light-bodied coatings all the way up to low-VOC striping paints.

**Heavy-Duty Frame**

Epoxy-finished frame resists harsh solvents and corrosion.

**Reversible Gun Mount**

Stripe off either front or rear tire.

**Removable Gun**

For full stenciling capability.

**Pneumatic Tires**

For shock absorption.

**12-Gallon Paint Hopper**



### FlexSpray™ HandHeld

FlexSpray puts the power of airless and the control of HVLP into one versatile sprayer creating the first multi-tool for painting professionals. FlexSpray's advanced technology was developed for professionals who spray a variety of coatings with multiple applications. Just pull the trigger and your interior, exterior or fine finishing project will finish with ease.

#### Features:

**10x The Life of A Handheld Airless Sprayer**

**Adjustable Spray Pattern**

Horizontal to Vertical

**Pattern Width Control**

Adjustable from Wide to Narrow

**Air Flow Control**

**Material Flow Control**

**Replaceable Air Filter**

**2-Stage Trigger**

FlexSpray HandHeld	
SPECIFICATIONS	
Max. Delivery	0.20 GPM
Cup	1 Qt. Stainless Steel
Power	120 Voltz, 60 Hz
Weight	4.3 lbs
CONFIGURATION	PART NO.
FlexSpray HandHeld	0524093
FlexFinish Front End	0529009
FineFinish Front End	0529008



### SteamMaster LMB150

The Titan SteamMaster is the fastest and easiest way to remove all types of wall coverings. It features a 2-gallon capacity tank as well as on-board storage facilities. Ideal for wallpaper, even multiple layers as well as popcorn ceilings and textured coatings. Built to last take the tough use of professional and rental use.

#### Features:

**2 Gallon Capacity**

So you can work longer and with fewer refills

**Built-In Step**

Allows user to reach the average ceiling height without the need for a step ladder.

**On-Board Storage**

For 16' cord set, 16' cool run hose and large and small steam plates.

**Water Level Indicator**

**Swivel Connection on Steam Plate**

To avoid hose kinks

SteamMaster LMB150	
SPECIFICATIONS	
Capacity	2 Gal.
Power	120 Volts (1500 Watts)
Weight	19 lbs.
CONFIGURATIONS	PART NO.
With Gas Engine	0LMB150NA



### Pro V55 Heat Tool

The Pro V55 heat gun has a wide temperature range and variable fan settings to give the user flexibility to use it for a variety of applications including stripping paint, drying paint and spackle, heating shrink tubes, bending pipes and so much more.

#### Features:

**Wide Temperature Range**

120°F–1200°F with 55 settings

**LCD Push-button Control**

For precise temperature and fan settings

**Dual Ceramic Heating Element**

Enhances durability and provides even, consistent heating

**Ergonomic, Soft Grip**

For added comfort and control

**5 Fan Settings**

For variable airflow

**Integrated Stand**

For hands-free operation

Pro V55 Heat Tool	
CONFIGURATION	PART NO.
Temperature Range	120°F – 1200°F 50°C – 650°C
Power	1500 Watts / 5100 BTU
Pro V55 Heat Tool Kit	0503067



RX-Pro



RX-80



SC-6+ Reversible Tip



Hose Wrap (hose not included)



Pump Runner

### RentSpray Accessory Kit

766-900

This kit includes tips, guards, seals and more.

### Airless Guns and Kits

DESCRIPTION	PART NO.
RX-Pro Airless Gun with SC6+ Tip	0538021
RX-Pro Gun, Hose and Tip Kit*	0538023
RX-80 Airless Gun with SC6+ Tip and 2-Finger Trigger	0538008
RX-80 Gun, Hose & Tip Kit with SC6+ Tip	0538011

\*Includes additional a 3' whip hose.

### Airless Tips

DESCRIPTION	PART NO.
SC-6+ Airless Tip	662-XXX
SC-6+ RentSpray Bulk Tip (Minimum order of 5)	767-XXXT
TR <sup>1</sup> Line Striping Tip (White)	697-XXX
TR <sup>2</sup> Line Striping Tip (Yellow)	694-XXXXXXX
TR <sup>1</sup> HEA Airless Tip (Green)	330-XXX
Reversible Tip Guard	0289228
SC-6 Seal/Retainer Kit (5-pack)	661-020
HEA Gauge Assembly	580495

\*X's represent the specific tip size number.

### Reach Tools

DESCRIPTION	PART NO.
6" Gun Extension	651-070
12" Gun Extension	651-071
18" Gun Extension	651-072
24" Gun Extension	651-073
Pole Swivel	538029

### Gun and Pump Filters

Unthreaded filter design for quick and easy replacement.

For use with RX-Pro™, RX-80™, G-10, LX-30, LX-40, LX-50, LX-70, S-3 and S-7.

FILTERS	BULK PART NO.	2-PACK PART NO.
Coarse (Green)*	581-059	0089957
Medium (White)	581-060	0089958
Fine (Yellow)	581-062	0089959
Extra Fine (Red)	581-061	0089960

\*Manifold filter for Advantage 400.

DESCRIPTION	PART NO.
Medium Mesh 440–1140 Manifold Filter**	730-067
Small Inlet Screen (Rock Catcher)	700-805
Large Inlet Screen (Rock Catcher)	710-046

\*\*Works with RX-80 and RX-Pro Guns

### Rollers

DESCRIPTION	PART NO.
Spray Roller & Spray Guide, Swivel w/Pole	2404013
Inner Feed Roller	2404445

### Airless Hoses

DESCRIPTION	PART NO.
1/4" x 50' Airless Hose (3300 PSI)	316-505
3/16" x 3' Airless Whip Hose (3300 PSI)	291004
Hose Wrap (1100' Roll)	0521424

Part Renu™ Starter Kit



Tip Clean™



### Liquids and Cleaning Kits

DESCRIPTION	PART NO.
Piston Lube™ (4 oz. Bottle)	314-481
Piston Lube (8 oz. Bottle)	314-480
Liquid Shield Plus™ (4 oz. Bottle)	314-483
Liquid Shield Plus (1 Qt. Bottle)	314-482
Liquid Shield Plus™ (1 Gal. Bottle)	0521418
Tip Clean™	314-207
Pump Shield (12 oz. Bottle) (Minimum order of 6)	0297055
Part Renu Starter Kit	0521010
Part Renu (1 Gal. Refill)	0521423
Pump Runner	0286008
Wallet Safety Card	0154926

### Line Striping

DESCRIPTION	PART NO.
39" Handicap Stencil Kit	0290932
Small Stencil Kit	0290933
Large Stencil Kit	0290934

# DIAL DOWN THE PRESSURE

## TR<sup>1</sup> HEA TIP

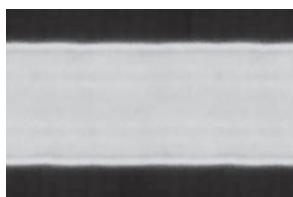


## HEA | HIGH EFFICIENCY AIRLESS™

### REVOLUTIONARY LOW PRESSURE TECHNOLOGY

- Optimized to spray all architectural paints and coatings at 1000 PSI at the same speed as high pressure
- Less pressure equals less stress, extending pump life and extending time between repacks
- Decreases overspray up to 55% giving you a cleaner work area
- Two times the life of a standard reversible tip
- Patented design

### HIGHLY EFFICIENT FAN PATTERN



Latex paint through a standard 517 tip at 1000 PSI



Latex paint through a HEA 517 tip at 1000 PSI

- Feathered edge provides consistent coverage
- More forgiving pattern that decreases runs and drips
- Less kickback when triggered providing more control and less overspray
- Fits all industry standard guards

#### MAXIMIZE THE PERFORMANCE OF YOUR HEA TIP



HEA Pressure Gauge Part No. 0580495

### THE RIGHT MIX FOR PRODUCTION 330-XXX

	INCHES (MM)	0.011	0.013	0.015	0.017	0.019	0.021
FAN WIDTH	4-6 (102-152)	211	213				
	6-8 (152-203)	311	313				
	8-10 (203-254)	411	413	415	417		421
	10-12 (254-305)			515	517	519	521
	12-14 (305-356)			615	617	619	621
	FLOW RATE (GPM)	0.09	0.12	0.18	0.24	0.31	0.47
FLOW RATE (LPM)	0.34	0.45	0.68	0.91	1.17	1.79	



**CONNECTOR APP**  
Available for download  
[theconnectorapp.com](http://theconnectorapp.com)

Call Technical Services at  
**1-800-526-5362**  
for complete warranty information.

All information contained in this brochure is based on the latest information available at the time of printing. Titan reserves the right to make changes at any time, without notice. Due to continuous innovation, specifications may progressively change. Contact one of our dependable sales reps or call our dedicated customer service team for more information.